



# Chickens and Eggs

ISSN: 1948-9064

---

Released September 22, 2011, by the National Agricultural Statistics Service (NASS), Agricultural Statistics Board, United States Department of Agriculture (USDA).

## August Egg Production Down Slightly

United States egg production totaled 7.74 billion during August 2011, down slightly from last year. Production included 6.67 billion table eggs, and 1.07 billion hatching eggs, of which 1.00 billion were broiler-type and 68 million were egg-type. The total number of layers during August 2011 averaged 336 million, down 1 percent from last year. August egg production per 100 layers was 2,301 eggs, up 1 percent from August 2010.

All layers in the United States on September 1, 2011 totaled 337 million, down 1 percent from last year. The 337 million layers consisted of 282 million layers producing table or market type eggs, 51.8 million layers producing broiler-type hatching eggs, and 3.01 million layers producing egg-type hatching eggs. Rate of lay per day on September 1, 2011, averaged 74.3 eggs per 100 layers, up slightly from September 1, 2010.

## Egg-Type Chicks Hatched Up 12 Percent

Egg-type chicks hatched during August 2011 totaled 41.6 million, up 12 percent from August 2010. Eggs in incubators totaled 39.1 million on September 1, 2011, up 5 percent from a year ago.

Domestic placements of egg-type pullet chicks for future hatchery supply flocks by leading breeders totaled 311 thousand during August 2011, up 23 percent from August 2010.

## Broiler-Type Chicks Hatched Down 5 Percent

Broiler-type chicks hatched during August 2011 totaled 761 million, down 5 percent from August 2010. Eggs in incubators totaled 601 million on September 1, 2011, down 6 percent from a year earlier.

Leading breeders placed 7.23 million broiler-type pullet chicks for future domestic hatchery supply flocks during August 2011, down 1 percent from August 2010.

**This page intentionally left blank.**

## Contents

Average Number of All Layers on Hand During the Month – United States: 2010-2011.....	4
Egg Production During the Month by Type – United States: 2010-2011 .....	4
Average Number of Layers During the Month – United States.....	5
All Egg Production During the Month – United States .....	5
Layers on Hand and Eggs Produced by Type and Forced Molt – United States: July-August 2010 and 2011 .....	6
Layers on Hand and Eggs Produced by Type and Forced Molt – United States: August-September 2010 and 2011 .....	7
Layers on Hand and Eggs Produced – States and United States: During July 2010 and 2011 .....	8
Layers on Hand and Eggs Produced – States and United States: During August 2010 and 2011 .....	9
Egg Production by Type – States and United States: July 2010 and 2011 .....	10
Egg Production by Type – States and United States: August 2010 and 2011.....	11
Forced Molt as Percent of All Layers by Month – United States: 2010-2011 .....	12
Forced Molt as Percent of All Layers – States and United States: September 1, 2010 and 2011.....	12
Hatchery Production – United States: 2010 and 2011 .....	13
Egg-Type Eggs in Incubators – Regions and United States: September 1, 2010 and 2011.....	14
Egg-Type Chicks Hatched by Month – United States: 2010-2011 .....	14
Intended Placements of Egg-Type Pullet Chicks for Hatchery Supply Flocks by Month – United States: 2010-2011 .....	15
Broiler-Type Eggs in Incubators – Regions and United States: September 1, 2010 and 2011.....	15
Broiler-Type Chicks Hatched – States and United States: August 2010 and 2011 .....	16
Broiler-Type Chicks Hatched by Month – United States: 2010-2011 .....	16
Intended Placements of Broiler-Type Pullet Chicks for Hatchery Supply Flocks by Month and Total: 2010-2011 .....	17
Statistical Methodology .....	18
Regional Listing.....	19
Terms and Definitions of Chickens and Eggs Estimates .....	19
Information Contacts .....	19

## Average Number of All Layers on Hand During the Month – United States: 2010-2011

[Blank data cells indicate estimation period has not yet begun]

Month	2010		2011	
	(1,000 layers)		(1,000 layers)	
December <sup>1</sup> .....		340,936		342,661
January .....		340,596		341,701
February .....		340,486		339,338
March .....		342,098		340,461
April .....		341,318		340,688
May .....		339,344		337,919
June .....		339,750		336,466
July .....		339,929		336,136
August .....		340,084		336,321
September .....		338,739		
October .....		336,804		
November .....		339,447		

<sup>1</sup> December preceding year.

## Egg Production During the Month by Type – United States: 2010-2011

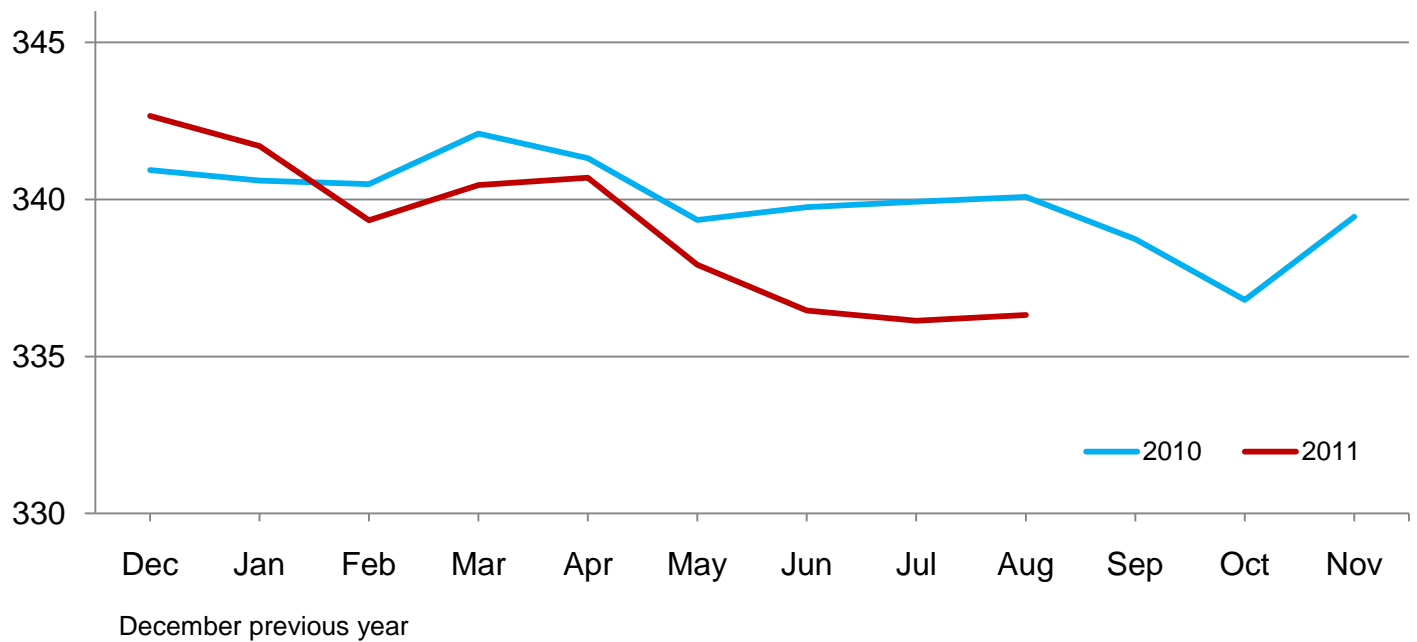
[Blank data cells indicate estimation period has not yet begun. Totals may not add due to rounding]

Month	Total eggs		Table eggs		Hatching eggs	
	2010	2011	2010	2011	2010	2011
	(million eggs)	(million eggs)	(million eggs)	(million eggs)	(million eggs)	(million eggs)
December <sup>1</sup> .....	7,853	7,920	6,779	6,850	1,074	1,070
January .....	7,724	7,821	6,637	6,739	1,087	1,083
February .....	6,935	7,006	5,950	6,029	985	976
March .....	7,839	7,836	6,740	6,754	1,098	1,083
April .....	7,578	7,617	6,503	6,555	1,075	1,062
May .....	7,716	7,777	6,607	6,671	1,109	1,107
June .....	7,484	7,505	6,415	6,438	1,069	1,068
July .....	7,719	7,740	6,610	6,656	1,109	1,085
August .....	7,765	7,739	6,669	6,672	1,096	1,068
September .....	7,514		6,464		1,050	
October .....	7,698		6,618		1,080	
November .....	7,573		6,538		1,036	
During year .....	91,398		78,530		12,868	

<sup>1</sup> December preceding year.

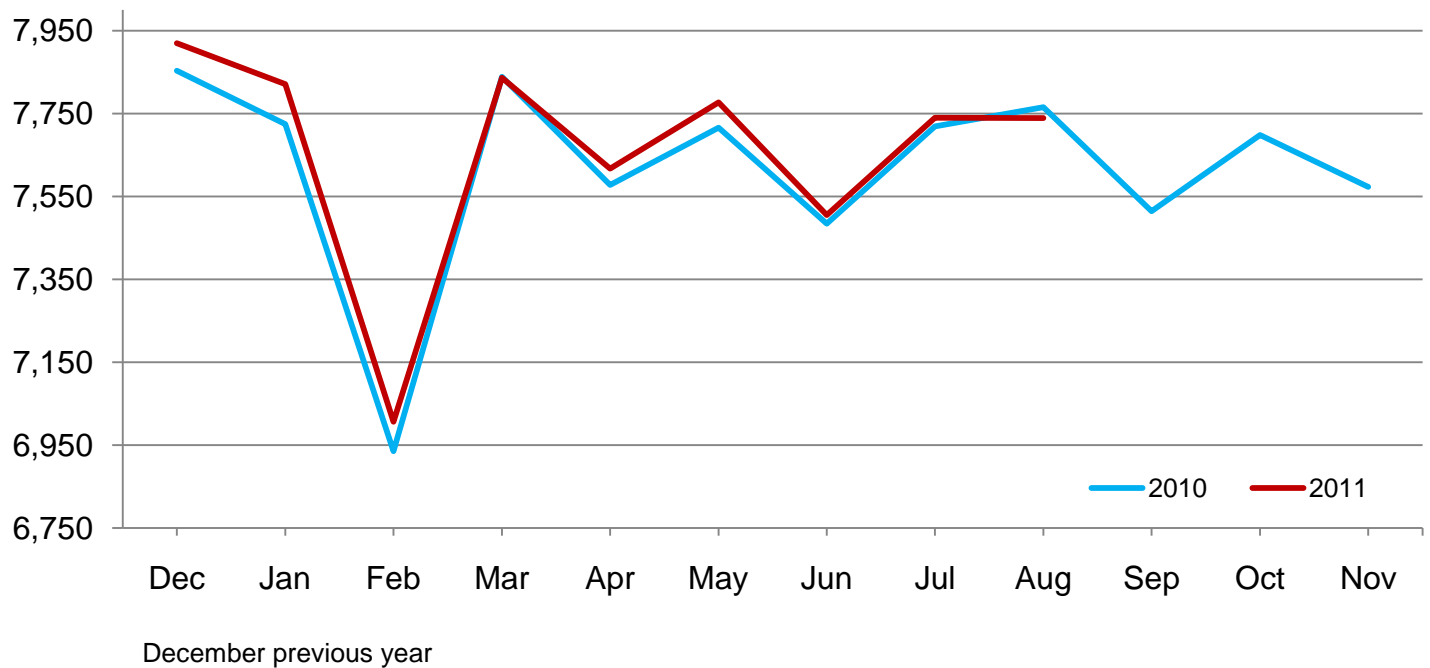
## Average Layers During the Month – United States

Million layers



## All Egg Production During the Month – United States

Million eggs



**Layers on Hand and Eggs Produced by Type and Forced Molt – United States:  
July-August 2010 and 2011**

[Totals may not add due to rounding]

Item	2010	2011	2011 as percent of 2010
Layers during July			
All layers ..... 1,000	339,929	336,136	99
Table egg type ..... 1,000	281,751	279,593	99
Hatching egg type ..... 1,000	58,178	56,543	97
Broiler-type hatching ..... 1,000	55,234	53,712	97
Egg-type hatching ..... 1,000	2,944	2,831	96
Eggs per 100 layers during July			
All layers ..... number	2,271	2,303	101
Table egg type ..... number	2,346	2,381	101
Hatching egg type ..... number	1,906	1,919	101
Broiler-type hatching ..... number	1,877	1,893	101
Egg-type hatching ..... number	2,446	2,402	98
Eggs produced during July			
All layers ..... million	7,719	7,740	100
Table egg type ..... million	6,610	6,656	101
Hatching egg type ..... million	1,109	1,085	98
Broiler-type hatching ..... million	1,037	1,017	98
Egg-type hatching ..... million	72	68	94
Layers on August 1			
All layers ..... 1,000	339,384	335,657	99
Table egg type ..... 1,000	281,509	279,769	99
Hatching egg type ..... 1,000	57,875	55,888	97
Broiler-type hatching ..... 1,000	54,915	53,060	97
Egg-type hatching ..... 1,000	2,960	2,828	96
Eggs per 100 layers on August 1			
All layers ..... number	73.2	74.1	101
Table egg type ..... number	75.6	76.5	101
Hatching egg type ..... number	61.6	62.0	101
Broiler-type hatching ..... number	60.7	61.3	101
Egg-type hatching ..... number	78.9	75.4	96
Forced molt layers on August 1			
Being molted ..... percent	3.4	3.6	106
Molt completed ..... percent	22.6	19.3	85
Layers sold for slaughter during July ..... 1,000	13,672	14,752	108
Layers rendered, died, destroyed, composted or disappeared for any reason during July ..... 1,000	8,055	8,840	110
Pullets on August 1 ..... 1,000	104,150	104,531	100
Pullets added during July <sup>1</sup> ..... 1,000	22,460	21,702	97

<sup>1</sup> Pullet chicks less than 3 days old added to pullet flocks.

## Layers on Hand and Eggs Produced by Type and Forced Molt – United States: August-September 2010 and 2011

[Totals may not add due to rounding]

Item	2010	2011	2011 as percent of 2010
<b>Layers during August</b>			
All layers ..... 1,000	340,084	336,321	99
Table egg type ..... 1,000	282,874	280,963	99
Hatching egg type ..... 1,000	57,210	55,358	97
Broiler-type hatching ..... 1,000	54,255	52,434	97
Egg-type hatching ..... 1,000	2,955	2,924	99
<b>Eggs per 100 layers during August</b>			
All layers ..... number	2,283	2,301	101
Table egg type ..... number	2,358	2,375	101
Hatching egg type ..... number	1,916	1,929	101
Broiler-type hatching ..... number	1,887	1,907	101
Egg-type hatching ..... number	2,437	2,326	95
<b>Eggs produced during August</b>			
All layers ..... million	7,765	7,739	100
Table egg type ..... million	6,669	6,672	100
Hatching egg type ..... million	1,096	1,068	97
Broiler-type hatching ..... million	1,024	1,000	98
Egg-type hatching ..... million	72	68	94
<b>Layers on September 1</b>			
All layers ..... 1,000	340,749	336,950	99
Table egg type ..... 1,000	284,221	282,142	99
Hatching egg type ..... 1,000	56,528	54,808	97
Broiler-type hatching ..... 1,000	53,585	51,794	97
Egg-type hatching ..... 1,000	2,943	3,014	102
<b>Eggs per 100 layers on September 1</b>			
All layers ..... number	74.1	74.3	100
Table egg type ..... number	76.5	76.7	100
Hatching egg type ..... number	62.0	62.1	100
Broiler-type hatching ..... number	61.1	61.5	101
Egg-type hatching ..... number	78.6	72.9	93
<b>Forced molt layers on September 1</b>			
Being molted ..... percent	2.6	3.1	119
Molt completed ..... percent	23.0	19.7	86
Layers sold for slaughter during August ..... 1,000	12,263	12,963	106
Layers rendered, died, destroyed, composted or disappeared for any reason during August ..... 1,000	7,290	7,484	103
Pullets on September 1 ..... 1,000	102,573	103,454	101
Pullets added during August <sup>1</sup> ..... 1,000	20,498	21,263	104

<sup>1</sup> Pullet chicks less than 3 days old added to pullet flocks.

## Layers on Hand and Eggs Produced – States and United States: During July 2010 and 2011

State	Table egg layers in flocks 30,000 and above		All layers		Eggs per 100 for all layers	
	2010	2011	2010	2011	2010	2011
	(1,000 layers)	(1,000 layers)	(1,000 layers)	(1,000 layers)	(eggs)	(eggs)
Alabama .....	1,322	1,278	9,677	9,243	1,932	1,947
Arkansas .....	3,230	3,438	12,230	12,114	2,020	2,088
California .....	19,106	19,171	19,415	19,471	2,333	2,393
Colorado .....	3,119	3,918	3,589	4,386	2,508	2,371
Connecticut .....	2,375	2,222	2,446	2,295	2,412	2,397
Florida .....	8,972	9,040	9,322	9,416	2,263	2,326
Georgia .....	7,932	7,941	16,654	16,251	2,144	2,154
Hawaii <sup>1</sup> .....	285	(NA)	330	(NA)	1,788	(NA)
Illinois .....	4,385	4,205	4,593	4,422	2,308	2,397
Indiana .....	22,880	22,354	23,560	23,019	2,334	2,355
Iowa .....	53,865	51,457	54,736	52,324	2,264	2,349
Maine .....	3,480	3,412	3,535	3,467	2,489	2,365
Maryland .....	2,131	1,745	2,271	1,867	2,334	2,250
Michigan .....	9,947	9,996	10,099	10,147	2,426	2,513
Minnesota .....	9,828	9,618	10,314	10,111	2,346	2,364
Mississippi .....	1,536	1,355	6,351	5,924	2,015	2,076
Missouri .....	5,699	5,835	7,087	7,156	2,342	2,320
Nebraska .....	9,292	9,089	9,342	9,139	2,526	2,484
New York .....	3,760	4,092	3,977	4,325	2,489	2,428
North Carolina .....	5,984	5,644	13,505	13,391	2,081	2,046
Ohio .....	27,794	27,065	28,279	27,526	2,263	2,300
Oregon .....	2,415	2,141	2,567	2,273	2,415	2,420
Pennsylvania .....	23,021	23,607	24,148	24,800	2,485	2,492
South Carolina .....	2,918	3,204	4,180	4,502	2,105	2,221
South Dakota .....	2,325	2,297	2,365	2,337	2,410	2,525
Texas .....	13,513	13,776	17,938	17,961	2,185	2,272
Utah .....	3,268	3,499	3,298	3,529	2,365	2,267
Virginia .....	1,287	1,149	3,139	2,951	1,911	2,033
Washington .....	6,266	6,549	6,381	6,664	2,366	2,446
Wisconsin .....	3,910	4,102	4,497	4,671	2,402	2,248
Other States <sup>2</sup> .....	11,414	11,884	20,104	20,454	2,189	2,161
United States .....	277,259	275,083	339,929	336,136	2,271	2,303

(NA) Not available.

<sup>1</sup> Included in Other States in 2011.

<sup>2</sup> Includes data for States not published in this table.



## Layers on Hand and Eggs Produced – States and United States: During August 2010 and 2011

State	Table egg layers in flocks 30,000 and above		All layers		Eggs per 100 for all layers	
	2010	2011	2010	2011	2010	2011
	(1,000 layers)	(1,000 layers)	(1,000 layers)	(1,000 layers)	(eggs)	(eggs)
Alabama .....	1,348	1,274	9,625	9,221	1,953	1,952
Arkansas .....	3,245	3,400	12,011	11,905	2,040	2,092
California .....	19,364	19,199	19,670	19,498	2,359	2,375
Colorado .....	3,171	4,055	3,605	4,511	2,524	2,283
Connecticut .....	2,325	2,191	2,394	2,263	2,464	2,475
Florida .....	9,227	9,085	9,594	9,473	2,283	2,354
Georgia .....	8,025	8,159	16,629	16,444	2,141	2,165
Hawaii <sup>1</sup> .....	304	(NA)	349	(NA)	1,805	(NA)
Illinois .....	4,409	4,097	4,613	4,309	2,385	2,390
Indiana .....	22,771	22,229	23,476	22,931	2,330	2,351
Iowa .....	54,439	51,932	55,281	52,871	2,268	2,328
Maine .....	3,477	3,506	3,532	3,561	2,492	2,303
Maryland .....	2,141	1,760	2,268	1,885	2,381	2,175
Michigan .....	9,978	9,839	10,129	9,991	2,488	2,452
Minnesota .....	9,778	9,584	10,264	10,081	2,338	2,331
Mississippi .....	1,483	1,359	6,237	5,783	2,020	2,092
Missouri .....	5,722	5,931	7,119	7,159	2,346	2,361
Nebraska .....	9,246	8,923	9,296	8,973	2,506	2,530
New York .....	3,730	4,130	3,951	4,365	2,480	2,474
North Carolina .....	5,773	5,458	13,081	12,917	2,110	2,083
Ohio .....	27,783	27,204	28,262	27,680	2,303	2,290
Oregon .....	2,301	2,235	2,452	2,380	2,488	2,437
Pennsylvania .....	23,147	24,100	24,290	25,260	2,445	2,435
South Carolina .....	3,111	3,183	4,390	4,420	2,096	2,308
South Dakota .....	2,370	2,341	2,410	2,381	2,365	2,604
Texas .....	13,478	14,036	17,767	18,101	2,246	2,282
Utah .....	3,407	3,527	3,437	3,557	2,269	2,390
Virginia .....	1,284	1,224	3,063	2,871	2,057	2,125
Washington .....	6,084	6,688	6,199	6,803	2,420	2,396
Wisconsin .....	4,108	3,986	4,688	4,559	2,346	2,369
Other States <sup>2</sup> .....	11,353	11,818	20,002	20,168	2,185	2,172
United States .....	278,382	276,453	340,084	336,321	2,283	2,301

(NA) Not available.

<sup>1</sup> Included in Other States in 2011.

<sup>2</sup> Includes data for States not published in this table.

## Egg Production by Type – States and United States: July 2010 and 2011

[Totals may not add due to rounding. Data by type of flock not shown for some States to avoid disclosing individual operations, data included in United States totals]

State	Total production		Table eggs		Hatching eggs	
	2010	2011	2010	2011	2010	2011
	(million eggs)	(million eggs)	(million eggs)	(million eggs)	(million eggs)	(million eggs)
Alabama .....	187	180	32	30	155	150
Arkansas .....	247	253	77	84	170	169
California .....	453	466	(D)	(D)	(D)	(D)
Colorado .....	90	104	(D)	(D)	(D)	(D)
Connecticut .....	59	55	(D)	(D)	(D)	(D)
Florida .....	211	219	206	213	5	6
Georgia .....	357	350	182	190	175	160
Hawaii <sup>1</sup> .....	5.9	(NA)	5.9	(NA)	-	(NA)
Illinois .....	106	106	103	103	3	3
Indiana .....	550	542	538	530	12	12
Iowa .....	1,239	1,229	1,226	1,216	13	13
Maine .....	88	82	(D)	(D)	(D)	(D)
Maryland .....	53	42	51	40	2	2
Michigan .....	245	255	(D)	(D)	(D)	(D)
Minnesota .....	242	239	233	231	9	8
Mississippi .....	128	123	38	35	90	88
Missouri .....	166	166	(D)	(D)	(D)	(D)
Nebraska .....	236	227	236	227	-	-
New York .....	99	105	(D)	(D)	(D)	(D)
North Carolina .....	281	274	146	133	135	141
Ohio .....	640	633	(D)	(D)	(D)	(D)
Oregon .....	62	55	60	53	2	2
Pennsylvania .....	600	618	580	597	20	21
South Carolina .....	88	100	66	78	22	22
South Dakota .....	57	59	57	59	-	-
Texas .....	392	408	(D)	(D)	(D)	(D)
Utah .....	78	80	78	80	-	-
Virginia .....	60	60	25	25	35	35
Washington .....	151	163	(D)	(D)	(D)	(D)
Wisconsin .....	108	105	(D)	(D)	(D)	(D)
Other States <sup>2</sup> .....	440	442	301	308	139	135
United States .....	7,719	7,740	6,610	6,656	1,109	1,085

- Represents zero.

(D) Withheld to avoid disclosing data for individual operations.

(NA) Not available.

<sup>1</sup> Included in Other States in 2011.

<sup>2</sup> Includes data for States not published in this table.

## Egg Production by Type – States and United States: August 2010 and 2011

[Totals may not add due to rounding. Data by type of flock not shown for some States to avoid disclosing individual operations, data included in United States totals]

State	Total production		Table eggs		Hatching eggs	
	2010	2011	2010	2011	2010	2011
	(million eggs)	(million eggs)	(million eggs)	(million eggs)	(million eggs)	(million eggs)
Alabama .....	188	180	33	29	155	151
Arkansas .....	245	249	78	85	167	164
California .....	464	463	(D)	(D)	(D)	(D)
Colorado .....	91	103	(D)	(D)	(D)	(D)
Connecticut .....	59	56	(D)	(D)	(D)	(D)
Florida .....	219	223	214	217	5	6
Georgia .....	356	356	184	196	172	160
Hawaii <sup>1</sup> .....	6.3	(NA)	6.3	(NA)	-	(NA)
Illinois .....	110	103	107	100	3	3
Indiana .....	547	539	534	527	13	12
Iowa .....	1,254	1,231	1,242	1,217	12	14
Maine .....	88	82	(D)	(D)	(D)	(D)
Maryland .....	54	41	52	40	2	1
Michigan .....	252	245	(D)	(D)	(D)	(D)
Minnesota .....	240	235	232	226	8	9
Mississippi .....	126	121	37	35	89	86
Missouri .....	167	169	(D)	(D)	(D)	(D)
Nebraska .....	233	227	233	227	-	-
New York .....	98	108	(D)	(D)	(D)	(D)
North Carolina .....	276	269	142	130	134	139
Ohio .....	651	634	(D)	(D)	(D)	(D)
Oregon .....	61	58	59	56	2	2
Pennsylvania .....	594	615	573	595	21	20
South Carolina .....	92	102	70	80	22	22
South Dakota .....	57	62	57	62	-	-
Texas .....	399	413	(D)	(D)	(D)	(D)
Utah .....	78	85	78	85	-	-
Virginia .....	63	61	29	29	34	32
Washington .....	150	163	(D)	(D)	(D)	(D)
Wisconsin .....	110	108	(D)	(D)	(D)	(D)
Other States <sup>2</sup> .....	437	438	300	306	137	133
United States .....	7,765	7,739	6,669	6,672	1,096	1,068

- Represents zero.

(D) Withheld to avoid disclosing data for individual operations.

(NA) Not available.

<sup>1</sup> Included in Other States in 2011.

<sup>2</sup> Includes data for States not published in this table.

## Forced Molt as Percent of All Layers by Month – United States: 2010-2011

[As of the first of the month. Blank data cells indicate estimation period has not yet begun]

Month	Being molted		Molt completed	
	2010 (percent)	2011 (percent)	2010 (percent)	2011 (percent)
January .....	2.7	2.8	20.8	21.3
February .....	3.6	3.6	20.3	20.3
March .....	3.2	3.1	21.2	20.2
April .....	2.8	2.6	21.3	20.0
May .....	4.2	3.0	21.5	20.0
June .....	3.3	3.8	22.7	19.4
July .....	3.3	3.5	22.5	19.5
August .....	3.4	3.6	22.6	19.3
September .....	2.6	3.1	23.0	19.7
October .....	4.4		21.7	
November .....	2.7		22.5	
December .....	1.8		22.5	

## Forced Molt as Percent of All Layers – States and United States: September 1, 2010 and 2011

[As of the first of the month]

State	Being molted		Molt completed	
	2010 (percent)	2011 (percent)	2010 (percent)	2011 (percent)
Alabama .....	0.5	1.0	6.0	8.0
Arkansas .....	-	2.0	11.0	6.5
California .....	2.5	4.5	30.5	28.0
Colorado .....	1.5	1.0	23.0	19.5
Connecticut .....	-	-	8.5	9.5
Florida .....	6.0	5.5	42.5	36.0
Georgia .....	2.0	1.0	16.5	16.5
Hawaii <sup>1</sup> .....	9.5	(NA)	43.5	(NA)
Illinois .....	7.0	2.0	17.0	28.5
Indiana .....	3.0	2.5	29.5	25.5
Iowa .....	2.5	4.5	38.0	33.0
Maine .....	-	-	-	-
Maryland .....	-	5.0	15.5	7.5
Michigan .....	3.5	6.0	20.5	12.5
Minnesota .....	4.0	6.0	25.5	25.0
Mississippi .....	2.0	1.0	9.0	11.5
Missouri .....	1.0	-	15.5	19.0
Nebraska .....	1.0	1.5	1.0	1.5
New York .....	2.0	-	10.5	7.0
North Carolina .....	2.5	0.5	14.0	14.0
Ohio .....	2.5	2.5	23.0	13.0
Oregon .....	-	4.0	27.5	32.0
Pennsylvania .....	2.0	2.0	12.0	7.5
South Carolina .....	1.0	2.0	19.5	19.0
South Dakota .....	2.5	2.5	34.5	20.0
Texas .....	4.0	3.5	21.0	20.5
Utah .....	8.0	3.0	36.0	44.5
Virginia .....	-	3.5	23.5	13.0
Washington .....	7.0	12.0	33.0	27.5
Wisconsin .....	5.5	5.5	29.0	27.5
Other States <sup>2</sup> .....	2.2	3.1	17.2	14.8
United States .....	2.6	3.1	23.0	19.7

- Represents zero.

(NA) Not available.

<sup>1</sup> Included in Other States in 2011.

<sup>2</sup> Includes data for States not published in this table.

## Hatchery Production – United States: 2010 and 2011

Item	2010	2011	2011 as percent of 2010
	(1,000)	(1,000)	(percent)
<b>Egg-type</b>			
Eggs in incubators on September 1 .....	37,109	39,141	105
Chicks hatched during August .....	37,014	41,564	112
Chicks hatched January through August .....	331,174	327,692	99
<b>Pullets hatched during August for intended placements:</b>			
Hatchery supply flocks .....	253	311	123
Cumulative potential placements 7-18 months earlier <sup>1</sup> .....	3,392	2,974	88
<b>Broiler-type</b>			
Eggs in incubators on September 1 .....	640,440	600,882	94
Chicks hatched during August .....	798,751	760,882	95
Chicks hatched January through August .....	6,218,954	6,169,660	99
<b>Pullets hatched during August for intended placements:</b>			
Hatchery supply flocks .....	7,313	7,233	99
Cumulative potential placements 7-15 months earlier <sup>2</sup> .....	62,300	64,820	104

<sup>1</sup> 2011 includes pullet chicks hatched February 2010 through January 2011.

<sup>2</sup> 2011 includes pullet chicks hatched May 2010 through January 2011.

## Egg-Type Eggs in Incubators – Regions and United States: September 1, 2010 and 2011

[See regional listing on page 19]

Region	2010	2011	2011 as percent of 2010
	(1,000 eggs)	(1,000 eggs)	(percent)
North Atlantic .....	4,127	6,000	145
East North Central .....	6,822	6,856	100
West North Central .....	8,890	8,741	98
South Atlantic .....	5,107	4,889	96
South Central .....	4,796	4,722	98
West .....	7,367	7,933	108
United States .....	37,109	39,141	105

## Egg-Type Chicks Hatched by Month – United States: 2010-2011

[Blank data cells indicate estimation period has not yet begun]

Month	By months			Cumulative		
	2010	2011	2011 as percent of 2010	2010	2011	2011 as percent of 2010
	(1,000 chicks)	(1,000 chicks)	(percent)	(1,000 chicks)	(1,000 chicks)	(percent)
January .....	38,819	41,366	107	38,819	41,366	107
February .....	39,218	37,336	95	78,037	78,702	101
March .....	44,914	43,974	98	122,951	122,676	100
April .....	47,558	43,429	91	170,509	166,105	97
May .....	43,231	43,305	100	213,740	209,410	98
June .....	42,331	39,313	93	256,071	248,723	97
July .....	38,089	37,405	98	294,160	286,128	97
August .....	37,014	41,564	112	331,174	327,692	99
September .....	40,130			371,304		
October .....	41,300			412,604		
November .....	38,849			451,453		
December .....	37,759			489,212		

## Intended Placements of Egg-Type Pullet Chicks for Hatchery Supply Flocks by Month – United States: 2010-2011

[Blank data cells indicate estimation period has not yet begun]

Month	Pullet chicks hatched		2011 as percent of 2010	Cumulative potential placements relative to current supply flocks 7-18 months earlier <sup>1</sup>	
	2010	2011		2011	2012
	(1,000 chicks)	(1,000 chicks)	(percent)	(1,000 chicks)	(1,000 chicks)
January .....	227	220	97	3,292	2,920
February .....	296	244	82	3,168	2,936
March .....	260	253	97	3,130	2,994
April .....	232	287	124	3,161	
May .....	230	196	85	3,054	
June .....	318	302	95	3,027	
July .....	218	234	107	2,981	
August .....	253	311	123	2,974	
September .....	251			2,922	
October .....	170			2,915	
November .....	263			2,970	
December .....	263			2,936	
Total .....	2,981				

<sup>1</sup> For August 2011, includes breeder pullet chicks hatched February 2010 through January 2011. The 7-18 months represent the first laying cycle. Molting and additional laying cycles will increase the cumulative potential placements.

## Broiler-Type Eggs in Incubators – Regions and United States: September 1, 2010 and 2011

[See regional listing on page 19]

Region	2010	2011	2011 as percent of 2010
	(1,000 eggs)	(1,000 eggs)	(percent)
North Atlantic .....	12,733	12,161	96
East North Central .....	11,801	12,252	104
West North Central .....	30,091	28,192	94
South Atlantic .....	235,923	227,159	96
South Central .....	328,201	297,430	91
West .....	21,691	23,688	109
United States .....	640,440	600,882	94

## Broiler-Type Chicks Hatched – States and United States: August 2010 and 2011

State	During August			January-August		
	2010	2011	2011 as percent of 2010	2010	2011	2011 as percent of 2010
	(1,000 chicks)	(1,000 chicks)	(percent)	(1,000 chicks)	(1,000 chicks)	(percent)
Alabama .....	113,162	103,491	91	877,368	859,424	98
Arkansas .....	89,253	77,751	87	701,574	670,666	96
Delaware .....	14,492	11,228	77	105,176	105,173	100
Florida .....	5,055	4,945	98	38,593	38,521	100
Georgia .....	118,890	118,289	99	917,418	958,316	104
Kentucky .....	28,331	28,639	101	226,617	223,833	99
Louisiana .....	12,555	12,601	100	100,158	98,435	98
Maryland .....	29,134	28,029	96	244,644	222,123	91
Mississippi .....	72,635	70,429	97	564,330	559,143	99
North Carolina .....	73,491	74,016	101	556,850	579,495	104
Oklahoma .....	24,388	24,142	99	200,137	199,204	100
Pennsylvania .....	13,564	14,284	105	106,644	112,184	105
South Carolina .....	21,628	19,140	88	163,991	153,682	94
Texas .....	59,521	54,962	92	456,844	442,441	97
Virginia .....	23,804	22,166	93	185,462	180,382	97
California, Missouri, Tennessee, and West Virginia .....	72,895	70,485	97	566,568	559,338	99
19 States <sup>1</sup> .....	772,798	734,597	95	6,012,374	5,962,360	99
Other States <sup>2</sup> .....	25,953	26,285	101	206,580	207,300	100
United States .....	798,751	760,882	95	6,218,954	6,169,660	99

<sup>1</sup> States in the weekly hatchery production estimating program.

<sup>2</sup> Not published separately to avoid disclosing data for individual operations.

## Broiler-Type Chicks Hatched by Month – United States: 2010-2011

[Blank data cells indicate estimation period has not yet begun]

Month	By months			Cumulative		
	2010	2011	2011 as percent of 2010	2010	2011	2011 as percent of 2010
	(1,000 chicks)	(1,000 chicks)	(percent)	(1,000 chicks)	(1,000 chicks)	(percent)
January .....	775,431	781,123	101	775,431	781,123	101
February .....	700,050	708,724	101	1,475,481	1,489,847	101
March .....	787,939	793,957	101	2,263,420	2,283,804	101
April .....	768,296	779,859	102	3,031,716	3,063,663	101
May .....	799,068	806,574	101	3,830,784	3,870,237	101
June .....	787,703	768,173	98	4,618,487	4,638,410	100
July .....	801,716	770,368	96	5,420,203	5,408,778	100
August .....	798,751	760,882	95	6,218,954	6,169,660	99
September .....	762,494			6,981,448		
October .....	768,094			7,749,542		
November .....	741,093			8,490,635		
December .....	786,440			9,277,075		



## Intended Placements of Broiler-Type Pullet Chicks for Hatchery Supply Flocks by Month and Total: 2010-2011

[Blank data cells indicate estimation period has not yet begun]

Month	Pullet chicks hatched		2011 as percent of 2010	Cumulative potential placements relative to current supply flocks 7-15 months earlier <sup>1</sup>	
	2010 (1,000 chicks)	2011 (1,000 chicks)		2011 (1,000 chicks)	2012 (1,000 chicks)
United States placements					
January .....	6,637	6,989	105	62,996	64,366
February .....	7,021	7,107	101	63,283	63,934
March .....	6,673	7,058	106	63,250	63,578
April .....	6,825	7,044	103	63,751	
May .....	8,351	7,721	92	63,990	
June .....	7,128	7,211	101	64,558	
July .....	6,675	6,444	97	64,656	
August .....	7,313	7,233	99	64,820	
September .....	7,128			63,576	
October .....	6,876			63,506	
November .....	7,589			63,875	
December .....	6,771			64,283	
Annual total .....	84,987				
Total placements <sup>2</sup>					
January .....	8,626	8,548	99		
February .....	9,151	8,782	96		
March .....	9,033	9,023	100		
April .....	8,210	8,944	109		
May .....	10,338	9,612	93		
June .....	9,055	9,225	102		
July .....	8,520	8,131	95		
August .....	9,009	8,700	97		
September .....	9,087				
October .....	8,553				
November .....	9,314				
December .....	8,596				
Annual total .....	107,492				

<sup>1</sup> For August 2011, includes breeder pullet chicks hatched May 2010 through January 2011.

<sup>2</sup> United States production of intended placements worldwide.

## Statistical Methodology

**Survey Procedures:** Primary data for the *Chickens and Eggs* report are from weekly and/or monthly questionnaires sent to producers. An attempt is made to collect information for layer and egg estimates from each known contractor and independent producer who has at least 30,000 table egg layers, flocks of hatchery supply layers, or pullet only operations with at least 500 pullets. Coverage for operations with less than 30,000 table egg layers are estimated each month based on data reported in December. Approximately 650 contractors, independent egg producers, and pullet only operations are contacted each month. All known hatcheries, approximately 300, are contacted for information on a weekly and/or monthly basis.

**Estimating Procedures:** Sound statistical methodology is employed to derive estimates from the reported data. All data are analyzed for unusual values. Data from each operation are compared to their own past operating profile and to trends from similar operations. Data for missing operations are estimated based on similar operations or historical data. NASS field offices prepare these estimates by using a combination of survey indications and historic trends. Individual State estimates are reviewed by the Agricultural Statistics Board for reasonableness. Individual hatchery data are summed to State, regional, and United States totals.

For chicken hatcheries, chicks hatched consist of all chicks of domesticated breeds including males and chicks destined for hatchery supply flocks and research purposes. Eggs set are eggs in incubators for the purpose of hatching. The relationship of egg-type chicks hatched to chicken inventory and poultry marketings are carefully monitored. The disposition of egg-type chicks hatched prior to placement into the laying flock can vary significantly, which can make comparisons to changes in layer inventory inconsistent over time. Broiler chicks placed are specifically placed on feed for meat production. Intended placement data reported by leading breeders include pullet chicks expected from eggs sold the preceding month. The breeders in this report account for a large percentage of replacement pullets for hatchery supply flocks. Production of replacement pullets by these breeders indicates the number of pullets available to hatchery supply layer flocks several months before the pullets will actually move into the laying flocks. "Hatchery Supply Flocks" include all generations of layers which could lay eggs to supply a hatchery. This includes the generations of parents, grandparents, great-grandparents, pedigree, etc. Also included are research flocks, vaccine flocks, and specific pathogen-free flocks. The broiler cumulative potential placements are a moving total of the intended placements 7-15 months earlier. The egg-type cumulative potential placements of 7-18 months earlier represent the first laying cycle. Molting and additional laying cycles will increase the cumulative potential placements of egg-type hatching flocks.

**Revision Policy:** The previous month's estimates are subject to revision if late reports or corrected data indicates a different level. Additionally, revisions after the monthly report will be made at the end of the marketing year and published in the annual reports of *Chickens and Eggs Summary* and *Hatchery Production Summary*. Estimates will also be reviewed for chickens and eggs after data from the 5-year Census of Agriculture are available. No revisions will be made after that date.

**Reliability:** Estimates are based on a census of all known contractors and independent producers who have at least 30,000 table egg layers, flocks of hatchery supply layers, pullet only operations with at least 500 pullets, or operating hatcheries and therefore, have no sampling error. However, estimates are subject to errors such as omission, duplication, and mistakes in reporting, recording, and processing the data. While these errors cannot be measured directly, they are minimized through strict quality controls in the data collection process and a careful review of all reported data for consistency and reasonableness.

To assist in evaluating the reliability of the estimates in this report, the "Root Mean Square Error" is shown for selected items in the following table. The "Root Mean Square Error" is a statistical measure based on past performance and is computed using the differences between first and final estimates. The "Root Mean Square Error" for all layers over the past 24 months is 0.3 percent. This means that chances are 2 out of 3 that the final estimate will not be above or below the current estimate of 336 million layers by more than 0.3 percent. Chances are 9 out of 10 that the difference will not exceed 0.6 percent.

## Reliability of Layer and Egg Estimates

[Based on data for the past twenty-four months]

Item	Root mean square error	90 percent confidence level	Difference between first and latest estimate				
			Average	Smallest	Largest	Months	
						Below latest	Above latest
	(percent)	(percent)	(1,000)	(1,000)	(1,000)	(number)	(number)
All layers .....	0.3	0.6	958	26	2,021	22	2
Eggs .....	0.3	0.5	20	1	45	22	2

## Regional Listing

- North Atlantic:** Connecticut, Maine, Massachusetts, New Hampshire, New Jersey, New York, Pennsylvania, Rhode Island, Vermont.
- East North Central:** Illinois, Indiana, Michigan, Ohio, Wisconsin.
- West North Central:** Iowa, Kansas, Minnesota, Missouri, Nebraska, North Dakota, South Dakota.
- South Atlantic:** Delaware, Florida, Georgia, Maryland, North Carolina, South Carolina, Virginia, West Virginia.
- South Central:** Alabama, Arkansas, Kentucky, Louisiana, Mississippi, Oklahoma, Tennessee, Texas.
- West:** Alaska, Arizona, California, Colorado, Hawaii, Idaho, Montana, New Mexico, Nevada, Oregon, Utah, Washington, Wyoming.

## Terms and Definitions of Chickens and Eggs Estimates

**All Layers** includes both table egg and hatching egg flocks regardless of size.

**Intended Placements** are reported by leading breeders. Coverage may not be 100 percent. Includes expected pullet chicks from eggs sold during the preceding month at the rate of 125 pullet chicks per case of 30 dozen eggs.

## Information Contacts

Listed below are the commodity specialists in the Livestock Branch of the National Agricultural Statistics Service to contact for additional information. E-mail inquiries may be sent to [nass@nass.usda.gov](mailto:nass@nass.usda.gov)

- Dan Kerestes, Chief, Livestock Branch ..... (202) 720-3570
- Bruce Boess, Head, Poultry and Specialty Commodities Section ..... (202) 720-4447
- Cody Brokmeyer – Poultry Slaughter, Turkey Hatchery, Turkeys Raised ..... (202) 690-3237
- David Colwell – Cold Storage ..... (202) 720-8784
- Kim Linonis – Layers, Eggs ..... (202) 690-8632
- Miste Salmon – Broiler Hatchery, Catfish Processing, Catfish Production, Census of Aquaculture,  
     Chicken Hatchery, Egg Products, Honey, Mink, Trout Production ..... (202) 720-0585

## Access to NASS Reports

For your convenience, you may access NASS reports and products the following ways:

- All reports are available electronically, at no cost, on the NASS web site: <http://www.nass.usda.gov>
- Both national and state specific reports are available via a free e-mail subscription. To set-up this free subscription, visit <http://www.nass.usda.gov> and in the “Receive NASS Updates” box under “Receive reports by Email,” click on “National” or “State” to select the reports you would like to receive.
- Printed reports may be purchased from the National Technical Information Service (NTIS) by calling toll-free (800) 999-6779, or (703) 605-6220 if calling from outside the United States or Canada. Accepted methods of payment are Visa, MasterCard, check, or money order.

For more information on NASS surveys and reports, call the NASS Agricultural Statistics Hotline at (800) 727-9540, 7:30 a.m. to 4:00 p.m. ET, or e-mail: [nass@nass.usda.gov](mailto:nass@nass.usda.gov).

The United States Department of Agriculture (USDA) prohibits discrimination in all its programs and activities on the basis of race, color, national origin, age, disability, and where applicable, sex, marital status, familial status, parental status, religion, sexual orientation, political beliefs, genetic information, reprisal, or because all or a part of an individual's income is derived from any public assistance program. (Not all prohibited bases apply to all programs.) Persons with disabilities who require alternative means for communication of program information (Braille, large print, audiotape, etc.) should contact USDA's TARGET Center at (202) 720-2600 (voice and TDD).

To file a complaint of discrimination, write to USDA, Assistant Secretary for Civil Rights, Office of the Assistant Secretary for Civil Rights, 1400 Independence Avenue, S.W., Stop 9410, Washington, DC 20250-9410, or call toll-free at (866) 632-9992 (English) or (800) 877-8339 (TDD) or (866) 377-8642 (English Federal-relay) or (800) 845-6136 (Spanish Federal-relay). USDA is an equal opportunity provider and employer.