



Chickens and Eggs

ISSN: 1948-9064

Released October 21, 2011, by the National Agricultural Statistics Service (NASS), Agricultural Statistics Board, United States Department of Agriculture (USDA).

September Egg Production Down Slightly

United States egg production totaled 7.51 billion during September 2011, down slightly from last year. Production included 6.49 billion table eggs, and 1.02 billion hatching eggs, of which 952 million were broiler-type and 68 million were egg-type. The total number of layers during September 2011 averaged 336 million, down 1 percent from last year. September egg production per 100 layers was 2,236 eggs, up 1 percent from September 2010.

All layers in the United States on October 1, 2011 totaled 335 million, down slightly from last year. The 335 million layers consisted of 281 million layers producing table or market type eggs, 51.2 million layers producing broiler-type hatching eggs, and 2.95 million layers producing egg-type hatching eggs. Rate of lay per day on October 1, 2011, averaged 74.6 eggs per 100 layers, up 1 percent from October 1, 2010.

Egg-Type Chicks Hatched Up Slightly

Egg-type chicks hatched during September 2011 totaled 40.3 million, up slightly from September 2010. Eggs in incubators totaled 36.5 million on October 1, 2011, down 8 percent from a year ago.

Domestic placements of egg-type pullet chicks for future hatchery supply flocks by leading breeders totaled 274 thousand during September 2011, up 9 percent from September 2010.

Broiler-Type Chicks Hatched Down 5 Percent

Broiler-type chicks hatched during September 2011 totaled 721 million, down 5 percent from September 2010. Eggs in incubators totaled 572 million on October 1, 2011, down 8 percent from a year earlier.

Leading breeders placed 6.66 million broiler-type pullet chicks for future domestic hatchery supply flocks during September 2011, down 7 percent from September 2010.

This page intentionally left blank.

Contents

Average Number of All Layers on Hand During the Month – United States: 2010-2011.....	4
Egg Production During the Month by Type – United States: 2010-2011	4
Average Number of Layers During the Month – United States.....	5
All Egg Production During the Month – United States	5
Layers on Hand and Eggs Produced by Type and Forced Molt – United States: August-September 2010 and 2011	6
Layers on Hand and Eggs Produced by Type and Forced Molt – United States: September-October 2010 and 2011.....	7
Layers on Hand and Eggs Produced – States and United States: During August 2010 and 2011	8
Layers on Hand and Eggs Produced – States and United States: During September 2010 and 2011	9
Egg Production by Type – States and United States: August 2010 and 2011.....	10
Egg Production by Type – States and United States: September 2010 and 2011	11
Forced Molt as Percent of All Layers by Month – United States: 2010-2011	12
Forced Molt as Percent of All Layers – States and United States: October 1, 2010 and 2011	12
Hatchery Production – United States: 2010 and 2011	13
Egg-Type Eggs in Incubators – Regions and United States: October 1, 2010 and 2011	14
Egg-Type Chicks Hatched by Month – United States: 2010-2011	14
Intended Placements of Egg-Type Pullet Chicks for Hatchery Supply Flocks by Month – United States: 2010-2011	15
Broiler-Type Eggs in Incubators – Regions and United States: October 1, 2010 and 2011	15
Broiler-Type Chicks Hatched – States and United States: September 2010 and 2011	16
Broiler-Type Chicks Hatched by Month – United States: 2010-2011	16
Intended Placements of Broiler-Type Pullet Chicks for Hatchery Supply Flocks by Month and Total: 2010-2011	17
Statistical Methodology	18
Regional Listing	19
Terms and Definitions of Chickens and Eggs Estimates	19
Information Contacts	19

Average Number of All Layers on Hand During the Month – United States: 2010-2011

[Blank data cells indicate estimation period has not yet begun]

Month	2010		2011	
	(1,000 layers)		(1,000 layers)	
December ¹		340,936		342,661
January		340,596		341,701
February		340,486		339,338
March		342,098		340,461
April		341,318		340,688
May		339,344		337,919
June		339,750		336,466
July		339,929		336,136
August		340,084		336,022
September		338,739		335,838
October		336,804		
November		339,447		

¹ December preceding year.

Egg Production During the Month by Type – United States: 2010-2011

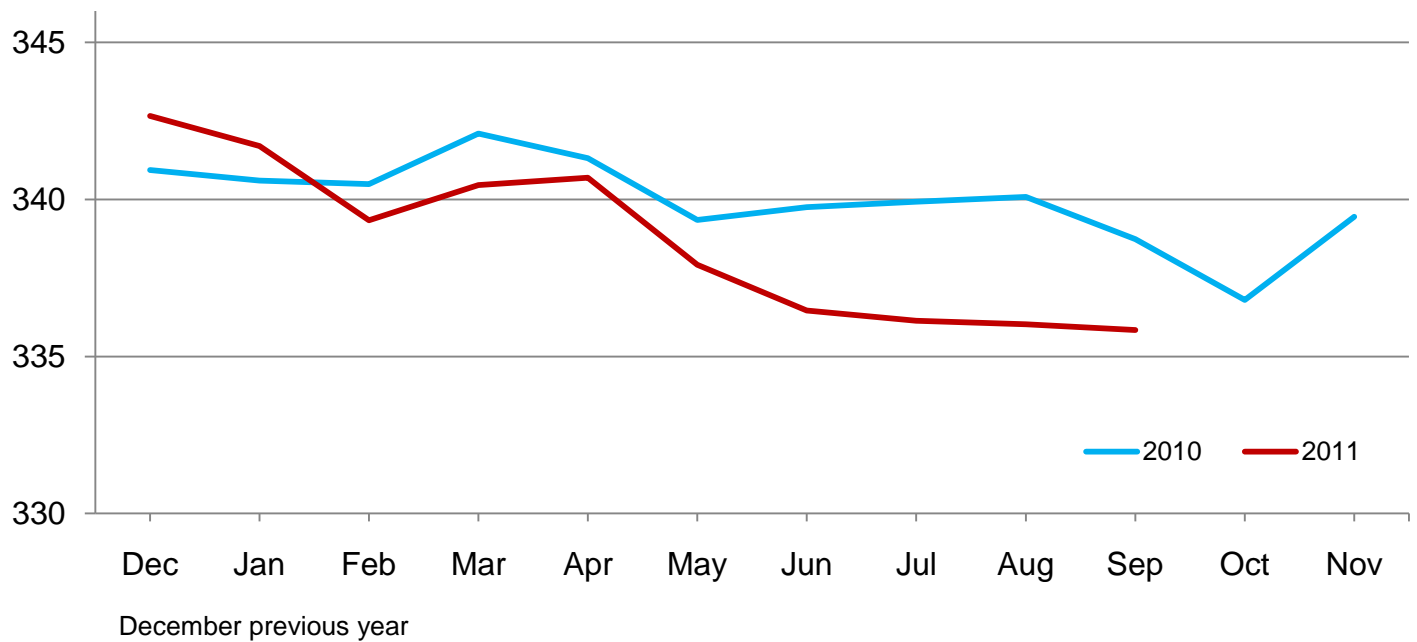
[Blank data cells indicate estimation period has not yet begun. Totals may not add due to rounding]

Month	Total eggs		Table eggs		Hatching eggs	
	2010	2011	2010	2011	2010	2011
	(million eggs)	(million eggs)	(million eggs)	(million eggs)	(million eggs)	(million eggs)
December ¹	7,853	7,920	6,779	6,850	1,074	1,070
January	7,724	7,821	6,637	6,739	1,087	1,083
February	6,935	7,006	5,950	6,029	985	976
March	7,839	7,836	6,740	6,754	1,098	1,083
April	7,578	7,617	6,503	6,555	1,075	1,062
May	7,716	7,777	6,607	6,671	1,109	1,107
June	7,484	7,505	6,415	6,438	1,069	1,068
July	7,719	7,740	6,610	6,656	1,109	1,085
August	7,765	7,734	6,669	6,671	1,096	1,064
September	7,514	7,509	6,464	6,490	1,050	1,020
October	7,698		6,618		1,080	
November	7,573		6,538		1,036	
During year	91,398		78,530		12,868	

¹ December preceding year.

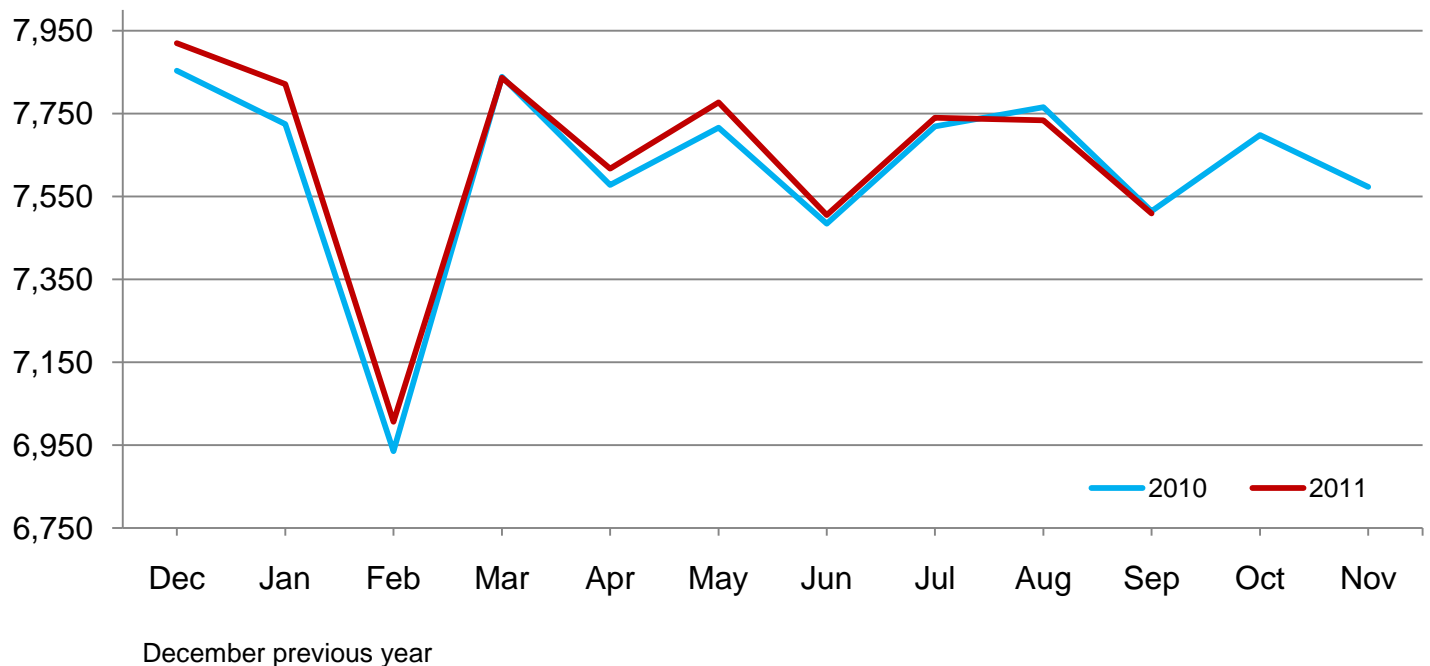
Average Layers During the Month – United States

Million layers



All Egg Production During the Month – United States

Million eggs



**Layers on Hand and Eggs Produced by Type and Forced Molt – United States:
August-September 2010 and 2011**

[Totals may not add due to rounding]

Item	2010	2011	2011 as percent of 2010
Layers during August			
All layers 1,000	340,084	336,022	99
Table egg type 1,000	282,874	280,888	99
Hatching egg type 1,000	57,210	55,134	96
Broiler-type hatching 1,000	54,255	52,200	96
Egg-type hatching 1,000	2,955	2,934	99
Eggs per 100 layers during August			
All layers number	2,283	2,302	101
Table egg type number	2,358	2,375	101
Hatching egg type number	1,916	1,930	101
Broiler-type hatching number	1,887	1,908	101
Egg-type hatching number	2,437	2,318	95
Eggs produced during August			
All layers million	7,765	7,734	100
Table egg type million	6,669	6,671	100
Hatching egg type million	1,096	1,064	97
Broiler-type hatching million	1,024	996	97
Egg-type hatching million	72	68	94
Layers on September 1			
All layers 1,000	340,749	336,353	99
Table egg type 1,000	284,221	281,993	99
Hatching egg type 1,000	56,528	54,360	96
Broiler-type hatching 1,000	53,585	51,326	96
Egg-type hatching 1,000	2,943	3,034	103
Eggs per 100 layers on September 1			
All layers number	74.1	74.2	100
Table egg type number	76.5	76.6	100
Hatching egg type number	62.0	62.2	100
Broiler-type hatching number	61.1	61.5	101
Egg-type hatching number	78.6	73.1	93
Forced molt layers on September 1			
Being molted percent	2.6	3.3	127
Molt completed percent	23.0	20.0	87
Layers sold for slaughter during August 1,000	12,263	13,233	108
Layers rendered, died, destroyed, composted or disappeared for any reason during August 1,000	7,290	7,472	102
Pullets on September 1 1,000	102,573	103,319	101
Pullets added during August ¹ 1,000	20,498	21,329	104

¹ Pullet chicks less than 3 days old added to pullet flocks.

**Layers on Hand and Eggs Produced by Type and Forced Molt – United States:
September-October 2010 and 2011**

[Totals may not add due to rounding]

Item	2010	2011	2011 as percent of 2010
Layers during September			
All layers 1,000	338,739	335,838	99
Table egg type 1,000	282,199	281,587	100
Hatching egg type 1,000	56,540	54,251	96
Broiler-type hatching 1,000	53,602	51,258	96
Egg-type hatching 1,000	2,938	2,993	102
Eggs per 100 layers during September			
All layers number	2,218	2,236	101
Table egg type number	2,291	2,305	101
Hatching egg type number	1,857	1,880	101
Broiler-type hatching number	1,828	1,857	102
Egg-type hatching number	2,383	2,272	95
Eggs produced during September			
All layers million	7,514	7,509	100
Table egg type million	6,464	6,490	100
Hatching egg type million	1,050	1,020	97
Broiler-type hatching million	980	952	97
Egg-type hatching million	70	68	97
Layers on October 1			
All layers 1,000	336,691	335,289	100
Table egg type 1,000	280,158	281,164	100
Hatching egg type 1,000	56,533	54,125	96
Broiler-type hatching 1,000	53,608	51,180	95
Egg-type hatching 1,000	2,925	2,945	101
Eggs per 100 layers on October 1			
All layers number	73.7	74.6	101
Table egg type number	76.1	76.9	101
Hatching egg type number	61.5	62.7	102
Broiler-type hatching number	60.5	61.9	102
Egg-type hatching number	79.7	77.0	97
Forced molt layers on October 1			
Being molted percent	4.4	3.8	86
Molt completed percent	21.7	19.9	92
Layers sold for slaughter during September 1,000	13,993	15,411	110
Layers rendered, died, destroyed, composted or disappeared for any reason during September 1,000	9,982	6,487	65
Pullets on October 1 1,000	104,763	104,908	100
Pullets added during September ¹ 1,000	22,951	22,972	100

¹ Pullet chicks less than 3 days old added to pullet flocks.

Layers on Hand and Eggs Produced – States and United States: During August 2010 and 2011

State	Table egg layers in flocks 30,000 and above		All layers		Eggs per 100 for all layers	
	2010	2011	2010	2011	2010	2011
	(1,000 layers)	(1,000 layers)	(1,000 layers)	(1,000 layers)	(eggs)	(eggs)
Alabama	1,348	1,274	9,625	9,224	1,953	1,951
Arkansas	3,245	3,400	12,011	11,905	2,040	2,092
California	19,364	19,199	19,670	19,498	2,359	2,375
Colorado	3,171	4,055	3,605	4,511	2,524	2,283
Connecticut	2,325	2,191	2,394	2,263	2,464	2,475
Florida	9,227	9,085	9,594	9,473	2,283	2,354
Georgia	8,025	8,093	16,629	16,357	2,141	2,170
Hawaii ¹	304	(NA)	349	(NA)	1,805	(NA)
Illinois	4,409	4,098	4,613	4,310	2,385	2,390
Indiana	22,771	22,229	23,476	22,931	2,330	2,351
Iowa	54,439	51,932	55,281	52,871	2,268	2,328
Maine	3,477	3,506	3,532	3,561	2,492	2,303
Maryland	2,141	1,760	2,268	1,885	2,381	2,175
Michigan	9,978	9,839	10,129	9,991	2,488	2,452
Minnesota	9,778	9,584	10,264	10,081	2,338	2,331
Mississippi	1,483	1,359	6,237	5,783	2,020	2,092
Missouri	5,722	5,931	7,119	7,159	2,346	2,361
Nebraska	9,246	8,923	9,296	8,973	2,506	2,530
New York	3,730	4,130	3,951	4,365	2,480	2,474
North Carolina	5,773	5,458	13,081	12,701	2,110	2,086
Ohio	27,783	27,204	28,262	27,680	2,303	2,290
Oregon	2,301	2,235	2,452	2,380	2,488	2,437
Pennsylvania	23,147	24,090	24,290	25,250	2,445	2,436
South Carolina	3,111	3,183	4,390	4,420	2,096	2,308
South Dakota	2,370	2,341	2,410	2,381	2,365	2,604
Texas	13,478	14,036	17,767	18,101	2,246	2,282
Utah	3,407	3,527	3,437	3,557	2,269	2,390
Virginia	1,284	1,224	3,063	2,881	2,057	2,117
Washington	6,084	6,688	6,199	6,803	2,420	2,396
Wisconsin	4,108	3,986	4,688	4,559	2,346	2,369
Other States ²	11,353	11,818	20,002	20,168	2,185	2,172
United States	278,382	276,378	340,084	336,022	2,283	2,302

(NA) Not available.

¹ Included in Other States in 2011.

² Includes data for States not published in this table.

Layers on Hand and Eggs Produced – States and United States: During September 2010 and 2011

State	Table egg layers in flocks 30,000 and above		All layers		Eggs per 100 for all layers	
	2010	2011	2010	2011	2010	2011
	(1,000 layers)	(1,000 layers)	(1,000 layers)	(1,000 layers)	(eggs)	(eggs)
Alabama	1,406	1,341	9,605	9,231	1,895	1,885
Arkansas	3,228	3,385	11,914	11,561	1,981	2,015
California	19,526	19,452	19,832	19,747	2,274	2,264
Colorado	3,179	4,170	3,560	4,625	2,528	2,227
Connecticut	2,292	2,162	2,360	2,232	2,415	2,375
Florida	9,153	9,168	9,524	9,553	2,247	2,313
Georgia	8,179	7,787	16,818	16,284	2,117	2,162
Hawaii ¹	303	(NA)	348	(NA)	1,695	(NA)
Illinois	4,417	4,171	4,622	4,379	2,315	2,352
Indiana	22,604	22,001	23,332	22,720	2,267	2,311
Iowa	53,748	51,988	54,580	52,917	2,213	2,220
Maine	3,526	3,512	3,581	3,567	2,402	2,215
Maryland	2,119	1,737	2,257	1,874	2,215	2,241
Michigan	9,924	10,023	10,074	10,175	2,412	2,319
Minnesota	9,894	9,623	10,399	10,125	2,279	2,262
Mississippi	1,385	1,453	6,061	5,790	1,963	2,038
Missouri	5,820	5,907	7,143	7,097	2,226	2,395
Nebraska	9,377	8,931	9,427	8,981	2,440	2,427
New York	3,725	4,128	3,949	4,367	2,380	2,427
North Carolina	5,840	5,461	12,935	12,351	2,002	2,113
Ohio	27,656	27,486	28,131	27,974	2,225	2,231
Oregon	2,218	2,199	2,365	2,356	2,452	2,292
Pennsylvania	22,652	24,123	23,779	25,280	2,372	2,350
South Carolina	3,100	2,996	4,404	4,196	2,112	2,264
South Dakota	2,365	2,382	2,405	2,422	2,245	2,519
Texas	13,593	14,195	17,798	18,084	2,202	2,212
Utah	3,475	3,514	3,505	3,544	2,254	2,398
Virginia	1,241	1,291	2,982	2,974	2,146	2,085
Washington	6,174	6,779	6,289	6,894	2,274	2,306
Wisconsin	4,247	3,963	4,832	4,543	2,194	2,355
Other States ²	11,341	11,749	19,928	19,995	2,118	2,116
United States	277,707	277,077	338,739	335,838	2,218	2,236

(NA) Not available.

¹ Included in Other States in 2011.

² Includes data for States not published in this table.

Egg Production by Type – States and United States: August 2010 and 2011

[Totals may not add due to rounding. Data by type of flock not shown for some States to avoid disclosing individual operations, data included in United States totals]

State	Total production		Table eggs		Hatching eggs	
	2010	2011	2010	2011	2010	2011
	(million eggs)	(million eggs)	(million eggs)	(million eggs)	(million eggs)	(million eggs)
Alabama	188	180	33	29	155	151
Arkansas	245	249	78	85	167	164
California	464	463	(D)	(D)	(D)	(D)
Colorado	91	103	(D)	(D)	(D)	(D)
Connecticut	59	56	(D)	(D)	(D)	(D)
Florida	219	223	214	217	5	6
Georgia	356	355	184	195	172	160
Hawaii ¹	6.3	(NA)	6.3	(NA)	-	(NA)
Illinois	110	103	107	100	3	3
Indiana	547	539	534	527	13	12
Iowa	1,254	1,231	1,242	1,217	12	14
Maine	88	82	(D)	(D)	(D)	(D)
Maryland	54	41	52	40	2	1
Michigan	252	245	(D)	(D)	(D)	(D)
Minnesota	240	235	232	226	8	9
Mississippi	126	121	37	35	89	86
Missouri	167	169	(D)	(D)	(D)	(D)
Nebraska	233	227	233	227	-	-
New York	98	108	(D)	(D)	(D)	(D)
North Carolina	276	265	142	130	134	135
Ohio	651	634	(D)	(D)	(D)	(D)
Oregon	61	58	59	56	2	2
Pennsylvania	594	615	573	595	21	20
South Carolina	92	102	70	80	22	22
South Dakota	57	62	57	62	-	-
Texas	399	413	(D)	(D)	(D)	(D)
Utah	78	85	78	85	-	-
Virginia	63	61	29	29	34	32
Washington	150	163	(D)	(D)	(D)	(D)
Wisconsin	110	108	(D)	(D)	(D)	(D)
Other States ²	437	438	300	306	137	133
United States	7,765	7,734	6,669	6,671	1,096	1,064

- Represents zero.

(D) Withheld to avoid disclosing data for individual operations.

(NA) Not available.

¹ Included in Other States in 2011.

² Includes data for States not published in this table.

Egg Production by Type – States and United States: September 2010 and 2011

[Totals may not add due to rounding. Data by type of flock not shown for some States to avoid disclosing individual operations, data included in United States totals]

State	Total production		Table eggs		Hatching eggs	
	2010	2011	2010	2011	2010	2011
	(million eggs)	(million eggs)	(million eggs)	(million eggs)	(million eggs)	(million eggs)
Alabama	182	174	34	31	148	143
Arkansas	236	233	78	80	158	153
California	451	447	(D)	(D)	(D)	(D)
Colorado	90	103	(D)	(D)	(D)	(D)
Connecticut	57	53	(D)	(D)	(D)	(D)
Florida	214	221	208	215	6	6
Georgia	356	352	188	191	168	161
Hawaii ¹	5.9	(NA)	5.9	(NA)	-	(NA)
Illinois	107	103	104	100	3	3
Indiana	529	525	516	512	13	13
Iowa	1,208	1,175	1,196	1,160	12	15
Maine	86	79	(D)	(D)	(D)	(D)
Maryland	50	42	48	40	2	2
Michigan	243	236	(D)	(D)	(D)	(D)
Minnesota	237	229	228	221	9	8
Mississippi	119	118	33	36	86	82
Missouri	159	170	(D)	(D)	(D)	(D)
Nebraska	230	218	230	218	-	-
New York	94	106	(D)	(D)	(D)	(D)
North Carolina	259	261	136	137	123	124
Ohio	626	624	(D)	(D)	(D)	(D)
Oregon	58	54	56	52	2	2
Pennsylvania	564	594	545	576	19	18
South Carolina	93	95	71	75	22	20
South Dakota	54	61	54	61	-	-
Texas	392	400	(D)	(D)	(D)	(D)
Utah	79	85	79	85	-	-
Virginia	64	62	32	30	32	32
Washington	143	159	(D)	(D)	(D)	(D)
Wisconsin	106	107	(D)	(D)	(D)	(D)
Other States ²	422	423	290	296	132	128
United States	7,514	7,509	6,464	6,490	1,050	1,020

- Represents zero.

(D) Withheld to avoid disclosing data for individual operations.

(NA) Not available.

¹ Included in Other States in 2011.

² Includes data for States not published in this table.

Forced Molt as Percent of All Layers by Month – United States: 2010-2011

[As of the first of the month. Blank data cells indicate estimation period has not yet begun]

Month	Being molted		Molt completed	
	2010 (percent)	2011 (percent)	2010 (percent)	2011 (percent)
January	2.7	2.8	20.8	21.3
February	3.6	3.6	20.3	20.3
March	3.2	3.1	21.2	20.2
April	2.8	2.6	21.3	20.0
May	4.2	3.0	21.5	20.0
June	3.3	3.8	22.7	19.4
July	3.3	3.5	22.5	19.5
August	3.4	3.6	22.6	19.3
September	2.6	3.3	23.0	20.0
October	4.4	3.8	21.7	19.9
November	2.7		22.5	
December	1.8		22.5	

Forced Molt as Percent of All Layers – States and United States: October 1, 2010 and 2011

[As of the first of the month]

State	Being molted		Molt completed	
	2010 (percent)	2011 (percent)	2010 (percent)	2011 (percent)
Alabama	0.5	0.5	6.0	7.5
Arkansas	3.0	1.5	11.0	4.5
California	5.5	6.5	30.0	27.5
Colorado	5.0	2.0	28.5	19.5
Connecticut	-	-	8.5	9.0
Florida	9.5	5.5	37.0	36.0
Georgia	5.5	1.5	15.5	12.0
Hawaii ¹	9.0	(NA)	48.5	(NA)
Illinois	13.0	4.0	19.0	27.0
Indiana	5.5	5.0	27.5	25.0
Iowa	6.5	6.5	32.0	34.0
Maine	-	-	-	-
Maryland	11.5	5.0	14.0	7.0
Michigan	2.5	4.0	21.5	12.5
Minnesota	2.0	4.5	24.5	26.0
Mississippi	3.0	2.0	9.5	10.0
Missouri	4.5	3.5	21.5	18.5
Nebraska	-	1.0	2.0	0.5
New York	0.5	1.5	11.0	5.0
North Carolina	4.0	2.0	16.5	15.0
Ohio	3.0	3.0	23.5	12.0
Oregon	8.5	8.5	24.0	35.0
Pennsylvania	1.5	4.0	11.5	11.0
South Carolina	4.5	-	16.5	16.0
South Dakota	10.0	2.5	30.5	20.0
Texas	4.0	2.0	19.0	23.5
Utah	12.5	4.0	32.5	35.0
Virginia	-	3.0	23.0	11.5
Washington	7.5	6.0	34.5	34.5
Wisconsin	4.0	5.5	34.0	31.5
Other States ²	2.6	3.4	16.7	14.5
United States	4.4	3.8	21.7	19.9

- Represents zero.

(NA) Not available.

¹ Included in Other States in 2011.

² Includes data for States not published in this table.

Hatchery Production – United States: 2010 and 2011

Item	2010	2011	2011 as percent of 2010
	(1,000)	(1,000)	(percent)
Egg-type			
Eggs in incubators on October 1	39,705	36,546	92
Chicks hatched during September	40,130	40,298	100
Chicks hatched January through September	371,304	367,990	99
Pullets hatched during September for intended placements:			
Hatchery supply flocks	251	274	109
Cumulative potential placements 7-18 months earlier ¹	3,432	2,922	85
Broiler-type			
Eggs in incubators on October 1	623,126	572,344	92
Chicks hatched during September	762,494	721,214	95
Chicks hatched January through September	6,981,448	6,890,874	99
Pullets hatched during September for intended placements:			
Hatchery supply flocks	7,128	6,657	93
Cumulative potential placements 7-15 months earlier ²	61,663	63,576	103

¹ 2011 includes pullet chicks hatched March 2010 through February 2011.

² 2011 includes pullet chicks hatched June 2010 through February 2011.

Egg-Type Eggs in Incubators – Regions and United States: October 1, 2010 and 2011

[See regional listing on page 19]

Region	2010	2011	2011 as percent of 2010
	(1,000 eggs)	(1,000 eggs)	(percent)
North Atlantic	5,431	4,781	88
East North Central	7,466	6,623	89
West North Central	8,716	8,191	94
South Atlantic	4,846	4,186	86
South Central	5,420	5,135	95
West	7,826	7,630	97
United States	39,705	36,546	92

Egg-Type Chicks Hatched by Month – United States: 2010-2011

[Blank data cells indicate estimation period has not yet begun]

Month	By months			Cumulative		
	2010	2011	2011 as percent of 2010	2010	2011	2011 as percent of 2010
	(1,000 chicks)	(1,000 chicks)	(percent)	(1,000 chicks)	(1,000 chicks)	(percent)
January	38,819	41,366	107	38,819	41,366	107
February	39,218	37,336	95	78,037	78,702	101
March	44,914	43,974	98	122,951	122,676	100
April	47,558	43,429	91	170,509	166,105	97
May	43,231	43,305	100	213,740	209,410	98
June	42,331	39,313	93	256,071	248,723	97
July	38,089	37,405	98	294,160	286,128	97
August	37,014	41,564	112	331,174	327,692	99
September	40,130	40,298	100	371,304	367,990	99
October	41,300			412,604		
November	38,849			451,453		
December	37,759			489,212		

Intended Placements of Egg-Type Pullet Chicks for Hatchery Supply Flocks by Month – United States: 2010-2011

[Blank data cells indicate estimation period has not yet begun]

Month	Pullet chicks hatched		2011 as percent of 2010	Cumulative potential placements relative to current supply flocks 7-18 months earlier ¹	
	2010	2011		2011	2012
	(1,000 chicks)	(1,000 chicks)	(percent)	(1,000 chicks)	(1,000 chicks)
January	227	220	97	3,292	2,920
February	296	244	82	3,168	2,936
March	260	253	97	3,130	2,994
April	232	287	124	3,161	3,017
May	230	196	85	3,054	
June	318	302	95	3,027	
July	218	234	107	2,981	
August	253	311	123	2,974	
September	251	274	109	2,922	
October	170			2,915	
November	263			2,970	
December	263			2,936	
Total	2,981				

¹ For September 2011, includes breeder pullet chicks hatched March 2010 through February 2011. The 7-18 months represent the first laying cycle. Molting and additional laying cycles will increase the cumulative potential placements.

Broiler-Type Eggs in Incubators – Regions and United States: October 1, 2010 and 2011

[See regional listing on page 19]

Region	2010	2011	2011 as percent of 2010
	(1,000 eggs)	(1,000 eggs)	(percent)
North Atlantic	12,677	11,810	93
East North Central	11,988	11,414	95
West North Central	28,142	26,941	96
South Atlantic	229,287	218,215	95
South Central	320,531	282,611	88
West	20,501	21,353	104
United States	623,126	572,344	92

Broiler-Type Chicks Hatched – States and United States: September 2010 and 2011

State	During September			January-September		
	2010	2011	2011 as percent of 2010	2010	2011	2011 as percent of 2010
	(1,000 chicks)	(1,000 chicks)	(percent)	(1,000 chicks)	(1,000 chicks)	(percent)
Alabama	107,962	97,764	91	985,330	957,188	97
Arkansas	85,559	74,188	87	787,133	744,854	95
Delaware	13,949	10,585	76	119,125	115,758	97
Florida	4,784	4,784	100	43,377	43,305	100
Georgia	115,444	113,601	98	1,032,862	1,071,917	104
Kentucky	27,883	28,070	101	254,500	251,903	99
Louisiana	11,980	11,697	98	112,138	110,132	98
Maryland	26,244	26,500	101	270,888	248,623	92
Mississippi	67,198	65,281	97	631,528	624,424	99
North Carolina	69,544	68,629	99	626,394	648,124	103
Oklahoma	23,618	23,759	101	223,755	222,963	100
Pennsylvania	13,551	13,300	98	120,195	125,484	104
South Carolina	20,025	18,335	92	184,016	172,017	93
Texas	57,253	50,096	87	514,097	492,537	96
Virginia	22,259	21,558	97	207,721	201,940	97
California, Missouri, Tennessee, and West Virginia	70,506	68,072	97	637,074	627,410	98
19 States ¹	737,759	696,219	94	6,750,133	6,658,579	99
Other States ²	24,735	24,995	101	231,315	232,295	100
United States	762,494	721,214	95	6,981,448	6,890,874	99

¹ States in the weekly hatchery production estimating program.

² Not published separately to avoid disclosing data for individual operations.

Broiler-Type Chicks Hatched by Month – United States: 2010-2011

[Blank data cells indicate estimation period has not yet begun]

Month	By months			Cumulative		
	2010	2011	2011 as percent of 2010	2010	2011	2011 as percent of 2010
	(1,000 chicks)	(1,000 chicks)	(percent)	(1,000 chicks)	(1,000 chicks)	(percent)
January	775,431	781,123	101	775,431	781,123	101
February	700,050	708,724	101	1,475,481	1,489,847	101
March	787,939	793,957	101	2,263,420	2,283,804	101
April	768,296	779,859	102	3,031,716	3,063,663	101
May	799,068	806,574	101	3,830,784	3,870,237	101
June	787,703	768,173	98	4,618,487	4,638,410	100
July	801,716	770,368	96	5,420,203	5,408,778	100
August	798,751	760,882	95	6,218,954	6,169,660	99
September	762,494	721,214	95	6,981,448	6,890,874	99
October	768,094			7,749,542		
November	741,093			8,490,635		
December	786,440			9,277,075		

Intended Placements of Broiler-Type Pullet Chicks for Hatchery Supply Flocks by Month and Total: 2010-2011

[Blank data cells indicate estimation period has not yet begun]

Month	Pullet chicks hatched		2011 as percent of 2010	Cumulative potential placements relative to current supply flocks 7-15 months earlier ¹	
	2010 (1,000 chicks)	2011 (1,000 chicks)		2011 (1,000 chicks)	2012 (1,000 chicks)
United States placements					
January	6,637	6,989	105	62,996	64,366
February	7,021	7,107	101	63,283	63,934
March	6,673	7,058	106	63,250	63,578
April	6,825	7,044	103	63,751	63,464
May	8,351	7,721	92	63,990	
June	7,128	7,211	101	64,558	
July	6,675	6,444	97	64,656	
August	7,313	7,233	99	64,820	
September	7,128	6,657	93	63,576	
October	6,876			63,506	
November	7,589			63,875	
December	6,771			64,283	
Annual total	84,987				
Total placements ²					
January	8,626	8,548	99		
February	9,151	8,782	96		
March	9,033	9,023	100		
April	8,210	8,944	109		
May	10,338	9,612	93		
June	9,055	9,225	102		
July	8,520	8,131	95		
August	9,009	8,700	97		
September	9,087	8,546	94		
October	8,553				
November	9,314				
December	8,596				
Annual total	107,492				

¹ For September 2011, includes breeder pullet chicks hatched June 2010 through February 2011.

² United States production of intended placements worldwide.

Statistical Methodology

Survey Procedures: Primary data for the *Chickens and Eggs* report are from weekly and/or monthly questionnaires sent to producers. An attempt is made to collect information for layer and egg estimates from each known contractor and independent producer who has at least 30,000 table egg layers, flocks of hatchery supply layers, or pullet only operations with at least 500 pullets. Coverage for operations with less than 30,000 table egg layers are estimated each month based on data reported in December. Approximately 650 contractors, independent egg producers, and pullet only operations are contacted each month. All known hatcheries, approximately 300, are contacted for information on a weekly and/or monthly basis.

Estimating Procedures: Sound statistical methodology is employed to derive estimates from the reported data. All data are analyzed for unusual values. Data from each operation are compared to their own past operating profile and to trends from similar operations. Data for missing operations are estimated based on similar operations or historical data. NASS field offices prepare these estimates by using a combination of survey indications and historic trends. Individual State estimates are reviewed by the Agricultural Statistics Board for reasonableness. Individual hatchery data are summed to State, regional, and United States totals.

For chicken hatcheries, chicks hatched consist of all chicks of domesticated breeds including males and chicks destined for hatchery supply flocks and research purposes. Eggs set are eggs in incubators for the purpose of hatching. The relationship of egg-type chicks hatched to chicken inventory and poultry marketings are carefully monitored. The disposition of egg-type chicks hatched prior to placement into the laying flock can vary significantly, which can make comparisons to changes in layer inventory inconsistent over time. Broiler chicks placed are specifically placed on feed for meat production. Intended placement data reported by leading breeders include pullet chicks expected from eggs sold the preceding month. The breeders in this report account for a large percentage of replacement pullets for hatchery supply flocks. Production of replacement pullets by these breeders indicates the number of pullets available to hatchery supply layer flocks several months before the pullets will actually move into the laying flocks. "Hatchery Supply Flocks" include all generations of layers which could lay eggs to supply a hatchery. This includes the generations of parents, grandparents, great-grandparents, pedigree, etc. Also included are research flocks, vaccine flocks, and specific pathogen-free flocks. The broiler cumulative potential placements are a moving total of the intended placements 7-15 months earlier. The egg-type cumulative potential placements of 7-18 months earlier represent the first laying cycle. Molting and additional laying cycles will increase the cumulative potential placements of egg-type hatching flocks.

Revision Policy: The previous month's estimates are subject to revision if late reports or corrected data indicates a different level. Additionally, revisions after the monthly report will be made at the end of the marketing year and published in the annual reports of *Chickens and Eggs Summary* and *Hatchery Production Summary*. Estimates will also be reviewed for chickens and eggs after data from the 5-year Census of Agriculture are available. No revisions will be made after that date.

Reliability: Estimates are based on a census of all known contractors and independent producers who have at least 30,000 table egg layers, flocks of hatchery supply layers, pullet only operations with at least 500 pullets, or operating hatcheries and therefore, have no sampling error. However, estimates are subject to errors such as omission, duplication, and mistakes in reporting, recording, and processing the data. While these errors cannot be measured directly, they are minimized through strict quality controls in the data collection process and a careful review of all reported data for consistency and reasonableness.

To assist in evaluating the reliability of the estimates in this report, the "Root Mean Square Error" is shown for selected items in the following table. The "Root Mean Square Error" is a statistical measure based on past performance and is computed using the differences between first and final estimates. The "Root Mean Square Error" for all layers over the past 24 months is 0.3 percent. This means that chances are 2 out of 3 that the final estimate will not be above or below the current estimate of 336 million layers by more than 0.3 percent. Chances are 9 out of 10 that the difference will not exceed 0.6 percent.

Reliability of Layer and Egg Estimates

[Based on data for the past twenty-four months]

Item	Root mean square error	90 percent confidence level	Difference between first and latest estimate				
			Average	Smallest	Largest	Months	
						Below latest	Above latest
All layers	(percent) 0.3	(percent) 0.6	(1,000) 934	(1,000) 26	(1,000) 2,021	(number) 21	(number) 3
Eggs	0.3	0.5	(million) 20	(million) 1	(million) 45	21	3

Regional Listing

- North Atlantic:** Connecticut, Maine, Massachusetts, New Hampshire, New Jersey, New York, Pennsylvania, Rhode Island, Vermont.
- East North Central:** Illinois, Indiana, Michigan, Ohio, Wisconsin.
- West North Central:** Iowa, Kansas, Minnesota, Missouri, Nebraska, North Dakota, South Dakota.
- South Atlantic:** Delaware, Florida, Georgia, Maryland, North Carolina, South Carolina, Virginia, West Virginia.
- South Central:** Alabama, Arkansas, Kentucky, Louisiana, Mississippi, Oklahoma, Tennessee, Texas.
- West:** Alaska, Arizona, California, Colorado, Hawaii, Idaho, Montana, New Mexico, Nevada, Oregon, Utah, Washington, Wyoming.

Terms and Definitions of Chickens and Eggs Estimates

All Layers includes both table egg and hatching egg flocks regardless of size.

Intended Placements are reported by leading breeders. Coverage may not be 100 percent. Includes expected pullet chicks from eggs sold during the preceding month at the rate of 125 pullet chicks per case of 30 dozen eggs.

Information Contacts

Listed below are the commodity specialists in the Livestock Branch of the National Agricultural Statistics Service to contact for additional information. E-mail inquiries may be sent to nass@nass.usda.gov

- Dan Kerestes, Chief, Livestock Branch (202) 720-3570
- Bruce Boess, Head, Poultry and Specialty Commodities Section (202) 720-4447
- Cody Brokmeyer – Poultry Slaughter, Turkey Hatchery, Turkeys Raised (202) 690-3237
- David Colwell – Cold Storage (202) 720-8784
- Kim Linonis – Layers, Eggs (202) 690-8632
- Miste Salmon – Broiler Hatchery, Catfish Processing, Catfish Production, Census of Aquaculture,
 Chicken Hatchery, Egg Products, Honey, Mink, Trout Production (202) 720-3244

Access to NASS Reports

For your convenience, you may access NASS reports and products the following ways:

- All reports are available electronically, at no cost, on the NASS web site: <http://www.nass.usda.gov>
- Both national and state specific reports are available via a free e-mail subscription. To set-up this free subscription, visit <http://www.nass.usda.gov> and in the “Receive NASS Updates” box under “Receive reports by Email,” click on “National” or “State” to select the reports you would like to receive.
- Printed reports may be purchased from the National Technical Information Service (NTIS) by calling toll-free (800) 999-6779, or (703) 605-6220 if calling from outside the United States or Canada. Accepted methods of payment are Visa, MasterCard, check, or money order.

For more information on NASS surveys and reports, call the NASS Agricultural Statistics Hotline at (800) 727-9540, 7:30 a.m. to 4:00 p.m. ET, or e-mail: nass@nass.usda.gov.

The United States Department of Agriculture (USDA) prohibits discrimination in all its programs and activities on the basis of race, color, national origin, age, disability, and where applicable, sex, marital status, familial status, parental status, religion, sexual orientation, political beliefs, genetic information, reprisal, or because all or a part of an individual's income is derived from any public assistance program. (Not all prohibited bases apply to all programs.) Persons with disabilities who require alternative means for communication of program information (Braille, large print, audiotape, etc.) should contact USDA's TARGET Center at (202) 720-2600 (voice and TDD).

To file a complaint of discrimination, write to USDA, Assistant Secretary for Civil Rights, Office of the Assistant Secretary for Civil Rights, 1400 Independence Avenue, S.W., Stop 9410, Washington, DC 20250-9410, or call toll-free at (866) 632-9992 (English) or (800) 877-8339 (TDD) or (866) 377-8642 (English Federal-relay) or (800) 845-6136 (Spanish Federal-relay). USDA is an equal opportunity provider and employer.