



Chickens and Eggs

ISSN: 1948-9064

Released November 22, 2011, by the National Agricultural Statistics Service (NASS), Agricultural Statistics Board, United States Department of Agriculture (USDA).

Special Note

Beginning with this publication, Missouri will be published separately in the **Broiler-Type Chicks Hatched** table on page 16.

October Egg Production Up 1 Percent

United States egg production totaled 7.78 billion during October 2011, up 1 percent from last year. Production included 6.74 billion table eggs, and 1.04 billion hatching eggs, of which 968 million were broiler-type and 70 million were egg-type. The total number of layers during October 2011 averaged 336 million, down slightly from last year. October egg production per 100 layers was 2,317 eggs, up 1 percent from October 2010.

All layers in the United States on November 1, 2011 totaled 337 million, down slightly from last year. The 337 million layers consisted of 283 million layers producing table or market type eggs, 50.2 million layers producing broiler-type hatching eggs, and 2.94 million layers producing egg-type hatching eggs. Rate of lay per day on November 1, 2011, averaged 74.7 eggs per 100 layers, up 1 percent from November 1, 2010.

Egg-Type Chicks Hatched Down 8 Percent

Egg-type chicks hatched during October 2011 totaled 37.8 million, down 8 percent from October 2010. Eggs in incubators totaled 38.3 million on November 1, 2011, down slightly from a year ago.

Domestic placements of egg-type pullet chicks for future hatchery supply flocks by leading breeders totaled 266 thousand during October 2011, up 56 percent from October 2010.

Broiler-Type Chicks Hatched Down 7 Percent

Broiler-type chicks hatched during October 2011 totaled 717 million, down 7 percent from October 2010. Eggs in incubators totaled 575 million on November 1, 2011, down 7 percent from a year earlier.

Leading breeders placed 6.29 million broiler-type pullet chicks for future domestic hatchery supply flocks during October 2011, down 9 percent from October 2010.

This page intentionally left blank.

Contents

Average Number of All Layers on Hand During the Month – United States: 2010-2011.....	4
Egg Production During the Month by Type – United States: 2010-2011	4
Average Number of Layers During the Month – United States.....	5
All Egg Production During the Month – United States	5
Layers on Hand and Eggs Produced by Type and Forced Molt – United States: September-October 2010 and 2011.....	6
Layers on Hand and Eggs Produced by Type and Forced Molt – United States: October-November 2010 and 2011.....	7
Layers on Hand and Eggs Produced – States and United States: During September 2010 and 2011	8
Layers on Hand and Eggs Produced – States and United States: During October 2010 and 2011.....	9
Egg Production by Type – States and United States: September 2010 and 2011	10
Egg Production by Type – States and United States: October 2010 and 2011	11
Forced Molt as Percent of All Layers by Month – United States: 2010-2011	12
Forced Molt as Percent of All Layers – States and United States: November 1, 2010 and 2011	12
Hatchery Production – United States: 2010 and 2011	13
Egg-Type Eggs in Incubators – Regions and United States: November 1, 2010 and 2011	14
Egg-Type Chicks Hatched by Month – United States: 2010-2011	14
Intended Placements of Egg-Type Pullet Chicks for Hatchery Supply Flocks by Month – United States: 2010-2011	15
Broiler-Type Eggs in Incubators – Regions and United States: November 1, 2010 and 2011	15
Broiler-Type Chicks Hatched – States and United States: September 2010 and 2011	16
Broiler-Type Chicks Hatched by Month – United States: 2010-2011	16
Intended Placements of Broiler-Type Pullet Chicks for Hatchery Supply Flocks by Month and Total: 2010-2011	17
Statistical Methodology	18
Regional Listing	19
Terms and Definitions of Chickens and Eggs Estimates	19
Information Contacts	19

Average Number of All Layers on Hand During the Month – United States: 2010-2011

[Blank data cells indicate estimation period has not yet begun]

Month	2010		2011	
	(1,000 layers)		(1,000 layers)	
December ¹		340,936		342,661
January		340,596		341,701
February		340,486		339,338
March		342,098		340,461
April		341,318		340,688
May		339,344		337,919
June		339,750		336,466
July		339,929		336,136
August		340,084		336,022
September		338,739		335,727
October		336,804		335,818
November		339,447		

¹ December preceding year.

Egg Production During the Month by Type – United States: 2010-2011

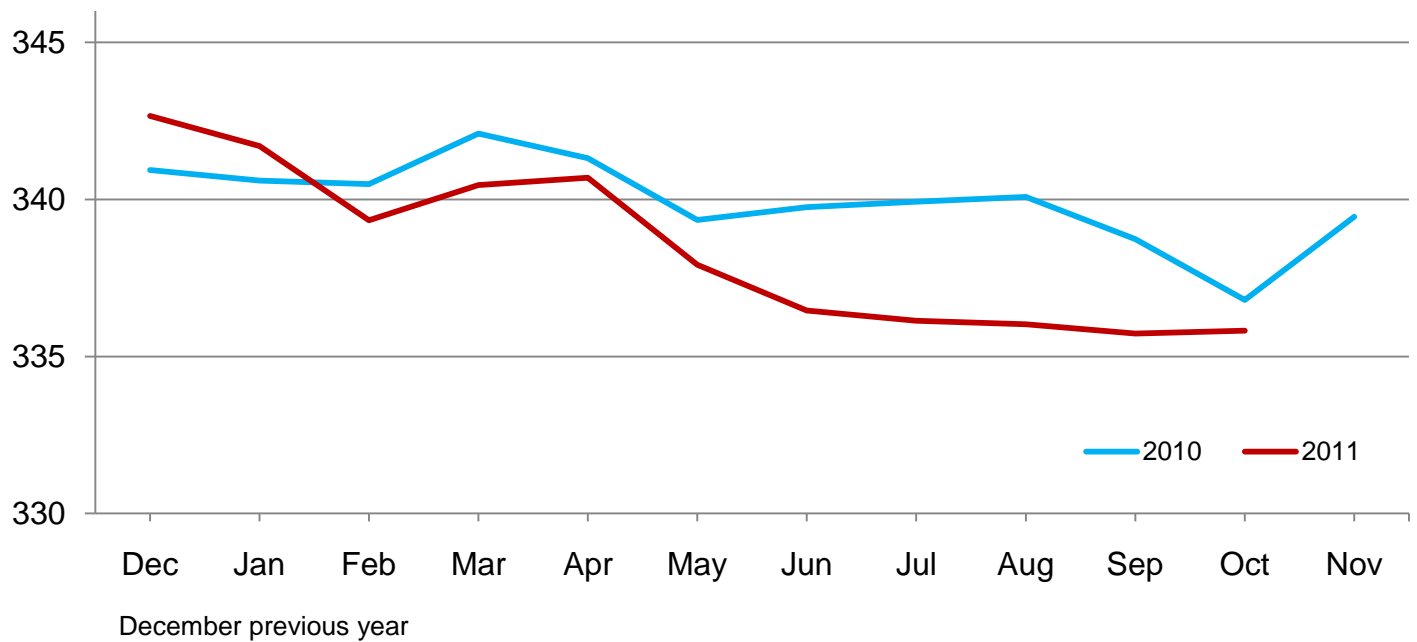
[Blank data cells indicate estimation period has not yet begun. Totals may not add due to rounding]

Month	Total eggs		Table eggs		Hatching eggs	
	2010	2011	2010	2011	2010	2011
	(million eggs)	(million eggs)	(million eggs)	(million eggs)	(million eggs)	(million eggs)
December ¹	7,853	7,920	6,779	6,850	1,074	1,070
January	7,724	7,821	6,637	6,739	1,087	1,083
February	6,935	7,006	5,950	6,029	985	976
March	7,839	7,836	6,740	6,754	1,098	1,083
April	7,578	7,617	6,503	6,555	1,075	1,062
May	7,716	7,777	6,607	6,671	1,109	1,107
June	7,484	7,505	6,415	6,438	1,069	1,068
July	7,719	7,740	6,610	6,656	1,109	1,085
August	7,765	7,734	6,669	6,671	1,096	1,064
September	7,514	7,510	6,464	6,494	1,050	1,017
October	7,698	7,780	6,618	6,743	1,080	1,038
November	7,573		6,538		1,036	
During year	91,398		78,530		12,868	

¹ December preceding year.

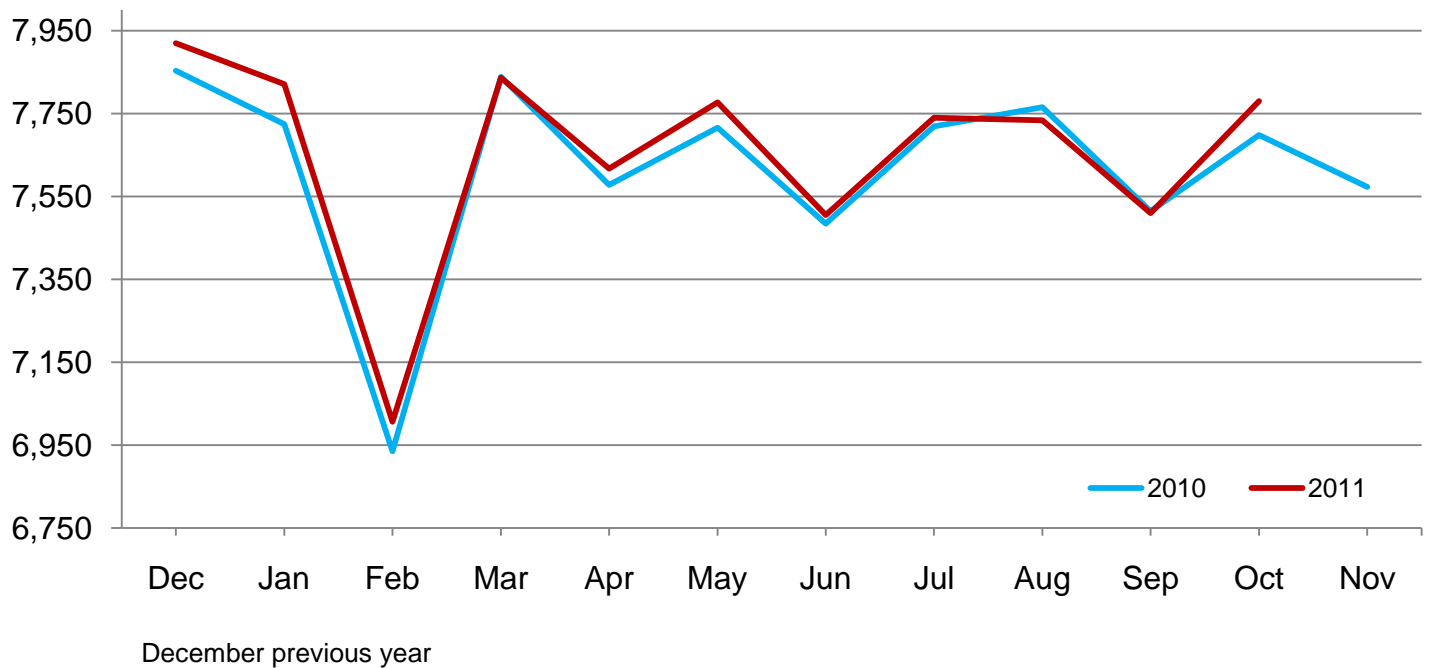
Average Layers During the Month – United States

Million layers



All Egg Production During the Month – United States

Million eggs



**Layers on Hand and Eggs Produced by Type and Forced Molt – United States:
September-October 2010 and 2011**

[Totals may not add due to rounding]

Item	2010	2011	2011 as percent of 2010
Layers during September			
All layers 1,000	338,739	335,727	99
Table egg type 1,000	282,199	281,743	100
Hatching egg type 1,000	56,540	53,984	95
Broiler-type hatching 1,000	53,602	50,980	95
Egg-type hatching 1,000	2,938	3,004	102
Eggs per 100 layers during September			
All layers number	2,218	2,237	101
Table egg type number	2,291	2,305	101
Hatching egg type number	1,857	1,884	101
Broiler-type hatching number	1,828	1,862	102
Egg-type hatching number	2,383	2,264	95
Eggs produced during September			
All layers million	7,514	7,510	100
Table egg type million	6,464	6,494	100
Hatching egg type million	1,050	1,017	97
Broiler-type hatching million	980	949	97
Egg-type hatching million	70	68	97
Layers on October 1			
All layers 1,000	336,691	335,067	100
Table egg type 1,000	280,158	281,477	100
Hatching egg type 1,000	56,533	53,590	95
Broiler-type hatching 1,000	53,608	50,624	94
Egg-type hatching 1,000	2,925	2,966	101
Eggs per 100 layers on October 1			
All layers number	73.7	74.6	101
Table egg type number	76.1	76.9	101
Hatching egg type number	61.5	62.7	102
Broiler-type hatching number	60.5	61.9	102
Egg-type hatching number	79.7	77.0	97
Forced molt layers on October 1			
Being molted percent	4.4	3.9	89
Molt completed percent	21.7	20.0	92
Layers sold for slaughter during September 1,000	13,993	15,460	110
Layers rendered, died, destroyed, composted or disappeared for any reason during September 1,000	9,982	6,388	64
Pullets on October 1 1,000	104,763	104,824	100
Pullets added during September ¹ 1,000	22,951	23,207	101

¹ Pullet chicks less than 3 days old added to pullet flocks.

Layers on Hand and Eggs Produced by Type and Forced Molt – United States: October-November 2010 and 2011

[Totals may not add due to rounding]

Item	2010	2011	2011 as percent of 2010
Layers during October			
All layers 1,000	336,804	335,818	100
Table egg type 1,000	279,977	282,458	101
Hatching egg type 1,000	56,827	53,360	94
Broiler-type hatching 1,000	53,895	50,402	94
Egg-type hatching 1,000	2,932	2,958	101
Eggs per 100 layers during October			
All layers number	2,286	2,317	101
Table egg type number	2,364	2,387	101
Hatching egg type number	1,901	1,945	102
Broiler-type hatching number	1,872	1,921	103
Egg-type hatching number	2,422	2,366	98
Eggs produced during October			
All layers million	7,698	7,780	101
Table egg type million	6,618	6,743	102
Hatching egg type million	1,080	1,038	96
Broiler-type hatching million	1,009	968	96
Egg-type hatching million	71	70	99
Layers on November 1			
All layers 1,000	337,300	336,534	100
Table egg type 1,000	280,189	283,420	101
Hatching egg type 1,000	57,111	53,114	93
Broiler-type hatching 1,000	54,177	50,170	93
Egg-type hatching 1,000	2,934	2,944	100
Eggs per 100 layers on November 1			
All layers number	73.8	74.7	101
Table egg type number	76.4	77.0	101
Hatching egg type number	60.9	62.5	103
Broiler-type hatching number	60.1	61.8	103
Egg-type hatching number	76.0	75.1	99
Forced molt layers on November 1			
Being molted percent	2.7	2.3	85
Molt completed percent	22.5	21.0	93
Layers sold for slaughter during October 1,000	11,473	14,011	122
Layers rendered, died, destroyed, composted or disappeared for any reason during October 1,000	9,234	5,877	64
Pullets on November 1 1,000	104,815	102,589	98
Pullets added during October ¹ 1,000	22,399	20,657	92

¹ Pullet chicks less than 3 days old added to pullet flocks.

Layers on Hand and Eggs Produced – States and United States: During September 2010 and 2011

State	Table egg layers in flocks 30,000 and above		All layers		Eggs per 100 for all layers	
	2010	2011	2010	2011	2010	2011
	(1,000 layers)	(1,000 layers)	(1,000 layers)	(1,000 layers)	(eggs)	(eggs)
Alabama	1,406	1,334	9,605	9,081	1,895	1,894
Arkansas	3,228	3,385	11,914	11,458	1,981	2,016
California	19,526	19,452	19,832	19,747	2,274	2,264
Colorado	3,179	4,170	3,560	4,625	2,528	2,227
Connecticut	2,292	2,162	2,360	2,232	2,415	2,375
Florida	9,153	9,168	9,524	9,553	2,247	2,313
Georgia	8,179	7,855	16,818	16,363	2,117	2,163
Hawaii ¹	303	(NA)	348	(NA)	1,695	(NA)
Illinois	4,417	4,238	4,622	4,446	2,315	2,362
Indiana	22,604	22,001	23,332	22,720	2,267	2,311
Iowa	53,748	51,988	54,580	52,917	2,213	2,220
Maine	3,526	3,540	3,581	3,595	2,402	2,225
Maryland	2,119	1,737	2,257	1,874	2,215	2,241
Michigan	9,924	10,023	10,074	10,175	2,412	2,319
Minnesota	9,894	9,623	10,399	10,125	2,279	2,262
Mississippi	1,385	1,453	6,061	5,758	1,963	2,049
Missouri	5,820	5,907	7,143	7,097	2,226	2,395
Nebraska	9,377	8,931	9,427	8,981	2,440	2,427
New York	3,725	4,128	3,949	4,367	2,380	2,427
North Carolina	5,840	5,461	12,935	12,351	2,002	2,113
Ohio	27,656	27,486	28,131	27,974	2,225	2,231
Oregon	2,218	2,199	2,365	2,356	2,452	2,292
Pennsylvania	22,652	24,123	23,779	25,280	2,372	2,350
South Carolina	3,100	2,996	4,404	4,196	2,112	2,264
South Dakota	2,365	2,382	2,405	2,422	2,245	2,519
Texas	13,593	14,195	17,798	18,084	2,202	2,212
Utah	3,475	3,514	3,505	3,544	2,254	2,398
Virginia	1,241	1,291	2,982	2,974	2,146	2,085
Washington	6,174	6,779	6,289	6,894	2,274	2,306
Wisconsin	4,247	3,963	4,832	4,543	2,194	2,355
Other States ²	11,341	11,749	19,928	19,995	2,118	2,116
United States	277,707	277,233	338,739	335,727	2,218	2,237

(NA) Not available.

¹ Included in Other States in 2011.

² Includes data for States not published in this table.

Layers on Hand and Eggs Produced – States and United States: During October 2010 and 2011

State	Table egg layers in flocks 30,000 and above		All layers		Eggs per 100 for all layers	
	2010	2011	2010	2011	2010	2011
	(1,000 layers)	(1,000 layers)	(1,000 layers)	(1,000 layers)	(eggs)	(eggs)
Alabama	1,370	1,417	9,498	8,974	1,948	1,961
Arkansas	3,271	3,408	12,101	11,200	2,025	2,063
California	19,278	19,660	19,586	19,953	2,364	2,351
Colorado	3,177	4,265	3,586	4,718	2,538	2,374
Connecticut	2,219	2,108	2,287	2,175	2,405	2,391
Florida	8,973	9,320	9,354	9,681	2,320	2,407
Georgia	8,339	7,824	17,027	16,397	2,214	2,220
Hawaii ¹	302	(NA)	347	(NA)	1,671	(NA)
Illinois	4,428	4,368	4,635	4,574	2,309	2,449
Indiana	22,277	21,699	23,002	22,387	2,322	2,332
Iowa	52,061	52,301	52,947	53,235	2,276	2,309
Maine	3,545	3,556	3,600	3,611	2,417	2,326
Maryland	1,994	1,782	2,145	1,924	2,145	2,339
Michigan	9,756	10,389	9,906	10,540	2,524	2,419
Minnesota	10,031	9,640	10,551	10,137	2,379	2,387
Mississippi	1,400	1,473	5,970	5,646	2,027	2,108
Missouri	5,870	5,684	7,142	6,902	2,310	2,420
Nebraska	9,447	8,999	9,497	9,049	2,506	2,486
New York	3,758	4,132	3,983	4,363	2,511	2,498
North Carolina	5,825	5,665	13,060	12,529	2,060	2,123
Ohio	27,594	27,225	28,061	27,715	2,302	2,345
Oregon	2,198	2,181	2,331	2,337	2,488	2,353
Pennsylvania	22,686	23,847	23,800	25,029	2,471	2,453
South Carolina	3,030	2,964	4,352	4,053	2,229	2,295
South Dakota	2,356	2,359	2,396	2,399	2,295	2,626
Texas	13,746	14,242	18,018	18,143	2,314	2,331
Utah	3,370	3,505	3,400	3,535	2,353	2,433
Virginia	1,243	1,284	2,992	2,994	2,139	2,238
Washington	6,340	6,783	6,455	6,898	2,153	2,464
Wisconsin	4,195	4,168	4,754	4,733	2,272	2,387
Other States ²	11,406	11,700	20,021	19,987	2,168	2,171
United States	275,485	277,948	336,804	335,818	2,286	2,317

(NA) Not available.

¹ Included in Other States in 2011.

² Includes data for States not published in this table.

Egg Production by Type – States and United States: September 2010 and 2011

[Totals may not add due to rounding. Data by type of flock not shown for some States to avoid disclosing individual operations, data included in United States totals]

State	Total production		Table eggs		Hatching eggs	
	2010	2011	2010	2011	2010	2011
	(million eggs)	(million eggs)	(million eggs)	(million eggs)	(million eggs)	(million eggs)
Alabama	182	172	34	31	148	141
Arkansas	236	231	78	80	158	151
California	451	447	(D)	(D)	(D)	(D)
Colorado	90	103	(D)	(D)	(D)	(D)
Connecticut	57	53	(D)	(D)	(D)	(D)
Florida	214	221	208	215	6	6
Georgia	356	354	188	192	168	162
Hawaii ¹	5.9	(NA)	5.9	(NA)	-	(NA)
Illinois	107	105	104	102	3	3
Indiana	529	525	516	512	13	13
Iowa	1,208	1,175	1,196	1,160	12	15
Maine	86	80	(D)	(D)	(D)	(D)
Maryland	50	42	48	40	2	2
Michigan	243	236	(D)	(D)	(D)	(D)
Minnesota	237	229	228	221	9	8
Mississippi	119	118	33	36	86	82
Missouri	159	170	(D)	(D)	(D)	(D)
Nebraska	230	218	230	218	-	-
New York	94	106	(D)	(D)	(D)	(D)
North Carolina	259	261	136	137	123	124
Ohio	626	624	(D)	(D)	(D)	(D)
Oregon	58	54	56	52	2	2
Pennsylvania	564	594	545	576	19	18
South Carolina	93	95	71	75	22	20
South Dakota	54	61	54	61	-	-
Texas	392	400	(D)	(D)	(D)	(D)
Utah	79	85	79	85	-	-
Virginia	64	62	32	30	32	32
Washington	143	159	(D)	(D)	(D)	(D)
Wisconsin	106	107	(D)	(D)	(D)	(D)
Other States ²	422	423	290	296	132	128
United States	7,514	7,510	6,464	6,494	1,050	1,017

- Represents zero.

(D) Withheld to avoid disclosing data for individual operations.

(NA) Not available.

¹ Included in Other States in 2011.

² Includes data for States not published in this table.

Egg Production by Type – States and United States: October 2010 and 2011

[Totals may not add due to rounding. Data by type of flock not shown for some States to avoid disclosing individual operations, data included in United States totals]

State	Total production		Table eggs		Hatching eggs	
	2010	2011	2010	2011	2010	2011
	(million eggs)	(million eggs)	(million eggs)	(million eggs)	(million eggs)	(million eggs)
Alabama	185	176	35	34	150	142
Arkansas	245	231	81	80	164	151
California	463	469	(D)	(D)	(D)	(D)
Colorado	91	112	(D)	(D)	(D)	(D)
Connecticut	55	52	(D)	(D)	(D)	(D)
Florida	217	233	211	227	6	6
Georgia	377	364	203	194	174	170
Hawaii ¹	5.8	(NA)	5.8	(NA)	-	(NA)
Illinois	107	112	104	109	3	3
Indiana	534	522	522	510	12	12
Iowa	1,205	1,229	1,191	1,213	14	16
Maine	87	84	(D)	(D)	(D)	(D)
Maryland	46	45	44	43	2	2
Michigan	250	255	(D)	(D)	(D)	(D)
Minnesota	251	242	242	233	9	9
Mississippi	121	119	35	36	86	83
Missouri	165	167	(D)	(D)	(D)	(D)
Nebraska	238	225	238	225	-	-
New York	100	109	(D)	(D)	(D)	(D)
North Carolina	269	266	141	140	128	126
Ohio	646	650	(D)	(D)	(D)	(D)
Oregon	58	55	56	53	2	2
Pennsylvania	588	614	569	595	19	19
South Carolina	97	93	74	73	23	20
South Dakota	55	63	55	63	-	-
Texas	417	423	(D)	(D)	(D)	(D)
Utah	80	86	80	86	-	-
Virginia	64	67	31	34	33	33
Washington	139	170	(D)	(D)	(D)	(D)
Wisconsin	108	113	(D)	(D)	(D)	(D)
Other States ²	434	434	298	305	136	130
United States	7,698	7,780	6,618	6,743	1,080	1,038

- Represents zero.

(D) Withheld to avoid disclosing data for individual operations.

(NA) Not available.

¹ Included in Other States in 2011.

² Includes data for States not published in this table.

Forced Molt as Percent of All Layers by Month – United States: 2010-2011

[As of the first of the month. Blank data cells indicate estimation period has not yet begun]

Month	Being molted		Molt completed	
	2010 (percent)	2011 (percent)	2010 (percent)	2011 (percent)
January	2.7	2.8	20.8	21.3
February	3.6	3.6	20.3	20.3
March	3.2	3.1	21.2	20.2
April	2.8	2.6	21.3	20.0
May	4.2	3.0	21.5	20.0
June	3.3	3.8	22.7	19.4
July	3.3	3.5	22.5	19.5
August	3.4	3.6	22.6	19.3
September	2.6	3.3	23.0	20.0
October	4.4	3.9	21.7	20.0
November	2.7	2.3	22.5	21.0
December	1.8		22.5	

Forced Molt as Percent of All Layers – States and United States: November 1, 2010 and 2011

[As of the first of the month]

State	Being molted		Molt completed	
	2010 (percent)	2011 (percent)	2010 (percent)	2011 (percent)
Alabama	0.5	0.5	5.5	7.5
Arkansas	2.0	2.0	9.5	9.5
California	3.0	3.5	30.5	30.5
Colorado	5.5	-	27.0	19.5
Connecticut	-	-	8.5	9.5
Florida	3.5	6.0	42.5	40.5
Georgia	2.0	-	19.0	15.0
Hawaii ¹	9.0	(NA)	48.5	(NA)
Illinois	15.0	2.0	19.0	32.0
Indiana	1.5	4.5	29.5	23.0
Iowa	5.0	2.5	36.5	35.0
Maine	-	-	-	-
Maryland	17.0	5.0	12.0	8.0
Michigan	2.5	4.0	19.5	13.0
Minnesota	2.0	3.0	22.5	25.0
Mississippi	-	2.0	11.5	12.0
Missouri	1.0	2.0	15.0	21.0
Nebraska	1.5	-	2.0	2.0
New York	1.0	1.0	11.0	6.0
North Carolina	-	-	17.5	16.5
Ohio	2.0	2.0	21.5	13.5
Oregon	4.0	4.0	28.5	36.5
Pennsylvania	1.0	3.0	10.5	9.5
South Carolina	-	2.0	19.0	18.0
South Dakota	10.5	2.5	33.0	16.5
Texas	2.0	1.0	20.5	22.5
Utah	3.0	3.0	41.0	39.5
Virginia	-	-	22.0	16.0
Washington	4.5	4.5	32.0	37.0
Wisconsin	5.0	2.0	33.5	32.5
Other States ²	2.5	2.6	16.6	14.8
United States	2.7	2.3	22.5	21.0

- Represents zero.

(NA) Not available.

¹ Included in Other States in 2011.

² Includes data for States not published in this table.

Hatchery Production – United States: 2010 and 2011

Item	2010	2011	2011 as percent of 2010
	(1,000)	(1,000)	(percent)
Egg-type			
Eggs in incubators on November 1	38,413	38,312	100
Chicks hatched during October	41,300	37,845	92
Chicks hatched January through October	412,604	405,835	98
Pullets hatched during October for intended placements:			
Hatchery supply flocks	170	266	156
Cumulative potential placements 7-18 months earlier ¹	3,415	2,915	85
Broiler-type			
Eggs in incubators on November 1	619,697	575,413	93
Chicks hatched during October	768,094	717,354	93
Chicks hatched January through October	7,749,542	7,608,228	98
Pullets hatched during October for intended placements:			
Hatchery supply flocks	6,876	6,289	91
Cumulative potential placements 7-15 months earlier ²	61,179	63,506	104

¹ 2011 includes pullet chicks hatched April 2010 through March 2011.

² 2011 includes pullet chicks hatched July 2010 through March 2011.

Egg-Type Eggs in Incubators – Regions and United States: November 1, 2010 and 2011

[See regional listing on page 19]

Region	2010	2011	2011 as percent of 2010
	(1,000 eggs)	(1,000 eggs)	(percent)
North Atlantic	4,687	5,157	110
East North Central	8,075	7,333	91
West North Central	8,789	8,933	102
South Atlantic	5,076	4,952	98
South Central	4,328	4,939	114
West	7,458	6,998	94
United States	38,413	38,312	100

Egg-Type Chicks Hatched by Month – United States: 2010-2011

[Blank data cells indicate estimation period has not yet begun]

Month	By months			Cumulative		
	2010	2011	2011 as percent of 2010	2010	2011	2011 as percent of 2010
	(1,000 chicks)	(1,000 chicks)	(percent)	(1,000 chicks)	(1,000 chicks)	(percent)
January	38,819	41,366	107	38,819	41,366	107
February	39,218	37,336	95	78,037	78,702	101
March	44,914	43,974	98	122,951	122,676	100
April	47,558	43,429	91	170,509	166,105	97
May	43,231	43,305	100	213,740	209,410	98
June	42,331	39,313	93	256,071	248,723	97
July	38,089	37,405	98	294,160	286,128	97
August	37,014	41,564	112	331,174	327,692	99
September	40,130	40,298	100	371,304	367,990	99
October	41,300	37,845	92	412,604	405,835	98
November	38,849			451,453		
December	37,759			489,212		

Intended Placements of Egg-Type Pullet Chicks for Hatchery Supply Flocks by Month – United States: 2010-2011

[Blank data cells indicate estimation period has not yet begun]

Month	Pullet chicks hatched		2011 as percent of 2010	Cumulative potential placements relative to current supply flocks 7-18 months earlier ¹	
	2010	2011		2011	2012
	(1,000 chicks)	(1,000 chicks)	(percent)	(1,000 chicks)	(1,000 chicks)
January	227	220	97	3,292	2,920
February	296	244	82	3,168	2,936
March	260	253	97	3,130	2,994
April	232	287	124	3,161	2,995
May	230	196	85	3,054	3,091
June	318	302	95	3,027	
July	218	234	107	2,981	
August	253	311	123	2,974	
September	251	252	100	2,922	
October	170	266	156	2,915	
November	263			2,970	
December	263			2,936	
Total	2,981				

¹ For October 2011, includes breeder pullet chicks hatched April 2010 through March 2011. The 7-18 months represent the first laying cycle. Molting and additional laying cycles will increase the cumulative potential placements.

Broiler-Type Eggs in Incubators – Regions and United States: November 1, 2010 and 2011

[See regional listing on page 19]

Region	2010	2011	2011 as percent of 2010
	(1,000 eggs)	(1,000 eggs)	(percent)
North Atlantic	11,788	11,956	101
East North Central	11,460	11,606	101
West North Central	27,166	26,319	97
South Atlantic	230,615	220,575	96
South Central	316,770	283,011	89
West	21,898	21,946	100
United States	619,697	575,413	93

Broiler-Type Chicks Hatched – States and United States: October 2010 and 2011

State	During October			January-October		
	2010	2011	2011 as percent of 2010	2010	2011	2011 as percent of 2010
	(1,000 chicks)	(1,000 chicks)	(percent)	(1,000 chicks)	(1,000 chicks)	(percent)
Alabama	108,062	99,703	92	1,093,392	1,056,891	97
Arkansas	87,785	72,260	82	874,918	817,114	93
Delaware	14,598	11,117	76	133,723	126,875	95
Florida	4,674	4,723	101	48,051	48,028	100
Georgia	115,939	113,372	98	1,148,801	1,185,289	103
Kentucky	28,124	26,387	94	282,624	278,290	98
Louisiana	12,349	12,028	97	124,487	122,160	98
Maryland	26,687	26,054	98	297,575	274,677	92
Mississippi	67,086	64,139	96	698,614	688,563	99
Missouri	29,271	28,178	96	290,418	285,098	98
North Carolina	69,676	68,184	98	696,070	716,308	103
Oklahoma	25,256	23,937	95	249,011	246,900	99
Pennsylvania	13,449	13,117	98	133,644	138,601	104
South Carolina	20,156	19,142	95	204,172	191,159	94
Texas	57,042	50,782	89	571,139	543,319	95
Virginia	22,789	20,895	92	230,510	222,835	97
California, Tennessee, and West Virginia	40,405	38,726	96	416,332	409,216	98
19 States ¹	743,348	692,744	93	7,493,481	7,351,323	98
Other States ²	24,746	24,610	99	256,061	256,905	100
United States	768,094	717,354	93	7,749,542	7,608,228	98

¹ States in the weekly hatchery production estimating program.

² Not published separately to avoid disclosing data for individual operations.

Broiler-Type Chicks Hatched by Month – United States: 2010-2011

[Blank data cells indicate estimation period has not yet begun]

Month	By months			Cumulative		
	2010	2011	2011 as percent of 2010	2010	2011	2011 as percent of 2010
	(1,000 chicks)	(1,000 chicks)	(percent)	(1,000 chicks)	(1,000 chicks)	(percent)
January	775,431	781,123	101	775,431	781,123	101
February	700,050	708,724	101	1,475,481	1,489,847	101
March	787,939	793,957	101	2,263,420	2,283,804	101
April	768,296	779,859	102	3,031,716	3,063,663	101
May	799,068	806,574	101	3,830,784	3,870,237	101
June	787,703	768,173	98	4,618,487	4,638,410	100
July	801,716	770,368	96	5,420,203	5,408,778	100
August	798,751	760,882	95	6,218,954	6,169,660	99
September	762,494	721,214	95	6,981,448	6,890,874	99
October	768,094	717,354	93	7,749,542	7,608,228	98
November	741,093			8,490,635		
December	786,440			9,277,075		

Intended Placements of Broiler-Type Pullet Chicks for Hatchery Supply Flocks by Month and Total: 2010-2011

[Blank data cells indicate estimation period has not yet begun]

Month	Pullet chicks hatched		2011 as percent of 2010	Cumulative potential placements relative to current supply flocks 7-15 months earlier ¹	
	2010 (1,000 chicks)	2011 (1,000 chicks)		2011 (1,000 chicks)	2012 (1,000 chicks)
United States placements					
January	6,637	6,989	105	62,996	64,366
February	7,021	7,107	101	63,283	63,934
March	6,673	7,058	106	63,250	63,578
April	6,825	7,044	103	63,751	63,464
May	8,351	7,721	92	63,990	62,764
June	7,128	7,211	101	64,558	
July	6,675	6,444	97	64,656	
August	7,313	7,233	99	64,820	
September	7,128	6,657	93	63,576	
October	6,876	6,289	91	63,506	
November	7,589			63,875	
December	6,771			64,283	
Annual total	84,987				
Total placements ²					
January	8,626	8,548	99		
February	9,151	8,782	96		
March	9,033	9,023	100		
April	8,210	8,944	109		
May	10,338	9,612	93		
June	9,055	9,225	102		
July	8,520	8,131	95		
August	9,009	8,700	97		
September	9,087	8,546	94		
October	8,553	7,938	93		
November	9,314				
December	8,596				
Annual total	107,492				

¹ For October 2011, includes breeder pullet chicks hatched July 2010 through March 2011.

² United States production of intended placements worldwide.

Statistical Methodology

Survey Procedures: Primary data for the *Chickens and Eggs* report are from weekly and/or monthly questionnaires sent to producers. An attempt is made to collect information for layer and egg estimates from each known contractor and independent producer who has at least 30,000 table egg layers, flocks of hatchery supply layers, or pullet only operations with at least 500 pullets. Coverage for operations with less than 30,000 table egg layers are estimated each month based on data reported in December. Approximately 650 contractors, independent egg producers, and pullet only operations are contacted each month. All known hatcheries, approximately 300, are contacted for information on a weekly and/or monthly basis.

Estimating Procedures: Sound statistical methodology is employed to derive estimates from the reported data. All data are analyzed for unusual values. Data from each operation are compared to their own past operating profile and to trends from similar operations. Data for missing operations are estimated based on similar operations or historical data. NASS field offices prepare these estimates by using a combination of survey indications and historic trends. Individual State estimates are reviewed by the Agricultural Statistics Board for reasonableness. Individual hatchery data are summed to State, regional, and United States totals.

For chicken hatcheries, chicks hatched consist of all chicks of domesticated breeds including males and chicks destined for hatchery supply flocks and research purposes. Eggs set are eggs in incubators for the purpose of hatching. The relationship of egg-type chicks hatched to chicken inventory and poultry marketings are carefully monitored. The disposition of egg-type chicks hatched prior to placement into the laying flock can vary significantly, which can make comparisons to changes in layer inventory inconsistent over time. Broiler chicks placed are specifically placed on feed for meat production. Intended placement data reported by leading breeders include pullet chicks expected from eggs sold the preceding month. The breeders in this report account for a large percentage of replacement pullets for hatchery supply flocks. Production of replacement pullets by these breeders indicates the number of pullets available to hatchery supply layer flocks several months before the pullets will actually move into the laying flocks. "Hatchery Supply Flocks" include all generations of layers which could lay eggs to supply a hatchery. This includes the generations of parents, grandparents, great-grandparents, pedigree, etc. Also included are research flocks, vaccine flocks, and specific pathogen-free flocks. The broiler cumulative potential placements are a moving total of the intended placements 7-15 months earlier. The egg-type cumulative potential placements of 7-18 months earlier represent the first laying cycle. Molting and additional laying cycles will increase the cumulative potential placements of egg-type hatching flocks.

Revision Policy: The previous month's estimates are subject to revision if late reports or corrected data indicates a different level. Additionally, revisions after the monthly report will be made at the end of the marketing year and published in the annual reports of *Chickens and Eggs Summary* and *Hatchery Production Summary*. Estimates will also be reviewed for chickens and eggs after data from the 5-year Census of Agriculture are available. No revisions will be made after that date.

Reliability: Estimates are based on a census of all known contractors and independent producers who have at least 30,000 table egg layers, flocks of hatchery supply layers, pullet only operations with at least 500 pullets, or operating hatcheries and therefore, have no sampling error. However, estimates are subject to errors such as omission, duplication, and mistakes in reporting, recording, and processing the data. While these errors cannot be measured directly, they are minimized through strict quality controls in the data collection process and a careful review of all reported data for consistency and reasonableness.

To assist in evaluating the reliability of the estimates in this report, the "Root Mean Square Error" is shown for selected items in the following table. The "Root Mean Square Error" is a statistical measure based on past performance and is computed using the differences between first and final estimates. The "Root Mean Square Error" for all layers over the past 24 months is 0.3 percent. This means that chances are 2 out of 3 that the final estimate will not be above or below the current estimate of 336 million layers by more than 0.3 percent. Chances are 9 out of 10 that the difference will not exceed 0.6 percent.

Reliability of Layer and Egg Estimates

[Based on data for the past twenty-four months]

Item	Root mean square error	90 percent confidence level	Difference between first and latest estimate				
			Average	Smallest	Largest	Months	
						Below latest	Above latest
All layers	(percent) 0.3	(percent) 0.6	(1,000) 900	(1,000) 26	(1,000) 2,021	(number) 20	(number) 4
Eggs	0.3	0.5	(million) 19	(million) 1	(million) 45	21	3

Regional Listing

- North Atlantic:** Connecticut, Maine, Massachusetts, New Hampshire, New Jersey, New York, Pennsylvania, Rhode Island, Vermont.
- East North Central:** Illinois, Indiana, Michigan, Ohio, Wisconsin.
- West North Central:** Iowa, Kansas, Minnesota, Missouri, Nebraska, North Dakota, South Dakota.
- South Atlantic:** Delaware, Florida, Georgia, Maryland, North Carolina, South Carolina, Virginia, West Virginia.
- South Central:** Alabama, Arkansas, Kentucky, Louisiana, Mississippi, Oklahoma, Tennessee, Texas.
- West:** Alaska, Arizona, California, Colorado, Hawaii, Idaho, Montana, New Mexico, Nevada, Oregon, Utah, Washington, Wyoming.

Terms and Definitions of Chickens and Eggs Estimates

All Layers includes both table egg and hatching egg flocks regardless of size.

Intended Placements are reported by leading breeders. Coverage may not be 100 percent. Includes expected pullet chicks from eggs sold during the preceding month at the rate of 125 pullet chicks per case of 30 dozen eggs.

Information Contacts

Listed below are the commodity specialists in the Livestock Branch of the National Agricultural Statistics Service to contact for additional information. E-mail inquiries may be sent to nass@nass.usda.gov

- Dan Kerestes, Chief, Livestock Branch (202) 720-3570
- Bruce Boess, Head, Poultry and Specialty Commodities Section (202) 720-4447
- Cody Brokmeyer – Poultry Slaughter, Turkey Hatchery, Turkeys Raised (202) 690-3237
- David Colwell – Cold Storage (202) 720-8784
- Kim Linonis – Layers, Eggs (202) 690-8632
- Miste Salmon – Broiler Hatchery, Chicken Hatchery, Egg Products..... (202) 720-3244

Access to NASS Reports

For your convenience, you may access NASS reports and products the following ways:

- All reports are available electronically, at no cost, on the NASS web site: <http://www.nass.usda.gov>
- Both national and state specific reports are available via a free e-mail subscription. To set-up this free subscription, visit <http://www.nass.usda.gov> and in the “Receive NASS Updates” box under “Receive reports by Email,” click on “National” or “State” to select the reports you would like to receive.
- Printed reports may be purchased from the National Technical Information Service (NTIS) by calling toll-free (800) 999-6779, or (703) 605-6220 if calling from outside the United States or Canada. Accepted methods of payment are Visa, MasterCard, check, or money order.

For more information on NASS surveys and reports, call the NASS Agricultural Statistics Hotline at (800) 727-9540, 7:30 a.m. to 4:00 p.m. ET, or e-mail: nass@nass.usda.gov.

The United States Department of Agriculture (USDA) prohibits discrimination in all its programs and activities on the basis of race, color, national origin, age, disability, and where applicable, sex, marital status, familial status, parental status, religion, sexual orientation, political beliefs, genetic information, reprisal, or because all or a part of an individual's income is derived from any public assistance program. (Not all prohibited bases apply to all programs.) Persons with disabilities who require alternative means for communication of program information (Braille, large print, audiotape, etc.) should contact USDA's TARGET Center at (202) 720-2600 (voice and TDD).

To file a complaint of discrimination, write to USDA, Assistant Secretary for Civil Rights, Office of the Assistant Secretary for Civil Rights, 1400 Independence Avenue, S.W., Stop 9410, Washington, DC 20250-9410, or call toll-free at (866) 632-9992 (English) or (800) 877-8339 (TDD) or (866) 377-8642 (English Federal-relay) or (800) 845-6136 (Spanish Federal-relay). USDA is an equal opportunity provider and employer.