



# Chickens and Eggs

ISSN: 1948-9064

---

Released December 22, 2011, by the National Agricultural Statistics Service (NASS), Agricultural Statistics Board, United States Department of Agriculture (USDA).

## November Egg Production Up 1 Percent

United States egg production totaled 7.61 billion during November 2011, up 1 percent from last year. Production included 6.62 billion table eggs, and 999 million hatching eggs, of which 932 million were broiler-type and 67 million were egg-type. The total number of layers during November 2011 averaged 338 million, down slightly from last year. November egg production per 100 layers was 2,253 eggs, up 1 percent from November 2010.

All layers in the United States on December 1, 2011 totaled 338 million, down 1 percent from last year. The 338 million layers consisted of 286 million layers producing table or market type eggs, 50.1 million layers producing broiler-type hatching eggs, and 2.78 million layers producing egg-type hatching eggs. Rate of lay per day on December 1, 2011, averaged 75.4 eggs per 100 layers, up 1 percent from December 1, 2010.

## Egg-Type Chicks Hatched Down 3 Percent

Egg-type chicks hatched during November 2011 totaled 37.5 million, down 3 percent from November 2010. Eggs in incubators totaled 40.1 million on December 1, 2011, up 6 percent from a year ago.

Domestic placements of egg-type pullet chicks for future hatchery supply flocks by leading breeders totaled 218 thousand during November 2011, down 17 percent from November 2010.

## Broiler-Type Chicks Hatched Down 5 Percent

Broiler-type chicks hatched during November 2011 totaled 704 million, down 5 percent from November 2010. Eggs in incubators totaled 609 million on December 1, 2011, down 5 percent from a year earlier.

Leading breeders placed 6.89 million broiler-type pullet chicks for future domestic hatchery supply flocks during November 2011, down 9 percent from November 2010.

**This page intentionally left blank.**

## Contents

Average Number of All Layers on Hand During the Month – United States: 2010-2011.....	4
Egg Production During the Month by Type – United States: 2010-2011 .....	4
Average Number of Layers During the Month – United States.....	5
All Egg Production During the Month – United States .....	5
Layers on Hand and Eggs Produced by Type and Forced Molt – United States: October-November 2010 and 2011 .....	6
Layers on Hand and Eggs Produced by Type and Forced Molt – United States: November-December 2010 and 2011 .....	7
Layers on Hand and Eggs Produced – States and United States: During October 2010 and 2011 .....	8
Layers on Hand and Eggs Produced – States and United States: During November 2010 and 2011.....	9
Egg Production by Type – States and United States: October 2010 and 2011 .....	10
Egg Production by Type – States and United States: November 2010 and 2011 .....	11
Forced Molt as Percent of All Layers by Month – United States: 2010-2011 .....	12
Forced Molt as Percent of All Layers – States and United States: December 1, 2010 and 2011 .....	12
Hatchery Production – United States: 2010 and 2011 .....	13
Egg-Type Eggs in Incubators – Regions and United States: December 1, 2010 and 2011 .....	14
Egg-Type Chicks Hatched by Month – United States: 2010-2011 .....	14
Intended Placements of Egg-Type Pullet Chicks for Hatchery Supply Flocks by Month – United States: 2010-2011 .....	15
Broiler-Type Eggs in Incubators – Regions and United States: December 1, 2010 and 2011 .....	15
Broiler-Type Chicks Hatched – States and United States: November 2010 and 2011 .....	16
Broiler-Type Chicks Hatched by Month – United States: 2010-2011 .....	16
Intended Placements of Broiler-Type Pullet Chicks for Hatchery Supply Flocks by Month and Total: 2010-2011 .....	17
Statistical Methodology .....	18
Regional Listing .....	19
Terms and Definitions of Chickens and Eggs Estimates .....	19
Information Contacts .....	19

## Average Number of All Layers on Hand During the Month – United States: 2010-2011

Month	2010		2011	
	(1,000 layers)		(1,000 layers)	
December <sup>1</sup> .....		340,936		342,661
January .....		340,596		341,701
February .....		340,486		339,338
March .....		342,098		340,461
April .....		341,318		340,688
May .....		339,344		337,919
June .....		339,750		336,466
July .....		339,929		336,136
August .....		340,084		336,022
September .....		338,739		335,727
October .....		336,804		336,204
November .....		339,447		337,885

<sup>1</sup> December preceding year.

## Egg Production During the Month by Type – United States: 2010-2011

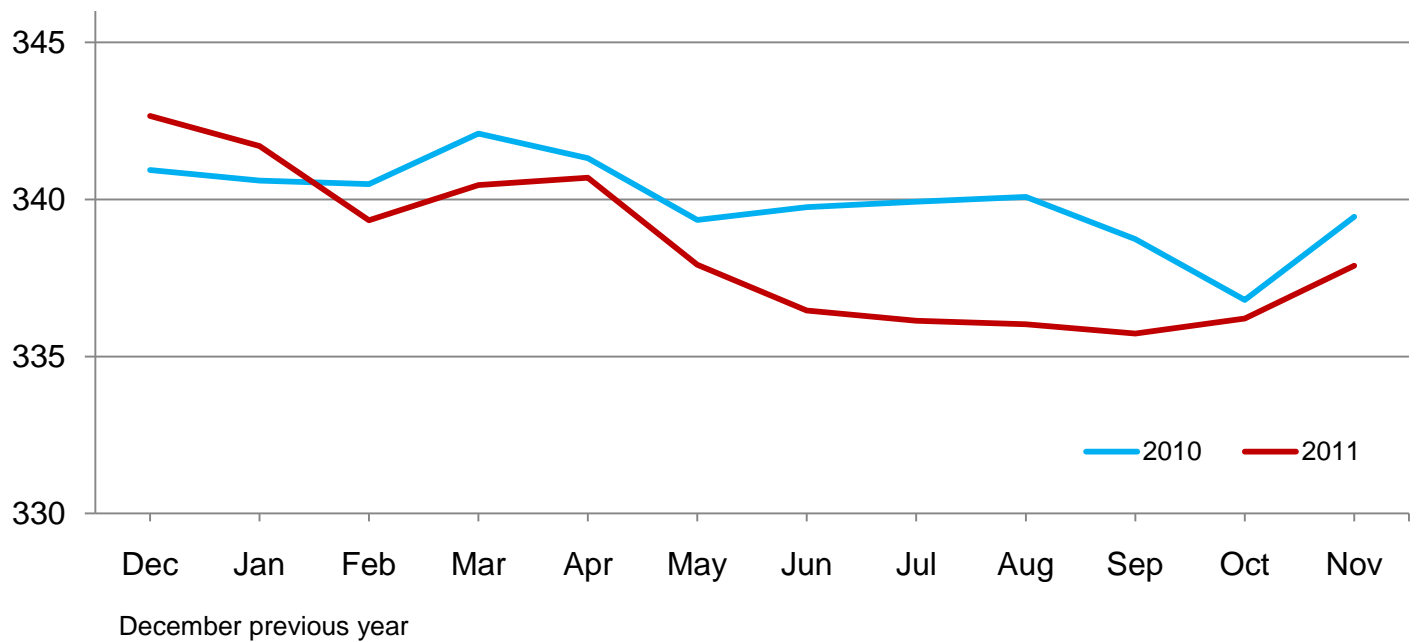
[Totals may not add due to rounding]

Month	Total eggs		Table eggs		Hatching eggs	
	2010	2011	2010	2011	2010	2011
	(million eggs)	(million eggs)	(million eggs)	(million eggs)	(million eggs)	(million eggs)
December <sup>1</sup> .....	7,853	7,920	6,779	6,850	1,074	1,070
January .....	7,724	7,821	6,637	6,739	1,087	1,083
February .....	6,935	7,006	5,950	6,029	985	976
March .....	7,839	7,836	6,740	6,754	1,098	1,083
April .....	7,578	7,617	6,503	6,555	1,075	1,062
May .....	7,716	7,777	6,607	6,671	1,109	1,107
June .....	7,484	7,505	6,415	6,438	1,069	1,068
July .....	7,719	7,740	6,610	6,656	1,109	1,085
August .....	7,765	7,734	6,669	6,671	1,096	1,064
September .....	7,514	7,510	6,464	6,494	1,050	1,017
October .....	7,698	7,790	6,618	6,753	1,080	1,038
November .....	7,573	7,614	6,538	6,615	1,036	999
During year .....	91,398	91,870	78,530	79,225	12,868	12,652

<sup>1</sup> December preceding year.

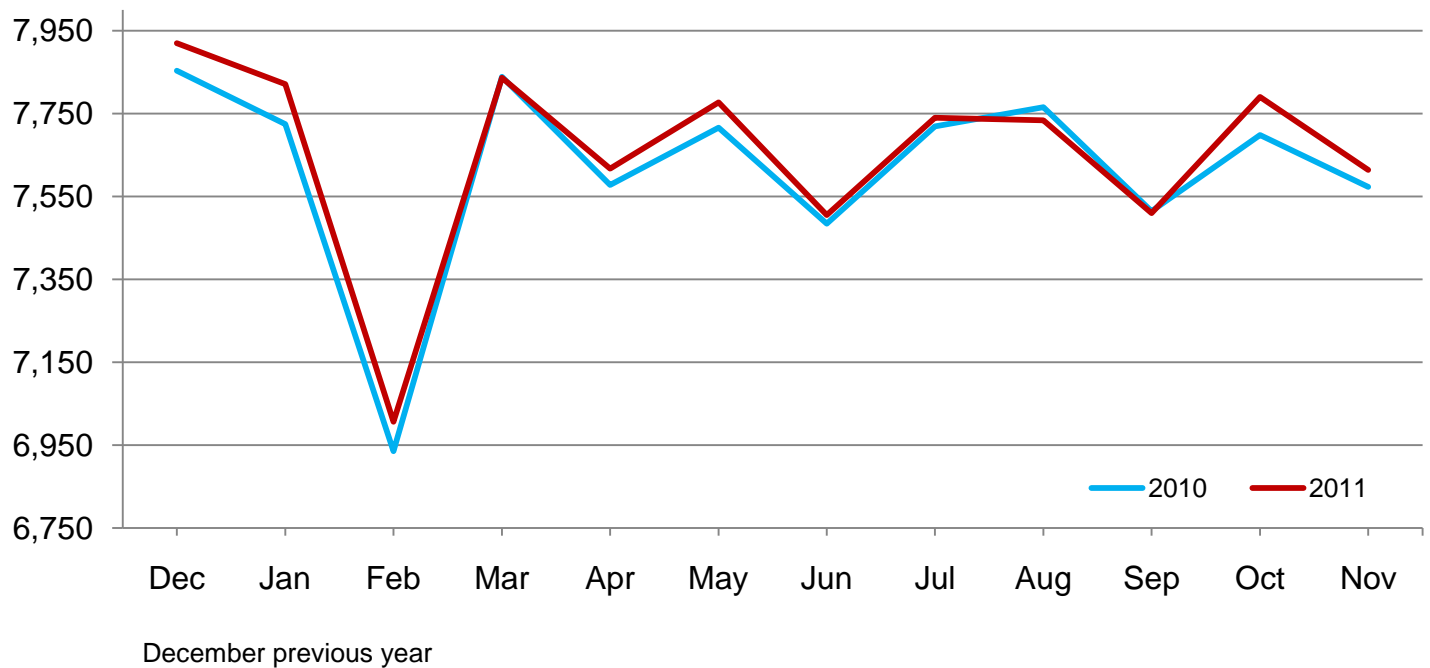
## Average Layers During the Month – United States

Million layers



## All Egg Production During the Month – United States

Million eggs



**Layers on Hand and Eggs Produced by Type and Forced Molt – United States:  
October-November 2010 and 2011**

[Totals may not add due to rounding]

Item	2010	2011	2011 as percent of 2010
<b>Layers during October</b>			
All layers ..... 1,000	336,804	336,204	100
Table egg type ..... 1,000	279,977	282,878	101
Hatching egg type ..... 1,000	56,827	53,326	94
Broiler-type hatching ..... 1,000	53,895	50,368	93
Egg-type hatching ..... 1,000	2,932	2,958	101
<b>Eggs per 100 layers during October</b>			
All layers ..... number	2,286	2,317	101
Table egg type ..... number	2,364	2,387	101
Hatching egg type ..... number	1,901	1,947	102
Broiler-type hatching ..... number	1,872	1,922	103
Egg-type hatching ..... number	2,422	2,366	98
<b>Eggs produced during October</b>			
All layers ..... million	7,698	7,790	101
Table egg type ..... million	6,618	6,753	102
Hatching egg type ..... million	1,080	1,038	96
Broiler-type hatching ..... million	1,009	968	96
Egg-type hatching ..... million	71	70	99
<b>Layers on November 1</b>			
All layers ..... 1,000	337,300	337,307	100
Table egg type ..... 1,000	280,189	284,260	101
Hatching egg type ..... 1,000	57,111	53,047	93
Broiler-type hatching ..... 1,000	54,177	50,103	92
Egg-type hatching ..... 1,000	2,934	2,944	100
<b>Eggs per 100 layers on November 1</b>			
All layers ..... number	73.8	74.7	101
Table egg type ..... number	76.4	77.0	101
Hatching egg type ..... number	60.9	62.5	103
Broiler-type hatching ..... number	60.1	61.8	103
Egg-type hatching ..... number	76.0	74.9	99
<b>Forced molt layers on November 1</b>			
Being molted ..... percent	2.7	2.5	93
Molt completed ..... percent	22.5	21.2	94
Layers sold for slaughter during October ..... 1,000	11,473	14,371	125
Layers rendered, died, destroyed, composted or disappeared for any reason during October ..... 1,000	9,234	5,940	64
Pullets on November 1 ..... 1,000	104,815	102,606	98
Pullets added during October <sup>1</sup> ..... 1,000	22,399	21,145	94

<sup>1</sup> Pullet chicks less than 3 days old added to pullet flocks.

## Layers on Hand and Eggs Produced by Type and Forced Molt – United States: November-December 2010 and 2011

[Totals may not add due to rounding]

Item	2010	2011	2011 as percent of 2010
<b>Layers during November</b>			
All layers ..... 1,000	339,447	337,885	100
Table egg type ..... 1,000	282,656	284,901	101
Hatching egg type ..... 1,000	56,791	52,984	93
Broiler-type hatching ..... 1,000	53,956	50,121	93
Egg-type hatching ..... 1,000	2,835	2,863	101
<b>Eggs per 100 layers during November</b>			
All layers ..... number	2,231	2,253	101
Table egg type ..... number	2,313	2,322	100
Hatching egg type ..... number	1,824	1,885	103
Broiler-type hatching ..... number	1,800	1,860	103
Egg-type hatching ..... number	2,293	2,340	102
<b>Eggs produced during November</b>			
All layers ..... million	7,573	7,614	101
Table egg type ..... million	6,538	6,615	101
Hatching egg type ..... million	1,036	999	96
Broiler-type hatching ..... million	971	932	96
Egg-type hatching ..... million	65	67	103
<b>Layers on December 1</b>			
All layers ..... 1,000	341,551	338,427	99
Table egg type ..... 1,000	285,099	285,527	100
Hatching egg type ..... 1,000	56,452	52,900	94
Broiler-type hatching ..... 1,000	53,722	50,124	93
Egg-type hatching ..... 1,000	2,730	2,776	102
<b>Eggs per 100 layers on December 1</b>			
All layers ..... number	74.9	75.4	101
Table egg type ..... number	77.7	77.7	100
Hatching egg type ..... number	60.6	62.8	104
Broiler-type hatching ..... number	59.9	61.9	103
Egg-type hatching ..... number	75.2	79.5	106
<b>Forced molt layers on December 1</b>			
Being molted ..... percent	1.8	1.7	94
Molt completed ..... percent	22.5	20.9	93
Layers sold for slaughter during November ..... 1,000	11,515	12,950	112
Layers rendered, died, destroyed, composted or disappeared for any reason during November ..... 1,000	6,556	7,016	107
Pullets on December 1 ..... 1,000	104,665	101,516	97
Pullets added during November <sup>1</sup> ..... 1,000	22,652	20,924	92

<sup>1</sup> Pullet chicks less than 3 days old added to pullet flocks.

## Layers on Hand and Eggs Produced – States and United States: During October 2010 and 2011

State	Table egg layers in flocks 30,000 and above		All layers		Eggs per 100 for all layers	
	2010	2011	2010	2011	2010	2011
	(1,000 layers)	(1,000 layers)	(1,000 layers)	(1,000 layers)	(eggs)	(eggs)
Alabama .....	1,370	1,417	9,498	8,974	1,948	1,961
Arkansas .....	3,271	3,408	12,101	11,200	2,025	2,063
California .....	19,278	19,660	19,586	19,953	2,364	2,351
Colorado .....	3,177	4,265	3,586	4,718	2,538	2,374
Connecticut .....	2,219	2,108	2,287	2,175	2,405	2,391
Florida .....	8,973	9,320	9,354	9,681	2,320	2,407
Georgia .....	8,339	7,871	17,027	16,410	2,214	2,230
Hawaii <sup>1</sup> .....	302	(NA)	347	(NA)	1,671	(NA)
Illinois .....	4,428	4,417	4,635	4,623	2,309	2,444
Indiana .....	22,277	21,871	23,002	22,559	2,322	2,332
Iowa .....	52,061	52,301	52,947	53,235	2,276	2,309
Maine .....	3,545	3,556	3,600	3,611	2,417	2,326
Maryland .....	1,994	1,782	2,145	1,924	2,145	2,339
Michigan .....	9,756	10,389	9,906	10,540	2,524	2,419
Minnesota .....	10,031	9,640	10,551	10,137	2,379	2,387
Mississippi .....	1,400	1,473	5,970	5,646	2,027	2,108
Missouri .....	5,870	5,684	7,142	6,902	2,310	2,420
Nebraska .....	9,447	8,999	9,497	9,049	2,506	2,486
New York .....	3,758	4,132	3,983	4,363	2,511	2,498
North Carolina .....	5,825	5,665	13,060	12,529	2,060	2,123
Ohio .....	27,594	27,330	28,061	27,820	2,302	2,344
Oregon .....	2,198	2,181	2,331	2,337	2,488	2,353
Pennsylvania .....	22,686	23,847	23,800	25,029	2,471	2,453
South Carolina .....	3,030	2,964	4,352	4,053	2,229	2,295
South Dakota .....	2,356	2,359	2,396	2,399	2,295	2,626
Texas .....	13,746	14,289	18,018	18,190	2,314	2,331
Utah .....	3,370	3,505	3,400	3,535	2,353	2,433
Virginia .....	1,243	1,284	2,992	2,994	2,139	2,238
Washington .....	6,340	6,783	6,455	6,898	2,153	2,464
Wisconsin .....	4,195	4,168	4,754	4,733	2,272	2,387
Other States <sup>2</sup> .....	11,406	11,700	20,021	19,987	2,168	2,171
United States .....	275,485	278,368	336,804	336,204	2,286	2,317

(NA) Not available.

<sup>1</sup> Included in Other States in 2011.

<sup>2</sup> Includes data for States not published in this table.



## Layers on Hand and Eggs Produced – States and United States: During November 2010 and 2011

State	Table egg layers in flocks 30,000 and above		All layers		Eggs per 100 for all layers	
	2010	2011	2010	2011	2010	2011
	(1,000 layers)	(1,000 layers)	(1,000 layers)	(1,000 layers)	(eggs)	(eggs)
Alabama .....	1,368	1,468	9,469	9,006	1,901	1,921
Arkansas .....	3,356	3,524	12,301	11,385	1,959	2,038
California .....	19,241	19,919	19,550	20,213	2,292	2,291
Colorado .....	3,255	4,268	3,659	4,712	2,350	2,377
Connecticut .....	2,248	2,167	2,315	2,233	2,289	2,284
Florida .....	9,263	9,599	9,652	9,938	2,300	2,355
Georgia .....	8,529	8,241	17,101	16,536	2,175	2,129
Hawaii <sup>1</sup> .....	311	(NA)	346	(NA)	1,705	(NA)
Illinois .....	4,347	4,348	4,557	4,554	2,260	2,350
Indiana .....	22,387	22,120	23,101	22,778	2,277	2,243
Iowa .....	51,745	52,256	52,632	53,193	2,210	2,241
Maine .....	3,524	3,547	3,579	3,602	2,347	2,249
Maryland .....	2,065	1,892	2,215	2,029	2,167	2,366
Michigan .....	10,000	10,574	10,150	10,724	2,424	2,378
Minnesota .....	10,071	9,554	10,556	10,046	2,311	2,289
Mississippi .....	1,433	1,519	5,969	5,593	1,994	2,038
Missouri .....	6,038	5,580	7,308	6,834	2,217	2,210
Nebraska .....	9,367	9,013	9,417	9,063	2,421	2,450
New York .....	4,000	4,183	4,226	4,410	2,437	2,426
North Carolina .....	5,858	5,753	13,208	12,665	2,029	1,982
Ohio .....	27,853	27,510	28,318	27,998	2,267	2,304
Oregon .....	2,275	2,219	2,399	2,361	2,376	2,457
Pennsylvania .....	23,589	23,776	24,690	24,996	2,406	2,396
South Carolina .....	3,033	3,155	4,312	4,221	2,203	2,180
South Dakota .....	2,349	2,391	2,389	2,431	2,344	2,427
Texas .....	14,044	14,349	18,355	18,221	2,277	2,343
Utah .....	3,369	3,479	3,399	3,509	2,354	2,394
Virginia .....	1,284	1,217	3,030	2,881	2,013	2,187
Washington .....	6,365	6,733	6,480	6,848	2,114	2,366
Wisconsin .....	4,192	4,346	4,720	4,905	2,309	2,345
Other States <sup>2</sup> .....	11,395	11,691	20,044	20,000	2,105	2,120
United States .....	278,154	280,391	339,447	337,885	2,231	2,253

(NA) Not available.

<sup>1</sup> Included in Other States in 2011.

<sup>2</sup> Includes data for States not published in this table.

## Egg Production by Type – States and United States: October 2010 and 2011

[Totals may not add due to rounding. Data by type of flock not shown for some States to avoid disclosing individual operations, data included in United States totals]

State	Total production		Table eggs		Hatching eggs	
	2010	2011	2010	2011	2010	2011
	(million eggs)	(million eggs)	(million eggs)	(million eggs)	(million eggs)	(million eggs)
Alabama .....	185	176	35	34	150	142
Arkansas .....	245	231	81	80	164	151
California .....	463	469	(D)	(D)	(D)	(D)
Colorado .....	91	112	(D)	(D)	(D)	(D)
Connecticut .....	55	52	(D)	(D)	(D)	(D)
Florida .....	217	233	211	227	6	6
Georgia .....	377	366	203	196	174	170
Hawaii <sup>1</sup> .....	5.8	(NA)	5.8	(NA)	-	(NA)
Illinois .....	107	113	104	110	3	3
Indiana .....	534	526	522	514	12	12
Iowa .....	1,205	1,229	1,191	1,213	14	16
Maine .....	87	84	(D)	(D)	(D)	(D)
Maryland .....	46	45	44	43	2	2
Michigan .....	250	255	(D)	(D)	(D)	(D)
Minnesota .....	251	242	242	233	9	9
Mississippi .....	121	119	35	36	86	83
Missouri .....	165	167	(D)	(D)	(D)	(D)
Nebraska .....	238	225	238	225	-	-
New York .....	100	109	(D)	(D)	(D)	(D)
North Carolina .....	269	266	141	140	128	126
Ohio .....	646	652	(D)	(D)	(D)	(D)
Oregon .....	58	55	56	53	2	2
Pennsylvania .....	588	614	569	595	19	19
South Carolina .....	97	93	74	73	23	20
South Dakota .....	55	63	55	63	-	-
Texas .....	417	424	(D)	(D)	(D)	(D)
Utah .....	80	86	80	86	-	-
Virginia .....	64	67	31	34	33	33
Washington .....	139	170	(D)	(D)	(D)	(D)
Wisconsin .....	108	113	(D)	(D)	(D)	(D)
Other States <sup>2</sup> .....	434	434	298	305	136	130
United States .....	7,698	7,790	6,618	6,753	1,080	1,038

- Represents zero.

(D) Withheld to avoid disclosing data for individual operations.

(NA) Not available.

<sup>1</sup> Included in Other States in 2011.

<sup>2</sup> Includes data for States not published in this table.

## Egg Production by Type – States and United States: November 2010 and 2011

[Totals may not add due to rounding. Data by type of flock not shown for some States to avoid disclosing individual operations, data included in United States totals]

State	Total production		Table eggs		Hatching eggs	
	2010	2011	2010	2011	2010	2011
	(million eggs)	(million eggs)	(million eggs)	(million eggs)	(million eggs)	(million eggs)
Alabama .....	180	173	34	35	146	138
Arkansas .....	241	232	81	83	160	149
California .....	448	463	(D)	(D)	(D)	(D)
Colorado .....	86	112	(D)	(D)	(D)	(D)
Connecticut .....	53	51	(D)	(D)	(D)	(D)
Florida .....	222	234	216	229	6	5
Georgia .....	372	352	208	193	164	159
Hawaii <sup>1</sup> .....	5.9	(NA)	5.9	(NA)	-	(NA)
Illinois .....	103	107	100	104	3	3
Indiana .....	526	511	515	500	11	11
Iowa .....	1,163	1,192	1,150	1,176	13	16
Maine .....	84	81	(D)	(D)	(D)	(D)
Maryland .....	48	48	46	46	2	2
Michigan .....	246	255	(D)	(D)	(D)	(D)
Minnesota .....	244	230	236	222	8	8
Mississippi .....	119	114	36	36	83	78
Missouri .....	162	151	(D)	(D)	(D)	(D)
Nebraska .....	228	222	228	222	-	-
New York .....	103	107	(D)	(D)	(D)	(D)
North Carolina .....	268	251	141	129	127	122
Ohio .....	642	645	(D)	(D)	(D)	(D)
Oregon .....	57	58	55	56	2	2
Pennsylvania .....	594	599	577	579	17	20
South Carolina .....	95	92	73	73	22	19
South Dakota .....	56	59	56	59	-	-
Texas .....	418	427	(D)	(D)	(D)	(D)
Utah .....	80	84	80	84	-	-
Virginia .....	61	63	30	32	31	31
Washington .....	137	162	(D)	(D)	(D)	(D)
Wisconsin .....	109	115	(D)	(D)	(D)	(D)
Other States <sup>2</sup> .....	422	424	292	298	131	127
United States .....	7,573	7,614	6,538	6,615	1,036	999

- Represents zero.

(D) Withheld to avoid disclosing data for individual operations.

(NA) Not available.

<sup>1</sup> Included in Other States in 2011.

<sup>2</sup> Includes data for States not published in this table.

## Forced Molt as Percent of All Layers by Month – United States: 2010-2011

[As of the first of the month]

Month	Being molted		Molt completed	
	2010 (percent)	2011 (percent)	2010 (percent)	2011 (percent)
January .....	2.7	2.8	20.8	21.3
February .....	3.6	3.6	20.3	20.3
March .....	3.2	3.1	21.2	20.2
April .....	2.8	2.6	21.3	20.0
May .....	4.2	3.0	21.5	20.0
June .....	3.3	3.8	22.7	19.4
July .....	3.3	3.5	22.5	19.5
August .....	3.4	3.6	22.6	19.3
September .....	2.6	3.3	23.0	20.0
October .....	4.4	3.9	21.7	20.0
November .....	2.7	2.5	22.5	21.2
December .....	1.8	1.7	22.5	20.9

## Forced Molt as Percent of All Layers – States and United States: December 1, 2010 and 2011

[As of the first of the month]

State	Being molted		Molt completed	
	2010 (percent)	2011 (percent)	2010 (percent)	2011 (percent)
Alabama .....	-	-	6.0	8.0
Arkansas .....	1.5	-	9.5	9.5
California .....	3.5	2.0	30.5	28.5
Colorado .....	-	-	30.0	14.0
Connecticut .....	-	-	7.5	8.5
Florida .....	0.5	3.0	42.5	39.0
Georgia .....	-	0.5	19.5	13.5
Hawaii <sup>1</sup> .....	7.5	(NA)	35.0	(NA)
Illinois .....	-	-	29.5	25.5
Indiana .....	3.5	2.0	24.5	31.0
Iowa .....	3.0	3.5	36.0	33.0
Maine .....	-	-	-	-
Maryland .....	-	-	24.0	9.0
Michigan .....	3.0	1.5	18.0	16.5
Minnesota .....	3.0	2.0	23.5	26.0
Mississippi .....	-	-	11.0	14.0
Missouri .....	2.0	-	20.5	25.0
Nebraska .....	-	1.0	2.5	2.0
New York .....	1.0	1.5	11.5	5.5
North Carolina .....	-	-	16.0	15.0
Ohio .....	2.5	2.0	20.5	11.0
Oregon .....	4.0	2.5	25.5	34.5
Pennsylvania .....	1.0	2.5	11.5	13.5
South Carolina .....	1.0	-	21.0	18.5
South Dakota .....	6.5	2.5	37.0	15.5
Texas .....	-	-	21.5	23.5
Utah .....	-	3.0	42.5	35.0
Virginia .....	-	-	16.5	17.0
Washington .....	5.5	3.0	34.5	32.0
Wisconsin .....	-	2.0	35.5	28.0
Other States <sup>2</sup> .....	1.6	1.8	15.3	15.3
United States .....	1.8	1.7	22.5	20.9

- Represents zero.

(NA) Not available.

<sup>1</sup> Included in Other States in 2011.

<sup>2</sup> Includes data for States not published in this table.

## Hatchery Production – United States: 2010 and 2011

Item	2010	2011	2011 as percent of 2010
	(1,000)	(1,000)	(percent)
<b>Egg-type</b>			
Eggs in incubators on December 1 .....	37,729	40,069	106
Chicks hatched during November .....	38,849	37,508	97
Chicks hatched January through November .....	451,453	443,343	98
Pullets hatched during November for intended placements:			
Hatchery supply flocks .....	263	218	83
Cumulative potential placements 7-18 months earlier <sup>1</sup> .....	3,340	2,970	89
<b>Broiler-type</b>			
Eggs in incubators on December 1 .....	639,122	608,538	95
Chicks hatched during November .....	741,093	704,103	95
Chicks hatched January through November .....	8,490,635	8,312,331	98
Pullets hatched during November for intended placements:			
Hatchery supply flocks .....	7,589	6,890	91
Cumulative potential placements 7-15 months earlier <sup>2</sup> .....	61,790	63,875	103

<sup>1</sup> 2011 includes pullet chicks hatched May 2010 through April 2011.

<sup>2</sup> 2011 includes pullet chicks hatched August 2010 through April 2011.

## Egg-Type Eggs in Incubators – Regions and United States: December 1, 2010 and 2011

[See regional listing on page 19]

Region	2010	2011	2011 as percent of 2010
	(1,000 eggs)	(1,000 eggs)	(percent)
North Atlantic .....	4,985	5,058	101
East North Central .....	7,676	8,886	116
West North Central .....	8,158	8,701	107
South Atlantic .....	3,848	4,604	120
South Central .....	5,339	5,426	102
West .....	7,723	7,394	96
United States .....	37,729	40,069	106

## Egg-Type Chicks Hatched by Month – United States: 2010-2011

[Blank data cells indicate estimation period has not yet begun]

Month	By months			Cumulative		
	2010	2011	2011 as percent of 2010	2010	2011	2011 as percent of 2010
	(1,000 chicks)	(1,000 chicks)	(percent)	(1,000 chicks)	(1,000 chicks)	(percent)
January .....	38,819	41,366	107	38,819	41,366	107
February .....	39,218	37,336	95	78,037	78,702	101
March .....	44,914	43,974	98	122,951	122,676	100
April .....	47,558	43,429	91	170,509	166,105	97
May .....	43,231	43,305	100	213,740	209,410	98
June .....	42,331	39,313	93	256,071	248,723	97
July .....	38,089	37,405	98	294,160	286,128	97
August .....	37,014	41,564	112	331,174	327,692	99
September .....	40,130	40,298	100	371,304	367,990	99
October .....	41,300	37,845	92	412,604	405,835	98
November .....	38,849	37,508	97	451,453	443,343	98
December .....	37,759			489,212		

## Intended Placements of Egg-Type Pullet Chicks for Hatchery Supply Flocks by Month – United States: 2010-2011

[Blank data cells indicate estimation period has not yet begun]

Month	Pullet chicks hatched		2011 as percent of 2010	Cumulative potential placements relative to current supply flocks 7-18 months earlier <sup>1</sup>	
	2010	2011		2011	2012
	(1,000 chicks)	(1,000 chicks)	(percent)	(1,000 chicks)	(1,000 chicks)
January .....	227	220	97	3,292	2,920
February .....	296	244	82	3,168	2,936
March .....	260	253	97	3,130	2,994
April .....	232	287	124	3,161	2,995
May .....	230	196	85	3,054	3,091
June .....	318	302	95	3,027	3,046
July .....	218	234	107	2,981	
August .....	253	311	123	2,974	
September .....	251	252	100	2,922	
October .....	170	266	156	2,915	
November .....	263	218	83	2,970	
December .....	263			2,936	
Total .....	2,981				

<sup>1</sup> For November 2011, includes breeder pullet chicks hatched May 2010 through April 2011. The 7-18 months represent the first laying cycle. Molting and additional laying cycles will increase the cumulative potential placements.

## Broiler-Type Eggs in Incubators – Regions and United States: December 1, 2010 and 2011

[See regional listing on page 19]

Region	2010	2011	2011 as percent of 2010
	(1,000 eggs)	(1,000 eggs)	(percent)
North Atlantic .....	12,665	12,323	97
East North Central .....	12,040	12,587	105
West North Central .....	29,677	29,043	98
South Atlantic .....	238,464	229,781	96
South Central .....	323,842	301,331	93
West .....	22,434	23,473	105
United States .....	639,122	608,538	95

## Broiler-Type Chicks Hatched – States and United States: November 2010 and 2011

State	During November			January-November		
	2010	2011	2011 as percent of 2010	2010	2011	2011 as percent of 2010
	(1,000 chicks)	(1,000 chicks)	(percent)	(1,000 chicks)	(1,000 chicks)	(percent)
Alabama .....	101,505	94,226	93	1,194,897	1,151,117	96
Arkansas .....	82,950	69,915	84	957,868	887,029	93
Delaware .....	14,144	10,654	75	147,867	137,529	93
Florida .....	4,431	4,722	107	52,482	52,750	101
Georgia .....	112,143	108,182	96	1,260,944	1,293,471	103
Kentucky .....	27,318	26,054	95	309,942	304,344	98
Louisiana .....	12,200	12,245	100	136,687	134,405	98
Maryland .....	26,051	26,530	102	323,626	301,207	93
Mississippi .....	65,592	62,960	96	764,206	751,523	98
Missouri .....	26,850	26,544	99	317,268	311,642	98
North Carolina .....	70,418	69,209	98	766,488	785,517	102
Oklahoma .....	24,780	23,251	94	273,791	270,151	99
Pennsylvania .....	12,937	13,152	102	146,581	151,753	104
South Carolina .....	19,066	18,661	98	223,238	209,820	94
Texas .....	54,702	51,007	93	625,841	594,326	95
Virginia .....	22,119	21,628	98	252,629	244,463	97
California, Tennessee, and West Virginia .....	39,336	39,446	100	455,668	448,662	98
19 States <sup>1</sup> .....	716,542	678,386	95	8,210,023	8,029,709	98
Other States <sup>2</sup> .....	24,551	25,717	105	280,612	282,622	101
United States .....	741,093	704,103	95	8,490,635	8,312,331	98

<sup>1</sup> States in the weekly hatchery production estimating program.

<sup>2</sup> Not published separately to avoid disclosing data for individual operations.

## Broiler-Type Chicks Hatched by Month – United States: 2010-2011

[Blank data cells indicate estimation period has not yet begun]

Month	By months			Cumulative		
	2010	2011	2011 as percent of 2010	2010	2011	2011 as percent of 2010
	(1,000 chicks)	(1,000 chicks)	(percent)	(1,000 chicks)	(1,000 chicks)	(percent)
January .....	775,431	781,123	101	775,431	781,123	101
February .....	700,050	708,724	101	1,475,481	1,489,847	101
March .....	787,939	793,957	101	2,263,420	2,283,804	101
April .....	768,296	779,859	102	3,031,716	3,063,663	101
May .....	799,068	806,574	101	3,830,784	3,870,237	101
June .....	787,703	768,173	98	4,618,487	4,638,410	100
July .....	801,716	770,368	96	5,420,203	5,408,778	100
August .....	798,751	760,882	95	6,218,954	6,169,660	99
September .....	762,494	721,214	95	6,981,448	6,890,874	99
October .....	768,094	717,354	93	7,749,542	7,608,228	98
November .....	741,093	704,103	95	8,490,635	8,312,331	98
December .....	786,440			9,277,075		



## Intended Placements of Broiler-Type Pullet Chicks for Hatchery Supply Flocks by Month and Total: 2010-2011

[Blank data cells indicate estimation period has not yet begun]

Month	Pullet chicks hatched		2011 as percent of 2010	Cumulative potential placements relative to current supply flocks 7-15 months earlier <sup>1</sup>	
	2010 (1,000 chicks)	2011 (1,000 chicks)		2011 (1,000 chicks)	2012 (1,000 chicks)
United States placements					
January .....	6,637	6,989	105	62,996	64,366
February .....	7,021	7,107	101	63,283	63,934
March .....	6,673	7,058	106	63,250	63,578
April .....	6,825	7,044	103	63,751	63,464
May .....	8,351	7,721	92	63,990	62,764
June .....	7,128	7,211	101	64,558	62,547
July .....	6,675	6,444	97	64,656	
August .....	7,313	7,233	99	64,820	
September .....	7,128	6,657	93	63,576	
October .....	6,876	6,289	91	63,506	
November .....	7,589	6,890	91	63,875	
December .....	6,771			64,283	
Annual total .....	84,987				
Total placements <sup>2</sup>					
January .....	8,626	8,548	99		
February .....	9,151	8,782	96		
March .....	9,033	9,023	100		
April .....	8,210	8,944	109		
May .....	10,338	9,612	93		
June .....	9,055	9,225	102		
July .....	8,520	8,131	95		
August .....	9,009	8,700	97		
September .....	9,087	8,546	94		
October .....	8,553	7,938	93		
November .....	9,314	8,489	91		
December .....	8,596				
Annual total .....	107,492				

<sup>1</sup> For November 2011, includes breeder pullet chicks hatched August 2010 through April 2011.

<sup>2</sup> United States production of intended placements worldwide.

## Statistical Methodology

**Survey Procedures:** Primary data for the *Chickens and Eggs* report are from weekly and/or monthly questionnaires sent to producers. An attempt is made to collect information for layer and egg estimates from each known contractor and independent producer who has at least 30,000 table egg layers, flocks of hatchery supply layers, or pullet only operations with at least 500 pullets. Coverage for operations with less than 30,000 table egg layers are estimated each month based on data reported in December. Approximately 650 contractors, independent egg producers, and pullet only operations are contacted each month. All known hatcheries, approximately 300, are contacted for information on a weekly and/or monthly basis.

**Estimating Procedures:** Sound statistical methodology is employed to derive estimates from the reported data. All data are analyzed for unusual values. Data from each operation are compared to their own past operating profile and to trends from similar operations. Data for missing operations are estimated based on similar operations or historical data. NASS field offices prepare these estimates by using a combination of survey indications and historic trends. Individual State estimates are reviewed by the Agricultural Statistics Board for reasonableness. Individual hatchery data are summed to State, regional, and United States totals.

For chicken hatcheries, chicks hatched consist of all chicks of domesticated breeds including males and chicks destined for hatchery supply flocks and research purposes. Eggs set are eggs in incubators for the purpose of hatching. The relationship of egg-type chicks hatched to chicken inventory and poultry marketings are carefully monitored. The disposition of egg-type chicks hatched prior to placement into the laying flock can vary significantly, which can make comparisons to changes in layer inventory inconsistent over time. Broiler chicks placed are specifically placed on feed for meat production. Intended placement data reported by leading breeders include pullet chicks expected from eggs sold the preceding month. The breeders in this report account for a large percentage of replacement pullets for hatchery supply flocks. Production of replacement pullets by these breeders indicates the number of pullets available to hatchery supply layer flocks several months before the pullets will actually move into the laying flocks. "Hatchery Supply Flocks" include all generations of layers which could lay eggs to supply a hatchery. This includes the generations of parents, grandparents, great-grandparents, pedigree, etc. Also included are research flocks, vaccine flocks, and specific pathogen-free flocks. The broiler cumulative potential placements are a moving total of the intended placements 7-15 months earlier. The egg-type cumulative potential placements of 7-18 months earlier represent the first laying cycle. Molting and additional laying cycles will increase the cumulative potential placements of egg-type hatching flocks.

**Revision Policy:** The previous month's estimates are subject to revision if late reports or corrected data indicates a different level. Additionally, revisions after the monthly report will be made at the end of the marketing year and published in the annual reports of *Chickens and Eggs Summary* and *Hatchery Production Summary*. Estimates will also be reviewed for chickens and eggs after data from the 5-year Census of Agriculture are available. No revisions will be made after that date.

**Reliability:** Estimates are based on a census of all known contractors and independent producers who have at least 30,000 table egg layers, flocks of hatchery supply layers, pullet only operations with at least 500 pullets, or operating hatcheries and therefore, have no sampling error. However, estimates are subject to errors such as omission, duplication, and mistakes in reporting, recording, and processing the data. While these errors cannot be measured directly, they are minimized through strict quality controls in the data collection process and a careful review of all reported data for consistency and reasonableness.

To assist in evaluating the reliability of the estimates in this report, the "Root Mean Square Error" is shown for selected items in the following table. The "Root Mean Square Error" is a statistical measure based on past performance and is computed using the differences between first and final estimates. The "Root Mean Square Error" for all layers over the past 24 months is 0.3 percent. This means that chances are 2 out of 3 that the final estimate will not be above or below the current estimate of 338 million layers by more than 0.3 percent. Chances are 9 out of 10 that the difference will not exceed 0.5 percent.

## Reliability of Layer and Egg Estimates

[Based on data for the past twenty-four months]

Item	Root mean square error	90 percent confidence level	Difference between first and latest estimate				
			Average	Smallest	Largest	Months	
						Below latest	Above latest
	(percent)	(percent)	(1,000)	(1,000)	(1,000)	(number)	(number)
All layers .....	0.3	0.5	877	26	2,021	20	4
Eggs .....	0.3	0.5	19	1	45	21	3

## Regional Listing

- North Atlantic:** Connecticut, Maine, Massachusetts, New Hampshire, New Jersey, New York, Pennsylvania, Rhode Island, Vermont.
- East North Central:** Illinois, Indiana, Michigan, Ohio, Wisconsin.
- West North Central:** Iowa, Kansas, Minnesota, Missouri, Nebraska, North Dakota, South Dakota.
- South Atlantic:** Delaware, Florida, Georgia, Maryland, North Carolina, South Carolina, Virginia, West Virginia.
- South Central:** Alabama, Arkansas, Kentucky, Louisiana, Mississippi, Oklahoma, Tennessee, Texas.
- West:** Alaska, Arizona, California, Colorado, Hawaii, Idaho, Montana, New Mexico, Nevada, Oregon, Utah, Washington, Wyoming.

## Terms and Definitions of Chickens and Eggs Estimates

**All Layers** includes both table egg and hatching egg flocks regardless of size.

**Intended Placements** are reported by leading breeders. Coverage may not be 100 percent. Includes expected pullet chicks from eggs sold during the preceding month at the rate of 125 pullet chicks per case of 30 dozen eggs.

## Information Contacts

Listed below are the commodity specialists in the Livestock Branch of the National Agricultural Statistics Service to contact for additional information. E-mail inquiries may be sent to [nass@nass.usda.gov](mailto:nass@nass.usda.gov)

- Dan Kerestes, Chief, Livestock Branch ..... (202) 720-3570
- Bruce Boess, Head, Poultry and Specialty Commodities Section ..... (202) 720-4447
- Cody Brokmeyer – Honey, Poultry Slaughter, Turkey Hatchery, Turkeys Raised ..... (202) 690-3237
- David Colwell – Cold Storage ..... (202) 720-8784
- Kim Linonis – Layers, Eggs ..... (202) 690-8632
- Miste Salmon – Broiler Hatchery, Chicken Hatchery, Catfish Processing, Catfish Production,  
Trout Production, Census of Aquaculture, Egg Products, Mink ..... (202) 720-3244

## Access to NASS Reports

For your convenience, you may access NASS reports and products the following ways:

- All reports are available electronically, at no cost, on the NASS web site: <http://www.nass.usda.gov>
- Both national and state specific reports are available via a free e-mail subscription. To set-up this free subscription, visit <http://www.nass.usda.gov> and in the “Receive NASS Updates” box under “Receive reports by Email,” click on “National” or “State” to select the reports you would like to receive.
- Printed reports may be purchased from the National Technical Information Service (NTIS) by calling toll-free (800) 999-6779, or (703) 605-6220 if calling from outside the United States or Canada. Accepted methods of payment are Visa, MasterCard, check, or money order.

For more information on NASS surveys and reports, call the NASS Agricultural Statistics Hotline at (800) 727-9540, 7:30 a.m. to 4:00 p.m. ET, or e-mail: [nass@nass.usda.gov](mailto:nass@nass.usda.gov).

The United States Department of Agriculture (USDA) prohibits discrimination in all its programs and activities on the basis of race, color, national origin, age, disability, and where applicable, sex, marital status, familial status, parental status, religion, sexual orientation, political beliefs, genetic information, reprisal, or because all or a part of an individual's income is derived from any public assistance program. (Not all prohibited bases apply to all programs.) Persons with disabilities who require alternative means for communication of program information (Braille, large print, audiotape, etc.) should contact USDA's TARGET Center at (202) 720-2600 (voice and TDD).

To file a complaint of discrimination, write to USDA, Assistant Secretary for Civil Rights, Office of the Assistant Secretary for Civil Rights, 1400 Independence Avenue, S.W., Stop 9410, Washington, DC 20250-9410, or call toll-free at (866) 632-9992 (English) or (800) 877-8339 (TDD) or (866) 377-8642 (English Federal-relay) or (800) 845-6136 (Spanish Federal-relay). USDA is an equal opportunity provider and employer.