



Chickens and Eggs

ISSN: 1948-9064

Released May 22, 2012, by the National Agricultural Statistics Service (NASS), Agricultural Statistics Board, United States Department of Agriculture (USDA).

April Egg Production Down 1 Percent

United States egg production totaled 7.58 billion during April 2012, down 1 percent from last year. Production included 6.54 billion table eggs, and 1.04 billion hatching eggs, of which 964 million were broiler-type and 73 million were egg-type. The total number of layers during April 2012 averaged 339 million, down slightly from last year. April egg production per 100 layers was 2,233 eggs, down slightly from April 2011.

All layers in the United States on May 1, 2012 totaled 338 million, down slightly from last year. The 338 million layers consisted of 283 million layers producing table or market type eggs, 52.8 million layers producing broiler-type hatching eggs, and 2.98 million layers producing egg-type hatching eggs. Rate of lay per day on May 1, 2012, averaged 73.6 eggs per 100 layers, down 1 percent from May 1, 2011.

Egg-Type Chicks Hatched Down 8 Percent

Egg-type chicks hatched during April 2012 totaled 39.7 million, down 8 percent from April 2011. Eggs in incubators totaled 42.0 million on May 1, 2012, up 4 percent from a year ago.

Domestic placements of egg-type pullet chicks for future hatchery supply flocks by leading breeders totaled 172 thousand during April 2012, down 40 percent from April 2011.

Broiler-Type Chicks Hatched Down 4 Percent

Broiler-type chicks hatched during April 2012 totaled 748 million, down 4 percent from April 2011. Eggs in incubators totaled 619 million on May 1, 2012, down 4 percent from a year earlier.

Leading breeders placed 6.52 million broiler-type pullet chicks for future domestic hatchery supply flocks during April 2012, down 7 percent from April 2011.

This page intentionally left blank.

Contents

Average Number of All Layers on Hand During the Month – United States: 2011-2012.....	4
Egg Production During the Month by Type – United States: 2011-2012.....	4
Average Number of Layers During the Month – United States.....	5
All Egg Production During the Month – United States	5
Layers on Hand and Eggs Produced by Type and Forced Molt – United States: March-April 2011 and 2012	6
Layers on Hand and Eggs Produced by Type and Forced Molt – United States: April-May 2011 and 2012	7
Layers on Hand and Eggs Produced – States and United States: During March 2011 and 2012	8
Layers on Hand and Eggs Produced – States and United States: During April 2011 and 2012	9
Egg Production by Type – States and United States: March 2011 and 2012.....	10
Egg Production by Type – States and United States: April 2011 and 2012.....	11
Forced Molt as Percent of All Layers by Month – United States: 2011-2012.....	12
Forced Molt as Percent of All Layers – States and United States: May 1, 2011 and 2012	12
Hatchery Production – United States: 2011 and 2012	13
Egg-Type Eggs in Incubators – Regions and United States: May 1, 2011 and 2012	14
Egg-Type Chicks Hatched by Month – United States: 2011-2012.....	14
Intended Placements of Egg-Type Pullet Chicks for Hatchery Supply Flocks by Month – United States: 2011-2012.....	15
Broiler-Type Eggs in Incubators – Regions and United States: May 1, 2011 and 2012.....	15
Broiler-Type Chicks Hatched – States and United States: April 2011 and 2012.....	16
Broiler-Type Chicks Hatched by Month – United States: 2011-2012.....	16
Intended Placements of Broiler-Type Pullet Chicks for Hatchery Supply Flocks by Month and Total: 2011-2012.....	17
Statistical Methodology	18
Regional Listing.....	19
Terms and Definitions of Chickens and Eggs Estimates	19
Information Contacts	19

Average Number of All Layers on Hand During the Month – United States: 2011-2012

[Blank data cells indicate estimation period has not yet begun]

Month	2011		2012	
	(1,000 layers)		(1,000 layers)	
December ¹		343,083		338,158
January		342,266		337,618
February		339,787		338,151
March		340,655		339,626
April		340,896		339,338
May		337,897		
June		336,411		
July		335,799		
August		335,412		
September		335,328		
October		335,884		
November		337,716		

¹ December preceding year.

Egg Production During the Month by Type – United States: 2011-2012

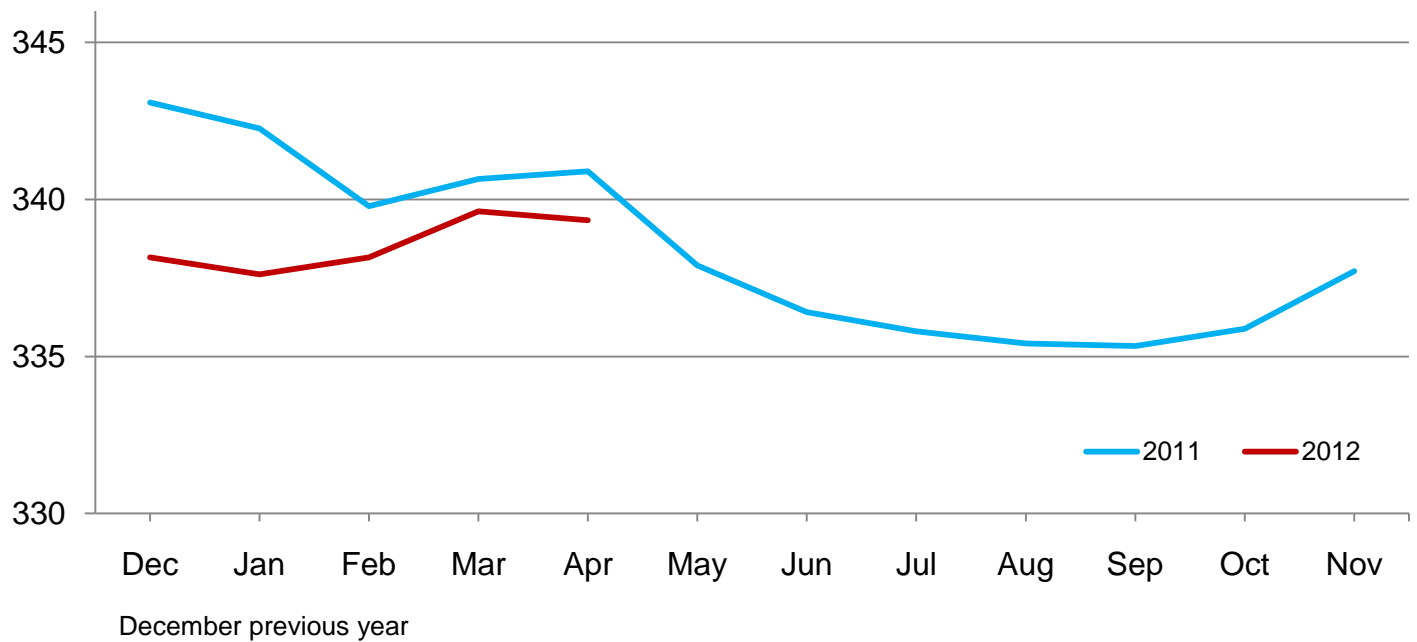
[Totals may not add due to rounding. Blank data cells indicate estimation period has not yet begun]

Month	Total eggs		Table eggs		Hatching eggs	
	2011	2012	2011	2012	2011	2012
	(million eggs)	(million eggs)	(million eggs)	(million eggs)	(million eggs)	(million eggs)
December ¹	7,927	7,932	6,845	6,894	1,083	1,038
January	7,833	7,831	6,736	6,786	1,098	1,046
February	7,013	7,235	6,022	6,247	990	987
March	7,840	7,859	6,735	6,800	1,106	1,059
April	7,617	7,578	6,534	6,542	1,083	1,037
May	7,773		6,651		1,123	
June	7,503		6,421		1,083	
July	7,732		6,633		1,100	
August	7,719		6,644		1,076	
September	7,503		6,476		1,028	
October	7,783		6,734		1,050	
November	7,612		6,605		1,007	
During year	91,855		79,036		12,827	

¹ December preceding year.

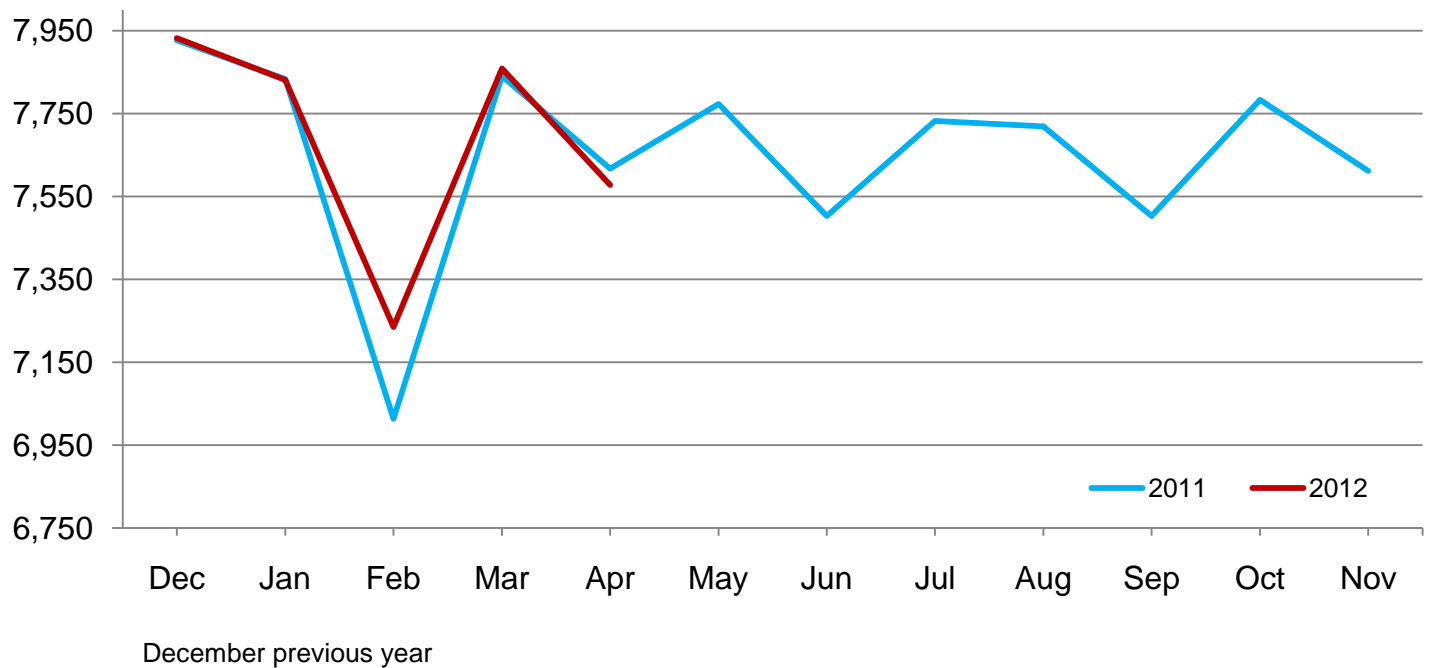
Average Layers During the Month – United States

Million layers



All Egg Production During the Month – United States

Million eggs



**Layers on Hand and Eggs Produced by Type and Forced Molt – United States:
March-April 2011 and 2012**

[Totals may not add due to rounding]

Item	2011	2012	2012 as percent of 2011
Layers during March			
All layers 1,000	340,655	339,626	100
Table egg type 1,000	282,262	285,052	101
Hatching egg type 1,000	58,393	54,574	93
Broiler-type hatching 1,000	55,415	51,477	93
Egg-type hatching 1,000	2,978	3,097	104
Eggs per 100 layers during March			
All layers number	2,301	2,314	101
Table egg type number	2,386	2,386	100
Hatching egg type number	1,894	1,940	102
Broiler-type hatching number	1,862	1,906	102
Egg-type hatching number	2,485	2,519	101
Eggs produced during March			
All layers million	7,840	7,859	100
Table egg type million	6,735	6,800	101
Hatching egg type million	1,106	1,059	96
Broiler-type hatching million	1,032	981	95
Egg-type hatching million	74	78	105
Layers on April 1			
All layers 1,000	342,237	340,342	99
Table egg type 1,000	283,609	285,079	101
Hatching egg type 1,000	58,628	55,263	94
Broiler-type hatching 1,000	55,698	52,169	94
Egg-type hatching 1,000	2,930	3,094	106
Eggs per 100 layers on April 1			
All layers number	74.6	75.2	101
Table egg type number	77.4	77.7	100
Hatching egg type number	60.9	62.1	102
Broiler-type hatching number	59.8	60.9	102
Egg-type hatching number	81.7	81.0	99
Forced molt layers on April 1			
Being molted percent	2.6	2.8	108
Molt completed percent	20.0	19.7	99
Layers sold for slaughter during March 1,000	13,838	13,092	95
Layers rendered, died, destroyed, composted or disappeared for any reason during March 1,000	6,978	6,280	90
Pullets on April 1 1,000	107,302	104,299	97
Pullets added during March ¹ 1,000	25,710	22,755	89

¹ Pullet chicks less than 3 days old added to pullet flocks.

Layers on Hand and Eggs Produced by Type and Forced Molt – United States: April-May 2011 and 2012

[Totals may not add due to rounding]

Item	2011	2012	2012 as percent of 2011
Layers during April			
All layers 1,000	340,896	339,338	100
Table egg type 1,000	282,033	283,812	101
Hatching egg type 1,000	58,863	55,526	94
Broiler-type hatching 1,000	55,935	52,486	94
Egg-type hatching 1,000	2,928	3,040	104
Eggs per 100 layers during April			
All layers number	2,234	2,233	100
Table egg type number	2,317	2,305	99
Hatching egg type number	1,840	1,868	102
Broiler-type hatching number	1,809	1,837	102
Egg-type hatching number	2,425	2,401	99
Eggs produced during April			
All layers million	7,617	7,578	99
Table egg type million	6,534	6,542	100
Hatching egg type million	1,083	1,037	96
Broiler-type hatching million	1,012	964	95
Egg-type hatching million	71	73	103
Layers on May 1			
All layers 1,000	339,520	338,299	100
Table egg type 1,000	280,439	282,526	101
Hatching egg type 1,000	59,081	55,773	94
Broiler-type hatching 1,000	56,161	52,795	94
Egg-type hatching 1,000	2,920	2,978	102
Eggs per 100 layers on May 1			
All layers number	74.3	73.6	99
Table egg type number	77.1	75.8	98
Hatching egg type number	61.2	62.3	102
Broiler-type hatching number	60.3	61.3	102
Egg-type hatching number	79.8	80.2	101
Forced molt layers on May 1			
Being molted percent	3.0	4.3	143
Molt completed percent	20.0	19.6	98
Layers sold for slaughter during April 1,000	13,812	14,130	102
Layers rendered, died, destroyed, composted or disappeared for any reason during April 1,000	11,678	8,838	76
Pullets on May 1 1,000	105,514	103,363	98
Pullets added during April ¹ 1,000	21,653	21,242	98

¹ Pullet chicks less than 3 days old added to pullet flocks.

Layers on Hand and Eggs Produced – States and United States: During March 2011 and 2012

State	Table egg layers in flocks 30,000 and above		All layers		Eggs per 100 for all layers	
	2011	2012	2011	2012	2011	2012
	(1,000 layers)	(1,000 layers)	(1,000 layers)	(1,000 layers)	(eggs)	(eggs)
Alabama	1,399	1,422	9,752	9,167	1,887	1,964
Arkansas	3,116	3,533	12,164	12,085	2,047	2,052
California	18,558	19,680	18,863	20,024	2,338	2,357
Colorado	3,366	4,331	3,816	4,782	2,358	2,447
Connecticut	2,196	2,231	2,270	2,303	2,335	2,345
Florida	9,123	9,027	9,468	9,343	2,324	2,355
Georgia	8,550	8,213	17,244	16,736	2,198	2,151
Illinois	4,235	4,174	4,460	4,380	2,287	2,374
Indiana	22,854	23,615	23,599	24,353	2,394	2,295
Iowa	52,574	50,073	53,428	51,062	2,313	2,379
Maine	3,431	3,528	3,486	3,583	2,438	2,428
Maryland	2,130	2,355	2,266	2,477	2,339	2,422
Michigan	10,251	11,470	10,422	11,644	2,504	2,465
Minnesota	9,984	9,423	10,448	9,919	2,297	2,329
Mississippi	1,523	1,434	6,020	5,461	2,043	2,088
Missouri	5,884	5,172	7,450	6,661	2,362	2,402
Nebraska	9,380	9,226	9,430	9,276	2,492	2,512
New York	4,005	4,305	4,236	4,534	2,502	2,470
North Carolina	5,839	5,740	13,501	12,855	2,029	2,069
Ohio	26,783	27,334	27,316	27,870	2,372	2,318
Oregon	2,292	2,073	2,413	2,220	2,528	2,568
Pennsylvania	24,057	23,740	25,282	24,912	2,464	2,441
South Carolina	3,139	3,120	4,429	4,310	2,213	2,274
South Dakota	2,267	2,238	2,307	2,278	2,471	2,371
Texas	13,872	14,846	18,309	18,769	2,288	2,318
Utah	3,451	3,588	3,481	3,618	2,471	2,432
Virginia	1,167	1,258	2,972	3,061	1,952	2,058
Washington	6,438	6,741	6,554	6,856	2,502	2,494
Wisconsin	4,007	4,289	4,583	4,881	2,335	2,418
Other States ¹	11,831	12,270	20,686	20,206	2,161	2,187
United States	277,702	280,449	340,655	339,626	2,301	2,314

¹ Includes data for States not published in this table.

Layers on Hand and Eggs Produced – States and United States: During April 2011 and 2012

State	Table egg layers in flocks 30,000 and above		All layers		Eggs per 100 for all layers	
	2011	2012	2011	2012	2011	2012
	(1,000 layers)	(1,000 layers)	(1,000 layers)	(1,000 layers)	(eggs)	(eggs)
Alabama	1,359	1,445	9,614	9,270	1,841	1,909
Arkansas	3,060	3,533	12,268	12,258	1,948	1,982
California	18,876	19,591	19,180	19,935	2,315	2,237
Colorado	3,518	4,253	3,987	4,734	2,282	2,366
Connecticut	2,217	2,254	2,289	2,324	2,315	2,324
Florida	9,232	8,591	9,569	8,899	2,236	2,326
Georgia	8,106	8,089	17,157	16,803	2,104	2,077
Illinois	4,288	4,055	4,515	4,258	2,148	2,325
Indiana	22,825	23,423	23,568	24,207	2,338	2,243
Iowa	52,302	50,571	53,112	51,544	2,241	2,299
Maine	3,537	3,508	3,592	3,563	2,339	2,358
Maryland	2,099	2,259	2,230	2,373	2,377	2,318
Michigan	10,326	11,641	10,496	11,803	2,458	2,364
Minnesota	9,883	9,605	10,350	10,076	2,280	2,233
Mississippi	1,513	1,461	6,060	5,623	2,013	1,992
Missouri	6,006	5,253	7,592	6,797	2,292	2,339
Nebraska	9,271	9,194	9,321	9,244	2,425	2,445
New York	3,838	4,197	4,065	4,426	2,411	2,395
North Carolina	5,926	5,595	13,573	12,752	1,975	2,023
Ohio	26,904	27,295	27,447	27,840	2,266	2,231
Oregon	2,155	2,204	2,293	2,334	2,486	2,485
Pennsylvania	24,392	23,275	25,618	24,427	2,401	2,342
South Carolina	3,047	3,079	4,363	4,349	2,177	2,161
South Dakota	2,331	2,245	2,371	2,285	2,320	2,319
Texas	13,628	14,805	18,097	18,802	2,210	2,250
Utah	3,420	3,503	3,450	3,533	2,377	2,264
Virginia	1,082	1,208	2,929	3,116	1,946	1,990
Washington	6,536	6,607	6,652	6,722	2,435	2,321
Wisconsin	3,969	4,171	4,548	4,763	2,199	2,288
Other States ¹	11,827	12,299	20,590	20,278	2,118	2,125
United States	277,473	279,209	340,896	339,338	2,234	2,233

¹ Includes data for States not published in this table.

Egg Production by Type – States and United States: March 2011 and 2012

[Totals may not add due to rounding. Data by type of flock not shown for some States to avoid disclosing individual operations, data included in United States totals]

State	Total production		Table eggs		Hatching eggs	
	2011	2012	2011	2012	2011	2012
	(million eggs)	(million eggs)	(million eggs)	(million eggs)	(million eggs)	(million eggs)
Alabama	184	180	31	34	153	146
Arkansas	249	248	77	83	172	165
California	441	472	(D)	(D)	(D)	(D)
Colorado	90	117	(D)	(D)	(D)	(D)
Connecticut	53	54	(D)	(D)	(D)	(D)
Florida	220	220	215	215	5	5
Georgia	379	360	211	192	168	168
Illinois	102	104	99	101	3	3
Indiana	565	559	551	545	14	14
Iowa	1,236	1,215	1,222	1,197	14	18
Maine	85	87	(D)	(D)	(D)	(D)
Maryland	53	60	52	59	1	1
Michigan	261	287	(D)	(D)	(D)	(D)
Minnesota	240	231	232	222	8	9
Mississippi	123	114	38	36	85	78
Missouri	176	160	(D)	(D)	(D)	(D)
Nebraska	235	233	235	233	-	-
New York	106	112	(D)	(D)	(D)	(D)
North Carolina	274	266	138	137	136	129
Ohio	648	646	(D)	(D)	(D)	(D)
Oregon	61	57	59	55	2	2
Pennsylvania	623	608	601	587	22	21
South Carolina	98	98	75	76	23	22
South Dakota	57	54	57	54	-	-
Texas	419	435	(D)	(D)	(D)	(D)
Utah	86	88	86	88	-	-
Virginia	58	63	25	30	33	33
Washington	164	171	(D)	(D)	(D)	(D)
Wisconsin	107	118	(D)	(D)	(D)	(D)
Other States ¹	447	442	309	319	139	124
United States	7,840	7,859	6,735	6,800	1,106	1,059

- Represents zero.

(D) Withheld to avoid disclosing data for individual operations.

¹ Includes data for States not published in this table.

Egg Production by Type – States and United States: April 2011 and 2012

[Totals may not add due to rounding. Data by type of flock not shown for some States to avoid disclosing individual operations, data included in United States totals]

State	Total production		Table eggs		Hatching eggs	
	2011	2012	2011	2012	2011	2012
	(million eggs)	(million eggs)	(million eggs)	(million eggs)	(million eggs)	(million eggs)
Alabama	177	177	31	34	146	143
Arkansas	239	243	72	81	167	162
California	444	446	(D)	(D)	(D)	(D)
Colorado	91	112	(D)	(D)	(D)	(D)
Connecticut	53	54	(D)	(D)	(D)	(D)
Florida	214	207	208	203	6	4
Georgia	361	349	193	184	168	165
Illinois	97	99	94	96	3	3
Indiana	551	543	538	529	13	14
Iowa	1,190	1,185	1,177	1,168	13	17
Maine	84	84	(D)	(D)	(D)	(D)
Maryland	53	55	51	54	2	1
Michigan	258	279	(D)	(D)	(D)	(D)
Minnesota	236	225	228	217	8	8
Mississippi	122	112	37	34	85	78
Missouri	174	159	(D)	(D)	(D)	(D)
Nebraska	226	226	226	226	-	-
New York	98	106	(D)	(D)	(D)	(D)
North Carolina	268	258	135	132	133	126
Ohio	622	621	(D)	(D)	(D)	(D)
Oregon	57	58	55	56	2	2
Pennsylvania	615	572	593	553	22	19
South Carolina	95	94	72	73	23	21
South Dakota	55	53	55	53	-	-
Texas	400	423	(D)	(D)	(D)	(D)
Utah	82	80	82	80	-	-
Virginia	57	62	24	28	33	34
Washington	162	156	(D)	(D)	(D)	(D)
Wisconsin	100	109	(D)	(D)	(D)	(D)
Other States ¹	436	431	301	310	136	122
United States	7,617	7,578	6,534	6,542	1,083	1,037

- Represents zero.

(D) Withheld to avoid disclosing data for individual operations.

¹ Includes data for States not published in this table.

Forced Molt as Percent of All Layers by Month – United States: 2011-2012

[As of the first of the month. Blank data cells indicate estimation period has not yet begun]

Month	Being molted		Molt completed	
	2011 (percent)	2012 (percent)	2011 (percent)	2012 (percent)
January	2.8	2.8	21.2	19.9
February	3.6	4.8	20.2	18.8
March	3.0	3.8	20.1	19.9
April	2.6	2.8	20.0	19.7
May	3.0	4.3	20.0	19.6
June	3.8		19.5	
July	3.5		19.6	
August	3.6		19.5	
September	3.2		20.3	
October	3.9		20.4	
November	2.5		21.2	
December	1.7		21.1	

Forced Molt as Percent of All Layers – States and United States: May 1, 2011 and 2012

[As of the first of the month]

State	Being molted		Molt completed	
	2011 (percent)	2012 (percent)	2011 (percent)	2012 (percent)
Alabama	0.5	0.5	7.5	6.5
Arkansas	0.5	2.0	8.5	9.5
California	2.5	8.5	26.0	27.0
Colorado	6.0	8.0	15.5	28.0
Connecticut	9.0	8.0	17.0	16.0
Florida	5.0	8.0	35.0	32.0
Georgia	1.5	1.5	16.5	11.0
Illinois	4.5	-	25.0	20.0
Indiana	3.5	4.5	25.5	33.5
Iowa	4.5	5.0	34.5	32.5
Maine	-	-	-	-
Maryland	-	8.0	26.5	4.0
Michigan	3.0	3.0	11.5	16.0
Minnesota	6.0	6.0	25.0	18.5
Mississippi	2.0	3.0	10.0	10.0
Missouri	-	4.0	19.5	19.5
Nebraska	-	1.0	4.0	2.0
New York	-	2.5	5.5	10.0
North Carolina	-	2.5	17.5	12.5
Ohio	3.5	4.5	18.0	11.0
Oregon	11.0	10.5	18.0	29.0
Pennsylvania	1.0	3.0	9.5	8.5
South Carolina	-	4.0	20.0	16.5
South Dakota	4.0	8.0	21.0	18.0
Texas	5.0	4.0	16.5	20.0
Utah	5.5	12.0	35.0	29.5
Virginia	3.0	6.0	5.5	9.0
Washington	8.0	10.0	25.0	29.0
Wisconsin	6.5	-	23.0	31.5
Other States ¹	2.2	2.8	14.9	18.8
United States	3.0	4.3	20.0	19.6

- Represents zero.

¹ Includes data for States not published in this table.

Hatchery Production – United States: 2011 and 2012

Item	2011	2012	2012 as percent of 2011
	(1,000)	(1,000)	(percent)
Egg-type			
Eggs in incubators on May 1	40,521	41,984	104
Chicks hatched during April	42,959	39,702	92
Chicks hatched January through April	164,567	159,901	97
Pullets hatched during April for intended placements:			
Hatchery supply flocks	287	172	60
Cumulative potential placements 7-18 months earlier ¹	3,161	3,002	95
Broiler-type			
Eggs in incubators on May 1	647,762	619,355	96
Chicks hatched during April	777,866	747,697	96
Chicks hatched January through April	3,061,666	2,968,905	97
Pullets hatched during April for intended placements:			
Hatchery supply flocks	7,044	6,524	93
Cumulative potential placements 7-15 months earlier ²	63,751	63,209	99

¹ 2012 includes pullet chicks hatched October 2010 through September 2011.

² 2012 includes pullet chicks hatched January 2011 through September 2011.

Egg-Type Eggs in Incubators – Regions and United States: May 1, 2011 and 2012

[See regional listing on page 19]

Region	2011	2012	2012 as percent of 2011
	(1,000 eggs)	(1,000 eggs)	(percent)
North Atlantic	3,631	4,139	114
East North Central	8,494	8,927	105
West North Central	9,328	9,770	105
South Atlantic	4,750	5,149	108
South Central	6,120	6,286	103
West	8,198	7,713	94
United States	40,521	41,984	104

Egg-Type Chicks Hatched by Month – United States: 2011-2012

[Blank data cells indicate estimation period has not yet begun]

Month	By months			Cumulative		
	2011	2012	2012 as percent of 2011	2011	2012	2012 as percent of 2011
	(1,000 chicks)	(1,000 chicks)	(percent)	(1,000 chicks)	(1,000 chicks)	(percent)
January	40,590	40,277	99	40,590	40,277	99
February	37,415	39,300	105	78,005	79,577	102
March	43,603	40,622	93	121,608	120,199	99
April	42,959	39,702	92	164,567	159,901	97
May	42,949			207,516		
June	38,920			246,436		
July	36,950			283,386		
August	41,431			324,817		
September	39,805			364,622		
October	37,624			402,246		
November	37,512			439,758		
December	39,071			478,829		

Intended Placements of Egg-Type Pullet Chicks for Hatchery Supply Flocks by Month – United States: 2011-2012

[Blank data cells indicate estimation period has not yet begun]

Month	Pullet chicks hatched		2012 as percent of 2011	Cumulative potential placements relative to current supply flocks 7-18 months earlier ¹	
	2011	2012		2011	2012
	(1,000 chicks)	(1,000 chicks)	(percent)	(1,000 chicks)	(1,000 chicks)
January	220	263	120	3,292	2,920
February	244	238	98	3,168	2,936
March	253	210	83	3,130	3,001
April	287	172	60	3,161	3,002
May	196			3,054	3,098
June	302			3,027	3,053
July	234			2,981	3,067
August	318			2,974	3,110
September	252			2,922	3,104
October	266			2,915	3,061
November	218			2,970	2,946
December	277			2,936	
Total	3,067				

¹ For April 2012, includes breeder pullet chicks hatched October 2010 through September 2011. The 7-18 months represent the first laying cycle. Molting and additional laying cycles will increase the cumulative potential placements.

Broiler-Type Eggs in Incubators – Regions and United States: May 1, 2011 and 2012

[See regional listing on page 19]

Region	2011	2012	2012 as percent of 2011
	(1,000 eggs)	(1,000 eggs)	(percent)
North Atlantic	12,722	12,587	99
East North Central	12,573	12,459	99
West North Central	28,299	28,104	99
South Atlantic	242,276	237,007	98
South Central	327,291	307,165	94
West	24,601	22,033	90
United States	647,762	619,355	96

Broiler-Type Chicks Hatched – States and United States: April 2011 and 2012

State	During April			January-April		
	2011	2012	2012 as percent of 2011	2011	2012	2012 as percent of 2011
	(1,000 chicks)	(1,000 chicks)	(percent)	(1,000 chicks)	(1,000 chicks)	(percent)
Alabama	109,271	102,001	93	433,167	407,792	94
Arkansas	85,792	76,200	89	338,634	299,496	88
Delaware	14,072	12,554	89	57,047	48,330	85
Florida	4,889	4,729	97	18,904	18,805	99
Georgia	119,260	116,701	98	473,548	465,426	98
Kentucky	28,150	27,783	99	108,375	109,212	101
Louisiana	12,325	12,774	104	48,723	50,431	104
Maryland	27,848	26,362	95	108,967	106,451	98
Mississippi	69,556	66,181	95	273,177	263,389	96
Missouri	28,548	28,117	98	113,455	115,406	102
North Carolina	72,817	73,012	100	284,317	292,997	103
Oklahoma	25,781	24,279	94	99,714	97,614	98
Pennsylvania	13,069	13,496	103	54,882	54,467	99
South Carolina	18,981	18,796	99	76,410	75,185	98
Texas	55,624	54,773	98	219,198	215,976	99
Virginia	23,366	22,533	96	88,459	89,033	101
California, Tennessee, and West Virginia	42,264	40,379	96	162,831	155,942	96
19 States ¹	751,613	720,670	96	2,959,808	2,865,952	97
Other States ²	26,253	27,027	103	101,858	102,953	101
United States	777,866	747,697	96	3,061,666	2,968,905	97

¹ States in the weekly hatchery production estimating program.

² Not published separately to avoid disclosing data for individual operations.

Broiler-Type Chicks Hatched by Month – United States: 2011-2012

[Blank data cells indicate estimation period has not yet begun]

Month	By months			Cumulative		
	2011	2012	2012 as percent of 2011	2011	2012	2012 as percent of 2011
	(1,000 chicks)	(1,000 chicks)	(percent)	(1,000 chicks)	(1,000 chicks)	(percent)
January	781,313	751,870	96	781,313	751,870	96
February	708,722	705,113	99	1,490,035	1,456,983	98
March	793,765	764,225	96	2,283,800	2,221,208	97
April	777,866	747,697	96	3,061,666	2,968,905	97
May	804,484			3,866,150		
June	766,371			4,632,521		
July	768,432			5,400,953		
August	758,980			6,159,933		
September	719,606			6,879,539		
October	715,886			7,595,425		
November	702,169			8,297,594		
December	758,382			9,055,976		

Intended Placements of Broiler-Type Pullet Chicks for Hatchery Supply Flocks by Month and Total: 2011-2012

[Blank data cells indicate estimation period has not yet begun]

Month	Pullet chicks hatched		2012 as percent of 2011	Cumulative potential placements relative to current supply flocks 7-15 months earlier ¹	
	2011 (1,000 chicks)	2012 (1,000 chicks)		2011 (1,000 chicks)	2012 (1,000 chicks)
United States placements					
January	6,557	6,673	102	62,996	64,111
February	7,284	7,025	96	63,283	63,679
March	7,058	6,753	96	63,250	63,323
April	7,044	6,524	93	63,751	63,209
May	7,721			63,990	62,941
June	7,211			64,558	62,547
July	6,444			64,656	61,927
August	7,233			64,388	61,556
September	6,657			63,321	60,860
October	6,289			63,251	60,402
November	6,890			63,620	60,482
December	6,438			64,028	
Annual total	82,826				
Total placements ²					
January	8,187	8,201	100		
February	8,931	8,818	99		
March	9,023	8,525	94		
April	8,944	8,232	92		
May	9,612				
June	9,225				
July	8,131				
August	8,700				
September	8,546				
October	7,938				
November	8,489				
December	8,279				
Annual total	104,005				

¹ For April 2012, includes breeder pullet chicks hatched January 2011 through September 2011.

² United States production of intended placements worldwide.

Statistical Methodology

Survey Procedures: Primary data for the *Chickens and Eggs* report are from weekly and/or monthly questionnaires sent to producers. An attempt is made to collect information for layer and egg estimates from each known contractor and independent producer who has at least 30,000 table egg layers, flocks of hatchery supply layers, or pullet only operations with at least 500 pullets. Coverage for operations with less than 30,000 table egg layers are estimated each month based on data reported in December. Approximately 650 contractors, independent egg producers, and pullet only operations are contacted each month. All known hatcheries, approximately 300, are contacted for information on a weekly and/or monthly basis.

Estimating Procedures: Sound statistical methodology is employed to derive estimates from the reported data. All data are analyzed for unusual values. Data from each operation are compared to their own past operating profile and to trends from similar operations. Data for missing operations are estimated based on similar operations or historical data. NASS field offices prepare these estimates by using a combination of survey indications and historic trends. Individual State estimates are reviewed by the Agricultural Statistics Board for reasonableness. Individual hatchery data are summed to State, regional, and United States totals.

For chicken hatcheries, chicks hatched consist of all chicks of domesticated breeds including males and chicks destined for hatchery supply flocks and research purposes. Eggs set are eggs in incubators for the purpose of hatching. The relationship of egg-type chicks hatched to chicken inventory and poultry marketings are carefully monitored. The disposition of egg-type chicks hatched prior to placement into the laying flock can vary significantly, which can make comparisons to changes in layer inventory inconsistent over time. Broiler chicks placed are specifically placed on feed for meat production. Intended placement data reported by leading breeders include pullet chicks expected from eggs sold the preceding month. The breeders in this report account for a large percentage of replacement pullets for hatchery supply flocks. Production of replacement pullets by these breeders indicates the number of pullets available to hatchery supply layer flocks several months before the pullets will actually move into the laying flocks. "Hatchery Supply Flocks" include all generations of layers which could lay eggs to supply a hatchery. This includes the generations of parents, grandparents, great-grandparents, pedigree, etc. Also included are research flocks, vaccine flocks, and specific pathogen-free flocks. The broiler cumulative potential placements are a moving total of the intended placements 7-15 months earlier. The egg-type cumulative potential placements of 7-18 months earlier represent the first laying cycle. Molting and additional laying cycles will increase the cumulative potential placements of egg-type hatching flocks.

Revision Policy: The previous month's estimates are subject to revision if late reports or corrected data indicates a different level. Additionally, revisions after the monthly report will be made at the end of the marketing year and published in the annual reports of *Chickens and Eggs Summary* and *Hatchery Production Summary*. Estimates will also be reviewed for chickens and eggs after data from the 5-year Census of Agriculture are available. No revisions will be made after that date.

Reliability: Estimates are based on a census of all known contractors and independent producers who have at least 30,000 table egg layers, flocks of hatchery supply layers, pullet only operations with at least 500 pullets, or operating hatcheries and therefore, have no sampling error. However, estimates are subject to errors such as omission, duplication, and mistakes in reporting, recording, and processing the data. While these errors cannot be measured directly, they are minimized through strict quality controls in the data collection process and a careful review of all reported data for consistency and reasonableness.

To assist in evaluating the reliability of the estimates in this report, the "Root Mean Square Error" is shown for selected items in the following table. The "Root Mean Square Error" is a statistical measure based on past performance and is computed using the differences between first and final estimates. The "Root Mean Square Error" for all layers over the past 24 months is 0.3 percent. This means that chances are 2 out of 3 that the final estimate will not be above or below the current estimate of 339 million layers by more than 0.3 percent. Chances are 9 out of 10 that the difference will not exceed 0.5 percent.

Reliability of Layer and Egg Estimates

[Based on data for the past twenty-four months]

Item	Root mean square error	90 percent confidence level	Difference between first and latest estimate				
			Average	Smallest	Largest	Months	
						Below latest	Above latest
All layers	(percent) 0.3	(percent) 0.5	(1,000) 773	(1,000) 25	(1,000) 1,904	(number) 18	(number) 6
Eggs	0.3	0.5	(million) 16	(million) 1	(million) 39	18	6

Regional Listing

- North Atlantic:** Connecticut, Maine, Massachusetts, New Hampshire, New Jersey, New York, Pennsylvania, Rhode Island, Vermont.
- East North Central:** Illinois, Indiana, Michigan, Ohio, Wisconsin.
- West North Central:** Iowa, Kansas, Minnesota, Missouri, Nebraska, North Dakota, South Dakota.
- South Atlantic:** Delaware, Florida, Georgia, Maryland, North Carolina, South Carolina, Virginia, West Virginia.
- South Central:** Alabama, Arkansas, Kentucky, Louisiana, Mississippi, Oklahoma, Tennessee, Texas.
- West:** Alaska, Arizona, California, Colorado, Hawaii, Idaho, Montana, New Mexico, Nevada, Oregon, Utah, Washington, Wyoming.

Terms and Definitions of Chickens and Eggs Estimates

All Layers includes both table egg and hatching egg flocks regardless of size.

Intended Placements are reported by leading breeders. Coverage may not be 100 percent. Includes expected pullet chicks from eggs sold during the preceding month at the rate of 125 pullet chicks per case of 30 dozen eggs.

Information Contacts

Listed below are the commodity specialists in the Livestock Branch of the National Agricultural Statistics Service to contact for additional information. E-mail inquiries may be sent to nass@nass.usda.gov

- Dan Kerestes, Chief, Livestock Branch (202) 720-3570
- Bruce Boess, Head, Poultry and Specialty Commodities Section (202) 720-4447
- Cody Brokmeyer – Poultry Slaughter, Turkey Hatchery, Turkeys Raised (202) 690-3237
- David Colwell – Cold Storage (202) 720-8784
- LaKeya Jones – Catfish Processing, Catfish Production, Trout Production,
 Census of Aquaculture, Honey, Egg Products, Mink (202) 720-0585
- Kim Linonis – Layers, Eggs (202) 690-8632
- Miste Salmon – Broiler Hatchery, Chicken Hatchery (202) 720-3244

Access to NASS Reports

For your convenience, you may access NASS reports and products the following ways:

- All reports are available electronically, at no cost, on the NASS web site: <http://www.nass.usda.gov>
- Both national and state specific reports are available via a free e-mail subscription. To set-up this free subscription, visit <http://www.nass.usda.gov> and in the “Follow NASS” box under “Receive reports by Email,” click on “National” or “State” to select the reports you would like to receive.
- Printed reports may be purchased from the National Technical Information Service (NTIS) by calling toll-free (800) 999-6779, or (703) 605-6220 if calling from outside the United States or Canada. Accepted methods of payment are Visa, MasterCard, check, or money order.

For more information on NASS surveys and reports, call the NASS Agricultural Statistics Hotline at (800) 727-9540, 7:30 a.m. to 4:00 p.m. ET, or e-mail: nass@nass.usda.gov.

The United States Department of Agriculture (USDA) prohibits discrimination in all its programs and activities on the basis of race, color, national origin, age, disability, and where applicable, sex, marital status, familial status, parental status, religion, sexual orientation, political beliefs, genetic information, reprisal, or because all or a part of an individual's income is derived from any public assistance program. (Not all prohibited bases apply to all programs.) Persons with disabilities who require alternative means for communication of program information (Braille, large print, audiotape, etc.) should contact USDA's TARGET Center at (202) 720-2600 (voice and TDD).

To file a complaint of discrimination, write to USDA, Assistant Secretary for Civil Rights, Office of the Assistant Secretary for Civil Rights, 1400 Independence Avenue, S.W., Stop 9410, Washington, DC 20250-9410, or call toll-free at (866) 632-9992 (English) or (800) 877-8339 (TDD) or (866) 377-8642 (English Federal-relay) or (800) 845-6136 (Spanish Federal-relay). USDA is an equal opportunity provider and employer.