



# Chickens and Eggs

ISSN: 1948-9064

---

Released June 22, 2012, by the National Agricultural Statistics Service (NASS), Agricultural Statistics Board, United States Department of Agriculture (USDA).

## May Egg Production Down Slightly

United States egg production totaled 7.77 billion during May 2012, down slightly from last year. Production included 6.69 billion table eggs, and 1.08 billion hatching eggs, of which 1.01 billion were broiler-type and 73 million were egg-type. The total number of layers during May 2012 averaged 338 million, up slightly from last year. May egg production per 100 layers was 2,296 eggs, down slightly from May 2011.

All layers in the United States on June 1, 2012 totaled 338 million, up slightly from last year. The 338 million layers consisted of 282 million layers producing table or market type eggs, 52.9 million layers producing broiler-type hatching eggs, and 2.96 million layers producing egg-type hatching eggs. Rate of lay per day on June 1, 2012, averaged 74.4 eggs per 100 layers, up slightly from June 1, 2011.

## Egg-Type Chicks Hatched Up 1 Percent

Egg-type chicks hatched during May 2012 totaled 43.3 million, up 1 percent from May 2011. Eggs in incubators totaled 40.3 million on June 1, 2012, up 8 percent from a year ago.

Domestic placements of egg-type pullet chicks for future hatchery supply flocks by leading breeders totaled 302 thousand during May 2012, up 54 percent from May 2011.

## Broiler-Type Chicks Hatched Down 3 Percent

Broiler-type chicks hatched during May 2012 totaled 778 million, down 3 percent from May 2011. Eggs in incubators totaled 626 million on June 1, 2012, down 2 percent from a year earlier.

Leading breeders placed 7.48 million broiler-type pullet chicks for future domestic hatchery supply flocks during May 2012, down 3 percent from May 2011.

**This page intentionally left blank.**

## Contents

Average Number of All Layers on Hand During the Month – United States: 2011-2012.....	4
Egg Production During the Month by Type – United States: 2011-2012.....	4
Average Number of Layers During the Month – United States.....	5
All Egg Production During the Month – United States .....	5
Layers on Hand and Eggs Produced by Type and Forced Molt – United States: April-May 2011 and 2012 .....	6
Layers on Hand and Eggs Produced by Type and Forced Molt – United States: May-June 2011 and 2012 .....	7
Layers on Hand and Eggs Produced – States and United States: During April 2011 and 2012 .....	8
Layers on Hand and Eggs Produced – States and United States: During May 2011 and 2012 .....	9
Egg Production by Type – States and United States: April 2011 and 2012.....	10
Egg Production by Type – States and United States: May 2011 and 2012.....	11
Forced Molt as Percent of All Layers by Month – United States: 2011-2012.....	12
Forced Molt as Percent of All Layers – States and United States: June 1, 2011 and 2012 .....	12
Hatchery Production – United States: 2011 and 2012 .....	13
Egg-Type Eggs in Incubators – Regions and United States: June 1, 2011 and 2012 .....	14
Egg-Type Chicks Hatched by Month – United States: 2011-2012.....	14
Intended Placements of Egg-Type Pullet Chicks for Hatchery Supply Flocks by Month – United States: 2011-2012.....	15
Broiler-Type Eggs in Incubators – Regions and United States: June 1, 2011 and 2012.....	15
Broiler-Type Chicks Hatched – States and United States: May 2011 and 2012.....	16
Broiler-Type Chicks Hatched by Month – United States: 2011-2012.....	16
Intended Placements of Broiler-Type Pullet Chicks for Hatchery Supply Flocks by Month and Total: 2011-2012.....	17
Statistical Methodology .....	18
Regional Listing.....	19
Terms and Definitions of Chickens and Eggs Estimates .....	19
Information Contacts .....	19

## Average Number of All Layers on Hand During the Month – United States: 2011-2012

[Blank data cells indicate estimation period has not yet begun]

Month	2011		2012	
	(1,000 layers)		(1,000 layers)	
December <sup>1</sup> .....		343,083		338,158
January .....		342,266		337,618
February .....		339,787		338,151
March .....		340,655		339,626
April .....		340,896		339,517
May .....		337,897		338,264
June .....		336,411		
July .....		335,799		
August .....		335,412		
September .....		335,328		
October .....		335,884		
November .....		337,716		

<sup>1</sup> December preceding year.

## Egg Production During the Month by Type – United States: 2011-2012

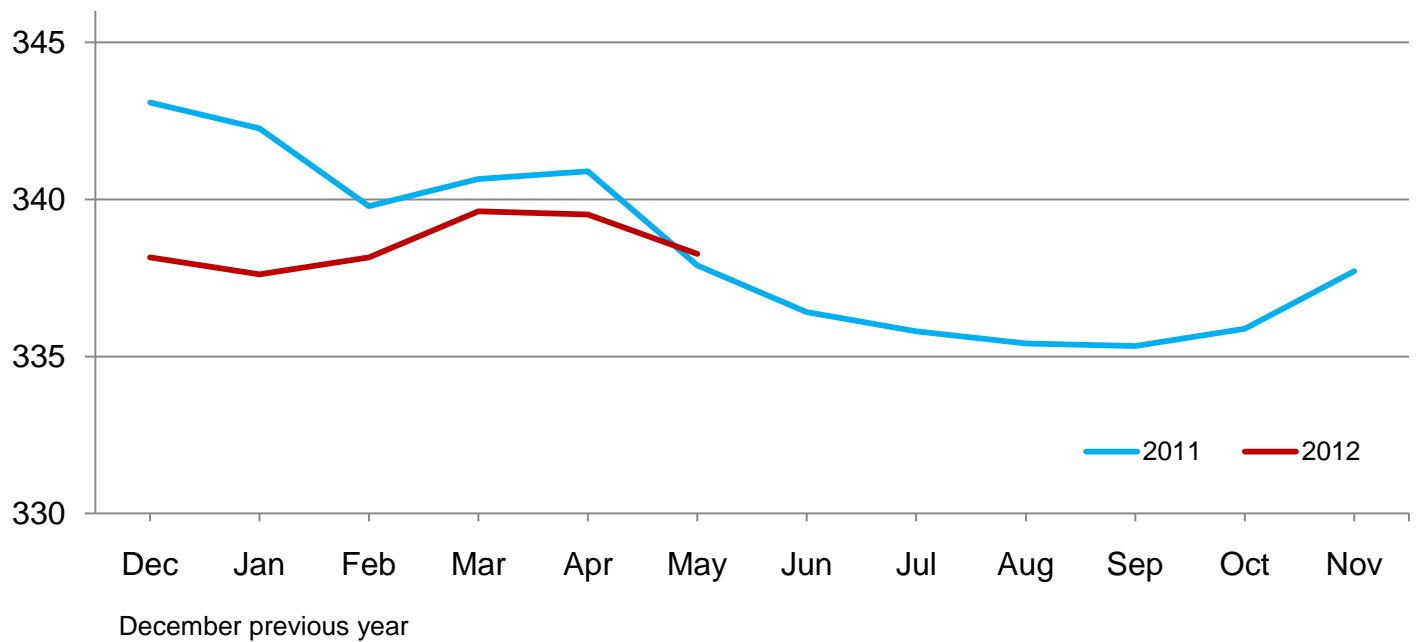
[Totals may not add due to rounding. Blank data cells indicate estimation period has not yet begun]

Month	Total eggs		Table eggs		Hatching eggs	
	2011	2012	2011	2012	2011	2012
	(million eggs)	(million eggs)	(million eggs)	(million eggs)	(million eggs)	(million eggs)
December <sup>1</sup> .....	7,927	7,932	6,845	6,894	1,083	1,038
January .....	7,833	7,831	6,736	6,786	1,098	1,046
February .....	7,013	7,235	6,022	6,247	990	987
March .....	7,840	7,859	6,735	6,800	1,106	1,059
April .....	7,617	7,582	6,534	6,545	1,083	1,038
May .....	7,773	7,766	6,651	6,689	1,123	1,078
June .....	7,503		6,421		1,083	
July .....	7,732		6,633		1,100	
August .....	7,719		6,644		1,076	
September .....	7,503		6,476		1,028	
October .....	7,783		6,734		1,050	
November .....	7,612		6,605		1,007	
During year .....	91,855		79,036		12,827	

<sup>1</sup> December preceding year.

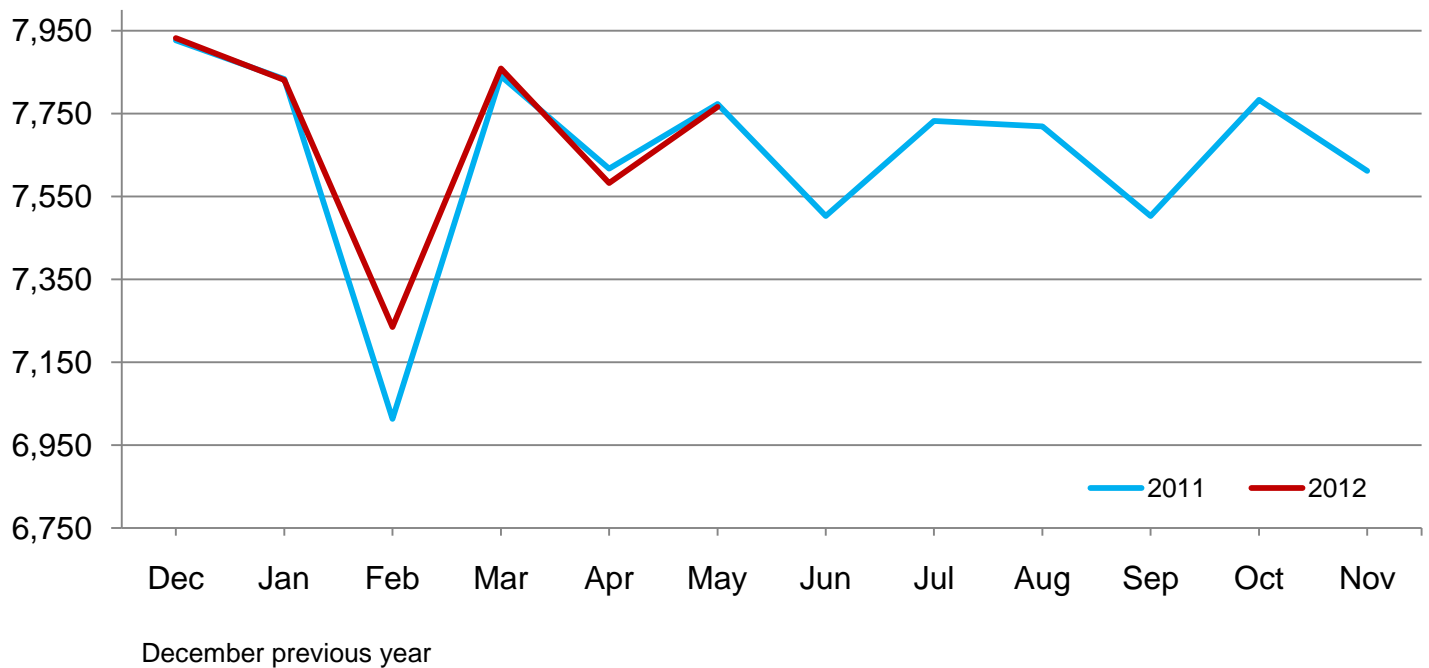
## Average Layers During the Month – United States

Million layers



## All Egg Production During the Month – United States

Million eggs



**Layers on Hand and Eggs Produced by Type and Forced Molt – United States:  
April-May 2011 and 2012**

[Totals may not add due to rounding]

Item	2011	2012	2012 as percent of 2011
Layers during April			
All layers ..... 1,000	340,896	339,517	100
Table egg type ..... 1,000	282,033	283,913	101
Hatching egg type ..... 1,000	58,863	55,604	94
Broiler-type hatching ..... 1,000	55,935	52,564	94
Egg-type hatching ..... 1,000	2,928	3,040	104
Eggs per 100 layers during April			
All layers ..... number	2,234	2,233	100
Table egg type ..... number	2,317	2,305	99
Hatching egg type ..... number	1,840	1,867	101
Broiler-type hatching ..... number	1,809	1,836	101
Egg-type hatching ..... number	2,425	2,401	99
Eggs produced during April			
All layers ..... million	7,617	7,582	100
Table egg type ..... million	6,534	6,545	100
Hatching egg type ..... million	1,083	1,038	96
Broiler-type hatching ..... million	1,012	965	95
Egg-type hatching ..... million	71	73	103
Layers on May 1			
All layers ..... 1,000	339,520	338,654	100
Table egg type ..... 1,000	280,439	282,727	101
Hatching egg type ..... 1,000	59,081	55,927	95
Broiler-type hatching ..... 1,000	56,161	52,949	94
Egg-type hatching ..... 1,000	2,920	2,978	102
Eggs per 100 layers on May 1			
All layers ..... number	74.3	73.6	99
Table egg type ..... number	77.1	75.8	98
Hatching egg type ..... number	61.2	62.3	102
Broiler-type hatching ..... number	60.3	61.3	102
Egg-type hatching ..... number	79.8	80.2	101
Forced molt layers on May 1			
Being molted ..... percent	3.0	4.3	143
Molt completed ..... percent	20.0	19.6	98
Layers sold for slaughter during April ..... 1,000	13,812	14,154	102
Layers rendered, died, destroyed, composted or disappeared for any reason during April ..... 1,000	11,678	8,844	76
Pullets on May 1 ..... 1,000	105,514	103,644	98
Pullets added during April <sup>1</sup> ..... 1,000	21,653	21,552	100

<sup>1</sup> Pullet chicks less than 3 days old added to pullet flocks.

**Layers on Hand and Eggs Produced by Type and Forced Molt – United States:  
May-June 2011 and 2012**

[Totals may not add due to rounding]

Item	2011	2012	2012 as percent of 2011
<b>Layers during May</b>			
All layers ..... 1,000	337,897	338,264	100
Table egg type ..... 1,000	279,052	282,381	101
Hatching egg type ..... 1,000	58,845	55,883	95
Broiler-type hatching ..... 1,000	55,873	52,913	95
Egg-type hatching ..... 1,000	2,972	2,970	100
<b>Eggs per 100 layers during May</b>			
All layers ..... number	2,300	2,296	100
Table egg type ..... number	2,383	2,369	99
Hatching egg type ..... number	1,908	1,929	101
Broiler-type hatching ..... number	1,879	1,899	101
Egg-type hatching ..... number	2,456	2,458	100
<b>Eggs produced during May</b>			
All layers ..... million	7,773	7,766	100
Table egg type ..... million	6,651	6,689	101
Hatching egg type ..... million	1,123	1,078	96
Broiler-type hatching ..... million	1,050	1,005	96
Egg-type hatching ..... million	73	73	100
<b>Layers on June 1</b>			
All layers ..... 1,000	336,232	337,840	100
Table egg type ..... 1,000	277,646	282,016	102
Hatching egg type ..... 1,000	58,586	55,824	95
Broiler-type hatching ..... 1,000	55,571	52,869	95
Egg-type hatching ..... 1,000	3,015	2,955	98
<b>Eggs per 100 layers on June 1</b>			
All layers ..... number	74.1	74.4	100
Table egg type ..... number	76.7	76.9	100
Hatching egg type ..... number	61.7	62.2	101
Broiler-type hatching ..... number	60.7	61.3	101
Egg-type hatching ..... number	80.5	78.1	97
<b>Forced molt layers on June 1</b>			
Being molted ..... percent	3.8	2.9	76
Molt completed ..... percent	19.5	20.2	104
Layers sold for slaughter during May ..... 1,000	14,951	14,991	100
Layers rendered, died, destroyed, composted or disappeared for any reason during May ..... 1,000	9,144	8,556	94
Pullets on June 1 ..... 1,000	107,205	105,546	98
Pullets added during May <sup>1</sup> ..... 1,000	23,467	25,313	108

<sup>1</sup> Pullet chicks less than 3 days old added to pullet flocks.

## Layers on Hand and Eggs Produced – States and United States: During April 2011 and 2012

State	Table egg layers in flocks 30,000 and above		All layers		Eggs per 100 for all layers	
	2011	2012	2011	2012	2011	2012
	(1,000 layers)	(1,000 layers)	(1,000 layers)	(1,000 layers)	(eggs)	(eggs)
Alabama .....	1,359	1,445	9,614	9,270	1,841	1,909
Arkansas .....	3,060	3,533	12,268	12,258	1,948	1,982
California .....	18,876	19,591	19,180	19,935	2,315	2,237
Colorado .....	3,518	4,253	3,987	4,734	2,282	2,366
Connecticut .....	2,217	2,254	2,289	2,324	2,315	2,324
Florida .....	9,232	8,591	9,569	8,899	2,236	2,326
Georgia .....	8,106	8,135	17,157	16,894	2,104	2,078
Illinois .....	4,288	4,055	4,515	4,258	2,148	2,325
Indiana .....	22,825	23,423	23,568	24,207	2,338	2,243
Iowa .....	52,302	50,571	53,112	51,544	2,241	2,299
Maine .....	3,537	3,508	3,592	3,563	2,339	2,358
Maryland .....	2,099	2,259	2,230	2,373	2,377	2,318
Michigan .....	10,326	11,641	10,496	11,803	2,458	2,364
Minnesota .....	9,883	9,605	10,350	10,076	2,280	2,233
Mississippi .....	1,513	1,461	6,060	5,623	2,013	1,992
Missouri .....	6,006	5,253	7,592	6,797	2,292	2,339
Nebraska .....	9,271	9,194	9,321	9,244	2,425	2,445
New York .....	3,838	4,197	4,065	4,426	2,411	2,395
North Carolina .....	5,926	5,595	13,573	12,785	1,975	2,018
Ohio .....	26,904	27,295	27,447	27,840	2,266	2,231
Oregon .....	2,155	2,204	2,293	2,334	2,486	2,485
Pennsylvania .....	24,392	23,330	25,618	24,482	2,401	2,345
South Carolina .....	3,047	3,079	4,363	4,349	2,177	2,161
South Dakota .....	2,331	2,245	2,371	2,285	2,320	2,319
Texas .....	13,628	14,805	18,097	18,802	2,210	2,250
Utah .....	3,420	3,503	3,450	3,533	2,377	2,264
Virginia .....	1,082	1,208	2,929	3,116	1,946	1,990
Washington .....	6,536	6,607	6,652	6,722	2,435	2,321
Wisconsin .....	3,969	4,171	4,548	4,763	2,199	2,288
Other States <sup>1</sup> .....	11,827	12,299	20,590	20,278	2,118	2,125
United States .....	277,473	279,310	340,896	339,517	2,234	2,233

<sup>1</sup> Includes data for States not published in this table.



## Layers on Hand and Eggs Produced – States and United States: During May 2011 and 2012

State	Table egg layers in flocks 30,000 and above		All layers		Eggs per 100 for all layers	
	2011	2012	2011	2012	2011	2012
	(1,000 layers)	(1,000 layers)	(1,000 layers)	(1,000 layers)	(eggs)	(eggs)
Alabama .....	1,318	1,528	9,417	9,311	1,890	1,944
Arkansas .....	3,199	3,524	12,439	12,442	2,042	2,066
California .....	18,766	19,439	19,069	19,785	2,355	2,300
Colorado .....	3,493	4,023	3,943	4,503	2,435	2,487
Connecticut .....	2,191	2,230	2,261	2,297	2,433	2,438
Florida .....	9,143	8,204	9,508	8,517	2,293	2,348
Georgia .....	7,509	8,104	16,569	16,878	2,137	2,192
Illinois .....	4,168	4,203	4,393	4,410	2,322	2,336
Indiana .....	22,568	23,134	23,321	23,965	2,431	2,337
Iowa .....	52,095	50,960	52,921	51,894	2,320	2,372
Maine .....	3,493	3,465	3,548	3,520	2,424	2,443
Maryland .....	1,930	2,188	2,068	2,303	2,466	2,301
Michigan .....	10,188	11,473	10,352	11,623	2,463	2,486
Minnesota .....	9,737	9,738	10,226	10,186	2,337	2,327
Mississippi .....	1,474	1,459	6,129	5,748	2,039	2,070
Missouri .....	6,012	5,335	7,618	6,898	2,402	2,392
Nebraska .....	9,109	9,116	9,159	9,166	2,478	2,520
New York .....	3,858	4,228	4,086	4,456	2,496	2,469
North Carolina .....	5,884	5,747	13,590	12,947	2,127	2,039
Ohio .....	26,812	27,093	27,346	27,632	2,296	2,291
Oregon .....	2,152	2,104	2,306	2,223	2,428	2,519
Pennsylvania .....	23,858	22,761	25,078	23,925	2,476	2,420
South Carolina .....	3,103	2,969	4,446	4,254	2,249	2,210
South Dakota .....	2,394	2,292	2,434	2,332	2,383	2,401
Texas .....	13,284	14,629	17,669	18,570	2,258	2,299
Utah .....	3,378	3,561	3,408	3,591	2,406	2,256
Virginia .....	951	1,096	2,867	3,015	1,988	1,990
Washington .....	6,627	6,720	6,743	6,835	2,462	2,180
Wisconsin .....	4,016	4,250	4,592	4,849	2,199	2,207
Other States <sup>1</sup> .....	11,782	12,205	20,391	20,189	2,192	2,204
United States .....	274,492	277,778	337,897	338,264	2,300	2,296

<sup>1</sup> Includes data for States not published in this table.

## Egg Production by Type – States and United States: April 2011 and 2012

[Totals may not add due to rounding. Data by type of flock not shown for some States to avoid disclosing individual operations, data included in United States totals]

State	Total production		Table eggs		Hatching eggs	
	2011	2012	2011	2012	2011	2012
	(million eggs)	(million eggs)	(million eggs)	(million eggs)	(million eggs)	(million eggs)
Alabama .....	177	177	31	34	146	143
Arkansas .....	239	243	72	81	167	162
California .....	444	446	(D)	(D)	(D)	(D)
Colorado .....	91	112	(D)	(D)	(D)	(D)
Connecticut .....	53	54	(D)	(D)	(D)	(D)
Florida .....	214	207	208	203	6	4
Georgia .....	361	351	193	185	168	166
Illinois .....	97	99	94	96	3	3
Indiana .....	551	543	538	529	13	14
Iowa .....	1,190	1,185	1,177	1,168	13	17
Maine .....	84	84	(D)	(D)	(D)	(D)
Maryland .....	53	55	51	54	2	1
Michigan .....	258	279	(D)	(D)	(D)	(D)
Minnesota .....	236	225	228	217	8	8
Mississippi .....	122	112	37	34	85	78
Missouri .....	174	159	(D)	(D)	(D)	(D)
Nebraska .....	226	226	226	226	-	-
New York .....	98	106	(D)	(D)	(D)	(D)
North Carolina .....	268	258	135	132	133	126
Ohio .....	622	621	(D)	(D)	(D)	(D)
Oregon .....	57	58	55	56	2	2
Pennsylvania .....	615	574	593	555	22	19
South Carolina .....	95	94	72	73	23	21
South Dakota .....	55	53	55	53	-	-
Texas .....	400	423	(D)	(D)	(D)	(D)
Utah .....	82	80	82	80	-	-
Virginia .....	57	62	24	28	33	34
Washington .....	162	156	(D)	(D)	(D)	(D)
Wisconsin .....	100	109	(D)	(D)	(D)	(D)
Other States <sup>1</sup> .....	436	431	301	310	136	122
United States .....	7,617	7,582	6,534	6,545	1,083	1,038

- Represents zero.

(D) Withheld to avoid disclosing data for individual operations.

<sup>1</sup> Includes data for States not published in this table.

## Egg Production by Type – States and United States: May 2011 and 2012

[Totals may not add due to rounding. Data by type of flock not shown for some States to avoid disclosing individual operations, data included in United States totals]

State	Total production		Table eggs		Hatching eggs	
	2011	2012	2011	2012	2011	2012
	(million eggs)	(million eggs)	(million eggs)	(million eggs)	(million eggs)	(million eggs)
Alabama .....	178	181	31	36	147	145
Arkansas .....	254	257	79	85	175	172
California .....	449	455	(D)	(D)	(D)	(D)
Colorado .....	96	112	(D)	(D)	(D)	(D)
Connecticut .....	55	56	(D)	(D)	(D)	(D)
Florida .....	218	200	212	195	6	5
Georgia .....	354	370	179	197	175	173
Illinois .....	102	103	99	100	3	3
Indiana .....	567	560	553	544	14	16
Iowa .....	1,228	1,231	1,215	1,215	13	16
Maine .....	86	86	(D)	(D)	(D)	(D)
Maryland .....	51	53	49	52	2	1
Michigan .....	255	289	(D)	(D)	(D)	(D)
Minnesota .....	239	237	231	230	8	7
Mississippi .....	125	119	36	36	89	83
Missouri .....	183	165	(D)	(D)	(D)	(D)
Nebraska .....	227	231	227	231	-	-
New York .....	102	110	(D)	109	(D)	1
North Carolina .....	289	264	146	133	143	131
Ohio .....	628	633	(D)	(D)	(D)	8
Oregon .....	56	56	54	55	2	1
Pennsylvania .....	621	579	599	559	22	20
South Carolina .....	100	94	76	72	24	22
South Dakota .....	58	56	58	56	-	-
Texas .....	399	427	(D)	(D)	(D)	69
Utah .....	82	81	82	81	-	-
Virginia .....	57	60	22	24	35	36
Washington .....	166	149	(D)	(D)	(D)	(D)
Wisconsin .....	101	107	(D)	(D)	(D)	(D)
Other States <sup>1</sup> .....	447	445	311	321	137	125
United States .....	7,773	7,766	6,651	6,689	1,123	1,078

- Represents zero.

(D) Withheld to avoid disclosing data for individual operations.

<sup>1</sup> Includes data for States not published in this table.

## Forced Molt as Percent of All Layers by Month – United States: 2011-2012

[As of the first of the month. Blank data cells indicate estimation period has not yet begun]

Month	Being molted		Molt completed	
	2011 (percent)	2012 (percent)	2011 (percent)	2012 (percent)
January .....	2.8	2.8	21.2	19.9
February .....	3.6	4.8	20.2	18.8
March .....	3.0	3.8	20.1	19.9
April .....	2.6	2.8	20.0	19.7
May .....	3.0	4.3	20.0	19.6
June .....	3.8	2.9	19.5	20.2
July .....	3.5		19.6	
August .....	3.6		19.5	
September .....	3.2		20.3	
October .....	3.9		20.4	
November .....	2.5		21.2	
December .....	1.7		21.1	

## Forced Molt as Percent of All Layers – States and United States: June 1, 2011 and 2012

[As of the first of the month]

State	Being molted		Molt completed	
	2011 (percent)	2012 (percent)	2011 (percent)	2012 (percent)
Alabama .....	1.0	0.5	7.0	7.0
Arkansas .....	1.0	1.0	8.5	9.0
California .....	6.5	4.0	23.5	31.5
Colorado .....	-	4.0	15.0	29.0
Connecticut .....	-	-	17.0	17.5
Florida .....	13.0	6.5	29.5	36.0
Georgia .....	5.0	2.5	16.5	10.0
Illinois .....	4.0	-	28.0	19.0
Indiana .....	4.0	3.0	24.5	36.5
Iowa .....	5.0	3.5	35.5	30.5
Maine .....	-	-	-	-
Maryland .....	-	5.0	26.0	10.5
Michigan .....	6.0	3.0	11.5	14.0
Minnesota .....	4.0	6.5	26.5	22.5
Mississippi .....	3.5	-	9.5	12.0
Missouri .....	-	2.0	20.5	22.0
Nebraska .....	-	-	3.0	2.0
New York .....	2.0	4.0	5.5	11.5
North Carolina .....	0.5	2.0	15.5	14.0
Ohio .....	3.0	1.5	17.0	11.5
Oregon .....	7.5	12.0	26.0	30.5
Pennsylvania .....	2.0	1.5	7.5	10.5
South Carolina .....	-	2.0	16.0	15.5
South Dakota .....	4.0	9.5	20.5	25.0
Texas .....	4.0	3.5	16.0	20.5
Utah .....	8.5	5.0	30.5	35.5
Virginia .....	3.0	3.0	2.5	8.5
Washington .....	11.0	10.5	26.0	27.0
Wisconsin .....	2.0	2.0	24.0	23.5
Other States <sup>1</sup> .....	2.6	2.4	15.4	18.1
United States .....	3.8	2.9	19.5	20.2

- Represents zero.

<sup>1</sup> Includes data for States not published in this table.

## Hatchery Production – United States: 2011 and 2012

Item	2011	2012	2012 as percent of 2011
	(1,000)	(1,000)	(percent)
<b>Egg-type</b>			
Eggs in incubators on June 1 .....	37,311	40,320	108
Chicks hatched during May .....	42,949	43,280	101
Chicks hatched January through May .....	207,516	203,181	98
Pullets hatched during May for intended placements:			
Hatchery supply flocks .....	196	302	154
Cumulative potential placements 7-18 months earlier <sup>1</sup> .....	3,054	3,098	101
<b>Broiler-type</b>			
Eggs in incubators on June 1 .....	640,173	626,421	98
Chicks hatched during May .....	804,484	777,636	97
Chicks hatched January through May .....	3,866,150	3,746,541	97
Pullets hatched during May for intended placements:			
Hatchery supply flocks .....	7,721	7,476	97
Cumulative potential placements 7-15 months earlier <sup>2</sup> .....	63,990	62,941	98

<sup>1</sup> 2012 includes pullet chicks hatched November 2010 through October 2011.

<sup>2</sup> 2012 includes pullet chicks hatched February 2011 through October 2011.

## Egg-Type Eggs in Incubators – Regions and United States: June 1, 2011 and 2012

[See regional listing on page 19]

Region	2011	2012	2012 as percent of 2011
	(1,000 eggs)	(1,000 eggs)	(percent)
North Atlantic .....	3,839	4,155	108
East North Central .....	7,746	7,487	97
West North Central .....	9,440	10,335	109
South Atlantic .....	3,447	4,928	143
South Central .....	5,156	6,361	123
West .....	7,683	7,054	92
United States .....	37,311	40,320	108

## Egg-Type Chicks Hatched by Month – United States: 2011-2012

[Blank data cells indicate estimation period has not yet begun]

Month	By months			Cumulative		
	2011	2012	2012 as percent of 2011	2011	2012	2012 as percent of 2011
	(1,000 chicks)	(1,000 chicks)	(percent)	(1,000 chicks)	(1,000 chicks)	(percent)
January .....	40,590	40,277	99	40,590	40,277	99
February .....	37,415	39,300	105	78,005	79,577	102
March .....	43,603	40,622	93	121,608	120,199	99
April .....	42,959	39,702	92	164,567	159,901	97
May .....	42,949	43,280	101	207,516	203,181	98
June .....	38,920			246,436		
July .....	36,950			283,386		
August .....	41,431			324,817		
September .....	39,805			364,622		
October .....	37,624			402,246		
November .....	37,512			439,758		
December .....	39,071			478,829		

## Intended Placements of Egg-Type Pullet Chicks for Hatchery Supply Flocks by Month – United States: 2011-2012

[Blank data cells indicate estimation period has not yet begun]

Month	Pullet chicks hatched		2012 as percent of 2011	Cumulative potential placements relative to current supply flocks 7-18 months earlier <sup>1</sup>	
	2011	2012		2011	2012
	(1,000 chicks)	(1,000 chicks)	(percent)	(1,000 chicks)	(1,000 chicks)
January .....	220	263	120	3,292	2,920
February .....	244	238	98	3,168	2,936
March .....	253	210	83	3,130	3,001
April .....	287	137	48	3,161	3,002
May .....	196	302	154	3,054	3,098
June .....	302			3,027	3,053
July .....	234			2,981	3,067
August .....	318			2,974	3,110
September .....	252			2,922	3,104
October .....	266			2,915	3,061
November .....	218			2,970	2,911
December .....	277			2,936	3,017
Total .....	3,067				

<sup>1</sup> For May 2012, includes breeder pullet chicks hatched November 2010 through October 2011. The 7-18 months represent the first laying cycle. Molting and additional laying cycles will increase the cumulative potential placements.

## Broiler-Type Eggs in Incubators – Regions and United States: June 1, 2011 and 2012

[See regional listing on page 19]

Region	2011	2012	2012 as percent of 2011
	(1,000 eggs)	(1,000 eggs)	(percent)
North Atlantic .....	13,174	13,074	99
East North Central .....	11,943	13,055	109
West North Central .....	27,990	28,981	104
South Atlantic .....	241,609	237,184	98
South Central .....	323,058	312,510	97
West .....	22,399	21,617	97
United States .....	640,173	626,421	98

## Broiler-Type Chicks Hatched – States and United States: May 2011 and 2012

State	During May			January-May		
	2011	2012	2012 as percent of 2011	2011	2012	2012 as percent of 2011
	(1,000 chicks)	(1,000 chicks)	(percent)	(1,000 chicks)	(1,000 chicks)	(percent)
Alabama .....	110,943	106,282	96	544,110	514,074	94
Arkansas .....	88,969	80,628	91	427,603	380,124	89
Delaware .....	14,362	13,362	93	71,409	61,692	86
Florida .....	4,896	4,935	101	23,800	23,740	100
Georgia .....	125,013	120,836	97	598,561	586,262	98
Kentucky .....	29,192	28,446	97	137,567	137,658	100
Louisiana .....	12,589	13,310	106	61,312	63,741	104
Maryland .....	28,831	27,597	96	137,798	134,048	97
Mississippi .....	71,296	68,073	95	344,473	331,462	96
Missouri .....	29,380	28,884	98	142,835	144,290	101
North Carolina .....	76,014	76,181	100	360,331	369,178	102
Oklahoma .....	26,423	25,570	97	126,137	123,184	98
Pennsylvania .....	14,439	13,788	95	69,321	68,255	98
South Carolina .....	19,528	19,916	102	95,938	95,101	99
Texas .....	58,133	55,466	95	277,331	271,442	98
Virginia .....	23,876	23,549	99	112,335	112,582	100
California, Tennessee, and West Virginia .....	44,003	42,076	96	206,834	198,018	96
19 States <sup>1</sup> .....	777,887	748,899	96	3,737,695	3,614,851	97
Other States <sup>2</sup> .....	26,597	28,737	108	128,455	131,690	103
United States .....	804,484	777,636	97	3,866,150	3,746,541	97

<sup>1</sup> States in the weekly hatchery production estimating program.

<sup>2</sup> Not published separately to avoid disclosing data for individual operations.

## Broiler-Type Chicks Hatched by Month – United States: 2011-2012

[Blank data cells indicate estimation period has not yet begun]

Month	By months			Cumulative		
	2011	2012	2012 as percent of 2011	2011	2012	2012 as percent of 2011
	(1,000 chicks)	(1,000 chicks)	(percent)	(1,000 chicks)	(1,000 chicks)	(percent)
January .....	781,313	751,870	96	781,313	751,870	96
February .....	708,722	705,113	99	1,490,035	1,456,983	98
March .....	793,765	764,225	96	2,283,800	2,221,208	97
April .....	777,866	747,697	96	3,061,666	2,968,905	97
May .....	804,484	777,636	97	3,866,150	3,746,541	97
June .....	766,371			4,632,521		
July .....	768,432			5,400,953		
August .....	758,980			6,159,933		
September .....	719,606			6,879,539		
October .....	715,886			7,595,425		
November .....	702,169			8,297,594		
December .....	758,382			9,055,976		



## Intended Placements of Broiler-Type Pullet Chicks for Hatchery Supply Flocks by Month and Total: 2011-2012

[Blank data cells indicate estimation period has not yet begun]

Month	Pullet chicks hatched		2012 as percent of 2011	Cumulative potential placements relative to current supply flocks 7-15 months earlier <sup>1</sup>	
	2011 (1,000 chicks)	2012 (1,000 chicks)		2011 (1,000 chicks)	2012 (1,000 chicks)
<b>United States placements</b>					
January .....	6,557	6,673	102	62,996	64,111
February .....	7,284	7,025	96	63,283	63,679
March .....	7,058	6,753	96	63,250	63,323
April .....	7,044	6,524	93	63,751	63,209
May .....	7,721	7,476	97	63,990	62,941
June .....	7,211			64,558	62,547
July .....	6,444			64,656	61,927
August .....	7,233			64,388	61,556
September .....	6,657			63,321	60,860
October .....	6,289			63,251	60,402
November .....	6,890			63,620	60,482
December .....	6,438			64,028	60,725
Annual total .....	82,826				
<b>Total placements <sup>2</sup></b>					
January .....	8,187	8,201	100		
February .....	8,931	8,818	99		
March .....	9,023	8,525	94		
April .....	8,944	8,232	92		
May .....	9,612	9,047	94		
June .....	9,225				
July .....	8,131				
August .....	8,700				
September .....	8,546				
October .....	7,938				
November .....	8,489				
December .....	8,279				
Annual total .....	104,005				

<sup>1</sup> For May 2012, includes breeder pullet chicks hatched February 2011 through October 2011.

<sup>2</sup> United States production of intended placements worldwide.

## Statistical Methodology

**Survey Procedures:** Primary data for the *Chickens and Eggs* report are from weekly and/or monthly questionnaires sent to producers. An attempt is made to collect information for layer and egg estimates from each known contractor and independent producer who has at least 30,000 table egg layers, flocks of hatchery supply layers, or pullet only operations with at least 500 pullets. Coverage for operations with less than 30,000 table egg layers are estimated each month based on data reported in December. Approximately 650 contractors, independent egg producers, and pullet only operations are contacted each month. All known hatcheries, approximately 300, are contacted for information on a weekly and/or monthly basis.

**Estimating Procedures:** Sound statistical methodology is employed to derive estimates from the reported data. All data are analyzed for unusual values. Data from each operation are compared to their own past operating profile and to trends from similar operations. Data for missing operations are estimated based on similar operations or historical data. NASS field offices prepare these estimates by using a combination of survey indications and historic trends. Individual State estimates are reviewed by the Agricultural Statistics Board for reasonableness. Individual hatchery data are summed to State, regional, and United States totals.

For chicken hatcheries, chicks hatched consist of all chicks of domesticated breeds including males and chicks destined for hatchery supply flocks and research purposes. Eggs set are eggs in incubators for the purpose of hatching. The relationship of egg-type chicks hatched to chicken inventory and poultry marketings are carefully monitored. The disposition of egg-type chicks hatched prior to placement into the laying flock can vary significantly, which can make comparisons to changes in layer inventory inconsistent over time. Broiler chicks placed are specifically placed on feed for meat production. Intended placement data reported by leading breeders include pullet chicks expected from eggs sold the preceding month. The breeders in this report account for a large percentage of replacement pullets for hatchery supply flocks. Production of replacement pullets by these breeders indicates the number of pullets available to hatchery supply layer flocks several months before the pullets will actually move into the laying flocks. "Hatchery Supply Flocks" include all generations of layers which could lay eggs to supply a hatchery. This includes the generations of parents, grandparents, great-grandparents, pedigree, etc. Also included are research flocks, vaccine flocks, and specific pathogen-free flocks. The broiler cumulative potential placements are a moving total of the intended placements 7-15 months earlier. The egg-type cumulative potential placements of 7-18 months earlier represent the first laying cycle. Molting and additional laying cycles will increase the cumulative potential placements of egg-type hatching flocks.

**Revision Policy:** The previous month's estimates are subject to revision if late reports or corrected data indicates a different level. Additionally, revisions after the monthly report will be made at the end of the marketing year and published in the annual reports of *Chickens and Eggs Summary* and *Hatchery Production Summary*. Estimates will also be reviewed for chickens and eggs after data from the 5-year Census of Agriculture are available. No revisions will be made after that date.

**Reliability:** Estimates are based on a census of all known contractors and independent producers who have at least 30,000 table egg layers, flocks of hatchery supply layers, pullet only operations with at least 500 pullets, or operating hatcheries and therefore, have no sampling error. However, estimates are subject to errors such as omission, duplication, and mistakes in reporting, recording, and processing the data. While these errors cannot be measured directly, they are minimized through strict quality controls in the data collection process and a careful review of all reported data for consistency and reasonableness.

To assist in evaluating the reliability of the estimates in this report, the "Root Mean Square Error" is shown for selected items in the following table. The "Root Mean Square Error" is a statistical measure based on past performance and is computed using the differences between first and final estimates. The "Root Mean Square Error" for all layers over the past 24 months is 0.3 percent. This means that chances are 2 out of 3 that the final estimate will not be above or below the current estimate of 338 million layers by more than 0.3 percent. Chances are 9 out of 10 that the difference will not exceed 0.5 percent.

## Reliability of Layer and Egg Estimates

[Based on data for the past twenty-four months]

Item	Root mean square error	90 percent confidence level	Difference between first and latest estimate				
			Average	Smallest	Largest	Months	
						Below latest	Above latest
All layers .....	(percent) 0.3	(percent) 0.5	(1,000) 708	(1,000) 25	(1,000) 1,904	(number) 17	(number) 7
Eggs .....	0.3	0.5	(million) 15	(million) 1	(million) 39	18	6

## Regional Listing

- North Atlantic:** Connecticut, Maine, Massachusetts, New Hampshire, New Jersey, New York, Pennsylvania, Rhode Island, Vermont.
- East North Central:** Illinois, Indiana, Michigan, Ohio, Wisconsin.
- West North Central:** Iowa, Kansas, Minnesota, Missouri, Nebraska, North Dakota, South Dakota.
- South Atlantic:** Delaware, Florida, Georgia, Maryland, North Carolina, South Carolina, Virginia, West Virginia.
- South Central:** Alabama, Arkansas, Kentucky, Louisiana, Mississippi, Oklahoma, Tennessee, Texas.
- West:** Alaska, Arizona, California, Colorado, Hawaii, Idaho, Montana, New Mexico, Nevada, Oregon, Utah, Washington, Wyoming.

## Terms and Definitions of Chickens and Eggs Estimates

**All Layers** includes both table egg and hatching egg flocks regardless of size.

**Intended Placements** are reported by leading breeders. Coverage may not be 100 percent. Includes expected pullet chicks from eggs sold during the preceding month at the rate of 125 pullet chicks per case of 30 dozen eggs.

## Information Contacts

Listed below are the commodity specialists in the Livestock Branch of the National Agricultural Statistics Service to contact for additional information. E-mail inquiries may be sent to [nass@nass.usda.gov](mailto:nass@nass.usda.gov)

- Dan Kerestes, Chief, Livestock Branch ..... (202) 720-3570
- Bruce Boess, Head, Poultry and Specialty Commodities Section ..... (202) 720-4447
- Cody Brokmeyer – Poultry Slaughter, Turkey Hatchery, Turkeys Raised ..... (202) 690-3237
- David Colwell – Cold Storage ..... (202) 720-8784
- LaKeya Jones – Catfish Processing, Catfish Production, Trout Production,  
    Census of Aquaculture, Honey, Egg Products, Mink ..... (202) 720-0585
- Kim Linonis – Layers, Eggs ..... (202) 690-8632
- Miste Salmon – Broiler Hatchery, Chicken Hatchery ..... (202) 720-3244

## Access to NASS Reports

For your convenience, you may access NASS reports and products the following ways:

- All reports are available electronically, at no cost, on the NASS web site: <http://www.nass.usda.gov>
- Both national and state specific reports are available via a free e-mail subscription. To set-up this free subscription, visit <http://www.nass.usda.gov> and in the “Follow NASS” box under “Receive reports by Email,” click on “National” or “State” to select the reports you would like to receive.
- Printed reports may be purchased from the National Technical Information Service (NTIS) by calling toll-free (800) 999-6779, or (703) 605-6220 if calling from outside the United States or Canada. Accepted methods of payment are Visa, MasterCard, check, or money order.

For more information on NASS surveys and reports, call the NASS Agricultural Statistics Hotline at (800) 727-9540, 7:30 a.m. to 4:00 p.m. ET, or e-mail: [nass@nass.usda.gov](mailto:nass@nass.usda.gov).

The United States Department of Agriculture (USDA) prohibits discrimination in all its programs and activities on the basis of race, color, national origin, age, disability, and where applicable, sex, marital status, familial status, parental status, religion, sexual orientation, political beliefs, genetic information, reprisal, or because all or a part of an individual's income is derived from any public assistance program. (Not all prohibited bases apply to all programs.) Persons with disabilities who require alternative means for communication of program information (Braille, large print, audiotape, etc.) should contact USDA's TARGET Center at (202) 720-2600 (voice and TDD).

To file a complaint of discrimination, write to USDA, Assistant Secretary for Civil Rights, Office of the Assistant Secretary for Civil Rights, 1400 Independence Avenue, S.W., Stop 9410, Washington, DC 20250-9410, or call toll-free at (866) 632-9992 (English) or (800) 877-8339 (TDD) or (866) 377-8642 (English Federal-relay) or (800) 845-6136 (Spanish Federal-relay). USDA is an equal opportunity provider and employer.