



# Chickens and Eggs

ISSN: 1948-9064

---

Released July 23, 2012, by the National Agricultural Statistics Service (NASS), Agricultural Statistics Board, United States Department of Agriculture (USDA).

## June Egg Production Down Slightly

United States egg production totaled 7.50 billion during June 2012, down slightly from last year. Production included 6.47 billion table eggs, and 1.03 billion hatching eggs, of which 965 million were broiler-type and 68 million were egg-type. The total number of layers during June 2012 averaged 337 million, up slightly from last year. June egg production per 100 layers was 2,227 eggs, down slightly from June 2011.

All layers in the United States on July 1, 2012 totaled 335 million, down slightly from last year. The 335 million layers consisted of 281 million layers producing table or market type eggs, 51.6 million layers producing broiler-type hatching eggs, and 2.81 million layers producing egg-type hatching eggs. Rate of lay per day on July 1, 2012, averaged 73.9 eggs per 100 layers, down 1 percent from July 1, 2011.

## Egg-Type Chicks Hatched Up 1 Percent

Egg-type chicks hatched during June 2012 totaled 39.4 million, up 1 percent from June 2011. Eggs in incubators totaled 34.2 million on July 1, 2012, down 1 percent from a year ago.

Domestic placements of egg-type pullet chicks for future hatchery supply flocks by leading breeders totaled 119 thousand during June 2012, down 61 percent from June 2011.

## Broiler-Type Chicks Hatched Down 1 Percent

Broiler-type chicks hatched during June 2012 totaled 756 million, down 1 percent from June 2011. Eggs in incubators totaled 612 million on July 1, 2012, down 1 percent from a year earlier.

Leading breeders placed 6.80 million broiler-type pullet chicks for future domestic hatchery supply flocks during June 2012, down 6 percent from June 2011.

**This page intentionally left blank.**

## Contents

Average Number of All Layers on Hand During the Month – United States: 2011-2012.....	4
Egg Production During the Month by Type – United States: 2011-2012.....	4
Average Number of Layers During the Month – United States.....	5
All Egg Production During the Month – United States .....	5
Layers on Hand and Eggs Produced by Type and Forced Molt – United States: May-June 2011 and 2012 .....	6
Layers on Hand and Eggs Produced by Type and Forced Molt – United States: June-July 2011 and 2012 .....	7
Layers on Hand and Eggs Produced – States and United States: During May 2011 and 2012 .....	8
Layers on Hand and Eggs Produced – States and United States: During June 2011 and 2012 .....	9
Egg Production by Type – States and United States: May 2011 and 2012.....	10
Egg Production by Type – States and United States: June 2011 and 2012.....	11
Forced Molt as Percent of All Layers by Month – United States: 2011-2012.....	12
Forced Molt as Percent of All Layers – States and United States: July 1, 2011 and 2012 .....	12
Hatchery Production – United States: 2011 and 2012 .....	13
Egg-Type Eggs in Incubators – Regions and United States: July 1, 2011 and 2012 .....	14
Egg-Type Chicks Hatched by Month – United States: 2011-2012.....	14
Intended Placements of Egg-Type Pullet Chicks for Hatchery Supply Flocks by Month – United States: 2011-2012.....	15
Broiler-Type Eggs in Incubators – Regions and United States: July 1, 2011 and 2012 .....	15
Broiler-Type Chicks Hatched – States and United States: June 2011 and 2012.....	16
Broiler-Type Chicks Hatched by Month – United States: 2011-2012.....	16
Intended Placements of Broiler-Type Pullet Chicks for Hatchery Supply Flocks by Month and Total: 2011-2012.....	17
Statistical Methodology .....	18
Regional Listing.....	19
Terms and Definitions of Chickens and Eggs Estimates .....	19
Information Contacts .....	19

## Average Number of All Layers on Hand During the Month – United States: 2011-2012

[Blank data cells indicate estimation period has not yet begun]

Month	2011		2012	
	(1,000 layers)		(1,000 layers)	
December <sup>1</sup> .....		343,083		338,158
January .....		342,266		337,618
February .....		339,787		338,151
March .....		340,655		339,626
April .....		340,896		339,517
May .....		337,897		338,447
June .....		336,411		336,862
July .....		335,799		
August .....		335,412		
September .....		335,328		
October .....		335,884		
November .....		337,716		

<sup>1</sup> December preceding year.

## Egg Production During the Month by Type – United States: 2011-2012

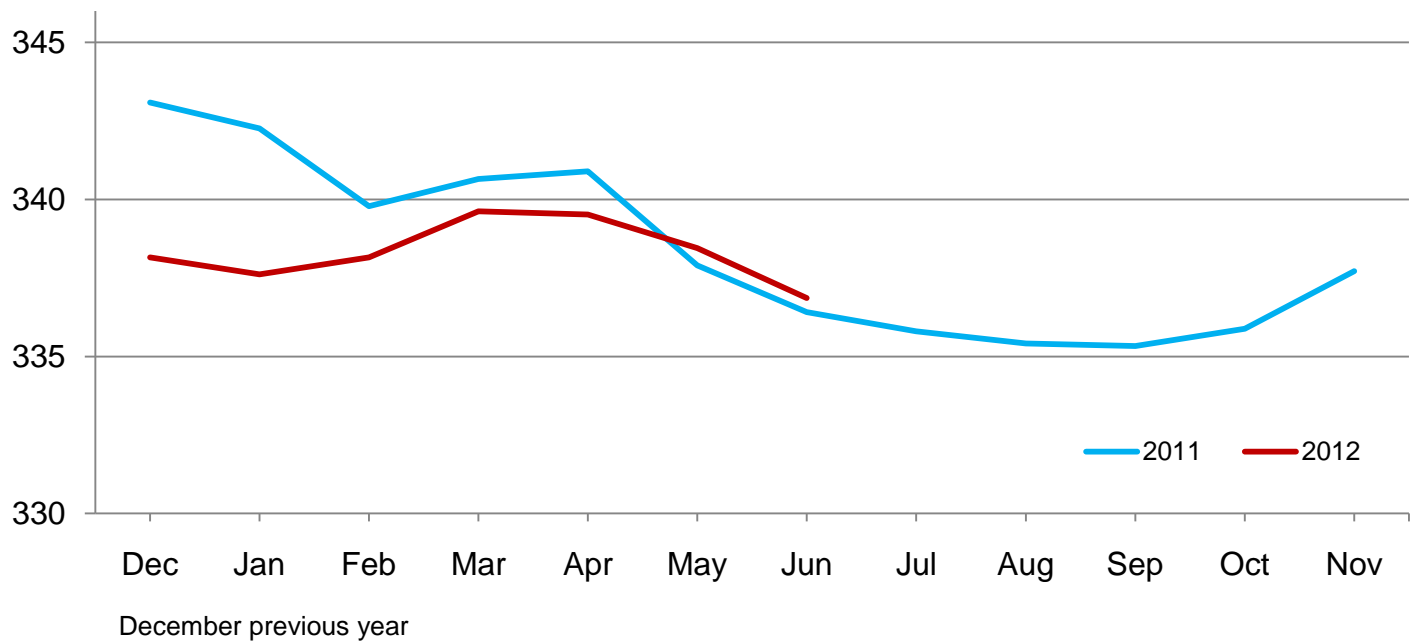
[Totals may not add due to rounding. Blank data cells indicate estimation period has not yet begun]

Month	Total eggs		Table eggs		Hatching eggs	
	2011	2012	2011	2012	2011	2012
	(million eggs)	(million eggs)	(million eggs)	(million eggs)	(million eggs)	(million eggs)
December <sup>1</sup> .....	7,927	7,932	6,845	6,894	1,083	1,038
January .....	7,833	7,831	6,736	6,786	1,098	1,046
February .....	7,013	7,235	6,022	6,247	990	987
March .....	7,840	7,859	6,735	6,800	1,106	1,059
April .....	7,617	7,582	6,534	6,545	1,083	1,038
May .....	7,773	7,770	6,651	6,693	1,123	1,078
June .....	7,503	7,502	6,421	6,470	1,083	1,033
July .....	7,732		6,633		1,100	
August .....	7,719		6,644		1,076	
September .....	7,503		6,476		1,028	
October .....	7,783		6,734		1,050	
November .....	7,612		6,605		1,007	
During year .....	91,855		79,036		12,827	

<sup>1</sup> December preceding year.

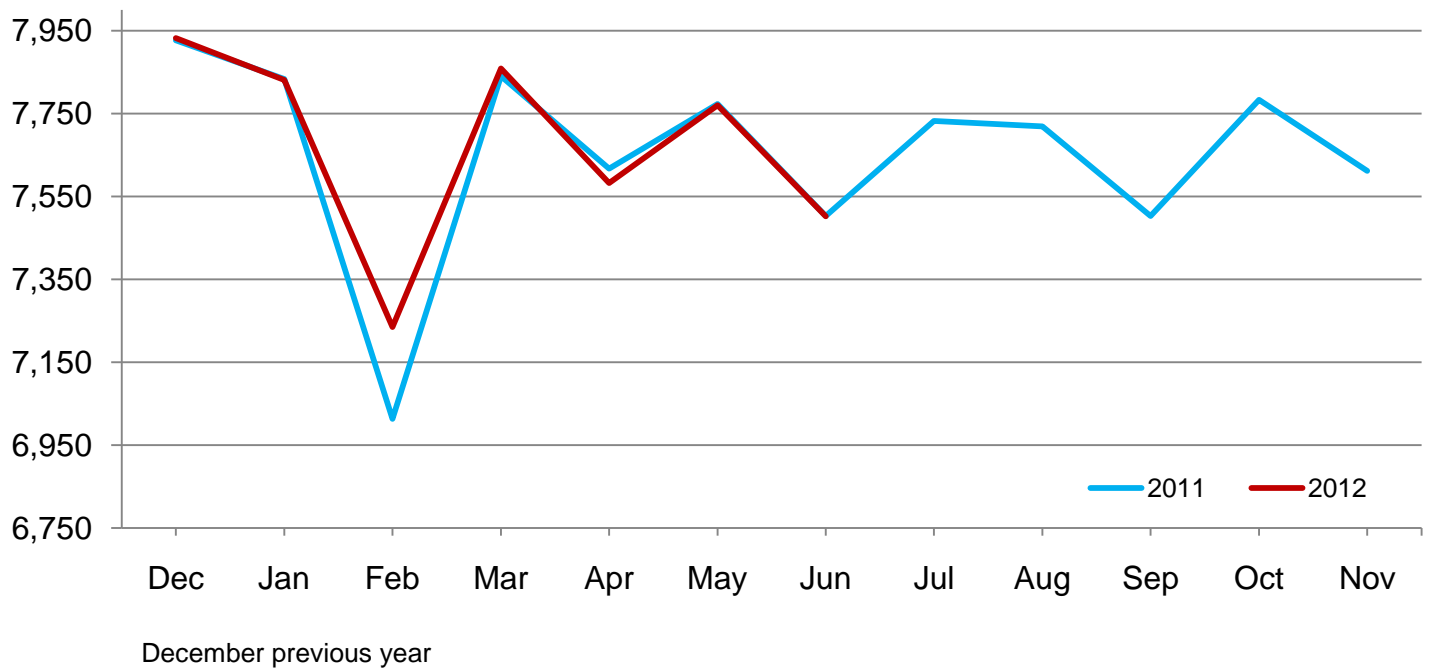
## Average Layers During the Month – United States

Million layers



## All Egg Production During the Month – United States

Million eggs



**Layers on Hand and Eggs Produced by Type and Forced Molt – United States:  
May-June 2011 and 2012**

[Totals may not add due to rounding]

Item	2011	2012	2012 as percent of 2011
<b>Layers during May</b>			
All layers ..... 1,000	337,897	338,447	100
Table egg type ..... 1,000	279,052	282,564	101
Hatching egg type ..... 1,000	58,845	55,883	95
Broiler-type hatching ..... 1,000	55,873	52,913	95
Egg-type hatching ..... 1,000	2,972	2,970	100
<b>Eggs per 100 layers during May</b>			
All layers ..... number	2,300	2,296	100
Table egg type ..... number	2,383	2,369	99
Hatching egg type ..... number	1,908	1,929	101
Broiler-type hatching ..... number	1,879	1,899	101
Egg-type hatching ..... number	2,456	2,458	100
<b>Eggs produced during May</b>			
All layers ..... million	7,773	7,770	100
Table egg type ..... million	6,651	6,693	101
Hatching egg type ..... million	1,123	1,078	96
Broiler-type hatching ..... million	1,050	1,005	96
Egg-type hatching ..... million	73	73	100
<b>Layers on June 1</b>			
All layers ..... 1,000	336,232	338,206	101
Table egg type ..... 1,000	277,646	282,382	102
Hatching egg type ..... 1,000	58,586	55,824	95
Broiler-type hatching ..... 1,000	55,571	52,869	95
Egg-type hatching ..... 1,000	3,015	2,955	98
<b>Eggs per 100 layers on June 1</b>			
All layers ..... number	74.1	74.4	100
Table egg type ..... number	76.7	76.8	100
Hatching egg type ..... number	61.7	62.2	101
Broiler-type hatching ..... number	60.7	61.3	101
Egg-type hatching ..... number	80.5	78.1	97
<b>Forced molt layers on June 1</b>			
Being molted ..... percent	3.8	2.9	76
Molt completed ..... percent	19.5	20.3	104
Layers sold for slaughter during May ..... 1,000	14,951	14,839	99
Layers rendered, died, destroyed, composted or disappeared for any reason during May ..... 1,000	9,144	8,562	94
Pullets on June 1 ..... 1,000	107,205	105,626	99
Pullets added during May <sup>1</sup> ..... 1,000	23,467	25,540	109

<sup>1</sup> Pullet chicks less than 3 days old added to pullet flocks.

## Layers on Hand and Eggs Produced by Type and Forced Molt – United States: June-July 2011 and 2012

[Totals may not add due to rounding]

Item	2011	2012	2012 as percent of 2011
<b>Layers during June</b>			
All layers ..... 1,000	336,411	336,862	100
Table egg type ..... 1,000	278,225	281,740	101
Hatching egg type ..... 1,000	58,186	55,122	95
Broiler-type hatching ..... 1,000	55,262	52,237	95
Egg-type hatching ..... 1,000	2,924	2,885	99
<b>Eggs per 100 layers during June</b>			
All layers ..... number	2,230	2,227	100
Table egg type ..... number	2,308	2,296	99
Hatching egg type ..... number	1,861	1,874	101
Broiler-type hatching ..... number	1,833	1,847	101
Egg-type hatching ..... number	2,394	2,357	98
<b>Eggs produced during June</b>			
All layers ..... million	7,503	7,502	100
Table egg type ..... million	6,421	6,470	101
Hatching egg type ..... million	1,083	1,033	95
Broiler-type hatching ..... million	1,013	965	95
Egg-type hatching ..... million	70	68	97
<b>Layers on July 1</b>			
All layers ..... 1,000	336,559	335,483	100
Table egg type ..... 1,000	278,788	281,082	101
Hatching egg type ..... 1,000	57,771	54,401	94
Broiler-type hatching ..... 1,000	54,945	51,593	94
Egg-type hatching ..... 1,000	2,826	2,808	99
<b>Eggs per 100 layers on July 1</b>			
All layers ..... number	74.5	73.9	99
Table egg type ..... number	77.1	76.1	99
Hatching egg type ..... number	61.8	62.5	101
Broiler-type hatching ..... number	60.8	61.6	101
Egg-type hatching ..... number	80.0	77.8	97
<b>Forced molt layers on July 1</b>			
Being molted ..... percent	3.5	2.8	80
Molt completed ..... percent	19.6	20.4	104
Layers sold for slaughter during June ..... 1,000	13,311	15,380	116
Layers rendered, died, destroyed, composted or disappeared for any reason during June ..... 1,000	8,236	8,489	103
Pullets on July 1 ..... 1,000	106,502	107,099	101
Pullets added during June <sup>1</sup> ..... 1,000	22,694	23,643	104

<sup>1</sup> Pullet chicks less than 3 days old added to pullet flocks.

## Layers on Hand and Eggs Produced – States and United States: During May 2011 and 2012

State	Table egg layers in flocks 30,000 and above		All layers		Eggs per 100 for all layers	
	2011	2012	2011	2012	2011	2012
	(1,000 layers)	(1,000 layers)	(1,000 layers)	(1,000 layers)	(eggs)	(eggs)
Alabama .....	1,318	1,528	9,417	9,311	1,890	1,944
Arkansas .....	3,199	3,518	12,439	12,436	2,042	2,067
California .....	18,766	19,439	19,069	19,785	2,355	2,300
Colorado .....	3,493	4,023	3,943	4,503	2,435	2,487
Connecticut .....	2,191	2,230	2,261	2,297	2,433	2,438
Florida .....	9,143	8,204	9,508	8,517	2,293	2,348
Georgia .....	7,509	8,104	16,569	16,878	2,137	2,192
Illinois .....	4,168	4,203	4,393	4,410	2,322	2,336
Indiana .....	22,568	23,323	23,321	24,154	2,431	2,335
Iowa .....	52,095	50,960	52,921	51,894	2,320	2,372
Maine .....	3,493	3,465	3,548	3,520	2,424	2,443
Maryland .....	1,930	2,188	2,068	2,303	2,466	2,301
Michigan .....	10,188	11,473	10,352	11,623	2,463	2,486
Minnesota .....	9,737	9,738	10,226	10,186	2,337	2,327
Mississippi .....	1,474	1,459	6,129	5,748	2,039	2,070
Missouri .....	6,012	5,335	7,618	6,898	2,402	2,392
Nebraska .....	9,109	9,116	9,159	9,166	2,478	2,520
New York .....	3,858	4,228	4,086	4,456	2,496	2,469
North Carolina .....	5,884	5,747	13,590	12,947	2,127	2,039
Ohio .....	26,812	27,093	27,346	27,632	2,296	2,291
Oregon .....	2,152	2,104	2,306	2,223	2,428	2,519
Pennsylvania .....	23,858	22,761	25,078	23,925	2,476	2,420
South Carolina .....	3,103	2,969	4,446	4,254	2,249	2,210
South Dakota .....	2,394	2,292	2,434	2,332	2,383	2,401
Texas .....	13,284	14,629	17,669	18,570	2,258	2,299
Utah .....	3,378	3,561	3,408	3,591	2,406	2,256
Virginia .....	951	1,096	2,867	3,015	1,988	1,990
Washington .....	6,627	6,720	6,743	6,835	2,462	2,180
Wisconsin .....	4,016	4,250	4,592	4,849	2,199	2,207
Other States <sup>1</sup> .....	11,782	12,205	20,391	20,189	2,192	2,204
United States .....	274,492	277,961	337,897	338,447	2,300	2,296

<sup>1</sup> Includes data for States not published in this table.



## Layers on Hand and Eggs Produced – States and United States: During June 2011 and 2012

State	Table egg layers in flocks 30,000 and above		All layers		Eggs per 100 for all layers	
	2011	2012	2011	2012	2011	2012
	(1,000 layers)	(1,000 layers)	(1,000 layers)	(1,000 layers)	(eggs)	(eggs)
Alabama .....	1,279	1,542	9,181	9,173	1,852	1,908
Arkansas .....	3,446	3,593	12,496	12,407	2,033	2,031
California .....	18,760	19,274	19,061	19,623	2,251	2,273
Colorado .....	3,611	3,791	4,042	4,240	2,400	2,382
Connecticut .....	2,200	2,242	2,271	2,309	2,334	2,339
Florida .....	9,037	8,089	9,416	8,415	2,230	2,222
Georgia .....	7,401	8,139	16,318	16,766	2,059	2,111
Illinois .....	4,119	4,213	4,339	4,441	2,374	2,252
Indiana .....	22,446	23,496	23,147	24,276	2,346	2,294
Iowa .....	51,866	50,897	52,714	51,833	2,254	2,286
Maine .....	3,467	3,438	3,522	3,493	2,328	2,319
Maryland .....	1,807	2,176	1,942	2,295	2,369	2,222
Michigan .....	10,133	11,306	10,287	11,456	2,352	2,427
Minnesota .....	9,637	9,807	10,133	10,246	2,280	2,284
Mississippi .....	1,466	1,461	6,119	5,787	1,994	2,022
Missouri .....	5,777	5,392	7,380	6,901	2,331	2,304
Nebraska .....	9,094	9,107	9,144	9,157	2,373	2,435
New York .....	3,985	4,259	4,218	4,491	2,418	2,405
North Carolina .....	5,783	5,646	13,575	12,890	2,041	1,971
Ohio .....	27,000	26,774	27,504	27,305	2,225	2,208
Oregon .....	2,189	1,937	2,332	2,076	2,273	2,457
Pennsylvania .....	23,398	22,609	24,613	23,722	2,434	2,361
South Carolina .....	3,181	2,999	4,529	4,273	2,142	2,059
South Dakota .....	2,349	2,051	2,389	2,091	2,428	2,439
Texas .....	13,322	14,834	17,602	18,663	2,204	2,186
Utah .....	3,403	3,665	3,433	3,695	2,272	2,219
Virginia .....	967	1,107	2,899	2,983	1,932	1,944
Washington .....	6,630	6,701	6,745	6,816	2,328	2,215
Wisconsin .....	4,111	4,424	4,682	5,030	2,093	2,167
Other States <sup>1</sup> .....	11,801	12,168	20,378	20,009	2,125	2,124
United States .....	273,665	277,137	336,411	336,862	2,230	2,227

<sup>1</sup> Includes data for States not published in this table.

## Egg Production by Type – States and United States: May 2011 and 2012

[Totals may not add due to rounding. Data by type of flock not shown for some States to avoid disclosing individual operations, data included in United States totals]

State	Total production		Table eggs		Hatching eggs	
	2011	2012	2011	2012	2011	2012
	(million eggs)	(million eggs)	(million eggs)	(million eggs)	(million eggs)	(million eggs)
Alabama .....	178	181	31	36	147	145
Arkansas .....	254	257	79	85	175	172
California .....	449	455	(D)	(D)	(D)	(D)
Colorado .....	96	112	(D)	(D)	(D)	(D)
Connecticut .....	55	56	(D)	(D)	(D)	(D)
Florida .....	218	200	212	195	6	5
Georgia .....	354	370	179	197	175	173
Illinois .....	102	103	99	100	3	3
Indiana .....	567	564	553	548	14	16
Iowa .....	1,228	1,231	1,215	1,215	13	16
Maine .....	86	86	(D)	(D)	(D)	(D)
Maryland .....	51	53	49	52	2	1
Michigan .....	255	289	(D)	(D)	(D)	(D)
Minnesota .....	239	237	231	230	8	7
Mississippi .....	125	119	36	36	89	83
Missouri .....	183	165	(D)	(D)	(D)	(D)
Nebraska .....	227	231	227	231	-	-
New York .....	102	110	(D)	(D)	(D)	(D)
North Carolina .....	289	264	146	133	143	131
Ohio .....	628	633	(D)	(D)	(D)	(D)
Oregon .....	56	56	54	55	2	1
Pennsylvania .....	621	579	599	559	22	20
South Carolina .....	100	94	76	72	24	22
South Dakota .....	58	56	58	56	-	-
Texas .....	399	427	(D)	(D)	(D)	(D)
Utah .....	82	81	82	81	-	-
Virginia .....	57	60	22	24	35	36
Washington .....	166	149	(D)	(D)	(D)	(D)
Wisconsin .....	101	107	(D)	(D)	(D)	(D)
Other States <sup>1</sup> .....	447	445	311	321	137	125
United States .....	7,773	7,770	6,651	6,693	1,123	1,078

- Represents zero.

(D) Withheld to avoid disclosing data for individual operations.

<sup>1</sup> Includes data for States not published in this table.

## Egg Production by Type – States and United States: June 2011 and 2012

[Totals may not add due to rounding. Data by type of flock not shown for some States to avoid disclosing individual operations, data included in United States totals]

State	Total production		Table eggs		Hatching eggs	
	2011	2012	2011	2012	2011	2012
	(million eggs)	(million eggs)	(million eggs)	(million eggs)	(million eggs)	(million eggs)
Alabama .....	170	175	31	37	139	138
Arkansas .....	254	252	82	85	172	167
California .....	429	446	(D)	(D)	(D)	(D)
Colorado .....	97	101	(D)	(D)	(D)	(D)
Connecticut .....	53	54	(D)	(D)	(D)	(D)
Florida .....	210	187	204	182	6	5
Georgia .....	336	354	169	190	167	164
Illinois .....	103	100	100	97	3	3
Indiana .....	543	557	531	542	12	15
Iowa .....	1,188	1,185	1,175	1,171	13	14
Maine .....	82	81	(D)	(D)	(D)	(D)
Maryland .....	46	51	44	50	2	1
Michigan .....	242	278	(D)	(D)	(D)	(D)
Minnesota .....	231	234	223	227	8	7
Mississippi .....	122	117	36	36	86	81
Missouri .....	172	159	(D)	(D)	(D)	(D)
Nebraska .....	217	223	217	223	-	-
New York .....	102	108	(D)	(D)	(D)	(D)
North Carolina .....	277	254	140	128	137	126
Ohio .....	612	603	(D)	(D)	(D)	(D)
Oregon .....	53	51	51	49	2	2
Pennsylvania .....	599	560	578	542	21	18
South Carolina .....	97	88	74	66	23	22
South Dakota .....	58	51	58	51	-	-
Texas .....	388	408	(D)	(D)	(D)	(D)
Utah .....	78	82	78	82	-	-
Virginia .....	56	58	21	24	35	34
Washington .....	157	151	(D)	(D)	(D)	(D)
Wisconsin .....	98	109	(D)	(D)	(D)	(D)
Other States <sup>1</sup> .....	433	425	300	306	134	120
United States .....	7,503	7,502	6,421	6,470	1,083	1,033

- Represents zero.

(D) Withheld to avoid disclosing data for individual operations.

<sup>1</sup> Includes data for States not published in this table.

## Forced Molt as Percent of All Layers by Month – United States: 2011-2012

[As of the first of the month. Blank data cells indicate estimation period has not yet begun]

Month	Being molted		Molt completed	
	2011 (percent)	2012 (percent)	2011 (percent)	2012 (percent)
January .....	2.8	2.8	21.2	19.9
February .....	3.6	4.8	20.2	18.8
March .....	3.0	3.8	20.1	19.9
April .....	2.6	2.8	20.0	19.7
May .....	3.0	4.3	20.0	19.6
June .....	3.8	2.9	19.5	20.3
July .....	3.5	2.8	19.6	20.4
August .....	3.6		19.5	
September .....	3.2		20.3	
October .....	3.9		20.4	
November .....	2.5		21.2	
December .....	1.7		21.1	

## Forced Molt as Percent of All Layers – States and United States: July 1, 2011 and 2012

[As of the first of the month]

State	Being molted		Molt completed	
	2011 (percent)	2012 (percent)	2011 (percent)	2012 (percent)
Alabama .....	-	0.5	8.5	6.0
Arkansas .....	1.5	1.5	8.5	10.5
California .....	6.5	3.5	28.0	31.5
Colorado .....	9.0	8.0	12.0	31.5
Connecticut .....	-	-	16.5	16.5
Florida .....	5.5	7.0	33.5	37.5
Georgia .....	3.0	1.0	18.0	11.0
Illinois .....	-	1.5	29.0	17.0
Indiana .....	2.5	4.5	25.0	33.0
Iowa .....	5.5	2.5	34.5	30.5
Maine .....	-	-	-	-
Maryland .....	2.5	5.5	19.5	6.0
Michigan .....	1.5	2.5	13.0	13.5
Minnesota .....	4.5	4.5	21.0	24.5
Mississippi .....	1.0	2.0	11.0	10.0
Missouri .....	1.5	2.5	18.0	23.0
Nebraska .....	-	-	3.0	1.5
New York .....	3.0	4.0	5.5	14.5
North Carolina .....	0.5	2.0	14.0	15.0
Ohio .....	3.5	4.0	14.0	9.5
Oregon .....	12.0	4.5	28.0	29.0
Pennsylvania .....	2.5	1.5	8.5	10.5
South Carolina .....	2.5	-	16.0	16.5
South Dakota .....	4.0	10.0	17.0	32.5
Texas .....	3.5	3.5	19.5	24.0
Utah .....	8.0	5.5	34.5	39.0
Virginia .....	5.5	-	2.5	11.0
Washington .....	6.0	3.0	27.5	34.5
Wisconsin .....	5.5	-	26.0	22.0
Other States <sup>1</sup> .....	2.7	2.8	14.4	18.3
United States .....	3.5	2.8	19.6	20.4

- Represents zero.

<sup>1</sup> Includes data for States not published in this table.

## Hatchery Production – United States: 2011 and 2012

Item	2011	2012	2012 as percent of 2011
	(1,000)	(1,000)	(percent)
<b>Egg-type</b>			
Eggs in incubators on July 1 .....	34,606	34,193	99
Chicks hatched during June .....	38,920	39,410	101
Chicks hatched January through June .....	246,436	242,591	98
<b>Pullets hatched during June for intended placements:</b>			
Hatchery supply flocks .....	302	119	39
Cumulative potential placements 7-18 months earlier <sup>1</sup> .....	3,027	3,053	101
<b>Broiler-type</b>			
Eggs in incubators on July 1 .....	619,154	611,978	99
Chicks hatched during June .....	766,371	756,316	99
Chicks hatched January through June .....	4,632,521	4,502,857	97
<b>Pullets hatched during June for intended placements:</b>			
Hatchery supply flocks .....	7,211	6,800	94
Cumulative potential placements 7-15 months earlier <sup>2</sup> .....	64,558	62,547	97

<sup>1</sup> 2012 includes pullet chicks hatched December 2010 through November 2011.

<sup>2</sup> 2012 includes pullet chicks hatched March 2011 through November 2011.

## Egg-Type Eggs in Incubators – Regions and United States: July 1, 2011 and 2012

[See regional listing on page 19]

Region	2011	2012	2012 as percent of 2011
	(1,000 eggs)	(1,000 eggs)	(percent)
North Atlantic .....	4,890	2,897	59
East North Central .....	5,778	6,761	117
West North Central .....	8,889	7,472	84
South Atlantic .....	3,959	3,581	90
South Central .....	3,850	6,249	162
West .....	7,240	7,233	100
United States .....	34,606	34,193	99

## Egg-Type Chicks Hatched by Month – United States: 2011-2012

[Blank data cells indicate estimation period has not yet begun]

Month	By months			Cumulative		
	2011	2012	2012 as percent of 2011	2011	2012	2012 as percent of 2011
	(1,000 chicks)	(1,000 chicks)	(percent)	(1,000 chicks)	(1,000 chicks)	(percent)
January .....	40,590	40,277	99	40,590	40,277	99
February .....	37,415	39,300	105	78,005	79,577	102
March .....	43,603	40,622	93	121,608	120,199	99
April .....	42,959	39,702	92	164,567	159,901	97
May .....	42,949	43,280	101	207,516	203,181	98
June .....	38,920	39,410	101	246,436	242,591	98
July .....	36,950			283,386		
August .....	41,431			324,817		
September .....	39,805			364,622		
October .....	37,624			402,246		
November .....	37,512			439,758		
December .....	39,071			478,829		

## Intended Placements of Egg-Type Pullet Chicks for Hatchery Supply Flocks by Month – United States: 2011-2012

[Blank data cells indicate estimation period has not yet begun]

Month	Pullet chicks hatched		2012 as percent of 2011	Cumulative potential placements relative to current supply flocks 7-18 months earlier <sup>1</sup>	
	2011	2012		2012	2013
	(1,000 chicks)	(1,000 chicks)	(percent)	(1,000 chicks)	(1,000 chicks)
January .....	220	263	120	2,920	2,834
February .....	244	238	98	2,936	
March .....	253	210	83	3,001	
April .....	287	137	48	3,002	
May .....	196	302	154	3,098	
June .....	302	119	39	3,053	
July .....	234			3,067	
August .....	318			3,110	
September .....	252			3,104	
October .....	266			3,061	
November .....	218			2,911	
December .....	277			3,017	
Total .....	3,067				

<sup>1</sup> For June 2012, includes breeder pullet chicks hatched December 2010 through November 2011. The 7-18 months represent the first laying cycle. Molting and additional laying cycles will increase the cumulative potential placements.

## Broiler-Type Eggs in Incubators – Regions and United States: July 1, 2011 and 2012

[See regional listing on page 19]

Region	2011	2012	2012 as percent of 2011
	(1,000 eggs)	(1,000 eggs)	(percent)
North Atlantic .....	12,678	12,308	97
East North Central .....	12,857	13,080	102
West North Central .....	27,553	27,869	101
South Atlantic .....	232,859	232,792	100
South Central .....	309,253	303,050	98
West .....	23,954	22,879	96
United States .....	619,154	611,978	99

## Broiler-Type Chicks Hatched – States and United States: June 2011 and 2012

State	During June			January-June		
	2011	2012	2012 as percent of 2011	2011	2012	2012 as percent of 2011
	(1,000 chicks)	(1,000 chicks)	(percent)	(1,000 chicks)	(1,000 chicks)	(percent)
Alabama .....	106,454	103,439	97	650,564	617,513	95
Arkansas .....	84,509	79,206	94	512,112	459,330	90
Delaware .....	11,620	13,274	114	83,029	74,966	90
Florida .....	4,814	4,738	98	28,614	28,478	100
Georgia .....	120,360	117,850	98	718,921	704,112	98
Kentucky .....	29,101	28,186	97	166,668	165,844	100
Louisiana .....	11,964	12,749	107	73,276	76,490	104
Maryland .....	27,721	26,331	95	165,519	160,379	97
Mississippi .....	68,294	66,630	98	412,767	398,092	96
Missouri .....	27,904	28,793	103	170,739	173,083	101
North Carolina .....	72,441	72,856	101	432,772	442,034	102
Oklahoma .....	24,848	24,908	100	150,985	148,092	98
Pennsylvania .....	14,405	13,682	95	83,726	81,937	98
South Carolina .....	18,859	18,392	98	114,797	113,493	99
Texas .....	53,717	54,447	101	331,048	325,889	98
Virginia .....	22,707	22,994	101	135,042	135,576	100
California, Tennessee, and West Virginia .....	40,788	40,134	98	247,622	238,152	96
19 States <sup>1</sup> .....	740,506	728,609	98	4,478,201	4,343,460	97
Other States <sup>2</sup> .....	25,865	27,707	107	154,320	159,397	103
United States .....	766,371	756,316	99	4,632,521	4,502,857	97

<sup>1</sup> States in the weekly hatchery production estimating program.

<sup>2</sup> Not published separately to avoid disclosing data for individual operations.

## Broiler-Type Chicks Hatched by Month – United States: 2011-2012

[Blank data cells indicate estimation period has not yet begun]

Month	By months			Cumulative		
	2011	2012	2012 as percent of 2011	2011	2012	2012 as percent of 2011
	(1,000 chicks)	(1,000 chicks)	(percent)	(1,000 chicks)	(1,000 chicks)	(percent)
January .....	781,313	751,870	96	781,313	751,870	96
February .....	708,722	705,113	99	1,490,035	1,456,983	98
March .....	793,765	764,225	96	2,283,800	2,221,208	97
April .....	777,866	747,697	96	3,061,666	2,968,905	97
May .....	804,484	777,636	97	3,866,150	3,746,541	97
June .....	766,371	756,316	99	4,632,521	4,502,857	97
July .....	768,432			5,400,953		
August .....	758,980			6,159,933		
September .....	719,606			6,879,539		
October .....	715,886			7,595,425		
November .....	702,169			8,297,594		
December .....	758,382			9,055,976		



## Intended Placements of Broiler-Type Pullet Chicks for Hatchery Supply Flocks by Month and Total: 2011-2012

[Blank data cells indicate estimation period has not yet begun]

Month	Pullet chicks hatched		2012 as percent of 2011	Cumulative potential placements relative to current supply flocks 7-15 months earlier <sup>1</sup>	
	2011 (1,000 chicks)	2012 (1,000 chicks)		2012 (1,000 chicks)	2013 (1,000 chicks)
United States placements					
January .....	6,557	6,673	102	64,111	60,864
February .....	7,284	7,025	96	63,679	
March .....	7,058	6,753	96	63,323	
April .....	7,044	6,524	93	63,209	
May .....	7,721	7,472	97	62,941	
June .....	7,211	6,800	94	62,547	
July .....	6,444			61,927	
August .....	7,233			61,556	
September .....	6,657			60,860	
October .....	6,289			60,402	
November .....	6,890			60,482	
December .....	6,438			60,721	
Annual total .....	82,826				
Total placements <sup>2</sup>					
January .....	8,187	8,201	100		
February .....	8,931	8,818	99		
March .....	9,023	8,525	94		
April .....	8,944	8,232	92		
May .....	9,612	9,430	98		
June .....	9,225	8,554	93		
July .....	8,131				
August .....	8,700				
September .....	8,546				
October .....	7,938				
November .....	8,489				
December .....	8,279				
Annual total .....	104,005				

<sup>1</sup> For June 2012, includes breeder pullet chicks hatched March 2011 through November 2011.

<sup>2</sup> United States production of intended placements worldwide.

## Statistical Methodology

**Survey Procedures:** Primary data for the *Chickens and Eggs* report are from weekly and/or monthly questionnaires sent to producers. An attempt is made to collect information for layer and egg estimates from each known contractor and independent producer who has at least 30,000 table egg layers, flocks of hatchery supply layers, or pullet only operations with at least 500 pullets. Coverage for operations with less than 30,000 table egg layers are estimated each month based on data reported in December. Approximately 650 contractors, independent egg producers, and pullet only operations are contacted each month. All known hatcheries, approximately 300, are contacted for information on a weekly and/or monthly basis.

**Estimating Procedures:** Sound statistical methodology is employed to derive estimates from the reported data. All data are analyzed for unusual values. Data from each operation are compared to their own past operating profile and to trends from similar operations. Data for missing operations are estimated based on similar operations or historical data. NASS field offices prepare these estimates by using a combination of survey indications and historic trends. Individual State estimates are reviewed by the Agricultural Statistics Board for reasonableness. Individual hatchery data are summed to State, regional, and United States totals.

For chicken hatcheries, chicks hatched consist of all chicks of domesticated breeds including males and chicks destined for hatchery supply flocks and research purposes. Eggs set are eggs in incubators for the purpose of hatching. The relationship of egg-type chicks hatched to chicken inventory and poultry marketings are carefully monitored. The disposition of egg-type chicks hatched prior to placement into the laying flock can vary significantly, which can make comparisons to changes in layer inventory inconsistent over time. Broiler chicks placed are specifically placed on feed for meat production. Intended placement data reported by leading breeders include pullet chicks expected from eggs sold the preceding month. The breeders in this report account for a large percentage of replacement pullets for hatchery supply flocks. Production of replacement pullets by these breeders indicates the number of pullets available to hatchery supply layer flocks several months before the pullets will actually move into the laying flocks. "Hatchery Supply Flocks" include all generations of layers which could lay eggs to supply a hatchery. This includes the generations of parents, grandparents, great-grandparents, pedigree, etc. Also included are research flocks, vaccine flocks, and specific pathogen-free flocks. The broiler cumulative potential placements are a moving total of the intended placements 7-15 months earlier. The egg-type cumulative potential placements of 7-18 months earlier represent the first laying cycle. Molting and additional laying cycles will increase the cumulative potential placements of egg-type hatching flocks.

**Revision Policy:** The previous month's estimates are subject to revision if late reports or corrected data indicates a different level. Additionally, revisions after the monthly report will be made at the end of the marketing year and published in the annual reports of *Chickens and Eggs Summary* and *Hatchery Production Summary*. Estimates will also be reviewed for chickens and eggs after data from the 5-year Census of Agriculture are available. No revisions will be made after that date.

**Reliability:** Estimates are based on a census of all known contractors and independent producers who have at least 30,000 table egg layers, flocks of hatchery supply layers, pullet only operations with at least 500 pullets, or operating hatcheries and therefore, have no sampling error. However, estimates are subject to errors such as omission, duplication, and mistakes in reporting, recording, and processing the data. While these errors cannot be measured directly, they are minimized through strict quality controls in the data collection process and a careful review of all reported data for consistency and reasonableness.

To assist in evaluating the reliability of the estimates in this report, the "Root Mean Square Error" is shown for selected items in the following table. The "Root Mean Square Error" is a statistical measure based on past performance and is computed using the differences between first and final estimates. The "Root Mean Square Error" for all layers over the past 24 months is 0.3 percent. This means that chances are 2 out of 3 that the final estimate will not be above or below the current estimate of 337 million layers by more than 0.3 percent. Chances are 9 out of 10 that the difference will not exceed 0.5 percent.

## Reliability of Layer and Egg Estimates

[Based on data for the past twenty-four months]

Item	Root mean square error	90 percent confidence level	Difference between first and latest estimate				
			Average	Smallest	Largest	Months	
						Below latest	Above latest
All layers .....	(percent) 0.3	(percent) 0.5	(1,000) 639	(1,000) 25	(1,000) 1,904	(number) 17	(number) 7
Eggs .....	0.3	0.4	(million) 14	(million) 1	(million) 39	18	6

## Regional Listing

- North Atlantic:** Connecticut, Maine, Massachusetts, New Hampshire, New Jersey, New York, Pennsylvania, Rhode Island, Vermont.
- East North Central:** Illinois, Indiana, Michigan, Ohio, Wisconsin.
- West North Central:** Iowa, Kansas, Minnesota, Missouri, Nebraska, North Dakota, South Dakota.
- South Atlantic:** Delaware, Florida, Georgia, Maryland, North Carolina, South Carolina, Virginia, West Virginia.
- South Central:** Alabama, Arkansas, Kentucky, Louisiana, Mississippi, Oklahoma, Tennessee, Texas.
- West:** Alaska, Arizona, California, Colorado, Hawaii, Idaho, Montana, New Mexico, Nevada, Oregon, Utah, Washington, Wyoming.

## Terms and Definitions of Chickens and Eggs Estimates

**All Layers** includes both table egg and hatching egg flocks regardless of size.

**Intended Placements** are reported by leading breeders. Coverage may not be 100 percent. Includes expected pullet chicks from eggs sold during the preceding month at the rate of 125 pullet chicks per case of 30 dozen eggs.

## Information Contacts

Listed below are the commodity specialists in the Livestock Branch of the National Agricultural Statistics Service to contact for additional information. E-mail inquiries may be sent to [nass@nass.usda.gov](mailto:nass@nass.usda.gov)

- Dan Kerestes, Chief, Livestock Branch ..... (202) 720-3570
- Bruce Boess, Head, Poultry and Specialty Commodities Section ..... (202) 720-4447
- Cody Brokmeyer – Poultry Slaughter, Turkey Hatchery, Turkeys Raised ..... (202) 690-3237
- David Colwell – Cold Storage ..... (202) 720-8784
- LaKeya Jones – Catfish Processing, Catfish Production, Trout Production,  
Census of Aquaculture, Honey, Egg Products, Mink ..... (202) 720-0585
- Kim Linonis – Layers, Eggs ..... (202) 690-8632
- Miste Salmon – Broiler Hatchery, Chicken Hatchery ..... (202) 720-3244

## Access to NASS Reports

For your convenience, you may access NASS reports and products the following ways:

- All reports are available electronically, at no cost, on the NASS web site: <http://www.nass.usda.gov>
- Both national and state specific reports are available via a free e-mail subscription. To set-up this free subscription, visit <http://www.nass.usda.gov> and in the “Follow NASS” box under “Receive reports by Email,” click on “National” or “State” to select the reports you would like to receive.
- Printed reports may be purchased from the National Technical Information Service (NTIS) by calling toll-free (800) 999-6779, or (703) 605-6220 if calling from outside the United States or Canada. Accepted methods of payment are Visa, MasterCard, check, or money order.

For more information on NASS surveys and reports, call the NASS Agricultural Statistics Hotline at (800) 727-9540, 7:30 a.m. to 4:00 p.m. ET, or e-mail: [nass@nass.usda.gov](mailto:nass@nass.usda.gov).

The United States Department of Agriculture (USDA) prohibits discrimination in all its programs and activities on the basis of race, color, national origin, age, disability, and where applicable, sex, marital status, familial status, parental status, religion, sexual orientation, political beliefs, genetic information, reprisal, or because all or a part of an individual's income is derived from any public assistance program. (Not all prohibited bases apply to all programs.) Persons with disabilities who require alternative means for communication of program information (Braille, large print, audiotape, etc.) should contact USDA's TARGET Center at (202) 720-2600 (voice and TDD).

To file a complaint of discrimination, write to USDA, Assistant Secretary for Civil Rights, Office of the Assistant Secretary for Civil Rights, 1400 Independence Avenue, S.W., Stop 9410, Washington, DC 20250-9410, or call toll-free at (866) 632-9992 (English) or (800) 877-8339 (TDD) or (866) 377-8642 (English Federal-relay) or (800) 845-6136 (Spanish Federal-relay). USDA is an equal opportunity provider and employer.