



Chickens and Eggs

ISSN: 1948-9064

Released August 21, 2012, by the National Agricultural Statistics Service (NASS), Agricultural Statistics Board, United States Department of Agriculture (USDA).

July Egg Production Down Slightly

United States egg production totaled 7.73 billion during July 2012, down slightly from last year. Production included 6.68 billion table eggs, and 1.05 billion hatching eggs, of which 983 million were broiler-type and 68 million were egg-type. The total number of layers during July 2012 averaged 335 million, down slightly from last year. July egg production per 100 layers was 2,307 eggs, up slightly from July 2011.

All layers in the United States on August 1, 2012 totaled 334 million, down slightly from last year. The 334 million layers consisted of 281 million layers producing table or market type eggs, 50.6 million layers producing broiler-type hatching eggs, and 2.78 million layers producing egg-type hatching eggs. Rate of lay per day on August 1, 2012, averaged 74.8 eggs per 100 layers, up 1 percent from August 1, 2011.

Egg-Type Chicks Hatched Down 8 Percent

Egg-type chicks hatched during July 2012 totaled 34.0 million, down 8 percent from July 2011. Eggs in incubators totaled 38.6 million on August 1, 2012, up 4 percent from a year ago.

Domestic placements of egg-type pullet chicks for future hatchery supply flocks by leading breeders totaled 262 thousand during July 2012, up 12 percent from July 2011.

Broiler-Type Chicks Hatched Down 1 Percent

Broiler-type chicks hatched during July 2012 totaled 763 million, down 1 percent from July 2011. Eggs in incubators totaled 611 million on August 1, 2012, up slightly from a year earlier.

Leading breeders placed 6.07 million broiler-type pullet chicks for future domestic hatchery supply flocks during July 2012, down 6 percent from July 2011.

This page intentionally left blank.

Contents

Average Number of All Layers on Hand During the Month – United States: 2011-2012.....	4
Egg Production During the Month by Type – United States: 2011-2012.....	4
Average Number of Layers During the Month – United States.....	5
All Egg Production During the Month – United States	5
Layers on Hand and Eggs Produced by Type and Forced Molt – United States: June-July 2011 and 2012	6
Layers on Hand and Eggs Produced by Type and Forced Molt – United States: July-August 2011 and 2012.....	7
Layers on Hand and Eggs Produced – States and United States: During June 2011 and 2012	8
Layers on Hand and Eggs Produced – States and United States: During July 2011 and 2012.....	9
Egg Production by Type – States and United States: June 2011 and 2012.....	10
Egg Production by Type – States and United States: July 2011 and 2012	11
Forced Molt as Percent of All Layers by Month – United States: 2011-2012.....	12
Forced Molt as Percent of All Layers – States and United States: August 1, 2011 and 2012	12
Hatchery Production – United States: 2011 and 2012	13
Egg-Type Eggs in Incubators – Regions and United States: August 1, 2011 and 2012	14
Egg-Type Chicks Hatched by Month – United States: 2011-2012.....	14
Intended Placements of Egg-Type Pullet Chicks for Hatchery Supply Flocks by Month – United States: 2011-2012.....	15
Broiler-Type Eggs in Incubators – Regions and United States: August 1, 2011 and 2012	15
Broiler-Type Chicks Hatched – States and United States: July 2011 and 2012	16
Broiler-Type Chicks Hatched by Month – United States: 2011-2012.....	16
Intended Placements of Broiler-Type Pullet Chicks for Hatchery Supply Flocks by Month and Total: 2011-2012.....	17
Statistical Methodology	18
Regional Listing.....	19
Terms and Definitions of Chickens and Eggs Estimates	19
Information Contacts	19

Average Number of All Layers on Hand During the Month – United States: 2011-2012

[Blank data cells indicate estimation period has not yet begun]

Month	2011		2012	
	(1,000 layers)		(1,000 layers)	
December ¹		343,083		338,158
January		342,266		337,618
February		339,787		338,151
March		340,655		339,626
April		340,896		339,517
May		337,897		338,447
June		336,411		336,787
July		335,799		334,918
August		335,412		
September		335,328		
October		335,884		
November		337,716		

¹ December preceding year.

Egg Production During the Month by Type – United States: 2011-2012

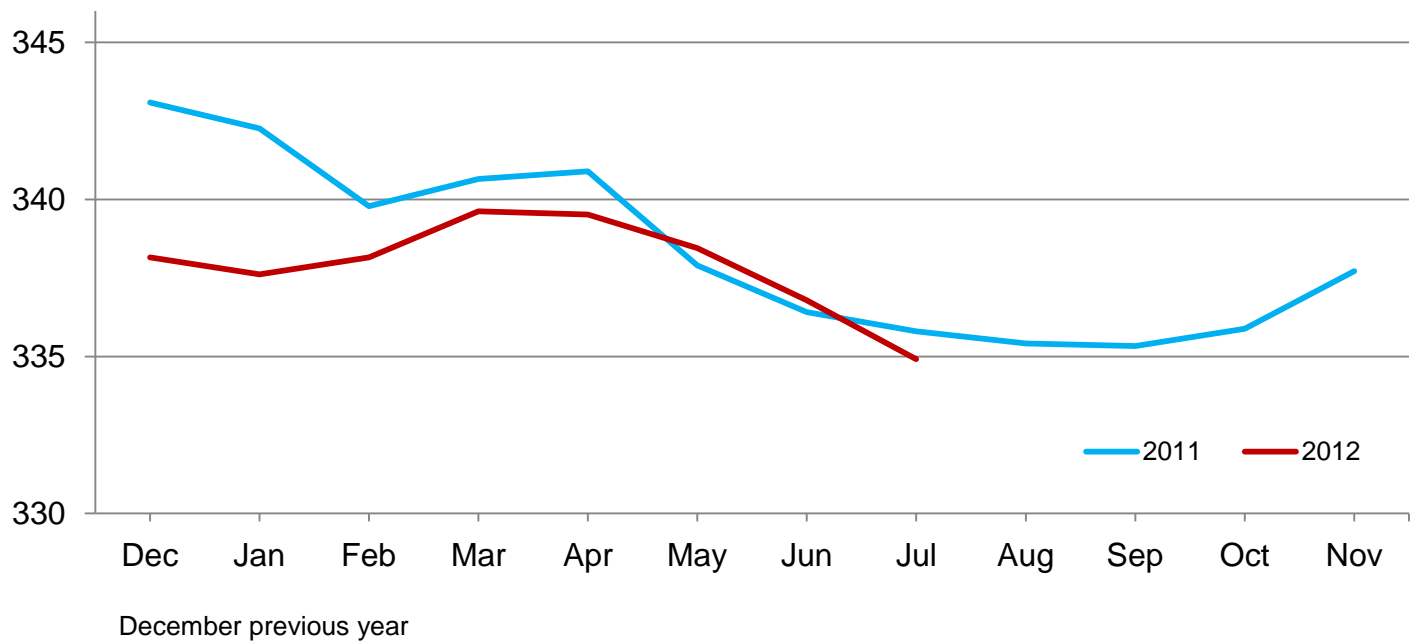
[Totals may not add due to rounding. Blank data cells indicate estimation period has not yet begun]

Month	Total eggs		Table eggs		Hatching eggs	
	2011	2012	2011	2012	2011	2012
	(million eggs)	(million eggs)	(million eggs)	(million eggs)	(million eggs)	(million eggs)
December ¹	7,927	7,932	6,845	6,894	1,083	1,038
January	7,833	7,831	6,736	6,786	1,098	1,046
February	7,013	7,235	6,022	6,247	990	987
March	7,840	7,859	6,735	6,800	1,106	1,059
April	7,617	7,582	6,534	6,545	1,083	1,038
May	7,773	7,770	6,651	6,693	1,123	1,078
June	7,503	7,501	6,421	6,470	1,083	1,032
July	7,732	7,726	6,633	6,676	1,100	1,051
August	7,719		6,644		1,076	
September	7,503		6,476		1,028	
October	7,783		6,734		1,050	
November	7,612		6,605		1,007	
During year	91,855		79,036		12,827	

¹ December preceding year.

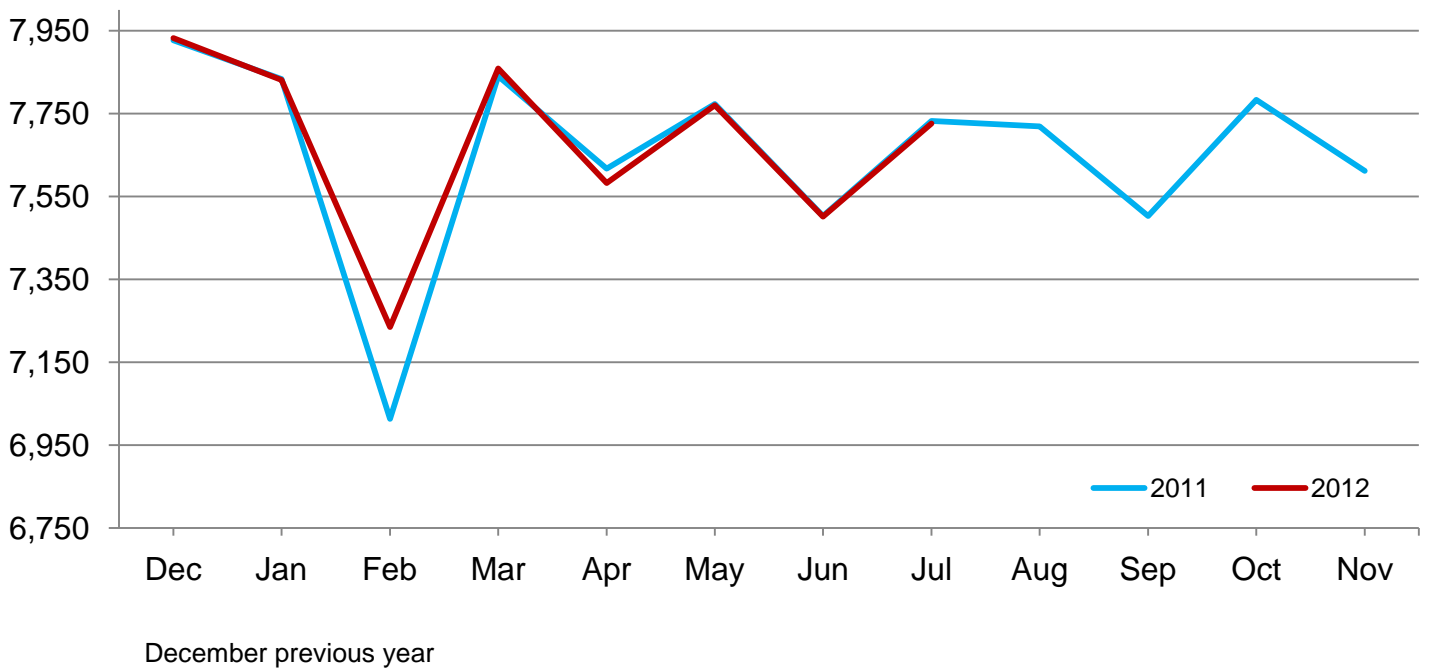
Average Layers During the Month – United States

Million layers



All Egg Production During the Month – United States

Million eggs



Layers on Hand and Eggs Produced by Type and Forced Molt – United States: June-July 2011 and 2012

[Totals may not add due to rounding]

Item	2011	2012	2012 as percent of 2011
Layers during June			
All layers 1,000	336,411	336,787	100
Table egg type 1,000	278,225	281,708	101
Hatching egg type 1,000	58,186	55,079	95
Broiler-type hatching 1,000	55,262	52,194	94
Egg-type hatching 1,000	2,924	2,885	99
Eggs per 100 layers during June			
All layers number	2,230	2,227	100
Table egg type number	2,308	2,297	100
Hatching egg type number	1,861	1,874	101
Broiler-type hatching number	1,833	1,847	101
Egg-type hatching number	2,394	2,357	98
Eggs produced during June			
All layers million	7,503	7,501	100
Table egg type million	6,421	6,470	101
Hatching egg type million	1,083	1,032	95
Broiler-type hatching million	1,013	964	95
Egg-type hatching million	70	68	97
Layers on July 1			
All layers 1,000	336,559	335,332	100
Table egg type 1,000	278,788	281,017	101
Hatching egg type 1,000	57,771	54,315	94
Broiler-type hatching 1,000	54,945	51,507	94
Egg-type hatching 1,000	2,826	2,808	99
Eggs per 100 layers on July 1			
All layers number	74.5	73.9	99
Table egg type number	77.1	76.1	99
Hatching egg type number	61.8	62.5	101
Broiler-type hatching number	60.8	61.7	101
Egg-type hatching number	80.0	77.8	97
Forced molt layers on July 1			
Being molted percent	3.5	2.9	83
Molt completed percent	19.6	20.4	104
Layers sold for slaughter during June 1,000	13,311	15,401	116
Layers rendered, died, destroyed, composted or disappeared for any reason during June 1,000	8,236	8,479	103
Pullets on July 1 1,000	106,502	107,553	101
Pullets added during June ¹ 1,000	22,694	24,236	107

¹ Pullet chicks less than 3 days old added to pullet flocks.

Layers on Hand and Eggs Produced by Type and Forced Molt – United States: July-August 2011 and 2012

[Totals may not add due to rounding]

Item	2011	2012	2012 as percent of 2011
Layers during July			
All layers 1,000	335,799	334,918	100
Table egg type 1,000	278,675	281,065	101
Hatching egg type 1,000	57,124	53,853	94
Broiler-type hatching 1,000	54,292	51,056	94
Egg-type hatching 1,000	2,832	2,797	99
Eggs per 100 layers during July			
All layers number	2,303	2,307	100
Table egg type number	2,380	2,375	100
Hatching egg type number	1,926	1,952	101
Broiler-type hatching number	1,899	1,925	101
Egg-type hatching number	2,436	2,431	100
Eggs produced during July			
All layers million	7,732	7,726	100
Table egg type million	6,633	6,676	101
Hatching egg type million	1,100	1,051	96
Broiler-type hatching million	1,031	983	95
Egg-type hatching million	69	68	99
Layers on August 1			
All layers 1,000	334,997	334,480	100
Table egg type 1,000	278,545	281,100	101
Hatching egg type 1,000	56,452	53,380	95
Broiler-type hatching 1,000	53,623	50,598	94
Egg-type hatching 1,000	2,829	2,782	98
Eggs per 100 layers on August 1			
All layers number	74.2	74.8	101
Table egg type number	76.6	77.0	101
Hatching egg type number	62.1	63.1	102
Broiler-type hatching number	61.3	62.2	101
Egg-type hatching number	77.4	79.7	103
Forced molt layers on August 1			
Being molted percent	3.6	2.5	69
Molt completed percent	19.5	20.5	105
Layers sold for slaughter during July 1,000	14,780	13,898	94
Layers rendered, died, destroyed, composted or disappeared for any reason during July 1,000	8,804	7,481	85
Pullets on August 1 1,000	105,189	105,332	100
Pullets added during July ¹ 1,000	21,721	19,191	88

¹ Pullet chicks less than 3 days old added to pullet flocks.

Layers on Hand and Eggs Produced – States and United States: During June 2011 and 2012

State	Table egg layers in flocks 30,000 and above		All layers		Eggs per 100 for all layers	
	2011	2012	2011	2012	2011	2012
	(1,000 layers)	(1,000 layers)	(1,000 layers)	(1,000 layers)	(eggs)	(eggs)
Alabama	1,279	1,542	9,181	9,173	1,852	1,908
Arkansas	3,446	3,593	12,496	12,407	2,033	2,031
California	18,760	19,274	19,061	19,623	2,251	2,273
Colorado	3,611	3,791	4,042	4,240	2,400	2,382
Connecticut	2,200	2,242	2,271	2,309	2,334	2,339
Florida	9,037	8,089	9,416	8,415	2,230	2,222
Georgia	7,401	8,139	16,318	16,766	2,059	2,111
Illinois	4,119	4,213	4,339	4,441	2,374	2,252
Indiana	22,446	23,496	23,147	24,276	2,346	2,294
Iowa	51,866	50,850	52,714	51,786	2,254	2,286
Maine	3,467	3,438	3,522	3,493	2,328	2,319
Maryland	1,807	2,176	1,942	2,295	2,369	2,222
Michigan	10,133	11,299	10,287	11,449	2,352	2,428
Minnesota	9,637	9,807	10,133	10,246	2,280	2,284
Mississippi	1,466	1,461	6,119	5,787	1,994	2,022
Missouri	5,777	5,519	7,380	7,028	2,331	2,305
Nebraska	9,094	9,107	9,144	9,157	2,373	2,435
New York	3,985	4,207	4,218	4,439	2,418	2,410
North Carolina	5,783	5,646	13,575	12,847	2,041	1,969
Ohio	27,000	26,774	27,504	27,305	2,225	2,208
Oregon	2,189	1,937	2,332	2,076	2,273	2,457
Pennsylvania	23,398	22,609	24,613	23,722	2,434	2,361
South Carolina	3,181	2,999	4,529	4,273	2,142	2,059
South Dakota	2,349	2,051	2,389	2,091	2,428	2,439
Texas	13,322	14,834	17,602	18,663	2,204	2,186
Utah	3,403	3,665	3,433	3,695	2,272	2,219
Virginia	967	1,107	2,899	2,983	1,932	1,944
Washington	6,630	6,701	6,745	6,816	2,328	2,215
Wisconsin	4,111	4,424	4,682	5,030	2,093	2,167
Other States ¹	11,801	12,115	20,378	19,956	2,125	2,125
United States	273,665	277,105	336,411	336,787	2,230	2,227

¹ Includes data for States not published in this table.

Layers on Hand and Eggs Produced – States and United States: During July 2011 and 2012

State	Table egg layers in flocks 30,000 and above		All layers		Eggs per 100 for all layers	
	2011	2012	2011	2012	2011	2012
	(1,000 layers)	(1,000 layers)	(1,000 layers)	(1,000 layers)	(eggs)	(eggs)
Alabama	1,278	1,539	9,028	9,092	1,949	2,013
Arkansas	3,438	3,672	12,399	12,203	2,089	2,139
California	18,685	19,207	18,985	19,556	2,391	2,352
Colorado	3,918	3,787	4,386	4,201	2,371	2,523
Connecticut	2,222	2,266	2,295	2,335	2,397	2,441
Florida	9,040	8,044	9,416	8,372	2,326	2,293
Georgia	7,386	8,311	16,192	16,752	2,143	2,137
Illinois	4,205	4,108	4,422	4,358	2,397	2,318
Indiana	22,354	23,529	23,019	24,207	2,355	2,313
Iowa	51,457	50,790	52,324	51,752	2,349	2,350
Maine	3,482	3,452	3,537	3,507	2,347	2,367
Maryland	1,745	2,111	1,867	2,225	2,250	2,382
Michigan	9,996	11,495	10,147	11,645	2,513	2,508
Minnesota	9,618	9,807	10,111	10,232	2,364	2,355
Mississippi	1,355	1,460	5,924	5,719	2,076	2,098
Missouri	5,835	5,484	7,351	6,937	2,313	2,335
Nebraska	9,089	9,072	9,139	9,122	2,484	2,499
New York	4,092	4,140	4,325	4,373	2,428	2,515
North Carolina	5,644	5,623	13,209	12,678	2,052	1,988
Ohio	27,065	26,273	27,551	26,809	2,301	2,290
Oregon	2,141	2,027	2,273	2,185	2,420	2,609
Pennsylvania	23,607	22,467	24,800	23,533	2,492	2,507
South Carolina	3,204	3,013	4,502	4,268	2,221	2,226
South Dakota	2,297	2,032	2,337	2,072	2,525	2,510
Texas	13,776	14,887	17,961	18,656	2,272	2,267
Utah	3,499	3,611	3,529	3,641	2,267	2,362
Virginia	1,152	1,180	2,979	2,986	2,014	2,076
Washington	6,549	6,601	6,664	6,716	2,446	2,367
Wisconsin	4,102	4,364	4,671	4,969	2,248	2,375
Other States ¹	11,884	12,110	20,456	19,817	2,171	2,195
United States	274,115	276,462	335,799	334,918	2,303	2,307

¹ Includes data for States not published in this table.

Egg Production by Type – States and United States: June 2011 and 2012

[Totals may not add due to rounding. Data by type of flock not shown for some States to avoid disclosing individual operations, data included in United States totals]

State	Total production		Table eggs		Hatching eggs	
	2011	2012	2011	2012	2011	2012
	(million eggs)	(million eggs)	(million eggs)	(million eggs)	(million eggs)	(million eggs)
Alabama	170	175	31	37	139	138
Arkansas	254	252	82	85	172	167
California	429	446	(D)	(D)	(D)	(D)
Colorado	97	101	(D)	(D)	(D)	(D)
Connecticut	53	54	(D)	(D)	(D)	(D)
Florida	210	187	204	182	6	5
Georgia	336	354	169	190	167	164
Illinois	103	100	100	97	3	3
Indiana	543	557	531	542	12	15
Iowa	1,188	1,184	1,175	1,170	13	14
Maine	82	81	(D)	(D)	(D)	(D)
Maryland	46	51	44	50	2	1
Michigan	242	278	(D)	(D)	(D)	(D)
Minnesota	231	234	223	227	8	7
Mississippi	122	117	36	36	86	81
Missouri	172	162	(D)	(D)	(D)	(D)
Nebraska	217	223	217	223	-	-
New York	102	107	(D)	(D)	(D)	(D)
North Carolina	277	253	140	128	137	125
Ohio	612	603	(D)	(D)	(D)	(D)
Oregon	53	51	51	49	2	2
Pennsylvania	599	560	578	542	21	18
South Carolina	97	88	74	66	23	22
South Dakota	58	51	58	51	-	-
Texas	388	408	(D)	(D)	(D)	(D)
Utah	78	82	78	82	-	-
Virginia	56	58	21	24	35	34
Washington	157	151	(D)	(D)	(D)	(D)
Wisconsin	98	109	(D)	(D)	(D)	(D)
Other States ¹	433	424	300	305	134	120
United States	7,503	7,501	6,421	6,470	1,083	1,032

- Represents zero.

(D) Withheld to avoid disclosing data for individual operations.

¹ Includes data for States not published in this table.

Egg Production by Type – States and United States: July 2011 and 2012

[Totals may not add due to rounding. Data by type of flock not shown for some States to avoid disclosing individual operations, data included in United States totals]

State	Total production		Table eggs		Hatching eggs	
	2011	2012	2011	2012	2011	2012
	(million eggs)	(million eggs)	(million eggs)	(million eggs)	(million eggs)	(million eggs)
Alabama	176	183	30	38	146	145
Arkansas	259	261	84	92	175	169
California	454	460	(D)	(D)	(D)	(D)
Colorado	104	106	(D)	(D)	(D)	(D)
Connecticut	55	57	(D)	(D)	(D)	(D)
Florida	219	192	213	187	6	5
Georgia	347	358	177	194	170	164
Illinois	106	101	103	97	3	4
Indiana	542	560	530	547	12	13
Iowa	1,229	1,216	1,216	1,200	13	16
Maine	83	83	(D)	(D)	(D)	(D)
Maryland	42	53	40	52	2	1
Michigan	255	292	(D)	(D)	(D)	(D)
Minnesota	239	241	231	234	8	7
Mississippi	123	120	35	36	88	84
Missouri	170	162	(D)	(D)	(D)	(D)
Nebraska	227	228	227	228	-	-
New York	105	110	(D)	(D)	(D)	(D)
North Carolina	271	252	133	126	138	126
Ohio	634	614	(D)	(D)	(D)	(D)
Oregon	55	57	53	55	2	2
Pennsylvania	618	590	597	572	21	18
South Carolina	100	95	78	72	22	23
South Dakota	59	52	59	52	-	-
Texas	408	423	(D)	(D)	(D)	(D)
Utah	80	86	80	86	-	-
Virginia	60	62	25	28	35	34
Washington	163	159	(D)	(D)	(D)	(D)
Wisconsin	105	118	(D)	(D)	(D)	(D)
Other States ¹	444	435	308	314	137	122
United States	7,732	7,726	6,633	6,676	1,100	1,051

- Represents zero.

(D) Withheld to avoid disclosing data for individual operations.

¹ Includes data for States not published in this table.

Forced Molt as Percent of All Layers by Month – United States: 2011-2012

[As of the first of the month. Blank data cells indicate estimation period has not yet begun]

Month	Being molted		Molt completed	
	2011 (percent)	2012 (percent)	2011 (percent)	2012 (percent)
January	2.8	2.8	21.2	19.9
February	3.6	4.8	20.2	18.8
March	3.0	3.8	20.1	19.9
April	2.6	2.8	20.0	19.7
May	3.0	4.3	20.0	19.6
June	3.8	2.9	19.5	20.3
July	3.5	2.9	19.6	20.4
August	3.6	2.5	19.5	20.5
September	3.2		20.3	
October	3.9		20.4	
November	2.5		21.2	
December	1.7		21.1	

Forced Molt as Percent of All Layers – States and United States: August 1, 2011 and 2012

[As of the first of the month]

State	Being molted		Molt completed	
	2011 (percent)	2012 (percent)	2011 (percent)	2012 (percent)
Alabama	2.5	1.0	8.0	6.5
Arkansas	1.0	1.0	7.5	10.5
California	7.0	3.0	27.5	32.5
Colorado	1.0	5.5	19.5	32.5
Connecticut	-	-	13.0	13.0
Florida	6.5	8.0	34.5	36.0
Georgia	3.5	1.5	17.0	12.0
Illinois	4.5	-	25.0	17.5
Indiana	6.0	1.5	25.0	33.0
Iowa	4.5	3.5	33.5	29.5
Maine	-	-	-	-
Maryland	5.0	-	17.5	5.5
Michigan	1.5	1.0	13.5	11.5
Minnesota	4.5	4.0	22.5	26.0
Mississippi	1.0	1.0	10.5	12.0
Missouri	3.0	-	15.5	22.0
Nebraska	-	-	1.5	1.5
New York	-	1.0	7.0	15.0
North Carolina	3.0	-	14.5	16.5
Ohio	3.5	2.5	13.5	12.5
Oregon	2.5	4.5	31.5	30.0
Pennsylvania	1.0	2.5	10.0	9.0
South Carolina	3.5	2.0	17.0	16.5
South Dakota	0.5	4.5	16.5	32.0
Texas	3.5	3.5	18.5	23.5
Utah	7.5	4.5	40.0	33.0
Virginia	5.5	-	7.0	11.5
Washington	5.0	4.5	29.5	32.5
Wisconsin	11.5	5.0	24.0	26.5
Other States ¹	2.7	2.8	14.4	18.2
United States	3.6	2.5	19.5	20.5

- Represents zero.

¹ Includes data for States not published in this table.

Hatchery Production – United States: 2011 and 2012

Item	2011	2012	2012 as percent of 2011
	(1,000)	(1,000)	(percent)
Egg-type			
Eggs in incubators on August 1	37,007	38,633	104
Chicks hatched during July	36,950	34,041	92
Chicks hatched January through July	283,386	276,632	98
Pullets hatched during July for intended placements:			
Hatchery supply flocks	234	262	112
Cumulative potential placements 7-18 months earlier ¹	2,981	3,067	103
Broiler-type			
Eggs in incubators on August 1	608,371	610,695	100
Chicks hatched during July	768,432	762,749	99
Chicks hatched January through July	5,400,953	5,265,606	97
Pullets hatched during July for intended placements:			
Hatchery supply flocks	6,444	6,071	94
Cumulative potential placements 7-15 months earlier ²	64,656	61,927	96

¹ 2012 includes pullet chicks hatched January 2011 through December 2011.

² 2012 includes pullet chicks hatched April 2011 through December 2011.

Egg-Type Eggs in Incubators – Regions and United States: August 1, 2011 and 2012

[See regional listing on page 19]

Region	2011	2012	2012 as percent of 2011
	(1,000 eggs)	(1,000 eggs)	(percent)
North Atlantic	5,513	4,019	73
East North Central	6,489	7,148	110
West North Central	9,242	10,630	115
South Atlantic	4,452	4,670	105
South Central	4,809	5,082	106
West	6,502	7,084	109
United States	37,007	38,633	104

Egg-Type Chicks Hatched by Month – United States: 2011-2012

[Blank data cells indicate estimation period has not yet begun]

Month	By months			Cumulative		
	2011	2012	2012 as percent of 2011	2011	2012	2012 as percent of 2011
	(1,000 chicks)	(1,000 chicks)	(percent)	(1,000 chicks)	(1,000 chicks)	(percent)
January	40,590	40,277	99	40,590	40,277	99
February	37,415	39,300	105	78,005	79,577	102
March	43,603	40,622	93	121,608	120,199	99
April	42,959	39,702	92	164,567	159,901	97
May	42,949	43,280	101	207,516	203,181	98
June	38,920	39,410	101	246,436	242,591	98
July	36,950	34,041	92	283,386	276,632	98
August	41,431			324,817		
September	39,805			364,622		
October	37,624			402,246		
November	37,512			439,758		
December	39,071			478,829		

Intended Placements of Egg-Type Pullet Chicks for Hatchery Supply Flocks by Month – United States: 2011-2012

[Blank data cells indicate estimation period has not yet begun]

Month	Pullet chicks hatched		2012 as percent of 2011	Cumulative potential placements relative to current supply flocks 7-18 months earlier ¹	
	2011	2012		2012	2013
	(1,000 chicks)	(1,000 chicks)	(percent)	(1,000 chicks)	(1,000 chicks)
January	220	263	120	2,920	2,834
February	244	238	98	2,936	2,862
March	253	210	83	3,001	
April	287	137	48	3,002	
May	196	302	154	3,098	
June	302	119	39	3,053	
July	234	262	112	3,067	
August	318			3,110	
September	252			3,104	
October	266			3,061	
November	218			2,911	
December	277			3,017	
Total	3,067				

¹ For July 2012, includes breeder pullet chicks hatched January 2011 through December 2011. The 7-18 months represent the first laying cycle. Molting and additional laying cycles will increase the cumulative potential placements.

Broiler-Type Eggs in Incubators – Regions and United States: August 1, 2011 and 2012

[See regional listing on page 19]

Region	2011	2012	2012 as percent of 2011
	(1,000 eggs)	(1,000 eggs)	(percent)
North Atlantic	12,669	12,186	96
East North Central	12,953	12,572	97
West North Central	28,148	29,068	103
South Atlantic	229,922	232,180	101
South Central	302,363	302,840	100
West	22,316	21,849	98
United States	608,371	610,695	100

Broiler-Type Chicks Hatched – States and United States: July 2011 and 2012

State	During July			January-July		
	2011	2012	2012 as percent of 2011	2011	2012	2012 as percent of 2011
	(1,000 chicks)	(1,000 chicks)	(percent)	(1,000 chicks)	(1,000 chicks)	(percent)
Alabama	105,382	104,550	99	755,946	722,063	96
Arkansas	80,797	78,226	97	592,909	537,556	91
Delaware	10,916	13,002	119	93,945	87,968	94
Florida	4,962	4,909	99	33,576	33,387	99
Georgia	121,106	120,289	99	840,027	824,401	98
Kentucky	28,755	27,471	96	195,423	193,315	99
Louisiana	12,558	12,757	102	85,834	89,247	104
Maryland	28,575	27,352	96	194,094	187,731	97
Mississippi	68,054	67,382	99	480,821	465,474	97
Missouri	28,329	28,554	101	199,068	201,637	101
North Carolina	72,757	73,542	101	505,529	515,576	102
Oklahoma	24,112	24,685	102	175,097	172,777	99
Pennsylvania	14,174	13,623	96	97,900	95,560	98
South Carolina	19,745	18,601	94	134,542	132,094	98
Texas	56,479	54,761	97	387,527	380,650	98
Virginia	23,174	23,107	100	158,216	158,683	100
California, Tennessee, and West Virginia	42,239	41,392	98	289,861	279,544	96
19 States ¹	742,114	734,203	99	5,220,315	5,077,663	97
Other States ²	26,318	28,546	108	180,638	187,943	104
United States	768,432	762,749	99	5,400,953	5,265,606	97

¹ States in the weekly hatchery production estimating program.

² Not published separately to avoid disclosing data for individual operations.

Broiler-Type Chicks Hatched by Month – United States: 2011-2012

[Blank data cells indicate estimation period has not yet begun]

Month	By months			Cumulative		
	2011	2012	2012 as percent of 2011	2011	2012	2012 as percent of 2011
	(1,000 chicks)	(1,000 chicks)	(percent)	(1,000 chicks)	(1,000 chicks)	(percent)
January	781,313	751,870	96	781,313	751,870	96
February	708,722	705,113	99	1,490,035	1,456,983	98
March	793,765	764,225	96	2,283,800	2,221,208	97
April	777,866	747,697	96	3,061,666	2,968,905	97
May	804,484	777,636	97	3,866,150	3,746,541	97
June	766,371	756,316	99	4,632,521	4,502,857	97
July	768,432	762,749	99	5,400,953	5,265,606	97
August	758,980			6,159,933		
September	719,606			6,879,539		
October	715,886			7,595,425		
November	702,169			8,297,594		
December	758,382			9,055,976		

Intended Placements of Broiler-Type Pullet Chicks for Hatchery Supply Flocks by Month and Total: 2011-2012

[Blank data cells indicate estimation period has not yet begun]

Month	Pullet chicks hatched		2012 as percent of 2011	Cumulative potential placements relative to current supply flocks 7-15 months earlier ¹	
	2011 (1,000 chicks)	2012 (1,000 chicks)		2012 (1,000 chicks)	2013 (1,000 chicks)
United States placements					
January	6,557	6,673	102	64,111	60,864
February	7,284	7,025	96	63,679	60,646
March	7,058	6,753	96	63,323	
April	7,044	6,524	93	63,209	
May	7,721	7,472	97	62,941	
June	7,211	6,800	94	62,547	
July	6,444	6,071	94	61,927	
August	7,233			61,556	
September	6,657			60,860	
October	6,289			60,402	
November	6,890			60,482	
December	6,438			60,721	
Annual total	82,826				
Total placements ²					
January	8,187	8,201	100		
February	8,931	8,818	99		
March	9,023	8,525	94		
April	8,944	8,232	92		
May	9,612	9,430	98		
June	9,225	8,554	93		
July	8,131	7,447	92		
August	8,700				
September	8,546				
October	7,938				
November	8,489				
December	8,279				
Annual total	104,005				

¹ For July 2012, includes breeder pullet chicks hatched April 2011 through December 2011.

² United States production of intended placements worldwide.

Statistical Methodology

Survey Procedures: Primary data for the *Chickens and Eggs* report are from weekly and/or monthly questionnaires sent to producers. An attempt is made to collect information for layer and egg estimates from each known contractor and independent producer who has at least 30,000 table egg layers, flocks of hatchery supply layers, or pullet only operations with at least 500 pullets. Coverage for operations with less than 30,000 table egg layers are estimated each month based on data reported in December. Approximately 650 contractors, independent egg producers, and pullet only operations are contacted each month. All known hatcheries, approximately 300, are contacted for information on a weekly and/or monthly basis.

Estimating Procedures: Sound statistical methodology is employed to derive estimates from the reported data. All data are analyzed for unusual values. Data from each operation are compared to their own past operating profile and to trends from similar operations. Data for missing operations are estimated based on similar operations or historical data. NASS field offices prepare these estimates by using a combination of survey indications and historic trends. Individual State estimates are reviewed by the Agricultural Statistics Board for reasonableness. Individual hatchery data are summed to State, regional, and United States totals.

For chicken hatcheries, chicks hatched consist of all chicks of domesticated breeds including males and chicks destined for hatchery supply flocks and research purposes. Eggs set are eggs in incubators for the purpose of hatching. The relationship of egg-type chicks hatched to chicken inventory and poultry marketings are carefully monitored. The disposition of egg-type chicks hatched prior to placement into the laying flock can vary significantly, which can make comparisons to changes in layer inventory inconsistent over time. Broiler chicks placed are specifically placed on feed for meat production. Intended placement data reported by leading breeders include pullet chicks expected from eggs sold the preceding month. The breeders in this report account for a large percentage of replacement pullets for hatchery supply flocks. Production of replacement pullets by these breeders indicates the number of pullets available to hatchery supply layer flocks several months before the pullets will actually move into the laying flocks. "Hatchery Supply Flocks" include all generations of layers which could lay eggs to supply a hatchery. This includes the generations of parents, grandparents, great-grandparents, pedigree, etc. Also included are research flocks, vaccine flocks, and specific pathogen-free flocks. The broiler cumulative potential placements are a moving total of the intended placements 7-15 months earlier. The egg-type cumulative potential placements of 7-18 months earlier represent the first laying cycle. Molting and additional laying cycles will increase the cumulative potential placements of egg-type hatching flocks.

Revision Policy: The previous month's estimates are subject to revision if late reports or corrected data indicates a different level. Additionally, revisions after the monthly report will be made at the end of the marketing year and published in the annual reports of *Chickens and Eggs Summary* and *Hatchery Production Summary*. Estimates will also be reviewed for chickens and eggs after data from the 5-year Census of Agriculture are available. No revisions will be made after that date.

Reliability: Estimates are based on a census of all known contractors and independent producers who have at least 30,000 table egg layers, flocks of hatchery supply layers, pullet only operations with at least 500 pullets, or operating hatcheries and therefore, have no sampling error. However, estimates are subject to errors such as omission, duplication, and mistakes in reporting, recording, and processing the data. While these errors cannot be measured directly, they are minimized through strict quality controls in the data collection process and a careful review of all reported data for consistency and reasonableness.

To assist in evaluating the reliability of the estimates in this report, the "Root Mean Square Error" is shown for selected items in the following table. The "Root Mean Square Error" is a statistical measure based on past performance and is computed using the differences between first and final estimates. The "Root Mean Square Error" for all layers over the past 24 months is 0.3 percent. This means that chances are 2 out of 3 that the final estimate will not be above or below the current estimate of 335 million layers by more than 0.3 percent. Chances are 9 out of 10 that the difference will not exceed 0.4 percent.

Reliability of Layer and Egg Estimates

[Based on data for the past twenty-four months]

Item	Root mean square error	90 percent confidence level	Difference between first and latest estimate				
			Average	Smallest	Largest	Months	
						Below latest	Above latest
All layers	(percent) 0.3	(percent) 0.4	(1,000) 568	(1,000) 25	(1,000) 1,904	(number) 16	(number) 8
Eggs	0.2	0.4	(million) 12	(million) 1	(million) 39	17	7

Regional Listing

- North Atlantic:** Connecticut, Maine, Massachusetts, New Hampshire, New Jersey, New York, Pennsylvania, Rhode Island, Vermont.
- East North Central:** Illinois, Indiana, Michigan, Ohio, Wisconsin.
- West North Central:** Iowa, Kansas, Minnesota, Missouri, Nebraska, North Dakota, South Dakota.
- South Atlantic:** Delaware, Florida, Georgia, Maryland, North Carolina, South Carolina, Virginia, West Virginia.
- South Central:** Alabama, Arkansas, Kentucky, Louisiana, Mississippi, Oklahoma, Tennessee, Texas.
- West:** Alaska, Arizona, California, Colorado, Hawaii, Idaho, Montana, New Mexico, Nevada, Oregon, Utah, Washington, Wyoming.

Terms and Definitions of Chickens and Eggs Estimates

All Layers includes both table egg and hatching egg flocks regardless of size.

Intended Placements are reported by leading breeders. Coverage may not be 100 percent. Includes expected pullet chicks from eggs sold during the preceding month at the rate of 125 pullet chicks per case of 30 dozen eggs.

Information Contacts

Listed below are the commodity specialists in the Livestock Branch of the National Agricultural Statistics Service to contact for additional information. E-mail inquiries may be sent to nass@nass.usda.gov

- Dan Kerestes, Chief, Livestock Branch (202) 720-3570
- Bruce Boess, Head, Poultry and Specialty Commodities Section (202) 720-4447
- Cody Brokmeyer – Poultry Slaughter, Turkey Hatchery, Turkeys Raised (202) 690-3237
- David Colwell – Cold Storage (202) 720-8784
- LaKeya Jones – Catfish Processing, Catfish Production, Trout Production,
 Census of Aquaculture, Honey, Egg Products, Mink (202) 720-0585
- Kim Linonis – Layers, Eggs (202) 690-8632
- Miste Salmon – Broiler Hatchery, Chicken Hatchery (202) 720-3244

Access to NASS Reports

For your convenience, you may access NASS reports and products the following ways:

- All reports are available electronically, at no cost, on the NASS web site: <http://www.nass.usda.gov>
- Both national and state specific reports are available via a free e-mail subscription. To set-up this free subscription, visit <http://www.nass.usda.gov> and in the “Follow NASS” box under “Receive reports by Email,” click on “National” or “State” to select the reports you would like to receive.
- Printed reports may be purchased from the National Technical Information Service (NTIS) by calling toll-free (800) 999-6779, or (703) 605-6220 if calling from outside the United States or Canada. Accepted methods of payment are Visa, MasterCard, check, or money order.

For more information on NASS surveys and reports, call the NASS Agricultural Statistics Hotline at (800) 727-9540, 7:30 a.m. to 4:00 p.m. ET, or e-mail: nass@nass.usda.gov.

The United States Department of Agriculture (USDA) prohibits discrimination in all its programs and activities on the basis of race, color, national origin, age, disability, and where applicable, sex, marital status, familial status, parental status, religion, sexual orientation, political beliefs, genetic information, reprisal, or because all or a part of an individual's income is derived from any public assistance program. (Not all prohibited bases apply to all programs.) Persons with disabilities who require alternative means for communication of program information (Braille, large print, audiotape, etc.) should contact USDA's TARGET Center at (202) 720-2600 (voice and TDD).

To file a complaint of discrimination, write to USDA, Assistant Secretary for Civil Rights, Office of the Assistant Secretary for Civil Rights, 1400 Independence Avenue, S.W., Stop 9410, Washington, DC 20250-9410, or call toll-free at (866) 632-9992 (English) or (800) 877-8339 (TDD) or (866) 377-8642 (English Federal-relay) or (800) 845-6136 (Spanish Federal-relay). USDA is an equal opportunity provider and employer.