



Chickens and Eggs

ISSN: 1948-9064

Released September 21, 2012, by the National Agricultural Statistics Service (NASS), Agricultural Statistics Board, United States Department of Agriculture (USDA).

August Egg Production Up 1 Percent

United States egg production totaled 7.80 billion during August 2012, up 1 percent from last year. Production included 6.76 billion table eggs, and 1.04 billion hatching eggs, of which 971 million were broiler-type and 69 million were egg-type. The total number of layers during August 2012 averaged 335 million, up slightly from last year. August egg production per 100 layers was 2,324 eggs, up 1 percent from August 2011.

All layers in the United States on September 1, 2012 totaled 336 million, up slightly from last year. The 336 million layers consisted of 284 million layers producing table or market type eggs, 49.8 million layers producing broiler-type hatching eggs, and 2.84 million layers producing egg-type hatching eggs. Rate of lay per day on September 1, 2012, averaged 75.1 eggs per 100 layers, up 1 percent from September 1, 2011.

Egg-Type Chicks Hatched Down Slightly

Egg-type chicks hatched during August 2012 totaled 41.4 million, down slightly from August 2011. Eggs in incubators totaled 36.8 million on September 1, 2012, down 6 percent from a year ago.

Domestic placements of egg-type pullet chicks for future hatchery supply flocks by leading breeders totaled 234 thousand during August 2012, down 26 percent from August 2011.

Broiler-Type Chicks Hatched Down Slightly

Broiler-type chicks hatched during August 2012 totaled 758 million, down slightly from August 2011. Eggs in incubators totaled 596 million on September 1, 2012, down 1 percent from a year earlier.

Leading breeders placed 7.05 million broiler-type pullet chicks for future domestic hatchery supply flocks during August 2012, down 3 percent from August 2011.

This page intentionally left blank.

Contents

Average Number of All Layers on Hand During the Month – United States: 2011-2012.....	4
Egg Production During the Month by Type – United States: 2011-2012.....	4
Average Number of Layers During the Month – United States.....	5
All Egg Production During the Month – United States	5
Layers on Hand and Eggs Produced by Type and Forced Molt – United States: July-August 2011 and 2012.....	6
Layers on Hand and Eggs Produced by Type and Forced Molt – United States: August-September 2011 and 2012.....	7
Layers on Hand and Eggs Produced – States and United States: During July 2011 and 2012.....	8
Layers on Hand and Eggs Produced – States and United States: During August 2011 and 2012	9
Egg Production by Type – States and United States: July 2011 and 2012	10
Egg Production by Type – States and United States: August 2011 and 2012.....	11
Forced Molt as Percent of All Layers by Month – United States: 2011-2012.....	12
Forced Molt as Percent of All Layers – States and United States: September 1, 2011 and 2012.....	12
Hatchery Production – United States: 2011 and 2012	13
Egg-Type Eggs in Incubators – Regions and United States: September 1, 2011 and 2012.....	14
Egg-Type Chicks Hatched by Month – United States: 2011-2012.....	14
Intended Placements of Egg-Type Pullet Chicks for Hatchery Supply Flocks by Month – United States: 2011-2012.....	15
Broiler-Type Eggs in Incubators – Regions and United States: September 1, 2011 and 2012.....	15
Broiler-Type Chicks Hatched – States and United States: August 2011 and 2012	16
Broiler-Type Chicks Hatched by Month – United States: 2011-2012.....	16
Intended Placements of Broiler-Type Pullet Chicks for Hatchery Supply Flocks by Month and Total: 2011-2012.....	17
Statistical Methodology	18
Regional Listing.....	19
Terms and Definitions of Chickens and Eggs Estimates	19
Information Contacts	19

Average Number of All Layers on Hand During the Month – United States: 2011-2012

[Blank data cells indicate estimation period has not yet begun]

Month	2011		2012	
	(1,000 layers)		(1,000 layers)	
December ¹		343,083		338,158
January		342,266		337,618
February		339,787		338,151
March		340,655		339,626
April		340,896		339,517
May		337,897		338,447
June		336,411		336,787
July		335,799		335,020
August		335,412		335,497
September		335,328		
October		335,884		
November		337,716		

¹ December preceding year.

Egg Production During the Month by Type – United States: 2011-2012

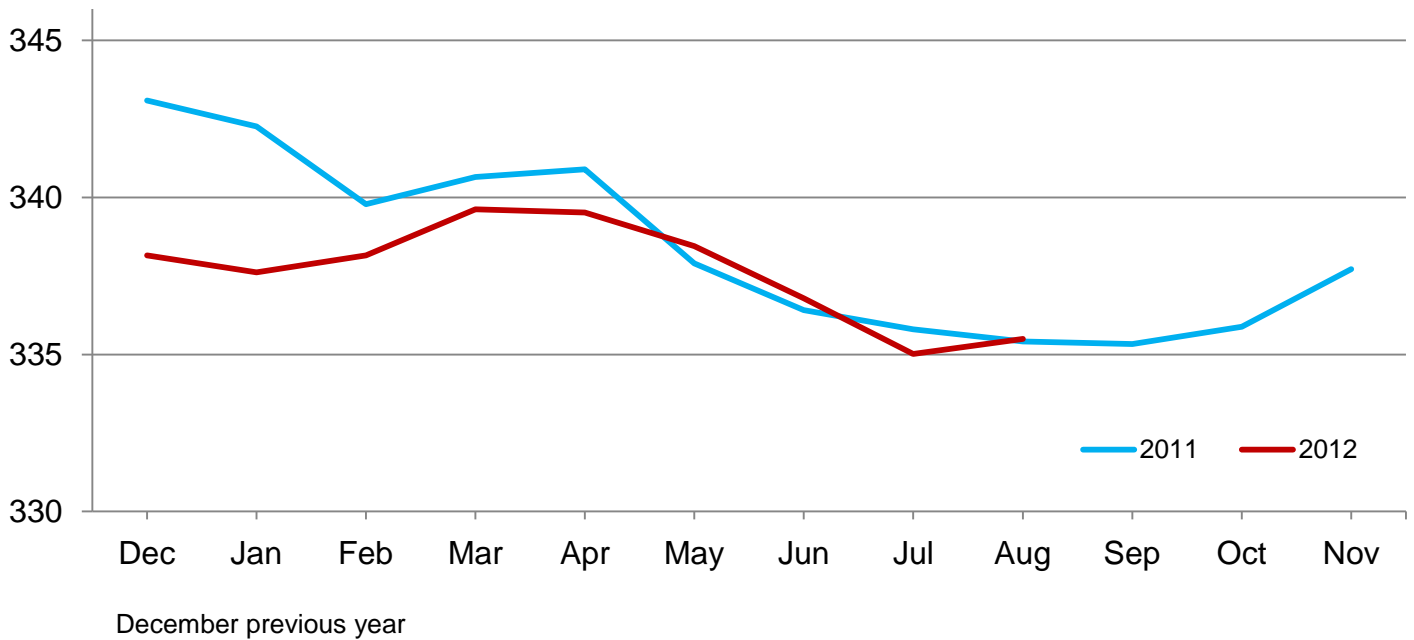
[Totals may not add due to rounding. Blank data cells indicate estimation period has not yet begun]

Month	Total eggs		Table eggs		Hatching eggs	
	2011	2012	2011	2012	2011	2012
	(million eggs)	(million eggs)	(million eggs)	(million eggs)	(million eggs)	(million eggs)
December ¹	7,927	7,932	6,845	6,894	1,083	1,038
January	7,833	7,831	6,736	6,786	1,098	1,046
February	7,013	7,235	6,022	6,247	990	987
March	7,840	7,859	6,735	6,800	1,106	1,059
April	7,617	7,582	6,534	6,545	1,083	1,038
May	7,773	7,770	6,651	6,693	1,123	1,078
June	7,503	7,501	6,421	6,470	1,083	1,032
July	7,732	7,727	6,633	6,677	1,100	1,051
August	7,719	7,797	6,644	6,758	1,076	1,040
September	7,503		6,476		1,028	
October	7,783		6,734		1,050	
November	7,612		6,605		1,007	
During year	91,855		79,036		12,827	

¹ December preceding year.

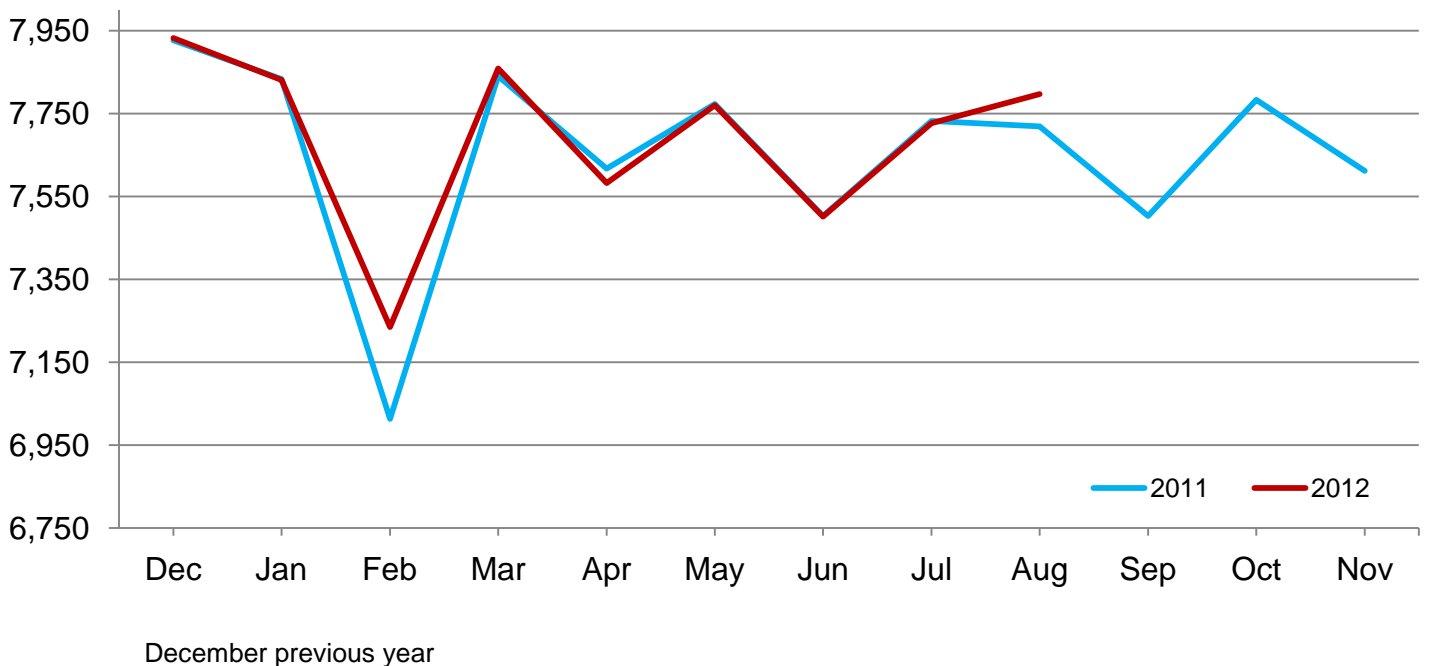
Average Layers During the Month – United States

Million layers



All Egg Production During the Month – United States

Million eggs



**Layers on Hand and Eggs Produced by Type and Forced Molt – United States:
July-August 2011 and 2012**

[Totals may not add due to rounding]

Item	2011	2012	2012 as percent of 2011
Layers during July			
All layers 1,000	335,799	335,020	100
Table egg type 1,000	278,675	281,146	101
Hatching egg type 1,000	57,124	53,874	94
Broiler-type hatching 1,000	54,292	51,072	94
Egg-type hatching 1,000	2,832	2,802	99
Eggs per 100 layers during July			
All layers number	2,303	2,306	100
Table egg type number	2,380	2,375	100
Hatching egg type number	1,926	1,951	101
Broiler-type hatching number	1,899	1,925	101
Egg-type hatching number	2,436	2,427	100
Eggs produced during July			
All layers million	7,732	7,727	100
Table egg type million	6,633	6,677	101
Hatching egg type million	1,100	1,051	96
Broiler-type hatching million	1,031	983	95
Egg-type hatching million	69	68	99
Layers on August 1			
All layers 1,000	334,997	334,683	100
Table egg type 1,000	278,545	281,262	101
Hatching egg type 1,000	56,452	53,421	95
Broiler-type hatching 1,000	53,623	50,631	94
Egg-type hatching 1,000	2,829	2,790	99
Eggs per 100 layers on August 1			
All layers number	74.2	74.7	101
Table egg type number	76.6	76.9	100
Hatching egg type number	62.1	63.1	102
Broiler-type hatching number	61.3	62.2	101
Egg-type hatching number	77.4	79.7	103
Forced molt layers on August 1			
Being molted percent	3.6	2.4	67
Molt completed percent	19.5	20.6	106
Layers sold for slaughter during July 1,000	14,780	14,246	96
Layers rendered, died, destroyed, composted or disappeared for any reason during July 1,000	8,804	7,463	85
Pullets on August 1 1,000	105,189	105,363	100
Pullets added during July ¹ 1,000	21,721	19,640	90

¹ Pullet chicks less than 3 days old added to pullet flocks.

**Layers on Hand and Eggs Produced by Type and Forced Molt – United States:
August-September 2011 and 2012**

[Totals may not add due to rounding]

Item	2011	2012	2012 as percent of 2011
Layers during August			
All layers 1,000	335,412	335,497	100
Table egg type 1,000	279,734	282,473	101
Hatching egg type 1,000	55,678	53,024	95
Broiler-type hatching 1,000	52,743	50,206	95
Egg-type hatching 1,000	2,935	2,818	96
Eggs per 100 layers during August			
All layers number	2,301	2,324	101
Table egg type number	2,375	2,392	101
Hatching egg type number	1,933	1,961	101
Broiler-type hatching number	1,909	1,934	101
Egg-type hatching number	2,351	2,449	104
Eggs produced during August			
All layers million	7,719	7,797	101
Table egg type million	6,644	6,758	102
Hatching egg type million	1,076	1,040	97
Broiler-type hatching million	1,007	971	96
Egg-type hatching million	69	69	100
Layers on September 1			
All layers 1,000	335,794	336,276	100
Table egg type 1,000	280,911	283,666	101
Hatching egg type 1,000	54,883	52,610	96
Broiler-type hatching 1,000	51,848	49,770	96
Egg-type hatching 1,000	3,035	2,840	94
Eggs per 100 layers on September 1			
All layers number	74.4	75.1	101
Table egg type number	76.7	77.3	101
Hatching egg type number	62.3	63.1	101
Broiler-type hatching number	61.5	62.3	101
Egg-type hatching number	75.0	78.0	104
Forced molt layers on September 1			
Being molted percent	3.2	2.9	91
Molt completed percent	20.3	19.8	98
Layers sold for slaughter during August 1,000	13,308	14,751	111
Layers rendered, died, destroyed, composted or disappeared for any reason during August 1,000	7,441	7,747	104
Pullets on September 1 1,000	103,770	104,891	101
Pullets added during August ¹ 1,000	21,238	24,468	115

¹ Pullet chicks less than 3 days old added to pullet flocks.

Layers on Hand and Eggs Produced – States and United States: During July 2011 and 2012

State	Table egg layers in flocks 30,000 and above		All layers		Eggs per 100 for all layers	
	2011	2012	2011	2012	2011	2012
	(1,000 layers)	(1,000 layers)	(1,000 layers)	(1,000 layers)	(eggs)	(eggs)
Alabama	1,278	1,539	9,028	9,092	1,949	2,013
Arkansas	3,438	3,672	12,399	12,216	2,089	2,137
California	18,685	19,207	18,985	19,556	2,391	2,352
Colorado	3,918	3,787	4,386	4,201	2,371	2,523
Connecticut	2,222	2,266	2,295	2,335	2,397	2,441
Florida	9,040	8,044	9,416	8,372	2,326	2,293
Georgia	7,386	8,315	16,192	16,750	2,143	2,137
Illinois	4,205	4,083	4,422	4,333	2,397	2,308
Indiana	22,354	23,621	23,019	24,299	2,355	2,313
Iowa	51,457	50,790	52,324	51,752	2,349	2,350
Maine	3,482	3,452	3,537	3,507	2,347	2,367
Maryland	1,745	2,111	1,867	2,225	2,250	2,382
Michigan	9,996	11,453	10,147	11,603	2,513	2,508
Minnesota	9,618	9,807	10,111	10,232	2,364	2,355
Mississippi	1,355	1,460	5,924	5,719	2,076	2,098
Missouri	5,835	5,484	7,351	6,937	2,313	2,335
Nebraska	9,089	9,072	9,139	9,122	2,484	2,499
New York	4,092	4,140	4,325	4,373	2,428	2,515
North Carolina	5,644	5,623	13,209	12,678	2,052	1,988
Ohio	27,065	26,273	27,551	26,809	2,301	2,290
Oregon	2,141	2,027	2,273	2,185	2,420	2,609
Pennsylvania	23,607	22,467	24,800	23,533	2,492	2,507
South Carolina	3,204	3,013	4,502	4,268	2,221	2,226
South Dakota	2,297	2,032	2,337	2,072	2,525	2,510
Texas	13,776	14,887	17,961	18,670	2,272	2,266
Utah	3,499	3,611	3,529	3,641	2,267	2,362
Virginia	1,152	1,180	2,979	2,986	2,014	2,076
Washington	6,549	6,601	6,664	6,716	2,446	2,367
Wisconsin	4,102	4,364	4,671	4,969	2,248	2,375
Other States ¹	11,884	12,162	20,456	19,869	2,171	2,194
United States	274,115	276,543	335,799	335,020	2,303	2,306

¹ Includes data for States not published in this table.

Layers on Hand and Eggs Produced – States and United States: During August 2011 and 2012

State	Table egg layers in flocks 30,000 and above		All layers		Eggs per 100 for all layers	
	2011	2012	2011	2012	2011	2012
	(1,000 layers)	(1,000 layers)	(1,000 layers)	(1,000 layers)	(eggs)	(eggs)
Alabama	1,274	1,525	9,002	9,082	1,955	2,048
Arkansas	3,400	3,620	12,190	12,034	2,084	2,152
California	18,714	19,345	19,013	19,697	2,377	2,356
Colorado	4,055	3,770	4,511	4,221	2,283	2,511
Connecticut	2,191	2,238	2,263	2,305	2,475	2,516
Florida	9,085	8,188	9,473	8,507	2,354	2,363
Georgia	7,383	8,456	16,141	16,767	2,150	2,153
Illinois	4,098	3,936	4,310	4,197	2,390	2,383
Indiana	22,229	23,681	22,931	24,358	2,351	2,307
Iowa	51,932	50,976	52,871	51,927	2,328	2,371
Maine	3,506	3,475	3,561	3,530	2,303	2,295
Maryland	1,760	2,254	1,885	2,363	2,175	2,412
Michigan	9,839	11,814	9,991	11,964	2,452	2,424
Minnesota	9,584	9,741	10,081	10,163	2,331	2,411
Mississippi	1,359	1,461	5,783	5,545	2,092	2,128
Missouri	5,931	5,325	7,354	6,768	2,352	2,408
Nebraska	8,923	8,966	8,973	9,016	2,530	2,507
New York	4,130	4,168	4,365	4,400	2,474	2,523
North Carolina	5,458	5,734	12,491	12,595	2,090	2,048
Ohio	27,204	26,316	27,705	26,842	2,292	2,321
Oregon	2,235	2,146	2,380	2,304	2,437	2,648
Pennsylvania	24,090	22,700	25,250	23,778	2,436	2,481
South Carolina	3,183	2,984	4,420	4,206	2,308	2,330
South Dakota	2,341	2,207	2,381	2,247	2,604	2,537
Texas	14,036	14,934	18,101	18,685	2,282	2,301
Utah	3,527	3,614	3,557	3,644	2,390	2,415
Virginia	1,215	1,123	2,897	2,853	2,106	2,103
Washington	6,688	6,611	6,803	6,726	2,396	2,334
Wisconsin	3,986	4,341	4,559	4,946	2,369	2,406
Other States ¹	11,818	12,221	20,170	19,827	2,181	2,204
United States	275,174	277,870	335,412	335,497	2,301	2,324

¹ Includes data for States not published in this table.

Egg Production by Type – States and United States: July 2011 and 2012

[Totals may not add due to rounding. Data by type of flock not shown for some States to avoid disclosing individual operations, data included in United States totals]

State	Total production		Table eggs		Hatching eggs	
	2011	2012	2011	2012	2011	2012
	(million eggs)	(million eggs)	(million eggs)	(million eggs)	(million eggs)	(million eggs)
Alabama	176	183	30	38	146	145
Arkansas	259	261	84	92	175	169
California	454	460	(D)	(D)	(D)	(D)
Colorado	104	106	(D)	(D)	(D)	(D)
Connecticut	55	57	(D)	(D)	(D)	(D)
Florida	219	192	213	187	6	5
Georgia	347	358	177	194	170	164
Illinois	106	100	103	96	3	4
Indiana	542	562	530	549	12	13
Iowa	1,229	1,216	1,216	1,200	13	16
Maine	83	83	(D)	(D)	(D)	(D)
Maryland	42	53	40	52	2	1
Michigan	255	291	(D)	(D)	(D)	(D)
Minnesota	239	241	231	234	8	7
Mississippi	123	120	35	36	88	84
Missouri	170	162	(D)	(D)	(D)	(D)
Nebraska	227	228	227	228	-	-
New York	105	110	(D)	(D)	(D)	(D)
North Carolina	271	252	133	126	138	126
Ohio	634	614	(D)	(D)	(D)	(D)
Oregon	55	57	53	55	2	2
Pennsylvania	618	590	597	572	21	18
South Carolina	100	95	78	72	22	23
South Dakota	59	52	59	52	-	-
Texas	408	423	(D)	(D)	(D)	(D)
Utah	80	86	80	86	-	-
Virginia	60	62	25	28	35	34
Washington	163	159	(D)	(D)	(D)	(D)
Wisconsin	105	118	(D)	(D)	(D)	(D)
Other States ¹	444	436	308	315	137	122
United States	7,732	7,727	6,633	6,677	1,100	1,051

- Represents zero.

(D) Withheld to avoid disclosing data for individual operations.

¹ Includes data for States not published in this table.

Egg Production by Type – States and United States: August 2011 and 2012

[Totals may not add due to rounding. Data by type of flock not shown for some States to avoid disclosing individual operations, data included in United States totals]

State	Total production		Table eggs		Hatching eggs	
	2011	2012	2011	2012	2011	2012
	(million eggs)	(million eggs)	(million eggs)	(million eggs)	(million eggs)	(million eggs)
Alabama	176	186	29	38	147	148
Arkansas	254	259	85	92	169	167
California	452	464	(D)	(D)	(D)	(D)
Colorado	103	106	(D)	(D)	(D)	(D)
Connecticut	56	58	(D)	(D)	(D)	(D)
Florida	223	201	217	196	6	5
Georgia	347	361	178	199	169	162
Illinois	103	100	100	96	3	4
Indiana	539	562	527	550	12	12
Iowa	1,231	1,231	1,217	1,215	14	16
Maine	82	81	(D)	(D)	(D)	(D)
Maryland	41	57	40	56	1	1
Michigan	245	290	(D)	(D)	(D)	(D)
Minnesota	235	245	226	238	9	7
Mississippi	121	118	35	37	86	81
Missouri	173	163	(D)	(D)	(D)	(D)
Nebraska	227	226	227	226	-	-
New York	108	111	(D)	(D)	(D)	(D)
North Carolina	261	258	130	135	131	123
Ohio	635	623	(D)	(D)	(D)	(D)
Oregon	58	61	56	58	2	3
Pennsylvania	615	590	595	572	20	18
South Carolina	102	98	80	76	22	22
South Dakota	62	57	(D)	57	-	-
Texas	413	430	(D)	(D)	(D)	(D)
Utah	85	88	85	88	-	-
Virginia	61	60	29	28	32	32
Washington	163	157	(D)	(D)	(D)	(D)
Wisconsin	108	119	(D)	(D)	(D)	(D)
Other States ¹	440	437	306	317	135	121
United States	7,719	7,797	6,644	6,758	1,076	1,040

- Represents zero.

(D) Withheld to avoid disclosing data for individual operations.

¹ Includes data for States not published in this table.

Forced Molt as Percent of All Layers by Month – United States: 2011-2012

[As of the first of the month. Blank data cells indicate estimation period has not yet begun]

Month	Being molted		Molt completed	
	2011 (percent)	2012 (percent)	2011 (percent)	2012 (percent)
January	2.8	2.8	21.2	19.9
February	3.6	4.8	20.2	18.8
March	3.0	3.8	20.1	19.9
April	2.6	2.8	20.0	19.7
May	3.0	4.3	20.0	19.6
June	3.8	2.9	19.5	20.3
July	3.5	2.9	19.6	20.4
August	3.6	2.4	19.5	20.6
September	3.2	2.9	20.3	19.8
October	3.9		20.4	
November	2.5		21.2	
December	1.7		21.1	

Forced Molt as Percent of All Layers – States and United States: September 1, 2011 and 2012

[As of the first of the month]

State	Being molted		Molt completed	
	2011 (percent)	2012 (percent)	2011 (percent)	2012 (percent)
Alabama	1.0	1.0	8.0	7.0
Arkansas	2.0	-	6.5	9.5
California	4.5	2.0	28.0	30.5
Colorado	1.0	4.0	19.5	34.5
Connecticut	-	-	9.5	9.5
Florida	5.5	2.5	36.0	40.5
Georgia	0.5	2.0	17.5	13.5
Illinois	2.0	-	28.5	22.5
Indiana	3.0	2.5	30.0	30.5
Iowa	4.5	4.5	33.0	27.5
Maine	-	-	-	-
Maryland	5.0	0.5	7.5	5.0
Michigan	6.0	4.5	14.0	11.0
Minnesota	6.0	3.5	26.0	23.5
Mississippi	1.0	1.0	11.5	10.5
Missouri	-	1.5	19.0	20.0
Nebraska	0.5	1.0	1.5	1.0
New York	-	0.5	7.0	15.0
North Carolina	0.5	2.0	14.0	14.5
Ohio	2.5	3.0	13.0	11.5
Oregon	4.0	8.5	32.0	30.0
Pennsylvania	3.0	3.0	10.0	9.0
South Carolina	2.0	-	19.0	18.5
South Dakota	0.5	4.0	14.5	21.0
Texas	3.5	3.5	20.5	24.0
Utah	5.5	4.5	42.0	34.0
Virginia	3.5	7.0	13.0	12.0
Washington	12.0	4.0	27.5	30.5
Wisconsin	5.5	11.0	27.5	24.5
Other States ¹	3.1	2.4	15.2	18.1
United States	3.2	2.9	20.3	19.8

- Represents zero.

¹ Includes data for States not published in this table.

Hatchery Production – United States: 2011 and 2012

Item	2011	2012	2012 as percent of 2011
	(1,000)	(1,000)	(percent)
Egg-type			
Eggs in incubators on September 1	38,956	36,797	94
Chicks hatched during August	41,431	41,357	100
Chicks hatched January through August	324,817	317,989	98
Pullets hatched during August for intended placements:			
Hatchery supply flocks	318	234	74
Cumulative potential placements 7-18 months earlier ¹	2,974	3,110	105
Broiler-type			
Eggs in incubators on September 1	599,241	596,031	99
Chicks hatched during August	758,980	758,292	100
Chicks hatched January through August	6,159,933	6,023,898	98
Pullets hatched during August for intended placements:			
Hatchery supply flocks	7,233	7,046	97
Cumulative potential placements 7-15 months earlier ²	64,388	61,556	96

¹ 2012 includes pullet chicks hatched February 2011 through January 2012.

² 2012 includes pullet chicks hatched May 2011 through January 2012.

Egg-Type Eggs in Incubators – Regions and United States: September 1, 2011 and 2012

[See regional listing on page 19]

Region	2011	2012	2012 as percent of 2011
	(1,000 eggs)	(1,000 eggs)	(percent)
North Atlantic	6,073	3,663	60
East North Central	6,740	6,579	98
West North Central	8,572	9,628	112
South Atlantic	4,885	4,959	102
South Central	4,722	5,087	108
West	7,964	6,881	86
United States	38,956	36,797	94

Egg-Type Chicks Hatched by Month – United States: 2011-2012

[Blank data cells indicate estimation period has not yet begun]

Month	By months			Cumulative		
	2011	2012	2012 as percent of 2011	2011	2012	2012 as percent of 2011
	(1,000 chicks)	(1,000 chicks)	(percent)	(1,000 chicks)	(1,000 chicks)	(percent)
January	40,590	40,277	99	40,590	40,277	99
February	37,415	39,300	105	78,005	79,577	102
March	43,603	40,622	93	121,608	120,199	99
April	42,959	39,702	92	164,567	159,901	97
May	42,949	43,280	101	207,516	203,181	98
June	38,920	39,410	101	246,436	242,591	98
July	36,950	34,041	92	283,386	276,632	98
August	41,431	41,357	100	324,817	317,989	98
September	39,805			364,622		
October	37,624			402,246		
November	37,512			439,758		
December	39,071			478,829		

Intended Placements of Egg-Type Pullet Chicks for Hatchery Supply Flocks by Month – United States: 2011-2012

[Blank data cells indicate estimation period has not yet begun]

Month	Pullet chicks hatched		2012 as percent of 2011	Cumulative potential placements relative to current supply flocks 7-18 months earlier ¹	
	2011	2012		2012	2013
	(1,000 chicks)	(1,000 chicks)	(percent)	(1,000 chicks)	(1,000 chicks)
January	220	263	120	2,920	2,834
February	244	238	98	2,936	2,871
March	253	210	83	3,001	2,787
April	287	137	48	3,002	
May	196	302	154	3,098	
June	302	119	39	3,053	
July	234	271	116	3,067	
August	318	234	74	3,110	
September	252			3,104	
October	266			3,061	
November	218			2,911	
December	277			3,017	
Total	3,067				

¹ For August 2012, includes breeder pullet chicks hatched February 2011 through January 2012. The 7-18 months represent the first laying cycle. Molting and additional laying cycles will increase the cumulative potential placements.

Broiler-Type Eggs in Incubators – Regions and United States: September 1, 2011 and 2012

[See regional listing on page 19]

Region	2011	2012	2012 as percent of 2011
	(1,000 eggs)	(1,000 eggs)	(percent)
North Atlantic	12,067	12,065	100
East North Central	12,252	12,719	104
West North Central	28,203	29,018	103
South Atlantic	227,128	228,274	101
South Central	295,871	293,427	99
West	23,720	20,528	87
United States	599,241	596,031	99

Broiler-Type Chicks Hatched – States and United States: August 2011 and 2012

State	During August			January-August		
	2011	2012	2012 as percent of 2011	2011	2012	2012 as percent of 2011
	(1,000 chicks)	(1,000 chicks)	(percent)	(1,000 chicks)	(1,000 chicks)	(percent)
Alabama	103,463	104,295	101	859,409	826,358	96
Arkansas	77,751	77,431	100	670,660	614,987	92
Delaware	11,228	12,809	114	105,173	100,777	96
Florida	4,945	4,911	99	38,521	38,298	99
Georgia	118,289	118,845	100	958,316	943,246	98
Kentucky	28,639	28,680	100	224,062	221,995	99
Louisiana	12,601	12,150	96	98,435	101,397	103
Maryland	28,029	27,562	98	222,123	215,293	97
Mississippi	68,507	66,907	98	549,328	532,381	97
Missouri	29,517	29,903	101	228,585	231,540	101
North Carolina	74,016	73,103	99	579,545	588,679	102
Oklahoma	24,142	24,065	100	199,239	196,842	99
Pennsylvania	14,284	13,300	93	112,184	108,860	97
South Carolina	19,140	19,268	101	153,682	151,362	98
Texas	54,962	54,260	99	442,489	434,910	98
Virginia	22,166	23,024	104	180,382	181,707	101
California, Tennessee, and West Virginia	41,003	40,224	98	330,864	319,768	97
19 States ¹	732,682	730,737	100	5,952,997	5,808,400	98
Other States ²	26,298	27,555	105	206,936	215,498	104
United States	758,980	758,292	100	6,159,933	6,023,898	98

¹ States in the weekly hatchery production estimating program.

² Not published separately to avoid disclosing data for individual operations.

Broiler-Type Chicks Hatched by Month – United States: 2011-2012

[Blank data cells indicate estimation period has not yet begun]

Month	By months			Cumulative		
	2011	2012	2012 as percent of 2011	2011	2012	2012 as percent of 2011
	(1,000 chicks)	(1,000 chicks)	(percent)	(1,000 chicks)	(1,000 chicks)	(percent)
January	781,313	751,870	96	781,313	751,870	96
February	708,722	705,113	99	1,490,035	1,456,983	98
March	793,765	764,225	96	2,283,800	2,221,208	97
April	777,866	747,697	96	3,061,666	2,968,905	97
May	804,484	777,636	97	3,866,150	3,746,541	97
June	766,371	756,316	99	4,632,521	4,502,857	97
July	768,432	762,749	99	5,400,953	5,265,606	97
August	758,980	758,292	100	6,159,933	6,023,898	98
September	719,606			6,879,539		
October	715,886			7,595,425		
November	702,169			8,297,594		
December	758,382			9,055,976		

Intended Placements of Broiler-Type Pullet Chicks for Hatchery Supply Flocks by Month and Total: 2011-2012

[Blank data cells indicate estimation period has not yet begun]

Month	Pullet chicks hatched		2012 as percent of 2011	Cumulative potential placements relative to current supply flocks 7-15 months earlier ¹	
	2011 (1,000 chicks)	2012 (1,000 chicks)		2012 (1,000 chicks)	2013 (1,000 chicks)
United States placements					
January	6,557	6,673	102	64,111	60,864
February	7,284	7,025	96	63,679	60,646
March	7,058	6,753	96	63,323	60,802
April	7,044	6,524	93	63,209	
May	7,721	7,472	97	62,941	
June	7,211	6,800	94	62,547	
July	6,444	6,071	94	61,927	
August	7,233	7,046	97	61,556	
September	6,657			60,860	
October	6,289			60,402	
November	6,890			60,482	
December	6,438			60,721	
Annual total	82,826				
Total placements ²					
January	8,187	8,201	100		
February	8,931	8,818	99		
March	9,023	8,525	94		
April	8,944	8,232	92		
May	9,612	9,430	98		
June	9,225	8,554	93		
July	8,131	7,447	92		
August	8,700	8,593	99		
September	8,546				
October	7,938				
November	8,489				
December	8,279				
Annual total	104,005				

¹ For August 2012, includes breeder pullet chicks hatched May 2011 through January 2012.

² United States production of intended placements worldwide.

Statistical Methodology

Survey Procedures: Primary data for the *Chickens and Eggs* report are from weekly and/or monthly questionnaires sent to producers. An attempt is made to collect information for layer and egg estimates from each known contractor and independent producer who has at least 30,000 table egg layers, flocks of hatchery supply layers, or pullet only operations with at least 500 pullets. Coverage for operations with less than 30,000 table egg layers are estimated each month based on data reported in December. Approximately 650 contractors, independent egg producers, and pullet only operations are contacted each month. All known hatcheries, approximately 300, are contacted for information on a weekly and/or monthly basis.

Estimating Procedures: Sound statistical methodology is employed to derive estimates from the reported data. All data are analyzed for unusual values. Data from each operation are compared to their own past operating profile and to trends from similar operations. Data for missing operations are estimated based on similar operations or historical data. NASS field offices prepare these estimates by using a combination of survey indications and historic trends. Individual State estimates are reviewed by the Agricultural Statistics Board for reasonableness. Individual hatchery data are summed to State, regional, and United States totals.

For chicken hatcheries, chicks hatched consist of all chicks of domesticated breeds including males and chicks destined for hatchery supply flocks and research purposes. Eggs set are eggs in incubators for the purpose of hatching. The relationship of egg-type chicks hatched to chicken inventory and poultry marketings are carefully monitored. The disposition of egg-type chicks hatched prior to placement into the laying flock can vary significantly, which can make comparisons to changes in layer inventory inconsistent over time. Broiler chicks placed are specifically placed on feed for meat production. Intended placement data reported by leading breeders include pullet chicks expected from eggs sold the preceding month. The breeders in this report account for a large percentage of replacement pullets for hatchery supply flocks. Production of replacement pullets by these breeders indicates the number of pullets available to hatchery supply layer flocks several months before the pullets will actually move into the laying flocks. "Hatchery Supply Flocks" include all generations of layers which could lay eggs to supply a hatchery. This includes the generations of parents, grandparents, great-grandparents, pedigree, etc. Also included are research flocks, vaccine flocks, and specific pathogen-free flocks. The broiler cumulative potential placements are a moving total of the intended placements 7-15 months earlier. The egg-type cumulative potential placements of 7-18 months earlier represent the first laying cycle. Molting and additional laying cycles will increase the cumulative potential placements of egg-type hatching flocks.

Revision Policy: The previous month's estimates are subject to revision if late reports or corrected data indicates a different level. Additionally, revisions after the monthly report will be made at the end of the marketing year and published in the annual reports of *Chickens and Eggs Summary* and *Hatchery Production Summary*. Estimates will also be reviewed for chickens and eggs after data from the 5-year Census of Agriculture are available. No revisions will be made after that date.

Reliability: Estimates are based on a census of all known contractors and independent producers who have at least 30,000 table egg layers, flocks of hatchery supply layers, pullet only operations with at least 500 pullets, or operating hatcheries and therefore, have no sampling error. However, estimates are subject to errors such as omission, duplication, and mistakes in reporting, recording, and processing the data. While these errors cannot be measured directly, they are minimized through strict quality controls in the data collection process and a careful review of all reported data for consistency and reasonableness.

To assist in evaluating the reliability of the estimates in this report, the "Root Mean Square Error" is shown for selected items in the following table. The "Root Mean Square Error" is a statistical measure based on past performance and is computed using the differences between first and final estimates. The "Root Mean Square Error" for all layers over the past 24 months is 0.2 percent. This means that chances are 2 out of 3 that the final estimate will not be above or below the current estimate of 335 million layers by more than 0.2 percent. Chances are 9 out of 10 that the difference will not exceed 0.4 percent.

Reliability of Layer and Egg Estimates

[Based on data for the past twenty-four months]

Item	Root mean square error	90 percent confidence level	Difference between first and latest estimate				
			Average	Smallest	Largest	Months	
						Below latest	Above latest
All layers	(percent) 0.2	(percent) 0.4	(1,000) 504	(1,000) 25	(1,000) 1,904	(number) 16	(number) 8
Eggs	0.2	0.4	(million) 10	(million) 1	(million) 38	17	7

Regional Listing

- North Atlantic:** Connecticut, Maine, Massachusetts, New Hampshire, New Jersey, New York, Pennsylvania, Rhode Island, Vermont.
- East North Central:** Illinois, Indiana, Michigan, Ohio, Wisconsin.
- West North Central:** Iowa, Kansas, Minnesota, Missouri, Nebraska, North Dakota, South Dakota.
- South Atlantic:** Delaware, Florida, Georgia, Maryland, North Carolina, South Carolina, Virginia, West Virginia.
- South Central:** Alabama, Arkansas, Kentucky, Louisiana, Mississippi, Oklahoma, Tennessee, Texas.
- West:** Alaska, Arizona, California, Colorado, Hawaii, Idaho, Montana, New Mexico, Nevada, Oregon, Utah, Washington, Wyoming.

Terms and Definitions of Chickens and Eggs Estimates

All Layers includes both table egg and hatching egg flocks regardless of size.

Intended Placements are reported by leading breeders. Coverage may not be 100 percent. Includes expected pullet chicks from eggs sold during the preceding month at the rate of 125 pullet chicks per case of 30 dozen eggs.

Information Contacts

Listed below are the commodity specialists in the Livestock Branch of the National Agricultural Statistics Service to contact for additional information. E-mail inquiries may be sent to nass@nass.usda.gov

- Dan Kerestes, Chief, Livestock Branch (202) 720-3570
- Bruce Boess, Head, Poultry and Specialty Commodities Section (202) 720-4447
- Cody Brokmeyer – Poultry Slaughter, Turkey Hatchery, Turkeys Raised (202) 690-3237
- David Colwell – Cold Storage (202) 720-8784
- LaKeya Jones – Catfish Processing, Catfish Production, Trout Production,
 Census of Aquaculture, Honey, Egg Products, Mink (202) 720-0585
- Kim Linonis – Layers, Eggs (202) 690-8632
- Miste Salmon – Broiler Hatchery, Chicken Hatchery (202) 720-3244

Access to NASS Reports

For your convenience, you may access NASS reports and products the following ways:

- All reports are available electronically, at no cost, on the NASS web site: <http://www.nass.usda.gov>
- Both national and state specific reports are available via a free e-mail subscription. To set-up this free subscription, visit <http://www.nass.usda.gov> and in the “Follow NASS” box under “Receive reports by Email,” click on “National” or “State” to select the reports you would like to receive.

For more information on NASS surveys and reports, call the NASS Agricultural Statistics Hotline at (800) 727-9540, 7:30 a.m. to 4:00 p.m. ET, or e-mail: nass@nass.usda.gov.

The United States Department of Agriculture (USDA) prohibits discrimination in all its programs and activities on the basis of race, color, national origin, age, disability, and where applicable, sex, marital status, familial status, parental status, religion, sexual orientation, political beliefs, genetic information, reprisal, or because all or a part of an individual's income is derived from any public assistance program. (Not all prohibited bases apply to all programs.) Persons with disabilities who require alternative means for communication of program information (Braille, large print, audiotape, etc.) should contact USDA's TARGET Center at (202) 720-2600 (voice and TDD).

To file a complaint of discrimination, write to USDA, Assistant Secretary for Civil Rights, Office of the Assistant Secretary for Civil Rights, 1400 Independence Avenue, S.W., Stop 9410, Washington, DC 20250-9410, or call toll-free at (866) 632-9992 (English) or (800) 877-8339 (TDD) or (866) 377-8642 (English Federal-relay) or (800) 845-6136 (Spanish Federal-relay). USDA is an equal opportunity provider and employer.