



Chickens and Eggs

ISSN: 1948-9064

Released October 22, 2012, by the National Agricultural Statistics Service (NASS), Agricultural Statistics Board, United States Department of Agriculture (USDA).

September Egg Production Up 1 Percent

United States egg production totaled 7.55 billion during September 2012, up 1 percent from last year. Production included 6.57 billion table eggs, and 987 million hatching eggs, of which 919 million were broiler-type and 68 million were egg-type. The total number of layers during September 2012 averaged 337 million, up 1 percent from last year. September egg production per 100 layers was 2,241 eggs, up slightly from September 2011.

All layers in the United States on October 1, 2012 totaled 338 million, up 1 percent from last year. The 338 million layers consisted of 285 million layers producing table or market type eggs, 49.3 million layers producing broiler-type hatching eggs, and 2.96 million layers producing egg-type hatching eggs. Rate of lay per day on October 1, 2012, averaged 74.3 eggs per 100 layers, down 1 percent from October 1, 2011.

Egg-Type Chicks Hatched Down 6 Percent

Egg-type chicks hatched during September 2012 totaled 37.5 million, down 6 percent from September 2011. Eggs in incubators totaled 37.2 million on October 1, 2012, up 1 percent from a year ago.

Domestic placements of egg-type pullet chicks for future hatchery supply flocks by leading breeders totaled 206 thousand during September 2012, down 18 percent from September 2011.

Broiler-Type Chicks Hatched Down Slightly

Broiler-type chicks hatched during September 2012 totaled 718 million, down slightly from September 2011. Eggs in incubators totaled 581 million on October 1, 2012, up 2 percent from a year earlier.

Leading breeders placed 6.68 million broiler-type pullet chicks for future domestic hatchery supply flocks during September 2012, up slightly from September 2011.

This page intentionally left blank.

Contents

Average Number of All Layers on Hand During the Month – United States: 2011-2012.....	4
Egg Production During the Month by Type – United States: 2011-2012.....	4
Average Number of Layers During the Month – United States.....	5
All Egg Production During the Month – United States	5
Layers on Hand and Eggs Produced by Type and Forced Molt – United States: August-September 2011 and 2012.....	6
Layers on Hand and Eggs Produced by Type and Forced Molt – United States: September-October 2011 and 2012.....	7
Layers on Hand and Eggs Produced – States and United States: During August 2011 and 2012	8
Layers on Hand and Eggs Produced – States and United States: During September 2011 and 2012	9
Egg Production by Type – States and United States: August 2011 and 2012.....	10
Egg Production by Type – States and United States: September 2011 and 2012.....	11
Forced Molt as Percent of All Layers by Month – United States: 2011-2012.....	12
Forced Molt as Percent of All Layers – States and United States: October 1, 2011 and 2012.....	12
Hatchery Production – United States: 2011 and 2012	13
Egg-Type Eggs in Incubators – Regions and United States: October 1, 2011 and 2012.....	14
Egg-Type Chicks Hatched by Month – United States: 2011-2012.....	14
Intended Placements of Egg-Type Pullet Chicks for Hatchery Supply Flocks by Month – United States: 2011-2012.....	15
Broiler-Type Eggs in Incubators – Regions and United States: October 1, 2011 and 2012.....	15
Broiler-Type Chicks Hatched – States and United States: September 2011 and 2012.....	16
Broiler-Type Chicks Hatched by Month – United States: 2011-2012.....	16
Intended Placements of Broiler-Type Pullet Chicks for Hatchery Supply Flocks by Month and Total: 2011-2012.....	17
Statistical Methodology	18
Regional Listing.....	19
Terms and Definitions of Chickens and Eggs Estimates	19
Information Contacts	19

Average Number of All Layers on Hand During the Month – United States: 2011-2012

[Blank data cells indicate estimation period has not yet begun]

Month	2011		2012	
	(1,000 layers)		(1,000 layers)	
December ¹		343,083		338,158
January		342,266		337,618
February		339,787		338,151
March		340,655		339,626
April		340,896		339,517
May		337,897		338,447
June		336,411		336,787
July		335,799		335,020
August		335,412		335,615
September		335,328		337,046
October		335,884		
November		337,716		

¹ December preceding year.

Egg Production During the Month by Type – United States: 2011-2012

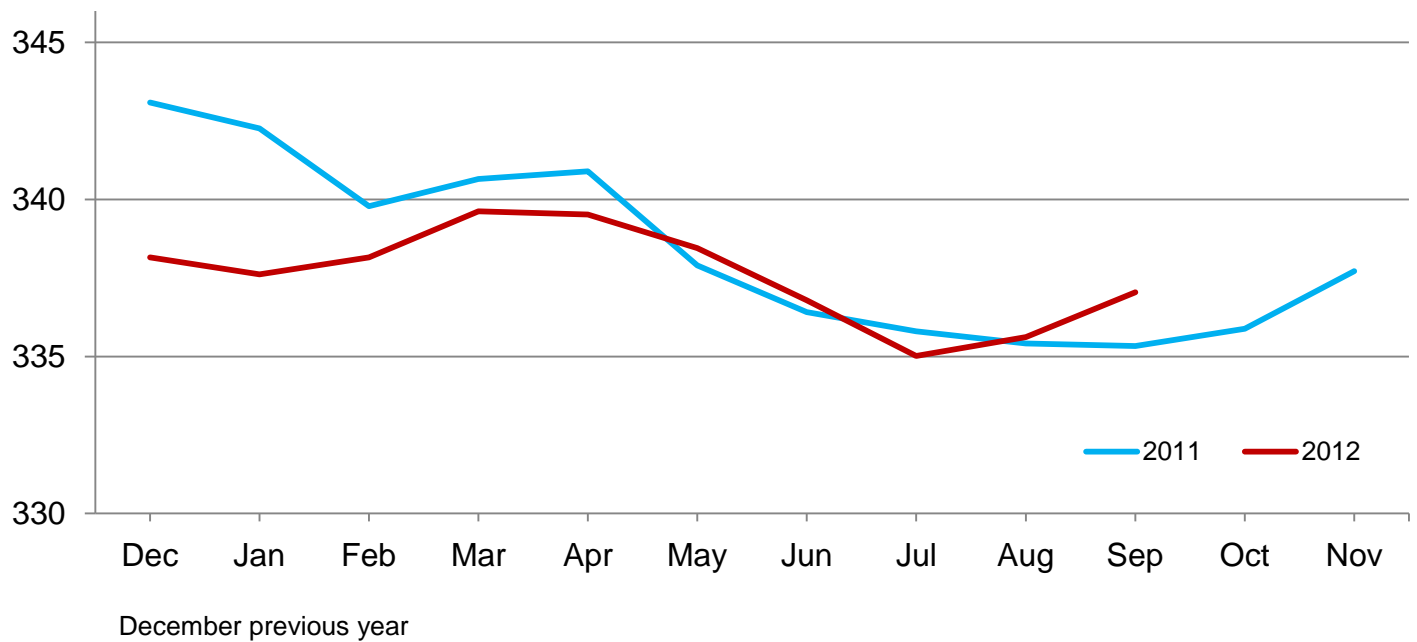
[Totals may not add due to rounding. Blank data cells indicate estimation period has not yet begun]

Month	Total eggs		Table eggs		Hatching eggs	
	2011	2012	2011	2012	2011	2012
	(million eggs)	(million eggs)	(million eggs)	(million eggs)	(million eggs)	(million eggs)
December ¹	7,927	7,932	6,845	6,894	1,083	1,038
January	7,833	7,831	6,736	6,786	1,098	1,046
February	7,013	7,235	6,022	6,247	990	987
March	7,840	7,859	6,735	6,800	1,106	1,059
April	7,617	7,582	6,534	6,545	1,083	1,038
May	7,773	7,770	6,651	6,693	1,123	1,078
June	7,503	7,501	6,421	6,470	1,083	1,032
July	7,732	7,727	6,633	6,677	1,100	1,051
August	7,719	7,802	6,644	6,764	1,076	1,039
September	7,503	7,554	6,476	6,568	1,028	987
October	7,783		6,734		1,050	
November	7,612		6,605		1,007	
During year	91,855		79,036		12,827	

¹ December preceding year.

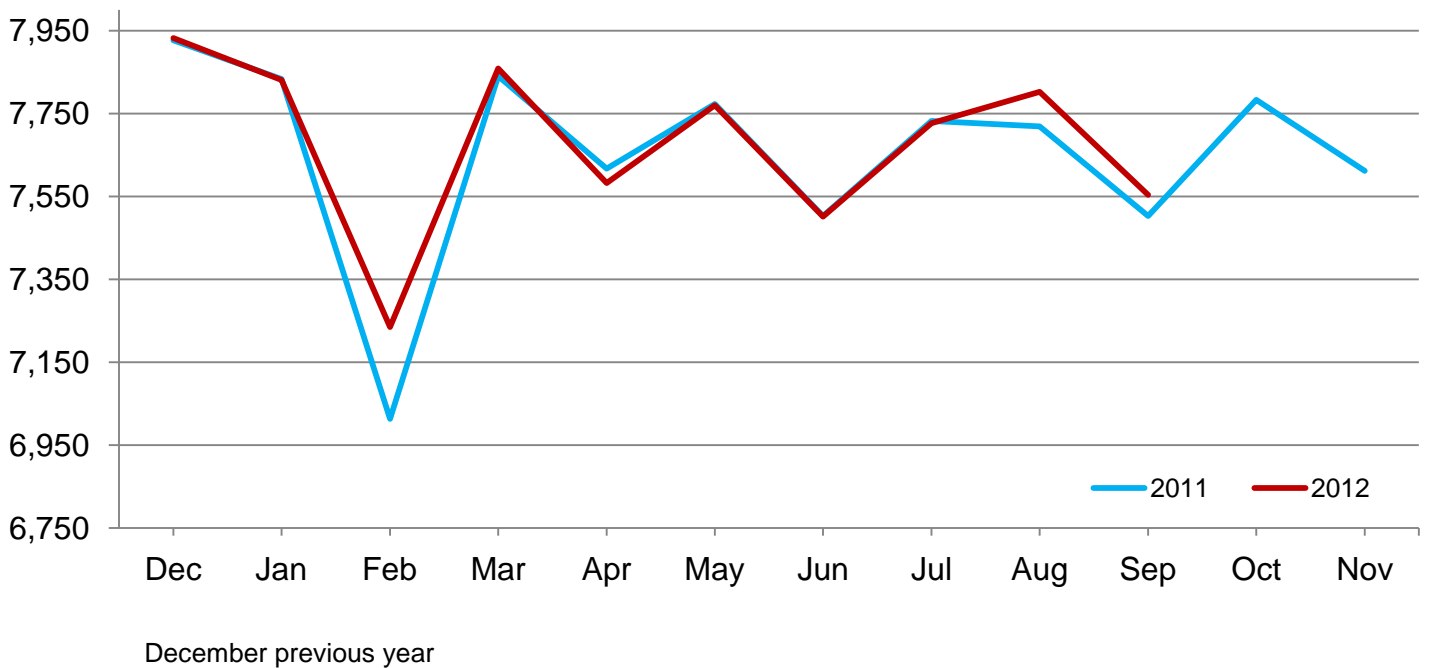
Average Layers During the Month – United States

Million layers



All Egg Production During the Month – United States

Million eggs



**Layers on Hand and Eggs Produced by Type and Forced Molt – United States:
August-September 2011 and 2012**

[Totals may not add due to rounding]

Item	2011	2012	2012 as percent of 2011
Layers during August			
All layers 1,000	335,412	335,615	100
Table egg type 1,000	279,734	282,685	101
Hatching egg type 1,000	55,678	52,930	95
Broiler-type hatching 1,000	52,743	50,112	95
Egg-type hatching 1,000	2,935	2,818	96
Eggs per 100 layers during August			
All layers number	2,301	2,325	101
Table egg type number	2,375	2,393	101
Hatching egg type number	1,933	1,963	102
Broiler-type hatching number	1,909	1,936	101
Egg-type hatching number	2,351	2,449	104
Eggs produced during August			
All layers million	7,719	7,802	101
Table egg type million	6,644	6,764	102
Hatching egg type million	1,076	1,039	97
Broiler-type hatching million	1,007	970	96
Egg-type hatching million	69	69	100
Layers on September 1			
All layers 1,000	335,794	336,514	100
Table egg type 1,000	280,911	284,091	101
Hatching egg type 1,000	54,883	52,423	96
Broiler-type hatching 1,000	51,848	49,583	96
Egg-type hatching 1,000	3,035	2,840	94
Eggs per 100 layers on September 1			
All layers number	74.4	75.1	101
Table egg type number	76.7	77.3	101
Hatching egg type number	62.3	63.1	101
Broiler-type hatching number	61.5	62.3	101
Egg-type hatching number	75.0	78.0	104
Forced molt layers on September 1			
Being molted percent	3.2	2.9	91
Molt completed percent	20.3	19.8	98
Layers sold for slaughter during August 1,000	13,308	14,770	111
Layers rendered, died, destroyed, composted or disappeared for any reason during August 1,000	7,441	7,740	104
Pullets on September 1 1,000	103,770	105,490	102
Pullets added during August ¹ 1,000	21,238	25,291	119

¹ Pullet chicks less than 3 days old added to pullet flocks.

**Layers on Hand and Eggs Produced by Type and Forced Molt – United States:
September-October 2011 and 2012**

[Totals may not add due to rounding]

Item	2011	2012	2012 as percent of 2011
Layers during September			
All layers 1,000	335,328	337,046	101
Table egg type 1,000	280,855	284,699	101
Hatching egg type 1,000	54,473	52,347	96
Broiler-type hatching 1,000	51,468	49,443	96
Egg-type hatching 1,000	3,005	2,904	97
Eggs per 100 layers during September			
All layers number	2,238	2,241	100
Table egg type number	2,306	2,307	100
Hatching egg type number	1,887	1,885	100
Broiler-type hatching number	1,863	1,859	100
Egg-type hatching number	2,296	2,342	102
Eggs produced during September			
All layers million	7,503	7,554	101
Table egg type million	6,476	6,568	101
Hatching egg type million	1,028	987	96
Broiler-type hatching million	959	919	96
Egg-type hatching million	69	68	99
Layers on October 1			
All layers 1,000	334,826	337,549	101
Table egg type 1,000	280,782	285,294	102
Hatching egg type 1,000	54,044	52,255	97
Broiler-type hatching 1,000	51,077	49,292	97
Egg-type hatching 1,000	2,967	2,963	100
Eggs per 100 layers on October 1			
All layers number	74.7	74.3	99
Table egg type number	77.0	76.4	99
Hatching egg type number	62.8	62.6	100
Broiler-type hatching number	61.9	61.8	100
Egg-type hatching number	78.9	76.8	97
Forced molt layers on October 1			
Being molted percent	3.9	3.2	82
Molt completed percent	20.4	19.9	98
Layers sold for slaughter during September 1,000	15,543	13,954	90
Layers rendered, died, destroyed, composted or disappeared for any reason during September 1,000	6,379	6,759	106
Pullets on October 1 1,000	105,114	104,110	99
Pullets added during September ¹ 1,000	23,141	22,109	96

¹ Pullet chicks less than 3 days old added to pullet flocks.

Layers on Hand and Eggs Produced – States and United States: During August 2011 and 2012

State	Table egg layers in flocks 30,000 and above		All layers		Eggs per 100 for all layers	
	2011	2012	2011	2012	2011	2012
	(1,000 layers)	(1,000 layers)	(1,000 layers)	(1,000 layers)	(eggs)	(eggs)
Alabama	1,274	1,525	9,002	9,082	1,955	2,048
Arkansas	3,400	3,670	12,190	12,084	2,084	2,152
California	18,714	19,345	19,013	19,697	2,377	2,356
Colorado	4,055	3,770	4,511	4,221	2,283	2,511
Connecticut	2,191	2,238	2,263	2,305	2,475	2,516
Florida	9,085	8,188	9,473	8,507	2,354	2,363
Georgia	7,383	8,456	16,141	16,767	2,150	2,153
Illinois	4,098	3,848	4,310	4,109	2,390	2,409
Indiana	22,229	23,681	22,931	24,358	2,351	2,307
Iowa	51,932	51,226	52,871	52,177	2,328	2,371
Maine	3,506	3,475	3,561	3,530	2,303	2,295
Maryland	1,760	2,254	1,885	2,363	2,175	2,412
Michigan	9,839	11,814	9,991	11,964	2,452	2,424
Minnesota	9,584	9,741	10,081	10,163	2,331	2,411
Mississippi	1,359	1,461	5,783	5,545	2,092	2,128
Missouri	5,931	5,325	7,354	6,768	2,352	2,408
Nebraska	8,923	8,966	8,973	9,016	2,530	2,507
New York	4,130	4,168	4,365	4,400	2,474	2,523
North Carolina	5,458	5,734	12,491	12,595	2,090	2,048
Ohio	27,204	26,316	27,705	26,842	2,292	2,321
Oregon	2,235	2,146	2,380	2,304	2,437	2,648
Pennsylvania	24,090	22,700	25,250	23,778	2,436	2,481
South Carolina	3,183	2,984	4,420	4,206	2,308	2,330
South Dakota	2,341	2,207	2,381	2,247	2,604	2,537
Texas	14,036	14,934	18,101	18,685	2,282	2,301
Utah	3,527	3,614	3,557	3,644	2,390	2,415
Virginia	1,215	1,123	2,897	2,759	2,106	2,138
Washington	6,688	6,611	6,803	6,726	2,396	2,334
Wisconsin	3,986	4,341	4,559	4,946	2,369	2,406
Other States ¹	11,818	12,221	20,170	19,827	2,181	2,204
United States	275,174	278,082	335,412	335,615	2,301	2,325

¹ Includes data for States not published in this table.

Layers on Hand and Eggs Produced – States and United States: During September 2011 and 2012

State	Table egg layers in flocks 30,000 and above		All layers		Eggs per 100 for all layers	
	2011	2012	2011	2012	2011	2012
	(1,000 layers)	(1,000 layers)	(1,000 layers)	(1,000 layers)	(eggs)	(eggs)
Alabama	1,334	1,511	8,977	9,034	1,894	1,959
Arkansas	3,385	3,803	11,743	12,117	2,010	2,063
California	18,967	19,296	19,262	19,652	2,264	2,280
Colorado	4,170	3,762	4,625	4,197	2,227	2,311
Connecticut	2,162	2,210	2,232	2,274	2,375	2,375
Florida	9,168	8,458	9,553	8,797	2,313	2,319
Georgia	7,414	8,475	16,147	16,727	2,155	2,080
Illinois	4,238	3,799	4,446	4,065	2,362	2,386
Indiana	22,001	23,913	22,720	24,669	2,311	2,238
Iowa	51,988	51,576	52,917	52,550	2,220	2,295
Maine	3,540	3,508	3,595	3,563	2,225	2,217
Maryland	1,737	2,328	1,874	2,439	2,241	2,255
Michigan	10,023	11,794	10,175	11,944	2,319	2,336
Minnesota	9,623	9,614	10,125	10,033	2,262	2,352
Mississippi	1,453	1,494	5,758	5,473	2,049	2,046
Missouri	5,907	5,636	7,292	7,072	2,386	2,277
Nebraska	8,931	8,974	8,981	9,024	2,427	2,460
New York	4,128	4,236	4,367	4,466	2,427	2,373
North Carolina	5,461	5,735	12,237	12,445	2,117	2,009
Ohio	27,486	26,480	27,999	27,001	2,232	2,230
Oregon	2,198	2,140	2,355	2,286	2,335	2,537
Pennsylvania	24,123	22,958	25,280	24,055	2,350	2,340
South Carolina	2,996	2,909	4,196	4,151	2,264	2,192
South Dakota	2,382	2,253	2,422	2,293	2,519	2,529
Texas	14,195	15,248	18,084	18,922	2,212	2,267
Utah	3,514	3,570	3,544	3,600	2,398	2,250
Virginia	1,280	1,164	2,988	2,706	2,108	1,959
Washington	6,779	6,752	6,894	6,867	2,306	2,243
Wisconsin	3,963	4,274	4,543	4,879	2,355	2,275
Other States ¹	11,749	12,226	19,997	19,745	2,125	2,132
United States	276,295	280,096	335,328	337,046	2,238	2,241

¹ Includes data for States not published in this table.

Egg Production by Type – States and United States: August 2011 and 2012

[Totals may not add due to rounding. Data by type of flock not shown for some States to avoid disclosing individual operations, data included in United States totals]

State	Total production		Table eggs		Hatching eggs	
	2011	2012	2011	2012	2011	2012
	(million eggs)	(million eggs)	(million eggs)	(million eggs)	(million eggs)	(million eggs)
Alabama	176	186	29	38	147	148
Arkansas	254	260	85	93	169	167
California	452	464	(D)	(D)	(D)	(D)
Colorado	103	106	(D)	(D)	(D)	(D)
Connecticut	56	58	(D)	(D)	(D)	(D)
Florida	223	201	217	196	6	5
Georgia	347	361	178	199	169	162
Illinois	103	99	100	95	3	4
Indiana	539	562	527	550	12	12
Iowa	1,231	1,237	1,217	1,221	14	16
Maine	82	81	(D)	(D)	(D)	(D)
Maryland	41	57	40	56	1	1
Michigan	245	290	(D)	(D)	(D)	(D)
Minnesota	235	245	226	238	9	7
Mississippi	121	118	35	37	86	81
Missouri	173	163	(D)	(D)	(D)	(D)
Nebraska	227	226	227	226	-	-
New York	108	111	(D)	(D)	(D)	(D)
North Carolina	261	258	130	135	131	123
Ohio	635	623	(D)	(D)	(D)	(D)
Oregon	58	61	56	58	2	3
Pennsylvania	615	590	595	572	20	18
South Carolina	102	98	80	76	22	22
South Dakota	62	57	62	57	-	-
Texas	413	430	(D)	(D)	(D)	(D)
Utah	85	88	85	88	-	-
Virginia	61	59	29	28	32	31
Washington	163	157	(D)	(D)	(D)	(D)
Wisconsin	108	119	(D)	(D)	(D)	(D)
Other States ¹	440	437	306	317	135	121
United States	7,719	7,802	6,644	6,764	1,076	1,039

- Represents zero.

(D) Withheld to avoid disclosing data for individual operations.

¹ Includes data for States not published in this table.

Egg Production by Type – States and United States: September 2011 and 2012

[Totals may not add due to rounding. Data by type of flock not shown for some States to avoid disclosing individual operations, data included in United States totals]

State	Total production		Table eggs		Hatching eggs	
	2011	2012	2011	2012	2011	2012
	(million eggs)	(million eggs)	(million eggs)	(million eggs)	(million eggs)	(million eggs)
Alabama	170	177	31	36	139	141
Arkansas	236	250	80	91	156	159
California	436	448	(D)	(D)	(D)	(D)
Colorado	103	97	(D)	(D)	(D)	(D)
Connecticut	53	54	(D)	(D)	(D)	(D)
Florida	221	204	215	199	6	5
Georgia	348	348	182	191	166	157
Illinois	105	97	102	93	3	4
Indiana	525	552	512	539	13	13
Iowa	1,175	1,206	1,160	1,190	15	16
Maine	80	79	(D)	(D)	(D)	(D)
Maryland	42	55	40	54	2	1
Michigan	236	279	(D)	(D)	(D)	(D)
Minnesota	229	236	221	229	8	7
Mississippi	118	112	36	37	82	75
Missouri	174	161	(D)	(D)	(D)	(D)
Nebraska	218	222	218	222	-	-
New York	106	106	(D)	(D)	(D)	(D)
North Carolina	259	250	137	135	122	115
Ohio	625	602	(D)	(D)	(D)	(D)
Oregon	55	58	53	56	2	2
Pennsylvania	594	563	576	545	18	18
South Carolina	95	91	75	70	20	21
South Dakota	61	58	61	58	-	-
Texas	400	429	(D)	(D)	(D)	(D)
Utah	85	81	85	81	-	-
Virginia	63	53	31	26	32	27
Washington	159	154	(D)	(D)	(D)	(D)
Wisconsin	107	111	(D)	(D)	(D)	(D)
Other States ¹	425	421	296	307	130	115
United States	7,503	7,554	6,476	6,568	1,028	987

- Represents zero.

(D) Withheld to avoid disclosing data for individual operations.

¹ Includes data for States not published in this table.

Forced Molt as Percent of All Layers by Month – United States: 2011-2012

[As of the first of the month. Blank data cells indicate estimation period has not yet begun]

Month	Being molted		Molt completed	
	2011 (percent)	2012 (percent)	2011 (percent)	2012 (percent)
January	2.8	2.8	21.2	19.9
February	3.6	4.8	20.2	18.8
March	3.0	3.8	20.1	19.9
April	2.6	2.8	20.0	19.7
May	3.0	4.3	20.0	19.6
June	3.8	2.9	19.5	20.3
July	3.5	2.9	19.6	20.4
August	3.6	2.4	19.5	20.6
September	3.2	2.9	20.3	19.8
October	3.9	3.2	20.4	19.9
November	2.5		21.2	
December	1.7		21.1	

Forced Molt as Percent of All Layers – States and United States: October 1, 2011 and 2012

[As of the first of the month]

State	Being molted		Molt completed	
	2011 (percent)	2012 (percent)	2011 (percent)	2012 (percent)
Alabama	0.5	1.0	8.0	6.5
Arkansas	1.5	2.0	4.5	12.0
California	6.5	6.0	27.5	30.0
Colorado	2.0	9.0	19.5	37.0
Connecticut	-	-	9.0	9.5
Florida	5.5	2.5	36.0	39.5
Georgia	1.5	3.5	15.5	13.0
Illinois	6.0	-	25.0	17.5
Indiana	5.0	4.5	30.0	29.5
Iowa	6.5	3.0	34.0	28.5
Maine	-	-	-	-
Maryland	5.0	-	7.0	-
Michigan	4.0	3.5	12.5	7.5
Minnesota	4.5	3.0	26.0	25.0
Mississippi	2.0	1.5	10.0	10.5
Missouri	3.5	3.0	18.5	17.5
Nebraska	1.0	1.0	0.5	2.0
New York	1.5	2.0	5.0	11.5
North Carolina	3.0	1.0	15.0	15.0
Ohio	3.0	5.0	12.0	12.5
Oregon	8.5	2.0	35.0	35.0
Pennsylvania	4.0	0.5	11.0	10.0
South Carolina	-	3.0	18.5	15.5
South Dakota	0.5	4.0	14.0	25.5
Texas	2.0	4.5	23.5	24.0
Utah	4.0	10.0	39.0	36.0
Virginia	3.0	6.5	11.5	11.5
Washington	6.0	7.0	34.5	29.0
Wisconsin	5.5	-	31.5	26.0
Other States ¹	3.4	2.8	14.5	18.1
United States	3.9	3.2	20.4	19.9

- Represents zero.

¹ Includes data for States not published in this table.

Hatchery Production – United States: 2011 and 2012

Item	2011	2012	2012 as percent of 2011
	(1,000)	(1,000)	(percent)
Egg-type			
Eggs in incubators on October 1	36,861	37,220	101
Chicks hatched during September	39,805	37,542	94
Chicks hatched January through September	364,622	355,531	98
Pullets hatched during September for intended placements:			
Hatchery supply flocks	252	206	82
Cumulative potential placements 7-18 months earlier ¹	2,922	3,104	106
Broiler-type			
Eggs in incubators on October 1	569,860	581,378	102
Chicks hatched during September	719,606	718,067	100
Chicks hatched January through September	6,879,539	6,741,965	98
Pullets hatched during September for intended placements:			
Hatchery supply flocks	6,657	6,678	100
Cumulative potential placements 7-15 months earlier ²	63,321	60,860	96

¹ 2012 includes pullet chicks hatched March 2011 through February 2012.

² 2012 includes pullet chicks hatched June 2011 through February 2012.

Egg-Type Eggs in Incubators – Regions and United States: October 1, 2011 and 2012

[See regional listing on page 19]

Region	2011	2012	2012 as percent of 2011
	(1,000 eggs)	(1,000 eggs)	(percent)
North Atlantic	4,804	4,166	87
East North Central	6,553	6,510	99
West North Central	8,191	9,858	120
South Atlantic	4,182	3,965	95
South Central	5,135	6,114	119
West	7,996	6,607	83
United States	36,861	37,220	101

Egg-Type Chicks Hatched by Month – United States: 2011-2012

[Blank data cells indicate estimation period has not yet begun]

Month	By months			Cumulative		
	2011	2012	2012 as percent of 2011	2011	2012	2012 as percent of 2011
	(1,000 chicks)	(1,000 chicks)	(percent)	(1,000 chicks)	(1,000 chicks)	(percent)
January	40,590	40,277	99	40,590	40,277	99
February	37,415	39,300	105	78,005	79,577	102
March	43,603	40,622	93	121,608	120,199	99
April	42,959	39,702	92	164,567	159,901	97
May	42,949	43,280	101	207,516	203,181	98
June	38,920	39,410	101	246,436	242,591	98
July	36,950	34,041	92	283,386	276,632	98
August	41,431	41,357	100	324,817	317,989	98
September	39,805	37,542	94	364,622	355,531	98
October	37,624			402,246		
November	37,512			439,758		
December	39,071			478,829		

Intended Placements of Egg-Type Pullet Chicks for Hatchery Supply Flocks by Month – United States: 2011-2012

[Blank data cells indicate estimation period has not yet begun]

Month	Pullet chicks hatched		2012 as percent of 2011	Cumulative potential placements relative to current supply flocks 7-18 months earlier ¹	
	2011	2012		2012	2013
	(1,000 chicks)	(1,000 chicks)	(percent)	(1,000 chicks)	(1,000 chicks)
January	220	263	120	2,920	2,834
February	244	238	98	2,936	2,871
March	253	210	83	3,001	2,890
April	287	137	48	3,002	2,844
May	196	302	154	3,098	
June	302	119	39	3,053	
July	234	271	116	3,067	
August	318	337	106	3,110	
September	252	206	82	3,104	
October	266			3,061	
November	218			2,911	
December	277			3,017	
Total	3,067				

¹ For September 2012, includes breeder pullet chicks hatched March 2011 through February 2012. The 7-18 months represent the first laying cycle. Molting and additional laying cycles will increase the cumulative potential placements.

Broiler-Type Eggs in Incubators – Regions and United States: October 1, 2011 and 2012

[See regional listing on page 19]

Region	2011	2012	2012 as percent of 2011
	(1,000 eggs)	(1,000 eggs)	(percent)
North Atlantic	10,724	11,267	105
East North Central	11,414	12,105	106
West North Central	26,941	26,904	100
South Atlantic	217,909	223,473	103
South Central	281,406	288,104	102
West	21,466	19,525	91
United States	569,860	581,378	102

Broiler-Type Chicks Hatched – States and United States: September 2011 and 2012

State	During September			January-September		
	2011	2012	2012 as percent of 2011	2011	2012	2012 as percent of 2011
	(1,000 chicks)	(1,000 chicks)	(percent)	(1,000 chicks)	(1,000 chicks)	(percent)
Alabama	97,764	99,037	101	957,173	925,395	97
Arkansas	74,188	74,860	101	744,848	689,847	93
Delaware	10,585	11,758	111	115,758	112,535	97
Florida	4,784	4,827	101	43,305	43,125	100
Georgia	113,601	114,101	100	1,071,917	1,057,347	99
Kentucky	28,070	26,850	96	252,132	248,845	99
Louisiana	11,697	11,878	102	110,132	113,275	103
Maryland	26,500	25,599	97	248,623	240,892	97
Mississippi	63,421	60,335	95	612,749	592,716	97
Missouri	28,335	29,468	104	256,920	261,008	102
North Carolina	68,629	69,713	102	648,174	658,392	102
Oklahoma	23,759	23,884	101	222,998	220,726	99
Pennsylvania	13,300	13,108	99	125,484	121,968	97
South Carolina	18,335	17,749	97	172,017	169,111	98
Texas	50,096	48,954	98	492,585	483,864	98
Virginia	21,558	21,629	100	201,940	203,336	101
California, Tennessee, and West Virginia	39,999	37,519	94	370,863	357,287	96
19 States ¹	694,621	691,269	100	6,647,618	6,499,669	98
Other States ²	24,985	26,798	107	231,921	242,296	104
United States	719,606	718,067	100	6,879,539	6,741,965	98

¹ States in the weekly hatchery production estimating program.

² Not published separately to avoid disclosing data for individual operations.

Broiler-Type Chicks Hatched by Month – United States: 2011-2012

[Blank data cells indicate estimation period has not yet begun]

Month	By months			Cumulative		
	2011	2012	2012 as percent of 2011	2011	2012	2012 as percent of 2011
	(1,000 chicks)	(1,000 chicks)	(percent)	(1,000 chicks)	(1,000 chicks)	(percent)
January	781,313	751,870	96	781,313	751,870	96
February	708,722	705,113	99	1,490,035	1,456,983	98
March	793,765	764,225	96	2,283,800	2,221,208	97
April	777,866	747,697	96	3,061,666	2,968,905	97
May	804,484	777,636	97	3,866,150	3,746,541	97
June	766,371	756,316	99	4,632,521	4,502,857	97
July	768,432	762,749	99	5,400,953	5,265,606	97
August	758,980	758,292	100	6,159,933	6,023,898	98
September	719,606	718,067	100	6,879,539	6,741,965	98
October	715,886			7,595,425		
November	702,169			8,297,594		
December	758,382			9,055,976		

Intended Placements of Broiler-Type Pullet Chicks for Hatchery Supply Flocks by Month and Total: 2011-2012

[Blank data cells indicate estimation period has not yet begun]

Month	Pullet chicks hatched		2012 as percent of 2011	Cumulative potential placements relative to current supply flocks 7-15 months earlier ¹	
	2011 (1,000 chicks)	2012 (1,000 chicks)		2012 (1,000 chicks)	2013 (1,000 chicks)
United States placements					
January	6,557	6,673	102	64,111	60,864
February	7,284	7,025	96	63,679	60,646
March	7,058	6,753	96	63,323	61,094
April	7,044	6,524	93	63,209	61,334
May	7,721	7,472	97	62,941	
June	7,211	6,800	94	62,547	
July	6,444	6,071	94	61,927	
August	7,233	7,338	101	61,556	
September	6,657	6,678	100	60,860	
October	6,289			60,402	
November	6,890			60,482	
December	6,438			60,721	
Annual total	82,826				
Total placements ²					
January	8,187	8,201	100		
February	8,931	8,818	99		
March	9,023	8,525	94		
April	8,944	8,232	92		
May	9,612	9,430	98		
June	9,225	8,554	93		
July	8,131	7,447	92		
August	8,700	9,241	106		
September	8,546	8,296	97		
October	7,938				
November	8,489				
December	8,279				
Annual total	104,005				

¹ For September 2012, includes breeder pullet chicks hatched June 2011 through February 2012.

² United States production of intended placements worldwide.

Statistical Methodology

Survey Procedures: Primary data for the *Chickens and Eggs* report are from weekly and/or monthly questionnaires sent to producers. An attempt is made to collect information for layer and egg estimates from each known contractor and independent producer who has at least 30,000 table egg layers, flocks of hatchery supply layers, or pullet only operations with at least 500 pullets. Coverage for operations with less than 30,000 table egg layers are estimated each month based on data reported in December. Approximately 650 contractors, independent egg producers, and pullet only operations are contacted each month. All known hatcheries, approximately 300, are contacted for information on a weekly and/or monthly basis.

Estimating Procedures: Sound statistical methodology is employed to derive estimates from the reported data. All data are analyzed for unusual values. Data from each operation are compared to their own past operating profile and to trends from similar operations. Data for missing operations are estimated based on similar operations or historical data. NASS field offices prepare these estimates by using a combination of survey indications and historic trends. Individual State estimates are reviewed by the Agricultural Statistics Board for reasonableness. Individual hatchery data are summed to State, regional, and United States totals.

For chicken hatcheries, chicks hatched consist of all chicks of domesticated breeds including males and chicks destined for hatchery supply flocks and research purposes. Eggs set are eggs in incubators for the purpose of hatching. The relationship of egg-type chicks hatched to chicken inventory and poultry marketings are carefully monitored. The disposition of egg-type chicks hatched prior to placement into the laying flock can vary significantly, which can make comparisons to changes in layer inventory inconsistent over time. Broiler chicks placed are specifically placed on feed for meat production. Intended placement data reported by leading breeders include pullet chicks expected from eggs sold the preceding month. The breeders in this report account for a large percentage of replacement pullets for hatchery supply flocks. Production of replacement pullets by these breeders indicates the number of pullets available to hatchery supply layer flocks several months before the pullets will actually move into the laying flocks. "Hatchery Supply Flocks" include all generations of layers which could lay eggs to supply a hatchery. This includes the generations of parents, grandparents, great-grandparents, pedigree, etc. Also included are research flocks, vaccine flocks, and specific pathogen-free flocks. The broiler cumulative potential placements are a moving total of the intended placements 7-15 months earlier. The egg-type cumulative potential placements of 7-18 months earlier represent the first laying cycle. Molting and additional laying cycles will increase the cumulative potential placements of egg-type hatching flocks.

Revision Policy: The previous month's estimates are subject to revision if late reports or corrected data indicates a different level. Additionally, revisions after the monthly report will be made at the end of the marketing year and published in the annual reports of *Chickens and Eggs Summary* and *Hatchery Production Summary*. Estimates will also be reviewed for chickens and eggs after data from the 5-year Census of Agriculture are available. No revisions will be made after that date.

Reliability: Estimates are based on a census of all known contractors and independent producers who have at least 30,000 table egg layers, flocks of hatchery supply layers, pullet only operations with at least 500 pullets, or operating hatcheries and therefore, have no sampling error. However, estimates are subject to errors such as omission, duplication, and mistakes in reporting, recording, and processing the data. While these errors cannot be measured directly, they are minimized through strict quality controls in the data collection process and a careful review of all reported data for consistency and reasonableness.

To assist in evaluating the reliability of the estimates in this report, the "Root Mean Square Error" is shown for selected items in the following table. The "Root Mean Square Error" is a statistical measure based on past performance and is computed using the differences between first and final estimates. The "Root Mean Square Error" for all layers over the past 24 months is 0.2 percent. This means that chances are 2 out of 3 that the final estimate will not be above or below the current estimate of 337 million layers by more than 0.2 percent. Chances are 9 out of 10 that the difference will not exceed 0.4 percent.

Reliability of Layer and Egg Estimates

[Based on data for the past twenty-four months]

Item	Root mean square error	90 percent confidence level	Difference between first and latest estimate				
			Average	Smallest	Largest	Months	
						Below latest	Above latest
All layers	(percent) 0.2	(percent) 0.4	(1,000) 452	(1,000) 25	(1,000) 1,904	(number) 16	(number) 8
Eggs	0.2	0.3	(million) 9	(million) 1	(million) 38	17	7

Regional Listing

- North Atlantic:** Connecticut, Maine, Massachusetts, New Hampshire, New Jersey, New York, Pennsylvania, Rhode Island, Vermont.
- East North Central:** Illinois, Indiana, Michigan, Ohio, Wisconsin.
- West North Central:** Iowa, Kansas, Minnesota, Missouri, Nebraska, North Dakota, South Dakota.
- South Atlantic:** Delaware, Florida, Georgia, Maryland, North Carolina, South Carolina, Virginia, West Virginia.
- South Central:** Alabama, Arkansas, Kentucky, Louisiana, Mississippi, Oklahoma, Tennessee, Texas.
- West:** Alaska, Arizona, California, Colorado, Hawaii, Idaho, Montana, New Mexico, Nevada, Oregon, Utah, Washington, Wyoming.

Terms and Definitions of Chickens and Eggs Estimates

All Layers includes both table egg and hatching egg flocks regardless of size.

Intended Placements are reported by leading breeders. Coverage may not be 100 percent. Includes expected pullet chicks from eggs sold during the preceding month at the rate of 125 pullet chicks per case of 30 dozen eggs.

Information Contacts

Listed below are the commodity specialists in the Livestock Branch of the National Agricultural Statistics Service to contact for additional information. E-mail inquiries may be sent to nass@nass.usda.gov

- Dan Kerestes, Chief, Livestock Branch (202) 720-3570
- Bruce Boess, Head, Poultry and Specialty Commodities Section (202) 720-4447
- Cody Brokmeyer – Poultry Slaughter, Turkey Hatchery, Turkeys Raised (202) 690-3237
- David Colwell – Cold Storage (202) 720-8784
- LaKeya Jones – Catfish Processing, Catfish Production, Trout Production,
 Census of Aquaculture, Honey, Egg Products, Mink (202) 720-0585
- Kim Linonis – Layers, Eggs (202) 690-8632
- Miste Salmon – Broiler Hatchery, Chicken Hatchery (202) 720-3244

Access to NASS Reports

For your convenience, you may access NASS reports and products the following ways:

- All reports are available electronically, at no cost, on the NASS web site: <http://www.nass.usda.gov>
- Both national and state specific reports are available via a free e-mail subscription. To set-up this free subscription, visit <http://www.nass.usda.gov> and in the “Follow NASS” box under “Receive reports by Email,” click on “National” or “State” to select the reports you would like to receive.

For more information on NASS surveys and reports, call the NASS Agricultural Statistics Hotline at (800) 727-9540, 7:30 a.m. to 4:00 p.m. ET, or e-mail: nass@nass.usda.gov.

The United States Department of Agriculture (USDA) prohibits discrimination in all its programs and activities on the basis of race, color, national origin, age, disability, and where applicable, sex, marital status, familial status, parental status, religion, sexual orientation, political beliefs, genetic information, reprisal, or because all or a part of an individual's income is derived from any public assistance program. (Not all prohibited bases apply to all programs.) Persons with disabilities who require alternative means for communication of program information (Braille, large print, audiotape, etc.) should contact USDA's TARGET Center at (202) 720-2600 (voice and TDD).

To file a complaint of discrimination, write to USDA, Assistant Secretary for Civil Rights, Office of the Assistant Secretary for Civil Rights, 1400 Independence Avenue, S.W., Stop 9410, Washington, DC 20250-9410, or call toll-free at (866) 632-9992 (English) or (800) 877-8339 (TDD) or (866) 377-8642 (English Federal-relay) or (800) 845-6136 (Spanish Federal-relay). USDA is an equal opportunity provider and employer.