



Chickens and Eggs

ISSN: 1948-9064

Released November 23, 2012, by the National Agricultural Statistics Service (NASS), Agricultural Statistics Board, United States Department of Agriculture (USDA).

October Egg Production Up 2 Percent

United States egg production totaled 7.90 billion during October 2012, up 2 percent from last year. Production included 6.88 billion table eggs, and 1.02 billion hatching eggs, of which 952 million were broiler-type and 69 million were egg-type. The total number of layers during October 2012 averaged 340 million, up 1 percent from last year. October egg production per 100 layers was 2,321 eggs, up slightly from October 2011.

All layers in the United States on November 1, 2012 totaled 342 million, up 2 percent from last year. The 342 million layers consisted of 291 million layers producing table or market type eggs, 49.1 million layers producing broiler-type hatching eggs, and 2.82 million layers producing egg-type hatching eggs. Rate of lay per day on November 1, 2012, averaged 75.4 eggs per 100 layers, up 1 percent from November 1, 2011.

Egg-Type Chicks Hatched Up 4 Percent

Egg-type chicks hatched during October 2012 totaled 39.1 million, up 4 percent from October 2011. Eggs in incubators totaled 35.0 million on November 1, 2012, down 7 percent from a year ago.

Domestic placements of egg-type pullet chicks for future hatchery supply flocks by leading breeders totaled 196 thousand during October 2012, down 26 percent from October 2011.

Broiler-Type Chicks Hatched Up 2 Percent

Broiler-type chicks hatched during October 2012 totaled 727 million, up 2 percent from October 2011. Eggs in incubators totaled 569 million on November 1, 2012, down 1 percent from a year earlier.

Leading breeders placed 6.22 million broiler-type pullet chicks for future domestic hatchery supply flocks during October 2012, down 1 percent from October 2011.

This page intentionally left blank.

Contents

Average Number of All Layers on Hand During the Month – United States: 2011-2012.....	4
Egg Production During the Month by Type – United States: 2011-2012.....	4
Average Number of Layers During the Month – United States.....	5
All Egg Production During the Month – United States	5
Layers on Hand and Eggs Produced by Type and Forced Molt – United States: September-October 2011 and 2012.....	6
Layers on Hand and Eggs Produced by Type and Forced Molt – United States: October-November 2011 and 2012.....	7
Layers on Hand and Eggs Produced – States and United States: During September 2011 and 2012	8
Layers on Hand and Eggs Produced – States and United States: During October 2011 and 2012.....	9
Egg Production by Type – States and United States: September 2011 and 2012.....	10
Egg Production by Type – States and United States: October 2011 and 2012	11
Forced Molt as Percent of All Layers by Month – United States: 2011-2012.....	12
Forced Molt as Percent of All Layers – States and United States: November 1, 2011 and 2012.....	12
Hatchery Production – United States: 2011 and 2012	13
Egg-Type Eggs in Incubators – Regions and United States: November 1, 2011 and 2012.....	14
Egg-Type Chicks Hatched by Month – United States: 2011-2012.....	14
Intended Placements of Egg-Type Pullet Chicks for Hatchery Supply Flocks by Month – United States: 2011-2012.....	15
Broiler-Type Eggs in Incubators – Regions and United States: November 1, 2011 and 2012.....	15
Broiler-Type Chicks Hatched – States and United States: October 2011 and 2012	16
Broiler-Type Chicks Hatched by Month – United States: 2011-2012.....	16
Intended Placements of Broiler-Type Pullet Chicks for Hatchery Supply Flocks by Month and Total: 2011-2012.....	17
Statistical Methodology	18
Regional Listing.....	19
Terms and Definitions of Chickens and Eggs Estimates	19
Information Contacts	19

Average Number of All Layers on Hand During the Month – United States: 2011-2012

[Blank data cells indicate estimation period has not yet begun]

Month	2011		2012	
	(1,000 layers)		(1,000 layers)	
December ¹		343,083		338,158
January		342,266		337,618
February		339,787		338,151
March		340,655		339,626
April		340,896		339,517
May		337,897		338,447
June		336,411		336,787
July		335,799		335,020
August		335,412		335,615
September		335,328		337,520
October		335,884		340,473
November		337,716		

¹ December preceding year.

Egg Production During the Month by Type – United States: 2011-2012

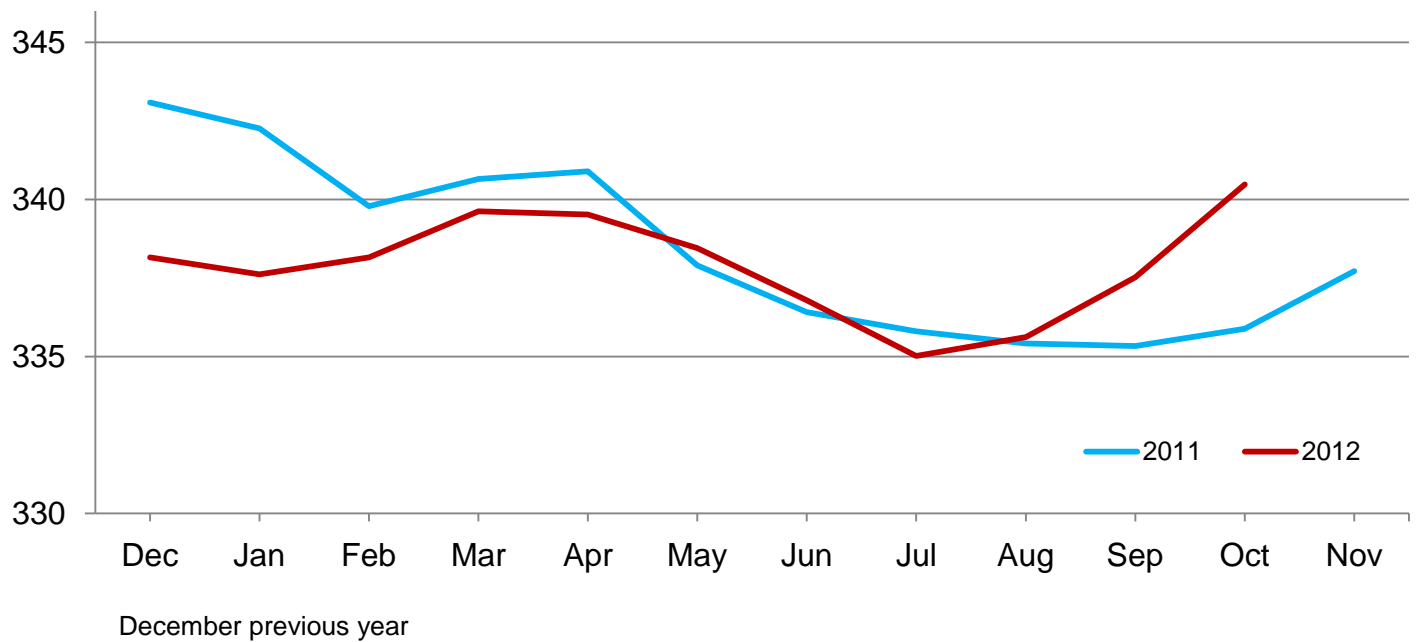
[Totals may not add due to rounding. Blank data cells indicate estimation period has not yet begun]

Month	Total eggs		Table eggs		Hatching eggs	
	2011	2012	2011	2012	2011	2012
	(million eggs)	(million eggs)	(million eggs)	(million eggs)	(million eggs)	(million eggs)
December ¹	7,927	7,932	6,845	6,894	1,083	1,038
January	7,833	7,831	6,736	6,786	1,098	1,046
February	7,013	7,235	6,022	6,247	990	987
March	7,840	7,859	6,735	6,800	1,106	1,059
April	7,617	7,582	6,534	6,545	1,083	1,038
May	7,773	7,770	6,651	6,693	1,123	1,078
June	7,503	7,501	6,421	6,470	1,083	1,032
July	7,732	7,727	6,633	6,677	1,100	1,051
August	7,719	7,802	6,644	6,764	1,076	1,039
September	7,503	7,563	6,476	6,577	1,028	987
October	7,783	7,903	6,734	6,883	1,050	1,021
November	7,612		6,605		1,007	
During year	91,855		79,036		12,827	

¹ December preceding year.

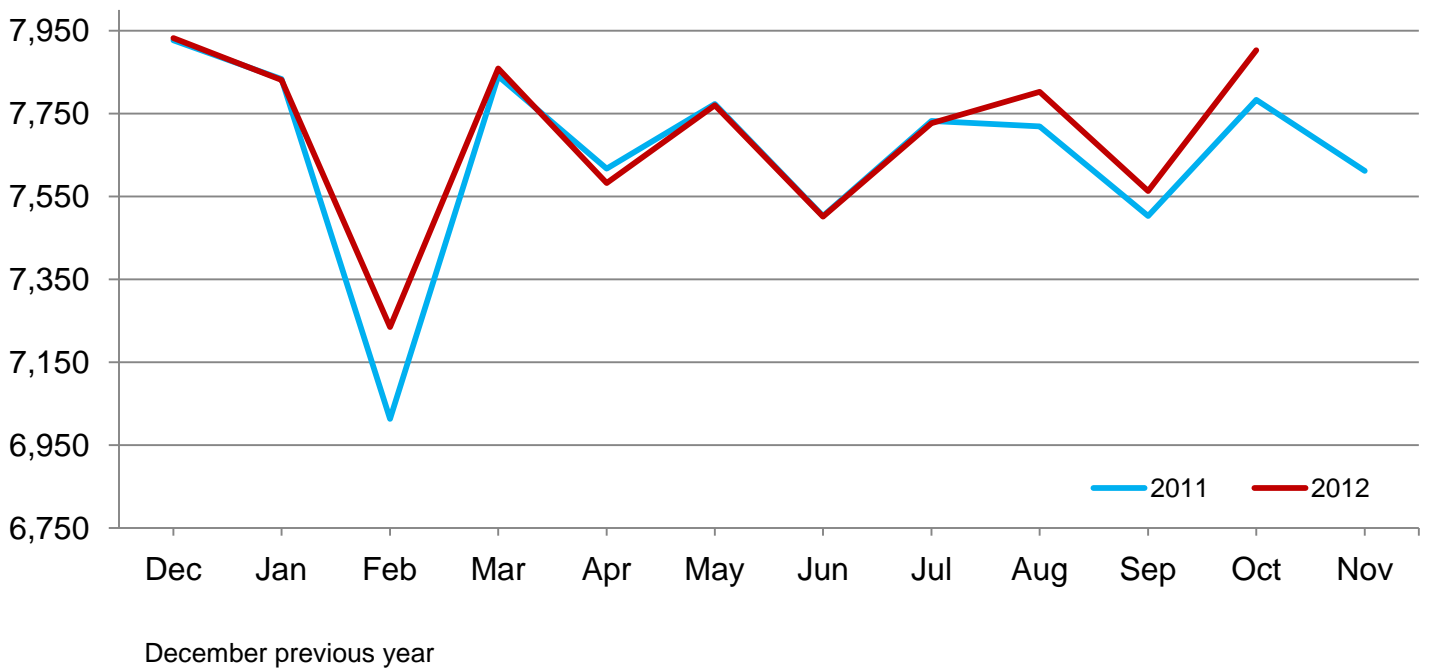
Average Layers During the Month – United States

Million layers



All Egg Production During the Month – United States

Million eggs



**Layers on Hand and Eggs Produced by Type and Forced Molt – United States:
September-October 2011 and 2012**

[[Totals may not add due to rounding]]

Item	2011	2012	2012 as percent of 2011
Layers during September			
All layers1,000	335,328	337,520	101
Table egg type1,000	280,855	285,196	102
Hatching egg type1,000	54,473	52,324	96
Broiler-type hatching1,000	51,468	49,443	96
Egg-type hatching1,000	3,005	2,881	96
Eggs per 100 layers during September			
All layers number	2,238	2,241	100
Table egg type number	2,306	2,306	100
Hatching egg type number	1,887	1,886	100
Broiler-type hatching number	1,863	1,861	100
Egg-type hatching number	2,296	2,326	101
Eggs produced during September			
All layers million	7,503	7,563	101
Table egg type million	6,476	6,577	102
Hatching egg type million	1,028	987	96
Broiler-type hatching million	959	920	96
Egg-type hatching million	69	67	97
Layers on October 1			
All layers1,000	334,826	338,498	101
Table egg type1,000	280,782	286,290	102
Hatching egg type1,000	54,044	52,208	97
Broiler-type hatching1,000	51,077	49,292	97
Egg-type hatching1,000	2,967	2,916	98
Eggs per 100 layers on October 1			
All layers number	74.7	74.2	99
Table egg type number	77.0	76.3	99
Hatching egg type number	62.8	62.6	100
Broiler-type hatching number	61.9	61.8	100
Egg-type hatching number	78.9	76.7	97
Forced molt layers on October 1			
Being moltedpercent	3.9	3.5	90
Molt completedpercent	20.4	20.6	101
Layers sold for slaughter during September1,000	15,543	14,220	91
Layers rendered, died, destroyed, composted or disappeared for any reason during September1,000	6,379	6,772	106
Pullets on October 11,000	105,114	103,907	99
Pullets added during September ¹1,000	23,141	22,542	97

¹ Pullet chicks less than 3 days old added to pullet flocks.

**Layers on Hand and Eggs Produced by Type and Forced Molt – United States:
October-November 2011 and 2012**

[Totals may not add due to rounding]

Item	2011	2012	2012 as percent of 2011
Layers during October			
All layers 1,000	335,884	340,473	101
Table egg type 1,000	282,085	288,421	102
Hatching egg type 1,000	53,799	52,052	97
Broiler-type hatching 1,000	50,840	49,182	97
Egg-type hatching 1,000	2,959	2,870	97
Eggs per 100 layers during October			
All layers number	2,317	2,321	100
Table egg type number	2,387	2,386	100
Hatching egg type number	1,952	1,962	101
Broiler-type hatching number	1,926	1,936	101
Egg-type hatching number	2,399	2,404	100
Eggs produced during October			
All layers million	7,783	7,903	102
Table egg type million	6,734	6,883	102
Hatching egg type million	1,050	1,021	97
Broiler-type hatching million	979	952	97
Egg-type hatching million	71	69	97
Layers on November 1			
All layers 1,000	336,909	342,410	102
Table egg type 1,000	283,370	290,531	103
Hatching egg type 1,000	53,539	51,879	97
Broiler-type hatching 1,000	50,594	49,063	97
Egg-type hatching 1,000	2,945	2,816	96
Eggs per 100 layers on November 1			
All layers number	74.8	75.4	101
Table egg type number	77.1	77.4	100
Hatching egg type number	62.6	63.8	102
Broiler-type hatching number	61.8	63.0	102
Egg-type hatching number	76.8	77.8	101
Forced molt layers on November 1			
Being molted percent	2.5	2.2	88
Molt completed percent	21.2	20.9	99
Layers sold for slaughter during October 1,000	14,300	12,815	90
Layers rendered, died, destroyed, composted or disappeared for any reason during October 1,000	5,885	6,256	106
Pullets on November 1 1,000	103,100	101,943	99
Pullets added during October ¹ 1,000	21,318	22,686	106

¹ Pullet chicks less than 3 days old added to pullet flocks.

Layers on Hand and Eggs Produced – States and United States: During September 2011 and 2012

State	Table egg layers in flocks 30,000 and above		All layers		Eggs per 100 for all layers	
	2011	2012	2011	2012	2011	2012
	(1,000 layers)	(1,000 layers)	(1,000 layers)	(1,000 layers)	(eggs)	(eggs)
Alabama	1,334	1,511	8,977	9,034	1,894	1,959
Arkansas	3,385	3,803	11,743	12,117	2,010	2,063
California	18,967	19,296	19,262	19,652	2,264	2,280
Colorado	4,170	3,762	4,625	4,197	2,227	2,311
Connecticut	2,162	2,210	2,232	2,274	2,375	2,375
Florida	9,168	8,458	9,553	8,797	2,313	2,319
Georgia	7,414	8,619	16,147	16,870	2,155	2,081
Illinois	4,238	3,799	4,446	4,065	2,362	2,386
Indiana	22,001	23,913	22,720	24,669	2,311	2,238
Iowa	51,988	51,592	52,917	52,566	2,220	2,294
Maine	3,540	3,508	3,595	3,563	2,225	2,217
Maryland	1,737	2,328	1,874	2,439	2,241	2,255
Michigan	10,023	11,875	10,175	12,025	2,319	2,320
Minnesota	9,623	9,614	10,125	10,033	2,262	2,352
Mississippi	1,453	1,494	5,758	5,473	2,049	2,046
Missouri	5,907	5,636	7,292	7,072	2,386	2,277
Nebraska	8,931	8,974	8,981	9,024	2,427	2,460
New York	4,128	4,236	4,367	4,466	2,427	2,373
North Carolina	5,461	5,735	12,237	12,445	2,117	2,009
Ohio	27,486	26,730	27,999	27,229	2,232	2,233
Oregon	2,198	2,140	2,355	2,286	2,335	2,537
Pennsylvania	24,123	22,933	25,280	24,030	2,350	2,339
South Carolina	2,996	2,909	4,196	4,151	2,264	2,192
South Dakota	2,382	2,253	2,422	2,293	2,519	2,529
Texas	14,195	15,248	18,084	18,922	2,212	2,267
Utah	3,514	3,601	3,544	3,631	2,398	2,258
Virginia	1,280	1,164	2,988	2,706	2,108	1,959
Washington	6,779	6,752	6,894	6,867	2,306	2,243
Wisconsin	3,963	4,274	4,543	4,879	2,355	2,275
Other States ¹	11,749	12,226	19,997	19,745	2,125	2,132
United States	276,295	280,593	335,328	337,520	2,238	2,241

¹ Includes data for States not published in this table.

Layers on Hand and Eggs Produced – States and United States: During October 2011 and 2012

State	Table egg layers in flocks 30,000 and above		All layers		Eggs per 100 for all layers	
	2011	2012	2011	2012	2011	2012
	(1,000 layers)	(1,000 layers)	(1,000 layers)	(1,000 layers)	(eggs)	(eggs)
Alabama	1,417	1,535	9,015	9,025	1,963	2,006
Arkansas	3,408	3,919	11,485	12,212	2,064	2,137
California	19,183	19,144	19,476	19,501	2,352	2,364
Colorado	4,265	3,773	4,718	4,173	2,374	2,444
Connecticut	2,108	2,170	2,175	2,234	2,391	2,417
Florida	9,320	8,693	9,681	9,044	2,407	2,333
Georgia	7,611	8,812	16,100	17,000	2,224	2,171
Illinois	4,417	3,896	4,623	4,158	2,444	2,405
Indiana	21,871	24,200	22,559	25,014	2,332	2,275
Iowa	52,301	51,568	53,235	52,498	2,309	2,408
Maine	3,556	3,523	3,611	3,578	2,326	2,348
Maryland	1,782	2,326	1,924	2,440	2,339	2,336
Michigan	10,389	11,963	10,540	12,113	2,419	2,435
Minnesota	9,640	9,542	10,137	9,962	2,387	2,429
Mississippi	1,473	1,521	5,646	5,399	2,108	2,130
Missouri	5,684	6,295	7,097	7,782	2,409	2,287
Nebraska	8,999	9,124	9,049	9,174	2,486	2,496
New York	4,132	4,370	4,363	4,604	2,498	2,411
North Carolina	5,665	5,758	12,529	12,401	2,123	2,064
Ohio	27,225	27,464	27,740	27,920	2,343	2,346
Oregon	2,180	2,151	2,336	2,285	2,397	2,670
Pennsylvania	23,847	23,303	25,029	24,435	2,453	2,451
South Carolina	2,964	2,968	4,053	4,207	2,295	2,187
South Dakota	2,359	2,296	2,399	2,336	2,626	2,568
Texas	14,289	15,220	18,190	18,848	2,331	2,329
Utah	3,505	3,537	3,535	3,567	2,433	2,355
Virginia	1,284	1,254	3,019	2,788	2,219	2,080
Washington	6,783	6,787	6,898	6,902	2,464	2,362
Wisconsin	4,168	4,416	4,733	5,021	2,387	2,270
Other States ¹	11,700	12,290	19,989	19,852	2,181	2,211
United States	277,525	283,818	335,884	340,473	2,317	2,321

¹ Includes data for States not published in this table.

Egg Production by Type – States and United States: September 2011 and 2012

[Totals may not add due to rounding. Data by type of flock not shown for some States to avoid disclosing individual operations, data included in United States totals]

State	Total production		Table eggs		Hatching eggs	
	2011	2012	2011	2012	2011	2012
	(million eggs)	(million eggs)	(million eggs)	(million eggs)	(million eggs)	(million eggs)
Alabama	170	177	31	36	139	141
Arkansas	236	250	80	91	156	159
California	436	448	(D)	(D)	(D)	(D)
Colorado	103	97	(D)	(D)	(D)	(D)
Connecticut	53	54	(D)	(D)	(D)	(D)
Florida	221	204	215	199	6	5
Georgia	348	351	182	194	166	157
Illinois	105	97	102	93	3	4
Indiana	525	552	512	539	13	13
Iowa	1,175	1,206	1,160	1,190	15	16
Maine	80	79	(D)	(D)	(D)	(D)
Maryland	42	55	40	54	2	1
Michigan	236	279	(D)	(D)	(D)	(D)
Minnesota	229	236	221	229	8	7
Mississippi	118	112	36	37	82	75
Missouri	174	161	(D)	(D)	(D)	(D)
Nebraska	218	222	218	222	-	-
New York	106	106	(D)	(D)	(D)	(D)
North Carolina	259	250	137	135	122	115
Ohio	625	608	(D)	(D)	(D)	(D)
Oregon	55	58	53	56	2	2
Pennsylvania	594	562	576	544	18	18
South Carolina	95	91	75	70	20	21
South Dakota	61	58	61	58	-	-
Texas	400	429	(D)	(D)	(D)	(D)
Utah	85	82	85	82	-	-
Virginia	63	53	31	26	32	27
Washington	159	154	(D)	(D)	(D)	(D)
Wisconsin	107	111	(D)	(D)	(D)	(D)
Other States ¹	425	421	296	307	130	115
United States	7,503	7,563	6,476	6,577	1,028	987

- Represents zero.

(D) Withheld to avoid disclosing data for individual operations.

¹ Includes data for States not published in this table.

Egg Production by Type – States and United States: October 2011 and 2012

[Totals may not add due to rounding. Data by type of flock not shown for some States to avoid disclosing individual operations, data included in United States totals]

State	Total production		Table eggs		Hatching eggs	
	2011	2012	2011	2012	2011	2012
	(million eggs)	(million eggs)	(million eggs)	(million eggs)	(million eggs)	(million eggs)
Alabama	177	181	34	37	143	144
Arkansas	237	261	80	95	157	166
California	458	461	(D)	(D)	(D)	(D)
Colorado	112	102	(D)	(D)	(D)	(D)
Connecticut	52	54	(D)	(D)	(D)	(D)
Florida	233	211	227	206	6	5
Georgia	358	369	189	208	169	161
Illinois	113	100	110	96	3	4
Indiana	526	569	514	554	12	15
Iowa	1,229	1,264	1,213	1,249	16	15
Maine	84	84	(D)	(D)	(D)	(D)
Maryland	45	57	43	56	2	1
Michigan	255	295	(D)	(D)	(D)	(D)
Minnesota	242	242	233	235	9	7
Mississippi	119	115	36	39	83	76
Missouri	171	178	(D)	(D)	(D)	(D)
Nebraska	225	229	225	229	-	-
New York	109	111	(D)	(D)	(D)	(D)
North Carolina	266	256	140	134	126	122
Ohio	650	655	(D)	(D)	(D)	(D)
Oregon	56	61	54	59	2	2
Pennsylvania	614	599	595	580	19	19
South Carolina	93	92	73	70	20	22
South Dakota	63	60	63	60	-	-
Texas	424	439	(D)	(D)	(D)	(D)
Utah	86	84	86	84	-	-
Virginia	67	58	34	30	33	28
Washington	170	163	(D)	(D)	(D)	(D)
Wisconsin	113	114	(D)	(D)	(D)	(D)
Other States ¹	436	439	305	321	132	119
United States	7,783	7,903	6,734	6,883	1,050	1,021

- Represents zero.

(D) Withheld to avoid disclosing data for individual operations.

¹ Includes data for States not published in this table.

Forced Molt as Percent of All Layers by Month – United States: 2011-2012

[As of the first of the month. Blank data cells indicate estimation period has not yet begun]

Month	Being molted		Molt completed	
	2011 (percent)	2012 (percent)	2011 (percent)	2012 (percent)
January	2.8	2.8	21.2	19.9
February	3.6	4.8	20.2	18.8
March	3.0	3.8	20.1	19.9
April	2.6	2.8	20.0	19.7
May	3.0	4.3	20.0	19.6
June	3.8	2.9	19.5	20.3
July	3.5	2.9	19.6	20.4
August	3.6	2.4	19.5	20.6
September	3.2	2.9	20.3	19.8
October	3.9	3.5	20.4	20.6
November	2.5	2.2	21.2	20.9
December	1.7		21.1	

Forced Molt as Percent of All Layers – States and United States: November 1, 2011 and 2012

[As of the first of the month]

State	Being molted		Molt completed	
	2011 (percent)	2012 (percent)	2011 (percent)	2012 (percent)
Alabama	0.5	0.5	7.5	7.0
Arkansas	2.0	1.0	9.5	11.5
California	3.5	4.0	30.5	31.5
Colorado	-	8.0	19.5	35.0
Connecticut	-	-	9.5	9.5
Florida	6.0	3.0	40.0	40.0
Georgia	-	1.0	15.0	15.5
Illinois	0.5	-	25.5	17.5
Indiana	4.5	3.0	29.0	29.0
Iowa	2.5	3.5	35.0	30.0
Maine	-	-	-	-
Maryland	5.0	-	8.0	-
Michigan	4.0	2.0	13.0	12.5
Minnesota	3.0	4.0	25.0	23.0
Mississippi	2.0	1.0	12.0	11.0
Missouri	5.0	-	21.0	15.0
Nebraska	-	2.5	2.0	2.0
New York	1.0	3.0	6.0	9.0
North Carolina	-	-	16.5	15.5
Ohio	2.0	2.0	13.5	23.5
Oregon	4.0	2.0	36.5	30.5
Pennsylvania	4.5	1.5	9.5	9.0
South Carolina	2.0	-	18.0	17.0
South Dakota	-	-	10.0	25.0
Texas	1.0	1.0	22.5	20.0
Utah	3.0	1.5	39.5	40.0
Virginia	1.5	-	16.0	19.0
Washington	4.5	7.5	37.0	26.5
Wisconsin	2.0	2.0	30.5	28.0
Other States ¹	2.6	2.0	14.8	18.4
United States	2.5	2.2	21.2	20.9

- Represents zero.

¹ Includes data for States not published in this table.

Hatchery Production – United States: 2011 and 2012

Item	2011	2012	2012 as percent of 2011
	(1,000)	(1,000)	(percent)
Egg-type			
Eggs in incubators on November 1	37,652	34,975	93
Chicks hatched during October	37,624	39,077	104
Chicks hatched January through October	402,246	394,608	98
Pullets hatched during October for intended placements:			
Hatchery supply flocks	266	196	74
Cumulative potential placements 7-18 months earlier ¹	2,915	3,061	105
Broiler-type			
Eggs in incubators on November 1	574,874	568,524	99
Chicks hatched during October	715,886	726,908	102
Chicks hatched January through October	7,595,425	7,468,873	98
Pullets hatched during October for intended placements:			
Hatchery supply flocks	6,289	6,218	99
Cumulative potential placements 7-15 months earlier ²	63,251	60,402	95

¹ 2012 includes pullet chicks hatched April 2011 through March 2012.

² 2012 includes pullet chicks hatched July 2011 through March 2012.

Egg-Type Eggs in Incubators – Regions and United States: November 1, 2011 and 2012

[See regional listing on page 19]

Region	2011	2012	2012 as percent of 2011
	(1,000 eggs)	(1,000 eggs)	(percent)
North Atlantic	5,205	3,125	60
East North Central	6,933	5,893	85
West North Central	8,508	9,502	112
South Atlantic	4,948	4,838	98
South Central	4,939	5,005	101
West	7,119	6,612	93
United States	37,652	34,975	93

Egg-Type Chicks Hatched by Month – United States: 2011-2012

[Blank data cells indicate estimation period has not yet begun]

Month	By months			Cumulative		
	2011	2012	2012 as percent of 2011	2011	2012	2012 as percent of 2011
	(1,000 chicks)	(1,000 chicks)	(percent)	(1,000 chicks)	(1,000 chicks)	(percent)
January	40,590	40,277	99	40,590	40,277	99
February	37,415	39,300	105	78,005	79,577	102
March	43,603	40,622	93	121,608	120,199	99
April	42,959	39,702	92	164,567	159,901	97
May	42,949	43,280	101	207,516	203,181	98
June	38,920	39,410	101	246,436	242,591	98
July	36,950	34,041	92	283,386	276,632	98
August	41,431	41,357	100	324,817	317,989	98
September	39,805	37,542	94	364,622	355,531	98
October	37,624	39,077	104	402,246	394,608	98
November	37,512			439,758		
December	39,071			478,829		

Intended Placements of Egg-Type Pullet Chicks for Hatchery Supply Flocks by Month – United States: 2011-2012

[Blank data cells indicate estimation period has not yet begun]

Month	Pullet chicks hatched		2012 as percent of 2011	Cumulative potential placements relative to current supply flocks 7-18 months earlier ¹	
	2011	2012		2012	2013
	(1,000 chicks)	(1,000 chicks)	(percent)	(1,000 chicks)	(1,000 chicks)
January	220	263	120	2,920	2,834
February	244	238	98	2,936	2,871
March	253	210	83	3,001	2,890
April	287	137	48	3,002	2,844
May	196	302	154	3,098	2,774
June	302	119	39	3,053	
July	234	271	116	3,067	
August	318	337	106	3,110	
September	252	206	82	3,104	
October	266	196	74	3,061	
November	218			2,911	
December	277			3,017	
Total	3,067				

¹ For October 2012, includes breeder pullet chicks hatched April 2011 through March 2012. The 7-18 months represent the first laying cycle. Molting and additional laying cycles will increase the cumulative potential placements.

Broiler-Type Eggs in Incubators – Regions and United States: November 1, 2011 and 2012

[See regional listing on page 19]

Region	2011	2012	2012 as percent of 2011
	(1,000 eggs)	(1,000 eggs)	(percent)
North Atlantic	11,986	10,488	88
East North Central	11,906	12,096	102
West North Central	26,311	27,389	104
South Atlantic	220,339	218,043	99
South Central	281,841	280,475	100
West	22,491	20,033	89
United States	574,874	568,524	99

Broiler-Type Chicks Hatched – States and United States: October 2011 and 2012

State	During October			January-October		
	2011	2012	2012 as percent of 2011	2011	2012	2012 as percent of 2011
	(1,000 chicks)	(1,000 chicks)	(percent)	(1,000 chicks)	(1,000 chicks)	(percent)
Alabama	99,703	100,378	101	1,056,876	1,025,773	97
Arkansas	72,260	75,937	105	817,108	765,784	94
Delaware	11,117	11,887	107	126,875	124,422	98
Florida	4,723	4,773	101	48,028	47,898	100
Georgia	113,376	116,206	102	1,185,293	1,173,553	99
Kentucky	26,387	27,459	104	278,519	276,304	99
Louisiana	12,028	12,034	100	122,160	125,309	103
Maryland	26,054	26,382	101	274,677	267,274	97
Mississippi	62,217	61,667	99	674,966	654,383	97
Missouri	28,178	27,927	99	285,098	288,935	101
North Carolina	68,184	70,243	103	716,358	728,635	102
Oklahoma	23,937	24,622	103	246,935	245,348	99
Pennsylvania	13,117	13,107	100	138,601	135,075	97
South Carolina	19,142	18,174	95	191,159	187,285	98
Texas	50,783	50,570	100	543,368	534,434	98
Virginia	20,895	21,838	105	222,835	225,174	101
California, Tennessee, and West Virginia	38,702	36,488	94	409,565	393,775	96
19 States ¹	690,803	699,692	101	7,338,421	7,199,361	98
Other States ²	25,083	27,216	109	257,004	269,512	105
United States	715,886	726,908	102	7,595,425	7,468,873	98

¹ States in the weekly hatchery production estimating program.

² Not published separately to avoid disclosing data for individual operations.

Broiler-Type Chicks Hatched by Month – United States: 2011-2012

[Blank data cells indicate estimation period has not yet begun]

Month	By months			Cumulative		
	2011	2012	2012 as percent of 2011	2011	2012	2012 as percent of 2011
	(1,000 chicks)	(1,000 chicks)	(percent)	(1,000 chicks)	(1,000 chicks)	(percent)
January	781,313	751,870	96	781,313	751,870	96
February	708,722	705,113	99	1,490,035	1,456,983	98
March	793,765	764,225	96	2,283,800	2,221,208	97
April	777,866	747,697	96	3,061,666	2,968,905	97
May	804,484	777,636	97	3,866,150	3,746,541	97
June	766,371	756,316	99	4,632,521	4,502,857	97
July	768,432	762,749	99	5,400,953	5,265,606	97
August	758,980	758,292	100	6,159,933	6,023,898	98
September	719,606	718,067	100	6,879,539	6,741,965	98
October	715,886	726,908	102	7,595,425	7,468,873	98
November	702,169			8,297,594		
December	758,382			9,055,976		

Intended Placements of Broiler-Type Pullet Chicks for Hatchery Supply Flocks by Month and Total: 2011-2012

[Blank data cells indicate estimation period has not yet begun]

Month	Pullet chicks hatched		2012 as percent of 2011	Cumulative potential placements relative to current supply flocks 7-15 months earlier ¹	
	2011 (1,000 chicks)	2012 (1,000 chicks)		2012 (1,000 chicks)	2013 (1,000 chicks)
United States placements					
January	6,557	6,673	102	64,111	60,864
February	7,284	7,025	96	63,679	60,646
March	7,058	6,753	96	63,323	61,094
April	7,044	6,524	93	63,209	61,334
May	7,721	7,472	97	62,941	60,879
June	7,211	6,800	94	62,547	
July	6,444	6,071	94	61,927	
August	7,233	7,338	101	61,556	
September	6,657	6,678	100	60,860	
October	6,289	6,218	99	60,402	
November	6,890			60,482	
December	6,438			60,721	
Annual total	82,826				
Total placements ²					
January	8,187	8,201	100		
February	8,931	8,818	99		
March	9,023	8,525	94		
April	8,944	8,232	92		
May	9,612	9,430	98		
June	9,225	8,554	93		
July	8,131	7,447	92		
August	8,700	9,241	106		
September	8,546	8,296	97		
October	7,938	7,811	98		
November	8,489				
December	8,279				
Annual total	104,005				

¹ For October 2012, includes breeder pullet chicks hatched July 2011 through March 2012.

² United States production of intended placements worldwide.

Statistical Methodology

Survey Procedures: Primary data for the *Chickens and Eggs* report are from weekly and/or monthly questionnaires sent to producers. An attempt is made to collect information for layer and egg estimates from each known contractor and independent producer who has at least 30,000 table egg layers, flocks of hatchery supply layers, or pullet only operations with at least 500 pullets. Coverage for operations with less than 30,000 table egg layers are estimated each month based on data reported in December. Approximately 650 contractors, independent egg producers, and pullet only operations are contacted each month. All known hatcheries, approximately 300, are contacted for information on a weekly and/or monthly basis.

Estimating Procedures: Sound statistical methodology is employed to derive estimates from the reported data. All data are analyzed for unusual values. Data from each operation are compared to their own past operating profile and to trends from similar operations. Data for missing operations are estimated based on similar operations or historical data. NASS field offices prepare these estimates by using a combination of survey indications and historic trends. Individual State estimates are reviewed by the Agricultural Statistics Board for reasonableness. Individual hatchery data are summed to State, regional, and United States totals.

For chicken hatcheries, chicks hatched consist of all chicks of domesticated breeds including males and chicks destined for hatchery supply flocks and research purposes. Eggs set are eggs in incubators for the purpose of hatching. The relationship of egg-type chicks hatched to chicken inventory and poultry marketings are carefully monitored. The disposition of egg-type chicks hatched prior to placement into the laying flock can vary significantly, which can make comparisons to changes in layer inventory inconsistent over time. Broiler chicks placed are specifically placed on feed for meat production. Intended placement data reported by leading breeders include pullet chicks expected from eggs sold the preceding month. The breeders in this report account for a large percentage of replacement pullets for hatchery supply flocks. Production of replacement pullets by these breeders indicates the number of pullets available to hatchery supply layer flocks several months before the pullets will actually move into the laying flocks. "Hatchery Supply Flocks" include all generations of layers which could lay eggs to supply a hatchery. This includes the generations of parents, grandparents, great-grandparents, pedigree, etc. Also included are research flocks, vaccine flocks, and specific pathogen-free flocks. The broiler cumulative potential placements are a moving total of the intended placements 7-15 months earlier. The egg-type cumulative potential placements of 7-18 months earlier represent the first laying cycle. Molting and additional laying cycles will increase the cumulative potential placements of egg-type hatching flocks.

Revision Policy: The previous month's estimates are subject to revision if late reports or corrected data indicates a different level. Additionally, revisions after the monthly report will be made at the end of the marketing year and published in the annual reports of *Chickens and Eggs Summary* and *Hatchery Production Summary*. Estimates will also be reviewed for chickens and eggs after data from the 5-year Census of Agriculture are available. No revisions will be made after that date.

Reliability: Estimates are based on a census of all known contractors and independent producers who have at least 30,000 table egg layers, flocks of hatchery supply layers, pullet only operations with at least 500 pullets, or operating hatcheries and therefore, have no sampling error. However, estimates are subject to errors such as omission, duplication, and mistakes in reporting, recording, and processing the data. While these errors cannot be measured directly, they are minimized through strict quality controls in the data collection process and a careful review of all reported data for consistency and reasonableness.

To assist in evaluating the reliability of the estimates in this report, the "Root Mean Square Error" is shown for selected items in the following table. The "Root Mean Square Error" is a statistical measure based on past performance and is computed using the differences between first and final estimates. The "Root Mean Square Error" for all layers over the past 24 months is 0.2 percent. This means that chances are 2 out of 3 that the final estimate will not be above or below the current estimate of 340 million layers by more than 0.2 percent. Chances are 9 out of 10 that the difference will not exceed 0.3 percent.

Reliability of Layer and Egg Estimates

[Based on data for the past twenty-four months]

Item	Root mean square error	90 percent confidence level	Difference between first and latest estimate				
			Average	Smallest	Largest	Months	
						Below latest	Above latest
All layers	(percent) 0.2	(percent) 0.3	(1,000) 402	(1,000) 25	(1,000) 1,904	(number) 16	(number) 8
Eggs	0.2	0.3	(million) 8	(million) 1	(million) 38	17	7

Regional Listing

- North Atlantic:** Connecticut, Maine, Massachusetts, New Hampshire, New Jersey, New York, Pennsylvania, Rhode Island, Vermont.
- East North Central:** Illinois, Indiana, Michigan, Ohio, Wisconsin.
- West North Central:** Iowa, Kansas, Minnesota, Missouri, Nebraska, North Dakota, South Dakota.
- South Atlantic:** Delaware, Florida, Georgia, Maryland, North Carolina, South Carolina, Virginia, West Virginia.
- South Central:** Alabama, Arkansas, Kentucky, Louisiana, Mississippi, Oklahoma, Tennessee, Texas.
- West:** Alaska, Arizona, California, Colorado, Hawaii, Idaho, Montana, New Mexico, Nevada, Oregon, Utah, Washington, Wyoming.

Terms and Definitions of Chickens and Eggs Estimates

All Layers includes both table egg and hatching egg flocks regardless of size.

Intended Placements are reported by leading breeders. Coverage may not be 100 percent. Includes expected pullet chicks from eggs sold during the preceding month at the rate of 125 pullet chicks per case of 30 dozen eggs.

Information Contacts

Listed below are the commodity specialists in the Livestock Branch of the National Agricultural Statistics Service to contact for additional information. E-mail inquiries may be sent to nass@nass.usda.gov

- Dan Kerestes, Chief, Livestock Branch (202) 720-3570
- Bruce Boess, Head, Poultry and Specialty Commodities Section (202) 720-4447
- Cody Brokmeyer – Poultry Slaughter, Turkey Hatchery, Turkeys Raised (202) 690-3237
- David Colwell – Cold Storage (202) 720-8784
- LaKeya Jones – Catfish Processing, Catfish Production, Trout Production,
Census of Aquaculture, Honey, Egg Products, Mink (202) 720-0585
- Kim Linonis – Layers, Eggs (202) 690-8632
- Miste Salmon – Broiler Hatchery, Chicken Hatchery (202) 720-3244

Access to NASS Reports

For your convenience, you may access NASS reports and products the following ways:

- All reports are available electronically, at no cost, on the NASS web site: <http://www.nass.usda.gov>
- Both national and state specific reports are available via a free e-mail subscription. To set-up this free subscription, visit <http://www.nass.usda.gov> and in the “Follow NASS” box under “Receive reports by Email,” click on “National” or “State” to select the reports you would like to receive.

For more information on NASS surveys and reports, call the NASS Agricultural Statistics Hotline at (800) 727-9540, 7:30 a.m. to 4:00 p.m. ET, or e-mail: nass@nass.usda.gov.

The United States Department of Agriculture (USDA) prohibits discrimination in all its programs and activities on the basis of race, color, national origin, age, disability, and where applicable, sex, marital status, familial status, parental status, religion, sexual orientation, political beliefs, genetic information, reprisal, or because all or a part of an individual's income is derived from any public assistance program. (Not all prohibited bases apply to all programs.) Persons with disabilities who require alternative means for communication of program information (Braille, large print, audiotape, etc.) should contact USDA's TARGET Center at (202) 720-2600 (voice and TDD).

To file a complaint of discrimination, write to USDA, Assistant Secretary for Civil Rights, Office of the Assistant Secretary for Civil Rights, 1400 Independence Avenue, S.W., Stop 9410, Washington, DC 20250-9410, or call toll-free at (866) 632-9992 (English) or (800) 877-8339 (TDD) or (866) 377-8642 (English Federal-relay) or (800) 845-6136 (Spanish Federal-relay). USDA is an equal opportunity provider and employer.