



Chickens and Eggs

ISSN: 1948-9064

Released December 21, 2012, by the National Agricultural Statistics Service (NASS), Agricultural Statistics Board, United States Department of Agriculture (USDA).

November Egg Production Up 3 Percent

United States egg production totaled 7.85 billion during November 2012, up 3 percent from last year. Production included 6.85 billion table eggs, and 997 million hatching eggs, of which 930 million were broiler-type and 67 million were egg-type. The total number of layers during November 2012 averaged 345 million, up 2 percent from last year. November egg production per 100 layers was 2,275 eggs, up 1 percent from November 2011.

All layers in the United States on December 1, 2012 totaled 346 million, up 2 percent from last year. The 346 million layers consisted of 293 million layers producing table or market type eggs, 50.0 million layers producing broiler-type hatching eggs, and 2.95 million layers producing egg-type hatching eggs. Rate of lay per day on December 1, 2012, averaged 76.2 eggs per 100 layers, up 1 percent from December 1, 2011.

Egg-Type Chicks Hatched Down 5 Percent

Egg-type chicks hatched during November 2012 totaled 35.6 million, down 5 percent from November 2011. Eggs in incubators totaled 34.0 million on December 1, 2012, down 15 percent from a year ago.

Domestic placements of egg-type pullet chicks for future hatchery supply flocks by leading breeders totaled 242 thousand during November 2012, up 11 percent from November 2011.

Broiler-Type Chicks Hatched Down 1 Percent

Broiler-type chicks hatched during November 2012 totaled 693 million, down 1 percent from November 2011. Eggs in incubators totaled 615 million on December 1, 2012, up 1 percent from a year earlier.

Leading breeders placed 6.77 million broiler-type pullet chicks for future domestic hatchery supply flocks during November 2012, down 2 percent from November 2011.

This page intentionally left blank.

Contents

Average Number of All Layers on Hand During the Month – United States: 2011-2012.....	4
Egg Production During the Month by Type – United States: 2011-2012.....	4
Average Number of Layers During the Month – United States.....	5
All Egg Production During the Month – United States	5
Layers on Hand and Eggs Produced by Type and Forced Molt – United States: October-November 2011 and 2012.....	6
Layers on Hand and Eggs Produced by Type and Forced Molt – United States: November-December 2011 and 2012	7
Layers on Hand and Eggs Produced – States and United States: During October 2011 and 2012.....	8
Layers on Hand and Eggs Produced – States and United States: During November 2011 and 2012.....	9
Egg Production by Type – States and United States: October 2011 and 2012	10
Egg Production by Type – States and United States: November 2011 and 2012	11
Forced Molt as Percent of All Layers by Month – United States: 2011-2012.....	12
Forced Molt as Percent of All Layers – States and United States: December 1, 2011 and 2012	12
Hatchery Production – United States: 2011 and 2012	13
Egg-Type Eggs in Incubators – Regions and United States: December 1, 2011 and 2012	14
Egg-Type Chicks Hatched by Month – United States: 2011-2012.....	14
Intended Placements of Egg-Type Pullet Chicks for Hatchery Supply Flocks by Month – United States: 2011-2012.....	15
Broiler-Type Eggs in Incubators – Regions and United States: December 1, 2011 and 2012	15
Broiler-Type Chicks Hatched – States and United States: November 2011 and 2012	16
Broiler-Type Chicks Hatched by Month – United States: 2011-2012.....	16
Intended Placements of Broiler-Type Pullet Chicks for Hatchery Supply Flocks by Month and Total: 2011-2012.....	17
Statistical Methodology	18
Regional Listing.....	19
Terms and Definitions of Chickens and Eggs Estimates	19
Information Contacts	19

Average Number of All Layers on Hand During the Month – United States: 2011-2012

Month	2011	2012
	(1,000 layers)	(1,000 layers)
December ¹	343,083	338,158
January	342,266	337,618
February	339,787	338,151
March	340,655	339,626
April	340,896	339,517
May	337,897	338,447
June	336,411	336,787
July	335,799	335,020
August	335,412	335,615
September	335,328	337,520
October	335,884	341,265
November	337,716	344,869

¹ December preceding year.

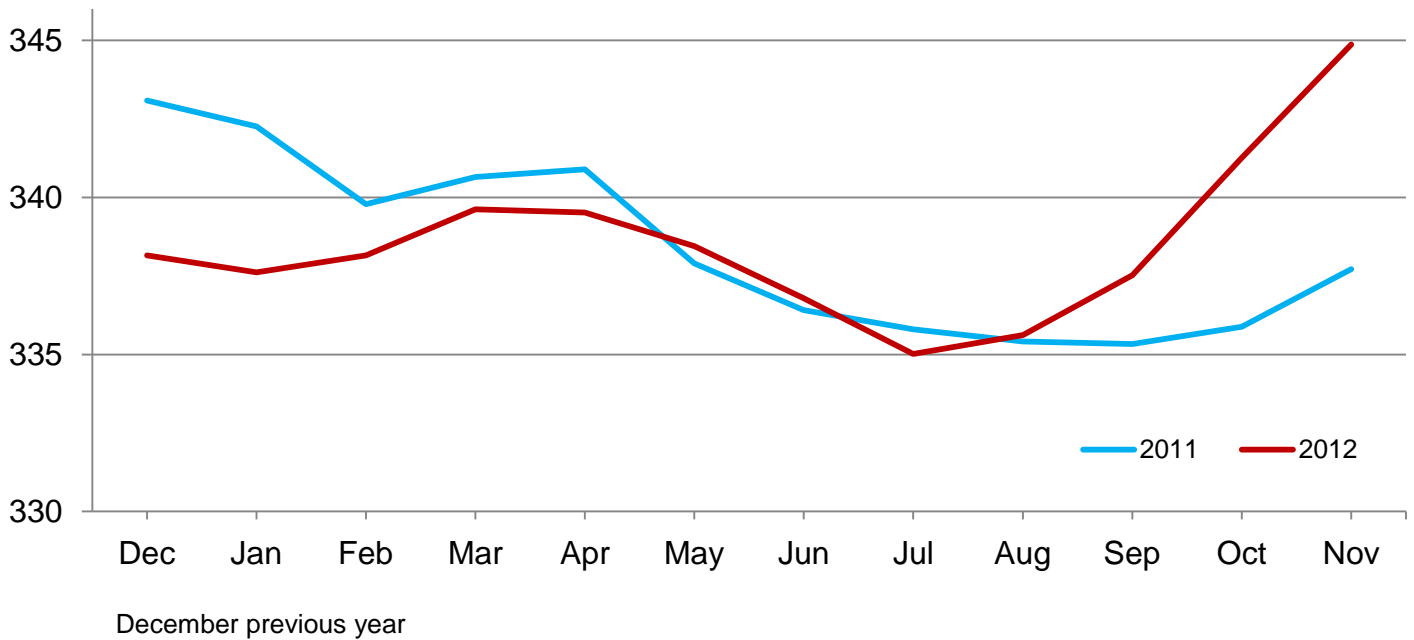
Egg Production During the Month by Type – United States: 2011-2012

Month	Total eggs		Table eggs		Hatching eggs	
	2011	2012	2011	2012	2011	2012
	(million eggs)	(million eggs)	(million eggs)	(million eggs)	(million eggs)	(million eggs)
December ¹	7,927	7,932	6,845	6,894	1,083	1,038
January	7,833	7,831	6,736	6,786	1,098	1,046
February	7,013	7,235	6,022	6,247	990	987
March	7,840	7,859	6,735	6,800	1,106	1,059
April	7,617	7,582	6,534	6,545	1,083	1,038
May	7,773	7,770	6,651	6,693	1,123	1,078
June	7,503	7,501	6,421	6,470	1,083	1,032
July	7,732	7,727	6,633	6,677	1,100	1,051
August	7,719	7,802	6,644	6,764	1,076	1,039
September	7,503	7,563	6,476	6,577	1,028	987
October	7,783	7,921	6,734	6,901	1,050	1,021
November	7,612	7,846	6,605	6,850	1,007	997
During year	91,855	92,569	79,036	80,204	12,827	12,373

¹ December preceding year.

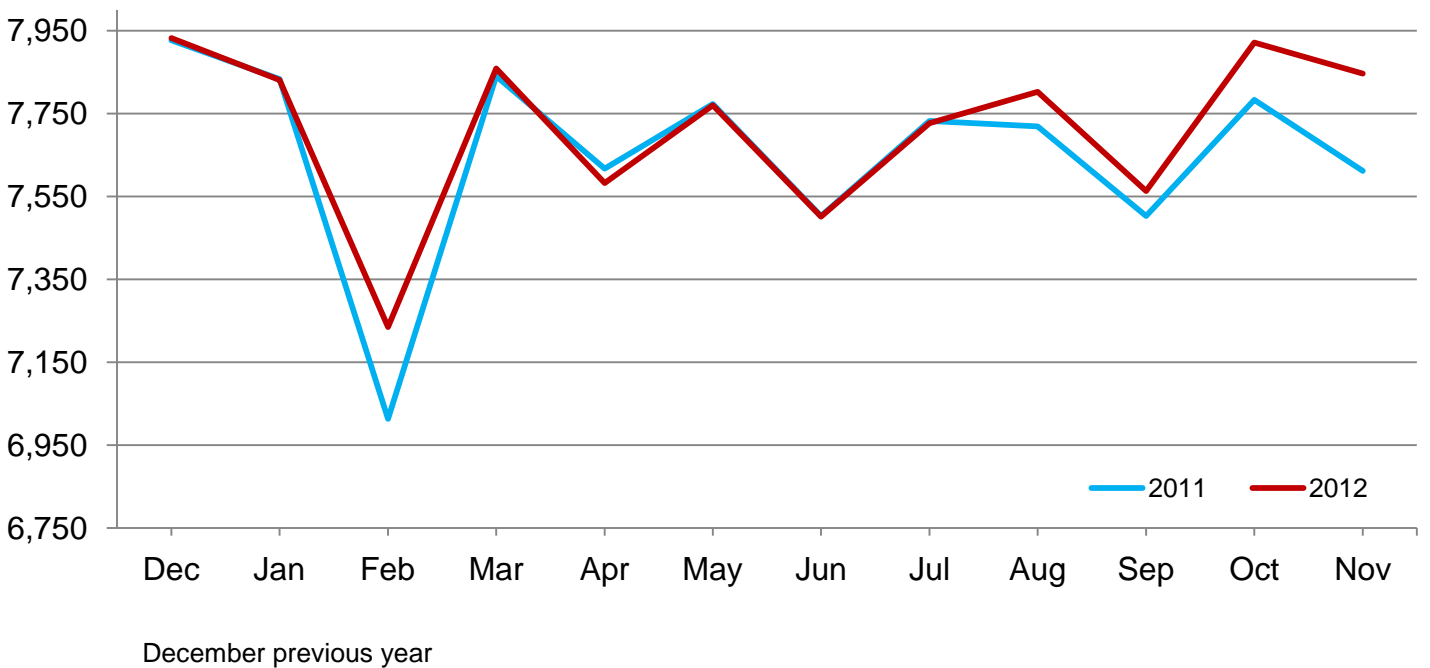
Average Layers During the Month – United States

Million layers



All Egg Production During the Month – United States

Million eggs



**Layers on Hand and Eggs Produced by Type and Forced Molt – United States:
October-November 2011 and 2012**

[[Totals may not add due to rounding]]

Item	2011	2012	2012 as percent of 2011
Layers during October			
All layers1,000	335,884	341,265	102
Table egg type1,000	282,085	289,213	103
Hatching egg type1,000	53,799	52,052	97
Broiler-type hatching1,000	50,840	49,182	97
Egg-type hatching1,000	2,959	2,870	97
Eggs per 100 layers during October			
All layers number	2,317	2,321	100
Table egg type number	2,387	2,386	100
Hatching egg type number	1,952	1,962	101
Broiler-type hatching number	1,926	1,936	101
Egg-type hatching number	2,399	2,404	100
Eggs produced during October			
All layers million	7,783	7,921	102
Table egg type million	6,734	6,901	102
Hatching egg type million	1,050	1,021	97
Broiler-type hatching million	979	952	97
Egg-type hatching million	71	69	97
Layers on November 1			
All layers1,000	336,909	343,995	102
Table egg type1,000	283,370	292,116	103
Hatching egg type1,000	53,539	51,879	97
Broiler-type hatching1,000	50,594	49,063	97
Egg-type hatching1,000	2,945	2,816	96
Eggs per 100 layers on November 1			
All layers number	74.8	75.3	101
Table egg type number	77.1	77.4	100
Hatching egg type number	62.6	63.8	102
Broiler-type hatching number	61.8	63.0	102
Egg-type hatching number	76.8	77.8	101
Forced molt layers on November 1			
Being moltedpercent	2.5	2.3	92
Molt completedpercent	21.2	21.1	100
Layers sold for slaughter during October1,000	14,300	12,708	89
Layers rendered, died, destroyed, composted or disappeared for any reason during October1,000	5,885	6,270	107
Pullets on November 11,000	103,100	103,003	100
Pullets added during October ¹1,000	21,318	23,018	108

¹ Pullet chicks less than 3 days old added to pullet flocks.

**Layers on Hand and Eggs Produced by Type and Forced Molt – United States:
November-December 2011 and 2012**

[Totals may not add due to rounding]

Item	2011	2012	2012 as percent of 2011
Layers during November			
All layers 1,000	337,716	344,869	102
Table egg type 1,000	284,440	292,432	103
Hatching egg type 1,000	53,276	52,437	98
Broiler-type hatching 1,000	50,409	49,553	98
Egg-type hatching 1,000	2,867	2,884	101
Eggs per 100 layers during November			
All layers number	2,254	2,275	101
Table egg type number	2,322	2,342	101
Hatching egg type number	1,890	1,901	101
Broiler-type hatching number	1,863	1,877	101
Egg-type hatching number	2,372	2,323	98
Eggs produced during November			
All layers million	7,612	7,846	103
Table egg type million	6,605	6,850	104
Hatching egg type million	1,007	997	99
Broiler-type hatching million	939	930	99
Egg-type hatching million	68	67	99
Layers on December 1			
All layers 1,000	338,472	345,712	102
Table egg type 1,000	285,486	292,730	103
Hatching egg type 1,000	52,986	52,982	100
Broiler-type hatching 1,000	50,205	50,037	100
Egg-type hatching 1,000	2,781	2,945	106
Eggs per 100 layers on December 1			
All layers number	75.4	76.2	101
Table egg type number	77.7	78.6	101
Hatching egg type number	63.1	62.6	99
Broiler-type hatching number	62.0	61.8	100
Egg-type hatching number	81.7	77.1	94
Forced molt layers on December 1			
Being molted percent	1.7	1.5	88
Molt completed percent	21.1	20.5	97
Layers sold for slaughter during November 1,000	12,471	12,056	97
Layers rendered, died, destroyed, composted or disappeared for any reason during November 1,000	6,998	5,442	78
Pullets on December 1 1,000	101,928	103,239	101
Pullets added during November ¹ 1,000	20,533	20,261	99

¹ Pullet chicks less than 3 days old added to pullet flocks.

Layers on Hand and Eggs Produced – States and United States: During October 2011 and 2012

State	Table egg layers in flocks 30,000 and above		All layers		Eggs per 100 for all layers	
	2011	2012	2011	2012	2011	2012
	(1,000 layers)	(1,000 layers)	(1,000 layers)	(1,000 layers)	(eggs)	(eggs)
Alabama	1,417	1,535	9,015	9,025	1,963	2,006
Arkansas	3,408	3,919	11,485	12,212	2,064	2,137
California	19,183	19,144	19,476	19,501	2,352	2,364
Colorado	4,265	3,773	4,718	4,173	2,374	2,444
Connecticut	2,108	2,170	2,175	2,234	2,391	2,417
Florida	9,320	8,693	9,681	9,044	2,407	2,333
Georgia	7,611	8,903	16,100	17,091	2,224	2,171
Illinois	4,417	3,896	4,623	4,158	2,444	2,405
Indiana	21,871	24,620	22,559	25,434	2,332	2,276
Iowa	52,301	51,568	53,235	52,498	2,309	2,408
Maine	3,556	3,523	3,611	3,578	2,326	2,348
Maryland	1,782	2,326	1,924	2,440	2,339	2,336
Michigan	10,389	11,963	10,540	12,113	2,419	2,435
Minnesota	9,640	9,542	10,137	9,962	2,387	2,429
Mississippi	1,473	1,521	5,646	5,399	2,108	2,130
Missouri	5,684	6,295	7,097	7,782	2,409	2,287
Nebraska	8,999	9,124	9,049	9,174	2,486	2,496
New York	4,132	4,370	4,363	4,604	2,498	2,411
North Carolina	5,665	5,758	12,529	12,401	2,123	2,064
Ohio	27,225	27,518	27,740	27,974	2,343	2,345
Oregon	2,180	2,151	2,336	2,285	2,397	2,670
Pennsylvania	23,847	23,530	25,029	24,662	2,453	2,449
South Carolina	2,964	2,968	4,053	4,207	2,295	2,187
South Dakota	2,359	2,296	2,399	2,336	2,626	2,568
Texas	14,289	15,220	18,190	18,848	2,331	2,329
Utah	3,505	3,537	3,535	3,567	2,433	2,355
Virginia	1,284	1,254	3,019	2,788	2,219	2,080
Washington	6,783	6,787	6,898	6,902	2,464	2,362
Wisconsin	4,168	4,416	4,733	5,021	2,387	2,270
Other States ¹	11,700	12,290	19,989	19,852	2,181	2,211
United States	277,525	284,610	335,884	341,265	2,317	2,321

¹ Includes data for States not published in this table.

Layers on Hand and Eggs Produced – States and United States: During November 2011 and 2012

State	Table egg layers in flocks 30,000 and above		All layers		Eggs per 100 for all layers	
	2011	2012	2011	2012	2011	2012
	(1,000 layers)	(1,000 layers)	(1,000 layers)	(1,000 layers)	(eggs)	(eggs)
Alabama	1,468	1,537	9,045	8,995	1,924	1,957
Arkansas	3,524	3,780	11,706	12,232	2,033	2,060
California	19,425	19,386	19,744	19,743	2,289	2,284
Colorado	4,268	3,749	4,712	4,178	2,377	2,370
Connecticut	2,167	2,234	2,233	2,299	2,284	2,305
Florida	9,599	8,609	9,938	8,942	2,355	2,281
Georgia	7,981	9,011	16,236	17,294	2,125	2,116
Illinois	4,348	4,002	4,554	4,257	2,350	2,349
Indiana	22,120	25,246	22,778	26,048	2,243	2,234
Iowa	52,256	51,531	53,193	52,466	2,241	2,348
Maine	3,547	3,515	3,602	3,570	2,249	2,297
Maryland	1,892	2,302	2,028	2,413	2,367	2,279
Michigan	10,574	12,200	10,724	12,350	2,378	2,397
Minnesota	9,554	9,547	10,046	9,972	2,289	2,337
Mississippi	1,519	1,547	5,593	5,405	2,038	2,072
Missouri	5,580	6,651	7,029	8,185	2,205	2,285
Nebraska	9,013	9,246	9,063	9,296	2,450	2,399
New York	4,198	4,510	4,425	4,747	2,418	2,402
North Carolina	5,753	5,889	12,659	12,581	1,983	2,035
Ohio	27,367	28,101	27,880	28,521	2,306	2,374
Oregon	2,220	2,135	2,362	2,268	2,456	2,646
Pennsylvania	23,873	24,020	25,093	25,184	2,399	2,410
South Carolina	3,155	3,054	4,221	4,279	2,180	2,150
South Dakota	2,391	2,213	2,431	2,253	2,427	2,530
Texas	14,332	15,175	18,204	18,822	2,346	2,231
Utah	3,479	3,654	3,509	3,684	2,394	2,362
Virginia	1,239	1,247	2,916	2,768	2,195	2,204
Washington	6,733	6,669	6,848	6,784	2,366	2,373
Wisconsin	4,346	4,744	4,905	5,350	2,345	2,280
Other States ¹	11,936	12,325	20,039	19,983	2,131	2,147
United States	279,857	287,829	337,716	344,869	2,254	2,275

¹ Includes data for States not published in this table.

Egg Production by Type – States and United States: October 2011 and 2012

[Totals may not add due to rounding. Data by type of flock not shown for some States to avoid disclosing individual operations, data included in United States totals]

State	Total production		Table eggs		Hatching eggs	
	2011	2012	2011	2012	2011	2012
	(million eggs)	(million eggs)	(million eggs)	(million eggs)	(million eggs)	(million eggs)
Alabama	177	181	34	37	143	144
Arkansas	237	261	80	95	157	166
California	458	461	(D)	(D)	(D)	(D)
Colorado	112	102	(D)	(D)	(D)	(D)
Connecticut	52	54	(D)	(D)	(D)	(D)
Florida	233	211	227	206	6	5
Georgia	358	371	189	210	169	161
Illinois	113	100	110	96	3	4
Indiana	526	579	514	564	12	15
Iowa	1,229	1,264	1,213	1,249	16	15
Maine	84	84	(D)	(D)	(D)	(D)
Maryland	45	57	43	56	2	1
Michigan	255	295	(D)	(D)	(D)	(D)
Minnesota	242	242	233	235	9	7
Mississippi	119	115	36	39	83	76
Missouri	171	178	(D)	(D)	(D)	(D)
Nebraska	225	229	225	229	-	-
New York	109	111	(D)	(D)	(D)	(D)
North Carolina	266	256	140	134	126	122
Ohio	650	656	(D)	(D)	(D)	(D)
Oregon	56	61	54	59	2	2
Pennsylvania	614	604	595	585	19	19
South Carolina	93	92	73	70	20	22
South Dakota	63	60	63	60	-	-
Texas	424	439	(D)	(D)	(D)	(D)
Utah	86	84	86	84	-	-
Virginia	67	58	34	30	33	28
Washington	170	163	(D)	(D)	(D)	(D)
Wisconsin	113	114	(D)	(D)	(D)	(D)
Other States ¹	436	439	305	321	132	119
United States	7,783	7,921	6,734	6,901	1,050	1,021

- Represents zero.

(D) Withheld to avoid disclosing data for individual operations.

¹ Includes data for States not published in this table.

Egg Production by Type – States and United States: November 2011 and 2012

[Totals may not add due to rounding. Data by type of flock not shown for some States to avoid disclosing individual operations, data included in United States totals]

State	Total production		Table eggs		Hatching eggs	
	2011	2012	2011	2012	2011	2012
	(million eggs)	(million eggs)	(million eggs)	(million eggs)	(million eggs)	(million eggs)
Alabama	174	176	35	37	139	139
Arkansas	238	252	83	90	155	162
California	452	451	(D)	(D)	(D)	(D)
Colorado	112	99	(D)	(D)	(D)	(D)
Connecticut	51	53	(D)	(D)	(D)	(D)
Florida	234	204	229	199	5	5
Georgia	345	366	187	210	158	156
Illinois	107	100	104	96	3	4
Indiana	511	582	500	568	11	14
Iowa	1,192	1,232	1,176	1,218	16	14
Maine	81	82	(D)	(D)	(D)	(D)
Maryland	48	55	46	54	2	1
Michigan	255	296	(D)	(D)	(D)	(D)
Minnesota	230	233	222	226	8	7
Mississippi	114	112	36	38	78	74
Missouri	155	187	(D)	(D)	(D)	(D)
Nebraska	222	223	222	223	-	-
New York	107	114	(D)	(D)	(D)	(D)
North Carolina	251	256	129	136	122	120
Ohio	643	677	(D)	(D)	(D)	(D)
Oregon	58	60	56	58	2	2
Pennsylvania	602	607	582	587	20	20
South Carolina	92	92	73	71	19	21
South Dakota	59	57	59	57	-	-
Texas	427	420	(D)	(D)	(D)	(D)
Utah	84	87	84	87	-	-
Virginia	64	61	33	33	31	28
Washington	162	161	(D)	(D)	(D)	(D)
Wisconsin	115	122	(D)	(D)	(D)	(D)
Other States ¹	427	429	303	311	125	119
United States	7,612	7,846	6,605	6,850	1,007	997

- Represents zero.

(D) Withheld to avoid disclosing data for individual operations.

¹ Includes data for States not published in this table.

Forced Molt as Percent of All Layers by Month – United States: 2011-2012

Month	Being molted		Molt completed	
	2011	2012	2011	2012
	(percent)	(percent)	(percent)	(percent)
January	2.8	2.8	21.2	19.9
February	3.6	4.8	20.2	18.8
March	3.0	3.8	20.1	19.9
April	2.6	2.8	20.0	19.7
May	3.0	4.3	20.0	19.6
June	3.8	2.9	19.5	20.3
July	3.5	2.9	19.6	20.4
August	3.6	2.4	19.5	20.6
September	3.2	2.9	20.3	19.8
October	3.9	3.5	20.4	20.6
November	2.5	2.3	21.2	21.1
December	1.7	1.5	21.1	20.5

Forced Molt as Percent of All Layers – States and United States: December 1, 2011 and 2012

[As of the first of the month]

State	Being molted		Molt completed	
	2011	2012	2011	2012
	(percent)	(percent)	(percent)	(percent)
Alabama	-	-	8.0	7.0
Arkansas	-	-	9.5	9.5
California	2.0	1.5	28.5	32.5
Colorado	2.0	-	14.0	34.5
Connecticut	-	-	8.5	8.5
Florida	3.0	-	39.0	39.0
Georgia	0.5	0.5	13.5	16.0
Illinois	-	2.5	25.5	14.5
Indiana	3.0	2.5	31.5	24.0
Iowa	3.5	2.5	33.0	26.5
Maine	-	-	-	-
Maryland	-	4.0	9.0	-
Michigan	1.5	1.0	16.5	12.5
Minnesota	2.0	3.0	26.0	24.0
Mississippi	-	-	14.0	9.5
Missouri	-	1.5	25.0	13.5
Nebraska	1.0	1.5	2.0	6.0
New York	2.0	-	5.5	10.5
North Carolina	-	-	15.0	14.5
Ohio	2.0	2.5	11.0	27.5
Oregon	2.5	-	34.5	26.5
Pennsylvania	2.5	1.0	13.5	9.0
South Carolina	-	-	18.5	15.5
South Dakota	-	4.5	9.0	18.5
Texas	-	1.5	23.5	24.0
Utah	3.0	1.5	35.0	37.5
Virginia	-	-	17.0	18.5
Washington	3.0	1.0	32.0	29.5
Wisconsin	2.0	2.5	28.0	29.0
Other States ¹	1.2	2.0	18.9	18.2
United States	1.7	1.5	21.1	20.5

- Represents zero.

¹ Includes data for States not published in this table.

Hatchery Production – United States: 2011 and 2012

Item	2011	2012	2012 as percent of 2011
	(1,000)	(1,000)	(percent)
Egg-type			
Eggs in incubators on December 1	40,100	34,009	85
Chicks hatched during November	37,512	35,617	95
Chicks hatched January through November	439,758	430,225	98
Pullets hatched during November for intended placements:			
Hatchery supply flocks	218	242	111
Cumulative potential placements 7-18 months earlier ¹	2,970	2,911	98
Broiler-type			
Eggs in incubators on December 1	606,395	614,759	101
Chicks hatched during November	702,169	693,354	99
Chicks hatched January through November	8,297,594	8,162,227	98
Pullets hatched during November for intended placements:			
Hatchery supply flocks	6,890	6,767	98
Cumulative potential placements 7-15 months earlier ²	63,620	60,482	95

¹ 2012 includes pullet chicks hatched May 2011 through April 2012.

² 2012 includes pullet chicks hatched August 2011 through April 2012.

Egg-Type Eggs in Incubators – Regions and United States: December 1, 2011 and 2012

[See regional listing on page 19]

Region	2011	2012	2012 as percent of 2011
	(1,000 eggs)	(1,000 eggs)	(percent)
North Atlantic	5,023	3,648	73
East North Central	8,886	5,838	66
West North Central	8,701	8,822	101
South Atlantic	4,600	4,263	93
South Central	5,426	5,834	108
West	7,464	5,604	75
United States	40,100	34,009	85

Egg-Type Chicks Hatched by Month – United States: 2011-2012

[Blank data cells indicate estimation period has not yet begun]

Month	By months			Cumulative		
	2011	2012	2012 as percent of 2011	2011	2012	2012 as percent of 2011
	(1,000 chicks)	(1,000 chicks)	(percent)	(1,000 chicks)	(1,000 chicks)	(percent)
January	40,590	40,277	99	40,590	40,277	99
February	37,415	39,300	105	78,005	79,577	102
March	43,603	40,622	93	121,608	120,199	99
April	42,959	39,702	92	164,567	159,901	97
May	42,949	43,280	101	207,516	203,181	98
June	38,920	39,410	101	246,436	242,591	98
July	36,950	34,041	92	283,386	276,632	98
August	41,431	41,357	100	324,817	317,989	98
September	39,805	37,542	94	364,622	355,531	98
October	37,624	39,077	104	402,246	394,608	98
November	37,512	35,617	95	439,758	430,225	98
December	39,071			478,829		

Intended Placements of Egg-Type Pullet Chicks for Hatchery Supply Flocks by Month – United States: 2011-2012

[Blank data cells indicate estimation period has not yet begun]

Month	Pullet chicks hatched		2012 as percent of 2011	Cumulative potential placements relative to current supply flocks 7-18 months earlier ¹	
	2011	2012		2012	2013
	(1,000 chicks)	(1,000 chicks)	(percent)	(1,000 chicks)	(1,000 chicks)
January	220	263	120	2,920	2,834
February	244	238	98	2,936	2,871
March	253	210	83	3,001	2,890
April	287	137	48	3,002	2,844
May	196	302	154	3,098	2,764
June	302	119	39	3,053	2,788
July	234	271	116	3,067	
August	318	337	106	3,110	
September	252	206	82	3,104	
October	266	186	70	3,061	
November	218	242	111	2,911	
December	277			3,017	
Total	3,067				

¹ For November 2012, includes breeder pullet chicks hatched May 2011 through April 2012. The 7-18 months represent the first laying cycle. Molting and additional laying cycles will increase the cumulative potential placements.

Broiler-Type Eggs in Incubators – Regions and United States: December 1, 2011 and 2012

[See regional listing on page 19]

Region	2011	2012	2012 as percent of 2011
	(1,000 eggs)	(1,000 eggs)	(percent)
North Atlantic	12,423	12,235	98
East North Central	12,587	12,820	102
West North Central	29,029	29,115	100
South Atlantic	229,664	236,089	103
South Central	299,753	303,404	101
West	22,939	21,096	92
United States	606,395	614,759	101

Broiler-Type Chicks Hatched – States and United States: November 2011 and 2012

State	During November			January-November		
	2011	2012	2012 as percent of 2011	2011	2012	2012 as percent of 2011
	(1,000 chicks)	(1,000 chicks)	(percent)	(1,000 chicks)	(1,000 chicks)	(percent)
Alabama	94,226	93,610	99	1,151,102	1,119,383	97
Arkansas	69,915	72,036	103	887,023	837,820	94
Delaware	10,654	11,826	111	137,529	136,248	99
Florida	4,722	4,588	97	52,750	52,486	99
Georgia	108,182	109,402	101	1,293,475	1,282,955	99
Kentucky	26,054	25,397	97	304,573	301,701	99
Louisiana	12,245	11,540	94	134,405	136,849	102
Maryland	26,530	25,215	95	301,207	292,489	97
Mississippi	61,100	59,671	98	736,066	714,054	97
Missouri	26,544	26,926	101	311,642	315,861	101
North Carolina	69,209	68,803	99	785,567	797,438	102
Oklahoma	23,251	23,258	100	270,186	268,606	99
Pennsylvania	13,152	12,342	94	151,753	147,417	97
South Carolina	18,661	18,154	97	209,820	205,439	98
Texas	51,007	49,172	96	594,375	583,606	98
Virginia	21,628	20,006	93	244,463	245,180	100
California, Tennessee, and West Virginia	39,504	36,080	91	449,069	429,855	96
19 States ¹	676,584	668,026	99	8,015,005	7,867,387	98
Other States ²	25,585	25,328	99	282,589	294,840	104
United States	702,169	693,354	99	8,297,594	8,162,227	98

¹ States in the weekly hatchery production estimating program.

² Not published separately to avoid disclosing data for individual operations.

Broiler-Type Chicks Hatched by Month – United States: 2011-2012

[Blank data cells indicate estimation period has not yet begun]

Month	By months			Cumulative		
	2011	2012	2012 as percent of 2011	2011	2012	2012 as percent of 2011
	(1,000 chicks)	(1,000 chicks)	(percent)	(1,000 chicks)	(1,000 chicks)	(percent)
January	781,313	751,870	96	781,313	751,870	96
February	708,722	705,113	99	1,490,035	1,456,983	98
March	793,765	764,225	96	2,283,800	2,221,208	97
April	777,866	747,697	96	3,061,666	2,968,905	97
May	804,484	777,636	97	3,866,150	3,746,541	97
June	766,371	756,316	99	4,632,521	4,502,857	97
July	768,432	762,749	99	5,400,953	5,265,606	97
August	758,980	758,292	100	6,159,933	6,023,898	98
September	719,606	718,067	100	6,879,539	6,741,965	98
October	715,886	726,908	102	7,595,425	7,468,873	98
November	702,169	693,354	99	8,297,594	8,162,227	98
December	758,382			9,055,976		

Intended Placements of Broiler-Type Pullet Chicks for Hatchery Supply Flocks by Month and Total: 2011-2012

[Blank data cells indicate estimation period has not yet begun]

Month	Pullet chicks hatched		2012 as percent of 2011	Cumulative potential placements relative to current supply flocks 7-15 months earlier ¹	
	2011 (1,000 chicks)	2012 (1,000 chicks)		2012 (1,000 chicks)	2013 (1,000 chicks)
United States placements					
January	6,557	6,673	102	64,111	60,864
February	7,284	7,025	96	63,679	60,646
March	7,058	6,753	96	63,323	61,094
April	7,044	6,524	93	63,209	61,334
May	7,721	7,472	97	62,941	60,926
June	7,211	6,800	94	62,547	60,668
July	6,444	6,071	94	61,927	
August	7,233	7,338	101	61,556	
September	6,657	6,678	100	60,860	
October	6,289	6,265	100	60,402	
November	6,890	6,767	98	60,482	
December	6,438			60,721	
Annual total	82,826				
Total placements ²					
January	8,187	8,201	100		
February	8,931	8,818	99		
March	9,023	8,525	94		
April	8,944	8,232	92		
May	9,612	9,430	98		
June	9,225	8,554	93		
July	8,131	7,447	92		
August	8,700	9,241	106		
September	8,546	8,296	97		
October	7,938	7,812	98		
November	8,489	8,605	101		
December	8,279				
Annual total	104,005				

¹ For November 2012, includes breeder pullet chicks hatched August 2011 through April 2012.

² United States production of intended placements worldwide.

Statistical Methodology

Survey Procedures: Primary data for the *Chickens and Eggs* report are from weekly and/or monthly questionnaires sent to producers. An attempt is made to collect information for layer and egg estimates from each known contractor and independent producer who has at least 30,000 table egg layers, flocks of hatchery supply layers, or pullet only operations with at least 500 pullets. Coverage for operations with less than 30,000 table egg layers are estimated each month based on data reported in December. Approximately 650 contractors, independent egg producers, and pullet only operations are contacted each month. All known hatcheries, approximately 300, are contacted for information on a weekly and/or monthly basis.

Estimating Procedures: Sound statistical methodology is employed to derive estimates from the reported data. All data are analyzed for unusual values. Data from each operation are compared to their own past operating profile and to trends from similar operations. Data for missing operations are estimated based on similar operations or historical data. NASS field offices prepare these estimates by using a combination of survey indications and historic trends. Individual State estimates are reviewed by the Agricultural Statistics Board for reasonableness. Individual hatchery data are summed to State, regional, and United States totals.

For chicken hatcheries, chicks hatched consist of all chicks of domesticated breeds including males and chicks destined for hatchery supply flocks and research purposes. Eggs set are eggs in incubators for the purpose of hatching. The relationship of egg-type chicks hatched to chicken inventory and poultry marketings are carefully monitored. The disposition of egg-type chicks hatched prior to placement into the laying flock can vary significantly, which can make comparisons to changes in layer inventory inconsistent over time. Broiler chicks placed are specifically placed on feed for meat production. Intended placement data reported by leading breeders include pullet chicks expected from eggs sold the preceding month. The breeders in this report account for a large percentage of replacement pullets for hatchery supply flocks. Production of replacement pullets by these breeders indicates the number of pullets available to hatchery supply layer flocks several months before the pullets will actually move into the laying flocks. "Hatchery Supply Flocks" include all generations of layers which could lay eggs to supply a hatchery. This includes the generations of parents, grandparents, great-grandparents, pedigree, etc. Also included are research flocks, vaccine flocks, and specific pathogen-free flocks. The broiler cumulative potential placements are a moving total of the intended placements 7-15 months earlier. The egg-type cumulative potential placements of 7-18 months earlier represent the first laying cycle. Molting and additional laying cycles will increase the cumulative potential placements of egg-type hatching flocks.

Revision Policy: The previous month's estimates are subject to revision if late reports or corrected data indicates a different level. Additionally, revisions after the monthly report will be made at the end of the marketing year and published in the annual reports of *Chickens and Eggs Summary* and *Hatchery Production Summary*. Estimates will also be reviewed for chickens and eggs after data from the 5-year Census of Agriculture are available. No revisions will be made after that date.

Reliability: Estimates are based on a census of all known contractors and independent producers who have at least 30,000 table egg layers, flocks of hatchery supply layers, pullet only operations with at least 500 pullets, or operating hatcheries and therefore, have no sampling error. However, estimates are subject to errors such as omission, duplication, and mistakes in reporting, recording, and processing the data. While these errors cannot be measured directly, they are minimized through strict quality controls in the data collection process and a careful review of all reported data for consistency and reasonableness.

To assist in evaluating the reliability of the estimates in this report, the "Root Mean Square Error" is shown for selected items in the following table. The "Root Mean Square Error" is a statistical measure based on past performance and is computed using the differences between first and final estimates. The "Root Mean Square Error" for all layers over the past 24 months is 0.2 percent. This means that chances are 2 out of 3 that the final estimate will not be above or below the current estimate of 345 million layers by more than 0.2 percent. Chances are 9 out of 10 that the difference will not exceed 0.3 percent.

Reliability of Layer and Egg Estimates

[Based on data for the past twenty-four months]

Item	Root mean square error	90 percent confidence level	Difference between first and latest estimate				
			Average	Smallest	Largest	Months	
						Below latest	Above latest
All layers	(percent) 0.2	(percent) 0.3	(1,000) 374	(1,000) 25	(1,000) 1,904	(number) 16	(number) 8
Eggs	0.2	0.3	(million) 8	(million) 1	(million) 38	17	7

Regional Listing

- North Atlantic:** Connecticut, Maine, Massachusetts, New Hampshire, New Jersey, New York, Pennsylvania, Rhode Island, Vermont.
- East North Central:** Illinois, Indiana, Michigan, Ohio, Wisconsin.
- West North Central:** Iowa, Kansas, Minnesota, Missouri, Nebraska, North Dakota, South Dakota.
- South Atlantic:** Delaware, Florida, Georgia, Maryland, North Carolina, South Carolina, Virginia, West Virginia.
- South Central:** Alabama, Arkansas, Kentucky, Louisiana, Mississippi, Oklahoma, Tennessee, Texas.
- West:** Alaska, Arizona, California, Colorado, Hawaii, Idaho, Montana, New Mexico, Nevada, Oregon, Utah, Washington, Wyoming.

Terms and Definitions of Chickens and Eggs Estimates

All Layers includes both table egg and hatching egg flocks regardless of size.

Intended Placements are reported by leading breeders. Coverage may not be 100 percent. Includes expected pullet chicks from eggs sold during the preceding month at the rate of 125 pullet chicks per case of 30 dozen eggs.

Information Contacts

Listed below are the commodity specialists in the Livestock Branch of the National Agricultural Statistics Service to contact for additional information. E-mail inquiries may be sent to nass@nass.usda.gov

- Dan Kerestes, Chief, Livestock Branch (202) 720-3570
- Bruce Boess, Head, Poultry and Specialty Commodities Section (202) 720-4447
- Cody Brokmeyer – Poultry Slaughter, Turkey Hatchery, Turkeys Raised (202) 690-3237
- David Colwell – Cold Storage (202) 720-8784
- LaKeya Jones – Catfish Processing, Catfish Production, Trout Production,
 Census of Aquaculture, Honey, Mink (202) 720-0585
- Dawn Keen – Egg Products (202) 720-4448
- Kim Linonis – Layers, Eggs (202) 690-8632
- Miste Salmon – Broiler Hatchery, Chicken Hatchery (202) 720-3244

Access to NASS Reports

For your convenience, you may access NASS reports and products the following ways:

- All reports are available electronically, at no cost, on the NASS web site: <http://www.nass.usda.gov>
- Both national and state specific reports are available via a free e-mail subscription. To set-up this free subscription, visit <http://www.nass.usda.gov> and in the “Follow NASS” box under “Receive reports by Email,” click on “National” or “State” to select the reports you would like to receive.

For more information on NASS surveys and reports, call the NASS Agricultural Statistics Hotline at (800) 727-9540, 7:30 a.m. to 4:00 p.m. ET, or e-mail: nass@nass.usda.gov.

The United States Department of Agriculture (USDA) prohibits discrimination in all its programs and activities on the basis of race, color, national origin, age, disability, and where applicable, sex, marital status, familial status, parental status, religion, sexual orientation, political beliefs, genetic information, reprisal, or because all or a part of an individual's income is derived from any public assistance program. (Not all prohibited bases apply to all programs.) Persons with disabilities who require alternative means for communication of program information (Braille, large print, audiotape, etc.) should contact USDA's TARGET Center at (202) 720-2600 (voice and TDD).

To file a complaint of discrimination, write to USDA, Assistant Secretary for Civil Rights, Office of the Assistant Secretary for Civil Rights, 1400 Independence Avenue, S.W., Stop 9410, Washington, DC 20250-9410, or call toll-free at (866) 632-9992 (English) or (800) 877-8339 (TDD) or (866) 377-8642 (English Federal-relay) or (800) 845-6136 (Spanish Federal-relay). USDA is an equal opportunity provider and employer.