

Cold Storage



USDA
Washington, D.C.

Released November 21, 1997, by the National Agricultural Statistics Service (NASS), Agricultural Statistics Board, U.S. Department of Agriculture. For information on "Cold Storage" call John Lange at (202) 720-0585, office hours 7:30 a.m. to 4:00 p.m. ET.

Frozen food stocks in refrigerated warehouses on October 31, 1997, were greater than year earlier levels for concentrated orange juice, meat, turkey, potatoes, and fruit. Cooler stocks of pears and peanuts were higher than a year earlier.

Total red meat supplies in freezers increased 2 percent from September and were up 14 percent from October 1996. Frozen pork stocks were 4 percent above last month and were up 8 percent from last year. Stocks of pork bellies were up 29 percent from last month, but were 11 percent below a year ago.

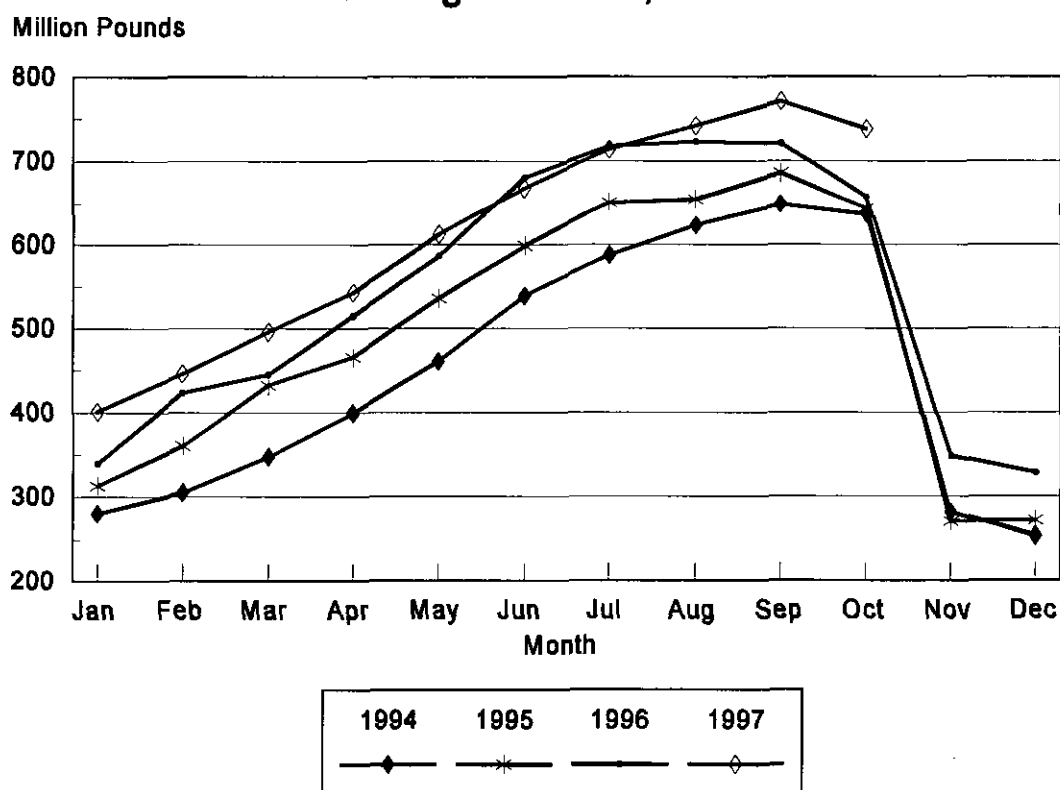
Total frozen poultry supplies decreased 1 percent from last month, but were 6 percent above last year. Total stocks of chicken increased 4 percent during the month, but were 1 percent below 1996. Total pounds of turkey in freezers decreased 4 percent from last month, but were up 12 percent from last year's level.

Public cooler occupancy was at 50 percent of capacity, up 5 points from a year ago. Public freezer occupancy at 70 percent was the same as last month and 3 points above the year earlier level.

Table of Contents

	Page
Stocks in Cold Storage: By Commodity, United States, October 1997	2
Stocks in Cold Storage: By Commodity, Region, and United States, September 30, 1997	6
Stocks in Cold Storage: By Commodity, Region, and United States, October 31, 1997	10
Public General Warehouses: Cold Storage Space Occupied by Region and United States, October 1997	14
Apples in Cold Storage: By State and United States, October 1997	15
Survey and Estimating Procedures, Revision Policy and Reliability	16

Total Frozen Turkeys Cold Storage Stocks, 1994-1997



**Stocks in Cold Storage: By Commodity,
United States, October 1997**

Commodity	Stocks in All Warehouses			Percent of		Public Warehouse Stocks
	Oct 31, 1996	Sep 30, 1997	Oct 31, 1997	Oct 1996	Sep 1997	Oct 31, 1997
	<i>1,000 Pounds</i>	<i>1,000 Pounds</i>	<i>1,000 Pounds</i>	<i>Percent</i>	<i>Percent</i>	<i>1,000 Lbs</i>
Fresh Fruit						
Apples						
Regular Storage	2,145,191	1,070,519	2,142,105	100	200	
Controlled Atmosphere	3,953,994	1,897,798	3,554,909	90	187	
Total	6,099,185	2,968,317	5,697,014	93	192	60,813
Pears						
Bartlett	31,492	118,680	49,781	158	42	
Other Varieties	334,680	497,449	535,640	160	108	
Total	366,172	616,129	585,421	160	95	2,988
Nuts						
Shelled						
Peanuts	134,427	176,153	180,938	135	103	
Pecans	33,520	22,862	18,537	55	81	
Other Shelled	72,930	72,293	75,217	103	104	
Total	240,877	271,308	274,692	114	101	146,677
In-Shell						
Peanuts	9,834	12,079	10,421	106	86	
Pecans	15,886	4,600	8,421	53	183	
Other In-Shell	10,864	8,766	13,313	123	152	
Total	36,584	25,445	32,155	88	126	14,643
Dairy Products						
Butter, Total	20,545	43,936	26,442	129	60	22,827
(Government Owned)	277	499	392	142	79	
Natural Cheese						
American, Total	379,471	421,531	399,285	105	95	
(Government Owned)	176	257	59	34	23	
Swiss	11,987	11,040	11,579	97	105	
Other Natural Cheese	103,169	98,606	77,912	76	79	
Total	494,627	531,177	488,776	99	92	259,801
Eggs, Frozen						
Whites	1,268	1,032	897	71	87	
Yolks	1,503	1,047	1,214	81	116	
Whole & Mixed	7,891	8,237	8,024	102	97	
Unclassified	1,987	587	826	42	141	
Total	12,649	10,903	10,961	87	101	10,501
Frozen Poultry						
Chicken						
Broilers (Whole)	30,479	24,994	24,973	82	100	
Hens	10,403	10,662	8,052	77	76	
Other Chicken	550,576	522,301	549,945	100	105	
Total	591,458	557,957	582,970	99	104	
Turkey						
Whole Turkeys	455,696	530,883	488,865	107	92	
Other Turkey	202,599	240,572	248,658	123	103	
Total	658,295	771,455	737,523	112	96	
Ducks	2,160	2,848	2,462	114	86	
Total	1,251,913	1,332,260	1,322,955	106	99	1,181,180

**Stocks in Cold Storage: By Commodity,
United States, October 1997 (Continued)**

Commodity	Stocks in All Warehouses			Percent of		Public Warehouse Stocks
	Oct 31, 1996	Sep 30, 1997	Oct 31, 1997	Oct 1996	Sep 1997	Oct 31, 1997
	<i>1,000 Pounds</i>	<i>1,000 Pounds</i>	<i>1,000 Pounds</i>	<i>Percent</i>	<i>Percent</i>	<i>1,000 Lbs</i>
Frozen Fruit						
Apples	54,423	52,141	52,685	97	101	
Apricots	10,551	19,857	16,457	156	83	
Blackberries, Total	24,053	35,389	30,375	126	86	
IQF	14,438	18,361	15,591	108	85	
Pails and Tubs	2,999	5,568	4,671	156	84	
Barrels, 400 lbs net	5,453	10,035	8,516	156	85	
Concentrate	1,163	1,425	1,597	137	112	
Blueberries	71,317	115,129	112,343	158	98	
Boysenberries	4,880	7,037	6,160	126	88	
Cherries, Tart (RSP)	146,260	168,169	155,047	106	92	
Cherries, Tart (Juice)	4,552	1,816	2,310	51	127	
Cherries, Sweet	11,951	18,008	19,709	165	109	
Grapes	5,491	2,175	4,365	79	201	
Peaches	59,154	102,473	86,780	147	85	
Raspberries, Black	1,597	1,234	1,103	69	89	
Raspberries, Red, Total	44,150	66,399	58,586	133	88	
IQF	15,534	17,697	15,083	97	85	
Pails and Tubs	14,834	18,087	16,019	108	89	
Barrels, 400 lbs net	12,287	29,565	26,305	214	89	
Concentrate	1,495	1,050	1,179	79	112	
Strawberries, Total	268,579	295,796	282,835	105	96	
Other Frozen Fruit	650,416	167,190	619,864	95	371	
Total	1,357,374	1,052,813	1,448,619	107	138	852,849
Frozen Juice						
Orange Juice Conc. ¹	732,652	1,293,312	1,127,488	154	87	
(Gallon Equivalent)	74,035	130,690	113,934			
Other Juice Concentrate	425,398	459,617	452,266	106	98	
Total	1,158,050	1,752,929	1,579,754	136	90	275,033
Frozen Vegetables						
Asparagus	8,658	9,078	8,444	98	93	
Limas, Fordhook	18,387	22,948	19,585	107	85	
Limas, Baby	62,692	51,864	60,053	96	116	
Green Beans, Reg. Cut	203,538	252,744	243,389	120	96	
Green Beans, Fr. Style	52,374	43,854	39,628	76	90	
Broccoli, Spears	22,778	18,453	17,940	79	97	
Broccoli, Chopped & Cut	105,255	96,491	88,211	84	91	
Brussels Sprouts	12,645	11,124	15,381	122	138	
Carrots, Diced	56,284	28,495	51,176	91	180	
Carrots, Other	180,988	145,140	194,464	107	134	
Cauliflower	48,167	33,520	37,386	78	112	
Corn, Cut	452,386	422,111	466,365	103	110	
Corn, Cob	375,758	298,662	329,818	88	110	
Mixed Vegetables	51,928	53,466	49,772	96	93	
Okra	39,310	59,303	62,313	159	105	
Onion Rings	8,854	9,176	10,285	116	112	
Onions, Other	27,889	26,908	29,246	105	109	
Blackeye Peas	14,172	8,185	10,919	77	133	
Green Peas	277,076	339,749	305,761	110	90	
Peas & Carrots Mixed	7,122	8,467	7,718	108	91	
Spinach	53,273	73,762	75,567	142	102	
Squash, Summer/Zucchini	69,436	75,904	78,626	113	104	
Southern Greens	9,776	13,600	15,629	160	115	
Other Vegetables	338,565	284,624	287,489	85	101	
Total	2,497,311	2,387,628	2,505,165	100	105	1,701,316

See footnotes at end of table.

--continued

**Stocks in Cold Storage: By Commodity,
United States, October 1997 (Continued)**

Commodity	Stocks in All Warehouses			Percent of		Public Warehouse Stocks
	Oct 31, 1996	Sep 30, 1997	Oct 31, 1997	Oct 1996	Sep 1997	Oct 31, 1997
	<i>1,000 Pounds</i>	<i>1,000 Pounds</i>	<i>1,000 Pounds</i>	<i>Percent</i>	<i>Percent</i>	<i>1,000 Lbs</i>
Potatoes						
French Fries	1,030,995	1,043,833	1,124,325	109	108	
Other Frozen	194,228	225,142	231,038	119	103	
Total	1,225,223	1,268,975	1,355,363	111	107	957,935
Meat						
Frozen Beef						
Boneless	266,251	319,614	318,343	120	100	
Beef Cuts	29,692	29,406	33,382	112	114	
Total	295,943	349,020	351,725	119	101	349,449
(Government Owned)	5,386	4,562	4,206	78	92	
Frozen Pork						
Picnics, Bone-in	7,094	11,930	13,786	194	116	
Hams, Total	80,412	101,278	88,724	110	88	80,768
Bone-in	53,844	59,928	50,206	93	84	44,570
Boneless	26,568	41,350	38,518	145	93	36,198
Bellies	16,206	11,154	14,360	89	129	
Loins, Total	13,059	15,316	17,557	134	115	15,678
Bone-in	6,776	6,482	7,664	113	118	
Boneless	6,283	8,834	9,893	157	112	
Ribs	40,654	31,240	39,505	97	126	
Butts	5,403	4,463	6,906	128	155	
Trimmings	30,632	41,099	44,663	146	109	
Other	79,440	72,757	80,349	101	110	
Variety Meats	41,570	45,590	42,754	103	94	
Unclassified	18,877	12,587	12,783	68	102	
Total	333,347	347,414	361,387	108	104	305,997
(Government Owned)	922	649	1,273	138	196	
Other						
Veal	6,774	5,876	6,529	96	111	
Lamb & Mutton	10,494	16,116	16,934	161	105	
Total	17,268	21,992	23,463	136	107	23,171
Canned						
Canned Hams	8,032	8,457	8,768	109	104	
Other Canned Meat	882	1,994	1,073	122	54	
Total	8,914	10,451	9,841	110	94	8,394
Total	655,472	728,877	746,416	114	102	687,011
Miscellaneous						
Cooler	826,093	960,117	961,447	116	100	577,325
Freezer	1,757,538	1,848,590	1,890,648	108	102	1,818,421
Total	2,583,631	2,808,707	2,852,095	110	102	2,395,746
Commodities						
Stored in Coolers	8,073,624	5,388,107	8,053,463	100	149	1,071,402
Stored in Freezers	9,925,989	10,411,297	10,872,365	110	104	7,497,918
Total	17,999,613	15,799,404	18,925,828	105	120	8,569,320

¹ Adjusted to 42.0 degrees Brix equivalent (9.896 pounds per gallon).

**Stocks in Cold Storage: By Commodity, Region,
and United States, September 30, 1997**

Commodity	New England	Middle Atlantic	East North Central	West North Central	South Atlantic
	<i>1,000 Pounds</i>	<i>1,000 Pounds</i>	<i>1,000 Pounds</i>	<i>1,000 Pounds</i>	<i>1,000 Pounds</i>
Total Fresh Apples	4	250,110	15,632	444	90,064
Nuts					
Shelled					
Peanuts		1	455	23	111,486
Pecans ¹		80			6,468
In-Shell					
Pecans ¹		13			1,019
Dairy Products					
Butter, Total	6,727	3,223	19,343	3,699	337
Natural Cheese					
American, Total	22,628	38,302	227,887	66,915	249
Other Natural Cheese	97	14,630	67,621	4,916	5,105
Broilers (Whole)	81	576	812	1,233	8,147
Hens	1	65	171	1,197	5,568
Other Chicken	1,517	5,557	12,083	21,416	137,887
Total	1,599	6,198	13,066	23,846	151,602
Whole Turkeys	15,456	54,831	57,333	74,018	69,809
Other Turkey	589	14,964	27,899	62,262	67,292
Total	16,045	69,795	85,232	136,280	137,101
Ducks	60	184	1,464	128	110
Total	17,704	76,177	99,762	160,254	288,813
Frozen Fruit					
Apples	16	17,074	19,174	204	3,793
Blueberries	20,863	11,355	55,124	788	5,611
Cherries, Tart (RSP)	107	6,777	144,201	189	70
Cherries, Sweet		1,170	9,090	335	178
Peaches	132	2,563	4,562	243	1,181
Raspberries, Red	139	1,236	881	799	307
Strawberries, Total	82	2,963	4,874	5,090	2,473
Other Frozen Fruit	25,107	23,022	56,461	1,179	2,321

See footnotes at end of table.

--continued

**Stocks in Cold Storage: By Commodity, Region,
and United States, September 30, 1997 (continued)**

Commodity	East South Central	West South Central	Mountain	Pacific	US Total
	<i>1,000 Pounds</i>	<i>1,000 Pounds</i>	<i>1,000 Pounds</i>	<i>1,000 Pounds</i>	<i>1,000 Pounds</i>
Total Fresh Apples		24	97	2,611,942	2,968,317
Nuts					
Shelled					
Peanuts	25,865	36,306	108	1,909	176,153
Pecans ¹	367	15,670		277	22,862
In-Shell					
Pecans ¹	1,264	2,296		8	4,600
Dairy Products					
Butter, Total	141	445	284	9,737	43,936
Natural Cheese					
American, Total	259	4,174	16,646	44,471	421,531
Other Natural Cheese	2,552	129	976	2,580	98,606
Broilers (Whole)	739	6,912	215	6,279	24,994
Hens	1,691	151	835	983	10,662
Other Chicken	98,198	205,730	2,148	37,765	522,301
Total	100,628	212,793	3,198	45,027	557,957
Whole Turkeys	11,749	127,177	26,973	93,537	530,883
Other Turkey	517	25,263	3,843	37,943	240,572
Total	12,266	152,440	30,816	131,480	771,455
Ducks	7	84	64	747	2,848
Total	112,901	365,317	34,078	177,254	1,332,260
Frozen Fruit					
Apples	151	956	236	10,537	52,141
Blueberries	247	691	680	19,770	115,129
Cherries, Tart (RSP)	24	308	7,137	9,356	168,169
Cherries, Sweet	177	127	56	6,875	18,008
Peaches	177	1,475	132	92,008	102,473
Raspberries, Red	213	762	53	62,009	66,399
Strawberries, Total	2,136	27,085	3,070	248,023	295,796
Other Frozen Fruit	458	7,469	1,777	49,396	167,190

See footnotes at end of table.

--continued

**Stocks in Cold Storage: By Commodity, Region,
and United States, September 30, 1997 (continued)**

Commodity	New England	Middle Atlantic	East North Central	West North Central	South Atlantic
	<i>1,000 Pounds</i>	<i>1,000 Pounds</i>	<i>1,000 Pounds</i>	<i>1,000 Pounds</i>	<i>1,000 Pounds</i>
Frozen Juice					
Orange Juice Conc. ²	55		2,260	362	1,230,646
Other Juice Concentrate	377	23,296	16,455	1,464	195,039
Frozen Vegetables ³					
Asparagus		182	3,581	461	124
Limas, Fordhook		312	965	299	2,287
Limas, Baby		500	1,553	1,758	6,699
Green Beans, Reg. Cut		33,203	51,042	1,728	8,097
Green Beans, Fr. Style		9,400	5,437	422	386
Broccoli, Spears		1,756	259	477	2,169
Broccoli, Chopped & Cut		4,391	5,295	4,059	5,592
Brussels Sprouts		328	304	532	353
Carrots, Diced		2,116	10,034	1,195	2,525
Carrots, Other		3,492	7,419	1,404	7,581
Cauliflower		974	2,013	636	778
Corn, Cut		23,940	46,342	29,645	15,613
Corn, Cob		19,214	12,376	34,422	4,811
Mixed Vegetables		2,423	3,830	2,204	3,483
Okra		770	238	407	34,393
Onion Rings		679	4,708	1,357	724
Onions, Other		1,401	2,259	721	4,058
Blackeye Peas		143	410	40	6,858
Green Peas		30,865	41,811	24,945	20,544
Peas & Carrots Mixed		656	275	82	641
Spinach		10,840	1,504	1,268	6,031
Squash, Summer/Zucchini		603	25,993	413	13,584
Southern Greens		2,218	27	142	4,598
Other Vegetables		27,227	33,547	14,007	25,739
Potatoes					
French Fries	32,039	21,713	106,720	102,515	15,733
Other Frozen	6,341	16,108	33,570	9,569	2,684
Meat					
Frozen Beef					
Boneless	5,617	33,488	28,814	82,408	35,138
Beef Cuts	4,201	430	2,189	6,171	743
Frozen Pork					
Ribs	209	1,303	12,317	10,298	2,677
Trimmings	301	1,636	6,385	17,315	5,724
Other	69	1,897	18,244	26,514	5,004
Other					
Veal	506	1,081	2,858	605	129
Lamb & Mutton	746	4,922	2,660	1,447	1,544

See footnotes at end of table.

--continued

**Stocks in Cold Storage: By Commodity, Region,
and United States, September 30, 1997 (continued)**

Commodity	East South Central	West South Central	Mountain	Pacific	US Total
	<i>1,000 Pounds</i>	<i>1,000 Pounds</i>	<i>1,000 Pounds</i>	<i>1,000 Pounds</i>	<i>1,000 Pounds</i>
Frozen Juice					
Orange Juice Concentrate	100	4,695	1,932	53,262	1,293,312
Other Juice Concentrate	644	18,679	1,423	202,240	459,617
Frozen Vegetables ³					
Asparagus		325	201	4,204	9,078
Limas, Fordhook		125		18,960	22,948
Limas, Baby		705	8,646	32,003	51,864
Green Beans, Reg. Cut		1,423	663	156,588	252,744
Green Beans, Fr. Style		552	509	27,148	43,854
Broccoli, Spears		6,722	128	6,942	18,453
Broccoli, Chopped & Cut		24,929	1,529	50,696	96,491
Brussels Sprouts		2,035	47	7,525	11,124
Carrots, Diced		402	198	12,025	28,495
Carrots, Other		10,149	400	114,695	145,140
Cauliflower		4,222	886	24,011	33,520
Corn, Cut		1,894	796	303,881	422,111
Corn, Cob		2,105	940	224,794	298,662
Mixed Vegetables		5,818	344	35,364	53,466
Okra		22,916	1	578	59,303
Onion Rings		93	1	1,614	9,176
Onions, Other		1,039	1,898	15,532	26,908
Blackeye Peas		505		229	8,185
Green Peas		1,959	18,645	200,980	339,749
Peas & Carrots Mixed		87	10	6,716	8,467
Spinach		5,406	355	48,358	73,762
Squash, Summer/Zucchini		8,391	291	26,629	75,904
Southern Greens		5,657	1	957	13,600
Other Vegetables		35,896	4,999	143,209	284,624
Potatoes					
French Fries	3,590	1,541	286,980	473,002	1,043,833
Other Frozen	876	4,134	54,135	97,725	225,142
Meat					
Frozen Beef					
Boneless	4,992	67,633	2,926	58,598	319,614
Beef Cuts	1,102	5,457	3,807	5,306	29,406
Frozen Pork					
Ribs	1,517	2,034	4	881	31,240
Trimming	646	7,760	95	1,237	41,099
Other	5,500	11,084	233	4,212	72,757
Other					
Veal		106		591	5,876
Lamb & Mutton	1	332	1,422	3,042	16,116

¹ East North Central combined with South Atlantic. Mountain and West North Central combined with West South Central.

² Middle Atlantic combined with South Atlantic.

³ New England combined with Middle Atlantic. East South Central combined with South Atlantic.

**Stocks in Cold Storage: By Commodity, Region,
and United States, October 31, 1997**

Commodity	New England	Middle Atlantic	East North Central	West North Central	South Atlantic
	<i>1,000 Pounds</i>	<i>1,000 Pounds</i>	<i>1,000 Pounds</i>	<i>1,000 Pounds</i>	<i>1,000 Pounds</i>
Total Fresh Apples	110,463	663,266	488,576	10,050	372,904
Nuts					
Shelled					
Peanuts		1	658	23	103,588
Pecans ¹		59			4,555
In-Shell					
Pecans ¹		24			4,227
Dairy Products					
Butter, Total	3,012	1,966	11,612	2,828	103
Natural Cheese					
American, Total	21,854	38,915	216,455	60,163	263
Other Natural Cheese	145	11,277	53,290	3,696	3,934
Broilers (Whole)	69	664	1,054	1,154	9,510
Hens		21	698	841	3,278
Other Chicken	1,426	4,557	11,000	23,112	146,008
Total	1,495	5,242	12,752	25,107	158,796
Whole Turkeys	14,999	44,339	54,512	73,293	60,192
Other Turkey	757	15,672	28,380	62,646	71,898
Total	15,756	60,011	82,892	135,939	132,090
Ducks	52	103	1,412	102	96
Total	17,303	65,356	97,056	161,148	290,982
Frozen Fruit					
Apples	9	16,168	19,121	195	3,035
Blueberries	19,462	10,329	60,285	682	4,395
Cherries, Tart (RSP)	102	4,113	133,493	158	94
Cherries, Sweet		3,057	9,374	324	256
Peaches	113	3,509	2,675	840	1,165
Raspberries, Red	171	1,231	934	882	247
Strawberries, Total	80	2,997	5,313	5,402	2,692
Other Frozen Fruit	162,377	58,061	279,369	2,335	6,899

See footnotes at end of table.

--continued

**Stocks in Cold Storage: By Commodity, Region,
and United States, October 31, 1997 (continued)**

Commodity	East South Central	West South Central	Mountain	Pacific	US Total
	<i>1,000 Pounds</i>	<i>1,000 Pounds</i>	<i>1,000 Pounds</i>	<i>1,000 Pounds</i>	<i>1,000 Pounds</i>
Total Fresh Apples	133	1,365	114,548	3,935,709	5,697,014
Nuts					
Shelled					
Peanuts	24,214	49,915	115	2,424	180,938
Pecans ¹	124	13,571		228	18,537
In-Shell					
Pecans ¹	183	3,979		8	8,421
Dairy Products					
Butter, Total	59	1,113	373	5,376	26,442
Natural Cheese					
American, Total	200	1,075	15,969	44,391	399,285
Other Natural Cheese	1,973	67	771	2,759	77,912
Broilers (Whole)	696	6,699	158	4,969	24,973
Hens	1,846	120	302	946	8,052
Other Chicken	104,884	220,774	2,069	36,115	549,945
Total	107,426	227,593	2,529	42,030	582,970
Whole Turkeys	11,350	115,523	27,827	86,830	488,865
Other Turkey	943	26,473	4,246	37,643	248,658
Total	12,293	141,996	32,073	124,473	737,523
Ducks	6	105	61	525	2,462
Total	119,725	369,694	34,663	167,028	1,322,955
Frozen Fruit					
Apples	201	1,375	282	12,299	52,685
Blueberries	266	733	646	15,545	112,343
Cherries, Tart (RSP)	35	583	8,639	7,830	155,047
Cherries, Sweet	180	110	55	6,353	19,709
Peaches	129	1,093	103	77,153	86,780
Raspberries, Red	111	785	52	54,173	58,586
Strawberries, Total	2,194	25,170	3,004	235,983	282,835
Other Frozen Fruit	384	8,683	1,705	100,051	619,864

See footnotes at end of table.

--continued

**Stocks in Cold Storage: By Commodity, Region,
and United States, October 31, 1997 (continued)**

Commodity	New England	Middle Atlantic	East North Central	West North Central	South Atlantic
	<i>1,000 Pounds</i>	<i>1,000 Pounds</i>	<i>1,000 Pounds</i>	<i>1,000 Pounds</i>	<i>1,000 Pounds</i>
Frozen Juice					
Orange Juice Conc. ²	61		1,885	444	1,074,654
Other Juice Concentrate	1,179	26,791	15,261	1,415	189,226
Frozen Vegetables ³					
Asparagus		369	3,266	426	262
Limas, Fordhook		286	875	326	1,955
Limas, Baby		1,572	1,941	2,197	12,747
Green Beans, Reg. Cut		35,765	52,182	1,642	6,939
Green Beans, Fr. Style		8,775	5,601	373	447
Broccoli, Spears		1,527	236	453	2,092
Broccoli, Chopped & Cut		4,663	4,900	2,957	7,551
Brussels Sprouts		338	368	523	369
Carrots, Diced		3,264	15,671	1,145	2,514
Carrots, Other		5,143	9,793	1,870	9,096
Cauliflower		1,641	2,026	614	871
Corn, Cut		33,322	48,171	32,740	14,857
Corn, Cob		24,421	13,585	36,417	5,266
Mixed Vegetables		2,399	3,914	2,027	3,292
Okra		801	285	412	38,112
Onion Rings		759	5,215	1,680	650
Onions, Other		1,351	2,658	511	4,403
Blackeye Peas		289	320	29	8,987
Green Peas		26,699	35,342	23,708	19,919
Peas & Carrots Mixed		448	337	124	573
Spinach		15,291	1,570	1,262	6,425
Squash, Summer/Zucchini		1,854	28,507	380	13,407
Southern Greens		2,233	23	140	5,076
Other Vegetables		28,578	31,901	14,127	29,077
Potatoes					
French Fries	36,401	23,589	117,041	100,347	18,139
Other Frozen	6,769	16,298	34,851	10,217	3,043
Meat					
Frozen Beef					
Boneless	7,070	32,276	29,127	86,412	34,224
Beef Cuts	4,088	1,467	3,330	7,185	712
Frozen Pork					
Ribs	266	1,169	14,949	15,050	3,368
Trimmings	276	889	7,653	19,078	6,945
Other	283	1,936	20,385	26,875	4,917
Other					
Veal	528	1,161	3,151	650	116
Lamb & Mutton	704	4,416	2,682	1,415	1,537

See footnotes at end of table.

--continued

**Stocks in Cold Storage: By Commodity, Region,
and United States, October 31, 1997 (continued)**

Commodity	East South Central	West South Central	Mountain	Pacific	US Total
	<i>1,000 Pounds</i>	<i>1,000 Pounds</i>	<i>1,000 Pounds</i>	<i>1,000 Pounds</i>	<i>1,000 Pounds</i>
Frozen Juice					
Orange Juice Concentrate	97	3,849	1,618	44,880	1,127,488
Other Juice Concentrate	610	27,919	1,188	188,677	452,266
Frozen Vegetables ³					
Asparagus		276	185	3,660	8,444
Limas, Fordhook		106		16,037	19,585
Limas, Baby		788	8,658	32,150	60,053
Green Beans, Reg. Cut		1,481	562	144,818	243,389
Green Beans, Fr. Style		366	516	23,550	39,628
Broccoli, Spears		7,206	68	6,358	17,940
Broccoli, Chopped & Cut		25,168	1,289	41,683	88,211
Brussels Sprouts		2,199	52	11,532	15,381
Carrots, Diced		474	301	27,807	51,176
Carrots, Other		11,267	685	156,610	194,464
Cauliflower		2,111	966	29,157	37,386
Corn, Cut		2,808	1,539	332,928	466,365
Corn, Cob		2,317	2,764	245,048	329,818
Mixed Vegetables		4,102	270	33,768	49,772
Okra		22,077	2	624	62,313
Onion Rings		289	4	1,688	10,285
Onions, Other		879	2,089	17,355	29,246
Blackeye Peas		993		301	10,919
Green Peas		1,788	18,222	180,083	305,761
Peas & Carrots Mixed		73	6	6,157	7,718
Spinach		6,185	212	44,622	75,567
Squash, Summer/Zucchini		7,362	327	26,789	78,626
Southern Greens		7,420		737	15,629
Other Vegetables		40,105	5,205	138,496	287,489
Potatoes					
French Fries	3,501	2,420	302,426	520,461	1,124,325
Other Frozen	625	3,344	56,125	99,766	231,038
Meat					
Frozen Beef					
Boneless	2,223	66,864	3,643	56,504	318,343
Beef Cuts	1,209	5,946	3,947	5,498	33,382
Frozen Pork					
Ribs	1,762	2,146	6	789	39,505
Trimmings	661	7,338	50	1,773	44,663
Other	6,739	15,131	296	3,787	80,349
Other					
Veal		193		730	6,529
Lamb & Mutton	1	2,327	1,361	2,491	16,934

¹ East North Central combined with South Atlantic. Mountain and West North Central Combined with West South Central.

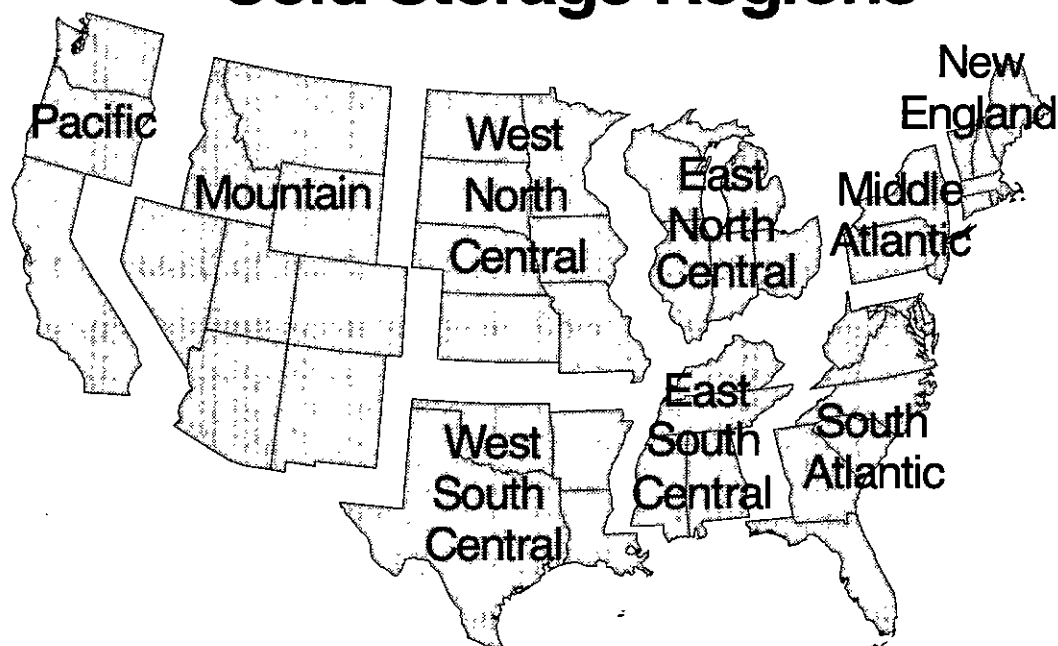
² Middle Atlantic combined with South Atlantic.

³ New England combined with Middle Atlantic. East South Central combined with South Atlantic.

**Public General Warehouses: Cold Storage Space Occupied
by Region and United States, October 1997**

Region	Cooler				Freezer			
	Usable Space	Usable Space Occupied			Usable Space	Usable Space Occupied		
		Oct 31 1997	Oct 31 1996	Sep 30 1997		Oct 31 1997	Oct 31 1996	Sep 30 1997
	<i>1,000 Cu Ft</i>	<i>Percent</i>	<i>Percent</i>	<i>Percent</i>	<i>1,000 Cu Ft</i>	<i>Percent</i>	<i>Percent</i>	<i>Percent</i>
New England	2,415	50	56	52	20,250	41	64	66
Middle Atlantic	34,506	56	66	70	85,254	75	82	83
E. North Central	40,542	54	58	60	171,353	64	63	65
W. North Central	43,595	47	44	47	145,917	53	58	59
South Atlantic	42,457	39	50	48	128,274	61	64	65
E. South Central	9,518	35	50	52	34,835	66	68	68
W. South Central	17,815	23	38	38	114,729	68	68	70
Mountain	5,894	58	52	56	45,705	75	73	73
Pacific	44,979	40	34	35	244,046	78	81	80
US	241,721	45	49	50	990,363	67	70	70

Cold Storage Regions



**Apples in Cold Storage: By State
and United States, October 1997**

State	All Warehouses	
	Oct 31, 1996	Oct 31, 1997
	<i>1,000 Pounds</i>	<i>1,000 Pounds</i>
CA	229,522	261,568
MI	334,000	444,738
N ENG	102,960	110,463
NY	331,422	372,708
OH	19,670	24,050
OR	99,403	54,539
PA	263,592	288,540
VA	185,245	190,945
WA	4,155,763	3,619,602
WV	87,853	78,602
Other States	289,755	251,259
US	6,099,185	5,697,014

Survey Procedures: Questionnaires are mailed about the 24th of each month to all operators on the list of approximately 1,400 public and private cold storage warehouses. In addition, apple data are obtained from special surveys and other sources (State Departments of Agriculture, U.S. Apple Association, etc.). All survey data represent stocks as of the end of the month.

Data are collected from warehouses artificially cooled to a temperature of 50 degrees Fahrenheit or lower, and whose food products are normally stored for 30 days or more. All food items in these facilities are reported regardless of the number of days stored at the time of the report. Also included are specialized storage facilities meeting the 30 day requirement, such as fruit houses, dairy manufacturing plants, frozen fruit, fruit juice, and vegetable processors, and poultry and meat packing plants. Excluded are stocks in space maintained by wholesalers, jobbers, distributors, chain stores, locker plants containing individual lockers, meat packer branch houses, and frozen food processors whose entire inventories are turned over more than once a month.

Estimating Procedures: Data for reporting firms are added to estimates for non-reporting firms to obtain regional and National totals. Estimates for non-reporting firms are obtained by multiplying the previous month's figure by a percent change from the previous month. The percent change is calculated for each item from totals of the current and previous month summed from firms that reported both months.

Revision Policy: Data are revised the following month based on late reports or corrected data. Final figures are published in the annual summary in February of the following year.

Reliability: Reports are received from 900 firms each month which represent about 70 percent of the total capacity. Firms that are not on the list or firms who have never reported are not represented in the data. Monthly data can vary due to different firms reporting month to month. Survey data are also subject to non-sampling errors such as omissions and mistakes in reporting and in processing the data. While these errors cannot be measured directly, they are minimized by carefully reviewing all reported data for consistency and reasonableness.

The next "Cold Storage" report will be released at 3 p.m. ET on December 19, 1997. The United States Department of Agriculture (USDA) prohibits discrimination in its programs on the basis of race, color, national origin, sex, religion, age, disability, political beliefs, and marital or familial status. Persons with disabilities who require alternative means for communication of program information (braille, large print, audiotape, etc.) should contact the USDA's TARGET Center at 202-720-2600 (voice and TDD).

To file a complaint, write the Secretary of Agriculture, USDA, Washington, D.C., 20250, or call 1-800-245-6340 (voice) or 202-720-1127 (TDD). USDA is an equal employment opportunity employer.

ACCESS TO REPORTS!!

For your convenience, there are several ways to obtain NASS reports, data products, and services:

INTERNET ACCESS

All NASS reports are available free of charge on the worldwide Internet. For access, connect to the Internet and go to the NASS Home Page at: <http://www.usda.gov/nass/>. Select "Today's Reports" or Publications and then Reports by Calendar or Publications and then Search, by Title or Subject.

E-MAIL SUBSCRIPTION

All NASS reports are available by subscription free of charge direct to your e-mail address. Send an e-mail message to: usda-reports@usda.mannlib.cornell.edu. In the body of the message type the word: **list**.

AUTOFAX ACCESS

NASSFax service is available for some reports from your fax machine. Please call 202-720-2000, using the handset attached to your fax. Respond to the voice prompts. Document 0411 is a list of available reports.

PRINTED REPORTS OR DATA PRODUCTS

CALL OUR TOLL-FREE ORDER DESK: 800-999-6779 (U.S. and Canada)
Other areas, please call 703-834-0125 FAX: 703-834-0110
(Visa, MasterCard, check, or money order acceptable for payment.)

ASSISTANCE

For **assistance** with general agricultural statistics or further information about NASS or its products or services, contact the **Agricultural Statistics Hotline** at **800-727-9540**, 7:30 a.m. to 4:00 p.m. ET, or e-mail: nass@nass.usda.gov.

USDA Announces Agricultural Outlook Forum '98

February 23 and 24, 1998

Washington, D.C.

Presented by the U.S. Department of Agriculture

Survey the New Frontiers.

Survey the frontiers of agriculture at USDA's seventy-fourth outlook forum. Catch the latest commodity prospects for 1998 and beyond and receive new long-term projections to the year 2007. Hear noted experts and farm leaders tackle front line issues: managing risk, selling bio-engineered products, ensuring food safety, marketing organic foods, honing export strategies, and more.

Act Now To Attend. For program and registration details check the Forum home page, call (202) 720-3050, or dial (202) 694-5700 from your fax machine handset and retrieve document 66666. Call (202) 401-9421 to register.

Ag Forum home page: <http://www.usda.gov/oce/waob/agforum.htm>

e-mail: agforum@oce.usda.gov

Agricultural Outlook Forum '98

—

—

—

—

—

—

—

—

—

—

—

—

—

—