

Cold Storage



USDA
Washington, D.C.

Released December 19, 1997, by the National Agricultural Statistics Service (NASS), Agricultural Statistics Board, U.S. Department of Agriculture. For information on "Cold Storage" call John Lange at (202) 720-0585, office hours 7:30 a.m. to 4:00 p.m. ET.

Frozen food stocks in refrigerated warehouses on November 30, 1997, were greater than year earlier levels for concentrated orange juice, meat, potatoes, poultry, fruit, and vegetables. Cooler stocks of pears and peanuts were higher than a year earlier.

Total red meat supplies in freezers increased slightly from October and were up 18 percent from November 1996. Frozen pork stocks were 6 percent below last month, but were up 5 percent from last year. Stocks of pork bellies were up 76 percent from last month, but were 18 percent below a year ago.

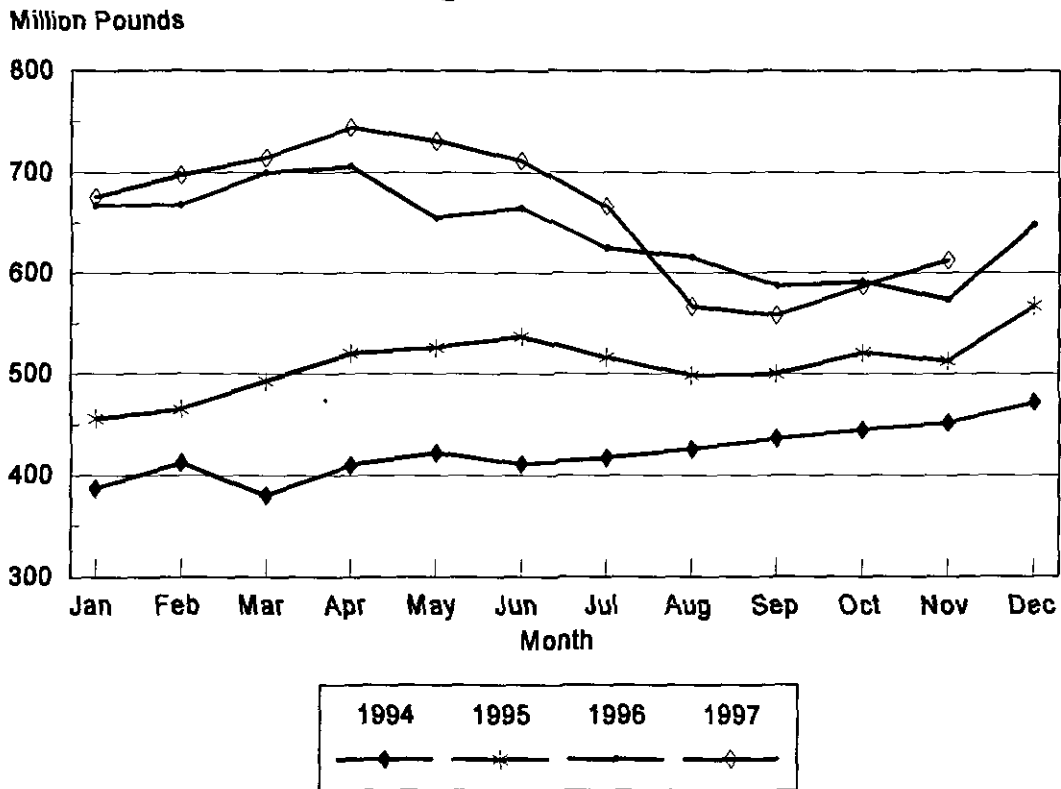
Total frozen poultry supplies decreased 21 percent from last month, but were 13 percent above last year. Total stocks of chicken increased 4 percent during the month and were 7 percent above 1996. Total pounds of turkey in freezers decreased 41 percent from last month, but were up 24 percent from last year's level.

Public cooler occupancy was at 50 percent of capacity, up 4 points from a year ago. Public freezer occupancy at 70 percent was down 1 point from last month, but 6 points above the year earlier level.

Table of Contents

	Page
Stocks in Cold Storage: By Commodity, United States, November 1997	2
Stocks in Cold Storage: By Commodity, Region, and United States, October 31, 1997	6
Stocks in Cold Storage: By Commodity, Region, and United States, November 30, 1997	10
Public General Warehouses: Cold Storage Space Occupied by Region and United States, November 1997	14
Apples in Cold Storage: By State and United States, November 1997	15
Survey and Estimating Procedures, Revision Policy and Reliability	16

Total Frozen Chicken Cold Storage Stocks, 1994-1997



**Stocks in Cold Storage: By Commodity,
United States, November 1997**

Commodity	Stocks in All Warehouses			Percent of		Public Warehouse Stocks
	Nov 30, 1996	Oct 31, 1997	Nov 30, 1997	Nov 1996	Oct 1997	Nov 30, 1997
	<i>1,000 Pounds</i>	<i>1,000 Pounds</i>	<i>1,000 Pounds</i>	<i>Percent</i>	<i>Percent</i>	<i>1,000 Lbs</i>
Fresh Fruit						
Apples						
Regular Storage	1,495,718	2,146,263	1,543,929	103	72	
Controlled Atmosphere	3,911,336	3,554,778	3,627,522	93	102	
Total	5,407,054	5,701,041	5,171,451	96	91	59,515
Pears						
Bartlett	5,996	49,781	9,593	160	19	
Other Varieties	275,338	535,627	443,811	161	83	
Total	281,334	585,408	453,404	161	77	1,466
Nuts						
Shelled						
Peanuts	182,299	181,767	223,252	122	123	
Pecans	30,019	16,502	15,101	50	92	
Other Shelled	85,970	75,080	88,596	103	118	
Total	298,288	273,349	326,949	110	120	150,719
In-Shell						
Peanuts	22,079	10,421	10,725	49	103	
Pecans	27,291	9,521	36,601	134	384	
Other In-Shell	9,903	13,383	10,251	104	77	
Total	59,273	33,325	57,577	97	173	17,988
Dairy Products						
Butter, Total	17,628	26,581	15,171	86	57	12,372
(Government Owned)	227	392	302	133	77	
Natural Cheese						
American, Total	369,743	399,520	384,973	104	96	
(Government Owned)	113	61	150	133	246	
Swiss	13,344	11,630	12,167	91	105	
Other Natural Cheese	97,186	78,542	53,455	55	68	
Total	480,273	489,692	450,595	94	92	233,551
Eggs, Frozen						
Whites	1,139	899	936	82	104	
Yolks	1,110	1,214	960	86	79	
Whole & Mixed	6,343	7,977	7,599	120	95	
Unclassified	1,759	825	703	40	85	
Total	10,351	10,915	10,198	99	93	9,914
Frozen Poultry						
Chicken						
Broilers (Whole)	26,309	25,009	28,592	109	114	
Hens	7,741	8,052	5,906	76	73	
Other Chicken	540,310	554,243	578,008	107	104	
Total	574,360	587,304	612,506	107	104	
Turkey						
Whole Turkeys	167,083	490,653	198,493	119	40	
Other Turkey	180,688	245,988	233,086	129	95	
Total	347,771	736,641	431,579	124	59	
Ducks	1,866	2,461	1,961	105	80	
Total	923,997	1,326,406	1,046,046	113	79	922,178

**Stocks in Cold Storage: By Commodity,
United States, November 1997 (Continued)**

Commodity	Stocks in All Warehouses			Percent of		Public Warehouse Stocks
	Nov 30, 1996	Oct 31, 1997	Nov 30, 1997	Nov 1996	Oct 1997	Nov 30, 1997
	<i>1,000 Pounds</i>	<i>1,000 Pounds</i>	<i>1,000 Pounds</i>	<i>Percent</i>	<i>Percent</i>	<i>1,000 Lbs</i>
Frozen Fruit						
Apples	63,138	52,631	53,064	84	101	
Apricots	9,465	16,458	16,222	171	99	
Blackberries, Total	22,441	30,375	28,366	126	93	
IQF	13,508	15,591	14,855	110	95	
Pails and Tubs	3,061	4,671	3,771	123	81	
Barrels, 400 lbs net	4,763	8,516	8,226	173	97	
Concentrate	1,109	1,597	1,514	137	95	
Blueberries	66,381	102,497	96,419	145	94	
Boysenberries	4,303	6,169	6,060	141	98	
Cherries, Tart (RSP)	137,226	154,891	148,267	108	96	
Cherries, Tart (Juice)	3,952	2,286	1,834	46	80	
Cherries, Sweet	13,212	19,394	15,359	116	79	
Grapes	5,253	4,365	3,757	72	86	
Peaches	54,796	86,858	81,337	148	94	
Raspberries, Black	1,493	1,103	873	58	79	
Raspberries, Red, Total	40,850	57,723	53,632	131	93	
IQF	14,327	14,501	12,539	88	86	
Pails and Tubs	14,111	15,948	16,739	119	105	
Barrels, 400 lbs net	11,223	26,095	23,048	205	88	
Concentrate	1,189	1,179	1,306	110	111	
Strawberries, Total	240,965	282,728	251,863	105	89	
Pkgs. 20 Oz. & Less	94,940		108,049	114		
Pkgs. Over 20 Oz.	146,025		143,814	98		
Other Frozen Fruit	547,603	622,412	594,494	109	96	
Total	1,211,078	1,439,890	1,351,547	112	94	803,474
Frozen Juice						
Orange Juice Conc. ¹	690,976	1,140,877	1,209,275	175	106	
(Gallon Equivalent)	69,824	115,287	122,198			
Other Juice Concentrate	412,932	465,891	419,945	102	90	
Total	1,103,908	1,606,768	1,629,220	148	101	253,679
Frozen Vegetables						
Asparagus	8,431	8,442	7,932	94	94	
Limas, Fordhook	17,278	19,601	18,251	106	93	
Limas, Baby	55,442	59,988	70,273	127	117	
Green Beans, Reg. Cut	181,385	243,742	217,993	120	89	
Green Beans, Fr. Style	45,996	39,755	37,808	82	95	
Broccoli, Spears	20,148	17,941	17,768	88	99	
Broccoli, Chopped & Cut	92,263	88,102	93,903	102	107	
Brussels Sprouts	16,233	15,381	17,486	108	114	
Carrots, Diced	95,333	51,223	84,098	88	164	
Carrots, Other	202,165	194,528	243,772	121	125	
Cauliflower	47,354	37,307	47,056	99	126	
Corn, Cut	386,691	468,974	433,238	112	92	
Corn, Cob	349,040	329,969	309,394	89	94	
Mixed Vegetables	56,384	49,672	49,407	88	99	
Okra	34,873	62,294	58,562	168	94	
Onion Rings	10,525	10,285	10,806	103	105	
Onions, Other	32,261	29,831	30,620	95	103	
Blackeye Peas	11,550	10,920	12,085	105	111	
Green Peas	243,530	306,008	236,267	97	77	
Peas & Carrots Mixed	8,230	7,717	6,823	83	88	
Spinach	49,277	75,554	75,516	153	100	
Squash, Summer/Zucchini	64,026	78,625	79,084	124	101	
Southern Greens	19,239	15,629	18,665	97	119	
Other Vegetables	340,387	287,770	304,286	89	106	
Total	2,388,041	2,509,258	2,481,093	104	99	1,685,947

See footnotes at end of table.

--continued

**Stocks in Cold Storage: By Commodity,
United States, November 1997 (Continued)**

Commodity	Stocks in All Warehouses			Percent of		Public Warehouse Stocks
	Nov 30, 1996	Oct 31, 1997	Nov 30, 1997	Nov 1996	Oct 1997	Nov 30, 1997
	1,000 Pounds	1,000 Pounds	1,000 Pounds	Percent	Percent	1,000 Lbs
Potatoes						
French Fries	962,240	1,123,806	1,098,752	114	98	
Other Frozen	184,054	231,014	219,196	119	95	
Total	1,146,294	1,354,820	1,317,948	115	97	933,252
Meat						
Frozen Beef						
Boneless	259,539	318,174	347,292	134	109	
Beef Cuts	28,484	33,382	31,207	110	93	
Total	288,023	351,556	378,499	131	108	376,230
(Government Owned)	5,544	4,208	3,513	63	83	
Frozen Pork						
Picnics, Bone-in	5,257	13,786	10,940	208	79	
Hams, Total	48,745	88,789	61,345	126	69	56,950
Bone-in	32,918	50,207	32,273	98	64	29,972
Boneless	15,827	38,582	29,072	184	75	26,978
Bellies	30,943	14,408	25,405	82	176	
Loins, Total	16,863	17,608	23,068	137	131	20,673
Bone-in	9,199	7,738	12,775	139	165	
Boneless	7,664	9,870	10,293	134	104	
Ribs	54,980	39,370	47,820	87	121	
Butts	4,977	6,906	7,829	157	113	
Trimming	31,265	37,950	41,112	131	108	
Other	76,818	80,229	73,591	96	92	
Variety Meats	30,560	42,413	30,435	100	72	
Unclassified	15,979	12,776	11,944	75	93	
Total	316,387	354,235	333,489	105	94	291,567
(Government Owned)	1,026	1,216	1,030	100	85	
Other						
Veal	6,528	6,532	6,587	101	101	
Lamb & Mutton	9,788	16,894	16,542	169	98	
Total	16,316	23,426	23,129	142	99	22,859
Canned						
Canned Hams	5,524	8,768	4,879	88	56	
Other Canned Meat	882	1,073	765	87	71	
Total	6,406	9,841	5,644	88	57	4,699
Total	627,132	739,058	740,761	118	100	695,355
Miscellaneous						
Cooler	735,542	959,989	814,007	111	85	533,762
Freezer	1,689,778	1,886,523	1,857,480	110	98	1,799,626
Total	2,425,320	2,846,512	2,671,487	110	94	2,333,388
Commodities						
Stored in Coolers	7,269,521	8,053,590	7,282,779	100	90	1,004,490
Stored in Freezers	9,110,450	10,889,433	10,440,668	115	96	7,108,308
Total	16,379,971	18,943,023	17,723,447	108	94	8,112,798

¹ Adjusted to 42.0 degrees Brix equivalent (9.896 pounds per gallon).

**Stocks in Cold Storage: By Commodity, Region,
and United States, October 31, 1997**

Commodity	New England	Middle Atlantic	East North Central	West North Central	South Atlantic
	<i>1,000 Pounds</i>	<i>1,000 Pounds</i>	<i>1,000 Pounds</i>	<i>1,000 Pounds</i>	<i>1,000 Pounds</i>
Total Fresh Apples	110,463	667,340	488,576	10,050	372,904
Nuts					
Shelled					
Peanuts		14	658	23	105,358
Pecans ¹		59			4,284
In-Shell					
Pecans ¹		24			5,327
Dairy Products					
Butter, Total	3,012	1,966	11,612	2,828	103
Natural Cheese					
American, Total	21,854	39,131	217,362	59,272	263
Other Natural Cheese	145	11,269	53,618	3,980	3,934
Broilers (Whole)	69	664	1,054	1,154	9,510
Hens		21	698	841	3,278
Other Chicken	1,426	4,569	11,000	23,112	146,008
Total	1,495	5,254	12,752	25,107	158,796
Whole Turkeys	14,999	44,445	54,512	73,293	61,110
Other Turkey	757	15,672	28,380	62,646	69,286
Total	15,756	60,117	82,892	135,939	130,396
Ducks	52	103	1,412	102	96
Total	17,303	65,474	97,056	161,148	289,288
Frozen Fruit					
Apples	9	16,114	19,121	197	3,035
Blueberries	18,549	10,329	51,375	684	4,395
Cherries, Tart (RSP)	102	4,025	133,493	158	94
Cherries, Sweet		3,077	9,374	324	256
Peaches	113	3,510	2,675	840	1,165
Raspberries, Red	171	1,229	934	882	247
Strawberries, Total	80	3,030	5,313	5,470	2,692
Other Frozen Fruit	162,377	57,854	279,369	2,313	6,899

See footnotes at end of table.

-continued

**Stocks in Cold Storage: By Commodity, Region,
and United States, October 31, 1997 (continued)**

Commodity	East South Central	West South Central	Mountain	Pacific	US Total
	<i>1,000 Pounds</i>	<i>1,000 Pounds</i>	<i>1,000 Pounds</i>	<i>1,000 Pounds</i>	<i>1,000 Pounds</i>
Total Fresh Apples	133	1,318	114,548	3,935,709	5,701,041
Nuts					
Shelled					
Peanuts	24,214	49,915	115	1,470	181,767
Pecans ¹	124	11,807		228	16,502
In-Shell					
Pecans ¹	183	3,979		8	9,521
Dairy Products					
Butter, Total	59	1,113	374	5,514	26,581
Natural Cheese					
American, Total	200	1,076	15,971	44,391	399,520
Other Natural Cheese	1,973	67	798	2,758	78,542
Broilers (Whole)	696	6,699	194	4,969	25,009
Hens	1,846	120	302	946	8,052
Other Chicken	106,146	220,774	2,050	39,158	554,243
Total	108,688	227,593	2,546	45,073	587,304
Whole Turkeys	11,346	115,524	28,062	87,362	490,653
Other Turkey	918	26,473	4,246	37,610	245,988
Total	12,264	141,997	32,308	124,972	736,641
Ducks	6	105	60	525	2,461
Total	120,958	369,695	34,914	170,570	1,326,406
Frozen Fruit					
Apples	201	1,374	282	12,298	52,631
Blueberries	266	733	662	15,504	102,497
Cherries, Tart (RSP)	35	583	8,572	7,829	154,891
Cherries, Sweet	180	110	55	6,018	19,394
Peaches	129	1,170	103	77,153	86,858
Raspberries, Red	111	786	42	53,321	57,723
Strawberries, Total	2,157	25,169	3,000	235,817	282,728
Other Frozen Fruit	384	8,683	1,705	102,828	622,412

See footnotes at end of table.

-continued

**Stocks in Cold Storage: By Commodity, Region,
and United States, October 31, 1997 (continued)**

Commodity	New England	Middle Atlantic	East North Central	West North Central	South Atlantic
	<i>1,000 Pounds</i>	<i>1,000 Pounds</i>	<i>1,000 Pounds</i>	<i>1,000 Pounds</i>	<i>1,000 Pounds</i>
Frozen Juice					
Orange Juice Conc. ²	61		1,885	444	1,088,213
Other Juice Concentrate	1,179	27,069	15,261	1,415	202,489
Frozen Vegetables ³					
Asparagus		369	3,266	425	262
Limas, Fordhook		287	875	326	1,970
Limas, Baby		1,572	1,941	2,199	12,747
Green Beans, Reg. Cut		36,125	52,182	1,642	6,939
Green Beans, Fr. Style		8,896	5,601	372	447
Broccoli, Spears		1,527	236	454	2,092
Broccoli, Chopped & Cut		4,569	4,900	2,964	7,551
Brussels Sprouts		338	368	523	369
Carrots, Diced		3,517	15,671	1,146	2,309
Carrots, Other		7,803	9,793	1,872	8,968
Cauliflower		1,641	2,026	613	871
Corn, Cut		34,662	48,171	32,735	14,857
Corn, Cob		24,573	13,585	36,420	5,266
Mixed Vegetables		2,399	3,914	2,033	3,275
Okra		801	285	412	38,093
Onion Rings		759	5,215	1,680	650
Onions, Other		1,351	2,658	512	3,976
Blackeye Peas		289	320	29	8,987
Green Peas		26,974	35,342	23,702	19,962
Peas & Carrots Mixed		448	337	123	573
Spinach		15,290	1,570	1,257	6,422
Squash, Summer/Zucchini		1,854	28,507	380	13,406
Southern Greens		2,233	23	140	5,076
Other Vegetables		28,771	31,901	14,131	29,087
Potatoes					
French Fries	36,401	23,643	117,041	100,229	18,139
Other Frozen	6,769	16,298	34,851	11,163	3,043
Meat					
Frozen Beef					
Boneless	7,070	32,271	29,127	86,412	34,224
Beef Cuts	4,088	1,467	3,330	7,185	712
Frozen Pork					
Ribs	266	1,167	14,949	15,050	3,240
Trimmings	276	889	7,653	19,078	6,283
Other	283	1,934	20,385	26,875	4,809
Other					
Veal	528	1,164	3,151	650	116
Lamb & Mutton	704	4,378	2,682	1,415	1,537

See footnotes at end of table.

-continued

**Stocks in Cold Storage: By Commodity, Region,
and United States, October 31, 1997 (continued)**

Commodity	East South Central	West South Central	Mountain	Pacific	US Total
	<i>1,000 Pounds</i>	<i>1,000 Pounds</i>	<i>1,000 Pounds</i>	<i>1,000 Pounds</i>	<i>1,000 Pounds</i>
Frozen Juice					
Orange Juice Concentrate	97	3,628	1,667	44,882	1,140,877
Other Juice Concentrate	610	27,919	1,243	188,706	465,891
Frozen Vegetables ³					
Asparagus		276	185	3,659	8,442
Limas, Fordhook		106		16,037	19,601
Limas, Baby		788	8,591	32,150	59,988
Green Beans, Reg. Cut		1,481	562	144,811	243,742
Green Beans, Fr. Style		366	516	23,557	39,755
Broccoli, Spears		7,206	68	6,358	17,941
Broccoli, Chopped & Cut		25,166	1,269	41,683	88,102
Brussels Sprouts		2,199	52	11,532	15,381
Carrots, Diced		465	301	27,814	51,223
Carrots, Other		8,908	613	156,571	194,528
Cauliflower		2,111	889	29,156	37,307
Corn, Cut		2,807	1,499	334,243	468,974
Corn, Cob		2,317	2,760	245,048	329,969
Mixed Vegetables		4,102	278	33,671	49,672
Okra		22,077	2	624	62,294
Onion Rings		289	4	1,688	10,285
Onions, Other		879	2,089	18,366	29,831
Blackeye Peas		994		301	10,920
Green Peas		1,787	18,169	180,072	306,008
Peas & Carrots Mixed		73	6	6,157	7,717
Spinach		6,184	212	44,619	75,554
Squash, Summer/Zucchini		7,362	327	26,789	78,625
Southern Greens		7,420		737	15,629
Other Vegetables		40,106	5,089	138,685	287,770
Potatoes					
French Fries	3,501	2,420	302,524	519,908	1,123,806
Other Frozen	608	3,345	55,174	99,763	231,014
Meat					
Frozen Beef					
Boneless	2,516	66,864	3,291	56,399	318,174
Beef Cuts	1,209	5,946	3,947	5,498	33,382
Frozen Pork					
Ribbs	1,762	2,146	6	784	39,370
Trimmings	654	1,294	50	1,773	37,950
Other	6,736	15,131	288	3,788	80,229
Other					
Veal		193		730	6,532
Lamb & Mutton	1	2,327	1,361	2,489	16,894

¹ East North Central combined with South Atlantic. Mountain and West North Central combined with West South Central.

² Middle Atlantic combined with South Atlantic.

³ New England combined with Middle Atlantic. East South Central combined with South Atlantic.

**Stocks in Cold Storage: By Commodity, Region,
and United States, November 30, 1997**

Commodity	New England	Middle Atlantic	East North Central	West North Central	South Atlantic
	<i>1,000 Pounds</i>	<i>1,000 Pounds</i>	<i>1,000 Pounds</i>	<i>1,000 Pounds</i>	<i>1,000 Pounds</i>
Total Fresh Apples	93,884	649,877	495,579	4,164	350,111
Nuts					
Shelled					
Peanuts		10	664	26	122,053
Pecans ¹		46			5,133
In-Shell					
Pecans ¹		6			17,574
Dairy Products					
Butter, Total	1,312	1,459	6,981	1,028	11
Natural Cheese					
American, Total	20,874	37,843	212,468	53,783	254
Other Natural Cheese	70	6,271	36,612	3,575	2,467
Broilers (Whole)	65	692	996	1,185	9,313
Hens		32	515	613	1,990
Other Chicken	1,655	5,260	12,551	24,010	161,461
Total	1,720	5,984	14,062	25,808	172,764
Whole Turkeys	2,592	17,682	17,807	26,042	32,127
Other Turkey	589	13,160	28,572	61,941	63,202
Total	3,181	30,842	46,379	87,983	95,329
Ducks	41	109	1,473	23	69
Total	4,942	36,935	61,914	113,814	268,162
Frozen Fruit					
Apples	41	16,280	19,337	92	2,774
Blueberries	17,456	7,246	49,149	621	4,182
Cherries, Tart (RSP)	94	3,623	129,201	148	207
Cherries, Sweet		1,092	8,119	261	92
Peaches	107	1,599	1,547	982	1,103
Raspberries, Red	135	1,181	915	825	194
Strawberries, Total	76	1,919	5,234	5,156	2,457
Other Frozen Fruit	152,290	53,422	262,882	2,163	6,171

See footnotes at end of table.

--continued

**Stocks in Cold Storage: By Commodity, Region,
and United States, November 30, 1997 (continued)**

Commodity	East South Central	West South Central	Mountain	Pacific	US Total
	<i>1,000 Pounds</i>	<i>1,000 Pounds</i>	<i>1,000 Pounds</i>	<i>1,000 Pounds</i>	<i>1,000 Pounds</i>
Total Fresh Apples	59	1,091	89,326	3,487,360	5,171,451
Nuts					
Shelled					
Peanuts	30,165	68,379	148	1,807	223,252
Pecans ¹	136	9,664		122	15,101
In-Shell					
Pecans ¹	1,084	17,936		1	36,601
Dairy Products					
Butter, Total	32	1,064	221	3,063	15,171
Natural Cheese					
American, Total	197	610	15,422	43,522	384,973
Other Natural Cheese	1,471	166	568	2,255	53,455
Broilers (Whole)	774	10,386	191	4,990	28,592
Hens	1,741	66	375	574	5,906
Other Chicken	100,301	233,392	3,013	36,365	578,008
Total	102,816	243,844	3,579	41,929	612,506
Whole Turkeys	3,530	49,492	17,488	31,733	198,493
Other Turkey	707	25,177	6,214	33,524	233,086
Total	4,237	74,669	23,702	65,257	431,579
Ducks	4	35	55	152	1,961
Total	107,057	318,548	27,336	107,338	1,046,046
Frozen Fruit					
Apples	177	1,227	292	12,844	53,064
Blueberries	243	721	588	16,213	96,419
Cherries, Tart (RSP)	46	264	7,487	7,197	148,267
Cherries, Sweet	164	130	45	5,456	15,359
Peaches	102	844	84	74,969	81,337
Raspberries, Red	231	190	35	49,926	53,632
Strawberries, Total	2,176	20,132	2,526	212,187	251,863
Other Frozen Fruit	310	8,831	1,289	107,136	594,494

See footnotes at end of table.

-continued

**Stocks in Cold Storage: By Commodity, Region,
and United States, November 30, 1997 (continued)**

Commodity	New England	Middle Atlantic	East North Central	West North Central	South Atlantic
	<i>1,000 Pounds</i>	<i>1,000 Pounds</i>	<i>1,000 Pounds</i>	<i>1,000 Pounds</i>	<i>1,000 Pounds</i>
Frozen Juice					
Orange Juice Conc. ²	72		1,987	327	1,156,108
Other Juice Concentrate	1,281	25,438	15,153	998	181,909
Frozen Vegetables ³					
Asparagus		368	2,842	388	205
Limas, Fordhook		433	777	273	2,055
Limas, Baby		2,304	1,726	2,242	16,258
Green Beans, Reg. Cut		30,461	46,142	1,747	7,253
Green Beans, Fr. Style		8,305	5,486	324	432
Broccoli, Spears		1,371	262	364	1,386
Broccoli, Chopped & Cut		5,372	5,573	2,265	9,459
Brussels Sprouts		325	381	512	514
Carrots, Diced		7,311	27,247	1,112	3,566
Carrots, Other		13,751	12,169	1,827	12,126
Cauliflower		1,994	2,364	801	1,004
Corn, Cut		33,216	42,518	34,669	13,088
Corn, Cob		22,828	12,753	34,599	4,435
Mixed Vegetables		2,436	3,567	2,196	3,353
Okra		829	278	795	36,079
Onion Rings		958	5,500	1,544	765
Onions, Other		1,169	2,558	420	3,882
Blackeye Peas		243	1,341	34	8,811
Green Peas		21,645	29,447	21,203	16,559
Peas & Carrots Mixed		432	714	81	649
Spinach		17,166	1,518	1,206	6,470
Squash, Summer/Zucchini		3,102	28,220	335	12,816
Southern Greens		3,178	20	99	5,373
Other Vegetables		28,575	33,084	13,454	28,891
Potatoes					
French Fries	39,220	22,613	112,746	101,111	23,196
Other Frozen	6,633	15,649	29,509	10,785	3,272
Meat					
Frozen Beef					
Boneless	8,756	32,110	39,080	91,307	37,045
Beef Cuts	4,045	1,005	2,783	7,005	870
Frozen Pork					
Ribs	322	1,350	16,501	20,330	4,340
Trimmings	299	986	7,739	22,624	5,971
Other	417	1,777	17,351	24,919	4,812
Other					
Veal	528	1,330	2,866	671	116
Lamb & Mutton	737	4,359	2,778	1,462	1,507

See footnotes at end of table.

--continued

**Stocks in Cold Storage: By Commodity, Region,
and United States, November 30, 1997 (continued)**

Commodity	East South Central	West South Central	Mountain	Pacific	US Total
	<i>1,000 Pounds</i>	<i>1,000 Pounds</i>	<i>1,000 Pounds</i>	<i>1,000 Pounds</i>	<i>1,000 Pounds</i>
Frozen Juice					
Orange Juice Concentrate	92	3,521	1,882	45,286	1,209,275
Other Juice Concentrate	519	19,736	1,255	173,656	419,945
Frozen Vegetables ³					
Asparagus		244	146	3,739	7,932
Limas, Fordhook		104		14,609	18,251
Limas, Baby		784	8,445	38,514	70,273
Green Beans, Reg. Cut		1,251	463	130,676	217,993
Green Beans, Fr. Style		386	407	22,468	37,808
Broccoli, Spears		7,264	132	6,989	17,768
Broccoli, Chopped & Cut		24,629	1,367	45,238	93,903
Brussels Sprouts		2,238	69	13,447	17,486
Carrots, Diced		592	484	43,786	84,098
Carrots, Other		9,087	1,681	193,131	243,772
Cauliflower		5,098	1,052	34,743	47,056
Corn, Cut		3,162	1,514	305,071	433,238
Corn, Cob		2,181	2,594	230,004	309,394
Mixed Vegetables		3,750	329	33,776	49,407
Okra		20,001		580	58,562
Onion Rings		192	4	1,843	10,806
Onions, Other		871	2,178	19,542	30,620
Blackeye Peas		1,367		289	12,085
Green Peas		1,568	2,023	143,822	236,267
Peas & Carrots Mixed		93	14	4,840	6,823
Spinach		6,213	179	42,764	75,516
Squash, Summer/Zucchini		6,565	442	27,604	79,084
Southern Greens		9,203	1	791	18,665
Other Vegetables		43,137	5,279	151,866	304,286
Potatoes					
French Fries	2,905	1,637	311,012	484,312	1,098,752
Other Frozen	539	3,985	59,375	89,449	219,196
Meat					
Frozen Beef					
Boneless	2,739	76,561	4,545	55,149	347,292
Beef Cuts	1,216	4,974	3,877	5,432	31,207
Frozen Pork					
Ribs	1,987	2,132	23	835	47,820
Trimblings	532	1,017	53	1,891	41,112
Other	4,794	16,166	414	2,941	73,591
Other					
Veal		192		884	6,587
Lamb & Mutton	1	2,184	1,283	2,231	16,542

¹ East North Central combined with South Atlantic. Mountain and West North Central Combined with West South Central.

² Middle Atlantic combined with South Atlantic.

³ New England combined with Middle Atlantic. East South Central combined with South Atlantic.

**Public General Warehouses: Cold Storage Space Occupied
by Region and United States, November 1997**

Region	Cooler				Freezer			
	Usable Space	Usable Space Occupied			Usable Space	Usable Space Occupied		
		Nov 30 1997	Nov 30 1996	Oct 31 1997		Nov 30 1997	Nov 30 1996	Oct 31 1997
	<i>1,000 Cu Ft</i>	<i>Percent</i>	<i>Percent</i>	<i>Percent</i>	<i>1,000 Cu Ft</i>	<i>Percent</i>	<i>Percent</i>	<i>Percent</i>
New England	2,415	45	51	54	20,250	37	66	68
Middle Atlantic	34,505	56	71	71	85,253	71	87	87
E. North Central	40,607	55	58	58	171,549	62	65	62
W. North Central	43,711	46	50	49	146,113	50	60	60
South Atlantic	42,457	42	45	45	135,074	60	64	62
E. South Central	9,518	35	47	46	35,210	63	70	68
W. South Central	17,815	23	35	32	114,729	64	73	70
Mountain	5,894	53	51	47	45,705	66	71	73
Pacific	44,980	46	41	39	244,046	76	81	81
US	241,902	46	51	50	997,929	64	71	70

Cold Storage Regions



**Apples in Cold Storage: By State
and United States, November 1997**

State	All Warehouses		
	Nov 30, 1996	Oct 31, 1997	Nov 30, 1997
	<i>1,000 Pounds</i>	<i>1,000 Pounds</i>	<i>1,000 Pounds</i>
CA	166,339	261,568	170,756
MI	311,766	444,738	459,102
N ENG	78,905	110,463	93,884
NY	341,670	372,708	389,718
OH	13,410	24,050	24,050
OR	55,614	54,539	41,571
PA	229,362	292,614	259,177
VA	140,669	190,945	190,358
WA	3,790,232	3,619,602	3,275,034
WV	66,461	78,602	74,225
Other States	212,626	251,212	193,576
US	5,407,054	5,701,041	5,171,451

Survey Procedures: Questionnaires are mailed about the 24th of each month to all operators on the list of approximately 1,400 public and private cold storage warehouses. In addition, apple data are obtained from special surveys and other sources (State Departments of Agriculture, U.S. Apple Association, etc.). All survey data represent stocks as of the end of the month.

Data are collected from warehouses artificially cooled to a temperature of 50 degrees Fahrenheit or lower, and whose food products are normally stored for 30 days or more. All food items in these facilities are reported regardless of the number of days stored at the time of the report. Also included are specialized storage facilities meeting the 30 day requirement, such as fruit houses, dairy manufacturing plants, frozen fruit, fruit juice, and vegetable processors, and poultry and meat packing plants. Excluded are stocks in space maintained by wholesalers, jobbers, distributors, chain stores, locker plants containing individual lockers, meat packer branch houses, and frozen food processors whose entire inventories are turned over more than once a month.

Estimating Procedures: Data for reporting firms are added to estimates for non-reporting firms to obtain regional and National totals. Estimates for non-reporting firms are obtained by multiplying the previous month's figure by a percent change from the previous month. The percent change is calculated for each item from totals of the current and previous month summed from firms that reported both months.

Revision Policy: Data are revised the following month based on late reports or corrected data. Final figures are published in the annual summary in February of the following year.

Reliability: Reports are received from 900 firms each month which represent about 70 percent of the total capacity. Firms that are not on the list or firms who have never reported are not represented in the data. Monthly data can vary due to different firms reporting month to month. Survey data are also subject to non-sampling errors such as omissions and mistakes in reporting and in processing the data. While these errors cannot be measured directly, they are minimized by carefully reviewing all reported data for consistency and reasonableness.

The next "Cold Storage" report will be released at 3 p.m. ET on January 21, 1998.

The United States Department of Agriculture (USDA) prohibits discrimination in its programs on the basis of race, color, national origin, sex, religion, age, disability, political beliefs, and marital or familial status. Persons with disabilities who require alternative means for communication of program information (braille, large print, audiotape, etc.) should contact the USDA's TARGET Center at 202-720-2600 (voice and TDD).

To file a complaint, write the Secretary of Agriculture, USDA, Washington, D.C., 20250, or call 1-800-245-6340 (voice) or 202-720-1127 (TDD). USDA is an equal employment opportunity employer.

ACCESS TO REPORTS!!

For your convenience, there are several ways to obtain NASS reports, data products, and services:

INTERNET ACCESS

All NASS reports are available free of charge on the worldwide Internet. For access, connect to the Internet and go to the NASS Home Page at: <http://www.usda.gov/nass/>. Select "Today's Reports" or Publications and then Reports by Calendar or Publications and then Search, by Title or Subject.

E-MAIL SUBSCRIPTION

All NASS reports are available by subscription free of charge direct to your e-mail address. Send an e-mail message to: usda-reports@usda.mannlib.cornell.edu. In the body of the message type the word: **list**.

AUTOFAX ACCESS

NASSFax service is available for some reports from your fax machine. Please call 202-720-2000, using the handset attached to your fax. Respond to the voice prompts. Document 0411 is a list of available reports.

PRINTED REPORTS OR DATA PRODUCTS

CALL OUR TOLL-FREE ORDER DESK: 800-999-6779 (U.S. and Canada)
Other areas, please call 703-834-0125 FAX: 703-834-0110
(Visa, MasterCard, check, or money order acceptable for payment.)

ASSISTANCE

For **assistance** with general agricultural statistics or further information about NASS or its products or services, contact the **Agricultural Statistics Hotline** at **800-727-9540**, 7:30 a.m. to 4:00 p.m. ET, or e-mail: nass@nass.usda.gov.



Cold Storage



USDA
Washington, D.C.

Released December 19, 1997, by the National Agricultural Statistics Service (NASS), Agricultural Statistics Board, U.S. Department of Agriculture. For information on "Cold Storage" call John Lange at (202) 720-0585, office hours 7:30 a.m. to 4:00 p.m. ET.

Frozen food stocks in refrigerated warehouses on November 30, 1997, were greater than year earlier levels for concentrated orange juice, meat, potatoes, poultry, fruit, and vegetables. Cooler stocks of pears and peanuts were higher than a year earlier.

Total red meat supplies in freezers increased slightly from October and were up 18 percent from November 1996. Frozen pork stocks were 6 percent below last month, but were up 5 percent from last year. Stocks of pork bellies were up 76 percent from last month, but were 18 percent below a year ago.

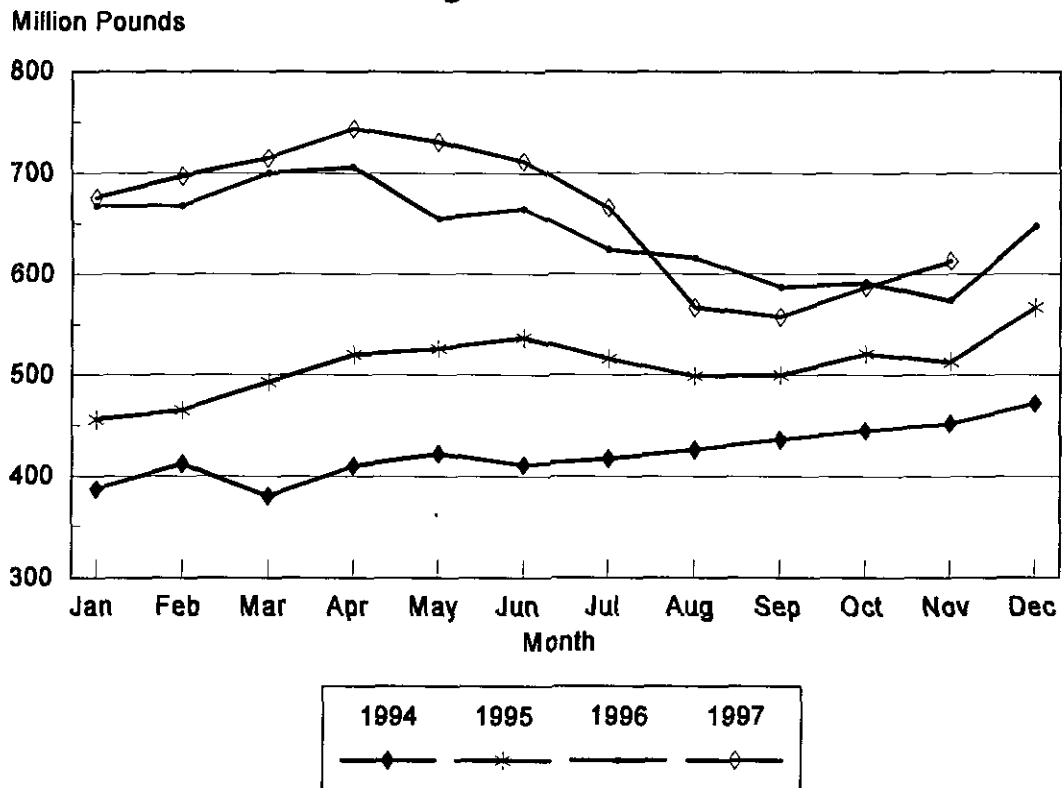
Total frozen poultry supplies decreased 21 percent from last month, but were 13 percent above last year. Total stocks of chicken increased 4 percent during the month and were 7 percent above 1996. Total pounds of turkey in freezers decreased 41 percent from last month, but were up 24 percent from last year's level.

Public cooler occupancy was at 50 percent of capacity, up 4 points from a year ago. Public freezer occupancy at 70 percent was down 1 point from last month, but 6 points above the year earlier level.

Table of Contents

	Page
Stocks in Cold Storage: By Commodity, United States, November 1997	2
Stocks in Cold Storage: By Commodity, Region, and United States, October 31, 1997	6
Stocks in Cold Storage: By Commodity, Region, and United States, November 30, 1997	10
Public General Warehouses: Cold Storage Space Occupied by Region and United States, November 1997	14
Apples in Cold Storage: By State and United States, November 1997	15
Survey and Estimating Procedures, Revision Policy and Reliability	16

Total Frozen Chicken Cold Storage Stocks, 1994-1997



**Stocks in Cold Storage: By Commodity,
United States, November 1997**

Commodity	Stocks in All Warehouses			Percent of		Public Warehouse Stocks
	Nov 30, 1996	Oct 31, 1997	Nov 30, 1997	Nov 1996	Oct 1997	Nov 30, 1997
	<i>1,000 Pounds</i>	<i>1,000 Pounds</i>	<i>1,000 Pounds</i>	<i>Percent</i>	<i>Percent</i>	<i>1,000 Lbs</i>
Fresh Fruit						
Apples						
Regular Storage	1,495,718	2,146,263	1,543,929	103	72	
Controlled Atmosphere	3,911,336	3,554,778	3,627,522	93	102	
Total	5,407,054	5,701,041	5,171,451	96	91	59,515
Pears						
Bartlett	5,996	49,781	9,593	160	19	
Other Varieties	275,338	535,627	443,811	161	83	
Total	281,334	585,408	453,404	161	77	1,466
Nuts						
Shelled						
Peanuts	182,299	181,767	223,252	122	123	
Pecans	30,019	16,502	15,101	50	92	
Other Shelled	85,970	75,080	88,596	103	118	
Total	298,288	273,349	326,949	110	120	150,719
In-Shell						
Peanuts	22,079	10,421	10,725	49	103	
Pecans	27,291	9,521	36,601	134	384	
Other In-Shell	9,903	13,383	10,251	104	77	
Total	59,273	33,325	57,577	97	173	17,988
Dairy Products						
Butter, Total	17,628	26,581	15,171	86	57	12,372
(Government Owned)	227	392	302	133	77	
Natural Cheese						
American, Total	369,743	399,520	384,973	104	96	
(Government Owned)	113	61	150	133	246	
Swiss	13,344	11,630	12,167	91	105	
Other Natural Cheese	97,186	78,542	53,455	55	68	
Total	480,273	489,692	450,595	94	92	233,551
Eggs, Frozen						
Whites	1,139	899	936	82	104	
Yolks	1,110	1,214	960	86	79	
Whole & Mixed	6,343	7,977	7,599	120	95	
Unclassified	1,759	825	703	40	85	
Total	10,351	10,915	10,198	99	93	9,914
Frozen Poultry						
Chicken						
Broilers (Whole)	26,309	25,009	28,592	109	114	
Hens	7,741	8,052	5,906	76	73	
Other Chicken	540,310	554,243	578,008	107	104	
Total	574,360	587,304	612,506	107	104	
Turkey						
Whole Turkeys	167,083	490,653	198,493	119	40	
Other Turkey	180,688	245,988	233,086	129	95	
Total	347,771	736,641	431,579	124	59	
Ducks	1,866	2,461	1,961	105	80	
Total	923,997	1,326,406	1,046,046	113	79	922,178

**Stocks in Cold Storage: By Commodity,
United States, November 1997 (Continued)**

Commodity	Stocks in All Warehouses			Percent of		Public Warehouse Stocks
	Nov 30, 1996	Oct 31, 1997	Nov 30, 1997	Nov 1996	Oct 1997	Nov 30, 1997
	<i>1,000 Pounds</i>	<i>1,000 Pounds</i>	<i>1,000 Pounds</i>	<i>Percent</i>	<i>Percent</i>	<i>1,000 Lbs</i>
Frozen Fruit						
Apples	63,138	52,631	53,064	84	101	
Apricots	9,465	16,458	16,222	171	99	
Blackberries, Total	22,441	30,375	28,366	126	93	
IQF	13,508	15,591	14,855	110	95	
Pails and Tubs	3,061	4,671	3,771	123	81	
Barrels, 400 lbs net	4,763	8,516	8,226	173	97	
Concentrate	1,109	1,597	1,514	137	95	
Blueberries	66,381	102,497	96,419	145	94	
Boysenberries	4,303	6,169	6,060	141	98	
Cherries, Tart (RSP)	137,226	154,891	148,267	108	96	
Cherries, Tart (Juice)	3,952	2,286	1,834	46	80	
Cherries, Sweet	13,212	19,394	15,359	116	79	
Grapes	5,253	4,365	3,757	72	86	
Peaches	54,796	86,858	81,337	148	94	
Raspberries, Black	1,493	1,103	873	58	79	
Raspberries, Red, Total	40,850	57,723	53,632	131	93	
IQF	14,327	14,501	12,539	88	86	
Pails and Tubs	14,111	15,948	16,739	119	105	
Barrels, 400 lbs net	11,223	26,095	23,048	205	88	
Concentrate	1,189	1,179	1,306	110	111	
Strawberries, Total	240,965	282,728	251,863	105	89	
Pkgs. 20 Oz. & Less	94,940		108,049	114		
Pkgs. Over 20 Oz.	146,025		143,814	98		
Other Frozen Fruit	547,603	622,412	594,494	109	96	
Total	1,211,078	1,439,890	1,351,547	112	94	803,474
Frozen Juice						
Orange Juice Conc. ¹	690,976	1,140,877	1,209,275	175	106	
(Gallon Equivalent)	69,824	115,287	122,198			
Other Juice Concentrate	412,932	465,891	419,945	102	90	
Total	1,103,908	1,606,768	1,629,220	148	101	253,679
Frozen Vegetables						
Asparagus	8,431	8,442	7,932	94	94	
Limas, Fordhook	17,278	19,601	18,251	106	93	
Limas, Baby	55,442	59,988	70,273	127	117	
Green Beans, Reg. Cut	181,385	243,742	217,993	120	89	
Green Beans, Fr. Style	45,996	39,755	37,808	82	95	
Broccoli, Spears	20,148	17,941	17,768	88	99	
Broccoli, Chopped & Cut	92,263	88,102	93,903	102	107	
Brussels Sprouts	16,233	15,381	17,486	108	114	
Carrots, Diced	95,333	51,223	84,098	88	164	
Carrots, Other	202,165	194,528	243,772	121	125	
Cauliflower	47,354	37,307	47,056	99	126	
Corn, Cut	386,691	468,974	433,238	112	92	
Corn, Cob	349,040	329,969	309,394	89	94	
Mixed Vegetables	56,384	49,672	49,407	88	99	
Okra	34,873	62,294	58,562	168	94	
Onion Rings	10,525	10,285	10,806	103	105	
Onions, Other	32,261	29,831	30,620	95	103	
Blackeye Peas	11,550	10,920	12,085	105	111	
Green Peas	243,530	306,008	236,267	97	77	
Peas & Carrots Mixed	8,230	7,717	6,823	83	88	
Spinach	49,277	75,554	75,516	153	100	
Squash, Summer/Zucchini	64,026	78,625	79,084	124	101	
Southern Greens	19,239	15,629	18,665	97	119	
Other Vegetables	340,387	287,770	304,286	89	106	
Total	2,388,041	2,509,258	2,481,093	104	99	1,685,947

See footnotes at end of table.

-continued

**Stocks in Cold Storage: By Commodity,
United States, November 1997 (Continued)**

Commodity	Stocks in All Warehouses			Percent of		Public Warehouse Stocks
	Nov 30, 1996	Oct 31, 1997	Nov 30, 1997	Nov 1996	Oct 1997	Nov 30, 1997
	<i>1,000 Pounds</i>	<i>1,000 Pounds</i>	<i>1,000 Pounds</i>	<i>Percent</i>	<i>Percent</i>	<i>1,000 Lbs</i>
Potatoes						
French Fries	962,240	1,123,806	1,098,752	114	98	
Other Frozen	184,054	231,014	219,196	119	95	
Total	1,146,294	1,354,820	1,317,948	115	97	933,252
Meat						
Frozen Beef						
Boneless	259,539	318,174	347,292	134	109	
Beef Cuts	28,484	33,382	31,207	110	93	
Total	288,023	351,556	378,499	131	108	376,230
(Government Owned)	5,544	4,208	3,513	63	83	
Frozen Pork						
Picnics, Bone-in	5,257	13,786	10,940	208	79	
Hams, Total	48,745	88,789	61,345	126	69	56,950
Bone-in	32,918	50,207	32,273	98	64	29,972
Boneless	15,827	38,582	29,072	184	75	26,978
Bellies	30,943	14,408	25,405	82	176	
Loins, Total	16,863	17,608	23,068	137	131	20,673
Bone-in	9,199	7,738	12,775	139	165	
Boneless	7,664	9,870	10,293	134	104	
Ribs	54,980	39,370	47,820	87	121	
Butts	4,977	6,906	7,829	157	113	
Trimmings	31,265	37,950	41,112	131	108	
Other	76,818	80,229	73,591	96	92	
Variety Meats	30,560	42,413	30,435	100	72	
Unclassified	15,979	12,776	11,944	75	93	
Total	316,387	354,235	333,489	105	94	291,567
(Government Owned)	1,026	1,216	1,030	100	85	
Other						
Veal	6,528	6,532	6,587	101	101	
Lamb & Mutton	9,788	16,894	16,542	169	98	
Total	16,316	23,426	23,129	142	99	22,859
Canned						
Canned Hams	5,524	8,768	4,879	88	56	
Other Canned Meat	882	1,073	765	87	71	
Total	6,406	9,841	5,644	88	57	4,699
Total	627,132	739,058	740,761	118	100	695,355
Miscellaneous						
Cooler	735,542	959,989	814,007	111	85	533,762
Freezer	1,689,778	1,886,523	1,857,480	110	98	1,799,626
Total	2,425,320	2,846,512	2,671,487	110	94	2,333,388
Commodities						
Stored in Coolers	7,269,521	8,053,590	7,282,779	100	90	1,004,490
Stored in Freezers	9,110,450	10,889,433	10,440,668	115	96	7,108,308
Total	16,379,971	18,943,023	17,723,447	108	94	8,112,798

¹ Adjusted to 42.0 degrees Brix equivalent (9.896 pounds per gallon).

**Stocks in Cold Storage: By Commodity, Region,
and United States, October 31, 1997**

Commodity	New England	Middle Atlantic	East North Central	West North Central	South Atlantic
	<i>1,000 Pounds</i>	<i>1,000 Pounds</i>	<i>1,000 Pounds</i>	<i>1,000 Pounds</i>	<i>1,000 Pounds</i>
Total Fresh Apples	110,463	667,340	488,576	10,050	372,904
Nuts					
Shelled					
Peanuts		14	658	23	105,358
Pecans ¹		59			4,284
In-Shell					
Pecans ¹		24			5,327
Dairy Products					
Butter, Total	3,012	1,966	11,612	2,828	103
Natural Cheese					
American, Total	21,854	39,131	217,362	59,272	263
Other Natural Cheese	145	11,269	53,618	3,980	3,934
Broilers (Whole)	69	664	1,054	1,154	9,510
Hens		21	698	841	3,278
Other Chicken	1,426	4,569	11,000	23,112	146,008
Total	1,495	5,254	12,752	25,107	158,796
Whole Turkeys	14,999	44,445	54,512	73,293	61,110
Other Turkey	757	15,672	28,380	62,646	69,286
Total	15,756	60,117	82,892	135,939	130,396
Ducks	52	103	1,412	102	96
Total	17,303	65,474	97,056	161,148	289,288
Frozen Fruit					
Apples	9	16,114	19,121	197	3,035
Blueberries	18,549	10,329	51,375	684	4,395
Cherries, Tart (RSP)	102	4,025	133,493	158	94
Cherries, Sweet		3,077	9,374	324	256
Peaches	113	3,510	2,675	840	1,165
Raspberries, Red	171	1,229	934	882	247
Strawberries, Total	80	3,030	5,313	5,470	2,692
Other Frozen Fruit	162,377	57,854	279,369	2,313	6,899

See footnotes at end of table.

-continued

**Stocks in Cold Storage: By Commodity, Region,
and United States, October 31, 1997 (continued)**

Commodity	East South Central	West South Central	Mountain	Pacific	US Total
	<i>1,000 Pounds</i>	<i>1,000 Pounds</i>	<i>1,000 Pounds</i>	<i>1,000 Pounds</i>	<i>1,000 Pounds</i>
Total Fresh Apples	133	1,318	114,548	3,935,709	5,701,041
Nuts					
Shelled					
Peanuts	24,214	49,915	115	1,470	181,767
Pecans ¹	124	11,807		228	16,502
In-Shell					
Pecans ¹	183	3,979		8	9,521
Dairy Products					
Butter, Total	59	1,113	374	5,514	26,581
Natural Cheese					
American, Total	200	1,076	15,971	44,391	399,520
Other Natural Cheese	1,973	67	798	2,758	78,542
Broilers (Whole)	696	6,699	194	4,969	25,009
Hens	1,846	120	302	946	8,052
Other Chicken	106,146	220,774	2,050	39,158	554,243
Total	108,688	227,593	2,546	45,073	587,304
Whole Turkeys	11,346	115,524	28,062	87,362	490,653
Other Turkey	918	26,473	4,246	37,610	245,988
Total	12,264	141,997	32,308	124,972	736,641
Ducks	6	105	60	525	2,461
Total	120,958	369,695	34,914	170,570	1,326,406
Frozen Fruit					
Apples	201	1,374	282	12,298	52,631
Blueberries	266	733	662	15,504	102,497
Cherries, Tart (RSP)	35	583	8,572	7,829	154,891
Cherries, Sweet	180	110	55	6,018	19,394
Peaches	129	1,170	103	77,153	86,858
Raspberries, Red	111	786	42	53,321	57,723
Strawberries, Total	2,157	25,169	3,000	235,817	282,728
Other Frozen Fruit	384	8,683	1,705	102,828	622,412

See footnotes at end of table.

--continued

**Stocks in Cold Storage: By Commodity, Region,
and United States, October 31, 1997 (continued)**

Commodity	New England	Middle Atlantic	East North Central	West North Central	South Atlantic
	<i>1,000 Pounds</i>	<i>1,000 Pounds</i>	<i>1,000 Pounds</i>	<i>1,000 Pounds</i>	<i>1,000 Pounds</i>
Frozen Juice					
Orange Juice Conc. ²	61		1,885	444	1,088,213
Other Juice Concentrate	1,179	27,069	15,261	1,415	202,489
Frozen Vegetables ³					
Asparagus		369	3,266	425	262
Limas, Fordhook		287	875	326	1,970
Limas, Baby		1,572	1,941	2,199	12,747
Green Beans, Reg. Cut		36,125	52,182	1,642	6,939
Green Beans, Fr. Style		8,896	5,601	372	447
Broccoli, Spears		1,527	236	454	2,092
Broccoli, Chopped & Cut		4,569	4,900	2,964	7,551
Brussels Sprouts		338	368	523	369
Carrots, Diced		3,517	15,671	1,146	2,309
Carrots, Other		7,803	9,793	1,872	8,968
Cauliflower		1,641	2,026	613	871
Corn, Cut		34,662	48,171	32,735	14,857
Corn, Cob		24,573	13,585	36,420	5,266
Mixed Vegetables		2,399	3,914	2,033	3,275
Okra		801	285	412	38,093
Onion Rings		759	5,215	1,680	650
Onions, Other		1,351	2,658	512	3,976
Blackeye Peas		289	320	29	8,987
Green Peas		26,974	35,342	23,702	19,962
Peas & Carrots Mixed		448	337	123	573
Spinach		15,290	1,570	1,257	6,422
Squash, Summer/Zucchini		1,854	28,507	380	13,406
Southern Greens		2,233	23	140	5,076
Other Vegetables		28,771	31,901	14,131	29,087
Potatoes					
French Fries	36,401	23,643	117,041	100,229	18,139
Other Frozen	6,769	16,298	34,851	11,163	3,043
Meat					
Frozen Beef					
Boneless	7,070	32,271	29,127	86,412	34,224
Beef Cuts	4,088	1,467	3,330	7,185	712
Frozen Pork					
Ribs	266	1,167	14,949	15,050	3,240
Trimming	276	889	7,653	19,078	6,283
Other	283	1,934	20,385	26,875	4,809
Other					
Veal	528	1,164	3,151	650	116
Lamb & Mutton	704	4,378	2,682	1,415	1,537

See footnotes at end of table.

--continued

**Stocks in Cold Storage: By Commodity, Region,
and United States, October 31, 1997 (continued)**

Commodity	East South Central	West South Central	Mountain	Pacific	US Total
	<i>1,000 Pounds</i>	<i>1,000 Pounds</i>	<i>1,000 Pounds</i>	<i>1,000 Pounds</i>	<i>1,000 Pounds</i>
Frozen Juice					
Orange Juice Concentrate	97	3,628	1,667	44,882	1,140,877
Other Juice Concentrate	610	27,919	1,243	188,706	465,891
Frozen Vegetables ³					
Asparagus		276	185	3,659	8,442
Limas, Fordhook		106		16,037	19,601
Limas, Baby		788	8,591	32,150	59,988
Green Beans, Reg. Cut		1,481	562	144,811	243,742
Green Beans, Fr. Style		366	516	23,557	39,755
Broccoli, Spears		7,206	68	6,358	17,941
Broccoli, Chopped & Cut		25,166	1,269	41,683	88,102
Brussels Sprouts		2,199	52	11,532	15,381
Carrots, Diced		465	301	27,814	51,223
Carrots, Other		8,908	613	156,571	194,528
Cauliflower		2,111	889	29,156	37,307
Corn, Cut		2,807	1,499	334,243	468,974
Corn, Cob		2,317	2,760	245,048	329,969
Mixed Vegetables		4,102	278	33,671	49,672
Okra		22,077	2	624	62,294
Onion Rings		289	4	1,688	10,285
Onions, Other		879	2,089	18,366	29,831
Blackeye Peas		994		301	10,920
Green Peas		1,787	18,169	180,072	306,008
Peas & Carrots Mixed		73	6	6,157	7,717
Spinach		6,184	212	44,619	75,554
Squash, Summer/Zucchini		7,362	327	26,789	78,625
Southern Greens		7,420		737	15,629
Other Vegetables		40,106	5,089	138,685	287,770
Potatoes					
French Fries	3,501	2,420	302,524	519,908	1,123,806
Other Frozen	608	3,345	55,174	99,763	231,014
Meat					
Frozen Beef					
Boneless	2,516	66,864	3,291	56,399	318,174
Beef Cuts	1,209	5,946	3,947	5,498	33,382
Frozen Pork					
Ribs	1,762	2,146	6	784	39,370
Trimming	654	1,294	50	1,773	37,950
Other	6,736	15,131	288	3,788	80,229
Other					
Veal		193		730	6,532
Lamb & Mutton	1	2,327	1,361	2,489	16,894

¹ East North Central combined with South Atlantic. Mountain and West North Central combined with West South Central.

² Middle Atlantic combined with South Atlantic.

³ New England combined with Middle Atlantic. East South Central combined with South Atlantic.

**Stocks in Cold Storage: By Commodity, Region,
and United States, November 30, 1997**

Commodity	New England	Middle Atlantic	East North Central	West North Central	South Atlantic
	<i>1,000 Pounds</i>	<i>1,000 Pounds</i>	<i>1,000 Pounds</i>	<i>1,000 Pounds</i>	<i>1,000 Pounds</i>
Total Fresh Apples	93,884	649,877	495,579	4,164	350,111
Nuts					
Shelled					
Peanuts		10	664	26	122,053
Pecans ¹		46			5,133
In-Shell					
Pecans ¹		6			17,574
Dairy Products					
Butter, Total	1,312	1,459	6,981	1,028	11
Natural Cheese					
American, Total	20,874	37,843	212,468	53,783	254
Other Natural Cheese	70	6,271	36,612	3,575	2,467
Broilers (Whole)	65	692	996	1,185	9,313
Hens		32	515	613	1,990
Other Chicken	1,655	5,260	12,551	24,010	161,461
Total	1,720	5,984	14,062	25,808	172,764
Whole Turkeys	2,592	17,682	17,807	26,042	32,127
Other Turkey	589	13,160	28,572	61,941	63,202
Total	3,181	30,842	46,379	87,983	95,329
Ducks	41	109	1,473	23	69
Total	4,942	36,935	61,914	113,814	268,162
Frozen Fruit					
Apples	41	16,280	19,337	92	2,774
Blueberries	17,456	7,246	49,149	621	4,182
Cherries, Tart (RSP)	94	3,623	129,201	148	207
Cherries, Sweet		1,092	8,119	261	92
Peaches	107	1,599	1,547	982	1,103
Raspberries, Red	135	1,181	915	825	194
Strawberries, Total	76	1,919	5,234	5,156	2,457
Other Frozen Fruit	152,290	53,422	262,882	2,163	6,171

See footnotes at end of table.

--continued

**Stocks in Cold Storage: By Commodity, Region,
and United States, November 30, 1997 (continued)**

Commodity	East South Central	West South Central	Mountain	Pacific	US Total
	<i>1,000 Pounds</i>	<i>1,000 Pounds</i>	<i>1,000 Pounds</i>	<i>1,000 Pounds</i>	<i>1,000 Pounds</i>
Total Fresh Apples	59	1,091	89,326	3,487,360	5,171,451
Nuts					
Shelled					
Peanuts	30,165	68,379	148	1,807	223,252
Pecans ¹	136	9,664		122	15,101
In-Shell					
Pecans ¹	1,084	17,936		1	36,601
Dairy Products					
Butter, Total	32	1,064	221	3,063	15,171
Natural Cheese					
American, Total	197	610	15,422	43,522	384,973
Other Natural Cheese	1,471	166	568	2,255	53,455
Broilers (Whole)	774	10,386	191	4,990	28,592
Hens	1,741	66	375	574	5,906
Other Chicken	100,301	233,392	3,013	36,365	578,008
Total	102,816	243,844	3,579	41,929	612,506
Whole Turkeys	3,530	49,492	17,488	31,733	198,493
Other Turkey	707	25,177	6,214	33,524	233,086
Total	4,237	74,669	23,702	65,257	431,579
Ducks	4	35	55	152	1,961
Total	107,057	318,548	27,336	107,338	1,046,046
Frozen Fruit					
Apples	177	1,227	292	12,844	53,064
Blueberries	243	721	588	16,213	96,419
Cherries, Tart (RSP)	46	264	7,487	7,197	148,267
Cherries, Sweet	164	130	45	5,456	15,359
Peaches	102	844	84	74,969	81,337
Raspberries, Red	231	190	35	49,926	53,632
Strawberries, Total	2,176	20,132	2,526	212,187	251,863
Other Frozen Fruit	310	8,831	1,289	107,136	594,494

See footnotes at end of table.

-continued

**Stocks in Cold Storage: By Commodity, Region,
and United States, November 30, 1997 (continued)**

Commodity	New England	Middle Atlantic	East North Central	West North Central	South Atlantic
	<i>1,000 Pounds</i>	<i>1,000 Pounds</i>	<i>1,000 Pounds</i>	<i>1,000 Pounds</i>	<i>1,000 Pounds</i>
Frozen Juice					
Orange Juice Conc. ²	72		1,987	327	1,156,108
Other Juice Concentrate	1,281	25,438	15,153	998	181,909
Frozen Vegetables ³					
Asparagus		368	2,842	388	205
Limas, Fordhook		433	777	273	2,055
Limas, Baby		2,304	1,726	2,242	16,258
Green Beans, Reg. Cut		30,461	46,142	1,747	7,253
Green Beans, Fr. Style		8,305	5,486	324	432
Broccoli, Spears		1,371	262	364	1,386
Broccoli, Chopped & Cut		5,372	5,573	2,265	9,459
Brussels Sprouts		325	381	512	514
Carrots, Diced		7,311	27,247	1,112	3,566
Carrots, Other		13,751	12,169	1,827	12,126
Cauliflower		1,994	2,364	801	1,004
Corn, Cut		33,216	42,518	34,669	13,088
Corn, Cob		22,828	12,753	34,599	4,435
Mixed Vegetables		2,436	3,567	2,196	3,353
Okra		829	278	795	36,079
Onion Rings		958	5,500	1,544	765
Onions, Other		1,169	2,558	420	3,882
Blackeye Peas		243	1,341	34	8,811
Green Peas		21,645	29,447	21,203	16,559
Peas & Carrots Mixed		432	714	81	649
Spinach		17,166	1,518	1,206	6,470
Squash, Summer/Zucchini		3,102	28,220	335	12,816
Southern Greens		3,178	20	99	5,373
Other Vegetables		28,575	33,084	13,454	28,891
Potatoes					
French Fries	39,220	22,613	112,746	101,111	23,196
Other Frozen	6,633	15,649	29,509	10,785	3,272
Meat					
Frozen Beef					
Boneless	8,756	32,110	39,080	91,307	37,045
Beef Cuts	4,045	1,005	2,783	7,005	870
Frozen Pork					
Ribs	322	1,350	16,501	20,330	4,340
Trimmings	299	986	7,739	22,624	5,971
Other	417	1,777	17,351	24,919	4,812
Other					
Veal	528	1,330	2,866	671	116
Lamb & Mutton	737	4,359	2,778	1,462	1,507

See footnotes at end of table.

--continued

**Stocks in Cold Storage: By Commodity, Region,
and United States, November 30, 1997 (continued)**

Commodity	East South Central	West South Central	Mountain	Pacific	US Total
	<i>1,000 Pounds</i>	<i>1,000 Pounds</i>	<i>1,000 Pounds</i>	<i>1,000 Pounds</i>	<i>1,000 Pounds</i>
Frozen Juice					
Orange Juice Concentrate	92	3,521	1,882	45,286	1,209,275
Other Juice Concentrate	519	19,736	1,255	173,656	419,945
Frozen Vegetables ³					
Asparagus		244	146	3,739	7,932
Limas, Fordhook		104		14,609	18,251
Limas, Baby		784	8,445	38,514	70,273
Green Beans, Reg. Cut		1,251	463	130,676	217,993
Green Beans, Fr. Style		386	407	22,468	37,808
Broccoli, Spears		7,264	132	6,989	17,768
Broccoli, Chopped & Cut		24,629	1,367	45,238	93,903
Brussels Sprouts		2,238	69	13,447	17,486
Carrots, Diced		592	484	43,786	84,098
Carrots, Other		9,087	1,681	193,131	243,772
Cauliflower		5,098	1,052	34,743	47,056
Corn, Cut		3,162	1,514	305,071	433,238
Corn, Cob		2,181	2,594	230,004	309,394
Mixed Vegetables		3,750	329	33,776	49,407
Okra		20,001		580	58,562
Onion Rings		192	4	1,843	10,806
Onions, Other		871	2,178	19,542	30,620
Blackeye Peas		1,367		289	12,085
Green Peas		1,568	2,023	143,822	236,267
Peas & Carrots Mixed		93	14	4,840	6,823
Spinach		6,213	179	42,764	75,516
Squash, Summer/Zucchini		6,565	442	27,604	79,084
Southern Greens		9,203	1	791	18,665
Other Vegetables		43,137	5,279	151,866	304,286
Potatoes					
French Fries	2,905	1,637	311,012	484,312	1,098,752
Other Frozen	539	3,985	59,375	89,449	219,196
Meat					
Frozen Beef					
Boneless	2,739	76,561	4,545	55,149	347,292
Beef Cuts	1,216	4,974	3,877	5,432	31,207
Frozen Pork					
Ribs	1,987	2,132	23	835	47,820
Trimnings	532	1,017	53	1,891	41,112
Other	4,794	16,166	414	2,941	73,591
Other					
Veal		192		884	6,587
Lamb & Mutton	1	2,184	1,283	2,231	16,542

¹ East North Central combined with South Atlantic. Mountain and West North Central Combined with West South Central.

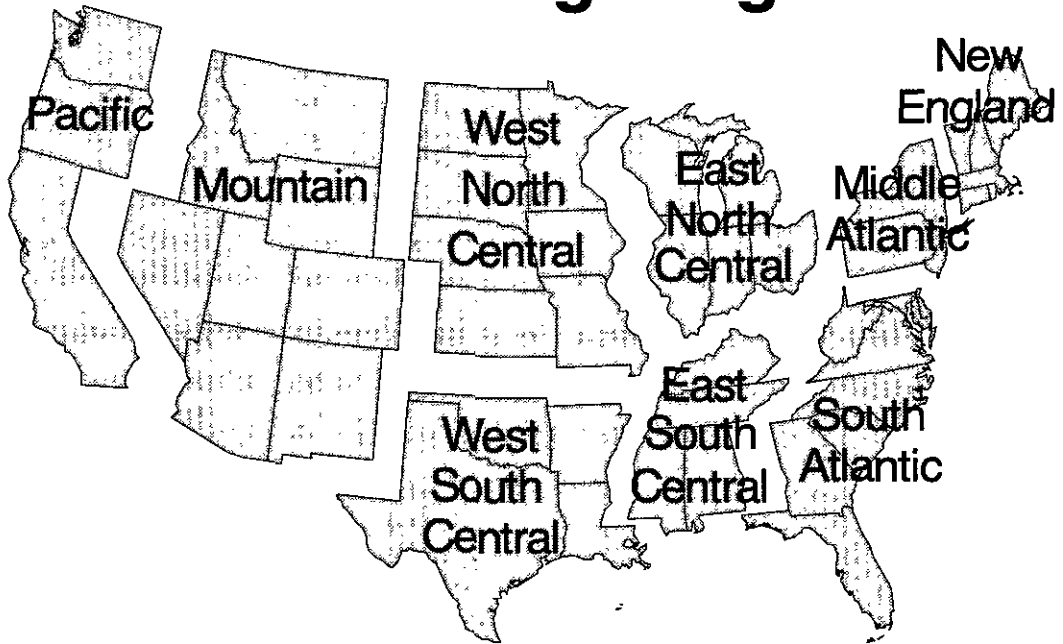
² Middle Atlantic combined with South Atlantic.

³ New England combined with Middle Atlantic. East South Central combined with South Atlantic.

**Public General Warehouses: Cold Storage Space Occupied
by Region and United States, November 1997**

Region	Cooler				Freezer			
	Usable Space	Usable Space Occupied			Usable Space	Usable Space Occupied		
		Nov 30 1997	Nov 30 1996	Oct 31 1997		Nov 30 1997	Nov 30 1996	Oct 31 1997
	<i>1,000 Cu Ft</i>	<i>Percent</i>	<i>Percent</i>	<i>Percent</i>	<i>1,000 Cu Ft</i>	<i>Percent</i>	<i>Percent</i>	<i>Percent</i>
New England	2,415	45	51	54	20,250	37	66	68
Middle Atlantic	34,505	56	71	71	85,253	71	87	87
E. North Central	40,607	55	58	58	171,549	62	65	62
W. North Central	43,711	46	50	49	146,113	50	60	60
South Atlantic	42,457	42	45	45	135,074	60	64	62
E. South Central	9,518	35	47	46	35,210	63	70	68
W. South Central	17,815	23	35	32	114,729	64	73	70
Mountain	5,894	53	51	47	45,705	66	71	73
Pacific	44,980	46	41	39	244,046	76	81	81
US	241,902	46	51	50	997,929	64	71	70

Cold Storage Regions



**Apples in Cold Storage: By State
and United States, November 1997**

State	All Warehouses		
	Nov 30, 1996	Oct 31, 1997	Nov 30, 1997
	<i>1,000 Pounds</i>	<i>1,000 Pounds</i>	<i>1,000 Pounds</i>
CA	166,339	261,568	170,756
MI	311,766	444,738	459,102
N ENG	78,905	110,463	93,884
NY	341,670	372,708	389,718
OH	13,410	24,050	24,050
OR	55,614	54,539	41,571
PA	229,362	292,614	259,177
VA	140,669	190,945	190,358
WA	3,790,232	3,619,602	3,275,034
WV	66,461	78,602	74,225
Other States	212,626	251,212	193,576
US	5,407,054	5,701,041	5,171,451

Survey Procedures: Questionnaires are mailed about the 24th of each month to all operators on the list of approximately 1,400 public and private cold storage warehouses. In addition, apple data are obtained from special surveys and other sources (State Departments of Agriculture, U.S. Apple Association, etc.). All survey data represent stocks as of the end of the month.

Data are collected from warehouses artificially cooled to a temperature of 50 degrees Fahrenheit or lower, and whose food products are normally stored for 30 days or more. All food items in these facilities are reported regardless of the number of days stored at the time of the report. Also included are specialized storage facilities meeting the 30 day requirement, such as fruit houses, dairy manufacturing plants, frozen fruit, fruit juice, and vegetable processors, and poultry and meat packing plants. Excluded are stocks in space maintained by wholesalers, jobbers, distributors, chain stores, locker plants containing individual lockers, meat packer branch houses, and frozen food processors whose entire inventories are turned over more than once a month.

Estimating Procedures: Data for reporting firms are added to estimates for non-reporting firms to obtain regional and National totals. Estimates for non-reporting firms are obtained by multiplying the previous month's figure by a percent change from the previous month. The percent change is calculated for each item from totals of the current and previous month summed from firms that reported both months.

Revision Policy: Data are revised the following month based on late reports or corrected data. Final figures are published in the annual summary in February of the following year.

Reliability: Reports are received from 900 firms each month which represent about 70 percent of the total capacity. Firms that are not on the list or firms who have never reported are not represented in the data. Monthly data can vary due to different firms reporting month to month. Survey data are also subject to non-sampling errors such as omissions and mistakes in reporting and in processing the data. While these errors cannot be measured directly, they are minimized by carefully reviewing all reported data for consistency and reasonableness.

The next "Cold Storage" report will be released at 3 p.m. ET on January 21, 1998.

The United States Department of Agriculture (USDA) prohibits discrimination in its programs on the basis of race, color, national origin, sex, religion, age, disability, political beliefs, and marital or familial status. Persons with disabilities who require alternative means for communication of program information (braille, large print, audiotape, etc.) should contact the USDA's TARGET Center at 202-720-2600 (voice and TDD).

To file a complaint, write the Secretary of Agriculture, USDA, Washington, D.C., 20250, or call 1-800-245-6340 (voice) or 202-720-1127 (TDD). USDA is an equal employment opportunity employer.

ACCESS TO REPORTS!!

For your convenience, there are several ways to obtain NASS reports, data products, and services:

INTERNET ACCESS

All NASS reports are available free of charge on the worldwide Internet. For access, connect to the Internet and go to the NASS Home Page at: <http://www.usda.gov/nass/>. Select "Today's Reports" or Publications and then Reports by Calendar or Publications and then Search, by Title or Subject.

E-MAIL SUBSCRIPTION

All NASS reports are available by subscription free of charge direct to your e-mail address. Send an e-mail message to: usda-reports@usda.mannlib.cornell.edu. In the body of the message type the word: **list**.

AUTOFAX ACCESS

NASSFax service is available for some reports from your fax machine. Please call 202-720-2000, using the handset attached to your fax. Respond to the voice prompts. Document 0411 is a list of available reports.

PRINTED REPORTS OR DATA PRODUCTS

CALL OUR TOLL-FREE ORDER DESK: 800-999-6779 (U.S. and Canada)
Other areas, please call 703-834-0125 FAX: 703-834-0110
(Visa, MasterCard, check, or money order acceptable for payment.)

ASSISTANCE

For assistance with general agricultural statistics or further information about NASS or its products or services, contact the Agricultural Statistics Hotline at 800-727-9540, 7:30 a.m. to 4:00 p.m. ET, or e-mail: nass@nass.usda.gov.

