

Cold Storage



USDA
Washington, D.C.

Released February 19, 1999, by the National Agricultural Statistics Service (NASS), Agricultural Statistics Board, U.S. Department of Agriculture. For information on "Cold Storage" call Linda Simpson at (202) 720-8784, office hours 7:00 a.m. to 4:30 p.m. ET.

Frozen food stocks in refrigerated warehouses on January 31, 1999, were greater than year earlier levels for butter, pork, concentrated orange juice, chicken, potatoes, and vegetables. Cooler stocks of peanuts, apples, and natural cheese were higher than a year earlier.

Total red meat supplies in freezers were up 2 percent from December 1998 and were 4 percent above January 1998. Frozen pork stocks were 3 percent above last month and were up 16 percent from last year. Stocks of pork bellies increased 13 percent from last month and were 48 percent above a year ago.

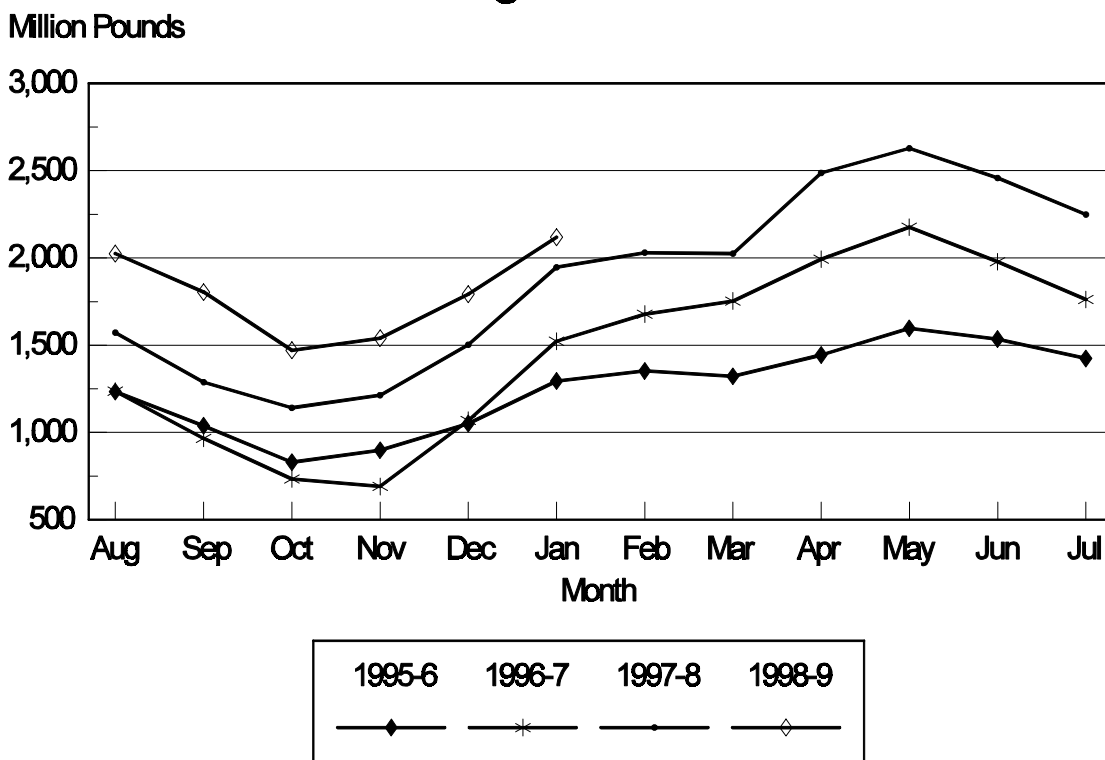
Total frozen poultry supplies were up 6 percent from last month, but were down 6 percent from last year's level. Total stocks of chicken were unchanged from last month but were 8 percent above January 1998. Total pounds of turkey in freezers increased 20 percent from last month and were 27 percent below last year.

Public cooler occupancy was at 54 percent of capacity, up 4 points from a year ago. Public freezer occupancy at 65 percent was down 1 point from both last month and last year.

Table of Contents

	Page
Stocks in Cold Storage: By Commodity, United States, January 1999	3
Stocks in Cold Storage: By Commodity, Region, and United States, December 31, 1998	6
Stocks in Cold Storage: By Commodity, Region, and United States, January 31, 1999	10
Public General Warehouses: Cold Storage Space Occupied by Region and United States, January 1999	14
Apples in Cold Storage: By State and United States, January 1999	15
Survey and Estimating Procedures, Revision Policy and Reliability	16

Orange Juice Concentrate Cold Storage Stocks, 1995-1999



**Stocks in Cold Storage: By Commodity,
United States, January 1999**

Commodity	Stocks in All Warehouses			Percent of		Public Warehouse Stocks
	Jan 31, 1998	Dec 31, 1998	Jan 31, 1999	Jan 1998	Dec 1998	Jan 31, 1999
	<i>1,000 Pounds</i>	<i>1,000 Pounds</i>	<i>1,000 Pounds</i>	<i>Percent</i>	<i>Percent</i>	<i>1,000 Lbs</i>
Fresh Fruit						
Apples						
Regular Storage	606,302	1,039,507	563,368	93	54	
Controlled Atmosphere	3,122,302	3,968,949	3,605,641	115	91	
Total	3,728,604	5,008,456	4,169,009	112	83	20,551
Pears						
Bartlett	6,571	5,427	758	12	14	
Other Varieties	266,302	305,931	236,504	89	77	
Total	272,873	311,358	237,262	87	76	17
Nuts						
Shelled						
Peanuts	304,085	363,964	420,874	138	116	
Pecans	28,866	20,937	22,842	79	109	
Other Shelled	121,127	98,371	130,964	108	133	
Total	454,078	483,272	574,680	127	119	283,692
In-Shell						
Peanuts	20,644	17,187	16,933	82	99	
Pecans	168,274	90,637	122,833	73	136	
Other In-Shell	7,684	7,416	7,177	93	97	
Total	196,602	115,240	146,943	75	128	52,576
Dairy Products						
Butter, Total	34,166	25,910	58,430	171	226	54,197
(Government Owned)	160	4	247	154		
Natural Cheese						
American, Total	406,958	407,692	411,320	101	101	
(Government Owned)	103	120	10	10	8	
Swiss	14,380	11,838	11,916	83	101	
Other Natural Cheese	87,985	97,685	98,496	112	101	
Total	509,323	517,215	521,732	102	101	303,514
Eggs, Frozen						
Whites	843	1,247	1,174	139	94	
Yolks	1,240	1,028	801	65	78	
Whole & Mixed	9,058	8,107	8,412	93	104	
Unclassified	908	652	746	82	114	
Total	12,049	11,034	11,133	92	101	10,585
Frozen Poultry						
Chicken						
Broilers (Whole)	24,683	18,630	21,690	88	116	
Hens	5,546	6,256	7,576	137	121	
Other Chicken	628,043	692,463	684,894	109	99	
Total	658,272	717,349	714,160	108	100	
Turkey						
Whole Turkeys	228,445	105,819	147,073	64	139	
Other Turkey	269,138	198,490	218,572	81	110	
Total	497,583	304,309	365,645	73	120	
Ducks	2,286	3,757	4,092	179	109	
Total	1,158,141	1,025,415	1,083,897	94	106	983,852

**Stocks in Cold Storage: By Commodity,
United States, January 1999 (Continued)**

Commodity	Stocks in All Warehouses			Percent of		Public Warehouse Stocks
	Jan 31, 1998	Dec 31, 1998	Jan 31, 1999	Jan 1998	Dec 1998	Jan 31, 1999
	<i>1,000 Pounds</i>	<i>1,000 Pounds</i>	<i>1,000 Pounds</i>	<i>Percent</i>	<i>Percent</i>	<i>1,000 Lbs</i>
Frozen Fruit						
Apples	71,372	66,392	73,115	102	110	
Apricots	11,496	11,559	10,026	87	87	
Blackberries, Total	23,239	22,071	19,371	83	88	
IQF	12,632	12,394	10,902	86	88	
Pails and Tubs	2,942	2,607	2,789	95	107	
Barrels, 400 lbs net	6,193	5,555	4,212	68	76	
Concentrate	1,472	1,515	1,468	100	97	
Blueberries	83,353	67,443	60,054	72	89	
Boysenberries	4,833	4,506	3,660	76	81	
Cherries, Tart (RSP)	127,244	122,205	109,891	86	90	
Cherries, Tart (Juice)	3,652	3,225	3,707	102	115	
Cherries, Sweet	14,380	16,208	15,043	105	93	
Grapes	2,633	5,444	5,183	197	95	
Peaches	60,369	72,867	61,280	102	84	
Raspberries, Black	566	756	554	98	73	
Raspberries, Red, Total	42,777	40,174	34,626	81	86	
IQF	10,543	10,958	9,184	87	84	
Pails and Tubs	13,405	11,031	9,488	71	86	
Barrels, 400 lbs net	16,900	13,918	12,266	73	88	
Concentrate	1,929	4,267	3,688	191	86	
Strawberries, Total	182,139	201,442	179,824	99	89	
Pkgs. 20 Oz. & Less	58,467		120,122	205		
Pkgs. Over 20 Oz.	123,672		59,702	48		
Other Frozen Fruit	496,421	574,325	526,853	106	92	
Total	1,124,474	1,208,617	1,103,187	98	91	655,664
Frozen Juice						
Orange Juice Conc. ¹	1,945,939	1,791,913	2,118,796	109	118	
(Gallon Equivalent)	196,639	181,074	214,106			
Other Juice Concentrate	453,672	405,954	422,741	93	104	
Total	2,399,611	2,197,867	2,541,537	106	116	282,903
Frozen Vegetables						
Asparagus	5,692	6,162	5,209	92	85	
Limas, Fordhook	15,327	12,049	9,491	62	79	
Limas, Baby	49,950	63,420	57,017	114	90	
Green Beans, Reg. Cut	179,474	172,372	155,148	86	90	
Green Beans, Fr. Style	31,659	41,028	35,655	113	87	
Broccoli, Spears	23,527	24,442	33,049	140	135	
Broccoli, Chopped & Cut	91,980	89,310	85,778	93	96	
Brussels Sprouts	17,418	18,745	20,623	118	110	
Carrots, Diced	74,958	73,555	68,404	91	93	
Carrots, Other	197,572	183,068	162,288	82	89	
Cauliflower	63,652	50,298	52,078	82	104	
Corn, Cut	334,780	403,737	358,368	107	89	
Corn, Cob	247,305	269,578	242,186	98	90	
Mixed Vegetables	47,856	53,020	51,216	107	97	
Okra	46,051	46,567	38,732	84	83	
Onion Rings	9,695	15,752	14,492	149	92	
Onions, Other	28,724	24,596	24,665	86	100	
Blackeye Peas	9,054	8,039	6,665	74	83	
Green Peas	190,227	277,858	247,108	130	89	
Peas & Carrots Mixed	5,859	10,285	8,354	143	81	
Spinach	68,450	69,232	77,270	113	112	
Squash, Summer/Zucchini	70,645	70,272	63,783	90	91	
Southern Greens	26,547	32,765	31,884	120	97	
Other Vegetables	242,399	301,595	291,203	120	97	
Total	2,078,801	2,317,745	2,140,666	103	92	1,350,089

See footnotes at end of table.

--continued

**Stocks in Cold Storage: By Commodity,
United States, January 1999 (Continued)**

Commodity	Stocks in All Warehouses			Percent of		Public Warehouse Stocks
	Jan 31, 1998	Dec 31, 1998	Jan 31, 1999	Jan 1998	Dec 1998	Jan 31, 1999
	<i>1,000 Pounds</i>	<i>1,000 Pounds</i>	<i>1,000 Pounds</i>	<i>Percent</i>	<i>Percent</i>	<i>1,000 Lbs</i>
Potatoes						
French Fries	948,225	897,256	961,590	101	107	
Other Frozen	198,990	254,038	259,592	130	102	
Total	1,147,215	1,151,294	1,221,182	106	106	863,077
Meat						
Frozen Beef						
Boneless	292,194	267,339	262,373	90	98	
Beef Cuts	38,887	29,084	34,341	88	118	
Total	331,081	296,423	296,714	90	100	293,460
(Government Owned)	4,499	3,554	3,979	88	112	
Frozen Pork						
Picnics, Bone-in	15,043	11,960	11,697	78	98	
Hams, Total	70,488	63,684	78,037	111	123	72,968
Bone-in	35,130	30,662	38,986	111	127	37,632
Boneless	35,358	33,022	39,051	110	118	35,336
Bellies	55,249	72,657	81,975	148	113	
Loins, Total	25,382	27,643	29,686	117	107	26,922
Bone-in	13,379	18,792	21,188	158	113	
Boneless	12,003	8,851	8,498	71	96	
Ribs	58,725	75,393	80,635	137	107	
Butts	10,259	15,882	13,060	127	82	
Trimmings	77,443	73,201	67,690	87	92	
Other	82,297	88,577	80,716	98	91	
Variety Meats	37,068	58,867	58,749	158	100	
Unclassified	14,179	15,645	15,545	110	99	
Total	446,133	503,509	517,790	116	103	442,348
(Government Owned)	1,286	1,830	1,718	134	94	
Other						
Veal	6,857	5,407	4,883	71	90	
Lamb & Mutton	13,920	11,721	10,524	76	90	
Total	20,777	17,128	15,407	74	90	15,332
Canned						
Canned Hams	4,061	3,378	5,050	124	149	
Other Canned Meat	732	610	765	105	125	
Total	4,793	3,988	5,815	121	146	3,291
Total	802,784	821,048	835,726	104	102	754,431
Miscellaneous						
Cooler	752,836	816,023	839,157	111	103	496,728
Freezer	1,819,844	2,020,527	2,048,370	113	101	1,976,419
Total	2,572,680	2,836,550	2,887,527	112	102	2,473,147
Commodities						
Stored in Coolers	5,919,109	7,255,552	6,494,598	110	90	1,160,369
Stored in Freezers	10,572,292	10,775,469	11,038,313	104	102	6,927,926
Total	16,491,401	18,031,021	17,532,911	106	97	8,088,295

¹ Adjusted to 42.0 degrees Brix equivalent (9.896 pounds per gallon).

**Stocks in Cold Storage: By Commodity, Region,
and United States, December 31, 1998**

Commodity	New England	Middle Atlantic	East North Central	West North Central	South Atlantic
	<i>1,000 Pounds</i>	<i>1,000 Pounds</i>	<i>1,000 Pounds</i>	<i>1,000 Pounds</i>	<i>1,000 Pounds</i>
Total Fresh Apples	33,640	466,589	369,462	655	259,043
Nuts					
Shelled					
Peanuts		3	115	23	210,062
Pecans ¹		83			7,217
In-Shell					
Pecans ¹		32			14,111
Dairy Products					
Natural Cheese					
American, Total	22,882	43,037	212,990	54,698	778
Other Natural Cheese	268	6,684	78,572	3,620	681
Frozen Poultry					
Broilers (Whole)	63	326	329	708	7,247
Hens	40	455	453	655	763
Other Chicken	1,764	4,617	11,324	33,723	205,055
Total	1,867	5,398	12,106	35,086	213,065
Whole Turkeys	1,222	6,963	5,980	17,102	23,421
Other Turkey	590	11,478	20,447	57,486	51,256
Total	1,812	18,441	26,427	74,588	74,677
Ducks	24	164	3,388	23	37
Total	3,703	24,003	41,921	109,697	287,779
Frozen Fruit					
Apples	32	20,968	26,898	110	1,088
Blueberries	8,758	9,496	28,758	371	2,634
Cherries, Tart (RSP)	92	5,375	100,308	109	419
Cherries, Sweet		927	9,336	130	58
Peaches	88	2,721	3,392	616	432
Raspberries, Red	388	2,221	723	1,817	116
Strawberries, Total	87	1,614	5,122	3,130	1,029
Other Frozen Fruit	157,768	41,956	265,446	553	1,068

See footnotes at end of table.

--continued

**Stocks in Cold Storage: By Commodity, Region,
and United States, December 31, 1998 (continued)**

Commodity	East South Central	West South Central	Mountain	Pacific	US Total
	<i>1,000 Pounds</i>	<i>1,000 Pounds</i>	<i>1,000 Pounds</i>	<i>1,000 Pounds</i>	<i>1,000 Pounds</i>
Total Fresh Apples		2,912	106,277	3,769,878	5,008,456
Nuts					
Shelled					
Peanuts	38,097	115,250	183	231	363,964
Pecans ¹	752	12,785		100	20,937
In-Shell					
Pecans ¹	2,439	74,055			90,637
Dairy Products					
Natural Cheese					
American, Total	204	295	14,489	58,319	407,692
Other Natural Cheese	301	198	748	6,613	97,685
Frozen Poultry					
Broilers (Whole)	1,419	5,684	187	2,667	18,630
Hens	2,831	206	64	789	6,256
Other Chicken	129,434	274,099	3,503	28,944	692,463
Total	133,684	279,989	3,754	32,400	717,349
Whole Turkeys	1,014	20,352	14,561	15,204	105,819
Other Turkey	363	26,692	4,415	25,763	198,490
Total	1,377	47,044	18,976	40,967	304,309
Ducks	2	39	1	79	3,757
Total	135,063	327,072	22,731	73,446	1,025,415
Frozen Fruit					
Apples	147	1,831	181	15,137	66,392
Blueberries	127	762	529	16,008	67,443
Cherries, Tart (RSP)	79	377	8,246	7,200	122,205
Cherries, Sweet	8	321	1,525	3,903	16,208
Peaches	131	1,285	113	64,089	72,867
Raspberries, Red	197	415	61	34,236	40,174
Strawberries, Total	3,047	8,352	943	178,118	201,442
Other Frozen Fruit	433	10,394	1,639	95,068	574,325

See footnotes at end of table.

--continued

**Stocks in Cold Storage: By Commodity, Region,
and United States, December 31, 1998 (continued)**

Commodity	New England	Middle Atlantic	East North Central	West North Central	South Atlantic
	<i>1,000 Pounds</i>	<i>1,000 Pounds</i>	<i>1,000 Pounds</i>	<i>1,000 Pounds</i>	<i>1,000 Pounds</i>
Frozen Juice					
Orange Juice Conc. ²	17		2,938	1,227	1,717,635
Other Juice Concentrate	1,168	23,216	21,743	1,713	149,830
Frozen Vegetables ³					
Asparagus		159	2,895	24	207
Limas, Fordhook		296	605	212	1,578
Limas, Baby		3,480	1,543	789	20,668
Green Beans, Reg. Cut		35,626	39,994	1,489	8,081
Green Beans, Fr. Style		9,902	7,757	327	750
Broccoli, Spears		1,897	157	870	1,670
Broccoli, Chopped & Cut		4,109	5,298	4,687	6,905
Brussels Sprouts		339	302	392	575
Carrots, Diced		4,472	17,394	1,095	4,962
Carrots, Other		10,295	11,295	3,727	11,262
Cauliflower		1,945	2,734	1,004	1,168
Corn, Cut		35,555	42,659	28,409	17,315
Corn, Cob		14,061	9,421	23,530	6,211
Mixed Vegetables		2,278	4,482	1,638	5,092
Okra		547	145	1,382	24,947
Onion Rings		907	9,285	1,308	974
Onions, Other		1,711	2,727	430	2,000
Blackeye Peas		310	265	7	5,922
Green Peas		25,995	27,718	13,916	15,317
Peas & Carrots Mixed		545	503	53	589
Spinach		10,811	1,248	1,480	5,182
Squash, Summer/Zucchini		2,495	21,477	328	15,932
Southern Greens		3,559	28	9	16,791
Other Vegetables		26,422	29,208	10,299	29,778
Potatoes					
French Fries	32,063	20,054	56,342	102,024	20,415
Other Frozen	5,932	23,813	33,451	7,865	4,728
Meat					
Frozen Beef					
Boneless	7,192	26,520	31,431	58,096	23,003
Beef Cuts	1,929	1,175	3,286	3,991	645
Frozen Pork					
Ribs	522	1,725	29,376	31,771	6,132
Trimming	573	4,319	14,982	33,786	13,587
Other	3,953	5,390	19,513	26,452	6,369
Other					
Veal	305	892	2,441	508	90
Lamb & Mutton	537	3,582	1,544	1,383	1,379

See footnotes at end of table.

--continued

**Stocks in Cold Storage: By Commodity, Region,
and United States, December 31, 1998 (continued)**

Commodity	East South Central	West South Central	Mountain	Pacific	US Total
	<i>1,000 Pounds</i>	<i>1,000 Pounds</i>	<i>1,000 Pounds</i>	<i>1,000 Pounds</i>	<i>1,000 Pounds</i>
Frozen Juice					
Orange Juice Concentrate	88	2,812	3,383	63,813	1,791,913
Other Juice Concentrate	1,030	12,899	356	193,999	405,954
Frozen Vegetables ³					
Asparagus		283		2,594	6,162
Limas, Fordhook		102	301	8,955	12,049
Limas, Baby		678	5,863	30,399	63,420
Green Beans, Reg. Cut		1,558	86	85,538	172,372
Green Beans, Fr. Style		333	58	21,901	41,028
Broccoli, Spears		8,508	102	11,238	24,442
Broccoli, Chopped & Cut		20,193	305	47,813	89,310
Brussels Sprouts		414	4	16,719	18,745
Carrots, Diced		990	193	44,449	73,555
Carrots, Other		13,046	247	133,196	183,068
Cauliflower		7,815	41	35,591	50,298
Corn, Cut		4,265	229	275,305	403,737
Corn, Cob		2,169	1,931	212,255	269,578
Mixed Vegetables		8,472	126	30,932	53,020
Okra		19,064		482	46,567
Onion Rings		1,206	229	1,843	15,752
Onions, Other		1,260	2,173	14,295	24,596
Blackeye Peas		1,403		132	8,039
Green Peas		2,153	13,403	179,356	277,858
Peas & Carrots Mixed		199	13	8,383	10,285
Spinach		8,831	729	40,951	69,232
Squash, Summer/Zucchini		7,558	289	22,193	70,272
Southern Greens		11,788		590	32,765
Other Vegetables		46,149	4,395	155,344	301,595
Potatoes					
French Fries	1,407	26,686	261,664	376,601	897,256
Other Frozen	120	5,896	64,245	107,988	254,038
Meat					
Frozen Beef					
Boneless	5,140	59,792	6,644	49,521	267,339
Beef Cuts	700	7,767	6,886	2,705	29,084
Frozen Pork					
Ribs	2,452	1,748	36	1,631	75,393
Trimmings	862	2,966	366	1,760	73,201
Other	4,027	18,833	358	3,682	88,577
Other					
Veal	25	653		493	5,407
Lamb & Mutton		669	750	1,877	11,721

¹ East North Central combined with South Atlantic. Mountain and West North Central combined with West South Central.

² Middle Atlantic combined with South Atlantic.

³ New England combined with Middle Atlantic. East South Central combined with South Atlantic.

**Stocks in Cold Storage: By Commodity, Region,
and United States, January 31, 1999**

Commodity	New England	Middle Atlantic	East North Central	West North Central	South Atlantic
	<i>1,000 Pounds</i>	<i>1,000 Pounds</i>	<i>1,000 Pounds</i>	<i>1,000 Pounds</i>	<i>1,000 Pounds</i>
Total Fresh Apples	24,552	420,511	255,413	135	196,929
Nuts					
Shelled					
Peanuts		39	121	27	235,630
Pecans ¹		86			7,935
In-Shell					
Pecans ¹		41			15,227
Dairy Products					
Natural Cheese					
American, Total	23,645	43,780	218,075	58,210	826
Other Natural Cheese	297	6,783	79,750	3,608	599
Frozen Poultry					
Broilers (Whole)	70	278	342	763	7,841
Hens	41	524	75	721	1,191
Other Chicken	1,729	5,440	12,466	36,585	199,384
Total	1,840	6,242	12,883	38,069	208,416
Whole Turkeys	1,084	9,461	6,829	25,718	34,610
Other Turkey	524	10,956	20,461	60,815	56,335
Total	1,608	20,417	27,290	86,533	90,945
Ducks	34	423	3,468	23	40
Total	3,482	27,082	43,641	124,625	299,401
Frozen Fruit					
Apples	32	24,186	30,439	114	1,609
Blueberries	8,158	8,384	25,666	317	2,458
Cherries, Tart (RSP)	83	5,151	90,510	100	377
Cherries, Sweet		991	8,909	96	63
Peaches	74	2,928	2,942	529	408
Raspberries, Red	405	1,987	591	1,526	121
Strawberries, Total	80	3,311	4,638	3,044	1,178
Other Frozen Fruit	142,490	38,484	239,255	432	1,640

See footnotes at end of table.

--continued

**Stocks in Cold Storage: By Commodity, Region,
and United States, January 31, 1999 (continued)**

Commodity	East South Central	West South Central	Mountain	Pacific	US Total
	<i>1,000 Pounds</i>	<i>1,000 Pounds</i>	<i>1,000 Pounds</i>	<i>1,000 Pounds</i>	<i>1,000 Pounds</i>
Total Fresh Apples		553	80,333	3,190,583	4,169,009
Nuts					
Shelled					
Peanuts	48,807	135,790	186	274	420,874
Pecans ¹	1,036	13,691		94	22,842
In-Shell					
Pecans ¹	2,254	105,304		7	122,833
Dairy Products					
Natural Cheese					
American, Total	212	504	12,191	53,877	411,320
Other Natural Cheese	289	223	615	6,332	98,496
Frozen Poultry					
Broilers (Whole)	2,448	6,466	263	3,219	21,690
Hens	2,813	729	66	1,416	7,576
Other Chicken	126,483	270,329	3,631	28,847	684,894
Total	131,744	277,524	3,960	33,482	714,160
Whole Turkeys	1,068	32,000	13,029	23,274	147,073
Other Turkey	496	35,567	5,760	27,658	218,572
Total	1,564	67,567	18,789	50,932	365,645
Ducks	2	19	1	82	4,092
Total	133,310	345,110	22,750	84,496	1,083,897
Frozen Fruit					
Apples	124	1,720	189	14,702	73,115
Blueberries	134	829	520	13,588	60,054
Cherries, Tart (RSP)	75	420	7,415	5,760	109,891
Cherries, Sweet	6	360	889	3,729	15,043
Peaches	99	1,400	87	52,813	61,280
Raspberries, Red	132	319	26	29,519	34,626
Strawberries, Total	2,592	9,805	641	154,535	179,824
Other Frozen Fruit	401	12,413	1,803	89,935	526,853

See footnotes at end of table.

--continued

**Stocks in Cold Storage: By Commodity, Region,
and United States, January 31, 1999 (continued)**

Commodity	New England	Middle Atlantic	East North Central	West North Central	South Atlantic
	<i>1,000 Pounds</i>	<i>1,000 Pounds</i>	<i>1,000 Pounds</i>	<i>1,000 Pounds</i>	<i>1,000 Pounds</i>
Frozen Juice					
Orange Juice Conc. ²	34		3,436	555	2,034,251
Other Juice Concentrate	1,356	23,093	22,059	1,893	162,933
Frozen Vegetables ³					
Asparagus		154	2,389	30	224
Limas, Fordhook		282	553	155	1,401
Limas, Baby		3,321	1,602	679	18,476
Green Beans, Reg. Cut		32,642	35,335	1,423	7,612
Green Beans, Fr. Style		7,870	7,286	295	661
Broccoli, Spears		1,955	131	1,972	2,083
Broccoli, Chopped & Cut		4,075	5,001	4,739	7,407
Brussels Sprouts		368	350	416	725
Carrots, Diced		4,085	16,103	970	4,473
Carrots, Other		10,037	10,521	3,391	10,968
Cauliflower		1,954	2,773	1,166	1,527
Corn, Cut		28,463	38,699	24,785	15,125
Corn, Cob		13,732	8,512	20,996	6,660
Mixed Vegetables		2,176	3,960	1,502	5,102
Okra		767	160	1,372	19,055
Onion Rings		865	8,344	1,285	786
Onions, Other		1,984	2,883	399	1,684
Blackeye Peas		258	240	13	4,985
Green Peas		21,593	24,436	12,049	13,524
Peas & Carrots Mixed		423	412	64	637
Spinach		9,760	1,329	1,197	5,889
Squash, Summer/Zucchini		2,430	19,183	369	14,698
Southern Greens		2,986	26	17	19,532
Other Vegetables		26,233	28,280	9,006	33,198
Potatoes					
French Fries	31,787	20,398	52,967	104,992	19,321
Other Frozen	5,426	22,409	38,813	7,737	6,271
Meat					
Frozen Beef					
Boneless	7,122	28,840	30,441	60,006	22,735
Beef Cuts	1,791	1,796	3,690	4,329	785
Frozen Pork					
Ribs	589	2,242	34,402	30,044	7,015
Trimnings	486	1,814	15,461	32,586	11,509
Other	3,858	5,329	17,369	22,522	5,257
Other					
Veal	274	885	2,317	499	72
Lamb & Mutton	490	3,260	1,126	928	1,126

See footnotes at end of table.

--continued

**Stocks in Cold Storage: By Commodity, Region,
and United States, January 31, 1999 (continued)**

Commodity	East South Central	West South Central	Mountain	Pacific	US Total
	<i>1,000 Pounds</i>	<i>1,000 Pounds</i>	<i>1,000 Pounds</i>	<i>1,000 Pounds</i>	<i>1,000 Pounds</i>
Frozen Juice					
Orange Juice Concentrate	106	3,347	3,935	73,132	2,118,796
Other Juice Concentrate	915	11,971	301	198,220	422,741
Frozen Vegetables ³					
Asparagus		269		2,143	5,209
Limas, Fordhook		80	217	6,803	9,491
Limas, Baby		670	4,667	27,602	57,017
Green Beans, Reg. Cut		1,127	91	76,918	155,148
Green Beans, Fr. Style		278	48	19,217	35,655
Broccoli, Spears		12,998	110	13,800	33,049
Broccoli, Chopped & Cut		19,072	856	44,628	85,778
Brussels Sprouts		341	4	18,419	20,623
Carrots, Diced		816	165	41,792	68,404
Carrots, Other		7,658	250	119,463	162,288
Cauliflower		11,010	26	33,622	52,078
Corn, Cut		3,956	148	247,192	358,368
Corn, Cob		2,331	1,648	188,307	242,186
Mixed Vegetables		8,520	118	29,838	51,216
Okra		16,894		484	38,732
Onion Rings		1,164	219	1,829	14,492
Onions, Other		903	2,203	14,609	24,665
Blackeye Peas		1,025		144	6,665
Green Peas		1,943	11,567	161,996	247,108
Peas & Carrots Mixed		164	18	6,636	8,354
Spinach		13,837	1,255	44,003	77,270
Squash, Summer/Zucchini		6,081	330	20,692	63,783
Southern Greens		8,771		552	31,884
Other Vegetables		38,973	3,818	151,695	291,203
Potatoes					
French Fries	1,397	24,803	289,137	416,788	961,590
Other Frozen	121	6,047	61,026	111,742	259,592
Meat					
Frozen Beef					
Boneless	3,194	53,518	6,664	49,853	262,373
Beef Cuts	795	9,303	3,823	8,029	34,341
Frozen Pork					
Ribs	2,288	2,153	69	1,833	80,635
Trimmings	871	3,191	221	1,551	67,690
Other	3,718	18,564	352	3,747	80,716
Other					
Veal	20	338		478	4,883
Lamb & Mutton		749	848	1,997	10,524

¹ East North Central combined with South Atlantic. Mountain and West North Central Combined with West South Central.

² Middle Atlantic combined with South Atlantic.

³ New England combined with Middle Atlantic. East South Central combined with South Atlantic.

**Public General Warehouses: Cold Storage Space Occupied
by Region and United States, January 1999**

Region	Cooler				Freezer			
	Usable Space	Usable Space Occupied			Usable Space	Usable Space Occupied		
	Jan 31 1999	Jan 31 1998	Dec 31 1998	Jan 31 1999	Jan 31 1999	Jan 31 1998	Dec 31 1998	Jan 31 1999
	<i>1,000 Cu Ft</i>	<i>Percent</i>	<i>Percent</i>	<i>Percent</i>	<i>1,000 Cu Ft</i>	<i>Percent</i>	<i>Percent</i>	<i>Percent</i>
New England	2,415	52	62	58	20,250	66	80	76
Middle Atlantic	34,457	65	80	80	90,651	81	80	79
E. North Central	48,885	56	54	52	174,978	61	64	61
W. North Central	45,778	50	47	47	149,115	59	61	60
South Atlantic	45,673	44	48	50	158,868	64	54	54
E. South Central	8,623	57	46	49	55,572	62	59	58
W. South Central	19,434	38	43	46	129,628	70	67	68
Mountain	5,894	58	90	86	47,055	64	66	68
Pacific	35,081	41	45	45	242,744	70	73	70
US	246,240	50	54	54	1,068,861	66	66	65

Cold Storage Regions



**Apples in Cold Storage: By State
and United States, January 1999**

State	All Warehouses		
	Jan 31, 1998	Dec 31, 1998	Jan 31, 1999
	<i>1,000 Pounds</i>	<i>1,000 Pounds</i>	<i>1,000 Pounds</i>
CA	91,514	132,843	95,783
MI	289,519	347,729	241,038
N ENG	65,316	33,640	24,552
NY	306,684	281,232	258,720
OH	8,740	12,420	9,160
OR	24,317	39,210	30,583
PA	200,337	185,094	161,742
VA	159,205	164,657	127,417
WA	2,428,886	3,597,825	3,064,218
WV	50,780	53,965	43,997
Other States	103,306	159,841	111,799
US	3,728,604	5,008,456	4,169,009

Survey Procedures: Questionnaires are mailed about the 24th of each month to all operators on the list of approximately 1,400 public and private cold storage warehouses. In addition, apple data are obtained from special surveys and other sources (State Departments of Agriculture, U.S. Apple Association, etc.). All survey data represent stocks as of the end of the month.

Data are collected from warehouses artificially cooled to a temperature of 50 degrees Fahrenheit or lower, and whose food products are normally stored for 30 days or more. All food items in these facilities are reported regardless of the number of days stored at the time of the report. Also included are specialized storage facilities meeting the 30 day requirement, such as fruit houses, dairy manufacturing plants, frozen fruit, fruit juice, and vegetable processors, and poultry and meat packing plants. Excluded are stocks in space maintained by wholesalers, jobbers, distributors, chain stores, locker plants containing individual lockers, meat packer branch houses, and frozen food processors whose entire inventories are turned over more than once a month.

Estimating Procedures: Data for reporting firms are added to estimates for non-reporting firms to obtain regional and National totals. Estimates for non-reporting firms are obtained by multiplying the previous month's figure by a percent change from the previous month. The percent change is calculated for each item from totals of the current and previous month summed from firms that reported both months.

Revision Policy: Data are revised the following month based on late reports or corrected data. Final figures are published in the annual summary in February of the following year.

Reliability: Reports are received from 900 firms each month which represent about 70 percent of the total capacity. Firms that are not on the list or firms who have never reported are not represented in the data. Monthly data can vary due to different firms reporting month to month. Survey data are also subject to non-sampling errors such as omissions and mistakes in reporting and in processing the data. While these errors cannot be measured directly, they are minimized by carefully reviewing all reported data for consistency and reasonableness.

The next "Cold Storage" report will be released at 3 p.m. ET on March 19, 1999.

The United States Department of Agriculture (USDA) prohibits discrimination in all its programs on the basis of race, color, national origin, gender, religion, age, disability, political beliefs, sexual orientation, and marital or family status. (Not all prohibited bases apply to all programs.) Persons with disabilities who require alternative means for communication of program information (braille, large print, audiotape, etc.) should contact the USDA's TARGET Center at 202-720-2600 (voice and TDD).

To file a complaint of discrimination, write USDA, Director, Office of Civil Rights, Room 326-W, Whitten Building, 14th and Independence Avenue, SW, Washington, D.C., 20250-9410, or call 202-720-5964 (voice or TDD). USDA is an equal opportunity provider and employer.

ACCESS TO REPORTS!!

For your convenience, there are several ways to obtain NASS reports, data products, and services:

INTERNET ACCESS

All NASS reports are available free of charge on the worldwide Internet. For access, connect to the Internet and go to the NASS Home Page at: <http://www.usda.gov/nass/>. Select "Today's Reports" or Publications and then Reports by Calendar or Publications and then Search, by Title or Subject.

E-MAIL SUBSCRIPTION

All NASS reports are available by subscription free of charge direct to your e-mail address. Send an e-mail message to: usda-reports@usda.mannlib.cornell.edu. In the body of the message type the word: **list**.

AUTOFAX ACCESS

NASSFax service is available for some reports from your fax machine. Please call 202-720-2000, using the handset attached to your fax. Respond to the voice prompts. Document 0411 is a list of available reports.

----- PRINTED REPORTS OR DATA PRODUCTS

CALL OUR TOLL-FREE ORDER DESK: 800-999-6779 (U.S. and Canada)
Other areas, please call 703-834-0125 FAX: 703-834-0110
(Visa, MasterCard, check, or money order acceptable for payment.)

ASSISTANCE

For **assistance** with general agricultural statistics or further information about NASS or its products or services, contact the **Agricultural Statistics Hotline** at **800-727-9540**, 7:30 a.m. to 4:00 p.m. ET, or e-mail: nass@nass.usda.gov.
