

# Cold Storage



USDA  
Washington, D.C.

---

Released May 21, 1999, by the National Agricultural Statistics Service (NASS), Agricultural Statistics Board, U.S. Department of Agriculture. For information on "Cold Storage" call Linda Simpson at (202) 720-8784, office hours 7:00 a.m. to 4:30 p.m. ET.

## **Stocks of Pork, Chicken, Concentrated Orange Juice, Vegetables, and Potatoes All Set Record April Highs**

**Frozen food stocks** in refrigerated warehouses on April 30, 1999, were greater than year earlier levels for butter, pork, chicken, concentrated orange juice, vegetables, and potatoes. This was the fifth month in a row that pork exceeded the 500 million pound mark and also a high for the respective month. Likewise, April 1999 stocks of chicken, at 800 million pounds, also broke the previous record April high of 744 million pounds set in 1997. Concentrated orange juice, vegetables and potatoes all set new April record highs. Cooler stocks of peanuts and apples were higher than a year earlier.

**Total red meat supplies** in freezers were up 5 percent from March 1999 and were 10 percent above April 1998. Frozen pork stocks were 6 percent above last month and were up 22 percent from last year. Stocks of pork bellies increased 3 percent from last month and were 87 percent above a year ago.

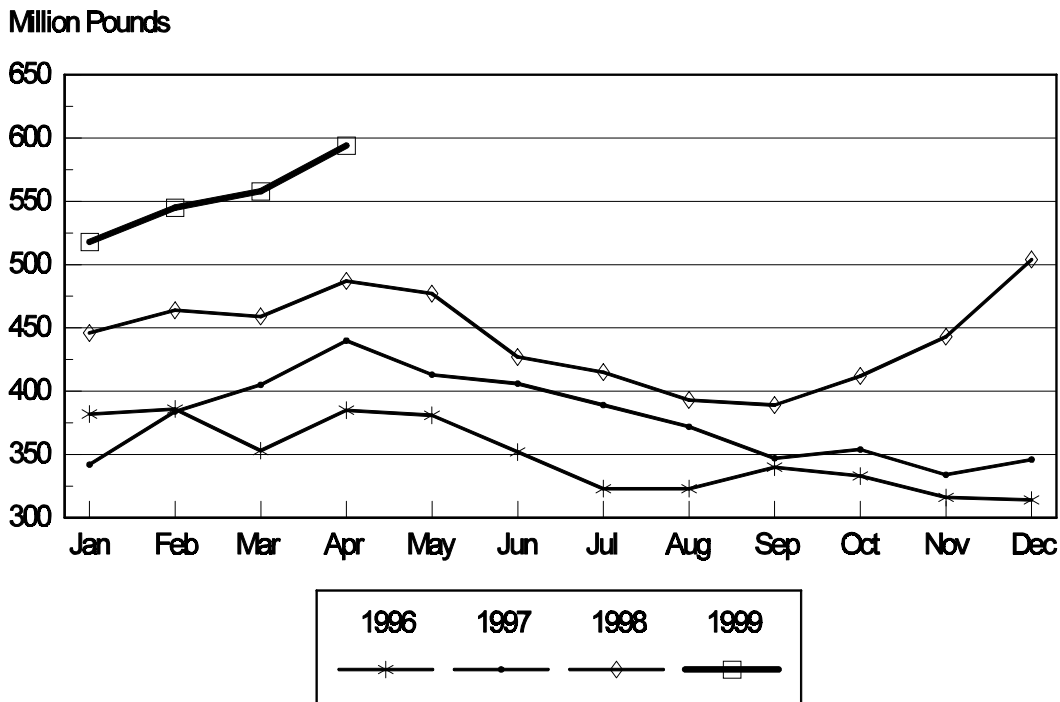
**Total frozen poultry supplies** were up 7 percent from last month, but were down 3 percent from last year's level. Total stocks of chicken were up 2 percent from last month and were 13 percent above April 1998. Total pounds of turkey in freezers increased 20 percent from last month, but were 23 percent below last year.

**Public cooler occupancy** was at 54 percent of capacity, down 1 point from a year ago. Public freezer occupancy at 62 percent was down 2 points from last year.

## Table of Contents

	Page
Stocks in Cold Storage: By Commodity, United States, April 1999 .....	3
Stocks in Cold Storage: By Commodity, Region, and United States, April 30, 1999 .....	6
Stocks in Cold Storage: By Commodity, Region, and United States, April 30, 1999 .....	10
Public General Warehouses: Cold Storage Space Occupied by Region and United States, April 1999 .....	14
Apples in Cold Storage: By State and United States, April 1999 .....	15
Survey and Estimating Procedures, Revision Policy and Reliability .....	16

## Total Frozen Pork-Cold Storage Stocks United States, 1996-1999



**Stocks in Cold Storage: By Commodity,  
United States, April 1999**

Commodity	Stocks in All Warehouses			Percent of		Public Warehouse Stocks
	Apr 30, 1998	Mar 31, 1999	Apr 30, 1999	Apr 1998	Mar 1999	Apr 30, 1999
	<i>1,000 Pounds</i>	<i>1,000 Pounds</i>	<i>1,000 Pounds</i>	<i>Percent</i>	<i>Percent</i>	<i>1,000 Lbs</i>
Fresh Fruit						
Apples						
Regular Storage	105,524	179,216	99,734	95	56	
Controlled Atmosphere	1,520,112	2,428,194	1,758,039	116	72	
Total	1,625,636	2,607,410	1,857,773	114	71	10,748
Pears						
Bartlett	243	2,718	1,500	617	55	
Other Varieties	60,543	117,552	67,698	112	58	
Total	60,786	120,270	69,198	114	58	1,537
Nuts						
Shelled						
Peanuts	424,601	563,425	619,272	146	110	
Pecans	43,195	28,502	28,234	65	99	
Other Shelled	125,221	137,095	160,938	129	117	
Total	593,017	729,022	808,444	136	111	449,335
In-Shell						
Peanuts	20,247	20,728	25,499	126	123	
Pecans	165,381	97,383	75,521	46	78	
Other In-Shell	3,965	10,235	6,949	175	68	
Total	189,593	128,346	107,969	57	84	41,362
Dairy Products						
Butter, Total	67,415	108,917	126,358	187	116	117,446
(Government Owned)	398	181	67	17	37	
Natural Cheese						
American, Total	439,787	406,067	450,565	102	111	
(Government Owned)	171	35	20	12	57	
Swiss	12,581	13,659	12,179	97	89	
Other Natural Cheese	105,252	132,420	130,720	124	99	
Total	557,620	552,146	593,464	106	107	323,144
Eggs, Frozen						
Whites	972	849	660	68	78	
Yolks	1,027	573	646	63	113	
Whole & Mixed	5,347	6,714	6,674	125	99	
Unclassified	1,876	1,102	1,376	73	125	
Total	9,222	9,238	9,356	101	101	8,891
Frozen Poultry						
Chicken						
Broilers (Whole)	21,797	24,968	24,577	113	98	
Hens	5,013	10,915	10,454	209	96	
Other Chicken	680,740	752,029	765,161	112	102	
Total	707,550	787,912	800,192	113	102	
Turkey						
Whole Turkeys	315,803	184,547	232,897	74	126	
Other Turkey	263,861	186,107	211,390	80	114	
Total	579,664	370,654	444,287	77	120	
Ducks	4,313	5,868	6,039	140	103	
Total	1,291,527	1,164,434	1,250,518	97	107	1,152,984

**Stocks in Cold Storage: By Commodity,  
United States, April 1999 (Continued)**

Commodity	Stocks in All Warehouses			Percent of		Public Warehouse Stocks
	Apr 30, 1998	Mar 31, 1999	Apr 30, 1999	Apr 1998	Mar 1999	Apr 30, 1999
	<i>1,000 Pounds</i>	<i>1,000 Pounds</i>	<i>1,000 Pounds</i>	<i>Percent</i>	<i>Percent</i>	<i>1,000 Lbs</i>
Frozen Fruit						
Apples	82,911	91,544	91,643	111	100	
Apricots	8,321	6,137	4,303	52	70	
Blackberries, Total	14,755	13,710	11,160	76	81	
IQF	8,631	8,872	7,043	82	79	
Pails and Tubs	1,459	1,985	1,713	117	86	
Barrels, 400 lbs net	3,613	1,333	1,102	31	83	
Concentrate	1,052	1,520	1,302	124	86	
Blueberries	60,136	48,302	40,055	67	83	
Boysenberries	3,800	3,270	2,906	76	89	
Cherries, Tart (RSP)	78,377	90,917	79,949	102	88	
Cherries, Tart (Juice)	4,270	2,104	3,074	72	146	
Cherries, Sweet	10,845	11,834	10,824	100	91	
Grapes	1,605	3,742	2,983	186	80	
Peaches	37,811	39,303	32,400	86	82	
Raspberries, Black	331	282	206	62	73	
Raspberries, Red, Total	28,777	23,143	19,652	68	85	
IQF	7,808	7,497	7,139	91	95	
Pails and Tubs	8,208	6,583	5,357	65	81	
Barrels, 400 lbs net	11,104	7,071	5,665	51	80	
Concentrate	1,657	1,992	1,491	90	75	
Strawberries, Total	129,014	127,269	126,541	98	99	
Other Frozen Fruit	333,088	449,476	362,697	109	81	
Total	794,041	911,033	788,393	99	87	476,800
Frozen Juice						
Orange Juice Conc. <sup>1</sup>	2,486,974	2,191,322	2,535,904	102	116	
(Gallon Equivalent)	251,311	221,435	256,255			
Other Juice Concentrate	480,732	450,861	457,548	95	101	
Total	2,967,706	2,642,183	2,993,452	101	113	309,400
Frozen Vegetables						
Asparagus	4,432	3,407	3,052	69	90	
Limas, Fordhook	11,498	6,829	6,367	55	93	
Limas, Baby	36,632	48,754	42,312	116	87	
Green Beans, Reg. Cut	102,523	120,681	91,491	89	76	
Green Beans, Fr. Style	21,925	38,735	27,867	127	72	
Broccoli, Spears	25,881	43,389	45,503	176	105	
Broccoli, Chopped & Cut	86,550	122,520	144,127	167	118	
Brussels Sprouts	9,926	16,086	17,574	177	109	
Carrots, Diced	53,771	58,225	61,697	115	106	
Carrots, Other	145,766	147,901	137,223	94	93	
Cauliflower	46,885	49,511	41,622	89	84	
Corn, Cut	193,786	259,811	210,731	109	81	
Corn, Cob	165,354	189,508	157,387	95	83	
Mixed Vegetables	51,951	48,772	51,251	99	105	
Okra	26,410	25,008	22,747	86	91	
Onion Rings	11,816	15,234	14,528	123	95	
Onions, Other	23,443	27,972	33,136	141	118	
Blackeye Peas	7,840	5,934	5,996	76	101	
Green Peas	109,885	180,980	151,275	138	84	
Peas & Carrots Mixed	6,514	9,554	10,084	155	106	
Spinach	91,197	105,346	154,049	169	146	
Squash, Summer/Zucchini	60,918	53,341	52,283	86	98	
Southern Greens	28,392	39,661	38,377	135	97	
Other Vegetables	245,221	238,708	232,437	95	97	
Total	1,568,516	1,855,867	1,753,116	112	94	1,056,053

See footnotes at end of table.

--continued

**Stocks in Cold Storage: By Commodity,  
United States, April 1999 (Continued)**

Commodity	Stocks in All Warehouses			Percent of		Public Warehouse Stocks
	Apr 30, 1998	Mar 31, 1999	Apr 30, 1999	Apr 1998	Mar 1999	Apr 30, 1999
	<i>1,000 Pounds</i>	<i>1,000 Pounds</i>	<i>1,000 Pounds</i>	<i>Percent</i>	<i>Percent</i>	<i>1,000 Lbs</i>
Potatoes						
French Fries	970,306	1,014,544	980,838	101	97	
Other Frozen	254,786	264,235	264,981	104	100	
Total	1,225,092	1,278,779	1,245,819	102	97	874,854
Meat						
Frozen Beef						
Boneless <sup>2</sup>	298,459	269,821	275,884	92	102	
Beef Cuts <sup>3</sup>	36,991	39,583	41,141	111	104	
Total	335,450	309,404	317,025	95	102	313,527
(Government Owned)	2,559	4,235	3,768	147	89	
Frozen Pork						
Picnics, Bone-in	14,982	8,568	8,896	59	104	
Hams, Total	79,773	76,204	92,047	115	121	88,890
Bone-in	41,915	39,655	61,848	148	156	60,804
Boneless <sup>4</sup>	37,858	36,549	30,199	80	83	28,086
Bellies	58,600	106,194	109,454	187	103	
Loins, Total	23,166	32,764	33,460	144	102	25,887
Bone-in	13,580	15,871	19,021	140	120	
Boneless <sup>5</sup>	9,586	16,893	14,439	151	85	
Ribs <sup>6</sup>	59,367	84,874	78,841	133	93	
Butts	11,062	17,651	17,808	161	101	
Trimmings <sup>7</sup>	108,519	65,268	70,019	65	107	
Other <sup>8</sup>	78,493	99,555	109,932	140	110	
Variety Meats <sup>9</sup>	38,071	51,817	56,583	149	109	
Unclassified <sup>10</sup>	15,002	17,016	16,470	110	97	
Total	487,035	559,911	593,510	122	106	507,591
(Government Owned)	1,286	5,236	6,051	471	116	
Other						
Veal	5,905	4,416	4,395	74	100	
Lamb & Mutton	16,306	12,374	13,152	81	106	
Total	22,211	16,790	17,547	79	105	17,284
Canned						
Canned Hams	3,512	3,802	4,511	128	119	
Other Canned Meat	1,085	852	861	79	101	
Total	4,597	4,654	5,372	117	115	2,818
Total	849,293	890,759	933,454	110	105	841,220
Miscellaneous						
Cooler	675,743	736,054	715,266	106	97	438,527
Freezer	1,937,589	1,861,123	1,977,775	102	106	1,921,813
Total	2,613,332	2,597,177	2,693,041	103	104	2,360,340
Commodities						
Stored in Coolers	3,706,992	4,877,902	4,157,486	112	85	1,267,471
Stored in Freezers	10,705,804	10,717,679	11,072,869	103	103	6,756,643
Total	14,412,796	15,595,581	15,230,355	106	98	8,024,114

<sup>1</sup> Adjusted to 42.0 degrees Brix equivalent (9.896 pounds per gallon).

<sup>2</sup> Includes all boxed boneless beef, such as ground beef, roasts, steaks, loins, strips, rounds, trimmings, etc. Variety meats (edible offal), such as tongues, livers, hearts, kidneys, and other organs removed from slaughtered beef, are included as miscellaneous freezer stocks.

<sup>3</sup> Includes all boxed primal beef cuts, bone-in.

<sup>4</sup> Includes full ham, bone removed and individual muscles separated.

<sup>5</sup> Includes pork tenderloins.

<sup>6</sup> Includes spareribs and backribs.

<sup>7</sup> Includes 42% regular trimmings, 72% special trimmings, boneless picnic meat, jowls, neckbone trimmings, blade, cheek, head, and shank meat, etc. Packaged bacon, sausage, and processed items, such as hot dogs and luncheon meats, are included in miscellaneous cooler or freezer stocks.

<sup>8</sup> Includes ears, tails, feet, neckbones and snouts.

<sup>9</sup> Includes tongues, kidneys, livers, stomachs, hearts, chitterlings, salivary glands, and other organs removed from slaughtered hogs.

<sup>10</sup> Includes pork unable to be classified elsewhere in this report.

**Stocks in Cold Storage: By Commodity, Region,  
and United States, March 31, 1999**

Commodity	New England	Middle Atlantic	East North Central	West North Central	South Atlantic
	<i>1,000 Pounds</i>	<i>1,000 Pounds</i>	<i>1,000 Pounds</i>	<i>1,000 Pounds</i>	<i>1,000 Pounds</i>
Total Fresh Apples	7,401	235,001	106,650	43	112,193
Nuts					
Shelled					
Peanuts		47	185	33	351,385
Pecans <sup>1</sup>		127			9,253
In-Shell					
Pecans <sup>1</sup>		33			8,063
Dairy Products					
Natural Cheese					
American, Total	24,109	45,176	213,083	59,857	332
Other Natural Cheese	279	7,101	80,554	35,498	646
Frozen Poultry					
Broilers (Whole)	78	334	353	1,245	10,879
Hens	1	603	629	847	2,235
Other Chicken	2,097	6,487	12,667	40,255	218,382
Total	2,176	7,424	13,649	42,347	231,496
Whole Turkeys	3,753	17,558	14,368	28,324	35,969
Other Turkey	318	8,150	20,636	50,426	43,256
Total	4,071	25,708	35,004	78,750	79,225
Ducks	37	262	5,386	14	67
Total	6,284	33,394	54,039	121,111	310,788
Frozen Fruit					
Apples	23	33,027	37,561	103	1,603
Blueberries	11,232	6,313	18,954	301	1,984
Cherries, Tart (RSP)	69	3,972	74,204	69	371
Cherries, Sweet		828	7,504	97	65
Peaches	48	2,366	2,001	266	666
Raspberries, Red	423	1,743	444	669	388
Strawberries, Total	81	2,317	3,506	1,860	1,334
Other Frozen Fruit	119,893	33,452	199,779	199	5,126

See footnotes at end of table.

--continued

**Stocks in Cold Storage: By Commodity, Region,  
and United States, March 31, 1999 (continued)**

Commodity	East South Central	West South Central	Mountain	Pacific	US Total
	<i>1,000 Pounds</i>	<i>1,000 Pounds</i>	<i>1,000 Pounds</i>	<i>1,000 Pounds</i>	<i>1,000 Pounds</i>
Total Fresh Apples		500	24,639	2,120,983	2,607,410
Nuts					
Shelled					
Peanuts	53,792	156,567	175	1,241	563,425
Pecans <sup>1</sup>	959	18,034		129	28,502
In-Shell					
Pecans <sup>1</sup>	1,561	87,725		1	97,383
Dairy Products					
Natural Cheese					
American, Total	200	254	12,638	50,418	406,067
Other Natural Cheese	320	293	755	6,974	132,420
Frozen Poultry					
Broilers (Whole)	1,906	8,646	225	1,302	24,968
Hens	3,102	824	81	2,593	10,915
Other Chicken	147,178	277,454	4,100	43,409	752,029
Total	152,186	286,924	4,406	47,304	787,912
Whole Turkeys	2,546	39,808	9,262	32,959	184,547
Other Turkey	396	38,630	4,703	19,592	186,107
Total	2,942	78,438	13,965	52,551	370,654
Ducks	4	16	1	81	5,868
Total	155,132	365,378	18,372	99,936	1,164,434
Frozen Fruit					
Apples	182	1,963	227	16,855	91,544
Blueberries	122	670	435	8,291	48,302
Cherries, Tart (RSP)	73	678	6,524	4,957	90,917
Cherries, Sweet	4	110	380	2,846	11,834
Peaches	100	1,045	144	32,667	39,303
Raspberries, Red	94	320	206	18,856	23,143
Strawberries, Total	2,017	17,390	449	98,315	127,269
Other Frozen Fruit	420	9,358	2,146	79,103	449,476

See footnotes at end of table.

--continued

**Stocks in Cold Storage: By Commodity, Region,  
and United States, March 31, 1999 (continued)**

Commodity	New England	Middle Atlantic	East North Central	West North Central	South Atlantic
	<i>1,000 Pounds</i>	<i>1,000 Pounds</i>	<i>1,000 Pounds</i>	<i>1,000 Pounds</i>	<i>1,000 Pounds</i>
Frozen Juice					
Orange Juice Conc. <sup>2</sup>	17		3,296	407	2,105,652
Other Juice Concentrate	1,214	14,798	20,538	1,905	194,539
Frozen Vegetables <sup>3</sup>					
Asparagus		132	1,555	87	149
Limas, Fordhook		243	326	89	1,030
Limas, Baby		2,555	1,233	590	14,079
Green Beans, Reg. Cut		19,958	27,571	1,298	5,698
Green Beans, Fr. Style		11,645	7,147	149	549
Broccoli, Spears		2,992	161	2,456	3,038
Broccoli, Chopped & Cut		7,387	7,583	4,851	9,894
Brussels Sprouts		459	330	481	805
Carrots, Diced		1,795	9,473	1,056	8,306
Carrots, Other		9,453	8,147	2,524	10,544
Cauliflower		1,843	2,765	1,172	2,293
Corn, Cut		17,409	27,769	15,230	12,451
Corn, Cob		8,888	6,650	15,240	6,302
Mixed Vegetables		2,066	3,783	1,558	5,632
Okra		458	113	1,037	14,005
Onion Rings		749	8,373	1,698	973
Onions, Other		2,424	3,508	287	1,475
Blackeye Peas		233	284	10	4,555
Green Peas		14,328	17,095	7,606	7,818
Peas & Carrots Mixed		455	373	43	627
Spinach		7,136	1,414	706	10,786
Squash, Summer/Zucchini		2,422	15,563	272	11,740
Southern Greens		3,803	60	16	22,991
Other Vegetables		19,487	22,142	9,700	34,574
Potatoes					
French Fries	29,857	23,587	52,512	108,808	24,053
Other Frozen	6,552	14,927	31,214	5,976	7,739
Meat					
Frozen Beef					
Boneless	2,342	32,537	29,020	62,064	20,038
Beef Cuts	2,032	1,478	4,633	6,198	760
Frozen Pork					
Ribs	634	2,143	35,339	30,672	8,175
Trimnings	477	1,624	14,664	36,243	5,554
Other	3,843	4,809	24,573	26,014	11,108
Other					
Veal	272	649	1,920	532	51
Lamb & Mutton	548	3,995	1,719	723	1,322

See footnotes at end of table.

--continued



**Stocks in Cold Storage: By Commodity, Region,  
and United States, March 31, 1999 (continued)**

Commodity	East South Central	West South Central	Mountain	Pacific	US Total
	<i>1,000 Pounds</i>	<i>1,000 Pounds</i>	<i>1,000 Pounds</i>	<i>1,000 Pounds</i>	<i>1,000 Pounds</i>
Frozen Juice					
Orange Juice Concentrate	98	5,086	3,231	73,535	2,191,322
Other Juice Concentrate	1,231	15,677	216	200,743	450,861
Frozen Vegetables <sup>3</sup>					
Asparagus		339		1,145	3,407
Limas, Fordhook		69		5,072	6,829
Limas, Baby		378	3,066	26,853	48,754
Green Beans, Reg. Cut		832	93	65,231	120,681
Green Beans, Fr. Style		311	104	18,830	38,735
Broccoli, Spears		18,514	64	16,164	43,389
Broccoli, Chopped & Cut		38,198	1,231	53,376	122,520
Brussels Sprouts		562	4	13,445	16,086
Carrots, Diced		1,528	152	35,915	58,225
Carrots, Other		9,435	192	107,606	147,901
Cauliflower		10,408	20	31,010	49,511
Corn, Cut		2,916	474	183,562	259,811
Corn, Cob		1,858	167	150,403	189,508
Mixed Vegetables		8,796	78	26,859	48,772
Okra		8,901		494	25,008
Onion Rings		926	391	2,124	15,234
Onions, Other		1,137	2,374	16,767	27,972
Blackeye Peas		689		163	5,934
Green Peas		2,078	8,754	123,301	180,980
Peas & Carrots Mixed		134	31	7,891	9,554
Spinach		14,867	5,126	65,311	105,346
Squash, Summer/Zucchini		5,019	304	18,021	53,341
Southern Greens		12,419		372	39,661
Other Vegetables		35,521	3,789	113,495	238,708
Potatoes					
French Fries	1,184	36,603	307,417	430,523	1,014,544
Other Frozen	82	5,695	62,111	129,939	264,235
Meat					
Frozen Beef					
Boneless <sup>4</sup>	2,243	62,410	7,511	51,656	269,821
Beef Cuts <sup>5</sup>	473	10,471	4,280	9,258	39,583
Frozen Pork					
Ribs <sup>6</sup>	2,494	3,370	105	1,942	84,874
Trimmings <sup>7</sup>	805	2,761	443	2,697	65,268
Other <sup>8</sup>	4,276	20,223	458	4,251	99,555
Other					
Veal	12	218	15	747	4,416
Lamb & Mutton	1	1,005	1,213	1,848	12,374

<sup>1</sup> East North Central combined with South Atlantic. Mountain and West North Central combined with West South Central.

<sup>2</sup> Middle Atlantic combined with South Atlantic.

<sup>3</sup> New England combined with Middle Atlantic. East South Central combined with South Atlantic.

<sup>4</sup> Includes all boxed boneless beef, such as ground beef, roasts, steaks, loins, strips, rounds, trimmings, etc. Variety meats (edible offal), such as tongues, livers, hearts, kidneys, and other organs removed from slaughtered beef, are included as miscellaneous freezer stocks.

<sup>5</sup> Includes all boxed primal beef cuts, bone-in.

<sup>6</sup> Includes spareribs and backribs.

<sup>7</sup> Includes 42% regular trimmings, 72% special trimmings, boneless picnic meat, jowls, neckbone trimmings, blade, cheek, head, and shank meat, etc. Packaged bacon, sausage, and processed items, such as hot dogs and luncheon meats, are included in miscellaneous cooler or freezer stocks.

<sup>8</sup> Includes ears, tails, feet, neckbones and snouts.

**Stocks in Cold Storage: By Commodity, Region,  
and United States, April 30, 1999**

Commodity	New England	Middle Atlantic	East North Central	West North Central	South Atlantic
	<i>1,000 Pounds</i>	<i>1,000 Pounds</i>	<i>1,000 Pounds</i>	<i>1,000 Pounds</i>	<i>1,000 Pounds</i>
Total Fresh Apples	2,438	152,875	60,407	60	68,335
Nuts					
Shelled					
Peanuts		7	200	36	380,407
Pecans <sup>1</sup>		114			9,840
In-Shell					
Pecans <sup>1</sup>		25			5,042
Dairy Products					
Natural Cheese					
American, Total	25,812	45,782	237,131	70,084	439
Other Natural Cheese	329	8,218	79,319	32,323	647
Frozen Poultry					
Broilers (Whole)	76	292	359	930	11,714
Hens	1	553	1,234	859	2,512
Other Chicken	2,212	7,120	14,377	41,639	223,658
Total	2,289	7,965	15,970	43,428	237,884
Whole Turkeys	4,444	19,744	18,360	32,332	40,563
Other Turkey	403	10,943	22,589	56,339	46,979
Total	4,847	30,687	40,949	88,671	87,542
Ducks	41	215	5,522	15	71
Total	7,177	38,867	62,441	132,114	325,497
Frozen Fruit					
Apples	30	32,099	37,941	89	1,611
Blueberries	9,562	5,231	15,393	262	1,780
Cherries, Tart (RSP)	61	2,860	65,856	62	327
Cherries, Sweet		701	7,108	92	73
Peaches	40	2,108	1,943	147	393
Raspberries, Red	400	1,769	373	223	68
Strawberries, Total	110	2,038	3,010	1,352	1,143
Other Frozen Fruit	97,759	25,278	166,493	112	1,662

See footnotes at end of table.

--continued

**Stocks in Cold Storage: By Commodity, Region,  
and United States, April 30, 1999 (continued)**

Commodity	East South Central	West South Central	Mountain	Pacific	US Total
	<i>1,000 Pounds</i>	<i>1,000 Pounds</i>	<i>1,000 Pounds</i>	<i>1,000 Pounds</i>	<i>1,000 Pounds</i>
Total Fresh Apples		226	9,397	1,564,035	1,857,773
Nuts					
Shelled					
Peanuts	57,777	179,670	159	1,016	619,272
Pecans <sup>1</sup>	841	17,309		130	28,234
In-Shell					
Pecans <sup>1</sup>	1,458	68,996			75,521
Dairy Products					
Natural Cheese					
American, Total	219	255	13,006	57,837	450,565
Other Natural Cheese	320	295	647	8,622	130,720
Frozen Poultry					
Broilers (Whole)	2,026	8,348	250	582	24,577
Hens	2,327	607	114	2,247	10,454
Other Chicken	154,717	268,275	4,324	48,839	765,161
Total	159,070	277,230	4,688	51,668	800,192
Whole Turkeys	3,277	59,389	10,019	44,769	232,897
Other Turkey	460	45,014	4,966	23,697	211,390
Total	3,737	104,403	14,985	68,466	444,287
Ducks	4	24	1	146	6,039
Total	162,811	381,657	19,674	120,280	1,250,518
Frozen Fruit					
Apples	158	1,794	239	17,682	91,643
Blueberries	96	595	357	6,779	40,055
Cherries, Tart (RSP)	37	748	5,427	4,571	79,949
Cherries, Sweet	4	115	428	2,303	10,824
Peaches	102	957	165	26,545	32,400
Raspberries, Red	152	352	168	16,147	19,652
Strawberries, Total	1,849	20,846	298	95,895	126,541
Other Frozen Fruit	335	6,591	2,398	62,069	362,697

See footnotes at end of table.

--continued

**Stocks in Cold Storage: By Commodity, Region,  
and United States, April 30, 1999 (continued)**

Commodity	New England	Middle Atlantic	East North Central	West North Central	South Atlantic
	<i>1,000 Pounds</i>	<i>1,000 Pounds</i>	<i>1,000 Pounds</i>	<i>1,000 Pounds</i>	<i>1,000 Pounds</i>
Frozen Juice					
Orange Juice Conc. <sup>2</sup>	21		3,931	314	2,433,440
Other Juice Concentrate	1,157	14,712	18,021	1,863	191,083
Frozen Vegetables <sup>3</sup>					
Asparagus		160	1,180	74	182
Limas, Fordhook		335	310	103	787
Limas, Baby		2,095	1,063	518	12,098
Green Beans, Reg. Cut		13,327	21,707	1,141	5,508
Green Beans, Fr. Style		5,191	5,843	114	373
Broccoli, Spears		3,932	157	2,445	2,660
Broccoli, Chopped & Cut		7,727	7,988	5,240	9,419
Brussels Sprouts		443	266	485	847
Carrots, Diced		1,897	11,469	1,155	14,146
Carrots, Other		8,007	7,924	2,356	10,925
Cauliflower		1,170	2,366	1,147	2,013
Corn, Cut		13,845	23,015	12,136	10,982
Corn, Cob		4,861	5,485	11,416	6,849
Mixed Vegetables		1,898	3,947	1,414	5,797
Okra		560	141	973	12,190
Onion Rings		692	7,935	1,555	923
Onions, Other		2,430	4,022	242	2,643
Blackeye Peas		207	281	6	4,178
Green Peas		11,281	13,063	7,021	6,392
Peas & Carrots Mixed		283	466	68	576
Spinach		12,387	1,734	817	12,222
Squash, Summer/Zucchini		2,150	15,568	246	12,588
Southern Greens		2,341	52	10	22,141
Other Vegetables		17,571	22,031	8,956	38,761
Potatoes					
French Fries	33,993	22,798	55,521	102,194	24,076
Other Frozen	8,852	13,836	29,492	6,376	9,539
Meat					
Frozen Beef					
Boneless <sup>4</sup>	2,818	36,673	28,262	58,594	27,068
Beef Cuts <sup>5</sup>	1,966	1,035	4,309	6,963	735
Frozen Pork					
Ribs <sup>6</sup>	613	2,323	31,268	28,699	8,670
Trimmings <sup>7</sup>	615	2,440	15,696	35,454	7,965
Other <sup>8</sup>	3,256	4,740	28,441	29,444	11,841
Other					
Veal	271	715	1,969	541	42
Lamb & Mutton	537	3,771	1,783	711	1,420

See footnotes at end of table.

--continued

**Stocks in Cold Storage: By Commodity, Region,  
and United States, April 30, 1999 (continued)**

Commodity	East South Central	West South Central	Mountain	Pacific	US Total
	<i>1,000 Pounds</i>	<i>1,000 Pounds</i>	<i>1,000 Pounds</i>	<i>1,000 Pounds</i>	<i>1,000 Pounds</i>
Frozen Juice					
Orange Juice Concentrate	118	5,039	4,256	88,785	2,535,904
Other Juice Concentrate	1,559	15,699	203	213,251	457,548
Frozen Vegetables <sup>3</sup>					
Asparagus		410		1,046	3,052
Limas, Fordhook		89		4,743	6,367
Limas, Baby		363	2,721	23,454	42,312
Green Beans, Reg. Cut		792	75	48,941	91,491
Green Beans, Fr. Style		239	173	15,934	27,867
Broccoli, Spears		20,837	123	15,349	45,503
Broccoli, Chopped & Cut		45,452	1,234	67,067	144,127
Brussels Sprouts		1,292	4	14,237	17,574
Carrots, Diced		1,552	145	31,333	61,697
Carrots, Other		11,003	342	96,666	137,223
Cauliflower		8,197	54	26,675	41,622
Corn, Cut		2,826	541	147,386	210,731
Corn, Cob		1,720	65	126,991	157,387
Mixed Vegetables		8,366	82	29,747	51,251
Okra		8,473		410	22,747
Onion Rings		1,042	229	2,152	14,528
Onions, Other		1,691	2,782	19,326	33,136
Blackeye Peas		1,128		196	5,996
Green Peas		2,017	7,402	104,099	151,275
Peas & Carrots Mixed		247	25	8,419	10,084
Spinach		17,080	6,783	103,026	154,049
Squash, Summer/Zucchini		4,779	189	16,763	52,283
Southern Greens		13,550		283	38,377
Other Vegetables		35,901	4,458	104,759	232,437
Potatoes					
French Fries	1,142	28,514	302,613	409,987	980,838
Other Frozen	81	5,894	66,662	124,249	264,981
Meat					
Frozen Beef					
Boneless <sup>4</sup>	4,680	59,075	7,176	51,538	275,884
Beef Cuts <sup>5</sup>	337	11,815	4,262	9,719	41,141
Frozen Pork					
Ribs <sup>6</sup>	1,923	3,486	73	1,786	78,841
Trimmings <sup>7</sup>	612	3,771	487	2,979	70,019
Other <sup>8</sup>	4,001	23,519	309	4,381	109,932
Other					
Veal	10	175		672	4,395
Lamb & Mutton	1	1,508	1,318	2,103	13,152

<sup>1</sup> East North Central combined with South Atlantic. Mountain and West North Central Combined with West South Central.

<sup>2</sup> Middle Atlantic combined with South Atlantic.

<sup>3</sup> New England combined with Middle Atlantic. East South Central combined with South Atlantic.

<sup>4</sup> Includes all boxed boneless beef, such as ground beef, roasts, steaks, loins, strips, rounds, trimmings, etc. Variety meats (edible offal), such as tongues, livers, hearts, kidneys, and other organs removed from slaughtered beef, are included as miscellaneous freezer stocks.

<sup>5</sup> Includes all boxed primal beef cuts, bone-in.

<sup>6</sup> Includes spareribs and backribs.

<sup>7</sup> Includes 42% regular trimmings, 72% special trimmings, boneless picnic meat, jowls, neckbone trimmings, blade, cheek, head, and shank meat, etc. Packaged bacon, sausage, and processed items, such as hot dogs and luncheon meats, are included in miscellaneous cooler or freezer stocks.

<sup>8</sup> Includes ears, tails, feet, neckbones and snouts.

**Public General Warehouses: Cold Storage Space Occupied  
by Region and United States, April 1999**

Region	Cooler				Freezer			
	Usable Space	Usable Space Occupied			Usable Space	Usable Space Occupied		
		Apr 30 1999	Apr 30 1998	Mar 31 1999		Apr 30 1999	Apr 30 1998	Mar 31 1999
	<i>1,000 Cu Ft</i>	<i>Percent</i>	<i>Percent</i>	<i>Percent</i>	<i>1,000 Cu Ft</i>	<i>Percent</i>	<i>Percent</i>	<i>Percent</i>
New England	2,422	56	61	64	20,251	69	66	74
Middle Atlantic	34,687	69	71	73	90,893	79	78	80
E. North Central	47,686	52	56	54	173,367	61	58	56
W. North Central	45,489	52	50	51	148,869	58	58	60
South Atlantic	50,031	58	50	48	159,314	57	56	56
E. South Central	9,351	56	52	49	57,747	60	51	47
W. South Central	20,826	50	49	50	130,867	74	68	70
Mountain	5,916	74	81	80	46,929	66	72	68
Pacific	35,224	42	41	42	240,143	64	63	61
US	251,632	55	54	54	1,068,380	64	62	62

## Cold Storage Regions



**Apples in Cold Storage: By State  
and United States, April 1999**

State	All Warehouses		
	Apr 30, 1998	Mar 31, 1999	Apr 30, 1999
	<i>1,000 Pounds</i>	<i>1,000 Pounds</i>	<i>1,000 Pounds</i>
CA	15,689	48,554	29,751
MI	72,368	101,682	58,357
N ENG	21,369	7,401	2,438
NY	133,644	140,448	81,144
OH	3,480	3,985	2,050
OR	4,733	13,254	9,197
PA	87,612	93,912	68,880
VA	54,500	77,028	47,726
WA	1,190,970	2,059,175	1,525,087
WV	21,687	24,006	13,294
Other States	19,584	37,965	19,849
US	1,625,636	2,607,410	1,857,773

**Survey Procedures:** Questionnaires are mailed about the 24th of each month to all operators on the list of approximately 1,400 public and private cold storage warehouses. In addition, apple data are obtained from special surveys and other sources (State Departments of Agriculture, U.S. Apple Association, etc.). All survey data represent stocks as of the end of the month.

Data are collected from warehouses artificially cooled to a temperature of 50 degrees Fahrenheit or lower, and whose food products are normally stored for 30 days or more. All food items in these facilities are reported regardless of the number of days stored at the time of the report. Also included are specialized storage facilities meeting the 30 day requirement, such as fruit houses, dairy manufacturing plants, frozen fruit, fruit juice, and vegetable processors, and poultry and meat packing plants. Excluded are stocks in space maintained by wholesalers, jobbers, distributors, chain stores, locker plants containing individual lockers, meat packer branch houses, and frozen food processors whose entire inventories are turned over more than once a month.

**Estimating Procedures:** Data for reporting firms are added to estimates for non-reporting firms to obtain regional and National totals. Estimates for non-reporting firms are obtained by multiplying the previous month's figure by a percent change from the previous month. The percent change is calculated for each item from totals of the current and previous month summed from firms that reported both months.

**Revision Policy:** Data are revised the following month based on late reports or corrected data. Final figures are published in the annual summary in February of the following year.

**Reliability:** Reports are received from 900 firms each month which represent about 70 percent of the total capacity. Firms that are not on the list or firms who have never reported are not represented in the data. Monthly data can vary due to different firms reporting month to month. Survey data are also subject to non-sampling errors such as omissions and mistakes in reporting and in processing the data. While these errors cannot be measured directly, they are minimized by carefully reviewing all reported data for consistency and reasonableness.



The next "Cold Storage" report will be released at 3 p.m. ET on June 18, 1999.

The United States Department of Agriculture (USDA) prohibits discrimination in all its programs on the basis of race, color, national origin, gender, religion, age, disability, political beliefs, sexual orientation, and marital or family status. (Not all prohibited bases apply to all programs.) Persons with disabilities who require alternative means for communication of program information (braille, large print, audiotape, etc.) should contact the USDA's TARGET Center at 202-720-2600 (voice and TDD).

To file a complaint of discrimination, write USDA, Director, Office of Civil Rights, Room 326-W, Whitten Building, 14th and Independence Avenue, SW, Washington, D.C., 20250-9410, or call 202-720-5964 (voice or TDD). USDA is an equal opportunity provider and employer.

## **ACCESS TO REPORTS!!**

---

For your convenience, there are several ways to obtain NASS reports, data products, and services:

### **INTERNET ACCESS**

All NASS reports are available free of charge on the worldwide Internet. For access, connect to the Internet and go to the NASS Home Page at: <http://www.usda.gov/nass/>. Select "Today's Reports" or Publications and then Reports by Calendar or Publications and then Search, by Title or Subject.

### **E-MAIL SUBSCRIPTION**

All NASS reports are available by subscription free of charge direct to your e-mail address. Send an e-mail message to: [usda-reports@usda.mannlib.cornell.edu](mailto:usda-reports@usda.mannlib.cornell.edu). In the body of the message type the word: **list**.

### **AUTOFAX ACCESS**

NASSFax service is available for some reports from your fax machine. Please call 202-720-2000, using the handset attached to your fax. Respond to the voice prompts. Document 0411 is a list of available reports.

-----

### **PRINTED REPORTS OR DATA PRODUCTS**

CALL OUR TOLL-FREE ORDER DESK: 800-999-6779 (U.S. and Canada)  
Other areas, please call 703-834-0125 FAX: 703-834-0110  
(Visa, MasterCard, check, or money order acceptable for payment.)

-----

### **ASSISTANCE**

For **assistance** with general agricultural statistics or further information about NASS or its products or services, contact the **Agricultural Statistics Hotline** at **800-727-9540**, 7:30 a.m. to 4:00 p.m. ET, or e-mail: [nass@nass.usda.gov](mailto:nass@nass.usda.gov).