



Cold Storage

Released August 20, 1999, by the National Agricultural Statistics Service (NASS), Agricultural Statistics Board, U.S. Department of Agriculture. For information on "Cold Storage" call Linda Simpson at (202) 720-8784, office hours 7:00 a.m. to 4:30 p.m. ET.

HIGHLIGHTS

Frozen food stocks in refrigerated warehouses on July 31, 1999, were greater than year earlier levels for butter, chicken, pork, fruit, and vegetables. This was the eighth month in a row that pork exceeded the 500 million pound mark and also a high for the respective month. The previous record July high total pork stocks was 415 million pounds set in 1998. Likewise, July 1999 stocks of chicken, at 943 million pounds, also broke the previous record July high of 666 million pounds set in 1997. Vegetables also set a new July record high. Cooler stocks of peanuts and apples were each higher than a year earlier.

Total red meat supplies in freezers were down 4 percent from June 1999, but were 9 percent above July 1998. Frozen pork stocks were 6 percent below last month, but were up 21 percent from last year. Stocks of pork bellies decreased 25 percent from last month, but were more than double the July 1998 stocks.

Total frozen poultry supplies were up 10 percent from last month and 21 percent above last year's level. Total stocks of chicken were up 12 percent from last month and were 63 percent above July 1998. Total pounds of turkey in freezers increased 8 percent from last month, but were 14 percent below last year.

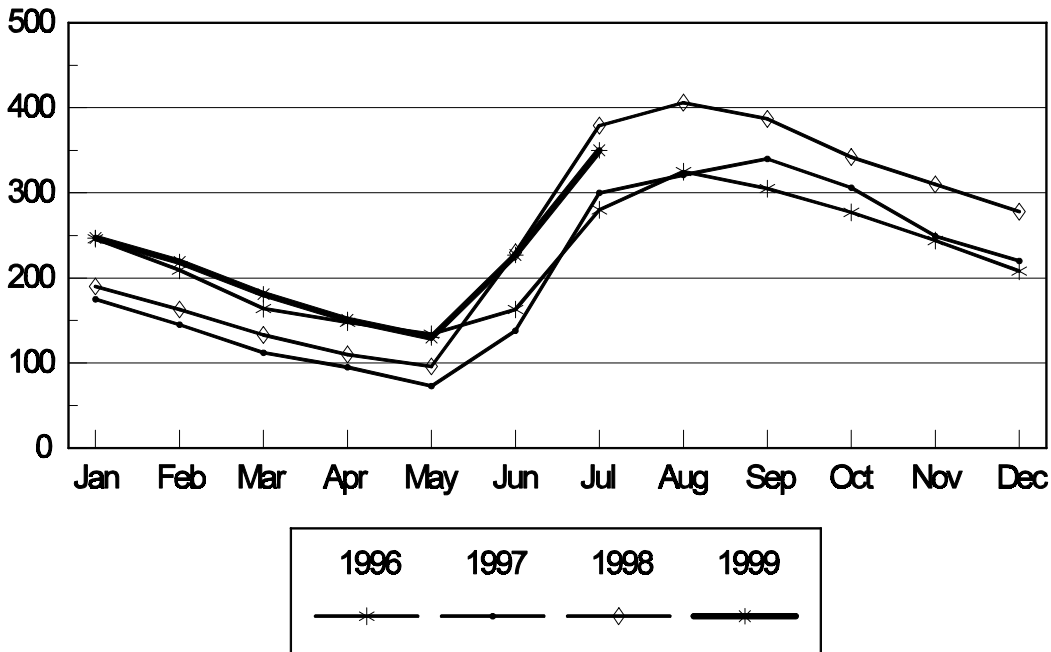
Public cooler occupancy at 54 percent of capacity and public freezer occupancy at 62 percent were each 3 percentage points below last year.

Table of Contents

	Page
Stocks in Cold Storage: By Commodity, United States, July 1999	3
Stocks in Cold Storage: By Commodity, Region, and United States, June 30, 1999	6
Stocks in Cold Storage: By Commodity, Region, and United States, July 31, 1999.	10
Public General Warehouses: Cold Storage Space Occupied by Region and United States, July 1999	14
Survey and Estimating Procedures, Revision Policy and Reliability	15

Frozen Green Peas Cold Storage Stocks, 1996-1999 United States

Million Pounds



**Stocks in Cold Storage: By Commodity,
United States, July 1999**

Commodity	Stocks in All Warehouses			Percent of		Public Warehouse Stocks
	Jul 31, 1998	Jun 30, 1999	Jul 31, 1999	Jul 1998	Jun 1999	Jul 31, 1999
	<i>1,000 Pounds</i>	<i>1,000 Pounds</i>	<i>1,000 Pounds</i>	<i>Percent</i>	<i>Percent</i>	<i>1,000 Lbs</i>
Fresh Fruit						
Apples						
Regular Storage	15,830	19,303	11,571	73	60	
Controlled Atmosphere	306,528	713,099	349,281	114	49	
Total	322,358	732,402	360,852	112	49	1,749
Pears						
Bartlett	352	3,720	11,452		308	
Other Varieties	46	6,576	116	252	2	
Total	398	10,296	11,568		112	4,047
Nuts						
Shelled						
Peanuts	388,050	653,416	590,328	152	90	
Pecans	44,713	28,958	26,763	60	92	
Other Shelled	119,303	138,199	125,279	105	91	
Total	552,066	820,573	742,370	134	90	448,036
In-Shell						
Peanuts	19,659	30,357	26,149	133	86	
Pecans	93,617	37,010	25,272	27	68	
Other In-Shell	4,664	3,920	4,589	98	117	
Total	117,940	71,287	56,010	47	79	18,546
Dairy Products						
Butter, Total	50,979	121,253	118,941	233	98	96,291
(Government Owned)	285	257	334	117	130	
Natural Cheese						
American, Total	461,123	539,086	554,533	120	103	
(Government Owned)	288	33	48	17	145	
Swiss	10,823	11,835	10,410	96	88	
Other Natural Cheese	123,875	184,009	197,515	159	107	
Total	595,821	734,930	762,458	128	104	469,256
Eggs, Frozen						
Whites	869	620	686	79	111	
Yolks	986	842	861	87	102	
Whole & Mixed	6,996	8,175	7,954	114	97	
Unclassified	2,907	1,635	1,636	56	100	
Total	11,758	11,272	11,137	95	99	10,591
Frozen Poultry						
Chicken						
Broilers (Whole)	15,448	33,403	34,182	221	102	
Hens	9,283	10,824	10,058	108	93	
Other Chicken	553,780	797,807	898,950	162	113	
Total	578,511	842,034	943,190	163	112	
Turkey						
Whole Turkeys	423,662	328,810	386,954	91	118	
Other Turkey	278,114	227,326	215,003	77	95	
Total	701,776	556,136	601,957	86	108	
Ducks	4,937	5,536	5,335	108	96	
Total	1,285,224	1,403,706	1,550,482	121	110	1,439,105

**Stocks in Cold Storage: By Commodity,
United States, July 1999 (Continued)**

Commodity	Stocks in All Warehouses			Percent of		Public Warehouse Stocks
	Jul 31, 1998	Jun 30, 1999	Jul 31, 1999	Jul 1998	Jun 1999	Jul 31, 1999
	<i>1,000 Pounds</i>	<i>1,000 Pounds</i>	<i>1,000 Pounds</i>	<i>Percent</i>	<i>Percent</i>	<i>1,000 Lbs</i>
Frozen Fruit						
Apples	65,242	79,824	74,161	114	93	
Apricots	23,058	4,904	15,814	69	322	
Blackberries, Total	29,625	8,444	25,032	84	296	
IQF	16,274	5,028	15,218	94	303	
Pails and Tubs	3,238	1,940	2,905	90	150	
Barrels, 400 lbs net	9,046	370	6,017	67		
Concentrate	1,067	1,106	892	84	81	
Blueberries	70,454	25,358	47,513	67	187	
Boysenberries	7,915	3,842	7,752	98	202	
Cherries, Tart (RSP)	169,624	58,361	162,145	96	278	
Cherries, Tart (Juice)	6,064	1,889	3,827	63	203	
Cherries, Sweet	19,052	10,834	16,706	88	154	
Grapes	733	1,798	1,407	192	78	
Peaches	21,972	21,880	21,699	99	99	
Raspberries, Black	2,067	109	2,707	131		
Raspberries, Red, Total	69,723	11,424	48,593	70	425	
IQF	15,409	5,504	16,043	104	291	
Pails and Tubs	16,088	2,867	11,489	71	401	
Barrels, 400 lbs net	35,911	2,047	19,779	55	966	
Concentrate	2,315	1,006	1,282	55	127	
Strawberries, Total	361,017	365,575	377,205	104	103	
Other Frozen Fruit	193,324	283,045	288,273	149	102	
Total	1,039,870	877,287	1,092,834	105	125	772,130
Frozen Juice						
Orange Juice Conc. ¹	2,249,040	2,001,505	1,789,869	80	89	
(Gallon Equivalent)	227,268	202,254	180,868			
Other Juice Concentrate	451,741	366,396	349,524	77	95	
Total	2,700,781	2,367,901	2,139,393	79	90	228,636
Frozen Vegetables						
Asparagus	11,154	15,712	18,075	162	115	
Limas, Fordhook	7,572	4,924	6,048	80	123	
Limas, Baby	24,652	33,466	29,818	121	89	
Green Beans, Reg. Cut	133,939	61,831	110,825	83	179	
Green Beans, Fr. Style	33,017	20,694	27,910	85	135	
Broccoli, Spears	22,890	49,485	52,539	230	106	
Broccoli, Chopped & Cut	87,638	139,675	150,080	171	107	
Brussels Sprouts	6,130	15,145	13,299	217	88	
Carrots, Diced	28,769	46,993	44,518	155	95	
Carrots, Other	120,687	115,576	113,368	94	98	
Cauliflower	31,886	32,894	29,221	92	89	
Corn, Cut	154,057	147,339	140,397	91	95	
Corn, Cob	90,751	108,050	97,545	107	90	
Mixed Vegetables	52,960	46,699	48,775	92	104	
Okra	71,015	51,951	57,559	81	111	
Onion Rings	11,845	13,397	13,841	117	103	
Onions, Other	21,468	35,605	33,168	154	93	
Blackeye Peas	6,069	5,598	4,263	70	76	
Green Peas	379,957	226,888	349,736	92	154	
Peas & Carrots Mixed	7,400	10,062	9,825	133	98	
Spinach	90,864	142,617	131,159	144	92	
Squash, Summer/Zucchini	68,411	49,942	56,288	82	113	
Southern Greens	27,975	39,455	35,760	128	91	
Other Vegetables	267,904	243,759	259,983	97	107	
Total	1,759,010	1,657,757	1,834,000	104	111	1,135,089

See footnotes at end of table.

--continued

**Stocks in Cold Storage: By Commodity,
United States, July 1999 (Continued)**

Commodity	Stocks in All Warehouses			Percent of		Public Warehouse Stocks
	Jul 31, 1998	Jun 30, 1999	Jul 31, 1999	Jul 1998	Jun 1999	Jul 31, 1999
	<i>1,000 Pounds</i>	<i>1,000 Pounds</i>	<i>1,000 Pounds</i>	<i>Percent</i>	<i>Percent</i>	<i>1,000 Lbs</i>
Potatoes						
French Fries	967,452	965,960	897,929	93	93	
Other Frozen	267,268	268,166	243,678	91	91	
Total	1,234,720	1,234,126	1,141,607	92	93	817,211
Meat						
Frozen Beef						
Boneless ²	267,552	251,820	245,428	92	97	
Beef Cuts ³	35,444	40,957	46,903	132	115	
Total	302,996	292,777	292,331	96	100	288,812
(Government Owned)	1,973	3,489	3,415	173	98	
Frozen Pork						
Picnics, Bone-in	9,975	8,398	6,390	64	76	
Hams, Total	105,383	126,644	135,289	128	107	131,549
Bone-in	61,196	77,681	76,815	126	99	75,703
Boneless ⁴	44,187	48,963	58,474	132	119	55,846
Bellies	31,433	93,383	69,653	222	75	
Loins, Total	17,600	27,673	22,845	130	83	18,090
Bone-in	10,064	15,886	12,000	119	76	
Boneless ⁵	7,536	11,787	10,845	144	92	
Ribs ⁶	39,543	43,107	39,569	100	92	
Butts	7,263	11,580	9,157	126	79	
Trimmings ⁷	62,408	48,084	43,744	70	91	
Other ⁸	75,796	102,040	103,564	137	101	
Variety Meats ⁹	48,036	55,406	59,690	124	108	
Unclassified ¹⁰	17,183	15,785	10,667	62	68	
Total	414,620	532,100	500,568	121	94	438,890
(Government Owned)	975	6,400	6,137	629	96	
Other						
Veal	5,129	3,957	4,069	79	103	
Lamb & Mutton	16,188	12,459	11,975	74	96	
Total	21,317	16,416	16,044	75	98	15,953
Canned						
Canned Hams	7,612	4,748	6,235	82	131	
Other Canned Meat	612	1,065	760	124	71	
Total	8,224	5,813	6,995	85	120	3,609
Total	747,157	847,106	815,938	109	96	747,264
Miscellaneous						
Cooler	658,211	676,519	695,945	106	103	463,890
Freezer	1,856,251	2,045,220	2,013,942	108	98	1,934,837
Total	2,514,462	2,721,739	2,709,887	108	100	2,398,727
Commodities						
Stored in Coolers	2,255,018	3,051,820	2,636,198	117	86	1,409,133
Stored in Freezers	10,677,526	10,559,815	10,711,279	100	101	7,177,545
Total	12,932,544	13,611,635	13,347,477	103	98	8,586,678

¹ Adjusted to 42.0 degrees Brix equivalent (9.896 pounds per gallon).

² Includes all boxed boneless beef, such as ground beef, roasts, steaks, loins, strips, rounds, trimmings, etc. Variety meats (edible offal), such as tongues, livers, hearts, kidneys, and other organs removed from slaughtered beef, are included as miscellaneous freezer stocks.

³ Includes all boxed primal beef cuts, bone-in.

⁴ Includes full ham, bone removed and individual muscles separated.

⁵ Includes pork tenderloins.

⁶ Includes spareribs and backribs.

⁷ Includes 42% regular trimmings, 72% special trimmings, boneless picnic meat, jowls, neckbone trimmings, blade, cheek, head, and shank meat, etc. Packaged bacon, sausage, and processed items, such as hot dogs and luncheon meats, are included in miscellaneous cooler or freezer stocks.

⁸ Includes ears, tails, feet, neckbones and snouts.

⁹ Includes tongues, kidneys, livers, stomachs, hearts, chitterlings, salivary glands, and other organs removed from slaughtered hogs.

¹⁰ Includes pork unable to be classified elsewhere in this report.

**Stocks in Cold Storage: By Commodity, Region,
and United States, June 30, 1999**

Commodity	New England	Middle Atlantic	East North Central	West North Central	South Atlantic
	<i>1,000 Pounds</i>	<i>1,000 Pounds</i>	<i>1,000 Pounds</i>	<i>1,000 Pounds</i>	<i>1,000 Pounds</i>
Nuts					
Shelled					
Peanuts		136	267	39	404,422
Pecans ¹		110			11,102
In-Shell					
Pecans ¹					3,529
Dairy Products					
Natural Cheese					
American, Total	28,238	48,116	246,096	141,373	661
Other Natural Cheese	498	12,764	91,851	66,821	801
Frozen Poultry					
Broilers (Whole)	105	1,363	256	992	14,619
Hens	2	101	1,914	799	3,345
Other Chicken	2,155	7,770	14,523	32,731	238,358
Total	2,262	9,234	16,693	34,522	256,322
Whole Turkeys	7,047	31,972	28,875	35,577	53,016
Other Turkey	303	10,231	22,651	72,600	53,374
Total	7,350	42,203	51,526	108,177	106,390
Ducks	61	180	4,993	4	82
Total	9,673	51,617	73,212	142,703	362,794
Frozen Fruit					
Apples	15	26,958	31,041	104	462
Blueberries	6,001	2,926	8,020	258	2,576
Cherries, Tart (RSP)	47	1,314	49,763	67	159
Cherries, Sweet		553	6,650	71	146
Peaches	27	1,228	1,980	44	489
Raspberries, Red	382	1,068	316	157	89
Strawberries, Total	217	2,546	6,017	731	1,309
Other Frozen Fruit	75,987	20,940	129,913	552	639

See footnotes at end of table.

--continued

**Stocks in Cold Storage: By Commodity, Region,
and United States, June 30, 1999 (continued)**

Commodity	East South Central	West South Central	Mountain	Pacific	US Total
	<i>1,000 Pounds</i>	<i>1,000 Pounds</i>	<i>1,000 Pounds</i>	<i>1,000 Pounds</i>	<i>1,000 Pounds</i>
Nuts					
Shelled					
Peanuts	70,927	176,512	164	949	653,416
Pecans ¹	738	16,896		112	28,958
In-Shell					
Pecans ¹	1,406	32,075			37,010
Dairy Products					
Natural Cheese					
American, Total		348	13,889	60,365	539,086
Other Natural Cheese	213	235	961	9,865	184,009
Frozen Poultry					
Broilers (Whole)	1,850	12,004	365	1,849	33,403
Hens	2,543	264	667	1,189	10,824
Other Chicken	163,635	282,820	3,294	52,521	797,807
Total	168,028	295,088	4,326	55,559	842,034
Whole Turkeys	4,742	79,087	13,695	74,799	328,810
Other Turkey	544	39,579	3,967	24,077	227,326
Total	5,286	118,666	17,662	98,876	556,136
Ducks	2	31	1	182	5,536
Total	173,316	413,785	21,989	154,617	1,403,706
Frozen Fruit					
Apples	113	2,022	297	18,812	79,824
Blueberries	59	626	365	4,527	25,358
Cherries, Tart (RSP)	52	504	2,967	3,488	58,361
Cherries, Sweet	3	158	639	2,614	10,834
Peaches	48	836	184	17,044	21,880
Raspberries, Red	157	644	78	8,533	11,424
Strawberries, Total	4,532	20,477	1,977	327,769	365,575
Other Frozen Fruit	654	5,360	1,956	47,044	283,045

See footnotes at end of table.

--continued

**Stocks in Cold Storage: By Commodity, Region,
and United States, June 30, 1999 (continued)**

Commodity	New England	Middle Atlantic	East North Central	West North Central	South Atlantic
	<i>1,000 Pounds</i>	<i>1,000 Pounds</i>	<i>1,000 Pounds</i>	<i>1,000 Pounds</i>	<i>1,000 Pounds</i>
Frozen Juice					
Orange Juice Conc. ²	14		3,133	192	1,923,063
Other Juice Concentrate	904	15,148	16,942	2,471	156,504
Frozen Vegetables ³					
Asparagus		144	8,755	68	423
Limas, Fordhook		231	236	77	886
Limas, Baby		1,341	777	432	10,010
Green Beans, Reg. Cut		6,910	12,218	1,547	6,249
Green Beans, Fr. Style		3,716	2,255	77	497
Broccoli, Spears		2,575	173	2,076	1,891
Broccoli, Chopped & Cut		5,759	7,884	4,534	8,568
Brussels Sprouts		291	308	438	847
Carrots, Diced		2,133	6,327	1,101	12,389
Carrots, Other		5,445	6,505	1,322	10,333
Cauliflower		1,332	2,046	859	1,407
Corn, Cut		9,997	15,545	10,005	13,571
Corn, Cob		1,444	4,126	5,649	6,146
Mixed Vegetables		2,164	3,602	1,235	7,469
Okra		849	218	1,223	17,378
Onion Rings		569	7,978	1,009	1,365
Onions, Other		1,941	4,377	360	4,643
Blackeye Peas		123	311	9	3,762
Green Peas		29,343	15,740	6,320	12,603
Peas & Carrots Mixed		540	357	56	600
Spinach		13,837	2,093	992	13,330
Squash, Summer/Zucchini		907	7,487	363	14,915
Southern Greens		2,058	43	20	24,499
Other Vegetables		18,101	22,362	6,161	42,677
Potatoes					
French Fries	35,587	34,729	65,803	83,224	21,644
Other Frozen	10,130	9,719	36,798	5,392	9,232
Meat					
Frozen Beef					
Boneless	3,104	28,296	30,224	53,479	22,191
Beef Cuts	2,416	1,017	4,794	7,919	639
Frozen Pork					
Ribs	358	1,586	17,607	13,626	5,029
Trimnings	335	1,322	10,815	23,264	6,121
Other	4,013	4,675	25,697	23,565	11,415
Other					
Veal	240	574	1,941	346	36
Lamb & Mutton	547	3,442	1,823	702	1,460

See footnotes at end of table.

--continued

**Stocks in Cold Storage: By Commodity, Region,
and United States, June 30, 1999 (continued)**

Commodity	East South Central	West South Central	Mountain	Pacific	US Total
	<i>1,000 Pounds</i>	<i>1,000 Pounds</i>	<i>1,000 Pounds</i>	<i>1,000 Pounds</i>	<i>1,000 Pounds</i>
Frozen Juice					
Orange Juice Concentrate	45	4,032	3,378	67,648	2,001,505
Other Juice Concentrate	1,876	17,306	435	154,810	366,396
Frozen Vegetables ³					
Asparagus		468		5,854	15,712
Limas, Fordhook		65		3,429	4,924
Limas, Baby		348	2,361	18,197	33,466
Green Beans, Reg. Cut		901	111	33,895	61,831
Green Beans, Fr. Style		220	133	13,796	20,694
Broccoli, Spears		23,319	2,480	16,971	49,485
Broccoli, Chopped & Cut		48,587	1,224	63,119	139,675
Brussels Sprouts		1,326	6	11,929	15,145
Carrots, Diced		2,006	156	22,881	46,993
Carrots, Other		11,506	1,080	79,385	115,576
Cauliflower		7,440	58	19,752	32,894
Corn, Cut		2,074	573	95,574	147,339
Corn, Cob		1,355	573	88,757	108,050
Mixed Vegetables		6,311	228	25,690	46,699
Okra		31,834		449	51,951
Onion Rings		669	259	1,548	13,397
Onions, Other		2,026	2,715	19,543	35,605
Blackeye Peas		1,189		204	5,598
Green Peas		2,734	10,184	149,964	226,888
Peas & Carrots Mixed		191	26	8,292	10,062
Spinach		16,557	10,446	85,362	142,617
Squash, Summer/Zucchini		7,629	157	18,484	49,942
Southern Greens		12,281		554	39,455
Other Vegetables		36,673	3,901	113,884	243,759
Potatoes					
French Fries	1,114	16,035	296,370	411,454	965,960
Other Frozen	83	7,316	67,406	122,090	268,166
Meat					
Frozen Beef					
Boneless ⁴	3,329	60,230	6,670	44,297	251,820
Beef Cuts ⁵	257	8,094	5,405	10,416	40,957
Frozen Pork					
Ribs ⁶	1,668	1,748	41	1,444	43,107
Trimmings ⁷	383	1,238	187	4,419	48,084
Other ⁸	8,362	19,341	283	4,689	102,040
Other					
Veal	38	136		646	3,957
Lamb & Mutton	1	1,663	891	1,930	12,459

¹ East North Central combined with South Atlantic. Mountain and West North Central combined with West South Central.

² Middle Atlantic combined with South Atlantic.

³ New England combined with Middle Atlantic. East South Central combined with South Atlantic.

⁴ Includes all boxed boneless beef, such as ground beef, roasts, steaks, loins, strips, rounds, trimmings, etc. Variety meats (edible offal), such as tongues, livers, hearts, kidneys, and other organs removed from slaughtered beef, are included as miscellaneous freezer stocks.

⁵ Includes all boxed primal beef cuts, bone-in.

⁶ Includes spareribs and backribs.

⁷ Includes 42% regular trimmings, 72% special trimmings, boneless picnic meat, jowls, neckbone trimmings, blade, cheek, head, and shank meat, etc. Packaged bacon, sausage, and processed items, such as hot dogs and luncheon meats, are included in miscellaneous cooler or freezer stocks.

⁸ Includes ears, tails, feet, neckbones and snouts.

**Stocks in Cold Storage: By Commodity, Region,
and United States, July 31, 1999**

Commodity	New England	Middle Atlantic	East North Central	West North Central	South Atlantic
	<i>1,000 Pounds</i>	<i>1,000 Pounds</i>	<i>1,000 Pounds</i>	<i>1,000 Pounds</i>	<i>1,000 Pounds</i>
Nuts					
Shelled					
Peanuts		7	226	35	383,489
Pecans ¹		101			9,854
In-Shell					
Pecans ¹					2,735
Dairy Products					
Natural Cheese					
American, Total	29,640	51,485	256,415	143,765	625
Other Natural Cheese	559	14,071	99,768	70,463	1,694
Frozen Poultry					
Broilers (Whole)	89	1,291	297	882	14,873
Hens	2	119	1,965	834	3,648
Other Chicken	2,102	11,456	14,849	34,397	320,344
Total	2,193	12,866	17,111	36,113	338,865
Whole Turkeys	9,699	46,806	35,586	39,695	65,480
Other Turkey	308	8,661	21,083	71,783	47,394
Total	10,007	55,467	56,669	111,478	112,874
Ducks	57	176	4,709	19	92
Total	12,257	68,509	78,489	147,610	451,831
Frozen Fruit					
Apples	19	24,543	30,191	121	444
Blueberries	7,807	7,670	19,992	307	3,905
Cherries, Tart (RSP)	51	7,295	141,216	72	180
Cherries, Sweet		597	12,071	68	106
Peaches	27	976	2,042	42	457
Raspberries, Red	381	1,172	518	183	68
Strawberries, Total	116	2,973	5,704	925	1,718
Other Frozen Fruit	76,534	21,138	129,869	580	1,017

See footnotes at end of table.

--continued

**Stocks in Cold Storage: By Commodity, Region,
and United States, July 31, 1999 (continued)**

Commodity	East South Central	West South Central	Mountain	Pacific	US Total
	<i>1,000 Pounds</i>	<i>1,000 Pounds</i>	<i>1,000 Pounds</i>	<i>1,000 Pounds</i>	<i>1,000 Pounds</i>
Nuts					
Shelled					
Peanuts	68,765	136,788	171	847	590,328
Pecans ¹	638	16,043		127	26,763
In-Shell					
Pecans ¹	1,402	21,135			25,272
Dairy Products					
Natural Cheese					
American, Total		363	13,518	58,722	554,533
Other Natural Cheese	212	236	1,558	8,954	197,515
Frozen Poultry					
Broilers (Whole)	1,732	11,434	250	3,334	34,182
Hens	2,212	279	185	814	10,058
Other Chicken	184,753	279,092	3,108	48,849	898,950
Total	188,697	290,805	3,543	52,997	943,190
Whole Turkeys	4,838	86,452	16,186	82,212	386,954
Other Turkey	757	39,105	4,103	21,809	215,003
Total	5,595	125,557	20,289	104,021	601,957
Ducks	61	31	2	188	5,335
Total	194,353	416,393	23,834	157,206	1,550,482
Frozen Fruit					
Apples	101	2,110	234	16,398	74,161
Blueberries	66	660	387	6,719	47,513
Cherries, Tart (RSP)	17	440	3,559	9,315	162,145
Cherries, Sweet	4	147	974	2,739	16,706
Peaches	51	817	150	17,137	21,699
Raspberries, Red	88	579	31	45,573	48,593
Strawberries, Total	4,491	20,396	6,046	334,836	377,205
Other Frozen Fruit	264	7,778	1,432	49,661	288,273

See footnotes at end of table.

--continued

**Stocks in Cold Storage: By Commodity, Region,
and United States, July 31, 1999 (continued)**

Commodity	New England	Middle Atlantic	East North Central	West North Central	South Atlantic
	<i>1,000 Pounds</i>	<i>1,000 Pounds</i>	<i>1,000 Pounds</i>	<i>1,000 Pounds</i>	<i>1,000 Pounds</i>
Frozen Juice					
Orange Juice Conc. ²	18		2,998	170	1,720,154
Other Juice Concentrate	780	18,439	13,056	2,315	147,366
Frozen Vegetables ³					
Asparagus		183	8,357	72	940
Limas, Fordhook		365	260	48	1,878
Limas, Baby		954	681	667	9,428
Green Beans, Reg. Cut		14,968	26,376	1,853	8,349
Green Beans, Fr. Style		4,990	2,477	248	656
Broccoli, Spears		4,248	159	2,096	4,556
Broccoli, Chopped & Cut		5,918	8,279	4,326	7,553
Brussels Sprouts		369	246	410	710
Carrots, Diced		2,823	4,125	992	16,037
Carrots, Other		4,388	5,614	1,266	10,643
Cauliflower		1,105	1,780	597	1,441
Corn, Cut		16,839	13,904	8,974	18,580
Corn, Cob		2,793	3,799	5,029	6,696
Mixed Vegetables		1,778	4,528	1,271	9,032
Okra		1,194	189	1,393	20,273
Onion Rings		527	8,362	1,263	1,398
Onions, Other		2,006	4,965	383	4,029
Blackeye Peas		115	246	14	2,999
Green Peas		45,840	26,594	18,885	14,739
Peas & Carrots Mixed		494	383	50	647
Spinach		10,328	1,914	915	13,101
Squash, Summer/Zucchini		820	9,127	521	16,891
Southern Greens		3,005	37	30	21,440
Other Vegetables		20,245	23,340	5,682	42,285
Potatoes					
French Fries	30,803	33,236	57,777	72,310	24,714
Other Frozen	9,044	9,394	36,719	4,289	8,213
Meat					
Frozen Beef					
Boneless ⁴	4,001	25,598	30,686	55,708	21,970
Beef Cuts ⁵	1,943	1,597	4,354	8,909	802
Frozen Pork					
Ribs ⁶	329	1,070	14,089	14,253	5,018
Trimming ⁷	316	1,517	8,989	19,953	7,202
Other ⁸	3,816	4,748	25,250	24,111	11,665
Other					
Veal	258	490	2,159	270	40
Lamb & Mutton	490	3,791	1,554	393	1,320

See footnotes at end of table.

--continued

**Stocks in Cold Storage: By Commodity, Region,
and United States, July 31, 1999 (continued)**

Commodity	East South Central	West South Central	Mountain	Pacific	US Total
	<i>1,000 Pounds</i>	<i>1,000 Pounds</i>	<i>1,000 Pounds</i>	<i>1,000 Pounds</i>	<i>1,000 Pounds</i>
Frozen Juice					
Orange Juice Concentrate	40	4,021	2,549	59,919	1,789,869
Other Juice Concentrate	2,291	15,573	491	149,213	349,524
Frozen Vegetables ³					
Asparagus		391	173	7,959	18,075
Limas, Fordhook		124		3,373	6,048
Limas, Baby		379	2,024	15,685	29,818
Green Beans, Reg. Cut		1,010	119	58,150	110,825
Green Beans, Fr. Style		220	75	19,244	27,910
Broccoli, Spears		22,809	2,555	16,116	52,539
Broccoli, Chopped & Cut		54,186	1,106	68,712	150,080
Brussels Sprouts		1,206	4	10,354	13,299
Carrots, Diced		1,463	135	18,943	44,518
Carrots, Other		9,861	1,236	80,360	113,368
Cauliflower		6,335	17	17,946	29,221
Corn, Cut		1,825	248	80,027	140,397
Corn, Cob		865	577	77,786	97,545
Mixed Vegetables		5,701	358	26,107	48,775
Okra		34,022		488	57,559
Onion Rings		683	194	1,414	13,841
Onions, Other		2,040	2,586	17,159	33,168
Blackeye Peas		736		153	4,263
Green Peas		2,723	20,496	220,459	349,736
Peas & Carrots Mixed		93	19	8,139	9,825
Spinach		13,672	11,026	80,203	131,159
Squash, Summer/Zucchini		7,470	101	21,358	56,288
Southern Greens		10,710		538	35,760
Other Vegetables		40,624	3,913	123,894	259,983
Potatoes					
French Fries	1,025	14,720	270,467	392,877	897,929
Other Frozen	75	7,598	50,482	117,864	243,678
Meat					
Frozen Beef					
Boneless ⁴	3,317	52,484	6,358	45,306	245,428
Beef Cuts ⁵	296	7,744	11,754	9,504	46,903
Frozen Pork					
Ribs ⁶	1,952	1,699	50	1,109	39,569
Trimmings ⁷	356	1,082	202	4,127	43,744
Other ⁸	8,135	20,962	264	4,613	103,564
Other					
Veal	38	89		725	4,069
Lamb & Mutton		1,525	844	2,058	11,975

¹ East North Central combined with South Atlantic. Mountain and West North Central Combined with West South Central.

² Middle Atlantic combined with South Atlantic.

³ New England combined with Middle Atlantic. East South Central combined with South Atlantic.

⁴ Includes all boxed boneless beef, such as ground beef, roasts, steaks, loins, strips, rounds, trimmings, etc. Variety meats (edible offal), such as tongues, livers, hearts, kidneys, and other organs removed from slaughtered beef, are included as miscellaneous freezer stocks.

⁵ Includes all boxed primal beef cuts, bone-in.

⁶ Includes spareribs and backribs.

⁷ Includes 42% regular trimmings, 72% special trimmings, boneless picnic meat, jowls, neckbone trimmings, blade, cheek, head, and shank meat, etc. Packaged bacon, sausage, and processed items, such as hot dogs and luncheon meats, are included in miscellaneous cooler or freezer stocks.

⁸ Includes ears, tails, feet, neckbones and snouts.

**Public General Warehouses: Cold Storage Space Occupied
by Region and United States, July 1999**

Region	Cooler				Freezer			
	Usable Space	Usable Space Occupied			Usable Space	Usable Space Occupied		
		Jul 31 1999	Jul 31 1998	Jun 30 1999		Jul 31 1999	Jul 31 1998	Jun 30 1999
	<i>1,000 Cu Ft</i>	<i>Percent</i>	<i>Percent</i>	<i>Percent</i>	<i>1,000 Cu Ft</i>	<i>Percent</i>	<i>Percent</i>	<i>Percent</i>
New England	2,436	58	63	63	20,251	73	70	70
Middle Atlantic	35,198	70	72	75	119,134	78	76	73
E. North Central	48,094	54	54	54	173,367	62	55	52
W. North Central	52,191	54	52	49	150,719	58	55	55
South Atlantic	52,168	61	53	52	164,175	53	57	60
E. South Central	8,604	50	60	64	61,961	59	49	52
W. South Central	21,003	55	47	46	133,208	71	70	69
Mountain	5,952	90	77	72	46,177	72	71	70
Pacific	35,568	41	44	40	242,234	71	64	68
US	261,214	57	55	54	1,111,226	65	62	62

Cold Storage Regions



Survey Procedures: Questionnaires are mailed about the 24th of each month to all operators on the list of approximately 1,400 public and private cold storage warehouses. In addition, apple data are obtained from special surveys and other sources (State Departments of Agriculture, U.S. Apple Association, etc.). All survey data represent stocks as of the end of the month.

Data are collected from warehouses artificially cooled to a temperature of 50 degrees Fahrenheit or lower, and whose food products are normally stored for 30 days or more. All food items in these facilities are reported regardless of the number of days stored at the time of the report. Also included are specialized storage facilities meeting the 30 day requirement, such as fruit houses, dairy manufacturing plants, frozen fruit, fruit juice, and vegetable processors, and poultry and meat packing plants. Excluded are stocks in space maintained by wholesalers, jobbers, distributors, chain stores, locker plants containing individual lockers, meat packer branch houses, and frozen food processors whose entire inventories are turned over more than once a month.

Estimating Procedures: Data for reporting firms are added to estimates for non-reporting firms to obtain regional and National totals. Estimates for non-reporting firms are obtained by multiplying the previous month's figure by a percent change from the previous month. The percent change is calculated for each item from totals of the current and previous month summed from firms that reported both months.

Revision Policy: Data are revised the following month based on late reports or corrected data. Final figures are published in the annual summary in February of the following year.

Reliability: Reports are received from 900 firms each month which represent about 70 percent of the total capacity. Firms that are not on the list or firms who have never reported are not represented in the data. Monthly data can vary due to different firms reporting month to month. Survey data are also subject to non-sampling errors such as omissions and mistakes in reporting and in processing the data. While these errors cannot be measured directly, they are minimized by carefully reviewing all reported data for consistency and reasonableness.

The next "Cold Storage" report will be released at 3 p.m. ET on September 20, 1999.

The United States Department of Agriculture (USDA) prohibits discrimination in all its programs on the basis of race, color, national origin, gender, religion, age, disability, political beliefs, sexual orientation, and marital or family status. (Not all prohibited bases apply to all programs.) Persons with disabilities who require alternative means for communication of program information (braille, large print, audiotape, etc.) should contact the USDA's TARGET Center at 202-720-2600 (voice and TDD).

To file a complaint of discrimination, write USDA, Director, Office of Civil Rights, Room 326-W, Whitten Building, 14th and Independence Avenue, SW, Washington, D.C., 20250-9410, or call 202-720-5964 (voice or TDD). USDA is an equal opportunity provider and employer.

ACCESS TO REPORTS!!

For your convenience, there are several ways to obtain NASS reports, data products, and services:

INTERNET ACCESS

All NASS reports are available free of charge on the worldwide Internet. For access, connect to the Internet and go to the NASS Home Page at: <http://www.usda.gov/nass/>. Select "Today's Reports" or Publications and then Reports by Calendar or Publications and then Search, by Title or Subject.

E-MAIL SUBSCRIPTION

There are two options for subscribing via e-mail. All NASS reports are available by subscription free of charge direct to your e-mail address. 1) Starting with the NASS Home Page at <http://www.usda.gov/nass/>, click on **Publications**, then click on the **Subscribe by E-mail** button which takes you to the page describing e-mail delivery of reports. Finally, click on **Go to the Subscription Page** and follow the instructions. 2) If you do NOT have Internet access, send an e-mail message to: usda-reports@usda.mannlib.cornell.edu. In the body of the message type the word: **list**.

AUTOFAX ACCESS

NASSFax service is available for some reports from your fax machine. Please call 202-720-2000, using the handset attached to your fax. Respond to the voice prompts. Document 0411 is a list of available reports.

PRINTED REPORTS OR DATA PRODUCTS

CALL OUR TOLL-FREE ORDER DESK: 800-999-6779 (U.S. and Canada)
Other areas, please call 703-834-0125 FAX: 703-834-0110
(Visa, MasterCard, check, or money order acceptable for payment.)

ASSISTANCE

For **assistance** with general agricultural statistics or further information about NASS or its products or services, contact the **Agricultural Statistics Hotline** at **800-727-9540**, 7:30 a.m. to 4:00 p.m. ET, or e-mail: nass@nass.usda.gov.

USDA to Hold Public Forum
October 18, 1999

Holiday Inn Mart Plaza
Chicago, Illinois

The National Agricultural Statistics Service will be organizing an open forum for Data Users. The purpose will be to provide updates on pending changes in the USDA statistical and information programs, and to seek comments and input from data users. Other agencies to be represented will include the Agricultural Marketing Service, the Economic Research Service, the Foreign Agricultural Service, and the World Agricultural Outlook Board.

For registration details, see the NASS home page at <http://www.usda.gov/nass/> or contact Fred Vogel (NASS) at (202) 720-3896 or at hq_ed_od@nass.usda.gov