



Cold Storage

Released September 20, 1999, by the National Agricultural Statistics Service (NASS), Agricultural Statistics Board, U.S. Department of Agriculture. For information on "Cold Storage" call Linda Simpson at (202) 720-8784, office hours 7:00 a.m. to 4:30 p.m. ET.

HIGHLIGHTS

Frozen food stocks in refrigerated warehouses on August 31, 1999 were greater than year earlier levels for butter, chicken, fruit, and pork. Total frozen pork stocks, at 436 million pounds, broke the previous record August high of 393 million pounds set in 1998. Likewise, August 1999 stocks of chicken, at 850 million pounds, also broke the previous record August high of 616 million pounds set in 1996. Fruit also set a new August record high. Cooler stocks of peanuts were also higher than a year earlier.

Total red meat supplies in freezers were down 8 percent from July 1999, but were 3 percent above August 1998. Frozen pork stocks were 13 percent below last month, but were up 11 percent from last year. Stocks of pork bellies decreased 50 percent from last month, but were more than double the August 1998 stocks.

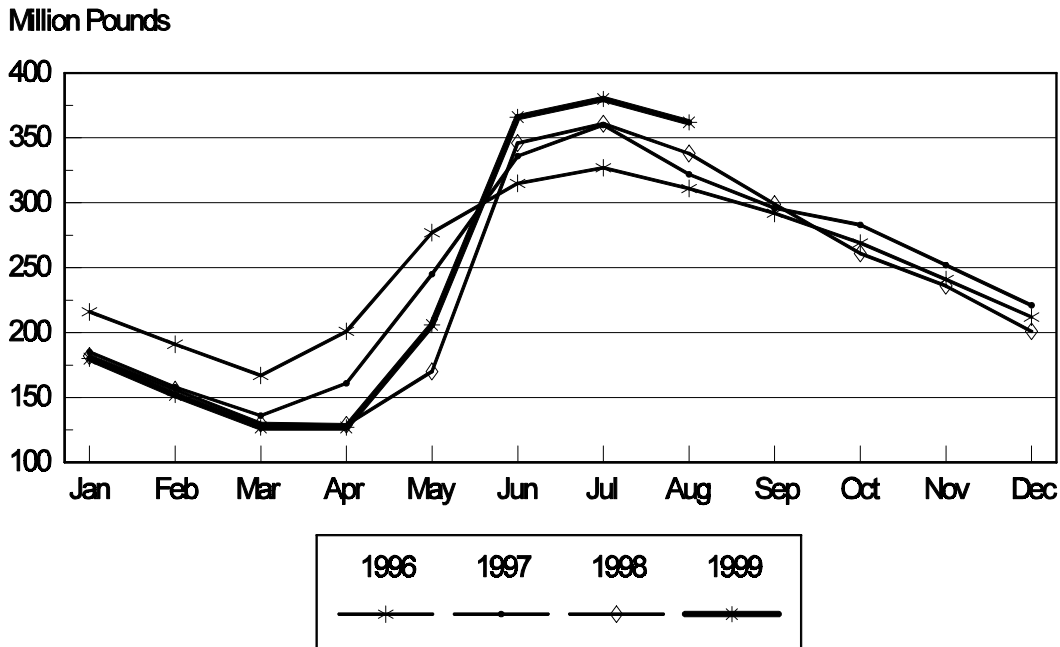
Total frozen poultry supplies were down 7 percent from last month, but were 12 percent above last year's level. Total stocks of chicken were down 10 percent from last month, but were 50 percent above August 1998. Total pounds of turkey in freezers decreased 3 percent from last month and were 18 percent below last year.

Public cooler occupancy was at 52 percent of capacity, down 4 points from last year. Public freezer occupancy at 64 percent was 2 percentage points below last year.

Table of Contents

| | Page |
|--|------|
| Stocks in Cold Storage: By Commodity, United States, August 1999 | 3 |
| Stocks in Cold Storage: By Commodity, Region, and United States, August 31, 1999 | 6 |
| Stocks in Cold Storage: By Commodity, Region, and United States, August 31, 1999. | 10 |
| Public General Warehouses: Cold Storage Space Occupied by Region and United States, August 1999 | 14 |
| Survey and Estimating Procedures, Revision Policy and Reliability | 15 |

Frozen Strawberries Cold Storage Stocks, 1996 - 1999 United States



**Stocks in Cold Storage: By Commodity,
United States, August 1999**

| Commodity | Stocks in All Warehouses | | | Percent of | | Public Warehouse Stocks |
|-----------------------|--------------------------|---------------------|---------------------|----------------|----------------|-------------------------|
| | Aug 31, 1998 | Jul 31, 1999 | Aug 31, 1999 | Aug 1998 | Jul 1999 | Aug 31, 1999 |
| | <i>1,000 Pounds</i> | <i>1,000 Pounds</i> | <i>1,000 Pounds</i> | <i>Percent</i> | <i>Percent</i> | <i>1,000 Lbs</i> |
| Fresh Fruit | | | | | | |
| Apples | | | | | | |
| Regular Storage | 65,277 | 11,564 | 13,644 | 21 | 118 | |
| Controlled Atmosphere | 67,383 | 349,281 | 85,514 | 127 | 24 | |
| Total | 132,660 | 360,845 | 99,158 | 75 | 27 | 4,205 |
| Pears | | | | | | |
| Bartlett | 92,041 | 11,450 | 94,745 | 103 | 827 | |
| Other Varieties | 2,220 | 116 | 4,768 | 215 | | |
| Total | 94,261 | 11,566 | 99,513 | 106 | 860 | 22,208 |
| Nuts | | | | | | |
| Shelled | | | | | | |
| Peanuts | 273,627 | 590,286 | 528,440 | 193 | 90 | |
| Pecans | 47,257 | 26,764 | 24,249 | 51 | 91 | |
| Other Shelled | 101,793 | 112,128 | 76,645 | 75 | 68 | |
| Total | 422,677 | 729,178 | 629,334 | 149 | 86 | 375,023 |
| In-Shell | | | | | | |
| Peanuts | 11,286 | 26,149 | 18,625 | 165 | 71 | |
| Pecans | 73,567 | 25,291 | 17,571 | 24 | 69 | |
| Other In-Shell | 4,196 | 2,013 | 1,888 | 45 | 94 | |
| Total | 89,049 | 53,453 | 38,084 | 43 | 71 | 12,011 |
| Dairy Products | | | | | | |
| Butter, Total | 41,070 | 123,552 | 95,384 | 232 | 77 | 81,312 |
| (Government Owned) | 216 | 334 | 257 | 119 | 77 | |
| Natural Cheese | | | | | | |
| American, Total | 441,605 | 545,023 | 508,752 | 115 | 93 | |
| (Government Owned) | 209 | 48 | 31 | 15 | 65 | |
| Swiss | 11,560 | 10,698 | 10,280 | 89 | 96 | |
| Other Natural Cheese | 123,603 | 194,573 | 174,043 | 141 | 89 | |
| Total | 576,768 | 750,294 | 693,075 | 120 | 92 | 417,896 |
| Eggs, Frozen | | | | | | |
| Whites | 915 | 707 | 687 | 75 | 97 | |
| Yolks | 933 | 861 | 677 | 73 | 79 | |
| Whole & Mixed | 5,802 | 7,964 | 6,203 | 107 | 78 | |
| Unclassified | 1,343 | 1,600 | 1,211 | 90 | 76 | |
| Total | 8,993 | 11,132 | 8,778 | 98 | 79 | 8,346 |
| Frozen Poultry | | | | | | |
| Chicken | | | | | | |
| Broilers (Whole) | 12,037 | 34,794 | 31,433 | 261 | 90 | |
| Hens | 8,822 | 10,362 | 11,067 | 125 | 107 | |
| Other Chicken | 545,143 | 894,612 | 807,857 | 148 | 90 | |
| Total | 566,002 | 939,768 | 850,357 | 150 | 90 | |
| Turkey | | | | | | |
| Whole Turkeys | 462,814 | 384,022 | 364,359 | 79 | 95 | |
| Other Turkey | 244,013 | 214,991 | 213,713 | 88 | 99 | |
| Total | 706,827 | 599,013 | 578,072 | 82 | 97 | |
| Ducks | 5,597 | 5,335 | 5,238 | 94 | 98 | |
| Total | 1,278,426 | 1,544,116 | 1,433,667 | 112 | 93 | 1,329,097 |

**Stocks in Cold Storage: By Commodity,
United States, August 1999 (Continued)**

| Commodity | Stocks in All Warehouses | | | Percent of | | Public Warehouse Stocks |
|---------------------------------|--------------------------|---------------------|---------------------|----------------|----------------|-------------------------|
| | Aug 31, 1998 | Jul 31, 1999 | Aug 31, 1999 | Aug 1998 | Jul 1999 | Aug 31, 1999 |
| | <i>1,000 Pounds</i> | <i>1,000 Pounds</i> | <i>1,000 Pounds</i> | <i>Percent</i> | <i>Percent</i> | <i>1,000 Lbs</i> |
| Frozen Fruit | | | | | | |
| Apples | 52,656 | 74,147 | 61,749 | 117 | 83 | |
| Apricots | 19,899 | 16,387 | 14,120 | 71 | 86 | |
| Blackberries, Total | 32,132 | 24,896 | 29,958 | 93 | 120 | |
| IQF | 17,912 | 15,228 | 19,011 | 106 | 125 | |
| Pails and Tubs | 3,723 | 2,759 | 2,365 | 64 | 86 | |
| Barrels, 400 lbs net | 9,125 | 6,017 | 7,479 | 82 | 124 | |
| Concentrate | 1,372 | 892 | 1,103 | 80 | 124 | |
| Blueberries | 102,064 | 47,525 | 97,790 | 96 | 206 | |
| Boysenberries | 6,562 | 7,748 | 7,867 | 120 | 102 | |
| Cherries, Tart (RSP) | 165,591 | 162,135 | 156,654 | 95 | 97 | |
| Cherries, Tart (Juice) | 7,045 | 3,826 | 4,853 | 69 | 127 | |
| Cherries, Sweet | 17,426 | 16,701 | 16,505 | 95 | 99 | |
| Grapes | 565 | 1,402 | 1,768 | 313 | 126 | |
| Peaches | 47,888 | 20,840 | 62,288 | 130 | 299 | |
| Raspberries, Black | 1,318 | 2,704 | 2,018 | 153 | 75 | |
| Raspberries, Red, Total | 60,571 | 55,291 | 70,266 | 116 | 127 | |
| IQF | 14,158 | 17,157 | 19,228 | 136 | 112 | |
| Pails and Tubs | 14,233 | 14,396 | 17,038 | 120 | 118 | |
| Barrels, 400 lbs net | 29,556 | 22,456 | 32,537 | 110 | 145 | |
| Concentrate | 2,624 | 1,282 | 1,463 | 56 | 114 | |
| Strawberries, Total | 338,241 | 379,518 | 362,425 | 107 | 95 | |
| Other Frozen Fruit | 176,326 | 288,369 | 278,449 | 158 | 97 | |
| Total | 1,028,284 | 1,101,489 | 1,166,710 | 113 | 106 | 823,666 |
| Frozen Juice | | | | | | |
| Orange Juice Conc. ¹ | 2,025,083 | 1,822,978 | 1,615,442 | 80 | 89 | |
| (Gallon Equivalent) | 204,637 | 184,214 | 163,242 | | | |
| Other Juice Concentrate | 434,375 | 351,086 | 367,260 | 85 | 105 | |
| Total | 2,459,458 | 2,174,064 | 1,982,702 | 81 | 91 | 230,839 |
| Frozen Vegetables | | | | | | |
| Asparagus | 9,957 | 18,071 | 17,020 | 171 | 94 | |
| Limas, Fordhook | 13,373 | 6,048 | 8,238 | 62 | 136 | |
| Limas, Baby | 31,074 | 29,828 | 30,759 | 99 | 103 | |
| Green Beans, Reg. Cut | 208,884 | 111,933 | 182,345 | 87 | 163 | |
| Green Beans, Fr. Style | 44,667 | 27,910 | 38,586 | 86 | 138 | |
| Broccoli, Spears | 21,730 | 52,559 | 51,207 | 236 | 97 | |
| Broccoli, Chopped & Cut | 85,192 | 150,122 | 141,997 | 167 | 95 | |
| Brussels Sprouts | 4,562 | 13,306 | 9,553 | 209 | 72 | |
| Carrots, Diced | 26,609 | 44,520 | 43,202 | 162 | 97 | |
| Carrots, Other | 127,370 | 113,375 | 117,841 | 93 | 104 | |
| Cauliflower | 31,565 | 29,224 | 29,549 | 94 | 101 | |
| Corn, Cut | 306,205 | 140,420 | 230,858 | 75 | 164 | |
| Corn, Cob | 167,416 | 98,635 | 156,116 | 93 | 158 | |
| Mixed Vegetables | 47,541 | 48,651 | 47,427 | 100 | 97 | |
| Okra | 70,342 | 57,424 | 62,263 | 89 | 108 | |
| Onion Rings | 13,182 | 13,838 | 14,003 | 106 | 101 | |
| Onions, Other | 18,755 | 33,171 | 30,554 | 163 | 92 | |
| Blackeye Peas | 8,786 | 4,297 | 6,520 | 74 | 152 | |
| Green Peas | 406,024 | 350,191 | 386,156 | 95 | 110 | |
| Peas & Carrots Mixed | 7,456 | 9,827 | 9,623 | 129 | 98 | |
| Spinach | 74,491 | 131,132 | 112,060 | 150 | 85 | |
| Squash, Summer/Zucchini | 78,207 | 56,249 | 62,435 | 80 | 111 | |
| Southern Greens | 22,745 | 25,962 | 19,833 | 87 | 76 | |
| Other Vegetables | 293,211 | 257,931 | 295,998 | 101 | 115 | |
| Total | 2,119,344 | 1,824,624 | 2,104,143 | 99 | 115 | 1,354,648 |

See footnotes at end of table.

--continued

**Stocks in Cold Storage: By Commodity,
United States, August 1999 (Continued)**

| Commodity | Stocks in All Warehouses | | | Percent of | | Public Warehouse Stocks |
|----------------------------|--------------------------|---------------------|---------------------|----------------|----------------|-------------------------|
| | Aug 31, 1998 | Jul 31, 1999 | Aug 31, 1999 | Aug 1998 | Jul 1999 | Aug 31, 1999 |
| | <i>1,000 Pounds</i> | <i>1,000 Pounds</i> | <i>1,000 Pounds</i> | <i>Percent</i> | <i>Percent</i> | <i>1,000 Lbs</i> |
| Potatoes | | | | | | |
| French Fries | 938,463 | 900,347 | 929,679 | 99 | 103 | |
| Other Frozen | 265,998 | 241,931 | 242,740 | 91 | 100 | |
| Total | 1,204,461 | 1,142,278 | 1,172,419 | 97 | 103 | 845,951 |
| Meat | | | | | | |
| Frozen Beef | | | | | | |
| Boneless ² | 273,895 | 245,393 | 243,793 | 89 | 99 | |
| Beef Cuts ³ | 32,854 | 46,909 | 48,426 | 147 | 103 | |
| Total | 306,749 | 292,302 | 292,219 | 95 | 100 | 289,253 |
| (Government Owned) | 2,161 | 3,476 | 3,848 | 178 | 111 | |
| Frozen Pork | | | | | | |
| Picnics, Bone-in | 10,457 | 6,214 | 10,531 | 101 | 169 | |
| Hams, Total | 104,565 | 135,017 | 132,656 | 127 | 98 | 125,536 |
| Bone-in | 66,988 | 76,561 | 85,560 | 128 | 112 | 83,341 |
| Boneless ⁴ | 37,577 | 58,456 | 47,096 | 125 | 81 | 42,195 |
| Bellies | 14,786 | 69,675 | 34,965 | 236 | 50 | |
| Loins, Total | 15,532 | 22,847 | 17,418 | 112 | 76 | 14,087 |
| Bone-in | 8,205 | 12,000 | 8,655 | 105 | 72 | |
| Boneless ⁵ | 7,327 | 10,847 | 8,763 | 120 | 81 | |
| Ribs ⁶ | 36,228 | 39,571 | 31,822 | 88 | 80 | |
| Butts | 8,284 | 9,207 | 5,614 | 68 | 61 | |
| Trimmings ⁷ | 57,379 | 43,634 | 39,574 | 69 | 91 | |
| Other ⁸ | 78,796 | 103,487 | 92,177 | 117 | 89 | |
| Variety Meats ⁹ | 49,060 | 59,694 | 59,881 | 122 | 100 | |
| Unclassified ¹⁰ | 17,468 | 10,666 | 11,261 | 64 | 106 | |
| Total | 392,555 | 500,012 | 435,899 | 111 | 87 | 380,862 |
| (Government Owned) | 1,914 | 6,144 | 6,584 | 344 | 107 | |
| Other | | | | | | |
| Veal | 4,864 | 4,069 | 4,366 | 90 | 107 | |
| Lamb & Mutton | 14,530 | 11,975 | 12,241 | 84 | 102 | |
| Total | 19,394 | 16,044 | 16,607 | 86 | 104 | 16,484 |
| Canned | | | | | | |
| Canned Hams | 8,892 | 6,235 | 7,019 | 79 | 113 | |
| Other Canned Meat | 657 | 760 | 752 | 114 | 99 | |
| Total | 9,549 | 6,995 | 7,771 | 81 | 111 | 3,844 |
| Total | 728,247 | 815,353 | 752,496 | 103 | 92 | 690,443 |
| Miscellaneous | | | | | | |
| Cooler | 620,824 | 700,653 | 709,496 | 114 | 101 | 441,911 |
| Freezer | 1,916,932 | 2,012,031 | 1,982,464 | 103 | 99 | 1,901,115 |
| Total | 2,537,756 | 2,712,684 | 2,691,960 | 106 | 99 | 2,343,026 |
| Commodities | | | | | | |
| Stored in Coolers | 1,945,788 | 2,612,984 | 2,276,431 | 117 | 87 | 1,277,098 |
| Stored in Freezers | 10,775,666 | 10,741,644 | 10,690,992 | 99 | 100 | 7,261,573 |
| Total | 12,721,454 | 13,354,628 | 12,967,423 | 102 | 97 | 8,538,671 |

¹ Adjusted to 42.0 degrees Brix equivalent (9.896 pounds per gallon).

² Includes all boxed boneless beef, such as ground beef, roasts, steaks, loins, strips, rounds, trimmings, etc. Variety meats (edible offal), such as tongues, livers, hearts, kidneys, and other organs removed from slaughtered beef, are included as miscellaneous freezer stocks.

³ Includes all boxed primal beef cuts, bone-in.

⁴ Includes full ham, bone removed and individual muscles separated.

⁵ Includes pork tenderloins.

⁶ Includes spareribs and backribs.

⁷ Includes 42% regular trimmings, 72% special trimmings, boneless picnic meat, jowls, neckbone trimmings, blade, cheek, head, and shank meat, etc. Packaged bacon, sausage, and processed items, such as hot dogs and luncheon meats, are included in miscellaneous cooler or freezer stocks.

⁸ Includes ears, tails, feet, neckbones and snouts.

⁹ Includes tongues, kidneys, livers, stomachs, hearts, chitterlings, salivary glands, and other organs removed from slaughtered hogs.

¹⁰ Includes pork unable to be classified elsewhere in this report.

**Stocks in Cold Storage: By Commodity, Region,
and United States, July 31, 1999**

| Commodity | New England | Middle Atlantic | East North Central | West North Central | South Atlantic |
|----------------------|---------------------|---------------------|--------------------------|--------------------------|---------------------|
| | <i>1,000 Pounds</i> | <i>1,000 Pounds</i> | <i>1,000 Pounds</i> | <i>1,000 Pounds</i> | <i>1,000 Pounds</i> |
| Nuts | | | | | |
| Shelled | | | | | |
| Peanuts | | 7 | 161 | 35 | 383,629 |
| Pecans ¹ | | 98 | | | 9,854 |
| In-Shell | | | | | |
| Pecans ¹ | | | | | 2,735 |
| Dairy Products | | | | | |
| Natural Cheese | | | | | |
| American, Total | 29,640 | 49,555 | 257,191 | 131,232 | 625 |
| Other Natural Cheese | 559 | 14,072 | 97,666 | 70,090 | 1,501 |
| Frozen Poultry | | | | | |
| Broilers (Whole) | 89 | 1,291 | 297 | 882 | 15,393 |
| Hens | 2 | 119 | 1,965 | 834 | 3,648 |
| Other Chicken | 2,102 | 11,458 | 14,850 | 34,397 | 322,990 |
| Total | 2,193 | 12,868 | 17,112 | 36,113 | 342,031 |
| Whole Turkeys | 9,699 | 45,600 | 35,586 | 39,695 | 65,480 |
| Other Turkey | 308 | 8,668 | 21,049 | 71,783 | 47,385 |
| Total | 10,007 | 54,268 | 56,635 | 111,478 | 112,865 |
| Ducks | 57 | 176 | 4,709 | 19 | 92 |
| Total | 12,257 | 67,312 | 78,456 | 147,610 | 454,988 |
| Frozen Fruit | | | | | |
| Apples | 19 | 24,535 | 30,191 | 121 | 444 |
| Blueberries | 7,807 | 7,679 | 20,065 | 307 | 3,903 |
| Cherries, Tart (RSP) | 51 | 7,295 | 141,216 | 72 | 178 |
| Cherries, Sweet | | 597 | 12,071 | 68 | 106 |
| Peaches | 27 | 976 | 2,117 | 42 | 457 |
| Raspberries, Red | 381 | 1,167 | 543 | 183 | 68 |
| Strawberries, Total | 116 | 2,974 | 5,260 | 925 | 1,718 |
| Other Frozen Fruit | 76,534 | 21,141 | 129,963 | 580 | 1,228 |

See footnotes at end of table.

--continued

**Stocks in Cold Storage: By Commodity, Region,
and United States, July 31, 1999 (continued)**

| Commodity | East South Central | West South Central | Mountain | Pacific | US Total |
|----------------------|--------------------------|--------------------------|---------------------|---------------------|---------------------|
| | <i>1,000 Pounds</i> | <i>1,000 Pounds</i> | <i>1,000 Pounds</i> | <i>1,000 Pounds</i> | <i>1,000 Pounds</i> |
| Nuts | | | | | |
| Shelled | | | | | |
| Peanuts | 68,766 | 136,788 | 179 | 721 | 590,286 |
| Pecans ¹ | 639 | 16,045 | | 128 | 26,764 |
| In-Shell | | | | | |
| Pecans ¹ | 1,421 | 21,135 | | | 25,291 |
| Dairy Products | | | | | |
| Natural Cheese | | | | | |
| American, Total | | 363 | 11,734 | 64,683 | 545,023 |
| Other Natural Cheese | 212 | 236 | 1,096 | 9,141 | 194,573 |
| Frozen Poultry | | | | | |
| Broilers (Whole) | 1,732 | 11,512 | 264 | 3,334 | 34,794 |
| Hens | 2,212 | 575 | 193 | 814 | 10,362 |
| Other Chicken | 184,752 | 272,115 | 3,101 | 48,847 | 894,612 |
| Total | 188,696 | 284,202 | 3,558 | 52,995 | 939,768 |
| Whole Turkeys | 4,838 | 84,832 | 16,080 | 82,212 | 384,022 |
| Other Turkey | 762 | 39,105 | 4,116 | 21,815 | 214,991 |
| Total | 5,600 | 123,937 | 20,196 | 104,027 | 599,013 |
| Ducks | 61 | 31 | 2 | 188 | 5,335 |
| Total | 194,357 | 408,170 | 23,756 | 157,210 | 1,544,116 |
| Frozen Fruit | | | | | |
| Apples | 101 | 2,110 | 234 | 16,392 | 74,147 |
| Blueberries | 66 | 660 | 372 | 6,666 | 47,525 |
| Cherries, Tart (RSP) | 17 | 440 | 3,551 | 9,315 | 162,135 |
| Cherries, Sweet | 4 | 147 | 971 | 2,737 | 16,701 |
| Peaches | 51 | 817 | 152 | 16,201 | 20,840 |
| Raspberries, Red | 88 | 579 | 30 | 52,252 | 55,291 |
| Strawberries, Total | 4,490 | 20,396 | 6,046 | 337,593 | 379,518 |
| Other Frozen Fruit | 263 | 8,778 | 1,435 | 48,447 | 288,369 |

See footnotes at end of table.

--continued

**Stocks in Cold Storage: By Commodity, Region,
and United States, July 31, 1999 (continued)**

| Commodity | New England | Middle Atlantic | East North Central | West North Central | South Atlantic |
|---------------------------------|---------------------|---------------------|--------------------------|--------------------------|---------------------|
| | <i>1,000 Pounds</i> | <i>1,000 Pounds</i> | <i>1,000 Pounds</i> | <i>1,000 Pounds</i> | <i>1,000 Pounds</i> |
| Frozen Juice | | | | | |
| Orange Juice Conc. ² | 18 | | 2,998 | 170 | 1,753,259 |
| Other Juice Concentrate | 780 | 18,442 | 12,995 | 2,315 | 148,984 |
| Frozen Vegetables ³ | | | | | |
| Asparagus | | 183 | 8,357 | 72 | 936 |
| Limas, Fordhook | | 365 | 260 | 48 | 1,878 |
| Limas, Baby | | 954 | 681 | 667 | 9,436 |
| Green Beans, Reg. Cut | | 14,969 | 26,376 | 1,853 | 9,456 |
| Green Beans, Fr. Style | | 4,990 | 2,477 | 248 | 656 |
| Broccoli, Spears | | 4,247 | 181 | 2,096 | 4,555 |
| Broccoli, Chopped & Cut | | 5,918 | 8,340 | 4,326 | 7,534 |
| Brussels Sprouts | | 369 | 252 | 410 | 711 |
| Carrots, Diced | | 2,823 | 4,125 | 992 | 16,039 |
| Carrots, Other | | 4,388 | 5,614 | 1,266 | 10,650 |
| Cauliflower | | 1,105 | 1,783 | 597 | 1,441 |
| Corn, Cut | | 16,839 | 13,915 | 8,974 | 18,588 |
| Corn, Cob | | 3,875 | 3,799 | 5,029 | 6,704 |
| Mixed Vegetables | | 1,778 | 4,505 | 1,271 | 8,932 |
| Okra | | 1,194 | 189 | 1,393 | 20,138 |
| Onion Rings | | 527 | 8,362 | 1,263 | 1,395 |
| Onions, Other | | 2,006 | 4,965 | 383 | 4,029 |
| Blackeye Peas | | 115 | 246 | 14 | 3,033 |
| Green Peas | | 46,334 | 26,594 | 18,885 | 14,722 |
| Peas & Carrots Mixed | | 494 | 383 | 50 | 649 |
| Spinach | | 10,328 | 1,872 | 915 | 13,116 |
| Squash, Summer/Zucchini | | 820 | 9,127 | 521 | 16,852 |
| Southern Greens | | 3,005 | 37 | 30 | 11,642 |
| Other Vegetables | | 21,214 | 22,921 | 5,682 | 41,871 |
| Potatoes | | | | | |
| French Fries | 30,803 | 33,249 | 60,179 | 72,310 | 24,714 |
| Other Frozen | 9,044 | 9,394 | 34,969 | 4,289 | 8,213 |
| Meat | | | | | |
| Frozen Beef | | | | | |
| Boneless | 4,001 | 25,598 | 30,629 | 55,708 | 21,982 |
| Beef Cuts | 1,943 | 1,597 | 4,360 | 8,909 | 802 |
| Frozen Pork | | | | | |
| Ribs | 329 | 1,070 | 14,089 | 14,253 | 5,020 |
| Trimming | 316 | 1,517 | 8,871 | 19,953 | 7,202 |
| Other | 3,816 | 4,747 | 25,174 | 24,111 | 11,665 |
| Other | | | | | |
| Veal | 258 | 490 | 2,159 | 270 | 40 |
| Lamb & Mutton | 490 | 3,791 | 1,554 | 393 | 1,320 |

See footnotes at end of table.

--continued

**Stocks in Cold Storage: By Commodity, Region,
and United States, July 31, 1999 (continued)**

| Commodity | East South Central | West South Central | Mountain | Pacific | US Total |
|--------------------------------|--------------------------|--------------------------|---------------------|---------------------|---------------------|
| | <i>1,000 Pounds</i> | <i>1,000 Pounds</i> | <i>1,000 Pounds</i> | <i>1,000 Pounds</i> | <i>1,000 Pounds</i> |
| Frozen Juice | | | | | |
| Orange Juice Concentrate | 40 | 4,021 | 2,553 | 59,919 | 1,822,978 |
| Other Juice Concentrate | 2,291 | 15,573 | 493 | 149,213 | 351,086 |
| Frozen Vegetables ³ | | | | | |
| Asparagus | | 391 | 173 | 7,959 | 18,071 |
| Limas, Fordhook | | 124 | | 3,373 | 6,048 |
| Limas, Baby | | 381 | 2,024 | 15,685 | 29,828 |
| Green Beans, Reg. Cut | | 1,010 | 119 | 58,150 | 111,933 |
| Green Beans, Fr. Style | | 220 | 75 | 19,244 | 27,910 |
| Broccoli, Spears | | 22,809 | 2,555 | 16,116 | 52,559 |
| Broccoli, Chopped & Cut | | 54,186 | 1,106 | 68,712 | 150,122 |
| Brussels Sprouts | | 1,206 | 4 | 10,354 | 13,306 |
| Carrots, Diced | | 1,463 | 135 | 18,943 | 44,520 |
| Carrots, Other | | 9,861 | 1,236 | 80,360 | 113,375 |
| Cauliflower | | 6,335 | 17 | 17,946 | 29,224 |
| Corn, Cut | | 1,825 | 252 | 80,027 | 140,420 |
| Corn, Cob | | 865 | 577 | 77,786 | 98,635 |
| Mixed Vegetables | | 5,701 | 357 | 26,107 | 48,651 |
| Okra | | 34,022 | | 488 | 57,424 |
| Onion Rings | | 683 | 194 | 1,414 | 13,838 |
| Onions, Other | | 2,040 | 2,589 | 17,159 | 33,171 |
| Blackeye Peas | | 736 | | 153 | 4,297 |
| Green Peas | | 2,723 | 20,474 | 220,459 | 350,191 |
| Peas & Carrots Mixed | | 93 | 19 | 8,139 | 9,827 |
| Spinach | | 13,672 | 11,026 | 80,203 | 131,132 |
| Squash, Summer/Zucchini | | 7,470 | 101 | 21,358 | 56,249 |
| Southern Greens | | 10,710 | | 538 | 25,962 |
| Other Vegetables | | 38,624 | 3,908 | 123,711 | 257,931 |
| Potatoes | | | | | |
| French Fries | 1,025 | 14,720 | 270,471 | 392,876 | 900,347 |
| Other Frozen | 75 | 7,598 | 50,485 | 117,864 | 241,931 |
| Meat | | | | | |
| Frozen Beef | | | | | |
| Boneless ⁴ | 3,317 | 52,484 | 6,367 | 45,307 | 245,393 |
| Beef Cuts ⁵ | 296 | 7,744 | 11,754 | 9,504 | 46,909 |
| Frozen Pork | | | | | |
| Ribs ⁶ | 1,952 | 1,699 | 50 | 1,109 | 39,571 |
| Trimmings ⁷ | 356 | 1,082 | 202 | 4,135 | 43,634 |
| Other ⁸ | 8,135 | 20,962 | 264 | 4,613 | 103,487 |
| Other | | | | | |
| Veal | 38 | 89 | | 725 | 4,069 |
| Lamb & Mutton | | 1,525 | 844 | 2,058 | 11,975 |

¹ East North Central combined with South Atlantic. Mountain and West North Central combined with West South Central.

² Middle Atlantic combined with South Atlantic.

³ New England combined with Middle Atlantic. East South Central combined with South Atlantic.

⁴ Includes all boxed boneless beef, such as ground beef, roasts, steaks, loins, strips, rounds, trimmings, etc. Variety meats (edible offal), such as tongues, livers, hearts, kidneys, and other organs removed from slaughtered beef, are included as miscellaneous freezer stocks.

⁵ Includes all boxed primal beef cuts, bone-in.

⁶ Includes spareribs and backribs.

⁷ Includes 42% regular trimmings, 72% special trimmings, boneless picnic meat, jowls, neckbone trimmings, blade, cheek, head, and shank meat, etc. Packaged bacon, sausage, and processed items, such as hot dogs and luncheon meats, are included in miscellaneous cooler or freezer stocks.

⁸ Includes ears, tails, feet, neckbones and snouts.

**Stocks in Cold Storage: By Commodity, Region,
and United States, August 31, 1999**

| Commodity | New England | Middle Atlantic | East North Central | West North Central | South Atlantic |
|----------------------|---------------------|---------------------|--------------------------|--------------------------|---------------------|
| | <i>1,000 Pounds</i> | <i>1,000 Pounds</i> | <i>1,000 Pounds</i> | <i>1,000 Pounds</i> | <i>1,000 Pounds</i> |
| Nuts | | | | | |
| Shelled | | | | | |
| Peanuts | | 5 | 134 | 29 | 348,982 |
| Pecans ¹ | | 81 | | | 9,085 |
| In-Shell | | | | | |
| Pecans ¹ | | 10 | | | 1,957 |
| Dairy Products | | | | | |
| Natural Cheese | | | | | |
| American, Total | 28,314 | 45,344 | 244,505 | 116,396 | 398 |
| Other Natural Cheese | 661 | 13,285 | 89,715 | 59,450 | 1,374 |
| Frozen Poultry | | | | | |
| Broilers (Whole) | 80 | 348 | 260 | 1,173 | 12,666 |
| Hens | 2 | 121 | 1,965 | 2,239 | 3,187 |
| Other Chicken | 1,812 | 6,552 | 13,270 | 30,558 | 271,074 |
| Total | 1,894 | 7,021 | 15,495 | 33,970 | 286,927 |
| Whole Turkeys | 12,216 | 42,813 | 37,910 | 42,260 | 60,883 |
| Other Turkey | 317 | 11,671 | 20,159 | 63,826 | 54,530 |
| Total | 12,533 | 54,484 | 58,069 | 106,086 | 115,413 |
| Ducks | 63 | 137 | 4,399 | 166 | 97 |
| Total | 14,490 | 61,642 | 77,963 | 140,222 | 402,437 |
| Frozen Fruit | | | | | |
| Apples | 31 | 20,722 | 25,262 | 98 | 223 |
| Blueberries | 17,279 | 11,163 | 49,211 | 319 | 3,750 |
| Cherries, Tart (RSP) | 45 | 9,424 | 131,856 | 46 | 171 |
| Cherries, Sweet | | 739 | 11,568 | 71 | 60 |
| Peaches | 32 | 2,479 | 3,374 | 53 | 405 |
| Raspberries, Red | 379 | 1,410 | 766 | 158 | 73 |
| Strawberries, Total | 76 | 3,180 | 5,483 | 1,404 | 1,451 |
| Other Frozen Fruit | 69,016 | 18,156 | 124,306 | 623 | 1,121 |

See footnotes at end of table.

--continued

**Stocks in Cold Storage: By Commodity, Region,
and United States, August 31, 1999 (continued)**

| Commodity | East South Central | West South Central | Mountain | Pacific | US Total |
|----------------------|--------------------------|--------------------------|---------------------|---------------------|---------------------|
| | <i>1,000 Pounds</i> | <i>1,000 Pounds</i> | <i>1,000 Pounds</i> | <i>1,000 Pounds</i> | <i>1,000 Pounds</i> |
| Nuts | | | | | |
| Shelled | | | | | |
| Peanuts | 48,709 | 129,831 | 151 | 599 | 528,440 |
| Pecans ¹ | 507 | 14,458 | | 118 | 24,249 |
| In-Shell | | | | | |
| Pecans ¹ | 1,401 | 14,203 | | | 17,571 |
| Dairy Products | | | | | |
| Natural Cheese | | | | | |
| American, Total | | 304 | 11,146 | 62,345 | 508,752 |
| Other Natural Cheese | 179 | 206 | 825 | 8,348 | 174,043 |
| Frozen Poultry | | | | | |
| Broilers (Whole) | 1,862 | 10,063 | 230 | 4,751 | 31,433 |
| Hens | 1,960 | 785 | 193 | 615 | 11,067 |
| Other Chicken | 170,988 | 268,325 | 2,752 | 42,526 | 807,857 |
| Total | 174,810 | 279,173 | 3,175 | 47,892 | 850,357 |
| Whole Turkeys | 4,932 | 65,338 | 12,076 | 85,931 | 364,359 |
| Other Turkey | 753 | 35,344 | 8,028 | 19,085 | 213,713 |
| Total | 5,685 | 100,682 | 20,104 | 105,016 | 578,072 |
| Ducks | 135 | 28 | 2 | 211 | 5,238 |
| Total | 180,630 | 379,883 | 23,281 | 153,119 | 1,433,667 |
| Frozen Fruit | | | | | |
| Apples | 117 | 2,426 | 191 | 12,679 | 61,749 |
| Blueberries | 95 | 898 | 352 | 14,723 | 97,790 |
| Cherries, Tart (RSP) | 27 | 1,059 | 3,406 | 10,620 | 156,654 |
| Cherries, Sweet | 17 | 148 | 848 | 3,054 | 16,505 |
| Peaches | 61 | 967 | 192 | 54,725 | 62,288 |
| Raspberries, Red | 189 | 663 | 15 | 66,613 | 70,266 |
| Strawberries, Total | 4,625 | 18,917 | 6,405 | 320,884 | 362,425 |
| Other Frozen Fruit | 381 | 12,642 | 1,092 | 51,112 | 278,449 |

See footnotes at end of table.

--continued

**Stocks in Cold Storage: By Commodity, Region,
and United States, August 31, 1999 (continued)**

| Commodity | New England | Middle Atlantic | East North Central | West North Central | South Atlantic |
|---------------------------------|---------------------|---------------------|--------------------------|--------------------------|---------------------|
| | <i>1,000 Pounds</i> | <i>1,000 Pounds</i> | <i>1,000 Pounds</i> | <i>1,000 Pounds</i> | <i>1,000 Pounds</i> |
| Frozen Juice | | | | | |
| Orange Juice Conc. ² | 13 | | 2,578 | 423 | 1,553,445 |
| Other Juice Concentrate | 932 | 18,197 | 11,275 | 2,158 | 155,262 |
| Frozen Vegetables ³ | | | | | |
| Asparagus | | 197 | 7,567 | 61 | 822 |
| Limas, Fordhook | | 256 | 295 | 58 | 857 |
| Limas, Baby | | 1,319 | 717 | 497 | 8,558 |
| Green Beans, Reg. Cut | | 24,095 | 38,664 | 2,422 | 12,175 |
| Green Beans, Fr. Style | | 7,345 | 3,419 | 294 | 661 |
| Broccoli, Spears | | 4,272 | 195 | 1,987 | 4,448 |
| Broccoli, Chopped & Cut | | 6,053 | 8,507 | 4,341 | 7,499 |
| Brussels Sprouts | | 369 | 195 | 390 | 594 |
| Carrots, Diced | | 2,759 | 4,155 | 921 | 14,722 |
| Carrots, Other | | 4,184 | 6,345 | 1,275 | 8,862 |
| Cauliflower | | 773 | 1,796 | 468 | 1,447 |
| Corn, Cut | | 24,062 | 19,197 | 14,829 | 20,228 |
| Corn, Cob | | 10,045 | 4,592 | 19,742 | 9,610 |
| Mixed Vegetables | | 1,809 | 3,826 | 1,408 | 8,068 |
| Okra | | 1,208 | 220 | 1,413 | 21,490 |
| Onion Rings | | 646 | 8,510 | 882 | 1,846 |
| Onions, Other | | 2,208 | 4,997 | 641 | 4,036 |
| Blackeye Peas | | 479 | 295 | 11 | 4,696 |
| Green Peas | | 43,206 | 32,363 | 19,522 | 13,473 |
| Peas & Carrots Mixed | | 526 | 524 | 44 | 663 |
| Spinach | | 7,710 | 1,679 | 762 | 10,505 |
| Squash, Summer/Zucchini | | 816 | 13,340 | 596 | 18,233 |
| Southern Greens | | 2,342 | 32 | 28 | 8,387 |
| Other Vegetables | | 25,827 | 31,769 | 6,954 | 40,923 |
| Potatoes | | | | | |
| French Fries | 29,034 | 31,609 | 71,060 | 62,984 | 26,259 |
| Other Frozen | 8,635 | 9,710 | 37,841 | 4,996 | 5,534 |
| Meat | | | | | |
| Frozen Beef | | | | | |
| Boneless ⁴ | 4,823 | 30,270 | 29,379 | 57,816 | 19,205 |
| Beef Cuts ⁵ | 1,880 | 1,346 | 4,468 | 8,671 | 753 |
| Frozen Pork | | | | | |
| Ribs ⁶ | 250 | 1,580 | 11,757 | 10,671 | 3,881 |
| Trimmings ⁷ | 144 | 2,495 | 7,986 | 16,480 | 7,128 |
| Other ⁸ | 3,603 | 4,216 | 23,511 | 21,750 | 13,952 |
| Other | | | | | |
| Veal | 250 | 620 | 2,490 | 126 | 41 |
| Lamb & Mutton | 518 | 4,266 | 1,573 | 782 | 1,338 |

See footnotes at end of table.

--continued

**Stocks in Cold Storage: By Commodity, Region,
and United States, August 31, 1999 (continued)**

| Commodity | East South Central | West South Central | Mountain | Pacific | US Total |
|--------------------------------|--------------------------|--------------------------|---------------------|---------------------|---------------------|
| | <i>1,000 Pounds</i> | <i>1,000 Pounds</i> | <i>1,000 Pounds</i> | <i>1,000 Pounds</i> | <i>1,000 Pounds</i> |
| Frozen Juice | | | | | |
| Orange Juice Concentrate | 279 | 3,678 | 2,250 | 52,776 | 1,615,442 |
| Other Juice Concentrate | 2,511 | 18,112 | 486 | 158,327 | 367,260 |
| Frozen Vegetables ³ | | | | | |
| Asparagus | | 566 | 173 | 7,634 | 17,020 |
| Limas, Fordhook | | 93 | | 6,679 | 8,238 |
| Limas, Baby | | 332 | 2,577 | 16,759 | 30,759 |
| Green Beans, Reg. Cut | | 1,080 | 130 | 103,779 | 182,345 |
| Green Beans, Fr. Style | | 186 | 90 | 26,591 | 38,586 |
| Broccoli, Spears | | 22,324 | 2,481 | 15,500 | 51,207 |
| Broccoli, Chopped & Cut | | 51,161 | 1,230 | 63,206 | 141,997 |
| Brussels Sprouts | | 1,100 | 4 | 6,901 | 9,553 |
| Carrots, Diced | | 2,194 | 131 | 18,320 | 43,202 |
| Carrots, Other | | 8,845 | 1,344 | 86,986 | 117,841 |
| Cauliflower | | 6,273 | 15 | 18,777 | 29,549 |
| Corn, Cut | | 1,511 | 3,199 | 147,832 | 230,858 |
| Corn, Cob | | 1,100 | 557 | 110,470 | 156,116 |
| Mixed Vegetables | | 5,669 | 343 | 26,304 | 47,427 |
| Okra | | 37,381 | | 551 | 62,263 |
| Onion Rings | | 658 | 309 | 1,152 | 14,003 |
| Onions, Other | | 1,954 | 2,574 | 14,144 | 30,554 |
| Blackeye Peas | | 879 | | 160 | 6,520 |
| Green Peas | | 3,975 | 21,282 | 252,335 | 386,156 |
| Peas & Carrots Mixed | | 59 | 25 | 7,782 | 9,623 |
| Spinach | | 11,336 | 10,905 | 69,163 | 112,060 |
| Squash, Summer/Zucchini | | 7,486 | 150 | 21,814 | 62,435 |
| Southern Greens | | 8,477 | | 567 | 19,833 |
| Other Vegetables | | 39,357 | 3,818 | 147,350 | 295,998 |
| Potatoes | | | | | |
| French Fries | 1,056 | 14,037 | 257,258 | 436,382 | 929,679 |
| Other Frozen | 567 | 8,527 | 46,008 | 120,922 | 242,740 |
| Meat | | | | | |
| Frozen Beef | | | | | |
| Boneless ⁴ | 2,846 | 49,327 | 6,061 | 44,066 | 243,793 |
| Beef Cuts ⁵ | 296 | 10,012 | 11,099 | 9,901 | 48,426 |
| Frozen Pork | | | | | |
| Ribs ⁶ | 1,467 | 1,142 | 42 | 1,032 | 31,822 |
| Trimmings ⁷ | 313 | 1,474 | 199 | 3,355 | 39,574 |
| Other ⁸ | 7,662 | 13,316 | 289 | 3,878 | 92,177 |
| Other | | | | | |
| Veal | 32 | 105 | | 702 | 4,366 |
| Lamb & Mutton | | 1,016 | 664 | 2,084 | 12,241 |

¹ East North Central combined with South Atlantic. Mountain and West North Central Combined with West South Central.

² Middle Atlantic combined with South Atlantic.

³ New England combined with Middle Atlantic. East South Central combined with South Atlantic.

⁴ Includes all boxed boneless beef, such as ground beef, roasts, steaks, loins, strips, rounds, trimmings, etc. Variety meats (edible offal), such as tongues, livers, hearts, kidneys, and other organs removed from slaughtered beef, are included as miscellaneous freezer stocks.

⁵ Includes all boxed primal beef cuts, bone-in.

⁶ Includes spareribs and backribs.

⁷ Includes 42% regular trimmings, 72% special trimmings, boneless picnic meat, jowls, neckbone trimmings, blade, cheek, head, and shank meat, etc. Packaged bacon, sausage, and processed items, such as hot dogs and luncheon meats, are included in miscellaneous cooler or freezer stocks.

⁸ Includes ears, tails, feet, neckbones and snouts.

**Public General Warehouses: Cold Storage Space Occupied
by Region and United States, August 1999**

| Region | Cooler | | | | Freezer | | | |
|------------------|--------------------|--------------------------|----------------|----------------|--------------------|--------------------------|----------------|----------------|
| | Usable Space | Usable Space Occupied | | | Usable Space | Usable Space Occupied | | |
| | | Aug 31 1999 | Aug 31 1998 | Jul 31 1999 | | Aug 31 1999 | Aug 31 1998 | Jul 31 1999 |
| | <i>1,000 Cu Ft</i> | <i>Percent</i> | <i>Percent</i> | <i>Percent</i> | <i>1,000 Cu Ft</i> | <i>Percent</i> | <i>Percent</i> | <i>Percent</i> |
| New England | 2,436 | 58 | 64 | 65 | 20,251 | 75 | 73 | 72 |
| Middle Atlantic | 35,770 | 73 | 73 | 70 | 119,134 | 81 | 79 | 80 |
| E. North Central | 47,804 | 52 | 52 | 53 | 173,367 | 64 | 52 | 57 |
| W. North Central | 52,046 | 55 | 45 | 48 | 150,718 | 55 | 54 | 53 |
| South Atlantic | 50,466 | 56 | 49 | 48 | 164,175 | 56 | 64 | 63 |
| E. South Central | 8,588 | 49 | 70 | 67 | 61,960 | 60 | 47 | 44 |
| W. South Central | 20,960 | 56 | 46 | 44 | 133,208 | 68 | 72 | 70 |
| Mountain | 5,947 | 89 | 76 | 79 | 46,178 | 68 | 69 | 67 |
| Pacific | 35,447 | 40 | 38 | 41 | 242,234 | 75 | 67 | 70 |
| US | 259,464 | 56 | 52 | 52 | 1,111,225 | 66 | 63 | 64 |

Cold Storage Regions



Survey Procedures: Questionnaires are mailed about the 24th of each month to all operators on the list of approximately 1,400 public and private cold storage warehouses. In addition, apple data are obtained from special surveys and other sources (State Departments of Agriculture, U.S. Apple Association, etc.). All survey data represent stocks as of the end of the month.

Data are collected from warehouses artificially cooled to a temperature of 50 degrees Fahrenheit or lower, and whose food products are normally stored for 30 days or more. All food items in these facilities are reported regardless of the number of days stored at the time of the report. Also included are specialized storage facilities meeting the 30 day requirement, such as fruit houses, dairy manufacturing plants, frozen fruit, fruit juice, and vegetable processors, and poultry and meat packing plants. Excluded are stocks in space maintained by wholesalers, jobbers, distributors, chain stores, locker plants containing individual lockers, meat packer branch houses, and frozen food processors whose entire inventories are turned over more than once a month.

Estimating Procedures: Data for reporting firms are added to estimates for non-reporting firms to obtain regional and National totals. Estimates for non-reporting firms are obtained by multiplying the previous month's figure by a percent change from the previous month. The percent change is calculated for each item from totals of the current and previous month summed from firms that reported both months.

Revision Policy: Data are revised the following month based on late reports or corrected data. Final figures are published in the annual summary in February of the following year.

Reliability: Reports are received from 900 firms each month which represent about 70 percent of the total capacity. Firms that are not on the list or firms who have never reported are not represented in the data. Monthly data can vary due to different firms reporting month to month. Survey data are also subject to non-sampling errors such as omissions and mistakes in reporting and in processing the data. While these errors cannot be measured directly, they are minimized by carefully reviewing all reported data for consistency and reasonableness.

The next "Cold Storage" report will be released at 3 p.m. ET on October 20, 1999.

The United States Department of Agriculture (USDA) prohibits discrimination in all its programs on the basis of race, color, national origin, gender, religion, age, disability, political beliefs, sexual orientation, and marital or family status. (Not all prohibited bases apply to all programs.) Persons with disabilities who require alternative means for communication of program information (braille, large print, audiotape, etc.) should contact the USDA's TARGET Center at 202-720-2600 (voice and TDD).

To file a complaint of discrimination, write USDA, Director, Office of Civil Rights, Room 326-W, Whitten Building, 14th and Independence Avenue, SW, Washington, D.C., 20250-9410, or call 202-720-5964 (voice or TDD). USDA is an equal opportunity provider and employer.

ACCESS TO REPORTS!!

For your convenience, there are several ways to obtain NASS reports, data products, and services:

INTERNET ACCESS

All NASS reports are available free of charge on the worldwide Internet. For access, connect to the Internet and go to the NASS Home Page at: <http://www.usda.gov/nass/>. Select "Today's Reports" or Publications and then Reports by Calendar or Publications and then Search, by Title or Subject.

E-MAIL SUBSCRIPTION

There are two options for subscribing via e-mail. All NASS reports are available by subscription free of charge direct to your e-mail address. 1) Starting with the NASS Home Page at <http://www.usda.gov/nass/>, click on **Publications**, then click on the **Subscribe by E-mail** button which takes you to the page describing e-mail delivery of reports. Finally, click on **Go to the Subscription Page** and follow the instructions. 2) If you do NOT have Internet access, send an e-mail message to: usda-reports@usda.mannlib.cornell.edu. In the body of the message type the word: **list**.

AUTOFAX ACCESS

NASSFax service is available for some reports from your fax machine. Please call 202-720-2000, using the handset attached to your fax. Respond to the voice prompts. Document 0411 is a list of available reports.

PRINTED REPORTS OR DATA PRODUCTS

CALL OUR TOLL-FREE ORDER DESK: 800-999-6779 (U.S. and Canada)
Other areas, please call 703-834-0125 FAX: 703-834-0110
(Visa, MasterCard, check, or money order acceptable for payment.)

ASSISTANCE

For **assistance** with general agricultural statistics or further information about NASS or its products or services, contact the **Agricultural Statistics Hotline** at **800-727-9540**, 7:30 a.m. to 4:00 p.m. ET, or e-mail: nass@nass.usda.gov.

USDA to Hold Public Forum

October 18, 1999

Holiday Inn Mart Plaza

Chicago, Illinois

The National Agricultural Statistics Service will be organizing an open forum for Data Users. The purpose will be to provide updates on pending changes in the USDA statistical and information programs, and to seek comments and input from data users. Other agencies to be represented will include the Agricultural Marketing Service, the Economic Research Service, the Foreign Agricultural Service, and the World Agricultural Outlook Board.

For registration details, see the NASS home page at <http://www.usda.gov/nass/> or contact Fred Vogel (NASS) at (202) 720-3896 or at hq_ed_od@nass.usda.gov