



Cold Storage

Released October 20, 1999, by the National Agricultural Statistics Service (NASS), Agricultural Statistics Board, U.S. Department of Agriculture. For information on "Cold Storage" call Linda Simpson at (202) 720-8784, office hours 7:00 a.m. to 4:30 p.m. ET.

HIGHLIGHTS

Frozen food stocks in refrigerated warehouses on September 30, 1999 were greater than year earlier levels for butter, chicken, pork, and fruit. Total frozen pork stocks, at 433 million pounds, broke the previous record September high of 389 million pounds set in 1998. Likewise, September 1999 stocks of chicken, at 976 million pounds, also broke the previous record September high of 606 million pounds set in 1998. Fruit also set a new September record high. Cooler stocks of peanuts were also higher than a year earlier.

Total red meat supplies in freezers were down 11 percent from August 1999, but were 1 percent above September 1998. Frozen pork stocks were 1 percent below last month, but were up 11 percent from last year. Stocks of pork bellies decreased 46 percent from last month, but were double the September 1998 stocks. Revised August 1999 red meat supplies were influenced by products awaiting export.

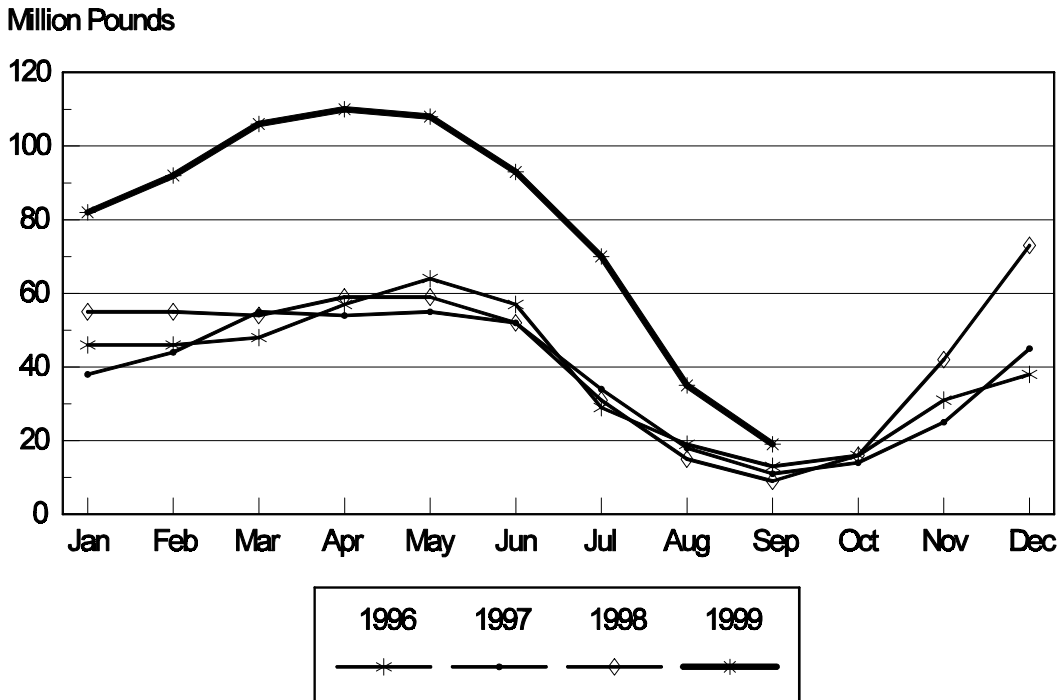
Total frozen poultry supplies were up 11 percent from last month and were 21 percent above last year's level. Total stocks of chicken were up 15 percent from last month and were 61 percent above September 1998. Total pounds of turkey in freezers increased 4 percent from last month, but were 14 percent below last year.

Public cooler occupancy was at 48 percent of capacity, up 6 points from last year. Public freezer occupancy at 66 percent was 2 percentage points below last year.

Table of Contents

	Page
Stocks in Cold Storage: By Commodity, United States, September 1999	3
Stocks in Cold Storage: By Commodity, Region, and United States, August 31, 1999	6
Stocks in Cold Storage: By Commodity, Region, and United States, September 30, 1999	10
Public General Warehouses: Cold Storage Space Occupied by Region and United States, September 1999	14
Survey and Estimating Procedures, Revision Policy and Reliability	15

Frozen Pork Bellies Cold Storage Stocks, 1996 -1999



**Stocks in Cold Storage: By Commodity,
United States, September 1999**

Commodity	Stocks in All Warehouses			Percent of		Public Warehouse Stocks
	Sep 30, 1998	Aug 31, 1999	Sep 30, 1999	Sep 1998	Aug 1999	Sep 30, 1999
	<i>1,000 Pounds</i>	<i>1,000 Pounds</i>	<i>1,000 Pounds</i>	<i>Percent</i>	<i>Percent</i>	<i>1,000 Lbs</i>
Fresh Fruit						
Apples						
Regular Storage	1,303,528	15,056	940,713	72		
Controlled Atmosphere	2,153,015	87,467	1,888,114	88		
Total	3,456,543	102,523	2,828,827	82		2,390
Pears						
Bartlett	142,611	123,756	191,042	134	154	
Other Varieties	390,947	6,417	360,591	92		
Total	533,558	130,173	551,633	103	424	26,009
Nuts						
Shelled						
Peanuts	178,906	519,315	415,443	232	80	
Pecans	40,548	29,202	19,871	49	68	
Other Shelled	94,254	76,644	92,087	98	120	
Total	313,708	625,161	527,401	168	84	333,952
In-Shell						
Peanuts	11,433	23,528	15,637	137	66	
Pecans	51,046	13,602	3,933	8	29	
Other In-Shell	2,509	1,888	5,938	237	315	
Total	64,988	39,018	25,508	39	65	16,737
Dairy Products						
Butter, Total	34,077	95,164	74,055	217	78	64,267
(Government Owned)	169	258	214	127	83	
Natural Cheese						
American, Total	417,489	510,849	471,447	113	92	
(Government Owned)	172	50	9	5	18	
Swiss	12,741	10,027	10,412	82	104	
Other Natural Cheese	122,765	176,695	156,473	127	89	
Total	552,995	697,571	638,332	115	92	381,241
Eggs, Frozen						
Whites	753	665	557	74	84	
Yolks	896	677	705	79	104	
Whole & Mixed	5,618	6,255	6,182	110	99	
Unclassified	928	1,213	976	105	80	
Total	8,195	8,810	8,420	103	96	8,023
Frozen Poultry						
Chicken						
Broilers (Whole)	13,844	31,343	31,117	225	99	
Hens	7,722	11,040	9,878	128	89	
Other Chicken	584,132	803,954	935,341	160	116	
Total	605,698	846,337	976,336	161	115	
Turkey						
Whole Turkeys	463,797	369,435	397,216	86	108	
Other Turkey	235,688	210,871	203,592	86	97	
Total	699,485	580,306	600,808	86	104	
Ducks	4,619	5,322	5,993	130	113	
Total	1,309,802	1,431,965	1,583,137	121	111	1,480,253

**Stocks in Cold Storage: By Commodity,
United States, September 1999 (Continued)**

Commodity	Stocks in All Warehouses			Percent of		Public Warehouse Stocks
	Sep 30, 1998	Aug 31, 1999	Sep 30, 1999	Sep 1998	Aug 1999	Sep 30, 1999
	<i>1,000 Pounds</i>	<i>1,000 Pounds</i>	<i>1,000 Pounds</i>	<i>Percent</i>	<i>Percent</i>	<i>1,000 Lbs</i>
Frozen Fruit						
Apples	44,762	61,738	57,467	128	93	
Apricots	17,302	14,270	12,119	70	85	
Blackberries, Total	30,371	29,748	30,583	101	103	
IQF	15,626	18,798	20,403	131	109	
Pails and Tubs	3,973	2,366	2,237	56	95	
Barrels, 400 lbs net	9,035	7,489	6,469	72	86	
Concentrate	1,737	1,095	1,474	85	135	
Blueberries	94,197	103,184	93,168	99	90	
Boysenberries	6,065	7,927	6,356	105	80	
Cherries, Tart (RSP)	157,631	156,754	143,747	91	92	
Cherries, Tart (Juice)	5,697	4,846	4,158	73	86	
Cherries, Sweet	16,440	16,439	15,632	95	95	
Grapes	3,988	1,753	4,565	114	260	
Peaches	86,504	62,181	81,973	95	132	
Raspberries, Black	1,190	2,059	1,908	160	93	
Raspberries, Red, Total	52,574	81,479	73,560	140	90	
IQF	12,459	19,889	17,264	139	87	
Pails and Tubs	12,745	18,624	18,082	142	97	
Barrels, 400 lbs net	24,512	41,458	36,567	149	88	
Concentrate	2,858	1,508	1,647	58	109	
Strawberries, Total	298,580	361,778	332,553	111	92	
Other Frozen Fruit	235,151	278,511	295,503	126	106	
Total	1,050,452	1,182,667	1,153,292	110	98	794,653
Frozen Juice						
Orange Juice Conc. ¹	1,803,852	1,618,472	1,468,176	81	91	
(Gallon Equivalent)	182,281	163,548	148,361			
Other Juice Concentrate	432,808	362,082	356,144	82	98	
Total	2,236,660	1,980,554	1,824,320	82	92	219,616
Frozen Vegetables						
Asparagus	8,630	17,005	15,631	181	92	
Limas, Fordhook	19,359	8,530	14,847	77	174	
Limas, Baby	57,091	31,197	52,765	92	169	
Green Beans, Reg. Cut	234,523	184,762	215,948	92	117	
Green Beans, Fr. Style	51,520	38,607	39,853	77	103	
Broccoli, Spears	19,444	50,908	46,576	240	91	
Broccoli, Chopped & Cut	84,463	142,707	134,482	159	94	
Brussels Sprouts	3,702	10,232	9,097	246	89	
Carrots, Diced	27,559	37,518	37,182	135	99	
Carrots, Other	127,683	118,538	147,014	115	124	
Cauliflower	31,203	30,608	33,932	109	111	
Corn, Cut	484,877	239,631	391,301	81	163	
Corn, Cob	332,208	154,364	254,257	77	165	
Mixed Vegetables	47,287	47,910	47,929	101	100	
Okra	67,623	62,888	61,714	91	98	
Onion Rings	15,972	14,003	14,205	89	101	
Onions, Other	24,553	31,675	32,081	131	101	
Blackeye Peas	9,629	6,527	7,675	80	118	
Green Peas	387,101	394,806	387,911	100	98	
Peas & Carrots Mixed	7,775	9,702	9,606	124	99	
Spinach	63,463	113,007	99,981	158	88	
Squash, Summer/Zucchini	72,794	63,528	64,586	89	102	
Southern Greens	17,932	19,936	16,853	94	85	
Other Vegetables	297,576	304,189	309,601	104	102	
Total	2,493,967	2,132,778	2,445,027	98	115	1,624,876

See footnotes at end of table.

--continued

**Stocks in Cold Storage: By Commodity,
United States, September 1999 (Continued)**

Commodity	Stocks in All Warehouses			Percent of		Public Warehouse Stocks
	Sep 30, 1998	Aug 31, 1999	Sep 30, 1999	Sep 1998	Aug 1999	Sep 30, 1999
	<i>1,000 Pounds</i>	<i>1,000 Pounds</i>	<i>1,000 Pounds</i>	<i>Percent</i>	<i>Percent</i>	<i>1,000 Lbs</i>
Potatoes						
French Fries	1,010,381	928,193	1,003,264	99	108	
Other Frozen	256,463	241,619	231,086	90	96	
Total	1,266,844	1,169,812	1,234,350	97	106	873,374
Meat						
Frozen Beef						
Boneless ²	286,074	334,742	254,348	89	76	
Beef Cuts ³	36,989	43,124	37,598	102	87	
Total	323,063	377,866	291,946	90	77	288,277
(Government Owned)	2,262	3,894	4,202	186	108	
Frozen Pork						
Picnics, Bone-in	16,891	7,486	7,977	47	107	
Hams, Total	104,530	137,911	135,298	129	98	125,829
Bone-in	68,350	85,644	83,051	122	97	77,687
Boneless ⁴	36,180	52,267	52,247	144	100	48,142
Bellies	9,452	34,814	18,873	200	54	
Loins, Total	15,634	17,485	16,112	103	92	13,162
Bone-in	7,629	8,655	8,205	108	95	
Boneless ⁵	8,005	8,830	7,907	99	90	
Ribs ⁶	38,855	31,825	37,006	95	116	
Butts	8,001	5,612	6,869	86	122	
Trimmings ⁷	55,583	39,445	42,004	76	106	
Other ⁸	80,843	92,300	88,610	110	96	
Variety Meats ⁹	43,034	59,942	66,389	154	111	
Unclassified ¹⁰	16,028	11,257	14,347	90	127	
Total	388,851	438,077	433,485	111	99	374,696
(Government Owned)	1,676	6,538	6,690	399	102	
Other						
Veal	5,135	4,366	4,179	81	96	
Lamb & Mutton	12,253	12,240	9,714	79	79	
Total	17,388	16,606	13,893	80	84	13,668
Canned						
Canned Hams	8,753	7,019	7,121	81	101	
Other Canned Meat	706	752	712	101	95	
Total	9,459	7,771	7,833	83	101	3,938
Total	738,761	840,320	747,157	101	89	680,579
Miscellaneous						
Cooler	850,549	723,870	1,285,558	151	178	667,649
Freezer	1,987,765	2,080,282	1,937,802	97	93	1,873,420
Total	2,838,314	2,804,152	3,223,360	114	115	2,541,069
Commodities						
Stored in Coolers	5,781,800	2,326,087	5,865,092	101	252	1,431,916
Stored in Freezers	11,117,064	10,914,581	10,999,727	99	101	7,615,123
Total	16,898,864	13,240,668	16,864,819	100	127	9,047,039

¹ Adjusted to 42.0 degrees Brix equivalent (9.896 pounds per gallon).

² Includes all boxed boneless beef, such as ground beef, roasts, steaks, loins, strips, rounds, trimmings, etc. Variety meats (edible offal), such as tongues, livers, hearts, kidneys, and other organs removed from slaughtered beef, are included as miscellaneous freezer stocks.

³ Includes all boxed primal beef cuts, bone-in.

⁴ Includes full ham, bone removed and individual muscles separated.

⁵ Includes pork tenderloins.

⁶ Includes spareribs and backribs.

⁷ Includes 42% regular trimmings, 72% special trimmings, boneless picnic meat, jowls, neckbone trimmings, blade, cheek, head, and shank meat, etc. Packaged bacon, sausage, and processed items, such as hot dogs and luncheon meats, are included in miscellaneous cooler or freezer stocks.

⁸ Includes ears, tails, feet, neckbones and snouts.

⁹ Includes tongues, kidneys, livers, stomachs, hearts, chitterlings, salivary glands, and other organs removed from slaughtered hogs.

¹⁰ Includes pork unable to be classified elsewhere in this report.

**Stocks in Cold Storage: By Commodity, Region,
and United States, August 31, 1999**

Commodity	New England	Middle Atlantic	East North Central	West North Central	South Atlantic
	<i>1,000 Pounds</i>	<i>1,000 Pounds</i>	<i>1,000 Pounds</i>	<i>1,000 Pounds</i>	<i>1,000 Pounds</i>
Nuts					
Shelled					
Peanuts		5	134	29	338,755
Pecans ¹		81			9,086
In-Shell					
Pecans ¹		10			1,957
Dairy Products					
Natural Cheese					
American, Total	28,314	45,505	247,068	113,822	398
Other Natural Cheese	661	13,285	91,452	60,341	1,374
Frozen Poultry					
Broilers (Whole)	80	348	260	1,419	12,666
Hens	2	121	1,965	2,212	3,187
Other Chicken	1,812	6,552	13,504	30,648	267,258
Total	1,894	7,021	15,729	34,279	283,111
Whole Turkeys	12,216	42,771	38,641	42,615	60,883
Other Turkey	317	11,671	19,622	64,417	55,593
Total	12,533	54,442	58,263	107,032	116,476
Ducks	63	137	4,483	166	97
Total	14,490	61,600	78,475	141,477	399,684
Frozen Fruit					
Apples	31	20,722	25,255	98	223
Blueberries	18,610	11,161	49,480	313	3,750
Cherries, Tart (RSP)	45	9,424	131,875	46	172
Cherries, Sweet		739	11,502	71	60
Peaches	32	2,479	3,360	47	396
Raspberries, Red	379	1,409	922	154	71
Strawberries, Total	76	3,180	5,503	1,390	1,444
Other Frozen Fruit	69,016	18,157	124,309	618	1,121

See footnotes at end of table.

--continued

**Stocks in Cold Storage: By Commodity, Region,
and United States, August 31, 1999 (continued)**

Commodity	East South Central	West South Central	Mountain	Pacific	US Total
	<i>1,000 Pounds</i>	<i>1,000 Pounds</i>	<i>1,000 Pounds</i>	<i>1,000 Pounds</i>	<i>1,000 Pounds</i>
Nuts					
Shelled					
Peanuts	48,709	130,881	144	658	519,315
Pecans ¹	507	19,410		118	29,202
In-Shell					
Pecans ¹	1,401	10,234			13,602
Dairy Products					
Natural Cheese					
American, Total		304	11,064	64,374	510,849
Other Natural Cheese	179	206	842	8,355	176,695
Frozen Poultry					
Broilers (Whole)	1,862	9,663	294	4,751	31,343
Hens	1,960	785	193	615	11,040
Other Chicken	170,988	267,833	2,831	42,528	803,954
Total	174,810	278,281	3,318	47,894	846,337
Whole Turkeys	4,932	65,338	16,108	85,931	369,435
Other Turkey	753	35,344	4,077	19,077	210,871
Total	5,685	100,682	20,185	105,008	580,306
Ducks	135	28	2	211	5,322
Total	180,630	378,991	23,505	153,113	1,431,965
Frozen Fruit					
Apples	117	2,426	187	12,679	61,738
Blueberries	95	898	368	18,509	103,184
Cherries, Tart (RSP)	27	1,059	3,486	10,620	156,754
Cherries, Sweet	17	148	848	3,054	16,439
Peaches	61	967	114	54,725	62,181
Raspberries, Red	189	663	16	77,676	81,479
Strawberries, Total	4,625	18,917	6,426	320,217	361,778
Other Frozen Fruit	381	12,642	1,092	51,175	278,511

See footnotes at end of table.

--continued

**Stocks in Cold Storage: By Commodity, Region,
and United States, August 31, 1999 (continued)**

Commodity	New England	Middle Atlantic	East North Central	West North Central	South Atlantic
	<i>1,000 Pounds</i>	<i>1,000 Pounds</i>	<i>1,000 Pounds</i>	<i>1,000 Pounds</i>	<i>1,000 Pounds</i>
Frozen Juice					
Orange Juice Conc. ²	13		2,651	423	1,555,860
Other Juice Concentrate	932	18,165	11,292	2,165	150,183
Frozen Vegetables ³					
Asparagus		199	7,567	61	822
Limas, Fordhook		548	295	58	857
Limas, Baby		1,808	708	495	8,522
Green Beans, Reg. Cut		27,164	38,664	2,393	12,157
Green Beans, Fr. Style		8,072	3,419	295	658
Broccoli, Spears		4,721	195	1,981	4,449
Broccoli, Chopped & Cut		6,438	8,522	4,324	7,490
Brussels Sprouts		1,043	195	390	599
Carrots, Diced		3,334	4,077	919	8,542
Carrots, Other		5,764	6,291	1,247	8,863
Cauliflower		1,829	1,796	469	1,443
Corn, Cut		29,841	19,063	14,762	20,552
Corn, Cob		10,309	4,592	19,704	9,121
Mixed Vegetables		2,189	3,826	1,382	8,011
Okra		1,823	220	1,413	21,500
Onion Rings		646	8,510	882	1,846
Onions, Other		3,340	4,997	639	4,019
Blackeye Peas		478	295	11	4,704
Green Peas		51,359	32,342	19,502	13,458
Peas & Carrots Mixed		611	524	39	663
Spinach		8,590	1,679	757	10,506
Squash, Summer/Zucchini		2,274	13,327	590	18,184
Southern Greens		2,343	32	28	8,489
Other Vegetables		31,461	32,955	6,896	41,231
Potatoes					
French Fries	27,955	31,607	72,530	60,863	26,259
Other Frozen	7,950	9,845	37,561	4,998	5,524
Meat					
Frozen Beef					
Boneless	4,823	30,270	28,857	57,155	19,125
Beef Cuts	1,880	1,346	4,470	8,623	754
Frozen Pork					
Ribs	250	1,580	11,757	10,673	3,881
Trimming	144	2,495	7,986	16,480	7,000
Other	3,603	4,216	23,562	21,750	14,021
Other					
Veal	250	620	2,490	126	41
Lamb & Mutton	518	4,266	1,573	782	1,338

See footnotes at end of table.

--continued

**Stocks in Cold Storage: By Commodity, Region,
and United States, August 31, 1999 (continued)**

Commodity	East South Central	West South Central	Mountain	Pacific	US Total
	<i>1,000 Pounds</i>	<i>1,000 Pounds</i>	<i>1,000 Pounds</i>	<i>1,000 Pounds</i>	<i>1,000 Pounds</i>
Frozen Juice					
Orange Juice Concentrate	279	3,678	2,792	52,776	1,618,472
Other Juice Concentrate	2,511	18,112	395	158,327	362,082
Frozen Vegetables ³					
Asparagus		566	173	7,617	17,005
Limas, Fordhook		93		6,679	8,530
Limas, Baby		332	2,577	16,755	31,197
Green Beans, Reg. Cut		1,080	127	103,177	184,762
Green Beans, Fr. Style		186	90	25,887	38,607
Broccoli, Spears		21,344	2,717	15,501	50,908
Broccoli, Chopped & Cut		51,540	1,230	63,163	142,707
Brussels Sprouts		1,100	4	6,901	10,232
Carrots, Diced		2,194	131	18,321	37,518
Carrots, Other		8,845	655	86,873	118,538
Cauliflower		6,273	15	18,783	30,608
Corn, Cut		1,511	5,685	148,217	239,631
Corn, Cob		1,100	554	108,984	154,364
Mixed Vegetables		5,669	361	26,472	47,910
Okra		37,381		551	62,888
Onion Rings		658	309	1,152	14,003
Onions, Other		1,954	2,574	14,152	31,675
Blackeye Peas		879		160	6,527
Green Peas		3,975	21,819	252,351	394,806
Peas & Carrots Mixed		59	24	7,782	9,702
Spinach		11,336	10,976	69,163	113,007
Squash, Summer/Zucchini		7,486	150	21,517	63,528
Southern Greens		8,477		567	19,936
Other Vegetables		39,357	4,817	147,472	304,189
Potatoes					
French Fries	1,056	14,037	256,745	437,141	928,193
Other Frozen	567	8,527	46,054	120,593	241,619
Meat					
Frozen Beef					
Boneless ⁴	2,846	141,610	5,990	44,066	334,742
Beef Cuts ⁵	296	10,012	5,842	9,901	43,124
Frozen Pork					
Ribs ⁶	1,467	1,142	43	1,032	31,825
Trimming ⁷	313	1,474	201	3,352	39,445
Other ⁸	7,662	13,316	292	3,878	92,300
Other					
Veal	32	105		702	4,366
Lamb & Mutton		1,016	663	2,084	12,240

¹ East North Central combined with South Atlantic. Mountain and West North Central combined with West South Central.

² Middle Atlantic combined with South Atlantic.

³ New England combined with Middle Atlantic. East South Central combined with South Atlantic.

⁴ Includes all boxed boneless beef, such as ground beef, roasts, steaks, loins, strips, rounds, trimmings, etc. Variety meats (edible offal), such as tongues, livers, hearts, kidneys, and other organs removed from slaughtered beef, are included as miscellaneous freezer stocks.

⁵ Includes all boxed primal beef cuts, bone-in.

⁶ Includes spareribs and backribs.

⁷ Includes 42% regular trimmings, 72% special trimmings, boneless picnic meat, jowls, neckbone trimmings, blade, cheek, head, and shank meat, etc. Packaged bacon, sausage, and processed items, such as hot dogs and luncheon meats, are included in miscellaneous cooler or freezer stocks.

⁸ Includes ears, tails, feet, neckbones and snouts.

**Stocks in Cold Storage: By Commodity, Region,
and United States, September 30, 1999**

Commodity	New England	Middle Atlantic	East North Central	West North Central	South Atlantic
	<i>1,000 Pounds</i>	<i>1,000 Pounds</i>	<i>1,000 Pounds</i>	<i>1,000 Pounds</i>	<i>1,000 Pounds</i>
Nuts					
Shelled					
Peanuts		73	110	24	270,218
Pecans ¹		109			5,206
In-Shell					
Pecans ¹					322
Dairy Products					
Natural Cheese					
American, Total	25,765	41,684	231,627	102,246	631
Other Natural Cheese	559	11,705	80,367	53,435	1,280
Frozen Poultry					
Broilers (Whole)	80	1,264	1,615	1,787	12,251
Hens	2	133	1,701	1,793	3,191
Other Chicken	1,841	5,705	14,975	30,426	298,439
Total	1,923	7,102	18,291	34,006	313,881
Whole Turkeys	13,140	46,005	40,725	43,988	64,081
Other Turkey	308	11,844	19,177	60,439	54,630
Total	13,448	57,849	59,902	104,427	118,711
Ducks	48	201	4,719	177	87
Total	15,419	65,152	82,912	138,610	432,679
Frozen Fruit					
Apples	19	18,436	23,989	102	174
Blueberries	16,332	10,722	43,569	283	3,308
Cherries, Tart (RSP)	39	8,586	121,171	43	29
Cherries, Sweet		617	11,213	65	52
Peaches	41	2,523	4,180	53	460
Raspberries, Red	355	1,484	814	137	89
Strawberries, Total	130	3,261	5,069	1,266	1,622
Other Frozen Fruit	74,022	19,867	139,673	641	1,254

See footnotes at end of table.

--continued

**Stocks in Cold Storage: By Commodity, Region,
and United States, September 30, 1999 (continued)**

Commodity	East South Central	West South Central	Mountain	Pacific	US Total
	<i>1,000 Pounds</i>	<i>1,000 Pounds</i>	<i>1,000 Pounds</i>	<i>1,000 Pounds</i>	<i>1,000 Pounds</i>
Nuts					
Shelled					
Peanuts	39,092	105,228	172	526	415,443
Pecans ¹	119	14,329		108	19,871
In-Shell					
Pecans ¹	1,005	2,606			3,933
Dairy Products					
Natural Cheese					
American, Total		259	10,043	59,192	471,447
Other Natural Cheese	150	205	468	8,304	156,473
Frozen Poultry					
Broilers (Whole)	2,211	8,814	324	2,771	31,117
Hens	1,939	623	175	321	9,878
Other Chicken	184,255	275,221	3,415	121,064	935,341
Total	188,405	284,658	3,914	124,156	976,336
Whole Turkeys	4,576	70,888	18,368	95,445	397,216
Other Turkey	3,422	32,291	4,356	17,125	203,592
Total	7,998	103,179	22,724	112,570	600,808
Ducks	74	185	35	467	5,993
Total	196,477	388,022	26,673	237,193	1,583,137
Frozen Fruit					
Apples	97	3,042	142	11,466	57,467
Blueberries	109	735	381	17,729	93,168
Cherries, Tart (RSP)	44	950	3,174	9,711	143,747
Cherries, Sweet	4	133	762	2,786	15,632
Peaches	91	1,400	106	73,119	81,973
Raspberries, Red	87	720	12	69,862	73,560
Strawberries, Total	4,148	17,671	5,738	293,648	332,553
Other Frozen Fruit	336	11,900	1,026	46,784	295,503

See footnotes at end of table.

--continued

**Stocks in Cold Storage: By Commodity, Region,
and United States, September 30, 1999 (continued)**

Commodity	New England	Middle Atlantic	East North Central	West North Central	South Atlantic
	<i>1,000 Pounds</i>	<i>1,000 Pounds</i>	<i>1,000 Pounds</i>	<i>1,000 Pounds</i>	<i>1,000 Pounds</i>
Frozen Juice					
Orange Juice Conc. ²	16		2,306	500	1,412,660
Other Juice Concentrate	832	18,548	10,421	2,086	147,355
Frozen Vegetables ³					
Asparagus		167	6,987	56	709
Limas, Fordhook		530	382	245	1,297
Limas, Baby		2,237	2,035	444	15,171
Green Beans, Reg. Cut		38,176	51,125	2,549	15,598
Green Beans, Fr. Style		9,247	3,594	272	1,028
Broccoli, Spears		5,285	183	1,755	4,026
Broccoli, Chopped & Cut		4,681	8,935	3,964	7,272
Brussels Sprouts		905	204	360	454
Carrots, Diced		3,025	4,824	883	7,715
Carrots, Other		7,015	8,252	1,476	9,093
Cauliflower		1,987	2,316	518	1,319
Corn, Cut		43,729	29,530	22,422	23,815
Corn, Cob		18,162	5,382	31,382	9,779
Mixed Vegetables		2,159	5,034	1,220	7,100
Okra		1,815	214	1,427	19,915
Onion Rings		755	8,889	1,172	1,335
Onions, Other		3,355	5,941	582	3,810
Blackeye Peas		360	352	7	5,961
Green Peas		48,679	29,784	19,589	13,655
Peas & Carrots Mixed		556	497	53	599
Spinach		7,644	1,537	733	9,275
Squash, Summer/Zucchini		3,622	14,077	730	18,504
Southern Greens		1,980	27	19	6,402
Other Vegetables		32,153	36,462	10,881	38,358
Potatoes					
French Fries	26,819	32,438	64,276	68,968	37,542
Other Frozen	6,666	9,467	34,714	6,931	5,407
Meat					
Frozen Beef					
Boneless ⁴	5,030	25,538	29,999	60,305	17,449
Beef Cuts ⁵	1,588	1,333	4,223	8,524	922
Frozen Pork					
Ribs ⁶	262	923	13,446	14,853	3,745
Trimming ⁷	146	2,048	7,594	19,835	6,199
Other ⁸	3,770	2,664	21,324	25,421	10,475
Other					
Veal	250	479	2,396	248	41
Lamb & Mutton	407	3,195	1,310	825	1,095

See footnotes at end of table.

--continued

**Stocks in Cold Storage: By Commodity, Region,
and United States, September 30, 1999 (continued)**

Commodity	East South Central	West South Central	Mountain	Pacific	US Total
	<i>1,000 Pounds</i>	<i>1,000 Pounds</i>	<i>1,000 Pounds</i>	<i>1,000 Pounds</i>	<i>1,000 Pounds</i>
Frozen Juice					
Orange Juice Concentrate	409	2,995	2,622	46,668	1,468,176
Other Juice Concentrate	2,493	13,806	509	160,094	356,144
Frozen Vegetables ³					
Asparagus		291	145	7,276	15,631
Limas, Fordhook		85	196	12,112	14,847
Limas, Baby		348	5,452	27,078	52,765
Green Beans, Reg. Cut		1,125	146	107,229	215,948
Green Beans, Fr. Style		231	107	25,374	39,853
Broccoli, Spears		20,116	1,973	13,238	46,576
Broccoli, Chopped & Cut		45,552	2,667	61,411	134,482
Brussels Sprouts		833	4	6,337	9,097
Carrots, Diced		2,007	152	18,576	37,182
Carrots, Other		8,224	371	112,583	147,014
Cauliflower		5,117	39	22,636	33,932
Corn, Cut		2,176	8,072	261,557	391,301
Corn, Cob		1,195	103	188,254	254,257
Mixed Vegetables		5,549	165	26,702	47,929
Okra		37,784		559	61,714
Onion Rings		677	721	656	14,205
Onions, Other		1,345	2,668	14,380	32,081
Blackeye Peas		847		148	7,675
Green Peas		3,929	21,388	250,887	387,911
Peas & Carrots Mixed		58	25	7,818	9,606
Spinach		9,162	10,062	61,568	99,981
Squash, Summer/Zucchini		6,947	161	20,545	64,586
Southern Greens		7,902		523	16,853
Other Vegetables		38,644	4,645	148,458	309,601
Potatoes					
French Fries	1,182	18,591	279,352	474,096	1,003,264
Other Frozen	730	8,353	50,862	107,956	231,086
Meat					
Frozen Beef					
Boneless ⁴	2,304	60,635	7,569	45,519	254,348
Beef Cuts ⁵	230	5,973	5,160	9,645	37,598
Frozen Pork					
Ribs ⁶	1,381	1,269	37	1,090	37,006
Trimming ⁷	304	2,739	102	3,037	42,004
Other ⁸	7,955	12,963	302	3,736	88,610
Other					
Veal	32	107		626	4,179
Lamb & Mutton	1	740	572	1,569	9,714

¹ East North Central combined with South Atlantic. Mountain and West North Central Combined with West South Central.

² Middle Atlantic combined with South Atlantic.

³ New England combined with Middle Atlantic. East South Central combined with South Atlantic.

⁴ Includes all boxed boneless beef, such as ground beef, roasts, steaks, loins, strips, rounds, trimmings, etc. Variety meats (edible offal), such as tongues, livers, hearts, kidneys, and other organs removed from slaughtered beef, are included as miscellaneous freezer stocks.

⁵ Includes all boxed primal beef cuts, bone-in.

⁶ Includes spareribs and backribs.

⁷ Includes 42% regular trimmings, 72% special trimmings, boneless picnic meat, jowls, neckbone trimmings, blade, cheek, head, and shank meat, etc. Packaged bacon, sausage, and processed items, such as hot dogs and luncheon meats, are included in miscellaneous cooler or freezer stocks.

⁸ Includes ears, tails, feet, neckbones and snouts.

**Public General Warehouses: Cold Storage Space Occupied
by Region and United States, September 1999**

Region	Cooler				Freezer			
	Usable Space	Usable Space Occupied			Usable Space	Usable Space Occupied		
		Sep 30 1999	Sep 30 1998	Aug 31 1999		Sep 30 1999	Sep 30 1998	Aug 31 1999
	<i>1,000 Cu Ft</i>	<i>Percent</i>	<i>Percent</i>	<i>Percent</i>	<i>1,000 Cu Ft</i>	<i>Percent</i>	<i>Percent</i>	<i>Percent</i>
New England	2,436	57	66	61	20,251	73	72	70
Middle Atlantic	35,178	78	67	64	119,134	83	83	80
E. North Central	48,952	54	51	50	173,222	68	57	64
W. North Central	52,046	51	43	41	150,718	58	50	50
South Atlantic	50,435	52	45	44	164,173	56	65	63
E. South Central	8,588	46	68	68	61,960	59	45	44
W. South Central	20,960	52	46	45	133,208	67	68	67
Mountain	5,947	82	82	76	46,177	63	69	73
Pacific	34,913	34	29	36	241,234	78	74	79
US	259,455	54	49	48	1,110,077	68	65	66

Cold Storage Regions



Survey Procedures: Questionnaires are mailed about the 24th of each month to all operators on the list of approximately 1,400 public and private cold storage warehouses. In addition, apple data are obtained from special surveys and other sources (State Departments of Agriculture, U.S. Apple Association, etc.). All survey data represent stocks as of the end of the month.

Data are collected from warehouses artificially cooled to a temperature of 50 degrees Fahrenheit or lower, and whose food products are normally stored for 30 days or more. All food items in these facilities are reported regardless of the number of days stored at the time of the report. Also included are specialized storage facilities meeting the 30 day requirement, such as fruit houses, dairy manufacturing plants, frozen fruit, fruit juice, and vegetable processors, and poultry and meat packing plants. Excluded are stocks in space maintained by wholesalers, jobbers, distributors, chain stores, locker plants containing individual lockers, meat packer branch houses, and frozen food processors whose entire inventories are turned over more than once a month.

Estimating Procedures: Data for reporting firms are added to estimates for non-reporting firms to obtain regional and National totals. Estimates for non-reporting firms are obtained by multiplying the previous month's figure by a percent change from the previous month. The percent change is calculated for each item from totals of the current and previous month summed from firms that reported both months.

Revision Policy: Data are revised the following month based on late reports or corrected data. Final figures are published in the annual summary in February of the following year.

Reliability: Reports are received from 900 firms each month which represent about 70 percent of the total capacity. Firms that are not on the list or firms who have never reported are not represented in the data. Monthly data can vary due to different firms reporting month to month. Survey data are also subject to non-sampling errors such as omissions and mistakes in reporting and in processing the data. While these errors cannot be measured directly, they are minimized by carefully reviewing all reported data for consistency and reasonableness.

The next "Cold Storage" report will be released at 3 p.m. ET on November 19, 1999.

The United States Department of Agriculture (USDA) prohibits discrimination in all its programs on the basis of race, color, national origin, gender, religion, age, disability, political beliefs, sexual orientation, and marital or family status. (Not all prohibited bases apply to all programs.) Persons with disabilities who require alternative means for communication of program information (braille, large print, audiotape, etc.) should contact the USDA's TARGET Center at 202-720-2600 (voice and TDD).

To file a complaint of discrimination, write USDA, Director, Office of Civil Rights, Room 326-W, Whitten Building, 14th and Independence Avenue, SW, Washington, D.C., 20250-9410, or call 202-720-5964 (voice or TDD). USDA is an equal opportunity provider and employer.

ACCESS TO REPORTS!!

For your convenience, there are several ways to obtain NASS reports, data products, and services:

INTERNET ACCESS

All NASS reports are available free of charge on the worldwide Internet. For access, connect to the Internet and go to the NASS Home Page at: <http://www.usda.gov/nass/>. Select "Today's Reports" or Publications and then Reports by Calendar or Publications and then Search, by Title or Subject.

E-MAIL SUBSCRIPTION

There are two options for subscribing via e-mail. All NASS reports are available by subscription free of charge direct to your e-mail address. 1) Starting with the NASS Home Page at <http://www.usda.gov/nass/>, click on **Publications**, then click on the **Subscribe by E-mail** button which takes you to the page describing e-mail delivery of reports. Finally, click on **Go to the Subscription Page** and follow the instructions. 2) If you do NOT have Internet access, send an e-mail message to: usda-reports@usda.mannlib.cornell.edu. In the body of the message type the word: **list**.

AUTOFAX ACCESS

NASSFax service is available for some reports from your fax machine. Please call 202-720-2000, using the handset attached to your fax. Respond to the voice prompts. Document 0411 is a list of available reports.

PRINTED REPORTS OR DATA PRODUCTS

CALL OUR TOLL-FREE ORDER DESK: 800-999-6779 (U.S. and Canada)
Other areas, please call 703-834-0125 FAX: 703-834-0110
(Visa, MasterCard, check, or money order acceptable for payment.)

ASSISTANCE

For **assistance** with general agricultural statistics or further information about NASS or its products or services, contact the **Agricultural Statistics Hotline** at **800-727-9540**, 7:30 a.m. to 4:00 p.m. ET, or e-mail: nass@nass.usda.gov.