



Cold Storage

Released November 19, 1999, by the National Agricultural Statistics Service (NASS), Agricultural Statistics Board, U.S. Department of Agriculture. For information on "Cold Storage" call Linda Simpson at (202) 720-8784, office hours 7:00 a.m. to 4:30 p.m. ET.

HIGHLIGHTS

Frozen food stocks in refrigerated warehouses on October 31, 1999 were greater than year earlier levels for butter, chicken, pork, and fruit. Total frozen pork stocks, at 425 million pounds, broke the previous record October high of 412 million pounds set in 1998. Likewise, October 1999 stocks of chicken, at 829 million pounds, also broke the previous record October high of 619 million pounds set in 1998. Cooler stocks of peanuts were also higher than a year earlier.

Total red meat supplies in freezers were up 2 percent from September 1999, but were 4 percent below October 1998. Frozen pork stocks were 1 percent below last month, but were up 3 percent from last year. Stocks of pork bellies increased 17 percent from last month and were 37 percent above the October 1998 stocks.

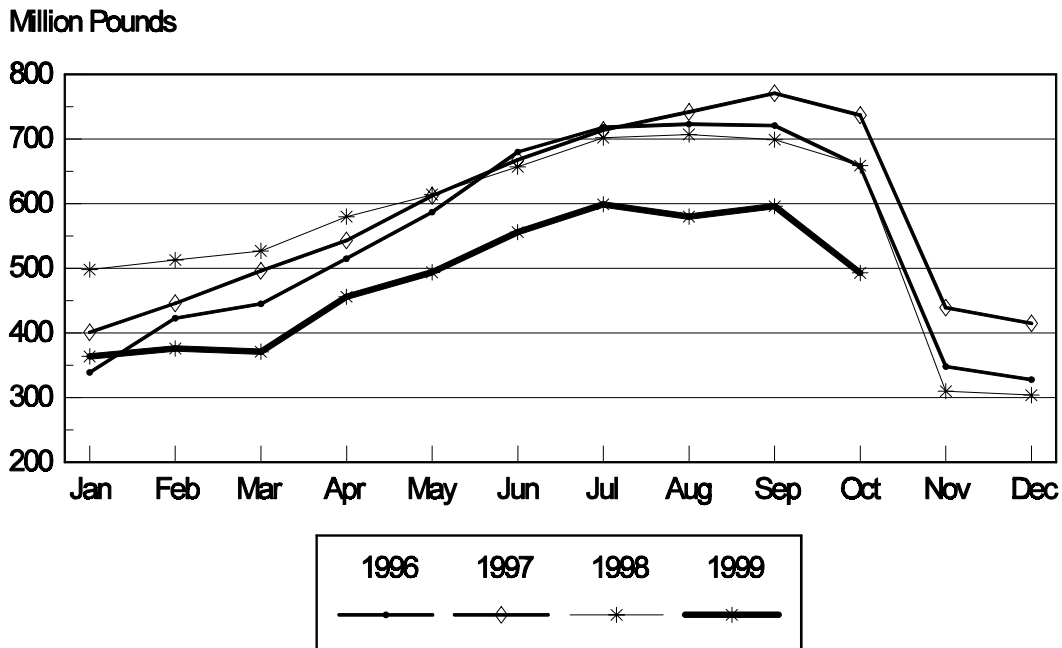
Total frozen poultry supplies were down 11 percent from last month, but were 3 percent above last year's level. Total stocks of chicken were down 7 percent from last month, but were 34 percent above October 1998. Total pounds of turkey in freezers decreased 17 percent from last month and were 25 percent below last year.

Public cooler occupancy was at 48 percent of capacity, down 7 points from last year. Public freezer occupancy at 66 percent was 4 percentage points below last year.

Table of Contents

	Page
Stocks in Cold Storage: By Commodity, United States, October 1999	3
Stocks in Cold Storage: By Commodity, Region, and United States, September 30, 1999	6
Stocks in Cold Storage: By Commodity, Region, and United States, October 31, 1999	10
Public General Warehouses: Cold Storage Space Occupied by Region and United States, October 1999	14
Survey and Estimating Procedures, Revision Policy and Reliability	15

Total Frozen Turkeys Cold Storage Stocks, 1996-1999 United States



**Stocks in Cold Storage: By Commodity,
United States, October 1999**

Commodity	Stocks in All Warehouses			Percent of		Public Warehouse Stocks
	Oct 31, 1998	Sep 30, 1999	Oct 31, 1999	Oct 1998	Sep 1999	Oct 31, 1999
	<i>1,000 Pounds</i>	<i>1,000 Pounds</i>	<i>1,000 Pounds</i>	<i>Percent</i>	<i>Percent</i>	<i>1,000 Lbs</i>
Fresh Fruit						
Apples						
Regular Storage	2,317,691	946,647	2,206,464	95	233	
Controlled Atmosphere	4,478,605	1,888,114	3,968,193	89	210	
Total	6,796,296	2,834,761	6,174,657	91	218	5,379
Pears						
Bartlett	62,098	191,042	112,708	182	59	
Other Varieties	450,664	360,591	399,310	89	111	
Total	512,762	551,633	512,018	100	93	8,634
Nuts						
Shelled						
Peanuts	241,427	417,594	434,996	180	104	
Pecans	29,092	18,783	12,323	42	66	
Other Shelled	92,743	89,457	115,210	124	129	
Total	363,262	525,834	562,529	155	107	338,455
In-Shell						
Peanuts	12,095	17,699	21,218	175	120	
Pecans	29,185	3,933	9,588	33	244	
Other In-Shell	11,762	5,938	9,638	82	162	
Total	53,042	27,570	40,444	76	147	21,060
Dairy Products						
Butter, Total	31,164	71,473	59,864	192	84	50,599
(Government Owned)	8	214	368		172	
Natural Cheese						
American, Total	394,692	474,846	456,976	116	96	
(Government Owned)	216	9	53	25	589	
Swiss	12,362	10,595	10,831	88	102	
Other Natural Cheese	115,658	167,220	154,933	134	93	
Total	522,712	652,661	622,740	119	95	373,416
Eggs, Frozen						
Whites	857	577	481	56	83	
Yolks	741	697	692	93	99	
Whole & Mixed	6,683	7,202	7,490	112	104	
Unclassified	750	1,006	1,158	154	115	
Total	9,031	9,482	9,821	109	104	9,388
Frozen Poultry						
Chicken						
Broilers (Whole)	12,692	30,749	40,260	317	131	
Hens	5,848	9,880	9,353	160	95	
Other Chicken	600,342	853,986	779,127	130	91	
Total	618,882	894,615	828,740	134	93	
Turkey						
Whole Turkeys	439,273	400,438	316,048	72	79	
Other Turkey	219,459	195,920	176,778	81	90	
Total	658,732	596,358	492,826	75	83	
Ducks	5,092	5,990	5,360	105	89	
Total	1,282,706	1,496,963	1,326,926	103	89	1,243,668

**Stocks in Cold Storage: By Commodity,
United States, October 1999 (Continued)**

Commodity	Stocks in All Warehouses			Percent of		Public Warehouse Stocks
	Oct 31, 1998	Sep 30, 1999	Oct 31, 1999	Oct 1998	Sep 1999	Oct 31, 1999
	<i>1,000 Pounds</i>	<i>1,000 Pounds</i>	<i>1,000 Pounds</i>	<i>Percent</i>	<i>Percent</i>	<i>1,000 Lbs</i>
Frozen Fruit						
Apples	51,646	55,378	71,090	138	128	
Apricots	15,037	12,119	11,069	74	91	
Blackberries, Total	26,137	30,622	28,504	109	93	
IQF	14,698	20,392	18,614	127	91	
Pails and Tubs	3,622	2,245	2,052	57	91	
Barrels, 400 lbs net	6,330	6,511	6,119	97	94	
Concentrate	1,487	1,474	1,719	116	117	
Blueberries	88,827	95,381	81,768	92	86	
Boysenberries	5,219	6,355	5,819	111	92	
Cherries, Tart (RSP)	143,413	149,070	136,134	95	91	
Cherries, Tart (Juice)	4,837	2,440	2,329	48	95	
Cherries, Sweet	16,042	14,774	13,989	87	95	
Grapes	5,630	4,565	5,469	97	120	
Peaches	89,623	83,245	83,621	93	100	
Raspberries, Black	1,020	1,908	1,817	178	95	
Raspberries, Red, Total	50,640	73,351	65,499	129	89	
IQF	13,409	18,907	17,865	133	94	
Pails and Tubs	12,057	17,454	15,979	133	92	
Barrels, 400 lbs net	20,525	35,343	28,749	140	81	
Concentrate	4,649	1,647	2,906	63	176	
Strawberries, Total	261,237	332,995	319,357	122	96	
Other Frozen Fruit	520,250	273,741	486,846	94	178	
Total	1,279,558	1,135,944	1,313,311	103	116	962,736
Frozen Juice						
Orange Juice Conc. ¹	1,470,699	1,443,391	1,181,903	80	82	
(Gallon Equivalent)	148,616	145,856	119,432			
Other Juice Concentrate	408,225	353,108	344,675	84	98	
Total	1,878,924	1,796,499	1,526,578	81	85	198,296
Frozen Vegetables						
Asparagus	7,668	16,049	15,070	197	94	
Limas, Fordhook	19,290	14,746	14,980	78	102	
Limas, Baby	77,469	57,236	72,872	94	127	
Green Beans, Reg. Cut	228,099	216,690	196,200	86	91	
Green Beans, Fr. Style	48,408	44,215	41,403	86	94	
Broccoli, Spears	19,959	46,735	37,254	187	80	
Broccoli, Chopped & Cut	80,138	134,059	130,193	162	97	
Brussels Sprouts	7,150	9,075	13,424	188	148	
Carrots, Diced	64,772	37,333	55,015	85	147	
Carrots, Other	179,064	144,463	209,253	117	145	
Cauliflower	39,952	33,861	47,988	120	142	
Corn, Cut	502,563	389,471	433,818	86	111	
Corn, Cob	326,682	255,214	300,626	92	118	
Mixed Vegetables	49,682	50,863	53,882	108	106	
Okra	64,033	61,690	54,885	86	89	
Onion Rings	17,477	14,207	18,580	106	131	
Onions, Other	27,070	31,338	34,902	129	111	
Blackeye Peas	9,511	7,479	6,813	72	91	
Green Peas	341,715	376,230	345,231	101	92	
Peas & Carrots Mixed	9,001	9,620	10,022	111	104	
Spinach	69,712	99,790	84,607	121	85	
Squash, Summer/Zucchini	80,634	63,957	63,234	78	99	
Southern Greens	19,606	16,888	20,469	104	121	
Other Vegetables	297,805	309,624	322,007	108	104	
Total	2,587,460	2,440,833	2,582,728	100	106	1,721,631

See footnotes at end of table.

--continued

**Stocks in Cold Storage: By Commodity,
United States, October 1999 (Continued)**

Commodity	Stocks in All Warehouses			Percent of		Public Warehouse Stocks
	Oct 31, 1998	Sep 30, 1999	Oct 31, 1999	Oct 1998	Sep 1999	Oct 31, 1999
	<i>1,000 Pounds</i>	<i>1,000 Pounds</i>	<i>1,000 Pounds</i>	<i>Percent</i>	<i>Percent</i>	<i>1,000 Lbs</i>
Potatoes						
French Fries	1,076,256	1,002,245	1,076,591	100	107	
Other Frozen	264,713	233,301	234,602	89	101	
Total	1,340,969	1,235,546	1,311,193	98	106	945,423
Meat						
Frozen Beef						
Boneless ²	320,959	255,512	271,805	85	106	
Beef Cuts ³	37,272	38,857	46,398	124	119	
Total	358,231	294,369	318,203	89	108	308,899
(Government Owned)	2,944	4,202	4,855	165	116	
Frozen Pork						
Picnics, Bone-in	15,645	7,925	9,869	63	125	
Hams, Total	99,099	135,462	115,679	117	85	105,428
Bone-in	57,506	85,996	72,326	126	84	66,776
Boneless ⁴	41,593	49,466	43,353	104	88	38,652
Bellies	16,440	19,273	22,488	137	117	
Loins, Total	14,734	16,120	15,861	108	98	12,808
Bone-in	7,800	8,360	8,240	106	99	
Boneless ⁵	6,934	7,760	7,621	110	98	
Ribs ⁶	48,243	37,135	46,587	97	125	
Butts	12,253	7,067	10,790	88	153	
Trimmings ⁷	54,599	46,387	51,471	94	111	
Other ⁸	84,575	89,839	88,064	104	98	
Variety Meats ⁹	51,134	56,919	50,024	98	88	
Unclassified ¹⁰	15,163	14,458	13,978	92	97	
Total	411,885	430,585	424,811	103	99	353,662
(Government Owned)	1,565	6,691	5,819	372	87	
Other						
Veal	4,295	3,802	4,367	102	115	
Lamb & Mutton	12,558	9,815	9,158	73	93	
Total	16,853	13,617	13,525	80	99	13,448
Canned						
Canned Hams	7,248	7,048	5,627	78	80	
Other Canned Meat	702	660	584	83	88	
Total	7,950	7,708	6,211	78	81	3,632
Total	794,919	746,279	762,750	96	102	679,641
Miscellaneous						
Cooler	1,020,548	1,283,984	1,142,167	112	89	544,015
Freezer	2,034,626	1,955,614	1,993,040	98	102	1,928,202
Total	3,055,174	3,239,598	3,135,207	103	97	2,472,217
Commodities						
Stored in Coolers	9,276,572	5,884,151	9,060,766	98	154	1,294,591
Stored in Freezers	11,231,407	10,880,925	10,880,000	97	100	7,735,952
Total	20,507,979	16,765,076	19,940,766	97	119	9,030,543

¹ Adjusted to 42.0 degrees Brix equivalent (9.896 pounds per gallon).

² Includes all boxed boneless beef, such as ground beef, roasts, steaks, loins, strips, rounds, trimmings, etc. Variety meats (edible offal), such as tongues, livers, hearts, kidneys, and other organs removed from slaughtered beef, are included as miscellaneous freezer stocks.

³ Includes all boxed primal beef cuts, bone-in.

⁴ Includes full ham, bone removed and individual muscles separated.

⁵ Includes pork tenderloins.

⁶ Includes spareribs and backribs.

⁷ Includes 42% regular trimmings, 72% special trimmings, boneless picnic meat, jowls, neckbone trimmings, blade, cheek, head, and shank meat, etc. Packaged bacon, sausage, and processed items, such as hot dogs and luncheon meats, are included in miscellaneous cooler or freezer stocks.

⁸ Includes ears, tails, feet, neckbones and snouts.

⁹ Includes tongues, kidneys, livers, stomachs, hearts, chitterlings, salivary glands, and other organs removed from slaughtered hogs.

¹⁰ Includes pork unable to be classified elsewhere in this report.

**Stocks in Cold Storage: By Commodity, Region,
and United States, September 30, 1999**

Commodity	New England	Middle Atlantic	East North Central	West North Central	South Atlantic
	<i>1,000 Pounds</i>	<i>1,000 Pounds</i>	<i>1,000 Pounds</i>	<i>1,000 Pounds</i>	<i>1,000 Pounds</i>
Nuts					
Shelled					
Peanuts		73	110	24	274,521
Pecans ¹		109			5,170
In-Shell					
Pecans ¹					322
Dairy Products					
Natural Cheese					
American, Total	25,765	41,574	228,399	106,284	631
Other Natural Cheese	559	11,954	90,966	53,486	1,280
Frozen Poultry					
Broilers (Whole)	80	1,234	1,614	1,542	12,190
Hens	2	133	1,703	1,793	3,191
Other Chicken	1,841	5,698	15,670	30,289	298,711
Total	1,923	7,065	18,987	33,624	314,092
Whole Turkeys	13,140	46,143	38,144	47,178	63,020
Other Turkey	308	11,854	15,824	57,744	55,491
Total	13,448	57,997	53,968	104,922	118,511
Ducks	48	201	4,719	177	87
Total	15,419	65,263	77,674	138,723	432,690
Frozen Fruit					
Apples	19	17,397	22,969	102	174
Blueberries	17,425	10,762	43,472	283	3,308
Cherries, Tart (RSP)	39	8,777	126,300	43	29
Cherries, Sweet		617	10,249	65	156
Peaches	41	2,643	5,202	51	605
Raspberries, Red	355	1,584	820	137	89
Strawberries, Total	130	3,341	5,097	1,261	1,521
Other Frozen Fruit	60,672	19,737	132,562	236	1,254

See footnotes at end of table.

--continued

**Stocks in Cold Storage: By Commodity, Region,
and United States, September 30, 1999 (continued)**

Commodity	East South Central	West South Central	Mountain	Pacific	US Total
	<i>1,000 Pounds</i>	<i>1,000 Pounds</i>	<i>1,000 Pounds</i>	<i>1,000 Pounds</i>	<i>1,000 Pounds</i>
Nuts					
Shelled					
Peanuts	39,092	103,092	172	510	417,594
Pecans ¹	119	13,280		105	18,783
In-Shell					
Pecans ¹	1,005	2,606			3,933
Dairy Products					
Natural Cheese					
American, Total		259	10,459	61,475	474,846
Other Natural Cheese	150	205	468	8,152	167,220
Frozen Poultry					
Broilers (Whole)	2,211	8,814	293	2,771	30,749
Hens	1,939	623	175	321	9,880
Other Chicken	180,318	275,221	3,378	42,860	853,986
Total	184,468	284,658	3,846	45,952	894,615
Whole Turkeys	7,112	70,888	18,369	96,444	400,438
Other Turkey	922	32,291	4,356	17,130	195,920
Total	8,034	103,179	22,725	113,574	596,358
Ducks	82	185	35	456	5,990
Total	192,584	388,022	26,606	159,982	1,496,963
Frozen Fruit					
Apples	77	3,042	142	11,456	55,378
Blueberries	116	735	381	18,899	95,381
Cherries, Tart (RSP)	47	950	3,174	9,711	149,070
Cherries, Sweet	4	133	762	2,788	14,774
Peaches	90	1,400	104	73,109	83,245
Raspberries, Red	106	720	12	69,528	73,351
Strawberries, Total	4,515	17,671	5,738	293,721	332,995
Other Frozen Fruit	265	11,900	1,022	46,093	273,741

See footnotes at end of table.

--continued

**Stocks in Cold Storage: By Commodity, Region,
and United States, September 30, 1999 (continued)**

Commodity	New England	Middle Atlantic	East North Central	West North Central	South Atlantic
	<i>1,000 Pounds</i>	<i>1,000 Pounds</i>	<i>1,000 Pounds</i>	<i>1,000 Pounds</i>	<i>1,000 Pounds</i>
Frozen Juice					
Orange Juice Conc. ²	16		2,232	501	1,387,917
Other Juice Concentrate	832	19,148	10,182	2,047	144,055
Frozen Vegetables ³					
Asparagus		389	7,068	56	822
Limas, Fordhook		358	381	245	1,369
Limas, Baby		2,308	2,105	444	14,593
Green Beans, Reg. Cut		37,543	50,605	2,546	15,428
Green Beans, Fr. Style		9,186	8,010	272	1,013
Broccoli, Spears		5,076	190	1,755	3,830
Broccoli, Chopped & Cut		4,851	8,953	3,964	7,237
Brussels Sprouts		811	219	360	505
Carrots, Diced		2,875	6,703	883	7,711
Carrots, Other		6,317	8,177	1,473	8,990
Cauliflower		1,909	2,319	518	1,325
Corn, Cut		43,180	33,032	22,414	23,139
Corn, Cob		18,064	4,191	31,386	9,759
Mixed Vegetables		2,080	4,874	1,219	7,043
Okra		1,735	227	1,422	19,963
Onion Rings		755	8,889	1,174	1,335
Onions, Other		2,923	5,934	582	3,516
Blackeye Peas		372	353	7	5,751
Green Peas		47,549	29,301	19,579	13,508
Peas & Carrots Mixed		541	396	53	567
Spinach		7,693	1,536	733	9,053
Squash, Summer/Zucchini		3,305	14,012	730	18,260
Southern Greens		1,980	31	19	6,439
Other Vegetables		32,161	36,919	10,847	37,790
Potatoes					
French Fries	26,819	32,438	64,237	68,926	37,542
Other Frozen	6,666	9,456	34,710	6,931	5,407
Meat					
Frozen Beef					
Boneless	5,030	24,505	31,700	60,765	17,449
Beef Cuts	1,588	2,310	4,223	8,529	922
Frozen Pork					
Ribs	262	923	13,516	14,913	3,744
Trimming	146	1,898	8,362	23,545	6,243
Other	3,770	3,949	21,279	25,433	10,475
Other					
Veal	250	335	2,168	248	41
Lamb & Mutton	407	3,295	1,310	825	1,095

See footnotes at end of table.

--continued

**Stocks in Cold Storage: By Commodity, Region,
and United States, September 30, 1999 (continued)**

Commodity	East South Central	West South Central	Mountain	Pacific	US Total
	<i>1,000 Pounds</i>	<i>1,000 Pounds</i>	<i>1,000 Pounds</i>	<i>1,000 Pounds</i>	<i>1,000 Pounds</i>
Frozen Juice					
Orange Juice Concentrate	409	2,995	2,622	46,699	1,443,391
Other Juice Concentrate	2,493	13,806	509	160,036	353,108
Frozen Vegetables ³					
Asparagus		291	145	7,278	16,049
Limas, Fordhook		85	196	12,112	14,746
Limas, Baby		348	8,464	28,974	57,236
Green Beans, Reg. Cut		1,125	140	109,303	216,690
Green Beans, Fr. Style		231	107	25,396	44,215
Broccoli, Spears		20,116	1,973	13,795	46,735
Broccoli, Chopped & Cut		45,552	2,667	60,835	134,059
Brussels Sprouts		833	4	6,343	9,075
Carrots, Diced		2,007	153	17,001	37,333
Carrots, Other		8,224	371	110,911	144,463
Cauliflower		5,117	39	22,634	33,861
Corn, Cut		2,176	8,028	257,502	389,471
Corn, Cob		1,195	103	190,516	255,214
Mixed Vegetables		5,549	155	29,943	50,863
Okra		37,784		559	61,690
Onion Rings		677	721	656	14,207
Onions, Other		1,345	2,661	14,377	31,338
Blackeye Peas		847		149	7,479
Green Peas		3,929	19,275	243,089	376,230
Peas & Carrots Mixed		58	15	7,990	9,620
Spinach		9,162	10,062	61,551	99,790
Squash, Summer/Zucchini		6,947	161	20,542	63,957
Southern Greens		7,902		517	16,888
Other Vegetables		38,644	4,665	148,598	309,624
Potatoes					
French Fries	1,182	18,591	279,374	473,136	1,002,245
Other Frozen	730	8,353	50,884	110,164	233,301
Meat					
Frozen Beef					
Boneless ⁴	2,340	60,635	7,569	45,519	255,512
Beef Cuts ⁵	230	5,973	5,437	9,645	38,857
Frozen Pork					
Ribs ⁶	1,381	1,269	37	1,090	37,135
Trimming ⁷	304	2,739	102	3,048	46,387
Other ⁸	7,955	12,963	302	3,713	89,839
Other					
Veal	27	107		626	3,802
Lamb & Mutton	1	740	572	1,570	9,815

¹ East North Central combined with South Atlantic. Mountain and West North Central combined with West South Central.

² Middle Atlantic combined with South Atlantic.

³ New England combined with Middle Atlantic. East South Central combined with South Atlantic.

⁴ Includes all boxed boneless beef, such as ground beef, roasts, steaks, loins, strips, rounds, trimmings, etc. Variety meats (edible offal), such as tongues, livers, hearts, kidneys, and other organs removed from slaughtered beef, are included as miscellaneous freezer stocks.

⁵ Includes all boxed primal beef cuts, bone-in.

⁶ Includes spareribs and backribs.

⁷ Includes 42% regular trimmings, 72% special trimmings, boneless picnic meat, jowls, neckbone trimmings, blade, cheek, head, and shank meat, etc. Packaged bacon, sausage, and processed items, such as hot dogs and luncheon meats, are included in miscellaneous cooler or freezer stocks.

⁸ Includes ears, tails, feet, neckbones and snouts.

**Stocks in Cold Storage: By Commodity, Region,
and United States, October 31, 1999**

Commodity	New England	Middle Atlantic	East North Central	West North Central	South Atlantic
	<i>1,000 Pounds</i>	<i>1,000 Pounds</i>	<i>1,000 Pounds</i>	<i>1,000 Pounds</i>	<i>1,000 Pounds</i>
Total Fresh Apples	110,171	682,614	596,984	8,141	398,114
Nuts					
Shelled					
Peanuts		5	103	25	273,661
Pecans ¹		75			3,386
In-Shell					
Pecans ¹		4			4,383
Dairy Products					
Natural Cheese					
American, Total	22,685	41,299	223,792	94,901	645
Other Natural Cheese	602	9,947	89,352	45,308	1,105
Frozen Poultry					
Broilers (Whole)	80	1,275	1,549	771	16,894
Hens	1	85	1,454	1,669	3,232
Other Chicken	1,693	6,550	16,213	32,571	212,042
Total	1,774	7,910	19,216	35,011	232,168
Whole Turkeys	12,956	39,523	33,419	45,267	49,601
Other Turkey	285	12,665	15,008	55,122	45,587
Total	13,241	52,188	48,427	100,389	95,188
Ducks	51	143	4,485	97	25
Total	15,066	60,241	72,128	135,497	327,381
Frozen Fruit					
Apples	9	18,413	36,338	92	163
Blueberries	14,650	9,917	36,917	245	1,727
Cherries, Tart (RSP)	35	8,434	114,444	40	175
Cherries, Sweet		803	9,552	86	137
Peaches	41	2,693	5,435	55	713
Raspberries, Red	331	1,804	736	123	76
Strawberries, Total	127	3,248	5,038	2,435	1,694
Other Frozen Fruit	75,590	34,570	261,563	3,654	847

See footnotes at end of table.

--continued

**Stocks in Cold Storage: By Commodity, Region,
and United States, October 31, 1999 (continued)**

Commodity	East South Central	West South Central	Mountain	Pacific	US Total
	<i>1,000 Pounds</i>	<i>1,000 Pounds</i>	<i>1,000 Pounds</i>	<i>1,000 Pounds</i>	<i>1,000 Pounds</i>
Total Fresh Apples	233	1,303	58,375	4,318,722	6,174,657
Nuts					
Shelled					
Peanuts	47,179	113,412	176	435	434,996
Pecans ¹	131	8,641		90	12,323
In-Shell					
Pecans ¹	263	4,938			9,588
Dairy Products					
Natural Cheese					
American, Total		350	10,372	62,932	456,976
Other Natural Cheese	150	163	246	8,060	154,933
Frozen Poultry					
Broilers (Whole)	1,830	15,530	366	1,965	40,260
Hens	1,935	530	175	272	9,353
Other Chicken	171,834	288,017	3,239	46,968	779,127
Total	175,599	304,077	3,780	49,205	828,740
Whole Turkeys	5,294	43,835	18,349	67,804	316,048
Other Turkey	893	28,141	4,586	14,491	176,778
Total	6,187	71,976	22,935	82,295	492,826
Ducks	71	91	9	388	5,360
Total	181,857	376,144	26,724	131,888	1,326,926
Frozen Fruit					
Apples	156	3,016	159	12,744	71,090
Blueberries	81	877	264	17,090	81,768
Cherries, Tart (RSP)	55	1,051	2,852	9,048	136,134
Cherries, Sweet	4	147	624	2,636	13,989
Peaches	112	1,032	126	73,414	83,621
Raspberries, Red	89	628	11	61,701	65,499
Strawberries, Total	3,944	22,403	5,205	275,263	319,357
Other Frozen Fruit	259	10,706	590	99,067	486,846

See footnotes at end of table.

--continued

**Stocks in Cold Storage: By Commodity, Region,
and United States, October 31, 1999 (continued)**

Commodity	New England	Middle Atlantic	East North Central	West North Central	South Atlantic
	<i>1,000 Pounds</i>	<i>1,000 Pounds</i>	<i>1,000 Pounds</i>	<i>1,000 Pounds</i>	<i>1,000 Pounds</i>
Frozen Juice					
Orange Juice Conc. ²	12		1,944	562	1,135,103
Other Juice Concentrate	620	11,551	11,351	2,030	142,987
Frozen Vegetables ³					
Asparagus		396	6,778	65	429
Limas, Fordhook		598	377	212	1,816
Limas, Baby		4,087	1,834	905	19,419
Green Beans, Reg. Cut		32,392	45,304	2,277	13,542
Green Beans, Fr. Style		7,462	7,467	247	1,592
Broccoli, Spears		4,560	184	1,672	1,860
Broccoli, Chopped & Cut		5,205	8,853	4,017	7,061
Brussels Sprouts		1,108	196	316	580
Carrots, Diced		3,957	14,157	964	2,929
Carrots, Other		9,167	12,976	2,104	11,272
Cauliflower		2,140	3,041	913	1,257
Corn, Cut		46,355	33,542	23,991	17,496
Corn, Cob		17,374	4,715	34,466	9,217
Mixed Vegetables		2,473	3,618	1,335	6,331
Okra		1,683	187	1,391	20,165
Onion Rings		904	10,036	1,698	1,763
Onions, Other		3,238	4,982	327	3,548
Blackeye Peas		253	360	24	5,146
Green Peas		43,384	25,944	15,734	11,724
Peas & Carrots Mixed		564	391	46	651
Spinach		9,004	1,545	632	6,683
Squash, Summer/Zucchini		4,090	15,838	671	15,688
Southern Greens		2,773	18	15	7,825
Other Vegetables		30,907	37,268	14,532	42,119
Potatoes					
French Fries	29,914	36,443	62,261	86,743	27,173
Other Frozen	5,549	7,458	36,055	8,015	7,192
Meat					
Frozen Beef					
Boneless ⁴	5,564	31,939	34,482	61,187	18,505
Beef Cuts ⁵	1,309	1,136	5,856	8,155	2,289
Frozen Pork					
Ribs ⁶	315	1,131	14,847	19,831	6,164
Trimming ⁷	132	2,522	9,594	24,277	6,365
Other ⁸	3,948	4,102	20,292	30,672	2,542
Other					
Veal	234	438	2,076	351	48
Lamb & Mutton	369	3,409	1,054	888	1,028

See footnotes at end of table.

--continued

**Stocks in Cold Storage: By Commodity, Region,
and United States, October 31, 1999 (continued)**

Commodity	East South Central	West South Central	Mountain	Pacific	US Total
	<i>1,000 Pounds</i>	<i>1,000 Pounds</i>	<i>1,000 Pounds</i>	<i>1,000 Pounds</i>	<i>1,000 Pounds</i>
Frozen Juice					
Orange Juice Concentrate	362	2,633	2,252	39,035	1,181,903
Other Juice Concentrate	2,363	13,851	494	159,428	344,675
Frozen Vegetables ³					
Asparagus		416	218	6,768	15,070
Limas, Fordhook		359	196	11,422	14,980
Limas, Baby		566	11,788	34,273	72,872
Green Beans, Reg. Cut		1,292	427	100,966	196,200
Green Beans, Fr. Style		174	68	24,393	41,403
Broccoli, Spears		13,883	1,377	13,718	37,254
Broccoli, Chopped & Cut		43,315	3,008	58,734	130,193
Brussels Sprouts		577	645	10,002	13,424
Carrots, Diced		1,685	216	31,107	55,015
Carrots, Other		7,826	500	165,408	209,253
Cauliflower		5,145	1,741	33,751	47,988
Corn, Cut		2,890	7,800	301,744	433,818
Corn, Cob		1,433	56	233,365	300,626
Mixed Vegetables		6,911	101	33,113	53,882
Okra		30,878		581	54,885
Onion Rings		2,275	1,147	757	18,580
Onions, Other		900	3,000	18,907	34,902
Blackeye Peas		868		162	6,813
Green Peas		4,020	17,803	226,622	345,231
Peas & Carrots Mixed		181	39	8,150	10,022
Spinach		7,713	9,681	49,349	84,607
Squash, Summer/Zucchini		6,379	206	20,362	63,234
Southern Greens		9,249		589	20,469
Other Vegetables		34,702	4,179	158,300	322,007
Potatoes					
French Fries	1,300	11,981	322,823	497,953	1,076,591
Other Frozen	735	11,042	54,918	103,638	234,602
Meat					
Frozen Beef					
Boneless ⁴	2,618	61,969	7,627	47,914	271,805
Beef Cuts ⁵	254	8,817	6,659	11,923	46,398
Frozen Pork					
Ribs ⁶	1,741	1,320	52	1,186	46,587
Trimming ⁷	238	4,372	316	3,655	51,471
Other ⁸	9,213	13,499	203	3,593	88,064
Other					
Veal	22	64		1,134	4,367
Lamb & Mutton	1	457	565	1,387	9,158

¹ East North Central combined with South Atlantic. Mountain and West North Central Combined with West South Central.

² Middle Atlantic combined with South Atlantic.

³ New England combined with Middle Atlantic. East South Central combined with South Atlantic.

⁴ Includes all boxed boneless beef, such as ground beef, roasts, steaks, loins, strips, rounds, trimmings, etc. Variety meats (edible offal), such as tongues, livers, hearts, kidneys, and other organs removed from slaughtered beef, are included as miscellaneous freezer stocks.

⁵ Includes all boxed primal beef cuts, bone-in.

⁶ Includes spareribs and backribs.

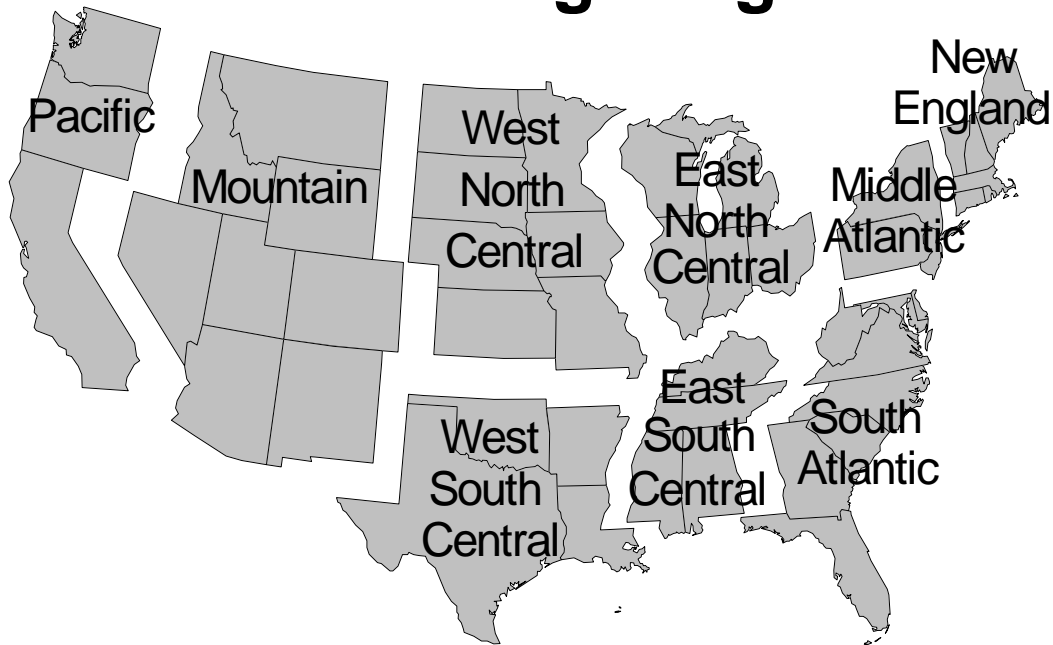
⁷ Includes 42% regular trimmings, 72% special trimmings, boneless picnic meat, jowls, neckbone trimmings, blade, cheek, head, and shank meat, etc. Packaged bacon, sausage, and processed items, such as hot dogs and luncheon meats, are included in miscellaneous cooler or freezer stocks.

⁸ Includes ears, tails, feet, neckbones and snouts.

**Public General Warehouses: Cold Storage Space Occupied
by Region and United States, October 1999**

Region	Cooler				Freezer			
	Usable Space	Usable Space Occupied			Usable Space	Usable Space Occupied		
		Oct 31 1999	Oct 31 1998	Sep 30 1999		Oct 31 1999	Oct 31 1998	Sep 30 1999
	<i>1,000 Cu Ft</i>	<i>Percent</i>	<i>Percent</i>	<i>Percent</i>	<i>1,000 Cu Ft</i>	<i>Percent</i>	<i>Percent</i>	<i>Percent</i>
New England	2,436	57	61	63	20,251	77	71	72
Middle Atlantic	35,173	79	64	69	119,133	84	81	82
E. North Central	48,871	59	50	50	176,383	69	64	60
W. North Central	52,046	52	39	38	153,886	61	50	52
South Atlantic	50,435	47	43	40	164,173	54	62	65
E. South Central	9,613	46	65	62	64,870	62	45	47
W. South Central	20,920	47	42	39	133,208	71	67	67
Mountain	5,946	85	74	73	48,397	71	70	75
Pacific	34,888	45	41	41	242,034	79	73	75
US	260,328	55	48	48	1,122,335	70	65	66

Cold Storage Regions



**Apples in Cold Storage: By State
and United States, October 1999**

State	All Warehouses
	Oct 31, 1999
	<i>1,000 Pounds</i>
CA	323,843
MI	535,860
N ENG	110,171
NY	380,268
OH	32,941
OR	94,806
PA	301,271
VA	281,734
WA	3,900,073
WV	54,933
Other States	158,757
US	6,174,657

Survey Procedures: Questionnaires are mailed about the 24th of each month to all operators on the list of approximately 1,400 public and private cold storage warehouses. In addition, apple data are obtained from special surveys and other sources (State Departments of Agriculture, U.S. Apple Association, etc.). All survey data represent stocks as of the end of the month.

Data are collected from warehouses artificially cooled to a temperature of 50 degrees Fahrenheit or lower, and whose food products are normally stored for 30 days or more. All food items in these facilities are reported regardless of the number of days stored at the time of the report. Also included are specialized storage facilities meeting the 30 day requirement, such as fruit houses, dairy manufacturing plants, frozen fruit, fruit juice, and vegetable processors, and poultry and meat packing plants. Excluded are stocks in space maintained by wholesalers, jobbers, distributors, chain stores, locker plants containing individual lockers, meat packer branch houses, and frozen food processors whose entire inventories are turned over more than once a month.

Estimating Procedures: Data for reporting firms are added to estimates for non-reporting firms to obtain regional and National totals. Estimates for non-reporting firms are obtained by multiplying the previous month's figure by a percent change from the previous month. The percent change is calculated for each item from totals of the current and previous month summed from firms that reported both months.

Revision Policy: Data are revised the following month based on late reports or corrected data. Final figures are published in the annual summary in February of the following year.

Reliability: Reports are received from 900 firms each month which represent about 70 percent of the total capacity. Firms that are not on the list or firms who have never reported are not represented in the data. Monthly data can vary due to different firms reporting month to month. Survey data are also subject to non-sampling errors such as omissions and mistakes in reporting and in processing the data. While these errors cannot be measured directly, they are minimized by carefully reviewing all reported data for consistency and reasonableness.

The next "Cold Storage" report will be released at 3 p.m. ET on December 20, 1999.

The United States Department of Agriculture (USDA) prohibits discrimination in all its programs on the basis of race, color, national origin, gender, religion, age, disability, political beliefs, sexual orientation, and marital or family status. (Not all prohibited bases apply to all programs.) Persons with disabilities who require alternative means for communication of program information (braille, large print, audiotape, etc.) should contact the USDA's TARGET Center at 202-720-2600 (voice and TDD).

To file a complaint of discrimination, write USDA, Director, Office of Civil Rights, Room 326-W, Whitten Building, 14th and Independence Avenue, SW, Washington, D.C., 20250-9410, or call 202-720-5964 (voice or TDD). USDA is an equal opportunity provider and employer.

ACCESS TO REPORTS!!

For your convenience, there are several ways to obtain NASS reports, data products, and services:

INTERNET ACCESS

All NASS reports are available free of charge on the worldwide Internet. For access, connect to the Internet and go to the NASS Home Page at: <http://www.usda.gov/nass/>. Select "Today's Reports" or Publications and then Reports by Calendar or Publications and then Search, by Title or Subject.

E-MAIL SUBSCRIPTION

There are two options for subscribing via e-mail. All NASS reports are available by subscription free of charge direct to your e-mail address. 1) Starting with the NASS Home Page at <http://www.usda.gov/nass/>, click on **Publications**, then click on the **Subscribe by E-mail** button which takes you to the page describing e-mail delivery of reports. Finally, click on **Go to the Subscription Page** and follow the instructions. 2) If you do NOT have Internet access, send an e-mail message to: usda-reports@usda.mannlib.cornell.edu. In the body of the message type the word: **list**.

AUTOFAX ACCESS

NASSFax service is available for some reports from your fax machine. Please call 202-720-2000, using the handset attached to your fax. Respond to the voice prompts. Document 0411 is a list of available reports.

PRINTED REPORTS OR DATA PRODUCTS

CALL OUR TOLL-FREE ORDER DESK: 800-999-6779 (U.S. and Canada)
Other areas, please call 703-834-0125 FAX: 703-834-0110
(Visa, MasterCard, check, or money order acceptable for payment.)

ASSISTANCE

For **assistance** with general agricultural statistics or further information about NASS or its products or services, contact the **Agricultural Statistics Hotline** at **800-727-9540**, 7:30 a.m. to 4:00 p.m. ET, or e-mail: nass@nass.usda.gov.