



Cold Storage

Released December 20, 1999, by the National Agricultural Statistics Service (NASS), Agricultural Statistics Board, U.S. Department of Agriculture. For information on "Cold Storage" call Linda Simpson at (202) 720-8784, office hours 7:00 a.m. to 4:30 p.m. ET.

HIGHLIGHTS

Frozen food stocks in refrigerated warehouses on November 30, 1999 were greater than year earlier levels for chicken. November 1999 stocks of chicken, at 789 million pounds, broke the previous record November high of 663 million pounds set in 1998. Cooler stocks of peanuts were also higher than a year earlier.

Total red meat supplies in freezers were down 6 percent from October 1999 and 8 percent below November 1998. Frozen pork stocks were 6 percent below last month and 7 percent below last year. Stocks of pork bellies increased 14 percent from last month, but were 38 percent below the November 1998 stocks.

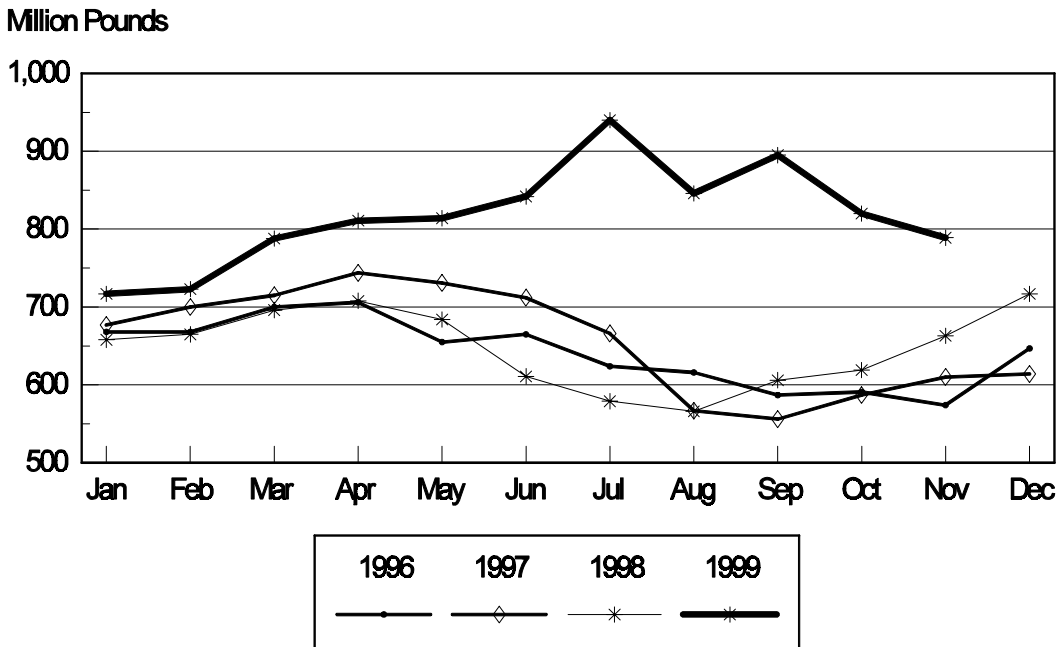
Total frozen poultry supplies were down 21 percent from last month, but were 7 percent above last year's level. Total stocks of chicken were down 4 percent from last month, but were 19 percent above November 1998. Total pounds of turkey in freezers decreased 50 percent from last month and were 20 percent below last year.

Public cooler occupancy was at 50 percent of capacity, down 4 points from last year. Public freezer occupancy at 64 percent was 5 percentage points below last year.

Table of Contents

	Page
Stocks in Cold Storage: By Commodity, United States, November 1999	3
Stocks in Cold Storage: By Commodity, Region, and United States, October 31, 1999	6
Stocks in Cold Storage: By Commodity, Region, and United States, November 30, 1999	10
Public General Warehouses: Cold Storage Space Occupied by Region and United States, November 1999	14
Apples in Cold Storage: By State and United States, November 1999	15
Survey and Estimating Procedures, Revision Policy and Reliability	16

Total Frozen Chicken Cold Storage Stocks, 1996 -1999 United States



**Stocks in Cold Storage: By Commodity,
United States, November 1999**

Commodity	Stocks in All Warehouses			Percent of		Public Warehouse Stocks
	Nov 30, 1998	Oct 31, 1999	Nov 30, 1999	Nov 1998	Oct 1999	Nov 30, 1999
	<i>1,000 Pounds</i>	<i>1,000 Pounds</i>	<i>1,000 Pounds</i>	<i>Percent</i>	<i>Percent</i>	<i>1,000 Lbs</i>
Fresh Fruit						
Apples						
Regular Storage	1,656,422	2,061,583	1,483,810	90	72	
Controlled Atmosphere	4,257,900	4,103,669	3,993,642	94	97	
Total	5,914,322	6,165,252	5,477,452	93	89	12,765
Pears						
Bartlett	24,493	112,712	56,185	229	50	
Other Varieties	359,557	399,060	342,922	95	86	
Total	384,050	511,772	399,107	104	78	5,706
Nuts						
Shelled						
Peanuts	299,823	429,902	421,404	141	98	
Pecans	21,990	12,322	12,799	58	104	
Other Shelled	100,494	115,292	120,346	120	104	
Total	422,307	557,516	554,549	131	99	333,797
In-Shell						
Peanuts	13,018	21,561	22,687	174	105	
Pecans	45,081	9,588	36,259	80	378	
Other In-Shell	9,888	9,638	7,040	71	73	
Total	67,987	40,787	65,986	97	162	22,190
Dairy Products						
Butter, Total	28,698	64,449	27,032	94	42	19,823
(Government Owned)	8	391	319		82	
Natural Cheese						
American, Total	388,529	458,569	455,014	117	99	
(Government Owned)	26	67	47	181	70	
Swiss	11,911	9,372	9,145	77	98	
Other Natural Cheese	94,029	153,072	133,819	142	87	
Total	494,469	621,013	597,978	121	96	357,107
Eggs, Frozen						
Whites	895	471	467	52	99	
Yolks	898	665	760	85	114	
Whole & Mixed	6,943	6,781	6,598	95	97	
Unclassified	560	1,053	811	145	77	
Total	9,296	8,970	8,636	93	96	8,276
Frozen Poultry						
Chicken						
Broilers (Whole)	15,418	39,080	44,161	286	113	
Hens	5,545	9,401	8,109	146	86	
Other Chicken	642,346	772,018	736,325	115	95	
Total	663,309	820,499	788,595	119	96	
Turkey						
Whole Turkeys	118,185	317,885	95,287	81	30	
Other Turkey	192,178	176,611	154,188	80	87	
Total	310,363	494,496	249,475	80	50	
Ducks	4,491	5,339	4,485	100	84	
Total	978,163	1,320,334	1,042,555	107	79	966,411

**Stocks in Cold Storage: By Commodity,
United States, November 1999 (Continued)**

Commodity	Stocks in All Warehouses			Percent of		Public Warehouse Stocks
	Nov 30, 1998	Oct 31, 1999	Nov 30, 1999	Nov 1998	Oct 1999	Nov 30, 1999
	<i>1,000 Pounds</i>	<i>1,000 Pounds</i>	<i>1,000 Pounds</i>	<i>Percent</i>	<i>Percent</i>	<i>1,000 Lbs</i>
Frozen Fruit						
Apples	59,488	70,644	73,189	123	104	
Apricots	12,806	11,066	9,735	76	88	
Blackberries, Total	24,537	27,806	25,847	105	93	
IQF	13,446	18,018	16,636	124	92	
Pails and Tubs	3,413	1,991	1,850	54	93	
Barrels, 400 lbs net	5,905	6,078	5,611	95	92	
Concentrate	1,773	1,719	1,750	99	102	
Blueberries	77,259	81,845	70,474	91	86	
Boysenberries	4,760	5,808	5,528	116	95	
Cherries, Tart (RSP)	133,236	136,220	125,985	95	92	
Cherries, Tart (Juice)	3,303	2,336	2,254	68	96	
Cherries, Sweet	15,167	13,988	13,104	86	94	
Grapes	5,985	5,512	5,284	88	96	
Peaches	89,213	83,674	78,453	88	94	
Raspberries, Black	871	1,817	1,581	182	87	
Raspberries, Red, Total	46,179	65,628	59,891	130	91	
IQF	12,429	18,007	17,483	141	97	
Pails and Tubs	12,228	15,994	15,846	130	99	
Barrels, 400 lbs net	16,937	28,721	23,561	139	82	
Concentrate	4,585	2,906	3,001	65	103	
Strawberries, Total	235,817	319,436	315,134	134	99	
Pkgs. 20 Oz. & Less	167,902		164,476	98		
Pkgs. Over 20 Oz.	67,915		150,658	222		
Other Frozen Fruit	644,761	487,221	493,032	76	101	
Total	1,353,382	1,313,001	1,279,491	95	97	939,858
Frozen Juice						
Orange Juice Conc. ¹	1,540,232	1,181,958	1,114,508	72	94	
(Gallon Equivalent)	155,642	119,438	112,622			
Other Juice Concentrate	416,639	344,284	349,439	84	101	
Total	1,956,871	1,526,242	1,463,947	75	96	202,506
Frozen Vegetables						
Asparagus	6,319	15,083	13,987	221	93	
Limas, Fordhook	16,727	14,935	15,423	92	103	
Limas, Baby	76,347	71,374	64,644	85	91	
Green Beans, Reg. Cut	202,372	196,364	171,362	85	87	
Green Beans, Fr. Style	45,728	41,629	44,180	97	106	
Broccoli, Spears	22,391	38,622	37,145	166	96	
Broccoli, Chopped & Cut	84,492	130,965	124,262	147	95	
Brussels Sprouts	12,935	13,118	19,884	154	152	
Carrots, Diced	82,443	63,267	98,781	120	156	
Carrots, Other	196,460	209,379	226,195	115	108	
Cauliflower	43,110	45,986	55,799	129	121	
Corn, Cut	452,746	424,832	368,944	81	87	
Corn, Cob	296,191	294,642	273,158	92	93	
Mixed Vegetables	45,778	51,834	52,484	115	101	
Okra	55,588	54,499	51,085	92	94	
Onion Rings	17,544	18,482	18,619	106	101	
Onions, Other	25,965	35,573	40,907	158	115	
Blackeye Peas	9,106	6,769	6,829	75	101	
Green Peas	309,940	344,805	304,003	98	88	
Peas & Carrots Mixed	8,340	10,024	9,436	113	94	
Spinach	68,013	84,424	79,573	117	94	
Squash, Summer/Zucchini	75,914	63,861	59,812	79	94	
Southern Greens	28,255	21,967	28,622	101	130	
Other Vegetables	304,447	325,418	306,331	101	94	
Total	2,487,151	2,577,852	2,471,465	99	96	1,657,844

See footnotes at end of table.

--continued

**Stocks in Cold Storage: By Commodity,
United States, November 1999 (Continued)**

Commodity	Stocks in All Warehouses			Percent of		Public Warehouse Stocks
	Nov 30, 1998	Oct 31, 1999	Nov 30, 1999	Nov 1998	Oct 1999	Nov 30, 1999
	<i>1,000 Pounds</i>	<i>1,000 Pounds</i>	<i>1,000 Pounds</i>	<i>Percent</i>	<i>Percent</i>	<i>1,000 Lbs</i>
Potatoes						
French Fries	1,030,985	1,073,381	1,021,519	99	95	
Other Frozen	259,495	234,450	236,945	91	101	
Total	1,290,480	1,307,831	1,258,464	98	96	912,282
Meat						
Frozen Beef						
Boneless ²	290,854	276,407	260,098	89	94	
Beef Cuts ³	37,329	46,067	41,625	112	90	
Total	328,183	322,474	301,723	92	94	296,786
(Government Owned)	3,544	4,283	3,907	110	91	
Frozen Pork						
Picnics, Bone-in	11,109	10,051	10,148	91	101	
Hams, Total	76,724	118,246	81,531	106	69	74,451
Bone-in	44,313	72,246	47,934	108	66	44,457
Boneless ⁴	32,411	46,000	33,597	104	73	29,994
Bellies	41,711	22,489	25,711	62	114	
Loins, Total	22,044	16,280	21,989	100	135	17,631
Bone-in	14,125	8,276	11,162	79	135	
Boneless ⁵	7,919	8,004	10,827	137	135	
Ribs ⁶	60,621	46,560	56,085	93	120	
Butts	18,500	10,549	9,854	53	93	
Trimming ⁷	60,806	52,497	53,319	88	102	
Other ⁸	80,246	91,020	89,991	112	99	
Variety Meats ⁹	56,333	56,383	51,788	92	92	
Unclassified ¹⁰	15,343	13,985	11,296	74	81	
Total	443,437	438,060	411,712	93	94	342,679
(Government Owned)	1,631	6,960	6,984	428	100	
Other						
Veal	5,046	4,325	4,319	86	100	
Lamb & Mutton	11,870	9,210	8,967	76	97	
Total	16,916	13,535	13,286	79	98	13,243
Canned						
Canned Hams	4,671	5,623	6,012	129	107	
Other Canned Meat	916	584	461	50	79	
Total	5,587	6,207	6,473	116	104	3,334
Total	794,123	780,276	733,194	92	94	656,042
Miscellaneous						
Cooler	931,660	1,146,043	939,200	101	82	521,986
Freezer	1,999,711	2,010,216	1,876,991	94	93	1,813,272
Total	2,931,371	3,156,259	2,816,191	96	89	2,335,258
Commodities						
Stored in Coolers	8,220,382	9,048,590	8,040,745	98	89	1,256,885
Stored in Freezers	10,892,288	10,902,964	10,155,302	93	93	7,172,980
Total	19,112,670	19,951,554	18,196,047	95	91	8,429,865

¹ Adjusted to 42.0 degrees Brix equivalent (9.896 pounds per gallon).

² Includes all boxed boneless beef, such as ground beef, roasts, steaks, loins, strips, rounds, trimmings, etc. Variety meats (edible offal), such as tongues, livers, hearts, kidneys, and other organs removed from slaughtered beef, are included as miscellaneous freezer stocks.

³ Includes all boxed primal beef cuts, bone-in.

⁴ Includes full ham, bone removed and individual muscles separated.

⁵ Includes pork tenderloins.

⁶ Includes spareribs and backribs.

⁷ Includes 42% regular trimmings, 72% special trimmings, boneless picnic meat, jowls, neckbone trimmings, blade, cheek, head, and shank meat, etc. Packaged bacon, sausage, and processed items, such as hot dogs and luncheon meats, are included in miscellaneous cooler or freezer stocks.

⁸ Includes ears, tails, feet, neckbones and snouts.

⁹ Includes tongues, kidneys, livers, stomachs, hearts, chitterlings, salivary glands, and other organs removed from slaughtered hogs.

¹⁰ Includes pork unable to be classified elsewhere in this report.

**Stocks in Cold Storage: By Commodity, Region,
and United States, October 31, 1999**

Commodity	New England	Middle Atlantic	East North Central	West North Central	South Atlantic
	<i>1,000 Pounds</i>	<i>1,000 Pounds</i>	<i>1,000 Pounds</i>	<i>1,000 Pounds</i>	<i>1,000 Pounds</i>
Total Fresh Apples	110,171	679,165	586,880	8,141	398,114
Nuts					
Shelled					
Peanuts		5	118	25	268,552
Pecans ¹		82			3,378
In-Shell					
Pecans ¹		4			4,383
Dairy Products					
Natural Cheese					
American, Total	22,685	41,401	222,287	94,155	667
Other Natural Cheese	602	9,947	87,498	45,291	1,111
Frozen Poultry					
Broilers (Whole)	80	300	1,571	771	16,910
Hens	1	85	1,454	1,669	3,280
Other Chicken	1,693	7,474	16,131	32,571	205,666
Total	1,774	7,859	19,156	35,011	225,856
Whole Turkeys	12,956	40,983	33,781	45,267	49,616
Other Turkey	285	12,665	14,936	55,122	45,499
Total	13,241	53,648	48,717	100,389	95,115
Ducks	51	143	4,464	97	25
Total	15,066	61,650	72,337	135,497	320,996
Frozen Fruit					
Apples	9	18,013	36,292	92	163
Blueberries	14,650	9,927	36,938	245	1,734
Cherries, Tart (RSP)	35	8,404	114,435	40	167
Cherries, Sweet		803	9,545	86	143
Peaches	41	2,693	5,495	55	706
Raspberries, Red	331	1,806	754	123	78
Strawberries, Total	127	3,250	5,009	2,435	1,709
Other Frozen Fruit	75,590	34,570	261,495	3,654	836

See footnotes at end of table.

--continued

**Stocks in Cold Storage: By Commodity, Region,
and United States, October 31, 1999 (continued)**

Commodity	East South Central	West South Central	Mountain	Pacific	US Total
	<i>1,000 Pounds</i>	<i>1,000 Pounds</i>	<i>1,000 Pounds</i>	<i>1,000 Pounds</i>	<i>1,000 Pounds</i>
Total Fresh Apples	233	1,303	58,375	4,322,870	6,165,252
Nuts					
Shelled					
Peanuts	47,179	113,412	176	435	429,902
Pecans ¹	131	8,641		90	12,322
In-Shell					
Pecans ¹	263	4,938			9,588
Dairy Products					
Natural Cheese					
American, Total		350	10,371	66,653	458,569
Other Natural Cheese	150	163	250	8,060	153,072
Frozen Poultry					
Broilers (Whole)	1,588	15,530	365	1,965	39,080
Hens	1,935	530	175	272	9,401
Other Chicken	170,275	288,017	3,223	46,968	772,018
Total	173,798	304,077	3,763	49,205	820,499
Whole Turkeys	5,294	43,835	18,349	67,804	317,885
Other Turkey	889	28,141	4,583	14,491	176,611
Total	6,183	71,976	22,932	82,295	494,496
Ducks	71	91	9	388	5,339
Total	180,052	376,144	26,704	131,888	1,320,334
Frozen Fruit					
Apples	156	3,016	159	12,744	70,644
Blueberries	81	877	264	17,129	81,845
Cherries, Tart (RSP)	55	1,051	2,852	9,181	136,220
Cherries, Sweet	4	147	624	2,636	13,988
Peaches	112	1,032	126	73,414	83,674
Raspberries, Red	89	628	11	61,808	65,628
Strawberries, Total	3,944	22,403	5,205	275,354	319,436
Other Frozen Fruit	259	10,706	590	99,521	487,221

See footnotes at end of table.

--continued

**Stocks in Cold Storage: By Commodity, Region,
and United States, October 31, 1999 (continued)**

Commodity	New England	Middle Atlantic	East North Central	West North Central	South Atlantic
	<i>1,000 Pounds</i>	<i>1,000 Pounds</i>	<i>1,000 Pounds</i>	<i>1,000 Pounds</i>	<i>1,000 Pounds</i>
Frozen Juice					
Orange Juice Conc. ²	12		1,988	562	1,135,110
Other Juice Concentrate	620	11,552	11,318	2,030	142,981
Frozen Vegetables ³					
Asparagus		398	6,792	65	429
Limas, Fordhook		541	377	212	1,828
Limas, Baby		4,386	1,996	905	19,433
Green Beans, Reg. Cut		32,437	45,451	2,277	13,552
Green Beans, Fr. Style		7,713	7,518	247	1,592
Broccoli, Spears		5,938	189	1,672	1,844
Broccoli, Chopped & Cut		5,328	8,974	4,017	6,997
Brussels Sprouts		795	205	316	578
Carrots, Diced		4,172	14,053	964	2,916
Carrots, Other		9,776	12,530	2,104	10,667
Cauliflower		2,262	2,534	913	1,310
Corn, Cut		45,065	32,986	23,991	15,391
Corn, Cob		16,088	4,712	34,466	11,553
Mixed Vegetables		2,539	3,556	1,335	6,534
Okra		1,691	187	1,391	19,770
Onion Rings		906	10,035	1,698	1,689
Onions, Other		3,364	4,920	327	3,541
Blackeye Peas		251	360	24	5,104
Green Peas		42,211	26,014	15,734	11,780
Peas & Carrots Mixed		562	382	46	675
Spinach		8,853	1,572	632	6,624
Squash, Summer/Zucchini		3,998	15,808	671	16,725
Southern Greens		2,773	18	15	9,323
Other Vegetables		31,946	36,869	14,532	43,480
Potatoes					
French Fries	29,914	36,442	62,365	86,743	27,149
Other Frozen	5,549	7,442	35,913	8,015	7,193
Meat					
Frozen Beef					
Boneless	5,564	36,450	34,556	61,187	18,500
Beef Cuts	1,309	1,136	5,912	8,155	1,985
Frozen Pork					
Ribs	315	1,131	14,815	19,831	5,945
Trimnings	132	2,522	9,686	24,277	7,316
Other	3,948	4,102	20,123	30,672	5,667
Other					
Veal	234	438	2,034	351	48
Lamb & Mutton	369	3,449	1,054	888	1,040

See footnotes at end of table.

--continued

**Stocks in Cold Storage: By Commodity, Region,
and United States, October 31, 1999 (continued)**

Commodity	East South Central	West South Central	Mountain	Pacific	US Total
	<i>1,000 Pounds</i>	<i>1,000 Pounds</i>	<i>1,000 Pounds</i>	<i>1,000 Pounds</i>	<i>1,000 Pounds</i>
Frozen Juice					
Orange Juice Concentrate	362	2,633	2,256	39,035	1,181,958
Other Juice Concentrate	2,363	13,851	493	159,076	344,284
Frozen Vegetables ³					
Asparagus		416	218	6,765	15,083
Limas, Fordhook		359	196	11,422	14,935
Limas, Baby		566	11,788	32,300	71,374
Green Beans, Reg. Cut		1,292	427	100,928	196,364
Green Beans, Fr. Style		174	68	24,317	41,629
Broccoli, Spears		13,883	1,377	13,719	38,622
Broccoli, Chopped & Cut		43,315	3,008	59,326	130,965
Brussels Sprouts		577	645	10,002	13,118
Carrots, Diced		1,685	216	39,261	63,267
Carrots, Other		7,826	499	165,977	209,379
Cauliflower		5,145	1,741	32,081	45,986
Corn, Cut		2,890	7,800	296,709	424,832
Corn, Cob		1,433	56	226,334	294,642
Mixed Vegetables		6,911	108	30,851	51,834
Okra		30,878		582	54,499
Onion Rings		2,275	1,147	732	18,482
Onions, Other		900	3,000	19,521	35,573
Blackeye Peas		868		162	6,769
Green Peas		4,020	17,811	227,235	344,805
Peas & Carrots Mixed		181	39	8,139	10,024
Spinach		7,713	9,681	49,349	84,424
Squash, Summer/Zucchini		6,379	206	20,074	63,861
Southern Greens		9,249		589	21,967
Other Vegetables		34,702	4,179	159,710	325,418
Potatoes					
French Fries	1,300	11,981	322,821	494,666	1,073,381
Other Frozen	735	11,042	54,918	103,643	234,450
Meat					
Frozen Beef					
Boneless ⁴	2,618	61,969	7,649	47,914	276,407
Beef Cuts ⁵	254	8,817	6,576	11,923	46,067
Frozen Pork					
Ribs ⁶	1,965	1,320	52	1,186	46,560
Trimmings ⁷	238	4,372	299	3,655	52,497
Other ⁸	9,213	13,499	203	3,593	91,020
Other					
Veal	22	64		1,134	4,325
Lamb & Mutton	1	457	565	1,387	9,210

¹ East North Central combined with South Atlantic. Mountain and West North Central combined with West South Central.

² Middle Atlantic combined with South Atlantic.

³ New England combined with Middle Atlantic. East South Central combined with South Atlantic.

⁴ Includes all boxed boneless beef, such as ground beef, roasts, steaks, loins, strips, rounds, trimmings, etc. Variety meats (edible offal), such as tongues, livers, hearts, kidneys, and other organs removed from slaughtered beef, are included as miscellaneous freezer stocks.

⁵ Includes all boxed primal beef cuts, bone-in.

⁶ Includes spareribs and backribs.

⁷ Includes 42% regular trimmings, 72% special trimmings, boneless picnic meat, jowls, neckbone trimmings, blade, cheek, head, and shank meat, etc. Packaged bacon, sausage, and processed items, such as hot dogs and luncheon meats, are included in miscellaneous cooler or freezer stocks.

⁸ Includes ears, tails, feet, neckbones and snouts.

**Stocks in Cold Storage: By Commodity, Region,
and United States, November 30, 1999**

Commodity	New England	Middle Atlantic	East North Central	West North Central	South Atlantic
	<i>1,000 Pounds</i>	<i>1,000 Pounds</i>	<i>1,000 Pounds</i>	<i>1,000 Pounds</i>	<i>1,000 Pounds</i>
Total Fresh Apples	93,970	679,825	586,966	5,097	328,709
Nuts					
Shelled					
Peanuts		4	59	26	265,022
Pecans ¹		41			3,973
In-Shell					
Pecans ¹		25			11,433
Dairy Products					
Natural Cheese					
American, Total	22,479	41,187	216,501	98,300	409
Other Natural Cheese	504	6,644	77,424	39,872	1,650
Frozen Poultry					
Broilers (Whole)	97	334	691	879	18,779
Hens	1	322	1,276	1,683	2,198
Other Chicken	1,810	7,096	16,295	33,416	193,775
Total	1,908	7,752	18,262	35,978	214,752
Whole Turkeys	3,158	6,312	8,211	15,583	15,649
Other Turkey	245	10,364	13,568	50,145	37,824
Total	3,403	16,676	21,779	65,728	53,473
Ducks	37	124	3,755	56	19
Total	5,348	24,552	43,796	101,762	268,244
Frozen Fruit					
Apples	29	18,503	34,532	93	250
Blueberries	12,347	8,378	31,922	211	1,258
Cherries, Tart (RSP)	33	7,673	105,799	45	154
Cherries, Sweet		786	9,166	78	120
Peaches	39	2,712	4,714	50	548
Raspberries, Red	330	1,790	765	112	79
Strawberries, Total	110	2,996	4,181	2,533	1,461
Other Frozen Fruit	76,618	35,898	260,760	2,273	749

See footnotes at end of table.

--continued

**Stocks in Cold Storage: By Commodity, Region,
and United States, November 30, 1999 (continued)**

Commodity	East South Central	West South Central	Mountain	Pacific	US Total
	<i>1,000 Pounds</i>	<i>1,000 Pounds</i>	<i>1,000 Pounds</i>	<i>1,000 Pounds</i>	<i>1,000 Pounds</i>
Total Fresh Apples	75	762	38,606	3,743,442	5,477,452
Nuts					
Shelled					
Peanuts	49,373	106,286	177	457	421,404
Pecans ¹	114	8,612		59	12,799
In-Shell					
Pecans ¹	2,406	22,395			36,259
Dairy Products					
Natural Cheese					
American, Total		835	10,266	65,037	455,014
Other Natural Cheese	146	144	324	7,111	133,819
Frozen Poultry					
Broilers (Whole)	1,524	19,058	333	2,466	44,161
Hens	1,606	532	145	346	8,109
Other Chicken	164,246	272,678	3,202	43,807	736,325
Total	167,376	292,268	3,680	46,619	788,595
Whole Turkeys	1,148	14,473	11,291	19,462	95,287
Other Turkey	924	23,556	4,160	13,402	154,188
Total	2,072	38,029	15,451	32,864	249,475
Ducks	29	60	8	397	4,485
Total	169,477	330,357	19,139	79,880	1,042,555
Frozen Fruit					
Apples	167	1,864	180	17,571	73,189
Blueberries	101	805	216	15,236	70,474
Cherries, Tart (RSP)	82	970	2,660	8,569	125,985
Cherries, Sweet	3	131	408	2,412	13,104
Peaches	133	794	125	69,338	78,453
Raspberries, Red	269	905	15	55,626	59,891
Strawberries, Total	3,935	20,385	4,929	274,604	315,134
Other Frozen Fruit	298	10,653	1,075	104,708	493,032

See footnotes at end of table.

--continued

**Stocks in Cold Storage: By Commodity, Region,
and United States, November 30, 1999 (continued)**

Commodity	New England	Middle Atlantic	East North Central	West North Central	South Atlantic
	<i>1,000 Pounds</i>	<i>1,000 Pounds</i>	<i>1,000 Pounds</i>	<i>1,000 Pounds</i>	<i>1,000 Pounds</i>
Frozen Juice					
Orange Juice Conc. ²	11		1,850	518	1,069,260
Other Juice Concentrate	554	17,209	11,165	1,629	138,498
Frozen Vegetables ³					
Asparagus		380	6,252	57	381
Limas, Fordhook		433	391	208	3,648
Limas, Baby		4,366	1,533	806	17,573
Green Beans, Reg. Cut		27,225	39,673	1,962	11,329
Green Beans, Fr. Style		6,720	6,848	219	1,649
Broccoli, Spears		5,243	196	1,584	1,504
Broccoli, Chopped & Cut		5,004	8,174	3,597	7,007
Brussels Sprouts		865	295	237	672
Carrots, Diced		5,286	22,482	944	3,771
Carrots, Other		10,478	12,990	2,147	10,864
Cauliflower		2,594	2,756	1,577	1,348
Corn, Cut		44,372	29,584	20,543	13,380
Corn, Cob		15,961	4,318	33,105	9,703
Mixed Vegetables		2,935	4,348	1,261	6,325
Okra		1,512	200	1,363	17,562
Onion Rings		923	10,453	1,658	1,596
Onions, Other		3,696	4,938	470	3,337
Blackeye Peas		236	358	18	4,620
Green Peas		38,438	22,245	13,087	10,607
Peas & Carrots Mixed		370	414	38	627
Spinach		8,139	1,584	609	6,328
Squash, Summer/Zucchini		3,743	13,100	561	16,937
Southern Greens		3,665	23	12	10,431
Other Vegetables		31,150	29,770	16,712	41,016
Potatoes					
French Fries	34,911	35,082	59,502	80,054	24,492
Other Frozen	5,241	9,275	36,810	7,091	7,618
Meat					
Frozen Beef					
Boneless ⁴	5,216	28,583	35,189	55,913	22,121
Beef Cuts ⁵	1,356	1,349	4,578	8,371	2,063
Frozen Pork					
Ribs ⁶	372	1,209	16,881	26,876	4,912
Trimmings ⁷	126	1,738	12,946	22,300	7,231
Other ⁸	3,942	3,578	20,205	29,192	4,942
Other					
Veal	218	512	1,885	357	41
Lamb & Mutton	362	2,597	904	1,127	1,037

See footnotes at end of table.

--continued

**Stocks in Cold Storage: By Commodity, Region,
and United States, November 30, 1999 (continued)**

Commodity	East South Central	West South Central	Mountain	Pacific	US Total
	<i>1,000 Pounds</i>	<i>1,000 Pounds</i>	<i>1,000 Pounds</i>	<i>1,000 Pounds</i>	<i>1,000 Pounds</i>
Frozen Juice					
Orange Juice Concentrate	417	2,522	2,186	37,744	1,114,508
Other Juice Concentrate	2,047	17,128	509	160,700	349,439
Frozen Vegetables ³					
Asparagus		488	198	6,231	13,987
Limas, Fordhook		355	197	10,191	15,423
Limas, Baby		489	11,156	28,721	64,644
Green Beans, Reg. Cut		1,283	377	89,513	171,362
Green Beans, Fr. Style		197	61	28,486	44,180
Broccoli, Spears		14,000	1,303	13,315	37,145
Broccoli, Chopped & Cut		39,280	2,842	58,358	124,262
Brussels Sprouts		496	483	16,836	19,884
Carrots, Diced		2,060	185	64,053	98,781
Carrots, Other		7,810	1,684	180,222	226,195
Cauliflower		8,866	1,797	36,861	55,799
Corn, Cut		1,750	7,386	251,929	368,944
Corn, Cob		1,511	32	208,528	273,158
Mixed Vegetables		7,652	91	29,872	52,484
Okra		29,860		588	51,085
Onion Rings		1,797	1,318	874	18,619
Onions, Other		976	3,267	24,223	40,907
Blackeye Peas		1,432		165	6,829
Green Peas		3,752	16,315	199,559	304,003
Peas & Carrots Mixed		150	38	7,799	9,436
Spinach		9,518	10,349	43,046	79,573
Squash, Summer/Zucchini		6,530	443	18,498	59,812
Southern Greens		13,824		667	28,622
Other Vegetables		32,358	4,388	150,937	306,331
Potatoes					
French Fries	1,405	10,427	319,693	455,953	1,021,519
Other Frozen	829	9,984	55,049	105,048	236,945
Meat					
Frozen Beef					
Boneless ⁴	2,945	58,580	6,442	45,109	260,098
Beef Cuts ⁵	252	5,764	5,971	11,921	41,625
Frozen Pork					
Ribs ⁶	2,200	1,398	106	2,131	56,085
Trimmings ⁷	270	3,921	297	4,490	53,319
Other ⁸	10,320	14,001	164	3,647	89,991
Other					
Veal	22	207		1,077	4,319
Lamb & Mutton	1	512	558	1,869	8,967

¹ East North Central combined with South Atlantic. Mountain and West North Central Combined with West South Central.

² Middle Atlantic combined with South Atlantic.

³ New England combined with Middle Atlantic. East South Central combined with South Atlantic.

⁴ Includes all boxed boneless beef, such as ground beef, roasts, steaks, loins, strips, rounds, trimmings, etc. Variety meats (edible offal), such as tongues, livers, hearts, kidneys, and other organs removed from slaughtered beef, are included as miscellaneous freezer stocks.

⁵ Includes all boxed primal beef cuts, bone-in.

⁶ Includes spareribs and backribs.

⁷ Includes 42% regular trimmings, 72% special trimmings, boneless picnic meat, jowls, neckbone trimmings, blade, cheek, head, and shank meat, etc. Packaged bacon, sausage, and processed items, such as hot dogs and luncheon meats, are included in miscellaneous cooler or freezer stocks.

⁸ Includes ears, tails, feet, neckbones and snouts.

**Public General Warehouses: Cold Storage Space Occupied
by Region and United States, November 1999**

Region	Cooler				Freezer			
	Usable Space	Usable Space Occupied			Usable Space	Usable Space Occupied		
		Nov 30 1999	Nov 30 1998	Oct 31 1999		Nov 30 1999	Nov 30 1998	Oct 31 1999
	<i>1,000 Cu Ft</i>	<i>Percent</i>	<i>Percent</i>	<i>Percent</i>	<i>1,000 Cu Ft</i>	<i>Percent</i>	<i>Percent</i>	<i>Percent</i>
New England	2,436	60	63	59	20,251	78	71	77
Middle Atlantic	35,142	80	74	75	119,134	83	82	79
E. North Central	47,610	55	49	50	174,169	71	60	60
W. North Central	42,538	48	36	38	133,205	60	50	55
South Atlantic	50,808	49	46	50	166,236	55	65	62
E. South Central	8,913	43	56	59	65,669	60	46	45
W. South Central	20,919	42	37	34	133,208	68	66	61
Mountain	5,946	89	71	69	54,219	69	67	61
Pacific	39,424	43	46	46	256,955	78	76	74
US	253,736	54	49	50	1,123,046	69	65	64

Cold Storage Regions



**Apples in Cold Storage: By State
and United States, November 1999**

State	All Warehouses		
	Nov 30, 1998	Oct 31, 1999	Nov 30, 1999
	<i>1,000 Pounds</i>	<i>1,000 Pounds</i>	<i>1,000 Pounds</i>
CA	171,350	324,043	205,676
MI	405,993	525,756	534,061
N ENG	44,954	110,171	93,970
NY	320,040	380,268	353,010
OH	16,860	32,941	26,451
OR	58,150	98,755	41,238
PA	218,106	297,822	326,196
VA	218,868	281,734	189,244
WA	4,132,318	3,900,073	3,496,527
WV	66,493	54,933	82,194
Other States	261,190	158,756	128,885
US	5,914,322	6,165,252	5,477,452

Survey Procedures: Questionnaires are mailed about the 24th of each month to all operators on the list of approximately 1,400 public and private cold storage warehouses. In addition, apple data are obtained from special surveys and other sources (State Departments of Agriculture, U.S. Apple Association, etc.). All survey data represent stocks as of the end of the month.

Data are collected from warehouses artificially cooled to a temperature of 50 degrees Fahrenheit or lower, and whose food products are normally stored for 30 days or more. All food items in these facilities are reported regardless of the number of days stored at the time of the report. Also included are specialized storage facilities meeting the 30 day requirement, such as fruit houses, dairy manufacturing plants, frozen fruit, fruit juice, and vegetable processors, and poultry and meat packing plants. Excluded are stocks in space maintained by wholesalers, jobbers, distributors, chain stores, locker plants containing individual lockers, meat packer branch houses, and frozen food processors whose entire inventories are turned over more than once a month.

Estimating Procedures: Data for reporting firms are added to estimates for non-reporting firms to obtain regional and National totals. Estimates for non-reporting firms are obtained by multiplying the previous month's figure by a percent change from the previous month. The percent change is calculated for each item from totals of the current and previous month summed from firms that reported both months.

Revision Policy: Data are revised the following month based on late reports or corrected data. Final figures are published in the annual summary in February of the following year.

Reliability: Reports are received from 900 firms each month which represent about 70 percent of the total capacity. Firms that are not on the list or firms who have never reported are not represented in the data. Monthly data can vary due to different firms reporting month to month. Survey data are also subject to non-sampling errors such as omissions and mistakes in reporting and in processing the data. While these errors cannot be measured directly, they are minimized by carefully reviewing all reported data for consistency and reasonableness.

The next "Cold Storage" report will be released at 3 p.m. ET on January 21, 2000.

The United States Department of Agriculture (USDA) prohibits discrimination in all its programs on the basis of race, color, national origin, gender, religion, age, disability, political beliefs, sexual orientation, and marital or family status. (Not all prohibited bases apply to all programs.) Persons with disabilities who require alternative means for communication of program information (braille, large print, audiotape, etc.) should contact the USDA's TARGET Center at 202-720-2600 (voice and TDD).

To file a complaint of discrimination, write USDA, Director, Office of Civil Rights, Room 326-W, Whitten Building, 14th and Independence Avenue, SW, Washington, D.C., 20250-9410, or call 202-720-5964 (voice or TDD). USDA is an equal opportunity provider and employer.

ACCESS TO REPORTS!!

For your convenience, there are several ways to obtain NASS reports, data products, and services:

INTERNET ACCESS

All NASS reports are available free of charge on the worldwide Internet. For access, connect to the Internet and go to the NASS Home Page at: <http://www.usda.gov/nass/>. Select "Today's Reports" or Publications and then Reports by Calendar or Publications and then Search, by Title or Subject.

E-MAIL SUBSCRIPTION

There are two options for subscribing via e-mail. All NASS reports are available by subscription free of charge direct to your e-mail address. 1) Starting with the NASS Home Page at <http://www.usda.gov/nass/>, click on **Publications**, then click on the **Subscribe by E-mail** button which takes you to the page describing e-mail delivery of reports. Finally, click on **Go to the Subscription Page** and follow the instructions. 2) If you do NOT have Internet access, send an e-mail message to: usda-reports@usda.mannlib.cornell.edu. In the body of the message type the word: **list**.

AUTOFAX ACCESS

NASSFax service is available for some reports from your fax machine. Please call 202-720-2000, using the handset attached to your fax. Respond to the voice prompts. Document 0411 is a list of available reports.

----- PRINTED REPORTS OR DATA PRODUCTS

CALL OUR TOLL-FREE ORDER DESK: 800-999-6779 (U.S. and Canada)
Other areas, please call 703-834-0125 FAX: 703-834-0110
(Visa, MasterCard, check, or money order acceptable for payment.)

ASSISTANCE

For **assistance** with general agricultural statistics or further information about NASS or its products or services, contact the **Agricultural Statistics Hotline** at **800-727-9540**, 7:30 a.m. to 4:00 p.m. ET, or e-mail: nass@nass.usda.gov.