



Cold Storage

Released January 21, 2000, by the National Agricultural Statistics Service (NASS), Agricultural Statistics Board, U.S. Department of Agriculture. For information on "Cold Storage" call Linda Simpson at (202) 720-8784, office hours 7:00 a.m. to 4:30 p.m. ET.

HIGHLIGHTS

Frozen food stocks in refrigerated warehouses on December 31, 1999 were greater than year earlier levels for chicken and butter. December 1999 stocks of chicken, at 803 million pounds, broke the previous record December high of 717 million pounds set in 1998. Cooler stocks of pecans and peanuts were also higher than a year earlier.

Total red meat supplies in freezers were slightly below November 1999 and 9 percent below December 1998. Frozen pork stocks were 2 percent below last month and 17 percent below last year. Stocks of pork bellies increased 54 percent from last month, but were 45 percent below the December 1998 stocks.

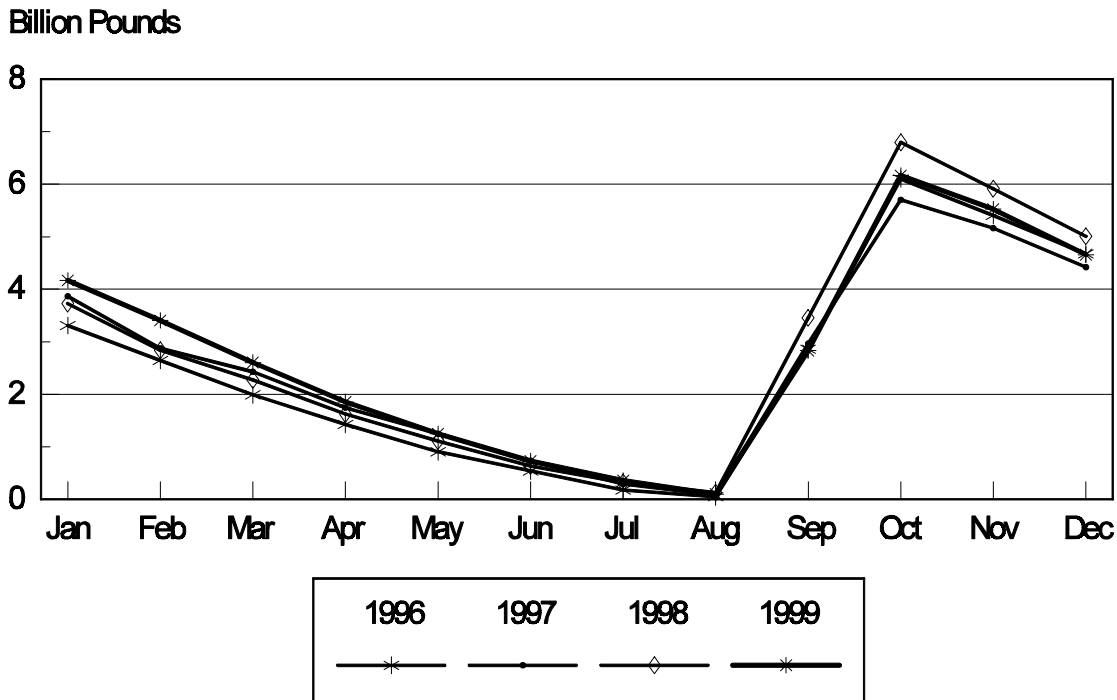
Total frozen poultry supplies were up 1 percent from last month and were 3 percent above last year's level. Total stocks of chicken were up 1 percent from last month and were 12 percent above December 1998. Total pounds of turkey in freezers decreased slightly from last month and were 17 percent below last year.

Public cooler occupancy was at 46 percent of capacity, down 8 points from last year. Public freezer occupancy at 61 percent was 5 percentage points below last year.

Table of Contents

	Page
Stocks in Cold Storage: By Commodity, United States, December 1999	3
Stocks in Cold Storage: By Commodity, Region, and United States, November 30, 1999	6
Stocks in Cold Storage: By Commodity, Region, and United States, December 31, 1999	10
Public General Warehouses: Cold Storage Space Occupied by Region and United States, December 1999	14
Apples in Cold Storage: By State and United States, December 1999	15
Survey and Estimating Procedures, Revision Policy and Reliability	16

Fresh Apples Cold Storage Stocks, 1996 -1999 United States



**Stocks in Cold Storage: By Commodity,
United States, December 1999**

Commodity	Stocks in All Warehouses			Percent of		Public Warehouse Stocks
	Dec 31, 1998	Nov 30, 1999	Dec 31, 1999	Dec 1998	Nov 1999	Dec 31, 1999
	<i>1,000 Pounds</i>	<i>1,000 Pounds</i>	<i>1,000 Pounds</i>	<i>Percent</i>	<i>Percent</i>	<i>1,000 Lbs</i>
Fresh Fruit						
Apples						
Regular Storage	1,039,507	1,509,008	862,253	83	57	
Controlled Atmosphere	3,968,949	4,014,881	3,795,746	96	95	
Total	5,008,456	5,523,889	4,657,999	93	84	7,633
Pears						
Bartlett	5,427	54,291	18,098	333	33	
Other Varieties	305,931	345,502	281,089	92	81	
Total	311,358	399,793	299,187	96	75	99
Nuts						
Shelled						
Peanuts	363,964	424,200	437,461	120	103	
Pecans	20,937	11,810	17,495	84	148	
Other Shelled	98,371	120,348	126,403	128	105	
Total	483,272	556,358	581,359	120	104	339,012
In-Shell						
Peanuts	17,187	21,770	19,637	114	90	
Pecans	90,637	36,259	133,873	148	369	
Other In-Shell	7,416	7,038	8,950	121	127	
Total	115,240	65,067	162,460	141	250	44,561
Dairy Products						
Butter, Total	25,910	30,184	25,965	100	86	17,105
(Government Owned)	4	313	223		71	
Natural Cheese						
American, Total	407,692	448,250	446,612	110	100	
(Government Owned)	120	24	18	15	75	
Swiss	11,838	9,075	8,346	71	92	
Other Natural Cheese	97,685	134,397	155,778	159	116	
Total	517,215	591,722	610,736	118	103	374,473
Eggs, Frozen						
Whites	1,247	494	501	40	101	
Yolks	1,028	762	722	70	95	
Whole & Mixed	8,107	6,716	8,145	100	121	
Unclassified	652	482	767	118	159	
Total	11,034	8,454	10,135	92	120	9,955
Frozen Poultry						
Chicken						
Broilers (Whole)	18,630	44,056	34,705	186	79	
Hens	6,256	8,117	7,763	124	96	
Other Chicken	692,463	743,066	760,454	110	102	
Total	717,349	795,239	802,922	112	101	
Turkey						
Whole Turkeys	105,819	95,093	91,104	86	96	
Other Turkey	198,490	157,178	161,063	81	102	
Total	304,309	252,271	252,167	83	100	
Ducks	3,757	4,497	3,760	100	84	
Total	1,025,415	1,052,007	1,058,849	103	101	982,162

**Stocks in Cold Storage: By Commodity,
United States, December 1999 (Continued)**

Commodity	Stocks in All Warehouses			Percent of		Public Warehouse Stocks
	Dec 31, 1998	Nov 30, 1999	Dec 31, 1999	Dec 1998	Nov 1999	Dec 31, 1999
	<i>1,000 Pounds</i>	<i>1,000 Pounds</i>	<i>1,000 Pounds</i>	<i>Percent</i>	<i>Percent</i>	<i>1,000 Lbs</i>
Frozen Fruit						
Apples	66,392	74,398	72,294	109	97	
Apricots	11,559	9,737	8,992	78	92	
Blackberries, Total	22,071	25,412	22,087	100	87	
IQF	12,394	16,207	13,774	111	85	
Pails and Tubs	2,607	1,844	1,866	72	101	
Barrels, 400 lbs net	5,555	5,611	4,872	88	87	
Concentrate	1,515	1,750	1,575	104	90	
Blueberries	67,443	69,999	59,017	88	84	
Boysenberries	4,506	5,528	5,133	114	93	
Cherries, Tart (RSP)	122,205	125,343	116,356	95	93	
Cherries, Tart (Juice)	3,225	2,249	2,029	63	90	
Cherries, Sweet	16,208	13,085	12,849	79	98	
Grapes	5,444	5,283	4,727	87	89	
Peaches	72,867	78,099	70,604	97	90	
Raspberries, Black	756	1,582	1,058	140	67	
Raspberries, Red, Total	40,174	60,312	55,833	139	93	
IQF	10,958	17,285	16,303	149	94	
Pails and Tubs	11,031	15,655	14,343	130	92	
Barrels, 400 lbs net	13,918	24,372	22,250	160	91	
Concentrate	4,267	3,000	2,937	69	98	
Strawberries, Total	201,442	314,323	277,703	138	88	
Other Frozen Fruit	574,325	492,170	462,790	81	94	
Total	1,208,617	1,277,520	1,171,472	97	92	863,523
Frozen Juice						
Orange Juice Conc. ¹	1,791,913	1,102,698	1,331,183	74	121	
(Gallon Equivalent)	181,074	111,429	134,517			
Other Juice Concentrate	405,954	346,225	331,041	82	96	
Total	2,197,867	1,448,923	1,662,224	76	115	197,522
Frozen Vegetables						
Asparagus	6,162	13,962	12,076	196	86	
Limas, Fordhook	12,049	15,413	15,068	125	98	
Limas, Baby	63,420	64,507	56,711	89	88	
Green Beans, Reg. Cut	172,372	172,979	150,427	87	87	
Green Beans, Fr. Style	41,028	38,146	36,151	88	95	
Broccoli, Spears	24,442	36,182	34,356	141	95	
Broccoli, Chopped & Cut	89,310	124,436	123,035	138	99	
Brussels Sprouts	18,745	20,380	25,646	137	126	
Carrots, Diced	73,555	99,385	94,577	129	95	
Carrots, Other	183,068	226,603	213,586	117	94	
Cauliflower	50,298	56,505	57,845	115	102	
Corn, Cut	403,737	370,531	329,087	82	89	
Corn, Cob	269,578	286,753	256,216	95	89	
Mixed Vegetables	53,020	52,358	51,493	97	98	
Okra	46,567	50,480	39,868	86	79	
Onion Rings	15,752	18,619	17,026	108	91	
Onions, Other	24,596	41,677	41,250	168	99	
Blackeye Peas	8,039	6,851	6,524	81	95	
Green Peas	277,858	304,127	275,371	99	91	
Peas & Carrots Mixed	10,285	9,401	11,310	110	120	
Spinach	69,232	85,493	73,780	107	86	
Squash, Summer/Zucchini	70,272	60,301	58,498	83	97	
Southern Greens	32,765	30,401	27,336	83	90	
Other Vegetables	301,595	298,300	272,162	90	91	
Total	2,317,745	2,483,790	2,279,399	98	92	1,500,126

See footnotes at end of table.

--continued

**Stocks in Cold Storage: By Commodity,
United States, December 1999 (Continued)**

Commodity	Stocks in All Warehouses			Percent of		Public Warehouse Stocks
	Dec 31, 1998	Nov 30, 1999	Dec 31, 1999	Dec 1998	Nov 1999	Dec 31, 1999
	<i>1,000 Pounds</i>	<i>1,000 Pounds</i>	<i>1,000 Pounds</i>	<i>Percent</i>	<i>Percent</i>	<i>1,000 Lbs</i>
Potatoes						
French Fries	897,256	1,019,535	931,735	104	91	
Other Frozen	254,038	234,996	220,262	87	94	
Total	1,151,294	1,254,531	1,151,997	100	92	831,606
Meat						
Frozen Beef						
Boneless ²	267,339	267,198	269,349	101	101	
Beef Cuts ³	29,084	41,738	44,613	153	107	
Total	296,423	308,936	313,962	106	102	310,255
(Government Owned)	3,554	3,915	6,350	179	162	
Frozen Pork						
Picnics, Bone-in	11,960	13,827	6,785	57	49	
Hams, Total	63,684	82,820	61,031	96	74	56,538
Bone-in	30,662	48,975	33,040	108	67	32,623
Boneless ⁴	33,022	33,845	27,991	85	83	23,915
Bellies	72,657	26,170	40,301	55	154	
Loins, Total	27,643	20,607	26,996	98	131	22,879
Bone-in	18,792	11,090	15,197	81	137	
Boneless ⁵	8,851	9,517	11,799	133	124	
Ribs ⁶	75,393	55,100	66,717	88	121	
Butts	15,882	11,338	10,482	66	92	
Trimnings ⁷	73,201	52,459	55,204	75	105	
Other ⁸	88,577	95,334	91,849	104	96	
Variety Meats ⁹	58,867	51,258	39,764	68	78	
Unclassified ¹⁰	15,645	13,622	16,743	107	123	
Total	503,509	422,535	415,872	83	98	354,898
(Government Owned)	1,830	5,771	5,473	299	95	
Other						
Veal	5,407	4,361	5,122	95	117	
Lamb & Mutton	11,721	9,446	8,749	75	93	
Total	17,128	13,807	13,871	81	100	13,696
Canned						
Canned Hams	3,378	4,717	4,568	135	97	
Other Canned Meat	610	461	370	61	80	
Total	3,988	5,178	4,938	124	95	3,182
Total	821,048	750,456	748,643	91	100	682,031
Miscellaneous						
Cooler	816,023	994,203	855,299	105	86	518,028
Freezer	2,020,527	1,867,437	1,972,906	98	106	1,907,520
Total	2,836,550	2,861,640	2,828,205	100	99	2,425,548
Commodities						
Stored in Coolers	7,255,552	8,136,210	7,171,978	99	88	1,286,988
Stored in Freezers	10,775,469	10,168,124	10,076,652	94	99	6,988,368
Total	18,031,021	18,304,334	17,248,630	96	94	8,275,356

¹ Adjusted to 42.0 degrees Brix equivalent (9.896 pounds per gallon).

² Includes all boxed boneless beef, such as ground beef, roasts, steaks, loins, strips, rounds, trimmings, etc. Variety meats (edible offal), such as tongues, livers, hearts, kidneys, and other organs removed from slaughtered beef, are included as miscellaneous freezer stocks.

³ Includes all boxed primal beef cuts, bone-in.

⁴ Includes full ham, bone removed and individual muscles separated.

⁵ Includes pork tenderloins.

⁶ Includes spareribs and backribs.

⁷ Includes 42% regular trimmings, 72% special trimmings, boneless picnic meat, jowls, neckbone trimmings, blade, cheek, head, and shank meat, etc. Packaged bacon, sausage, and processed items, such as hot dogs and luncheon meats, are included in miscellaneous cooler or freezer stocks.

⁸ Includes ears, tails, feet, neckbones and snouts.

⁹ Includes tongues, kidneys, livers, stomachs, hearts, chitterlings, salivary glands, and other organs removed from slaughtered hogs.

¹⁰ Includes pork unable to be classified elsewhere in this report.

**Stocks in Cold Storage: By Commodity, Region,
and United States, November 30, 1999**

Commodity	New England	Middle Atlantic	East North Central	West North Central	South Atlantic
	<i>1,000 Pounds</i>	<i>1,000 Pounds</i>	<i>1,000 Pounds</i>	<i>1,000 Pounds</i>	<i>1,000 Pounds</i>
Total Fresh Apples	93,970	679,825	586,981	5,097	375,132
Nuts					
Shelled					
Peanuts		34	59	26	264,116
Pecans ¹		41			3,983
In-Shell					
Pecans ¹		25			11,433
Dairy Products					
Natural Cheese					
American, Total	20,241	40,920	218,856	99,162	376
Other Natural Cheese	519	6,684	77,357	39,926	1,650
Frozen Poultry					
Broilers (Whole)	97	301	686	820	18,779
Hens	1	330	1,276	1,683	2,198
Other Chicken	1,935	7,446	16,290	33,314	193,531
Total	2,033	8,077	18,252	35,817	214,508
Whole Turkeys	2,586	6,539	8,211	15,821	15,822
Other Turkey	340	10,428	13,568	51,323	39,476
Total	2,926	16,967	21,779	67,144	55,298
Ducks	37	143	3,755	56	19
Total	4,996	25,187	43,786	103,017	269,825
Frozen Fruit					
Apples	29	20,553	34,532	94	307
Blueberries	12,564	8,372	31,908	211	1,205
Cherries, Tart (RSP)	41	7,576	105,799	46	29
Cherries, Sweet		774	9,161	78	120
Peaches	39	2,699	4,714	51	498
Raspberries, Red	330	1,787	765	113	150
Strawberries, Total	153	3,042	4,181	2,579	1,431
Other Frozen Fruit	76,639	35,895	260,760	2,278	781

See footnotes at end of table.

--continued

**Stocks in Cold Storage: By Commodity, Region,
and United States, November 30, 1999 (continued)**

Commodity	East South Central	West South Central	Mountain	Pacific	US Total
	<i>1,000 Pounds</i>	<i>1,000 Pounds</i>	<i>1,000 Pounds</i>	<i>1,000 Pounds</i>	<i>1,000 Pounds</i>
Total Fresh Apples	75	762	38,606	3,743,441	5,523,889
Nuts					
Shelled					
Peanuts	49,373	110,025	177	390	424,200
Pecans ¹	114	7,612		60	11,810
In-Shell					
Pecans ¹	2,406	22,395			36,259
Dairy Products					
Natural Cheese					
American, Total		835	11,975	55,885	448,250
Other Natural Cheese	146	144	349	7,622	134,397
Frozen Poultry					
Broilers (Whole)	1,524	19,058	325	2,466	44,056
Hens	1,606	532	145	346	8,117
Other Chicken	164,246	272,678	2,964	50,662	743,066
Total	167,376	292,268	3,434	53,474	795,239
Whole Turkeys	1,148	14,473	11,284	19,209	95,093
Other Turkey	924	23,556	4,167	13,396	157,178
Total	2,072	38,029	15,451	32,605	252,271
Ducks	29	60	1	397	4,497
Total	169,477	330,357	18,886	86,476	1,052,007
Frozen Fruit					
Apples	167	997	147	17,572	74,398
Blueberries	101	646	228	14,764	69,999
Cherries, Tart (RSP)	82	466	2,715	8,589	125,343
Cherries, Sweet	3	131	408	2,410	13,085
Peaches	133	463	164	69,338	78,099
Raspberries, Red	269	790	13	56,095	60,312
Strawberries, Total	3,935	20,264	4,876	273,862	314,323
Other Frozen Fruit	298	10,270	1,075	104,174	492,170

See footnotes at end of table.

--continued

**Stocks in Cold Storage: By Commodity, Region,
and United States, November 30, 1999 (continued)**

Commodity	New England	Middle Atlantic	East North Central	West North Central	South Atlantic
	<i>1,000 Pounds</i>	<i>1,000 Pounds</i>	<i>1,000 Pounds</i>	<i>1,000 Pounds</i>	<i>1,000 Pounds</i>
Frozen Juice					
Orange Juice Conc. ²	15		1,861	518	1,057,719
Other Juice Concentrate	524	17,135	11,165	1,631	134,733
Frozen Vegetables ³					
Asparagus		357	6,250	57	381
Limas, Fordhook		424	391	208	3,648
Limas, Baby		5,385	1,533	805	17,573
Green Beans, Reg. Cut		27,649	40,884	1,963	11,329
Green Beans, Fr. Style		6,830	6,853	218	1,649
Broccoli, Spears		5,541	198	1,582	1,504
Broccoli, Chopped & Cut		5,728	8,174	3,598	7,007
Brussels Sprouts		1,361	295	237	672
Carrots, Diced		5,951	22,508	941	3,771
Carrots, Other		10,396	13,028	2,141	10,864
Cauliflower		2,512	2,756	1,575	1,348
Corn, Cut		42,948	32,124	20,545	13,380
Corn, Cob		15,903	16,271	33,105	9,703
Mixed Vegetables		2,838	4,278	1,269	6,325
Okra		1,449	200	1,363	17,562
Onion Rings		923	10,453	1,658	1,596
Onions, Other		3,935	4,938	470	3,337
Blackeye Peas		258	358	18	4,620
Green Peas		37,337	23,580	13,083	10,607
Peas & Carrots Mixed		356	414	37	627
Spinach		8,312	1,584	617	6,328
Squash, Summer/Zucchini		4,381	13,100	561	16,928
Southern Greens		5,444	23	12	10,431
Other Vegetables		30,818	29,795	16,709	41,022
Potatoes					
French Fries	34,757	35,123	59,493	88,322	24,492
Other Frozen	5,222	9,469	36,820	7,812	7,618
Meat					
Frozen Beef					
Boneless	6,367	28,634	35,321	55,850	22,119
Beef Cuts	1,356	1,355	4,530	8,505	2,065
Frozen Pork					
Ribs	372	1,086	16,659	26,876	4,277
Trimming	126	1,729	13,105	22,300	7,024
Other	3,797	3,517	20,208	29,191	6,682
Other					
Veal	218	534	1,885	357	41
Lamb & Mutton	362	2,639	904	1,127	1,037

See footnotes at end of table.

--continued

**Stocks in Cold Storage: By Commodity, Region,
and United States, November 30, 1999 (continued)**

Commodity	East South Central	West South Central	Mountain	Pacific	US Total
	<i>1,000 Pounds</i>	<i>1,000 Pounds</i>	<i>1,000 Pounds</i>	<i>1,000 Pounds</i>	<i>1,000 Pounds</i>
Frozen Juice					
Orange Juice Concentrate	417	2,522	1,902	37,744	1,102,698
Other Juice Concentrate	2,047	17,128	482	161,380	346,225
Frozen Vegetables ³					
Asparagus		488	198	6,231	13,962
Limas, Fordhook		355	196	10,191	15,413
Limas, Baby		489	10,056	28,666	64,507
Green Beans, Reg. Cut		1,283	251	89,620	172,979
Green Beans, Fr. Style		197	84	22,315	38,146
Broccoli, Spears		14,000	42	13,315	36,182
Broccoli, Chopped & Cut		39,280	2,842	57,807	124,436
Brussels Sprouts		496	483	16,836	20,380
Carrots, Diced		2,060	222	63,932	99,385
Carrots, Other		7,810	1,804	180,560	226,603
Cauliflower		8,819	1,790	37,705	56,505
Corn, Cut		1,750	8,257	251,527	370,531
Corn, Cob		1,511	32	210,228	286,753
Mixed Vegetables		7,652	102	29,894	52,358
Okra		29,320		586	50,480
Onion Rings		1,797	1,318	874	18,619
Onions, Other		976	3,250	24,771	41,677
Blackeye Peas		1,432		165	6,851
Green Peas		3,752	16,376	199,392	304,127
Peas & Carrots Mixed		150	18	7,799	9,401
Spinach		9,518	10,045	49,089	85,493
Squash, Summer/Zucchini		6,401	443	18,487	60,301
Southern Greens		13,824		667	30,401
Other Vegetables		24,961	4,163	150,832	298,300
Potatoes					
French Fries	1,405	10,427	320,538	444,978	1,019,535
Other Frozen	829	9,984	55,049	102,193	234,996
Meat					
Frozen Beef					
Boneless ⁴	2,945	58,580	6,282	51,100	267,198
Beef Cuts ⁵	252	5,764	5,990	11,921	41,738
Frozen Pork					
Ribs ⁶	2,200	1,398	101	2,131	55,100
Trimmings ⁷	270	3,921	282	3,702	52,459
Other ⁸	10,320	14,001	145	7,473	95,334
Other					
Veal	22	207	20	1,077	4,361
Lamb & Mutton	1	512	565	2,299	9,446

¹ East North Central combined with South Atlantic. Mountain and West North Central combined with West South Central.

² Middle Atlantic combined with South Atlantic.

³ New England combined with Middle Atlantic. East South Central combined with South Atlantic.

⁴ Includes all boxed boneless beef, such as ground beef, roasts, steaks, loins, strips, rounds, trimmings, etc. Variety meats (edible offal), such as tongues, livers, hearts, kidneys, and other organs removed from slaughtered beef, are included as miscellaneous freezer stocks.

⁵ Includes all boxed primal beef cuts, bone-in.

⁶ Includes spareribs and backribs.

⁷ Includes 42% regular trimmings, 72% special trimmings, boneless picnic meat, jowls, neckbone trimmings, blade, cheek, head, and shank meat, etc. Packaged bacon, sausage, and processed items, such as hot dogs and luncheon meats, are included in miscellaneous cooler or freezer stocks.

⁸ Includes ears, tails, feet, neckbones and snouts.

**Stocks in Cold Storage: By Commodity, Region,
and United States, December 31, 1999**

Commodity	New England	Middle Atlantic	East North Central	West North Central	South Atlantic
	<i>1,000 Pounds</i>	<i>1,000 Pounds</i>	<i>1,000 Pounds</i>	<i>1,000 Pounds</i>	<i>1,000 Pounds</i>
Total Fresh Apples	74,232	539,032	427,247	2,726	282,773
Nuts					
Shelled					
Peanuts		38	189	27	254,826
Pecans ¹		76			5,267
In-Shell					
Pecans ¹		4			30,062
Dairy Products					
Natural Cheese					
American, Total	19,594	39,402	218,345	97,261	784
Other Natural Cheese	577	7,075	81,044	51,391	2,603
Frozen Poultry					
Broilers (Whole)	107	338	720	858	12,380
Hens	1	322	1,288	1,760	2,019
Other Chicken	1,926	6,990	17,758	31,473	210,381
Total	2,034	7,650	19,766	34,091	224,780
Whole Turkeys	1,721	5,947	5,507	18,210	14,915
Other Turkey	299	9,931	13,484	52,390	43,889
Total	2,020	15,878	18,991	70,600	58,804
Ducks	31	176	3,166	18	17
Total	4,085	23,704	41,923	104,709	283,601
Frozen Fruit					
Apples	22	22,890	34,312	108	270
Blueberries	10,632	7,155	26,805	226	1,288
Cherries, Tart (RSP)	38	6,907	98,574	64	27
Cherries, Sweet		739	9,234	62	95
Peaches	35	2,597	4,564	47	316
Raspberries, Red	362	1,804	870	135	71
Strawberries, Total	115	3,213	4,761	2,449	1,266
Other Frozen Fruit	72,206	33,484	244,634	1,314	811

See footnotes at end of table.

--continued

**Stocks in Cold Storage: By Commodity, Region,
and United States, December 31, 1999 (continued)**

Commodity	East South Central	West South Central	Mountain	Pacific	US Total
	<i>1,000 Pounds</i>	<i>1,000 Pounds</i>	<i>1,000 Pounds</i>	<i>1,000 Pounds</i>	<i>1,000 Pounds</i>
Total Fresh Apples	21	1,344	29,584	3,301,040	4,657,999
Nuts					
Shelled					
Peanuts	48,619	133,293	167	302	437,461
Pecans ¹	767	11,309		76	17,495
In-Shell					
Pecans ¹	3,858	99,949			133,873
Dairy Products					
Natural Cheese					
American, Total		302	10,990	59,934	446,612
Other Natural Cheese	150	179	272	12,487	155,778
Frozen Poultry					
Broilers (Whole)	1,604	16,712	405	1,581	34,705
Hens	1,090	452	145	686	7,763
Other Chicken	160,018	272,620	3,358	55,930	760,454
Total	162,712	289,784	3,908	58,197	802,922
Whole Turkeys	264	15,230	12,701	16,609	91,104
Other Turkey	1,224	24,486	3,206	12,154	161,063
Total	1,488	39,716	15,907	28,763	252,167
Ducks	1	6	1	344	3,760
Total	164,201	329,506	19,816	87,304	1,058,849
Frozen Fruit					
Apples	142	430	195	13,925	72,294
Blueberries	33	461	193	12,224	59,017
Cherries, Tart (RSP)	66	163	2,524	7,993	116,356
Cherries, Sweet	4	121	541	2,053	12,849
Peaches	127	674	190	62,054	70,604
Raspberries, Red	150	537	24	51,880	55,833
Strawberries, Total	3,408	17,235	4,147	241,109	277,703
Other Frozen Fruit	807	10,086	1,788	97,660	462,790

See footnotes at end of table.

--continued

**Stocks in Cold Storage: By Commodity, Region,
and United States, December 31, 1999 (continued)**

Commodity	New England	Middle Atlantic	East North Central	West North Central	South Atlantic
	<i>1,000 Pounds</i>	<i>1,000 Pounds</i>	<i>1,000 Pounds</i>	<i>1,000 Pounds</i>	<i>1,000 Pounds</i>
Frozen Juice					
Orange Juice Conc. ²	77		2,192	502	1,279,105
Other Juice Concentrate	268	16,418	11,483	1,614	136,105
Frozen Vegetables ³					
Asparagus		486	5,544	46	306
Limas, Fordhook		546	424	175	4,079
Limas, Baby		4,868	1,318	726	15,120
Green Beans, Reg. Cut		24,410	35,234	1,675	9,650
Green Beans, Fr. Style		6,459	6,296	194	1,550
Broccoli, Spears		5,247	359	1,465	2,560
Broccoli, Chopped & Cut		5,347	9,236	3,906	7,025
Brussels Sprouts		2,090	365	543	704
Carrots, Diced		5,241	21,593	880	5,630
Carrots, Other		10,889	12,007	2,023	12,277
Cauliflower		2,528	2,929	2,175	1,372
Corn, Cut		34,388	27,967	17,524	11,832
Corn, Cob		12,492	15,545	29,254	9,564
Mixed Vegetables		2,798	3,822	1,546	6,451
Okra		1,466	172	1,022	11,539
Onion Rings		984	9,919	1,725	1,127
Onions, Other		3,497	4,546	347	2,745
Blackeye Peas		164	325	6	4,502
Green Peas		33,566	23,015	13,637	8,813
Peas & Carrots Mixed		524	421	33	594
Spinach		9,669	1,303	495	5,531
Squash, Summer/Zucchini		4,056	12,707	528	15,886
Southern Greens		2,882	21	9	9,889
Other Vegetables		34,183	24,879	14,725	38,242
Potatoes					
French Fries	35,443	31,270	57,372	85,344	18,475
Other Frozen	5,277	10,869	33,566	7,294	5,155
Meat					
Frozen Beef					
Boneless ⁴	7,561	31,028	35,048	54,399	20,946
Beef Cuts ⁵	1,068	1,573	4,598	8,546	2,151
Frozen Pork					
Ribs ⁶	458	1,178	18,796	33,634	5,364
Trimmings ⁷	117	1,515	14,404	27,235	6,961
Other ⁸	3,795	3,470	20,147	27,915	6,430
Other					
Veal	216	521	2,056	497	34
Lamb & Mutton	348	2,234	1,041	232	483

See footnotes at end of table.

--continued

**Stocks in Cold Storage: By Commodity, Region,
and United States, December 31, 1999 (continued)**

Commodity	East South Central	West South Central	Mountain	Pacific	US Total
	<i>1,000 Pounds</i>	<i>1,000 Pounds</i>	<i>1,000 Pounds</i>	<i>1,000 Pounds</i>	<i>1,000 Pounds</i>
Frozen Juice					
Orange Juice Concentrate	451	2,491	2,233	44,132	1,331,183
Other Juice Concentrate	1,332	15,595	481	147,745	331,041
Frozen Vegetables ³					
Asparagus		493	168	5,033	12,076
Limas, Fordhook		323	186	9,335	15,068
Limas, Baby		471	9,109	25,099	56,711
Green Beans, Reg. Cut		1,212	189	78,057	150,427
Green Beans, Fr. Style		360	102	21,190	36,151
Broccoli, Spears		13,495	62	11,168	34,356
Broccoli, Chopped & Cut		35,539	2,679	59,303	123,035
Brussels Sprouts		691	280	20,973	25,646
Carrots, Diced		1,906	234	59,093	94,577
Carrots, Other		7,851	1,623	166,916	213,586
Cauliflower		11,909	1,658	35,274	57,845
Corn, Cut		2,993	7,793	226,590	329,087
Corn, Cob		1,600	39	187,722	256,216
Mixed Vegetables		7,075	126	29,675	51,493
Okra		25,093		576	39,868
Onion Rings		1,557	1,281	433	17,026
Onions, Other		731	3,363	26,021	41,250
Blackeye Peas		1,344		183	6,524
Green Peas		3,660	15,130	177,550	275,371
Peas & Carrots Mixed		148	6	9,584	11,310
Spinach		10,845	10,946	34,991	73,780
Squash, Summer/Zucchini		6,925	645	17,751	58,498
Southern Greens		13,829		706	27,336
Other Vegetables		27,846	3,794	128,493	272,162
Potatoes					
French Fries	1,275	6,901	253,158	442,497	931,735
Other Frozen	715	7,437	54,436	95,513	220,262
Meat					
Frozen Beef					
Boneless ⁴	2,988	51,572	5,898	59,909	269,349
Beef Cuts ⁵	277	8,334	6,894	11,172	44,613
Frozen Pork					
Ribs ⁶	2,760	1,497	65	2,965	66,717
Trimmings ⁷	255	2,701	260	1,756	55,204
Other ⁸	10,258	13,120	208	6,506	91,849
Other					
Veal	2	229	20	1,547	5,122
Lamb & Mutton		535	680	3,196	8,749

¹ East North Central combined with South Atlantic. Mountain and West North Central Combined with West South Central.

² Middle Atlantic combined with South Atlantic.

³ New England combined with Middle Atlantic. East South Central combined with South Atlantic.

⁴ Includes all boxed boneless beef, such as ground beef, roasts, steaks, loins, strips, rounds, trimmings, etc. Variety meats (edible offal), such as tongues, livers, hearts, kidneys, and other organs removed from slaughtered beef, are included as miscellaneous freezer stocks.

⁵ Includes all boxed primal beef cuts, bone-in.

⁶ Includes spareribs and backribs.

⁷ Includes 42% regular trimmings, 72% special trimmings, boneless picnic meat, jowls, neckbone trimmings, blade, cheek, head, and shank meat, etc. Packaged bacon, sausage, and processed items, such as hot dogs and luncheon meats, are included in miscellaneous cooler or freezer stocks.

⁸ Includes ears, tails, feet, neckbones and snouts.

**Public General Warehouses: Cold Storage Space Occupied
by Region and United States, December 1999**

Region	Cooler				Freezer			
	Usable Space	Usable Space Occupied			Usable Space	Usable Space Occupied		
		Dec 31 1999	Dec 31 1998	Nov 30 1999		Dec 31 1999	Dec 31 1998	Nov 30 1999
	<i>1,000 Cu Ft</i>	<i>Percent</i>	<i>Percent</i>	<i>Percent</i>	<i>1,000 Cu Ft</i>	<i>Percent</i>	<i>Percent</i>	<i>Percent</i>
New England	2,436	62	55	58	20,251	80	77	72
Middle Atlantic	35,143	80	74	70	119,134	80	79	80
E. North Central	47,609	54	50	54	174,169	64	60	56
W. North Central	42,562	47	29	32	133,206	61	48	47
South Atlantic	50,793	48	47	45	166,236	54	62	60
E. South Central	8,914	46	54	52	65,670	59	46	48
W. South Central	20,919	43	32	37	133,284	67	64	62
Mountain	5,946	90	67	71	51,999	66	63	58
Pacific	40,651	45	35	31	256,955	73	76	71
US	254,973	54	46	46	1,120,904	66	64	61

Cold Storage Regions



**Apples in Cold Storage: By State
and United States, December 1999**

State	All Warehouses		
	Dec 31, 1998	Nov 30, 1999	Dec 31, 1999
	<i>1,000 Pounds</i>	<i>1,000 Pounds</i>	<i>1,000 Pounds</i>
CA	132,843	205,676	118,448
MI	347,729	534,061	387,495
N ENG	33,640	93,970	74,232
NY	281,232	353,010	334,950
OH	12,420	26,466	20,535
OR	39,210	41,238	32,951
PA	185,094	326,196	203,571
VA	164,657	235,783	163,288
WA	3,597,825	3,496,527	3,149,642
WV	53,965	82,078	76,458
Other States	159,841	128,884	96,429
US	5,008,456	5,523,889	4,657,999

Survey Procedures: Questionnaires are mailed about the 24th of each month to all operators on the list of approximately 1,400 public and private cold storage warehouses. In addition, apple data are obtained from special surveys and other sources (State Departments of Agriculture, U.S. Apple Association, etc.). All survey data represent stocks as of the end of the month.

Data are collected from warehouses artificially cooled to a temperature of 50 degrees Fahrenheit or lower, and whose food products are normally stored for 30 days or more. All food items in these facilities are reported regardless of the number of days stored at the time of the report. Also included are specialized storage facilities meeting the 30 day requirement, such as fruit houses, dairy manufacturing plants, frozen fruit, fruit juice, and vegetable processors, and poultry and meat packing plants. Excluded are stocks in space maintained by wholesalers, jobbers, distributors, chain stores, locker plants containing individual lockers, meat packer branch houses, and frozen food processors whose entire inventories are turned over more than once a month.

Estimating Procedures: Data for reporting firms are added to estimates for non-reporting firms to obtain regional and National totals. Estimates for non-reporting firms are obtained by multiplying the previous month's figure by a percent change from the previous month. The percent change is calculated for each item from totals of the current and previous month summed from firms that reported both months.

Revision Policy: Data are revised the following month based on late reports or corrected data. Final figures are published in the annual summary in February of the following year.

Reliability: Reports are received from 900 firms each month which represent about 70 percent of the total capacity. Firms that are not on the list or firms who have never reported are not represented in the data. Monthly data can vary due to different firms reporting month to month. Survey data are also subject to non-sampling errors such as omissions and mistakes in reporting and in processing the data. While these errors cannot be measured directly, they are minimized by carefully reviewing all reported data for consistency and reasonableness.

The next "Cold Storage" report will be released at 3 p.m. ET on February 18, 2000.

The United States Department of Agriculture (USDA) prohibits discrimination in all its programs on the basis of race, color, national origin, gender, religion, age, disability, political beliefs, sexual orientation, and marital or family status. (Not all prohibited bases apply to all programs.) Persons with disabilities who require alternative means for communication of program information (braille, large print, audiotape, etc.) should contact the USDA's TARGET Center at 202-720-2600 (voice and TDD).

To file a complaint of discrimination, write USDA, Director, Office of Civil Rights, Room 326-W, Whitten Building, 14th and Independence Avenue, SW, Washington, D.C., 20250-9410, or call 202-720-5964 (voice or TDD). USDA is an equal opportunity provider and employer.

ACCESS TO REPORTS!!

For your convenience, there are several ways to obtain NASS reports, data products, and services:

INTERNET ACCESS

All NASS reports are available free of charge on the worldwide Internet. For access, connect to the Internet and go to the NASS Home Page at: <http://www.usda.gov/nass/>. Select "Today's Reports" or Publications and then Reports by Calendar or Publications and then Search, by Title or Subject.

E-MAIL SUBSCRIPTION

There are two options for subscribing via e-mail. All NASS reports are available by subscription free of charge direct to your e-mail address. 1) Starting with the NASS Home Page at <http://www.usda.gov/nass/>, click on **Publications**, then click on the **Subscribe by E-mail** button which takes you to the page describing e-mail delivery of reports. Finally, click on **Go to the Subscription Page** and follow the instructions. 2) If you do NOT have Internet access, send an e-mail message to: usda-reports@usda.mannlib.cornell.edu. In the body of the message type the word: **list**.

AUTOFAX ACCESS

NASSFax service is available for some reports from your fax machine. Please call 202-720-2000, using the handset attached to your fax. Respond to the voice prompts. Document 0411 is a list of available reports.

PRINTED REPORTS OR DATA PRODUCTS

CALL OUR TOLL-FREE ORDER DESK: 800-999-6779 (U.S. and Canada)
Other areas, please call 703-834-0125 FAX: 703-834-0110
(Visa, MasterCard, check, or money order acceptable for payment.)

ASSISTANCE

For **assistance** with general agricultural statistics or further information about NASS or its products or services, contact the **Agricultural Statistics Hotline** at **800-727-9540**, 7:30 a.m. to 4:00 p.m. ET, or e-mail: nass@nass.usda.gov.

Bring the Future into Focus.

Agricultural Outlook Forum 2000



- Commodity Outlook, 2000 and Beyond
- Coming to Terms with Biotechnology
- Future of Farming and Rural America
- Farming under Contract
- Impact of Agribusiness Mergers
- New Markets: E-Commerce, Organic Foods, Biomass
- WTO Talks, Animal & Plant Health Trade Rules

Bring your future into focus at the U.S. Department of Agriculture's Outlook Forum 2000. Hear industry leaders, producers and top officials discuss issues confronting agriculture. Receive up-to-date commodity forecasts plus new 10-year projections. Network with hundreds of experts from agriculture, business and government at this popular event.

For program and registration details, access the Forum web site, send an e-mail to agforum@oce.usda.gov, or call 202-720-3050. *Register today; rates go up after February 1.*

www.usda.gov/oce

February 24-25, 2000 • Arlington, Virginia