



Cold Storage

Released February 18, 2000, by the National Agricultural Statistics Service (NASS), Agricultural Statistics Board, U.S. Department of Agriculture. For information on "Cold Storage" call Linda Simpson at (202) 720-8784, office hours 7:00 a.m. to 4:30 p.m. ET.

HIGHLIGHTS

Frozen food stocks in refrigerated warehouses on January 31, 2000 were greater than year earlier levels for butter and chicken. January 2000 stocks of chicken, at 800 million pounds, broke the previous record January high of 717 million pounds set in 1999. Cooler stocks of pecans and peanuts were also higher than a year earlier.

Total red meat supplies in freezers were 3 percent above December 1999, but were 7 percent below January 1999. Frozen pork stocks were 7 percent above last month, but were 13 percent below last year. Stocks of pork bellies increased 9 percent from last month, but were 47 percent below the January 1999 stocks.

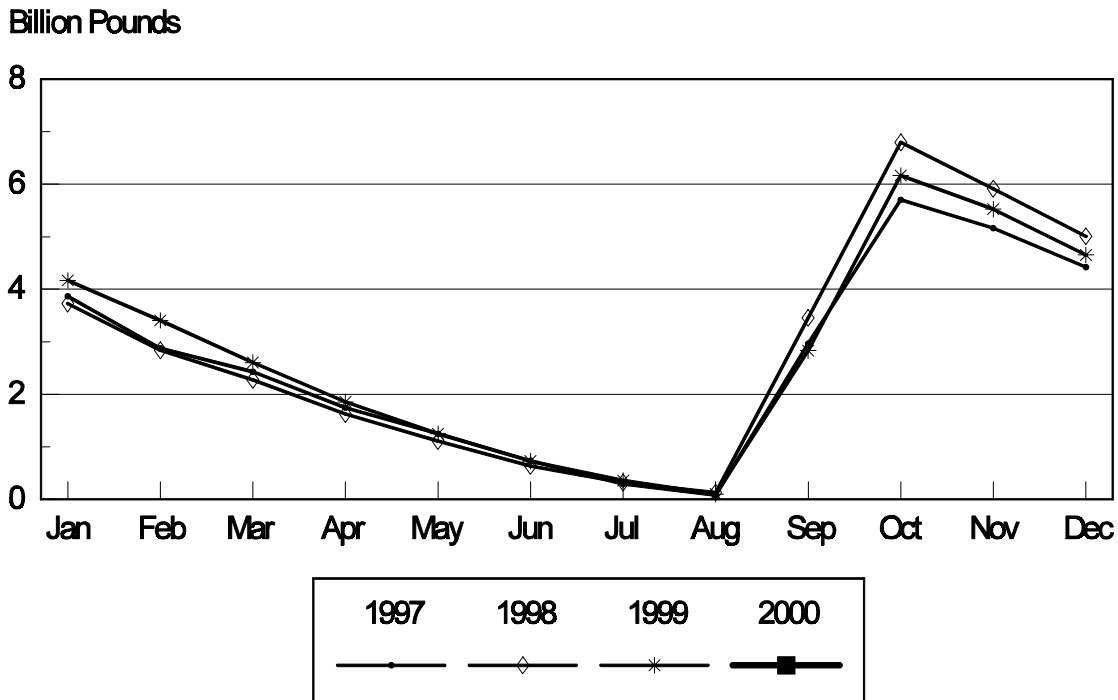
Total frozen poultry supplies were up 5 percent from last month and were 3 percent above last year's level. Total stocks of chicken were down slightly from last month, but were 12 percent above January 1999. Total pounds of turkey in freezers increased 23 percent from last month, but were 14 percent below last year.

Public cooler occupancy was at 44 percent of capacity, down 6 points from last year. Public freezer occupancy at 61 percent was 4 percentage points below last year.

Table of Contents

	Page
Stocks in Cold Storage: By Commodity, United States, January 2000	3
Stocks in Cold Storage: By Commodity, Region, and United States, December 31, 1999	6
Stocks in Cold Storage: By Commodity, Region, and United States, January 31, 2000	10
Public General Warehouses: Cold Storage Space Occupied by Region and United States, January 2000	14
Apples in Cold Storage: By State and United States, January 2000	15
Survey and Estimating Procedures, Revision Policy and Reliability	16

Fresh Apples Cold Storage Stocks, 1997 - 2000 United States



**Stocks in Cold Storage: By Commodity,
United States, January 2000**

Commodity	Stocks in All Warehouses			Percent of		Public Warehouse Stocks
	Jan 31, 1999	Dec 31, 1999	Jan 31, 2000	Jan 1999	Dec 1999	Jan 31, 2000
	<i>1,000 Pounds</i>	<i>1,000 Pounds</i>	<i>1,000 Pounds</i>	<i>Percent</i>	<i>Percent</i>	<i>1,000 Lbs</i>
Fresh Fruit						
Apples						
Regular Storage	563,368	862,124	563,604	100	65	
Controlled Atmosphere	3,605,641	3,790,727	3,448,067	96	91	
Total	4,169,009	4,652,851	4,011,671	96	86	39,843
Pears						
Bartlett	758	18,115	5,149	679	28	
Other Varieties	235,086	281,089	233,886	99	83	
Total	235,844	299,204	239,035	101	80	154
Nuts						
Shelled						
Peanuts	420,178	451,076	478,516	114	106	
Pecans	27,402	17,756	33,609	123	189	
Other Shelled	131,094	126,122	142,948	109	113	
Total	578,674	594,954	655,073	113	110	384,200
In-Shell						
Peanuts	16,420	19,291	16,589	101	86	
Pecans	118,793	133,276	236,065	199	177	
Other In-Shell	7,412	8,946	5,567	75	62	
Total	142,625	161,513	258,221	181	160	75,647
Dairy Products						
Butter, Total	60,757	25,082	79,060	130	315	72,848
(Government Owned)	247	223	298	121	134	
Natural Cheese						
American, Total	452,205	457,990	481,082	106	105	
(Government Owned)	30	18	80	267	444	
Swiss	10,993	8,381	9,735	89	116	
Other Natural Cheese	159,239	154,890	178,340	112	115	
Total	622,437	621,261	669,157	108	108	407,325
Eggs, Frozen						
Whites	1,174	501	571	49	114	
Yolks	658	722	752	114	104	
Whole & Mixed	8,469	8,085	10,186	120	126	
Unclassified	746	763	561	75	74	
Total	11,047	10,071	12,070	109	120	11,416
Frozen Poultry						
Chicken						
Broilers (Whole)	22,947	34,692	35,807	156	103	
Hens	7,564	7,763	7,069	93	91	
Other Chicken	686,240	760,904	757,051	110	99	
Total	716,751	803,359	799,927	112	100	
Turkey						
Whole Turkeys	147,302	90,538	123,419	84	136	
Other Turkey	216,539	163,713	188,746	87	115	
Total	363,841	254,251	312,165	86	123	
Ducks	4,177	3,760	4,010	96	107	
Total	1,084,769	1,061,370	1,116,102	103	105	1,021,401

**Stocks in Cold Storage: By Commodity,
United States, January 2000 (Continued)**

Commodity	Stocks in All Warehouses			Percent of		Public Warehouse Stocks
	Jan 31, 1999	Dec 31, 1999	Jan 31, 2000	Jan 1999	Dec 1999	Jan 31, 2000
	<i>1,000 Pounds</i>	<i>1,000 Pounds</i>	<i>1,000 Pounds</i>	<i>Percent</i>	<i>Percent</i>	<i>1,000 Lbs</i>
Frozen Fruit						
Apples	73,387	72,517	78,793	107	109	
Apricots	10,015	8,993	8,014	80	89	
Blackberries, Total	19,391	22,086	19,761	102	89	
IQF	10,933	13,774	12,804	117	93	
Pails and Tubs	2,779	1,865	1,473	53	79	
Barrels, 400 lbs net	4,211	4,872	3,766	89	77	
Concentrate	1,468	1,575	1,718	117	109	
Blueberries	60,759	58,981	52,697	87	89	
Boysenberries	3,608	5,133	4,610	128	90	
Cherries, Tart (RSP)	108,846	116,364	105,433	97	91	
Cherries, Tart (Juice)	3,348	2,029	1,721	51	85	
Cherries, Sweet	15,103	12,853	12,427	82	97	
Grapes	5,183	4,722	4,028	78	85	
Peaches	61,480	70,616	59,814	97	85	
Raspberries, Black	554	1,058	897	162	85	
Raspberries, Red, Total	34,698	55,902	47,474	137	85	
IQF	9,187	16,367	14,836	161	91	
Pails and Tubs	9,557	14,343	13,190	138	92	
Barrels, 400 lbs net	12,266	22,255	16,657	136	75	
Concentrate	3,688	2,937	2,791	76	95	
Strawberries, Total	179,845	277,691	261,669	145	94	
Pkgs. 20 Oz. & Less	120,143		147,058	122		
Pkgs. Over 20 Oz.	59,702		114,611	192		
Other Frozen Fruit	526,880	746,084	681,250	129	91	
Total	1,103,097	1,455,029	1,338,588	121	92	798,010
Frozen Juice						
Orange Juice Conc. ¹ (Gallon Equivalent)	1,999,354	1,330,675	1,578,502	79	119	
Other Juice Concentrate	202,037	134,466	159,509			
Total	426,468	328,775	326,674	77	99	
Total	2,425,822	1,659,450	1,905,176	79	115	204,777
Frozen Vegetables						
Asparagus	5,130	12,076	9,271	181	77	
Limas, Fordhook	8,984	15,302	10,542	117	69	
Limas, Baby	57,018	56,691	47,053	83	83	
Green Beans, Reg. Cut	154,756	150,310	127,231	82	85	
Green Beans, Fr. Style	35,654	36,080	30,764	86	85	
Broccoli, Spears	33,571	34,354	31,409	94	91	
Broccoli, Chopped & Cut	85,540	123,021	109,445	128	89	
Brussels Sprouts	20,460	25,649	23,447	115	91	
Carrots, Diced	67,736	94,465	84,919	125	90	
Carrots, Other	162,291	212,732	197,995	122	93	
Cauliflower	51,916	57,812	62,854	121	109	
Corn, Cut	358,368	330,204	297,818	83	90	
Corn, Cob	242,193	255,662	235,952	97	92	
Mixed Vegetables	51,200	51,537	51,641	101	100	
Okra	38,920	39,837	35,683	92	90	
Onion Rings	14,571	17,026	26,311	181	155	
Onions, Other	24,665	41,236	30,779	125	75	
Blackeye Peas	6,840	6,517	5,022	73	77	
Green Peas	247,113	276,154	236,620	96	86	
Peas & Carrots Mixed	8,286	11,314	8,356	101	74	
Spinach	77,258	73,349	81,027	105	110	
Squash, Summer/Zucchini	63,781	58,254	53,301	84	91	
Southern Greens	31,578	26,944	27,654	88	103	
Other Vegetables	289,252	272,866	323,656	112	119	
Total	2,137,081	2,279,392	2,148,750	101	94	1,367,530

See footnotes at end of table.

--continued

**Stocks in Cold Storage: By Commodity,
United States, January 2000 (Continued)**

Commodity	Stocks in All Warehouses			Percent of		Public Warehouse Stocks
	Jan 31, 1999	Dec 31, 1999	Jan 31, 2000	Jan 1999	Dec 1999	Jan 31, 2000
	<i>1,000 Pounds</i>	<i>1,000 Pounds</i>	<i>1,000 Pounds</i>	<i>Percent</i>	<i>Percent</i>	<i>1,000 Lbs</i>
Potatoes						
French Fries	959,167	945,637	901,441	94	95	
Other Frozen	260,483	219,752	228,649	88	104	
Total	1,219,650	1,165,389	1,130,090	93	97	823,171
Meat						
Frozen Beef						
Boneless ²	266,754	269,719	258,875	97	96	
Beef Cuts ³	34,341	44,443	48,696	142	110	
Total	301,095	314,162	307,571	102	98	305,255
(Government Owned)	3,884	6,247	6,928	178	111	
Frozen Pork						
Picnics, Bone-in	11,733	6,785	9,383	80	138	
Hams, Total	79,859	61,055	76,635	96	126	72,268
Bone-in	39,681	33,050	40,856	103	124	39,781
Boneless ⁴	40,178	28,005	35,779	89	128	32,487
Bellies	82,605	40,300	43,761	53	109	
Loins, Total	33,307	26,920	28,446	85	106	24,719
Bone-in	21,242	15,200	16,120	76	106	
Boneless ⁵	12,065	11,720	12,326	102	105	
Ribs ⁶	80,635	66,662	70,193	87	105	
Butts	13,060	10,482	11,318	87	108	
Trimmings ⁷	66,612	54,752	55,480	83	101	
Other ⁸	80,963	91,823	87,456	108	95	
Variety Meats ⁹	50,076	39,804	44,703	89	112	
Unclassified ¹⁰	11,465	16,795	15,568	136	93	
Total	510,315	415,378	442,943	87	107	382,566
(Government Owned)	1,755	5,471	6,377	363	117	
Other						
Veal	4,522	5,123	4,801	106	94	
Lamb & Mutton	10,452	8,740	10,377	99	119	
Total	14,974	13,863	15,178	101	109	14,976
Canned						
Canned Hams	5,846	4,568	5,063	87	111	
Other Canned Meat	815	370	404	50	109	
Total	6,661	4,938	5,467	82	111	2,750
Total	833,045	748,341	771,159	93	103	705,547
Miscellaneous						
Cooler	845,575	827,853	759,608	90	92	452,054
Freezer	2,060,977	1,973,560	1,956,422	95	99	1,896,511
Total	2,906,552	2,801,413	2,716,030	93	97	2,348,565
Commodities						
Stored in Coolers	6,600,825	7,162,574	6,598,232	100	92	1,361,973
Stored in Freezers	10,929,584	10,372,746	10,451,950	96	101	6,898,461
Total	17,530,409	17,535,320	17,050,182	97	97	8,260,434

¹ Adjusted to 42.0 degrees Brix equivalent (9.896 pounds per gallon).

² Includes all boxed boneless beef, such as ground beef, roasts, steaks, loins, strips, rounds, trimmings, etc. Variety meats (edible offal), such as tongues, livers, hearts, kidneys, and other organs removed from slaughtered beef, are included as miscellaneous freezer stocks.

³ Includes all boxed primal beef cuts, bone-in.

⁴ Includes full ham, bone removed and individual muscles separated.

⁵ Includes pork tenderloins.

⁶ Includes spareribs and backribs.

⁷ Includes 42% regular trimmings, 72% special trimmings, boneless picnic meat, jowls, neckbone trimmings, blade, cheek, head, and shank meat, etc. Packaged bacon, sausage, and processed items, such as hot dogs and luncheon meats, are included in miscellaneous cooler or freezer stocks.

⁸ Includes ears, tails, feet, neckbones and snouts.

⁹ Includes tongues, kidneys, livers, stomachs, hearts, chitterlings, salivary glands, and other organs removed from slaughtered hogs.

¹⁰ Includes pork unable to be classified elsewhere in this report.

**Stocks in Cold Storage: By Commodity, Region,
and United States, December 31, 1999**

Commodity	New England	Middle Atlantic	East North Central	West North Central	South Atlantic
	<i>1,000 Pounds</i>	<i>1,000 Pounds</i>	<i>1,000 Pounds</i>	<i>1,000 Pounds</i>	<i>1,000 Pounds</i>
Total Fresh Apples	74,232	539,032	422,099	2,726	282,773
Nuts					
Shelled					
Peanuts		38	189	27	267,921
Pecans ¹		76			5,529
In-Shell					
Pecans ¹		4			29,465
Dairy Products					
Natural Cheese					
American, Total	19,594	38,671	219,909	97,261	784
Other Natural Cheese	577	7,110	80,374	51,391	2,603
Frozen Poultry					
Broilers (Whole)	107	325	720	858	12,380
Hens	1	322	1,288	1,760	2,019
Other Chicken	1,926	6,969	17,758	31,473	211,307
Total	2,034	7,616	19,766	34,091	225,706
Whole Turkeys	1,721	5,952	5,507	18,210	14,452
Other Turkey	299	9,933	13,484	52,390	46,513
Total	2,020	15,885	18,991	70,600	60,965
Ducks	31	176	3,166	18	17
Total	4,085	23,677	41,923	104,709	286,688
Frozen Fruit					
Apples	22	23,117	34,312	108	266
Blueberries	10,632	7,162	26,805	226	1,288
Cherries, Tart (RSP)	38	6,909	98,574	64	27
Cherries, Sweet		740	9,234	62	95
Peaches	35	2,599	4,564	48	342
Raspberries, Red	362	1,809	870	135	71
Strawberries, Total	115	3,226	4,761	2,457	1,256
Other Frozen Fruit	205,383	33,487	370,175	1,314	811

See footnotes at end of table.

--continued

**Stocks in Cold Storage: By Commodity, Region,
and United States, December 31, 1999 (continued)**

Commodity	East South Central	West South Central	Mountain	Pacific	US Total
	<i>1,000 Pounds</i>	<i>1,000 Pounds</i>	<i>1,000 Pounds</i>	<i>1,000 Pounds</i>	<i>1,000 Pounds</i>
Total Fresh Apples	21	1,344	29,584	3,301,040	4,652,851
Nuts					
Shelled					
Peanuts	48,619	133,813	167	302	451,076
Pecans ¹	767	11,309		75	17,756
In-Shell					
Pecans ¹	3,858	99,949			133,276
Dairy Products					
Natural Cheese					
American, Total		302	10,346	71,123	457,990
Other Natural Cheese	150	179	276	12,230	154,890
Frozen Poultry					
Broilers (Whole)	1,604	16,712	405	1,581	34,692
Hens	1,090	452	145	686	7,763
Other Chicken	160,018	272,620	3,265	55,568	760,904
Total	162,712	289,784	3,815	57,835	803,359
Whole Turkeys	264	15,230	12,594	16,608	90,538
Other Turkey	1,224	24,486	3,230	12,154	163,713
Total	1,488	39,716	15,824	28,762	254,251
Ducks	1	6	1	344	3,760
Total	164,201	329,506	19,640	86,941	1,061,370
Frozen Fruit					
Apples	142	430	195	13,925	72,517
Blueberries	33	461	150	12,224	58,981
Cherries, Tart (RSP)	66	163	2,530	7,993	116,364
Cherries, Sweet	4	121	541	2,056	12,853
Peaches	127	674	173	62,054	70,616
Raspberries, Red	150	537	88	51,880	55,902
Strawberries, Total	3,408	17,235	4,122	241,111	277,691
Other Frozen Fruit	807	10,086	1,788	122,233	746,084

See footnotes at end of table.

--continued

**Stocks in Cold Storage: By Commodity, Region,
and United States, December 31, 1999 (continued)**

Commodity	New England	Middle Atlantic	East North Central	West North Central	South Atlantic
	<i>1,000 Pounds</i>	<i>1,000 Pounds</i>	<i>1,000 Pounds</i>	<i>1,000 Pounds</i>	<i>1,000 Pounds</i>
Frozen Juice					
Orange Juice Conc. ²	77		2,192	502	1,279,105
Other Juice Concentrate	268	16,418	11,483	1,614	133,931
Frozen Vegetables ³					
Asparagus		486	5,544	46	306
Limas, Fordhook		546	424	175	4,079
Limas, Baby		4,868	1,318	727	15,116
Green Beans, Reg. Cut		24,408	35,234	1,683	9,620
Green Beans, Fr. Style		6,459	6,296	195	1,550
Broccoli, Spears		5,247	359	1,466	2,557
Broccoli, Chopped & Cut		5,347	9,236	3,907	7,010
Brussels Sprouts		2,090	365	543	703
Carrots, Diced		5,145	21,593	880	5,614
Carrots, Other		10,233	12,007	2,034	12,189
Cauliflower		2,528	2,929	2,178	1,372
Corn, Cut		35,094	27,967	17,562	11,816
Corn, Cob		12,521	15,545	29,255	9,567
Mixed Vegetables		2,798	3,822	1,580	6,445
Okra		1,466	172	1,022	11,508
Onion Rings		984	9,919	1,725	1,127
Onions, Other		3,491	4,546	347	2,727
Blackeye Peas		164	325	6	4,495
Green Peas		34,263	23,015	13,645	8,824
Peas & Carrots Mixed		524	421	36	594
Spinach		9,669	1,303	489	5,531
Squash, Summer/Zucchini		4,056	12,707	528	15,835
Southern Greens		2,882	21	9	9,497
Other Vegetables		34,073	24,879	14,713	37,942
Potatoes					
French Fries	35,443	31,270	57,372	98,775	19,227
Other Frozen	5,277	10,876	33,566	6,776	5,156
Meat					
Frozen Beef					
Boneless	7,561	30,921	35,048	54,399	20,992
Beef Cuts	1,068	1,525	4,598	8,546	2,068
Frozen Pork					
Ribs	458	1,147	18,796	33,634	5,349
Trimnings	117	1,515	14,404	27,235	6,514
Other	3,795	3,478	20,147	27,915	6,396
Other					
Veal	216	522	2,056	497	34
Lamb & Mutton	348	2,236	1,041	232	483

See footnotes at end of table.

--continued

**Stocks in Cold Storage: By Commodity, Region,
and United States, December 31, 1999 (continued)**

Commodity	East South Central	West South Central	Mountain	Pacific	US Total
	<i>1,000 Pounds</i>	<i>1,000 Pounds</i>	<i>1,000 Pounds</i>	<i>1,000 Pounds</i>	<i>1,000 Pounds</i>
Frozen Juice					
Orange Juice Concentrate	451	2,491	1,725	44,132	1,330,675
Other Juice Concentrate	1,332	15,595	389	147,745	328,775
Frozen Vegetables ³					
Asparagus		493	168	5,033	12,076
Limas, Fordhook		323	420	9,335	15,302
Limas, Baby		471	9,135	25,056	56,691
Green Beans, Reg. Cut		1,212	99	78,054	150,310
Green Beans, Fr. Style		360	102	21,118	36,080
Broccoli, Spears		13,495	62	11,168	34,354
Broccoli, Chopped & Cut		35,539	2,679	59,303	123,021
Brussels Sprouts		691	284	20,973	25,649
Carrots, Diced		1,906	234	59,093	94,465
Carrots, Other		7,851	1,667	166,751	212,732
Cauliflower		11,909	1,660	35,236	57,812
Corn, Cut		2,993	8,217	226,555	330,204
Corn, Cob		1,600	39	187,135	255,662
Mixed Vegetables		7,075	142	29,675	51,537
Okra		25,093		576	39,837
Onion Rings		1,557	1,281	433	17,026
Onions, Other		731	3,373	26,021	41,236
Blackeye Peas		1,344		183	6,517
Green Peas		3,660	15,197	177,550	276,154
Peas & Carrots Mixed		148	7	9,584	11,314
Spinach		10,845	10,521	34,991	73,349
Squash, Summer/Zucchini		6,925	645	17,558	58,254
Southern Greens		13,829		706	26,944
Other Vegetables		27,846	5,027	128,386	272,866
Potatoes					
French Fries	1,275	6,901	252,877	442,497	945,637
Other Frozen	715	7,437	54,436	95,513	219,752
Meat					
Frozen Beef					
Boneless ⁴	2,988	51,572	6,331	59,907	269,719
Beef Cuts ⁵	277	8,334	6,856	11,171	44,443
Frozen Pork					
Ribs ⁶	2,760	1,497	56	2,965	66,662
Trimmings ⁷	255	2,701	255	1,756	54,752
Other ⁸	10,258	13,120	208	6,506	91,823
Other					
Veal	2	229	20	1,547	5,123
Lamb & Mutton		535	669	3,196	8,740

¹ East North Central combined with South Atlantic. Mountain and West North Central combined with West South Central.

² Middle Atlantic combined with South Atlantic.

³ New England combined with Middle Atlantic. East South Central combined with South Atlantic.

⁴ Includes all boxed boneless beef, such as ground beef, roasts, steaks, loins, strips, rounds, trimmings, etc. Variety meats (edible offal), such as tongues, livers, hearts, kidneys, and other organs removed from slaughtered beef, are included as miscellaneous freezer stocks.

⁵ Includes all boxed primal beef cuts, bone-in.

⁶ Includes spareribs and backribs.

⁷ Includes 42% regular trimmings, 72% special trimmings, boneless picnic meat, jowls, neckbone trimmings, blade, cheek, head, and shank meat, etc. Packaged bacon, sausage, and processed items, such as hot dogs and luncheon meats, are included in miscellaneous cooler or freezer stocks.

⁸ Includes ears, tails, feet, neckbones and snouts.

**Stocks in Cold Storage: By Commodity, Region,
and United States, January 31, 2000**

Commodity	New England	Middle Atlantic	East North Central	West North Central	South Atlantic
	<i>1,000 Pounds</i>	<i>1,000 Pounds</i>	<i>1,000 Pounds</i>	<i>1,000 Pounds</i>	<i>1,000 Pounds</i>
Total Fresh Apples	58,066	482,853	387,952	1,447	227,673
Nuts					
Shelled					
Peanuts		40	207	30	290,129
Pecans ¹		87			7,334
In-Shell					
Pecans ¹		2			61,334
Dairy Products					
Natural Cheese					
American, Total	19,893	33,628	229,926	102,986	723
Other Natural Cheese	588	8,813	99,180	57,372	1,882
Frozen Poultry					
Broilers (Whole)	108	483	692	897	11,859
Hens	1	333	963	953	2,194
Other Chicken	1,791	8,659	17,818	31,564	201,887
Total	1,900	9,475	19,473	33,414	215,940
Whole Turkeys	1,780	6,757	7,131	25,692	24,405
Other Turkey	270	11,115	14,732	58,218	52,539
Total	2,050	17,872	21,863	83,910	76,944
Ducks	33	178	3,321	143	17
Total	3,983	27,525	44,657	117,467	292,901
Frozen Fruit					
Apples	20	25,069	38,780	109	325
Blueberries	10,286	6,793	23,851	202	1,002
Cherries, Tart (RSP)	34	6,672	88,985	59	45
Cherries, Sweet		627	8,855	53	59
Peaches	30	2,666	3,881	39	337
Raspberries, Red	318	1,671	782	114	36
Strawberries, Total	102	3,251	4,545	2,390	898
Other Frozen Fruit	187,316	31,083	336,244	2,055	1,993

See footnotes at end of table.

--continued

**Stocks in Cold Storage: By Commodity, Region,
and United States, January 31, 2000 (continued)**

Commodity	East South Central	West South Central	Mountain	Pacific	US Total
	<i>1,000 Pounds</i>	<i>1,000 Pounds</i>	<i>1,000 Pounds</i>	<i>1,000 Pounds</i>	<i>1,000 Pounds</i>
Total Fresh Apples		8,036	23,661	2,821,983	4,011,671
Nuts					
Shelled					
Peanuts	54,551	133,132	159	268	478,516
Pecans ¹	1,089	24,985		114	33,609
In-Shell					
Pecans ¹	3,710	171,019			236,065
Dairy Products					
Natural Cheese					
American, Total		447	11,751	81,728	481,082
Other Natural Cheese	160	234	297	9,814	178,340
Frozen Poultry					
Broilers (Whole)	1,509	17,509	402	2,348	35,807
Hens	1,215	399	87	924	7,069
Other Chicken	159,413	286,126	2,976	46,817	757,051
Total	162,137	304,034	3,465	50,089	799,927
Whole Turkeys	202	19,724	12,969	24,759	123,419
Other Turkey	1,114	21,458	11,386	17,914	188,746
Total	1,316	41,182	24,355	42,673	312,165
Ducks	1	10	1	306	4,010
Total	163,454	345,226	27,821	93,068	1,116,102
Frozen Fruit					
Apples	150	570	138	13,632	78,793
Blueberries	86	459	133	9,885	52,697
Cherries, Tart (RSP)	50	234	1,877	7,477	105,433
Cherries, Sweet	4	57	497	2,275	12,427
Peaches	81	523	244	52,013	59,814
Raspberries, Red	231	518	13	43,791	47,474
Strawberries, Total	3,564	17,651	3,253	226,015	261,669
Other Frozen Fruit	407	9,381	2,025	110,746	681,250

See footnotes at end of table.

--continued

**Stocks in Cold Storage: By Commodity, Region,
and United States, January 31, 2000 (continued)**

Commodity	New England	Middle Atlantic	East North Central	West North Central	South Atlantic
	<i>1,000 Pounds</i>	<i>1,000 Pounds</i>	<i>1,000 Pounds</i>	<i>1,000 Pounds</i>	<i>1,000 Pounds</i>
Frozen Juice					
Orange Juice Conc. ²	37		2,601	202	1,518,875
Other Juice Concentrate	195	18,805	12,120	1,613	133,346
Frozen Vegetables ³					
Asparagus		500	4,302	32	343
Limas, Fordhook		504	268	178	2,996
Limas, Baby		4,471	1,248	681	11,704
Green Beans, Reg. Cut		18,975	30,201	1,597	7,666
Green Beans, Fr. Style		5,340	4,709	161	1,173
Broccoli, Spears		4,673	255	1,391	2,734
Broccoli, Chopped & Cut		5,703	8,342	3,589	6,593
Brussels Sprouts		2,224	325	657	824
Carrots, Diced		4,923	18,781	847	4,963
Carrots, Other		10,844	10,240	2,051	10,658
Cauliflower		2,499	3,063	2,180	1,730
Corn, Cut		33,997	26,272	16,111	9,826
Corn, Cob		11,046	14,508	26,457	10,991
Mixed Vegetables		2,234	4,516	1,489	6,560
Okra		1,345	150	927	10,011
Onion Rings		1,050	9,633	1,712	757
Onions, Other		3,821	3,783	353	2,348
Blackeye Peas		247	260	17	3,567
Green Peas		30,498	21,086	9,644	8,024
Peas & Carrots Mixed		475	434	29	602
Spinach		9,724	1,124	488	6,559
Squash, Summer/Zucchini		3,290	12,076	574	14,399
Southern Greens		2,980	20	22	10,784
Other Vegetables		32,723	21,718	14,136	47,942
Potatoes					
French Fries	36,718	34,496	50,648	105,444	22,990
Other Frozen	6,088	10,551	29,333	6,374	5,837
Meat					
Frozen Beef					
Boneless ⁴	8,191	30,674	33,609	47,801	21,774
Beef Cuts ⁵	883	1,190	4,178	8,704	4,054
Frozen Pork					
Ribs ⁶	477	1,390	18,137	35,450	6,961
Trimmings ⁷	119	1,302	14,634	29,281	7,369
Other ⁸	4,043	3,321	17,300	28,113	7,107
Other					
Veal	187	384	1,944	618	27
Lamb & Mutton	346	2,650	1,191	555	458

See footnotes at end of table.

--continued

**Stocks in Cold Storage: By Commodity, Region,
and United States, January 31, 2000 (continued)**

Commodity	East South Central	West South Central	Mountain	Pacific	US Total
	<i>1,000 Pounds</i>	<i>1,000 Pounds</i>	<i>1,000 Pounds</i>	<i>1,000 Pounds</i>	<i>1,000 Pounds</i>
Frozen Juice					
Orange Juice Concentrate	372	2,803	1,905	51,707	1,578,502
Other Juice Concentrate	1,603	17,111	318	141,563	326,674
Frozen Vegetables ³					
Asparagus		550	121	3,423	9,271
Limas, Fordhook		307	420	5,869	10,542
Limas, Baby		449	8,192	20,308	47,053
Green Beans, Reg. Cut		1,474	86	67,232	127,231
Green Beans, Fr. Style		305	65	19,011	30,764
Broccoli, Spears		14,901	308	7,147	31,409
Broccoli, Chopped & Cut		31,133	2,430	51,655	109,445
Brussels Sprouts		672	122	18,623	23,447
Carrots, Diced		1,890	242	53,273	84,919
Carrots, Other		8,375	1,633	154,194	197,995
Cauliflower		17,095	1,552	34,735	62,854
Corn, Cut		3,510	4,501	203,601	297,818
Corn, Cob		1,675	9	171,266	235,952
Mixed Vegetables		7,375	97	29,370	51,641
Okra		22,807		443	35,683
Onion Rings		1,330	1,070	10,759	26,311
Onions, Other		721	3,256	16,497	30,779
Blackeye Peas		782		149	5,022
Green Peas		3,305	13,496	150,567	236,620
Peas & Carrots Mixed		134	20	6,662	8,356
Spinach		13,732	12,310	37,090	81,027
Squash, Summer/Zucchini		6,126	537	16,299	53,301
Southern Greens		13,161	133	554	27,654
Other Vegetables		29,820	3,730	173,587	323,656
Potatoes					
French Fries	1,311	9,090	213,403	427,341	901,441
Other Frozen	846	7,722	47,273	114,625	228,649
Meat					
Frozen Beef					
Boneless ⁴	2,123	49,556	6,058	59,089	258,875
Beef Cuts ⁵	320	11,013	6,382	11,972	48,696
Frozen Pork					
Ribs ⁶	2,890	1,644	65	3,179	70,193
Trimmings ⁷	260	1,937	210	368	55,480
Other ⁸	8,598	12,971	206	5,797	87,456
Other					
Veal		297	37	1,307	4,801
Lamb & Mutton	79	452	710	3,936	10,377

¹ East North Central combined with South Atlantic. Mountain and West North Central Combined with West South Central.

² Middle Atlantic combined with South Atlantic.

³ New England combined with Middle Atlantic. East South Central combined with South Atlantic.

⁴ Includes all boxed boneless beef, such as ground beef, roasts, steaks, loins, strips, rounds, trimmings, etc. Variety meats (edible offal), such as tongues, livers, hearts, kidneys, and other organs removed from slaughtered beef, are included as miscellaneous freezer stocks.

⁵ Includes all boxed primal beef cuts, bone-in.

⁶ Includes spareribs and backribs.

⁷ Includes 42% regular trimmings, 72% special trimmings, boneless picnic meat, jowls, neckbone trimmings, blade, cheek, head, and shank meat, etc. Packaged bacon, sausage, and processed items, such as hot dogs and luncheon meats, are included in miscellaneous cooler or freezer stocks.

⁸ Includes ears, tails, feet, neckbones and snouts.

**Public General Warehouses: Cold Storage Space Occupied
by Region and United States, January 2000**

Region	Cooler				Freezer			
	Usable Space	Usable Space Occupied			Usable Space	Usable Space Occupied		
		Jan 31 2000	Jan 31 1999	Dec 31 1999		Jan 31 2000	Jan 31 1999	Dec 31 1999
	<i>1,000 Cu Ft</i>	<i>Percent</i>	<i>Percent</i>	<i>Percent</i>	<i>1,000 Cu Ft</i>	<i>Percent</i>	<i>Percent</i>	<i>Percent</i>
New England	2,450	51	52	50	20,251	72	73	70
Middle Atlantic	35,525	73	66	62	119,134	79	77	76
E. North Central	49,496	48	49	47	173,046	57	57	55
W. North Central	44,892	45	30	29	132,610	60	48	51
South Atlantic	50,908	44	45	47	168,359	54	59	62
E. South Central	8,975	48	56	55	65,670	51	47	46
W. South Central	20,819	49	37	38	133,518	75	62	64
Mountain	5,993	81	79	74	51,999	69	54	50
Pacific	40,861	41	34	34	266,590	71	71	70
US	259,919	50	45	44	1,131,177	65	61	61

Cold Storage Regions



**Apples in Cold Storage: By State
and United States, January 2000**

State	All Warehouses		
	Jan 31, 1999	Dec 31, 1999	Jan 31, 2000
	<i>1,000 Pounds</i>	<i>1,000 Pounds</i>	<i>1,000 Pounds</i>
CA	95,783	118,448	102,835
MI	241,038	382,346	357,336
N ENG	24,552	74,232	58,066
NY	258,720	334,950	292,488
OH	9,160	20,535	15,978
OR	30,583	32,951	47,556
PA	161,742	203,571	190,109
VA	127,417	163,288	137,210
WA	3,064,218	3,149,642	2,671,592
WV	43,997	76,458	61,288
Other States	111,799	96,430	77,213
US	4,169,009	4,652,851	4,011,671

Survey Procedures: Questionnaires are mailed about the 24th of each month to all operators on the list of approximately 1,400 public and private cold storage warehouses. In addition, apple data are obtained from special surveys and other sources (State Departments of Agriculture, U.S. Apple Association, etc.). All survey data represent stocks as of the end of the month.

Data are collected from warehouses artificially cooled to a temperature of 50 degrees Fahrenheit or lower, and whose food products are normally stored for 30 days or more. All food items in these facilities are reported regardless of the number of days stored at the time of the report. Also included are specialized storage facilities meeting the 30 day requirement, such as fruit houses, dairy manufacturing plants, frozen fruit, fruit juice, and vegetable processors, and poultry and meat packing plants. Excluded are stocks in space maintained by wholesalers, jobbers, distributors, chain stores, locker plants containing individual lockers, meat packer branch houses, and frozen food processors whose entire inventories are turned over more than once a month.

Estimating Procedures: Data for reporting firms are added to estimates for non-reporting firms to obtain regional and National totals. Estimates for non-reporting firms are obtained by multiplying the previous month's figure by a percent change from the previous month. The percent change is calculated for each item from totals of the current and previous month summed from firms that reported both months.

Revision Policy: Data are revised the following month based on late reports or corrected data. Final figures are published in the annual summary in February of the following year.

Reliability: Reports are received from 900 firms each month which represent about 70 percent of the total capacity. Firms that are not on the list or firms who have never reported are not represented in the data. Monthly data can vary due to different firms reporting month to month. Survey data are also subject to non-sampling errors such as omissions and mistakes in reporting and in processing the data. While these errors cannot be measured directly, they are minimized by carefully reviewing all reported data for consistency and reasonableness.

The next "Cold Storage" report will be released at 3 p.m. ET on March 20, 2000.

The United States Department of Agriculture (USDA) prohibits discrimination in all its programs on the basis of race, color, national origin, gender, religion, age, disability, political beliefs, sexual orientation, and marital or family status. (Not all prohibited bases apply to all programs.) Persons with disabilities who require alternative means for communication of program information (braille, large print, audiotape, etc.) should contact the USDA's TARGET Center at 202-720-2600 (voice and TDD).

To file a complaint of discrimination, write USDA, Director, Office of Civil Rights, Room 326-W, Whitten Building, 14th and Independence Avenue, SW, Washington, D.C., 20250-9410, or call 202-720-5964 (voice or TDD). USDA is an equal opportunity provider and employer.

ACCESS TO REPORTS!!

For your convenience, there are several ways to obtain NASS reports, data products, and services:

INTERNET ACCESS

All NASS reports are available free of charge on the worldwide Internet. For access, connect to the Internet and go to the NASS Home Page at: <http://www.usda.gov/nass/>. Select "Today's Reports" or Publications and then Reports by Calendar or Publications and then Search, by Title or Subject.

E-MAIL SUBSCRIPTION

There are two options for subscribing via e-mail. All NASS reports are available by subscription free of charge direct to your e-mail address. 1) Starting with the NASS Home Page at <http://www.usda.gov/nass/>, click on **Publications**, then click on the **Subscribe by E-mail** button which takes you to the page describing e-mail delivery of reports. Finally, click on **Go to the Subscription Page** and follow the instructions. 2) If you do NOT have Internet access, send an e-mail message to: usda-reports@usda.mannlib.cornell.edu. In the body of the message type the word: **list**.

AUTOFAX ACCESS

NASSFax service is available for some reports from your fax machine. Please call 202-720-2000, using the handset attached to your fax. Respond to the voice prompts. Document 0411 is a list of available reports.

----- PRINTED REPORTS OR DATA PRODUCTS

CALL OUR TOLL-FREE ORDER DESK: 800-999-6779 (U.S. and Canada)
Other areas, please call 703-834-0125 FAX: 703-834-0110
(Visa, MasterCard, check, or money order acceptable for payment.)

ASSISTANCE

For **assistance** with general agricultural statistics or further information about NASS or its products or services, contact the **Agricultural Statistics Hotline** at **800-727-9540**, 7:30 a.m. to 4:00 p.m. ET, or e-mail: nass@nass.usda.gov.

Bring the Future into Focus.

Agricultural Outlook Forum 2000



- Commodity Outlook, 2000 and Beyond
- Coming to Terms with Biotechnology
- Future of Farming and Rural America
- Farming under Contract
- Impact of Agribusiness Mergers
- New Markets: E-Commerce, Organic Foods, Biomass
- WTO Talks, Animal & Plant Health Trade Rules

Bring your future into focus at the U.S. Department of Agriculture's Outlook Forum 2000. Hear industry leaders, producers and top officials discuss issues confronting agriculture. Receive up-to-date commodity forecasts plus new 10-year projections. Network with hundreds of experts from agriculture, business and government at this popular event.

For program and registration details, access the Forum web site, send an e-mail to agforum@oce.usda.gov, or call 202-720-3050. *Register today; rates go up after February 1.*

www.usda.gov/oce

February 24-25, 2000 • Arlington, Virginia