



Cold Storage

Released March 20, 2000, by the National Agricultural Statistics Service (NASS), Agricultural Statistics Board, U.S. Department of Agriculture. For information on "Cold Storage" call Linda Simpson at (202) 720-8784, office hours 7:00 a.m. to 4:30 p.m. ET.

HIGHLIGHTS

Frozen food stocks in refrigerated warehouses on February 29, 2000 were greater than year earlier levels for fruit, chicken, and beef. February 2000 stocks of chicken, at 794 million pounds, broke the previous record February high of 722 million pounds set in 1999. Cooler stocks of pecans and peanuts were also higher than a year earlier.

Total red meat supplies in freezers were 7 percent above January 2000 but were 4 percent below February 1999. Frozen pork stocks were 9 percent above last month but were 11 percent below last year. Stocks of pork bellies increased 14 percent from last month but were 46 percent below February 1999 stocks.

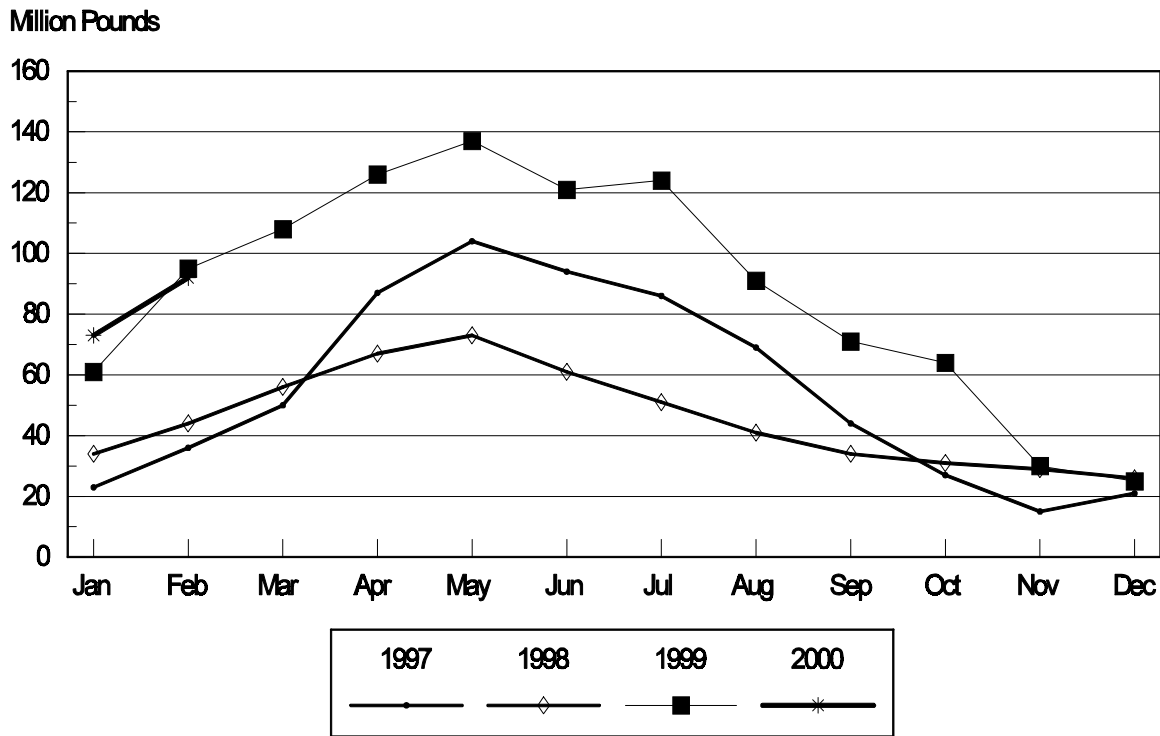
Total frozen poultry supplies were up 2 percent from last month and were 4 percent above last year's level. Total stocks of chicken were down 1 percent from last month but were 10 percent above February 1999. Total pounds of turkey in freezers increased 12 percent from last month but were 7 percent below last year.

Public cooler occupancy was at 46 percent of capacity, down 6 points from last year. Public freezer occupancy at 61 percent was 2 percentage points below last year.

Table of Contents

	Page
Stocks in Cold Storage: By Commodity, United States, February 2000	3
Stocks in Cold Storage: By Commodity, Region, and United States, January 31, 2000	6
Stocks in Cold Storage: By Commodity, Region, and United States, February 29, 2000	10
Public General Warehouses: Cold Storage Space Occupied by Region and United States, February 2000	14
Apples in Cold Storage: By State and United States, February 2000	15
Survey and Estimating Procedures, Revision Policy and Reliability	16

Butter Cold Storage Stocks, 1997-2000 United States



**Stocks in Cold Storage: By Commodity,
United States, February 2000**

Commodity	Stocks in All Warehouses			Percent of		Public Warehouse Stocks
	Feb 29, 1999	Jan 31, 2000	Feb 29, 2000	Feb 1999	Jan 2000	Feb 29, 2000
	<i>1,000 Pounds</i>	<i>1,000 Pounds</i>	<i>1,000 Pounds</i>	<i>Percent</i>	<i>Percent</i>	<i>1,000 Lbs</i>
Fresh Fruit						
Apples						
Regular Storage	334,450	568,462	378,804	113	67	
Controlled Atmosphere	3,072,762	3,448,737	2,852,378	93	83	
Total	3,407,212	4,017,199	3,231,182	95	80	38,890
Pears						
Bartlett	4,232	7,149	6,919	163	97	
Other Varieties	173,172	233,886	186,171	108	80	
Total	177,404	241,035	193,090	109	80	2,963
Nuts						
Shelled						
Peanuts	469,556	477,094	502,692	107	105	
Pecans	32,805	24,980	30,048	92	120	
Other Shelled	160,481	143,138	151,344	94	106	
Total	662,842	645,212	684,084	103	106	389,575
In-Shell						
Peanuts	17,130	17,661	22,666	132	128	
Pecans	107,394	236,529	264,814	247	112	
Other In-Shell	9,837	5,567	5,547	56	100	
Total	134,361	259,757	293,027	218	113	99,941
Dairy Products						
Butter, Total	94,971	72,867	92,369	97	127	78,323
(Government Owned)	281	288	383	136	133	
Natural Cheese						
American, Total	464,724	480,143	515,820	111	107	
(Government Owned)	36	70	67	186	96	
Swiss	12,054	9,735	10,487	87	108	
Other Natural Cheese	159,095	178,209	183,069	115	103	
Total	635,873	668,087	709,376	112	106	431,981
Eggs, Frozen						
Whites	1,052	610	571	54	94	
Yolks	730	753	844	116	112	
Whole & Mixed	8,151	10,159	9,174	113	90	
Unclassified	905	576	641	71	111	
Total	10,838	12,098	11,230	104	93	10,559
Frozen Poultry						
Chicken						
Broilers (Whole)	23,406	35,738	40,666	174	114	
Hens	8,760	7,027	7,420	85	106	
Other Chicken	690,314	760,632	745,916	108	98	
Total	722,480	803,397	794,002	110	99	
Turkey						
Whole Turkeys	177,209	122,822	164,091	93	134	
Other Turkey	198,422	189,625	184,872	93	97	
Total	375,631	312,447	348,963	93	112	
Ducks	4,548	4,003	3,710	82	93	
Total	1,102,659	1,119,847	1,146,675	104	102	1,060,708

**Stocks in Cold Storage: By Commodity,
United States, February 2000 (Continued)**

Commodity	Stocks in All Warehouses			Percent of		Public Warehouse Stocks
	Feb 29, 1999	Jan 31, 2000	Feb 29, 2000	Feb 1999	Jan 2000	Feb 29, 2000
	<i>1,000 Pounds</i>	<i>1,000 Pounds</i>	<i>1,000 Pounds</i>	<i>Percent</i>	<i>Percent</i>	<i>1,000 Lbs</i>
Frozen Fruit						
Apples	86,003	78,661	94,847	110	121	
Apricots	8,291	7,980	6,572	79	82	
Blackberries, Total	15,203	19,777	17,579	116	89	
IQF	9,686	12,814	11,483	119	90	
Pails and Tubs	2,170	1,478	1,431	66	97	
Barrels, 400 lbs net	2,167	3,768	3,064	141	81	
Concentrate	1,180	1,717	1,601	136	93	
Blueberries	52,951	52,807	48,457	92	92	
Boysenberries	3,853	4,612	3,895	101	84	
Cherries, Tart (RSP)	100,498	105,384	106,913	106	101	
Cherries, Tart (Juice)	3,172	1,733	1,522	48	88	
Cherries, Sweet	13,796	12,428	12,828	93	103	
Grapes	4,452	4,319	4,024	90	93	
Peaches	50,060	59,980	55,516	111	93	
Raspberries, Black	391	897	618	158	69	
Raspberries, Red, Total	29,766	47,391	40,386	136	85	
IQF	8,381	14,745	13,080	156	89	
Pails and Tubs	8,630	13,185	11,590	134	88	
Barrels, 400 lbs net	9,656	16,658	13,157	136	79	
Concentrate	3,099	2,803	2,559	83	91	
Strawberries, Total	152,180	260,548	248,946	164	96	
Other Frozen Fruit	494,309	681,328	620,963	126	91	
Total	1,014,925	1,337,845	1,263,066	124	94	763,727
Frozen Juice						
Orange Juice Conc. ¹	2,204,231	1,578,419	1,924,354	87	122	
(Gallon Equivalent)	222,740	159,501	194,458			
Other Juice Concentrate	418,567	327,466	325,139	78	99	
Total	2,622,798	1,905,885	2,249,493	86	118	220,910
Frozen Vegetables						
Asparagus	3,852	9,274	9,503	247	102	
Limas, Fordhook	8,108	10,222	8,493	105	83	
Limas, Baby	51,730	44,680	42,784	83	96	
Green Beans, Reg. Cut	133,250	122,759	108,544	81	88	
Green Beans, Fr. Style	39,701	29,977	27,148	68	91	
Broccoli, Spears	38,535	31,312	39,250	102	125	
Broccoli, Chopped & Cut	105,519	108,985	115,704	110	106	
Brussels Sprouts	19,443	40,476	22,977	118	57	
Carrots, Diced	69,165	84,776	75,447	109	89	
Carrots, Other	162,038	195,671	186,395	115	95	
Cauliflower	49,641	64,089	60,990	123	95	
Corn, Cut	309,034	294,272	257,698	83	88	
Corn, Cob	214,925	228,363	200,853	93	88	
Mixed Vegetables	51,657	47,144	44,245	86	94	
Okra	33,001	36,221	32,169	97	89	
Onion Rings	16,309	15,960	16,626	102	104	
Onions, Other	27,280	40,273	42,342	155	105	
Blackeye Peas	6,693	2,415	3,448	52	143	
Green Peas	219,477	234,715	198,729	91	85	
Peas & Carrots Mixed	8,961	8,233	7,913	88	96	
Spinach	81,505	76,701	77,383	95	101	
Squash, Summer/Zucchini	58,718	45,188	41,530	71	92	
Southern Greens	37,242	27,673	30,019	81	108	
Other Vegetables	256,068	306,824	288,117	113	94	
Total	2,001,852	2,106,203	1,938,307	97	92	1,251,988

See footnotes at end of table.

--continued

**Stocks in Cold Storage: By Commodity,
United States, February 2000 (Continued)**

Commodity	Stocks in All Warehouses			Percent of		Public Warehouse Stocks
	Feb 29, 1999	Jan 31, 2000	Feb 29, 2000	Feb 1999	Jan 2000	Feb 29, 2000
	<i>1,000 Pounds</i>	<i>1,000 Pounds</i>	<i>1,000 Pounds</i>	<i>Percent</i>	<i>Percent</i>	<i>1,000 Lbs</i>
Potatoes						
French Fries	1,005,100	912,149	1,006,644	100	110	
Other Frozen	267,800	228,065	243,720	91	107	
Total	1,272,900	1,140,214	1,250,364	98	110	902,445
Meat						
Frozen Beef						
Boneless ²	265,303	258,522	270,700	102	105	
Beef Cuts ³	34,787	47,918	50,866	146	106	
Total	300,090	306,440	321,566	107	105	319,058
(Government Owned)	4,520	6,379	6,683	148	105	
Frozen Pork						
Picnics, Bone-in	12,323	9,383	11,856	96	126	
Hams, Total	91,688	76,249	89,700	98	118	84,233
Bone-in	52,539	41,136	54,610	104	133	53,356
Boneless ⁴	39,149	35,113	35,090	90	100	30,877
Bellies	93,323	43,755	49,936	54	114	
Loins, Total	32,733	28,354	28,912	88	102	25,213
Bone-in	18,303	16,121	17,064	93	106	
Boneless ⁵	14,430	12,233	11,848	82	97	
Ribs ⁶	78,937	70,202	73,408	93	105	
Butts	14,188	11,324	11,534	81	102	
Trimnings ⁷	67,788	55,127	59,494	88	108	
Other ⁸	94,391	87,313	90,264	96	103	
Variety Meats ⁹	43,250	44,884	47,135	109	105	
Unclassified ¹⁰	12,229	16,653	19,953	163	120	
Total	540,850	443,244	482,192	89	109	413,105
(Government Owned)	4,624	6,377	6,004	130	94	
Other						
Veal	4,197	4,885	5,472	130	112	
Lamb & Mutton	12,134	10,362	10,303	85	99	
Total	16,331	15,247	15,775	97	103	15,410
Canned						
Canned Hams	4,874	5,068	5,230	107	103	
Other Canned Meat	974	404	340	35	84	
Total	5,848	5,472	5,570	95	102	2,747
Total	863,119	770,403	825,103	96	107	750,320
Miscellaneous						
Cooler	863,696	779,674	793,829	92	102	486,557
Freezer	1,996,943	1,971,085	2,029,519	102	103	1,958,323
Total	2,860,639	2,750,759	2,823,348	99	103	2,444,880
Commodities						
Stored in Coolers	5,887,236	6,616,436	5,910,158	100	89	1,452,654
Stored in Freezers	10,975,157	10,430,975	10,800,556	98	104	6,994,556
Total	16,862,393	17,047,411	16,710,714	99	98	8,447,210

¹ Adjusted to 42.0 degrees Brix equivalent (9.896 pounds per gallon).

² Includes all boxed boneless beef, such as ground beef, roasts, steaks, loins, strips, rounds, trimmings, etc. Variety meats (edible offal), such as tongues, livers, hearts, kidneys, and other organs removed from slaughtered beef, are included as miscellaneous freezer stocks.

³ Includes all boxed primal beef cuts, bone-in.

⁴ Includes full ham, bone removed and individual muscles separated.

⁵ Includes pork tenderloins.

⁶ Includes spareribs and backribs.

⁷ Includes 42% regular trimmings, 72% special trimmings, boneless picnic meat, jowls, neckbone trimmings, blade, cheek, head, and shank meat, etc. Packaged bacon, sausage, and processed items, such as hot dogs and luncheon meats, are included in miscellaneous cooler or freezer stocks.

⁸ Includes ears, tails, feet, neckbones and snouts.

⁹ Includes tongues, kidneys, livers, stomachs, hearts, chitterlings, salivary glands, and other organs removed from slaughtered hogs.

¹⁰ Includes pork unable to be classified elsewhere in this report.

**Stocks in Cold Storage: By Commodity, Region,
and United States, January 31, 2000**

Commodity	New England	Middle Atlantic	East North Central	West North Central	South Atlantic
	<i>1,000 Pounds</i>	<i>1,000 Pounds</i>	<i>1,000 Pounds</i>	<i>1,000 Pounds</i>	<i>1,000 Pounds</i>
Total Fresh Apples	58,066	482,853	387,832	1,447	233,321
Nuts					
Shelled					
Peanuts		40	207	30	291,459
Pecans ¹		87			7,037
In-Shell					
Pecans ¹		2			61,798
Dairy Products					
Natural Cheese					
American, Total	19,873	33,628	229,483	103,157	687
Other Natural Cheese	587	8,794	99,020	57,424	1,874
Frozen Poultry					
Broilers (Whole)	102	483	723	913	12,058
Hens	1	333	963	953	2,150
Other Chicken	1,791	8,659	18,000	31,315	201,552
Total	1,894	9,475	19,686	33,181	215,760
Whole Turkeys	1,778	6,757	6,791	25,684	24,161
Other Turkey	270	11,115	14,663	60,504	51,207
Total	2,048	17,872	21,454	86,188	75,368
Ducks	33	178	3,314	143	17
Total	3,975	27,525	44,454	119,512	291,145
Frozen Fruit					
Apples	20	25,069	38,773	109	229
Blueberries	10,286	6,793	23,884	203	1,089
Cherries, Tart (RSP)	34	6,672	88,934	59	47
Cherries, Sweet		627	8,867	53	60
Peaches	30	2,666	4,018	42	351
Raspberries, Red	318	1,671	728	113	37
Strawberries, Total	102	3,251	4,554	2,380	918
Other Frozen Fruit	187,316	31,083	336,239	2,046	2,025

See footnotes at end of table.

--continued

**Stocks in Cold Storage: By Commodity, Region,
and United States, January 31, 2000 (continued)**

Commodity	East South Central	West South Central	Mountain	Pacific	US Total
	<i>1,000 Pounds</i>	<i>1,000 Pounds</i>	<i>1,000 Pounds</i>	<i>1,000 Pounds</i>	<i>1,000 Pounds</i>
Total Fresh Apples		8,036	23,661	2,821,983	4,017,199
Nuts					
Shelled					
Peanuts	54,551	130,380	159	268	477,094
Pecans ¹	1,089	16,653		114	24,980
In-Shell					
Pecans ¹	3,710	171,019			236,529
Dairy Products					
Natural Cheese					
American, Total		472	12,144	80,699	480,143
Other Natural Cheese	160	234	297	9,819	178,209
Frozen Poultry					
Broilers (Whole)	1,509	17,502	297	2,151	35,738
Hens	1,215	399	87	926	7,027
Other Chicken	159,413	290,089	2,830	46,983	760,632
Total	162,137	307,990	3,214	50,060	803,397
Whole Turkeys	202	19,724	12,966	24,759	122,822
Other Turkey	1,114	21,469	11,372	17,911	189,625
Total	1,316	41,193	24,338	42,670	312,447
Ducks	1	10	1	306	4,003
Total	163,454	349,193	27,553	93,036	1,119,847
Frozen Fruit					
Apples	150	537	138	13,636	78,661
Blueberries	86	448	133	9,885	52,807
Cherries, Tart (RSP)	50	234	1,877	7,477	105,384
Cherries, Sweet	4	45	497	2,275	12,428
Peaches	81	535	244	52,013	59,980
Raspberries, Red	231	514	13	43,766	47,391
Strawberries, Total	3,564	17,557	3,253	224,969	260,548
Other Frozen Fruit	407	9,753	2,025	110,434	681,328

See footnotes at end of table.

--continued

**Stocks in Cold Storage: By Commodity, Region,
and United States, January 31, 2000 (continued)**

Commodity	New England	Middle Atlantic	East North Central	West North Central	South Atlantic
	<i>1,000 Pounds</i>	<i>1,000 Pounds</i>	<i>1,000 Pounds</i>	<i>1,000 Pounds</i>	<i>1,000 Pounds</i>
Frozen Juice					
Orange Juice Conc. ²	37		2,520	202	1,518,875
Other Juice Concentrate	195	18,805	12,131	1,639	133,501
Frozen Vegetables ³					
Asparagus		500	4,302	32	346
Limas, Fordhook		504	268	178	2,676
Limas, Baby		4,471	1,248	679	9,199
Green Beans, Reg. Cut		18,964	30,194	1,600	3,147
Green Beans, Fr. Style		5,340	4,709	161	386
Broccoli, Spears		4,646	254	1,396	2,654
Broccoli, Chopped & Cut		5,669	8,340	3,591	6,089
Brussels Sprouts		2,223	321	657	437
Carrots, Diced		4,923	18,786	848	4,799
Carrots, Other		10,835	10,240	2,051	8,140
Cauliflower		2,499	3,063	2,179	1,423
Corn, Cut		33,997	26,283	16,106	6,274
Corn, Cob		11,046	14,508	26,463	2,292
Mixed Vegetables		2,213	4,529	1,466	2,264
Okra		1,345	150	927	10,118
Onion Rings		1,050	9,632	1,712	757
Onions, Other		3,805	3,784	353	1,481
Blackeye Peas		247	260	17	890
Green Peas		30,498	21,083	9,656	6,371
Peas & Carrots Mixed		469	434	31	467
Spinach		9,724	1,124	499	6,290
Squash, Summer/Zucchini		3,280	12,077	574	6,240
Southern Greens		2,980	20	22	10,722
Other Vegetables		32,723	21,715	14,149	32,133
Potatoes					
French Fries	36,663	34,496	50,633	113,464	22,167
Other Frozen	6,088	10,551	29,333	7,002	4,606
Meat					
Frozen Beef					
Boneless	8,100	30,674	33,451	47,654	21,602
Beef Cuts	849	1,190	4,178	8,699	4,140
Frozen Pork					
Ribs	477	1,390	18,099	35,491	6,950
Trimming	119	1,302	14,642	28,920	7,369
Other	4,043	3,321	17,161	28,109	7,103
Other					
Veal	187	384	2,031	618	27
Lamb & Mutton	346	2,650	1,191	555	443

See footnotes at end of table.

--continued

**Stocks in Cold Storage: By Commodity, Region,
and United States, January 31, 2000 (continued)**

Commodity	East South Central	West South Central	Mountain	Pacific	US Total
	<i>1,000 Pounds</i>	<i>1,000 Pounds</i>	<i>1,000 Pounds</i>	<i>1,000 Pounds</i>	<i>1,000 Pounds</i>
Frozen Juice					
Orange Juice Concentrate	372	2,803	1,905	51,705	1,578,419
Other Juice Concentrate	1,603	17,088	318	142,186	327,466
Frozen Vegetables ³					
Asparagus		550	121	3,423	9,274
Limas, Fordhook		307	420	5,869	10,222
Limas, Baby		583	8,192	20,308	44,680
Green Beans, Reg. Cut		1,536	86	67,232	122,759
Green Beans, Fr. Style		305	65	19,011	29,977
Broccoli, Spears		14,907	308	7,147	31,312
Broccoli, Chopped & Cut		31,211	2,430	51,655	108,985
Brussels Sprouts		739	122	35,977	40,476
Carrots, Diced		1,905	242	53,273	84,776
Carrots, Other		8,578	1,633	154,194	195,671
Cauliflower		18,638	1,552	34,735	64,089
Corn, Cut		3,510	4,501	203,601	294,272
Corn, Cob		2,779	9	171,266	228,363
Mixed Vegetables		7,462	60	29,150	47,144
Okra		23,238		443	36,221
Onion Rings		1,339	1,070	400	15,960
Onions, Other		737	3,256	26,857	40,273
Blackeye Peas		852		149	2,415
Green Peas		3,044	13,496	150,567	234,715
Peas & Carrots Mixed		150	20	6,662	8,233
Spinach		13,909	12,310	32,845	76,701
Squash, Summer/Zucchini		6,181	537	16,299	45,188
Southern Greens		13,242	133	554	27,673
Other Vegetables		29,387	3,726	172,991	306,824
Potatoes					
French Fries	1,311	9,090	213,403	430,922	912,149
Other Frozen	846	7,727	47,287	114,625	228,065
Meat					
Frozen Beef					
Boneless ⁴	2,123	49,556	6,061	59,301	258,522
Beef Cuts ⁵	320	11,013	5,734	11,795	47,918
Frozen Pork					
Ribs ⁶	2,890	1,644	65	3,196	70,202
Trimmings ⁷	260	1,937	210	368	55,127
Other ⁸	8,598	12,971	211	5,796	87,313
Other					
Veal		294	37	1,307	4,885
Lamb & Mutton	79	452	710	3,936	10,362

¹ East North Central combined with South Atlantic. Mountain and West North Central combined with West South Central.

² Middle Atlantic combined with South Atlantic.

³ New England combined with Middle Atlantic. East South Central combined with South Atlantic.

⁴ Includes all boxed boneless beef, such as ground beef, roasts, steaks, loins, strips, rounds, trimmings, etc. Variety meats (edible offal), such as tongues, livers, hearts, kidneys, and other organs removed from slaughtered beef, are included as miscellaneous freezer stocks.

⁵ Includes all boxed primal beef cuts, bone-in.

⁶ Includes spareribs and backribs.

⁷ Includes 42% regular trimmings, 72% special trimmings, boneless picnic meat, jowls, neckbone trimmings, blade, cheek, head, and shank meat, etc. Packaged bacon, sausage, and processed items, such as hot dogs and luncheon meats, are included in miscellaneous cooler or freezer stocks.

⁸ Includes ears, tails, feet, neckbones and snouts.

**Stocks in Cold Storage: By Commodity, Region,
and United States, February 29, 2000**

Commodity	New England	Middle Atlantic	East North Central	West North Central	South Atlantic
	<i>1,000 Pounds</i>	<i>1,000 Pounds</i>	<i>1,000 Pounds</i>	<i>1,000 Pounds</i>	<i>1,000 Pounds</i>
Total Fresh Apples	44,944	404,286	285,305	437	182,417
Nuts					
Shelled					
Peanuts		42	221	33	307,614
Pecans ¹		117			9,306
In-Shell					
Pecans ¹					66,837
Dairy Products					
Natural Cheese					
American, Total	19,953	41,487	249,453	111,269	479
Other Natural Cheese	586	9,171	99,848	60,906	943
Frozen Poultry					
Broilers (Whole)	101	369	688	904	13,291
Hens	1	317	1,032	879	1,877
Other Chicken	1,773	9,529	17,316	29,113	209,145
Total	1,875	10,215	19,036	30,896	224,313
Whole Turkeys	1,769	8,999	9,822	30,489	32,010
Other Turkey	237	11,799	13,435	53,247	53,526
Total	2,006	20,798	23,257	83,736	85,536
Ducks	34	163	3,233	11	10
Total	3,915	31,176	45,526	114,643	309,859
Frozen Fruit					
Apples	33	30,071	48,165	123	330
Blueberries	10,028	4,814	23,581	180	985
Cherries, Tart (RSP)	31	5,550	92,599	54	62
Cherries, Sweet		569	9,387	81	8
Peaches	28	2,459	4,658	31	323
Raspberries, Red	267	1,610	876	106	448
Strawberries, Total	70	3,278	4,397	2,607	1,014
Other Frozen Fruit	170,881	29,193	311,529	969	2,452

See footnotes at end of table.

--continued

**Stocks in Cold Storage: By Commodity, Region,
and United States, February 29, 2000 (continued)**

Commodity	East South Central	West South Central	Mountain	Pacific	US Total
	<i>1,000 Pounds</i>	<i>1,000 Pounds</i>	<i>1,000 Pounds</i>	<i>1,000 Pounds</i>	<i>1,000 Pounds</i>
Total Fresh Apples		7,173	8,863	2,297,757	3,231,182
Nuts					
Shelled					
Peanuts	60,699	133,636	153	294	502,692
Pecans ¹	1,421	19,071		133	30,048
In-Shell					
Pecans ¹	3,614	194,363			264,814
Dairy Products					
Natural Cheese					
American, Total		399	12,852	79,928	515,820
Other Natural Cheese	203	333	271	10,808	183,069
Frozen Poultry					
Broilers (Whole)	4,008	18,056	355	2,894	40,666
Hens	1,123	1,075	88	1,028	7,420
Other Chicken	147,423	282,933	2,972	45,712	745,916
Total	152,554	302,064	3,415	49,634	794,002
Whole Turkeys	520	39,754	10,672	30,056	164,091
Other Turkey	1,134	25,304	10,818	15,372	184,872
Total	1,654	65,058	21,490	45,428	348,963
Ducks	1	7	1	250	3,710
Total	154,209	367,129	24,906	95,312	1,146,675
Frozen Fruit					
Apples	190	647	143	15,145	94,847
Blueberries	93	457	102	8,217	48,457
Cherries, Tart (RSP)	82	179	1,728	6,628	106,913
Cherries, Sweet	3	24	618	2,138	12,828
Peaches	92	513	231	47,181	55,516
Raspberries, Red	77	428	15	36,559	40,386
Strawberries, Total	3,423	27,439	2,657	204,061	248,946
Other Frozen Fruit	290	9,890	2,745	93,014	620,963

See footnotes at end of table.

--continued

**Stocks in Cold Storage: By Commodity, Region,
and United States, February 29, 2000 (continued)**

Commodity	New England	Middle Atlantic	East North Central	West North Central	South Atlantic
	<i>1,000 Pounds</i>	<i>1,000 Pounds</i>	<i>1,000 Pounds</i>	<i>1,000 Pounds</i>	<i>1,000 Pounds</i>
Frozen Juice					
Orange Juice Conc. ²	24		2,898	171	1,851,619
Other Juice Concentrate	60	18,910	11,164	1,307	134,003
Frozen Vegetables ³					
Asparagus		431	5,024	10	402
Limas, Fordhook		437	233	171	2,442
Limas, Baby		3,941	1,233	641	10,128
Green Beans, Reg. Cut		16,395	26,554	1,105	2,686
Green Beans, Fr. Style		6,322	4,507	126	355
Broccoli, Spears		5,149	344	1,234	2,560
Broccoli, Chopped & Cut		8,028	8,591	3,158	6,960
Brussels Sprouts		2,015	300	607	513
Carrots, Diced		4,083	17,604	849	4,169
Carrots, Other		9,757	10,301	1,266	6,275
Cauliflower		2,682	2,978	2,097	1,321
Corn, Cut		28,350	24,238	13,623	5,977
Corn, Cob		9,678	13,150	21,806	2,060
Mixed Vegetables		2,318	4,249	1,330	2,548
Okra		1,287	154	1,251	8,107
Onion Rings		957	9,774	2,094	944
Onions, Other		3,937	3,893	420	1,243
Blackeye Peas		207	263	15	1,569
Green Peas		25,779	19,738	9,246	5,278
Peas & Carrots Mixed		692	714	52	422
Spinach		7,648	1,295	526	6,220
Squash, Summer/Zucchini		3,200	10,799	714	5,663
Southern Greens		2,100	22	21	11,023
Other Vegetables		28,606	19,356	15,241	31,624
Potatoes					
French Fries	41,198	38,810	63,817	124,471	21,494
Other Frozen	6,850	9,830	31,462	7,323	4,961
Meat					
Frozen Beef					
Boneless ⁴	5,304	33,008	28,612	58,535	26,933
Beef Cuts ⁵	526	1,317	4,656	12,948	2,231
Frozen Pork					
Ribs ⁶	509	1,285	19,652	33,808	8,159
Trimmings ⁷	125	1,533	15,106	32,776	7,538
Other ⁸	2,554	3,398	19,511	30,017	8,053
Other					
Veal	179	378	1,913	807	28
Lamb & Mutton	384	2,822	1,282	451	467

See footnotes at end of table.

--continued

**Stocks in Cold Storage: By Commodity, Region,
and United States, February 29, 2000 (continued)**

Commodity	East South Central	West South Central	Mountain	Pacific	US Total
	<i>1,000 Pounds</i>	<i>1,000 Pounds</i>	<i>1,000 Pounds</i>	<i>1,000 Pounds</i>	<i>1,000 Pounds</i>
Frozen Juice					
Orange Juice Concentrate	339	4,285	2,171	62,847	1,924,354
Other Juice Concentrate	1,508	17,888	306	139,993	325,139
Frozen Vegetables ³					
Asparagus		578	113	2,945	9,503
Limas, Fordhook		269	371	4,570	8,493
Limas, Baby		538	7,175	19,128	42,784
Green Beans, Reg. Cut		1,234	77	60,493	108,544
Green Beans, Fr. Style		320	72	15,446	27,148
Broccoli, Spears		20,678	366	8,919	39,250
Broccoli, Chopped & Cut		31,086	1,907	55,974	115,704
Brussels Sprouts		1,008	123	18,411	22,977
Carrots, Diced		1,616	174	46,952	75,447
Carrots, Other		17,242	1,584	139,970	186,395
Cauliflower		19,171	1,442	31,299	60,990
Corn, Cut		3,174	3,390	178,946	257,698
Corn, Cob		2,429	4	151,726	200,853
Mixed Vegetables		6,215	69	27,516	44,245
Okra		20,796		574	32,169
Onion Rings		1,320	1,125	412	16,626
Onions, Other		680	3,377	28,792	42,342
Blackeye Peas		1,231		163	3,448
Green Peas		2,546	11,663	124,479	198,729
Peas & Carrots Mixed		109	15	5,909	7,913
Spinach		18,852	14,117	28,725	77,383
Squash, Summer/Zucchini		5,173	565	15,416	41,530
Southern Greens		15,988	140	725	30,019
Other Vegetables		42,321	1,997	148,972	288,117
Potatoes					
French Fries	1,791	8,287	233,294	473,482	1,006,644
Other Frozen	817	8,804	48,824	124,849	243,720
Meat					
Frozen Beef					
Boneless ⁴	2,821	48,174	7,586	59,727	270,700
Beef Cuts ⁵	529	10,948	7,202	10,509	50,866
Frozen Pork					
Ribs ⁶	4,137	2,293	69	3,496	73,408
Trimmings ⁷	264	1,657	234	261	59,494
Other ⁸	8,078	12,017	260	6,376	90,264
Other					
Veal		541	17	1,609	5,472
Lamb & Mutton	13	375	513	3,996	10,303

¹ East North Central combined with South Atlantic. Mountain and West North Central Combined with West South Central.

² Middle Atlantic combined with South Atlantic.

³ New England combined with Middle Atlantic. East South Central combined with South Atlantic.

⁴ Includes all boxed boneless beef, such as ground beef, roasts, steaks, loins, strips, rounds, trimmings, etc. Variety meats (edible offal), such as tongues, livers, hearts, kidneys, and other organs removed from slaughtered beef, are included as miscellaneous freezer stocks.

⁵ Includes all boxed primal beef cuts, bone-in.

⁶ Includes spareribs and backribs.

⁷ Includes 42% regular trimmings, 72% special trimmings, boneless picnic meat, jowls, neckbone trimmings, blade, cheek, head, and shank meat, etc. Packaged bacon, sausage, and processed items, such as hot dogs and luncheon meats, are included in miscellaneous cooler or freezer stocks.

⁸ Includes ears, tails, feet, neckbones and snouts.

**Public General Warehouses: Cold Storage Space Occupied
by Region and United States, February 2000**

Region	Cooler				Freezer			
	Usable Space	Usable Space Occupied			Usable Space	Usable Space Occupied		
		Feb 29 2000	Feb 29 1999	Jan 31 2000		Feb 29 2000	Feb 29 1999	Jan 31 2000
	<i>1,000 Cu Ft</i>	<i>Percent</i>	<i>Percent</i>	<i>Percent</i>	<i>1,000 Cu Ft</i>	<i>Percent</i>	<i>Percent</i>	<i>Percent</i>
New England	2,450	63	54	59	20,083	67	69	68
Middle Atlantic	34,995	75	60	60	88,534	79	76	81
E. North Central	49,007	50	49	47	168,163	59	53	50
W. North Central	44,629	43	33	31	138,616	58	50	55
South Atlantic	50,968	44	51	51	165,301	53	60	56
E. South Central	8,962	49	52	54	64,453	48	48	47
W. South Central	20,780	55	37	42	132,046	69	62	67
Mountain	6,033	84	67	66	51,055	69	49	45
Pacific	40,158	44	35	38	264,175	67	70	70
US	257,982	52	46	46	1,092,426	63	60	61

Cold Storage Regions



**Apples in Cold Storage: By State
and United States, February 2000**

State	All Warehouses		
	Feb 29, 1999	Jan 31, 2000	Feb 29, 2000
	<i>1,000 Pounds</i>	<i>1,000 Pounds</i>	<i>1,000 Pounds</i>
CA	71,398	102,835	62,926
MI	177,725	357,336	264,771
N ENG	15,809	58,066	44,944
NY	195,426	292,488	244,230
OH	6,040	15,858	11,460
OR	21,923	47,556	19,916
PA	122,388	190,109	159,899
VA	97,705	137,210	112,789
WA	2,597,803	2,671,592	2,214,915
WV	34,033	61,288	46,910
Other States	66,962	82,861	48,422
US	3,407,212	4,017,199	3,231,182

Survey Procedures: Questionnaires are mailed about the 24th of each month to all operators on the list of approximately 1,400 public and private cold storage warehouses. In addition, apple data are obtained from special surveys and other sources (State Departments of Agriculture, U.S. Apple Association, etc.). All survey data represent stocks as of the end of the month.

Data are collected from warehouses artificially cooled to a temperature of 50 degrees Fahrenheit or lower, and whose food products are normally stored for 30 days or more. All food items in these facilities are reported regardless of the number of days stored at the time of the report. Also included are specialized storage facilities meeting the 30 day requirement, such as fruit houses, dairy manufacturing plants, frozen fruit, fruit juice, and vegetable processors, and poultry and meat packing plants. Excluded are stocks in space maintained by wholesalers, jobbers, distributors, chain stores, locker plants containing individual lockers, meat packer branch houses, and frozen food processors whose entire inventories are turned over more than once a month.

Estimating Procedures: Data for reporting firms are added to estimates for non-reporting firms to obtain regional and National totals. Estimates for non-reporting firms are obtained by multiplying the previous month's figure by a percent change from the previous month. The percent change is calculated for each item from totals of the current and previous month summed from firms that reported both months.

Revision Policy: Data are revised the following month based on late reports or corrected data. Final figures are published in the annual summary in February of the following year.

Reliability: Reports are received from 900 firms each month which represent about 70 percent of the total capacity. Firms that are not on the list or firms who have never reported are not represented in the data. Monthly data can vary due to different firms reporting month to month. Survey data are also subject to non-sampling errors such as omissions and mistakes in reporting and in processing the data. While these errors cannot be measured directly, they are minimized by carefully reviewing all reported data for consistency and reasonableness.

The next "Cold Storage" report will be released at 3 p.m. ET on April 20, 2000.

The United States Department of Agriculture (USDA) prohibits discrimination in all its programs on the basis of race, color, national origin, gender, religion, age, disability, political beliefs, sexual orientation, and marital or family status. (Not all prohibited bases apply to all programs.) Persons with disabilities who require alternative means for communication of program information (braille, large print, audiotape, etc.) should contact the USDA's TARGET Center at 202-720-2600 (voice and TDD).

To file a complaint of discrimination, write USDA, Director, Office of Civil Rights, Room 326-W, Whitten Building, 14th and Independence Avenue, SW, Washington, D.C., 20250-9410, or call 202-720-5964 (voice or TDD). USDA is an equal opportunity provider and employer.

ACCESS TO REPORTS!!

For your convenience, there are several ways to obtain NASS reports, data products, and services:

INTERNET ACCESS

All NASS reports are available free of charge on the worldwide Internet. For access, connect to the Internet and go to the NASS Home Page at: <http://www.usda.gov/nass/>. Select "Today's Reports" or Publications and then Reports by Calendar or Publications and then Search, by Title or Subject.

E-MAIL SUBSCRIPTION

There are two options for subscribing via e-mail. All NASS reports are available by subscription free of charge direct to your e-mail address. 1) Starting with the NASS Home Page at <http://www.usda.gov/nass/>, click on **Publications**, then click on the **Subscribe by E-mail** button which takes you to the page describing e-mail delivery of reports. Finally, click on **Go to the Subscription Page** and follow the instructions. 2) If you do NOT have Internet access, send an e-mail message to: usda-reports@usda.mannlib.cornell.edu. In the body of the message type the word: **list**.

AUTOFAX ACCESS

NASSFax service is available for some reports from your fax machine. Please call 202-720-2000, using the handset attached to your fax. Respond to the voice prompts. Document 0411 is a list of available reports.

PRINTED REPORTS OR DATA PRODUCTS

CALL OUR TOLL-FREE ORDER DESK: 800-999-6779 (U.S. and Canada)
Other areas, please call 703-834-0125 FAX: 703-834-0110
(Visa, MasterCard, check, or money order acceptable for payment.)

ASSISTANCE

For **assistance** with general agricultural statistics or further information about NASS or its products or services, contact the **Agricultural Statistics Hotline** at **800-727-9540**, 7:30 a.m. to 4:00 p.m. ET, or e-mail: nass@nass.usda.gov.