



Cold Storage

Released April 20, 2000, by the National Agricultural Statistics Service (NASS), Agricultural Statistics Board, U.S. Department of Agriculture. For information on "Cold Storage" call Linda Simpson at (202) 720-8784, office hours 7:00 a.m. to 4:30 p.m. ET.

HIGHLIGHTS

Frozen food stocks in refrigerated warehouses on March 31, 2000 were greater than year earlier levels for fruit, chicken, and potatoes. March 2000 stocks of chicken, at 810 million pounds, broke the previous record March high of 794 million pounds set in 1999. Cooler stocks of pecans and peanuts were also higher than a year earlier.

Total red meat supplies in freezers were 5 percent above February 2000 but were 3 percent below March 1999. Frozen pork stocks were 4 percent above last month but were 9 percent below last year. Stocks of pork bellies increased 20 percent from last month but were 43 percent below March 1999 stocks.

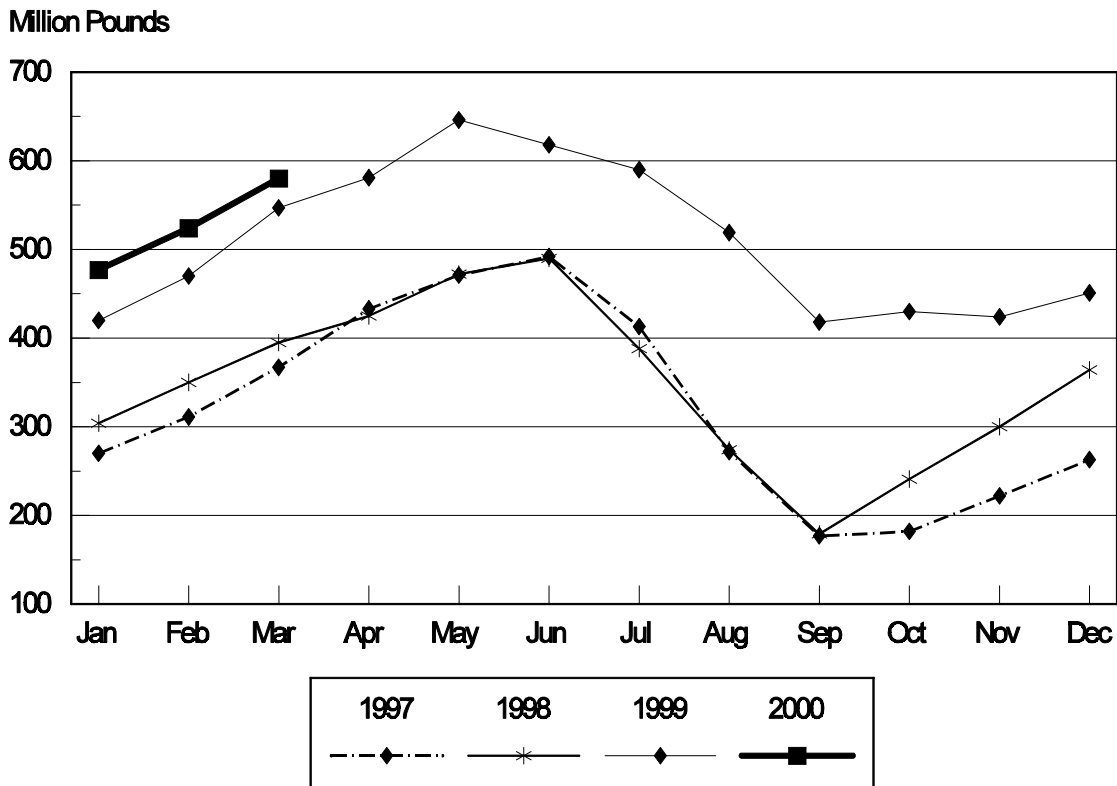
Total frozen poultry supplies were up 6 percent from last month and were 4 percent above last year's level. Total stocks of chicken were up 2 percent from last month and were 3 percent above March 1999. Total pounds of turkey in freezers increased 15 percent from last month and were 6 percent above last year.

Public cooler occupancy was at 45 percent of capacity, down 9 points from last year. Public freezer occupancy at 59 percent was 3 percentage points below last year.

Table of Contents

	Page
Stocks in Cold Storage: By Commodity, United States, March 2000	3
Stocks in Cold Storage: By Commodity, Region, and United States, February 29, 2000	6
Stocks in Cold Storage: By Commodity, Region, and United States, March 31, 2000	10
Public General Warehouses: Cold Storage Space Occupied by Region and United States, March 2000	14
Apples in Cold Storage: By State and United States, March 2000	15
Survey and Estimating Procedures, Revision Policy and Reliability	16

Shelled Peanuts Cold Storage Stocks, 1997-2000 United States



**Stocks in Cold Storage: By Commodity,
United States, March 2000**

Commodity	Stocks in All Warehouses			Percent of		Public Warehouse Stocks
	Mar 31, 1999	Feb 29, 2000	Mar 31, 2000	Mar 1999	Feb 2000	Mar 31, 2000
	<i>1,000 Pounds</i>	<i>1,000 Pounds</i>	<i>1,000 Pounds</i>	<i>Percent</i>	<i>Percent</i>	<i>1,000 Lbs</i>
Fresh Fruit						
Apples						
Regular Storage	179,170	378,458	226,443	126	60	
Controlled Atmosphere	2,428,114	2,852,378	2,241,156	92	79	
Total	2,607,284	3,230,836	2,467,599	95	76	32,456
Pears						
Bartlett	2,718	4,519	2,986	110	66	
Other Varieties	117,552	186,171	130,340	111	70	
Total	120,270	190,690	133,326	111	70	552
Nuts						
Shelled						
Peanuts	546,863	524,267	580,167	106	111	
Pecans	33,278	29,945	32,653	98	109	
Other Shelled	137,095	151,064	163,454	119	108	
Total	717,236	705,276	776,274	108	110	435,756
In-Shell						
Peanuts	20,728	24,809	28,266	136	114	
Pecans	91,808	262,853	267,272	291	102	
Other In-Shell	10,235	5,445	5,479	54	101	
Total	122,771	293,107	301,017	245	103	105,430
Dairy Products						
Butter, Total	108,441	88,899	97,206	90	109	92,826
(Government Owned)	181	383	339	187	89	
Natural Cheese						
American, Total	467,663	515,338	530,151	113	103	
(Government Owned)	35	67	57	163	85	
Swiss	13,538	10,487	10,365	77	99	
Other Natural Cheese	163,850	182,525	186,740	114	102	
Total	645,051	708,350	727,256	113	103	444,772
Eggs, Frozen						
Whites	849	570	616	73	108	
Yolks	573	797	672	117	84	
Whole & Mixed	6,714	7,213	6,193	92	86	
Unclassified	1,102	678	597	54	88	
Total	9,238	9,258	8,078	87	87	7,600
Frozen Poultry						
Chicken						
Broilers (Whole)	24,968	41,040	38,074	152	93	
Hens	10,915	7,192	5,999	55	83	
Other Chicken	751,818	745,709	766,203	102	103	
Total	787,701	793,941	810,276	103	102	
Turkey						
Whole Turkeys	184,809	161,543	192,353	104	119	
Other Turkey	190,136	185,730	206,088	108	111	
Total	374,945	347,273	398,441	106	115	
Ducks	5,868	3,705	3,924	67	106	
Total	1,168,514	1,144,919	1,212,641	104	106	1,111,270

**Stocks in Cold Storage: By Commodity,
United States, March 2000 (Continued)**

Commodity	Stocks in All Warehouses			Percent of		Public Warehouse Stocks
	Mar 31, 1999	Feb 29, 2000	Mar 31, 2000	Mar 1999	Feb 2000	Mar 31, 2000
	<i>1,000 Pounds</i>	<i>1,000 Pounds</i>	<i>1,000 Pounds</i>	<i>Percent</i>	<i>Percent</i>	<i>1,000 Lbs</i>
Frozen Fruit						
Apples	89,698	86,832	87,296	97	101	
Apricots	6,137	6,540	5,888	96	90	
Blackberries, Total	13,718	17,411	15,987	117	92	
IQF	8,880	11,312	10,667	120	94	
Pails and Tubs	1,985	1,430	1,299	65	91	
Barrels, 400 lbs net	1,333	3,061	2,216	166	72	
Concentrate	1,520	1,608	1,805	119	112	
Blueberries	48,402	44,807	38,304	79	85	
Boysenberries	3,270	3,889	3,946	121	101	
Cherries, Tart (RSP)	90,498	97,224	85,032	94	87	
Cherries, Tart (Juice)	1,945	1,601	1,074	55	67	
Cherries, Sweet	12,193	12,204	11,001	90	90	
Grapes	3,742	4,053	3,697	99	91	
Peaches	39,795	54,484	41,472	104	76	
Raspberries, Black	282	595	564	200	95	
Raspberries, Red, Total	23,155	40,150	37,435	162	93	
IQF	7,507	12,837	13,342	178	104	
Pails and Tubs	6,584	11,549	10,497	159	91	
Barrels, 400 lbs net	7,072	13,161	11,077	157	84	
Concentrate	1,992	2,603	2,519	126	97	
Strawberries, Total	127,277	248,173	222,625	175	90	
Pkgs. 20 Oz. & Less	94,652		125,534	133		
Pkgs. Over 20 Oz.	32,625		97,091	298		
Other Frozen Fruit	449,526	625,762	551,173	123	88	
Total	909,638	1,243,725	1,105,494	122	89	668,860
Frozen Juice						
Orange Juice Conc. ¹	2,191,321	1,901,318	1,872,798	85	98	
(Gallon Equivalent)	221,435	192,130	189,248			
Other Juice Concentrate	450,860	294,383	315,119	70	107	
Total	2,642,181	2,195,701	2,187,917	83	100	217,210
Frozen Vegetables						
Asparagus	3,310	8,430	11,519	348	137	
Limas, Fordhook	6,829	8,803	7,421	109	84	
Limas, Baby	48,754	41,642	36,999	76	89	
Green Beans, Reg. Cut	120,682	109,554	90,600	75	83	
Green Beans, Fr. Style	38,735	26,974	21,952	57	81	
Broccoli, Spears	43,389	39,299	37,014	85	94	
Broccoli, Chopped & Cut	122,520	115,462	115,884	95	100	
Brussels Sprouts	16,086	23,416	18,917	118	81	
Carrots, Diced	58,225	74,792	66,757	115	89	
Carrots, Other	147,903	186,187	173,887	118	93	
Cauliflower	49,511	61,017	50,601	102	83	
Corn, Cut	259,811	258,056	211,628	81	82	
Corn, Cob	189,508	204,131	169,650	90	83	
Mixed Vegetables	48,771	44,284	43,741	90	99	
Okra	25,008	32,177	31,473	126	98	
Onion Rings	15,234	16,625	14,430	95	87	
Onions, Other	27,972	43,562	45,584	163	105	
Blackeye Peas	5,934	3,499	3,409	57	97	
Green Peas	180,980	203,924	159,525	88	78	
Peas & Carrots Mixed	9,554	7,889	7,050	74	89	
Spinach	105,346	77,098	78,459	74	102	
Squash, Summer/Zucchini	53,341	41,389	37,970	71	92	
Southern Greens	39,661	30,001	27,673	70	92	
Other Vegetables	238,942	289,058	266,789	112	92	
Total	1,856,006	1,947,269	1,728,932	93	89	1,105,711

See footnotes at end of table.

--continued

**Stocks in Cold Storage: By Commodity,
United States, March 2000 (Continued)**

Commodity	Stocks in All Warehouses			Percent of		Public Warehouse Stocks
	Mar 31, 1999	Feb 29, 2000	Mar 31, 2000	Mar 1999	Feb 2000	Mar 31, 2000
	<i>1,000 Pounds</i>	<i>1,000 Pounds</i>	<i>1,000 Pounds</i>	<i>Percent</i>	<i>Percent</i>	<i>1,000 Lbs</i>
Potatoes						
French Fries	1,014,544	1,026,138	1,026,796	101	100	
Other Frozen	264,233	243,371	270,422	102	111	
Total	1,278,777	1,269,509	1,297,218	101	102	933,896
Meat						
Frozen Beef						
Boneless ²	269,606	273,255	281,496	104	103	
Beef Cuts ³	39,583	47,274	55,006	139	116	
Total	309,189	320,529	336,502	109	105	333,913
(Government Owned)	4,235	6,609	4,877	115	74	
Frozen Pork						
Picnics, Bone-in	8,569	11,721	10,029	117	86	
Hams, Total	77,406	89,150	91,411	118	103	84,793
Bone-in	40,157	54,120	49,019	122	91	46,898
Boneless ⁴	37,249	35,030	42,392	114	121	37,895
Bellies	106,194	49,936	60,140	57	120	
Loins, Total	33,265	28,642	24,637	74	86	21,516
Bone-in	15,872	17,065	14,190	89	83	
Boneless ⁵	17,393	11,577	10,447	60	90	
Ribs ⁶	84,874	73,173	75,028	88	103	
Butts	17,651	11,534	11,290	64	98	
Trimming ⁷	65,268	59,156	59,796	92	101	
Other ⁸	99,555	89,714	91,579	92	102	
Variety Meats ⁹	47,223	47,724	52,138	110	109	
Unclassified ¹⁰	12,832	19,981	25,442	198	127	
Total	552,837	480,731	501,490	91	104	427,054
(Government Owned)	5,236	5,989	5,141	98	86	
Other						
Veal	4,416	5,535	4,652	105	84	
Lamb & Mutton	12,374	10,303	11,794	95	114	
Total	16,790	15,838	16,446	98	104	16,031
Canned						
Canned Hams	3,802	5,181	5,023	132	97	
Other Canned Meat	852	328	451	53	138	
Total	4,654	5,509	5,474	118	99	2,722
Total	883,470	822,607	859,912	97	105	779,720
Miscellaneous						
Cooler	738,679	767,772	731,702	99	95	458,371
Freezer	1,865,503	2,033,378	2,109,194	113	104	2,040,151
Total	2,604,182	2,801,150	2,840,896	109	101	2,498,522
Commodities						
Stored in Coolers	4,955,945	5,901,540	5,142,648	104	87	1,480,059
Stored in Freezers	10,717,114	10,749,756	10,601,118	99	99	6,954,522
Total	15,673,059	16,651,296	15,743,766	100	95	8,434,581

¹ Adjusted to 42.0 degrees Brix equivalent (9.896 pounds per gallon).

² Includes all boxed boneless beef, such as ground beef, roasts, steaks, loins, strips, rounds, trimmings, etc. Variety meats (edible offal), such as tongues, livers, hearts, kidneys, and other organs removed from slaughtered beef, are included as miscellaneous freezer stocks.

³ Includes all boxed primal beef cuts, bone-in.

⁴ Includes full ham, bone removed and individual muscles separated.

⁵ Includes pork tenderloins.

⁶ Includes spareribs and backribs.

⁷ Includes 42% regular trimmings, 72% special trimmings, boneless picnic meat, jowls, neckbone trimmings, blade, cheek, head, and shank meat, etc. Packaged bacon, sausage, and processed items, such as hot dogs and luncheon meats, are included in miscellaneous cooler or freezer stocks.

⁸ Includes ears, tails, feet, neckbones and snouts.

⁹ Includes tongues, kidneys, livers, stomachs, hearts, chitterlings, salivary glands, and other organs removed from slaughtered hogs.

¹⁰ Includes pork unable to be classified elsewhere in this report.

**Stocks in Cold Storage: By Commodity, Region,
and United States, February 29, 2000**

Commodity	New England	Middle Atlantic	East North Central	West North Central	South Atlantic
	<i>1,000 Pounds</i>	<i>1,000 Pounds</i>	<i>1,000 Pounds</i>	<i>1,000 Pounds</i>	<i>1,000 Pounds</i>
Total Fresh Apples	44,944	405,851	285,307	437	182,216
Nuts					
Shelled					
Peanuts		42	221	33	315,246
Pecans ¹		117			9,287
In-Shell					
Pecans ¹					66,837
Dairy Products					
Natural Cheese					
American, Total	19,953	41,456	249,213	111,567	479
Other Natural Cheese	586	9,251	99,766	60,936	943
Frozen Poultry					
Broilers (Whole)	101	377	711	904	13,292
Hens	1	67	1,032	879	1,877
Other Chicken	1,773	9,518	17,310	29,114	209,145
Total	1,875	9,962	19,053	30,897	224,314
Whole Turkeys	1,769	9,005	9,802	31,678	32,007
Other Turkey	237	11,808	13,333	54,154	53,526
Total	2,006	20,813	23,135	85,832	85,533
Ducks	34	158	3,233	11	10
Total	3,915	30,933	45,421	116,740	309,857
Frozen Fruit					
Apples	33	30,045	40,368	124	330
Blueberries	10,028	4,834	19,922	180	986
Cherries, Tart (RSP)	31	5,550	82,887	54	62
Cherries, Sweet		569	8,761	81	9
Peaches	28	2,472	3,693	29	323
Raspberries, Red	267	1,610	682	105	449
Strawberries, Total	70	3,289	4,156	2,596	1,070
Other Frozen Fruit	172,909	29,293	313,038	966	3,252

See footnotes at end of table.

--continued

**Stocks in Cold Storage: By Commodity, Region,
and United States, February 29, 2000 (continued)**

Commodity	East South Central	West South Central	Mountain	Pacific	US Total
	<i>1,000 Pounds</i>	<i>1,000 Pounds</i>	<i>1,000 Pounds</i>	<i>1,000 Pounds</i>	<i>1,000 Pounds</i>
Total Fresh Apples		7,173	8,863	2,296,045	3,230,836
Nuts					
Shelled					
Peanuts	60,699	147,581	148	297	524,267
Pecans ¹	1,421	18,988		132	29,945
In-Shell					
Pecans ¹	3,614	192,402			262,853
Dairy Products					
Natural Cheese					
American, Total		399	10,852	81,419	515,338
Other Natural Cheese	203	371	260	10,209	182,525
Frozen Poultry					
Broilers (Whole)	4,008	18,106	646	2,895	41,040
Hens	1,123	1,110	88	1,015	7,192
Other Chicken	147,423	282,770	3,101	45,555	745,709
Total	152,554	301,986	3,835	49,465	793,941
Whole Turkeys	520	39,599	13,386	23,777	161,543
Other Turkey	1,134	25,364	10,802	15,372	185,730
Total	1,654	64,963	24,188	39,149	347,273
Ducks	1	7	1	250	3,705
Total	154,209	366,956	28,024	88,864	1,144,919
Frozen Fruit					
Apples	190	454	143	15,145	86,832
Blueberries	93	457	112	8,195	44,807
Cherries, Tart (RSP)	82	176	1,754	6,628	97,224
Cherries, Sweet	3	24	619	2,138	12,204
Peaches	92	513	153	47,181	54,484
Raspberries, Red	77	428	10	36,522	40,150
Strawberries, Total	3,423	27,365	2,416	203,788	248,173
Other Frozen Fruit	290	9,890	2,716	93,408	625,762

See footnotes at end of table.

--continued

**Stocks in Cold Storage: By Commodity, Region,
and United States, February 29, 2000 (continued)**

Commodity	New England	Middle Atlantic	East North Central	West North Central	South Atlantic
	<i>1,000 Pounds</i>	<i>1,000 Pounds</i>	<i>1,000 Pounds</i>	<i>1,000 Pounds</i>	<i>1,000 Pounds</i>
Frozen Juice					
Orange Juice Conc. ²	24		2,876	171	1,826,047
Other Juice Concentrate	60	15,695	11,041	1,307	133,423
Frozen Vegetables ³					
Asparagus		363	4,019	10	402
Limas, Fordhook		566	233	171	2,442
Limas, Baby		3,787	1,233	642	10,128
Green Beans, Reg. Cut		17,239	26,554	1,105	2,686
Green Beans, Fr. Style		6,209	4,507	127	355
Broccoli, Spears		5,373	339	1,230	2,560
Broccoli, Chopped & Cut		7,769	8,589	3,157	6,960
Brussels Sprouts		2,454	300	607	513
Carrots, Diced		3,930	17,271	848	4,169
Carrots, Other		9,942	9,835	1,265	6,275
Cauliflower		2,713	2,974	2,097	1,321
Corn, Cut		28,469	24,235	13,634	5,977
Corn, Cob		9,834	13,150	21,808	2,060
Mixed Vegetables		2,345	4,249	1,320	2,548
Okra		1,302	154	1,245	8,107
Onion Rings		957	9,774	2,093	944
Onions, Other		4,323	3,889	420	1,242
Blackeye Peas		140	263	15	1,569
Green Peas		26,430	19,736	9,249	5,278
Peas & Carrots Mixed		689	714	50	422
Spinach		7,358	1,293	530	6,220
Squash, Summer/Zucchini		3,153	10,799	714	5,663
Southern Greens		2,089	22	21	11,023
Other Vegetables		28,427	19,357	15,257	31,624
Potatoes					
French Fries	41,198	38,811	63,801	115,502	21,494
Other Frozen	6,850	9,787	31,460	8,320	4,961
Meat					
Frozen Beef					
Boneless	5,304	33,110	30,111	62,172	26,933
Beef Cuts	526	1,367	4,655	9,307	2,231
Frozen Pork					
Ribs	509	1,286	19,652	33,817	7,838
Trimnings	125	1,763	15,106	32,683	7,197
Other	2,554	3,375	19,511	30,017	7,588
Other					
Veal	179	432	1,922	807	28
Lamb & Mutton	384	2,822	1,282	451	467

See footnotes at end of table.

--continued

**Stocks in Cold Storage: By Commodity, Region,
and United States, February 29, 2000 (continued)**

Commodity	East South Central	West South Central	Mountain	Pacific	US Total
	<i>1,000 Pounds</i>	<i>1,000 Pounds</i>	<i>1,000 Pounds</i>	<i>1,000 Pounds</i>	<i>1,000 Pounds</i>
Frozen Juice					
Orange Juice Concentrate	339	7,156	1,855	62,850	1,901,318
Other Juice Concentrate	1,508	19,828	266	111,255	294,383
Frozen Vegetables ³					
Asparagus		578	113	2,945	8,430
Limas, Fordhook		269	552	4,570	8,803
Limas, Baby		538	7,030	18,284	41,642
Green Beans, Reg. Cut		1,350	45	60,575	109,554
Green Beans, Fr. Style		320	72	15,384	26,974
Broccoli, Spears		20,744	134	8,919	39,299
Broccoli, Chopped & Cut		31,109	1,907	55,971	115,462
Brussels Sprouts		1,008	123	18,411	23,416
Carrots, Diced		1,616	112	46,846	74,792
Carrots, Other		17,234	1,584	140,052	186,187
Cauliflower		19,182	1,430	31,300	61,017
Corn, Cut		3,174	3,404	179,163	258,056
Corn, Cob		2,429	4	154,846	204,131
Mixed Vegetables		6,215	69	27,538	44,284
Okra		20,796		573	32,177
Onion Rings		1,320	1,125	412	16,625
Onions, Other		680	4,518	28,490	43,562
Blackeye Peas		1,349		163	3,499
Green Peas		2,518	11,926	128,787	203,924
Peas & Carrots Mixed		109	15	5,890	7,889
Spinach		18,852	14,120	28,725	77,098
Squash, Summer/Zucchini		5,173	565	15,322	41,389
Southern Greens		15,988	133	725	30,001
Other Vegetables		42,379	3,213	148,801	289,058
Potatoes					
French Fries	1,791	8,130	261,821	473,590	1,026,138
Other Frozen	817	8,332	48,101	124,743	243,371
Meat					
Frozen Beef					
Boneless ⁴	2,821	48,007	5,127	59,670	273,255
Beef Cuts ⁵	529	10,948	7,202	10,509	47,274
Frozen Pork					
Ribs ⁶	4,137	2,230	12	3,692	73,173
Trimmings ⁷	264	1,657	100	261	59,156
Other ⁸	8,078	12,047	168	6,376	89,714
Other					
Veal		541	17	1,609	5,535
Lamb & Mutton	13	375	513	3,996	10,303

¹ East North Central combined with South Atlantic. Mountain and West North Central combined with West South Central.

² Middle Atlantic combined with South Atlantic.

³ New England combined with Middle Atlantic. East South Central combined with South Atlantic.

⁴ Includes all boxed boneless beef, such as ground beef, roasts, steaks, loins, strips, rounds, trimmings, etc. Variety meats (edible offal), such as tongues, livers, hearts, kidneys, and other organs removed from slaughtered beef, are included as miscellaneous freezer stocks.

⁵ Includes all boxed primal beef cuts, bone-in.

⁶ Includes spareribs and backribs.

⁷ Includes 42% regular trimmings, 72% special trimmings, boneless picnic meat, jowls, neckbone trimmings, blade, cheek, head, and shank meat, etc. Packaged bacon, sausage, and processed items, such as hot dogs and luncheon meats, are included in miscellaneous cooler or freezer stocks.

⁸ Includes ears, tails, feet, neckbones and snouts.

**Stocks in Cold Storage: By Commodity, Region,
and United States, March 31, 2000**

Commodity	New England	Middle Atlantic	East North Central	West North Central	South Atlantic
	<i>1,000 Pounds</i>	<i>1,000 Pounds</i>	<i>1,000 Pounds</i>	<i>1,000 Pounds</i>	<i>1,000 Pounds</i>
Total Fresh Apples	30,287	306,557	207,781		136,488
Nuts					
Shelled					
Peanuts		8	245	36	357,003
Pecans ¹		106			11,764
In-Shell					
Pecans ¹					60,355
Dairy Products					
Natural Cheese					
American, Total	19,702	43,085	254,509	113,730	4,212
Other Natural Cheese	598	8,509	100,749	64,915	354
Frozen Poultry					
Broilers (Whole)	101	403	736	915	12,028
Hens		70	506	1,317	1,170
Other Chicken	1,909	23,071	16,545	29,670	214,779
Total	2,010	23,544	17,787	31,902	227,977
Whole Turkeys	4,047	12,596	14,541	29,550	41,843
Other Turkey	273	13,798	15,781	54,453	66,204
Total	4,320	26,394	30,322	84,003	108,047
Ducks	37	181	3,513	11	11
Total	6,367	50,119	51,622	115,916	336,035
Frozen Fruit					
Apples	22	26,630	43,481	229	173
Blueberries	7,465	6,229	16,622	142	709
Cherries, Tart (RSP)	26	4,477	72,925	95	26
Cherries, Sweet		444	7,978	78	7
Peaches	22	1,984	3,173	38	317
Raspberries, Red	224	1,575	696	112	89
Strawberries, Total	75	3,360	3,672	2,390	913
Other Frozen Fruit	146,220	29,164	277,542	754	2,695

See footnotes at end of table.

--continued

**Stocks in Cold Storage: By Commodity, Region,
and United States, March 31, 2000 (continued)**

Commodity	East South Central	West South Central	Mountain	Pacific	US Total
	<i>1,000 Pounds</i>	<i>1,000 Pounds</i>	<i>1,000 Pounds</i>	<i>1,000 Pounds</i>	<i>1,000 Pounds</i>
Total Fresh Apples		6,147	4,201	1,776,138	2,467,599
Nuts					
Shelled					
Peanuts	62,312	160,093	139	331	580,167
Pecans ¹	1,293	19,321		169	32,653
In-Shell					
Pecans ¹	3,255	203,662			267,272
Dairy Products					
Natural Cheese					
American, Total		687	10,172	84,054	530,151
Other Natural Cheese	178	548	142	10,747	186,740
Frozen Poultry					
Broilers (Whole)	3,978	17,390	706	1,817	38,074
Hens	829	478	272	1,357	5,999
Other Chicken	149,291	279,106	4,284	47,548	766,203
Total	154,098	296,974	5,262	50,722	810,276
Whole Turkeys	1,652	51,569	7,907	28,648	192,353
Other Turkey	900	27,513	9,761	17,405	206,088
Total	2,552	79,082	17,668	46,053	398,441
Ducks	1	3	1	166	3,924
Total	156,651	376,059	22,931	96,941	1,212,641
Frozen Fruit					
Apples	133	276	197	16,155	87,296
Blueberries	85	374	92	6,586	38,304
Cherries, Tart (RSP)	53	155	1,445	5,830	85,032
Cherries, Sweet	3	50	432	2,009	11,001
Peaches	65	698	22	35,153	41,472
Raspberries, Red	31	303	1	34,404	37,435
Strawberries, Total	3,061	27,954	1,961	179,239	222,625
Other Frozen Fruit	320	9,064	952	84,462	551,173

See footnotes at end of table.

--continued

**Stocks in Cold Storage: By Commodity, Region,
and United States, March 31, 2000 (continued)**

Commodity	New England	Middle Atlantic	East North Central	West North Central	South Atlantic
	<i>1,000 Pounds</i>	<i>1,000 Pounds</i>	<i>1,000 Pounds</i>	<i>1,000 Pounds</i>	<i>1,000 Pounds</i>
Frozen Juice					
Orange Juice Conc. ²	19		436	83	1,800,293
Other Juice Concentrate	59	10,916	10,153	2,085	148,302
Frozen Vegetables ³					
Asparagus		381	3,796	6	311
Limas, Fordhook		572	234	140	2,277
Limas, Baby		3,863	1,112	562	8,404
Green Beans, Reg. Cut		14,251	24,042	940	2,287
Green Beans, Fr. Style		5,106	3,709	108	296
Broccoli, Spears		5,282	286	1,032	2,492
Broccoli, Chopped & Cut		9,001	8,375	3,355	6,852
Brussels Sprouts		2,227	303	533	498
Carrots, Diced		3,042	16,258	791	3,669
Carrots, Other		11,151	9,182	1,131	4,784
Cauliflower		2,653	2,788	1,937	1,219
Corn, Cut		22,387	20,352	12,271	5,224
Corn, Cob		6,546	11,139	18,441	2,216
Mixed Vegetables		3,049	4,598	1,422	3,007
Okra		1,086	190	1,178	7,266
Onion Rings		1,077	8,798	1,847	616
Onions, Other		4,749	4,143	422	1,316
Blackeye Peas		167	246	15	1,522
Green Peas		20,685	15,894	7,740	4,789
Peas & Carrots Mixed		576	315	39	422
Spinach		5,433	1,447	656	6,359
Squash, Summer/Zucchini		2,865	9,668	672	5,296
Southern Greens		1,799	2	103	10,065
Other Vegetables		26,460	18,298	13,871	30,382
Potatoes					
French Fries	45,890	41,073	67,687	122,104	21,886
Other Frozen	7,725	10,538	34,777	7,525	5,237
Meat					
Frozen Beef					
Boneless ⁴	2,506	38,279	33,584	62,103	24,949
Beef Cuts ⁵	507	3,425	5,941	11,667	2,478
Frozen Pork					
Ribs ⁶	525	1,381	19,931	34,746	7,480
Trimmings ⁷	644	2,327	16,031	32,170	6,338
Other ⁸	2,928	3,542	20,485	29,986	6,833
Other					
Veal	157	412	1,579	886	26
Lamb & Mutton	433	3,855	1,300	321	731

See footnotes at end of table.

--continued

**Stocks in Cold Storage: By Commodity, Region,
and United States, March 31, 2000 (continued)**

Commodity	East South Central	West South Central	Mountain	Pacific	US Total
	<i>1,000 Pounds</i>	<i>1,000 Pounds</i>	<i>1,000 Pounds</i>	<i>1,000 Pounds</i>	<i>1,000 Pounds</i>
Frozen Juice					
Orange Juice Concentrate	722	8,724	1,720	60,801	1,872,798
Other Juice Concentrate	1,855	20,265	808	120,676	315,119
Frozen Vegetables ³					
Asparagus		630	82	6,313	11,519
Limas, Fordhook		250	93	3,855	7,421
Limas, Baby		654	6,320	16,084	36,999
Green Beans, Reg. Cut		1,157	34	47,889	90,600
Green Beans, Fr. Style		223	88	12,422	21,952
Broccoli, Spears		17,687	96	10,139	37,014
Broccoli, Chopped & Cut		36,615	1,731	49,955	115,884
Brussels Sprouts		1,066	122	14,168	18,917
Carrots, Diced		2,294	367	40,336	66,757
Carrots, Other		20,285	1,441	125,913	173,887
Cauliflower		17,546	947	23,511	50,601
Corn, Cut		2,675	249	148,470	211,628
Corn, Cob		2,468	44	128,796	169,650
Mixed Vegetables		6,503	28	25,134	43,741
Okra		21,225		528	31,473
Onion Rings		847	1,003	242	14,430
Onions, Other		1,268	5,537	28,149	45,584
Blackeye Peas		1,283		176	3,409
Green Peas		2,178	9,902	98,337	159,525
Peas & Carrots Mixed		475	1	5,222	7,050
Spinach		17,909	13,157	33,498	78,459
Squash, Summer/Zucchini		4,690	776	14,003	37,970
Southern Greens		15,131		573	27,673
Other Vegetables		40,818	3,183	133,777	266,789
Potatoes					
French Fries	1,212	10,073	264,599	452,272	1,026,796
Other Frozen	885	8,432	49,748	145,555	270,422
Meat					
Frozen Beef					
Boneless ⁴	4,829	49,995	4,457	60,794	281,496
Beef Cuts ⁵	406	10,698	8,459	11,425	55,006
Frozen Pork					
Ribs ⁶	4,775	2,045	4	4,141	75,028
Trimmings ⁷	279	1,687	80	240	59,796
Other ⁸	9,481	10,918	156	7,250	91,579
Other					
Veal		292	16	1,284	4,652
Lamb & Mutton		555	660	3,939	11,794

¹ East North Central combined with South Atlantic. Mountain and West North Central Combined with West South Central.

² Middle Atlantic combined with South Atlantic.

³ New England combined with Middle Atlantic. East South Central combined with South Atlantic.

⁴ Includes all boxed boneless beef, such as ground beef, roasts, steaks, loins, strips, rounds, trimmings, etc. Variety meats (edible offal), such as tongues, livers, hearts, kidneys, and other organs removed from slaughtered beef, are included as miscellaneous freezer stocks.

⁵ Includes all boxed primal beef cuts, bone-in.

⁶ Includes spareribs and backribs.

⁷ Includes 42% regular trimmings, 72% special trimmings, boneless picnic meat, jowls, neckbone trimmings, blade, cheek, head, and shank meat, etc. Packaged bacon, sausage, and processed items, such as hot dogs and luncheon meats, are included in miscellaneous cooler or freezer stocks.

⁸ Includes ears, tails, feet, neckbones and snouts.

**Public General Warehouses: Cold Storage Space Occupied
by Region and United States, March 2000**

Region	Cooler				Freezer			
	Usable Space	Usable Space Occupied			Usable Space	Usable Space Occupied		
		Mar 31 2000	Mar 31 1999	Feb 29 2000		Mar 31 2000	Mar 31 1999	Feb 29 2000
	<i>1,000 Cu Ft</i>	<i>Percent</i>	<i>Percent</i>	<i>Percent</i>	<i>1,000 Cu Ft</i>	<i>Percent</i>	<i>Percent</i>	<i>Percent</i>
New England	2,377	61	54	60	20,164	66	68	74
Middle Atlantic	36,349	71	65	63	94,052	78	76	76
E. North Central	51,398	56	48	46	178,929	58	52	49
W. North Central	45,223	50	33	35	142,706	58	49	44
South Atlantic	49,539	50	44	43	167,237	56	61	64
E. South Central	9,260	52	55	56	65,243	51	44	43
W. South Central	20,767	49	39	39	133,212	68	70	67
Mountain	6,059	81	67	67	55,853	72	55	61
Pacific	40,103	41	36	36	273,716	63	67	64
US	261,075	54	45	45	1,131,112	62	61	59

Cold Storage Regions



**Apples in Cold Storage: By State
and United States, March 2000**

State	All Warehouses		
	Mar 31, 1999	Feb 29, 2000	Mar 31, 2000
	<i>1,000 Pounds</i>	<i>1,000 Pounds</i>	<i>1,000 Pounds</i>
CA	48,554	62,926	45,498
MI	101,682	264,771	193,008
N ENG	7,401	44,944	30,287
NY	140,448	244,230	183,960
OH	3,985	11,462	9,045
OR	13,254	18,204	12,807
PA	93,912	161,464	122,455
VA	66,358	112,789	88,505
WA	2,059,175	2,214,915	1,717,834
WV	34,550	46,709	35,296
Other States	37,965	48,422	28,904
US	2,607,284	3,230,836	2,467,599

Survey Procedures: Questionnaires are mailed about the 24th of each month to all operators on the list of approximately 1,400 public and private cold storage warehouses. In addition, apple data are obtained from special surveys and other sources (State Departments of Agriculture, U.S. Apple Association, etc.). All survey data represent stocks as of the end of the month.

Data are collected from warehouses artificially cooled to a temperature of 50 degrees Fahrenheit or lower, and whose food products are normally stored for 30 days or more. All food items in these facilities are reported regardless of the number of days stored at the time of the report. Also included are specialized storage facilities meeting the 30 day requirement, such as fruit houses, dairy manufacturing plants, frozen fruit, fruit juice, and vegetable processors, and poultry and meat packing plants. Excluded are stocks in space maintained by wholesalers, jobbers, distributors, chain stores, locker plants containing individual lockers, meat packer branch houses, and frozen food processors whose entire inventories are turned over more than once a month.

Estimating Procedures: Data for reporting firms are added to estimates for non-reporting firms to obtain regional and National totals. Estimates for non-reporting firms are obtained by multiplying the previous month's figure by a percent change from the previous month. The percent change is calculated for each item from totals of the current and previous month summed from firms that reported both months.

Revision Policy: Data are revised the following month based on late reports or corrected data. Final figures are published in the annual summary in February of the following year.

Reliability: Reports are received from 900 firms each month which represent about 70 percent of the total capacity. Firms that are not on the list or firms who have never reported are not represented in the data. Monthly data can vary due to different firms reporting month to month. Survey data are also subject to non-sampling errors such as omissions and mistakes in reporting and in processing the data. While these errors cannot be measured directly, they are minimized by carefully reviewing all reported data for consistency and reasonableness.

The next "Cold Storage" report will be released at 3 p.m. ET on May 19, 2000.

The United States Department of Agriculture (USDA) prohibits discrimination in all its programs on the basis of race, color, national origin, gender, religion, age, disability, political beliefs, sexual orientation, and marital or family status. (Not all prohibited bases apply to all programs.) Persons with disabilities who require alternative means for communication of program information (braille, large print, audiotape, etc.) should contact the USDA's TARGET Center at 202-720-2600 (voice and TDD).

To file a complaint of discrimination, write USDA, Director, Office of Civil Rights, Room 326-W, Whitten Building, 14th and Independence Avenue, SW, Washington, D.C., 20250-9410, or call 202-720-5964 (voice or TDD). USDA is an equal opportunity provider and employer.

ACCESS TO REPORTS!!

For your convenience, there are several ways to obtain NASS reports, data products, and services:

INTERNET ACCESS

All NASS reports are available free of charge on the worldwide Internet. For access, connect to the Internet and go to the NASS Home Page at: <http://www.usda.gov/nass/>. Select "Today's Reports" or Publications and then Reports by Calendar or Publications and then Search, by Title or Subject.

E-MAIL SUBSCRIPTION

There are two options for subscribing via e-mail. All NASS reports are available by subscription free of charge direct to your e-mail address. 1) Starting with the NASS Home Page at <http://www.usda.gov/nass/>, click on **Publications**, then click on the **Subscribe by E-mail** button which takes you to the page describing e-mail delivery of reports. Finally, click on **Go to the Subscription Page** and follow the instructions. 2) If you do NOT have Internet access, send an e-mail message to: usda-reports@usda.mannlib.cornell.edu. In the body of the message type the word: **list**.

AUTOFAX ACCESS

NASSFax service is available for some reports from your fax machine. Please call 202-720-2000, using the handset attached to your fax. Respond to the voice prompts. Document 0411 is a list of available reports.

PRINTED REPORTS OR DATA PRODUCTS

CALL OUR TOLL-FREE ORDER DESK: 800-999-6779 (U.S. and Canada)
Other areas, please call 703-834-0125 FAX: 703-834-0110
(Visa, MasterCard, check, or money order acceptable for payment.)

ASSISTANCE

For **assistance** with general agricultural statistics or further information about NASS or its products or services, contact the **Agricultural Statistics Hotline** at **800-727-9540**, 7:30 a.m. to 4:00 p.m. ET, or e-mail: nass@nass.usda.gov.