



Cold Storage

Released May 19, 2000, by the National Agricultural Statistics Service (NASS), Agricultural Statistics Board, U.S. Department of Agriculture. For information on "Cold Storage" call Linda Simpson at (202) 720-8784, office hours 7:00 a.m. to 4:30 p.m. ET.

HIGHLIGHTS

Frozen food stocks in refrigerated warehouses on April 30, 2000 were greater than year earlier levels for fruit, chicken, and potatoes. April 2000 stocks of chicken, at 836 million pounds, broke the previous record April high of 820 million pounds set in 1999. Cooler stocks of pecans and peanuts were also higher than a year earlier. Butter stocks were 9 percent above March 2000 but 15 percent below a year ago.

Total red meat supplies in freezers were slightly above March 2000 but were 5 percent below April 1999. Frozen pork stocks were 3 percent below last month but were 16 percent below last year. Stocks of pork bellies increased 5 percent from last month but were 42 percent below April 1999 stocks.

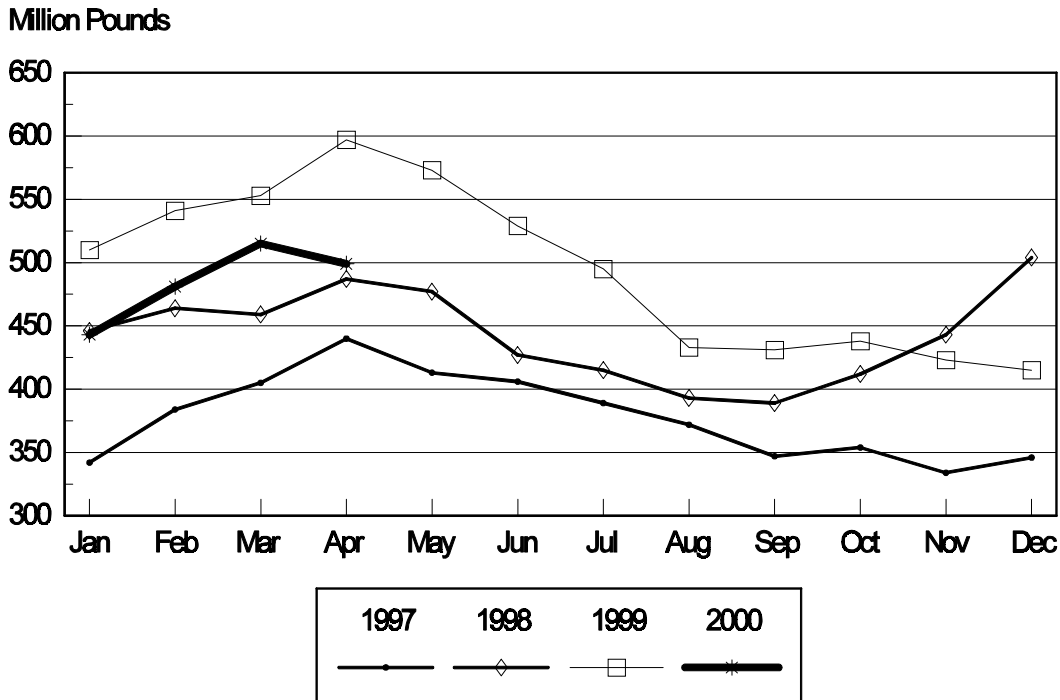
Total frozen poultry supplies were up 4 percent from last month but were 2 percent below last year's level. Total stocks of chicken were up 3 percent from last month and were 2 percent above April 1999. Total pounds of turkey in freezers increased 7 percent from last month but were 9 percent below last year.

Public cooler occupancy was at 43 percent of capacity, down 12 points from last year. Public freezer occupancy at 60 percent was down 3 percentage points from last year.

Table of Contents

	Page
Stocks in Cold Storage: By Commodity, United States, April 2000	3
Stocks in Cold Storage: By Commodity, Region, and United States, March 31, 2000	6
Stocks in Cold Storage: By Commodity, Region, and United States, April 30, 2000	10
Public General Warehouses: Cold Storage Space Occupied by Region and United States, April 2000	14
Apples in Cold Storage: By State and United States, April 2000	15
Survey and Estimating Procedures, Revision Policy and Reliability	16

Total Frozen Pork-Cold Storage Stocks United States, 1997-2000



**Stocks in Cold Storage: By Commodity,
United States, April 2000**

Commodity	Stocks in All Warehouses			Percent of		Public Warehouse Stocks
	Apr 30, 1999	Mar 31, 2000	Apr 30, 2000	Apr 1999	Mar 2000	Apr 30, 2000
	<i>1,000 Pounds</i>	<i>1,000 Pounds</i>	<i>1,000 Pounds</i>	<i>Percent</i>	<i>Percent</i>	<i>1,000 Lbs</i>
Fresh Fruit						
Apples						
Regular Storage	99,710	224,082	132,513	133	59	
Controlled Atmosphere	1,757,990	2,241,156	1,751,456	100	78	
Total	1,857,700	2,465,238	1,883,969	101	76	16,913
Pears						
Bartlett	1,500	3,090	2,386	159	77	
Other Varieties	67,698	130,340	102,591	152	79	
Total	69,198	133,430	104,977	152	79	1,019
Nuts						
Shelled						
Peanuts	581,007	587,893	596,716	103	102	
Pecans	33,279	32,763	41,422	124	126	
Other Shelled	160,938	163,454	169,419	105	104	
Total	775,224	784,110	807,557	104	103	433,292
In-Shell						
Peanuts	25,499	26,684	28,182	111	106	
Pecans	72,016	259,706	228,715	318	88	
Other In-Shell	6,949	5,479	5,891	85	108	
Total	104,464	291,869	262,788	252	90	99,019
Dairy Products						
Butter, Total	125,520	97,793	106,519	85	109	101,998
(Government Owned)	67	347	229	342	66	
Natural Cheese						
American, Total	514,413	524,987	546,535	106	104	
(Government Owned)	20	57	24	120	42	
Swiss	12,066	10,465	10,157	84	97	
Other Natural Cheese	162,172	191,274	191,041	118	100	
Total	688,651	726,726	747,733	109	103	464,315
Eggs, Frozen						
Whites	660	616	439	67	71	
Yolks	646	672	658	102	98	
Whole & Mixed	6,674	6,192	5,394	81	87	
Unclassified	1,376	611	628	46	103	
Total	9,356	8,091	7,119	76	88	6,894
Frozen Poultry						
Chicken						
Broilers (Whole)	25,500	38,320	34,917	137	91	
Hens	10,480	5,993	6,762	65	113	
Other Chicken	783,632	766,558	794,423	101	104	
Total	819,612	810,871	836,102	102	103	
Turkey						
Whole Turkeys	239,906	192,806	203,762	85	106	
Other Turkey	215,505	194,739	209,178	97	107	
Total	455,411	387,545	412,940	91	107	
Ducks	6,010	3,924	4,277	71	109	
Total	1,281,033	1,202,340	1,253,319	98	104	1,172,252

**Stocks in Cold Storage: By Commodity,
United States, April 2000 (Continued)**

Commodity	Stocks in All Warehouses			Percent of		Public Warehouse Stocks
	Apr 30, 1999	Mar 31, 2000	Apr 30, 2000	Apr 1999	Mar 2000	Apr 30, 2000
	<i>1,000 Pounds</i>	<i>1,000 Pounds</i>	<i>1,000 Pounds</i>	<i>Percent</i>	<i>Percent</i>	<i>1,000 Lbs</i>
Frozen Fruit						
Apples	91,603	87,298	87,607	96	100	
Apricots	4,303	5,888	4,583	107	78	
Blackberries, Total	11,161	15,992	18,513	166	116	
IQF	7,043	10,672	13,465	191	126	
Pails and Tubs	1,713	1,299	1,348	79	104	
Barrels, 400 lbs net	1,103	2,216	2,113	192	95	
Concentrate	1,302	1,805	1,587	122	88	
Blueberries	40,093	38,377	30,389	76	79	
Boysenberries	2,904	3,946	3,618	125	92	
Cherries, Tart (RSP)	79,947	85,032	78,365	98	92	
Cherries, Tart (Juice)	3,074	1,074	1,462	48	136	
Cherries, Sweet	10,826	11,001	10,335	95	94	
Grapes	2,983	3,697	3,559	119	96	
Peaches	32,398	41,464	36,772	114	89	
Raspberries, Black	204	564	564	276	100	
Raspberries, Red, Total	19,672	37,377	35,132	179	94	
IQF	7,139	13,284	12,698	178	96	
Pails and Tubs	5,357	10,497	10,131	189	97	
Barrels, 400 lbs net	5,685	11,077	10,645	187	96	
Concentrate	1,491	2,519	1,658	111	66	
Strawberries, Total	126,541	222,599	232,152	183	104	
Other Frozen Fruit	362,843	552,597	478,679	132	87	
Total	788,552	1,106,906	1,021,730	130	92	636,804
Frozen Juice						
Orange Juice Conc. ¹	2,485,739	1,884,189	2,063,899	83	110	
(Gallon Equivalent)	251,186	190,399	208,559			
Other Juice Concentrate	463,494	324,291	337,282	73	104	
Total	2,949,233	2,208,480	2,401,181	81	109	226,242
Frozen Vegetables						
Asparagus	3,046	11,519	10,435	343	91	
Limas, Fordhook	6,367	7,407	6,558	103	89	
Limas, Baby	42,307	37,053	32,541	77	88	
Green Beans, Reg. Cut	91,479	90,874	76,417	84	84	
Green Beans, Fr. Style	27,867	22,004	17,219	62	78	
Broccoli, Spears	45,509	37,139	40,602	89	109	
Broccoli, Chopped & Cut	144,094	115,955	117,610	82	101	
Brussels Sprouts	17,574	18,917	19,520	111	103	
Carrots, Diced	61,712	65,007	59,342	96	91	
Carrots, Other	137,193	170,876	155,117	113	91	
Cauliflower	41,664	50,525	49,794	120	99	
Corn, Cut	210,709	212,660	180,228	86	85	
Corn, Cob	157,387	179,012	159,181	101	89	
Mixed Vegetables	51,251	43,443	48,560	95	112	
Okra	22,738	31,471	29,127	128	93	
Onion Rings	14,528	14,431	13,772	95	95	
Onions, Other	33,113	46,677	51,923	157	111	
Blackeye Peas	5,996	3,409	3,071	51	90	
Green Peas	151,264	156,036	127,393	84	82	
Peas & Carrots Mixed	10,084	6,959	7,589	75	109	
Spinach	154,049	78,459	97,612	63	124	
Squash, Summer/Zucchini	52,283	37,596	36,503	70	97	
Southern Greens	38,377	27,673	34,041	89	123	
Other Vegetables	231,394	263,753	261,031	113	99	
Total	1,751,985	1,728,855	1,635,186	93	95	1,047,502

See footnotes at end of table.

--continued

**Stocks in Cold Storage: By Commodity,
United States, April 2000 (Continued)**

Commodity	Stocks in All Warehouses			Percent of		Public Warehouse Stocks
	Apr 30, 1999	Mar 31, 2000	Apr 30, 2000	Apr 1999	Mar 2000	Apr 30, 2000
	<i>1,000 Pounds</i>	<i>1,000 Pounds</i>	<i>1,000 Pounds</i>	<i>Percent</i>	<i>Percent</i>	<i>1,000 Lbs</i>
Potatoes						
French Fries	976,576	1,022,723	976,199	100	95	
Other Frozen	259,636	270,358	271,498	105	100	
Total	1,236,212	1,293,081	1,247,697	101	96	916,644
Meat						
Frozen Beef						
Boneless ²	275,662	297,480	313,600	114	105	
Beef Cuts ³	41,096	53,041	52,710	128	99	
Total	316,758	350,521	366,310	116	105	363,515
(Government Owned)	3,768	5,888	4,089	109	69	
Frozen Pork						
Picnics, Bone-in	8,952	10,029	8,555	96	85	
Hams, Total	102,132	97,310	86,434	85	89	81,453
Bone-in	71,722	50,543	48,819	68	97	47,383
Boneless ⁴	30,410	46,767	37,615	124	80	34,070
Bellies	109,521	60,139	63,414	58	105	
Loins, Total	32,460	24,637	24,026	74	98	21,090
Bone-in	19,021	14,190	14,510	76	102	
Boneless ⁵	13,439	10,447	9,516	71	91	
Ribs ⁶	79,006	75,482	74,174	94	98	
Butts	17,808	11,290	9,961	56	88	
Trimmings ⁷	70,024	60,664	56,175	80	93	
Other ⁸	109,892	98,082	97,242	88	99	
Variety Meats ⁹	50,672	52,138	49,924	99	96	
Unclassified ¹⁰	16,462	25,441	29,330	178	115	
Total	596,929	515,212	499,235	84	97	432,540
(Government Owned)	6,051	5,820	5,521	91	95	
Other						
Veal	4,183	4,652	3,814	91	82	
Lamb & Mutton	13,146	11,788	13,110	100	111	
Total	17,329	16,440	16,924	98	103	16,618
Canned						
Canned Hams	4,511	5,023	5,440	121	108	
Other Canned Meat	861	451	464	54	103	
Total	5,372	5,474	5,904	110	108	2,839
Total	936,388	887,647	888,373	95	100	815,512
Miscellaneous						
Cooler	716,997	731,138	726,049	101	99	468,241
Freezer	2,004,623	2,110,848	2,107,242	105	100	2,038,498
Total	2,721,620	2,841,986	2,833,291	104	100	2,506,739
Commodities						
Stored in Coolers	4,217,606	5,137,985	4,538,977	108	88	1,485,638
Stored in Freezers	11,077,530	10,638,567	10,662,462	96	100	6,959,507
Total	15,295,136	15,776,552	15,201,439	99	96	8,445,145

¹ Adjusted to 42.0 degrees Brix equivalent (9.896 pounds per gallon).

² Includes all boxed boneless beef, such as ground beef, roasts, steaks, loins, strips, rounds, trimmings, etc. Variety meats (edible offal), such as tongues, livers, hearts, kidneys, and other organs removed from slaughtered beef, are included as miscellaneous freezer stocks.

³ Includes all boxed primal beef cuts, bone-in.

⁴ Includes full ham, bone removed and individual muscles separated.

⁵ Includes pork tenderloins.

⁶ Includes spareribs and backribs.

⁷ Includes 42% regular trimmings, 72% special trimmings, boneless picnic meat, jowls, neckbone trimmings, blade, cheek, head, and shank meat, etc. Packaged bacon, sausage, and processed items, such as hot dogs and luncheon meats, are included in miscellaneous cooler or freezer stocks.

⁸ Includes ears, tails, feet, neckbones and snouts.

⁹ Includes tongues, kidneys, livers, stomachs, hearts, chitterlings, salivary glands, and other organs removed from slaughtered hogs.

¹⁰ Includes pork unable to be classified elsewhere in this report.

**Stocks in Cold Storage: By Commodity, Region,
and United States, March 31, 2000**

Commodity	New England	Middle Atlantic	East North Central	West North Central	South Atlantic
	<i>1,000 Pounds</i>	<i>1,000 Pounds</i>	<i>1,000 Pounds</i>	<i>1,000 Pounds</i>	<i>1,000 Pounds</i>
Total Fresh Apples	30,287	307,476	207,781		133,208
Nuts					
Shelled					
Peanuts		8	245	36	375,133
Pecans ¹		106			11,764
In-Shell					
Pecans ¹					60,355
Dairy Products					
Natural Cheese					
American, Total	19,702	43,085	252,624	112,140	4,212
Other Natural Cheese	598	8,509	101,155	69,043	354
Frozen Poultry					
Broilers (Whole)	101	403	736	915	12,353
Hens		70	506	1,317	1,164
Other Chicken	1,909	22,835	16,545	30,658	214,372
Total	2,010	23,308	17,787	32,890	227,889
Whole Turkeys	4,047	12,596	14,541	30,400	41,529
Other Turkey	273	13,798	15,781	58,333	50,975
Total	4,320	26,394	30,322	88,733	92,504
Ducks	37	181	3,513	11	11
Total	6,367	49,883	51,622	121,634	320,404
Frozen Fruit					
Apples	22	26,630	43,481	231	173
Blueberries	7,465	6,229	16,622	143	709
Cherries, Tart (RSP)	26	4,477	72,925	95	26
Cherries, Sweet		444	7,978	78	7
Peaches	22	1,984	3,173	38	317
Raspberries, Red	224	1,575	696	112	89
Strawberries, Total	75	3,360	3,672	2,386	913
Other Frozen Fruit	146,220	29,164	278,981	754	2,688

See footnotes at end of table.

--continued

**Stocks in Cold Storage: By Commodity, Region,
and United States, March 31, 2000 (continued)**

Commodity	East South Central	West South Central	Mountain	Pacific	US Total
	<i>1,000 Pounds</i>	<i>1,000 Pounds</i>	<i>1,000 Pounds</i>	<i>1,000 Pounds</i>	<i>1,000 Pounds</i>
Total Fresh Apples		6,147	4,201	1,776,138	2,465,238
Nuts					
Shelled					
Peanuts	62,312	149,689	139	331	587,893
Pecans ¹	1,293	19,431		169	32,763
In-Shell					
Pecans ¹	3,255	196,096			259,706
Dairy Products					
Natural Cheese					
American, Total		687	9,878	82,659	524,987
Other Natural Cheese	178	548	142	10,747	191,274
Frozen Poultry					
Broilers (Whole)	3,978	17,390	627	1,817	38,320
Hens	829	478	272	1,357	5,993
Other Chicken	149,291	279,106	4,294	47,548	766,558
Total	154,098	296,974	5,193	50,722	810,871
Whole Turkeys	1,652	51,569	7,824	28,648	192,806
Other Turkey	900	27,513	9,761	17,405	194,739
Total	2,552	79,082	17,585	46,053	387,545
Ducks	1	3	1	166	3,924
Total	156,651	376,059	22,779	96,941	1,202,340
Frozen Fruit					
Apples	133	276	197	16,155	87,298
Blueberries	85	374	92	6,658	38,377
Cherries, Tart (RSP)	53	155	1,445	5,830	85,032
Cherries, Sweet	3	50	432	2,009	11,001
Peaches	65	698	14	35,153	41,464
Raspberries, Red	31	303	1	34,346	37,377
Strawberries, Total	3,061	27,954	1,961	179,217	222,599
Other Frozen Fruit	320	9,064	952	84,454	552,597

See footnotes at end of table.

--continued

**Stocks in Cold Storage: By Commodity, Region,
and United States, March 31, 2000 (continued)**

Commodity	New England	Middle Atlantic	East North Central	West North Central	South Atlantic
	<i>1,000 Pounds</i>	<i>1,000 Pounds</i>	<i>1,000 Pounds</i>	<i>1,000 Pounds</i>	<i>1,000 Pounds</i>
Frozen Juice					
Orange Juice Conc. ²	19		622	84	1,811,497
Other Juice Concentrate	59	10,916	10,611	2,094	157,007
Frozen Vegetables ³					
Asparagus		381	3,796	6	311
Limas, Fordhook		572	234	140	2,263
Limas, Baby		3,863	1,137	562	8,224
Green Beans, Reg. Cut		14,251	24,036	940	2,413
Green Beans, Fr. Style		5,106	3,715	108	296
Broccoli, Spears		5,282	411	1,032	2,492
Broccoli, Chopped & Cut		9,001	8,475	3,392	6,795
Brussels Sprouts		2,227	303	533	498
Carrots, Diced		3,042	14,964	791	3,613
Carrots, Other		11,151	10,401	1,133	4,644
Cauliflower		2,653	2,788	1,937	1,219
Corn, Cut		22,387	19,859	12,281	4,409
Corn, Cob		6,546	16,539	17,955	2,216
Mixed Vegetables		3,049	4,574	1,422	2,967
Okra		1,086	190	1,178	7,266
Onion Rings		1,077	8,798	1,848	616
Onions, Other		4,749	4,545	421	1,310
Blackeye Peas		167	246	15	1,522
Green Peas		20,685	11,715	7,781	4,730
Peas & Carrots Mixed		576	315	39	419
Spinach		5,433	1,447	656	6,359
Squash, Summer/Zucchini		2,865	9,664	672	4,881
Southern Greens		1,799	2	103	10,065
Other Vegetables		26,460	18,484	13,974	30,151
Potatoes					
French Fries	45,890	41,073	67,552	122,103	21,793
Other Frozen	7,725	10,538	34,746	7,525	5,228
Meat					
Frozen Beef					
Boneless	2,506	37,907	33,584	79,348	22,060
Beef Cuts	507	3,425	5,941	11,667	2,478
Frozen Pork					
Ribs	525	1,381	19,931	35,281	7,399
Trimnings	644	2,327	16,031	33,038	6,338
Other	2,928	3,542	21,088	35,686	7,033
Other					
Veal	157	412	1,579	886	26
Lamb & Mutton	433	3,855	1,300	321	725

See footnotes at end of table.

--continued

**Stocks in Cold Storage: By Commodity, Region,
and United States, March 31, 2000 (continued)**

Commodity	East South Central	West South Central	Mountain	Pacific	US Total
	<i>1,000 Pounds</i>	<i>1,000 Pounds</i>	<i>1,000 Pounds</i>	<i>1,000 Pounds</i>	<i>1,000 Pounds</i>
Frozen Juice					
Orange Juice Concentrate	722	8,724	1,720	60,801	1,884,189
Other Juice Concentrate	1,855	20,265	808	120,676	324,291
Frozen Vegetables ³					
Asparagus		630	82	6,313	11,519
Limas, Fordhook		250	93	3,855	7,407
Limas, Baby		654	6,320	16,293	37,053
Green Beans, Reg. Cut		1,157	34	48,043	90,874
Green Beans, Fr. Style		223	88	12,468	22,004
Broccoli, Spears		17,687	96	10,139	37,139
Broccoli, Chopped & Cut		36,615	1,731	49,946	115,955
Brussels Sprouts		1,066	122	14,168	18,917
Carrots, Diced		2,294	367	39,936	65,007
Carrots, Other		15,565	1,441	126,541	170,876
Cauliflower		17,546	947	23,435	50,525
Corn, Cut		2,675	249	150,800	212,660
Corn, Cob		2,468	44	133,244	179,012
Mixed Vegetables		6,503	28	24,900	43,443
Okra		21,225		526	31,471
Onion Rings		847	1,003	242	14,431
Onions, Other		1,268	6,244	28,140	46,677
Blackeye Peas		1,283		176	3,409
Green Peas		2,178	9,902	99,045	156,036
Peas & Carrots Mixed		475	1	5,134	6,959
Spinach		17,909	13,157	33,498	78,459
Squash, Summer/Zucchini		4,690	776	14,048	37,596
Southern Greens		15,131		573	27,673
Other Vegetables		38,088	3,141	133,455	263,753
Potatoes					
French Fries	1,212	10,073	264,599	448,428	1,022,723
Other Frozen	885	8,432	49,743	145,536	270,358
Meat					
Frozen Beef					
Boneless ⁴	4,829	51,995	4,457	60,794	297,480
Beef Cuts ⁵	406	8,698	8,494	11,425	53,041
Frozen Pork					
Ribs ⁶	4,775	2,045	4	4,141	75,482
Trimmings ⁷	279	1,687	80	240	60,664
Other ⁸	9,481	10,918	156	7,250	98,082
Other					
Veal		292	16	1,284	4,652
Lamb & Mutton		555	660	3,939	11,788

¹ East North Central combined with South Atlantic. Mountain and West North Central combined with West South Central.

² Middle Atlantic combined with South Atlantic.

³ New England combined with Middle Atlantic. East South Central combined with South Atlantic.

⁴ Includes all boxed boneless beef, such as ground beef, roasts, steaks, loins, strips, rounds, trimmings, etc. Variety meats (edible offal), such as tongues, livers, hearts, kidneys, and other organs removed from slaughtered beef, are included as miscellaneous freezer stocks.

⁵ Includes all boxed primal beef cuts, bone-in.

⁶ Includes spareribs and backribs.

⁷ Includes 42% regular trimmings, 72% special trimmings, boneless picnic meat, jowls, neckbone trimmings, blade, cheek, head, and shank meat, etc. Packaged bacon, sausage, and processed items, such as hot dogs and luncheon meats, are included in miscellaneous cooler or freezer stocks.

⁸ Includes ears, tails, feet, neckbones and snouts.

**Stocks in Cold Storage: By Commodity, Region,
and United States, April 30, 2000**

Commodity	New England	Middle Atlantic	East North Central	West North Central	South Atlantic
	<i>1,000 Pounds</i>	<i>1,000 Pounds</i>	<i>1,000 Pounds</i>	<i>1,000 Pounds</i>	<i>1,000 Pounds</i>
Total Fresh Apples	19,700	222,297	136,052		99,398
Nuts					
Shelled					
Peanuts		22	245	36	387,701
Pecans ¹		119			13,830
In-Shell					
Pecans ¹					48,984
Dairy Products					
Natural Cheese					
American, Total	20,438	44,622	266,007	115,079	4,426
Other Natural Cheese	658	7,864	99,045	71,442	518
Frozen Poultry					
Broilers (Whole)	101	351	856	886	9,476
Hens		63	602	1,364	1,300
Other Chicken	1,891	24,277	17,872	29,587	211,601
Total	1,992	24,691	19,330	31,837	222,377
Whole Turkeys	4,399	15,104	16,603	30,355	40,269
Other Turkey	294	14,568	15,898	65,232	53,177
Total	4,693	29,672	32,501	95,587	93,446
Ducks	40	134	3,922	4	12
Total	6,725	54,497	55,753	127,428	315,835
Frozen Fruit					
Apples	25	24,325	45,813	132	298
Blueberries	7,267	3,621	13,331	128	126
Cherries, Tart (RSP)	23	3,734	67,449	90	111
Cherries, Sweet		401	7,511	65	7
Peaches	20	1,820	2,821	57	1,501
Raspberries, Red	224	1,454	787	100	96
Strawberries, Total	67	3,131	3,886	2,255	1,026
Other Frozen Fruit	124,332	25,748	248,091	739	1,931

See footnotes at end of table.

--continued

**Stocks in Cold Storage: By Commodity, Region,
and United States, April 30, 2000 (continued)**

Commodity	East South Central	West South Central	Mountain	Pacific	US Total
	<i>1,000 Pounds</i>	<i>1,000 Pounds</i>	<i>1,000 Pounds</i>	<i>1,000 Pounds</i>	<i>1,000 Pounds</i>
Total Fresh Apples		4,028	2,154	1,400,340	1,883,969
Nuts					
Shelled					
Peanuts	60,348	147,891	142	331	596,716
Pecans ¹	1,182	26,116		175	41,422
In-Shell					
Pecans ¹	2,946	176,785			228,715
Dairy Products					
Natural Cheese					
American, Total		371	11,049	84,543	546,535
Other Natural Cheese	188	466	257	10,603	191,041
Frozen Poultry					
Broilers (Whole)	1,721	19,104	584	1,838	34,917
Hens	871	537	228	1,797	6,762
Other Chicken	160,598	294,791	2,463	51,343	794,423
Total	163,190	314,432	3,275	54,978	836,102
Whole Turkeys	2,565	53,745	7,951	32,771	203,762
Other Turkey	897	31,853	11,854	15,405	209,178
Total	3,462	85,598	19,805	48,176	412,940
Ducks	2	3	1	159	4,277
Total	166,654	400,033	23,081	103,313	1,253,319
Frozen Fruit					
Apples	140	599	222	16,053	87,607
Blueberries	78	378	94	5,366	30,389
Cherries, Tart (RSP)	42	219	1,337	5,360	78,365
Cherries, Sweet	3	45	473	1,830	10,335
Peaches	49	532	6	29,966	36,772
Raspberries, Red	118	1,002	7	31,344	35,132
Strawberries, Total	2,891	31,923	603	186,370	232,152
Other Frozen Fruit	237	8,593	1,012	67,996	478,679

See footnotes at end of table.

--continued

**Stocks in Cold Storage: By Commodity, Region,
and United States, April 30, 2000 (continued)**

Commodity	New England	Middle Atlantic	East North Central	West North Central	South Atlantic
	<i>1,000 Pounds</i>	<i>1,000 Pounds</i>	<i>1,000 Pounds</i>	<i>1,000 Pounds</i>	<i>1,000 Pounds</i>
Frozen Juice					
Orange Juice Conc. ²	381		676	83	1,984,405
Other Juice Concentrate	60	10,629	11,781	2,269	166,909
Frozen Vegetables ³					
Asparagus		344	3,122	7	268
Limas, Fordhook		534	525	142	2,230
Limas, Baby		3,748	1,160	507	6,853
Green Beans, Reg. Cut		10,567	21,794	689	2,284
Green Beans, Fr. Style		3,753	3,149	77	337
Broccoli, Spears		5,468	1,847	571	2,936
Broccoli, Chopped & Cut		8,929	10,667	3,839	7,040
Brussels Sprouts		2,043	737	513	574
Carrots, Diced		2,679	14,172	811	2,746
Carrots, Other		9,550	9,764	1,005	5,611
Cauliflower		2,291	2,918	1,804	1,136
Corn, Cut		14,379	22,418	10,122	5,332
Corn, Cob		4,407	20,159	13,877	4,367
Mixed Vegetables		3,544	5,836	1,520	3,499
Okra		1,051	358	1,013	7,107
Onion Rings		1,084	8,382	1,803	790
Onions, Other		5,207	4,840	445	1,523
Blackeye Peas		153	264	9	1,295
Green Peas		15,119	12,200	6,043	4,151
Peas & Carrots Mixed		685	356	46	399
Spinach		7,137	3,544	955	7,822
Squash, Summer/Zucchini		3,170	8,824	570	6,211
Southern Greens		2,232	107	115	17,078
Other Vegetables		26,149	18,907	12,374	31,502
Potatoes					
French Fries	36,658	40,848	67,385	109,880	18,276
Other Frozen	8,156	9,767	33,837	7,035	4,546
Meat					
Frozen Beef					
Boneless ⁴	2,628	40,627	32,261	84,053	30,161
Beef Cuts ⁵	683	3,207	6,465	10,456	2,815
Frozen Pork					
Ribs ⁶	539	1,582	19,284	32,985	8,486
Trimmings ⁷	368	2,256	15,658	29,591	6,195
Other ⁸	3,190	2,966	22,365	35,617	7,771
Other					
Veal	141	354	1,423	535	74
Lamb & Mutton	455	3,766	1,575	497	687

See footnotes at end of table.

--continued

**Stocks in Cold Storage: By Commodity, Region,
and United States, April 30, 2000 (continued)**

Commodity	East South Central	West South Central	Mountain	Pacific	US Total
	<i>1,000 Pounds</i>	<i>1,000 Pounds</i>	<i>1,000 Pounds</i>	<i>1,000 Pounds</i>	<i>1,000 Pounds</i>
Frozen Juice					
Orange Juice Concentrate	660	8,966	1,860	66,868	2,063,899
Other Juice Concentrate	1,822	19,445	775	123,592	337,282
Frozen Vegetables ³					
Asparagus		696	182	5,816	10,435
Limas, Fordhook		217	93	2,817	6,558
Limas, Baby		731	5,570	13,972	32,541
Green Beans, Reg. Cut		979	349	39,755	76,417
Green Beans, Fr. Style		180	145	9,578	17,219
Broccoli, Spears		17,247	4	12,529	40,602
Broccoli, Chopped & Cut		33,794	1,588	51,753	117,610
Brussels Sprouts		1,161	122	14,370	19,520
Carrots, Diced		2,713	607	35,614	59,342
Carrots, Other		16,919	1,285	110,983	155,117
Cauliflower		15,366	745	25,534	49,794
Corn, Cut		2,777	269	124,931	180,228
Corn, Cob		2,392	56	113,923	159,181
Mixed Vegetables		7,875	30	26,256	48,560
Okra		18,977		621	29,127
Onion Rings		479	977	257	13,772
Onions, Other		2,586	7,988	29,334	51,923
Blackeye Peas		1,202		148	3,071
Green Peas		2,898	8,295	78,687	127,393
Peas & Carrots Mixed		563	1	5,539	7,589
Spinach		16,075	11,999	50,080	97,612
Squash, Summer/Zucchini		4,060	849	12,819	36,503
Southern Greens		14,013		496	34,041
Other Vegetables		35,710	2,874	133,515	261,031
Potatoes					
French Fries	1,022	5,487	271,500	425,143	976,199
Other Frozen	1,350	7,801	49,443	149,563	271,498
Meat					
Frozen Beef					
Boneless ⁴	3,131	52,158	5,792	62,789	313,600
Beef Cuts ⁵	404	8,399	7,940	12,341	52,710
Frozen Pork					
Ribs ⁶	3,795	2,865	4	4,634	74,174
Trimmings ⁷	279	1,582	91	155	56,175
Other ⁸	7,258	10,672	129	7,274	97,242
Other					
Veal		31	14	1,242	3,814
Lamb & Mutton		828	1,200	4,102	13,110

¹ East North Central combined with South Atlantic. Mountain and West North Central Combined with West South Central.

² Middle Atlantic combined with South Atlantic.

³ New England combined with Middle Atlantic. East South Central combined with South Atlantic.

⁴ Includes all boxed boneless beef, such as ground beef, roasts, steaks, loins, strips, rounds, trimmings, etc. Variety meats (edible offal), such as tongues, livers, hearts, kidneys, and other organs removed from slaughtered beef, are included as miscellaneous freezer stocks.

⁵ Includes all boxed primal beef cuts, bone-in.

⁶ Includes spareribs and backribs.

⁷ Includes 42% regular trimmings, 72% special trimmings, boneless picnic meat, jowls, neckbone trimmings, blade, cheek, head, and shank meat, etc. Packaged bacon, sausage, and processed items, such as hot dogs and luncheon meats, are included in miscellaneous cooler or freezer stocks.

⁸ Includes ears, tails, feet, neckbones and snouts.

**Public General Warehouses: Cold Storage Space Occupied
by Region and United States, April 2000**

Region	Cooler				Freezer			
	Usable Space	Usable Space Occupied			Usable Space	Usable Space Occupied		
		Apr 30 2000	Apr 30 1999	Mar 31 2000		Apr 30 2000	Apr 30 1999	Mar 31 2000
	<i>1,000 Cu Ft</i>	<i>Percent</i>	<i>Percent</i>	<i>Percent</i>	<i>1,000 Cu Ft</i>	<i>Percent</i>	<i>Percent</i>	<i>Percent</i>
New England	2,377	63	65	60	20,233	74	81	80
Middle Atlantic	35,777	74	56	54	96,811	79	77	79
E. North Central	52,769	54	44	39	191,724	59	48	47
W. North Central	45,224	51	41	35	147,543	59	57	57
South Atlantic	49,425	52	46	49	188,977	57	61	59
E. South Central	8,927	53	55	59	64,076	51	44	42
W. South Central	20,766	50	43	43	133,434	70	69	68
Mountain	6,060	81	68	60	56,077	71	55	58
Pacific	40,104	42	32	31	270,972	61	65	64
US	261,429	55	45	43	1,169,847	63	61	60

Cold Storage Regions



**Apples in Cold Storage: By State
and United States, April 2000**

State	All Warehouses		
	Apr 30, 1999	Mar 31, 2000	Apr 30, 2000
	<i>1,000 Pounds</i>	<i>1,000 Pounds</i>	<i>1,000 Pounds</i>
CA	29,751	45,498	28,941
MI	58,357	193,008	127,684
N ENG	2,438	30,287	19,700
NY	81,144	183,960	133,728
OH	2,050	9,045	5,995
OR	9,197	12,807	17,082
PA	68,880	122,455	87,804
VA	41,128	88,505	63,692
WA	1,525,087	1,717,834	1,354,315
WV	19,819	35,296	19,671
Other States	19,849	26,543	25,357
US	1,857,700	2,465,238	1,883,969

Survey Procedures: Questionnaires are mailed about the 24th of each month to all operators on the list of approximately 1,400 public and private cold storage warehouses. In addition, apple data are obtained from special surveys and other sources (State Departments of Agriculture, U.S. Apple Association, etc.). All survey data represent stocks as of the end of the month.

Data are collected from warehouses artificially cooled to a temperature of 50 degrees Fahrenheit or lower, and whose food products are normally stored for 30 days or more. All food items in these facilities are reported regardless of the number of days stored at the time of the report. Also included are specialized storage facilities meeting the 30 day requirement, such as fruit houses, dairy manufacturing plants, frozen fruit, fruit juice, and vegetable processors, and poultry and meat packing plants. Excluded are stocks in space maintained by wholesalers, jobbers, distributors, chain stores, locker plants containing individual lockers, meat packer branch houses, and frozen food processors whose entire inventories are turned over more than once a month.

Estimating Procedures: Data for reporting firms are added to estimates for non-reporting firms to obtain regional and National totals. Estimates for non-reporting firms are obtained by multiplying the previous month's figure by a percent change from the previous month. The percent change is calculated for each item from totals of the current and previous month summed from firms that reported both months.

Revision Policy: Data are revised the following month based on late reports or corrected data. Final figures are published in the annual summary in February of the following year.

Reliability: Reports are received from 900 firms each month which represent about 70 percent of the total capacity. Firms that are not on the list or firms who have never reported are not represented in the data. Monthly data can vary due to different firms reporting month to month. Survey data are also subject to non-sampling errors such as omissions and mistakes in reporting and in processing the data. While these errors cannot be measured directly, they are minimized by carefully reviewing all reported data for consistency and reasonableness.

The next "Cold Storage" report will be released at 3 p.m. ET on June 20, 2000.

The United States Department of Agriculture (USDA) prohibits discrimination in all its programs on the basis of race, color, national origin, gender, religion, age, disability, political beliefs, sexual orientation, and marital or family status. (Not all prohibited bases apply to all programs.) Persons with disabilities who require alternative means for communication of program information (braille, large print, audiotape, etc.) should contact the USDA's TARGET Center at 202-720-2600 (voice and TDD).

To file a complaint of discrimination, write USDA, Director, Office of Civil Rights, Room 326-W, Whitten Building, 14th and Independence Avenue, SW, Washington, D.C., 20250-9410, or call 202-720-5964 (voice or TDD). USDA is an equal opportunity provider and employer.

ACCESS TO REPORTS!!

For your convenience, there are several ways to obtain NASS reports, data products, and services:

INTERNET ACCESS

All NASS reports are available free of charge on the worldwide Internet. For access, connect to the Internet and go to the NASS Home Page at: <http://www.usda.gov/nass/>. Select "Today's Reports" or Publications and then Reports by Calendar or Publications and then Search, by Title or Subject.

E-MAIL SUBSCRIPTION

There are two options for subscribing via e-mail. All NASS reports are available by subscription free of charge direct to your e-mail address. 1) Starting with the NASS Home Page at <http://www.usda.gov/nass/>, click on **Publications**, then click on the **Subscribe by E-mail** button which takes you to the page describing e-mail delivery of reports. Finally, click on **Go to the Subscription Page** and follow the instructions. 2) If you do NOT have Internet access, send an e-mail message to: usda-reports@usda.mannlib.cornell.edu. In the body of the message type the word: **list**.

AUTOFAX ACCESS

NASSFax service is available for some reports from your fax machine. Please call 202-720-2000, using the handset attached to your fax. Respond to the voice prompts. Document 0411 is a list of available reports.

----- PRINTED REPORTS OR DATA PRODUCTS

CALL OUR TOLL-FREE ORDER DESK: 800-999-6779 (U.S. and Canada)
Other areas, please call 703-834-0125 FAX: 703-834-0110
(Visa, MasterCard, check, or money order acceptable for payment.)

ASSISTANCE

For **assistance** with general agricultural statistics or further information about NASS or its products or services, contact the **Agricultural Statistics Hotline** at **800-727-9540**, 7:30 a.m. to 4:00 p.m. ET, or e-mail: nass@nass.usda.gov.