



# Cold Storage

---

Released June 20, 2000, by the National Agricultural Statistics Service (NASS), Agricultural Statistics Board, U.S. Department of Agriculture. For information on "Cold Storage" call Linda Simpson at (202) 720-8784, office hours 7:00 a.m. to 4:30 p.m. ET.

## HIGHLIGHTS

**Frozen food stocks** in refrigerated warehouses on May 31, 2000, were greater than year earlier levels for fruit, red meat, chicken, and potatoes. May 2000 stocks of chicken, at 825 million pounds, broke the previous record May high of 814 million pounds set in 1999. Cooler stocks of pecans and apples were also higher than a year earlier.

Butter stocks were 8 percent above April 2000 and were slightly above a year ago.

**Total red meat supplies** in freezers were 1 percent above April 2000 and 2 percent above May 1999. Frozen pork stocks were 1 percent above last month but were 8 percent below last year. Stocks of pork bellies increased 8 percent from last month but were 37 percent below May 1999 stocks.

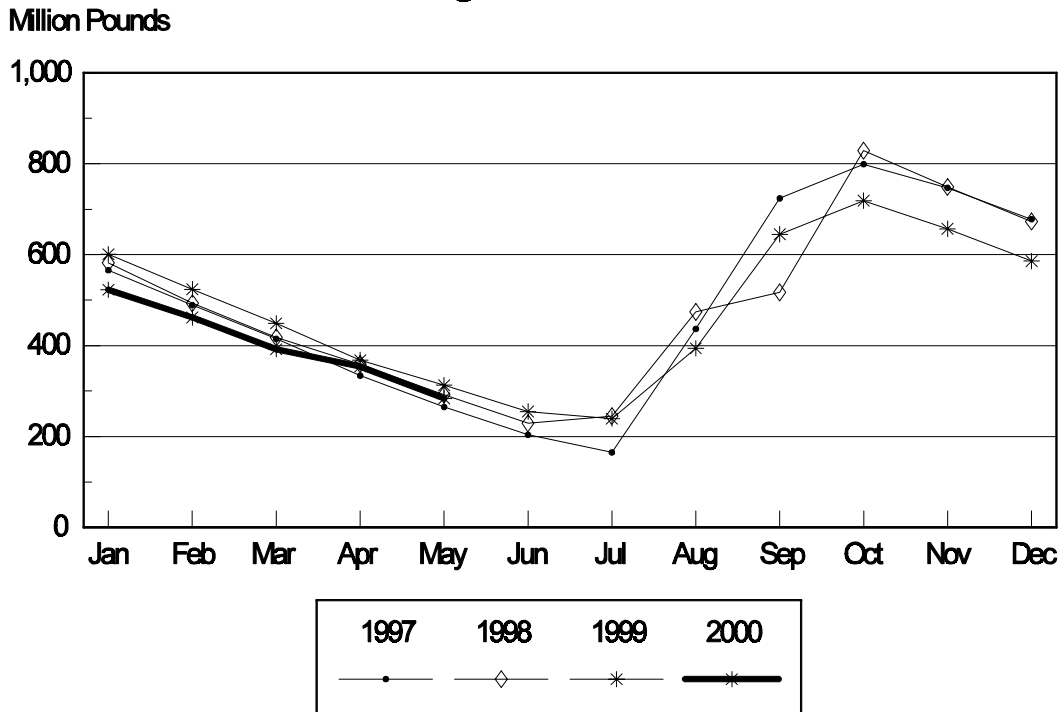
**Total frozen poultry supplies** were up 3 percent from last month but were 1 percent below last year's level. Total stocks of chicken were down 3 percent from last month but were 1 percent above May 1999. Total pounds of turkey in freezers increased 15 percent from last month but were 4 percent below last year.

**Public cooler occupancy** was at 47 percent of capacity, down 7 points from last year. Public freezer occupancy at 60 percent was down 1 percentage point from last year.

## Table of Contents

	Page
Stocks in Cold Storage: By Commodity, United States, May 2000 .....	3
Stocks in Cold Storage: By Commodity, Region, and United States, April 30, 2000 .....	6
Stocks in Cold Storage: By Commodity, Region, and United States, May 31, 2000 .....	10
Public General Warehouses: Cold Storage Space Occupied by Region and United States, May 2000 .....	14
Survey and Estimating Procedures, Revision Policy and Reliability .....	15

### Total Frozen Corn-United States Cold Storage Stocks, 1997-2000



**Stocks in Cold Storage: By Commodity,  
United States, May 2000**

Commodity	Stocks in All Warehouses			Percent of		Public Warehouse Stocks
	May 31, 1999	Apr 30, 2000	May 31, 2000	May 1999	Apr 2000	May 31, 2000
	<i>1,000 Pounds</i>	<i>1,000 Pounds</i>	<i>1,000 Pounds</i>	<i>Percent</i>	<i>Percent</i>	<i>1,000 Lbs</i>
Fresh Fruit						
Apples						
Regular Storage	38,859	139,720	63,625	164	46	
Controlled Atmosphere	1,213,361	1,751,456	1,228,883	101	70	
Total	1,252,220	1,891,176	1,292,508	103	68	24,611
Pears						
Bartlett	3,227	2,386				
Other Varieties	36,139	102,591	68,866	191	67	
Total	39,366	104,977	68,866	175	66	4
Nuts						
Shelled						
Peanuts	645,684	589,348	598,950	93	102	
Pecans	34,122	36,427	36,621	107	101	
Other Shelled	168,548	169,420	156,877	93	93	
Total	848,354	795,195	792,448	93	100	414,827
In-Shell						
Peanuts	27,977	27,328	31,760	114	116	
Pecans	52,255	233,970	211,379	405	90	
Other In-Shell	7,010	5,887	8,183	117	139	
Total	87,242	267,185	251,322	288	94	94,225
Dairy Products						
Butter, Total	136,575	126,785	137,243	100	108	130,683
(Government Owned)	257	229	441	172	193	
Natural Cheese						
American, Total	558,952	547,898	558,255	100	102	
(Government Owned)	13	24	52	400	217	
Swiss	11,978	10,119	10,405	87	103	
Other Natural Cheese	170,359	190,576	197,826	116	104	
Total	741,289	748,593	766,486	103	102	493,724
Eggs, Frozen						
Whites	627	440	465	74	106	
Yolks	738	658	802	109	122	
Whole & Mixed	6,779	5,428	6,311	93	116	
Unclassified	1,541	627	668	43	107	
Total	9,685	7,153	8,246	85	115	7,810
Frozen Poultry						
Chicken						
Broilers (Whole)	32,557	34,995	41,875	129	120	
Hens	10,421	6,762	7,406	71	110	
Other Chicken	770,755	807,598	775,525	101	96	
Total	813,733	849,355	824,806	101	97	
Turkey						
Whole Turkeys	274,067	203,870	249,230	91	122	
Other Turkey	220,210	209,429	227,638	103	109	
Total	494,277	413,299	476,868	96	115	
Ducks	5,447	4,277	4,693	86	110	
Total	1,313,457	1,266,931	1,306,367	99	103	1,208,618

**Stocks in Cold Storage: By Commodity,  
United States, May 2000 (Continued)**

Commodity	Stocks in All Warehouses			Percent of		Public Warehouse Stocks
	May 31, 1999	Apr 30, 2000	May 31, 2000	May 1999	Apr 2000	May 31, 2000
	<i>1,000 Pounds</i>	<i>1,000 Pounds</i>	<i>1,000 Pounds</i>	<i>Percent</i>	<i>Percent</i>	<i>1,000 Lbs</i>
Frozen Fruit						
Apples	84,021	87,658	83,421	99	95	
Apricots	3,451	4,570	3,806	110	83	
Blackberries, Total	10,277	18,511	12,135	118	66	
IQF	5,614	13,461	7,829	139	58	
Pails and Tubs	1,816	1,360	1,213	67	89	
Barrels, 400 lbs net	700	2,098	1,570	224	75	
Concentrate	2,147	1,592	1,523	71	96	
Blueberries	28,603	30,695	24,234	85	79	
Boysenberries	2,396	3,618	3,203	134	89	
Cherries, Tart (RSP)	70,786	78,395	66,671	94	85	
Cherries, Tart (Juice)	2,926	1,411	1,113	38	79	
Cherries, Sweet	10,606	10,333	9,950	94	96	
Grapes	2,388	3,559	3,478	146	98	
Peaches	26,964	36,778	28,637	106	78	
Raspberries, Black	162	565	540	333	96	
Raspberries, Red, Total	15,396	35,119	30,067	195	86	
IQF	5,758	12,657	10,443	181	83	
Pails and Tubs	4,214	10,225	9,491	225	93	
Barrels, 400 lbs net	4,257	10,578	8,572	201	81	
Concentrate	1,167	1,659	1,561	134	94	
Strawberries, Total	205,717	231,716	343,740	167	148	
Other Frozen Fruit	337,043	474,383	402,466	119	85	
Total	800,736	1,017,311	1,013,461	127	100	667,663
Frozen Juice						
Orange Juice Conc. <sup>1</sup>	2,115,553	1,818,585	1,962,541	93	108	
(Gallon Equivalent)	213,779	183,770	198,317			
Other Juice Concentrate	436,333	335,585	334,092	77	100	
Total	2,551,886	2,154,170	2,296,633	90	107	234,587
Frozen Vegetables						
Asparagus	8,122	10,470	13,629	168	130	
Limas, Fordhook	6,012	6,756	5,266	88	78	
Limas, Baby	38,862	35,467	32,046	82	90	
Green Beans, Reg. Cut	73,668	79,025	63,442	86	80	
Green Beans, Fr. Style	31,196	17,527	15,757	51	90	
Broccoli, Spears	44,839	42,507	36,197	81	85	
Broccoli, Chopped & Cut	135,920	121,493	106,557	78	88	
Brussels Sprouts	15,139	20,113	16,146	107	80	
Carrots, Diced	54,361	62,199	53,383	98	86	
Carrots, Other	124,530	161,090	146,154	117	91	
Cauliflower	38,802	51,171	42,829	110	84	
Corn, Cut	181,484	189,997	154,090	85	81	
Corn, Cob	131,303	163,630	129,540	99	79	
Mixed Vegetables	48,036	50,592	48,704	101	96	
Okra	38,322	29,606	42,280	110	143	
Onion Rings	15,392	13,772	13,314	86	97	
Onions, Other	35,809	52,691	55,677	155	106	
Blackeye Peas	5,562	3,144	2,836	51	90	
Green Peas	130,427	132,219	123,597	95	93	
Peas & Carrots Mixed	10,602	7,955	7,788	73	98	
Spinach	161,468	98,019	105,647	65	108	
Squash, Summer/Zucchini	48,898	37,189	38,388	79	103	
Southern Greens	42,229	34,263	32,483	77	95	
Other Vegetables	225,604	264,125	242,384	107	92	
Total	1,646,587	1,685,020	1,528,134	93	91	957,548

See footnotes at end of table.

--continued

**Stocks in Cold Storage: By Commodity,  
United States, May 2000 (Continued)**

Commodity	Stocks in All Warehouses			Percent of		Public Warehouse Stocks
	May 31, 1999	Apr 30, 2000	May 31, 2000	May 1999	Apr 2000	May 31, 2000
	<i>1,000 Pounds</i>	<i>1,000 Pounds</i>	<i>1,000 Pounds</i>	<i>Percent</i>	<i>Percent</i>	<i>1,000 Lbs</i>
Potatoes						
French Fries	980,718	967,474	991,491	101	102	
Other Frozen	274,803	271,744	265,616	97	98	
Total	1,255,521	1,239,218	1,257,107	100	101	909,149
Meat						
Frozen Beef						
Boneless <sup>2</sup>	269,349	314,348	319,312	119	102	
Beef Cuts <sup>3</sup>	37,390	52,710	48,977	131	93	
Total	306,739	367,058	368,289	120	100	365,544
(Government Owned)	3,583	4,089	2,237	62	55	
Frozen Pork						
Picnics, Bone-in	8,450	8,577	7,912	94	92	
Hams, Total	117,818	86,647	99,317	84	115	92,878
Bone-in	67,571	48,819	55,920	83	115	54,191
Boneless <sup>4</sup>	50,247	37,828	43,397	86	115	38,687
Bellies	108,257	63,414	68,244	63	108	
Loins, Total	27,127	24,088	23,861	88	99	21,163
Bone-in	16,036	14,510	14,410	90	99	
Boneless <sup>5</sup>	11,091	9,578	9,451	85	99	
Ribs <sup>6</sup>	63,305	74,181	60,023	95	81	
Butts	14,101	9,968	11,772	83	118	
Trimmings <sup>7</sup>	60,253	56,134	48,926	81	87	
Other <sup>8</sup>	99,366	97,064	97,298	98	100	
Variety Meats <sup>9</sup>	60,430	71,924	73,785	122	103	
Unclassified <sup>10</sup>	13,595	29,787	34,639	255	116	
Total	572,702	521,784	525,777	92	101	456,245
(Government Owned)	6,030	5,521	3,888	64	70	
Other						
Veal	3,590	3,847	4,236	118	110	
Lamb & Mutton	12,313	13,313	13,127	107	99	
Total	15,903	17,160	17,363	109	101	16,676
Canned						
Canned Hams	4,945	5,440	6,383	129	117	
Other Canned Meat	885	464	759	86	164	
Total	5,830	5,904	7,142	123	121	4,077
Total	901,174	911,906	918,571	102	101	842,542
Miscellaneous						
Cooler	708,830	723,611	634,537	90	88	449,874
Freezer	1,950,678	2,109,649	2,066,300	106	98	1,994,127
Total	2,659,508	2,833,260	2,700,837	102	95	2,444,001
Commodities						
Stored in Coolers	3,683,131	4,536,641	3,813,309	104	84	1,481,342
Stored in Freezers	10,560,469	10,512,239	10,524,920	100	100	6,948,650
Total	14,243,600	15,048,880	14,338,229	101	95	8,429,992

<sup>1</sup> Adjusted to 42.0 degrees Brix equivalent (9.896 pounds per gallon).

<sup>2</sup> Includes all boxed boneless beef, such as ground beef, roasts, steaks, loins, strips, rounds, trimmings, etc. Variety meats (edible offal), such as tongues, livers, hearts, kidneys, and other organs removed from slaughtered beef, are included as miscellaneous freezer stocks.

<sup>3</sup> Includes all boxed primal beef cuts, bone-in.

<sup>4</sup> Includes full ham, bone removed and individual muscles separated.

<sup>5</sup> Includes pork tenderloins.

<sup>6</sup> Includes spareribs and backribs.

<sup>7</sup> Includes 42% regular trimmings, 72% special trimmings, boneless picnic meat, jowls, neckbone trimmings, blade, cheek, head, and shank meat, etc. Packaged bacon, sausage, and processed items, such as hot dogs and luncheon meats, are included in miscellaneous cooler or freezer stocks.

<sup>8</sup> Includes ears, tails, feet, neckbones and snouts.

<sup>9</sup> Includes tongues, kidneys, livers, stomachs, hearts, chitterlings, salivary glands, and other organs removed from slaughtered hogs.

<sup>10</sup> Includes pork unable to be classified elsewhere in this report.

**Stocks in Cold Storage: By Commodity, Region,  
and United States, April 30, 2000**

Commodity	New England	Middle Atlantic	East North Central	West North Central	South Atlantic
	<i>1,000 Pounds</i>	<i>1,000 Pounds</i>	<i>1,000 Pounds</i>	<i>1,000 Pounds</i>	<i>1,000 Pounds</i>
Total Fresh Apples	19,700	222,297	136,052		106,605
Nuts					
Shelled					
Peanuts		22	245	36	387,341
Pecans <sup>1</sup>		119			13,830
In-Shell					
Pecans <sup>1</sup>					48,984
Dairy Products					
Natural Cheese					
American, Total	20,438	44,634	273,807	117,989	4,426
Other Natural Cheese	658	7,864	98,566	71,525	518
Frozen Poultry					
Broilers (Whole)	101	351	856	964	9,476
Hens		63	602	1,364	1,300
Other Chicken	1,891	25,222	17,872	29,737	223,682
Total	1,992	25,636	19,330	32,065	234,458
Whole Turkeys	4,399	15,104	16,603	30,452	40,269
Other Turkey	294	14,723	15,898	65,334	53,177
Total	4,693	29,827	32,501	95,786	93,446
Ducks	40	134	3,922	4	12
Total	6,725	55,597	55,753	127,855	327,916
Frozen Fruit					
Apples	25	24,325	45,863	132	298
Blueberries	7,381	3,621	13,348	130	126
Cherries, Tart (RSP)	23	3,734	67,478	90	111
Cherries, Sweet		401	7,509	65	7
Peaches	20	1,820	2,825	57	1,501
Raspberries, Red	224	1,454	783	100	96
Strawberries, Total	67	3,131	3,902	2,274	1,026
Other Frozen Fruit	124,332	25,748	248,093	746	1,931

See footnotes at end of table.

--continued

**Stocks in Cold Storage: By Commodity, Region,  
and United States, April 30, 2000 (continued)**

Commodity	East South Central	West South Central	Mountain	Pacific	US Total
	<i>1,000 Pounds</i>	<i>1,000 Pounds</i>	<i>1,000 Pounds</i>	<i>1,000 Pounds</i>	<i>1,000 Pounds</i>
Total Fresh Apples		4,028	2,154	1,400,340	1,891,176
Nuts					
Shelled					
Peanuts	60,348	140,887	142	327	589,348
Pecans <sup>1</sup>	1,182	21,123		173	36,427
In-Shell					
Pecans <sup>1</sup>	2,946	182,040			233,970
Dairy Products					
Natural Cheese					
American, Total		371	11,179	75,054	547,898
Other Natural Cheese	188	466	261	10,530	190,576
Frozen Poultry					
Broilers (Whole)	1,721	19,104	584	1,838	34,995
Hens	871	537	228	1,797	6,762
Other Chicken	160,598	294,791	2,458	51,347	807,598
Total	163,190	314,432	3,270	54,982	849,355
Whole Turkeys	2,565	53,745	7,962	32,771	203,870
Other Turkey	897	31,853	11,844	15,409	209,429
Total	3,462	85,598	19,806	48,180	413,299
Ducks	2	3	1	159	4,277
Total	166,654	400,033	23,077	103,321	1,266,931
Frozen Fruit					
Apples	140	599	222	16,054	87,658
Blueberries	78	378	94	5,539	30,695
Cherries, Tart (RSP)	42	219	1,339	5,359	78,395
Cherries, Sweet	3	45	473	1,830	10,333
Peaches	49	532	8	29,966	36,778
Raspberries, Red	118	1,002	7	31,335	35,119
Strawberries, Total	2,891	31,923	603	185,899	231,716
Other Frozen Fruit	237	8,593	1,012	63,691	474,383

See footnotes at end of table.

--continued

**Stocks in Cold Storage: By Commodity, Region,  
and United States, April 30, 2000 (continued)**

Commodity	New England	Middle Atlantic	East North Central	West North Central	South Atlantic
	<i>1,000 Pounds</i>	<i>1,000 Pounds</i>	<i>1,000 Pounds</i>	<i>1,000 Pounds</i>	<i>1,000 Pounds</i>
Frozen Juice					
Orange Juice Conc. <sup>2</sup>	381		659	83	1,739,103
Other Juice Concentrate	60	11,213	11,817	2,269	164,592
Frozen Vegetables <sup>3</sup>					
Asparagus		183	3,280	45	268
Limas, Fordhook		593	664	142	2,230
Limas, Baby		3,979	3,854	508	6,853
Green Beans, Reg. Cut		11,095	23,725	838	2,284
Green Beans, Fr. Style		3,568	3,643	76	337
Broccoli, Spears		4,918	4,297	576	2,936
Broccoli, Chopped & Cut		8,770	14,731	3,817	7,040
Brussels Sprouts		1,982	1,382	522	574
Carrots, Diced		3,127	16,501	883	2,746
Carrots, Other		10,239	14,804	1,249	5,611
Cauliflower		2,268	4,294	1,828	1,136
Corn, Cut		15,390	31,096	10,200	5,332
Corn, Cob		4,517	24,141	14,234	4,367
Mixed Vegetables		3,564	7,764	1,583	3,499
Okra		1,197	691	1,013	7,107
Onion Rings		1,084	8,382	1,803	790
Onions, Other		5,604	5,198	445	1,523
Blackeye Peas		153	337	9	1,295
Green Peas		15,896	15,369	6,924	4,151
Peas & Carrots Mixed		657	749	47	399
Spinach		7,180	3,919	944	7,822
Squash, Summer/Zucchini		3,336	9,320	594	6,211
Southern Greens		2,207	354	115	17,078
Other Vegetables		25,156	22,997	12,380	31,502
Potatoes					
French Fries	36,658	40,848	67,385	108,200	18,276
Other Frozen	7,721	9,838	34,406	6,389	4,546
Meat					
Frozen Beef					
Boneless	2,628	41,359	32,261	84,053	30,161
Beef Cuts	683	3,207	6,465	10,456	2,815
Frozen Pork					
Ribs	539	1,582	19,284	32,985	8,486
Trimming	368	2,256	15,658	29,591	6,149
Other	3,190	2,966	22,365	35,617	7,593
Other					
Veal	141	387	1,423	535	74
Lamb & Mutton	455	3,969	1,575	497	687

See footnotes at end of table.

--continued



**Stocks in Cold Storage: By Commodity, Region,  
and United States, April 30, 2000 (continued)**

Commodity	East South Central	West South Central	Mountain	Pacific	US Total
	<i>1,000 Pounds</i>	<i>1,000 Pounds</i>	<i>1,000 Pounds</i>	<i>1,000 Pounds</i>	<i>1,000 Pounds</i>
Frozen Juice					
Orange Juice Concentrate	660	8,966	1,866	66,867	1,818,585
Other Juice Concentrate	1,822	19,445	775	123,592	335,585
Frozen Vegetables <sup>3</sup>					
Asparagus		696	182	5,816	10,470
Limas, Fordhook		217	93	2,817	6,756
Limas, Baby		731	5,570	13,972	35,467
Green Beans, Reg. Cut		979	349	39,755	79,025
Green Beans, Fr. Style		180	145	9,578	17,527
Broccoli, Spears		17,247	4	12,529	42,507
Broccoli, Chopped & Cut		33,794	1,588	51,753	121,493
Brussels Sprouts		1,161	122	14,370	20,113
Carrots, Diced		2,713	615	35,614	62,199
Carrots, Other		16,919	1,285	110,983	161,090
Cauliflower		15,366	745	25,534	51,171
Corn, Cut		2,777	271	124,931	189,997
Corn, Cob		2,392	56	113,923	163,630
Mixed Vegetables		7,875	51	26,256	50,592
Okra		18,977		621	29,606
Onion Rings		479	977	257	13,772
Onions, Other		2,586	7,988	29,347	52,691
Blackeye Peas		1,202		148	3,144
Green Peas		2,898	8,294	78,687	132,219
Peas & Carrots Mixed		563	1	5,539	7,955
Spinach		16,075	11,999	50,080	98,019
Squash, Summer/Zucchini		4,060	849	12,819	37,189
Southern Greens		14,013		496	34,263
Other Vegetables		35,710	2,849	133,531	264,125
Potatoes					
French Fries	1,022	5,487	264,455	425,143	967,474
Other Frozen	1,350	7,801	50,130	149,563	271,744
Meat					
Frozen Beef					
Boneless <sup>4</sup>	3,131	52,158	5,652	62,945	314,348
Beef Cuts <sup>5</sup>	404	8,399	7,940	12,341	52,710
Frozen Pork					
Ribs <sup>6</sup>	3,795	2,865	4	4,641	74,181
Trimmings <sup>7</sup>	279	1,582	93	158	56,134
Other <sup>8</sup>	7,258	10,672	129	7,274	97,064
Other					
Veal		31	14	1,242	3,847
Lamb & Mutton		828	1,200	4,102	13,313

<sup>1</sup> East North Central combined with South Atlantic. Mountain and West North Central combined with West South Central.

<sup>2</sup> Middle Atlantic combined with South Atlantic.

<sup>3</sup> New England combined with Middle Atlantic. East South Central combined with South Atlantic.

<sup>4</sup> Includes all boxed boneless beef, such as ground beef, roasts, steaks, loins, strips, rounds, trimmings, etc. Variety meats (edible offal), such as tongues, livers, hearts, kidneys, and other organs removed from slaughtered beef, are included as miscellaneous freezer stocks.

<sup>5</sup> Includes all boxed primal beef cuts, bone-in.

<sup>6</sup> Includes spareribs and backribs.

<sup>7</sup> Includes 42% regular trimmings, 72% special trimmings, boneless picnic meat, jowls, neckbone trimmings, blade, cheek, head, and shank meat, etc. Packaged bacon, sausage, and processed items, such as hot dogs and luncheon meats, are included in miscellaneous cooler or freezer stocks.

<sup>8</sup> Includes ears, tails, feet, neckbones and snouts.

**Stocks in Cold Storage: By Commodity, Region,  
and United States, May 31, 2000**

Commodity	New England	Middle Atlantic	East North Central	West North Central	South Atlantic
	<i>1,000 Pounds</i>	<i>1,000 Pounds</i>	<i>1,000 Pounds</i>	<i>1,000 Pounds</i>	<i>1,000 Pounds</i>
Total Fresh Apples	8,710	145,610	78,919		57,138
Nuts					
Shelled					
Peanuts		4	256	38	390,060
Pecans <sup>1</sup>		93			13,042
In-Shell					
Pecans <sup>1</sup>					38,054
Dairy Products					
Natural Cheese					
American, Total	21,338	45,929	280,509	119,799	6,162
Other Natural Cheese	798	8,287	103,180	73,643	427
Frozen Poultry					
Broilers (Whole)	121	363	800	1,170	12,140
Hens	271	58	612	1,366	1,665
Other Chicken	1,270	23,424	18,270	29,259	208,628
Total	1,662	23,845	19,682	31,795	222,433
Whole Turkeys	5,749	17,764	20,014	34,438	56,742
Other Turkey	275	15,596	16,299	68,180	57,157
Total	6,024	33,360	36,313	102,618	113,899
Ducks		124	4,329	4	13
Total	7,686	57,329	60,324	134,417	336,345
Frozen Fruit					
Apples	29	21,445	41,762	147	267
Blueberries	6,656	2,431	9,689	100	221
Cherries, Tart (RSP)	20	2,698	57,792	81	91
Cherries, Sweet		528	6,392	62	7
Peaches	16	1,595	2,415	44	255
Raspberries, Red	221	1,418	702	87	292
Strawberries, Total	72	3,864	5,217	2,486	913
Other Frozen Fruit	34,147	37,468	268,081	741	1,765

See footnotes at end of table.

--continued

**Stocks in Cold Storage: By Commodity, Region,  
and United States, May 31, 2000 (continued)**

Commodity	East South Central	West South Central	Mountain	Pacific	US Total
	<i>1,000 Pounds</i>	<i>1,000 Pounds</i>	<i>1,000 Pounds</i>	<i>1,000 Pounds</i>	<i>1,000 Pounds</i>
Total Fresh Apples		2,028	1,439	998,664	1,292,508
Nuts					
Shelled					
Peanuts	58,517	149,581	151	343	598,950
Pecans <sup>1</sup>	1,297	21,991		198	36,621
In-Shell					
Pecans <sup>1</sup>	2,801	170,524			211,379
Dairy Products					
Natural Cheese					
American, Total		458	8,569	75,491	558,255
Other Natural Cheese	194	518	310	10,469	197,826
Frozen Poultry					
Broilers (Whole)	2,231	22,164	645	2,241	41,875
Hens	1,031	416	246	1,741	7,406
Other Chicken	160,191	283,035	2,118	49,330	775,525
Total	163,453	305,615	3,009	53,312	824,806
Whole Turkeys	5,227	60,801	8,488	40,007	249,230
Other Turkey	2,653	33,265	12,779	21,434	227,638
Total	7,880	94,066	21,267	61,441	476,868
Ducks	2	1	1	219	4,693
Total	171,335	399,682	24,277	114,972	1,306,367
Frozen Fruit					
Apples	119	1,148	202	18,302	83,421
Blueberries	74	200	79	4,784	24,234
Cherries, Tart (RSP)	39	146	1,192	4,612	66,671
Cherries, Sweet	3	35	557	2,366	9,950
Peaches	50	275	110	23,877	28,637
Raspberries, Red	114	826	1	26,406	30,067
Strawberries, Total	3,791	40,081	431	286,885	343,740
Other Frozen Fruit	302	7,194	1,031	51,737	402,466

See footnotes at end of table.

--continued

**Stocks in Cold Storage: By Commodity, Region,  
and United States, May 31, 2000 (continued)**

Commodity	New England	Middle Atlantic	East North Central	West North Central	South Atlantic
	<i>1,000 Pounds</i>	<i>1,000 Pounds</i>	<i>1,000 Pounds</i>	<i>1,000 Pounds</i>	<i>1,000 Pounds</i>
Frozen Juice					
Orange Juice Conc. <sup>2</sup>	134		748	91	1,878,940
Other Juice Concentrate	59	11,504	11,175	2,205	167,254
Frozen Vegetables <sup>3</sup>					
Asparagus		268	5,430	63	311
Limas, Fordhook		514	560	112	1,981
Limas, Baby		2,830	4,170	425	5,832
Green Beans, Reg. Cut		7,890	18,031	879	2,524
Green Beans, Fr. Style		2,803	3,329	81	672
Broccoli, Spears		4,432	3,635	263	2,441
Broccoli, Chopped & Cut		8,429	12,447	4,126	6,371
Brussels Sprouts		1,541	1,114	479	554
Carrots, Diced		2,851	13,916	747	1,948
Carrots, Other		9,612	13,235	1,077	4,814
Cauliflower		1,840	3,974	1,650	1,261
Corn, Cut		12,532	25,937	7,941	5,110
Corn, Cob		3,187	19,600	9,066	4,044
Mixed Vegetables		3,080	7,517	1,655	2,932
Okra		1,340	941	1,502	8,841
Onion Rings		905	7,831	2,184	698
Onions, Other		4,919	5,127	483	3,290
Blackeye Peas		144	302	12	949
Green Peas		13,656	14,012	6,748	7,642
Peas & Carrots Mixed		428	668	50	625
Spinach		15,586	4,170	1,571	7,858
Squash, Summer/Zucchini		3,038	8,841	510	6,277
Southern Greens		874	353	26	16,995
Other Vegetables		25,912	21,896	10,749	30,211
Potatoes					
French Fries	29,215	41,222	72,308	112,056	21,167
Other Frozen	7,086	9,087	36,242	6,108	4,440
Meat					
Frozen Beef					
Boneless <sup>4</sup>	2,487	41,926	32,981	82,006	35,564
Beef Cuts <sup>5</sup>	764	3,121	6,361	11,115	3,335
Frozen Pork					
Ribs <sup>6</sup>	435	1,249	14,846	26,656	7,549
Trimmings <sup>7</sup>	473	1,988	14,030	25,500	5,320
Other <sup>8</sup>	3,185	2,792	19,039	34,367	13,663
Other					
Veal	97	366	1,334	539	81
Lamb & Mutton	402	4,364	1,601	711	1,026

See footnotes at end of table.

--continued

**Stocks in Cold Storage: By Commodity, Region,  
and United States, May 31, 2000 (continued)**

Commodity	East South Central	West South Central	Mountain	Pacific	US Total
	<i>1,000 Pounds</i>	<i>1,000 Pounds</i>	<i>1,000 Pounds</i>	<i>1,000 Pounds</i>	<i>1,000 Pounds</i>
Frozen Juice					
Orange Juice Concentrate	713	5,854	2,254	73,807	1,962,541
Other Juice Concentrate	1,735	18,478	831	120,851	334,092
Frozen Vegetables <sup>3</sup>					
Asparagus		628	520	6,409	13,629
Limas, Fordhook		198	169	1,732	5,266
Limas, Baby		696	4,331	13,762	32,046
Green Beans, Reg. Cut		1,221	346	32,551	63,442
Green Beans, Fr. Style		171	107	8,594	15,757
Broccoli, Spears		13,554	45	11,827	36,197
Broccoli, Chopped & Cut		27,827	1,736	45,621	106,557
Brussels Sprouts		785	96	11,577	16,146
Carrots, Diced		2,692	592	30,637	53,383
Carrots, Other		15,299	474	101,643	146,154
Cauliflower		12,812	114	21,178	42,829
Corn, Cut		2,354	3,384	96,832	154,090
Corn, Cob		2,523	66	91,054	129,540
Mixed Vegetables		7,503	41	25,976	48,704
Okra		28,943		713	42,280
Onion Rings		696	798	202	13,314
Onions, Other		4,621	8,354	28,883	55,677
Blackeye Peas		1,243		186	2,836
Green Peas		3,190	6,799	71,550	123,597
Peas & Carrots Mixed		688	1	5,328	7,788
Spinach		15,171	11,035	50,256	105,647
Squash, Summer/Zucchini		5,446	1,119	13,157	38,388
Southern Greens		13,731	6	498	32,483
Other Vegetables		37,581	2,936	113,099	242,384
Potatoes					
French Fries	2,859	6,469	282,729	423,466	991,491
Other Frozen	1,497	7,630	56,126	137,400	265,616
Meat					
Frozen Beef					
Boneless <sup>4</sup>	2,866	53,083	5,612	62,787	319,312
Beef Cuts <sup>5</sup>	522	7,663	4,114	11,982	48,977
Frozen Pork					
Ribs <sup>6</sup>	3,201	2,216	22	3,849	60,023
Trimmings <sup>7</sup>	247	1,119	86	163	48,926
Other <sup>8</sup>	8,321	9,243	167	6,521	97,298
Other					
Veal		13	12	1,794	4,236
Lamb & Mutton		1,276	932	2,815	13,127

<sup>1</sup> East North Central combined with South Atlantic. Mountain and West North Central Combined with West South Central.

<sup>2</sup> Middle Atlantic combined with South Atlantic.

<sup>3</sup> New England combined with Middle Atlantic. East South Central combined with South Atlantic.

<sup>4</sup> Includes all boxed boneless beef, such as ground beef, roasts, steaks, loins, strips, rounds, trimmings, etc. Variety meats (edible offal), such as tongues, livers, hearts, kidneys, and other organs removed from slaughtered beef, are included as miscellaneous freezer stocks.

<sup>5</sup> Includes all boxed primal beef cuts, bone-in.

<sup>6</sup> Includes spareribs and backribs.

<sup>7</sup> Includes 42% regular trimmings, 72% special trimmings, boneless picnic meat, jowls, neckbone trimmings, blade, cheek, head, and shank meat, etc. Packaged bacon, sausage, and processed items, such as hot dogs and luncheon meats, are included in miscellaneous cooler or freezer stocks.

<sup>8</sup> Includes ears, tails, feet, neckbones and snouts.

**Public General Warehouses: Cold Storage Space Occupied  
by Region and United States, May 2000**

Region	Cooler				Freezer			
	Usable Space	Usable Space Occupied			Usable Space	Usable Space Occupied		
		May 31 2000	May 31 1999	Apr 30 2000		May 31 2000	May 31 1999	Apr 30 2000
	<i>1,000 Cu Ft</i>	<i>Percent</i>	<i>Percent</i>	<i>Percent</i>	<i>1,000 Cu Ft</i>	<i>Percent</i>	<i>Percent</i>	<i>Percent</i>
New England	2,366	55	64	67	20,233	70	80	77
Middle Atlantic	35,623	74	58	60	96,870	77	80	79
E. North Central	56,276	51	42	47	191,245	55	47	46
W. North Central	45,480	51	39	44	147,759	56	63	65
South Atlantic	48,224	52	48	51	180,573	56	58	60
E. South Central	8,928	53	56	51	64,031	48	43	41
W. South Central	20,766	47	43	44	133,373	69	68	66
Mountain	6,059	76	50	45	56,028	69	60	55
Pacific	41,365	42	33	32	275,913	61	63	61
US	265,087	54	44	47	1,166,025	61	61	60

## Cold Storage Regions



**Survey Procedures:** Questionnaires are mailed about the 24th of each month to all operators on the list of approximately 1,400 public and private cold storage warehouses. In addition, apple data are obtained from special surveys and other sources (State Departments of Agriculture, U.S. Apple Association, etc.). All survey data represent stocks as of the end of the month.

Data are collected from warehouses artificially cooled to a temperature of 50 degrees Fahrenheit or lower, and whose food products are normally stored for 30 days or more. All food items in these facilities are reported regardless of the number of days stored at the time of the report. Also included are specialized storage facilities meeting the 30 day requirement, such as fruit houses, dairy manufacturing plants, frozen fruit, fruit juice, and vegetable processors, and poultry and meat packing plants. Excluded are stocks in space maintained by wholesalers, jobbers, distributors, chain stores, locker plants containing individual lockers, meat packer branch houses, and frozen food processors whose entire inventories are turned over more than once a month.

**Estimating Procedures:** Data for reporting firms are added to estimates for non-reporting firms to obtain regional and National totals. Estimates for non-reporting firms are obtained by multiplying the previous month's figure by a percent change from the previous month. The percent change is calculated for each item from totals of the current and previous month summed from firms that reported both months.

**Revision Policy:** Data are revised the following month based on late reports or corrected data. Final figures are published in the annual summary in February of the following year.

**Reliability:** Reports are received from 900 firms each month which represent about 70 percent of the total capacity. Firms that are not on the list or firms who have never reported are not represented in the data. Monthly data can vary due to different firms reporting month to month. Survey data are also subject to non-sampling errors such as omissions and mistakes in reporting and in processing the data. While these errors cannot be measured directly, they are minimized by carefully reviewing all reported data for consistency and reasonableness.

The next "Cold Storage" report will be released at 3 p.m. ET on July 21, 2000.

The United States Department of Agriculture (USDA) prohibits discrimination in all its programs on the basis of race, color, national origin, gender, religion, age, disability, political beliefs, sexual orientation, and marital or family status. (Not all prohibited bases apply to all programs.) Persons with disabilities who require alternative means for communication of program information (braille, large print, audiotape, etc.) should contact the USDA's TARGET Center at 202-720-2600 (voice and TDD).

To file a complaint of discrimination, write USDA, Director, Office of Civil Rights, Room 326-W, Whitten Building, 14th and Independence Avenue, SW, Washington, D.C., 20250-9410, or call 202-720-5964 (voice or TDD). USDA is an equal opportunity provider and employer.

## ACCESS TO REPORTS!!

---

For your convenience, there are several ways to obtain NASS reports, data products, and services:

### INTERNET ACCESS

All NASS reports are available free of charge on the worldwide Internet. For access, connect to the Internet and go to the NASS Home Page at: <http://www.usda.gov/nass/>. Select "Today's Reports" or Publications and then Reports by Calendar or Publications and then Search, by Title or Subject.

### E-MAIL SUBSCRIPTION

There are two options for subscribing via e-mail. All NASS reports are available by subscription free of charge direct to your e-mail address. 1) Starting with the NASS Home Page at <http://www.usda.gov/nass/>, click on **Publications**, then click on the **Subscribe by E-mail** button which takes you to the page describing e-mail delivery of reports. Finally, click on **Go to the Subscription Page** and follow the instructions. 2) If you do NOT have Internet access, send an e-mail message to: [usda-reports@usda.mannlib.cornell.edu](mailto:usda-reports@usda.mannlib.cornell.edu). In the body of the message type the word: **list**.

### AUTOFAX ACCESS

NASSFax service is available for some reports from your fax machine. Please call 202-720-2000, using the handset attached to your fax. Respond to the voice prompts. Document 0411 is a list of available reports.

-----  
**PRINTED REPORTS OR DATA PRODUCTS**

**CALL OUR TOLL-FREE ORDER DESK: 800-999-6779 (U.S. and Canada)**  
**Other areas, please call 703-834-0125      FAX: 703-834-0110**  
**(Visa, MasterCard, check, or money order acceptable for payment.)**  
-----

### ASSISTANCE

For **assistance** with general agricultural statistics or further information about NASS or its products or services, contact the **Agricultural Statistics Hotline** at **800-727-9540**, 7:30 a.m. to 4:00 p.m. ET, or e-mail: [nass@nass.usda.gov](mailto:nass@nass.usda.gov).