



Cold Storage

Released July 21, 2000, by the National Agricultural Statistics Service (NASS), Agricultural Statistics Board, U.S. Department of Agriculture. For information on "Cold Storage" call Linda Simpson at (202) 720-8784, office hours 7:00 a.m. to 4:30 p.m. ET.

HIGHLIGHTS

Frozen food stocks in refrigerated warehouses on June 30, 2000, were greater than year earlier levels for fruit, red meat and orange juice concentrate. Cooler stocks of pecans and apples were also higher than a year earlier.

Butter stocks were 5 percent above May 2000 and 20 percent above a year ago.

Total red meat supplies in freezers were 4 percent below May 2000 but 5 percent above June 1999. Frozen pork stocks were 8 percent below last month and 9 percent below last year. Stocks of pork bellies decreased 12 percent from last month and 35 percent from June 1999 stocks.

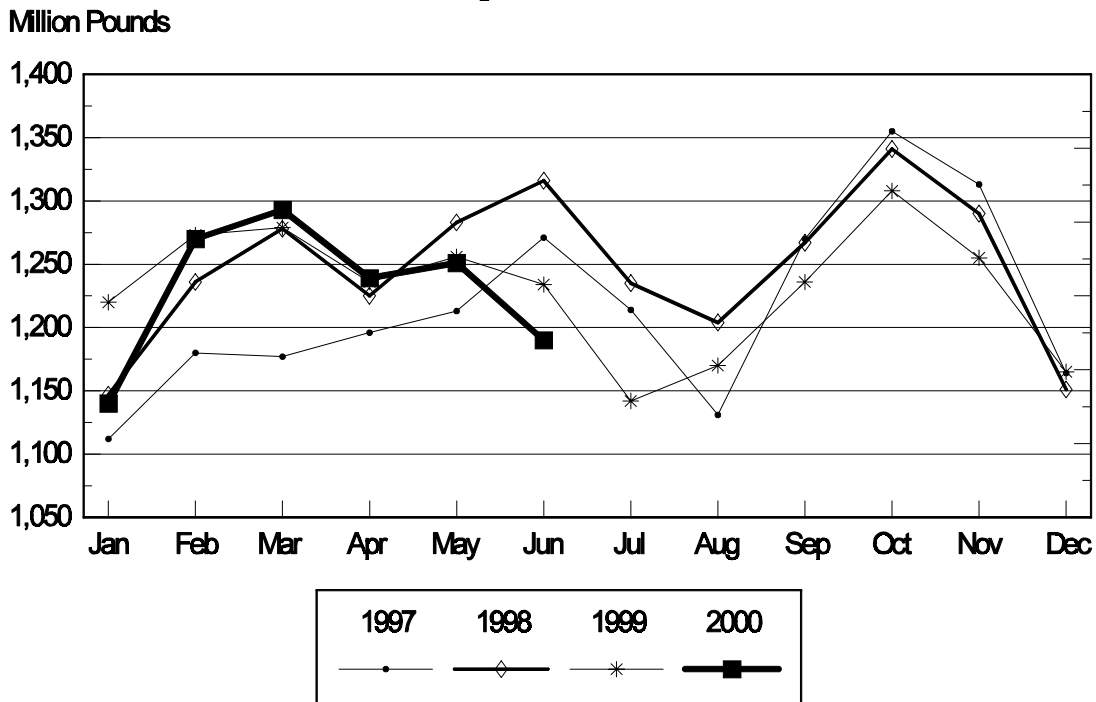
Total frozen poultry supplies were up 2 percent from last month but were 5 percent below last year's level. Total stocks of chicken were down 1 percent from last month and were 3 percent below June 1999. Total pounds of turkey in freezers increased 5 percent from last month but were 10 percent below last year.

Public cooler occupancy was at 45 percent of capacity, down 10 points from last year. Public freezer occupancy at 59 percent was down 3 percentage points from last year.

Table of Contents

	Page
Stocks in Cold Storage: By Commodity, United States, June 2000	3
Stocks in Cold Storage: By Commodity, Region, and United States, May 31, 2000	6
Stocks in Cold Storage: By Commodity, Region, and United States, June 30, 2000	10
Public General Warehouses: Cold Storage Space Occupied by Region and United States, June 2000	14
Survey and Estimating Procedures, Revision Policy and Reliability	15

Total Frozen Potatoes-United States Cold Storage Stocks, 1997-2000



**Stocks in Cold Storage: By Commodity,
United States, June 2000**

Commodity	Stocks in All Warehouses			Percent of		Public Warehouse Stocks
	Jun 30, 1999	May 31, 2000	Jun 30, 2000	Jun 1999	May 2000	Jun 30, 2000
	<i>1,000 Pounds</i>	<i>1,000 Pounds</i>	<i>1,000 Pounds</i>	<i>Percent</i>	<i>Percent</i>	<i>1,000 Lbs</i>
Fresh Fruit						
Apples						
Regular Storage	19,303	63,623	27,680	143	44	
Controlled Atmosphere	713,099	1,228,883	804,254	113	65	
Total	732,402	1,292,506	831,934	114	64	17,478
Pears						
Bartlett	3,720					
Other Varieties	6,576	69,789	27,006	411	39	
Total	10,296	69,789	27,006	262	39	3
Nuts						
Shelled						
Peanuts	617,770	600,145	594,612	96	99	
Pecans	33,847	36,650	37,086	110	101	
Other Shelled	138,199	156,897	132,666	96	85	
Total	789,816	793,692	764,364	97	96	407,578
In-Shell						
Peanuts	30,357	29,821	27,641	91	93	
Pecans	36,735	211,479	185,318	504	88	
Other In-Shell	3,920	8,183	6,310	161	77	
Total	71,012	249,483	219,269	309	88	84,479
Dairy Products						
Butter, Total	120,606	138,107	144,824	120	105	137,392
(Government Owned)	257	489	420	163	86	
Natural Cheese						
American, Total	531,268	554,619	574,567	108	104	
(Government Owned)	33	52	46	139	88	
Swiss	11,725	10,668	10,184	87	95	
Other Natural Cheese	185,427	198,095	197,517	107	100	
Total	728,420	763,382	782,268	107	102	515,688
Eggs, Frozen						
Whites	620	511	458	74	90	
Yolks	842	706	684	81	97	
Whole & Mixed	8,175	6,222	6,845	84	110	
Unclassified	1,635	667	784	48	118	
Total	11,272	8,106	8,771	78	108	8,499
Frozen Poultry						
Chicken						
Broilers (Whole)	32,428	41,071	45,913	142	112	
Hens	10,824	7,553	8,149	75	108	
Other Chicken	798,782	775,475	765,856	96	99	
Total	842,034	824,099	819,918	97	99	
Turkey						
Whole Turkeys	328,810	251,555	273,603	83	109	
Other Turkey	227,326	225,436	229,428	101	102	
Total	556,136	476,991	503,031	90	105	
Ducks	5,536	4,693	5,546	100	118	
Total	1,403,706	1,305,783	1,328,495	95	102	1,228,105

**Stocks in Cold Storage: By Commodity,
United States, June 2000 (Continued)**

Commodity	Stocks in All Warehouses			Percent of		Public Warehouse Stocks
	Jun 30, 1999	May 31, 2000	Jun 30, 2000	Jun 1999	May 2000	Jun 30, 2000
	<i>1,000 Pounds</i>	<i>1,000 Pounds</i>	<i>1,000 Pounds</i>	<i>Percent</i>	<i>Percent</i>	<i>1,000 Lbs</i>
Frozen Fruit						
Apples	79,824	83,407	79,744	100	96	
Apricots	4,904	3,806	11,581	236	304	
Blackberries, Total	8,444	12,135	9,955	118	82	
IQF	5,028	7,830	6,410	127	82	
Pails and Tubs	1,940	1,214	1,054	54	87	
Barrels, 400 lbs net	370	1,568	1,328	359	85	
Concentrate	1,106	1,523	1,163	105	76	
Blueberries	25,358	24,137	23,635	93	98	
Boysenberries	3,842	3,202	4,408	115	138	
Cherries, Tart (RSP)	58,361	66,628	61,387	105	92	
Cherries, Tart (Juice)	1,889	1,113	922	49	83	
Cherries, Sweet	10,834	9,958	10,109	93	102	
Grapes	1,798	3,478	3,104	173	89	
Peaches	21,880	29,815	23,522	108	79	
Raspberries, Black	109	556	880	807	158	
Raspberries, Red, Total	11,424	30,047	28,401	249	95	
IQF	5,504	10,310	10,682	194	104	
Pails and Tubs	2,867	9,414	8,564	299	91	
Barrels, 400 lbs net	2,047	8,762	7,900	386	90	
Concentrate	1,006	1,561	1,255	125	80	
Strawberries, Total	365,575	341,777	515,765	141	151	
Other Frozen Fruit	283,045	401,117	346,238	122	86	
Total	877,287	1,011,176	1,119,651	128	111	802,936
Frozen Juice						
Orange Juice Conc. ¹	1,969,733	1,965,578	2,040,535	104	104	
(Gallon Equivalent)	199,043	198,623	206,198			
Other Juice Concentrate	371,328	334,328	328,223	88	98	
Total	2,341,061	2,299,906	2,368,758	101	103	234,921
Frozen Vegetables						
Asparagus	15,712	12,559	15,577	99	124	
Limas, Fordhook	4,924	5,398	4,550	92	84	
Limas, Baby	33,466	31,832	24,290	73	76	
Green Beans, Reg. Cut	61,831	63,750	47,581	77	75	
Green Beans, Fr. Style	20,694	16,909	16,755	81	99	
Broccoli, Spears	49,485	37,269	36,534	74	98	
Broccoli, Chopped & Cut	139,675	105,659	98,189	70	93	
Brussels Sprouts	15,145	16,380	15,460	102	94	
Carrots, Diced	46,993	55,342	46,664	99	84	
Carrots, Other	115,576	146,795	133,842	116	91	
Cauliflower	32,894	42,431	37,576	114	89	
Corn, Cut	147,339	157,400	119,976	81	76	
Corn, Cob	108,050	134,166	108,557	100	81	
Mixed Vegetables	46,699	50,201	49,765	107	99	
Okra	51,951	42,278	54,120	104	128	
Onion Rings	13,397	13,357	12,287	92	92	
Onions, Other	35,605	55,340	54,355	153	98	
Blackeye Peas	5,598	2,639	3,553	63	135	
Green Peas	226,888	121,547	239,866	106	197	
Peas & Carrots Mixed	10,062	8,118	7,412	74	91	
Spinach	142,617	106,026	102,978	72	97	
Squash, Summer/Zucchini	49,942	38,744	41,099	82	106	
Southern Greens	39,455	32,483	37,321	95	115	
Other Vegetables	243,759	243,638	285,700	117	117	
Total	1,657,757	1,540,261	1,594,007	96	103	1,081,574

See footnotes at end of table.

--continued

**Stocks in Cold Storage: By Commodity,
United States, June 2000 (Continued)**

Commodity	Stocks in All Warehouses			Percent of		Public Warehouse Stocks
	Jun 30, 1999	May 31, 2000	Jun 30, 2000	Jun 1999	May 2000	Jun 30, 2000
	<i>1,000 Pounds</i>	<i>1,000 Pounds</i>	<i>1,000 Pounds</i>	<i>Percent</i>	<i>Percent</i>	<i>1,000 Lbs</i>
Potatoes						
French Fries	965,960	986,652	930,743	96	94	
Other Frozen	268,166	263,711	258,988	97	98	
Total	1,234,126	1,250,363	1,189,731	96	95	886,569
Meat						
Frozen Beef						
Boneless ²	252,166	320,812	321,330	127	100	
Beef Cuts ³	40,957	52,711	56,546	138	107	
Total	293,123	373,523	377,876	129	101	374,248
(Government Owned)	3,489	2,423	2,054	59	85	
Frozen Pork						
Picnics, Bone-in	8,398	7,936	9,124	109	115	
Hams, Total	127,846	99,313	106,384	83	107	99,020
Bone-in	80,683	55,915	63,655	79	114	61,764
Boneless ⁴	47,163	43,398	42,729	91	98	37,256
Bellies	93,383	68,245	60,324	65	88	
Loins, Total	28,174	23,782	20,991	75	88	17,740
Bone-in	15,887	14,410	11,030	69	77	
Boneless ⁵	12,287	9,372	9,961	81	106	
Ribs ⁶	43,107	60,165	41,234	96	69	
Butts	11,580	11,763	6,938	60	59	
Trimmings ⁷	51,734	48,872	43,053	83	88	
Other ⁸	102,040	97,077	93,692	92	97	
Variety Meats ⁹	46,507	73,326	70,847	152	97	
Unclassified ¹⁰	15,785	34,299	28,637	181	83	
Total	528,554	524,778	481,224	91	92	420,947
(Government Owned)	6,400	3,950	3,708	58	94	
Other						
Veal	3,957	4,222	4,392	111	104	
Lamb & Mutton	12,459	13,105	13,952	112	106	
Total	16,416	17,327	18,344	112	106	17,897
Canned						
Canned Hams	4,748	6,383	6,475	136	101	
Other Canned Meat	1,065	758	1,300	122	172	
Total	5,813	7,141	7,775	134	109	4,636
Total	843,906	922,769	885,219	105	96	817,728
Miscellaneous						
Cooler	676,519	632,476	633,219	94	100	455,874
Freezer	2,054,120	2,076,198	2,152,520	105	104	2,077,522
Total	2,730,639	2,708,674	2,785,739	102	103	2,533,396
Commodities						
Stored in Coolers	3,014,278	3,808,469	3,265,835	108	86	1,485,736
Stored in Freezers	10,538,028	10,545,528	10,784,201	102	102	7,270,610
Total	13,552,306	14,353,997	14,050,036	104	98	8,756,346

¹ Adjusted to 42.0 degrees Brix equivalent (9.896 pounds per gallon).

² Includes all boxed boneless beef, such as ground beef, roasts, steaks, loins, strips, rounds, trimmings, etc. Variety meats (edible offal), such as tongues, livers, hearts, kidneys, and other organs removed from slaughtered beef, are included as miscellaneous freezer stocks.

³ Includes all boxed primal beef cuts, bone-in.

⁴ Includes full ham, bone removed and individual muscles separated.

⁵ Includes pork tenderloins.

⁶ Includes spareribs and backribs.

⁷ Includes 42% regular trimmings, 72% special trimmings, boneless picnic meat, jowls, neckbone trimmings, blade, cheek, head, and shank meat, etc. Packaged bacon, sausage, and processed items, such as hot dogs and luncheon meats, are included in miscellaneous cooler or freezer stocks.

⁸ Includes ears, tails, feet, neckbones and snouts.

⁹ Includes tongues, kidneys, livers, stomachs, hearts, chitterlings, salivary glands, and other organs removed from slaughtered hogs.

¹⁰ Includes pork unable to be classified elsewhere in this report.

**Stocks in Cold Storage: By Commodity, Region,
and United States, May 31, 2000**

Commodity	New England	Middle Atlantic	East North Central	West North Central	South Atlantic
	<i>1,000 Pounds</i>	<i>1,000 Pounds</i>	<i>1,000 Pounds</i>	<i>1,000 Pounds</i>	<i>1,000 Pounds</i>
Total Fresh Apples	8,710	145,610	78,919		57,138
Nuts					
Shelled					
Peanuts		4	256	38	390,060
Pecans ¹		93			13,071
In-Shell					
Pecans ¹					38,154
Dairy Products					
Natural Cheese					
American, Total	21,338	45,929	280,676	118,759	6,162
Other Natural Cheese	798	9,224	103,179	72,959	427
Frozen Poultry					
Broilers (Whole)	121	363	796	1,170	11,345
Hens	271	58	772	1,353	1,665
Other Chicken	1,270	24,011	18,321	29,259	208,937
Total	1,662	24,432	19,889	31,782	221,947
Whole Turkeys	5,749	17,764	22,268	34,433	56,742
Other Turkey	275	15,596	16,628	68,066	57,154
Total	6,024	33,360	38,896	102,499	113,896
Ducks		124	4,329	4	13
Total	7,686	57,916	63,114	134,285	335,856
Frozen Fruit					
Apples	29	21,445	41,748	147	267
Blueberries	6,656	2,431	9,682	105	221
Cherries, Tart (RSP)	20	2,698	57,753	81	91
Cherries, Sweet		528	6,393	69	7
Peaches	16	1,595	2,448	36	1,407
Raspberries, Red	221	1,418	704	81	292
Strawberries, Total	72	3,864	4,805	2,223	913
Other Frozen Fruit	34,147	37,468	268,152	730	1,765

See footnotes at end of table.

--continued

**Stocks in Cold Storage: By Commodity, Region,
and United States, May 31, 2000 (continued)**

Commodity	East South Central	West South Central	Mountain	Pacific	US Total
	<i>1,000 Pounds</i>	<i>1,000 Pounds</i>	<i>1,000 Pounds</i>	<i>1,000 Pounds</i>	<i>1,000 Pounds</i>
Total Fresh Apples		2,028	1,439	998,662	1,292,506
Nuts					
Shelled					
Peanuts	58,517	149,581	151	1,538	600,145
Pecans ¹	1,297	21,991		198	36,650
In-Shell					
Pecans ¹	2,801	170,524			211,479
Dairy Products					
Natural Cheese					
American, Total		458	11,221	70,076	554,619
Other Natural Cheese	194	518	306	10,490	198,095
Frozen Poultry					
Broilers (Whole)	2,228	22,164	643	2,241	41,071
Hens	1,031	416	246	1,741	7,553
Other Chicken	158,958	283,035	2,267	49,417	775,475
Total	162,217	305,615	3,156	53,399	824,099
Whole Turkeys	5,305	60,801	8,486	40,007	251,555
Other Turkey	2,654	33,265	10,364	21,434	225,436
Total	7,959	94,066	18,850	61,441	476,991
Ducks	2	1	1	219	4,693
Total	170,178	399,682	22,007	115,059	1,305,783
Frozen Fruit					
Apples	119	1,148	202	18,302	83,407
Blueberries	74	200	79	4,689	24,137
Cherries, Tart (RSP)	39	146	1,189	4,611	66,628
Cherries, Sweet	3	35	557	2,366	9,958
Peaches	50	275	110	23,878	29,815
Raspberries, Red	114	826	1	26,390	30,047
Strawberries, Total	3,791	40,081	431	285,597	341,777
Other Frozen Fruit	302	7,194	1,031	50,328	401,117

See footnotes at end of table.

--continued

**Stocks in Cold Storage: By Commodity, Region,
and United States, May 31, 2000 (continued)**

Commodity	New England	Middle Atlantic	East North Central	West North Central	South Atlantic
	<i>1,000 Pounds</i>	<i>1,000 Pounds</i>	<i>1,000 Pounds</i>	<i>1,000 Pounds</i>	<i>1,000 Pounds</i>
Frozen Juice					
Orange Juice Conc. ²	134		928	91	1,882,038
Other Juice Concentrate	59	11,575	11,241	2,106	167,274
Frozen Vegetables ³					
Asparagus		271	5,425	63	311
Limas, Fordhook		757	445	108	1,981
Limas, Baby		3,736	3,956	410	5,832
Green Beans, Reg. Cut		9,687	16,422	936	2,524
Green Beans, Fr. Style		4,120	3,164	81	672
Broccoli, Spears		4,766	3,626	252	2,441
Broccoli, Chopped & Cut		8,952	10,650	4,050	6,371
Brussels Sprouts		1,784	1,107	477	554
Carrots, Diced		4,643	13,603	969	1,948
Carrots, Other		12,248	11,265	1,041	4,786
Cauliflower		2,168	3,256	1,642	1,261
Corn, Cut		15,371	24,077	8,058	6,726
Corn, Cob		9,468	18,509	8,669	4,044
Mixed Vegetables		5,000	7,509	1,657	2,932
Okra		1,739	921	1,121	8,841
Onion Rings		944	7,831	2,188	698
Onions, Other		5,196	4,580	483	3,290
Blackeye Peas		144	108	9	949
Green Peas		16,000	11,288	6,543	7,642
Peas & Carrots Mixed		947	668	44	625
Spinach		16,357	3,816	1,533	7,858
Squash, Summer/Zucchini		3,466	8,776	503	6,277
Southern Greens		874	353	26	16,995
Other Vegetables		25,912	20,741	13,212	30,144
Potatoes					
French Fries	29,215	41,222	72,624	112,076	21,167
Other Frozen	7,086	9,160	34,275	6,277	4,440
Meat					
Frozen Beef					
Boneless	2,487	41,926	32,347	83,348	35,564
Beef Cuts	764	3,121	6,368	11,371	3,335
Frozen Pork					
Ribs	435	1,249	14,839	26,738	7,549
Trimming	473	1,988	14,024	25,483	5,320
Other	3,185	2,792	18,842	34,367	13,663
Other					
Veal	97	366	1,332	539	81
Lamb & Mutton	402	4,364	1,601	711	1,026

See footnotes at end of table.

--continued

**Stocks in Cold Storage: By Commodity, Region,
and United States, May 31, 2000 (continued)**

Commodity	East South Central	West South Central	Mountain	Pacific	US Total
	<i>1,000 Pounds</i>	<i>1,000 Pounds</i>	<i>1,000 Pounds</i>	<i>1,000 Pounds</i>	<i>1,000 Pounds</i>
Frozen Juice					
Orange Juice Concentrate	445	5,854	2,250	73,838	1,965,578
Other Juice Concentrate	1,680	18,478	756	121,159	334,328
Frozen Vegetables ³					
Asparagus		628	520	5,341	12,559
Limas, Fordhook		198	169	1,740	5,398
Limas, Baby		696	4,331	12,871	31,832
Green Beans, Reg. Cut		1,221	346	32,614	63,750
Green Beans, Fr. Style		171	107	8,594	16,909
Broccoli, Spears		13,554	45	12,585	37,269
Broccoli, Chopped & Cut		27,827	1,736	46,073	105,659
Brussels Sprouts		785	96	11,577	16,380
Carrots, Diced		2,692	589	30,898	55,342
Carrots, Other		15,299	473	101,683	146,795
Cauliflower		12,812	114	21,178	42,431
Corn, Cut		2,354	3,384	97,430	157,400
Corn, Cob		2,523	59	90,894	134,166
Mixed Vegetables		7,503	24	25,576	50,201
Okra		28,943		713	42,278
Onion Rings		696	798	202	13,357
Onions, Other		4,621	8,354	28,816	55,340
Blackeye Peas		1,243		186	2,639
Green Peas		3,190	6,797	70,087	121,547
Peas & Carrots Mixed		688	1	5,145	8,118
Spinach		15,171	11,035	50,256	106,026
Squash, Summer/Zucchini		5,446	1,119	13,157	38,744
Southern Greens		13,731	6	498	32,483
Other Vegetables		37,584	2,936	113,109	243,638
Potatoes					
French Fries	2,859	6,469	282,729	418,291	986,652
Other Frozen	1,497	7,630	56,126	137,220	263,711
Meat					
Frozen Beef					
Boneless ⁴	4,437	53,085	5,013	62,605	320,812
Beef Cuts ⁵	522	7,663	7,585	11,982	52,711
Frozen Pork					
Ribs ⁶	3,273	2,216	22	3,844	60,165
Trimmings ⁷	247	1,119	57	161	48,872
Other ⁸	8,294	9,243	168	6,523	97,077
Other					
Veal		13		1,794	4,222
Lamb & Mutton		1,276	910	2,815	13,105

¹ East North Central combined with South Atlantic. Mountain and West North Central combined with West South Central.

² Middle Atlantic combined with South Atlantic.

³ New England combined with Middle Atlantic. East South Central combined with South Atlantic.

⁴ Includes all boxed boneless beef, such as ground beef, roasts, steaks, loins, strips, rounds, trimmings, etc. Variety meats (edible offal), such as tongues, livers, hearts, kidneys, and other organs removed from slaughtered beef, are included as miscellaneous freezer stocks.

⁵ Includes all boxed primal beef cuts, bone-in.

⁶ Includes spareribs and backribs.

⁷ Includes 42% regular trimmings, 72% special trimmings, boneless picnic meat, jowls, neckbone trimmings, blade, cheek, head, and shank meat, etc. Packaged bacon, sausage, and processed items, such as hot dogs and luncheon meats, are included in miscellaneous cooler or freezer stocks.

⁸ Includes ears, tails, feet, neckbones and snouts.

**Stocks in Cold Storage: By Commodity, Region,
and United States, June 30, 2000**

Commodity	New England	Middle Atlantic	East North Central	West North Central	South Atlantic
	<i>1,000 Pounds</i>	<i>1,000 Pounds</i>	<i>1,000 Pounds</i>	<i>1,000 Pounds</i>	<i>1,000 Pounds</i>
Total Fresh Apples	1,638	86,646	42,763		50,593
Nuts					
Shelled					
Peanuts		9	309	38	389,126
Pecans ¹		91			13,781
In-Shell					
Pecans ¹					32,862
Dairy Products					
Natural Cheese					
American, Total	22,529	48,870	296,024	119,911	4,505
Other Natural Cheese	777	9,563	103,227	70,809	444
Frozen Poultry					
Broilers (Whole)	123	2,210	780	1,169	12,508
Hens	373	61	625	1,316	2,937
Other Chicken	1,199	26,301	18,933	29,853	211,849
Total	1,695	28,572	20,338	32,338	227,294
Whole Turkeys	8,523	24,115	22,896	38,927	56,445
Other Turkey	394	15,827	15,680	71,047	57,123
Total	8,917	39,942	38,576	109,974	113,568
Ducks		113	5,266	4	13
Total	10,612	68,627	64,180	142,316	340,875
Frozen Fruit					
Apples	30	20,725	38,079	104	273
Blueberries	6,468	2,573	7,758	92	1,760
Cherries, Tart (RSP)	18	2,195	53,553	72	58
Cherries, Sweet		635	5,693	58	7
Peaches	10	1,219	1,755	77	1,336
Raspberries, Red	219	1,179	602	80	47
Strawberries, Total	95	4,199	6,174	2,111	655
Other Frozen Fruit	17,711	31,396	238,514	713	1,498

See footnotes at end of table.

--continued

**Stocks in Cold Storage: By Commodity, Region,
and United States, June 30, 2000 (continued)**

Commodity	East South Central	West South Central	Mountain	Pacific	US Total
	<i>1,000 Pounds</i>	<i>1,000 Pounds</i>	<i>1,000 Pounds</i>	<i>1,000 Pounds</i>	<i>1,000 Pounds</i>
Total Fresh Apples		470	152	649,672	831,934
Nuts					
Shelled					
Peanuts	57,792	145,883	143	1,312	594,612
Pecans ¹	1,311	21,638		265	37,086
In-Shell					
Pecans ¹	2,766	149,656		34	185,318
Dairy Products					
Natural Cheese					
American, Total		489	12,726	69,513	574,567
Other Natural Cheese	201	482	1,191	10,823	197,517
Frozen Poultry					
Broilers (Whole)	4,625	22,158	628	1,712	45,913
Hens	1,255	621	258	703	8,149
Other Chicken	150,554	279,162	2,212	45,793	765,856
Total	156,434	301,941	3,098	48,208	819,918
Whole Turkeys	6,405	55,981	10,954	49,357	273,603
Other Turkey	2,685	34,574	9,132	22,966	229,428
Total	9,090	90,555	20,086	72,323	503,031
Ducks	2	1	1	146	5,546
Total	165,526	392,497	23,185	120,677	1,328,495
Frozen Fruit					
Apples	124	1,069	194	19,146	79,744
Blueberries	71	537	63	4,313	23,635
Cherries, Tart (RSP)	34	153	1,071	4,233	61,387
Cherries, Sweet	3	32	425	3,256	10,109
Peaches	37	312	109	18,667	23,522
Raspberries, Red	94	623	17	25,540	28,401
Strawberries, Total	5,437	51,038	806	445,250	515,765
Other Frozen Fruit	341	6,904	886	48,275	346,238

See footnotes at end of table.

--continued

**Stocks in Cold Storage: By Commodity, Region,
and United States, June 30, 2000 (continued)**

Commodity	New England	Middle Atlantic	East North Central	West North Central	South Atlantic
	<i>1,000 Pounds</i>	<i>1,000 Pounds</i>	<i>1,000 Pounds</i>	<i>1,000 Pounds</i>	<i>1,000 Pounds</i>
Frozen Juice					
Orange Juice Conc. ²	66		971	171	1,959,141
Other Juice Concentrate	86	10,065	10,106	1,589	160,281
Frozen Vegetables ³					
Asparagus		389	9,007	12	383
Limas, Fordhook		687	425	76	1,789
Limas, Baby		2,838	3,554	355	4,155
Green Beans, Reg. Cut		6,562	12,065	922	2,497
Green Beans, Fr. Style		3,613	4,386	89	589
Broccoli, Spears		5,671	3,214	272	2,052
Broccoli, Chopped & Cut		7,358	8,482	4,365	5,706
Brussels Sprouts		1,754	1,214	427	532
Carrots, Diced		3,628	10,853	625	1,522
Carrots, Other		11,822	11,329	1,022	4,001
Cauliflower		2,112	3,262	1,497	1,090
Corn, Cut		13,198	19,671	5,667	6,664
Corn, Cob		7,417	16,822	4,077	5,347
Mixed Vegetables		4,500	7,281	1,779	2,952
Okra		2,211	868	2,724	11,373
Onion Rings		751	7,029	1,749	1,096
Onions, Other		5,573	4,696	475	3,327
Blackeye Peas		191	202	47	1,360
Green Peas		25,596	15,582	10,341	14,022
Peas & Carrots Mixed		894	746	47	569
Spinach		19,620	4,160	1,535	7,186
Squash, Summer/Zucchini		3,387	8,601	446	8,138
Southern Greens		1,523	330	1,174	17,858
Other Vegetables		35,671	22,385	12,056	30,084
Potatoes					
French Fries	26,475	35,850	70,522	112,063	22,122
Other Frozen	6,153	8,423	39,388	6,437	3,749
Meat					
Frozen Beef					
Boneless ⁴	2,675	36,991	32,362	81,985	33,792
Beef Cuts ⁵	1,376	3,552	6,095	11,636	2,765
Frozen Pork					
Ribs ⁶	285	755	11,207	17,051	6,089
Trimmings ⁷	280	1,727	10,651	23,259	4,993
Other ⁸	2,717	2,293	17,058	32,811	14,164
Other					
Veal	97	455	2,006	451	73
Lamb & Mutton	380	3,944	1,599	1,173	648

See footnotes at end of table.

--continued

**Stocks in Cold Storage: By Commodity, Region,
and United States, June 30, 2000 (continued)**

Commodity	East South Central	West South Central	Mountain	Pacific	US Total
	<i>1,000 Pounds</i>	<i>1,000 Pounds</i>	<i>1,000 Pounds</i>	<i>1,000 Pounds</i>	<i>1,000 Pounds</i>
Frozen Juice					
Orange Juice Concentrate	203	5,265	2,077	72,641	2,040,535
Other Juice Concentrate	1,387	17,850	762	126,097	328,223
Frozen Vegetables ³					
Asparagus		759	140	4,887	15,577
Limas, Fordhook		174	108	1,291	4,550
Limas, Baby		740	2,415	10,233	24,290
Green Beans, Reg. Cut		1,259	306	23,970	47,581
Green Beans, Fr. Style		236	54	7,788	16,755
Broccoli, Spears		13,986	74	11,265	36,534
Broccoli, Chopped & Cut		29,321	1,765	41,192	98,189
Brussels Sprouts		789	96	10,648	15,460
Carrots, Diced		2,498	583	26,955	46,664
Carrots, Other		13,662	437	91,569	133,842
Cauliflower		11,886	95	17,634	37,576
Corn, Cut		1,942	2,589	70,245	119,976
Corn, Cob		2,232	15	72,647	108,557
Mixed Vegetables		8,414	43	24,796	49,765
Okra		36,121		823	54,120
Onion Rings		844	567	251	12,287
Onions, Other		4,181	8,579	27,524	54,355
Blackeye Peas		1,578		175	3,553
Green Peas		3,456	16,023	154,846	239,866
Peas & Carrots Mixed		556		4,600	7,412
Spinach		13,818	10,307	46,352	102,978
Squash, Summer/Zucchini		5,199	964	14,364	41,099
Southern Greens		15,927		509	37,321
Other Vegetables		38,413	3,946	143,145	285,700
Potatoes					
French Fries	1,063	8,630	263,266	390,752	930,743
Other Frozen	1,456	7,402	52,568	133,412	258,988
Meat					
Frozen Beef					
Boneless ⁴	6,085	56,130	5,773	65,537	321,330
Beef Cuts ⁵	599	9,222	8,662	12,639	56,546
Frozen Pork					
Ribs ⁶	2,047	1,669	22	2,109	41,234
Trimmings ⁷	259	1,560	49	275	43,053
Other ⁸	8,296	9,466	148	6,739	93,692
Other					
Veal		7		1,303	4,392
Lamb & Mutton		1,301	904	4,003	13,952

¹ East North Central combined with South Atlantic. Mountain and West North Central Combined with West South Central.

² Middle Atlantic combined with South Atlantic.

³ New England combined with Middle Atlantic. East South Central combined with South Atlantic.

⁴ Includes all boxed boneless beef, such as ground beef, roasts, steaks, loins, strips, rounds, trimmings, etc. Variety meats (edible offal), such as tongues, livers, hearts, kidneys, and other organs removed from slaughtered beef, are included as miscellaneous freezer stocks.

⁵ Includes all boxed primal beef cuts, bone-in.

⁶ Includes spareribs and backribs.

⁷ Includes 42% regular trimmings, 72% special trimmings, boneless picnic meat, jowls, neckbone trimmings, blade, cheek, head, and shank meat, etc. Packaged bacon, sausage, and processed items, such as hot dogs and luncheon meats, are included in miscellaneous cooler or freezer stocks.

⁸ Includes ears, tails, feet, neckbones and snouts.

**Public General Warehouses: Cold Storage Space Occupied
by Region and United States, June 2000**

Region	Cooler				Freezer			
	Usable Space	Usable Space Occupied			Usable Space	Usable Space Occupied		
		Jun 30 2000	Jun 30 1999	May 31 2000		Jun 30 2000	Jun 30 1999	May 31 2000
	<i>1,000 Cu Ft</i>	<i>Percent</i>	<i>Percent</i>	<i>Percent</i>	<i>1,000 Cu Ft</i>	<i>Percent</i>	<i>Percent</i>	<i>Percent</i>
New England	2,366	63	68	63	20,262	70	78	73
Middle Atlantic	35,623	72	57	57	97,149	76	79	77
E. North Central	58,204	54	44	48	199,924	55	48	44
W. North Central	44,263	52	39	42	148,700	55	63	60
South Atlantic	47,754	53	47	42	185,295	57	57	58
E. South Central	8,928	60	52	55	64,319	49	42	42
W. South Central	20,766	47	44	47	133,636	70	68	66
Mountain	6,060	77	35	40	56,238	71	57	59
Pacific	41,352	44	31	32	276,846	64	62	62
US	265,316	55	44	45	1,182,369	62	60	59

Cold Storage Regions



Survey Procedures: Questionnaires are mailed about the 24th of each month to all operators on the list of approximately 1,400 public and private cold storage warehouses. In addition, apple data are obtained from special surveys and other sources (State Departments of Agriculture, U.S. Apple Association, etc.). All survey data represent stocks as of the end of the month.

Data are collected from warehouses artificially cooled to a temperature of 50 degrees Fahrenheit or lower, and whose food products are normally stored for 30 days or more. All food items in these facilities are reported regardless of the number of days stored at the time of the report. Also included are specialized storage facilities meeting the 30 day requirement, such as fruit houses, dairy manufacturing plants, frozen fruit, fruit juice, and vegetable processors, and poultry and meat packing plants. Excluded are stocks in space maintained by wholesalers, jobbers, distributors, chain stores, locker plants containing individual lockers, meat packer branch houses, and frozen food processors whose entire inventories are turned over more than once a month.

Estimating Procedures: Data for reporting firms are added to estimates for non-reporting firms to obtain regional and National totals. Estimates for non-reporting firms are obtained by multiplying the previous month's figure by a percent change from the previous month. The percent change is calculated for each item from totals of the current and previous month summed from firms that reported both months.

Revision Policy: Data are revised the following month based on late reports or corrected data. Final figures are published in the annual summary in February of the following year.

Reliability: Reports are received from 900 firms each month which represent about 70 percent of the total capacity. Firms that are not on the list or firms who have never reported are not represented in the data. Monthly data can vary due to different firms reporting month to month. Survey data are also subject to non-sampling errors such as omissions and mistakes in reporting and in processing the data. While these errors cannot be measured directly, they are minimized by carefully reviewing all reported data for consistency and reasonableness.

The next "Cold Storage" report will be released at 3 p.m. ET on August 18, 2000.

The United States Department of Agriculture (USDA) prohibits discrimination in all its programs on the basis of race, color, national origin, gender, religion, age, disability, political beliefs, sexual orientation, and marital or family status. (Not all prohibited bases apply to all programs.) Persons with disabilities who require alternative means for communication of program information (braille, large print, audiotape, etc.) should contact the USDA's TARGET Center at 202-720-2600 (voice and TDD).

To file a complaint of discrimination, write USDA, Director, Office of Civil Rights, Room 326-W, Whitten Building, 14th and Independence Avenue, SW, Washington, D.C., 20250-9410, or call 202-720-5964 (voice or TDD). USDA is an equal opportunity provider and employer.

ACCESS TO REPORTS!!

For your convenience, there are several ways to obtain NASS reports, data products, and services:

INTERNET ACCESS

All NASS reports are available free of charge on the worldwide Internet. For access, connect to the Internet and go to the NASS Home Page at: <http://www.usda.gov/nass/>. Select "Today's Reports" or Publications and then Reports by Calendar or Publications and then Search, by Title or Subject.

E-MAIL SUBSCRIPTION

There are two options for subscribing via e-mail. All NASS reports are available by subscription free of charge direct to your e-mail address. 1) Starting with the NASS Home Page at <http://www.usda.gov/nass/>, click on **Publications**, then click on the **Subscribe by E-mail** button which takes you to the page describing e-mail delivery of reports. Finally, click on **Go to the Subscription Page** and follow the instructions. 2) If you do NOT have Internet access, send an e-mail message to: usda-reports@usda.mannlib.cornell.edu. In the body of the message type the word: **list**.

AUTOFAX ACCESS

NASSFax service is available for some reports from your fax machine. Please call 202-720-2000, using the handset attached to your fax. Respond to the voice prompts. Document 0411 is a list of available reports.

PRINTED REPORTS OR DATA PRODUCTS

CALL OUR TOLL-FREE ORDER DESK: 800-999-6779 (U.S. and Canada)
Other areas, please call 703-834-0125 FAX: 703-834-0110
(Visa, MasterCard, check, or money order acceptable for payment.)

ASSISTANCE

For **assistance** with general agricultural statistics or further information about NASS or its products or services, contact the **Agricultural Statistics Hotline** at **800-727-9540**, 7:30 a.m. to 4:00 p.m. ET, or e-mail: nass@nass.usda.gov.