



Cold Storage

Released August 18, 2000, by the National Agricultural Statistics Service (NASS), Agricultural Statistics Board, U.S. Department of Agriculture. For information on "Cold Storage" call Linda Simpson at (202) 720-8784, office hours 7:00 a.m. to 4:30 p.m. ET.

HIGHLIGHTS

Frozen food stocks in refrigerated warehouses on July 31, 2000, were greater than year earlier levels for fruit, red meat, potatoes and orange juice concentrate. Cooler stocks of pecans and apples were also higher than a year earlier.

Butter stocks were 6 percent below June 2000 but 10 percent above a year ago.

Total red meat supplies in freezers were 3 percent below June 2000 but 6 percent above July 1999. Frozen pork stocks were 3 percent below last month and 4 percent below last year. Stocks of pork bellies decreased 17 percent from last month and 27 percent from July 1999 stocks.

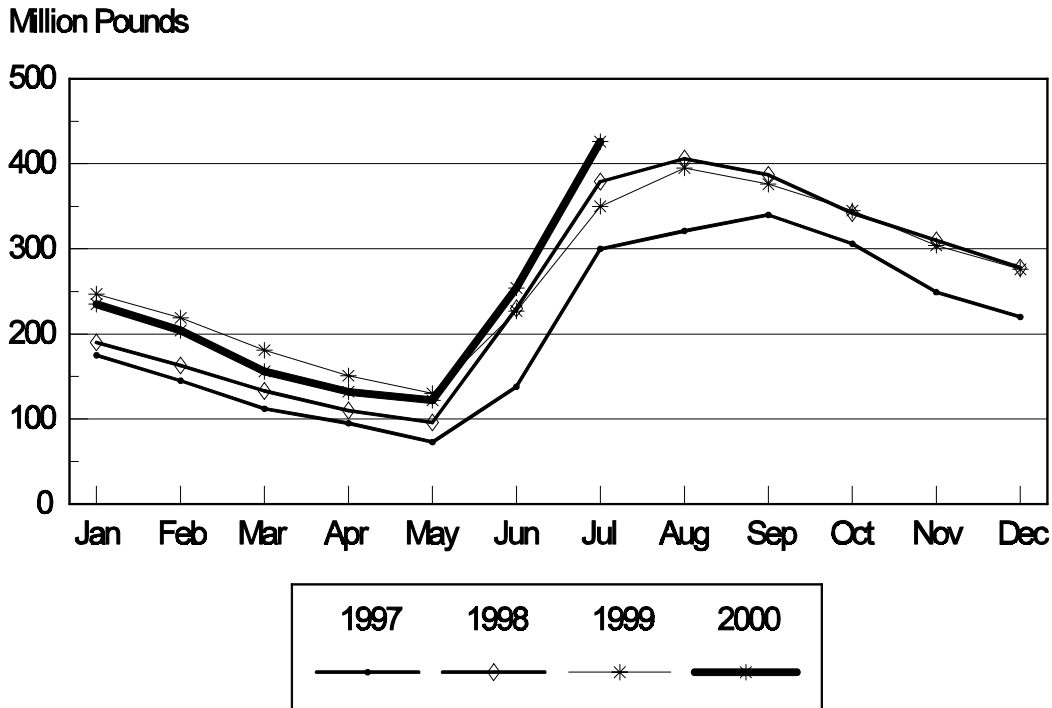
Total frozen poultry supplies were up 1 percent from last month but were 9 percent below last year's level. Total stocks of chicken were slightly below last month and were 6 percent below July 1999. Total pounds of turkey in freezers increased 3 percent from last month but were 13 percent below last year.

Public cooler occupancy was at 43 percent of capacity, down 9 points from last year. Public freezer occupancy at 60 percent was down 3 percentage points from last year.

Table of Contents

	Page
Stocks in Cold Storage: By Commodity, United States, July 2000	3
Stocks in Cold Storage: By Commodity, Region, and United States, June 30, 2000	6
Stocks in Cold Storage: By Commodity, Region, and United States, July 31, 2000	10
Public General Warehouses: Cold Storage Space Occupied by Region and United States, July 2000	14
Survey and Estimating Procedures, Revision Policy and Reliability	15

Frozen Green Peas Cold Storage Stocks, 1997-2000 United States



**Stocks in Cold Storage: By Commodity,
United States, July 2000**

Commodity	Stocks in All Warehouses			Percent of		Public Warehouse Stocks
	Jul 31, 1999	Jun 30, 2000	Jul 31, 2000	Jul 1999	Jun 2000	Jul 31, 2000
	<i>1,000 Pounds</i>	<i>1,000 Pounds</i>	<i>1,000 Pounds</i>	<i>Percent</i>	<i>Percent</i>	<i>1,000 Lbs</i>
Fresh Fruit						
Apples						
Regular Storage	11,564	27,680	25,972	225	94	
Controlled Atmosphere	349,281	804,254	386,420	111	48	
Total	360,845	831,934	412,392	114	50	6,479
Pears						
Bartlett	11,450	675	30,482	266		
Other Varieties	116	27,006	9,870		37	
Total	11,566	27,681	40,352	349	146	12,583
Nuts						
Shelled						
Peanuts	590,086	590,565	570,855	97	97	
Pecans	30,505	37,070	35,983	118	97	
Other Shelled	107,755	132,683	135,915	126	102	
Total	728,346	760,318	742,753	102	98	407,464
In-Shell						
Peanuts	26,149	28,421	24,943	95	88	
Pecans	23,860	185,318	166,217	697	90	
Other In-Shell	2,013	6,310	5,383	267	85	
Total	52,022	220,049	196,543	378	89	76,948
Dairy Products						
Butter, Total	123,552	144,861	136,357	110	94	126,316
(Government Owned)	334	420	391	117	93	
Natural Cheese						
American, Total	543,642	570,290	598,098	110	105	
(Government Owned)	48	46	60	125	130	
Swiss	10,590	8,646	8,465	80	98	
Other Natural Cheese	194,486	203,362	214,287	110	105	
Total	748,718	782,298	820,850	110	105	539,396
Eggs, Frozen						
Whites	707	423	561	79	133	
Yolks	861	684	700	81	102	
Whole & Mixed	7,964	6,845	10,769	135	157	
Unclassified	1,600	784	1,269	79	162	
Total	11,132	8,736	13,299	119	152	12,834
Frozen Poultry						
Chicken						
Broilers (Whole)	33,819	45,913	35,983	106	78	
Hens	10,362	8,149	7,994	77	98	
Other Chicken	828,087	767,570	777,440	94	101	
Total	872,268	821,632	821,417	94	100	
Turkey						
Whole Turkeys	384,022	273,718	285,010	74	104	
Other Turkey	214,991	229,902	235,087	109	102	
Total	599,013	503,620	520,097	87	103	
Ducks	5,335	5,546	5,054	95	91	
Total	1,476,616	1,330,798	1,346,568	91	101	1,251,961

**Stocks in Cold Storage: By Commodity,
United States, July 2000 (Continued)**

Commodity	Stocks in All Warehouses			Percent of		Public Warehouse Stocks
	Jul 31, 1999	Jun 30, 2000	Jul 31, 2000	Jul 1999	Jun 2000	Jul 31, 2000
	<i>1,000 Pounds</i>	<i>1,000 Pounds</i>	<i>1,000 Pounds</i>	<i>Percent</i>	<i>Percent</i>	<i>1,000 Lbs</i>
Frozen Fruit						
Apples	74,147	79,770	74,306	100	93	
Apricots	16,387	11,581	14,958	91	129	
Blackberries, Total	24,896	9,924	26,891	108	271	
IQF	15,228	6,378	15,238	100	239	
Pails and Tubs	2,759	1,055	2,501	91	237	
Barrels, 400 lbs net	6,017	1,328	7,610	126	573	
Concentrate	892	1,163	1,542	173	133	
Blueberries	47,525	23,584	52,066	110	221	
Boysenberries	7,748	4,407	6,703	87	152	
Cherries, Tart (RSP)	162,135	61,412	166,062	102	270	
Cherries, Tart (Juice)	3,826	922	2,812	73	305	
Cherries, Sweet	16,701	10,102	16,191	97	160	
Grapes	1,402	3,108	2,831	202	91	
Peaches	20,840	23,728	37,164	178	157	
Raspberries, Black	2,704	880	3,919	145	445	
Raspberries, Red, Total	55,291	28,426	77,112	139	271	
IQF	17,157	10,835	21,238	124	196	
Pails and Tubs	14,396	8,503	19,800	138	233	
Barrels, 400 lbs net	22,456	7,832	34,782	155	444	
Concentrate	1,282	1,256	1,292	101	103	
Strawberries, Total	379,518	515,211	503,919	133	98	
Other Frozen Fruit	288,369	346,614	316,792	110	91	
Total	1,101,489	1,119,669	1,301,726	118	116	991,228
Frozen Juice						
Orange Juice Conc. ¹	1,822,978	2,037,921	1,861,102	102	91	
(Gallon Equivalent)	184,214	205,934	188,066			
Other Juice Concentrate	351,086	327,577	321,689	92	98	
Total	2,174,064	2,365,498	2,182,791	100	92	227,686
Frozen Vegetables						
Asparagus	18,071	15,494	14,912	83	96	
Limas, Fordhook	6,048	4,670	4,111	68	88	
Limas, Baby	29,828	24,550	20,647	69	84	
Green Beans, Reg. Cut	111,933	48,483	86,666	77	179	
Green Beans, Fr. Style	27,910	16,481	24,059	86	146	
Broccoli, Spears	52,559	35,731	35,460	67	99	
Broccoli, Chopped & Cut	150,122	99,478	101,179	67	102	
Brussels Sprouts	13,306	14,913	13,937	105	93	
Carrots, Diced	44,520	46,718	39,738	89	85	
Carrots, Other	113,375	133,499	128,647	113	96	
Cauliflower	29,224	37,597	34,832	119	93	
Corn, Cut	140,420	121,653	134,768	96	111	
Corn, Cob	98,635	105,327	99,907	101	95	
Mixed Vegetables	48,651	47,855	51,114	105	107	
Okra	57,424	53,942	60,153	105	112	
Onion Rings	13,838	12,284	11,551	83	94	
Onions, Other	33,171	53,534	43,066	130	80	
Blackeye Peas	4,297	3,517	2,577	60	73	
Green Peas	350,191	254,497	426,030	122	167	
Peas & Carrots Mixed	9,827	7,512	7,717	79	103	
Spinach	131,132	99,820	92,410	70	93	
Squash, Summer/Zucchini	56,249	41,097	47,589	85	116	
Southern Greens	25,962	36,237	37,315	144	103	
Other Vegetables	257,931	280,841	301,219	117	107	
Total	1,824,624	1,595,730	1,819,604	100	114	1,257,725

See footnotes at end of table.

--continued

**Stocks in Cold Storage: By Commodity,
United States, July 2000 (Continued)**

Commodity	Stocks in All Warehouses			Percent of		Public Warehouse Stocks
	Jul 31, 1999	Jun 30, 2000	Jul 31, 2000	Jul 1999	Jun 2000	Jul 31, 2000
	<i>1,000 Pounds</i>	<i>1,000 Pounds</i>	<i>1,000 Pounds</i>	<i>Percent</i>	<i>Percent</i>	<i>1,000 Lbs</i>
Potatoes						
French Fries	900,347	929,810	927,044	103	100	
Other Frozen	241,931	256,500	251,161	104	98	
Total	1,142,278	1,186,310	1,178,205	103	99	877,189
Meat						
Frozen Beef						
Boneless ²	245,813	321,239	310,862	126	97	
Beef Cuts ³	46,909	59,030	55,266	118	94	
Total	292,722	380,269	366,128	125	96	362,123
(Government Owned)	3,476	2,058	1,950	56	95	
Frozen Pork						
Picnics, Bone-in	6,214	9,124	8,887	143	97	
Hams, Total	135,017	112,846	131,135	97	116	123,404
Bone-in	80,561	61,114	72,502	90	119	70,073
Boneless ⁴	54,456	51,732	58,633	108	113	53,331
Bellies	69,675	60,524	50,516	73	83	
Loins, Total	22,847	20,998	14,800	65	70	12,665
Bone-in	12,000	11,029	6,980	58	63	
Boneless ⁵	10,847	9,969	7,820	72	78	
Ribs ⁶	39,571	41,255	37,446	95	91	
Butts	9,207	6,943	6,057	66	87	
Trimmings ⁷	47,355	45,539	41,300	87	91	
Other ⁸	103,487	90,551	86,761	84	96	
Variety Meats ⁹	50,577	70,878	70,571	140	100	
Unclassified ¹⁰	10,666	28,637	26,411	248	92	
Total	494,616	487,295	473,884	96	97	418,530
(Government Owned)	6,144	3,721	3,454	56	93	
Other						
Veal	4,069	4,391	4,340	107	99	
Lamb & Mutton	11,975	13,952	10,508	88	75	
Total	16,044	18,343	14,848	93	81	14,470
Canned						
Canned Hams	6,235	6,475	7,220	116	112	
Other Canned Meat	760	1,300	900	118	69	
Total	6,995	7,775	8,120	116	104	4,786
Total	810,377	893,682	862,980	106	97	799,909
Miscellaneous						
Cooler	700,653	641,490	707,384	101	110	494,982
Freezer	2,021,149	2,172,282	2,126,585	105	98	2,053,630
Total	2,721,802	2,813,772	2,833,969	104	101	2,548,612
Commodities						
Stored in Coolers	2,609,145	3,271,545	2,928,394	112	90	1,542,638
Stored in Freezers	10,678,286	10,809,791	10,959,995	103	101	7,593,692
Total	13,287,431	14,081,336	13,888,389	105	99	9,136,330

¹ Adjusted to 42.0 degrees Brix equivalent (9.896 pounds per gallon).

² Includes all boxed boneless beef, such as ground beef, roasts, steaks, loins, strips, rounds, trimmings, etc. Variety meats (edible offal), such as tongues, livers, hearts, kidneys, and other organs removed from slaughtered beef, are included as miscellaneous freezer stocks.

³ Includes all boxed primal beef cuts, bone-in.

⁴ Includes full ham, bone removed and individual muscles separated.

⁵ Includes pork tenderloins.

⁶ Includes spareribs and backribs.

⁷ Includes 42% regular trimmings, 72% special trimmings, boneless picnic meat, jowls, neckbone trimmings, blade, cheek, head, and shank meat, etc. Packaged bacon, sausage, and processed items, such as hot dogs and luncheon meats, are included in miscellaneous cooler or freezer stocks.

⁸ Includes ears, tails, feet, neckbones and snouts.

⁹ Includes tongues, kidneys, livers, stomachs, hearts, chitterlings, salivary glands, and other organs removed from slaughtered hogs.

¹⁰ Includes pork unable to be classified elsewhere in this report.

**Stocks in Cold Storage: By Commodity, Region,
and United States, June 30, 2000**

Commodity	New England	Middle Atlantic	East North Central	West North Central	South Atlantic
	<i>1,000 Pounds</i>	<i>1,000 Pounds</i>	<i>1,000 Pounds</i>	<i>1,000 Pounds</i>	<i>1,000 Pounds</i>
Nuts					
Shelled					
Peanuts		9	309	38	385,964
Pecans ¹		91			13,765
In-Shell					
Pecans ¹					32,862
Dairy Products					
Natural Cheese					
American, Total	22,529	48,882	295,577	119,306	4,505
Other Natural Cheese	777	16,093	102,601	70,750	444
Frozen Poultry					
Broilers (Whole)	123	2,210	780	1,169	12,508
Hens	373	61	625	1,316	2,937
Other Chicken	1,199	26,299	18,776	29,853	211,849
Total	1,695	28,570	20,181	32,338	227,294
Whole Turkeys	8,523	24,115	21,663	38,927	56,445
Other Turkey	394	15,822	16,159	71,047	57,123
Total	8,917	39,937	37,822	109,974	113,568
Ducks		113	5,266	4	13
Total	10,612	68,620	63,269	142,316	340,875
Frozen Fruit					
Apples	30	20,725	38,105	104	273
Blueberries	6,468	2,573	7,681	92	1,786
Cherries, Tart (RSP)	18	2,195	53,578	72	58
Cherries, Sweet		635	5,686	58	7
Peaches	10	1,219	1,915	77	1,381
Raspberries, Red	219	1,125	609	80	89
Strawberries, Total	95	4,079	5,362	2,111	1,034
Other Frozen Fruit	17,711	31,395	238,512	713	1,877

See footnotes at end of table.

--continued

**Stocks in Cold Storage: By Commodity, Region,
and United States, June 30, 2000 (continued)**

Commodity	East South Central	West South Central	Mountain	Pacific	US Total
	<i>1,000 Pounds</i>	<i>1,000 Pounds</i>	<i>1,000 Pounds</i>	<i>1,000 Pounds</i>	<i>1,000 Pounds</i>
Nuts					
Shelled					
Peanuts	59,159	143,631	143	1,312	590,565
Pecans ¹	1,311	21,638		265	37,070
In-Shell					
Pecans ¹	2,766	149,656		34	185,318
Dairy Products					
Natural Cheese					
American, Total		489	11,371	67,631	570,290
Other Natural Cheese	201	482	1,191	10,823	203,362
Frozen Poultry					
Broilers (Whole)	4,625	22,158	628	1,712	45,913
Hens	1,255	621	258	703	8,149
Other Chicken	152,427	279,162	2,212	45,793	767,570
Total	158,307	301,941	3,098	48,208	821,632
Whole Turkeys	7,753	55,981	10,954	49,357	273,718
Other Turkey	2,685	34,574	9,132	22,966	229,902
Total	10,438	90,555	20,086	72,323	503,620
Ducks	2	1	1	146	5,546
Total	168,747	392,497	23,185	120,677	1,330,798
Frozen Fruit					
Apples	124	1,069	194	19,146	79,770
Blueberries	71	537	63	4,313	23,584
Cherries, Tart (RSP)	34	153	1,071	4,233	61,412
Cherries, Sweet	3	32	425	3,256	10,102
Peaches	37	312	109	18,668	23,728
Raspberries, Red	94	623	17	25,570	28,426
Strawberries, Total	5,437	51,038	806	445,249	515,211
Other Frozen Fruit	341	6,904	886	48,275	346,614

See footnotes at end of table.

--continued

**Stocks in Cold Storage: By Commodity, Region,
and United States, June 30, 2000 (continued)**

Commodity	New England	Middle Atlantic	East North Central	West North Central	South Atlantic
	<i>1,000 Pounds</i>	<i>1,000 Pounds</i>	<i>1,000 Pounds</i>	<i>1,000 Pounds</i>	<i>1,000 Pounds</i>
Frozen Juice					
Orange Juice Conc. ²	66		1,130	171	1,956,368
Other Juice Concentrate	86	10,059	9,514	1,589	160,233
Frozen Vegetables ³					
Asparagus		338	8,973	12	385
Limas, Fordhook		798	427	76	1,796
Limas, Baby		3,197	3,541	355	4,168
Green Beans, Reg. Cut		7,422	12,085	922	2,530
Green Beans, Fr. Style		3,333	4,389	89	592
Broccoli, Spears		4,857	3,217	272	2,060
Broccoli, Chopped & Cut		8,977	8,118	4,365	5,740
Brussels Sprouts		1,213	1,207	427	533
Carrots, Diced		3,552	10,800	625	1,534
Carrots, Other		11,503	11,324	1,022	4,020
Cauliflower		2,133	3,261	1,497	1,091
Corn, Cut		13,397	19,717	5,667	6,664
Corn, Cob		5,023	16,825	4,077	5,365
Mixed Vegetables		4,604	5,321	1,779	2,956
Okra		1,993	828	2,724	11,453
Onion Rings		751	7,026	1,749	1,096
Onions, Other		4,767	4,685	475	3,338
Blackeye Peas		155	202	47	1,360
Green Peas		23,817	15,462	10,341	13,912
Peas & Carrots Mixed		875	746	47	569
Spinach		16,437	4,158	1,535	7,213
Squash, Summer/Zucchini		3,417	8,569	446	8,138
Southern Greens		999	330	1,174	17,298
Other Vegetables		29,719	26,461	12,056	30,122
Potatoes					
French Fries	26,475	35,850	70,444	112,063	22,122
Other Frozen	6,153	8,382	36,938	6,437	3,762
Meat					
Frozen Beef					
Boneless	2,675	36,976	32,286	81,985	33,792
Beef Cuts	1,376	3,552	6,079	11,636	2,765
Frozen Pork					
Ribs	285	768	11,215	17,051	6,089
Trimnings	280	1,725	13,139	23,259	4,993
Other	2,717	2,293	13,961	32,811	14,164
Other					
Veal	97	455	2,005	451	73
Lamb & Mutton	380	3,944	1,599	1,173	648

See footnotes at end of table.

--continued

**Stocks in Cold Storage: By Commodity, Region,
and United States, June 30, 2000 (continued)**

Commodity	East South Central	West South Central	Mountain	Pacific	US Total
	<i>1,000 Pounds</i>	<i>1,000 Pounds</i>	<i>1,000 Pounds</i>	<i>1,000 Pounds</i>	<i>1,000 Pounds</i>
Frozen Juice					
Orange Juice Concentrate	203	5,265	2,077	72,641	2,037,921
Other Juice Concentrate	1,387	17,850	762	126,097	327,577
Frozen Vegetables ³					
Asparagus		759	140	4,887	15,494
Limas, Fordhook		174	108	1,291	4,670
Limas, Baby		740	2,415	10,134	24,550
Green Beans, Reg. Cut		1,259	306	23,959	48,483
Green Beans, Fr. Style		236	54	7,788	16,481
Broccoli, Spears		13,986	74	11,265	35,731
Broccoli, Chopped & Cut		29,321	1,765	41,192	99,478
Brussels Sprouts		789	96	10,648	14,913
Carrots, Diced		2,498	583	27,126	46,718
Carrots, Other		13,662	437	91,531	133,499
Cauliflower		11,886	95	17,634	37,597
Corn, Cut		1,942	2,589	71,677	121,653
Corn, Cob		2,232	15	71,790	105,327
Mixed Vegetables		8,414	43	24,738	47,855
Okra		36,121		823	53,942
Onion Rings		844	567	251	12,284
Onions, Other		4,181	8,579	27,509	53,534
Blackeye Peas		1,578		175	3,517
Green Peas		3,456	16,023	171,486	254,497
Peas & Carrots Mixed		556		4,719	7,512
Spinach		13,818	10,307	46,352	99,820
Squash, Summer/Zucchini		5,199	964	14,364	41,097
Southern Greens		15,927		509	36,237
Other Vegetables		38,413	3,946	140,124	280,841
Potatoes					
French Fries	1,063	8,630	263,266	389,897	929,810
Other Frozen	1,456	7,402	52,568	133,402	256,500
Meat					
Frozen Beef					
Boneless ⁴	6,085	56,130	5,773	65,537	321,239
Beef Cuts ⁵	3,111	9,222	8,662	12,627	59,030
Frozen Pork					
Ribs ⁶	2,047	1,669	22	2,109	41,255
Trimmings ⁷	259	1,560	49	275	45,539
Other ⁸	8,252	9,466	148	6,739	90,551
Other					
Veal		7		1,303	4,391
Lamb & Mutton		1,301	904	4,003	13,952

¹ East North Central combined with South Atlantic. Mountain and West North Central combined with West South Central.

² Middle Atlantic combined with South Atlantic.

³ New England combined with Middle Atlantic. East South Central combined with South Atlantic.

⁴ Includes all boxed boneless beef, such as ground beef, roasts, steaks, loins, strips, rounds, trimmings, etc. Variety meats (edible offal), such as tongues, livers, hearts, kidneys, and other organs removed from slaughtered beef, are included as miscellaneous freezer stocks.

⁵ Includes all boxed primal beef cuts, bone-in.

⁶ Includes spareribs and backribs.

⁷ Includes 42% regular trimmings, 72% special trimmings, boneless picnic meat, jowls, neckbone trimmings, blade, cheek, head, and shank meat, etc. Packaged bacon, sausage, and processed items, such as hot dogs and luncheon meats, are included in miscellaneous cooler or freezer stocks.

⁸ Includes ears, tails, feet, neckbones and snouts.

**Stocks in Cold Storage: By Commodity, Region,
and United States, July 31, 2000**

Commodity	New England	Middle Atlantic	East North Central	West North Central	South Atlantic
	<i>1,000 Pounds</i>	<i>1,000 Pounds</i>	<i>1,000 Pounds</i>	<i>1,000 Pounds</i>	<i>1,000 Pounds</i>
Nuts					
Shelled					
Peanuts		38	279	36	380,655
Pecans ¹		116			12,505
In-Shell					
Pecans ¹					27,469
Dairy Products					
Natural Cheese					
American, Total	22,993	53,871	307,827	127,737	5,375
Other Natural Cheese	899	17,767	104,724	77,173	606
Frozen Poultry					
Broilers (Whole)	98	2,146	607	989	8,996
Hens	393	106	646	1,342	2,680
Other Chicken	1,421	27,378	20,516	30,728	218,557
Total	1,912	29,630	21,769	33,059	230,233
Whole Turkeys	9,377	29,137	25,157	44,230	48,220
Other Turkey	377	18,136	15,927	71,908	60,963
Total	9,754	47,273	41,084	116,138	109,183
Ducks		112	4,582	75	34
Total	11,666	77,015	67,435	149,272	339,450
Frozen Fruit					
Apples	22	19,368	35,423	112	273
Blueberries	6,520	6,542	20,880	121	6,336
Cherries, Tart (RSP)	34	8,459	135,748	88	32
Cherries, Sweet		503	10,528	89	9
Peaches	13	2,453	1,973	39	281
Raspberries, Red	223	1,092	1,045	113	93
Strawberries, Total	112	3,904	5,452	2,264	1,091
Other Frozen Fruit	13,518	25,636	219,606	731	1,582

See footnotes at end of table.

--continued

**Stocks in Cold Storage: By Commodity, Region,
and United States, July 31, 2000 (continued)**

Commodity	East South Central	West South Central	Mountain	Pacific	US Total
	<i>1,000 Pounds</i>	<i>1,000 Pounds</i>	<i>1,000 Pounds</i>	<i>1,000 Pounds</i>	<i>1,000 Pounds</i>
Nuts					
Shelled					
Peanuts	59,196	129,429	163	1,059	570,855
Pecans ¹	1,242	21,521		599	35,983
In-Shell					
Pecans ¹	2,749	135,999			166,217
Dairy Products					
Natural Cheese					
American, Total		521	11,512	68,262	598,098
Other Natural Cheese	205	528	1,200	11,185	214,287
Frozen Poultry					
Broilers (Whole)	3,318	17,809	571	1,449	35,983
Hens	1,582	685	101	459	7,994
Other Chicken	153,902	277,259	2,321	45,358	777,440
Total	158,802	295,753	2,993	47,266	821,417
Whole Turkeys	7,356	56,968	12,465	52,100	285,010
Other Turkey	2,065	32,112	10,174	23,425	235,087
Total	9,421	89,080	22,639	75,525	520,097
Ducks	78	9	1	163	5,054
Total	168,301	384,842	25,633	122,954	1,346,568
Frozen Fruit					
Apples	106	2,435	84	16,483	74,306
Blueberries	67	563	104	10,933	52,066
Cherries, Tart (RSP)	37	385	2,816	18,463	166,062
Cherries, Sweet	8	347	649	4,058	16,191
Peaches	44	679	135	31,547	37,164
Raspberries, Red	55	1,281	47	73,163	77,112
Strawberries, Total	4,976	51,052	902	434,166	503,919
Other Frozen Fruit	510	5,978	788	48,443	316,792

See footnotes at end of table.

--continued

**Stocks in Cold Storage: By Commodity, Region,
and United States, July 31, 2000 (continued)**

Commodity	New England	Middle Atlantic	East North Central	West North Central	South Atlantic
	<i>1,000 Pounds</i>	<i>1,000 Pounds</i>	<i>1,000 Pounds</i>	<i>1,000 Pounds</i>	<i>1,000 Pounds</i>
Frozen Juice					
Orange Juice Conc. ²	56		1,057	124	1,785,213
Other Juice Concentrate	119	8,727	8,206	1,296	156,752
Frozen Vegetables ³					
Asparagus		364	8,343	37	344
Limas, Fordhook		893	397	57	1,553
Limas, Baby		2,717	2,382	501	3,625
Green Beans, Reg. Cut		11,543	19,003	1,627	4,907
Green Beans, Fr. Style		4,098	7,624	308	639
Broccoli, Spears		5,604	2,873	233	2,320
Broccoli, Chopped & Cut		9,057	7,465	4,176	5,923
Brussels Sprouts		1,195	1,191	388	476
Carrots, Diced		2,219	9,452	590	1,063
Carrots, Other		11,126	10,535	955	3,156
Cauliflower		2,360	2,702	1,505	905
Corn, Cut		15,591	18,157	4,998	5,235
Corn, Cob		6,804	12,611	3,867	4,797
Mixed Vegetables		4,713	7,440	1,903	3,633
Okra		2,063	860	4,227	12,160
Onion Rings		691	6,989	1,718	625
Onions, Other		4,068	4,459	441	2,877
Blackeye Peas		153	102	51	960
Green Peas		58,771	44,724	14,573	15,245
Peas & Carrots Mixed		1,110	667	94	620
Spinach		15,746	4,253	1,486	6,423
Squash, Summer/Zucchini		3,635	7,172	434	9,710
Southern Greens		3,361	522	1,175	17,760
Other Vegetables		43,961	28,790	11,375	30,430
Potatoes					
French Fries	24,869	38,760	66,861	105,466	20,696
Other Frozen	5,562	9,111	37,509	7,542	3,181
Meat					
Frozen Beef					
Boneless ⁴	3,094	33,705	31,955	77,418	33,627
Beef Cuts ⁵	2,128	3,738	5,536	8,904	3,025
Frozen Pork					
Ribs ⁶	246	642	10,324	15,563	6,028
Trimmings ⁷	280	1,544	11,580	19,885	5,543
Other ⁸	2,380	2,216	13,798	32,259	13,682
Other					
Veal	96	545	1,947	365	80
Lamb & Mutton	372	1,189	1,394	1,586	465

See footnotes at end of table.

--continued

**Stocks in Cold Storage: By Commodity, Region,
and United States, July 31, 2000 (continued)**

Commodity	East South Central	West South Central	Mountain	Pacific	US Total
	<i>1,000 Pounds</i>	<i>1,000 Pounds</i>	<i>1,000 Pounds</i>	<i>1,000 Pounds</i>	<i>1,000 Pounds</i>
Frozen Juice					
Orange Juice Concentrate	108	4,822	1,976	67,746	1,861,102
Other Juice Concentrate	966	16,988	838	127,797	321,689
Frozen Vegetables ³					
Asparagus		705	128	4,991	14,912
Limas, Fordhook		75	109	1,027	4,111
Limas, Baby		655	2,314	8,453	20,647
Green Beans, Reg. Cut		1,780	255	47,551	86,666
Green Beans, Fr. Style		182	51	11,157	24,059
Broccoli, Spears		14,483	52	9,895	35,460
Broccoli, Chopped & Cut		30,323	1,576	42,659	101,179
Brussels Sprouts		844	77	9,766	13,937
Carrots, Diced		1,922	553	23,939	39,738
Carrots, Other		13,376	317	89,182	128,647
Cauliflower		11,022	95	16,243	34,832
Corn, Cut		1,841	2,679	86,267	134,768
Corn, Cob		2,097	608	69,123	99,907
Mixed Vegetables		8,294	65	25,066	51,114
Okra		39,994		849	60,153
Onion Rings		723	560	245	11,551
Onions, Other		3,432	7,203	20,586	43,066
Blackeye Peas		1,148		163	2,577
Green Peas		4,968	19,779	267,970	426,030
Peas & Carrots Mixed		513		4,713	7,717
Spinach		12,759	9,024	42,719	92,410
Squash, Summer/Zucchini		6,472	900	19,266	47,589
Southern Greens		13,863		634	37,315
Other Vegetables		38,414	3,917	144,332	301,219
Potatoes					
French Fries	979	10,566	255,913	402,934	927,044
Other Frozen	1,447	7,874	49,722	129,213	251,161
Meat					
Frozen Beef					
Boneless ⁴	6,902	57,253	4,504	62,404	310,862
Beef Cuts ⁵	3,071	8,669	8,228	11,967	55,266
Frozen Pork					
Ribs ⁶	1,502	1,145	20	1,976	37,446
Trimming ⁷	683	1,410	50	325	41,300
Other ⁸	7,409	9,371	154	5,492	86,761
Other					
Veal		160		1,147	4,340
Lamb & Mutton		1,215	953	3,334	10,508

¹ East North Central combined with South Atlantic. Mountain and West North Central Combined with West South Central.

² Middle Atlantic combined with South Atlantic.

³ New England combined with Middle Atlantic. East South Central combined with South Atlantic.

⁴ Includes all boxed boneless beef, such as ground beef, roasts, steaks, loins, strips, rounds, trimmings, etc. Variety meats (edible offal), such as tongues, livers, hearts, kidneys, and other organs removed from slaughtered beef, are included as miscellaneous freezer stocks.

⁵ Includes all boxed primal beef cuts, bone-in.

⁶ Includes spareribs and backribs.

⁷ Includes 42% regular trimmings, 72% special trimmings, boneless picnic meat, jowls, neckbone trimmings, blade, cheek, head, and shank meat, etc. Packaged bacon, sausage, and processed items, such as hot dogs and luncheon meats, are included in miscellaneous cooler or freezer stocks.

⁸ Includes ears, tails, feet, neckbones and snouts.

**Public General Warehouses: Cold Storage Space Occupied
by Region and United States, July 2000**

Region	Cooler				Freezer			
	Usable Space	Usable Space Occupied			Usable Space	Usable Space Occupied		
		Jul 31 2000	Jul 31 1999	Jun 30 2000		Jul 31 2000	Jul 31 1999	Jun 30 2000
	<i>1,000 Cu Ft</i>	<i>Percent</i>	<i>Percent</i>	<i>Percent</i>	<i>1,000 Cu Ft</i>	<i>Percent</i>	<i>Percent</i>	<i>Percent</i>
New England	2,167	64	66	71	19,654	73	68	73
Middle Atlantic	35,859	73	57	49	103,990	79	78	74
E. North Central	58,492	52	48	42	200,776	52	45	47
W. North Central	44,589	45	43	44	149,210	54	62	60
South Atlantic	47,838	49	44	45	185,916	64	58	57
E. South Central	8,969	70	53	55	69,719	47	41	42
W. South Central	20,856	46	47	44	134,091	72	67	69
Mountain	6,076	76	50	48	56,246	69	59	55
Pacific	42,802	38	34	30	277,527	67	62	64
US	267,648	52	46	43	1,197,129	63	59	60

Cold Storage Regions



Survey Procedures: Questionnaires are mailed about the 24th of each month to all operators on the list of approximately 1,400 public and private cold storage warehouses. In addition, apple data are obtained from special surveys and other sources (State Departments of Agriculture, U.S. Apple Association, etc.). All survey data represent stocks as of the end of the month.

Data are collected from warehouses artificially cooled to a temperature of 50 degrees Fahrenheit or lower, and whose food products are normally stored for 30 days or more. All food items in these facilities are reported regardless of the number of days stored at the time of the report. Also included are specialized storage facilities meeting the 30 day requirement, such as fruit houses, dairy manufacturing plants, frozen fruit, fruit juice, and vegetable processors, and poultry and meat packing plants. Excluded are stocks in space maintained by wholesalers, jobbers, distributors, chain stores, locker plants containing individual lockers, meat packer branch houses, and frozen food processors whose entire inventories are turned over more than once a month.

Estimating Procedures: Data for reporting firms are added to estimates for non-reporting firms to obtain regional and National totals. Estimates for non-reporting firms are obtained by multiplying the previous month's figure by a percent change from the previous month. The percent change is calculated for each item from totals of the current and previous month summed from firms that reported both months.

Revision Policy: Data are revised the following month based on late reports or corrected data. Final figures are published in the annual summary in February of the following year.

Reliability: Reports are received from 900 firms each month which represent about 70 percent of the total capacity. Firms that are not on the list or firms who have never reported are not represented in the data. Monthly data can vary due to different firms reporting month to month. Survey data are also subject to non-sampling errors such as omissions and mistakes in reporting and in processing the data. While these errors cannot be measured directly, they are minimized by carefully reviewing all reported data for consistency and reasonableness.

The next "Cold Storage" report will be released at 3 p.m. on September 20, 2000.

The United States Department of Agriculture (USDA) prohibits discrimination in all its programs on the basis of race, color, national origin, gender, religion, age, disability, political beliefs, sexual orientation, and marital or family status. (Not all prohibited bases apply to all programs.) Persons with disabilities who require alternative means for communication of program information (braille, large print, audiotape, etc.) should contact the USDA's TARGET Center at 202-720-2600 (voice and TDD).

To file a complaint of discrimination, write USDA, Director, Office of Civil Rights, Room 326-W, Whitten Building, 14th and Independence Avenue, SW, Washington, D.C., 20250-9410, or call 202-720-5964 (voice or TDD). USDA is an equal opportunity provider and employer.

ACCESS TO REPORTS!!

For your convenience, there are several ways to obtain NASS reports, data products, and services:

INTERNET ACCESS

All NASS reports are available free of charge on the worldwide Internet. For access, connect to the Internet and go to the NASS Home Page at: <http://www.usda.gov/nass/>. Select "Today's Reports" or Publications and then Reports by Calendar or Publications and then Search, by Title or Subject.

E-MAIL SUBSCRIPTION

There are two options for subscribing via e-mail. All NASS reports are available by subscription free of charge direct to your e-mail address. 1) Starting with the NASS Home Page at <http://www.usda.gov/nass/>, click on **Publications**, then click on the **Subscribe by E-mail** button which takes you to the page describing e-mail delivery of reports. Finally, click on **Go to the Subscription Page** and follow the instructions. 2) If you do NOT have Internet access, send an e-mail message to: usda-reports@usda.mannlib.cornell.edu. In the body of the message type the word: **list**.

AUTOFAX ACCESS

NASSFax service is available for some reports from your fax machine. Please call 202-720-2000, using the handset attached to your fax. Respond to the voice prompts. Document 0411 is a list of available reports.

PRINTED REPORTS OR DATA PRODUCTS

CALL OUR TOLL-FREE ORDER DESK: 800-999-6779 (U.S. and Canada)
Other areas, please call 703-834-0125 FAX: 703-834-0110
(Visa, MasterCard, check, or money order acceptable for payment.)

ASSISTANCE

For **assistance** with general agricultural statistics or further information about NASS or its products or services, contact the **Agricultural Statistics Hotline** at **800-727-9540**, 7:30 a.m. to 4:00 p.m. ET, or e-mail: nass@nass.usda.gov.

USDA to Hold Public Forum
October 16, 2000

Holiday Inn Mart Plaza
Chicago, Illinois

The National Agricultural Statistics Service will be organizing an open forum for Data Users. The purpose will be to provide updates on pending changes in the various statistical and information programs, and to seek comments and input from data users. The other USDA agencies to be represented will include the Agricultural Marketing Service, the Economic Research Service, the Foreign Agricultural Service, and the World Agricultural Outlook Board. The Foreign Trade Division from the Census Bureau and The National Weather Service will also be included in the meeting.

For registration details, see the NASS home page at <http://www.usda.gov/nass/> or contact Karlyn McCutcheon (NASS) at (202) 690-8141 or at hq_dapp@nass.usda.gov