



# Cold Storage

---

Released October 20, 2000, by the National Agricultural Statistics Service (NASS), Agricultural Statistics Board, U.S. Department of Agriculture. For information on "Cold Storage" call Linda Simpson at (202) 720-8784, office hours 7:00 a.m. to 4:30 p.m. ET.

## HIGHLIGHTS

**Frozen food stocks** in refrigerated warehouses on September 30, 2000, were greater than year earlier levels for red meat, fruit, and potatoes. Cooler stocks of pecans and apples were also higher than a year earlier.

Butter stocks were 16 percent below August 2000 but 19 percent above a year ago.

**Total red meat supplies** in freezers were 1 percent below August 2000 but 14 percent above September 1999. Frozen pork stocks were 2 percent below last month but 2 percent above last year. Stocks of pork bellies decreased 35 percent from last month but were 11 percent above September 1999 stocks.

**Total frozen poultry supplies** were up 1 percent from last month but 10 percent below last year's level. Total stocks of chicken were 1 percent above last month but 8 percent below September 1999. Total pounds of turkey in freezers increased 1 percent from last month but were 11 percent below last year.

**Public cooler occupancy** was at 43 percent of capacity, down 5 points from last year. Public freezer occupancy, at 63 percent, was down 2 percentage points from last year.

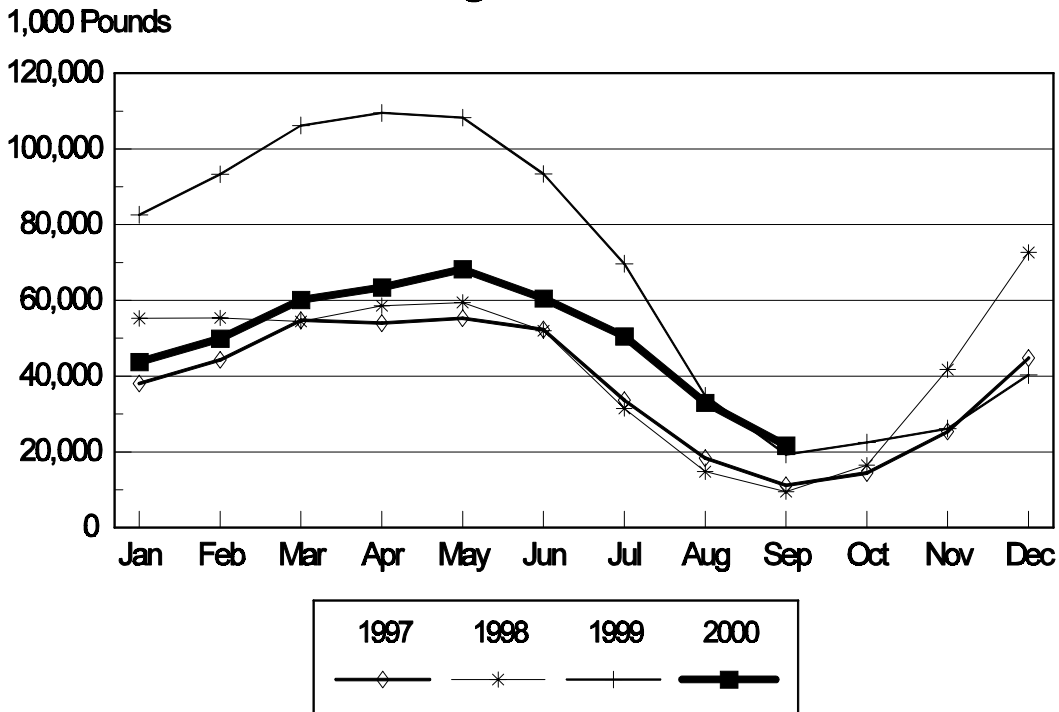
## Special Note

Included in this issue is a table showing total poultry stocks for the years 2000, 1995, 1990, 1985 and 1980.

## Table of Contents

	Page
Stocks in Cold Storage: By Commodity, United States, September 2000 .....	3
Stocks in Cold Storage: By Commodity, Region, and United States, August 31, 2000 .....	6
Stocks in Cold Storage: By Commodity, Region, and United States, September 30, 2000 .....	10
Public General Warehouses: Cold Storage Space Occupied by Region and United States, September 2000 .....	14
Total Poultry (excl. eggs) Stocks: September 30, 2000, 1995, 1990, 1985 and 1980 .....	15
Survey and Estimating Procedures, Revision Policy and Reliability .....	16

## Pork Bellies Cold Storage Stocks, 1997-2000



**Stocks in Cold Storage: By Commodity,  
United States, September 2000**

Commodity	Stocks in All Warehouses			Percent of		Public Warehouse Stocks
	Sep 30, 1999	Aug 31, 2000	Sep 30, 2000	Sep 1999	Aug 2000	Sep 30, 2000
	<i>1,000 Pounds</i>	<i>1,000 Pounds</i>	<i>1,000 Pounds</i>	<i>Percent</i>	<i>Percent</i>	<i>1,000 Lbs</i>
Fresh Fruit						
Apples						
Regular Storage	946,647	22,785	1,150,015	121		
Controlled Atmosphere	1,888,114	105,801	2,149,426	114		
Total	2,834,761	128,586	3,299,441	116		30,245
Pears						
Bartlett	191,042	140,143	139,618	73	100	
Other Varieties	360,591	7,030	394,743	109		
Total	551,633	147,173	534,361	97	363	2,934
Nuts						
Shelled						
Peanuts	417,594	453,021	289,763	69	64	
Pecans	18,783	37,444	31,500	168	84	
Other Shelled	89,457	140,571	136,691	153	97	
Total	525,834	631,036	457,954	87	73	248,882
In-Shell						
Peanuts	17,699	17,427	14,096	80	81	
Pecans	3,933	135,358	110,974		82	
Other In-Shell	5,938	4,200	18,357	309	437	
Total	27,570	156,985	143,427	520	91	61,665
Dairy Products						
Butter, Total	71,473	101,180	84,812	119	84	71,735
(Government Owned)	214	388	375	175	97	
Natural Cheese						
American, Total	473,639	592,836	557,617	118	94	
(Government Owned)	9	402	607		151	
Swiss	10,483	6,145	7,929	76	129	
Other Natural Cheese	167,148	201,034	170,213	102	85	
Total	651,270	800,015	735,759	113	92	465,395
Eggs, Frozen						
Whites	577	593	448	78	76	
Yolks	697	565	610	88	108	
Whole & Mixed	7,202	9,571	9,602	133	100	
Unclassified	1,006	4,182	3,761	374	90	
Total	9,482	14,911	14,421	152	97	14,119
Frozen Poultry						
Chicken						
Broilers (Whole)	29,774	33,422	30,761	103	92	
Hens	9,880	6,748	8,741	88	130	
Other Chicken	854,961	768,271	779,180	91	101	
Total	894,615	808,441	818,682	92	101	
Turkey						
Whole Turkey	400,438	308,853	339,396	85	110	
Other Turkey	195,920	215,918	189,995	97	88	
Total	596,358	524,771	529,391	89	101	
Ducks	5,990	5,110	5,733	96	112	
Total	1,496,963	1,338,322	1,353,806	90	101	1,257,290

**Stocks in Cold Storage: By Commodity,  
United States, September 2000 (Continued)**

Commodity	Stocks in All Warehouses			Percent of		Public Warehouse Stocks
	Sep 30, 1999	Aug 31, 2000	Sep 30, 2000	Sep 1999	Aug 2000	Sep 30, 2000
	<i>1,000 Pounds</i>	<i>1,000 Pounds</i>	<i>1,000 Pounds</i>	<i>Percent</i>	<i>Percent</i>	<i>1,000 Lbs</i>
Frozen Fruit						
Apples	55,378	59,792	56,566	102	95	
Apricots	12,119	13,992	12,128	100	87	
Blackberries, Total	30,622	28,685	30,710	100	107	
IQF	20,392	17,858	19,714	97	110	
Pails and Tubs	2,245	2,221	2,202	98	99	
Barrels, 400 lbs net	6,511	6,962	6,476	99	93	
Concentrate	1,474	1,644	2,318	157	141	
Blueberries	95,381	109,358	110,545	116	101	
Boysenberries	6,355	6,224	5,887	93	95	
Cherries, Tart (RSP)	149,070	160,543	142,094	95	89	
Cherries, Tart (Juice)	2,440	2,572	2,087	86	81	
Cherries, Sweet	14,774	15,740	14,662	99	93	
Grapes	4,565	2,878	6,155	135	214	
Peaches	83,245	73,776	95,249	114	129	
Raspberries, Black	1,908	3,392	3,106	163	92	
Raspberries, Red, Total	73,351	75,739	69,473	95	92	
IQF	18,907	20,712	19,262	102	93	
Pails and Tubs	17,454	19,989	18,763	107	94	
Barrels, 400 lbs net	35,343	33,408	29,702	84	89	
Concentrate	1,647	1,630	1,746	106	107	
Strawberries, Total	332,995	486,319	442,661	133	91	
Other Frozen Fruit	273,741	263,739	247,121	90	94	
Total	1,135,944	1,302,749	1,238,444	109	95	924,320
Frozen Juice						
Orange Juice Conc. <sup>1</sup>	1,443,391	1,457,684	1,345,022	93	92	
(Gallon Equivalent)	145,856	147,300	135,916			
Other Juice Concentrate	353,108	317,343	294,731	83	93	
Total	1,796,499	1,775,027	1,639,753	91	92	209,514
Frozen Vegetables						
Asparagus	16,049	14,661	14,569	91	99	
Limas, Fordhook	14,746	9,436	17,394	118	184	
Limas, Baby	57,236	24,817	34,794	61	140	
Green Beans, Reg. Cut	216,690	163,366	186,765	86	114	
Green Beans, Fr. Style	44,215	36,101	48,223	109	134	
Broccoli, Spears	46,735	34,587	34,448	74	100	
Broccoli, Chopped & Cut	134,059	102,700	89,330	67	87	
Brussels Sprouts	9,075	13,511	12,870	142	95	
Carrots, Diced	37,333	27,863	25,827	69	93	
Carrots, Other	144,463	123,746	135,226	94	109	
Cauliflower	33,861	33,441	34,510	102	103	
Corn, Cut	389,471	208,683	389,282	100	187	
Corn, Cob	255,214	170,690	281,734	110	165	
Mixed Vegetables	50,863	49,335	47,967	94	97	
Okra	61,690	64,563	59,720	97	92	
Onion Rings	14,207	12,001	13,568	96	113	
Onions, Other	31,338	40,864	34,442	110	84	
Blackeye Peas	7,479	3,025	3,120	42	103	
Green Peas	376,230	429,450	409,837	109	95	
Peas & Carrots Mixed	9,620	8,867	7,107	74	80	
Spinach	99,790	79,499	70,036	70	88	
Squash, Summer/Zucchini	63,957	48,285	48,422	76	100	
Southern Greens	16,888	31,428	28,938	171	92	
Other Vegetables	309,624	315,602	352,785	114	112	
Total	2,440,833	2,046,521	2,380,914	98	116	1,749,565

See footnotes at end of table.

--continued

**Stocks in Cold Storage: By Commodity,  
United States, September 2000 (Continued)**

Commodity	Stocks in All Warehouses			Percent of		Public Warehouse Stocks
	Sep 30, 1999	Aug 31, 2000	Sep 30, 2000	Sep 1999	Aug 2000	Sep 30, 2000
	<i>1,000 Pounds</i>	<i>1,000 Pounds</i>	<i>1,000 Pounds</i>	<i>Percent</i>	<i>Percent</i>	<i>1,000 Lbs</i>
Potatoes						
French Fries	1,002,245	923,400	1,037,218	103	112	
Other Frozen	233,301	262,303	249,432	107	95	
Total	1,235,546	1,185,703	1,286,650	104	109	932,502
Meat						
Frozen Beef						
Boneless <sup>2</sup>	255,512	322,900	322,263	126	100	
Beef Cuts <sup>3</sup>	38,857	55,242	60,440	156	109	
Total	294,369	378,142	382,703	130	101	378,955
(Government Owned)	4,202	1,846	1,200	29	65	
Frozen Pork						
Picnics, Bone-in	7,925	7,787	5,982	75	77	
Hams, Total	135,462	141,132	147,354	109	104	136,133
Bone-in	85,996	79,471	83,082	97	105	79,172
Boneless <sup>4</sup>	49,466	61,661	64,272	130	104	56,961
Bellies	19,273	33,005	21,341	111	65	
Loins, Total	16,120	17,165	18,526	115	108	16,565
Bone-in	8,360	6,195	7,025	84	113	
Boneless <sup>5</sup>	7,760	10,970	11,501	148	105	
Ribs <sup>6</sup>	37,135	29,863	32,756	88	110	
Butts	7,067	7,312	8,140	115	111	
Trimmings <sup>7</sup>	46,387	40,577	43,485	94	107	
Other <sup>8</sup>	89,839	89,549	76,352	85	85	
Variety Meats <sup>9</sup>	56,919	61,105	67,372	118	110	
Unclassified <sup>10</sup>	14,458	21,514	18,017	125	84	
Total	430,585	449,009	439,325	102	98	391,495
(Government Owned)	6,691	3,471	3,470	52	100	
Other						
Veal	3,802	4,491	4,596	121	102	
Lamb & Mutton	9,815	14,042	12,867	131	92	
Total	13,617	18,533	17,463	128	94	17,180
Canned						
Canned Hams	7,048	7,015	7,178	102	102	
Other Canned Meat	660	950	1,090	165	115	
Total	7,708	7,965	8,268	107	104	5,197
Total	746,279	853,649	847,759	114	99	792,827
Miscellaneous						
Cooler	1,283,984	698,770	945,658	74	135	550,099
Freezer	1,955,614	2,178,014	2,258,124	115	104	2,189,376
Total	3,239,598	2,876,784	3,203,782	99	111	2,739,475
Commodities						
Stored in Coolers	5,882,760	2,570,530	6,124,868	104	238	1,364,417
Stored in Freezers	10,880,925	10,788,111	11,096,415	102	103	8,136,051
Total	16,763,685	13,358,641	17,221,283	103	129	9,500,468

<sup>1</sup> Adjusted to 42.0 degrees Brix equivalent (9.896 pounds per gallon).

<sup>2</sup> Includes all boxed boneless beef, such as ground beef, roasts, steaks, loins, strips, rounds, trimmings, etc. Variety meats (edible offal), such as tongues, livers, hearts, kidneys, and other organs removed from slaughtered beef, are included as miscellaneous freezer stocks.

<sup>3</sup> Includes all boxed primal beef cuts, bone-in.

<sup>4</sup> Includes full ham, bone removed and individual muscles separated.

<sup>5</sup> Includes pork tenderloins.

<sup>6</sup> Includes spareribs and backribs.

<sup>7</sup> Includes 42% regular trimmings, 72% special trimmings, boneless picnic meat, jowls, neckbone trimmings, blade, cheek, head, and shank meat, etc. Packaged bacon, sausage, and processed items, such as hot dogs and luncheon meats, are included in miscellaneous cooler or freezer stocks.

<sup>8</sup> Includes ears, tails, feet, neckbones and snouts.

<sup>9</sup> Includes tongues, kidneys, livers, stomachs, hearts, chitterlings, salivary glands, and other organs removed from slaughtered hogs.

<sup>10</sup> Includes pork unable to be classified elsewhere in this report.

**Stocks in Cold Storage: By Commodity, Region,  
and United States, August 31, 2000**

Commodity	New England	Middle Atlantic	East North Central	West North Central	South Atlantic
	<i>1,000 Pounds</i>	<i>1,000 Pounds</i>	<i>1,000 Pounds</i>	<i>1,000 Pounds</i>	<i>1,000 Pounds</i>
Nuts					
Shelled					
Peanuts		54	224	29	302,695
Pecans <sup>1</sup>		102			11,015
In-Shell					
Pecans <sup>1</sup>					14,509
Dairy Products					
Natural Cheese					
American, Total	22,198	53,921	302,803	123,900	5,661
Other Natural Cheese	1,136	12,005	99,448	75,423	646
Frozen Poultry					
Broilers (Whole)	90	1,707	577	420	8,764
Hens	325	88	658	1,139	1,783
Other Chicken	1,491	27,220	17,289	29,943	212,487
Total	1,906	29,015	18,524	31,502	223,034
Whole Turkeys	10,839	33,083	29,499	52,900	43,795
Other Turkey	361	16,889	15,154	65,689	56,660
Total	11,200	49,972	44,653	118,589	100,455
Ducks		91	4,585	130	34
Total	13,106	79,078	67,762	150,221	323,523
Frozen Fruit					
Apples	25	13,157	29,973	115	214
Blueberries	18,309	9,255	50,073	178	4,344
Cherries, Tart (RSP)	30	10,950	133,294	79	163
Cherries, Sweet		620	10,937	126	6
Peaches	22	2,640	4,219	54	324
Raspberries, Red	225	1,210	1,097	112	112
Strawberries, Total	112	3,881	4,991	2,148	933
Other Frozen Fruit	1,291	17,828	185,624	743	1,164

See footnotes at end of table.

--continued

**Stocks in Cold Storage: By Commodity, Region,  
and United States, August 31, 2000 (continued)**

Commodity	East South Central	West South Central	Mountain	Pacific	US Total
	<i>1,000 Pounds</i>	<i>1,000 Pounds</i>	<i>1,000 Pounds</i>	<i>1,000 Pounds</i>	<i>1,000 Pounds</i>
Nuts					
Shelled					
Peanuts	43,183	105,882	145	809	453,021
Pecans <sup>1</sup>	1,017	25,003		307	37,444
In-Shell					
Pecans <sup>1</sup>	2,684	118,165			135,358
Dairy Products					
Natural Cheese					
American, Total		487	8,654	75,212	592,836
Other Natural Cheese	194	521	1,390	10,271	201,034
Frozen Poultry					
Broilers (Whole)	3,336	16,798	612	1,118	33,422
Hens	1,633	638	91	393	6,748
Other Chicken	150,836	281,043	2,639	45,323	768,271
Total	155,805	298,479	3,342	46,834	808,441
Whole Turkeys	11,749	55,187	14,557	57,244	308,853
Other Turkey	3,513	27,521	9,275	20,856	215,918
Total	15,262	82,708	23,832	78,100	524,771
Ducks	78	60	1	131	5,110
Total	171,145	381,247	27,175	125,065	1,338,322
Frozen Fruit					
Apples	124	2,401	70	13,713	59,792
Blueberries	82	419	190	26,508	109,358
Cherries, Tart (RSP)	38	446	2,772	12,771	160,543
Cherries, Sweet	3	243	402	3,403	15,740
Peaches	63	1,815	108	64,531	73,776
Raspberries, Red	217	1,169	10	71,587	75,739
Strawberries, Total	4,909	46,233	201	422,911	486,319
Other Frozen Fruit	508	5,700	746	50,135	263,739

See footnotes at end of table.

--continued

**Stocks in Cold Storage: By Commodity, Region,  
and United States, August 31, 2000 (continued)**

Commodity	New England	Middle Atlantic	East North Central	West North Central	South Atlantic
	<i>1,000 Pounds</i>	<i>1,000 Pounds</i>	<i>1,000 Pounds</i>	<i>1,000 Pounds</i>	<i>1,000 Pounds</i>
Frozen Juice					
Orange Juice Conc. <sup>2</sup>	8		1,078	118	1,393,249
Other Juice Concentrate	139	8,995	8,556	1,017	145,529
Frozen Vegetables <sup>3</sup>					
Asparagus		487	7,929	24	282
Limas, Fordhook		1,301	752	44	1,290
Limas, Baby		2,822	1,712	449	4,300
Green Beans, Reg. Cut		21,979	37,845	2,235	6,863
Green Beans, Fr. Style		7,658	10,749	368	539
Broccoli, Spears		5,116	2,632	254	2,344
Broccoli, Chopped & Cut		7,385	7,563	3,932	5,303
Brussels Sprouts		1,455	1,323	317	496
Carrots, Diced		2,096	7,330	380	985
Carrots, Other		10,503	11,521	1,073	3,861
Cauliflower		2,131	3,453	1,453	1,032
Corn, Cut		20,164	27,791	11,633	6,504
Corn, Cob		11,609	14,794	15,812	4,440
Mixed Vegetables		4,115	7,374	1,579	3,387
Okra		2,239	989	4,679	9,361
Onion Rings		599	7,166	1,522	764
Onions, Other		4,603	4,516	463	2,567
Blackeye Peas		634	101	81	1,120
Green Peas		62,797	40,300	13,076	14,431
Peas & Carrots Mixed		1,130	639	45	736
Spinach		13,588	3,436	1,384	5,283
Squash, Summer/Zucchini		3,623	11,857	429	8,313
Southern Greens		3,005	531	1,054	14,314
Other Vegetables		46,546	30,473	11,341	25,700
Potatoes					
French Fries	25,255	42,465	49,700	88,478	23,317
Other Frozen	4,674	10,916	39,666	9,137	3,024
Meat					
Frozen Beef					
Boneless	3,105	36,955	28,687	87,585	25,251
Beef Cuts	2,964	3,917	4,949	8,967	3,409
Frozen Pork					
Ribs	191	617	8,087	12,220	4,450
Trimnings	150	1,642	11,749	18,492	6,418
Other	2,152	2,037	13,354	32,696	13,913
Other					
Veal	96	669	2,163	317	89
Lamb & Mutton	353	4,507	1,291	1,574	487

See footnotes at end of table.

--continued



**Stocks in Cold Storage: By Commodity, Region,  
and United States, August 31, 2000 (continued)**

Commodity	East South Central	West South Central	Mountain	Pacific	US Total
	<i>1,000 Pounds</i>	<i>1,000 Pounds</i>	<i>1,000 Pounds</i>	<i>1,000 Pounds</i>	<i>1,000 Pounds</i>
Frozen Juice					
Orange Juice Concentrate	90	4,956	1,656	56,529	1,457,684
Other Juice Concentrate	1,147	19,720	764	131,476	317,343
Frozen Vegetables <sup>3</sup>					
Asparagus		521	125	5,293	14,661
Limas, Fordhook		66	23	5,960	9,436
Limas, Baby		564	2,543	12,427	24,817
Green Beans, Reg. Cut		2,610	233	91,601	163,366
Green Beans, Fr. Style		258	88	16,441	36,101
Broccoli, Spears		13,999	14	10,228	34,587
Broccoli, Chopped & Cut		30,870	1,427	46,220	102,700
Brussels Sprouts		739	42	9,139	13,511
Carrots, Diced		1,585	500	14,987	27,863
Carrots, Other		12,360	225	84,203	123,746
Cauliflower		9,984	94	15,294	33,441
Corn, Cut		1,858	1,573	139,160	208,683
Corn, Cob		1,825	9,400	112,810	170,690
Mixed Vegetables		6,610	59	26,211	49,335
Okra		46,436		859	64,563
Onion Rings		986	649	315	12,001
Onions, Other		2,668	6,314	19,733	40,864
Blackeye Peas		964		125	3,025
Green Peas		3,042	20,002	275,802	429,450
Peas & Carrots Mixed		498		5,819	8,867
Spinach		8,348	8,208	39,252	79,499
Squash, Summer/Zucchini		5,206	1,172	17,685	48,285
Southern Greens		11,811		713	31,428
Other Vegetables		38,284	3,565	159,693	315,602
Potatoes					
French Fries	1,124	8,618	250,026	434,417	923,400
Other Frozen	1,020	7,115	53,299	133,452	262,303
Meat					
Frozen Beef					
Boneless <sup>4</sup>	7,786	59,660	5,246	68,625	322,900
Beef Cuts <sup>5</sup>	2,836	8,475	7,960	11,765	55,242
Frozen Pork					
Ribs <sup>6</sup>	1,143	1,797	27	1,331	29,863
Trimmings <sup>7</sup>	246	1,582	42	256	40,577
Other <sup>8</sup>	9,551	9,059	206	6,581	89,549
Other					
Veal		73		1,084	4,491
Lamb & Mutton		1,307	733	3,790	14,042

<sup>1</sup> East North Central combined with South Atlantic. Mountain and West North Central combined with West South Central.

<sup>2</sup> Middle Atlantic combined with South Atlantic.

<sup>3</sup> New England combined with Middle Atlantic. East South Central combined with South Atlantic.

<sup>4</sup> Includes all boxed boneless beef, such as ground beef, roasts, steaks, loins, strips, rounds, trimmings, etc. Variety meats (edible offal), such as tongues, livers, hearts, kidneys, and other organs removed from slaughtered beef, are included as miscellaneous freezer stocks.

<sup>5</sup> Includes all boxed primal beef cuts, bone-in.

<sup>6</sup> Includes spareribs and backribs.

<sup>7</sup> Includes 42% regular trimmings, 72% special trimmings, boneless picnic meat, jowls, neckbone trimmings, blade, cheek, head, and shank meat, etc. Packaged bacon, sausage, and processed items, such as hot dogs and luncheon meats, are included in miscellaneous cooler or freezer stocks.

<sup>8</sup> Includes ears, tails, feet, neckbones and snouts.

**Stocks in Cold Storage: By Commodity, Region,  
and United States, September 30, 2000**

Commodity	New England	Middle Atlantic	East North Central	West North Central	South Atlantic
	<i>1,000 Pounds</i>	<i>1,000 Pounds</i>	<i>1,000 Pounds</i>	<i>1,000 Pounds</i>	<i>1,000 Pounds</i>
Nuts					
Shelled					
Peanuts	5	39	157	21	196,781
Pecans <sup>1</sup>		141			9,037
In-Shell					
Pecans <sup>1</sup>		24			12,580
Dairy Products					
Natural Cheese					
American, Total	20,875	53,362	281,100	111,527	5,342
Other Natural Cheese	900	9,438	76,215	72,587	679
Frozen Poultry					
Broilers (Whole)	88	1,097	610	379	9,200
Hens	234	113	619	1,111	1,819
Other Chicken	1,815	27,944	17,546	29,995	229,462
Total	2,137	29,154	18,775	31,485	240,481
Whole Turkeys	11,297	35,160	32,623	56,350	47,257
Other Turkey	359	16,415	13,746	57,850	48,811
Total	11,656	51,575	46,369	114,200	96,068
Ducks		386	4,326	129	35
Total	13,793	81,115	69,470	145,814	336,584
Frozen Fruit					
Apples	11	14,636	27,152	101	163
Blueberries	20,693	9,059	49,208	242	5,257
Cherries, Tart (RSP)	45	11,472	116,168	74	28
Cherries, Sweet		534	10,424	110	9
Peaches	28	2,443	7,587	77	367
Raspberries, Red	207	1,119	1,058	109	127
Strawberries, Total	81	3,307	4,385	2,028	934
Other Frozen Fruit	9,096	17,109	163,231	751	1,362

See footnotes at end of table.

--continued

**Stocks in Cold Storage: By Commodity, Region,  
and United States, September 30, 2000 (continued)**

Commodity	East South Central	West South Central	Mountain	Pacific	US Total
	<i>1,000 Pounds</i>	<i>1,000 Pounds</i>	<i>1,000 Pounds</i>	<i>1,000 Pounds</i>	<i>1,000 Pounds</i>
Nuts					
Shelled					
Peanuts	28,562	63,586	134	478	289,763
Pecans <sup>1</sup>	545	21,497		280	31,500
In-Shell					
Pecans <sup>1</sup>	1,221	97,149			110,974
Dairy Products					
Natural Cheese					
American, Total		492	8,782	76,137	557,617
Other Natural Cheese	170	673	1,287	8,264	170,213
Frozen Poultry					
Broilers (Whole)	3,686	14,157	517	1,027	30,761
Hens	1,707	2,719	90	329	8,741
Other Chicken	161,228	266,673	2,776	41,741	779,180
Total	166,621	283,549	3,383	43,097	818,682
Whole Turkeys	11,979	57,475	16,536	70,719	339,396
Other Turkey	3,303	23,660	6,724	19,127	189,995
Total	15,282	81,135	23,260	89,846	529,391
Ducks	78	628	1	150	5,733
Total	181,981	365,312	26,644	133,093	1,353,806
Frozen Fruit					
Apples	133	2,634	67	11,669	56,566
Blueberries	58	607	191	25,230	110,545
Cherries, Tart (RSP)	29	326	2,521	11,431	142,094
Cherries, Sweet	18	269	334	2,964	14,662
Peaches	72	2,180	139	82,356	95,249
Raspberries, Red	117	725	9	66,002	69,473
Strawberries, Total	4,782	40,163	366	386,615	442,661
Other Frozen Fruit	366	7,670	603	46,933	247,121

See footnotes at end of table.

--continued

**Stocks in Cold Storage: By Commodity, Region,  
and United States, September 30, 2000 (continued)**

Commodity	New England	Middle Atlantic	East North Central	West North Central	South Atlantic
	<i>1,000 Pounds</i>	<i>1,000 Pounds</i>	<i>1,000 Pounds</i>	<i>1,000 Pounds</i>	<i>1,000 Pounds</i>
Frozen Juice					
Orange Juice Conc. <sup>2</sup>	9		1,018	66	1,278,620
Other Juice Concentrate	349	8,315	6,936	1,953	132,533
Frozen Vegetables <sup>3</sup>					
Asparagus		482	7,442	23	340
Limas, Fordhook		1,449	838	71	2,063
Limas, Baby		4,824	2,480	954	6,434
Green Beans, Reg. Cut		34,327	49,344	2,125	6,412
Green Beans, Fr. Style		9,911	16,891	719	688
Broccoli, Spears		4,796	2,539	298	2,025
Broccoli, Chopped & Cut		7,495	7,900	3,783	5,910
Brussels Sprouts		1,646	1,233	271	446
Carrots, Diced		1,859	7,830	390	1,421
Carrots, Other		10,818	11,385	1,059	4,530
Cauliflower		2,202	3,446	1,405	1,013
Corn, Cut		38,113	55,962	18,672	6,362
Corn, Cob		26,176	18,844	26,951	5,430
Mixed Vegetables		3,838	7,924	1,402	3,348
Okra		2,379	929	6,026	9,441
Onion Rings		680	7,978	2,289	802
Onions, Other		4,361	4,281	401	2,797
Blackeye Peas		605	107	71	1,164
Green Peas		62,037	37,462	10,641	14,819
Peas & Carrots Mixed		1,077	617	36	704
Spinach		12,911	3,315	1,072	4,772
Squash, Summer/Zucchini		3,604	12,537	715	7,283
Southern Greens		2,934	522	976	13,238
Other Vegetables		47,546	32,113	13,929	29,926
Potatoes					
French Fries	27,902	43,130	60,751	101,631	24,870
Other Frozen	4,145	7,403	37,615	9,372	2,768
Meat					
Frozen Beef					
Boneless <sup>4</sup>	2,932	39,453	29,383	83,030	26,683
Beef Cuts <sup>5</sup>	2,974	3,983	5,052	9,294	3,309
Frozen Pork					
Ribs <sup>6</sup>	211	560	9,350	13,920	3,827
Trimmings <sup>7</sup>	161	1,635	13,417	19,338	6,583
Other <sup>8</sup>	1,933	2,240	13,493	33,025	8,806
Other					
Veal	105	554	1,497	303	51
Lamb & Mutton	351	3,997	1,152	2,503	408

See footnotes at end of table.

--continued

**Stocks in Cold Storage: By Commodity, Region,  
and United States, September 30, 2000 (continued)**

Commodity	East South Central	West South Central	Mountain	Pacific	US Total
	<i>1,000 Pounds</i>	<i>1,000 Pounds</i>	<i>1,000 Pounds</i>	<i>1,000 Pounds</i>	<i>1,000 Pounds</i>
Frozen Juice					
Orange Juice Concentrate	83	4,397	1,484	59,345	1,345,022
Other Juice Concentrate	889	19,422	749	123,585	294,731
Frozen Vegetables <sup>3</sup>					
Asparagus		517	110	5,655	14,569
Limas, Fordhook		100	27	12,846	17,394
Limas, Baby		530	2,657	16,915	34,794
Green Beans, Reg. Cut		2,363	220	91,974	186,765
Green Beans, Fr. Style		234	61	19,719	48,223
Broccoli, Spears		14,018	8	10,764	34,448
Broccoli, Chopped & Cut		19,246	1,206	43,790	89,330
Brussels Sprouts		653	42	8,579	12,870
Carrots, Diced		1,638	491	12,198	25,827
Carrots, Other		12,181	290	94,963	135,226
Cauliflower		10,052	95	16,297	34,510
Corn, Cut		2,073	3,052	265,048	389,282
Corn, Cob		2,564	11,305	190,464	281,734
Mixed Vegetables		6,514	73	24,868	47,967
Okra		40,198		747	59,720
Onion Rings		842	661	316	13,568
Onions, Other		2,294	5,740	14,568	34,442
Blackeye Peas		1,041		132	3,120
Green Peas		2,897	20,094	261,887	409,837
Peas & Carrots Mixed		487		4,186	7,107
Spinach		7,465	6,881	33,620	70,036
Squash, Summer/Zucchini		4,541	1,091	18,651	48,422
Southern Greens		10,516		752	28,938
Other Vegetables		44,556	3,830	180,885	352,785
Potatoes					
French Fries	1,225	9,704	301,620	466,385	1,037,218
Other Frozen	917	7,478	51,716	128,018	249,432
Meat					
Frozen Beef					
Boneless <sup>4</sup>	7,819	63,075	3,738	66,150	322,263
Beef Cuts <sup>5</sup>	2,904	13,622	7,997	11,305	60,440
Frozen Pork					
Ribs <sup>6</sup>	1,360	1,736	30	1,762	32,756
Trimmings <sup>7</sup>	197	1,769	52	333	43,485
Other <sup>8</sup>	9,627	2,714	176	4,338	76,352
Other					
Veal		25		2,061	4,596
Lamb & Mutton		278	667	3,511	12,867

<sup>1</sup> East North Central combined with South Atlantic. Mountain and West North Central Combined with West South Central.

<sup>2</sup> Middle Atlantic combined with South Atlantic.

<sup>3</sup> New England combined with Middle Atlantic. East South Central combined with South Atlantic.

<sup>4</sup> Includes all boxed boneless beef, such as ground beef, roasts, steaks, loins, strips, rounds, trimmings, etc. Variety meats (edible offal), such as tongues, livers, hearts, kidneys, and other organs removed from slaughtered beef, are included as miscellaneous freezer stocks.

<sup>5</sup> Includes all boxed primal beef cuts, bone-in.

<sup>6</sup> Includes spareribs and backribs.

<sup>7</sup> Includes 42% regular trimmings, 72% special trimmings, boneless picnic meat, jowls, neckbone trimmings, blade, cheek, head, and shank meat, etc. Packaged bacon, sausage, and processed items, such as hot dogs and luncheon meats, are included in miscellaneous cooler or freezer stocks.

<sup>8</sup> Includes ears, tails, feet, neckbones and snouts.

**Public General Warehouses: Cold Storage Space Occupied  
by Region and United States, September 2000**

Region	Cooler				Freezer			
	Usable Space	Usable Space Occupied			Usable Space	Usable Space Occupied		
		Sep 30 2000	Sep 30 1999	Aug 31 2000		Sep 30 2000	Sep 30 1999	Aug 31 2000
	<i>1,000 Cu Ft</i>	<i>Percent</i>	<i>Percent</i>	<i>Percent</i>	<i>1,000 Cu Ft</i>	<i>Percent</i>	<i>Percent</i>	<i>Percent</i>
New England	2,167	61	54	57	19,650	71	70	71
Middle Atlantic	35,856	64	47	44	104,401	81	70	69
E. North Central	56,977	50	44	47	198,844	64	46	49
W. North Central	44,602	39	45	46	149,088	50	58	59
South Atlantic	47,852	43	40	35	185,261	62	58	61
E. South Central	8,958	65	54	54	69,671	45	40	45
W. South Central	20,868	42	49	43	134,595	67	68	62
Mountain	7,964	74	61	53	57,116	70	54	59
Pacific	43,769	41	42	40	276,234	73	74	78
US	269,013	48	45	43	1,194,860	65	61	63

## Cold Storage Regions



**Total Poultry (excluding eggs) Stocks in Cold Storage:  
by Region and United States, September 30, 2000, 1995, 1990, 1985 and 1980**

Region	September 30									
	2000		1995		1990		1985		1980	
	<i>1,000 Pounds</i>	<i>Pct of Total</i>	<i>1,000 Pounds</i>	<i>Pct of Total</i>	<i>1,000 Pounds</i>	<i>Pct of Total</i>	<i>1,000 Pounds</i>	<i>Pct of Total</i>	<i>1,000 Pounds</i>	<i>Pct of Total</i>
New England	13,793	1.0	16,270	1.4	17,780	2.1	14,622	2.3	22,098	4.0
Middle Atlantic	81,115	6.0	83,493	7.0	50,084	5.9	47,425	7.6	55,262	9.9
E. No. Central	69,470	5.1	115,854	9.7	135,257	15.8	88,208	14.1	66,206	11.9
W. No. Central	145,814	10.8	162,401	13.6	121,543	14.2	84,697	13.5	125,043	22.5
South Atlantic	336,584	24.9	241,164	20.3	185,910	21.6	158,689	25.4	113,432	20.3
E. So. Central	181,981	13.4	106,257	8.9	39,985	4.7	22,328	3.6	29,228	5.3
W. So. Central	365,312	27.0	303,196	25.4	144,485	16.9	95,109	15.2	66,222	11.9
Mount	26,644	2.0	33,628	2.8	32,941	3.9	26,353	4.2	20,040	3.6
Pacific	133,093	9.8	129,706	10.9	127,030	14.9	88,272	14.1	58,709	10.6
US	1,353,806	100.0	1,191,969	100.0	855,015	100.0	625,703	100.0	556,240	100.0

Total September 30 stocks of poultry, including chicken, turkeys and ducks but excluding eggs, in the United States have increased almost three-fold during the past 20 years. The largest growth occurred in the South Central area consisting of Alabama, Arkansas, Kentucky, Louisiana, Mississippi, Oklahoma, Tennessee, and Texas. This region is storing over five times what was stored in 1980. This area also contains over 40 percent of the total U.S. poultry stocks compared with less than 20 percent in 1980.

The South Atlantic area consisting of Delaware, Florida, Georgia, Maryland, North Carolina, South Carolina, Virginia, and West Virginia has doubled its stocks of poultry in 20 years, but has remained relatively stable (20.3 percent in 1980 vs 24.9 percent in 2000) in percentage of U.S. stocks held.

**Survey Procedures:** Questionnaires are mailed about the 24th of each month to all operators on the list of approximately 1,400 public and private cold storage warehouses. In addition, apple data are obtained from special surveys and other sources (State Departments of Agriculture, U.S. Apple Association, etc.). All survey data represent stocks as of the end of the month.

Data are collected from warehouses artificially cooled to a temperature of 50 degrees Fahrenheit or lower, and whose food products are normally stored for 30 days or more. All food items in these facilities are reported regardless of the number of days stored at the time of the report. Also included are specialized storage facilities meeting the 30 day requirement, such as fruit houses, dairy manufacturing plants, frozen fruit, fruit juice, and vegetable processors, and poultry and meat packing plants. Excluded are stocks in space maintained by wholesalers, jobbers, distributors, chain stores, locker plants containing individual lockers, meat packer branch houses, and frozen food processors whose entire inventories are turned over more than once a month.

**Estimating Procedures:** Data for reporting firms are added to estimates for non-reporting firms to obtain regional and National totals. Estimates for non-reporting firms are obtained by multiplying the previous month's figure by a percent change from the previous month. The percent change is calculated for each item from totals of the current and previous month summed from firms that reported both months.

**Revision Policy:** Data are revised the following month based on late reports or corrected data. Final figures are published in the annual summary in February of the following year.

**Reliability:** Reports are received from 900 firms each month which represent about 70 percent of the total capacity. Firms that are not on the list or firms who have never reported are not represented in the data. Monthly data can vary due to different firms reporting month to month. Survey data are also subject to non-sampling errors such as omissions and mistakes in reporting and in processing the data. While these errors cannot be measured directly, they are minimized by carefully reviewing all reported data for consistency and reasonableness.



The next "Cold Storage" report will be released at 3 p.m. on November 20, 2000.

The United States Department of Agriculture (USDA) prohibits discrimination in all its programs on the basis of race, color, national origin, gender, religion, age, disability, political beliefs, sexual orientation, and marital or family status. (Not all prohibited bases apply to all programs.) Persons with disabilities who require alternative means for communication of program information (braille, large print, audiotape, etc.) should contact the USDA's TARGET Center at 202-720-2600 (voice and TDD).

To file a complaint of discrimination, write USDA, Director, Office of Civil Rights, Room 326-W, Whitten Building, 14th and Independence Avenue, SW, Washington, D.C., 20250-9410, or call 202-720-5964 (voice or TDD). USDA is an equal opportunity provider and employer.

## ACCESS TO REPORTS!!

---

For your convenience, there are several ways to obtain NASS reports, data products, and services:

### INTERNET ACCESS

All NASS reports are available free of charge on the worldwide Internet. For access, connect to the Internet and go to the NASS Home Page at: <http://www.usda.gov/nass/>. Select "Today's Reports" or Publications and then Reports by Calendar or Publications and then Search, by Title or Subject.

### E-MAIL SUBSCRIPTION

There are two options for subscribing via e-mail. All NASS reports are available by subscription free of charge direct to your e-mail address. 1) Starting with the NASS Home Page at <http://www.usda.gov/nass/>, click on **Publications**, then click on the **Subscribe by E-mail** button which takes you to the page describing e-mail delivery of reports. Finally, click on **Go to the Subscription Page** and follow the instructions. 2) If you do NOT have Internet access, send an e-mail message to: [usda-reports@usda.mannlib.cornell.edu](mailto:usda-reports@usda.mannlib.cornell.edu). In the body of the message type the word: **list**.

### AUTOFAX ACCESS

NASSFax service is available for some reports from your fax machine. Please call 202-720-2000, using the handset attached to your fax. Respond to the voice prompts. Document 0411 is a list of available reports.

-----  
**PRINTED REPORTS OR DATA PRODUCTS**

**CALL OUR TOLL-FREE ORDER DESK: 800-999-6779 (U.S. and Canada)**  
Other areas, please call 703-834-0125      FAX: 703-834-0110  
(Visa, MasterCard, check, or money order acceptable for payment.)  
-----

### ASSISTANCE

For **assistance** with general agricultural statistics or further information about NASS or its products or services, contact the **Agricultural Statistics Hotline** at **800-727-9540**, 7:30 a.m. to 4:00 p.m. ET, or e-mail: [nass@nass.usda.gov](mailto:nass@nass.usda.gov).