

---

Released November 20, 2000, by the National Agricultural Statistics Service (NASS), Agricultural Statistics Board, U.S. Department of Agriculture. For information on "Cold Storage" call Linda Simpson at (202) 720-8784, office hours 7:00 a.m. to 4:30 p.m. ET.

## HIGHLIGHTS

**Frozen food stocks** in refrigerated warehouses on October 31, 2000, were greater than year earlier levels for red meat and potatoes. Cooler stocks of pecans and apples were also higher than a year earlier.

Butter stocks were 32 percent below September 2000 and 10 percent below a year ago.

**Total red meat supplies** in freezers were 2 percent above September 2000 and 12 percent above October 1999. Frozen pork stocks were 3 percent above both last month and last year. Stocks of pork bellies increased 8 percent from last month and were 3 percent above October 1999 stocks.

**Total frozen poultry supplies** were down 8 percent from last month and 6 percent below last year's level. Total stocks of chicken were 7 percent below both last month and last year. Total pounds of turkey in freezers decreased 9 percent from last month and were 3 percent below last year.

**Public cooler occupancy** was at 41 percent of capacity, down 8 points from last year. Public freezer occupancy, at 64 percent, was down 1 percentage point from last year.

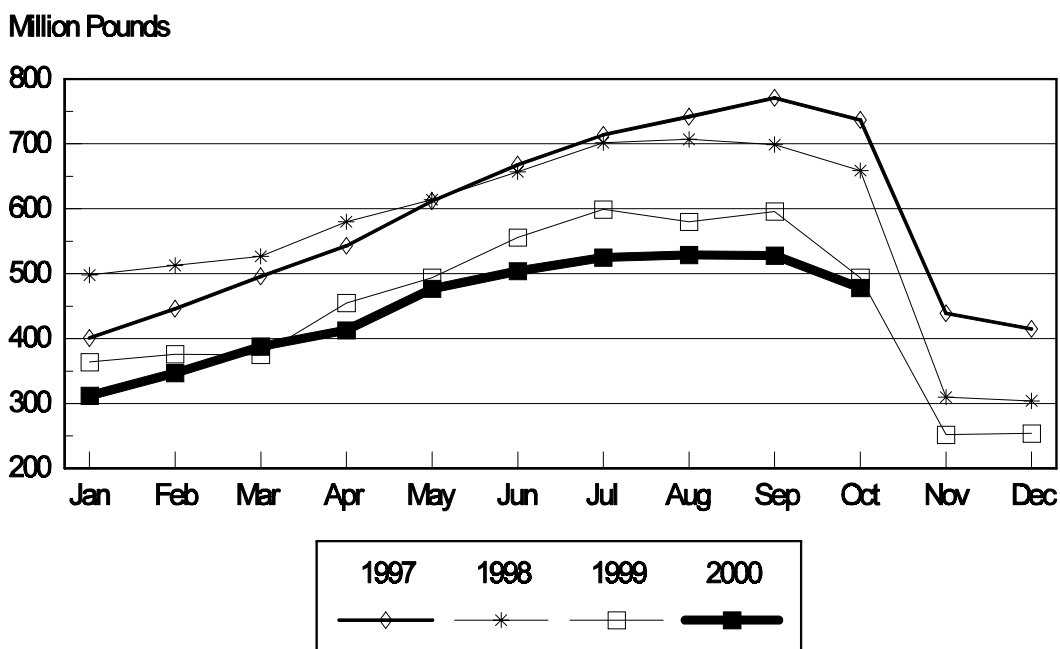
## Special Note

Included in this issue is a table showing total apple stocks for the years 1970 through 2000 for the major states.

## Table of Contents

	Page
Stocks in Cold Storage: By Commodity, United States, October 2000 .....	3
Stocks in Cold Storage: By Commodity, Region, and United States, September 30, 2000 .....	6
Stocks in Cold Storage: By Commodity, Region, and United States, October 31, 2000 .....	10
Public General Warehouses: Cold Storage Space Occupied by Region and United States, October 2000 .....	14
Apples in Cold Storage: By State and United States, October 31, 1999 and 2000 .....	15
Total Apple Stocks: October 31, 1970, 1975, 1980, 1985, 1990 and 2000 .....	16
Survey and Estimating Procedures, Revision Policy and Reliability .....	17

### Total Frozen Turkeys Cold Storage Stocks, 1997-2000 United States



**Stocks in Cold Storage: By Commodity,  
United States, October 2000**

Commodity	Stocks in All Warehouses			Percent of		Public Warehouse Stocks
	Oct 31, 1999	Sep 30, 2000	Oct 31, 2000	Oct 1999	Sep 2000	Oct 31, 2000
	<i>1,000 Pounds</i>	<i>1,000 Pounds</i>	<i>1,000 Pounds</i>	<i>Percent</i>	<i>Percent</i>	<i>1,000 Lbs</i>
Fresh Fruit						
Apples						
Regular Storage	2,061,583	1,150,015	2,023,897	98	176	
Controlled Atmosphere	4,103,669	2,149,426	4,225,306	103	197	
Total	6,165,252	3,299,441	6,249,203	101	189	72,056
Pears						
Bartlett	114,604	136,098	65,214	57	48	
Other Varieties	400,350	395,843	471,197	118	119	
Total	514,954	531,941	536,411	104	101	713
Nuts						
Shelled						
Peanuts	429,902	287,544	295,531	69	103	
Pecans	12,322	32,231	26,804	218	83	
Other Shelled	115,290	136,689	142,992	124	105	
Total	557,514	456,464	465,327	83	102	238,223
In-Shell						
Peanuts	21,561	11,126	11,314	52	102	
Pecans	9,588	111,202	100,032	90	90	
Other In-Shell	9,638	18,429	25,514	265	138	
Total	40,787	140,757	136,860	336	97	64,269
Dairy Products						
Butter, Total	64,226	84,850	57,614	90	68	45,351
(Government Owned)	391	375	330	84	88	
Natural Cheese						
American, Total	459,404	562,713	520,953	113	93	
(Government Owned)	67	607	505	754	83	
Swiss	9,372	7,929	8,325	89	105	
Other Natural Cheese	153,233	173,913	149,335	97	86	
Total	622,009	744,555	678,613	109	91	431,818
Eggs, Frozen						
Whites	471	448	390	83	87	
Yolks	665	612	701	105	115	
Whole & Mixed	6,781	9,591	11,096	164	116	
Unclassified	1,053	3,761	4,364	414	116	
Total	8,970	14,412	16,551	185	115	16,225
Frozen Poultry						
Chicken						
Broilers (Whole)	39,080	30,749	32,162	82	105	
Hens	9,401	8,704	8,649	92	99	
Other Chicken	772,018	778,200	720,612	93	93	
Total	820,499	817,653	761,423	93	93	
Turkey						
Whole Turkey	317,885	335,763	305,368	96	91	
Other Turkey	176,611	192,020	172,652	98	90	
Total	494,496	527,783	478,020	97	91	
Ducks	5,339	5,733	4,557	85	79	
Total	1,320,334	1,351,169	1,244,000	94	92	1,153,006

**Stocks in Cold Storage: By Commodity,  
United States, October 2000 (Continued)**

Commodity	Stocks in All Warehouses			Percent of		Public Warehouse Stocks
	Oct 31, 1999	Sep 30, 2000	Oct 31, 2000	Oct 1999	Sep 2000	Oct 31, 2000
	<i>1,000 Pounds</i>	<i>1,000 Pounds</i>	<i>1,000 Pounds</i>	<i>Percent</i>	<i>Percent</i>	<i>1,000 Lbs</i>
<b>Frozen Fruit</b>						
Apples	70,644	53,823	56,490	80	105	
Apricots	11,066	12,167	11,362	103	93	
Blackberries, Total	27,806	30,692	27,200	98	89	
IQF	18,018	19,696	18,081	100	92	
Pails and Tubs	1,991	2,202	2,163	109	98	
Barrels, 400 lbs net	6,078	6,476	4,517	74	70	
Concentrate	1,719	2,318	2,439	142	105	
Blueberries	81,845	110,306	98,886	121	90	
Boysenberries	5,808	5,874	5,407	93	92	
Cherries, Tart (RSP)	136,220	141,499	133,230	98	94	
Cherries, Tart (Juice)	2,336	2,087	2,233	96	107	
Cherries, Sweet	13,988	14,636	14,099	101	96	
Grapes	5,512	6,155	6,677	121	108	
Peaches	83,674	95,158	84,837	101	89	
Raspberries, Black	1,817	3,106	2,658	146	86	
Raspberries, Red, Total	65,628	69,524	62,763	96	90	
IQF	18,007	19,313	17,975	100	93	
Pails and Tubs	15,994	18,763	17,896	112	95	
Barrels, 400 lbs net	28,721	29,702	25,117	87	85	
Concentrate	2,906	1,746	1,775	61	102	
Strawberries, Total	319,436	442,727	384,608	120	87	
Other Frozen Fruit	805,303	246,249	720,304	89	293	
Total	1,631,083	1,234,003	1,610,754	99	131	979,082
<b>Frozen Juice</b>						
Orange Juice Conc. <sup>1</sup>	1,181,958	1,346,609	1,191,576	101	88	
(Gallon Equivalent)	119,438	136,076	120,410			
Other Juice Concentrate	343,138	294,199	317,765	93	108	
Total	1,525,096	1,640,808	1,509,341	99	92	216,869
<b>Frozen Vegetables</b>						
Asparagus	15,083	14,561	13,438	89	92	
Limas, Fordhook	14,935	17,672	17,855	120	101	
Limas, Baby	71,374	36,316	39,629	56	109	
Green Beans, Reg. Cut	196,364	186,535	182,641	93	98	
Green Beans, Fr. Style	41,629	48,225	40,507	97	84	
Broccoli, Spears	38,622	35,419	35,802	93	101	
Broccoli, Chopped & Cut	130,965	89,827	84,727	65	94	
Brussels Sprouts	13,118	12,915	15,004	114	116	
Carrots, Diced	63,267	25,809	53,832	85	209	
Carrots, Other	209,379	136,053	181,605	87	133	
Cauliflower	45,986	34,672	46,335	101	134	
Corn, Cut	424,832	392,810	412,239	97	105	
Corn, Cob	294,642	281,854	297,393	101	106	
Mixed Vegetables	51,834	47,843	52,010	100	109	
Okra	54,499	62,114	59,868	110	96	
Onion Rings	18,482	13,568	15,151	82	112	
Onions, Other	35,573	34,380	37,213	105	108	
Blackeye Peas	6,769	3,065	4,926	73	161	
Green Peas	344,805	407,895	361,308	105	89	
Peas & Carrots Mixed	10,024	7,103	8,895	89	125	
Spinach	84,424	72,758	63,315	75	87	
Squash, Summer/Zucchini	63,861	48,097	47,889	75	100	
Southern Greens	21,967	30,203	33,726	154	112	
Other Vegetables	325,418	350,503	350,686	108	100	
Total	2,577,852	2,390,197	2,455,994	95	103	1,734,535

See footnotes at end of table.

--continued

**Stocks in Cold Storage: By Commodity,  
United States, October 2000 (Continued)**

Commodity	Stocks in All Warehouses			Percent of		Public Warehouse Stocks
	Oct 31, 1999	Sep 30, 2000	Oct 31, 2000	Oct 1999	Sep 2000	Oct 31, 2000
	<i>1,000 Pounds</i>	<i>1,000 Pounds</i>	<i>1,000 Pounds</i>	<i>Percent</i>	<i>Percent</i>	<i>1,000 Lbs</i>
Potatoes						
French Fries	1,073,381	1,040,837	1,106,573	103	106	
Other Frozen	234,450	250,609	247,689	106	99	
Total	1,307,831	1,291,446	1,354,262	104	105	987,066
Meat						
Frozen Beef						
Boneless <sup>2</sup>	276,407	324,016	331,689	120	102	
Beef Cuts <sup>3</sup>	46,067	60,777	62,374	135	103	
Total	322,474	384,793	394,063	122	102	372,959
(Government Owned)	4,283	1,200	1,609	38	134	
Frozen Pork						
Picnics, Bone-in	10,051	6,032	7,199	72	119	
Hams, Total	118,246	147,369	141,661	120	96	131,479
Bone-in	72,246	83,130	71,828	99	86	67,614
Boneless <sup>4</sup>	46,000	64,239	69,833	152	109	63,865
Bellies	22,489	21,341	23,134	103	108	
Loins, Total	16,280	18,518	20,839	128	113	18,417
Bone-in	8,276	7,032	8,678	105	123	
Boneless <sup>5</sup>	8,004	11,486	12,161	152	106	
Ribs <sup>6</sup>	46,560	32,742	42,526	91	130	
Butts	10,549	8,147	11,745	111	144	
Trimmings <sup>7</sup>	52,497	43,485	51,388	98	118	
Other <sup>8</sup>	91,020	76,388	77,083	85	101	
Variety Meats <sup>9</sup>	56,383	67,404	52,506	93	78	
Unclassified <sup>10</sup>	13,985	18,002	23,005	164	128	
Total	438,060	439,428	451,086	103	103	398,638
(Government Owned)	6,960	3,470	3,829	55	110	
Other						
Veal	4,325	4,596	4,767	110	104	
Lamb & Mutton	9,210	12,867	12,203	132	95	
Total	13,535	17,463	16,970	125	97	16,725
Canned						
Canned Hams	5,623	7,178	6,828	121	95	
Other Canned Meat	584	1,090	1,363	233	125	
Total	6,207	8,268	8,191	132	99	5,181
Total	780,276	849,952	870,310	112	102	793,503
Miscellaneous						
Cooler	1,146,001	957,292	1,009,432	88	105	577,954
Freezer	2,008,552	2,251,912	2,247,032	112	100	2,163,167
Total	3,154,553	3,209,204	3,256,464	103	101	2,741,121
Commodities						
Stored in Coolers	9,052,724	6,138,718	9,084,037	100	148	1,390,214
Stored in Freezers	11,218,013	11,100,481	11,357,667	101	102	8,083,623
Total	20,270,737	17,239,199	20,441,704	101	119	9,473,837

<sup>1</sup> Adjusted to 42.0 degrees Brix equivalent (9.896 pounds per gallon).

<sup>2</sup> Includes all boxed boneless beef, such as ground beef, roasts, steaks, loins, strips, rounds, trimmings, etc. Variety meats (edible offal), such as tongues, livers, hearts, kidneys, and other organs removed from slaughtered beef, are included as miscellaneous freezer stocks.

<sup>3</sup> Includes all boxed primal beef cuts, bone-in.

<sup>4</sup> Includes full ham, bone removed and individual muscles separated.

<sup>5</sup> Includes pork tenderloins.

<sup>6</sup> Includes spareribs and backribs.

<sup>7</sup> Includes 42% regular trimmings, 72% special trimmings, boneless picnic meat, jowls, neckbone trimmings, blade, cheek, head, and shank meat, etc. Packaged bacon, sausage, and processed items, such as hot dogs and luncheon meats, are included in miscellaneous cooler or freezer stocks.

<sup>8</sup> Includes ears, tails, feet, neckbones and snouts.

<sup>9</sup> Includes tongues, kidneys, livers, stomachs, hearts, chitterlings, salivary glands, and other organs removed from slaughtered hogs.

<sup>10</sup> Includes pork unable to be classified elsewhere in this report.

**Stocks in Cold Storage: By Commodity, Region,  
and United States, September 30, 2000**

Commodity	New England	Middle Atlantic	East North Central	West North Central	South Atlantic
	<i>1,000 Pounds</i>	<i>1,000 Pounds</i>	<i>1,000 Pounds</i>	<i>1,000 Pounds</i>	<i>1,000 Pounds</i>
Total Fresh Apples	11	347,851	30,647		26,662
Nuts					
Shelled					
Peanuts	5	39	157	21	195,079
Pecans <sup>1</sup>		141			9,037
In-Shell					
Pecans <sup>1</sup>		24			12,587
Dairy Products					
Natural Cheese					
American, Total	20,875	53,362	284,493	111,210	5,342
Other Natural Cheese	900	9,439	80,249	72,407	679
Frozen Poultry					
Broilers (Whole)	88	1,098	610	366	9,200
Hens	234	76	619	1,111	1,819
Other Chicken	1,815	27,975	17,546	29,992	230,118
Total	2,137	29,149	18,775	31,469	241,137
Whole Turkeys	11,297	35,160	32,623	56,276	42,765
Other Turkey	359	16,416	13,746	58,566	50,068
Total	11,656	51,576	46,369	114,842	92,833
Ducks		386	4,326	129	35
Total	13,793	81,111	69,470	146,440	334,005
Frozen Fruit					
Apples	11	11,993	27,082	101	163
Blueberries	20,693	9,059	49,037	240	5,255
Cherries, Tart (RSP)	45	11,497	115,570	74	28
Cherries, Sweet		534	10,409	109	9
Peaches	28	2,443	7,592	74	367
Raspberries, Red	207	1,119	1,105	108	127
Strawberries, Total	81	3,307	4,353	2,005	934
Other Frozen Fruit	9,096	17,209	163,177	749	1,362

See footnotes at end of table.

--continued

**Stocks in Cold Storage: By Commodity, Region,  
and United States, September 30, 2000 (continued)**

Commodity	East South Central	West South Central	Mountain	Pacific	US Total
	<i>1,000 Pounds</i>	<i>1,000 Pounds</i>	<i>1,000 Pounds</i>	<i>1,000 Pounds</i>	<i>1,000 Pounds</i>
Total Fresh Apples		3	19	2,894,248	3,299,441
Nuts					
Shelled					
Peanuts	28,045	63,586	134	478	287,544
Pecans <sup>1</sup>	545	22,340		168	32,231
In-Shell					
Pecans <sup>1</sup>	1,221	97,370			111,202
Dairy Products					
Natural Cheese					
American, Total		492	8,782	78,157	562,713
Other Natural Cheese	170	598	1,265	8,206	173,913
Frozen Poultry					
Broilers (Whole)	3,686	14,157	517	1,027	30,749
Hens	1,707	2,719	90	329	8,704
Other Chicken	161,228	265,907	2,921	40,698	778,200
Total	166,621	282,783	3,528	42,054	817,653
Whole Turkeys	11,979	58,408	16,536	70,719	335,763
Other Turkey	3,303	23,720	6,715	19,127	192,020
Total	15,282	82,128	23,251	89,846	527,783
Ducks	78	628	1	150	5,733
Total	181,981	365,539	26,780	132,050	1,351,169
Frozen Fruit					
Apples	133	2,604	67	11,669	53,823
Blueberries	58	562	190	25,212	110,306
Cherries, Tart (RSP)	29	326	2,499	11,431	141,499
Cherries, Sweet	18	259	334	2,964	14,636
Peaches	72	2,151	75	82,356	95,158
Raspberries, Red	117	731	8	66,002	69,524
Strawberries, Total	4,782	40,290	360	386,615	442,727
Other Frozen Fruit	366	7,660	602	46,028	246,249

See footnotes at end of table.

--continued

**Stocks in Cold Storage: By Commodity, Region,  
and United States, September 30, 2000 (continued)**

Commodity	New England	Middle Atlantic	East North Central	West North Central	South Atlantic
	<i>1,000 Pounds</i>	<i>1,000 Pounds</i>	<i>1,000 Pounds</i>	<i>1,000 Pounds</i>	<i>1,000 Pounds</i>
Frozen Juice					
Orange Juice Conc. <sup>2</sup>	9		1,018	66	1,280,173
Other Juice Concentrate	349	8,315	6,936	1,955	131,895
Frozen Vegetables <sup>3</sup>					
Asparagus		482	7,442	23	340
Limas, Fordhook		1,449	838	71	2,055
Limas, Baby		4,824	2,480	958	8,196
Green Beans, Reg. Cut		34,423	49,344	2,110	6,424
Green Beans, Fr. Style		9,911	16,891	719	688
Broccoli, Spears		4,796	2,539	296	2,025
Broccoli, Chopped & Cut		7,495	7,900	3,777	5,910
Brussels Sprouts		1,646	1,233	271	446
Carrots, Diced		1,859	7,830	388	1,415
Carrots, Other		10,818	11,385	1,047	4,019
Cauliflower		2,202	3,446	1,405	1,013
Corn, Cut		38,471	55,962	18,607	6,124
Corn, Cob		26,384	18,844	26,943	5,430
Mixed Vegetables		3,838	7,924	1,394	3,343
Okra		2,379	929	6,026	9,441
Onion Rings		680	7,978	2,289	802
Onions, Other		4,361	4,281	401	2,796
Blackeye Peas		605	107	71	1,164
Green Peas		61,654	37,462	10,645	14,098
Peas & Carrots Mixed		1,077	617	33	703
Spinach		14,285	3,315	1,087	4,772
Squash, Summer/Zucchini		3,604	12,537	714	7,060
Southern Greens		2,934	522	976	13,238
Other Vegetables		47,546	32,113	13,932	30,373
Potatoes					
French Fries	29,480	43,130	60,751	107,792	24,877
Other Frozen	4,105	7,403	37,615	10,145	2,768
Meat					
Frozen Beef					
Boneless	2,932	39,453	29,383	83,726	26,683
Beef Cuts	2,974	3,983	5,052	9,294	3,309
Frozen Pork					
Ribs	211	560	9,350	13,920	3,827
Trimnings	161	1,635	13,417	19,338	6,583
Other	1,933	2,239	13,493	33,024	8,806
Other					
Veal	105	554	1,497	303	51
Lamb & Mutton	351	3,997	1,152	2,503	408

See footnotes at end of table.

--continued



**Stocks in Cold Storage: By Commodity, Region,  
and United States, September 30, 2000 (continued)**

Commodity	East South Central	West South Central	Mountain	Pacific	US Total
	<i>1,000 Pounds</i>	<i>1,000 Pounds</i>	<i>1,000 Pounds</i>	<i>1,000 Pounds</i>	<i>1,000 Pounds</i>
Frozen Juice					
Orange Juice Concentrate	83	4,424	1,491	59,345	1,346,609
Other Juice Concentrate	889	19,537	738	123,585	294,199
Frozen Vegetables <sup>3</sup>					
Asparagus		509	110	5,655	14,561
Limas, Fordhook		390	23	12,846	17,672
Limas, Baby		524	2,419	16,915	36,316
Green Beans, Reg. Cut		2,040	220	91,974	186,535
Green Beans, Fr. Style		236	61	19,719	48,225
Broccoli, Spears		14,991	8	10,764	35,419
Broccoli, Chopped & Cut		19,749	1,206	43,790	89,827
Brussels Sprouts		698	42	8,579	12,915
Carrots, Diced		1,628	491	12,198	25,809
Carrots, Other		13,529	292	94,963	136,053
Cauliflower		10,214	95	16,297	34,672
Corn, Cut		2,021	5,689	265,936	392,810
Corn, Cob		2,484	11,305	190,464	281,854
Mixed Vegetables		6,403	73	24,868	47,843
Okra		42,592		747	62,114
Onion Rings		842	661	316	13,568
Onions, Other		2,233	5,740	14,568	34,380
Blackeye Peas		986		132	3,065
Green Peas		2,069	20,080	261,887	407,895
Peas & Carrots Mixed		487		4,186	7,103
Spinach		8,798	6,881	33,620	72,758
Squash, Summer/Zucchini		4,440	1,091	18,651	48,097
Southern Greens		11,781		752	30,203
Other Vegetables		45,272	3,783	177,484	350,503
Potatoes					
French Fries	1,225	10,571	301,573	461,438	1,040,837
Other Frozen	917	7,478	51,716	128,462	250,609
Meat					
Frozen Beef					
Boneless <sup>4</sup>	7,819	64,080	3,790	66,150	324,016
Beef Cuts <sup>5</sup>	2,904	13,959	7,997	11,305	60,777
Frozen Pork					
Ribs <sup>6</sup>	1,360	1,736	16	1,762	32,742
Trimmings <sup>7</sup>	197	1,769	52	333	43,485
Other <sup>8</sup>	9,627	2,752	176	4,338	76,388
Other					
Veal		25		2,061	4,596
Lamb & Mutton		278	667	3,511	12,867

<sup>1</sup> East North Central combined with South Atlantic. Mountain and West North Central combined with West South Central.

<sup>2</sup> Middle Atlantic combined with South Atlantic.

<sup>3</sup> New England combined with Middle Atlantic. East South Central combined with South Atlantic.

<sup>4</sup> Includes all boxed boneless beef, such as ground beef, roasts, steaks, loins, strips, rounds, trimmings, etc. Variety meats (edible offal), such as tongues, livers, hearts, kidneys, and other organs removed from slaughtered beef, are included as miscellaneous freezer stocks.

<sup>5</sup> Includes all boxed primal beef cuts, bone-in.

<sup>6</sup> Includes spareribs and backribs.

<sup>7</sup> Includes 42% regular trimmings, 72% special trimmings, boneless picnic meat, jowls, neckbone trimmings, blade, cheek, head, and shank meat, etc. Packaged bacon, sausage, and processed items, such as hot dogs and luncheon meats, are included in miscellaneous cooler or freezer stocks.

<sup>8</sup> Includes ears, tails, feet, neckbones and snouts.

**Stocks in Cold Storage: By Commodity, Region,  
and United States, October 31, 2000**

Commodity	New England	Middle Atlantic	East North Central	West North Central	South Atlantic
	<i>1,000 Pounds</i>	<i>1,000 Pounds</i>	<i>1,000 Pounds</i>	<i>1,000 Pounds</i>	<i>1,000 Pounds</i>
Total Fresh Apples	68,076	607,024	454,936	4,768	386,720
Nuts					
Shelled					
Peanuts		12	161	38	194,989
Pecans <sup>1</sup>		132			9,171
In-Shell					
Pecans <sup>1</sup>					12,592
Dairy Products					
Natural Cheese					
American, Total	19,251	49,982	262,546	99,910	8,365
Other Natural Cheese	388	7,227	68,972	59,763	611
Frozen Poultry					
Broilers (Whole)	97	1,074	725	374	9,820
Hens	143	141	432	1,303	1,839
Other Chicken	1,922	26,198	17,131	25,838	189,123
Total	2,162	27,413	18,288	27,515	200,782
Whole Turkeys	9,932	33,342	38,291	52,870	35,555
Other Turkey	258	14,541	14,777	50,430	45,758
Total	10,190	47,883	53,068	103,300	81,313
Ducks		394	3,131	109	31
Total	12,352	75,690	74,487	130,924	282,126
Frozen Fruit					
Apples	28	13,126	27,348	127	236
Blueberries	19,314	8,651	43,938	295	4,374
Cherries, Tart (RSP)	41	10,656	110,097	100	28
Cherries, Sweet		518	9,832	75	13
Peaches	27	2,406	6,413	211	351
Raspberries, Red	196	1,051	975	108	51
Strawberries, Total	70	3,083	4,867	2,152	903
Other Frozen Fruit	80,263	58,412	399,646	754	1,325

See footnotes at end of table.

--continued

**Stocks in Cold Storage: By Commodity, Region,  
and United States, October 31, 2000 (continued)**

Commodity	East South Central	West South Central	Mountain	Pacific	US Total
	<i>1,000 Pounds</i>	<i>1,000 Pounds</i>	<i>1,000 Pounds</i>	<i>1,000 Pounds</i>	<i>1,000 Pounds</i>
Total Fresh Apples	59	4,728	126,489	4,596,403	6,249,203
Nuts					
Shelled					
Peanuts	28,972	70,727	141	491	295,531
Pecans <sup>1</sup>	419	16,959		123	26,804
In-Shell					
Pecans <sup>1</sup>	740	86,699		1	100,032
Dairy Products					
Natural Cheese					
American, Total		375	10,540	69,984	520,953
Other Natural Cheese	152	735	849	10,638	149,335
Frozen Poultry					
Broilers (Whole)	3,725	14,873	530	944	32,162
Hens	1,746	2,613	148	284	8,649
Other Chicken	147,250	270,169	2,738	40,243	720,612
Total	152,721	287,655	3,416	41,471	761,423
Whole Turkeys	10,172	47,646	15,775	61,785	305,368
Other Turkey	2,944	20,981	6,822	16,141	172,652
Total	13,116	68,627	22,597	77,926	478,020
Ducks	35	803	1	53	4,557
Total	165,872	357,085	26,014	119,450	1,244,000
Frozen Fruit					
Apples	81	2,427	75	13,042	56,490
Blueberries	69	467	81	21,697	98,886
Cherries, Tart (RSP)	13	100	2,368	9,827	133,230
Cherries, Sweet	23	255	535	2,848	14,099
Peaches	86	1,676	98	73,569	84,837
Raspberries, Red	104	595	9	59,674	62,763
Strawberries, Total	4,339	36,872	392	331,930	384,608
Other Frozen Fruit	395	8,827	585	170,097	720,304

See footnotes at end of table.

--continued

**Stocks in Cold Storage: By Commodity, Region,  
and United States, October 31, 2000 (continued)**

Commodity	New England	Middle Atlantic	East North Central	West North Central	South Atlantic
	<i>1,000 Pounds</i>	<i>1,000 Pounds</i>	<i>1,000 Pounds</i>	<i>1,000 Pounds</i>	<i>1,000 Pounds</i>
Frozen Juice					
Orange Juice Conc. <sup>2</sup>	12		900	159	1,132,884
Other Juice Concentrate	362	13,423	8,832	2,435	129,576
Frozen Vegetables <sup>3</sup>					
Asparagus		423	6,596	81	371
Limas, Fordhook		1,114	1,067	85	2,895
Limas, Baby		4,848	3,808	869	11,493
Green Beans, Reg. Cut		38,133	49,607	1,875	6,912
Green Beans, Fr. Style		12,234	11,426	681	1,080
Broccoli, Spears		9,056	1,928	307	2,016
Broccoli, Chopped & Cut		6,925	7,337	3,519	6,787
Brussels Sprouts		1,604	1,369	303	434
Carrots, Diced		5,156	15,143	365	3,113
Carrots, Other		12,985	15,046	922	4,089
Cauliflower		2,807	4,015	1,333	1,379
Corn, Cut		40,954	55,288	18,444	6,680
Corn, Cob		28,541	23,556	24,493	4,857
Mixed Vegetables		8,806	6,849	1,421	3,035
Okra		2,196	822	5,524	9,225
Onion Rings		672	9,219	2,400	885
Onions, Other		3,747	4,762	401	2,013
Blackeye Peas		173	104	83	3,293
Green Peas		48,183	30,350	8,663	12,132
Peas & Carrots Mixed		1,275	871	42	717
Spinach		12,891	2,797	762	4,859
Squash, Summer/Zucchini		3,986	12,821	648	6,017
Southern Greens		3,770	497	1,223	12,032
Other Vegetables		41,906	33,770	14,406	25,260
Potatoes					
French Fries	31,140	44,830	65,740	113,439	27,786
Other Frozen	3,787	7,162	40,721	10,058	2,738
Meat					
Frozen Beef					
Boneless <sup>4</sup>	3,134	31,795	27,694	104,601	22,089
Beef Cuts <sup>5</sup>	2,669	4,188	5,495	8,967	3,089
Frozen Pork					
Ribs <sup>6</sup>	273	768	11,863	18,674	5,328
Trimmings <sup>7</sup>	134	5,675	15,272	20,793	7,073
Other <sup>8</sup>	1,928	2,160	13,290	32,176	8,455
Other					
Veal	110	702	1,404	241	54
Lamb & Mutton	334	3,541	663	2,618	432

See footnotes at end of table.

--continued

**Stocks in Cold Storage: By Commodity, Region,  
and United States, October 31, 2000 (continued)**

Commodity	East South Central	West South Central	Mountain	Pacific	US Total
	<i>1,000 Pounds</i>	<i>1,000 Pounds</i>	<i>1,000 Pounds</i>	<i>1,000 Pounds</i>	<i>1,000 Pounds</i>
Frozen Juice					
Orange Juice Concentrate	60	3,990	1,295	52,276	1,191,576
Other Juice Concentrate	846	20,064	679	141,548	317,765
Frozen Vegetables <sup>3</sup>					
Asparagus		445	114	5,408	13,438
Limas, Fordhook		399	23	12,272	17,855
Limas, Baby		583	2,429	15,599	39,629
Green Beans, Reg. Cut		1,708	200	84,206	182,641
Green Beans, Fr. Style		196	59	14,831	40,507
Broccoli, Spears		12,532	79	9,884	35,802
Broccoli, Chopped & Cut		18,176	1,014	40,969	84,727
Brussels Sprouts		784	42	10,468	15,004
Carrots, Diced		1,237	456	28,362	53,832
Carrots, Other		15,204	589	132,770	181,605
Cauliflower		13,101	128	23,572	46,335
Corn, Cut		2,175	4,876	283,822	412,239
Corn, Cob		2,693	12,165	201,088	297,393
Mixed Vegetables		6,665	86	25,148	52,010
Okra		41,428		673	59,868
Onion Rings		948	774	253	15,151
Onions, Other		2,187	5,895	18,208	37,213
Blackeye Peas		1,109		164	4,926
Green Peas		2,119	19,509	240,352	361,308
Peas & Carrots Mixed		518		5,472	8,895
Spinach		7,234	5,471	29,301	63,315
Squash, Summer/Zucchini		4,042	857	19,518	47,889
Southern Greens		15,154		1,050	33,726
Other Vegetables		42,003	3,865	189,476	350,686
Potatoes					
French Fries	1,161	10,495	318,205	493,777	1,106,573
Other Frozen	532	6,136	55,914	120,641	247,689
Meat					
Frozen Beef					
Boneless <sup>4</sup>	7,699	69,753	5,011	59,913	331,689
Beef Cuts <sup>5</sup>	3,078	14,797	8,870	11,221	62,374
Frozen Pork					
Ribs <sup>6</sup>	1,709	1,647	2	2,262	42,526
Trimmings <sup>7</sup>	203	1,748	61	429	51,388
Other <sup>8</sup>	10,421	3,146	181	5,326	77,083
Other					
Veal		225		2,031	4,767
Lamb & Mutton		358	603	3,654	12,203

<sup>1</sup> East North Central combined with South Atlantic. Mountain and West North Central Combined with West South Central.

<sup>2</sup> Middle Atlantic combined with South Atlantic.

<sup>3</sup> New England combined with Middle Atlantic. East South Central combined with South Atlantic.

<sup>4</sup> Includes all boxed boneless beef, such as ground beef, roasts, steaks, loins, strips, rounds, trimmings, etc. Variety meats (edible offal), such as tongues, livers, hearts, kidneys, and other organs removed from slaughtered beef, are included as miscellaneous freezer stocks.

<sup>5</sup> Includes all boxed primal beef cuts, bone-in.

<sup>6</sup> Includes spareribs and backribs.

<sup>7</sup> Includes 42% regular trimmings, 72% special trimmings, boneless picnic meat, jowls, neckbone trimmings, blade, cheek, head, and shank meat, etc. Packaged bacon, sausage, and processed items, such as hot dogs and luncheon meats, are included in miscellaneous cooler or freezer stocks.

<sup>8</sup> Includes ears, tails, feet, neckbones and snouts.

**Public General Warehouses: Cold Storage Space Occupied  
by Region and United States, October 2000**

Region	Cooler				Freezer			
	Usable Space	Usable Space Occupied			Usable Space	Usable Space Occupied		
		Oct 31 2000	Oct 31 1999	Sep 30 2000		Oct 31 2000	Oct 31 1999	Sep 30 2000
	<i>1,000 Cu Ft</i>	<i>Percent</i>	<i>Percent</i>	<i>Percent</i>	<i>1,000 Cu Ft</i>	<i>Percent</i>	<i>Percent</i>	<i>Percent</i>
New England	2,175	63	58	62	19,586	71	70	73
Middle Atlantic	36,034	74	47	44	97,498	82	69	74
E. North Central	55,827	49	44	40	198,166	60	51	57
W. North Central	44,787	36	46	42	148,528	50	60	58
South Atlantic	47,928	46	36	38	184,618	65	59	57
E. South Central	8,997	56	53	57	69,280	46	47	43
W. South Central	20,982	37	41	37	134,043	66	60	65
Mountain	7,925	71	56	55	53,825	67	61	61
Pacific	43,756	46	41	40	273,851	76	77	78
US	268,411	49	43	41	1,179,395	65	63	64

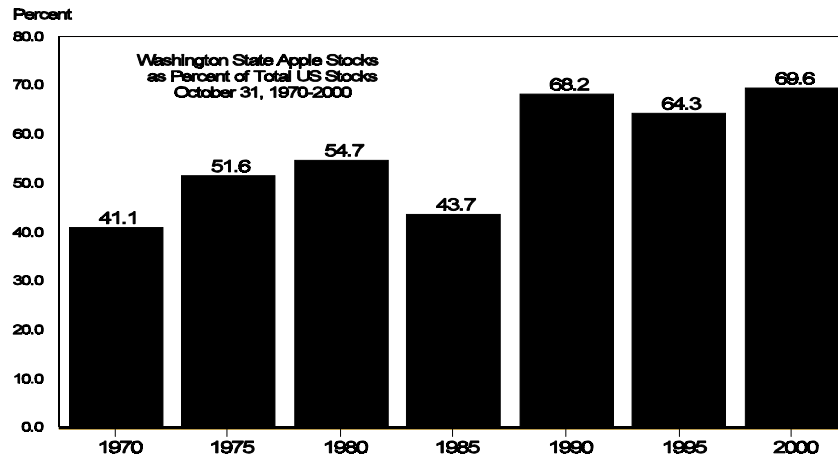
## Cold Storage Regions



**Apples in Cold Storage: By State  
and United States, October 2000**

State	All Warehouses	
	Oct 31, 1999	Oct 31, 2000
	<i>1,000 Pounds</i>	<i>1,000 Pounds</i>
CA	324,043	160,309
MI	525,756	416,923
N ENG	110,171	68,076
NY	380,268	321,342
OH	32,941	20,835
OR	98,755	86,092
PA	297,822	254,385
VA	281,734	242,093
WA	3,900,073	4,350,003
WV	54,933	69,823
Other States	158,756	259,322
US	6,165,252	6,249,203

Washington State has always lead the United States in apple production and apple stocks. Over the past three decades, October 31 stocks have risen from slightly less than half of the US total to almost two thirds. (Spring frosts during April and May 1985 reduced the output in that year.)



October 31 apple stocks in New York, Michigan and Pennsylvania have remained fairly steady since 1970.

**Apple (Regular and Controlled Atmosphere) Stocks in Cold Storage:  
United States, October 31, 1970, 1975, 1980, 1985, 1990, 1995 and 2000**

State	October 31						
	1970	1975	1980	1985	1990	1995	2000
	<i>1,000 Pounds</i>	<i>1,000 Pounds</i>	<i>1,000 Pounds</i>	<i>1,000 Pounds</i>	<i>1,000 Pounds</i>	<i>1,000 Pounds</i>	<i>1,000 Pounds</i>
Washington	1,127,206	1,783,246	2,390,188	1,602,158	3,486,800	3,462,352	4,350,003
New York	353,240	355,520	387,030	297,822	360,024	326,174	321,342
Michigan	348,876	320,670	284,353	435,708	330,330	487,000	416,923
Pennsylvania	200,134	226,374	319,997	359,595	287,548	287,742	254,385
Other States	716,255	767,909	984,966	972,993	646,459	822,686	906,550
United States	2,745,711	3,453,719	4,366,534	3,668,276	5,111,161	5,385,954	6,249,203



**Survey Procedures:** Questionnaires are mailed about the 24th of each month to all operators on the list of approximately 1,400 public and private cold storage warehouses. In addition, apple data are obtained from special surveys and other sources (State Departments of Agriculture, U.S. Apple Association, etc.). All survey data represent stocks as of the end of the month.

Data are collected from warehouses artificially cooled to a temperature of 50 degrees Fahrenheit or lower, and whose food products are normally stored for 30 days or more. All food items in these facilities are reported regardless of the number of days stored at the time of the report. Also included are specialized storage facilities meeting the 30 day requirement, such as fruit houses, dairy manufacturing plants, frozen fruit, fruit juice, and vegetable processors, and poultry and meat packing plants. Excluded are stocks in space maintained by wholesalers, jobbers, distributors, chain stores, locker plants containing individual lockers, meat packer branch houses, and frozen food processors whose entire inventories are turned over more than once a month.

**Estimating Procedures:** Data for reporting firms are added to estimates for non-reporting firms to obtain regional and National totals. Estimates for non-reporting firms are obtained by multiplying the previous month's figure by a percent change from the previous month. The percent change is calculated for each item from totals of the current and previous month summed from firms that reported both months.

**Revision Policy:** Data are revised the following month based on late reports or corrected data. Final figures are published in the annual summary in February of the following year.

**Reliability:** Reports are received from 900 firms each month which represent about 70 percent of the total capacity. Firms that are not on the list or firms who have never reported are not represented in the data. Monthly data can vary due to different firms reporting month to month. Survey data are also subject to non-sampling errors such as omissions and mistakes in reporting and in processing the data. While these errors cannot be measured directly, they are minimized by carefully reviewing all reported data for consistency and reasonableness.

The next "Cold Storage" report will be released at 3 p.m. on December 20, 2000.

The United States Department of Agriculture (USDA) prohibits discrimination in all its programs on the basis of race, color, national origin, gender, religion, age, disability, political beliefs, sexual orientation, and marital or family status. (Not all prohibited bases apply to all programs.) Persons with disabilities who require alternative means for communication of program information (braille, large print, audiotape, etc.) should contact the USDA's TARGET Center at 202-720-2600 (voice and TDD).

To file a complaint of discrimination, write USDA, Director, Office of Civil Rights, Room 326-W, Whitten Building, 14th and Independence Avenue, SW, Washington, D.C., 20250-9410, or call 202-720-5964 (voice or TDD). USDA is an equal opportunity provider and employer.

## ACCESS TO REPORTS!!

---

For your convenience, there are several ways to obtain NASS reports, data products, and services:

### INTERNET ACCESS

All NASS reports are available free of charge on the worldwide Internet. For access, connect to the Internet and go to the NASS Home Page at: <http://www.usda.gov/nass/>. Select "Today's Reports" or Publications and then Reports by Calendar or Publications and then Search, by Title or Subject.

### E-MAIL SUBSCRIPTION

There are two options for subscribing via e-mail. All NASS reports are available by subscription free of charge direct to your e-mail address. 1) Starting with the NASS Home Page at <http://www.usda.gov/nass/>, click on **Publications**, then click on the **Subscribe by E-mail** button which takes you to the page describing e-mail delivery of reports. Finally, click on **Go to the Subscription Page** and follow the instructions. 2) If you do NOT have Internet access, send an e-mail message to: [usda-reports@usda.mannlib.cornell.edu](mailto:usda-reports@usda.mannlib.cornell.edu). In the body of the message type the word: **list**.

### AUTOFAX ACCESS

NASSFax service is available for some reports from your fax machine. Please call 202-720-2000, using the handset attached to your fax. Respond to the voice prompts. Document 0411 is a list of available reports.

-----  
**PRINTED REPORTS OR DATA PRODUCTS**

**CALL OUR TOLL-FREE ORDER DESK: 800-999-6779 (U.S. and Canada)**  
Other areas, please call 703-834-0125      FAX: 703-834-0110  
(Visa, MasterCard, check, or money order acceptable for payment.)  
-----

### ASSISTANCE

For **assistance** with general agricultural statistics or further information about NASS or its products or services, contact the **Agricultural Statistics Hotline** at **800-727-9540**, 7:30 a.m. to 4:00 p.m. ET, or e-mail: [nass@nass.usda.gov](mailto:nass@nass.usda.gov).