



# Cold Storage

---

Released December 20, 2000, by the National Agricultural Statistics Service (NASS), Agricultural Statistics Board, U.S. Department of Agriculture. For information on "Cold Storage" call Linda Simpson at (202) 720-8784, office hours 7:00 a.m. to 4:30 p.m. ET.

## HIGHLIGHTS

**Frozen food stocks** in refrigerated warehouses on November 30, 2000, were greater than year earlier levels for red meat, orange juice, potatoes, and fruit. Cooler stocks of pecans and apples were also higher than a year earlier.

Butter stocks were 53 percent below October 2000 and 10 percent below a year ago.

**Total red meat supplies** in freezers were 1 percent above October 2000 and 16 percent above November 1999. Frozen pork stocks were 2 percent above last month and 7 percent above last year. Stocks of pork bellies increased 88 percent from last month and were 48 percent above November 1999 stocks.

**Total frozen poultry supplies** were down 18 percent from last month and 3 percent below last year's level. Total stocks of chicken were 1 percent below last month and 5 percent below last year. Total pounds of turkey in freezers decreased 45 percent from last month but were 3 percent above last year.

**Public cooler occupancy** was at 45 percent of capacity, down 1 point from last year. Public freezer occupancy, at 59 percent, was down 5 percentage points from last year.

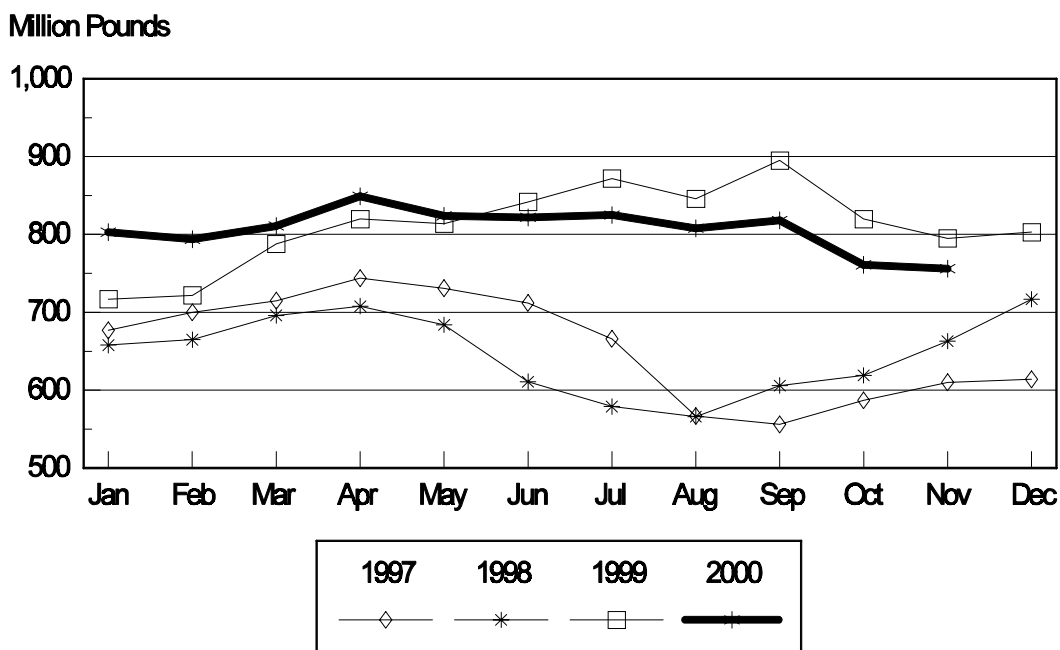
## Special Note

Included in this issue is a table showing total October 31, 2000 cold storage stocks of French Fries for the years 1960 through 2000.

## Table of Contents

	Page
Stocks in Cold Storage: By Commodity, United States, November 2000 .....	3
Stocks in Cold Storage: By Commodity, Region, and United States, October 31, 2000 .....	6
Stocks in Cold Storage: By Commodity, Region, and United States, November 30, 2000 .....	10
Public General Warehouses: Cold Storage Space Occupied by Region and United States, November 2000 .....	14
Apples in Cold Storage: By State and United States, November 30, 2000 .....	15
Total French Fries in Cold Storage: October 31, 1980, 1985, 1990 and 2000, by Region, and October 31, 1960 to 2000, United States .....	16
Survey and Estimating Procedures, Revision Policy and Reliability .....	17

### Total Frozen Chicken Cold Storage Stocks, 1997-2000 United States



**Stocks in Cold Storage: By Commodity,  
United States, November 2000**

Commodity	Stocks in All Warehouses			Percent of		Public Warehouse Stocks
	Nov 30, 1999	Oct 31, 2000	Nov 30, 2000	Nov 1999	Oct 2000	Nov 30, 2000
	<i>1,000 Pounds</i>	<i>1,000 Pounds</i>	<i>1,000 Pounds</i>	<i>Percent</i>	<i>Percent</i>	<i>1,000 Lbs</i>
Fresh Fruit						
Apples						
Regular Storage	1,509,008	1,962,547	1,404,821	93	72	
Controlled Atmosphere	4,014,881	4,385,306	4,236,693	106	97	
Total	5,523,889	6,347,853	5,641,514	102	89	9,735
Pears						
Bartlett	54,291	65,413	25,640	47	39	
Other Varieties	345,502	473,501	400,335	116	85	
Total	399,793	538,914	425,975	107	79	950
Nuts						
Shelled						
Peanuts	424,200	306,152	326,677	77	107	
Pecans	11,810	27,216	29,940	254	110	
Other Shelled	120,348	142,996	157,185	131	110	
Total	556,358	476,364	513,802	92	108	245,684
In-Shell						
Peanuts	21,770	12,899	18,168	83	141	
Pecans	36,259	105,915	114,184	315	108	
Other In-Shell	7,038	25,514	22,873	325	90	
Total	65,067	144,328	155,225	239	108	58,852
Dairy Products						
Butter, Total	30,184	57,959	27,063	90	47	21,867
(Government Owned)	313	330	196	63	59	
Natural Cheese						
American, Total	448,250	523,944	516,035	115	98	
(Government Owned)	24	711	706		99	
Swiss	9,075	8,827	10,882	120	123	
Other Natural Cheese	134,397	149,061	140,428	104	94	
Total	591,722	681,832	667,345	113	98	422,814
Eggs, Frozen						
Whites	494	377	436	88	116	
Yolks	762	701	696	91	99	
Whole & Mixed	6,716	11,068	10,141	151	92	
Unclassified	482	4,364	4,223	876	97	
Total	8,454	16,510	15,496	183	94	15,232
Frozen Poultry						
Chicken						
Broilers (Whole)	44,056	32,072	31,564	72	98	
Hens	8,117	8,649	8,062	99	93	
Other Chicken	743,066	719,920	716,578	96	100	
Total	795,239	760,641	756,204	95	99	
Turkey						
Whole Turkey	95,093	304,242	108,469	114	36	
Other Turkey	157,178	171,128	151,009	96	88	
Total	252,271	475,370	259,478	103	55	
Ducks	4,497	4,565	4,537	101	99	
Total	1,052,007	1,240,576	1,020,219	97	82	940,249

**Stocks in Cold Storage: By Commodity,  
United States, November 2000 (Continued)**

Commodity	Stocks in All Warehouses			Percent of		Public Warehouse Stocks
	Nov 30, 1999	Oct 31, 2000	Nov 30, 2000	Nov 1999	Oct 2000	Nov 30, 2000
	<i>1,000 Pounds</i>	<i>1,000 Pounds</i>	<i>1,000 Pounds</i>	<i>Percent</i>	<i>Percent</i>	<i>1,000 Lbs</i>
<b>Frozen Fruit</b>						
Apples	74,398	56,189	58,777	79	105	
Apricots	9,737	11,357	10,402	107	92	
Blackberries, Total	25,412	27,205	25,620	101	94	
IQF	16,207	18,116	16,927	104	93	
Pails and Tubs	1,844	2,148	2,055	111	96	
Barrels, 400 lbs net	5,611	4,502	4,279	76	95	
Concentrate	1,750	2,439	2,359	135	97	
Blueberries	69,999	99,315	93,611	134	94	
Boysenberries	5,528	5,407	4,752	86	88	
Cherries, Tart (RSP)	125,343	133,209	122,296	98	92	
Cherries, Tart (Juice)	2,249	2,233	2,010	89	90	
Cherries, Sweet	13,085	14,101	12,917	99	92	
Grapes	5,283	6,677	5,820	110	87	
Peaches	78,099	90,588	84,333	108	93	
Raspberries, Black	1,582	2,658	1,742	110	66	
Raspberries, Red, Total	60,312	62,734	58,143	96	93	
IQF	17,285	17,998	17,301	100	96	
Pails and Tubs	15,655	17,377	16,798	107	97	
Barrels, 400 lbs net	24,372	25,584	22,282	91	87	
Concentrate	3,000	1,775	1,762	59	99	
Strawberries, Total	314,323	381,461	350,331	111	92	
Pkgs. 20 Oz. & Less	164,418		147,139	89		
Pkgs. Over 20 Oz.	149,905		203,192	136		
Other Frozen Fruit	797,183	733,257	773,446	97	105	
Total	1,582,533	1,626,391	1,604,200	101	99	954,783
<b>Frozen Juice</b>						
Orange Juice Conc. <sup>1</sup>	1,102,698	1,169,353	1,196,664	109	102	
(Gallon Equivalent)	111,429	118,164	120,924			
Other Juice Concentrate	343,689	316,402	291,261	85	92	
Total	1,446,387	1,485,755	1,487,925	103	100	206,755
<b>Frozen Vegetables</b>						
Asparagus	13,962	13,387	13,258	95	99	
Limas, Fordhook	15,413	17,932	16,121	105	90	
Limas, Baby	64,507	39,507	35,030	54	89	
Green Beans, Reg. Cut	172,979	183,062	161,193	93	88	
Green Beans, Fr. Style	38,146	40,058	35,208	92	88	
Broccoli, Spears	36,182	35,435	33,010	91	93	
Broccoli, Chopped & Cut	124,436	84,900	80,038	64	94	
Brussels Sprouts	20,380	14,947	18,289	90	122	
Carrots, Diced	99,385	61,130	99,943	101	163	
Carrots, Other	226,603	180,474	198,383	88	110	
Cauliflower	56,505	46,652	52,655	93	113	
Corn, Cut	370,531	412,891	366,652	99	89	
Corn, Cob	286,753	297,296	273,055	95	92	
Mixed Vegetables	52,358	48,390	46,032	88	95	
Okra	50,480	59,455	54,776	109	92	
Onion Rings	18,619	15,148	14,237	76	94	
Onions, Other	41,677	37,408	40,079	96	107	
Blackeye Peas	6,851	4,765	4,631	68	97	
Green Peas	304,127	359,337	324,245	107	90	
Peas & Carrots Mixed	9,401	8,875	7,233	77	81	
Spinach	85,493	60,622	56,692	66	94	
Squash, Summer/Zucchini	60,301	47,795	44,011	73	92	
Southern Greens	30,401	34,315	34,843	115	102	
Other Vegetables	298,300	344,201	383,305	128	111	
Total	2,483,790	2,447,982	2,392,919	96	98	1,782,595

See footnotes at end of table.

--continued

**Stocks in Cold Storage: By Commodity,  
United States, November 2000 (Continued)**

Commodity	Stocks in All Warehouses			Percent of		Public Warehouse Stocks
	Nov 30, 1999	Oct 31, 2000	Nov 30, 2000	Nov 1999	Oct 2000	Nov 30, 2000
	<i>1,000 Pounds</i>	<i>1,000 Pounds</i>	<i>1,000 Pounds</i>	<i>Percent</i>	<i>Percent</i>	<i>1,000 Lbs</i>
Potatoes						
French Fries	1,019,535	1,104,307	1,053,610	103	95	
Other Frozen	234,996	247,205	231,497	99	94	
Total	1,254,531	1,351,512	1,285,107	102	95	934,431
Meat						
Frozen Beef						
Boneless <sup>2</sup>	267,198	331,173	332,238	124	100	
Beef Cuts <sup>3</sup>	41,738	61,826	58,759	141	95	
Total	308,936	392,999	390,997	127	99	370,564
(Government Owned)	3,915	1,768	2,928	75	166	
Frozen Pork						
Picnics, Bone-in	13,827	7,199	9,160	66	127	
Hams, Total	82,820	134,805	95,224	115	71	85,236
Bone-in	48,975	70,679	40,421	83	57	36,257
Boneless <sup>4</sup>	33,845	64,126	54,803	162	85	48,979
Bellies	26,170	20,593	38,712	148	188	
Loins, Total	20,607	20,830	32,660	158	157	29,044
Bone-in	11,090	8,690	16,316	147	188	
Boneless <sup>5</sup>	9,517	12,140	16,344	172	135	
Ribs <sup>6</sup>	55,100	42,505	54,454	99	128	
Butts	11,338	11,679	10,615	94	91	
Trimmings <sup>7</sup>	52,459	54,069	62,502	119	116	
Other <sup>8</sup>	95,334	76,613	77,923	82	102	
Variety Meats <sup>9</sup>	51,258	52,590	50,815	99	97	
Unclassified <sup>10</sup>	13,622	23,005	21,340	157	93	
Total	422,535	443,888	453,405	107	102	402,458
(Government Owned)	5,771	7,896	7,649	133	97	
Other						
Veal	4,361	4,647	5,654	130	122	
Lamb & Mutton	9,446	12,195	12,482	132	102	
Total	13,807	16,842	18,136	131	108	18,068
Canned						
Canned Hams	4,717	6,828	6,169	131	90	
Other Canned Meat	461	1,363	863	187	63	
Total	5,178	8,191	7,032	136	86	4,879
Total	750,456	861,920	869,570	116	101	795,969
Miscellaneous						
Cooler	977,075	1,011,162	813,648	83	80	528,453
Freezer	1,867,437	2,243,637	2,201,675	118	98	2,123,132
Total	2,844,512	3,254,799	3,015,323	106	93	2,651,585
Commodities						
Stored in Coolers	8,119,082	9,208,644	8,224,541	101	89	1,271,367
Stored in Freezers	10,470,601	11,324,051	10,897,142	104	96	7,770,134
Total	18,589,683	20,532,695	19,121,683	103	93	9,041,501

<sup>1</sup> Adjusted to 42.0 degrees Brix equivalent (9.896 pounds per gallon).

<sup>2</sup> Includes all boxed boneless beef, such as ground beef, roasts, steaks, loins, strips, rounds, trimmings, etc. Variety meats (edible offal), such as tongues, livers, hearts, kidneys, and other organs removed from slaughtered beef, are included as miscellaneous freezer stocks.

<sup>3</sup> Includes all boxed primal beef cuts, bone-in.

<sup>4</sup> Includes full ham, bone removed and individual muscles separated.

<sup>5</sup> Includes pork tenderloins.

<sup>6</sup> Includes spareribs and backribs.

<sup>7</sup> Includes 42% regular trimmings, 72% special trimmings, boneless picnic meat, jowls, neckbone trimmings, blade, cheek, head, and shank meat, etc. Packaged bacon, sausage, and processed items, such as hot dogs and luncheon meats, are included in miscellaneous cooler or freezer stocks.

<sup>8</sup> Includes ears, tails, feet, neckbones and snouts.

<sup>9</sup> Includes tongues, kidneys, livers, stomachs, hearts, chitterlings, salivary glands, and other organs removed from slaughtered hogs.

<sup>10</sup> Includes pork unable to be classified elsewhere in this report.

**Stocks in Cold Storage: By Commodity, Region,  
and United States, October 31, 2000**

Commodity	New England	Middle Atlantic	East North Central	West North Central	South Atlantic
	<i>1,000 Pounds</i>	<i>1,000 Pounds</i>	<i>1,000 Pounds</i>	<i>1,000 Pounds</i>	<i>1,000 Pounds</i>
Total Fresh Apples	68,076	607,024	454,936	4,768	386,720
Nuts					
Shelled					
Peanuts		12	161	38	205,938
Pecans <sup>1</sup>		132			9,185
In-Shell					
Pecans <sup>1</sup>					12,409
Dairy Products					
Natural Cheese					
American, Total	19,251	49,936	262,171	99,461	8,365
Other Natural Cheese	388	7,210	68,942	59,536	611
Frozen Poultry					
Broilers (Whole)	97	1,074	740	394	9,820
Hens	143	141	432	1,303	1,839
Other Chicken	1,922	26,588	17,068	25,777	189,123
Total	2,162	27,803	18,240	27,474	200,782
Whole Turkeys	9,932	32,326	38,260	52,811	35,555
Other Turkey	258	12,877	15,003	50,432	45,758
Total	10,190	45,203	53,263	103,243	81,313
Ducks		394	3,139	109	31
Total	12,352	73,400	74,642	130,826	282,126
Frozen Fruit					
Apples	28	12,851	27,322	127	236
Blueberries	19,314	8,405	43,960	295	4,374
Cherries, Tart (RSP)	41	10,614	110,116	100	28
Cherries, Sweet		504	9,854	75	13
Peaches	27	2,417	6,354	211	351
Raspberries, Red	196	962	974	108	51
Strawberries, Total	70	2,851	4,567	2,152	903
Other Frozen Fruit	80,263	60,140	399,540	754	1,316

See footnotes at end of table.

--continued

**Stocks in Cold Storage: By Commodity, Region,  
and United States, October 31, 2000 (continued)**

Commodity	East South Central	West South Central	Mountain	Pacific	US Total
	<i>1,000 Pounds</i>	<i>1,000 Pounds</i>	<i>1,000 Pounds</i>	<i>1,000 Pounds</i>	<i>1,000 Pounds</i>
Total Fresh Apples	59	4,728	126,489	4,695,053	6,347,853
Nuts					
Shelled					
Peanuts	28,822	70,727	141	313	306,152
Pecans <sup>1</sup>	419	17,357		123	27,216
In-Shell					
Pecans <sup>1</sup>	740	92,765		1	105,915
Dairy Products					
Natural Cheese					
American, Total		375	10,540	73,845	523,944
Other Natural Cheese	153	735	849	10,637	149,061
Frozen Poultry					
Broilers (Whole)	3,600	14,873	530	944	32,072
Hens	1,746	2,613	148	284	8,649
Other Chicken	147,346	269,115	2,738	40,243	719,920
Total	152,692	286,601	3,416	41,471	760,641
Whole Turkeys	10,172	47,626	15,775	61,785	304,242
Other Turkey	2,944	20,892	6,822	16,142	171,128
Total	13,116	68,518	22,597	77,927	475,370
Ducks	35	803	1	53	4,565
Total	165,843	355,922	26,014	119,451	1,240,576
Frozen Fruit					
Apples	81	2,427	75	13,042	56,189
Blueberries	69	517	81	22,300	99,315
Cherries, Tart (RSP)	13	100	2,368	9,829	133,209
Cherries, Sweet	23	249	535	2,848	14,101
Peaches	86	1,671	98	79,373	90,588
Raspberries, Red	104	597	9	59,733	62,734
Strawberries, Total	4,339	36,894	392	329,293	381,461
Other Frozen Fruit	395	8,836	585	181,428	733,257

See footnotes at end of table.

--continued

**Stocks in Cold Storage: By Commodity, Region,  
and United States, October 31, 2000 (continued)**

Commodity	New England	Middle Atlantic	East North Central	West North Central	South Atlantic
	<i>1,000 Pounds</i>	<i>1,000 Pounds</i>	<i>1,000 Pounds</i>	<i>1,000 Pounds</i>	<i>1,000 Pounds</i>
Frozen Juice					
Orange Juice Conc. <sup>2</sup>	12		875	159	1,110,696
Other Juice Concentrate	362	13,596	8,254	2,435	128,733
Frozen Vegetables <sup>3</sup>					
Asparagus		377	6,597	81	371
Limas, Fordhook		1,026	1,058	85	2,895
Limas, Baby		4,763	3,803	869	11,493
Green Beans, Reg. Cut		37,601	49,575	1,875	6,912
Green Beans, Fr. Style		11,745	11,427	681	1,080
Broccoli, Spears		7,867	1,928	307	2,016
Broccoli, Chopped & Cut		7,378	7,181	3,519	6,787
Brussels Sprouts		1,567	1,367	303	434
Carrots, Diced		5,114	15,184	365	3,113
Carrots, Other		13,197	14,999	922	4,089
Cauliflower		2,719	4,014	1,333	1,379
Corn, Cut		40,454	55,209	18,444	6,680
Corn, Cob		26,951	23,553	24,493	4,857
Mixed Vegetables		5,075	6,822	1,421	3,035
Okra		1,999	838	5,524	9,225
Onion Rings		672	9,216	2,400	885
Onions, Other		3,943	4,747	401	2,013
Blackeye Peas		153	104	83	3,293
Green Peas		47,784	30,323	8,663	12,132
Peas & Carrots Mixed		1,258	871	42	717
Spinach		11,049	2,778	762	4,859
Squash, Summer/Zucchini		3,503	12,821	648	6,017
Southern Greens		3,456	497	1,223	12,032
Other Vegetables		34,229	33,632	14,406	25,260
Potatoes					
French Fries	29,053	39,940	65,490	114,835	27,786
Other Frozen	3,259	6,315	39,811	10,106	2,738
Meat					
Frozen Beef					
Boneless	3,134	31,400	27,546	105,091	22,089
Beef Cuts	2,669	4,201	5,491	8,483	3,089
Frozen Pork					
Ribs	273	768	11,863	18,673	5,328
Trimming	134	5,675	13,723	25,023	7,073
Other	1,928	2,111	12,950	32,149	8,455
Other					
Veal	110	570	1,404	253	54
Lamb & Mutton	334	3,536	663	2,618	432

See footnotes at end of table.

--continued



**Stocks in Cold Storage: By Commodity, Region,  
and United States, October 31, 2000 (continued)**

Commodity	East South Central	West South Central	Mountain	Pacific	US Total
	<i>1,000 Pounds</i>	<i>1,000 Pounds</i>	<i>1,000 Pounds</i>	<i>1,000 Pounds</i>	<i>1,000 Pounds</i>
Frozen Juice					
Orange Juice Concentrate	60	3,980	1,295	52,276	1,169,353
Other Juice Concentrate	846	19,949	679	141,548	316,402
Frozen Vegetables <sup>3</sup>					
Asparagus		439	114	5,408	13,387
Limas, Fordhook		573	23	12,272	17,932
Limas, Baby		569	2,429	15,581	39,507
Green Beans, Reg. Cut		1,687	200	85,212	183,062
Green Beans, Fr. Style		235	59	14,831	40,058
Broccoli, Spears		13,354	79	9,884	35,435
Broccoli, Chopped & Cut		18,052	1,014	40,969	84,900
Brussels Sprouts		766	42	10,468	14,947
Carrots, Diced		1,269	456	35,629	61,130
Carrots, Other		14,137	589	132,541	180,474
Cauliflower		13,507	128	23,572	46,652
Corn, Cut		2,167	4,876	285,061	412,891
Corn, Cob		2,686	12,165	202,591	297,296
Mixed Vegetables		6,627	86	25,324	48,390
Okra		41,196		673	59,455
Onion Rings		948	774	253	15,148
Onions, Other		2,184	5,895	18,225	37,408
Blackeye Peas		968		164	4,765
Green Peas		2,114	19,509	238,812	359,337
Peas & Carrots Mixed		518		5,469	8,875
Spinach		6,402	5,471	29,301	60,622
Squash, Summer/Zucchini		4,431	857	19,518	47,795
Southern Greens		16,057		1,050	34,315
Other Vegetables		43,304	3,865	189,505	344,201
Potatoes					
French Fries	1,161	11,732	318,205	496,105	1,104,307
Other Frozen	532	6,158	55,914	122,372	247,205
Meat					
Frozen Beef					
Boneless <sup>4</sup>	7,699	69,311	5,011	59,892	331,173
Beef Cuts <sup>5</sup>	3,078	14,741	8,870	11,204	61,826
Frozen Pork					
Ribs <sup>6</sup>	1,709	1,647	2	2,242	42,505
Trimmings <sup>7</sup>	203	1,748	61	429	54,069
Other <sup>8</sup>	10,421	3,092	181	5,326	76,613
Other					
Veal		225		2,031	4,647
Lamb & Mutton		358	603	3,651	12,195

<sup>1</sup> East North Central combined with South Atlantic. Mountain and West North Central combined with West South Central.

<sup>2</sup> Middle Atlantic combined with South Atlantic.

<sup>3</sup> New England combined with Middle Atlantic. East South Central combined with South Atlantic.

<sup>4</sup> Includes all boxed boneless beef, such as ground beef, roasts, steaks, loins, strips, rounds, trimmings, etc. Variety meats (edible offal), such as tongues, livers, hearts, kidneys, and other organs removed from slaughtered beef, are included as miscellaneous freezer stocks.

<sup>5</sup> Includes all boxed primal beef cuts, bone-in.

<sup>6</sup> Includes spareribs and backribs.

<sup>7</sup> Includes 42% regular trimmings, 72% special trimmings, boneless picnic meat, jowls, neckbone trimmings, blade, cheek, head, and shank meat, etc. Packaged bacon, sausage, and processed items, such as hot dogs and luncheon meats, are included in miscellaneous cooler or freezer stocks.

<sup>8</sup> Includes ears, tails, feet, neckbones and snouts.

**Stocks in Cold Storage: By Commodity, Region,  
and United States, November 30, 2000**

Commodity	New England	Middle Atlantic	East North Central	West North Central	South Atlantic
	<i>1,000 Pounds</i>	<i>1,000 Pounds</i>	<i>1,000 Pounds</i>	<i>1,000 Pounds</i>	<i>1,000 Pounds</i>
Total Fresh Apples	52,530	558,899	378,835	1,951	274,188
Nuts					
Shelled					
Peanuts		54	168	29	211,579
Pecans <sup>1</sup>		107			9,136
In-Shell					
Pecans <sup>1</sup>		44			16,592
Dairy Products					
Natural Cheese					
American, Total	18,761	45,553	259,836	98,181	5,494
Other Natural Cheese	447	6,426	67,863	55,400	600
Frozen Poultry					
Broilers (Whole)	97	1,078	700	386	9,138
Hens	123	28	549	1,810	1,031
Other Chicken	1,897	25,217	16,147	25,495	189,924
Total	2,117	26,323	17,396	27,691	200,093
Whole Turkeys	755	7,083	6,146	20,141	15,213
Other Turkey	299	8,690	14,196	44,681	40,652
Total	1,054	15,773	20,342	64,822	55,865
Ducks		404	3,178	92	12
Total	3,171	42,500	40,916	92,605	255,970
Frozen Fruit					
Apples	10	14,159	28,278	104	255
Blueberries	18,689	7,533	42,559	246	4,017
Cherries, Tart (RSP)	37	10,109	101,567	110	279
Cherries, Sweet		410	9,216	63	4
Peaches	25	2,260	5,691	180	335
Raspberries, Red	160	982	958	82	57
Strawberries, Total	94	3,471	4,281	1,752	991
Other Frozen Fruit	89,097	66,997	384,436	1,232	1,135

See footnotes at end of table.

--continued

**Stocks in Cold Storage: By Commodity, Region,  
and United States, November 30, 2000 (continued)**

Commodity	East South Central	West South Central	Mountain	Pacific	US Total
	<i>1,000 Pounds</i>	<i>1,000 Pounds</i>	<i>1,000 Pounds</i>	<i>1,000 Pounds</i>	<i>1,000 Pounds</i>
Total Fresh Apples		4,040	97,369	4,273,702	5,641,514
Nuts					
Shelled					
Peanuts	37,873	76,590	144	240	326,677
Pecans <sup>1</sup>	495	20,065		137	29,940
In-Shell					
Pecans <sup>1</sup>	3,259	94,288		1	114,184
Dairy Products					
Natural Cheese					
American, Total		348	11,407	76,455	516,035
Other Natural Cheese	147	682	978	7,885	140,428
Frozen Poultry					
Broilers (Whole)	3,325	15,348	510	982	31,564
Hens	1,392	2,392	133	604	8,062
Other Chicken	140,891	274,463	2,649	39,895	716,578
Total	145,608	292,203	3,292	41,481	756,204
Whole Turkeys	2,001	18,218	9,108	29,804	108,469
Other Turkey	2,537	20,086	6,235	13,633	151,009
Total	4,538	38,304	15,343	43,437	259,478
Ducks	1	723	1	126	4,537
Total	150,147	331,230	18,636	85,044	1,020,219
Frozen Fruit					
Apples	124	2,358	77	13,412	58,777
Blueberries	82	470	79	19,936	93,611
Cherries, Tart (RSP)	41	104	2,185	7,864	122,296
Cherries, Sweet	2	180	394	2,648	12,917
Peaches	70	1,446	92	74,234	84,333
Raspberries, Red	243	578	8	55,075	58,143
Strawberries, Total	4,160	34,153	219	301,210	350,331
Other Frozen Fruit	587	8,955	5,006	216,001	773,446

See footnotes at end of table.

--continued

**Stocks in Cold Storage: By Commodity, Region,  
and United States, November 30, 2000 (continued)**

Commodity	New England	Middle Atlantic	East North Central	West North Central	South Atlantic
	<i>1,000 Pounds</i>	<i>1,000 Pounds</i>	<i>1,000 Pounds</i>	<i>1,000 Pounds</i>	<i>1,000 Pounds</i>
Frozen Juice					
Orange Juice Conc. <sup>2</sup>	10		895	171	1,138,157
Other Juice Concentrate	276	7,151	8,013	1,961	121,455
Frozen Vegetables <sup>3</sup>					
Asparagus		332	6,184	70	339
Limas, Fordhook		1,629	1,108	87	1,672
Limas, Baby		4,791	3,196	792	9,543
Green Beans, Reg. Cut		32,730	43,336	1,568	5,322
Green Beans, Fr. Style		10,803	10,101	584	998
Broccoli, Spears		8,361	2,167	458	1,697
Broccoli, Chopped & Cut		6,574	7,048	3,402	6,368
Brussels Sprouts		1,945	1,493	302	549
Carrots, Diced		8,576	22,999	667	7,340
Carrots, Other		15,850	16,669	718	6,202
Cauliflower		3,708	4,068	1,212	1,622
Corn, Cut		37,917	49,783	15,902	6,683
Corn, Cob		22,749	21,507	24,104	3,541
Mixed Vegetables		4,520	6,162	1,183	3,536
Okra		2,103	849	5,109	8,497
Onion Rings		650	8,878	1,805	714
Onions, Other		4,226	4,745	388	1,919
Blackeye Peas		296	117	83	3,029
Green Peas		39,660	27,052	7,661	11,362
Peas & Carrots Mixed		1,140	748	28	810
Spinach		13,632	2,669	553	4,719
Squash, Summer/Zucchini		5,168	11,266	519	5,219
Southern Greens		1,007	471	1,531	12,707
Other Vegetables		46,686	30,737	13,744	25,794
Potatoes					
French Fries	28,739	38,040	62,276	117,868	29,715
Other Frozen	3,528	8,828	37,870	6,404	2,640
Meat					
Frozen Beef					
Boneless <sup>4</sup>	3,671	32,121	28,380	104,034	17,099
Beef Cuts <sup>5</sup>	2,381	4,270	4,713	8,141	3,008
Frozen Pork					
Ribs <sup>6</sup>	331	787	15,362	25,177	7,179
Trimmings <sup>7</sup>	189	8,702	14,904	29,129	7,107
Other <sup>8</sup>	1,928	1,605	12,457	38,707	7,118
Other					
Veal	122	1,492	1,317	243	27
Lamb & Mutton	324	3,545	667	2,852	433

See footnotes at end of table.

--continued

**Stocks in Cold Storage: By Commodity, Region,  
and United States, November 30, 2000 (continued)**

Commodity	East South Central	West South Central	Mountain	Pacific	US Total
	<i>1,000 Pounds</i>	<i>1,000 Pounds</i>	<i>1,000 Pounds</i>	<i>1,000 Pounds</i>	<i>1,000 Pounds</i>
Frozen Juice					
Orange Juice Concentrate	53	4,062	1,329	51,987	1,196,664
Other Juice Concentrate	717	20,039	657	130,992	291,261
Frozen Vegetables <sup>3</sup>					
Asparagus		430	171	5,732	13,258
Limas, Fordhook		546	22	11,057	16,121
Limas, Baby		586	2,409	13,713	35,030
Green Beans, Reg. Cut		1,508	231	76,498	161,193
Green Beans, Fr. Style		258	86	12,378	35,208
Broccoli, Spears		12,247	16	8,064	33,010
Broccoli, Chopped & Cut		17,357	876	38,413	80,038
Brussels Sprouts		909	42	13,049	18,289
Carrots, Diced		1,263	402	58,696	99,943
Carrots, Other		13,547	606	144,791	198,383
Cauliflower		15,267	98	26,680	52,655
Corn, Cut		1,771	4,530	250,066	366,652
Corn, Cob		2,388	11,884	186,882	273,055
Mixed Vegetables		6,356	348	23,927	46,032
Okra		37,548		670	54,776
Onion Rings		1,073	774	343	14,237
Onions, Other		1,776	6,605	20,420	40,079
Blackeye Peas		921		185	4,631
Green Peas		7,097	18,766	212,647	324,245
Peas & Carrots Mixed		692	12	3,803	7,233
Spinach		6,048	4,118	24,953	56,692
Squash, Summer/Zucchini		3,994	826	17,019	44,011
Southern Greens		18,146		981	34,843
Other Vegetables		67,855	8,110	190,379	383,305
Potatoes					
French Fries	4,940	11,005	307,196	453,831	1,053,610
Other Frozen	355	6,822	46,018	119,032	231,497
Meat					
Frozen Beef					
Boneless <sup>4</sup>	6,110	73,233	5,083	62,507	332,238
Beef Cuts <sup>5</sup>	3,059	13,332	9,909	9,946	58,759
Frozen Pork					
Ribs <sup>6</sup>	1,777	1,786	3	2,052	54,454
Trimmings <sup>7</sup>	223	1,962	54	232	62,502
Other <sup>8</sup>	7,458	2,941	268	5,441	77,923
Other					
Veal		405		2,048	5,654
Lamb & Mutton		350	607	3,704	12,482

<sup>1</sup> East North Central combined with South Atlantic. Mountain and West North Central Combined with West South Central.

<sup>2</sup> Middle Atlantic combined with South Atlantic.

<sup>3</sup> New England combined with Middle Atlantic. East South Central combined with South Atlantic.

<sup>4</sup> Includes all boxed boneless beef, such as ground beef, roasts, steaks, loins, strips, rounds, trimmings, etc. Variety meats (edible offal), such as tongues, livers, hearts, kidneys, and other organs removed from slaughtered beef, are included as miscellaneous freezer stocks.

<sup>5</sup> Includes all boxed primal beef cuts, bone-in.

<sup>6</sup> Includes spareribs and backribs.

<sup>7</sup> Includes 42% regular trimmings, 72% special trimmings, boneless picnic meat, jowls, neckbone trimmings, blade, cheek, head, and shank meat, etc. Packaged bacon, sausage, and processed items, such as hot dogs and luncheon meats, are included in miscellaneous cooler or freezer stocks.

<sup>8</sup> Includes ears, tails, feet, neckbones and snouts.

**Public General Warehouses: Cold Storage Space Occupied  
by Region and United States, November 2000**

Region	Cooler				Freezer			
	Usable Space	Usable Space Occupied			Usable Space	Usable Space Occupied		
		Nov 30 2000	Nov 30 1999	Oct 31 2000		Nov 30 2000	Nov 30 1999	Oct 31 2000
	<i>1,000 Cu Ft</i>	<i>Percent</i>	<i>Percent</i>	<i>Percent</i>	<i>1,000 Cu Ft</i>	<i>Percent</i>	<i>Percent</i>	<i>Percent</i>
New England	2,167	55	62	63	19,586	77	73	71
Middle Atlantic	35,847	74	47	52	104,208	79	70	64
E. North Central	54,545	50	49	54	197,851	60	57	50
W. North Central	44,426	29	38	39	148,611	48	55	55
South Atlantic	47,806	47	37	38	184,695	62	58	54
E. South Central	8,973	54	61	66	69,356	46	44	40
W. South Central	20,852	32	33	38	134,161	64	61	58
Mountain	7,876	67	50	44	53,842	63	60	57
Pacific	43,598	35	40	38	273,986	76	77	74
US	266,090	46	42	45	1,186,296	64	63	59

## Cold Storage Regions



**Apples in Cold Storage: By State  
and United States, November 2000**

State	All Warehouses		
	Nov 30, 1999	Oct 31, 2000	Nov 30, 2000
	<i>1,000 Pounds</i>	<i>1,000 Pounds</i>	<i>1,000 Pounds</i>
CA	205,676	160,309	109,346
MI	534,061	416,923	352,339
N ENG	93,970	68,076	52,530
NY	353,010	321,342	301,098
OH	26,466	20,835	16,370
OR	41,238	84,742	58,139
PA	326,196	254,385	257,107
VA	235,783	242,093	171,872
WA	3,496,527	4,450,003	4,106,216
WV	82,078	69,823	49,578
Other States	128,884	259,322	166,919
US	5,523,889	6,347,853	5,641,514

**Total French Fries in Cold Storage:  
by Region and United States, October 31, 1980, 1985, 1990, 1995 and 2000**

Region	October 31									
	1980		1985		1990		1995		2000	
	<i>1,000 Pounds</i>	<i>Pct of Total</i>	<i>1,000 Pounds</i>	<i>Pct of Total</i>	<i>1,000 Pounds</i>	<i>Pct of Total</i>	<i>1,000 Pounds</i>	<i>Pct of Total</i>	<i>1,000 Pounds</i>	<i>Pct of Total</i>
New England	32,648	5.1	40,227	4.8	35,695	4.7	37,429	3.8	29,053	2.7
Middle Atlantic	14,920	2.3	16,699	2.0	11,865	1.5	18,046	1.8	39,940	3.6
E. No. Central	47,354	7.4	62,911	7.5	68,858	9.0	88,265	8.9	65,490	5.9
W. No. Central	55,513	8.7	52,924	6.3	37,370	4.9	67,995	6.9	114,835	10.4
South Atlantic	9,521	1.5	25,221	3.0	38,073	5.0	43,995	4.4	27,786	2.5
E. So. Central	8,400	1.3	9,192	1.0	5,919	0.8	3,935	0.4	1,161	0.1
W. So. Central	6,612	1.1	6,873	0.7	1,579	0.1	2,279	0.2	11,732	1.1
Mount	234,702	36.9	292,903	34.7	237,998	31.1	307,235	31.0	318,205	28.8
Pacific	227,056	35.7	337,324	40.0	328,499	42.9	422,870	42.6	496,105	44.9
US	636,726	100.0	844,274	100.0	765,856	100.0	992,049	100.0	1,104,307	100.0

Seventy-five percent of the October 31, 2000 French fry cold storage stocks were held in the Pacific and Mountain regions, virtually unchanged from 20 years ago. However, in the last four decades French fry stocks have increased almost 15 times.

**Total French Fries in Cold Storage: United States, October 31, 1960 to 2000**

Year	Oct 31 Stocks <i>1,000 lbs.</i>	Percent Previous Period	Year	Oct 31 Stocks <i>1,000 lbs.</i>	Percent Previous Period	Year	Oct 31 Stocks <i>1,000 lbs.</i>	Percent Previous Period
1960	73,952		1990	765,856	90.7	1996	1,030,995	103.9
1965	223,119	301.7	1991	843,408	110.1	1997	1,124,383	109.1
1970	433,388	194.2	1992	821,725	97.4	1998	1,076,256	95.7
1975	539,651	124.5	1993	907,617	110.5	1999	1,073,381	99.7
1980	636,726	118.0	1994	908,378	100.1	2000	1,104,307	102.9
1985	844,274	132.6	1995	992,049	109.2			



**Survey Procedures:** Questionnaires are mailed about the 24th of each month to all operators on the list of approximately 1,400 public and private cold storage warehouses. In addition, apple data are obtained from special surveys and other sources (State Departments of Agriculture, U.S. Apple Association, etc.). All survey data represent stocks as of the end of the month.

Data are collected from warehouses artificially cooled to a temperature of 50 degrees Fahrenheit or lower, and whose food products are normally stored for 30 days or more. All food items in these facilities are reported regardless of the number of days stored at the time of the report. Also included are specialized storage facilities meeting the 30 day requirement, such as fruit houses, dairy manufacturing plants, frozen fruit, fruit juice, and vegetable processors, and poultry and meat packing plants. Excluded are stocks in space maintained by wholesalers, jobbers, distributors, chain stores, locker plants containing individual lockers, meat packer branch houses, and frozen food processors whose entire inventories are turned over more than once a month.

**Estimating Procedures:** Data for reporting firms are added to estimates for non-reporting firms to obtain regional and National totals. Estimates for non-reporting firms are obtained by multiplying the previous month's figure by a percent change from the previous month. The percent change is calculated for each item from totals of the current and previous month summed from firms that reported both months.

**Revision Policy:** Data are revised the following month based on late reports or corrected data. Final figures are published in the annual summary in February of the following year.

**Reliability:** Reports are received from 900 firms each month which represent about 70 percent of the total capacity. Firms that are not on the list or firms who have never reported are not represented in the data. Monthly data can vary due to different firms reporting month to month. Survey data are also subject to non-sampling errors such as omissions and mistakes in reporting and in processing the data. While these errors cannot be measured directly, they are minimized by carefully reviewing all reported data for consistency and reasonableness.

The next "Cold Storage" report will be released at 3 p.m. on January 19, 2001.

The United States Department of Agriculture (USDA) prohibits discrimination in all its programs on the basis of race, color, national origin, gender, religion, age, disability, political beliefs, sexual orientation, and marital or family status. (Not all prohibited bases apply to all programs.) Persons with disabilities who require alternative means for communication of program information (braille, large print, audiotape, etc.) should contact the USDA's TARGET Center at 202-720-2600 (voice and TDD).

To file a complaint of discrimination, write USDA, Director, Office of Civil Rights, Room 326-W, Whitten Building, 14th and Independence Avenue, SW, Washington, D.C., 20250-9410, or call 202-720-5964 (voice or TDD). USDA is an equal opportunity provider and employer.

## ACCESS TO REPORTS!!

---

For your convenience, there are several ways to obtain NASS reports, data products, and services:

### INTERNET ACCESS

All NASS reports are available free of charge on the worldwide Internet. For access, connect to the Internet and go to the NASS Home Page at: <http://www.usda.gov/nass/>. Select "Today's Reports" or Publications and then Reports by Calendar or Publications and then Search, by Title or Subject.

### E-MAIL SUBSCRIPTION

There are two options for subscribing via e-mail. All NASS reports are available by subscription free of charge direct to your e-mail address. 1) Starting with the NASS Home Page at <http://www.usda.gov/nass/>, click on **Publications**, then click on the **Subscribe by E-mail** button which takes you to the page describing e-mail delivery of reports. Finally, click on **Go to the Subscription Page** and follow the instructions. 2) If you do NOT have Internet access, send an e-mail message to: [usda-reports@usda.mannlib.cornell.edu](mailto:usda-reports@usda.mannlib.cornell.edu). In the body of the message type the word: **list**.

### AUTOFAX ACCESS

NASSFax service is available for some reports from your fax machine. Please call 202-720-2000, using the handset attached to your fax. Respond to the voice prompts. Document 0411 is a list of available reports.

-----

### PRINTED REPORTS OR DATA PRODUCTS

CALL OUR TOLL-FREE ORDER DESK: 800-999-6779 (U.S. and Canada)  
Other areas, please call 703-834-0125      FAX: 703-834-0110  
(Visa, MasterCard, check, or money order acceptable for payment.)

-----

### ASSISTANCE

For **assistance** with general agricultural statistics or further information about NASS or its products or services, contact the **Agricultural Statistics Hotline** at **800-727-9540**, 7:30 a.m. to 4:00 p.m. ET, or e-mail: [nass@nass.usda.gov](mailto:nass@nass.usda.gov).

---

***Agricultural  
Outlook  
Forum  
2001***

---



**February 22-23, 2001  
Arlington, Virginia**

[www.usda.gov/oce](http://www.usda.gov/oce)  
[agforum@oce.usda.gov](mailto:agforum@oce.usda.gov)  
(202) 720-3050

**USDA's 77th outlook conference** will offer timely forecasts of farm prospects and insight on developments affecting the farm economy. The program will feature top business leaders and officials. Networking opportunities abound at this popular event, attended by over 1,300 people last February.

**Policy Debate.** Future farm policy will be a hot topic during 2001. The Forum will open with high-level panels on the next farm bill and world trade talks. Focus sessions during the two-day program will preview key policy issues on next year's agenda.

**Farm Prospects.** Attendees will hear leading analysts discuss the 2001 commodity outlook and industry trends, and receive USDA's latest 10-year projections.

**Act Now.** Get registration details and program updates at the Forum website. Can't attend in person? Sign up now to get speeches by e-mail after the Forum, or download them from the website.