



Cold Storage

Released April 20, 2001, by the National Agricultural Statistics Service (NASS), Agricultural Statistics Board, U.S. Department of Agriculture. For information on "Cold Storage" call Linda Simpson at (202) 720-8784, office hours 7:00 a.m. to 4:30 p.m. ET.

HIGHLIGHTS

Frozen food stocks in refrigerated warehouses on March 31, 2001, were greater than a year earlier for fruit. Cooler stocks of apples were also higher than a year earlier.

Butter stocks were 12 percent above February 2001 but were 20 percent below a year ago.

Total red meat supplies in freezers were 7 percent below February 2001 and 15 percent below March 2000. Frozen pork stocks were 6 percent below last month and were 18 percent below last year. Stocks of pork bellies decreased 4 percent from last month and were 25 percent below March 2000 stocks.

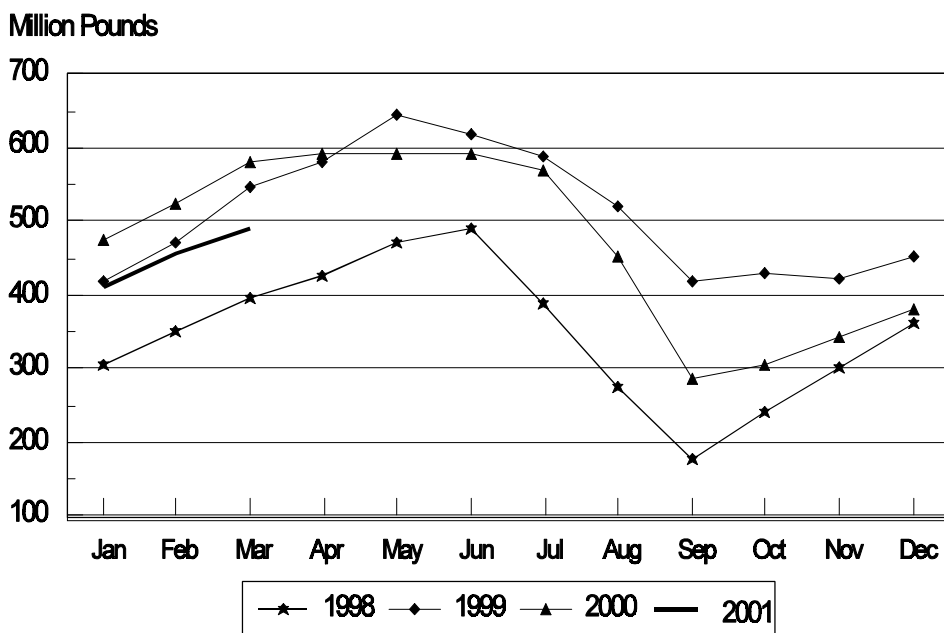
Total frozen poultry supplies on March 31, 2001, were down 2 percent from last month and were 17 percent below last year's level. Total stocks of chicken were 6 percent below last month and 21 percent below last year. Total pounds of turkey in freezers increased 6 percent from last month but were 10 percent below last year.

Public cooler occupancy on March 31, 2001, was at 40 percent of capacity, up 3 points from last year. Public freezer occupancy, at 52 percent, was down 6 percentage points from last year.

Table of Contents

	Page
Stocks in Cold Storage: By Commodity, United States, March 2001	3
Stocks in Cold Storage: By Commodity, Region, and United States, February 28, 2001	6
Stocks in Cold Storage: By Commodity, Region, and United States, March 31, 2001	10
Public General Warehouses: Cold Storage Space Occupied by Region and United States, March 2001	14
Apples in Cold Storage: By State and United States, March 2001	15
Survey and Estimating Procedures, Revision Policy and Reliability	16

**Shelled Peanuts
Cold Storage Stocks, 1998-2001
United States**



**Stocks in Cold Storage: By Commodity,
United States, March 2001**

Commodity	Stocks in All Warehouses			Percent of		Public Warehouse Stocks
	Mar 31, 2000	Feb 28, 2001	Mar 31, 2001	Mar 2000	Feb 2001	Mar 31, 2001
	<i>1,000 Pounds</i>	<i>1,000 Pounds</i>	<i>1,000 Pounds</i>	<i>Percent</i>	<i>Percent</i>	<i>1,000 Lbs</i>
Fresh Fruit						
Apples						
Regular Storage	250,078	309,538	233,516	93	75	
Controlled Atmosphere	2,284,392	3,098,080	2,369,296	104	76	
Total	2,534,470	3,407,618	2,602,812	103	76	373
Pears						
Bartlett	1,018	1,186				
Other Varieties	130,465	179,523	116,599	89	65	
Total	131,483	180,709	116,599	89	65	22
Nuts						
Shelled						
Peanuts	583,125	457,788	490,964	84	107	
Pecans	32,861	42,904	43,540	132	101	
Other Shelled	164,527	188,058	178,429	108	95	
Total	780,513	688,750	712,933	91	104	327,931
In-Shell						
Peanuts	25,821	17,054	23,803	92	140	
Pecans	265,843	170,910	148,907	56	87	
Other In-Shell	5,434	9,382	16,054	295	171	
Total	297,098	197,346	188,764	64	96	57,953
Dairy Products						
Butter, Total	114,037	81,315	91,476	80	112	82,672
(Government Owned)	339	279	717	212	257	
Natural Cheese						
American, Total	540,625	504,909	493,254	91	98	
(Government Owned)	57	1,806	1,955		108	
Swiss	14,786	13,007	12,491	84	96	
Other Natural Cheese	209,709	205,084	210,324	100	103	
Total	765,120	723,000	716,069	94	99	424,750
Eggs, Frozen						
Whites	3,107	2,985	2,238	72	75	
Yolks	757	1,127	866	114	77	
Whole & Mixed	9,048	10,339	9,857	109	95	
Unclassified	1,083	1,017	1,630	151	160	
Total	13,995	15,468	14,591	104	94	14,196
Frozen Poultry						
Chicken						
Broilers (Whole)	34,740	14,117	15,306	44	108	
Hens	8,012	6,737	6,602	82	98	
Other Chicken	776,682	662,452	622,462	80	94	
Total	819,434	683,306	644,370	79	94	
Turkey						
Whole Turkey	183,413	177,683	198,593	108	112	
Other Turkey	207,959	155,838	155,004	75	99	
Total	391,372	333,521	353,597	90	106	
Ducks	3,732	4,163	4,883	131	117	
Total	1,214,538	1,020,990	1,002,850	83	98	926,407

**Stocks in Cold Storage: By Commodity,
United States, March 2001 (Continued)**

Commodity	Stocks in All Warehouses			Percent of		Public Warehouse Stocks
	Mar 31, 2000	Feb 28, 2001	Mar 31, 2001	Mar 2000	Feb 2001	Mar 31, 2001
	<i>1,000 Pounds</i>	<i>1,000 Pounds</i>	<i>1,000 Pounds</i>	<i>Percent</i>	<i>Percent</i>	<i>1,000 Lbs</i>
Frozen Fruit						
Apples	86,471	70,725	71,280	82	101	
Apricots	5,899	5,597	4,539	77	81	
Blackberries, Total	15,965	20,097	17,741	111	88	
IQF	10,629	13,105	11,835	111	90	
Pails and Tubs	1,299	1,780	1,425	110	80	
Barrels, 400 lbs net	2,236	3,098	2,605	117	84	
Concentrate	1,801	2,114	1,876	104	89	
Blueberries	38,794	68,791	62,983	162	92	
Boysenberries	3,944	3,846	3,390	86	88	
Cherries, Tart (RSP)	84,957	98,810	88,724	104	90	
Cherries, Tart (Juice)	1,476	1,668	1,234	84	74	
Cherries, Sweet	11,059	11,729	10,717	97	91	
Grapes	3,736	4,418	3,913	105	89	
Peaches	41,916	57,442	48,601	116	85	
Raspberries, Black	563	1,088	1,174	209	108	
Raspberries, Red, Total	37,423	38,799	32,852	88	85	
IQF	13,291	12,758	12,224	92	96	
Pails and Tubs	10,512	12,753	11,102	106	87	
Barrels, 400 lbs net	11,101	11,937	8,397	76	70	
Concentrate	2,519	1,351	1,129	45	84	
Strawberries, Total	222,955	242,074	206,942	93	85	
Pkgs. 20 Oz. & Less	136,644		96,021	70		
Pkgs. Over 20 Oz.	86,311		110,921	129		
Other Frozen Fruit	557,333	746,425	669,428	120	90	
Total	1,112,491	1,371,509	1,223,518	110	89	685,751
Frozen Juice						
Orange Juice Conc. ¹	1,857,948	1,825,110	1,740,078	94	95	
(Gallon Equivalent)	187,747	184,429	175,836			
Other Juice Concentrate	301,288	275,739	313,355	104	114	
Total	2,159,236	2,100,849	2,053,433	95	98	231,832
Frozen Vegetables						
Asparagus	11,786	9,757	9,322	79	96	
Limas, Fordhook	8,281	10,315	8,726	105	85	
Limas, Baby	39,378	29,452	26,479	67	90	
Green Beans, Reg. Cut	90,883	115,214	89,303	98	78	
Green Beans, Fr. Style	23,336	21,171	18,425	79	87	
Broccoli, Spears	41,684	38,872	40,582	97	104	
Broccoli, Chopped & Cut	117,416	83,454	78,056	66	94	
Brussels Sprouts	20,881	29,996	19,674	94	66	
Carrots, Diced	70,946	110,850	100,923	142	91	
Carrots, Other	171,956	144,179	117,854	69	82	
Cauliflower	53,777	38,715	36,624	68	95	
Corn, Cut	229,704	248,314	195,290	85	79	
Corn, Cob	179,228	194,204	149,182	83	77	
Mixed Vegetables	47,758	48,739	42,129	88	86	
Okra	32,939	36,470	35,399	107	97	
Onion Rings	15,265	9,747	8,646	57	89	
Onions, Other	45,874	39,407	36,755	80	93	
Blackeye Peas	3,205	4,279	5,032	157	118	
Green Peas	168,198	226,238	179,700	107	79	
Peas & Carrots Mixed	7,607	8,620	8,109	107	94	
Spinach	75,318	46,785	61,429	82	131	
Squash, Summer/Zucchini	39,262	32,762	27,802	71	85	
Southern Greens	29,973	32,819	29,885	100	91	
Other Vegetables	270,042	305,608	267,426	99	88	
Total	1,794,697	1,865,967	1,592,752	89	85	1,066,089

See footnotes at end of table.

--continued

**Stocks in Cold Storage: By Commodity,
United States, March 2001 (Continued)**

Commodity	Stocks in All Warehouses			Percent of		Public Warehouse Stocks
	Mar 31, 2000	Feb 28, 2001	Mar 31, 2001	Mar 2000	Feb 2001	Mar 31, 2001
	<i>1,000 Pounds</i>	<i>1,000 Pounds</i>	<i>1,000 Pounds</i>	<i>Percent</i>	<i>Percent</i>	<i>1,000 Lbs</i>
Potatoes						
French Fries	1,016,403	998,227	1,009,221	99	101	
Other Frozen	266,948	256,493	231,649	87	90	
Total	1,283,351	1,254,720	1,240,870	97	99	944,811
Meat						
Frozen Beef						
Boneless ²	324,188	307,150	276,414	85	90	
Beef Cuts ³	53,965	53,062	53,014	98	100	
Total	378,153	360,212	329,428	87	91	309,302
(Government Owned)	5,265	3,277	3,126	59	95	
Frozen Pork						
Picnics, Bone-in	10,494	11,403	10,702	102	94	
Hams, Total	95,614	74,490	64,665	68	87	58,298
Bone-in	48,750	32,755	24,667	51	75	22,182
Boneless ⁴	46,864	41,735	39,998	85	96	36,116
Bellies	60,527	47,154	45,440	75	96	
Loins, Total	30,190	33,426	30,082	100	90	27,300
Bone-in	14,103	15,883	14,479	103	91	
Boneless ⁵	16,087	17,543	15,603	97	89	
Ribs ⁶	69,370	69,266	63,452	91	92	
Butts	10,957	13,247	13,534	124	102	
Trimmings ⁷	61,265	61,659	60,902	99	99	
Other ⁸	99,444	81,893	78,608	79	96	
Variety Meats ⁹	66,152	50,478	49,917	75	99	
Unclassified ¹⁰	30,658	25,273	21,070	69	83	
Total	534,671	468,289	438,372	82	94	382,436
(Government Owned)	6,713	8,943	8,149	121	91	
Other						
Veal	4,772	3,984	3,753	79	94	
Lamb & Mutton	11,437	13,141	13,752	120	105	
Total	16,209	17,125	17,505	108	102	17,327
Canned						
Canned Hams	4,871	6,105	5,429	111	89	
Other Canned Meat	442	901	66	15	7	
Total	5,313	7,006	5,495	103	78	4,010
Total	934,346	852,632	790,800	85	93	713,075
Miscellaneous						
Cooler	722,827	764,965	701,901	97	92	444,424
Freezer	2,159,691	2,105,519	2,091,750	97	99	2,015,132
Total	2,882,518	2,870,484	2,793,651	97	97	2,459,556
Commodities						
Stored in Coolers	5,236,824	5,969,394	5,044,573	96	85	1,259,463
Stored in Freezers	10,781,069	10,661,963	10,096,545	94	95	6,675,955
Total	16,017,893	16,631,357	15,141,118	95	91	7,935,418

¹ Adjusted to 42.0 degrees Brix equivalent (9.896 pounds per gallon).

² Includes all boxed boneless beef, such as ground beef, roasts, steaks, loins, strips, rounds, trimmings, etc. Variety meats (edible offal), such as tongues, livers, hearts, kidneys, and other organs removed from slaughtered beef, are included as miscellaneous freezer stocks.

³ Includes all boxed primal beef cuts, bone-in.

⁴ Includes full ham, bone removed and individual muscles separated.

⁵ Includes pork tenderloins.

⁶ Includes spareribs and backribs.

⁷ Includes 42% regular trimmings, 72% special trimmings, boneless picnic meat, jowls, neckbone trimmings, blade, cheek, head, and shank meat, etc. Packaged bacon, sausage, and processed items, such as hot dogs and luncheon meats, are included in miscellaneous cooler or freezer stocks.

⁸ Includes ears, tails, feet, neckbones and snouts.

⁹ Includes tongues, kidneys, livers, stomachs, hearts, chitterlings, salivary glands, and other organs removed from slaughtered hogs.

¹⁰ Includes pork unable to be classified elsewhere in this report.

**Stocks in Cold Storage: By Commodity, Region,
and United States, February 28, 2001**

Commodity	New England	Middle Atlantic	East North Central	West North Central	South Atlantic
	<i>1,000 Pounds</i>	<i>1,000 Pounds</i>	<i>1,000 Pounds</i>	<i>1,000 Pounds</i>	<i>1,000 Pounds</i>
Total Fresh Apples	21,292	368,891	223,440	588	148,592
Nuts					
Shelled					
Peanuts		7	166	28	282,342
Pecans ¹		207			12,714
In-Shell					
Pecans ¹		16			30,324
Dairy Products					
Natural Cheese					
American, Total	21,189	49,054	249,956	81,794	5,522
Other Natural Cheese	270	17,647	107,359	61,886	240
Frozen Poultry					
Broilers (Whole)	65	761	398	202	7,624
Hens	25	120	520	1,404	3,658
Other Chicken	1,284	28,893	16,184	28,893	177,755
Total	1,374	29,774	17,102	30,499	189,037
Whole Turkeys	2,120	8,445	11,396	39,716	28,659
Other Turkey	245	9,674	15,636	55,200	40,065
Total	2,365	18,119	27,032	94,916	68,724
Ducks		370	3,590	40	10
Total	3,739	48,263	47,724	125,455	257,771
Frozen Fruit					
Apples	39	22,857	33,095	147	489
Blueberries	14,468	5,412	31,880	198	1,471
Cherries, Tart (RSP)	28	6,909	83,994	68	402
Cherries, Sweet		275	8,555	58	4
Peaches	17	2,090	5,046	239	351
Raspberries, Red	123	894	597	55	37
Strawberries, Total	66	2,467	3,260	1,584	902
Other Frozen Fruit	104,171	53,931	326,413	90	13,093

See footnotes at end of table.

--continued

**Stocks in Cold Storage: By Commodity, Region,
and United States, February 28, 2001 (continued)**

Commodity	East South Central	West South Central	Mountain	Pacific	US Total
	<i>1,000 Pounds</i>	<i>1,000 Pounds</i>	<i>1,000 Pounds</i>	<i>1,000 Pounds</i>	<i>1,000 Pounds</i>
Total Fresh Apples		3,780	45,065	2,595,970	3,407,618
Nuts					
Shelled					
Peanuts	49,205	125,623	163	254	457,788
Pecans ¹	1,236	28,492		255	42,904
In-Shell					
Pecans ¹	3,538	137,032			170,910
Dairy Products					
Natural Cheese					
American, Total		591	11,442	85,361	504,909
Other Natural Cheese	154	343	6,456	10,729	205,084
Frozen Poultry					
Broilers (Whole)	537	3,781	364	385	14,117
Hens	503	217	31	259	6,737
Other Chicken	119,477	242,640	2,003	45,323	662,452
Total	120,517	246,638	2,398	45,967	683,306
Whole Turkeys	1,775	45,006	7,533	33,033	177,683
Other Turkey	193	18,454	7,167	9,204	155,838
Total	1,968	63,460	14,700	42,237	333,521
Ducks		21		132	4,163
Total	122,485	310,119	17,098	88,336	1,020,990
Frozen Fruit					
Apples	103	1,748	100	12,147	70,725
Blueberries	138	295	82	14,847	68,791
Cherries, Tart (RSP)	32	52	1,718	5,607	98,810
Cherries, Sweet	2	201	494	2,140	11,729
Peaches	48	560	22	49,069	57,442
Raspberries, Red	73	1,627	18	35,375	38,799
Strawberries, Total	3,002	21,230	259	209,304	242,074
Other Frozen Fruit	482	5,296	7,229	235,720	746,425

See footnotes at end of table.

--continued

**Stocks in Cold Storage: By Commodity, Region,
and United States, February 28, 2001 (continued)**

Commodity	New England	Middle Atlantic	East North Central	West North Central	South Atlantic
	<i>1,000 Pounds</i>	<i>1,000 Pounds</i>	<i>1,000 Pounds</i>	<i>1,000 Pounds</i>	<i>1,000 Pounds</i>
Frozen Juice					
Orange Juice Conc. ²	17		1,176	187	1,748,938
Other Juice Concentrate	51	12,279	7,855	931	109,414
Frozen Vegetables ³					
Asparagus		381	4,398	106	260
Limas, Fordhook		1,469	769	90	1,313
Limas, Baby		5,928	2,993	619	4,673
Green Beans, Reg. Cut		23,356	33,346	753	3,896
Green Beans, Fr. Style		8,180	4,989	46	362
Broccoli, Spears		6,071	2,231	412	1,294
Broccoli, Chopped & Cut		6,607	7,055	3,417	7,212
Brussels Sprouts		3,099	1,669	263	546
Carrots, Diced		8,807	21,430	510	7,389
Carrots, Other		13,418	13,735	549	5,595
Cauliflower		1,542	3,560	1,284	1,348
Corn, Cut		23,030	34,846	11,148	5,294
Corn, Cob		13,790	14,948	15,178	3,038
Mixed Vegetables		3,966	8,517	1,199	2,295
Okra		1,936	901	794	6,415
Onion Rings		508	4,410	1,861	797
Onions, Other		4,462	4,029	462	2,048
Blackeye Peas		262	104	81	2,400
Green Peas		32,295	24,424	6,430	7,119
Peas & Carrots Mixed		1,117	1,027	41	655
Spinach		12,403	2,305	509	3,878
Squash, Summer/Zucchini		4,997	7,422	452	4,188
Southern Greens		3,806	799	95	9,311
Other Vegetables		44,774	29,030	11,566	25,333
Potatoes					
French Fries	29,264	31,777	54,517	111,628	25,752
Other Frozen	5,026	7,901	34,316	10,170	2,367
Meat					
Frozen Beef					
Boneless	3,692	35,170	21,304	91,044	26,108
Beef Cuts	1,209	4,129	9,529	9,614	3,988
Frozen Pork					
Ribs	448	1,291	15,098	34,813	8,219
Trimming	130	1,978	14,971	34,666	6,616
Other	2,088	1,366	15,431	36,517	8,291
Other					
Veal	109	1,215	1,080	204	41
Lamb & Mutton	316	3,466	743	4,218	455

See footnotes at end of table.

--continued

**Stocks in Cold Storage: By Commodity, Region,
and United States, February 28, 2001 (continued)**

Commodity	East South Central	West South Central	Mountain	Pacific	US Total
	<i>1,000 Pounds</i>	<i>1,000 Pounds</i>	<i>1,000 Pounds</i>	<i>1,000 Pounds</i>	<i>1,000 Pounds</i>
Frozen Juice					
Orange Juice Concentrate	66	3,531	1,930	69,265	1,825,110
Other Juice Concentrate	540	20,752	392	123,525	275,739
Frozen Vegetables ³					
Asparagus		293	76	4,243	9,757
Limas, Fordhook		223	2	6,449	10,315
Limas, Baby		493	2,178	12,568	29,452
Green Beans, Reg. Cut		1,272	205	52,386	115,214
Green Beans, Fr. Style		168	73	7,353	21,171
Broccoli, Spears		12,520	58	16,286	38,872
Broccoli, Chopped & Cut		19,347	569	39,247	83,454
Brussels Sprouts		813	8	23,598	29,996
Carrots, Diced		1,453	140	71,121	110,850
Carrots, Other		11,727	849	98,306	144,179
Cauliflower		5,801	143	25,037	38,715
Corn, Cut		1,903	1,102	170,991	248,314
Corn, Cob		2,075	13,993	131,182	194,204
Mixed Vegetables		5,980	610	26,172	48,739
Okra		25,746		678	36,470
Onion Rings		920	1,003	248	9,747
Onions, Other		1,462	6,381	20,563	39,407
Blackeye Peas		858		574	4,279
Green Peas		5,335	15,854	134,781	226,238
Peas & Carrots Mixed		783	22	4,975	8,620
Spinach		9,883	1,530	16,277	46,785
Squash, Summer/Zucchini		2,478	852	12,373	32,762
Southern Greens		18,069		739	32,819
Other Vegetables		41,811	7,234	145,860	305,608
Potatoes					
French Fries	5,136	6,726	246,220	487,207	998,227
Other Frozen	210	6,142	48,336	142,025	256,493
Meat					
Frozen Beef					
Boneless ⁴	2,929	63,957	3,381	59,565	307,150
Beef Cuts ⁵	4,262	7,242	6,935	6,154	53,062
Frozen Pork					
Ribs ⁶	2,667	2,260	1	4,469	69,266
Trimnings ⁷	275	2,806	58	159	61,659
Other ⁸	8,393	5,396	296	4,115	81,893
Other					
Veal		70		1,265	3,984
Lamb & Mutton		213	494	3,236	13,141

¹ East North Central combined with South Atlantic. Mountain and West North Central combined with West South Central.

² Middle Atlantic combined with South Atlantic.

³ New England combined with Middle Atlantic. East South Central combined with South Atlantic.

⁴ Includes all boxed boneless beef, such as ground beef, roasts, steaks, loins, strips, rounds, trimmings, etc. Variety meats (edible offal), such as tongues, livers, hearts, kidneys, and other organs removed from slaughtered beef, are included as miscellaneous freezer stocks.

⁵ Includes all boxed primal beef cuts, bone-in.

⁶ Includes spareribs and backribs.

⁷ Includes 42% regular trimmings, 72% special trimmings, boneless picnic meat, jowls, neckbone trimmings, blade, cheek, head, and shank meat, etc. Packaged bacon, sausage, and processed items, such as hot dogs and luncheon meats, are included in miscellaneous cooler or freezer stocks.

⁸ Includes ears, tails, feet, neckbones and snouts.

**Stocks in Cold Storage: By Commodity, Region,
and United States, March 31, 2001**

Commodity	New England	Middle Atlantic	East North Central	West North Central	South Atlantic
	<i>1,000 Pounds</i>	<i>1,000 Pounds</i>	<i>1,000 Pounds</i>	<i>1,000 Pounds</i>	<i>1,000 Pounds</i>
Total Fresh Apples	12,565	267,544	164,026	378	111,737
Nuts					
Shelled					
Peanuts		24	180	30	320,026
Pecans ¹		231			12,259
In-Shell					
Pecans ¹		19			26,067
Dairy Products					
Natural Cheese					
American, Total	22,068	48,366	237,053	85,160	5,455
Other Natural Cheese	379	18,053	110,079	64,093	219
Frozen Poultry					
Broilers (Whole)	67	819	617	496	7,858
Hens	13	100	384	923	3,751
Other Chicken	1,475	26,454	16,059	33,611	160,655
Total	1,555	27,373	17,060	35,030	172,264
Whole Turkeys	3,235	11,149	16,481	36,973	31,711
Other Turkey	266	9,662	15,880	54,268	38,332
Total	3,501	20,811	32,361	91,241	70,043
Ducks		412	4,261	43	12
Total	5,056	48,596	53,682	126,314	242,319
Frozen Fruit					
Apples	36	22,050	34,491	137	481
Blueberries	13,869	4,771	28,589	172	2,335
Cherries, Tart (RSP)	26	6,128	75,742	69	396
Cherries, Sweet		264	7,725	45	3
Peaches	14	2,201	3,843	239	307
Raspberries, Red	121	1,545	565	42	40
Strawberries, Total	87	2,349	3,748	1,285	802
Other Frozen Fruit	88,175	48,606	316,859	58	843

See footnotes at end of table.

--continued

**Stocks in Cold Storage: By Commodity, Region,
and United States, March 31, 2001 (continued)**

Commodity	East South Central	West South Central	Mountain	Pacific	US Total
	<i>1,000 Pounds</i>	<i>1,000 Pounds</i>	<i>1,000 Pounds</i>	<i>1,000 Pounds</i>	<i>1,000 Pounds</i>
Total Fresh Apples		3,499	24,926	2,018,137	2,602,812
Nuts					
Shelled					
Peanuts	51,165	119,095	160	284	490,964
Pecans ¹	1,340	29,379		331	43,540
In-Shell					
Pecans ¹	3,164	119,657			148,907
Dairy Products					
Natural Cheese					
American, Total		583	11,151	83,418	493,254
Other Natural Cheese	155	517	6,024	10,805	210,324
Frozen Poultry					
Broilers (Whole)	582	3,902	362	603	15,306
Hens	810	488	29	104	6,602
Other Chicken	116,141	226,013	1,955	40,099	622,462
Total	117,533	230,403	2,346	40,806	644,370
Whole Turkeys	1,952	49,124	6,663	41,305	198,593
Other Turkey	193	19,728	7,241	9,434	155,004
Total	2,145	68,852	13,904	50,739	353,597
Ducks		25		130	4,883
Total	119,678	299,280	16,250	91,675	1,002,850
Frozen Fruit					
Apples	102	1,555	103	12,325	71,280
Blueberries	128	258	70	12,791	62,983
Cherries, Tart (RSP)	30	56	1,547	4,730	88,724
Cherries, Sweet	2	156	420	2,102	10,717
Peaches	81	499	24	41,393	48,601
Raspberries, Red	93	1,328	11	29,107	32,852
Strawberries, Total	2,657	18,880	317	176,817	206,942
Other Frozen Fruit	473	5,734	4,199	204,481	669,428

See footnotes at end of table.

--continued

**Stocks in Cold Storage: By Commodity, Region,
and United States, March 31, 2001 (continued)**

Commodity	New England	Middle Atlantic	East North Central	West North Central	South Atlantic
	<i>1,000 Pounds</i>	<i>1,000 Pounds</i>	<i>1,000 Pounds</i>	<i>1,000 Pounds</i>	<i>1,000 Pounds</i>
Frozen Juice					
Orange Juice Conc. ²	29		1,002	136	1,665,632
Other Juice Concentrate	53	17,053	8,332	849	134,573
Frozen Vegetables ³					
Asparagus		508	3,246	40	296
Limas, Fordhook		1,429	744	119	1,185
Limas, Baby		5,852	2,454	457	3,541
Green Beans, Reg. Cut		18,696	25,988	893	2,926
Green Beans, Fr. Style		6,990	4,247	73	277
Broccoli, Spears		6,278	2,393	437	1,135
Broccoli, Chopped & Cut		6,354	6,750	2,989	6,283
Brussels Sprouts		2,590	1,580	178	555
Carrots, Diced		9,982	19,887	957	5,809
Carrots, Other		11,068	11,301	629	5,448
Cauliflower		1,893	3,301	1,133	1,094
Corn, Cut		21,678	34,500	9,224	5,603
Corn, Cob		13,766	12,137	10,950	3,070
Mixed Vegetables		4,203	7,370	1,126	2,114
Okra		1,451	821	713	6,659
Onion Rings		466	4,057	1,304	817
Onions, Other		4,433	4,565	399	1,624
Blackeye Peas		169	85	87	3,339
Green Peas		25,499	17,718	5,515	5,095
Peas & Carrots Mixed		1,215	1,057	49	703
Spinach		9,970	2,402	566	3,747
Squash, Summer/Zucchini		4,120	6,254	414	3,552
Southern Greens		4,387	952	54	7,410
Other Vegetables		46,646	30,429	9,536	23,054
Potatoes					
French Fries	26,913	32,895	60,937	118,872	25,064
Other Frozen	4,179	8,903	39,160	8,345	1,667
Meat					
Frozen Beef					
Boneless ⁴	1,682	35,287	18,634	86,644	23,203
Beef Cuts ⁵	1,121	3,080	10,794	9,365	3,376
Frozen Pork					
Ribs ⁶	458	2,185	14,264	31,043	7,559
Trimming ⁷	154	769	16,197	33,245	6,407
Other ⁸	2,091	1,364	15,052	32,054	8,265
Other					
Veal	103	1,046	1,012	186	37
Lamb & Mutton	326	3,314	724	4,200	461

See footnotes at end of table.

--continued

**Stocks in Cold Storage: By Commodity, Region,
and United States, March 31, 2001 (continued)**

Commodity	East South Central	West South Central	Mountain	Pacific	US Total
	<i>1,000 Pounds</i>	<i>1,000 Pounds</i>	<i>1,000 Pounds</i>	<i>1,000 Pounds</i>	<i>1,000 Pounds</i>
Frozen Juice					
Orange Juice Concentrate	55	3,702	1,764	67,758	1,740,078
Other Juice Concentrate	562	25,353	292	126,288	313,355
Frozen Vegetables ³					
Asparagus		336	88	4,808	9,322
Limas, Fordhook		197	1	5,051	8,726
Limas, Baby		460	2,176	11,539	26,479
Green Beans, Reg. Cut		915	195	39,690	89,303
Green Beans, Fr. Style		199	123	6,516	18,425
Broccoli, Spears		11,210	130	18,999	40,582
Broccoli, Chopped & Cut		15,674	773	39,233	78,056
Brussels Sprouts		517	6	14,248	19,674
Carrots, Diced		2,148	52	62,088	100,923
Carrots, Other		11,402	848	77,158	117,854
Cauliflower		5,390	146	23,667	36,624
Corn, Cut		2,590	436	121,259	195,290
Corn, Cob		1,333	10,162	97,764	149,182
Mixed Vegetables		3,017	500	23,799	42,129
Okra		25,141		614	35,399
Onion Rings		1,011	746	245	8,646
Onions, Other		1,363	6,111	18,260	36,755
Blackeye Peas		1,136		216	5,032
Green Peas		1,810	13,832	110,231	179,700
Peas & Carrots Mixed		1,009	23	4,053	8,109
Spinach		17,800	1,226	25,718	61,429
Squash, Summer/Zucchini		1,505	862	11,095	27,802
Southern Greens		16,316		766	29,885
Other Vegetables		35,210	4,807	117,744	267,426
Potatoes					
French Fries	1,187	13,581	211,758	518,014	1,009,221
Other Frozen	105	4,834	45,828	118,628	231,649
Meat					
Frozen Beef					
Boneless ⁴	2,783	57,402	2,962	47,817	276,414
Beef Cuts ⁵	4,538	8,096	6,060	6,584	53,014
Frozen Pork					
Ribs ⁶	2,822	1,630	17	3,474	63,452
Trimnings ⁷	275	3,522	57	276	60,902
Other ⁸	8,187	5,793	296	5,506	78,608
Other					
Veal		88		1,281	3,753
Lamb & Mutton		144	686	3,897	13,752

¹ East North Central combined with South Atlantic. Mountain and West North Central Combined with West South Central.

² Middle Atlantic combined with South Atlantic.

³ New England combined with Middle Atlantic. East South Central combined with South Atlantic.

⁴ Includes all boxed boneless beef, such as ground beef, roasts, steaks, loins, strips, rounds, trimmings, etc. Variety meats (edible offal), such as tongues, livers, hearts, kidneys, and other organs removed from slaughtered beef, are included as miscellaneous freezer stocks.

⁵ Includes all boxed primal beef cuts, bone-in.

⁶ Includes spareribs and backribs.

⁷ Includes 42% regular trimmings, 72% special trimmings, boneless picnic meat, jowls, neckbone trimmings, blade, cheek, head, and shank meat, etc. Packaged bacon, sausage, and processed items, such as hot dogs and luncheon meats, are included in miscellaneous cooler or freezer stocks.

⁸ Includes ears, tails, feet, neckbones and snouts.

**Public General Warehouses: Cold Storage Space Occupied
by Region and United States, March 2001**

Region	Cooler				Freezer			
	Usable Space	Usable Space Occupied			Usable Space	Usable Space Occupied		
	Mar 31 2001	Mar 31 2000	Feb 28 2001	Mar 31 2001	Mar 31 2001	Mar 31 2000	Feb 28 2001	Mar 31 2001
	<i>1,000 Cu Ft</i>	<i>Percent</i>	<i>Percent</i>	<i>Percent</i>	<i>1,000 Cu Ft</i>	<i>Percent</i>	<i>Percent</i>	<i>Percent</i>
New England	2,158	55	63	68	19,586	75	60	56
Middle Atlantic	35,114	51	54	55	107,019	72	66	62
E. North Central	53,777	34	37	41	199,619	46	43	42
W. North Central	43,279	29	33	33	147,300	56	56	54
South Atlantic	47,683	40	45	36	185,050	56	52	50
E. South Central	8,937	39	49	44	69,384	38	39	39
W. South Central	20,843	34	32	28	134,302	63	52	52
Mountain	7,727	53	40	38	53,312	56	49	46
Pacific	43,035	31	37	39	281,353	63	63	61
US	262,553	37	40	40	1,196,925	58	54	52

Cold Storage Regions



**Apples in Cold Storage: By State
and United States, March 2001**

State	All Warehouses		
	Mar 31, 2000	Feb 28, 2001	Mar 31, 2001
	<i>1,000 Pounds</i>	<i>1,000 Pounds</i>	<i>1,000 Pounds</i>
CA	70,024	35,816	23,739
MI	193,012	215,482	160,481
N ENG	30,287	21,292	12,565
NY	183,960	210,126	157,164
OH	9,045	6,675	2,885
OR	22,805	33,475	16,659
PA	122,455	158,561	110,227
VA	117,469	100,784	79,013
WA	1,717,843	2,526,679	1,977,739
WV	35,303	28,045	20,654
Other States	32,267	70,683	41,686
US	2,534,470	3,407,618	2,602,812

Survey Procedures: Questionnaires are mailed about the 24th of each month to all operators on the list of approximately 1,400 public and private cold storage warehouses. In addition, apple data are obtained from special surveys and other sources (State Departments of Agriculture, U.S. Apple Association, etc.). All survey data represent stocks as of the end of the month.

Data are collected from warehouses artificially cooled to a temperature of 50 degrees Fahrenheit or lower, and whose food products are normally stored for 30 days or more. All food items in these facilities are reported regardless of the number of days stored at the time of the report. Also included are specialized storage facilities meeting the 30 day requirement, such as fruit houses, dairy manufacturing plants, frozen fruit, fruit juice, and vegetable processors, and poultry and meat packing plants. Excluded are stocks in space maintained by wholesalers, jobbers, distributors, chain stores, locker plants containing individual lockers, meat packer branch houses, and frozen food processors whose entire inventories are turned over more than once a month.

Estimating Procedures: Data for reporting firms are added to estimates for non-reporting firms to obtain regional and National totals. Estimates for non-reporting firms are obtained by multiplying the previous month's figure by a percent change from the previous month. The percent change is calculated for each item from totals of the current and previous month summed from firms that reported both months.

Revision Policy: Data are revised the following month based on late reports or corrected data. Final figures are published in the annual summary in February of the following year.

Reliability: Reports are received from 900 firms each month which represent about 70 percent of the total capacity. Firms that are not on the list or firms who have never reported are not represented in the data. Monthly data can vary due to different firms reporting month to month. Survey data are also subject to non-sampling errors such as omissions and mistakes in reporting and in processing the data. While these errors cannot be measured directly, they are minimized by carefully reviewing all reported data for consistency and reasonableness.

The next "Cold Storage" report will be released at 3 p.m. ET on May 18, 2001.

The United States Department of Agriculture (USDA) prohibits discrimination in all its programs on the basis of race, color, national origin, gender, religion, age, disability, political beliefs, sexual orientation, and marital or family status. (Not all prohibited bases apply to all programs.) Persons with disabilities who require alternative means for communication of program information (braille, large print, audiotape, etc.) should contact the USDA's TARGET Center at 202-720-2600 (voice and TDD).

To file a complaint of discrimination, write USDA, Director, Office of Civil Rights, Room 326-W, Whitten Building, 14th and Independence Avenue, SW, Washington, D.C., 20250-9410, or call 202-720-5964 (voice or TDD). USDA is an equal opportunity provider and employer.

ACCESS TO REPORTS!!

For your convenience, there are several ways to obtain NASS reports, data products, and services:

INTERNET ACCESS

All NASS reports are available free of charge on the worldwide Internet. For access, connect to the Internet and go to the NASS Home Page at: <http://www.usda.gov/nass/>. Select "Today's Reports" or Publications and then Reports by Calendar or Publications and then Search, by Title or Subject.

E-MAIL SUBSCRIPTION

There are two options for subscribing via e-mail. All NASS reports are available by subscription free of charge direct to your e-mail address. 1) Starting with the NASS Home Page at <http://www.usda.gov/nass/>, click on **Publications**, then click on the **Subscribe by E-mail** button which takes you to the page describing e-mail delivery of reports. Finally, click on **Go to the Subscription Page** and follow the instructions. 2) If you do NOT have Internet access, send an e-mail message to: usda-reports@usda.mannlib.cornell.edu. In the body of the message type the word: **list**.

AUTOFAX ACCESS

NASSFax service is available for some reports from your fax machine. Please call 202-720-2000, using the handset attached to your fax. Respond to the voice prompts. Document 0411 is a list of available reports.

PRINTED REPORTS OR DATA PRODUCTS

CALL OUR TOLL-FREE ORDER DESK: 800-999-6779 (U.S. and Canada)
Other areas, please call 703-834-0125 FAX: 703-834-0110
(Visa, MasterCard, check, or money order acceptable for payment.)

ASSISTANCE

For **assistance** with general agricultural statistics or further information about NASS or its products or services, contact the **Agricultural Statistics Hotline** at **800-727-9540**, 7:30 a.m. to 4:00 p.m. ET, or e-mail: nass@nass.usda.gov.