



Cold Storage

Released May 18, 2001, by the National Agricultural Statistics Service (NASS), Agricultural Statistics Board, U.S. Department of Agriculture. For information on "Cold Storage" call Linda Simpson at (202) 720-8784, office hours 7:00 a.m. to 4:30 p.m. ET.

HIGHLIGHTS

Frozen food stocks in refrigerated warehouses on April 30, 2001, were greater than year earlier levels for fruit, orange juice and potatoes.

Butter stocks were 16 percent above March 2001 but were 18 percent below a year ago.

Total red meat supplies in freezers were slightly below March 2001 and 17 percent below April 2000. Frozen pork stocks were 2 percent above last month but were 17 percent below last year. Stocks of pork bellies decreased 4 percent from last month and were 31 percent below April 2000 stocks.

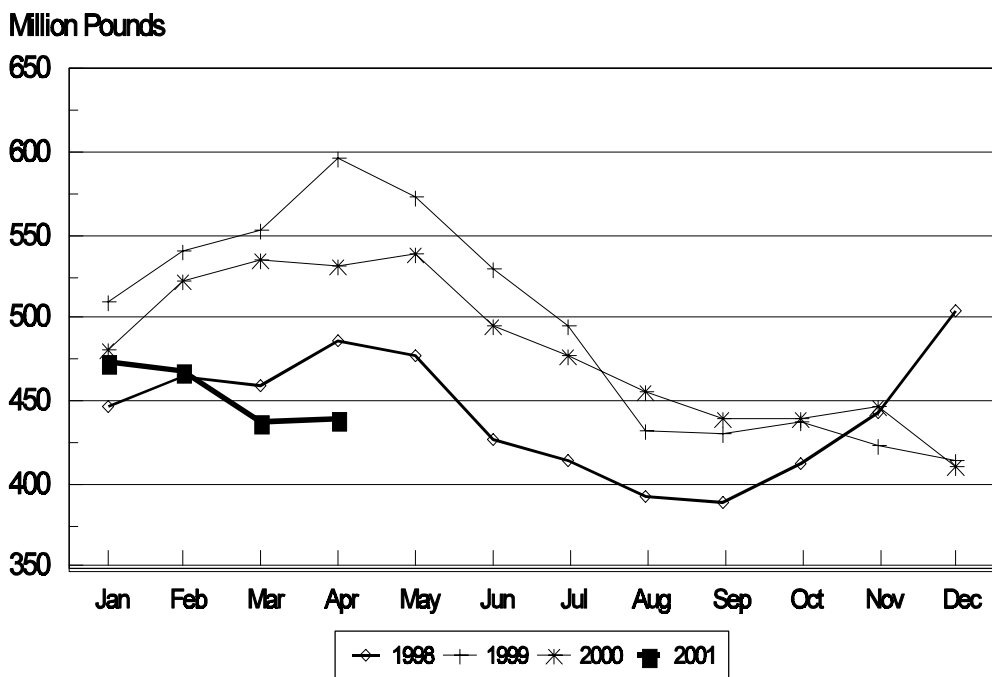
Total frozen poultry supplies on April 30, 2001, were up 5 percent from last month but were 17 percent below last year's level. Total stocks of chicken were 2 percent above last month but were 23 percent below last year. Total pounds of turkey in freezers increased 11 percent from last month but were 5 percent below last year.

Public cooler occupancy on April 30, 2001, was at 41 percent of capacity, up 3 points from last year. Public freezer occupancy, at 52 percent, was down 6 percentage points from last year.

Table of Contents

	Page
Stocks in Cold Storage: By Commodity, United States, April 2001	3
Stocks in Cold Storage: By Commodity, Region, and United States, March 31, 2001	6
Stocks in Cold Storage: By Commodity, Region, and United States, April 30, 2001	10
Public General Warehouses: Cold Storage Space Occupied by Region and United States, April 2001	14
Apples in Cold Storage: By State and United States, April 2001	15
Survey and Estimating Procedures, Revision Policy and Reliability	16

**Total Frozen Pork-Cold Storage Stocks
United States, 1998-2001**



**Stocks in Cold Storage: By Commodity,
United States, April 2001**

Commodity	Stocks in All Warehouses			Percent of		Public Warehouse Stocks
	Apr 30, 2000	Mar 31, 2001	Apr 30, 2001	Apr 2000	Mar 2001	Apr 30, 2001
	<i>1,000 Pounds</i>	<i>1,000 Pounds</i>	<i>1,000 Pounds</i>	<i>Percent</i>	<i>Percent</i>	<i>1,000 Lbs</i>
Fresh Fruit						
Apples						
Regular Storage	139,720	233,516	95,689	68	41	
Controlled Atmosphere	1,751,456	2,369,296	1,764,024	101	74	
Total	1,891,176	2,602,812	1,859,713	98	71	844
Pears						
Bartlett	2,386					
Other Varieties	102,591	112,537	54,968	54	49	
Total	104,977	112,537	54,968	52	49	6
Nuts						
Shelled						
Peanuts	591,111	496,615	513,192	87	103	
Pecans	36,427	44,609	51,771	142	116	
Other Shelled	169,420	178,425	159,092	94	89	
Total	796,958	719,649	724,055	91	101	331,772
In-Shell						
Peanuts	25,565	23,747	18,687	73	79	
Pecans	233,970	150,389	121,134	52	81	
Other In-Shell	5,887	16,054	13,852	235	86	
Total	265,422	190,190	153,673	58	81	42,476
Dairy Products						
Butter, Total	126,865	90,448	104,613	82	116	93,534
(Government Owned)	229	717	624	272	87	
Natural Cheese						
American, Total	569,699	505,237	512,534	90	101	
(Government Owned)	24	1,955	1,986		102	
Swiss	15,041	12,660	12,201	81	96	
Other Natural Cheese	209,287	198,447	196,084	94	99	
Total	794,027	716,344	720,819	91	101	416,835
Eggs, Frozen						
Whites	2,020	2,242	3,298	163	147	
Yolks	658	879	599	91	68	
Whole & Mixed	8,898	9,851	10,647	120	108	
Unclassified	1,197	1,629	2,084	174	128	
Total	12,773	14,601	16,628	130	114	16,265
Frozen Poultry						
Chicken						
Broilers (Whole)	35,024	15,585	13,532	39	87	
Hens	8,762	6,486	7,344	84	113	
Other Chicken	811,977	620,881	633,913	78	102	
Total	855,763	642,952	654,789	77	102	
Turkey						
Whole Turkey	207,237	199,625	223,928	108	112	
Other Turkey	209,629	155,778	171,176	82	110	
Total	416,866	355,403	395,104	95	111	
Ducks	4,302	4,883	6,158	143	126	
Total	1,276,931	1,003,238	1,056,051	83	105	974,970

**Stocks in Cold Storage: By Commodity,
United States, April 2001 (Continued)**

Commodity	Stocks in All Warehouses			Percent of		Public Warehouse Stocks
	Apr 30, 2000	Mar 31, 2001	Apr 30, 2001	Apr 2000	Mar 2001	Apr 30, 2001
	<i>1,000 Pounds</i>	<i>1,000 Pounds</i>	<i>1,000 Pounds</i>	<i>Percent</i>	<i>Percent</i>	<i>1,000 Lbs</i>
Frozen Fruit						
Apples	87,658	70,555	69,689	80	99	
Apricots	4,583	4,540	3,503	76	77	
Blackberries, Total	18,511	17,866	17,094	92	96	
IQF	13,461	11,938	11,094	82	93	
Pails and Tubs	1,360	1,446	1,358	100	94	
Barrels, 400 lbs net	2,098	2,606	2,343	112	90	
Concentrate	1,592	1,876	2,299	144	123	
Blueberries	30,697	63,218	53,180	173	84	
Boysenberries	3,618	3,387	2,904	80	86	
Cherries, Tart (RSP)	78,475	88,595	79,566	101	90	
Cherries, Tart (Juice)	1,491	1,234	1,326	89	107	
Cherries, Sweet	10,333	10,706	9,195	89	86	
Grapes	3,559	3,895	3,152	89	81	
Peaches	36,863	48,511	35,798	97	74	
Raspberries, Black	565	1,174	1,002	177	85	
Raspberries, Red, Total	35,121	32,826	29,592	84	90	
IQF	12,659	12,185	10,980	87	90	
Pails and Tubs	10,225	11,113	10,312	101	93	
Barrels, 400 lbs net	10,578	8,399	7,174	68	85	
Concentrate	1,659	1,129	1,126	68	100	
Strawberries, Total	231,746	207,117	175,284	76	85	
Other Frozen Fruit	474,383	716,384	640,250	135	89	
Total	1,017,603	1,270,008	1,121,535	110	88	625,921
Frozen Juice						
Orange Juice Conc. ¹ (Gallon Equivalent)	1,812,463	1,735,462	1,881,634	104	108	
Other Juice Concentrate	183,151	175,370	190,141			
Total	335,691	309,124	321,843	96	104	
Total	2,148,154	2,044,586	2,203,477	103	108	234,072
Frozen Vegetables						
Asparagus	10,470	9,318	8,757	84	94	
Limas, Fordhook	7,206	8,736	7,825	109	90	
Limas, Baby	35,542	26,555	23,611	66	89	
Green Beans, Reg. Cut	79,225	90,844	73,571	93	81	
Green Beans, Fr. Style	17,847	20,145	14,984	84	74	
Broccoli, Spears	42,607	41,030	37,637	88	92	
Broccoli, Chopped & Cut	121,493	78,051	78,692	65	101	
Brussels Sprouts	20,113	19,677	13,386	67	68	
Carrots, Diced	62,199	99,715	91,291	147	92	
Carrots, Other	161,125	118,215	111,275	69	94	
Cauliflower	51,172	36,682	31,160	61	85	
Corn, Cut	192,997	194,544	168,522	87	87	
Corn, Cob	164,130	148,930	122,260	74	82	
Mixed Vegetables	50,592	41,962	44,714	88	107	
Okra	30,598	32,852	30,398	99	93	
Onion Rings	13,772	7,744	6,644	48	86	
Onions, Other	52,691	36,925	36,545	69	99	
Blackeye Peas	3,144	5,035	4,491	143	89	
Green Peas	132,969	179,626	155,451	117	87	
Peas & Carrots Mixed	7,955	8,078	8,461	106	105	
Spinach	98,119	61,186	90,538	92	148	
Squash, Summer/Zucchini	37,189	27,806	23,493	63	84	
Southern Greens	34,796	29,430	28,573	82	97	
Other Vegetables	264,325	267,798	255,982	97	96	
Total	1,692,276	1,590,884	1,468,261	87	92	985,118

See footnotes at end of table.

--continued

**Stocks in Cold Storage: By Commodity,
United States, April 2001 (Continued)**

Commodity	Stocks in All Warehouses			Percent of		Public Warehouse Stocks
	Apr 30, 2000	Mar 31, 2001	Apr 30, 2001	Apr 2000	Mar 2001	Apr 30, 2001
	<i>1,000 Pounds</i>	<i>1,000 Pounds</i>	<i>1,000 Pounds</i>	<i>Percent</i>	<i>Percent</i>	<i>1,000 Lbs</i>
Potatoes						
French Fries	967,624	998,851	1,024,577	106	103	
Other Frozen	271,744	222,076	247,315	91	111	
Total	1,239,368	1,220,927	1,271,892	103	104	964,578
Meat						
Frozen Beef						
Boneless ²	342,969	280,364	269,770	79	96	
Beef Cuts ³	53,159	52,234	50,204	94	96	
Total	396,128	332,598	319,974	81	96	300,690
(Government Owned)	4,089	3,085	3,153	77	102	
Frozen Pork						
Picnics, Bone-in	9,881	10,695	9,936	101	93	
Hams, Total	92,356	63,804	66,524	72	104	60,546
Bone-in	48,604	24,144	29,307	60	121	27,721
Boneless ⁴	43,752	39,660	37,217	85	94	32,825
Bellies	63,461	45,440	43,777	69	96	
Loins, Total	28,179	30,082	35,014	124	116	32,021
Bone-in	13,124	14,479	16,073	122	111	
Boneless ⁵	15,055	15,603	18,941	126	121	
Ribs ⁶	64,903	63,912	58,577	90	92	
Butts	9,968	13,532	13,420	135	99	
Trimmings ⁷	56,169	55,187	59,601	106	108	
Other ⁸	99,700	78,412	84,105	84	107	
Variety Meats ⁹	72,146	49,914	50,325	70	101	
Unclassified ¹⁰	35,300	20,903	19,939	56	95	
Total	532,063	431,881	441,218	83	102	385,834
(Government Owned)	6,221	8,154	7,174	115	88	
Other						
Veal	3,872	3,816	4,436	115	116	
Lamb & Mutton	13,345	13,729	14,699	110	107	
Total	17,217	17,545	19,135	111	109	18,884
Canned						
Canned Hams	5,440	5,429	6,141	113	113	
Other Canned Meat	464	66	49	11	74	
Total	5,904	5,495	6,190	105	113	4,438
Total	951,312	787,519	786,517	83	100	709,846
Miscellaneous						
Cooler	727,276	695,424	670,383	92	96	431,180
Freezer	2,134,481	2,096,291	2,077,679	97	99	2,001,705
Total	2,861,757	2,791,715	2,748,062	96	98	2,432,885
Commodities						
Stored in Coolers	4,585,740	5,042,451	4,189,801	91	83	1,227,551
Stored in Freezers	10,593,859	10,113,007	10,100,463	95	100	6,601,571
Total	15,179,599	15,155,458	14,290,264	94	94	7,829,122

¹ Adjusted to 42.0 degrees Brix equivalent (9.896 pounds per gallon).

² Includes all boxed boneless beef, such as ground beef, roasts, steaks, loins, strips, rounds, trimmings, etc. Variety meats (edible offal), such as tongues, livers, hearts, kidneys, and other organs removed from slaughtered beef, are included as miscellaneous freezer stocks.

³ Includes all boxed primal beef cuts, bone-in.

⁴ Includes full ham, bone removed and individual muscles separated.

⁵ Includes pork tenderloins.

⁶ Includes spareribs and backribs.

⁷ Includes 42% regular trimmings, 72% special trimmings, boneless picnic meat, jowls, neckbone trimmings, blade, cheek, head, and shank meat, etc. Packaged bacon, sausage, and processed items, such as hot dogs and luncheon meats, are included in miscellaneous cooler or freezer stocks.

⁸ Includes ears, tails, feet, neckbones and snouts.

⁹ Includes tongues, kidneys, livers, stomachs, hearts, chitterlings, salivary glands, and other organs removed from slaughtered hogs.

¹⁰ Includes pork unable to be classified elsewhere in this report.

**Stocks in Cold Storage: By Commodity, Region,
and United States, March 31, 2001**

Commodity	New England	Middle Atlantic	East North Central	West North Central	South Atlantic
	<i>1,000 Pounds</i>	<i>1,000 Pounds</i>	<i>1,000 Pounds</i>	<i>1,000 Pounds</i>	<i>1,000 Pounds</i>
Total Fresh Apples	12,565	267,544	164,026	378	111,737
Nuts					
Shelled					
Peanuts		24	41	30	320,026
Pecans ¹		231			12,245
In-Shell					
Pecans ¹		19			26,067
Dairy Products					
Natural Cheese					
American, Total	22,068	48,366	232,576	94,923	5,453
Other Natural Cheese	379	14,804	106,071	59,832	219
Frozen Poultry					
Broilers (Whole)	67	810	617	496	8,138
Hens	13	106	398	923	3,751
Other Chicken	1,475	26,954	15,884	30,087	162,329
Total	1,555	27,870	16,899	31,506	174,218
Whole Turkeys	3,235	11,240	16,789	36,973	32,139
Other Turkey	266	9,662	15,900	53,985	39,351
Total	3,501	20,902	32,689	90,958	71,490
Ducks		412	4,261	43	12
Total	5,056	49,184	53,849	122,507	245,720
Frozen Fruit					
Apples	36	21,342	34,452	137	481
Blueberries	13,869	4,971	28,523	172	2,344
Cherries, Tart (RSP)	26	6,128	75,583	69	396
Cherries, Sweet		264	7,714	45	3
Peaches	14	2,201	3,757	238	292
Raspberries, Red	121	1,545	578	42	40
Strawberries, Total	87	2,349	3,972	1,286	801
Other Frozen Fruit	102,554	38,526	354,148	58	843

See footnotes at end of table.

--continued

**Stocks in Cold Storage: By Commodity, Region,
and United States, March 31, 2001 (continued)**

Commodity	East South Central	West South Central	Mountain	Pacific	US Total
	<i>1,000 Pounds</i>	<i>1,000 Pounds</i>	<i>1,000 Pounds</i>	<i>1,000 Pounds</i>	<i>1,000 Pounds</i>
Total Fresh Apples		3,499	24,926	2,018,137	2,602,812
Nuts					
Shelled					
Peanuts	51,838	124,225	146	285	496,615
Pecans ¹	1,337	30,466		330	44,609
In-Shell					
Pecans ¹	3,164	121,139			150,389
Dairy Products					
Natural Cheese					
American, Total		583	15,407	85,861	505,237
Other Natural Cheese	155	517	6,357	10,113	198,447
Frozen Poultry					
Broilers (Whole)	581	3,902	371	603	15,585
Hens	668	488	35	104	6,486
Other Chicken	115,736	226,013	2,304	40,099	620,881
Total	116,985	230,403	2,710	40,806	642,952
Whole Turkeys	2,404	49,124	6,416	41,305	199,625
Other Turkey	172	19,728	7,280	9,434	155,778
Total	2,576	68,852	13,696	50,739	355,403
Ducks		25		130	4,883
Total	119,561	299,280	16,406	91,675	1,003,238
Frozen Fruit					
Apples	124	1,555	103	12,325	70,555
Blueberries	148	258	83	12,850	63,218
Cherries, Tart (RSP)	30	56	1,577	4,730	88,595
Cherries, Sweet	2	156	420	2,102	10,706
Peaches	94	499	23	41,393	48,511
Raspberries, Red	100	1,328	11	29,061	32,826
Strawberries, Total	2,650	18,880	314	176,778	207,117
Other Frozen Fruit	510	5,008	3,955	210,782	716,384

See footnotes at end of table.

--continued

**Stocks in Cold Storage: By Commodity, Region,
and United States, March 31, 2001 (continued)**

Commodity	New England	Middle Atlantic	East North Central	West North Central	South Atlantic
	<i>1,000 Pounds</i>	<i>1,000 Pounds</i>	<i>1,000 Pounds</i>	<i>1,000 Pounds</i>	<i>1,000 Pounds</i>
Frozen Juice					
Orange Juice Conc. ²	29		1,132	137	1,660,868
Other Juice Concentrate	57	16,871	8,094	849	133,118
Frozen Vegetables ³					
Asparagus		508	3,245	40	297
Limas, Fordhook		1,429	744	119	1,195
Limas, Baby		5,853	2,470	457	3,583
Green Beans, Reg. Cut		18,708	27,640	893	2,991
Green Beans, Fr. Style		6,997	5,918	73	297
Broccoli, Spears		6,777	2,359	437	1,118
Broccoli, Chopped & Cut		6,355	6,739	2,989	6,342
Brussels Sprouts		2,592	1,561	178	575
Carrots, Diced		9,984	18,659	957	5,827
Carrots, Other		11,069	11,302	632	5,384
Cauliflower		1,895	3,335	1,125	1,125
Corn, Cut		21,689	34,481	9,224	5,733
Corn, Cob		13,770	12,329	10,950	3,042
Mixed Vegetables		4,205	7,316	1,126	2,127
Okra		1,452	809	713	6,697
Onion Rings		467	3,162	1,304	809
Onions, Other		4,637	4,566	403	1,624
Blackeye Peas		169	85	87	3,342
Green Peas		25,506	17,915	5,514	5,155
Peas & Carrots Mixed		1,215	1,057	49	692
Spinach		9,958	2,267	566	4,208
Squash, Summer/Zucchini		4,123	6,254	415	3,648
Southern Greens		4,388	952	54	6,954
Other Vegetables		46,892	30,284	9,503	23,416
Potatoes					
French Fries	26,913	32,895	49,323	118,872	24,589
Other Frozen	4,061	8,905	36,968	8,347	1,663
Meat					
Frozen Beef					
Boneless	1,682	37,050	19,195	87,988	23,680
Beef Cuts	1,121	3,080	9,810	9,365	3,376
Frozen Pork					
Ribs	458	2,185	14,589	31,043	7,459
Trimnings	154	769	10,470	33,257	6,407
Other	2,091	1,364	15,109	32,055	8,251
Other					
Veal	103	1,046	1,070	191	37
Lamb & Mutton	326	3,291	724	4,200	461

See footnotes at end of table.

--continued

**Stocks in Cold Storage: By Commodity, Region,
and United States, March 31, 2001 (continued)**

Commodity	East South Central	West South Central	Mountain	Pacific	US Total
	<i>1,000 Pounds</i>	<i>1,000 Pounds</i>	<i>1,000 Pounds</i>	<i>1,000 Pounds</i>	<i>1,000 Pounds</i>
Frozen Juice					
Orange Juice Concentrate	76	3,702	1,760	67,758	1,735,462
Other Juice Concentrate	790	25,336	260	123,749	309,124
Frozen Vegetables ³					
Asparagus		336	88	4,804	9,318
Limas, Fordhook		197	1	5,051	8,736
Limas, Baby		460	2,176	11,556	26,555
Green Beans, Reg. Cut		915	195	39,502	90,844
Green Beans, Fr. Style		199	123	6,538	20,145
Broccoli, Spears		11,210	130	18,999	41,030
Broccoli, Chopped & Cut		15,674	773	39,179	78,051
Brussels Sprouts		517	6	14,248	19,677
Carrots, Diced		2,148	52	62,088	99,715
Carrots, Other		11,402	848	77,578	118,215
Cauliflower		5,390	146	23,666	36,682
Corn, Cut		1,990	412	121,015	194,544
Corn, Cob		1,333	10,162	97,344	148,930
Mixed Vegetables		3,017	501	23,670	41,962
Okra		22,567		614	32,852
Onion Rings		1,011	746	245	7,744
Onions, Other		1,363	6,069	18,263	36,925
Blackeye Peas		1,136		216	5,035
Green Peas		1,414	13,857	110,265	179,626
Peas & Carrots Mixed		989	23	4,053	8,078
Spinach		17,243	1,226	25,718	61,186
Squash, Summer/Zucchini		1,495	862	11,009	27,806
Southern Greens		16,316		766	29,430
Other Vegetables		35,218	4,813	117,672	267,798
Potatoes					
French Fries	1,158	13,581	211,755	519,765	998,851
Other Frozen	105	4,834	45,859	111,334	222,076
Meat					
Frozen Beef					
Boneless ⁴	2,644	57,402	2,906	47,817	280,364
Beef Cuts ⁵	4,537	8,096	6,265	6,584	52,234
Frozen Pork					
Ribs ⁶	3,057	1,630	17	3,474	63,912
Trimming ⁷	275	3,522	57	276	55,187
Other ⁸	7,947	5,793	296	5,506	78,412
Other					
Veal		88		1,281	3,816
Lamb & Mutton		144	686	3,897	13,729

¹ East North Central combined with South Atlantic. Mountain and West North Central combined with West South Central.

² Middle Atlantic combined with South Atlantic.

³ New England combined with Middle Atlantic. East South Central combined with South Atlantic.

⁴ Includes all boxed boneless beef, such as ground beef, roasts, steaks, loins, strips, rounds, trimmings, etc. Variety meats (edible offal), such as tongues, livers, hearts, kidneys, and other organs removed from slaughtered beef, are included as miscellaneous freezer stocks.

⁵ Includes all boxed primal beef cuts, bone-in.

⁶ Includes spareribs and backribs.

⁷ Includes 42% regular trimmings, 72% special trimmings, boneless picnic meat, jowls, neckbone trimmings, blade, cheek, head, and shank meat, etc. Packaged bacon, sausage, and processed items, such as hot dogs and luncheon meats, are included in miscellaneous cooler or freezer stocks.

⁸ Includes ears, tails, feet, neckbones and snouts.

**Stocks in Cold Storage: By Commodity, Region,
and United States, April 30, 2001**

Commodity	New England	Middle Atlantic	East North Central	West North Central	South Atlantic
	<i>1,000 Pounds</i>	<i>1,000 Pounds</i>	<i>1,000 Pounds</i>	<i>1,000 Pounds</i>	<i>1,000 Pounds</i>
Total Fresh Apples	5,488	186,507	76,560		76,185
Nuts					
Shelled					
Peanuts		24	42	30	336,228
Pecans ¹		221			12,741
In-Shell					
Pecans ¹		29			21,927
Dairy Products					
Natural Cheese					
American, Total	23,490	50,785	231,833	98,487	5,458
Other Natural Cheese	415	14,835	106,069	57,388	196
Frozen Poultry					
Broilers (Whole)	60	464	439	218	7,460
Hens	3	125	427	707	4,326
Other Chicken	1,448	27,986	16,545	30,926	158,923
Total	1,511	28,575	17,411	31,851	170,709
Whole Turkeys	4,892	11,863	23,411	36,413	35,034
Other Turkey	274	10,147	18,823	57,926	45,343
Total	5,166	22,010	42,234	94,339	80,377
Ducks		447	5,558	48	14
Total	6,677	51,032	65,203	126,238	251,100
Frozen Fruit					
Apples	28	21,440	34,245	117	481
Blueberries	12,863	3,728	23,441	153	1,923
Cherries, Tart (RSP)	23	4,565	69,284	58	343
Cherries, Sweet		322	6,545	39	3
Peaches	11	2,012	3,088	206	242
Raspberries, Red	121	1,312	728	49	43
Strawberries, Total	75	2,213	4,177	1,144	950
Other Frozen Fruit	85,329	30,262	319,247	97	1,000

See footnotes at end of table.

--continued

**Stocks in Cold Storage: By Commodity, Region,
and United States, April 30, 2001 (continued)**

Commodity	East South Central	West South Central	Mountain	Pacific	US Total
	<i>1,000 Pounds</i>	<i>1,000 Pounds</i>	<i>1,000 Pounds</i>	<i>1,000 Pounds</i>	<i>1,000 Pounds</i>
Total Fresh Apples		3,994	9,546	1,501,433	1,859,713
Nuts					
Shelled					
Peanuts	52,862	123,583	154	269	513,192
Pecans ¹	1,419	37,067		323	51,771
In-Shell					
Pecans ¹	2,607	96,571			121,134
Dairy Products					
Natural Cheese					
American, Total		592	14,932	86,957	512,534
Other Natural Cheese	156	525	6,309	10,191	196,084
Frozen Poultry					
Broilers (Whole)	541	3,253	411	686	13,532
Hens	860	738	36	122	7,344
Other Chicken	116,532	239,086	2,516	39,951	633,913
Total	117,933	243,077	2,963	40,759	654,789
Whole Turkeys	3,521	56,132	7,021	45,641	223,928
Other Turkey	190	21,092	7,434	9,947	171,176
Total	3,711	77,224	14,455	55,588	395,104
Ducks		28		63	6,158
Total	121,644	320,329	17,418	96,410	1,056,051
Frozen Fruit					
Apples	110	1,298	102	11,868	69,689
Blueberries	133	206	69	10,664	53,180
Cherries, Tart (RSP)	28	50	1,408	3,807	79,566
Cherries, Sweet	2	127	288	1,869	9,195
Peaches	73	735	23	29,408	35,798
Raspberries, Red	91	1,067	8	26,173	29,592
Strawberries, Total	2,796	16,521	306	147,102	175,284
Other Frozen Fruit	467	3,880	6,113	193,855	640,250

See footnotes at end of table.

--continued

**Stocks in Cold Storage: By Commodity, Region,
and United States, April 30, 2001 (continued)**

Commodity	New England	Middle Atlantic	East North Central	West North Central	South Atlantic
	<i>1,000 Pounds</i>	<i>1,000 Pounds</i>	<i>1,000 Pounds</i>	<i>1,000 Pounds</i>	<i>1,000 Pounds</i>
Frozen Juice					
Orange Juice Conc. ²	28		1,217	128	1,805,670
Other Juice Concentrate	54	15,162	8,887	1,283	143,315
Frozen Vegetables ³					
Asparagus		366	2,980	12	294
Limas, Fordhook		1,197	739	98	1,221
Limas, Baby		5,434	2,388	391	3,863
Green Beans, Reg. Cut		15,266	24,027	883	2,506
Green Beans, Fr. Style		4,662	4,547	55	332
Broccoli, Spears		6,413	2,795	330	1,034
Broccoli, Chopped & Cut		6,284	7,042	2,760	6,832
Brussels Sprouts		2,344	1,540	273	624
Carrots, Diced		10,752	16,382	908	6,094
Carrots, Other		12,629	11,463	951	4,858
Cauliflower		2,158	2,567	1,040	998
Corn, Cut		20,289	34,951	9,071	5,411
Corn, Cob		13,745	12,146	10,339	3,050
Mixed Vegetables		5,179	7,032	1,185	2,389
Okra		1,363	727	661	6,767
Onion Rings		387	2,695	1,186	564
Onions, Other		5,544	4,046	357	1,652
Blackeye Peas		182	85	18	2,934
Green Peas		21,314	17,042	5,022	5,643
Peas & Carrots Mixed		1,246	952	103	688
Spinach		15,435	3,362	553	5,658
Squash, Summer/Zucchini		3,936	4,834	320	2,870
Southern Greens		3,980	913	14	5,797
Other Vegetables		46,093	28,428	8,998	21,578
Potatoes					
French Fries	26,414	30,205	49,082	109,779	24,884
Other Frozen	3,823	9,277	36,955	9,005	2,241
Meat					
Frozen Beef					
Boneless ⁴	1,681	30,973	20,769	83,748	23,354
Beef Cuts ⁵	840	1,989	9,465	9,263	3,401
Frozen Pork					
Ribs ⁶	415	2,088	14,461	26,934	6,760
Trimmings ⁷	276	841	10,187	37,415	6,262
Other ⁸	2,232	1,466	16,079	36,039	8,939
Other					
Veal	103	914	1,804	191	67
Lamb & Mutton	347	3,640	840	4,493	492

See footnotes at end of table.

--continued

**Stocks in Cold Storage: By Commodity, Region,
and United States, April 30, 2001 (continued)**

Commodity	East South Central	West South Central	Mountain	Pacific	US Total
	<i>1,000 Pounds</i>	<i>1,000 Pounds</i>	<i>1,000 Pounds</i>	<i>1,000 Pounds</i>	<i>1,000 Pounds</i>
Frozen Juice					
Orange Juice Concentrate	74	3,518	1,910	69,089	1,881,634
Other Juice Concentrate	635	26,405	266	125,836	321,843
Frozen Vegetables ³					
Asparagus		308	60	4,737	8,757
Limas, Fordhook		327	1	4,242	7,825
Limas, Baby		424	1,970	9,141	23,611
Green Beans, Reg. Cut		924	168	29,797	73,571
Green Beans, Fr. Style		202	129	5,057	14,984
Broccoli, Spears		10,708	68	16,289	37,637
Broccoli, Chopped & Cut		16,815	671	38,288	78,692
Brussels Sprouts		447	4	8,154	13,386
Carrots, Diced		2,469	32	54,654	91,291
Carrots, Other		13,552	750	67,072	111,275
Cauliflower		4,161	136	20,100	31,160
Corn, Cut		2,201	408	96,191	168,522
Corn, Cob		1,437	7,994	73,549	122,260
Mixed Vegetables		3,252	487	25,190	44,714
Okra		20,266	1	613	30,398
Onion Rings		933	623	256	6,644
Onions, Other		2,112	5,997	16,837	36,545
Blackeye Peas		1,084		188	4,491
Green Peas		1,471	12,046	92,913	155,451
Peas & Carrots Mixed		994	30	4,448	8,461
Spinach		21,666	1,133	42,731	90,538
Squash, Summer/Zucchini		1,669	824	9,040	23,493
Southern Greens		17,157		712	28,573
Other Vegetables		34,532	5,061	111,292	255,982
Potatoes					
French Fries	969	11,726	227,527	543,991	1,024,577
Other Frozen	107	4,956	51,796	129,155	247,315
Meat					
Frozen Beef					
Boneless ⁴	4,497	54,560	2,794	47,394	269,770
Beef Cuts ⁵	4,181	7,470	7,316	6,279	50,204
Frozen Pork					
Ribs ⁶	3,202	1,785	37	2,895	58,577
Trimmings ⁷	300	4,022	64	234	59,601
Other ⁸	8,509	5,915	194	4,732	84,105
Other					
Veal		102		1,255	4,436
Lamb & Mutton		169	648	4,070	14,699

¹ East North Central combined with South Atlantic. Mountain and West North Central Combined with West South Central.

² Middle Atlantic combined with South Atlantic.

³ New England combined with Middle Atlantic. East South Central combined with South Atlantic.

⁴ Includes all boxed boneless beef, such as ground beef, roasts, steaks, loins, strips, rounds, trimmings, etc. Variety meats (edible offal), such as tongues, livers, hearts, kidneys, and other organs removed from slaughtered beef, are included as miscellaneous freezer stocks.

⁵ Includes all boxed primal beef cuts, bone-in.

⁶ Includes spareribs and backribs.

⁷ Includes 42% regular trimmings, 72% special trimmings, boneless picnic meat, jowls, neckbone trimmings, blade, cheek, head, and shank meat, etc. Packaged bacon, sausage, and processed items, such as hot dogs and luncheon meats, are included in miscellaneous cooler or freezer stocks.

⁸ Includes ears, tails, feet, neckbones and snouts.

**Public General Warehouses: Cold Storage Space Occupied
by Region and United States, April 2001**

Region	Cooler				Freezer			
	Usable Space	Usable Space Occupied			Usable Space	Usable Space Occupied		
	Apr 30 2001	Apr 30 2000	Mar 31 2001	Apr 30 2001	Apr 30 2001	Apr 30 2000	Mar 31 2001	Apr 30 2001
	<i>1,000 Cu Ft</i>	<i>Percent</i>	<i>Percent</i>	<i>Percent</i>	<i>1,000 Cu Ft</i>	<i>Percent</i>	<i>Percent</i>	<i>Percent</i>
New England	2,166	59	70	74	19,586	82	57	58
Middle Atlantic	35,380	50	59	61	109,118	75	67	67
E. North Central	54,688	36	49	51	200,016	49	42	45
W. North Central	43,440	29	33	32	147,304	56	54	53
South Atlantic	47,839	46	34	32	184,511	57	50	49
E. South Central	9,315	43	48	52	71,042	37	38	34
W. South Central	21,003	33	27	29	134,302	65	53	52
Mountain	7,749	46	33	34	53,312	59	47	49
Pacific	43,289	29	31	35	283,854	61	60	58
US	264,869	38	40	41	1,203,045	58	53	52

Cold Storage Regions



**Apples in Cold Storage: By State
and United States, April 2001**

State	All Warehouses		
	Apr 30, 2000	Mar 31, 2001	Apr 30, 2001
	<i>1,000 Pounds</i>	<i>1,000 Pounds</i>	<i>1,000 Pounds</i>
CA	28,941	23,739	11,395
MI	127,684	160,481	74,928
N ENG	19,700	12,565	5,488
NY	133,728	157,164	112,392
OH	5,995	2,885	1,595
OR	17,082	16,659	11,680
PA	87,804	110,227	74,039
VA	70,899	79,013	60,303
WA	1,354,315	1,977,739	1,478,359
WV	19,671	20,654	10,560
Other States	25,357	41,686	18,974
US	1,891,176	2,602,812	1,859,713

Survey Procedures: Questionnaires are mailed about the 24th of each month to all operators on the list of approximately 1,400 public and private cold storage warehouses. In addition, apple data are obtained from special surveys and other sources (State Departments of Agriculture, U.S. Apple Association, etc.). All survey data represent stocks as of the end of the month.

Data are collected from warehouses artificially cooled to a temperature of 50 degrees Fahrenheit or lower, and whose food products are normally stored for 30 days or more. All food items in these facilities are reported regardless of the number of days stored at the time of the report. Also included are specialized storage facilities meeting the 30 day requirement, such as fruit houses, dairy manufacturing plants, frozen fruit, fruit juice, and vegetable processors, and poultry and meat packing plants. Excluded are stocks in space maintained by wholesalers, jobbers, distributors, chain stores, locker plants containing individual lockers, meat packer branch houses, and frozen food processors whose entire inventories are turned over more than once a month.

Estimating Procedures: Data for reporting firms are added to estimates for non-reporting firms to obtain regional and National totals. Estimates for non-reporting firms are obtained by multiplying the previous month's figure by a percent change from the previous month. The percent change is calculated for each item from totals of the current and previous month summed from firms that reported both months.

Revision Policy: Data are revised the following month based on late reports or corrected data. Final figures are published in the annual summary in February of the following year.

Reliability: Reports are received from 900 firms each month which represent about 70 percent of the total capacity. Firms that are not on the list or firms who have never reported are not represented in the data. Monthly data can vary due to different firms reporting month to month. Survey data are also subject to non-sampling errors such as omissions and mistakes in reporting and in processing the data. While these errors cannot be measured directly, they are minimized by carefully reviewing all reported data for consistency and reasonableness.

The next "Cold Storage" report will be released at 3 p.m. ET on June 20, 2001.

The United States Department of Agriculture (USDA) prohibits discrimination in all its programs on the basis of race, color, national origin, gender, religion, age, disability, political beliefs, sexual orientation, and marital or family status. (Not all prohibited bases apply to all programs.) Persons with disabilities who require alternative means for communication of program information (braille, large print, audiotape, etc.) should contact the USDA's TARGET Center at 202-720-2600 (voice and TDD).

To file a complaint of discrimination, write USDA, Director, Office of Civil Rights, Room 326-W, Whitten Building, 1400 Independence Avenue, SW, Washington, D.C., 20250-9410, or call 202-720-5964 (voice or TDD). USDA is an equal opportunity provider and employer.

ACCESS TO REPORTS!!

For your convenience, there are several ways to obtain NASS reports, data products, and services:

INTERNET ACCESS

All NASS reports are available free of charge on the worldwide Internet. For access, connect to the Internet and go to the NASS Home Page at: <http://www.usda.gov/nass/>. Select "Today's Reports" or Publications and then Reports by Calendar or Publications and then Search, by Title or Subject.

E-MAIL SUBSCRIPTION

There are two options for subscribing via e-mail. All NASS reports are available by subscription free of charge direct to your e-mail address. 1) Starting with the NASS Home Page at <http://www.usda.gov/nass/>, click on **Publications**, then click on the **Subscribe by E-mail** button which takes you to the page describing e-mail delivery of reports. Finally, click on **Go to the Subscription Page** and follow the instructions. 2) If you do NOT have Internet access, send an e-mail message to: usda-reports@usda.mannlib.cornell.edu. In the body of the message type the word: **list**.

AUTOFAX ACCESS

NASSFax service is available for some reports from your fax machine. Please call 202-720-2000, using the handset attached to your fax. Respond to the voice prompts. Document 0411 is a list of available reports.

PRINTED REPORTS OR DATA PRODUCTS

CALL OUR TOLL-FREE ORDER DESK: 800-999-6779 (U.S. and Canada)
Other areas, please call 703-834-0125 FAX: 703-834-0110
(Visa, MasterCard, check, or money order acceptable for payment.)

ASSISTANCE

For **assistance** with general agricultural statistics or further information about NASS or its products or services, contact the **Agricultural Statistics Hotline** at **800-727-9540**, 7:30 a.m. to 4:00 p.m. ET, or e-mail: nass@nass.usda.gov.