



Cold Storage

Released June 20, 2001, by the National Agricultural Statistics Service (NASS), Agricultural Statistics Board, U.S. Department of Agriculture. For information on "Cold Storage" call Linda Simpson at (202) 720-8784, office hours 7:00 a.m. to 4:30 p.m. ET.

HIGHLIGHTS

Frozen food stocks in refrigerated warehouses on May 31, 2001, were greater than year earlier levels for orange juice and potatoes. Cooler stocks of apples were also higher than a year earlier.

Butter stocks were 26 percent above April 2001 but were 2 percent below a year ago.

Total red meat supplies in freezers were 1 percent above April 2001 but were 19 percent below May 2000. Frozen pork stocks were 2 percent below last month and were 21 percent below last year. Stocks of pork bellies increased 5 percent from last month but were 33 percent below May 2000 stocks.

Total frozen poultry supplies on May 31, 2001, were up 7 percent from last month but were 14 percent below last year's level. Total stocks of chicken were 2 percent above last month but were 20 percent below last year. Total pounds of turkey in freezers increased 16 percent from last month but were 6 percent below last year.

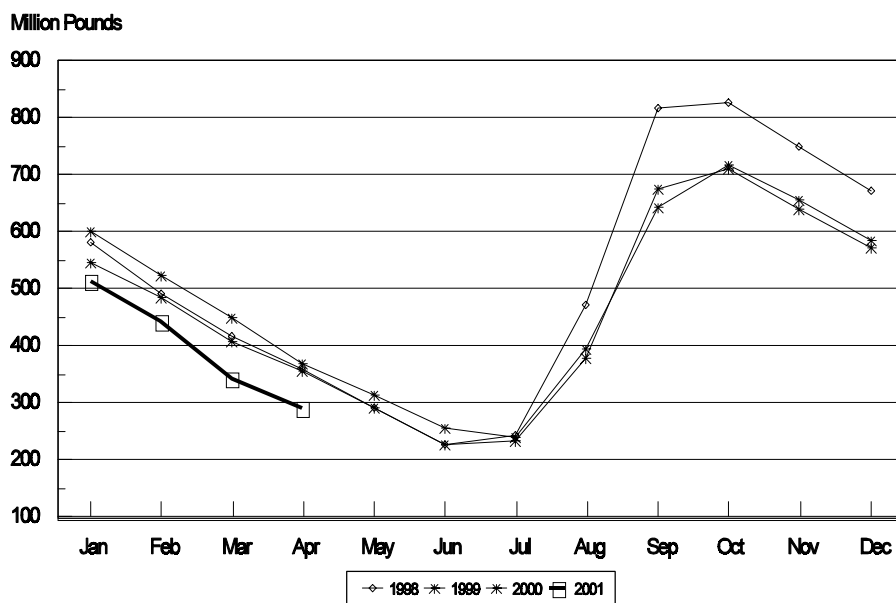
Public cooler occupancy on May 31, 2001, was at 40 percent of capacity, up 1 point from last year. Public freezer occupancy, at 51 percent, was down 7 percentage points from last year.

This page is intentionally blank.

Table of Contents

	Page
Stocks in Cold Storage: By Commodity, United States, May 2001	4
Stocks in Cold Storage: By Commodity, Region, and United States, April 30, 2001	8
Stocks in Cold Storage: By Commodity, Region, and United States, May 31, 2001	12
Public General Warehouses: Cold Storage Space Occupied by Region and United States, May 2001	16
Survey and Estimating Procedures, Revision Policy and Reliability	17

**Total Frozen Corn-United States
Cold Storage Stocks, 1998-2001**



**Stocks in Cold Storage: By Commodity,
United States, May 2001**

Commodity	Stocks in All Warehouses			Percent of		Public Warehouse Stocks
	May 31, 2000	Apr 30, 2001	May 31, 2001	May 2000	Apr 2001	May 31, 2001
	<i>1,000 Pounds</i>	<i>1,000 Pounds</i>	<i>1,000 Pounds</i>	<i>Percent</i>	<i>Percent</i>	<i>1,000 Lbs</i>
Fresh Fruit						
Apples						
Regular Storage	63,623	101,138	53,623	84	53	
Controlled Atmosphere	1,228,883	1,789,432	1,284,130	104	72	
Total	1,292,506	1,890,570	1,337,753	104	71	566
Pears						
Bartlett						
Other Varieties	69,789	55,357	17,587	25	32	
Total	69,789	55,357	17,587	25	32	23
Nuts						
Shelled						
Peanuts	592,012	516,285	569,936	96	110	
Pecans	36,650	51,491	55,573	152	108	
Other Shelled	156,897	159,139	157,033	100	99	
Total	785,559	726,915	782,542	100	108	377,587
In-Shell						
Peanuts	29,213	20,063	22,330	76	111	
Pecans	211,479	121,101	103,351	49	85	
Other In-Shell	8,183	13,935	12,659	155	91	
Total	248,875	155,099	138,340	56	89	33,838
Dairy Products						
Butter, Total	138,187	107,568	135,791	98	126	118,355
(Government Owned)	489	623	653	134	105	
Natural Cheese						
American, Total	578,379	511,122	504,018	87	99	
(Government Owned)	52	1,986	1,741		88	
Swiss	15,538	12,340	12,223	79	99	
Other Natural Cheese	217,532	196,474	211,796	97	108	
Total	811,449	719,936	728,037	90	101	423,116
Eggs, Frozen						
Whites	2,270	3,298	3,059	135	93	
Yolks	706	493	748	106	152	
Whole & Mixed	9,321	10,015	10,245	110	102	
Unclassified	1,237	2,078	2,347	190	113	
Total	13,534	15,884	16,399	121	103	15,930
Frozen Poultry						
Chicken						
Broilers, Fryers						
Roasters (Whole)	41,091	13,639	15,736	38	115	
Hens, Mature Chickens	9,553	7,343	10,278	108	140	
Other	779,501	633,401	640,846	82	101	
Total Chicken	830,145	654,383	666,860	80	102	

See footnotes at end of table.

--continued

**Stocks in Cold Storage: By Commodity,
United States, May 2001**

Commodity	Stocks in All Warehouses			Percent of		Public Warehouse Stocks
	May 31, 2000	Apr 30, 2001	May 31, 2001	May 2000	Apr 2001	May 31, 2001
	<i>1,000 Pounds</i>	<i>1,000 Pounds</i>	<i>1,000 Pounds</i>	<i>Percent</i>	<i>Percent</i>	<i>1,000 Lbs</i>
Turkeys						
Whole Turkeys	254,834	226,017	272,295	107	120	
Other Turkey	225,436	166,589	180,299	80	108	
Total Turkey	480,270	392,606	452,594	94	116	
Ducks	4,718	6,120	7,047	149	115	
Total Poultry	1,315,133	1,053,109	1,126,501	86	107	916,928
Frozen Fruit						
Apples	83,407	69,609	72,423	87	104	
Apricots	3,806	3,500	3,083	81	88	
Blackberries, Total	12,135	16,363	13,693	113	84	
IQF	7,830	11,078	9,342	119	84	
Pails and Tubs	1,214	1,367	1,120	92	82	
Barrels, 400 lbs net	1,568	2,343	1,599	102	68	
Concentrate	1,523	1,575	1,632	107	104	
Blueberries	24,137	53,932	46,443	192	86	
Boysenberries	3,202	2,904	2,771	87	95	
Cherries, Tart (RSP)	66,628	78,721	66,031	99	84	
Cherries, Tart (Juice)	1,113	1,283	1,078	97	84	
Cherries, Sweet	9,958	9,181	8,906	89	97	
Grapes	3,478	3,152	4,201	121	133	
Peaches	29,815	35,842	29,210	98	81	
Raspberries, Black	556	1,002	908	163	91	
Raspberries, Red, Total	30,047	29,771	24,697	82	83	
IQF	10,310	11,332	10,018	97	88	
Pails and Tubs	9,414	10,139	8,030	85	79	
Barrels, 400 lbs net	8,762	7,174	5,716	65	80	
Concentrate	1,561	1,126	933	60	83	
Strawberries, Total	341,777	179,841	243,713	71	136	
Other Frozen Fruit	401,117	636,114	489,462	122	77	
Total	1,011,176	1,121,215	1,006,619	100	90	606,940
Frozen Juice						
Orange Juice Conc. ¹	1,965,578	1,880,408	2,031,431	103	108	
(Gallon Equivalent)	198,623	190,017	205,278			
Other Juice Concentrate	334,363	330,441	309,624	93	94	
Total	2,299,941	2,210,849	2,341,055	102	106	254,520

See footnotes at end of table.

--continued

**Stocks in Cold Storage: By Commodity,
United States, May 2001**

Commodity	Stocks in All Warehouses			Percent of		Public Warehouse Stocks
	May 31, 2000	Apr 30, 2001	May 31, 2001	May 2000	Apr 2001	May 31, 2001
	<i>1,000 Pounds</i>	<i>1,000 Pounds</i>	<i>1,000 Pounds</i>	<i>Percent</i>	<i>Percent</i>	<i>1,000 Lbs</i>
Frozen Vegetables						
Asparagus	12,559	8,796	10,390	83	118	
Limas, Fordhook	5,398	8,061	6,814	126	85	
Limas, Baby	31,832	23,476	20,505	64	87	
Green Beans, Reg. Cut	63,750	73,172	58,777	92	80	
Green Beans, Fr. Style	16,909	12,658	10,811	64	85	
Broccoli, Spears	37,269	38,209	36,138	97	95	
Broccoli, Chopped & Cut	105,659	79,203	80,323	76	101	
Brussels Sprouts	16,380	13,621	12,267	75	90	
Carrots, Diced	55,342	87,824	75,573	137	86	
Carrots, Other	146,795	112,844	102,007	69	90	
Cauliflower	42,431	31,099	28,439	67	91	
Corn, Cut	157,400	160,573	129,212	82	80	
Corn, Cob	134,916	128,176	102,942	76	80	
Mixed Vegetables	50,201	46,115	48,723	97	106	
Okra	42,284	30,398	30,549	72	100	
Onion Rings	13,357	6,429	7,308	55	114	
Onions, Other	55,340	36,503	38,765	70	106	
Blackeye Peas	2,639	4,491	3,769	143	84	
Green Peas	121,547	154,378	131,654	108	85	
Peas & Carrots Mixed	8,118	8,695	8,299	102	95	
Spinach	106,026	90,766	99,399	94	110	
Squash, Summer/Zucchini	38,744	23,608	25,738	66	109	
Southern Greens	32,983	28,573	26,652	81	93	
Other Vegetables	243,638	248,164	237,029	97	96	
Total	1,541,517	1,455,832	1,332,083	86	91	926,997
Potatoes						
French Fries	986,652	1,032,416	1,010,990	102	98	
Other Frozen	263,711	247,987	252,639	96	102	
Total	1,250,363	1,280,403	1,263,629	101	99	956,577

See footnotes at end of table.

--continued

**Stocks in Cold Storage: By Commodity,
United States, May 2001 (Continued)**

Commodity	Stocks in All Warehouses			Percent of		Public Warehouse Stocks
	May 31, 2000	Apr 30, 2001	May 31, 2001	May 2000	Apr 2001	May 31, 2001
	<i>1,000 Pounds</i>	<i>1,000 Pounds</i>	<i>1,000 Pounds</i>	<i>Percent</i>	<i>Percent</i>	<i>1,000 Lbs</i>
Meat						
Frozen Beef						
Boneless ²	347,787	270,552	282,353	81	104	
Beef Cuts ³	53,302	44,792	47,588	89	106	
Total	401,089	315,344	329,941	82	105	310,200
(Government Owned)	2,423	3,256	2,190	90	67	
Frozen Pork						
Picnics, Bone-in	9,670	9,901	10,329	107	104	
Hams, Total	105,331	68,710	81,832	78	119	75,595
Bone-in	55,435	29,300	34,216	62	117	32,628
Boneless ⁴	49,896	39,410	47,616	95	121	42,967
Bellies	68,292	43,878	46,004	67	105	
Loins, Total	27,769	33,201	27,712	100	83	25,543
Bone-in	13,100	14,805	14,363	110	97	
Boneless ⁵	14,669	18,396	13,349	91	73	
Ribs ⁶	52,967	56,154	45,197	85	80	
Butts	11,763	13,180	9,969	85	76	
Trimmings ⁷	48,897	57,074	54,320	111	95	
Other ⁸	99,828	81,774	75,495	76	92	
Variety Meats ⁹	73,548	48,995	50,042	68	102	
Unclassified ¹⁰	39,799	19,737	21,470	54	109	
Total	537,864	432,604	422,370	79	98	367,835
(Government Owned)	4,650	7,129	6,542	141	92	
Other						
Veal	4,276	3,716	3,045	71	82	
Lamb & Mutton	13,137	13,551	14,563	111	107	
Total	17,413	17,267	17,608	101	102	17,408
Canned						
Canned Hams	6,383	6,141	6,812	107	111	
Other Canned Meat	758	49	318	42	649	
Total	7,141	6,190	7,130	100	115	5,067
Total	963,507	771,405	777,049	81	101	700,510
Miscellaneous						
Cooler	637,692	671,571	695,736	109	104	364,601
Freezer	2,101,114	2,081,727	2,080,443	99	100	1,983,648
Total	2,738,806	2,753,298	2,776,179	101	101	2,348,249
Commodities						
Stored in Coolers	3,853,011	4,241,239	3,723,684	97	88	1,318,787
Stored in Freezers	10,627,331	9,852,760	9,919,638	93	101	6,475,338
Total	14,480,342	14,093,999	13,643,322	94	97	7,794,125

¹ Adjusted to 42.0 degrees Brix equivalent (9.896 pounds per gallon).

² Includes all boxed boneless beef, such as ground beef, roasts, steaks, loins, strips, rounds, trimmings, etc. Variety meats (edible offal), such as tongues, livers, hearts, kidneys, and other organs removed from slaughtered beef, are included as miscellaneous freezer stocks.

³ Includes all boxed primal beef cuts, bone-in.

⁴ Includes full ham, bone removed and individual muscles separated.

⁵ Includes pork tenderloins.

⁶ Includes spareribs and backribs.

⁷ Includes 42% regular trimmings, 72% special trimmings, boneless picnic meat, jowls, neckbone trimmings, blade, cheek, head, and shank meat, etc. Packaged bacon, sausage, and processed items, such as hot dogs and luncheon meats, are included in miscellaneous cooler or freezer stocks.

⁸ Includes ears, tails, feet, neckbones and snouts.

⁹ Includes tongues, kidneys, livers, stomachs, hearts, chitterlings, salivary glands, and other organs removed from slaughtered hogs.

¹⁰ Includes product unable to be classified elsewhere in this report.

**Stocks in Cold Storage: By Commodity, Region,
and United States, April 30, 2001**

Commodity	New England	Middle Atlantic	East North Central	West North Central	South Atlantic
	<i>1,000 Pounds</i>	<i>1,000 Pounds</i>	<i>1,000 Pounds</i>	<i>1,000 Pounds</i>	<i>1,000 Pounds</i>
Total Fresh Apples	5,488	187,704	106,220		76,185
Nuts					
Shelled					
Peanuts		24	42	30	339,594
Pecans ¹		221			12,692
In-Shell					
Pecans ¹		29			22,004
Dairy Products					
Natural Cheese					
American, Total	23,490	53,785	229,897	99,197	6,235
Other Natural Cheese	415	17,130	105,744	56,627	196
Frozen Poultry					
Chicken					
Broilers, Fryers					
Roasters (Whole)	60	464	439	240	7,460
Hens, Mature Chickens	3	125	427	707	4,326
Other	1,448	27,254	16,423	30,160	158,589
Total Chicken	1,511	27,843	17,289	31,107	170,375
Turkeys					
Whole Turkeys	4,892	11,863	23,495	38,301	34,514
Other Turkey	274	10,147	18,755	56,683	41,970
Total Turkey	5,166	22,010	42,250	94,984	76,484
Ducks		447	5,520	48	14
Total Poultry	6,677	50,300	65,059	126,139	246,873
Frozen Fruit					
Apples	28	21,440	34,245	117	481
Blueberries	12,863	3,728	24,181	152	1,923
Cherries, Tart (RSP)	23	4,565	68,465	58	343
Cherries, Sweet		322	6,514	38	3
Peaches	11	2,012	3,112	206	242
Raspberries, Red	121	1,312	910	49	43
Strawberries, Total	75	2,213	4,286	1,139	950
Other Frozen Fruit	85,329	30,262	315,129	106	1,000

See footnotes at end of table.

--continued

**Stocks in Cold Storage: By Commodity, Region,
and United States, April 30, 2001 (continued)**

Commodity	East South Central	West South Central	Mountain	Pacific	US Total
	<i>1,000 Pounds</i>	<i>1,000 Pounds</i>	<i>1,000 Pounds</i>	<i>1,000 Pounds</i>	<i>1,000 Pounds</i>
Total Fresh Apples		3,994	9,546	1,501,433	1,890,570
Nuts					
Shelled					
Peanuts	52,568	123,617	143	267	516,285
Pecans ¹	1,375	36,879		324	51,491
In-Shell					
Pecans ¹	2,607	96,461			121,101
Dairy Products					
Natural Cheese					
American, Total		529	11,555	86,434	511,122
Other Natural Cheese	156	530	5,446	10,230	196,474
Frozen Poultry					
Chicken					
Broilers, Fryers					
Roasters (Whole)	541	3,253	419	763	13,639
Hens, Mature Chickens	860	738	35	122	7,343
Other	116,249	240,126	2,563	40,589	633,401
Total Chicken	117,650	244,117	3,017	41,474	654,383
Turkeys					
Whole Turkeys	3,652	56,700	6,960	45,640	226,017
Other Turkey	190	21,114	7,408	10,048	166,589
Total Turkey	3,842	77,814	14,368	55,688	392,606
Ducks		28		63	6,120
Total Poultry	121,492	321,959	17,385	97,225	1,053,109
Frozen Fruit					
Apples	110	1,218	102	11,868	69,609
Blueberries	144	198	79	10,664	53,932
Cherries, Tart (RSP)	28	55	1,377	3,807	78,721
Cherries, Sweet	2	144	289	1,869	9,181
Peaches	65	763	23	29,408	35,842
Raspberries, Red	97	1,068	7	26,164	29,771
Strawberries, Total	2,796	16,536	306	151,540	179,841
Other Frozen Fruit	418	3,871	6,113	193,886	636,114

See footnotes at end of table.

--continued

**Stocks in Cold Storage: By Commodity, Region,
and United States, April 30, 2001 (continued)**

Commodity	New England	Middle Atlantic	East North Central	West North Central	South Atlantic
	<i>1,000 Pounds</i>	<i>1,000 Pounds</i>	<i>1,000 Pounds</i>	<i>1,000 Pounds</i>	<i>1,000 Pounds</i>
Frozen Juice					
Orange Juice Conc. ²	28		1,179	117	1,804,508
Other Juice Concentrate	54	15,162	15,808	1,279	144,981
Frozen Vegetables ³					
Asparagus		366	3,019	12	294
Limas, Fordhook		1,197	975	98	1,221
Limas, Baby		5,434	2,273	388	3,863
Green Beans, Reg. Cut		15,266	22,495	877	2,506
Green Beans, Fr. Style		4,662	2,157	55	332
Broccoli, Spears		6,413	3,349	333	1,034
Broccoli, Chopped & Cut		6,284	7,552	2,755	6,832
Brussels Sprouts		2,344	1,775	273	624
Carrots, Diced		10,752	19,191	908	6,094
Carrots, Other		12,629	11,698	944	4,858
Cauliflower		2,158	2,531	1,040	998
Corn, Cut		20,289	26,337	9,070	5,411
Corn, Cob		13,745	17,801	10,334	3,050
Mixed Vegetables		5,179	7,781	1,179	2,389
Okra		1,363	727	661	6,767
Onion Rings		387	2,695	1,186	564
Onions, Other		5,544	4,283	360	1,652
Blackeye Peas		182	85	18	2,934
Green Peas		21,314	18,575	5,023	5,643
Peas & Carrots Mixed		1,246	1,187	102	688
Spinach		15,435	3,597	546	5,658
Squash, Summer/Zucchini		3,936	5,069	321	2,870
Southern Greens		3,980	913	14	5,797
Other Vegetables		46,093	29,524	8,762	21,578
Potatoes					
French Fries	26,414	30,204	49,828	120,322	24,884
Other Frozen	3,823	9,277	37,911	9,341	2,241
Meat					
Frozen Beef					
Boneless ⁴	1,681	30,973	24,484	80,428	23,354
Beef Cuts ⁵	840	1,989	5,451	8,985	3,401
Frozen Pork					
Ribs ⁶	415	2,088	14,404	24,482	6,760
Trimmings ⁷	276	841	10,187	34,908	6,262
Other ⁸	2,232	1,466	16,165	33,509	8,939
Other					
Veal	103	914	1,102	173	67
Lamb & Mutton	347	3,640	840	4,345	492

See footnotes at end of table.

--continued

**Stocks in Cold Storage: By Commodity, Region,
and United States, April 30, 2001 (continued)**

Commodity	East South Central	West South Central	Mountain	Pacific	US Total
	<i>1,000 Pounds</i>	<i>1,000 Pounds</i>	<i>1,000 Pounds</i>	<i>1,000 Pounds</i>	<i>1,000 Pounds</i>
Frozen Juice					
Orange Juice Concentrate	74	3,507	1,906	69,089	1,880,408
Other Juice Concentrate	713	26,362	264	125,818	330,441
Frozen Vegetables ³					
Asparagus		308	60	4,737	8,796
Limas, Fordhook		327	1	4,242	8,061
Limas, Baby		424	1,970	9,124	23,476
Green Beans, Reg. Cut		977	168	30,883	73,172
Green Beans, Fr. Style		202	129	5,121	12,658
Broccoli, Spears		10,708	68	16,304	38,209
Broccoli, Chopped & Cut		16,815	671	38,294	79,203
Brussels Sprouts		447	4	8,154	13,621
Carrots, Diced		2,469	32	48,378	87,824
Carrots, Other		13,527	750	68,438	112,844
Cauliflower		4,161	136	20,075	31,099
Corn, Cut		2,221	406	96,839	160,573
Corn, Cob		1,437	7,994	73,815	128,176
Mixed Vegetables		3,252	487	25,848	46,115
Okra		20,266	1	613	30,398
Onion Rings		718	623	256	6,429
Onions, Other		2,109	5,996	16,559	36,503
Blackeye Peas		1,084		188	4,491
Green Peas		1,473	12,059	90,291	154,378
Peas & Carrots Mixed		994	30	4,448	8,695
Spinach		21,666	1,133	42,731	90,766
Squash, Summer/Zucchini		1,669	824	8,919	23,608
Southern Greens		17,157		712	28,573
Other Vegetables		33,404	5,063	103,740	248,164
Potatoes					
French Fries	969	11,706	227,525	540,564	1,032,416
Other Frozen	107	4,874	51,851	128,562	247,987
Meat					
Frozen Beef					
Boneless ⁴	4,499	55,222	2,841	47,070	270,552
Beef Cuts ⁵	4,181	6,305	7,316	6,324	44,792
Frozen Pork					
Ribs ⁶	3,167	1,906	37	2,895	56,154
Trimming ⁷	300	4,002	64	234	57,074
Other ⁸	8,509	6,063	194	4,697	81,774
Other					
Veal		102		1,255	3,716
Lamb & Mutton		169	648	3,070	13,551

¹ East North Central combined with South Atlantic. Mountain and West North Central combined with West South Central.

² Middle Atlantic combined with South Atlantic.

³ New England combined with Middle Atlantic. East South Central combined with South Atlantic.

⁴ Includes all boxed boneless beef, such as ground beef, roasts, steaks, loins, strips, rounds, trimmings, etc. Variety meats (edible offal), such as tongues, livers, hearts, kidneys, and other organs removed from slaughtered beef, are included as miscellaneous freezer stocks.

⁵ Includes all boxed primal beef cuts, bone-in.

⁶ Includes spareribs and backribs.

⁷ Includes 42% regular trimmings, 72% special trimmings, boneless picnic meat, jowls, neckbone trimmings, blade, cheek, head, and shank meat, etc. Packaged bacon, sausage, and processed items, such as hot dogs and luncheon meats, are included in miscellaneous cooler or freezer stocks.

⁸ Includes ears, tails, feet, neckbones and snouts.

⁹ Includes tongues, kidneys, livers, stomachs, hearts, chitterlings, salivary glands, and other organs removed from slaughtered hogs.

¹⁰ Includes product unable to be classified elsewhere in this report.

**Stocks in Cold Storage: By Commodity, Region,
and United States, May 31, 2001**

Commodity	New England	Middle Atlantic	East North Central	West North Central	South Atlantic
	<i>1,000 Pounds</i>	<i>1,000 Pounds</i>	<i>1,000 Pounds</i>	<i>1,000 Pounds</i>	<i>1,000 Pounds</i>
Total Fresh Apples	1,832	121,795	69,020		60,644
Nuts					
Shelled					
Peanuts		29	221	33	386,630
Pecans ¹		184			12,247
In-Shell					
Pecans ¹		4			19,541
Dairy Products					
Natural Cheese					
American, Total	24,343	51,333	227,988	96,097	6,195
Other Natural Cheese	558	18,796	116,255	58,097	221
Frozen Poultry					
Chicken					
Broilers, Fryers					
Roasters (Whole)	90	1,780	504	333	6,932
Hens, Mature Chickens	3	342	454	958	5,888
Other	1,106	24,741	14,691	28,444	173,158
Total Chicken	1,199	26,863	15,649	29,735	185,978
Turkeys					
Whole Turkeys	6,389	17,149	26,805	43,300	40,439
Other Turkey	238	9,516	16,969	59,448	53,168
Total Turkey	6,627	26,665	43,774	102,748	93,607
Ducks		184	6,690	53	16
Total Poultry	7,826	53,712	66,113	132,536	279,601
Frozen Fruit					
Apples	21	25,546	32,591	170	425
Blueberries	11,554	3,357	19,867	137	1,833
Cherries, Tart (RSP)	20	3,323	58,504	55	285
Cherries, Sweet		412	5,952	40	3
Peaches	9	1,454	2,431	218	213
Raspberries, Red	118	1,371	850	41	90
Strawberries, Total	82	2,320	5,085	1,177	1,186
Other Frozen Fruit	71,225	21,421	280,720	68	1,037

See footnotes at end of table.

--continued

**Stocks in Cold Storage: By Commodity, Region,
and United States, May 31, 2001 (continued)**

Commodity	East South Central	West South Central	Mountain	Pacific	US Total
	<i>1,000 Pounds</i>	<i>1,000 Pounds</i>	<i>1,000 Pounds</i>	<i>1,000 Pounds</i>	<i>1,000 Pounds</i>
Total Fresh Apples		2,753	3,020	1,078,689	1,337,753
Nuts					
Shelled					
Peanuts	50,993	130,749	137	1,144	569,936
Pecans ¹	1,367	41,076		699	55,573
In-Shell					
Pecans ¹	3,145	80,641		20	103,351
Dairy Products					
Natural Cheese					
American, Total		537	11,479	86,046	504,018
Other Natural Cheese	172	603	5,630	11,464	211,796
Frozen Poultry					
Chicken					
Broilers, Fryers					
Roasters (Whole)	871	4,175	563	488	15,736
Hens, Mature Chickens	1,362	853	42	376	10,278
Other	117,558	240,386	2,571	38,191	640,846
Total Chicken	119,791	245,414	3,176	39,055	666,860
Turkeys					
Whole Turkeys	4,531	68,323	8,942	56,417	272,295
Other Turkey	248	20,480	7,278	12,954	180,299
Total Turkey	4,779	88,803	16,220	69,371	452,594
Ducks		33		71	7,047
Total Poultry	124,570	334,250	19,396	108,497	1,126,501
Frozen Fruit					
Apples	82	1,152	98	12,338	72,423
Blueberries	149	204	72	9,270	46,443
Cherries, Tart (RSP)	18	53	1,164	2,609	66,031
Cherries, Sweet	2	305	319	1,873	8,906
Peaches	47	692	17	24,129	29,210
Raspberries, Red	114	978	8	21,127	24,697
Strawberries, Total	1,285	20,199	208	212,171	243,713
Other Frozen Fruit	363	3,624	6,045	104,959	489,462

See footnotes at end of table.

--continued

**Stocks in Cold Storage: By Commodity, Region,
and United States, May 31, 2001 (continued)**

Commodity	New England	Middle Atlantic	East North Central	West North Central	South Atlantic
	<i>1,000 Pounds</i>	<i>1,000 Pounds</i>	<i>1,000 Pounds</i>	<i>1,000 Pounds</i>	<i>1,000 Pounds</i>
Frozen Juice					
Orange Juice Conc. ²	37		1,184	136	1,945,427
Other Juice Concentrate	50	15,793	14,908	970	129,581
Frozen Vegetables ³					
Asparagus		405	4,953	16	221
Limas, Fordhook		1,159	805	175	1,074
Limas, Baby		4,780	2,548	328	2,947
Green Beans, Reg. Cut		12,091	17,726	678	2,296
Green Beans, Fr. Style		3,344	2,090	83	224
Broccoli, Spears		5,856	2,909	349	1,234
Broccoli, Chopped & Cut		6,078	7,087	4,722	5,814
Brussels Sprouts		2,070	1,676	215	572
Carrots, Diced		10,621	16,387	597	4,827
Carrots, Other		11,183	11,891	926	4,595
Cauliflower		2,477	2,290	1,073	1,178
Corn, Cut		18,198	23,271	7,958	5,451
Corn, Cob		12,858	15,369	10,259	3,392
Mixed Vegetables		5,720	8,997	1,443	2,425
Okra		1,827	766	1,169	6,559
Onion Rings		454	2,622	1,936	601
Onions, Other		5,773	4,168	343	3,046
Blackeye Peas		167	83	38	2,515
Green Peas		19,421	19,024	4,931	4,451
Peas & Carrots Mixed		1,202	1,377	57	782
Spinach		18,315	4,803	1,784	6,244
Squash, Summer/Zucchini		3,369	4,457	258	4,402
Southern Greens		3,528	1,003	168	6,188
Other Vegetables		42,778	28,928	9,415	20,666
Potatoes					
French Fries	26,711	31,291	53,325	115,693	25,379
Other Frozen	3,811	9,045	44,004	7,433	2,252
Meat					
Frozen Beef					
Boneless ⁴	1,938	29,692	23,524	86,806	17,625
Beef Cuts ⁵	1,772	1,006	5,738	9,544	3,280
Frozen Pork					
Ribs ⁶	328	1,280	11,305	21,823	5,792
Trimnings ⁷	300	930	9,677	33,875	6,249
Other ⁸	2,103	1,711	14,159	30,036	8,686
Other					
Veal	93	876	866	154	64
Lamb & Mutton	333	3,352	667	4,506	539

See footnotes at end of table.

--continued

**Stocks in Cold Storage: By Commodity, Region,
and United States, May 31, 2001 (continued)**

Commodity	East South Central	West South Central	Mountain	Pacific	US Total
	<i>1,000 Pounds</i>	<i>1,000 Pounds</i>	<i>1,000 Pounds</i>	<i>1,000 Pounds</i>	<i>1,000 Pounds</i>
Frozen Juice					
Orange Juice Concentrate	52	8,045	2,058	74,492	2,031,431
Other Juice Concentrate	661	29,236	199	118,226	309,624
Frozen Vegetables ³					
Asparagus		339	36	4,420	10,390
Limas, Fordhook		297	1	3,303	6,814
Limas, Baby		402	1,446	8,054	20,505
Green Beans, Reg. Cut		811	145	25,030	58,777
Green Beans, Fr. Style		267	89	4,714	10,811
Broccoli, Spears		10,097	64	15,629	36,138
Broccoli, Chopped & Cut		19,151	986	36,485	80,323
Brussels Sprouts		537	4	7,193	12,267
Carrots, Diced		2,239	27	40,875	75,573
Carrots, Other		11,806	771	60,835	102,007
Cauliflower		3,507	115	17,799	28,439
Corn, Cut		2,002	243	72,089	129,212
Corn, Cob		1,679	7,924	51,461	102,942
Mixed Vegetables		3,501	456	26,181	48,723
Okra		19,509		719	30,549
Onion Rings		660	636	399	7,308
Onions, Other		2,161	6,326	16,948	38,765
Blackeye Peas		673		293	3,769
Green Peas		1,484	10,138	72,205	131,654
Peas & Carrots Mixed		786	14	4,081	8,299
Spinach		19,844	951	47,458	99,399
Squash, Summer/Zucchini		3,167	922	9,163	25,738
Southern Greens		15,158		607	26,652
Other Vegetables		28,478	5,866	100,898	237,029
Potatoes					
French Fries	2,056	11,769	201,307	543,459	1,010,990
Other Frozen	39	4,406	54,013	127,636	252,639
Meat					
Frozen Beef					
Boneless ⁴	5,441	57,302	2,781	57,244	282,353
Beef Cuts ⁵	4,097	8,394	7,092	6,665	47,588
Frozen Pork					
Ribs ⁶	1,416	1,615	95	1,543	45,197
Trimnings ⁷	160	2,689	58	382	54,320
Other ⁸	9,028	5,296	278	4,198	75,495
Other					
Veal		105		887	3,045
Lamb & Mutton		138	809	4,219	14,563

¹ East North Central combined with South Atlantic. Mountain and West North Central Combined with West South Central.

² Middle Atlantic combined with South Atlantic.

³ New England combined with Middle Atlantic. East South Central combined with South Atlantic.

⁴ Includes all boxed boneless beef, such as ground beef, roasts, steaks, loins, strips, rounds, trimmings, etc. Variety meats (edible offal), such as tongues, livers, hearts, kidneys, and other organs removed from slaughtered beef, are included as miscellaneous freezer stocks.

⁵ Includes all boxed primal beef cuts, bone-in.

⁶ Includes spareribs and backribs.

⁷ Includes 42% regular trimmings, 72% special trimmings, boneless picnic meat, jowls, neckbone trimmings, blade, cheek, head, and shank meat, etc. Packaged bacon, sausage, and processed items, such as hot dogs and luncheon meats, are included in miscellaneous cooler or freezer stocks.

⁸ Includes ears, tails, feet, neckbones and snouts.

⁹ Includes tongues, kidneys, livers, stomachs, hearts, chitterlings, salivary glands, and other organs removed from slaughtered hogs.

¹⁰ Includes product unable to be classified elsewhere in this report.

**Public General Warehouses: Cold Storage Space Occupied
by Region and United States, May 2001**

Region	Cooler				Freezer			
	Usable Space	Usable Space Occupied			Usable Space	Usable Space Occupied		
	May 31 2001	May 31 2000	Apr 30 2001	May 31 2001	May 31 2001	May 31 2000	Apr 30 2001	May 31 2001
	<i>1,000 Cu Ft</i>	<i>Percent</i>	<i>Percent</i>	<i>Percent</i>	<i>1,000 Cu Ft</i>	<i>Percent</i>	<i>Percent</i>	<i>Percent</i>
New England	2,166	62	75	78	19,586	79	57	60
Middle Atlantic	35,355	49	58	58	109,120	74	67	66
E. North Central	54,587	37	43	40	199,916	47	43	40
W. North Central	43,640	29	33	33	147,324	57	54	50
South Atlantic	47,820	49	36	41	185,712	55	51	52
E. South Central	9,309	40	56	60	71,044	35	36	41
W. South Central	20,940	34	27	25	134,302	64	53	55
Mountain	7,749	50	35	38	53,312	57	49	45
Pacific	43,310	30	33	34	285,789	61	59	56
US	264,876	39	40	40	1,206,105	58	53	51

Cold Storage Regions



Survey Procedures: Questionnaires are mailed about the 24th of each month to all operators on the list of approximately 1,400 public and private cold storage warehouses. In addition, apple data are obtained from special surveys and other sources (State Departments of Agriculture, U.S. Apple Association, etc.). All survey data represent stocks as of the end of the month.

Data are collected from warehouses artificially cooled to a temperature of 50 degrees Fahrenheit or lower, and whose food products are normally stored for 30 days or more. All food items in these facilities are reported regardless of the number of days stored at the time of the report. Also included are specialized storage facilities meeting the 30 day requirement, such as fruit houses, dairy manufacturing plants, frozen fruit, fruit juice, and vegetable processors, and poultry and meat packing plants. Excluded are stocks in space maintained by wholesalers, jobbers, distributors, chain stores, locker plants containing individual lockers, meat packer branch houses, and frozen food processors whose entire inventories are turned over more than once a month.

Estimating Procedures: Data for reporting firms are added to estimates for non-reporting firms to obtain regional and National totals. Estimates for non-reporting firms are obtained by multiplying the previous month's figure by a percent change from the previous month. The percent change is calculated for each item from totals of the current and previous month summed from firms that reported both months.

Revision Policy: Data are revised the following month based on late reports or corrected data. Final figures are published in the annual summary in February of the following year.

Reliability: Reports are received from 900 firms each month which represent about 70 percent of the total capacity. Firms that are not on the list or firms who have never reported are not represented in the data. Monthly data can vary due to different firms reporting month to month. Survey data are also subject to non-sampling errors such as omissions and mistakes in reporting and in processing the data. While these errors cannot be measured directly, they are minimized by carefully reviewing all reported data for consistency and reasonableness.

The next "Cold Storage" report will be released at 3 p.m. ET on July 20, 2001.

The United States Department of Agriculture (USDA) prohibits discrimination in all its programs on the basis of race, color, national origin, gender, religion, age, disability, political beliefs, sexual orientation, and marital or family status. (Not all prohibited bases apply to all programs.) Persons with disabilities who require alternative means for communication of program information (braille, large print, audiotape, etc.) should contact the USDA's TARGET Center at 202-720-2600 (voice and TDD).

To file a complaint of discrimination, write USDA, Director, Office of Civil Rights, Room 326-W, Whitten Building, 1400 Independence Avenue, SW, Washington, D.C., 20250-9410, or call 202-720-5964 (voice or TDD). USDA is an equal opportunity provider and employer.

ACCESS TO REPORTS!!

For your convenience, there are several ways to obtain NASS reports, data products, and services:

INTERNET ACCESS

All NASS reports are available free of charge on the worldwide Internet. For access, connect to the Internet and go to the NASS Home Page at: <http://www.usda.gov/nass/>. Select "Today's Reports" or Publications and then Reports by Calendar or Publications and then Search, by Title or Subject.

E-MAIL SUBSCRIPTION

There are two options for subscribing via e-mail. All NASS reports are available by subscription free of charge direct to your e-mail address. 1) Starting with the NASS Home Page at <http://www.usda.gov/nass/>, click on **Publications**, then click on the **Subscribe by E-mail** button which takes you to the page describing e-mail delivery of reports. Finally, click on **Go to the Subscription Page** and follow the instructions. 2) If you do NOT have Internet access, send an e-mail message to: usda-reports@usda.mannlib.cornell.edu. In the body of the message type the word: **list**.

AUTOFAX ACCESS

NASSFax service is available for some reports from your fax machine. Please call 202-720-2000, using the handset attached to your fax. Respond to the voice prompts. Document 0411 is a list of available reports.

PRINTED REPORTS OR DATA PRODUCTS

CALL OUR TOLL-FREE ORDER DESK: 800-999-6779 (U.S. and Canada)
Other areas, please call 703-834-0125 FAX: 703-834-0110
(Visa, MasterCard, check, or money order acceptable for payment.)

ASSISTANCE

For **assistance** with general agricultural statistics or further information about NASS or its products or services, contact the **Agricultural Statistics Hotline** at **800-727-9540**, 7:30 a.m. to 4:00 p.m. ET, or e-mail: nass@nass.usda.gov.