



# Cold Storage

---

Released July 20, 2001, by the National Agricultural Statistics Service (NASS), Agricultural Statistics Board, U.S. Department of Agriculture. For information on "Cold Storage" call Linda Simpson at (202) 720-8784, office hours 7:00 a.m. to 4:30 p.m. ET.

## HIGHLIGHTS

**Frozen food stocks** in refrigerated warehouses on June 30, 2001, were greater than year earlier levels for potatoes.

Butter stocks were 12 percent above May 2001 and were 2 percent above a year ago.

**Total red meat supplies** in freezers were 4 percent below May 2001 and were 20 percent below June 2000. Frozen pork stocks were 10 percent below last month and were 23 percent below last year. Stocks of pork bellies decreased 14 percent from last month and were 34 percent below June 2000 stocks.

**Total frozen poultry supplies** on June 30, 2001, were up 7 percent from last month but were 10 percent below last year's level. Total stocks of chicken were 3 percent above last month but were 16 percent below last year. Total pounds of turkey in freezers increased 12 percent from last month and were 1 percent above last year.

**Public cooler occupancy** on June 30, 2001, was at 42 percent of capacity, up 1 point from last year. Public freezer occupancy, at 53 percent, was down 4 percentage points from last year.

## Special Note

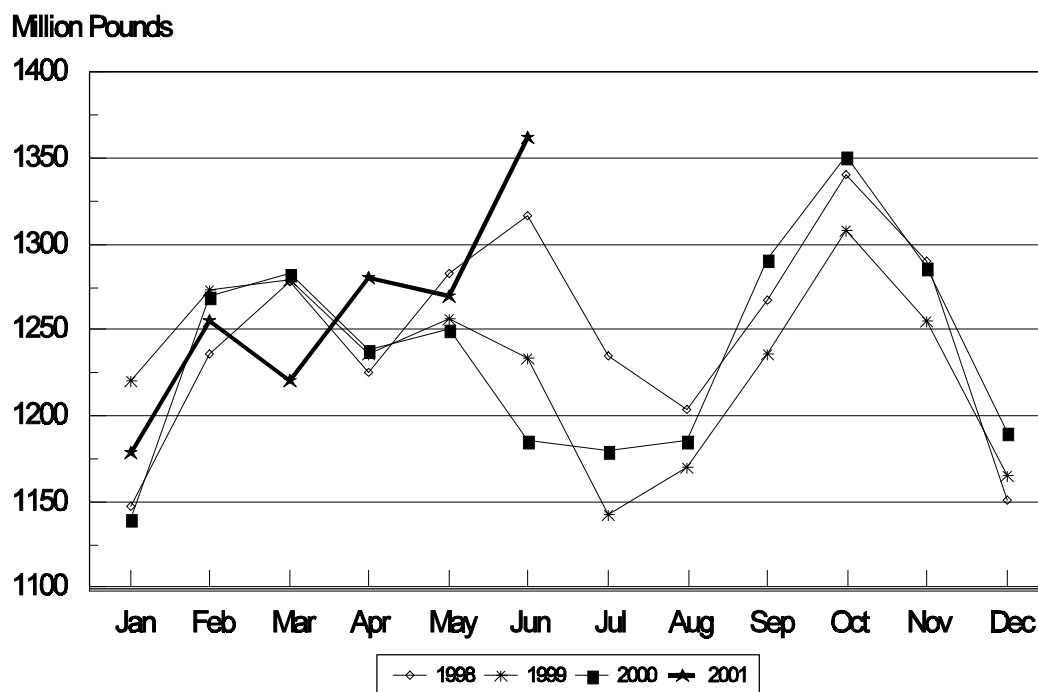
Included in this issue is a table showing December 31 cold storage stocks of vegetables by rank for the years 1980, 1990 and 2000.

This page is intentionally blank.

## Table of Contents

	<b>Page</b>
Stocks in Cold Storage: By Commodity, United States, June 2001 .....	4
Stocks in Cold Storage: By Commodity, Region, and United States, May 31, 2001 .....	8
Stocks in Cold Storage: By Commodity, Region, and United States, June 30, 2001 .....	12
Public General Warehouses: Cold Storage Space Occupied by Region and United States, June 2001 .....	16
Total Vegetables in Cold Storage: December 31, 1980, 1990 and 2000 by Rank, United States .....	17
Survey and Estimating Procedures, Revision Policy and Reliability .....	18

**Total Frozen Potatoes-United States  
Cold Storage Stocks, 1998-2001**



**Stocks in Cold Storage: By Commodity,  
United States, June 2001**

Commodity	Stocks in All Warehouses			Percent of		Public Warehouse Stocks
	Jun 30, 2000	May 31, 2001	Jun 30, 2001	Jun 2000	May 2001	Jun 30, 2001
	<i>1,000 Pounds</i>	<i>1,000 Pounds</i>	<i>1,000 Pounds</i>	<i>Percent</i>	<i>Percent</i>	<i>1,000 Lbs</i>
Fresh Fruit						
Apples						
Regular Storage	27,680	41,493	13,307	48	32	
Controlled Atmosphere	804,254	1,288,666	802,039	100	62	
Total	831,934	1,330,159	815,346	98	61	321
Pears						
Bartlett	675					
Other Varieties	27,006	17,587				
Total	27,681	17,587				
Nuts						
Shelled						
Peanuts	590,565	558,882	606,577	103	109	
Pecans	37,070	47,525	51,004	138	107	
Other Shelled	132,683	156,954	127,587	96	81	
Total	760,318	763,361	785,168	103	103	397,348
In-Shell						
Peanuts	28,421	22,247	25,181	89	113	
Pecans	185,318	103,263	77,294	42	75	
Other In-Shell	6,310	12,771	10,858	172	85	
Total	220,049	138,281	113,333	52	82	29,463
Dairy Products						
Butter, Total	145,786	132,382	148,213	102	112	128,305
(Government Owned)	420	653	825	196	126	
Natural Cheese						
American, Total	596,616	505,563	529,078	89	105	
(Government Owned)	46	1,741	1,852		106	
Swiss	15,105	12,404	12,011	80	97	
Other Natural Cheese	216,387	202,304	200,935	93	99	
Total	828,108	720,271	742,024	90	103	431,586
Eggs, Frozen						
Whites	2,387	2,458	1,869	78	76	
Yolks	684	752	618	90	82	
Whole & Mixed	9,782	10,245	9,446	97	92	
Unclassified	1,254	2,347	2,372	189	101	
Total	14,107	15,802	14,305	101	91	13,841
Frozen Poultry						
Chicken						
Broilers, Fryers						
Roasters (Whole)	45,933	15,438	26,555	58	172	
Hens, Mature Chickens	10,149	10,297	8,830	87	86	
Other	769,790	645,407	654,665	85	101	
Total Chicken	825,872	671,142	690,050	84	103	

See footnote(s) at end of table.

--continued

**Stocks in Cold Storage: By Commodity,  
United States, June 2001**

Commodity	Stocks in All Warehouses			Percent of		Public Warehouse Stocks
	Jun 30, 2000	May 31, 2001	Jun 30, 2001	Jun 2000	May 2001	Jun 30, 2001
	<i>1,000 Pounds</i>	<i>1,000 Pounds</i>	<i>1,000 Pounds</i>	<i>Percent</i>	<i>Percent</i>	<i>1,000 Lbs</i>
Turkeys						
Whole Turkeys	276,936	269,830	318,378	115	118	
Other Turkey	229,849	184,818	191,753	83	104	
Total Turkey	506,785	454,648	510,131	101	112	
Ducks	5,571	7,044	8,670	156	123	
Total Poultry	1,338,228	1,132,834	1,208,851	90	107	1,017,797
Frozen Fruit						
Apples	79,770	66,926	64,455	81	96	
Apricots	11,581	3,102	13,923	120	449	
Blackberries, Total	9,924	13,689	16,086	162	118	
IQF	6,378	9,355	9,104	143	97	
Pails and Tubs	1,055	1,103	2,084	198	189	
Barrels, 400 lbs net	1,328	1,599	2,473	186	155	
Concentrate	1,163	1,632	2,425	209	149	
Blueberries	23,584	46,968	43,971	186	94	
Boysenberries	4,407	2,751	3,468	79	126	
Cherries, Tart (RSP)	61,412	66,088	56,785	92	86	
Cherries, Tart (Juice)	922	989	895	97	90	
Cherries, Sweet	10,102	9,263	9,336	92	101	
Grapes	3,108	4,217	3,248	105	77	
Peaches	23,728	29,546	19,751	83	67	
Raspberries, Black	880	907	913	104	101	
Raspberries, Red, Total	28,426	24,764	21,178	75	86	
IQF	10,835	10,047	10,334	95	103	
Pails and Tubs	8,503	8,049	6,056	71	75	
Barrels, 400 lbs net	7,832	5,733	3,934	50	69	
Concentrate	1,256	935	854	68	91	
Strawberries, Total	515,211	241,795	362,982	70	150	
Other Frozen Fruit	346,613	489,333	422,127	122	86	
Total	1,119,668	1,000,338	1,039,118	93	104	739,311
Frozen Juice						
Orange Juice Conc. <sup>1</sup>	2,037,921	2,061,836	2,024,002	99	98	
(Gallon Equivalent)	205,934	208,350	204,527			
Other Juice Concentrate	327,624	304,940	314,477	96	103	
Total	2,365,545	2,366,776	2,338,479	99	99	258,216

See footnote(s) at end of table.

--continued

**Stocks in Cold Storage: By Commodity,  
United States, June 2001**

Commodity	Stocks in All Warehouses			Percent of		Public Warehouse Stocks
	Jun 30, 2000	May 31, 2001	Jun 30, 2001	Jun 2000	May 2001	Jun 30, 2001
	<i>1,000 Pounds</i>	<i>1,000 Pounds</i>	<i>1,000 Pounds</i>	<i>Percent</i>	<i>Percent</i>	<i>1,000 Lbs</i>
Frozen Vegetables						
Asparagus	15,494	10,402	14,715	95	141	
Limas, Fordhook	4,692	6,809	6,727	143	99	
Limas, Baby	24,577	20,886	17,216	70	82	
Green Beans, Reg. Cut	48,483	57,758	49,185	101	85	
Green Beans, Fr. Style	16,481	10,713	9,053	55	85	
Broccoli, Spears	35,731	36,161	35,926	101	99	
Broccoli, Chopped & Cut	99,408	80,368	89,079	90	111	
Brussels Sprouts	14,913	12,268	12,242	82	100	
Carrots, Diced	46,717	75,928	59,981	128	79	
Carrots, Other	133,519	103,692	102,315	77	99	
Cauliflower	37,597	28,456	26,894	72	95	
Corn, Cut	121,653	128,816	97,330	80	76	
Corn, Cob	106,327	105,265	75,538	71	72	
Mixed Vegetables	47,854	47,796	47,490	99	99	
Okra	53,942	30,558	42,932	80	140	
Onion Rings	12,284	7,307	7,775	63	106	
Onions, Other	53,537	38,709	37,789	71	98	
Blackeye Peas	3,517	3,769	3,257	93	86	
Green Peas	254,544	131,950	239,195	94	181	
Peas & Carrots Mixed	7,512	8,343	8,571	114	103	
Spinach	99,810	98,871	97,260	97	98	
Squash, Summer/Zucchini	41,097	25,686	31,900	78	124	
Southern Greens	36,237	26,667	28,128	78	105	
Other Vegetables	280,889	236,599	249,779	89	106	
Total	1,596,815	1,333,777	1,390,277	87	104	984,761
Potatoes						
French Fries	929,820	1,017,282	1,094,364	118	108	
Other Frozen	256,445	253,144	267,818	104	106	
Total	1,186,265	1,270,426	1,362,182	115	107	1,031,910

See footnote(s) at end of table.

--continued

**Stocks in Cold Storage: By Commodity,  
United States, June 2001 (Continued)**

Commodity	Stocks in All Warehouses			Percent of		Public Warehouse Stocks
	Jun 30, 2000	May 31, 2001	Jun 30, 2001	Jun 2000	May 2001	Jun 30, 2001
	<i>1,000 Pounds</i>	<i>1,000 Pounds</i>	<i>1,000 Pounds</i>	<i>Percent</i>	<i>Percent</i>	<i>1,000 Lbs</i>
<b>Meat</b>						
Frozen Beef						
Boneless <sup>2</sup>	348,195	278,156	289,287	83	104	
Beef Cuts <sup>3</sup>	56,869	47,229	43,560	77	92	
Total	405,064	325,385	332,847	82	102	330,055
(Government Owned)	2,058	2,190	1,899	92	87	
Frozen Pork						
Picnics, Bone-in	11,095	10,318	11,764	106	114	
Hams, Total	111,702	80,765	84,195	75	104	81,166
Bone-in	60,429	33,978	36,638	61	108	36,173
Boneless <sup>4</sup>	51,273	46,787	47,557	93	102	44,993
Bellies	60,097	46,029	39,554	66	86	
Loins, Total	25,263	27,412	25,601	101	93	23,929
Bone-in	9,835	14,362	11,916	121	83	
Boneless <sup>5</sup>	15,428	13,050	13,685	89	105	
Ribs <sup>6</sup>	37,218	45,307	32,972	89	73	
Butts	6,943	9,972	6,161	89	62	
Trimmings <sup>7</sup>	45,056	54,347	46,466	103	85	
Other <sup>8</sup>	92,849	75,513	67,392	73	89	
Variety Meats <sup>9</sup>	71,100	50,091	46,088	65	92	
Unclassified <sup>10</sup>	34,137	21,474	20,820	61	97	
Total	495,460	421,228	381,013	77	90	338,573
(Government Owned)	4,421	6,542	6,735	152	103	
Other						
Veal	4,462	3,608	3,577	80	99	
Lamb & Mutton	13,984	14,586	15,416	110	106	
Total	18,446	18,194	18,993	103	104	18,802
Canned						
Canned Hams	6,475	7,062	7,650	118	108	
Other Canned Meat	1,300	618	711	55	115	
Total	7,775	7,680	8,361	108	109	8,230
Total	926,745	772,487	741,214	80	96	695,660
Miscellaneous						
Cooler	648,820	706,140	715,739	110	101	366,126
Freezer	2,172,335	2,077,867	2,040,073	94	98	1,953,122
Total	2,821,155	2,784,007	2,755,812	97	99	2,319,248
Commodities						
Stored in Coolers	3,324,685	3,698,105	3,194,871	96	86	1,374,398
Stored in Freezers	10,857,719	9,954,427	10,166,524	94	102	6,814,690
Total	14,182,404	13,652,532	13,361,395	94	98	8,189,088

<sup>1</sup> Adjusted to 42.0 degrees Brix equivalent (9.896 pounds per gallon).

<sup>2</sup> Includes all boxed boneless beef, such as ground beef, roasts, steaks, loins, strips, rounds, trimmings, etc. Variety meats (edible offal), such as tongues, livers, hearts, kidneys, and other organs removed from slaughtered beef, are included as miscellaneous freezer stocks.

<sup>3</sup> Includes all boxed primal beef cuts, bone-in.

<sup>4</sup> Includes full ham, bone removed and individual muscles separated.

<sup>5</sup> Includes pork tenderloins.

<sup>6</sup> Includes spareribs and backribs.

<sup>7</sup> Includes 42% regular trimmings, 72% special trimmings, boneless picnic meat, jowls, neckbone trimmings, blade, cheek, head, and shank meat, etc. Packaged bacon, sausage, and processed items, such as hot dogs and luncheon meats, are included in miscellaneous cooler or freezer stocks.

<sup>8</sup> Includes ears, tails, feet, neckbones and snouts.

<sup>9</sup> Includes tongues, kidneys, livers, stomachs, hearts, chitterlings, salivary glands, and other organs removed from slaughtered hogs.

<sup>10</sup> Includes product unable to be classified elsewhere in this report.

**Stocks in Cold Storage: By Commodity, Region,  
and United States, May 31, 2001**

Commodity	New England	Middle Atlantic	East North Central	West North Central	South Atlantic
	<i>1,000 Pounds</i>	<i>1,000 Pounds</i>	<i>1,000 Pounds</i>	<i>1,000 Pounds</i>	<i>1,000 Pounds</i>
Total Fresh Apples	1,832	114,143	69,022		60,644
Nuts					
Shelled					
Peanuts		29	220	33	385,401
Pecans <sup>1</sup>		135			12,348
In-Shell					
Pecans <sup>1</sup>		4			19,453
Dairy Products					
Natural Cheese					
American, Total	24,343	51,349	228,348	96,731	5,323
Other Natural Cheese	558	23,315	101,395	58,295	221
Frozen Poultry					
Chicken					
Broilers, Fryers					
Roasters (Whole)	90	1,780	483	318	6,932
Hens, Mature Chickens	3	342	454	958	5,888
Other	1,106	24,741	15,418	27,920	175,833
Total Chicken	1,199	26,863	16,355	29,196	188,653
Turkeys					
Whole Turkeys	6,389	17,149	30,153	43,808	40,439
Other Turkey	238	9,489	18,091	59,294	53,168
Total Turkey	6,627	26,638	48,244	103,102	93,607
Ducks		184	6,688	53	16
Total Poultry	7,826	53,685	71,287	132,351	282,276
Frozen Fruit					
Apples	21	20,074	32,565	170	425
Blueberries	11,554	3,357	20,172	141	1,833
Cherries, Tart (RSP)	20	3,323	58,553	57	285
Cherries, Sweet		412	6,309	40	3
Peaches	9	1,454	2,477	219	213
Raspberries, Red	118	1,371	902	43	90
Strawberries, Total	82	2,320	4,504	1,140	1,186
Other Frozen Fruit	71,225	21,421	280,493	71	1,037

See footnote(s) at end of table.

--continued



**Stocks in Cold Storage: By Commodity, Region,  
and United States, May 31, 2001 (continued)**

Commodity	East South Central	West South Central	Mountain	Pacific	US Total
	<i>1,000 Pounds</i>	<i>1,000 Pounds</i>	<i>1,000 Pounds</i>	<i>1,000 Pounds</i>	<i>1,000 Pounds</i>
Total Fresh Apples		2,753	3,020	1,078,745	1,330,159
Nuts					
Shelled					
Peanuts	50,993	120,924	137	1,145	558,882
Pecans <sup>1</sup>	1,367	32,976		699	47,525
In-Shell					
Pecans <sup>1</sup>	3,145	80,641		20	103,263
Dairy Products					
Natural Cheese					
American, Total		537	11,896	87,036	505,563
Other Natural Cheese	170	603	6,130	11,617	202,304
Frozen Poultry					
Chicken					
Broilers, Fryers					
Roasters (Whole)	609	4,175	563	488	15,438
Hens, Mature Chickens	1,381	853	42	376	10,297
Other	119,239	240,386	2,571	38,193	645,407
Total Chicken	121,229	245,414	3,176	39,057	671,142
Turkeys					
Whole Turkeys	4,401	64,744	8,942	53,805	269,830
Other Turkey	248	24,058	7,278	12,954	184,818
Total Turkey	4,649	88,802	16,220	66,759	454,648
Ducks		33		70	7,044
Total Poultry	125,878	334,249	19,396	105,886	1,132,834
Frozen Fruit					
Apples	82	1,152	98	12,339	66,926
Blueberries	153	204	72	9,482	46,968
Cherries, Tart (RSP)	18	53	1,164	2,615	66,088
Cherries, Sweet	2	305	319	1,873	9,263
Peaches	47	692	17	24,418	29,546
Raspberries, Red	115	978	8	21,139	24,764
Strawberries, Total	1,285	20,199	208	210,871	241,795
Other Frozen Fruit	367	3,624	6,045	105,050	489,333

See footnote(s) at end of table.

--continued

**Stocks in Cold Storage: By Commodity, Region,  
and United States, May 31, 2001 (continued)**

Commodity	New England	Middle Atlantic	East North Central	West North Central	South Atlantic
	<i>1,000 Pounds</i>	<i>1,000 Pounds</i>	<i>1,000 Pounds</i>	<i>1,000 Pounds</i>	<i>1,000 Pounds</i>
Frozen Juice					
Orange Juice Conc. <sup>2</sup>	37		934	136	1,976,082
Other Juice Concentrate	50	17,893	14,896	973	122,808
Frozen Vegetables <sup>3</sup>					
Asparagus		395	4,954	16	221
Limas, Fordhook		1,174	805	175	1,054
Limas, Baby		4,781	2,584	328	3,286
Green Beans, Reg. Cut		12,131	16,562	678	2,425
Green Beans, Fr. Style		3,349	2,107	83	202
Broccoli, Spears		5,861	2,933	349	1,234
Broccoli, Chopped & Cut		6,099	7,110	4,722	5,814
Brussels Sprouts		2,070	1,677	215	572
Carrots, Diced		10,632	16,697	597	4,862
Carrots, Other		11,182	13,739	926	4,658
Cauliflower		2,486	2,287	1,073	1,178
Corn, Cut		18,254	22,116	7,962	5,479
Corn, Cob		12,887	15,769	10,259	3,401
Mixed Vegetables		5,719	9,054	1,443	2,331
Okra		1,818	784	1,169	6,559
Onion Rings		454	2,621	1,936	601
Onions, Other		5,770	4,131	343	3,046
Blackeye Peas		167	83	38	2,515
Green Peas		19,475	19,165	4,931	4,563
Peas & Carrots Mixed		1,202	1,377	57	826
Spinach		18,286	4,802	1,784	5,746
Squash, Summer/Zucchini		3,371	4,457	258	4,402
Southern Greens		3,543	1,003	168	6,188
Other Vegetables		42,803	28,633	9,415	20,712
Potatoes					
French Fries	26,711	31,291	51,626	115,700	25,379
Other Frozen	3,811	9,045	43,824	7,433	2,252
Meat					
Frozen Beef					
Boneless <sup>4</sup>	1,938	29,675	24,786	86,762	17,625
Beef Cuts <sup>5</sup>	1,772	1,006	5,383	9,545	3,280
Frozen Pork					
Ribs <sup>6</sup>	328	1,282	11,411	21,823	5,792
Trimmings <sup>7</sup>	300	943	9,691	33,875	6,249
Other <sup>8</sup>	2,103	1,711	14,177	30,036	8,686
Other					
Veal	93	876	1,429	154	64
Lamb & Mutton	333	3,352	690	4,506	539

See footnote(s) at end of table.

--continued

**Stocks in Cold Storage: By Commodity, Region,  
and United States, May 31, 2001 (continued)**

Commodity	East South Central	West South Central	Mountain	Pacific	US Total
	<i>1,000 Pounds</i>	<i>1,000 Pounds</i>	<i>1,000 Pounds</i>	<i>1,000 Pounds</i>	<i>1,000 Pounds</i>
Frozen Juice					
Orange Juice Concentrate	52	8,045	2,058	74,492	2,061,836
Other Juice Concentrate	659	29,236	199	118,226	304,940
Frozen Vegetables <sup>3</sup>					
Asparagus		339	36	4,441	10,402
Limas, Fordhook		297	1	3,303	6,809
Limas, Baby		402	1,446	8,059	20,886
Green Beans, Reg. Cut		811	145	25,006	57,758
Green Beans, Fr. Style		267	89	4,616	10,713
Broccoli, Spears		10,097	64	15,623	36,161
Broccoli, Chopped & Cut		19,151	986	36,486	80,368
Brussels Sprouts		537	4	7,193	12,268
Carrots, Diced		2,239	27	40,874	75,928
Carrots, Other		11,806	771	60,610	103,692
Cauliflower		3,507	115	17,810	28,456
Corn, Cut		2,002	243	72,760	128,816
Corn, Cob		1,679	7,924	53,346	105,265
Mixed Vegetables		3,501	456	25,292	47,796
Okra		19,509		719	30,558
Onion Rings		660	636	399	7,307
Onions, Other		2,161	6,326	16,932	38,709
Blackeye Peas		673		293	3,769
Green Peas		1,484	10,138	72,194	131,950
Peas & Carrots Mixed		786	14	4,081	8,343
Spinach		19,844	951	47,458	98,871
Squash, Summer/Zucchini		3,167	922	9,109	25,686
Southern Greens		15,158		607	26,667
Other Vegetables		28,478	5,866	100,692	236,599
Potatoes					
French Fries	2,056	11,769	201,307	551,443	1,017,282
Other Frozen	27	4,406	54,013	128,333	253,144
Meat					
Frozen Beef					
Boneless <sup>4</sup>	5,443	57,302	2,781	51,844	278,156
Beef Cuts <sup>5</sup>	4,095	8,394	7,092	6,662	47,229
Frozen Pork					
Ribs <sup>6</sup>	1,416	1,615	95	1,545	45,307
Trimming <sup>7</sup>	160	2,689	58	382	54,347
Other <sup>8</sup>	9,028	5,296	278	4,198	75,513
Other					
Veal		105		887	3,608
Lamb & Mutton		138	809	4,219	14,586

<sup>1</sup> East North Central combined with South Atlantic. Mountain and West North Central combined with West South Central.

<sup>2</sup> Middle Atlantic combined with South Atlantic.

<sup>3</sup> New England combined with Middle Atlantic. East South Central combined with South Atlantic.

<sup>4</sup> Includes all boxed boneless beef, such as ground beef, roasts, steaks, loins, strips, rounds, trimmings, etc. Variety meats (edible offal), such as tongues, livers, hearts, kidneys, and other organs removed from slaughtered beef, are included as miscellaneous freezer stocks.

<sup>5</sup> Includes all boxed primal beef cuts, bone-in.

<sup>6</sup> Includes spareribs and backribs.

<sup>7</sup> Includes 42% regular trimmings, 72% special trimmings, boneless picnic meat, jowls, neckbone trimmings, blade, cheek, head, and shank meat, etc. Packaged bacon, sausage, and processed items, such as hot dogs and luncheon meats, are included in miscellaneous cooler or freezer stocks.

<sup>8</sup> Includes ears, tails, feet, neckbones and snouts.

<sup>9</sup> Includes tongues, kidneys, livers, stomachs, hearts, chitterlings, salivary glands, and other organs removed from slaughtered hogs.

<sup>10</sup> Includes product unable to be classified elsewhere in this report.

**Stocks in Cold Storage: By Commodity, Region,  
and United States, June 30, 2001**

Commodity	New England	Middle Atlantic	East North Central	West North Central	South Atlantic
	<i>1,000 Pounds</i>	<i>1,000 Pounds</i>	<i>1,000 Pounds</i>	<i>1,000 Pounds</i>	<i>1,000 Pounds</i>
Total Fresh Apples	25	65,707	9		
Nuts					
Shelled					
Peanuts		14	276	35	422,957
Pecans <sup>1</sup>		149			12,061
In-Shell					
Pecans <sup>1</sup>		17			17,840
Dairy Products					
Natural Cheese					
American, Total	24,965	51,904	240,795	103,411	5,006
Other Natural Cheese	610	24,885	98,579	58,122	222
Frozen Poultry					
Chicken					
Broilers, Fryers					
Roasters (Whole)	82	1,928	606	932	10,238
Hens, Mature Chickens		330	481	574	5,153
Other	1,127	19,587	16,458	24,525	174,780
Total Chicken	1,209	21,845	17,545	26,031	190,171
Turkeys					
Whole Turkeys	10,937	22,808	28,681	44,506	64,174
Other Turkey	230	11,099	19,015	58,121	59,845
Total Turkey	11,167	33,907	47,696	102,627	124,019
Ducks		382	8,044	55	69
Total Poultry	12,376	56,134	73,285	128,713	314,259
Frozen Fruit					
Apples	43	18,663	31,714	946	474
Blueberries	10,348	3,764	16,728	122	4,381
Cherries, Tart (RSP)	18	2,558	50,728	46	269
Cherries, Sweet		397	5,617	35	3
Peaches	7	1,360	1,937	177	177
Raspberries, Red	118	1,440	1,006	45	86
Strawberries, Total	87	3,076	5,469	1,114	1,397
Other Frozen Fruit	60,060	11,250	244,399	58	742

See footnote(s) at end of table.

--continued

**Stocks in Cold Storage: By Commodity, Region,  
and United States, June 30, 2001 (continued)**

Commodity	East South Central	West South Central	Mountain	Pacific	US Total
	<i>1,000 Pounds</i>	<i>1,000 Pounds</i>	<i>1,000 Pounds</i>	<i>1,000 Pounds</i>	<i>1,000 Pounds</i>
Total Fresh Apples		4	6	749,595	815,346
Nuts					
Shelled					
Peanuts	56,168	125,478	146	1,503	606,577
Pecans <sup>1</sup>	1,449	36,744		601	51,004
In-Shell					
Pecans <sup>1</sup>	2,593	56,824		20	77,294
Dairy Products					
Natural Cheese					
American, Total		1,185	12,941	88,871	529,078
Other Natural Cheese	164	238	5,852	12,263	200,935
Frozen Poultry					
Chicken					
Broilers, Fryers					
Roasters (Whole)	1,775	8,313	389	2,292	26,555
Hens, Mature Chickens	563	232	40	1,457	8,830
Other	129,675	250,365	2,244	35,904	654,665
Total Chicken	132,013	258,910	2,673	39,653	690,050
Turkeys					
Whole Turkeys	6,972	72,903	12,552	54,845	318,378
Other Turkey	406	19,394	8,468	15,175	191,753
Total Turkey	7,378	92,297	21,020	70,020	510,131
Ducks		36		84	8,670
Total Poultry	139,391	351,243	23,693	109,757	1,208,851
Frozen Fruit					
Apples	55	827	86	11,647	64,455
Blueberries	168	364	60	8,036	43,971
Cherries, Tart (RSP)	8	47	1,006	2,105	56,785
Cherries, Sweet	2	227	431	2,624	9,336
Peaches	37	563	12	15,481	19,751
Raspberries, Red	116	669	6	17,692	21,178
Strawberries, Total	1,923	31,382	276	318,258	362,982
Other Frozen Fruit	302	3,242	5,064	97,010	422,127

See footnote(s) at end of table.

--continued

**Stocks in Cold Storage: By Commodity, Region,  
and United States, June 30, 2001 (continued)**

Commodity	New England	Middle Atlantic	East North Central	West North Central	South Atlantic
	<i>1,000 Pounds</i>	<i>1,000 Pounds</i>	<i>1,000 Pounds</i>	<i>1,000 Pounds</i>	<i>1,000 Pounds</i>
Frozen Juice					
Orange Juice Conc. <sup>2</sup>	19		867	94	1,940,947
Other Juice Concentrate	65	18,443	13,235	1,522	131,542
Frozen Vegetables <sup>3</sup>					
Asparagus		640	8,502	10	354
Limas, Fordhook		1,206	572	165	1,270
Limas, Baby		3,740	2,404	277	2,412
Green Beans, Reg. Cut		11,267	12,001	1,022	3,839
Green Beans, Fr. Style		3,168	1,802	54	242
Broccoli, Spears		5,666	3,518	297	1,855
Broccoli, Chopped & Cut		5,764	7,246	13,771	6,757
Brussels Sprouts		2,403	1,271	339	685
Carrots, Diced		9,311	12,555	376	4,139
Carrots, Other		10,753	14,302	793	4,531
Cauliflower		2,065	2,312	908	1,003
Corn, Cut		14,383	19,348	6,080	5,463
Corn, Cob		11,080	13,007	4,349	3,901
Mixed Vegetables		6,442	9,093	1,447	2,736
Okra		2,040	899	5,713	10,743
Onion Rings		385	2,874	1,942	593
Onions, Other		5,178	4,650	334	3,610
Blackeye Peas		180	90	30	1,901
Green Peas		44,802	22,847	5,525	8,413
Peas & Carrots Mixed		1,284	1,366	96	839
Spinach		20,350	5,110	1,779	6,865
Squash, Summer/Zucchini		3,201	4,338	244	6,009
Southern Greens		3,728	940	643	6,710
Other Vegetables		45,538	29,004	9,934	22,120
Potatoes					
French Fries	26,536	32,517	48,091	122,175	27,752
Other Frozen	5,472	13,120	46,421	12,863	3,733
Meat					
Frozen Beef					
Boneless <sup>4</sup>	2,277	29,218	21,657	93,338	21,414
Beef Cuts <sup>5</sup>	2,286	705	5,098	9,139	2,942
Frozen Pork					
Ribs <sup>6</sup>	235	1,061	8,253	15,526	3,835
Trimnings <sup>7</sup>	316	946	9,309	26,501	6,166
Other <sup>8</sup>	1,998	1,735	13,420	24,328	8,309
Other					
Veal	99	759	1,435	196	64
Lamb & Mutton	353	3,831	792	4,525	618

See footnote(s) at end of table.

--continued

**Stocks in Cold Storage: By Commodity, Region,  
and United States, June 30, 2001 (continued)**

Commodity	East South Central	West South Central	Mountain	Pacific	US Total
	<i>1,000 Pounds</i>	<i>1,000 Pounds</i>	<i>1,000 Pounds</i>	<i>1,000 Pounds</i>	<i>1,000 Pounds</i>
Frozen Juice					
Orange Juice Concentrate	46	8,620	1,996	71,413	2,024,002
Other Juice Concentrate	578	28,846	261	119,985	314,477
Frozen Vegetables <sup>3</sup>					
Asparagus		459	28	4,722	14,715
Limas, Fordhook		275		3,239	6,727
Limas, Baby		348	1,450	6,585	17,216
Green Beans, Reg. Cut		1,714	149	19,193	49,185
Green Beans, Fr. Style		302	65	3,420	9,053
Broccoli, Spears		9,084	84	15,422	35,926
Broccoli, Chopped & Cut		19,480	1,004	35,057	89,079
Brussels Sprouts		546	4	6,994	12,242
Carrots, Diced		1,736	21	31,843	59,981
Carrots, Other		13,270	657	58,009	102,315
Cauliflower		4,139	137	16,330	26,894
Corn, Cut		1,766	264	50,026	97,330
Corn, Cob		1,319	6,130	35,752	75,538
Mixed Vegetables		3,268	459	24,045	47,490
Okra		22,589		948	42,932
Onion Rings		759	551	671	7,775
Onions, Other		2,650	6,090	15,277	37,789
Blackeye Peas		777		279	3,257
Green Peas		2,235	14,666	140,707	239,195
Peas & Carrots Mixed		630	14	4,342	8,571
Spinach		17,064	722	45,370	97,260
Squash, Summer/Zucchini		3,116	824	14,168	31,900
Southern Greens		14,993		1,114	28,128
Other Vegetables		34,424	6,205	102,554	249,779
Potatoes					
French Fries	3,510	13,102	264,229	556,452	1,094,364
Other Frozen	15	4,703	59,211	122,280	267,818
Meat					
Frozen Beef					
Boneless <sup>4</sup>	5,493	55,592	2,559	57,739	289,287
Beef Cuts <sup>5</sup>	2,652	7,174	6,542	7,022	43,560
Frozen Pork					
Ribs <sup>6</sup>	922	1,266	114	1,760	32,972
Trimnings <sup>7</sup>	138	2,658	49	383	46,466
Other <sup>8</sup>	7,906	5,101	318	4,277	67,392
Other					
Veal		100		924	3,577
Lamb & Mutton		148	906	4,243	15,416

<sup>1</sup> East North Central combined with South Atlantic. Mountain and West North Central Combined with West South Central.

<sup>2</sup> Middle Atlantic combined with South Atlantic.

<sup>3</sup> New England combined with Middle Atlantic. East South Central combined with South Atlantic.

<sup>4</sup> Includes all boxed boneless beef, such as ground beef, roasts, steaks, loins, strips, rounds, trimmings, etc. Variety meats (edible offal), such as tongues, livers, hearts, kidneys, and other organs removed from slaughtered beef, are included as miscellaneous freezer stocks.

<sup>5</sup> Includes all boxed primal beef cuts, bone-in.

<sup>6</sup> Includes spareribs and backribs.

<sup>7</sup> Includes 42% regular trimmings, 72% special trimmings, boneless picnic meat, jowls, neckbone trimmings, blade, cheek, head, and shank meat, etc. Packaged bacon, sausage, and processed items, such as hot dogs and luncheon meats, are included in miscellaneous cooler or freezer stocks.

<sup>8</sup> Includes ears, tails, feet, neckbones and snouts.

<sup>9</sup> Includes tongues, kidneys, livers, stomachs, hearts, chitterlings, salivary glands, and other organs removed from slaughtered hogs.

<sup>10</sup> Includes product unable to be classified elsewhere in this report.

**Public General Warehouses: Cold Storage Space Occupied  
by Region and United States, June 2001**

Region	Cooler				Freezer			
	Usable Space	Usable Space Occupied			Usable Space	Usable Space Occupied		
		Jun 30 2001	Jun 30 2000	May 31 2001		Jun 30 2001	Jun 30 2000	May 31 2001
	<i>1,000 Cu Ft</i>	<i>Percent</i>	<i>Percent</i>	<i>Percent</i>	<i>1,000 Cu Ft</i>	<i>Percent</i>	<i>Percent</i>	<i>Percent</i>
New England	2,191	60	78	80	19,649	72	60	65
Middle Atlantic	42,656	51	65	69	109,445	72	66	68
E. North Central	66,689	41	41	43	214,569	43	41	42
W. North Central	44,594	34	33	34	149,099	56	53	53
South Atlantic	48,333	45	38	42	185,841	57	52	55
E. South Central	9,419	42	55	52	71,363	37	38	39
W. South Central	21,349	38	26	25	134,796	63	54	55
Mountain	5,726	54	30	30	52,160	59	44	49
Pacific	43,706	32	34	31	287,516	61	55	57
US	284,663	41	41	42	1,224,438	57	52	53

## Cold Storage Regions





**Frozen Vegetable Stocks in Cold Storage by Commodity:  
Pounds, Percent of Total and Rank  
United States, December 31, 2000, 1990 and 1980**

Commodity	December 31								
	2000			1990			1980		
	<i>000 Lbs.</i>	<i>Pct.</i>	<i>Rank</i>	<i>000 Lbs.</i>	<i>Pct.</i>	<i>Rank</i>	<i>000 Lbs.</i>	<i>Pct.</i>	<i>Rank</i>
Cut Corn	315,297	14.3	1	310,029	13.5	1	191,035	11.5	2
Green Peas	295,784	13.4	2	282,118	12.2	2	226,556	13.6	1
Cob Corn	255,615	11.6	3	269,370	11.7	3	168,680	10.1	3
Carrots other than Diced <sup>2</sup>	185,041	8.4	4	120,964	5.3	5	53,305	3.2	10
Green Beans, Regular	147,391	6.7	5	185,349	8.0	4	136,711	8.2	4
Diced Carrots Chopped and	110,335	5.0	6	103,569	4.5	6	84,376	5.1	5
Cut Broccoli	74,665	3.4	7	63,988	2.8	12	51,767	3.1	11
Spinach	50,765	2.3	8	90,923	3.9	8	53,903	3.2	8
Okra	47,217	2.1	9	43,073	1.9	15	32,867	2.0	16
Mixed Vegetables	46,312	2.1	10	61,408	2.7	13	45,674	2.7	14
Cauliflower	44,974	2.0	11	91,414	4.0	7	69,441	4.2	6
Squash, Summer/Zucchini	42,572	1.9	12	65,537	2.8	11	32,391	1.9	17
Onions other than Rings <sup>3</sup>	40,420	1.8	13	24,698	1.1	18	15,571	0.9	19
Southern Greens	38,934	1.8	14	29,940	1.3	17	28,540	1.7	18
Broccoli Spears	33,295	1.5	15	49,026	2.1	14	47,387	2.8	13
Baby Limas	32,577	1.5	16	74,769	3.2	9	50,725	3.1	12
Green Beans, French Cut	28,568	1.3	17	67,835	2.9	10	53,640	3.2	9
Brussels Sprouts	19,632	0.9	18	30,691	1.3	16	54,893	3.3	7
Onion Rings	14,485	0.7	19	9,723	0.4	22	12,441	0.7	20
Fordhook									
Lima Beans	14,353	0.7	20	16,479	0.7	20	39,492	2.4	15
Asparagus	11,359	0.5	21	11,486	0.5	21	7,971	0.5	23
Peas and Carrots									
Mixed	7,770	0.4	22	7,805	0.3	23	10,914	0.7	21
Blackeye Peas	4,438	0.2	23	23,878	1.0	19	8,564	0.5	22
Other Frozen Vegetables <sup>1</sup>	340,043	15.4		269,029	11.7		185,870	11.2	
Total	2,201,842	100.0		2,303,101	100.0		1,662,714	100.0	

<sup>1</sup> Includes artichokes, bean sprouts, celery, sweet potatoes/yams, chives, chestnuts, cilantro, garlic, ginger, leeks, rosemary, shallots, peppers, tomatoes, mushrooms, wax beans, etc.

<sup>2</sup> Includes whole, sliced, baby whole, crinkle cut, chips, chunks, julienne, shoestring, etc.

<sup>3</sup> Includes diced, green, whole, pearl, chopped, strips, roasted, etc.

**Survey Procedures:** Questionnaires are mailed about the 24th of each month to all operators on the list of approximately 1,400 public and private cold storage warehouses. In addition, apple data are obtained from special surveys and other sources (State Departments of Agriculture, U.S. Apple Association, etc.). All survey data represent stocks as of the end of the month.

Data are collected from warehouses artificially cooled to a temperature of 50 degrees Fahrenheit or lower, and whose food products are normally stored for 30 days or more. All food items in these facilities are reported regardless of the number of days stored at the time of the report. Also included are specialized storage facilities meeting the 30 day requirement, such as fruit houses, dairy manufacturing plants, frozen fruit, fruit juice, and vegetable processors, and poultry and meat packing plants. Excluded are stocks in space maintained by wholesalers, jobbers, distributors, chain stores, locker plants containing individual lockers, meat packer branch houses, and frozen food processors whose entire inventories are turned over more than once a month.

**Estimating Procedures:** Data for reporting firms are added to estimates for non-reporting firms to obtain regional and National totals. Estimates for non-reporting firms are obtained by multiplying the previous month's figure by a percent change from the previous month. The percent change is calculated for each item from totals of the current and previous month summed from firms that reported both months.

**Revision Policy:** Data are revised the following month based on late reports or corrected data. Final figures are published in the annual summary in February of the following year.

**Reliability:** Reports are received from 900 firms each month which represent about 70 percent of the total capacity. Firms that are not on the list or firms who have never reported are not represented in the data. Monthly data can vary due to different firms reporting month to month. Survey data are also subject to non-sampling errors such as omissions and mistakes in reporting and in processing the data. While these errors cannot be measured directly, they are minimized by carefully reviewing all reported data for consistency and reasonableness.

The next "Cold Storage" report will be released at 3 p.m. ET on August 17, 2001.

The United States Department of Agriculture (USDA) prohibits discrimination in all its programs on the basis of race, color, national origin, gender, religion, age, disability, political beliefs, sexual orientation, and marital or family status. (Not all prohibited bases apply to all programs.) Persons with disabilities who require alternative means for communication of program information (braille, large print, audiotape, etc.) should contact the USDA's TARGET Center at 202-720-2600 (voice and TDD).

To file a complaint of discrimination, write USDA, Director, Office of Civil Rights, Room 326-W, Whitten Building, 1400 Independence Avenue, SW, Washington, D.C., 20250-9410, or call 202-720-5964 (voice or TDD). USDA is an equal opportunity provider and employer.

## **ACCESS TO REPORTS!!**

---

For your convenience, there are several ways to obtain NASS reports, data products, and services:

### **INTERNET ACCESS**

All NASS reports are available free of charge on the worldwide Internet. For access, connect to the Internet and go to the NASS Home Page at: <http://www.usda.gov/nass/>. Select "Today's Reports" or Publications and then Reports by Calendar or Publications and then Search, by Title or Subject.

### **E-MAIL SUBSCRIPTION**

There are two options for subscribing via e-mail. All NASS reports are available by subscription free of charge direct to your e-mail address. 1) Starting with the NASS Home Page at <http://www.usda.gov/nass/>, click on **Publications**, then click on the **Subscribe by E-mail** button which takes you to the page describing e-mail delivery of reports. Finally, click on **Go to the Subscription Page** and follow the instructions. 2) If you do NOT have Internet access, send an e-mail message to: [usda-reports@usda.mannlib.cornell.edu](mailto:usda-reports@usda.mannlib.cornell.edu). In the body of the message type the word: **list**.

### **AUTOFAX ACCESS**

NASSFax service is available for some reports from your fax machine. Please call 202-720-2000, using the handset attached to your fax. Respond to the voice prompts. Document 0411 is a list of available reports.

-----

### **PRINTED REPORTS OR DATA PRODUCTS**

**CALL OUR TOLL-FREE ORDER DESK: 800-999-6779 (U.S. and Canada)**  
**Other areas, please call 703-605-6220      FAX: 703-605-6900**  
**(Visa, MasterCard, check, or money order acceptable for payment.)**

-----

### **ASSISTANCE**

For **assistance** with general agricultural statistics or further information about NASS or its products or services, contact the **Agricultural Statistics Hotline** at **800-727-9540**, 7:30 a.m. to 4:00 p.m. ET, or e-mail: [nass@nass.usda.gov](mailto:nass@nass.usda.gov).