



Cold Storage

Released September 21, 2001, by the National Agricultural Statistics Service (NASS), Agricultural Statistics Board, U.S. Department of Agriculture. For information on "Cold Storage" call Linda Simpson at (202) 720-8784, office hours 7:00 a.m. to 4:30 p.m. ET.

HIGHLIGHTS

Frozen food stocks in refrigerated warehouses on August 31, 2001, were greater than year earlier levels for orange juice, turkeys and potatoes. Cooler stocks of apples were also higher than a year earlier.

Butter stocks were 23 percent below July 2001 but were 11 percent above a year ago.

Total red meat supplies in freezers were 2 percent above July 2001 but were 18 percent below August 2000. Frozen pork stocks were 2 percent below last month and were 27 percent below last year. Stocks of pork bellies decreased 51 percent from last month and were 63 percent below August 2000 stocks.

Total frozen poultry supplies on August 31, 2001, were down 1 percent from last month and were 12 percent below last year's level. Total stocks of chicken were 2 percent below last month and 23 percent below last year. Total pounds of turkey in freezers increased 1 percent from last month and were 3 percent above last year.

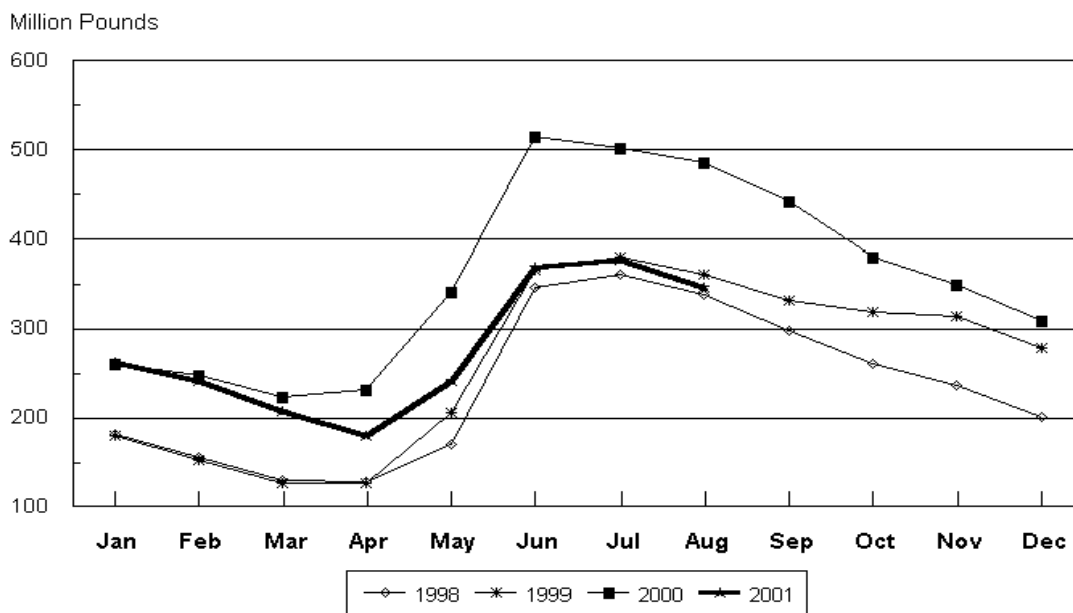
Public cooler occupancy on August 31, 2001, was at 43 percent of capacity, up 4 points from last year. Public freezer occupancy, at 56 percent, was down 4 percentage points from last year.

This page is intentionally blank.

Table of Contents

	Page
Stocks in Cold Storage: By Commodity, United States, August 2001	4
Stocks in Cold Storage: By Commodity, Region, and United States, July 31, 2001	8
Stocks in Cold Storage: By Commodity, Region, and United States, August 31, 2001	12
Public General Warehouses: Cold Storage Space Occupied by Region and United States, August 2001	16
Survey and Estimating Procedures, Revision Policy and Reliability	17

**Frozen Strawberries
Cold Storage Stocks, 1998 - 2001
United States**



**Stocks in Cold Storage: By Commodity,
United States, August 2001**

Commodity	Stocks in All Warehouses			Percent of		Public Warehouse Stocks
	Aug 31, 2000	Jul 31, 2001	Aug 31, 2001	Aug 2000	Jul 2001	Aug 31, 2001
	<i>1,000 Pounds</i>	<i>1,000 Pounds</i>	<i>1,000 Pounds</i>	<i>Percent</i>	<i>Percent</i>	<i>1,000 Lbs</i>
Fresh Fruit						
Apples						
Regular Storage	22,785	28,154	55,096	242	196	
Controlled Atmosphere	105,801	458,481	90,503	86	20	
Total	128,586	486,635	145,599	113	30	1,122
Pears						
Bartlett	140,143	18,425	106,071	76	576	
Other Varieties	7,030	21	143	2	681	
Total	147,173	18,446	106,214	72	576	23,646
Nuts						
Shelled						
Peanuts	453,029	533,587	425,119	94	80	
Pecans	37,444	50,550	47,208	126	93	
Other Shelled	140,564	79,700	69,286	49	87	
Total	631,037	663,837	541,613	86	82	293,071
In-Shell						
Peanuts	17,427	16,105	8,506	49	53	
Pecans	135,358	61,021	34,847	26	57	
Other In-Shell	4,200	8,614	7,995	190	93	
Total	156,985	85,740	51,348	33	60	15,167
Dairy Products						
Butter, Total	101,328	145,486	112,262	111	77	98,390
(Government Owned)	388	815	1,065	274	131	
Natural Cheese						
American, Total	609,658	535,889	507,548	83	95	
(Government Owned)	402	1,600	1,495	372	93	
Swiss	13,443	11,479	10,673	79	93	
Other Natural Cheese	216,797	213,126	203,711	94	96	
Total	839,898	760,494	721,932	86	95	416,465
Eggs, Frozen						
Whites	3,593	2,711	3,375	94	124	
Yolks	565	797	685	121	86	
Whole & Mixed	9,565	11,049	12,393	130	112	
Unclassified	1,209	2,097	1,410	117	67	
Total	14,932	16,654	17,863	120	107	17,311
Frozen Poultry						
Chicken						
Broilers, Fryers						
Roasters (Whole)	33,427	26,124	20,185	60	77	
Hens, Mature Chickens	8,830	9,100	8,959	101	98	
Other	769,552	607,617	598,553	77	99	
Total Chicken	811,809	642,841	627,697	77	98	

See footnote(s) at end of table.

--continued

**Stocks in Cold Storage: By Commodity,
United States, August 2001**

Commodity	Stocks in All Warehouses			Percent of		Public Warehouse Stocks
	Aug 31, 2000	Jul 31, 2001	Aug 31, 2001	Aug 2000	Jul 2001	Aug 31, 2001
	<i>1,000 Pounds</i>	<i>1,000 Pounds</i>	<i>1,000 Pounds</i>	<i>Percent</i>	<i>Percent</i>	<i>1,000 Lbs</i>
Turkeys						
Whole Turkeys	309,018	334,733	336,483	109	101	
Other Turkey	215,909	199,489	205,356	95	103	
Total Turkey	524,927	534,222	541,839	103	101	
Ducks	5,110	8,695	9,283	182	107	
Total Poultry	1,341,846	1,185,758	1,178,819	88	99	994,784
Frozen Fruit						
Apples	59,792	55,314	45,271	76	82	
Apricots	13,987	15,139	12,797	91	85	
Blackberries, Total	28,686	35,043	36,780	128	105	
IQF	17,859	20,046	20,894	117	104	
Pails and Tubs	2,221	4,567	4,993	225	109	
Barrels, 400 lbs net	6,962	9,005	9,393	135	104	
Concentrate	1,644	1,425	1,500	91	105	
Blueberries	109,252	62,930	125,826	115	200	
Boysenberries	6,224	5,786	4,646	75	80	
Cherries, Tart (RTP)	160,497	158,183	181,066	113	114	
Cherries, Tart (Juice)	2,571	2,647	3,815	148	144	
Cherries, Sweet	15,736	20,131	19,536	124	97	
Grapes	2,878	2,543	2,576	90	101	
Peaches	73,776	28,858	67,564	92	234	
Raspberries, Black	3,392	4,587	4,379	129	95	
Raspberries, Red, Total	75,738	74,994	70,802	93	94	
IQF	20,712	25,627	23,703	114	92	
Pails and Tubs	19,988	16,325	14,694	74	90	
Barrels, 400 lbs net	33,408	31,172	31,074	93	100	
Concentrate	1,630	1,870	1,331	82	71	
Strawberries, Total	486,310	376,663	346,804	71	92	
Other Frozen Fruit	263,739	340,817	226,196	86	66	
Total	1,302,578	1,183,635	1,148,058	88	97	906,952
Frozen Juice						
Orange Juice Conc. ¹	1,457,682	1,913,157	1,691,856	116	88	
(Gallon Equivalent)	147,300	193,326	170,964			
Other Juice Concentrate	317,336	292,592	291,701	92	100	
Total	1,775,018	2,205,749	1,983,557	112	90	233,342

See footnote(s) at end of table.

--continued

**Stocks in Cold Storage: By Commodity,
United States, August 2001**

Commodity	Stocks in All Warehouses			Percent of		Public Warehouse Stocks
	Aug 31, 2000	Jul 31, 2001	Aug 31, 2001	Aug 2000	Jul 2001	Aug 31, 2001
	<i>1,000 Pounds</i>	<i>1,000 Pounds</i>	<i>1,000 Pounds</i>	<i>Percent</i>	<i>Percent</i>	<i>1,000 Lbs</i>
Frozen Vegetables						
Asparagus	14,661	14,476	13,877	95	96	
Limas, Fordhook	9,436	5,564	10,133	107	182	
Limas, Baby	24,817	14,238	21,602	87	152	
Green Beans, Reg. Cut	163,366	95,986	187,472	115	195	
Green Beans, Fr. Style	36,101	19,708	26,101	72	132	
Broccoli, Spears	34,587	33,372	29,540	85	89	
Broccoli, Chopped & Cut	102,700	84,445	78,648	77	93	
Brussels Sprouts	13,511	10,306	8,854	66	86	
Carrots, Diced	27,863	54,148	46,716	168	86	
Carrots, Other	123,746	96,230	102,714	83	107	
Cauliflower	33,441	26,502	21,324	64	80	
Corn, Cut	208,672	100,255	217,599	104	217	
Corn, Cob	170,690	75,563	160,943	94	213	
Mixed Vegetables	49,335	50,301	49,223	100	98	
Okra	64,563	48,248	49,583	77	103	
Onion Rings	12,001	6,801	7,895	66	116	
Onions, Other	40,792	29,943	28,661	70	96	
Blackeye Peas	3,025	3,331	2,961	98	89	
Green Peas	429,250	379,665	364,577	85	96	
Peas & Carrots Mixed	8,867	9,144	9,301	105	102	
Spinach	79,499	88,050	77,112	97	88	
Squash, Summer/Zucchini	48,285	35,755	40,927	85	114	
Southern Greens	31,428	28,942	26,414	84	91	
Other Vegetables	315,592	262,104	301,437	96	115	
Total	2,046,228	1,573,077	1,883,614	92	120	1,379,895
Potatoes						
French Fries	923,398	1,011,697	955,040	103	94	
Other Frozen	262,309	270,886	243,781	93	90	
Total	1,185,707	1,282,583	1,198,821	101	93	885,968

See footnote(s) at end of table.

--continued

**Stocks in Cold Storage: By Commodity,
United States, August 2001 (Continued)**

Commodity	Stocks in All Warehouses			Percent of		Public Warehouse Stocks
	Aug 31, 2000	Jul 31, 2001	Aug 31, 2001	Aug 2000	Jul 2001	Aug 31, 2001
	<i>1,000 Pounds</i>	<i>1,000 Pounds</i>	<i>1,000 Pounds</i>	<i>Percent</i>	<i>Percent</i>	<i>1,000 Lbs</i>
Meat						
Frozen Beef						
Boneless ²	343,561	306,296	319,917	93	104	
Beef Cuts ³	55,242	40,832	47,826	87	117	
Total	398,803	347,128	367,743	92	106	366,331
(Government Owned)	1,938	1,687	1,944	100	115	
Frozen Pork						
Picnics, Bone-in	9,887	12,669	10,923	110	86	
Hams, Total	140,150	86,951	91,370	65	105	88,622
Bone-in	78,606	44,237	52,555	67	119	52,027
Boneless ⁴	61,544	42,714	38,815	63	91	36,595
Bellies	33,005	24,996	12,162	37	49	
Loins, Total	17,192	21,520	22,292	130	104	20,610
Bone-in	5,472	9,627	7,942	145	82	
Boneless ⁵	11,720	11,893	14,350	122	121	
Ribs ⁶	27,045	29,759	26,091	96	88	
Butts	7,312	4,897	6,864	94	140	
Trimmings ⁷	40,577	38,667	32,692	81	85	
Other ⁸	92,104	54,964	59,282	64	108	
Variety Meats ⁹	61,305	49,394	52,185	85	106	
Unclassified ¹⁰	27,015	15,716	17,455	65	111	
Total	455,592	339,533	331,316	73	98	297,229
(Government Owned)	4,189	3,507	2,050	49	58	
Other						
Veal	4,613	3,038	3,677	80	121	
Lamb & Mutton	14,042	15,744	15,452	110	98	
Total	18,655	18,782	19,129	103	102	18,834
Canned						
Canned Hams	7,015	7,212	6,909	98	96	
Other Canned Meat	950	536	862	91	161	
Total	7,965	7,748	7,771	98	100	7,725
Total	881,015	713,191	725,959	82	102	690,119
Miscellaneous						
Cooler	701,131	672,265	775,595	111	115	381,134
Freezer	2,178,539	2,019,924	2,035,106	93	101	1,949,492
Total	2,879,670	2,692,189	2,810,701	98	104	2,330,626
Commodities						
Stored in Coolers	2,612,775	2,709,986	2,363,077	90	87	1,323,138
Stored in Freezers	10,819,226	10,217,513	10,191,968	94	100	7,148,528
Total	13,432,001	12,927,499	12,555,045	93	97	8,471,666

¹ Adjusted to 42.0 degrees Brix equivalent (9.896 pounds per gallon).

² Includes all boxed boneless beef, such as ground beef, roasts, steaks, loins, strips, rounds, trimmings, etc. Variety meats (edible offal), such as tongues, livers, hearts, kidneys, and other organs removed from slaughtered beef, are included as miscellaneous freezer stocks.

³ Includes all boxed primal beef cuts, bone-in.

⁴ Includes full ham, bone removed and individual muscles separated.

⁵ Includes pork tenderloins.

⁶ Includes spareribs and backribs.

⁷ Includes 42% regular trimmings, 72% special trimmings, boneless picnic meat, jowls, neckbone trimmings, blade, cheek, head, and shank meat, etc. Packaged bacon, sausage, and processed items, such as hot dogs and luncheon meats, are included in miscellaneous cooler or freezer stocks.

⁸ Includes ears, tails, feet, neckbones and snouts.

⁹ Includes tongues, kidneys, livers, stomachs, hearts, chitterlings, salivary glands, and other organs removed from slaughtered hogs.

¹⁰ Includes product unable to be classified elsewhere in this report.

**Stocks in Cold Storage: By Commodity, Region,
and United States, July 31, 2001**

Commodity	New England	Middle Atlantic	East North Central	West North Central	South Atlantic
	<i>1,000 Pounds</i>	<i>1,000 Pounds</i>	<i>1,000 Pounds</i>	<i>1,000 Pounds</i>	<i>1,000 Pounds</i>
Total Fresh Apples	40	47,685	9	4	
Nuts					
Shelled					
Peanuts		47	319	30	386,264
Pecans ¹		127			10,461
In-Shell					
Pecans ¹		13			15,081
Dairy Products					
Natural Cheese					
American, Total	24,231	58,899	241,090	101,461	5,025
Other Natural Cheese	416	28,447	102,427	58,395	201
Frozen Poultry					
Chicken					
Broilers, Fryers					
Roasters (Whole)	74	1,832	1,930	799	8,272
Hens, Mature Chickens		339	611	466	4,778
Other	1,191	17,991	15,591	22,368	164,811
Total Chicken	1,265	20,162	18,132	23,633	177,861
Turkeys					
Whole Turkeys	11,493	25,054	30,265	45,587	64,550
Other Turkey	954	11,309	19,905	61,278	62,536
Total Turkey	12,447	36,363	50,170	106,865	127,086
Ducks		387	7,935	154	75
Total Poultry	13,712	56,912	76,237	130,652	305,022
Frozen Fruit					
Apples	32	15,291	27,875	158	405
Blueberries	11,723	6,760	24,304	199	6,491
Cherries, Tart (RSP)	35	9,731	135,786	94	710
Cherries, Sweet		414	11,807	49	4
Peaches	10	1,314	1,712	181	267
Raspberries, Red	122	2,717	1,025	57	104
Strawberries, Total	79	3,498	6,269	844	1,305
Other Frozen Fruit	49,480	10,694	190,125	68	1,139

See footnote(s) at end of table.

--continued

**Stocks in Cold Storage: By Commodity, Region,
and United States, July 31, 2001 (continued)**

Commodity	East South Central	West South Central	Mountain	Pacific	US Total
	<i>1,000 Pounds</i>	<i>1,000 Pounds</i>	<i>1,000 Pounds</i>	<i>1,000 Pounds</i>	<i>1,000 Pounds</i>
Total Fresh Apples		187	4	438,706	486,635
Nuts					
Shelled					
Peanuts	44,863	100,961	135	968	533,587
Pecans ¹	1,296	38,309		357	50,550
In-Shell					
Pecans ¹	2,593	43,314		20	61,021
Dairy Products					
Natural Cheese					
American, Total		505	14,325	90,353	535,889
Other Natural Cheese	169	466	6,577	16,028	213,126
Frozen Poultry					
Chicken					
Broilers, Fryers					
Roasters (Whole)	2,214	8,312	321	2,370	26,124
Hens, Mature Chickens	715	321	39	1,831	9,100
Other	113,471	237,717	1,888	32,589	607,617
Total Chicken	116,400	246,350	2,248	36,790	642,841
Turkeys					
Whole Turkeys	9,477	73,905	15,688	58,714	334,733
Other Turkey	478	18,960	8,569	15,500	199,489
Total Turkey	9,955	92,865	24,257	74,214	534,222
Ducks		33		111	8,695
Total Poultry	126,355	339,248	26,505	111,115	1,185,758
Frozen Fruit					
Apples	55	841	19	10,638	55,314
Blueberries	104	825	104	12,420	62,930
Cherries, Tart (RTP)	61	64	2,733	8,969	158,183
Cherries, Sweet	3	323	549	6,982	20,131
Peaches	76	636	15	24,647	28,858
Raspberries, Red	69	765	8	70,127	74,994
Strawberries, Total	1,229	32,365	243	330,831	376,663
Other Frozen Fruit	286	3,012	3,919	82,094	340,817

See footnote(s) at end of table.

--continued

**Stocks in Cold Storage: By Commodity, Region,
and United States, July 31, 2001 (continued)**

Commodity	New England	Middle Atlantic	East North Central	West North Central	South Atlantic
	<i>1,000 Pounds</i>	<i>1,000 Pounds</i>	<i>1,000 Pounds</i>	<i>1,000 Pounds</i>	<i>1,000 Pounds</i>
Frozen Juice					
Orange Juice Conc. ²	25		950	107	1,834,501
Other Juice Concentrate	142	14,376	11,001	1,941	127,579
Frozen Vegetables ³					
Asparagus		638	7,692	17	380
Limas, Fordhook		1,273	632	155	1,127
Limas, Baby		2,934	2,188	237	1,927
Green Beans, Reg. Cut		15,326	22,430	2,780	5,038
Green Beans, Fr. Style		4,007	4,133	173	341
Broccoli, Spears		6,215	3,827	198	1,659
Broccoli, Chopped & Cut		5,393	8,105	11,821	7,358
Brussels Sprouts		1,971	1,362	306	628
Carrots, Diced		8,940	12,792	514	4,039
Carrots, Other		9,988	14,537	721	4,421
Cauliflower		1,984	2,344	789	1,028
Corn, Cut		14,440	24,170	6,805	6,135
Corn, Cob		13,009	15,810	3,249	3,123
Mixed Vegetables		6,517	11,788	1,235	3,193
Okra		2,169	901	9,412	13,677
Onion Rings		359	2,578	1,336	570
Onions, Other		4,982	5,348	217	3,527
Blackeye Peas		146	88	22	2,008
Green Peas		64,669	51,295	9,650	9,569
Peas & Carrots Mixed		1,230	1,695	42	1,035
Spinach		18,252	4,879	1,797	6,545
Squash, Summer/Zucchini		3,584	4,119	656	5,430
Southern Greens		3,188	826	761	9,349
Other Vegetables		49,474	33,364	10,071	23,886
Potatoes					
French Fries	28,074	32,389	42,571	111,336	27,455
Other Frozen	6,313	12,657	45,737	12,054	3,316
Meat					
Frozen Beef					
Boneless ⁴	3,142	27,972	24,188	94,776	25,997
Beef Cuts ⁵	3,779	734	5,613	7,819	2,935
Frozen Pork					
Ribs ⁶	203	986	7,626	13,862	3,582
Trimmings ⁷	183	1,029	8,189	19,588	5,988
Other ⁸	1,697	1,668	12,474	21,144	7,788
Other					
Veal	95	639	1,368	184	61
Lamb & Mutton	353	3,712	820	4,759	618

See footnote(s) at end of table.

--continued

**Stocks in Cold Storage: By Commodity, Region,
and United States, July 31, 2001 (continued)**

Commodity	East South Central	West South Central	Mountain	Pacific	US Total
	<i>1,000 Pounds</i>	<i>1,000 Pounds</i>	<i>1,000 Pounds</i>	<i>1,000 Pounds</i>	<i>1,000 Pounds</i>
Frozen Juice					
Orange Juice Concentrate	63	8,372	1,889	67,250	1,913,157
Other Juice Concentrate	392	26,975	358	109,828	292,592
Frozen Vegetables ³					
Asparagus		553	144	5,052	14,476
Limas, Fordhook		245	2	2,130	5,564
Limas, Baby		539	1,030	5,383	14,238
Green Beans, Reg. Cut		2,405	144	47,863	95,986
Green Beans, Fr. Style		449	58	10,547	19,708
Broccoli, Spears		8,346	97	13,030	33,372
Broccoli, Chopped & Cut		18,483	868	32,417	84,445
Brussels Sprouts		472	4	5,563	10,306
Carrots, Diced		1,516	41	26,306	54,148
Carrots, Other		14,942	479	51,142	96,230
Cauliflower		4,506	141	15,710	26,502
Corn, Cut		2,227	236	46,242	100,255
Corn, Cob		1,441	4,779	34,152	75,563
Mixed Vegetables		4,027	551	22,990	50,301
Okra		21,097	2	990	48,248
Onion Rings		694	470	794	6,801
Onions, Other		2,457	1,101	12,311	29,943
Blackeye Peas		813		254	3,331
Green Peas		1,899	24,395	218,188	379,665
Peas & Carrots Mixed		591	26	4,525	9,144
Spinach		15,354	627	40,596	88,050
Squash, Summer/Zucchini		4,627	639	16,700	35,755
Southern Greens		13,807		1,011	28,942
Other Vegetables		30,827	4,177	110,305	262,104
Potatoes					
French Fries	3,998	17,142	253,529	495,203	1,011,697
Other Frozen	30	5,637	56,851	128,291	270,886
Meat					
Frozen Beef					
Boneless ⁴	7,354	57,507	2,276	63,084	306,296
Beef Cuts ⁵	2,974	7,684	1,752	7,542	40,832
Frozen Pork					
Ribs ⁶	1,183	1,112	96	1,109	29,759
Trimnings ⁷	124	3,107	14	445	38,667
Other ⁸	2,908	3,827	214	3,244	54,964
Other					
Veal	2	79		610	3,038
Lamb & Mutton		185	1,031	4,266	15,744

¹ East North Central combined with South Atlantic. Mountain and West North Central combined with West South Central.

² Middle Atlantic combined with South Atlantic.

³ New England combined with Middle Atlantic. East South Central combined with South Atlantic.

⁴ Includes all boxed boneless beef, such as ground beef, roasts, steaks, loins, strips, rounds, trimmings, etc. Variety meats (edible offal), such as tongues, livers, hearts, kidneys, and other organs removed from slaughtered beef, are included as miscellaneous freezer stocks.

⁵ Includes all boxed primal beef cuts, bone-in.

⁶ Includes spareribs and backribs.

⁷ Includes 42% regular trimmings, 72% special trimmings, boneless picnic meat, jowls, neckbone trimmings, blade, cheek, head, and shank meat, etc. Packaged bacon, sausage, and processed items, such as hot dogs and luncheon meats, are included in miscellaneous cooler or freezer stocks.

⁸ Includes ears, tails, feet, neckbones and snouts.

⁹ Includes tongues, kidneys, livers, stomachs, hearts, chitterlings, salivary glands, and other organs removed from slaughtered hogs.

¹⁰ Includes product unable to be classified elsewhere in this report.

**Stocks in Cold Storage: By Commodity, Region,
and United States, August 31, 2001**

Commodity	New England	Middle Atlantic	East North Central	West North Central	South Atlantic
	<i>1,000 Pounds</i>	<i>1,000 Pounds</i>	<i>1,000 Pounds</i>	<i>1,000 Pounds</i>	<i>1,000 Pounds</i>
Total Fresh Apples	37	20,421		3	
Nuts					
Shelled					
Peanuts		17	133	24	302,796
Pecans ¹		246			9,879
In-Shell					
Pecans ¹		16			6,808
Dairy Products					
Natural Cheese					
American, Total	23,032	56,606	226,295	95,410	4,790
Other Natural Cheese	430	36,879	85,543	60,398	204
Frozen Poultry					
Chicken					
Broilers, Fryers					
Roasters (Whole)	63	1,819	306	926	5,966
Hens, Mature Chickens		315	617	421	4,214
Other	1,637	17,043	15,274	20,830	169,407
Total Chicken	1,700	19,177	16,197	22,177	179,587
Turkeys					
Whole Turkeys	11,444	28,501	30,907	48,933	55,433
Other Turkey	1,064	11,222	16,865	54,135	75,032
Total Turkey	12,508	39,723	47,772	103,068	130,465
Ducks		312	8,578	161	78
Total Poultry	14,208	59,212	72,547	125,406	310,130
Frozen Fruit					
Apples	26	12,310	22,970	167	316
Blueberries	25,785	7,883	55,076	267	6,234
Cherries, Tart (RTP)	34	8,799	158,627	90	647
Cherries, Sweet		483	13,029	51	8
Peaches	23	2,554	3,498	77	521
Raspberries, Red	6	1,778	1,055	130	93
Strawberries, Total	81	3,547	5,671	702	1,208
Other Frozen Fruit	36,641	8,818	98,027	61	763

See footnote(s) at end of table.

--continued

**Stocks in Cold Storage: By Commodity, Region,
and United States, August 31, 2001 (continued)**

Commodity	East South Central	West South Central	Mountain	Pacific	US Total
	<i>1,000 Pounds</i>	<i>1,000 Pounds</i>	<i>1,000 Pounds</i>	<i>1,000 Pounds</i>	<i>1,000 Pounds</i>
Total Fresh Apples		207	57	124,874	145,599
Nuts					
Shelled					
Peanuts	33,909	87,361	114	765	425,119
Pecans ¹	1,142	35,612		329	47,208
In-Shell					
Pecans ¹	2,203	25,820			34,847
Dairy Products					
Natural Cheese					
American, Total		332	13,655	87,428	507,548
Other Natural Cheese	164	186	6,524	13,383	203,711
Frozen Poultry					
Chicken					
Broilers, Fryers					
Roasters (Whole)	2,341	6,764	273	1,727	20,185
Hens, Mature Chickens	1,842	377	37	1,136	8,959
Other	105,855	233,584	1,867	33,056	598,553
Total Chicken	110,038	240,725	2,177	35,919	627,697
Turkeys					
Whole Turkeys	10,251	64,767	16,460	69,787	336,483
Other Turkey	595	19,405	8,481	18,557	205,356
Total Turkey	10,846	84,172	24,941	88,344	541,839
Ducks		38		116	9,283
Total Poultry	120,884	324,935	27,118	124,379	1,178,819
Frozen Fruit					
Apples	112	627	30	8,713	45,271
Blueberries	186	872	199	29,324	125,826
Cherries, Tart (RTP)	61	93	2,646	10,069	181,066
Cherries, Sweet	3	236	547	5,179	19,536
Peaches	136	893	42	59,820	67,564
Raspberries, Red	59	128	6	67,547	70,802
Strawberries, Total	1,212	24,293	440	309,650	346,804
Other Frozen Fruit	295	4,936	4,902	71,753	226,196

See footnote(s) at end of table.

--continued

**Stocks in Cold Storage: By Commodity, Region,
and United States, August 31, 2001 (continued)**

Commodity	New England	Middle Atlantic	East North Central	West North Central	South Atlantic
	<i>1,000 Pounds</i>	<i>1,000 Pounds</i>	<i>1,000 Pounds</i>	<i>1,000 Pounds</i>	<i>1,000 Pounds</i>
Frozen Juice					
Orange Juice Conc. ²	20		387	88	1,619,336
Other Juice Concentrate	109	14,251	9,203	1,880	125,823
Frozen Vegetables ³					
Asparagus		679	7,372	72	327
Limas, Fordhook		1,586	828	121	782
Limas, Baby		3,601	4,012	178	2,131
Green Beans, Reg. Cut		27,390	41,324	4,235	7,829
Green Beans, Fr. Style		6,704	5,131	194	417
Broccoli, Spears		5,445	3,170	159	1,796
Broccoli, Chopped & Cut		5,468	8,132	13,029	7,493
Brussels Sprouts		1,809	1,207	289	502
Carrots, Diced		7,971	11,478	679	3,420
Carrots, Other		9,518	12,538	757	4,612
Cauliflower		1,630	1,354	516	779
Corn, Cut		29,730	47,302	13,615	6,147
Corn, Cob		20,912	28,358	11,331	3,851
Mixed Vegetables		6,997	11,232	717	2,707
Okra		2,572	913	10,299	12,368
Onion Rings		432	2,878	1,918	703
Onions, Other		4,121	6,353	256	3,471
Blackeye Peas		163	67	44	1,720
Green Peas		57,304	46,621	11,335	8,595
Peas & Carrots Mixed		1,330	1,564	41	1,319
Spinach		15,829	4,337	1,591	5,579
Squash, Summer/Zucchini		2,784	8,987	708	4,601
Southern Greens		3,019	701	704	7,519
Other Vegetables		53,330	34,577	11,713	27,740
Potatoes					
French Fries	26,109	28,633	38,717	80,920	24,296
Other Frozen	5,954	11,876	40,480	11,825	2,662
Meat					
Frozen Beef					
Boneless ⁴	7,379	28,545	29,494	98,583	24,618
Beef Cuts ⁵	4,096	872	11,450	7,342	3,110
Frozen Pork					
Ribs ⁶	167	827	7,852	11,350	3,204
Trimmings ⁷	145	786	7,971	13,611	5,476
Other ⁸	1,865	1,887	12,631	23,384	8,891
Other					
Veal	98	672	1,321	369	59
Lamb & Mutton	343	3,982	786	4,495	600

See footnote(s) at end of table.

--continued

**Stocks in Cold Storage: By Commodity, Region,
and United States, August 31, 2001 (continued)**

Commodity	East South Central	West South Central	Mountain	Pacific	US Total
	<i>1,000 Pounds</i>	<i>1,000 Pounds</i>	<i>1,000 Pounds</i>	<i>1,000 Pounds</i>	<i>1,000 Pounds</i>
Frozen Juice					
Orange Juice Concentrate	52	9,740	1,681	60,552	1,691,856
Other Juice Concentrate	385	25,661	584	113,805	291,701
Frozen Vegetables ³					
Asparagus		510	99	4,818	13,877
Limas, Fordhook		433	1	6,382	10,133
Limas, Baby		496	2,122	9,062	21,602
Green Beans, Reg. Cut		4,346	119	102,229	187,472
Green Beans, Fr. Style		581	52	13,022	26,101
Broccoli, Spears		7,164	17	11,789	29,540
Broccoli, Chopped & Cut		11,016	793	32,717	78,648
Brussels Sprouts		395	8	4,644	8,854
Carrots, Diced		1,115	47	22,006	46,716
Carrots, Other		13,067	423	61,799	102,714
Cauliflower		3,588	107	13,350	21,324
Corn, Cut		2,966	933	116,906	217,599
Corn, Cob		1,983	10,137	84,371	160,943
Mixed Vegetables		3,615	294	23,661	49,223
Okra		22,490		941	49,583
Onion Rings		747	424	793	7,895
Onions, Other		2,256	1,277	10,927	28,661
Blackeye Peas		747		220	2,961
Green Peas		1,909	23,322	215,491	364,577
Peas & Carrots Mixed		580	37	4,430	9,301
Spinach		13,115	678	35,983	77,112
Squash, Summer/Zucchini		5,607	492	17,748	40,927
Southern Greens		13,027		1,444	26,414
Other Vegetables		36,047	5,510	132,520	301,437
Potatoes					
French Fries	3,878	13,142	243,540	495,805	955,040
Other Frozen	25	3,377	52,570	115,012	243,781
Meat					
Frozen Beef					
Boneless ⁴	7,414	60,715	2,503	60,666	319,917
Beef Cuts ⁵	2,951	9,643	1,549	6,813	47,826
Frozen Pork					
Ribs ⁶	996	662	67	966	26,091
Trimming ⁷	112	4,168	12	411	32,692
Other ⁸	3,168	3,511	347	3,598	59,282
Other					
Veal	2	119		1,037	3,677
Lamb & Mutton		224	986	4,036	15,452

¹ East North Central combined with South Atlantic. Mountain and West North Central Combined with West South Central.

² Middle Atlantic combined with South Atlantic.

³ New England combined with Middle Atlantic. East South Central combined with South Atlantic.

⁴ Includes all boxed boneless beef, such as ground beef, roasts, steaks, loins, strips, rounds, trimmings, etc. Variety meats (edible offal), such as tongues, livers, hearts, kidneys, and other organs removed from slaughtered beef, are included as miscellaneous freezer stocks.

⁵ Includes all boxed primal beef cuts, bone-in.

⁶ Includes spareribs and backribs.

⁷ Includes 42% regular trimmings, 72% special trimmings, boneless picnic meat, jowls, neckbone trimmings, blade, cheek, head, and shank meat, etc. Packaged bacon, sausage, and processed items, such as hot dogs and luncheon meats, are included in miscellaneous cooler or freezer stocks.

⁸ Includes ears, tails, feet, neckbones and snouts.

⁹ Includes tongues, kidneys, livers, stomachs, hearts, chitterlings, salivary glands, and other organs removed from slaughtered hogs.

¹⁰ Includes product unable to be classified elsewhere in this report.

**Public General Warehouses: Cold Storage Space Occupied
by Region and United States, August 2001**

Region	Cooler				Freezer			
	Usable Space	Usable Space Occupied			Usable Space	Usable Space Occupied		
	Aug 31 2001	Aug 31 2000	Jul 31 2001	Aug 31 2001	Aug 31 2001	Aug 31 2000	Jul 31 2001	Aug 31 2001
	<i>1,000 Cu Ft</i>	<i>Percent</i>	<i>Percent</i>	<i>Percent</i>	<i>1,000 Cu Ft</i>	<i>Percent</i>	<i>Percent</i>	<i>Percent</i>
New England	2,200	50	80	75	19,649	71	62	65
Middle Atlantic	42,131	42	69	73	109,417	67	69	74
E. North Central	62,536	36	43	45	208,018	46	44	45
W. North Central	45,233	35	33	36	149,324	54	51	53
South Atlantic	48,493	40	39	34	186,511	58	54	57
E. South Central	9,435	45	44	49	71,338	38	43	41
W. South Central	21,959	36	26	22	134,138	65	56	52
Mountain	5,840	52	32	36	52,267	57	55	52
Pacific	43,771	40	35	38	286,992	73	59	64
US	281,598	39	42	43	1,217,654	60	54	56

Cold Storage Regions



Survey Procedures: Questionnaires are mailed about the 24th of each month to all operators on the list of approximately 1,400 public and private cold storage warehouses. In addition, apple data are obtained from special surveys and other sources (State Departments of Agriculture, U.S. Apple Association, etc.). All survey data represent stocks as of the end of the month.

Data are collected from warehouses artificially cooled to a temperature of 50 degrees Fahrenheit or lower, and whose food products are normally stored for 30 days or more. All food items in these facilities are reported regardless of the number of days stored at the time of the report. Also included are specialized storage facilities meeting the 30 day requirement, such as fruit houses, dairy manufacturing plants, frozen fruit, fruit juice, and vegetable processors, and poultry and meat packing plants. Excluded are stocks in space maintained by wholesalers, jobbers, distributors, chain stores, locker plants containing individual lockers, meat packer branch houses, and frozen food processors whose entire inventories are turned over more than once a month.

Estimating Procedures: Data for reporting firms are added to estimates for non-reporting firms to obtain regional and National totals. Estimates for non-reporting firms are obtained by multiplying the previous month's figure by a percent change from the previous month. The percent change is calculated for each item from totals of the current and previous month summed from firms that reported both months.

Revision Policy: Data are revised the following month based on late reports or corrected data. Final figures are published in the annual summary in February of the following year.

Reliability: Reports are received from 900 firms each month which represent about 70 percent of the total capacity. Firms that are not on the list or firms who have never reported are not represented in the data. Monthly data can vary due to different firms reporting month to month. Survey data are also subject to non-sampling errors such as omissions and mistakes in reporting and in processing the data. While these errors cannot be measured directly, they are minimized by carefully reviewing all reported data for consistency and reasonableness.

The next "Cold Storage" report will be released at 3 p.m. ET on October 19, 2001.

The United States Department of Agriculture (USDA) prohibits discrimination in all its programs on the basis of race, color, national origin, gender, religion, age, disability, political beliefs, sexual orientation, and marital or family status. (Not all prohibited bases apply to all programs.) Persons with disabilities who require alternative means for communication of program information (braille, large print, audiotape, etc.) should contact the USDA's TARGET Center at 202-720-2600 (voice and TDD).

To file a complaint of discrimination, write USDA, Director, Office of Civil Rights, Room 326-W, Whitten Building, 1400 Independence Avenue, SW, Washington, D.C., 20250-9410, or call 202-720-5964 (voice or TDD). USDA is an equal opportunity provider and employer.

ACCESS TO REPORTS!!

For your convenience, there are several ways to obtain NASS reports, data products, and services:

INTERNET ACCESS

All NASS reports are available free of charge on the worldwide Internet. For access, connect to the Internet and go to the NASS Home Page at: <http://www.usda.gov/nass/>. Select "Today's Reports" or Publications and then Reports by Calendar or Publications and then Search, by Title or Subject.

E-MAIL SUBSCRIPTION

There are two options for subscribing via e-mail. All NASS reports are available by subscription free of charge direct to your e-mail address. 1) Starting with the NASS Home Page at <http://www.usda.gov/nass/>, click on **Publications**, then click on the **Subscribe by E-mail** button which takes you to the page describing e-mail delivery of reports. Finally, click on **Go to the Subscription Page** and follow the instructions. 2) If you do NOT have Internet access, send an e-mail message to: usda-reports@usda.mannlib.cornell.edu. In the body of the message type the word: **list**.

AUTOFAX ACCESS

NASSFax service is available for some reports from your fax machine. Please call 202-720-2000, using the handset attached to your fax. Respond to the voice prompts. Document 0411 is a list of available reports.

PRINTED REPORTS OR DATA PRODUCTS

CALL OUR TOLL-FREE ORDER DESK: 800-999-6779 (U.S. and Canada)
Other areas, please call 703-605-6220 FAX: 703-605-6900
(Visa, MasterCard, check, or money order acceptable for payment.)

ASSISTANCE

For **assistance** with general agricultural statistics or further information about NASS or its products or services, contact the **Agricultural Statistics Hotline** at **800-727-9540**, 7:30 a.m. to 4:00 p.m. ET, or e-mail: nass@nass.usda.gov.

USDA to Hold Public Forum
October 15, 2001

Holiday Inn Mart Plaza
Chicago, Illinois

The National Agricultural Statistics Service will be organizing an open forum for data users. The purpose will be to provide updates on pending changes in the various statistical and information programs and to seek comments and input from data users. The other USDA agencies to be represented will include the Agricultural Marketing Service, the Economic Research Service, the Foreign Agricultural Service, and the World Agricultural Outlook Board. The Foreign Trade Division from the Census Bureau and the National Weather Service will also be included in the meeting.

For registration details for the Data User's meeting, see the NASS home page at <http://www.usda.gov/nass/> Or contact Karlyn McCutcheon (NASS) at (202) 690-8141 or at karlyn_mccutcheon@nass.usda.gov.

This Public Forum precedes an Industry Outlook meeting that will be held at the same location on October 16, 2001. The outlook meeting brings together analysts from the various commodity sectors to discuss the outlook situation. For more information about the outlook meeting and to register for it contact Terry Francl at (847) 685-8769 or at terry@fb.org.