



Cold Storage

Released November 20, 2001, by the National Agricultural Statistics Service (NASS), Agricultural Statistics Board, U.S. Department of Agriculture. For information on "Cold Storage" call Linda Simpson at (202) 720-8784, office hours 7:00 a.m. to 4:30 p.m. ET.

HIGHLIGHTS

Frozen food stocks in refrigerated warehouses on October 31, 2001, were greater than year earlier levels for orange juice and turkeys.

Butter stocks were 10 percent below September 2001 but were 63 percent above a year ago.

Total red meat supplies in freezers were 10 percent above September 2001 but were 1 percent below October 2000. Frozen pork stocks were 17 percent above last month but were 2 percent below last year. Stocks of pork bellies were 315 percent above last month and were 37 percent above October 2000 stocks.

Total frozen poultry supplies on October 31, 2001, were down 3 percent from last month and were 8 percent below last year's level. Total stocks of chicken were 2 percent above last month but were 17 percent below last year. Total pounds of turkey in freezers decreased 9 percent from last month but were 4 percent above last year.

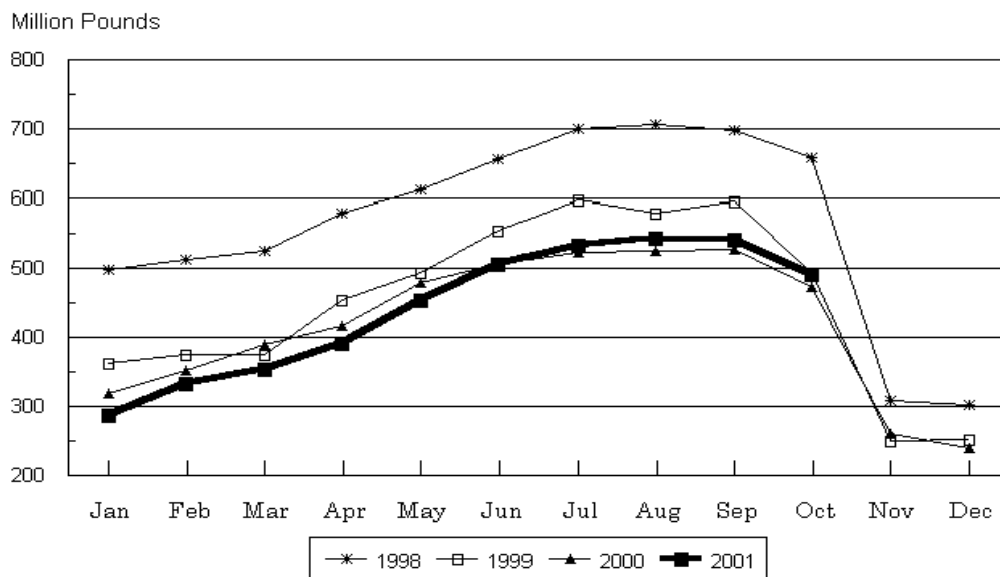
Public cooler occupancy on October 31, 2001, was at 43 percent of capacity, up 7 points from last year. Public freezer occupancy, at 57 percent, was down 6 percentage points from last year.

This page is intentionally blank.

Table of Contents

	Page
Stocks in Cold Storage: By Commodity, United States, October 2001	4
Stocks in Cold Storage: By Commodity, Region, and United States, September 30, 2001	8
Stocks in Cold Storage: By Commodity, Region, and United States, October 31, 2001	12
Public General Warehouses: Cold Storage Space Occupied by Region and United States, October 2001	16
Apples in Cold Storage: By State and United States, October 31, 2000 and 2001	17
Survey and Estimating Procedures, Revision Policy and Reliability	18

Total Frozen Turkeys
Cold Storage Stocks, 1998-2001
United States



**Stocks in Cold Storage: By Commodity,
United States, October 2001**

Commodity	Stocks in All Warehouses			Percent of		Public Warehouse Stocks
	Oct 31, 2000	Sep 30, 2001	Oct 31, 2001	Oct 2000	Sep 2001	Oct 31, 2001
	<i>1,000 Pounds</i>	<i>1,000 Pounds</i>	<i>1,000 Pounds</i>	<i>Percent</i>	<i>Percent</i>	<i>1,000 Lbs</i>
Fresh Fruit						
Apples						
Regular Storage	1,962,547	959,272	1,782,540	91	186	
Controlled Atmosphere	4,385,306	1,847,115	3,582,845	82	194	
Total	6,347,853	2,806,387	5,365,385	85	191	16,818
Pears						
Bartlett	65,413	138,669	73,688	113	53	
Other Varieties	473,501	415,005	444,485	94	107	
Total	538,914	553,674	518,173	96	94	4,954
Nuts						
Shelled						
Peanuts	306,152	338,495	386,380	126	114	
Pecans	27,216	42,021	34,299	126	82	
Other Shelled	142,996	79,549	86,108	60	108	
Total	476,364	460,065	506,787	106	110	254,954
In-Shell						
Peanuts	12,899	5,016	6,577	51	131	
Pecans	105,915	15,815	18,212	17	115	
Other In-Shell	25,514	9,475	19,601	77	207	
Total	144,328	30,306	44,390	31	146	22,712
Dairy Products						
Butter, Total	58,326	105,857	95,019	163	90	82,257
(Government Owned)	330	331	344	104	104	
Natural Cheese						
American, Total	546,708	487,559	458,540	84	94	
(Government Owned)	711	1,229	992	140	81	
Swiss	15,777	10,439	10,723	68	103	
Other Natural Cheese	169,492	210,732	199,323	118	95	
Total	731,977	708,730	668,586	91	94	388,054
Eggs, Frozen						
Whites	3,720	4,251	3,024	81	71	
Yolks	781	488	575	74	118	
Whole & Mixed	11,068	11,274	11,272	102	100	
Unclassified	1,021	1,401	1,482	145	106	
Total	16,590	17,414	16,353	99	94	15,743
Frozen Poultry						
Chicken						
Broilers, Fryers						
Roasters (Whole)	32,154	22,308	21,541	67	97	
Hens, Mature Chickens	8,614	8,181	5,972	69	73	
Other	721,714	594,377	608,669	84	102	
Total Chicken	762,482	624,866	636,182	83	102	

See footnote(s) at end of table.

--continued

**Stocks in Cold Storage: By Commodity,
United States, October 2001**

Commodity	Stocks in All Warehouses			Percent of		Public Warehouse Stocks
	Oct 31, 2000	Sep 30, 2001	Oct 31, 2001	Oct 2000	Sep 2001	Oct 31, 2001
	<i>1,000 Pounds</i>	<i>1,000 Pounds</i>	<i>1,000 Pounds</i>	<i>Percent</i>	<i>Percent</i>	<i>1,000 Lbs</i>
Turkeys						
Whole Turkeys	304,052	346,967	304,548	100	88	
Other Turkey	169,849	195,008	188,982	111	97	
Total Turkey	473,901	541,975	493,530	104	91	
Ducks	4,565	10,133	9,296	204	92	
Total Poultry	1,240,948	1,176,974	1,139,008	92	97	1,030,088
Frozen Fruit						
Apples	56,189	36,202	38,321	68	106	
Apricots	11,357	11,316	9,652	85	85	
Blackberries, Total	27,204	35,051	31,096	114	89	
IQF	18,115	19,545	17,639	97	90	
Pails and Tubs	2,148	4,792	4,287	200	89	
Barrels, 400 lbs net	4,502	8,836	7,714	171	87	
Concentrate	2,439	1,878	1,456	60	78	
Blueberries	99,301	134,814	120,953	122	90	
Boysenberries	5,407	3,846	3,565	66	93	
Cherries, Tart (RTP)	133,210	155,033	144,014	108	93	
Cherries, Tart (Juice)	2,233	3,435	2,725	122	79	
Cherries, Sweet	14,101	18,064	16,359	116	91	
Grapes	6,677	4,113	5,915	89	144	
Peaches	90,588	83,669	77,501	86	93	
Raspberries, Black	2,658	4,030	3,348	126	83	
Raspberries, Red, Total	62,733	59,736	54,431	87	91	
IQF	17,997	22,093	21,488	119	97	
Pails and Tubs	17,377	11,942	10,885	63	91	
Barrels, 400 lbs net	25,584	24,441	20,839	81	85	
Concentrate	1,775	1,260	1,219	69	97	
Strawberries, Total	381,465	312,681	299,750	79	96	
Other Frozen Fruit	733,268	239,889	388,822	53	162	
Total	1,626,391	1,101,879	1,196,452	74	109	977,423
Frozen Juice						
Orange Juice Conc. ¹	1,169,353	1,537,665	1,405,581	120	91	
(Gallon Equivalent)	118,164	155,382	142,035			
Other Juice Concentrate	316,382	290,904	319,280	101	110	
Total	1,485,735	1,828,569	1,724,861	116	94	242,905

See footnote(s) at end of table.

--continued

**Stocks in Cold Storage: By Commodity,
United States, October 2001**

Commodity	Stocks in All Warehouses			Percent of		Public Warehouse Stocks
	Oct 31, 2000	Sep 30, 2001	Oct 31, 2001	Oct 2000	Sep 2001	Oct 31, 2001
	<i>1,000 Pounds</i>	<i>1,000 Pounds</i>	<i>1,000 Pounds</i>	<i>Percent</i>	<i>Percent</i>	<i>1,000 Lbs</i>
Frozen Vegetables						
Asparagus	13,387	12,726	13,058	98	103	
Limas, Fordhook	17,932	16,334	16,422	92	101	
Limas, Baby	39,507	41,627	58,901	149	141	
Green Beans, Reg. Cut	183,057	191,423	185,812	102	97	
Green Beans, Fr. Style	40,058	29,968	28,030	70	94	
Broccoli, Spears	35,435	26,303	25,453	72	97	
Broccoli, Chopped & Cut	84,900	78,521	77,367	91	99	
Brussels Sprouts	14,947	7,945	11,883	80	150	
Carrots, Diced	61,130	43,832	63,435	104	145	
Carrots, Other	180,474	117,395	168,443	93	143	
Cauliflower	46,652	25,404	34,968	75	138	
Corn, Cut	412,876	382,000	395,222	96	103	
Corn, Cob	297,296	288,534	295,131	99	102	
Mixed Vegetables	48,390	50,739	50,250	104	99	
Okra	59,455	53,168	51,912	87	98	
Onion Rings	15,148	8,082	7,335	48	91	
Onions, Other	37,408	26,133	26,546	71	102	
Blackeye Peas	4,765	5,491	5,049	106	92	
Green Peas	359,333	320,198	275,477	77	86	
Peas & Carrots Mixed	8,875	8,816	9,501	107	108	
Spinach	60,622	67,525	67,331	111	100	
Squash, Summer/Zucchini	47,795	43,068	46,227	97	107	
Southern Greens	34,315	26,733	28,649	83	107	
Other Vegetables	344,191	329,012	359,090	104	109	
Total	2,447,948	2,200,977	2,301,492	94	105	1,751,821
Potatoes						
French Fries	1,104,302	1,071,789	1,095,867	99	102	
Other Frozen	247,172	251,450	232,484	94	92	
Total	1,351,474	1,323,239	1,328,351	98	100	980,994

See footnote(s) at end of table.

--continued

**Stocks in Cold Storage: By Commodity,
United States, October 2001 (Continued)**

Commodity	Stocks in All Warehouses			Percent of		Public Warehouse Stocks
	Oct 31, 2000	Sep 30, 2001	Oct 31, 2001	Oct 2000	Sep 2001	Oct 31, 2001
	<i>1,000 Pounds</i>	<i>1,000 Pounds</i>	<i>1,000 Pounds</i>	<i>Percent</i>	<i>Percent</i>	<i>1,000 Lbs</i>
Meat						
Frozen Beef						
Boneless ²	342,603	330,519	350,085	102	106	
Beef Cuts ³	61,791	52,245	52,856	86	101	
Total	404,394	382,764	402,941	100	105	400,991
(Government Owned)	1,768	1,891	2,385	135	126	
Frozen Pork						
Picnics, Bone-in	9,273	12,028	15,270	165	127	
Hams, Total	133,721	97,403	101,475	76	104	98,220
Bone-in	69,756	60,007	60,385	87	101	59,815
Boneless ⁴	63,965	37,396	41,090	64	110	38,405
Bellies	20,589	8,960	28,233	137	315	
Loins, Total	20,824	23,373	26,290	126	112	24,049
Bone-in	7,934	9,909	10,539	133	106	
Boneless ⁵	12,890	13,464	15,751	122	117	
Ribs ⁶	38,269	34,411	51,065	133	148	
Butts	11,809	8,520	12,409	105	146	
Trimmings ⁷	49,895	37,158	38,479	77	104	
Other ⁸	80,314	63,945	67,638	84	106	
Variety Meats ⁹	50,365	63,591	66,780	133	105	
Unclassified ¹⁰	23,505	17,557	22,211	94	127	
Total	438,564	366,946	429,850	98	117	387,817
(Government Owned)	8,596	1,347	1,655	19	123	
Other						
Veal	4,699	4,545	5,344	114	118	
Lamb & Mutton	12,195	13,979	13,233	109	95	
Total	16,894	18,524	18,577	110	100	18,392
Canned						
Canned Hams	6,828	6,226	4,344	64	70	
Other Canned Meat	1,363	801	411	30	51	
Total	8,191	7,027	4,755	58	68	4,684
Total	868,043	775,261	856,123	99	110	811,884
Miscellaneous						
Cooler	1,012,063	1,031,964	1,045,662	103	101	593,490
Freezer	2,244,414	2,207,200	2,242,646	100	102	2,165,710
Total	3,256,477	3,239,164	3,288,308	101	102	2,759,200
Commodities						
Stored in Coolers	9,259,690	5,607,955	8,161,422	88	146	1,290,935
Stored in Freezers	11,331,678	10,655,991	10,828,670	96	102	7,991,812
Total	20,591,368	16,263,946	18,990,092	92	117	9,282,747

¹ Adjusted to 42.0 degrees Brix equivalent (9.896 pounds per gallon).

² Includes all boxed boneless beef, such as ground beef, roasts, steaks, loins, strips, rounds, trimmings, etc. Variety meats (edible offal), such as tongues, livers, hearts, kidneys, and other organs removed from slaughtered beef, are included as miscellaneous freezer stocks.

³ Includes all boxed primal beef cuts, bone-in.

⁴ Includes full ham, bone removed and individual muscles separated.

⁵ Includes pork tenderloins.

⁶ Includes spareribs and backribs.

⁷ Includes 42% regular trimmings, 72% special trimmings, boneless picnic meat, jowls, neckbone trimmings, blade, cheek, head, and shank meat, etc. Packaged bacon, sausage, and processed items, such as hot dogs and luncheon meats, are included in miscellaneous cooler or freezer stocks.

⁸ Includes ears, tails, feet, neckbones and snouts.

⁹ Includes tongues, kidneys, livers, stomachs, hearts, chitterlings, salivary glands, and other organs removed from slaughtered hogs.

¹⁰ Includes product unable to be classified elsewhere in this report.

**Stocks in Cold Storage: By Commodity, Region,
and United States, September 30, 2001**

Commodity	New England	Middle Atlantic	East North Central	West North Central	South Atlantic
	<i>1,000 Pounds</i>	<i>1,000 Pounds</i>	<i>1,000 Pounds</i>	<i>1,000 Pounds</i>	<i>1,000 Pounds</i>
Total Fresh Apples	16	325,824	31,998	8	
Nuts					
Shelled					
Peanuts		27	152	18	237,833
Pecans ¹		232			8,291
In-Shell					
Pecans ¹		47			3,432
Dairy Products					
Natural Cheese					
American, Total	22,809	58,452	204,137	97,098	4,832
Other Natural Cheese	430	34,196	98,948	60,327	130
Frozen Poultry					
Chicken					
Broilers, Fryers					
Roasters (Whole)	66	1,996	1,587	904	5,826
Hens, Mature Chickens		334	492	365	3,484
Other	2,223	19,709	13,374	21,166	167,602
Total Chicken	2,289	22,039	15,453	22,435	176,912
Turkeys					
Whole Turkeys	11,547	32,269	28,315	49,639	58,172
Other Turkey	834	10,681	16,591	51,820	69,428
Total Turkey	12,381	42,950	44,906	101,459	127,600
Ducks		329	9,152	163	118
Total Poultry	14,670	65,318	69,511	124,057	304,630
Frozen Fruit					
Apples	15	9,765	18,940	138	268
Blueberries	24,364	7,480	61,952	275	5,332
Cherries, Tart (RSP)	30	6,415	137,019	224	576
Cherries, Sweet		460	12,467	71	60
Peaches	30	2,545	6,077	1,182	714
Raspberries, Red	5	1,605	1,080	73	158
Strawberries, Total	102	3,056	5,010	583	1,001
Other Frozen Fruit	29,768	11,170	111,545	163	5,033

See footnote(s) at end of table.

--continued

**Stocks in Cold Storage: By Commodity, Region,
and United States, September 30, 2001 (continued)**

Commodity	East South Central	West South Central	Mountain	Pacific	US Total
	<i>1,000 Pounds</i>	<i>1,000 Pounds</i>	<i>1,000 Pounds</i>	<i>1,000 Pounds</i>	<i>1,000 Pounds</i>
Total Fresh Apples		726	12	2,447,803	2,806,387
Nuts					
Shelled					
Peanuts	38,660	61,135	101	569	338,495
Pecans ¹	622	32,622		254	42,021
In-Shell					
Pecans ¹	259	12,077			15,815
Dairy Products					
Natural Cheese					
American, Total		2,582	11,484	86,165	487,559
Other Natural Cheese	164	96	5,694	10,747	210,732
Frozen Poultry					
Chicken					
Broilers, Fryers					
Roasters (Whole)	2,376	6,898	326	2,329	22,308
Hens, Mature Chickens	1,676	314	35	1,481	8,181
Other	99,422	236,121	1,687	33,073	594,377
Total Chicken	103,474	243,333	2,048	36,883	624,866
Turkeys					
Whole Turkeys	10,786	62,941	15,586	77,712	346,967
Other Turkey	577	16,834	7,572	20,671	195,008
Total Turkey	11,363	79,775	23,158	98,383	541,975
Ducks	84	57	42	188	10,133
Total Poultry	114,921	323,165	25,248	135,454	1,176,974
Frozen Fruit					
Apples	128	562	30	6,356	36,202
Blueberries	140	820	211	34,240	134,814
Cherries, Tart (RTP)	6	55	2,334	8,374	155,033
Cherries, Sweet	3	230	588	4,185	18,064
Peaches	60	1,067	31	71,963	83,669
Raspberries, Red	82	132	7	56,594	59,736
Strawberries, Total	1,233	22,952	336	278,408	312,681
Other Frozen Fruit	288	5,805	5,234	70,883	239,889

See footnote(s) at end of table.

--continued

**Stocks in Cold Storage: By Commodity, Region,
and United States, September 30, 2001 (continued)**

Commodity	New England	Middle Atlantic	East North Central	West North Central	South Atlantic
	<i>1,000 Pounds</i>	<i>1,000 Pounds</i>	<i>1,000 Pounds</i>	<i>1,000 Pounds</i>	<i>1,000 Pounds</i>
Frozen Juice					
Orange Juice Conc. ²	58		644	88	1,469,162
Other Juice Concentrate	168	12,245	9,618	1,466	120,543
Frozen Vegetables ³					
Asparagus		520	6,139	66	280
Limas, Fordhook		986	1,006	115	1,435
Limas, Baby		5,508	5,812	1,645	3,440
Green Beans, Reg. Cut		32,186	48,305	3,327	8,069
Green Beans, Fr. Style		8,365	6,319	953	654
Broccoli, Spears		4,986	2,805	117	1,312
Broccoli, Chopped & Cut		5,125	8,863	13,060	6,987
Brussels Sprouts		1,533	1,212	154	425
Carrots, Diced		7,259	12,272	932	3,325
Carrots, Other		8,875	15,165	853	5,241
Cauliflower		1,720	1,913	438	1,035
Corn, Cut		45,434	68,427	23,193	7,071
Corn, Cob		32,165	48,425	34,936	4,380
Mixed Vegetables		7,088	11,372	711	2,598
Okra		2,569	856	11,646	12,599
Onion Rings		768	2,899	1,569	772
Onions, Other		3,456	6,391	227	3,257
Blackeye Peas		241	72	26	3,090
Green Peas		51,939	45,903	10,949	8,111
Peas & Carrots Mixed		1,293	1,707	53	1,000
Spinach		14,260	4,030	1,586	5,199
Squash, Summer/Zucchini		2,412	11,914	785	4,304
Southern Greens		2,908	933	760	7,598
Other Vegetables		58,383	38,240	16,584	29,488
Potatoes					
French Fries	34,393	30,293	50,172	101,697	25,729
Other Frozen	5,677	16,257	40,483	9,845	2,635
Meat					
Frozen Beef					
Boneless ⁴	8,528	28,435	31,705	105,473	24,206
Beef Cuts ⁵	3,920	1,480	10,527	7,490	3,415
Frozen Pork					
Ribs ⁶	192	908	10,022	17,141	3,274
Trimmings ⁷	135	1,469	9,174	14,483	6,913
Other ⁸	1,956	1,757	11,274	29,916	8,707
Other					
Veal	107	796	1,187	229	43
Lamb & Mutton	319	3,534	520	4,363	505

See footnote(s) at end of table.

--continued

**Stocks in Cold Storage: By Commodity, Region,
and United States, September 30, 2001 (continued)**

Commodity	East South Central	West South Central	Mountain	Pacific	US Total
	<i>1,000 Pounds</i>	<i>1,000 Pounds</i>	<i>1,000 Pounds</i>	<i>1,000 Pounds</i>	<i>1,000 Pounds</i>
Frozen Juice					
Orange Juice Concentrate	49	8,693	1,548	57,423	1,537,665
Other Juice Concentrate	307	23,256	1,265	122,036	290,904
Frozen Vegetables ³					
Asparagus		412	64	5,245	12,726
Limas, Fordhook		615	1	12,176	16,334
Limas, Baby		685	4,648	19,889	41,627
Green Beans, Reg. Cut		3,084	113	96,339	191,423
Green Beans, Fr. Style		646	41	12,990	29,968
Broccoli, Spears		5,396	14	11,673	26,303
Broccoli, Chopped & Cut		10,836	916	32,734	78,521
Brussels Sprouts		353	6	4,262	7,945
Carrots, Diced		1,077	39	18,928	43,832
Carrots, Other		10,301	431	76,529	117,395
Cauliflower		3,596	99	16,603	25,404
Corn, Cut		2,957	2,144	232,774	382,000
Corn, Cob		1,986	9,526	157,116	288,534
Mixed Vegetables		3,682	188	25,100	50,739
Okra		24,413	1	1,084	53,168
Onion Rings		798	480	796	8,082
Onions, Other		1,729	1,416	9,657	26,133
Blackeye Peas		1,838		224	5,491
Green Peas		1,903	22,329	179,064	320,198
Peas & Carrots Mixed		246	53	4,464	8,816
Spinach		10,105	478	31,867	67,525
Squash, Summer/Zucchini		5,274	522	17,857	43,068
Southern Greens		13,165		1,369	26,733
Other Vegetables		37,583	5,626	143,108	329,012
Potatoes					
French Fries	4,382	11,931	274,293	538,899	1,071,789
Other Frozen	26	3,401	55,865	117,261	251,450
Meat					
Frozen Beef					
Boneless ⁴	7,954	60,537	2,461	61,220	330,519
Beef Cuts ⁵	3,099	9,297	6,287	6,730	52,245
Frozen Pork					
Ribs ⁶	1,162	705	78	929	34,411
Trimnings ⁷	123	4,459	15	387	37,158
Other ⁸	3,322	2,798	421	3,794	63,945
Other					
Veal	2	72		2,109	4,545
Lamb & Mutton		154	1,090	3,494	13,979

¹ East North Central combined with South Atlantic. Mountain and West North Central combined with West South Central.

² Middle Atlantic combined with South Atlantic.

³ New England combined with Middle Atlantic. East South Central combined with South Atlantic.

⁴ Includes all boxed boneless beef, such as ground beef, roasts, steaks, loins, strips, rounds, trimmings, etc. Variety meats (edible offal), such as tongues, livers, hearts, kidneys, and other organs removed from slaughtered beef, are included as miscellaneous freezer stocks.

⁵ Includes all boxed primal beef cuts, bone-in.

⁶ Includes spareribs and backribs.

⁷ Includes 42% regular trimmings, 72% special trimmings, boneless picnic meat, jowls, neckbone trimmings, blade, cheek, head, and shank meat, etc. Packaged bacon, sausage, and processed items, such as hot dogs and luncheon meats, are included in miscellaneous cooler or freezer stocks.

⁸ Includes ears, tails, feet, neckbones and snouts.

⁹ Includes tongues, kidneys, livers, stomachs, hearts, chitterlings, salivary glands, and other organs removed from slaughtered hogs.

¹⁰ Includes product unable to be classified elsewhere in this report.

**Stocks in Cold Storage: By Commodity, Region,
and United States, October 31, 2001**

Commodity	New England	Middle Atlantic	East North Central	West North Central	South Atlantic
	<i>1,000 Pounds</i>	<i>1,000 Pounds</i>	<i>1,000 Pounds</i>	<i>1,000 Pounds</i>	<i>1,000 Pounds</i>
Total Fresh Apples	57,616	653,069	530,704	7,452	347,537
Nuts					
Shelled					
Peanuts	5	80	31	20	259,094
Pecans ¹		111			7,039
In-Shell					
Pecans ¹		86			8,595
Dairy Products					
Natural Cheese					
American, Total	21,072	58,421	190,635	85,276	4,565
Other Natural Cheese	394	36,386	92,003	55,406	374
Frozen Poultry					
Chicken					
Broilers, Fryers					
Roasters (Whole)	67	1,894	1,514	838	6,424
Hens, Mature Chickens		283	346	193	2,755
Other	2,488	18,992	13,097	19,868	159,245
Total Chicken	2,555	21,169	14,957	20,899	168,424
Turkeys					
Whole Turkeys	8,974	35,954	24,905	42,353	49,488
Other Turkey	666	10,797	16,221	47,630	62,250
Total Turkey	9,640	46,751	41,126	89,983	111,738
Ducks		305	8,586	134	89
Total Poultry	12,195	68,225	64,669	111,016	280,251
Frozen Fruit					
Apples	33	10,640	19,518	172	292
Blueberries	21,865	6,594	55,511	191	4,326
Cherries, Tart (RTP)	29	8,705	124,838	231	530
Cherries, Sweet		370	11,379	37	69
Peaches	28	2,571	5,250	670	776
Raspberries, Red	4	1,454	1,106	100	91
Strawberries, Total	131	3,289	4,578	542	2,147
Other Frozen Fruit	32,086	14,815	212,355	55	5,705

See footnote(s) at end of table.

--continued

**Stocks in Cold Storage: By Commodity, Region,
and United States, October 31, 2001 (continued)**

Commodity	East South Central	West South Central	Mountain	Pacific	US Total
	<i>1,000 Pounds</i>	<i>1,000 Pounds</i>	<i>1,000 Pounds</i>	<i>1,000 Pounds</i>	<i>1,000 Pounds</i>
Total Fresh Apples	152	4,124	64,879	3,699,852	5,365,385
Nuts					
Shelled					
Peanuts	54,377	72,489	109	175	386,380
Pecans ¹	375	26,632		142	34,299
In-Shell					
Pecans ¹	251	9,280			18,212
Dairy Products					
Natural Cheese					
American, Total	272	2,573	11,182	84,544	458,540
Other Natural Cheese	151	238	5,122	9,249	199,323
Frozen Poultry					
Chicken					
Broilers, Fryers					
Roasters (Whole)	1,738	7,276	302	1,488	21,541
Hens, Mature Chickens	1,202	316	31	846	5,972
Other	116,995	244,479	1,563	31,942	608,669
Total Chicken	119,935	252,071	1,896	34,276	636,182
Turkeys					
Whole Turkeys	9,896	52,528	14,487	65,963	304,548
Other Turkey	1,228	23,360	8,205	18,625	188,982
Total Turkey	11,124	75,888	22,692	84,588	493,530
Ducks	41	65		76	9,296
Total Poultry	131,100	328,024	24,588	118,940	1,139,008
Frozen Fruit					
Apples	121	555	49	6,941	38,321
Blueberries	127	816	194	31,329	120,953
Cherries, Tart (RTP)	4	35	2,170	7,472	144,014
Cherries, Sweet	3	263	617	3,621	16,359
Peaches	65	1,625	29	66,487	77,501
Raspberries, Red	85	436	12	51,143	54,431
Strawberries, Total	1,140	21,469	244	266,210	299,750
Other Frozen Fruit	397	7,961	5,321	110,127	388,822

See footnote(s) at end of table.

--continued

**Stocks in Cold Storage: By Commodity, Region,
and United States, October 31, 2001 (continued)**

Commodity	New England	Middle Atlantic	East North Central	West North Central	South Atlantic
	<i>1,000 Pounds</i>	<i>1,000 Pounds</i>	<i>1,000 Pounds</i>	<i>1,000 Pounds</i>	<i>1,000 Pounds</i>
Frozen Juice					
Orange Juice Conc. ²	49		535	76	1,342,014
Other Juice Concentrate	423	13,197	16,040	1,096	131,572
Frozen Vegetables ³					
Asparagus		588	5,484	75	273
Limas, Fordhook		1,034	1,047	90	1,227
Limas, Baby		6,911	6,787	2,041	18,397
Green Beans, Reg. Cut		31,503	42,621	2,450	8,252
Green Beans, Fr. Style		8,464	5,709	881	611
Broccoli, Spears		4,722	2,524	97	1,674
Broccoli, Chopped & Cut		5,449	9,244	12,747	7,201
Brussels Sprouts		1,443	1,460	76	522
Carrots, Diced		9,937	16,809	692	4,195
Carrots, Other		13,968	29,297	983	6,291
Cauliflower		1,661	2,748	334	1,266
Corn, Cut		52,008	61,617	25,448	7,339
Corn, Cob		35,266	48,336	31,900	4,537
Mixed Vegetables		7,185	11,118	869	2,635
Okra		2,203	782	10,657	12,041
Onion Rings		433	2,833	1,402	734
Onions, Other		2,979	5,460	261	2,550
Blackeye Peas		242	108	42	2,484
Green Peas		46,811	39,520	9,469	7,268
Peas & Carrots Mixed		1,422	1,875	65	954
Spinach		14,590	4,267	1,546	5,896
Squash, Summer/Zucchini		4,430	12,325	878	4,344
Southern Greens		3,074	743	838	7,714
Other Vegetables		56,349	42,063	20,179	30,156
Potatoes					
French Fries	32,076	35,299	60,986	122,835	28,279
Other Frozen	5,574	13,309	39,832	9,592	2,399
Meat					
Frozen Beef					
Boneless ⁴	10,316	29,085	36,589	114,232	24,445
Beef Cuts ⁵	4,000	772	10,904	6,292	3,759
Frozen Pork					
Ribs ⁶	250	1,057	14,140	25,691	4,932
Trimmings ⁷	132	1,505	8,771	16,630	6,995
Other ⁸	2,054	1,918	10,444	33,597	9,412
Other					
Veal	118	796	1,236	226	43
Lamb & Mutton	303	3,438	488	4,497	459

See footnote(s) at end of table.

--continued

**Stocks in Cold Storage: By Commodity, Region,
and United States, October 31, 2001 (continued)**

Commodity	East South Central	West South Central	Mountain	Pacific	US Total
	<i>1,000 Pounds</i>	<i>1,000 Pounds</i>	<i>1,000 Pounds</i>	<i>1,000 Pounds</i>	<i>1,000 Pounds</i>
Frozen Juice					
Orange Juice Concentrate	30	7,811	1,405	53,661	1,405,581
Other Juice Concentrate	211	24,738	1,611	130,392	319,280
Frozen Vegetables ³					
Asparagus		390	81	6,167	13,058
Limas, Fordhook		680		12,344	16,422
Limas, Baby		1,371	4,128	19,266	58,901
Green Beans, Reg. Cut		4,212	75	96,699	185,812
Green Beans, Fr. Style		599	49	11,717	28,030
Broccoli, Spears		5,447	13	10,976	25,453
Broccoli, Chopped & Cut		10,774	607	31,345	77,367
Brussels Sprouts		517	5	7,860	11,883
Carrots, Diced		1,083	29	30,690	63,435
Carrots, Other		10,538	344	107,022	168,443
Cauliflower		4,625	94	24,240	34,968
Corn, Cut		2,827	2,088	243,895	395,222
Corn, Cob		2,298	9,367	163,427	295,131
Mixed Vegetables		3,808	182	24,453	50,250
Okra		25,311		918	51,912
Onion Rings		808	488	637	7,335
Onions, Other		1,890	1,504	11,902	26,546
Blackeye Peas		1,936		237	5,049
Green Peas		1,936	21,148	149,325	275,477
Peas & Carrots Mixed		486	35	4,664	9,501
Spinach		10,782	429	29,821	67,331
Squash, Summer/Zucchini		5,109	575	18,566	46,227
Southern Greens		14,682		1,598	28,649
Other Vegetables		40,917	5,889	163,537	359,090
Potatoes					
French Fries	1,272	23,341	267,619	524,160	1,095,867
Other Frozen	269	4,059	52,581	104,869	232,484
Meat					
Frozen Beef					
Boneless ⁴	7,140	67,060	2,525	58,693	350,085
Beef Cuts ⁵	3,446	11,479	6,135	6,069	52,856
Frozen Pork					
Ribs ⁶	1,710	1,647	125	1,513	51,065
Trimnings ⁷	129	3,909	17	391	38,479
Other ⁸	3,536	2,564	254	3,859	67,638
Other					
Veal	2	112		2,811	5,344
Lamb & Mutton		191	790	3,067	13,233

¹ East North Central combined with South Atlantic. Mountain and West North Central Combined with West South Central.

² Middle Atlantic combined with South Atlantic.

³ New England combined with Middle Atlantic. East South Central combined with South Atlantic.

⁴ Includes all boxed boneless beef, such as ground beef, roasts, steaks, loins, strips, rounds, trimmings, etc. Variety meats (edible offal), such as tongues, livers, hearts, kidneys, and other organs removed from slaughtered beef, are included as miscellaneous freezer stocks.

⁵ Includes all boxed primal beef cuts, bone-in.

⁶ Includes spareribs and backribs.

⁷ Includes 42% regular trimmings, 72% special trimmings, boneless picnic meat, jowls, neckbone trimmings, blade, cheek, head, and shank meat, etc. Packaged bacon, sausage, and processed items, such as hot dogs and luncheon meats, are included in miscellaneous cooler or freezer stocks.

⁸ Includes ears, tails, feet, neckbones and snouts.

⁹ Includes tongues, kidneys, livers, stomachs, hearts, chitterlings, salivary glands, and other organs removed from slaughtered hogs.

¹⁰ Includes product unable to be classified elsewhere in this report.

**Public General Warehouses: Cold Storage Space Occupied
by Region and United States, October 2001**

Region	Cooler				Freezer			
	Usable Space	Usable Space Occupied			Usable Space	Usable Space Occupied		
		Oct 31 2001	Oct 31 2000	Sep 30 2001		Oct 31 2001	Oct 31 2000	Sep 30 2001
	<i>1,000 Cu Ft</i>	<i>Percent</i>	<i>Percent</i>	<i>Percent</i>	<i>1,000 Cu Ft</i>	<i>Percent</i>	<i>Percent</i>	<i>Percent</i>
New England	2,209	56	74	75	19,713	75	58	53
Middle Atlantic	42,202	38	70	73	109,723	72	75	71
E. North Central	63,742	41	40	38	208,657	56	46	48
W. North Central	45,448	31	37	38	152,292	57	53	53
South Atlantic	52,019	33	37	40	188,472	59	56	55
E. South Central	9,483	44	45	50	71,713	42	37	39
W. South Central	22,194	25	23	25	134,592	59	57	59
Mountain	5,856	40	24	23	52,343	67	51	50
Pacific	43,885	37	43	40	287,456	77	66	68
US	287,038	36	42	43	1,224,961	63	57	57

Cold Storage Regions



**Apples in Cold Storage: By State
and United States, October 2001**

State	All Warehouses	
	Oct 31, 2000	Oct 31, 2001
	<i>1,000 Pounds</i>	<i>1,000 Pounds</i>
CA	160,309	136,109
MI	416,923	484,244
N ENG	68,076	57,616
NY	321,342	309,834
OH	20,835	25,165
OR	84,742	63,743
PA	254,385	342,831
VA	242,093	181,942
WA	4,450,003	3,500,000
WV	69,823	98,618
Other States	259,322	165,283
US	6,347,853	5,365,385

Survey Procedures: Questionnaires are mailed about the 24th of each month to all operators on the list of approximately 1,400 public and private cold storage warehouses. In addition, apple data are obtained from special surveys and other sources (State Departments of Agriculture, U.S. Apple Association, etc.). All survey data represent stocks as of the end of the month.

Data are collected from warehouses artificially cooled to a temperature of 50 degrees Fahrenheit or lower, and whose food products are normally stored for 30 days or more. All food items in these facilities are reported regardless of the number of days stored at the time of the report. Also included are specialized storage facilities meeting the 30 day requirement, such as fruit houses, dairy manufacturing plants, frozen fruit, fruit juice, and vegetable processors, and poultry and meat packing plants. Excluded are stocks in space maintained by wholesalers, jobbers, distributors, chain stores, locker plants containing individual lockers, meat packer branch houses, and frozen food processors whose entire inventories are turned over more than once a month.

Estimating Procedures: Data for reporting firms are added to estimates for non-reporting firms to obtain regional and National totals. Estimates for non-reporting firms are obtained by multiplying the previous month's figure by a percent change from the previous month. The percent change is calculated for each item from totals of the current and previous month summed from firms that reported both months.

Revision Policy: Data are revised the following month based on late reports or corrected data. Final figures are published in the annual summary in February of the following year.

Reliability: Reports are received from 900 firms each month which represent about 70 percent of the total capacity. Firms that are not on the list or firms who have never reported are not represented in the data. Monthly data can vary due to different firms reporting month to month. Survey data are also subject to non-sampling errors such as omissions and mistakes in reporting and in processing the data. While these errors cannot be measured directly, they are minimized by carefully reviewing all reported data for consistency and reasonableness.

The next "Cold Storage" report will be released at 3 p.m. ET on December 20, 2001.

The United States Department of Agriculture (USDA) prohibits discrimination in all its programs on the basis of race, color, national origin, gender, religion, age, disability, political beliefs, sexual orientation, and marital or family status. (Not all prohibited bases apply to all programs.) Persons with disabilities who require alternative means for communication of program information (braille, large print, audiotape, etc.) should contact the USDA's TARGET Center at 202-720-2600 (voice and TDD).

To file a complaint of discrimination, write USDA, Director, Office of Civil Rights, Room 326-W, Whitten Building, 1400 Independence Avenue, SW, Washington, D.C., 20250-9410, or call 202-720-5964 (voice or TDD). USDA is an equal opportunity provider and employer.

ACCESS TO REPORTS!!

For your convenience, there are several ways to obtain NASS reports, data products, and services:

INTERNET ACCESS

All NASS reports are available free of charge on the worldwide Internet. For access, connect to the Internet and go to the NASS Home Page at: <http://www.usda.gov/nass/>. Select "Today's Reports" or Publications and then Reports by Calendar or Publications and then Search, by Title or Subject.

E-MAIL SUBSCRIPTION

There are two options for subscribing via e-mail. All NASS reports are available by subscription free of charge direct to your e-mail address. 1) Starting with the NASS Home Page at <http://www.usda.gov/nass/>, click on **Publications**, then click on the **Subscribe by E-mail** button which takes you to the page describing e-mail delivery of reports. Finally, click on **Go to the Subscription Page** and follow the instructions. 2) If you do NOT have Internet access, send an e-mail message to: usda-reports@usda.mannlib.cornell.edu. In the body of the message type the word: **list**.

AUTOFAX ACCESS

NASSFax service is available for some reports from your fax machine. Please call 202-720-2000, using the handset attached to your fax. Respond to the voice prompts. Document 0411 is a list of available reports.

PRINTED REPORTS OR DATA PRODUCTS

CALL OUR TOLL-FREE ORDER DESK: 800-999-6779 (U.S. and Canada)
Other areas, please call 703-605-6220 FAX: 703-605-6900
(Visa, MasterCard, check, or money order acceptable for payment.)

ASSISTANCE

For **assistance** with general agricultural statistics or further information about NASS or its products or services, contact the **Agricultural Statistics Hotline** at **800-727-9540**, 7:30 a.m. to 4:00 p.m. ET, or e-mail: nass@nass.usda.gov.