



Cold Storage

Released December 20, 2001, by the National Agricultural Statistics Service (NASS), Agricultural Statistics Board, U.S. Department of Agriculture. For information on "Cold Storage" call Linda Simpson at (202) 720-8784, office hours 7:00 a.m. to 4:30 p.m. ET.

HIGHLIGHTS

Frozen food stocks in refrigerated warehouses on November 30, 2001, were greater than year earlier levels for orange juice.

Butter stocks were 44 percent below October 2001 but were 97 percent above a year ago.

Total red meat supplies in freezers were 4 percent above October 2001 but were slightly below November 2000. Frozen pork stocks were 1 percent above last month but were 3 percent below last year. Stocks of pork bellies were 29 percent above last month but were 6 percent below November 2000 stocks.

Total frozen poultry supplies on November 30, 2001, were down 17 percent from last month and were 8 percent below last year's level. Total stocks of chicken were 8 percent above last month but were 10 percent below last year. Total pounds of turkey in freezers decreased 49 percent from last month and were 2 percent below last year.

Public cooler occupancy on November 30, 2001, was at 41 percent of capacity, up 6 points from last year. Public freezer occupancy, at 56 percent, was down 2 percentage points from last year.

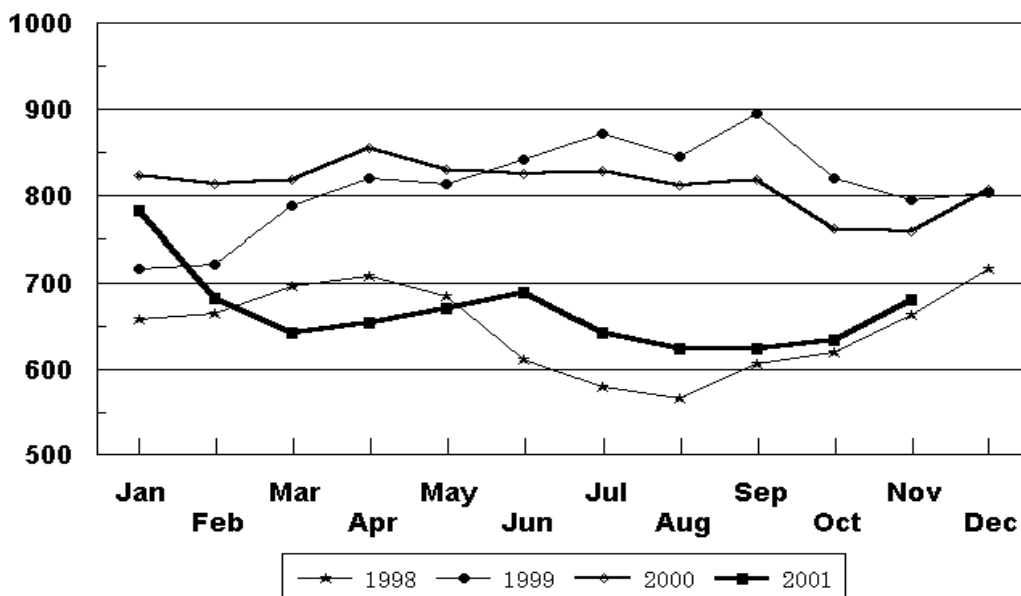
This page is intentionally blank.

Table of Contents

	Page
Stocks in Cold Storage: By Commodity, United States, November 2001	4
Stocks in Cold Storage: By Commodity, Region, and United States, October 31, 2001	8
Stocks in Cold Storage: By Commodity, Region, and United States, November 30, 2001	12
Public General Warehouses: Cold Storage Space Occupied by Region and United States, November 2001	16
Apples in Cold Storage: By State and United States, November 30, 2000 and 2001	17
Survey and Estimating Procedures, Revision Policy and Reliability	18

**Total Frozen Chickens
Cold Storage Stocks, 1998-2001
United States**

Million Pounds



**Stocks in Cold Storage: By Commodity,
United States, November 2001**

Commodity	Stocks in All Warehouses			Percent of		Public Warehouse Stocks
	Nov 30, 2000	Oct 31, 2001	Nov 30, 2001	Nov 2000	Oct 2001	Nov 30, 2001
	<i>1,000 Pounds</i>	<i>1,000 Pounds</i>	<i>1,000 Pounds</i>	<i>Percent</i>	<i>Percent</i>	<i>1,000 Lbs</i>
Fresh Fruit						
Apples						
Regular Storage	1,402,219	1,781,866	1,124,201	80	63	
Controlled Atmosphere	4,230,687	3,782,496	3,835,029	91	101	
Total	5,632,906	5,564,362	4,959,230	88	89	16,578
Pears						
Bartlett	25,640	73,688	26,765	104	36	
Other Varieties	400,335	443,436	383,482	96	86	
Total	425,975	517,124	410,247	96	79	3,859
Nuts						
Shelled						
Peanuts	345,129	386,056	420,727	122	109	
Pecans	27,838	34,294	28,406	102	83	
Other Shelled	157,118	86,095	108,972	69	127	
Total	530,085	506,445	558,105	105	110	279,697
In-Shell						
Peanuts	17,564	9,604	24,347	139	254	
Pecans	118,126	18,212	32,886	28	181	
Other In-Shell	23,377	19,601	18,136	78	93	
Total	159,067	47,417	75,369	47	159	24,091
Dairy Products						
Butter, Total	27,280	95,791	53,634	197	56	46,790
(Government Owned)	188	344	341	181	99	
Natural Cheese						
American, Total	522,534	463,378	439,228	84	95	
(Government Owned)	706	911	207	29	23	
Swiss	14,080	10,671	10,615	75	99	
Other Natural Cheese	159,365	198,185	189,493	119	96	
Total	695,979	672,234	639,336	92	95	372,133
Eggs, Frozen						
Whites	3,647	3,024	1,811	50	60	
Yolks	730	744	580	79	78	
Whole & Mixed	10,046	4,298	4,337	43	101	
Unclassified	992	728	609	61	84	
Total	15,415	8,794	7,337	48	83	6,910
Frozen Poultry						
Chicken						
Broilers, Fryers						
Roasters (Whole)	31,734	21,553	22,332	70	104	
Hens, Mature Chickens	7,984	5,972	5,205	65	87	
Other	718,343	606,308	653,874	90	108	
Total Chicken	758,061	633,833	681,411	90	108	

See footnote(s) at end of table.

--continued

**Stocks in Cold Storage: By Commodity,
United States, November 2001**

Commodity	Stocks in All Warehouses			Percent of		Public Warehouse Stocks
	Nov 30, 2000	Oct 31, 2001	Nov 30, 2001	Nov 2000	Oct 2001	Nov 30, 2001
	<i>1,000 Pounds</i>	<i>1,000 Pounds</i>	<i>1,000 Pounds</i>	<i>Percent</i>	<i>Percent</i>	<i>1,000 Lbs</i>
Turkeys						
Whole Turkeys	109,953	296,425	93,449	85	32	
Other Turkey	151,165	201,200	162,183	107	81	
Total Turkey	261,118	497,625	255,632	98	51	
Ducks	4,326	9,192	8,300	192	90	
Total Poultry	1,023,505	1,140,650	945,343	92	83	837,963
Frozen Fruit						
Apples	57,527	38,421	41,362	72	108	
Apricots	10,366	9,661	8,599	83	89	
Blackberries, Total	25,720	31,113	27,030	105	87	
IQF	16,987	17,654	15,164	89	86	
Pails and Tubs	2,068	4,289	3,735	181	87	
Barrels, 400 lbs net	4,306	7,714	6,942	161	90	
Concentrate	2,359	1,456	1,189	50	82	
Blueberries	93,553	120,955	112,382	120	93	
Boysenberries	4,820	3,566	3,409	71	96	
Cherries, Tart (RTP)	122,339	144,013	129,082	106	90	
Cherries, Tart (Juice)	2,013	2,711	3,356	167	124	
Cherries, Sweet	12,920	16,332	13,950	108	85	
Grapes	5,880	5,916	5,463	93	92	
Peaches	84,422	77,452	70,664	84	91	
Raspberries, Black	1,746	3,347	3,015	173	90	
Raspberries, Red, Total	58,089	54,457	50,558	87	93	
IQF	17,272	21,513	19,515	113	91	
Pails and Tubs	16,768	10,887	10,479	62	96	
Barrels, 400 lbs net	22,287	20,833	18,946	85	91	
Concentrate	1,762	1,224	1,618	92	132	
Strawberries, Total	350,259	299,598	266,206	76	89	
Other Frozen Fruit	772,391	392,232	408,101	53	104	
Total	1,602,045	1,199,774	1,143,177	71	95	926,215
Frozen Juice						
Orange Juice Conc. ¹	1,201,990	1,405,498	1,406,667	117	100	
(Gallon Equivalent)	121,462	142,027	142,145			
Other Juice Concentrate	293,688	319,272	317,750	108	100	
Total	1,495,678	1,724,770	1,724,417	115	100	284,212

See footnote(s) at end of table.

--continued

**Stocks in Cold Storage: By Commodity,
United States, November 2001**

Commodity	Stocks in All Warehouses			Percent of		Public Warehouse Stocks
	Nov 30, 2000	Oct 31, 2001	Nov 30, 2001	Nov 2000	Oct 2001	Nov 30, 2001
	<i>1,000 Pounds</i>	<i>1,000 Pounds</i>	<i>1,000 Pounds</i>	<i>Percent</i>	<i>Percent</i>	<i>1,000 Lbs</i>
Frozen Vegetables						
Asparagus	13,258	13,065	12,239	92	94	
Limas, Fordhook	16,107	16,393	15,334	95	94	
Limas, Baby	35,105	57,570	53,735	153	93	
Green Beans, Reg. Cut	163,266	188,387	163,281	100	87	
Green Beans, Fr. Style	35,129	27,755	23,883	68	86	
Broccoli, Spears	33,021	25,612	27,683	84	108	
Broccoli, Chopped & Cut	80,088	77,645	77,728	97	100	
Brussels Sprouts	18,289	11,997	15,775	86	131	
Carrots, Diced	104,883	64,065	89,976	86	140	
Carrots, Other	198,101	170,102	196,759	99	116	
Cauliflower	51,825	33,423	35,276	68	106	
Corn, Cut	366,783	409,944	380,896	104	93	
Corn, Cob	272,850	289,305	269,700	99	93	
Mixed Vegetables	46,315	50,852	48,439	105	95	
Okra	53,579	51,866	43,360	81	84	
Onion Rings	14,293	7,298	8,576	60	118	
Onions, Other	39,909	27,726	28,738	72	104	
Blackeye Peas	4,631	5,595	4,957	107	89	
Green Peas	324,630	276,547	241,349	74	87	
Peas & Carrots Mixed	7,453	9,502	8,322	112	88	
Spinach	56,713	67,221	66,326	117	99	
Squash, Summer/Zucchini	44,087	45,878	45,389	103	99	
Southern Greens	37,398	29,143	31,641	85	109	
Other Vegetables	382,872	362,264	359,745	94	99	
Total	2,400,585	2,319,155	2,249,107	94	97	1,717,116
Potatoes						
French Fries	1,048,737	1,105,469	1,068,221	102	97	
Other Frozen	237,160	233,072	230,688	97	99	
Total	1,285,897	1,338,541	1,298,909	101	97	950,324

See footnote(s) at end of table.

--continued

**Stocks in Cold Storage: By Commodity,
United States, November 2001 (Continued)**

Commodity	Stocks in All Warehouses			Percent of		Public Warehouse Stocks
	Nov 30, 2000	Oct 31, 2001	Nov 30, 2001	Nov 2000	Oct 2001	Nov 30, 2001
	<i>1,000 Pounds</i>	<i>1,000 Pounds</i>	<i>1,000 Pounds</i>	<i>Percent</i>	<i>Percent</i>	<i>1,000 Lbs</i>
Meat						
Frozen Beef						
Boneless ²	350,793	341,086	370,666	106	109	
Beef Cuts ³	61,051	52,492	56,335	92	107	
Total	411,844	393,578	427,001	104	108	424,941
(Government Owned)	2,988	2,425	2,497	84	103	
Frozen Pork						
Picnics, Bone-in	12,539	15,304	13,481	108	88	
Hams, Total	94,534	101,446	66,428	70	65	63,626
Bone-in	40,153	60,439	32,009	80	53	31,229
Boneless ⁴	54,381	41,007	34,419	63	84	32,397
Bellies	38,674	28,209	36,290	94	129	
Loins, Total	32,183	26,173	37,526	117	143	34,588
Bone-in	15,185	10,517	19,347	127	184	
Boneless ⁵	16,998	15,656	18,179	107	116	
Ribs ⁶	49,273	50,253	63,629	129	127	
Butts	10,608	12,409	16,018	151	129	
Trimmings ⁷	55,670	38,454	45,876	82	119	
Other ⁸	81,424	68,385	76,915	94	112	
Variety Meats ⁹	48,887	66,704	53,619	110	80	
Unclassified ¹⁰	21,815	22,977	23,049	106	100	
Total	445,607	430,314	432,831	97	101	388,935
(Government Owned)	8,352	1,631	1,557	19	95	
Other						
Veal	5,658	5,344	5,591	99	105	
Lamb & Mutton	12,486	13,198	10,885	87	82	
Total	18,144	18,542	16,476	91	89	16,323
Canned						
Canned Hams	6,514	4,343	3,517	54	81	
Other Canned Meat	863	411	80	9	19	
Total	7,377	4,754	3,597	49	76	3,484
Total	882,972	847,188	879,905	100	104	833,683
Miscellaneous						
Cooler	943,573	1,158,135	1,007,993	107	87	413,153
Freezer	2,218,229	2,261,079	2,205,314	99	98	2,120,212
Total	3,161,802	3,419,214	3,213,307	102	94	2,533,365
Commodities						
Stored in Coolers	8,394,962	8,478,292	7,661,697	91	90	1,270,155
Stored in Freezers	10,944,229	10,874,660	10,482,978	96	96	7,719,941
Total	19,339,191	19,352,952	18,144,675	94	94	8,990,096

¹ Adjusted to 42.0 degrees Brix equivalent (9.896 pounds per gallon).

² Includes all boxed boneless beef, such as ground beef, roasts, steaks, loins, strips, rounds, trimmings, etc. Variety meats (edible offal), such as tongues, livers, hearts, kidneys, and other organs removed from slaughtered beef, are included as miscellaneous freezer stocks.

³ Includes all boxed primal beef cuts, bone-in.

⁴ Includes full ham, bone removed and individual muscles separated.

⁵ Includes pork tenderloins.

⁶ Includes spareribs and backribs.

⁷ Includes 42% regular trimmings, 72% special trimmings, boneless picnic meat, jowls, neckbone trimmings, blade, cheek, head, and shank meat, etc. Packaged bacon, sausage, and processed items, such as hot dogs and luncheon meats, are included in miscellaneous cooler or freezer stocks.

⁸ Includes ears, tails, feet, neckbones and snouts.

⁹ Includes tongues, kidneys, livers, stomachs, hearts, chitterlings, salivary glands, and other organs removed from slaughtered hogs.

¹⁰ Includes product unable to be classified elsewhere in this report.

**Stocks in Cold Storage: By Commodity, Region,
and United States, October 31, 2001**

Commodity	New England	Middle Atlantic	East North Central	West North Central	South Atlantic
	<i>1,000 Pounds</i>	<i>1,000 Pounds</i>	<i>1,000 Pounds</i>	<i>1,000 Pounds</i>	<i>1,000 Pounds</i>
Total Fresh Apples	57,616	653,069	530,704	7,452	347,537
Nuts					
Shelled					
Peanuts	5	80	31	20	259,094
Pecans ¹		111			7,034
In-Shell					
Pecans ¹		86			8,595
Dairy Products					
Natural Cheese					
American, Total	21,072	58,417	194,784	88,490	4,565
Other Natural Cheese	394	34,981	93,738	55,373	374
Frozen Poultry					
Chicken					
Broilers, Fryers					
Roasters (Whole)	67	1,908	1,541	809	6,424
Hens, Mature Chickens		283	346	193	2,755
Other	2,488	18,617	13,151	19,101	157,825
Total Chicken	2,555	20,808	15,038	20,103	167,004
Turkeys					
Whole Turkeys	8,974	36,000	24,905	42,719	50,350
Other Turkey	666	11,024	17,807	47,316	73,031
Total Turkey	9,640	47,024	42,712	90,035	123,381
Ducks		305	8,532	84	89
Total Poultry	12,195	68,137	66,282	110,222	290,474
Frozen Fruit					
Apples	33	10,640	19,620	171	292
Blueberries	21,865	6,593	55,513	191	4,326
Cherries, Tart (RSP)	29	8,706	124,835	229	530
Cherries, Sweet		371	11,351	37	69
Peaches	28	2,571	5,278	670	776
Raspberries, Red	4	1,460	1,110	100	91
Strawberries, Total	131	3,270	4,666	551	2,147
Other Frozen Fruit	32,086	14,811	215,808	55	5,705

See footnote(s) at end of table.

--continued

**Stocks in Cold Storage: By Commodity, Region,
and United States, October 31, 2001 (continued)**

Commodity	East South Central	West South Central	Mountain	Pacific	US Total
	<i>1,000 Pounds</i>	<i>1,000 Pounds</i>	<i>1,000 Pounds</i>	<i>1,000 Pounds</i>	<i>1,000 Pounds</i>
Total Fresh Apples	152	4,126	64,879	3,898,827	5,564,362
Nuts					
Shelled					
Peanuts	54,053	72,489	109	175	386,056
Pecans ¹	375	26,632		142	34,294
In-Shell					
Pecans ¹	251	9,280			18,212
Dairy Products					
Natural Cheese					
American, Total	272	2,573	11,305	81,900	463,378
Other Natural Cheese	151	238	5,738	7,198	198,185
Frozen Poultry					
Chicken					
Broilers, Fryers					
Roasters (Whole)	1,738	7,276	302	1,488	21,553
Hens, Mature Chickens	1,202	316	31	846	5,972
Other	116,995	244,555	1,634	31,942	606,308
Total Chicken	119,935	252,147	1,967	34,276	633,833
Turkeys					
Whole Turkeys	9,240	43,779	14,495	65,963	296,425
Other Turkey	1,228	23,324	8,179	18,625	201,200
Total Turkey	10,468	67,103	22,674	84,588	497,625
Ducks	41	65		76	9,192
Total Poultry	130,444	319,315	24,641	118,940	1,140,650
Frozen Fruit					
Apples	121	554	49	6,941	38,421
Blueberries	127	816	194	31,330	120,955
Cherries, Tart (RTP)	4	35	2,173	7,472	144,013
Cherries, Sweet	3	263	617	3,621	16,332
Peaches	65	1,554	23	66,487	77,452
Raspberries, Red	85	436	12	51,159	54,457
Strawberries, Total	1,140	21,468	249	265,976	299,598
Other Frozen Fruit	397	7,961	5,321	110,088	392,232

See footnote(s) at end of table.

--continued

**Stocks in Cold Storage: By Commodity, Region,
and United States, October 31, 2001 (continued)**

Commodity	New England	Middle Atlantic	East North Central	West North Central	South Atlantic
	<i>1,000 Pounds</i>	<i>1,000 Pounds</i>	<i>1,000 Pounds</i>	<i>1,000 Pounds</i>	<i>1,000 Pounds</i>
Frozen Juice					
Orange Juice Conc. ²	49		511	67	1,341,963
Other Juice Concentrate	423	13,151	16,119	1,057	131,572
Frozen Vegetables ³					
Asparagus		588	5,492	73	273
Limas, Fordhook		1,002	1,050	90	1,227
Limas, Baby		6,932	6,788	681	18,397
Green Beans, Reg. Cut		31,358	44,404	3,174	8,252
Green Beans, Fr. Style		8,583	5,711	932	611
Broccoli, Spears		4,896	2,518	92	1,674
Broccoli, Chopped & Cut		5,730	9,247	12,736	7,201
Brussels Sprouts		1,556	1,461	76	522
Carrots, Diced		9,937	17,133	992	4,195
Carrots, Other		13,978	30,639	1,481	6,291
Cauliflower		1,735	2,724	329	1,266
Corn, Cut		52,006	76,233	26,759	7,339
Corn, Cob		35,271	44,282	32,900	4,537
Mixed Vegetables		7,177	11,182	867	2,635
Okra		2,201	777	10,618	12,041
Onion Rings		431	2,836	1,364	734
Onions, Other		2,981	5,432	259	2,550
Blackeye Peas		242	108	42	3,030
Green Peas		46,778	39,515	10,462	7,268
Peas & Carrots Mixed		1,430	1,869	64	954
Spinach		14,655	4,277	1,361	5,896
Squash, Summer/Zucchini		4,453	12,326	838	4,344
Southern Greens		3,049	745	1,355	7,714
Other Vegetables		56,759	41,997	21,208	30,156
Potatoes					
French Fries	32,076	35,390	60,933	132,398	28,279
Other Frozen	5,574	13,308	40,315	9,592	2,399
Meat					
Frozen Beef					
Boneless ⁴	10,316	29,084	36,582	104,612	24,445
Beef Cuts ⁵	4,000	772	10,904	5,927	3,759
Frozen Pork					
Ribs ⁶	250	1,057	14,122	24,777	5,108
Trimnings ⁷	132	1,505	8,771	16,605	6,995
Other ⁸	2,054	1,918	11,291	33,555	9,413
Other					
Veal	118	796	1,236	226	43
Lamb & Mutton	303	3,438	488	4,461	459

See footnote(s) at end of table.

--continued

**Stocks in Cold Storage: By Commodity, Region,
and United States, October 31, 2001 (continued)**

Commodity	East South Central	West South Central	Mountain	Pacific	US Total
	<i>1,000 Pounds</i>	<i>1,000 Pounds</i>	<i>1,000 Pounds</i>	<i>1,000 Pounds</i>	<i>1,000 Pounds</i>
Frozen Juice					
Orange Juice Concentrate	30	7,811	1,406	53,661	1,405,498
Other Juice Concentrate	211	24,738	1,609	130,392	319,272
Frozen Vegetables ³					
Asparagus		390	81	6,168	13,065
Limas, Fordhook		680		12,344	16,393
Limas, Baby		1,371	4,128	19,273	57,570
Green Beans, Reg. Cut		4,210	75	96,914	188,387
Green Beans, Fr. Style		599	49	11,270	27,755
Broccoli, Spears		5,447	13	10,972	25,612
Broccoli, Chopped & Cut		10,774	607	31,350	77,645
Brussels Sprouts		517	5	7,860	11,997
Carrots, Diced		1,083	29	30,696	64,065
Carrots, Other		10,538	328	106,847	170,102
Cauliflower		4,625	94	22,650	33,423
Corn, Cut		2,819	3,202	241,586	409,944
Corn, Cob		2,298	8,230	161,787	289,305
Mixed Vegetables		3,808	182	25,001	50,852
Okra		25,311		918	51,866
Onion Rings		808	488	637	7,298
Onions, Other		1,890	1,504	13,110	27,726
Blackeye Peas		1,936		237	5,595
Green Peas		1,935	21,174	149,415	276,547
Peas & Carrots Mixed		486	35	4,664	9,502
Spinach		10,782	429	29,821	67,221
Squash, Summer/Zucchini		5,109	575	18,233	45,878
Southern Greens		14,682		1,598	29,143
Other Vegetables		40,917	5,889	165,338	362,264
Potatoes					
French Fries	1,272	23,341	267,620	524,160	1,105,469
Other Frozen	269	4,023	52,723	104,869	233,072
Meat					
Frozen Beef					
Boneless ⁴	7,140	67,328	2,886	58,693	341,086
Beef Cuts ⁵	3,446	11,479	6,136	6,069	52,492
Frozen Pork					
Ribs ⁶	1,710	1,608	108	1,513	50,253
Trimming ⁷	129	3,909	17	391	38,454
Other ⁸	3,536	2,564	195	3,859	68,385
Other					
Veal	2	112		2,811	5,344
Lamb & Mutton		191	791	3,067	13,198

¹ East North Central combined with South Atlantic. Mountain and West North Central combined with West South Central.

² Middle Atlantic combined with South Atlantic.

³ New England combined with Middle Atlantic. East South Central combined with South Atlantic.

⁴ Includes all boxed boneless beef, such as ground beef, roasts, steaks, loins, strips, rounds, trimmings, etc. Variety meats (edible offal), such as tongues, livers, hearts, kidneys, and other organs removed from slaughtered beef, are included as miscellaneous freezer stocks.

⁵ Includes all boxed primal beef cuts, bone-in.

⁶ Includes spareribs and backribs.

⁷ Includes 42% regular trimmings, 72% special trimmings, boneless picnic meat, jowls, neckbone trimmings, blade, cheek, head, and shank meat, etc. Packaged bacon, sausage, and processed items, such as hot dogs and luncheon meats, are included in miscellaneous cooler or freezer stocks.

⁸ Includes ears, tails, feet, neckbones and snouts.

⁹ Includes tongues, kidneys, livers, stomachs, hearts, chitterlings, salivary glands, and other organs removed from slaughtered hogs.

¹⁰ Includes product unable to be classified elsewhere in this report.

**Stocks in Cold Storage: By Commodity, Region,
and United States, November 30, 2001**

Commodity	New England	Middle Atlantic	East North Central	West North Central	South Atlantic
	<i>1,000 Pounds</i>	<i>1,000 Pounds</i>	<i>1,000 Pounds</i>	<i>1,000 Pounds</i>	<i>1,000 Pounds</i>
Total Fresh Apples	45,625	598,245	420,969	3,852	300,240
Nuts					
Shelled					
Peanuts	71	22	111	21	277,881
Pecans ¹	5	186			6,101
In-Shell					
Pecans ¹		33			23,409
Dairy Products					
Natural Cheese					
American, Total	20,089	56,541	167,679	92,776	3,991
Other Natural Cheese	553	32,595	88,654	51,998	246
Frozen Poultry					
Chicken					
Broilers, Fryers					
Roasters (Whole)	68	1,922	1,524	840	5,780
Hens, Mature Chickens		234	280	178	2,418
Other	2,728	18,304	14,504	21,148	170,009
Total Chicken	2,796	20,460	16,308	22,166	178,207
Turkeys					
Whole Turkeys	1,562	5,984	5,653	15,054	21,409
Other Turkey	413	8,003	14,993	40,796	68,064
Total Turkey	1,975	13,987	20,646	55,850	89,473
Ducks		326	7,720	53	87
Total Poultry	4,771	34,773	44,674	78,069	267,767
Frozen Fruit					
Apples	20	11,944	21,113	124	308
Blueberries	21,520	6,753	51,153	214	3,771
Cherries, Tart (RTP)	26	7,837	111,581	224	471
Cherries, Sweet		299	9,879	28	66
Peaches	26	2,540	4,894	620	597
Raspberries, Red	4	1,358	952	51	78
Strawberries, Total	104	2,863	4,087	532	806
Other Frozen Fruit	33,872	15,528	204,950	1,162	5,423

See footnote(s) at end of table.

--continued

**Stocks in Cold Storage: By Commodity, Region,
and United States, November 30, 2001 (continued)**

Commodity	East South Central	West South Central	Mountain	Pacific	US Total
	<i>1,000 Pounds</i>	<i>1,000 Pounds</i>	<i>1,000 Pounds</i>	<i>1,000 Pounds</i>	<i>1,000 Pounds</i>
Total Fresh Apples	81	4,083	48,950	3,537,185	4,959,230
Nuts					
Shelled					
Peanuts	59,204	83,124	109	184	420,727
Pecans ¹	368	21,650		96	28,406
In-Shell					
Pecans ¹	3,065	6,379			32,886
Dairy Products					
Natural Cheese					
American, Total	278	2,363	11,888	83,623	439,228
Other Natural Cheese	144	219	5,685	9,399	189,493
Frozen Poultry					
Chicken					
Broilers, Fryers					
Roasters (Whole)	2,301	8,617	311	969	22,332
Hens, Mature Chickens	1,179	306	28	582	5,205
Other	123,479	265,919	1,602	36,181	653,874
Total Chicken	126,959	274,842	1,941	37,732	681,411
Turkeys					
Whole Turkeys	1,349	12,641	6,260	23,537	93,449
Other Turkey	367	16,565	5,435	7,547	162,183
Total Turkey	1,716	29,206	11,695	31,084	255,632
Ducks		29	12	73	8,300
Total Poultry	128,675	304,077	13,648	68,889	945,343
Frozen Fruit					
Apples	101	576	42	7,134	41,362
Blueberries	115	703	186	27,967	112,382
Cherries, Tart (RTP)	32	54	1,957	6,900	129,082
Cherries, Sweet	2	226	388	3,062	13,950
Peaches	55	1,374	50	60,508	70,664
Raspberries, Red	66	467	7	47,575	50,558
Strawberries, Total	1,151	19,675	253	236,735	266,206
Other Frozen Fruit	320	7,037	4,761	135,048	408,101

See footnote(s) at end of table.

--continued

**Stocks in Cold Storage: By Commodity, Region,
and United States, November 30, 2001 (continued)**

Commodity	New England	Middle Atlantic	East North Central	West North Central	South Atlantic
	<i>1,000 Pounds</i>	<i>1,000 Pounds</i>	<i>1,000 Pounds</i>	<i>1,000 Pounds</i>	<i>1,000 Pounds</i>
Frozen Juice					
Orange Juice Conc. ²	68		517	119	1,341,434
Other Juice Concentrate	321	13,635	24,570	617	124,009
Frozen Vegetables ³					
Asparagus		788	4,705	79	381
Limas, Fordhook		1,394	929	80	1,173
Limas, Baby		6,518	6,163	1,609	17,300
Green Beans, Reg. Cut		28,891	37,932	2,515	7,568
Green Beans, Fr. Style		7,027	5,140	824	390
Broccoli, Spears		4,614	2,498	155	1,929
Broccoli, Chopped & Cut		5,655	7,915	12,103	7,394
Brussels Sprouts		1,954	1,520	324	829
Carrots, Diced		12,891	19,631	1,030	5,532
Carrots, Other		20,542	33,739	1,246	6,671
Cauliflower		2,129	3,023	355	1,225
Corn, Cut		47,852	71,664	25,719	6,317
Corn, Cob		35,089	39,423	30,713	4,491
Mixed Vegetables		6,817	10,163	867	2,184
Okra		2,159	1,264	6,881	10,385
Onion Rings		457	2,592	1,506	2,094
Onions, Other		3,271	5,449	334	2,236
Blackeye Peas		197	113	43	2,826
Green Peas		41,533	32,688	9,267	6,523
Peas & Carrots Mixed		1,448	1,599	53	849
Spinach		17,235	4,262	660	6,275
Squash, Summer/Zucchini		4,642	11,879	716	3,754
Southern Greens		3,225	584	470	10,351
Other Vegetables		54,488	37,071	21,180	30,559
Potatoes					
French Fries	31,743	35,002	62,755	124,002	26,074
Other Frozen	5,180	17,703	43,593	8,512	2,458
Meat					
Frozen Beef					
Boneless ⁴	11,625	29,447	48,631	112,612	29,561
Beef Cuts ⁵	3,847	887	14,316	6,545	3,858
Frozen Pork					
Ribs ⁶	315	1,609	18,060	30,832	6,923
Trimmings ⁷	232	1,662	10,057	23,252	5,815
Other ⁸	2,158	1,298	15,107	38,684	9,158
Other					
Veal	130	959	1,199	219	46
Lamb & Mutton	288	3,307	447	3,835	443

See footnote(s) at end of table.

--continued

**Stocks in Cold Storage: By Commodity, Region,
and United States, November 30, 2001 (continued)**

Commodity	East South Central	West South Central	Mountain	Pacific	US Total
	<i>1,000 Pounds</i>	<i>1,000 Pounds</i>	<i>1,000 Pounds</i>	<i>1,000 Pounds</i>	<i>1,000 Pounds</i>
Frozen Juice					
Orange Juice Concentrate	31	7,510	1,473	55,515	1,406,667
Other Juice Concentrate	171	25,193	1,515	127,719	317,750
Frozen Vegetables ³					
Asparagus		455	190	5,641	12,239
Limas, Fordhook		588		11,170	15,334
Limas, Baby		1,358	3,784	17,003	53,735
Green Beans, Reg. Cut		3,925	65	82,385	163,281
Green Beans, Fr. Style		590	33	9,879	23,883
Broccoli, Spears		6,007	10	12,470	27,683
Broccoli, Chopped & Cut		11,463	576	32,622	77,728
Brussels Sprouts		426	1	10,721	15,775
Carrots, Diced		1,048	8	49,836	89,976
Carrots, Other		9,823	442	124,296	196,759
Cauliflower		5,327	96	23,121	35,276
Corn, Cut		2,809	3,039	223,496	380,896
Corn, Cob		2,474	8,190	149,320	269,700
Mixed Vegetables		4,304	169	23,935	48,439
Okra		21,794		877	43,360
Onion Rings		896	389	642	8,576
Onions, Other		1,345	1,226	14,877	28,738
Blackeye Peas		1,474		304	4,957
Green Peas		1,853	19,032	130,453	241,349
Peas & Carrots Mixed		398	21	3,954	8,322
Spinach		12,138	238	25,518	66,326
Squash, Summer/Zucchini		5,067	770	18,561	45,389
Southern Greens		15,862		1,149	31,641
Other Vegetables		36,312	5,482	174,653	359,745
Potatoes					
French Fries	2,020	24,369	260,119	502,137	1,068,221
Other Frozen	161	3,991	60,256	88,834	230,688
Meat					
Frozen Beef					
Boneless ⁴	6,620	66,625	3,031	62,514	370,666
Beef Cuts ⁵	3,876	9,763	6,721	6,522	56,335
Frozen Pork					
Ribs ⁶	1,692	1,990	90	2,118	63,629
Trimming ⁷	148	4,328	24	358	45,876
Other ⁸	3,730	2,938	170	3,672	76,915
Other					
Veal	2	106		2,930	5,591
Lamb & Mutton	27	145	736	1,657	10,885

¹ East North Central combined with South Atlantic. Mountain and West North Central Combined with West South Central.

² Middle Atlantic combined with South Atlantic.

³ New England combined with Middle Atlantic. East South Central combined with South Atlantic.

⁴ Includes all boxed boneless beef, such as ground beef, roasts, steaks, loins, strips, rounds, trimmings, etc. Variety meats (edible offal), such as tongues, livers, hearts, kidneys, and other organs removed from slaughtered beef, are included as miscellaneous freezer stocks.

⁵ Includes all boxed primal beef cuts, bone-in.

⁶ Includes spareribs and backribs.

⁷ Includes 42% regular trimmings, 72% special trimmings, boneless picnic meat, jowls, neckbone trimmings, blade, cheek, head, and shank meat, etc. Packaged bacon, sausage, and processed items, such as hot dogs and luncheon meats, are included in miscellaneous cooler or freezer stocks.

⁸ Includes ears, tails, feet, neckbones and snouts.

⁹ Includes tongues, kidneys, livers, stomachs, hearts, chitterlings, salivary glands, and other organs removed from slaughtered hogs.

¹⁰ Includes product unable to be classified elsewhere in this report.

**Public General Warehouses: Cold Storage Space Occupied
by Region and United States, November 2001**

Region	Cooler				Freezer			
	Usable Space	Usable Space Occupied			Usable Space	Usable Space Occupied		
	Nov 30 2001	Nov 30 2000	Oct 31 2001	Nov 30 2001	Nov 30 2001	Nov 30 2000	Oct 31 2001	Nov 30 2001
	<i>1,000 Cu Ft</i>	<i>Percent</i>	<i>Percent</i>	<i>Percent</i>	<i>1,000 Cu Ft</i>	<i>Percent</i>	<i>Percent</i>	<i>Percent</i>
New England	2,200	57	76	73	19,867	73	55	60
Middle Atlantic	42,288	42	71	74	110,214	65	69	65
E. North Central	62,425	42	40	44	212,999	47	48	51
W. North Central	46,674	29	35	36	156,324	54	54	53
South Atlantic	49,924	33	30	31	195,137	54	55	52
E. South Central	9,435	40	57	59	72,496	38	43	40
W. South Central	22,038	24	17	17	135,855	56	53	50
Mountain	5,697	36	20	20	58,658	64	51	50
Pacific	44,221	35	37	34	290,683	73	70	67
US	284,902	35	40	41	1,252,233	58	57	56

Cold Storage Regions



**Apples in Cold Storage: By State
and United States, November 2001**

State	All Warehouses		
	Nov 30, 2000	Oct 31, 2001	Nov 30, 2001
	<i>1,000 Pounds</i>	<i>1,000 Pounds</i>	
CA	109,346	135,687	103,331
MI	343,731	484,244	392,432
N ENG	52,530	57,616	45,625
NY	301,098	309,834	317,184
OH	16,370	25,165	16,665
OR	58,139	63,138	40,253
PA	257,107	342,831	280,961
VA	171,872	181,942	164,797
WA	4,106,216	3,700,000	3,393,600
WV	49,578	98,618	84,601
Other States	166,919	165,287	119,781
US	5,632,906	5,564,362	4,959,230

Survey Procedures: Questionnaires are mailed about the 24th of each month to all operators on the list of approximately 1,400 public and private cold storage warehouses. In addition, apple data are obtained from special surveys and other sources (State Departments of Agriculture, U.S. Apple Association, etc.). All survey data represent stocks as of the end of the month.

Data are collected from warehouses artificially cooled to a temperature of 50 degrees Fahrenheit or lower, and whose food products are normally stored for 30 days or more. All food items in these facilities are reported regardless of the number of days stored at the time of the report. Also included are specialized storage facilities meeting the 30 day requirement, such as fruit houses, dairy manufacturing plants, frozen fruit, fruit juice, and vegetable processors, and poultry and meat packing plants. Excluded are stocks in space maintained by wholesalers, jobbers, distributors, chain stores, locker plants containing individual lockers, meat packer branch houses, and frozen food processors whose entire inventories are turned over more than once a month.

Estimating Procedures: Data for reporting firms are added to estimates for non-reporting firms to obtain regional and National totals. Estimates for non-reporting firms are obtained by multiplying the previous month's figure by a percent change from the previous month. The percent change is calculated for each item from totals of the current and previous month summed from firms that reported both months.

Revision Policy: Data are revised the following month based on late reports or corrected data. Final figures are published in the annual summary in February of the following year.

Reliability: Reports are received from 900 firms each month which represent about 70 percent of the total capacity. Firms that are not on the list or firms who have never reported are not represented in the data. Monthly data can vary due to different firms reporting month to month. Survey data are also subject to non-sampling errors such as omissions and mistakes in reporting and in processing the data. While these errors cannot be measured directly, they are minimized by carefully reviewing all reported data for consistency and reasonableness.

The next "Cold Storage" report will be released at 3 p.m. ET on January 18, 2002.

The United States Department of Agriculture (USDA) prohibits discrimination in all its programs on the basis of race, color, national origin, gender, religion, age, disability, political beliefs, sexual orientation, and marital or family status. (Not all prohibited bases apply to all programs.) Persons with disabilities who require alternative means for communication of program information (braille, large print, audiotape, etc.) should contact the USDA's TARGET Center at 202-720-2600 (voice and TDD).

To file a complaint of discrimination, write USDA, Director, Office of Civil Rights, Room 326-W, Whitten Building, 1400 Independence Avenue, SW, Washington, D.C., 20250-9410, or call 202-720-5964 (voice or TDD). USDA is an equal opportunity provider and employer.

ACCESS TO REPORTS!!

For your convenience, there are several ways to obtain NASS reports, data products, and services:

INTERNET ACCESS

All NASS reports are available free of charge on the worldwide Internet. For access, connect to the Internet and go to the NASS Home Page at: <http://www.usda.gov/nass/>. Select "Today's Reports" or Publications and then Reports by Calendar or Publications and then Search, by Title or Subject.

E-MAIL SUBSCRIPTION

There are two options for subscribing via e-mail. All NASS reports are available by subscription free of charge direct to your e-mail address. 1) Starting with the NASS Home Page at <http://www.usda.gov/nass/>, click on **Publications**, then click on the **Subscribe by E-mail** button which takes you to the page describing e-mail delivery of reports. Finally, click on **Go to the Subscription Page** and follow the instructions. 2) If you do NOT have Internet access, send an e-mail message to: usda-reports@usda.mannlib.cornell.edu. In the body of the message type the word: **list**.

AUTOFAX ACCESS

NASSFax service is available for some reports from your fax machine. Please call 202-720-2000, using the handset attached to your fax. Respond to the voice prompts. Document 0411 is a list of available reports.

PRINTED REPORTS OR DATA PRODUCTS

CALL OUR TOLL-FREE ORDER DESK: 800-999-6779 (U.S. and Canada)
Other areas, please call 703-605-6220 FAX: 703-605-6900
(Visa, MasterCard, check, or money order acceptable for payment.)

ASSISTANCE

For **assistance** with general agricultural statistics or further information about NASS or its products or services, contact the **Agricultural Statistics Hotline** at **800-727-9540**, 7:30 a.m. to 4:00 p.m. ET, or e-mail: nass@nass.usda.gov.

Sharpen Your Strategy at USDA's 78th Outlook Forum



**February 21-22, 2002
Crystal Gateway
Marriott Hotel
Arlington, Virginia**

- ◆ **New Farm Legislation**
- ◆ **Biotech Crops in World Trade**
- ◆ **Protecting Livestock and Crops**
- ◆ **Tracking Crop and Product
Identity in the Food Chain**
- ◆ **2002 Commodity Prospects**
- ◆ **Competing in Global Markets**
- ◆ **Climate and Agriculture**

Put next year's economic and business outlook in focus at Outlook Forum 2002.

Attend this popular event to hear the latest on market-shaping developments ranging from farm legislation to food safety concerns. Government officials, business leaders and commodity analysts will assess the outlook for 2002 and beyond, and noted economist Larry Chimerine will discuss U.S. and global economic prospects.

Focus sessions featuring rural innovators will highlight trends in bio-energy, contract negotiation, rural development and other areas. To stretch your planning horizon, USDA will release new 10-year commodity projections.

Visit the Forum home page for complete program details and online registration.

Register Today! www.usda.gov/oce (202) 314-3451