



Cold Storage

Released April 19, 2002, by the National Agricultural Statistics Service (NASS), Agricultural Statistics Board, U.S. Department of Agriculture. For information on "Cold Storage" call Linda Simpson at (202) 720-8784, office hours 7:00 a.m. to 4:30 p.m. ET.

HIGHLIGHTS

Frozen food stocks in refrigerated warehouses on March 31, 2002, were greater than year earlier levels for beef, poultry, pork, red meat, vegetables, and potatoes. Cooler stocks of pecans were also above last year.

Butter stocks were 13 percent above February 2002 and 53 percent above a year ago.

Total red meat supplies in freezers were 1 percent below February 2002 but 22 percent above March 2001. Frozen pork stocks were 5 percent above last month and also 22 percent above last year. Stocks of pork bellies were 6 percent above last month and 34 percent above March 2001 stocks.

Total frozen poultry supplies on March 31, 2002, were up 8 percent from last month and were 23 percent above last year's level. Total stocks of chicken were up 9 percent from last month and were 22 percent above last year. Total pounds of turkey in freezers increased 8 percent from last month and 25 percent from last year.

Public cooler occupancy on March 31, 2002, was at 39 percent of capacity, up 5 points from last year. Public freezer occupancy, at 49 percent, was down 2 percentage points from last year.

Special Note

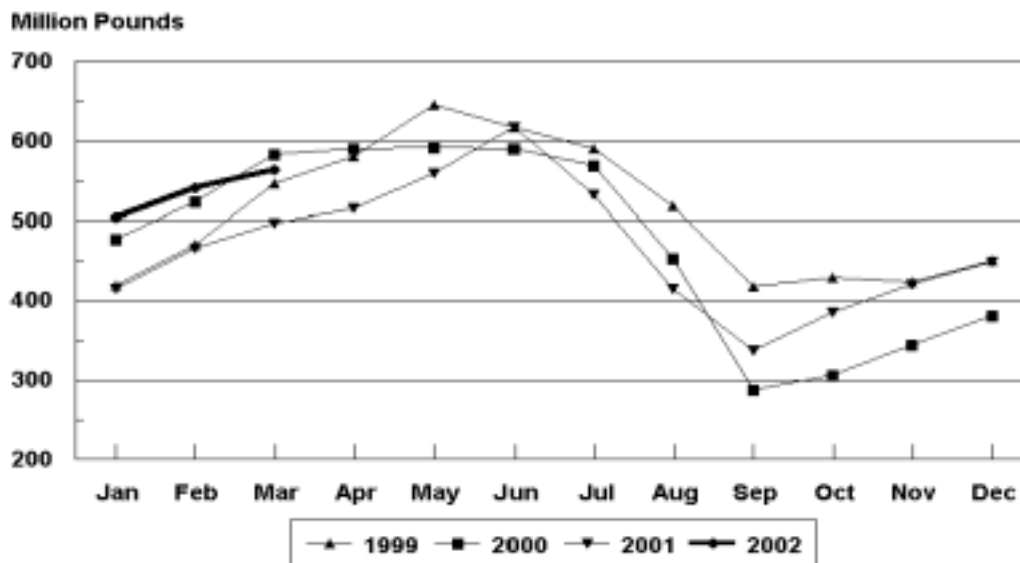
Beginning in this release are pounds of strawberries by type of pack (page 5) in the United States.

This page is intentionally blank.

Table of Contents

	Page
Stocks in Cold Storage: By Commodity, United States, March 2002	4
Stocks in Cold Storage: By Commodity, Region, and United States, February 28, 2002	8
Stocks in Cold Storage: By Commodity, Region, and United States, March 31, 2002	12
Public General Warehouses: Cold Storage Space Occupied by Region and United States, March 2002	16
Apples in Cold Storage: By State and United States, March 31, 2001 and 2002	17
Survey and Estimating Procedures, Revision Policy and Reliability	18

**Shelled Peanuts
Cold Storage Stocks, 1999-2002
United States**



**Stocks in Cold Storage: By Commodity,
United States, March 2002**

Commodity	Stocks in All Warehouses			Percent of		Public Warehouse Stocks
	Mar 31, 2001	Feb 28, 2002	Mar 31, 2002	Mar 2001	Feb 2002	Mar 31, 2002
	<i>1,000 Pounds</i>	<i>1,000 Pounds</i>	<i>1,000 Pounds</i>	<i>Percent</i>	<i>Percent</i>	<i>1,000 Lbs</i>
Fresh Fruit						
Apples						
Regular Storage	233,516	324,764	187,292	80	58	
Controlled Atmosphere	2,369,296	2,632,823	2,033,890	86	77	
Total	2,602,812	2,957,587	2,221,182	85	75	347
Pears						
Bartlett		916	25		3	
Other Varieties	112,537	187,141	135,727	121	73	
Total	112,537	188,057	135,752	121	72	134
Nuts						
Shelled						
Peanuts	496,615	541,345	562,637	113	104	
Pecans	45,672	42,295	46,163	101	109	
Other Shelled	178,425	135,882	128,963	72	95	
Total	720,712	719,522	737,763	102	103	375,485
In-Shell						
Peanuts	23,747	15,645	17,361	73	111	
Pecans	150,389	195,471	189,424	126	97	
Other In-Shell	16,054	14,185	11,447	71	81	
Total	190,190	225,301	218,232	115	97	63,681
Dairy Products						
Butter, Total	96,208	130,595	147,497	153	113	130,290
(Government Owned)	717	1,200	1,323	185	110	
Natural Cheese						
American, Total	500,430	485,070	492,439	98	102	
(Government Owned)	1,955	753	733	37	97	
Swiss	12,680	12,598	12,780	101	101	
Other Natural Cheese	198,517	217,976	222,407	112	102	
Total	711,627	715,644	727,626	102	102	420,649
Eggs, Frozen						
Whites	2,242	2,204	1,565	70	71	
Yolks	879	1,036	877	100	85	
Whole & Mixed	9,851	7,282	6,268	64	86	
Unclassified	1,629	3,383	2,944	181	87	
Total	14,601	13,905	11,654	80	84	11,404
Frozen Poultry						
Chicken						
Broilers, Fryers						
Roasters (Whole)	15,585	26,981	29,271	188	108	
Hens, Mature Chickens	6,486	4,077	4,925	76	121	
Other	620,881	694,037	753,378	120	108	
Total Chicken	642,952	725,095	787,574	122	109	

See footnote(s) at end of table.

--continued

**Stocks in Cold Storage: By Commodity,
United States, March 2002**

Commodity	Stocks in All Warehouses			Percent of		Public Warehouse Stocks
	Mar 31, 2001	Feb 28, 2002	Mar 31, 2002	Mar 2001	Feb 2002	Mar 31, 2002
	<i>1,000 Pounds</i>	<i>1,000 Pounds</i>	<i>1,000 Pounds</i>	<i>Percent</i>	<i>Percent</i>	<i>1,000 Lbs</i>
Turkeys						
Toms (Whole Carcasses)		117,246	125,320		107	
Hens (Whole Carcasses)		83,883	93,028		111	
Whole Turkeys	199,986	201,129	218,348	109	109	
Other Turkey	155,778	208,737	225,439	145	108	
Total Turkey	355,764	409,866	443,787	125	108	
Ducks	4,883	7,097	6,710	137	95	
Total Poultry	1,003,599	1,142,058	1,238,071	123	108	1,073,609
Frozen Fruit						
Apples	70,555	67,375	73,160	104	109	
Apricots	4,540	4,343	3,439	76	79	
Blackberries, Total	17,866	17,491	15,903	89	91	
IQF	11,938	10,207	9,376	79	92	
Pails and Tubs	1,446	2,492	2,212	153	89	
Barrels, 400 lbs net	2,606	3,578	3,187	122	89	
Concentrate	1,876	1,214	1,128	60	93	
Blueberries	63,218	84,392	75,016	119	89	
Boysenberries	3,387	2,449	2,340	69	96	
Cherries, Tart (RTP)	88,595	115,834	105,174	119	91	
Cherries, Tart (Juice)	1,234	1,846	1,896	154	103	
Cherries, Sweet	10,706	12,177	10,535	98	87	
Grapes	3,895	4,114	3,876	100	94	
Peaches	48,511	51,179	43,485	90	85	
Raspberries, Black	1,174	2,486	2,275	194	92	
Raspberries, Red, Total	32,826	36,076	31,682	97	88	
IQF	12,185	13,939	11,985	98	86	
Pails and Tubs	11,113	7,865	7,175	65	91	
Barrels, 400 lbs net	8,399	12,974	11,393	136	88	
Concentrate	1,129	1,298	1,129	100	87	
Strawberries, Total	209,761	171,022	149,760	71	88	
IQF and Poly			93,050			
Pails and Tubs			36,872			
Barrels and Drums			12,491			
Juice Stock			7,347			
Other Frozen Fruit	716,384	375,716	340,980	48	91	
Total	1,272,652	946,500	859,521	68	91	702,783
Frozen Juice						
Orange Juice Conc. ¹	1,735,462	1,773,805	1,804,437	104	102	
(Gallon Equivalent)	175,370	179,245	182,340			
Other Juice Concentrate	309,124	290,873	305,319	99	105	
Total	2,044,586	2,064,678	2,109,756	103	102	228,080

See footnote(s) at end of table.

--continued

**Stocks in Cold Storage: By Commodity,
United States, March 2002**

Commodity	Stocks in All Warehouses			Percent of		Public Warehouse Stocks
	Mar 31, 2001	Feb 28, 2002	Mar 31, 2002	Mar 2001	Feb 2002	Mar 31, 2002
	<i>1,000 Pounds</i>	<i>1,000 Pounds</i>	<i>1,000 Pounds</i>	<i>Percent</i>	<i>Percent</i>	<i>1,000 Lbs</i>
Frozen Vegetables						
Asparagus	9,318	8,618	7,697	83	89	
Limas, Fordhook	8,736	10,647	8,934	102	84	
Limas, Baby	26,555	43,239	40,266	152	93	
Green Beans, Reg. Cut	90,844	105,090	89,298	98	85	
Green Beans, Fr. Style	20,145	15,212	13,601	68	89	
Broccoli, Spears	41,030	47,433	49,910	122	105	
Broccoli, Chopped & Cut	78,051	78,745	74,528	95	95	
Brussels Sprouts	19,677	15,173	14,434	73	95	
Carrots, Diced	99,715	75,322	71,007	71	94	
Carrots, Other	118,215	147,789	132,196	112	89	
Cauliflower	36,682	34,361	34,236	93	100	
Corn, Cut	194,544	292,627	257,623	132	88	
Corn, Cob	148,930	196,801	175,326	118	89	
Mixed Vegetables	41,962	56,747	50,547	120	89	
Okra	32,852	33,967	27,544	84	81	
Onion Rings	7,744	7,183	6,849	88	95	
Onions, Other	36,925	32,182	34,135	92	106	
Blackeye Peas	5,035	5,891	6,353	126	108	
Green Peas	179,626	183,040	158,237	88	86	
Peas & Carrots Mixed	8,078	11,154	11,396	141	102	
Spinach	61,186	66,963	80,169	131	120	
Squash, Summer/Zucchini	27,806	40,681	35,155	126	86	
Southern Greens	29,430	30,252	27,422	93	91	
Other Vegetables	267,798	304,117	279,941	105	92	
Total	1,590,884	1,843,234	1,686,804	106	92	1,233,941
Potatoes						
French Fries	998,851	1,031,906	1,016,258	102	98	
Other Frozen	222,076	240,062	264,884	119	110	
Total	1,220,927	1,271,968	1,281,142	105	101	949,415

See footnote(s) at end of table.

--continued

**Stocks in Cold Storage: By Commodity,
United States, March 2002 (Continued)**

Commodity	Stocks in All Warehouses			Percent of		Public Warehouse Stocks
	Mar 31, 2001	Feb 28, 2002	Mar 31, 2002	Mar 2001	Feb 2002	Mar 31, 2002
	<i>1,000 Pounds</i>	<i>1,000 Pounds</i>	<i>1,000 Pounds</i>	<i>Percent</i>	<i>Percent</i>	<i>1,000 Lbs</i>
Meat						
Frozen Beef						
Boneless ²	280,364	389,100	362,072	129	93	
Beef Cuts ³	52,234	51,719	51,022	98	99	
Total	332,598	440,819	413,094	124	94	410,518
(Government Owned)	3,085	4,308	4,595	149	107	
Frozen Pork						
Picnics, Bone-in	10,695	12,617	14,228	133	113	
Hams, Total	63,804	69,224	67,291	105	97	65,241
Bone-in	24,144	31,301	27,957	116	89	27,426
Boneless ⁴	39,660	37,923	39,334	99	104	37,815
Bellies	45,440	57,569	61,000	134	106	
Loins, Total	30,501	44,281	43,723	143	99	40,460
Bone-in	14,479	20,696	20,412	141	99	
Boneless ⁵	16,022	23,585	23,311	145	99	
Ribs ⁶	63,912	79,917	83,195	130	104	
Butts	13,532	17,968	17,174	127	96	
Trimmings ⁷	55,187	59,988	65,556	119	109	
Other ⁸	78,412	77,100	85,100	109	110	
Variety Meats ⁹	49,914	51,429	53,758	108	105	
Unclassified ¹⁰	20,903	35,122	36,976	177	105	
Total	432,300	505,215	528,001	122	105	473,232
(Government Owned)	8,154	1,386	1,471	18	106	
Other						
Veal	3,816	4,774	3,908	102	82	
Lamb & Mutton	13,729	10,869	10,127	74	93	
Total	17,545	15,643	14,035	80	90	13,853
Canned						
Canned Hams	5,429	4,342	5,053	93	116	
Other Canned Meat	66	275	395	598	144	
Total	5,495	4,617	5,448	99	118	5,277
Total	787,938	966,294	960,578	122	99	902,880
Miscellaneous						
Cooler	712,479	770,060	703,586	99	91	339,664
Freezer	2,096,281	2,207,585	2,142,726	102	97	2,081,984
Total	2,808,760	2,977,645	2,846,312	101	96	2,421,648
Commodities						
Stored in Coolers	5,067,418	5,593,268	4,762,420	94	85	1,342,915
Stored in Freezers	9,910,990	10,569,720	10,419,470	105	99	7,309,109
Total	14,978,408	16,162,988	15,181,890	101	94	8,652,024

¹ Adjusted to 42.0 degrees Brix equivalent (9.896 pounds per gallon).

² Includes all boxed boneless beef, such as ground beef, roasts, steaks, loins, strips, rounds, trimmings, etc. Variety meats (edible offal), such as tongues, livers, hearts, kidneys, and other organs removed from slaughtered beef, are included as miscellaneous freezer stocks.

³ Includes all boxed primal beef cuts, bone-in.

⁴ Includes full ham, bone removed and individual muscles separated.

⁵ Includes pork tenderloins.

⁶ Includes spareribs and backribs.

⁷ Includes 42% regular trimmings, 72% special trimmings, boneless picnic meat, jowls, neckbone trimmings, blade, cheek, head, and shank meat, etc. Packaged bacon, sausage, and processed items, such as hot dogs and luncheon meats, are included in miscellaneous cooler or freezer stocks.

⁸ Includes ears, tails, feet, neckbones and snouts.

⁹ Includes tongues, kidneys, livers, stomachs, hearts, chitterlings, salivary glands, and other organs removed from slaughtered hogs.

¹⁰ Includes product unable to be classified elsewhere in this report.

**Stocks in Cold Storage: By Commodity, Region,
and United States, February 28, 2001**

Commodity	New England	Middle Atlantic	East North Central	West North Central	South Atlantic
	<i>1,000 Pounds</i>	<i>1,000 Pounds</i>	<i>1,000 Pounds</i>	<i>1,000 Pounds</i>	<i>1,000 Pounds</i>
Total Fresh Apples	17,588	444,700	209,175	59	172,372
Nuts					
Shelled					
Peanuts		16	130	28	352,470
Pecans ¹		97			15,552
In-Shell					
Pecans ¹					55,224
Dairy Products					
Natural Cheese					
American, Total	19,978	57,829	182,742	117,046	3,738
Other Natural Cheese	589	38,087	101,460	61,824	159
Frozen Poultry					
Chicken					
Broilers, Fryers					
Roasters (Whole)	62	1,549	1,133	967	6,175
Hens, Mature Chickens		166	153	196	2,218
Other	2,645	17,214	17,220	26,535	181,881
Total Chicken	2,707	18,929	18,506	27,698	190,274
Turkeys					
Whole Turkeys	1,083	6,030	1,672	43,323	91,529
Other Turkey	420	10,456	19,986	53,675	79,742
Total Turkey	1,503	16,486	21,658	96,998	171,271
Ducks		346	6,624	3	5
Total Poultry	4,210	35,761	46,788	124,699	361,550
Frozen Fruit					
Apples	27	18,914	33,996	149	367
Blueberries	15,556	5,176	42,892	200	2,585
Cherries, Tart (RTP)	23	6,429	101,970	191	397
Cherries, Sweet		237	8,974	76	6
Peaches	20	1,833	3,618	279	394
Raspberries, Red	3	789	1,292	66	20
Strawberries, Total	125	3,451	3,428	223	827
Other Frozen Fruit	43,355	12,929	178,746	1,946	2,026

See footnote(s) at end of table.

--continued

**Stocks in Cold Storage: By Commodity, Region,
and United States, February 28, 2001 (continued)**

Commodity	East South Central	West South Central	Mountain	Pacific	US Total
	<i>1,000 Pounds</i>	<i>1,000 Pounds</i>	<i>1,000 Pounds</i>	<i>1,000 Pounds</i>	<i>1,000 Pounds</i>
Total Fresh Apples		4,344	10,745	2,098,604	2,957,587
Nuts					
Shelled					
Peanuts	56,791	129,420	106	2,384	541,345
Pecans ¹	1,015	24,912		719	42,295
In-Shell					
Pecans ¹	4,400	135,847			195,471
Dairy Products					
Natural Cheese					
American, Total	30	2,871	9,274	91,562	485,070
Other Natural Cheese	170	201	4,332	11,154	217,976
Frozen Poultry					
Chicken					
Broilers, Fryers					
Roasters (Whole)	2,785	12,190	312	1,808	26,981
Hens, Mature Chickens	409	201	1	733	4,077
Other	123,378	286,173	2,015	36,976	694,037
Total Chicken	126,572	298,564	2,328	39,517	725,095
Turkeys					
Whole Turkeys	963	25,385	6,214	24,930	201,129
Other Turkey	256	28,455	8,320	7,427	208,737
Total Turkey	1,219	53,840	14,534	32,357	409,866
Ducks		15	12	92	7,097
Total Poultry	127,791	352,419	16,874	71,966	1,142,058
Frozen Fruit					
Apples	85	1,365	146	12,326	67,375
Blueberries	87	678	86	17,132	84,392
Cherries, Tart (RTP)	7	168	1,507	5,142	115,834
Cherries, Sweet	2	37	427	2,418	12,177
Peaches	32	1,622	33	43,348	51,179
Raspberries, Red	120	432	3	33,351	36,076
Strawberries, Total	870	13,442	87	148,569	171,022
Other Frozen Fruit	251	10,471	5,141	120,851	375,716

See footnote(s) at end of table.

--continued

**Stocks in Cold Storage: By Commodity, Region,
and United States, February 28, 2002 (continued)**

Commodity	New England	Middle Atlantic	East North Central	West North Central	South Atlantic
	<i>1,000 Pounds</i>	<i>1,000 Pounds</i>	<i>1,000 Pounds</i>	<i>1,000 Pounds</i>	<i>1,000 Pounds</i>
Frozen Juice					
Orange Juice Conc. ²	77		629	103	1,697,431
Other Juice Concentrate	393	29,761	21,882	2,014	105,293
Frozen Vegetables ³					
Asparagus		823	2,834	50	291
Limas, Fordhook		964	815	74	904
Limas, Baby		6,759	5,601	1,159	13,858
Green Beans, Reg. Cut		24,418	24,022	1,255	5,247
Green Beans, Fr. Style		5,120	2,888	416	185
Broccoli, Spears		7,037	4,686	28	1,916
Broccoli, Chopped & Cut		5,144	9,128	8,983	8,995
Brussels Sprouts		2,006	1,668	131	981
Carrots, Diced		11,195	18,120	806	5,506
Carrots, Other		13,833	28,208	1,108	5,370
Cauliflower		2,465	3,647	393	1,272
Corn, Cut		34,651	60,673	22,499	5,529
Corn, Cob		28,798	33,744	22,098	3,819
Mixed Vegetables		8,610	11,685	1,017	1,971
Okra		1,879	730	2,879	6,341
Onion Rings		574	3,031	961	1,053
Onions, Other		2,936	5,411	302	2,026
Blackeye Peas		375	87	38	3,893
Green Peas		30,256	27,214	5,994	5,172
Peas & Carrots Mixed		1,625	1,387	15	935
Spinach		17,053	5,336	437	5,979
Squash, Summer/Zucchini		5,315	12,566	555	5,337
Southern Greens		3,009	976	434	10,300
Other Vegetables		46,391	29,729	20,348	29,821
Potatoes					
French Fries	33,759	32,453	59,745	134,970	29,781
Other Frozen	4,012	15,680	37,347	10,860	2,502
Meat					
Frozen Beef					
Boneless ⁴	5,705	29,402	53,427	131,702	26,173
Beef Cuts ⁵	2,925	688	10,262	7,399	3,934
Frozen Pork					
Ribs ⁶	401	2,462	20,709	31,989	13,549
Trimmings ⁷	180	1,732	13,069	29,174	6,831
Other ⁸	2,152	1,630	16,789	35,433	12,063
Other					
Veal	130	876	1,023	246	39
Lamb & Mutton	312	2,571	462	2,766	463

See footnote(s) at end of table.

--continued

**Stocks in Cold Storage: By Commodity, Region,
and United States, February 28, 2002 (continued)**

Commodity	East South Central	West South Central	Mountain	Pacific	US Total
	<i>1,000 Pounds</i>	<i>1,000 Pounds</i>	<i>1,000 Pounds</i>	<i>1,000 Pounds</i>	<i>1,000 Pounds</i>
Frozen Juice					
Orange Juice Concentrate	44	8,111	139	67,271	1,773,805
Other Juice Concentrate	162	26,062	1,203	104,103	290,873
Frozen Vegetables ³					
Asparagus		490	75	4,055	8,618
Limas, Fordhook		330		7,560	10,647
Limas, Baby		1,792	2,869	11,201	43,239
Green Beans, Reg. Cut		2,564	89	47,495	105,090
Green Beans, Fr. Style		310	96	6,197	15,212
Broccoli, Spears		18,738	16	15,012	47,433
Broccoli, Chopped & Cut		18,949	716	26,830	78,745
Brussels Sprouts		501	1	9,885	15,173
Carrots, Diced		1,443	9	38,243	75,322
Carrots, Other		8,031	432	90,807	147,789
Cauliflower		6,097	660	19,827	34,361
Corn, Cut		1,400	2,107	165,768	292,627
Corn, Cob		2,169	1,029	105,144	196,801
Mixed Vegetables		6,605	214	26,645	56,747
Okra		21,204		934	33,967
Onion Rings		538	771	255	7,183
Onions, Other		1,533	1,550	18,424	32,182
Blackeye Peas		874		624	5,891
Green Peas		2,948	13,322	98,134	183,040
Peas & Carrots Mixed		675	1	6,516	11,154
Spinach		20,322	179	17,657	66,963
Squash, Summer/Zucchini		3,485	756	12,667	40,681
Southern Greens		14,360		1,173	30,252
Other Vegetables		30,046	5,025	142,757	304,117
Potatoes					
French Fries	1,800	27,364	254,191	457,843	1,031,906
Other Frozen	129	17,502	50,160	101,870	240,062
Meat					
Frozen Beef					
Boneless ⁴	5,885	73,418	10,941	52,447	389,100
Beef Cuts ⁵	3,990	8,398	8,841	5,282	51,719
Frozen Pork					
Ribs ⁶	3,513	4,690	126	2,478	79,917
Trimming ⁷	250	8,159	8	585	59,988
Other ⁸	3,148	3,180	177	2,528	77,100
Other					
Veal	2	126		2,332	4,774
Lamb & Mutton	178	106	458	3,553	10,869

¹ East North Central combined with South Atlantic. Mountain and West North Central combined with West South Central.

² Middle Atlantic combined with South Atlantic.

³ New England combined with Middle Atlantic. East South Central combined with South Atlantic.

⁴ Includes all boxed boneless beef, such as ground beef, roasts, steaks, loins, strips, rounds, trimmings, etc. Variety meats (edible offal), such as tongues, livers, hearts, kidneys, and other organs removed from slaughtered beef, are included as miscellaneous freezer stocks.

⁵ Includes all boxed primal beef cuts, bone-in.

⁶ Includes spareribs and backribs.

⁷ Includes 42% regular trimmings, 72% special trimmings, boneless picnic meat, jowls, neckbone trimmings, blade, cheek, head, and shank meat, etc. Packaged bacon, sausage, and processed items, such as hot dogs and luncheon meats, are included in miscellaneous cooler or freezer stocks.

⁸ Includes ears, tails, feet, neckbones and snouts.

⁹ Includes tongues, kidneys, livers, stomachs, hearts, chitterlings, salivary glands, and other organs removed from slaughtered hogs.

¹⁰ Includes product unable to be classified elsewhere in this report.

**Stocks in Cold Storage: By Commodity, Region,
and United States, March 31, 2002**

Commodity	New England	Middle Atlantic	East North Central	West North Central	South Atlantic
	<i>1,000 Pounds</i>	<i>1,000 Pounds</i>	<i>1,000 Pounds</i>	<i>1,000 Pounds</i>	<i>1,000 Pounds</i>
Total Fresh Apples	10,895	307,244	186,226	42	132,046
Nuts					
Shelled					
Peanuts		34	132	29	368,546
Pecans ¹		104			17,321
In-Shell					
Pecans ¹					53,713
Dairy Products					
Natural Cheese					
American, Total	20,186	57,309	187,228	124,133	3,585
Other Natural Cheese	530	38,725	106,152	61,631	158
Frozen Poultry					
Chicken					
Broilers, Fryers					
Roasters (Whole)	6	1,574	1,038	982	7,997
Hens, Mature Chickens	37	170	277	165	2,763
Other	2,664	18,348	17,820	30,031	194,133
Total Chicken	2,707	20,092	19,135	31,178	204,893
Turkeys					
Whole Turkeys	1,745	5,979	3,299	42,524	102,203
Other Turkey	601	13,047	22,629	62,226	81,515
Total Turkey	2,346	19,026	25,928	104,750	183,718
Ducks		298	6,270	3	
Total Poultry	5,053	39,416	51,333	135,931	388,611
Frozen Fruit					
Apples	23	19,558	39,967	141	431
Blueberries	14,759	4,262	38,844	233	2,236
Cherries, Tart (RTP)	8	5,221	93,204	133	358
Cherries, Sweet		259	7,931	72	9
Peaches	14	1,628	3,292	373	310
Raspberries, Red	1	739	1,207	78	18
Strawberries, Total	109	3,534	3,011	235	690
Other Frozen Fruit	33,013	14,225	163,434	3,143	3,093

See footnote(s) at end of table.

--continued

**Stocks in Cold Storage: By Commodity, Region,
and United States, March 31, 2002 (continued)**

Commodity	East South Central	West South Central	Mountain	Pacific	US Total
	<i>1,000 Pounds</i>	<i>1,000 Pounds</i>	<i>1,000 Pounds</i>	<i>1,000 Pounds</i>	<i>1,000 Pounds</i>
Total Fresh Apples		4,127	3,066	1,577,536	2,221,182
Nuts					
Shelled					
Peanuts	55,931	134,508	118	3,339	562,637
Pecans ¹	1,280	26,690		768	46,163
In-Shell					
Pecans ¹	3,750	131,961			189,424
Dairy Products					
Natural Cheese					
American, Total	103	2,968	8,811	88,116	492,439
Other Natural Cheese	214	194	3,512	11,291	222,407
Frozen Poultry					
Chicken					
Broilers, Fryers					
Roasters (Whole)	3,766	11,524	356	2,028	29,271
Hens, Mature Chickens	548	210		755	4,925
Other	142,558	305,395	2,171	40,258	753,378
Total Chicken	146,872	317,129	2,527	43,041	787,574
Turkeys					
Whole Turkeys	1,052	28,192	4,554	28,800	218,348
Other Turkey	257	28,528	8,407	8,229	225,439
Total Turkey	1,309	56,720	12,961	37,029	443,787
Ducks		12	12	115	6,710
Total Poultry	148,181	373,861	15,500	80,185	1,238,071
Frozen Fruit					
Apples	107	1,402	127	11,404	73,160
Blueberries	110	647	79	13,846	75,016
Cherries, Tart (RTP)	20	154	1,389	4,687	105,174
Cherries, Sweet	2	32	418	1,812	10,535
Peaches	20	1,376	17	36,455	43,485
Raspberries, Red	118	414	1	29,106	31,682
Strawberries, Total	1,168	11,646	61	129,306	149,760
Other Frozen Fruit	262	11,004	5,337	107,469	340,980

See footnote(s) at end of table.

--continued

**Stocks in Cold Storage: By Commodity, Region,
and United States, March 31, 2002 (continued)**

Commodity	New England	Middle Atlantic	East North Central	West North Central	South Atlantic
	<i>1,000 Pounds</i>	<i>1,000 Pounds</i>	<i>1,000 Pounds</i>	<i>1,000 Pounds</i>	<i>1,000 Pounds</i>
Frozen Juice					
Orange Juice Conc. ²	95		568	93	1,727,926
Other Juice Concentrate	307	38,409	20,324	1,906	118,720
Frozen Vegetables ³					
Asparagus		590	2,432	27	284
Limas, Fordhook		783	543	92	723
Limas, Baby		6,522	5,387	1,007	11,896
Green Beans, Reg. Cut		23,225	20,941	1,125	3,874
Green Beans, Fr. Style		4,721	2,172	263	291
Broccoli, Spears		7,446	5,142	37	1,734
Broccoli, Chopped & Cut		4,995	9,168	7,655	7,618
Brussels Sprouts		2,124	1,467	88	846
Carrots, Diced		10,639	16,935	733	4,281
Carrots, Other		12,231	26,463	942	4,764
Cauliflower		2,232	3,210	294	1,200
Corn, Cut		30,439	55,008	22,370	4,778
Corn, Cob		26,457	30,131	19,382	3,753
Mixed Vegetables		7,254	9,879	799	1,731
Okra		1,784	685	1,735	6,158
Onion Rings		633	2,916	939	762
Onions, Other		3,163	5,896	304	1,972
Blackeye Peas		469	80	40	4,308
Green Peas		24,939	24,458	5,024	4,664
Peas & Carrots Mixed		1,535	1,325	20	743
Spinach		16,784	4,109	496	6,162
Squash, Summer/Zucchini		5,145	8,886	1,010	5,250
Southern Greens		3,066	1,077	166	8,980
Other Vegetables		42,460	27,352	19,516	29,410
Potatoes					
French Fries	28,979	30,897	57,991	121,311	27,436
Other Frozen	4,231	16,585	44,073	8,554	4,216
Meat					
Frozen Beef					
Boneless ⁴	2,085	28,145	48,722	120,160	26,129
Beef Cuts ⁵	2,676	765	8,075	7,453	3,770
Frozen Pork					
Ribs ⁶	424	3,408	21,171	32,770	13,343
Trimmings ⁷	157	1,656	13,399	32,340	7,236
Other ⁸	2,257	1,484	19,010	41,469	11,212
Other					
Veal		871	1,042	193	37
Lamb & Mutton	7	2,316	337	2,946	406

See footnote(s) at end of table.

--continued

**Stocks in Cold Storage: By Commodity, Region,
and United States, March 31, 2002 (continued)**

Commodity	East South Central	West South Central	Mountain	Pacific	US Total
	<i>1,000 Pounds</i>	<i>1,000 Pounds</i>	<i>1,000 Pounds</i>	<i>1,000 Pounds</i>	<i>1,000 Pounds</i>
Frozen Juice					
Orange Juice Concentrate	44	8,151	148	67,412	1,804,437
Other Juice Concentrate	183	27,268	966	97,236	305,319
Frozen Vegetables ³					
Asparagus		496	38	3,830	7,697
Limas, Fordhook		178		6,615	8,934
Limas, Baby		1,492	2,731	11,231	40,266
Green Beans, Reg. Cut		1,713	64	38,356	89,298
Green Beans, Fr. Style		265	101	5,788	13,601
Broccoli, Spears		19,705	7	15,839	49,910
Broccoli, Chopped & Cut		18,999	644	25,449	74,528
Brussels Sprouts		425	5	9,479	14,434
Carrots, Diced		1,626	38	36,755	71,007
Carrots, Other		9,582	335	77,879	132,196
Cauliflower		5,691	580	21,029	34,236
Corn, Cut		1,280	350	143,398	257,623
Corn, Cob		1,974	92	93,537	175,326
Mixed Vegetables		6,189	171	24,524	50,547
Okra		16,180		1,002	27,544
Onion Rings		503	882	214	6,849
Onions, Other		1,660	1,317	19,823	34,135
Blackeye Peas		858		598	6,353
Green Peas		2,596	12,343	84,213	158,237
Peas & Carrots Mixed		770	1	7,002	11,396
Spinach		21,037	162	31,419	80,169
Squash, Summer/Zucchini		3,212	704	10,948	35,155
Southern Greens		13,111		1,022	27,422
Other Vegetables		27,948	5,364	127,891	279,941
Potatoes					
French Fries	1,264	26,535	241,014	480,831	1,016,258
Other Frozen	207	15,726	55,959	115,333	264,884
Meat					
Frozen Beef					
Boneless ⁴	4,938	72,779	10,915	48,199	362,072
Beef Cuts ⁵	3,256	8,590	11,642	4,795	51,022
Frozen Pork					
Ribs ⁶	4,321	4,903	293	2,562	83,195
Trimming ⁷	317	9,883	10	558	65,556
Other ⁸	3,592	3,716	178	2,182	85,100
Other					
Veal	2	120	5	1,638	3,908
Lamb & Mutton	178	97	514	3,326	10,127

¹ East North Central combined with South Atlantic. Mountain and West North Central Combined with West South Central.

² Middle Atlantic combined with South Atlantic.

³ New England combined with Middle Atlantic. East South Central combined with South Atlantic.

⁴ Includes all boxed boneless beef, such as ground beef, roasts, steaks, loins, strips, rounds, trimmings, etc. Variety meats (edible offal), such as tongues, livers, hearts, kidneys, and other organs removed from slaughtered beef, are included as miscellaneous freezer stocks.

⁵ Includes all boxed primal beef cuts, bone-in.

⁶ Includes spareribs and backribs.

⁷ Includes 42% regular trimmings, 72% special trimmings, boneless picnic meat, jowls, neckbone trimmings, blade, cheek, head, and shank meat, etc. Packaged bacon, sausage, and processed items, such as hot dogs and luncheon meats, are included in miscellaneous cooler or freezer stocks.

⁸ Includes ears, tails, feet, neckbones and snouts.

⁹ Includes tongues, kidneys, livers, stomachs, hearts, chitterlings, salivary glands, and other organs removed from slaughtered hogs.

¹⁰ Includes product unable to be classified elsewhere in this report.

**Public General Warehouses: Cold Storage Space Occupied
by Region and United States, March 2002**

Region	Cooler				Freezer			
	Usable Space	Usable Space Occupied			Usable Space	Usable Space Occupied		
	Mar 31 2002	Mar 31 2001	Feb 28 2002	Mar 31 2002	Mar 31 2002	Mar 31 2001	Feb 28 2002	Mar 31 2002
	<i>1,000 Cu Ft</i>	<i>Percent</i>	<i>Percent</i>	<i>Percent</i>	<i>1,000 Cu Ft</i>	<i>Percent</i>	<i>Percent</i>	<i>Percent</i>
New England	2,191	50	60	57	20,093	56	65	63
Middle Atlantic	44,987	44	70	66	127,613	63	56	56
E. North Central	60,237	42	38	35	241,372	41	44	41
W. North Central	47,469	26	41	41	159,040	51	52	49
South Atlantic	49,812	34	35	34	202,234	53	52	49
E. South Central	9,535	42	47	44	74,450	32	40	39
W. South Central	32,898	21	21	18	146,410	50	54	52
Mountain	5,664	17	16	14	67,507	51	43	50
Pacific	47,277	29	36	33	311,019	59	51	53
US	300,070	34	41	39	1,349,738	51	50	49

Cold Storage Regions



**Apples in Cold Storage: By State
and United States, March 2002**

State	All Warehouses		
	Mar 31, 2001	Feb 28, 2002	Mar 31, 2002
	<i>1,000 Pounds</i>	<i>1,000 Pounds</i>	
CA	23,739	42,314	21,348
MI	160,481	199,318	178,996
N ENG	12,565	17,588	10,895
NY	157,164	199,584	148,974
OH	2,885	7,240	5,580
OR	16,659	24,161	20,332
PA	110,227	245,040	158,217
VA	79,013	94,851	78,500
WA	1,977,739	2,032,128	1,535,856
WV	20,654	59,693	41,306
Other States	41,686	35,670	21,178
US	2,602,812	2,957,587	2,221,182

Survey Procedures: Questionnaires are mailed about the 24th of each month to all operators on the list of approximately 1,400 public and private cold storage warehouses. In addition, apple data are obtained from special surveys and other sources (State Departments of Agriculture, U.S. Apple Association, etc.). All survey data represent stocks as of the end of the month.

Data are collected from warehouses artificially cooled to a temperature of 50 degrees Fahrenheit or lower, and whose food products are normally stored for 30 days or more. All food items in these facilities are reported regardless of the number of days stored at the time of the report. Also included are specialized storage facilities meeting the 30 day requirement, such as fruit houses, dairy manufacturing plants, frozen fruit, fruit juice, and vegetable processors, and poultry and meat packing plants. Excluded are stocks in space maintained by wholesalers, jobbers, distributors, chain stores, locker plants containing individual lockers, meat packer branch houses, and frozen food processors whose entire inventories are turned over more than once a month.

Estimating Procedures: Data for reporting firms are added to estimates for non-reporting firms to obtain regional and National totals. Estimates for non-reporting firms are obtained by multiplying the previous month's figure by a percent change from the previous month. The percent change is calculated for each item from totals of the current and previous month summed from firms that reported both months.

Revision Policy: Data are revised the following month based on late reports or corrected data. Final figures are published in the annual summary in February of the following year.

Reliability: Reports are received from 900 firms each month which represent about 70 percent of the total capacity. Firms that are not on the list or firms who have never reported are not represented in the data. Monthly data can vary due to different firms reporting month to month. Survey data are also subject to non-sampling errors such as omissions and mistakes in reporting and in processing the data. While these errors cannot be measured directly, they are minimized by carefully reviewing all reported data for consistency and reasonableness.

The next "Cold Storage" report will be released at 3 p.m. ET on May 20, 2002.

The United States Department of Agriculture (USDA) prohibits discrimination in all its programs on the basis of race, color, national origin, gender, religion, age, disability, political beliefs, sexual orientation, and marital or family status. (Not all prohibited bases apply to all programs.) Persons with disabilities who require alternative means for communication of program information (braille, large print, audiotape, etc.) should contact the USDA's TARGET Center at 202-720-2600 (voice and TDD).

To file a complaint of discrimination, write USDA, Director, Office of Civil Rights, Room 326-W, Whitten Building, 1400 Independence Avenue, SW, Washington, D.C., 20250-9410, or call 202-720-5964 (voice or TDD). USDA is an equal opportunity provider and employer.

ACCESS TO REPORTS!!

For your convenience, there are several ways to obtain NASS reports, data products, and services:

INTERNET ACCESS

All NASS reports are available free of charge on the worldwide Internet. For access, connect to the Internet and go to the NASS Home Page at: <http://www.usda.gov/nass/>. Select "Today's Reports" or Publications and then Reports by Calendar or Publications and then Search, by Title or Subject.

E-MAIL SUBSCRIPTION

There are two options for subscribing via e-mail. All NASS reports are available by subscription free of charge direct to your e-mail address. 1) Starting with the NASS Home Page at <http://www.usda.gov/nass/>, click on **Publications**, then click on the **Subscribe by E-mail** button which takes you to the page describing e-mail delivery of reports. Finally, click on **Go to the Subscription Page** and follow the instructions. 2) If you do NOT have Internet access, send an e-mail message to: usda-reports@usda.mannlib.cornell.edu. In the body of the message type the word: **list**.

AUTOFAX ACCESS

NASSFax service is available for some reports from your fax machine. Please call 202-720-2000, using the handset attached to your fax. Respond to the voice prompts. Document 0411 is a list of available reports.

PRINTED REPORTS OR DATA PRODUCTS

CALL OUR TOLL-FREE ORDER DESK: 800-999-6779 (U.S. and Canada)
Other areas, please call 703-605-6220 FAX: 703-605-6900
(Visa, MasterCard, check, or money order acceptable for payment.)

ASSISTANCE

For **assistance** with general agricultural statistics or further information about NASS or its products or services, contact the **Agricultural Statistics Hotline** at **800-727-9540**, 7:30 a.m. to 4:00 p.m. ET, or e-mail: nass@nass.usda.gov.
