



Cold Storage

Released October 18, 2002, by the National Agricultural Statistics Service (NASS), Agricultural Statistics Board, U.S. Department of Agriculture. For information on "Cold Storage" call Linda Simpson at (202) 720-8784, office hours 7:00 a.m. to 4:30 p.m. ET.

HIGHLIGHTS

Frozen food stocks in refrigerated warehouses on September 30, 2002, were greater than year earlier levels for pork, beef, poultry, red meat, and vegetables. Cooler stocks of pecans and apples were also above last year.

Butter stocks were 8 percent below August 2002 but 91 percent above a year ago.

Total red meat supplies in freezers were 5 percent above August 31, 2002 and 28 percent above September 2001. Frozen pork stocks were 3 percent above last month and 30 percent above last year. Stocks of pork bellies were 66 percent below last month but 4 percent above September 2001 stocks.

Total frozen poultry supplies on September 30, 2002, were slightly below last month but were 28 percent above last year's level. Total stocks of chicken were up 1 percent from last month and were 33 percent above last year. Total pounds of turkey in freezers decreased 2 percent from last month but were 24 percent above last year.

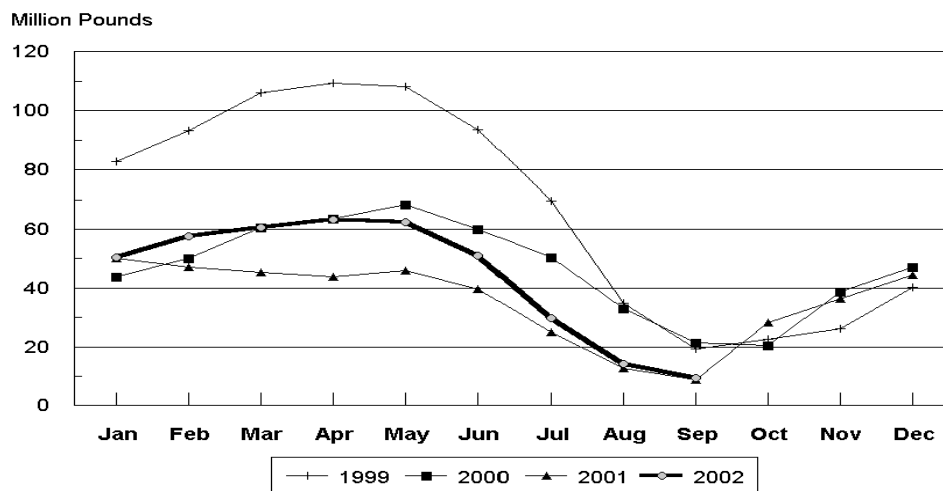
Public cooler occupancy on September 30, 2002, was at 40 percent of capacity, up 5 points from last year. Public freezer occupancy, at 56 percent, was up 2 points from last year.

This page is intentionally blank.

Table of Contents

	Page
Stocks in Cold Storage: By Commodity, United States, September 2002	4
Stocks in Cold Storage: By Commodity, Region, and United States, August 31, 2002	8
Stocks in Cold Storage: By Commodity, Region, and United States, September 30, 2002	12
Public General Warehouses: Cold Storage Space Occupied by Region and United States, September 2002	16
Survey and Estimating Procedures, Revision Policy and Reliability	17

**Pork Bellies
Cold Storage Stocks, 1999-2002
United States**



**Stocks in Cold Storage: By Commodity,
United States, September 2002**

Commodity	Stocks in All Warehouses			Percent of		Public Warehouse Stocks
	Sep 30, 2001	Aug 31, 2002	Sep 30, 2002	Sep 2001	Aug 2002	Sep 30, 2002
	<i>1,000 Pounds</i>	<i>1,000 Pounds</i>	<i>1,000 Pounds</i>	<i>Percent</i>	<i>Percent</i>	<i>1,000 Lbs</i>
Fresh Fruit						
Apples						
Regular Storage	959,272	7,563	926,384	97		
Controlled Atmosphere	1,847,115	82,220	1,897,480	103		
Total	2,806,387	89,783	2,823,864	101		2,297
Pears						
Bartlett	138,669	92,178	87,079	63	94	
Other Varieties	415,005	26,834	312,002	75		
Total	553,674	119,012	399,081	72	335	4,027
Nuts						
Shelled						
Peanuts	338,495	330,681	200,525	59	61	
Pecans	42,021	54,726	53,442	127	98	
Other Shelled	79,549	63,572	69,564	87	109	
Total	460,065	448,979	323,531	70	72	128,708
In-Shell						
Peanuts	5,016	14,589	11,320	226	78	
Pecans	15,815	83,033	53,344	337	64	
Other In-Shell	9,475	4,467	10,115	107	226	
Total	30,306	102,089	74,779	247	73	29,667
Dairy Products						
Butter, Total	110,857	229,469	211,402	191	92	192,205
(Government Owned)	331	2,449	1,873	566	76	
Natural Cheese						
American, Total	487,559	563,844	514,651	106	91	
(Government Owned)	1,229	420	887	72	211	
Swiss	10,439	14,134	16,104	154	114	
Other Natural Cheese	210,732	218,883	231,590	110	106	
Total	708,730	796,861	762,345	108	96	447,179
Eggs, Frozen						
Whites	4,251	2,192	1,719	40	78	
Yolks	777	923	971	125	105	
Whole & Mixed	11,274	6,528	6,968	62	107	
Unclassified	1,401	3,535	3,544	253	100	
Total	17,703	13,178	13,202	75	100	12,706
Frozen Poultry						
Chicken						
Broilers, Fryers						
Roasters (Whole)	22,308	33,700	34,302	154	102	
Hens, Mature Chickens	8,181	6,248	6,237	76	100	
Other	594,377	784,073	791,336	133	101	
Total Chicken	624,866	824,021	831,875	133	101	

See footnote(s) at end of table.

--continued

**Stocks in Cold Storage: By Commodity,
United States, September 2002**

Commodity	Stocks in All Warehouses			Percent of		Public Warehouse Stocks
	Sep 30, 2001	Aug 31, 2002	Sep 30, 2002	Sep 2001	Aug 2002	Sep 30, 2002
	<i>1,000 Pounds</i>	<i>1,000 Pounds</i>	<i>1,000 Pounds</i>	<i>Percent</i>	<i>Percent</i>	<i>1,000 Lbs</i>
Turkeys						
Toms (Whole Carcasses)		180,685	196,711		109	
Hens (Whole Carcasses)		163,528	158,204		97	
Whole Turkeys	346,967	344,213	354,915	102	103	
Other Turkey	195,008	341,408	317,152	163	93	
Total Turkey	541,975	685,621	672,067	124	98	528,496
Ducks	10,133	7,654	7,697	76	101	
Total Poultry	1,176,974	1,517,296	1,511,639	128	100	1,326,571
Frozen Fruit						
Apples	36,202	41,174	31,407	87	76	
Apricots	11,316	9,031	8,523	75	94	
Blackberries, Total	35,051	33,054	31,659	90	96	
IQF	19,545	19,332	17,611	90	91	
Pails and Tubs	4,792	2,156	2,410	50	112	
Barrels, 400 lbs net	8,836	10,952	11,062	125	101	
Concentrate	1,878	614	576	31	94	
Blueberries	134,814	120,995	119,988	89	99	
Boysenberries	3,846	4,915	4,144	108	84	
Cherries, Tart (RTP)	155,033	78,729	72,287	47	92	
Cherries, Tart (Juice)	3,435	3,643	3,031	88	83	
Cherries, Sweet	18,064	12,582	11,311	63	90	
Grapes	4,113	2,366	4,989	121	211	
Peaches	83,669	59,708	90,447	108	151	
Raspberries, Black	4,030	4,119	3,636	90	88	
Raspberries, Red, Total	59,736	80,538	72,250	121	90	
IQF	22,093	27,494	25,917	117	94	
Pails and Tubs	11,942	15,661	13,928	117	89	
Barrels, 400 lbs net	24,441	36,769	31,564	129	86	
Concentrate	1,260	614	841	67	137	
Strawberries, Total	312,681	405,949	369,377	118	91	
IQF and Poly		282,019	256,000		91	
Pails and Tubs		74,213	69,897		94	
Barrels and Drums		26,873	23,250		87	
Juice Stock		22,844	20,230		89	
Other Frozen Fruit	239,926	191,481	182,578	76	95	
Total	1,101,916	1,048,284	1,005,627	91	96	808,065
Frozen Juice						
Orange Juice Conc. ¹	1,537,665	1,680,896	1,533,115	100	91	
(Gallon Equivalent)	155,382	169,856	154,923			
Other Juice Concentrate	290,904	275,106	294,647	101	107	
Total	1,828,569	1,956,002	1,827,762	100	93	213,861

See footnote(s) at end of table.

--continued

**Stocks in Cold Storage: By Commodity,
United States, September 2002**

Commodity	Stocks in All Warehouses			Percent of		Public Warehouse Stocks
	Sep 30, 2001	Aug 31, 2002	Sep 30, 2002	Sep 2001	Aug 2002	Sep 30, 2002
	<i>1,000 Pounds</i>	<i>1,000 Pounds</i>	<i>1,000 Pounds</i>	<i>Percent</i>	<i>Percent</i>	<i>1,000 Lbs</i>
Frozen Vegetables						
Asparagus	12,726	9,996	7,848	62	79	
Limas, Fordhook	16,334	9,921	14,630	90	147	
Limas, Baby	41,627	29,417	43,558	105	148	
Green Beans, Reg. Cut	191,945	195,536	220,430	115	113	
Green Beans, Fr. Style	29,968	25,601	30,384	101	119	
Broccoli, Spears	26,303	50,436	45,344	172	90	
Broccoli, Chopped & Cut	78,521	79,052	74,240	95	94	
Brussels Sprouts	7,945	8,131	7,532	95	93	
Carrots, Diced	43,832	38,824	45,972	105	118	
Carrots, Other	117,917	85,169	94,930	81	111	
Cauliflower	25,404	25,186	26,729	105	106	
Corn, Cut	382,000	289,980	449,571	118	155	
Corn, Cob	288,534	169,375	283,348	98	167	
Mixed Vegetables	50,739	50,415	48,005	95	95	
Okra	53,168	50,548	57,316	108	113	
Onion Rings	8,082	7,270	7,915	98	109	
Onions, Other	26,133	29,217	26,944	103	92	
Blackeye Peas	5,491	5,128	4,606	84	90	
Green Peas	320,198	305,107	284,912	89	93	
Peas & Carrots Mixed	8,816	7,332	8,023	91	109	
Spinach	67,525	91,412	79,390	118	87	
Squash, Summer/Zucchini	43,068	49,233	49,442	115	100	
Southern Greens	26,733	21,563	19,161	72	89	
Other Vegetables	329,012	289,628	317,889	97	110	
Total	2,202,021	1,923,477	2,248,119	102	117	1,762,613
Potatoes						
French Fries	1,071,789	797,929	895,161	84	112	
Other Frozen	251,973	242,662	254,002	101	105	
Total	1,323,762	1,040,591	1,149,163	87	110	816,980

See footnote(s) at end of table.

--continued

**Stocks in Cold Storage: By Commodity,
United States, September 2002 (Continued)**

Commodity	Stocks in All Warehouses			Percent of		Public Warehouse Stocks
	Sep 30, 2001	Aug 31, 2002	Sep 30, 2002	Sep 2001	Aug 2002	Sep 30, 2002
	<i>1,000 Pounds</i>	<i>1,000 Pounds</i>	<i>1,000 Pounds</i>	<i>Percent</i>	<i>Percent</i>	<i>1,000 Lbs</i>
Meat						
Frozen Beef						
Boneless ²	330,521	406,336	442,291	134	109	
Beef Cuts ³	52,245	55,421	52,585	101	95	
Total	382,766	461,757	494,876	129	107	491,375
(Government Owned)	1,891	1,835	1,407	74	77	
Frozen Pork						
Picnics, Bone-in	12,028	11,314	11,629	97	103	
Hams, Total	97,403	140,199	151,201	155	108	145,101
Bone-in	60,007	86,684	96,186	160	111	95,032
Boneless ⁴	37,396	53,515	55,015	147	103	50,069
Bellies	8,960	14,250	9,341	104	66	
Loins, Total	23,373	24,601	23,556	101	96	21,166
Bone-in	9,909	11,308	13,104	132	116	
Boneless ⁵	13,464	13,293	10,452	78	79	
Ribs ⁶	34,411	51,522	54,338	158	105	
Butts	8,520	9,033	9,941	117	110	
Trimming ⁷	37,158	49,459	50,352	136	102	
Other ⁸	63,945	59,749	62,146	97	104	
Variety Meats ⁹	63,591	58,416	55,129	87	94	
Unclassified ¹⁰	17,557	45,834	50,455	287	110	
Total	366,946	464,377	478,088	130	103	438,683
(Government Owned)	1,347	788	913	68	116	
Other						
Veal	4,545	3,720	4,429	97	119	
Lamb & Mutton	13,979	14,458	11,882	85	82	
Total	18,524	18,178	16,311	88	90	16,268
Canned						
Canned Hams	6,226	6,129	4,625	74	75	
Other Canned Meat	801	240	364	45	152	
Total	7,027	6,369	4,989	71	78	4,911
Total	775,263	950,681	994,264	128	105	951,237
Miscellaneous						
Cooler	1,031,979	663,310	972,704	94	147	355,161
Freezer	2,207,200	2,235,699	2,334,256	106	104	2,270,603
Total	3,239,179	2,899,009	3,306,960	102	114	2,625,764
Commodities						
Stored in Coolers	5,607,970	2,239,492	5,371,639	96	240	1,141,672
Stored in Freezers	10,662,886	10,895,219	11,280,099	106	104	8,349,930
Total	16,270,856	13,134,711	16,651,738	102	127	9,491,602

¹ Adjusted to 42.0 degrees Brix equivalent (9.896 pounds per gallon).

² Includes all boxed boneless beef, such as ground beef, roasts, steaks, loins, strips, rounds, trimmings, etc. Variety meats (edible offal), such as tongues, livers, hearts, kidneys, and other organs removed from slaughtered beef, are included as miscellaneous freezer stocks.

³ Includes all boxed primal beef cuts, bone-in.

⁴ Includes full ham, bone removed and individual muscles separated.

⁵ Includes pork tenderloins.

⁶ Includes spareribs and backribs.

⁷ Includes 42% regular trimmings, 72% special trimmings, boneless picnic meat, jowls, neckbone trimmings, blade, cheek, head, and shank meat, etc. Packaged bacon, sausage, and processed items, such as hot dogs and luncheon meats, are included in miscellaneous cooler or freezer stocks.

⁸ Includes ears, tails, feet, neckbones and snouts.

⁹ Includes tongues, kidneys, livers, stomachs, hearts, chitterlings, salivary glands, and other organs removed from slaughtered hogs.

¹⁰ Includes product unable to be classified elsewhere in this report.

**Stocks in Cold Storage: By Commodity, Region,
and United States, August 31, 2002**

Commodity	New England	Middle Atlantic	East North Central	West North Central	South Atlantic
	<i>1,000 Pounds</i>	<i>1,000 Pounds</i>	<i>1,000 Pounds</i>	<i>1,000 Pounds</i>	<i>1,000 Pounds</i>
Total Fresh Apples	29	22,843		67	12
Nuts					
Shelled					
Peanuts		5	23	19	199,804
Pecans ¹		227			16,639
In-Shell					
Pecans ¹					22,708
Dairy Products					
Natural Cheese					
American, Total	20,603	69,202	218,033	142,834	4,411
Other Natural Cheese	443	36,927	109,511	56,069	1,919
Frozen Poultry					
Chicken					
Broilers, Fryers					
Roasters (Whole)	2	1,477	79	1,143	10,858
Hens, Mature Chickens	18	208	375	162	2,421
Other	1,730	21,045	17,719	38,670	243,028
Total Chicken	1,750	22,730	18,173	39,975	256,307
Turkeys					
Whole Turkeys	10,489	29,821	20,623	53,797	68,586
Other Turkey	1,529	24,961	27,634	87,030	132,036
Total Turkey	12,018	54,782	48,257	140,827	200,622
Ducks		355	6,898	78	39
Total Poultry	13,768	77,867	73,328	180,880	456,968
Frozen Fruit					
Apples	21	6,278	27,147	109	453
Blueberries	21,807	7,499	60,432	1,123	4,193
Cherries, Tart (RTP)	1	5,798	58,797	943	215
Cherries, Sweet		191	6,149	423	5
Peaches	30	3,100	5,526	906	299
Raspberries, Red	273	1,134	1,765	153	63
Strawberries, Total	70	4,430	4,511	932	768
Other Frozen Fruit	3,279	12,329	72,381	4,228	5,919

See footnote(s) at end of table.

--continued

**Stocks in Cold Storage: By Commodity, Region,
and United States, August 31, 2002 (continued)**

Commodity	East South Central	West South Central	Mountain	Pacific	US Total
	<i>1,000 Pounds</i>	<i>1,000 Pounds</i>	<i>1,000 Pounds</i>	<i>1,000 Pounds</i>	<i>1,000 Pounds</i>
Total Fresh Apples		71	74	66,687	89,783
Nuts					
Shelled					
Peanuts	30,625	99,089	111	1,005	330,681
Pecans ¹	1,251	35,903		706	54,726
In-Shell					
Pecans ¹	2,085	58,240			83,033
Dairy Products					
Natural Cheese					
American, Total	271	2,244	9,351	96,895	563,844
Other Natural Cheese	178	284	1,226	12,326	218,883
Frozen Poultry					
Chicken					
Broilers, Fryers					
Roasters (Whole)	3,760	12,911	461	3,009	33,700
Hens, Mature Chickens	1,426	258		1,380	6,248
Other	134,482	270,437	2,229	54,733	784,073
Total Chicken	139,668	283,606	2,690	59,122	824,021
Turkeys					
Whole Turkeys	7,850	66,024	21,455	65,568	344,213
Other Turkey	1,578	37,250	11,893	17,497	341,408
Total Turkey	9,428	103,274	33,348	83,065	685,621
Ducks	5	32	82	165	7,654
Total Poultry	149,101	386,912	36,120	142,352	1,517,296
Frozen Fruit					
Apples	88	781	194	6,103	41,174
Blueberries	68	705	277	24,891	120,995
Cherries, Tart (RTP)	23	860	1,681	10,411	78,729
Cherries, Sweet	2	138	659	5,015	12,582
Peaches	86	1,600	63	48,098	59,708
Raspberries, Red	152	431	1	76,566	80,538
Strawberries, Total	1,222	32,374	894	360,748	405,949
Other Frozen Fruit	157	17,351	7,208	68,629	191,481

See footnote(s) at end of table.

--continued

**Stocks in Cold Storage: By Commodity, Region,
and United States, August 31, 2002 (continued)**

Commodity	New England	Middle Atlantic	East North Central	West North Central	South Atlantic
	<i>1,000 Pounds</i>	<i>1,000 Pounds</i>	<i>1,000 Pounds</i>	<i>1,000 Pounds</i>	<i>1,000 Pounds</i>
Frozen Juice					
Orange Juice Conc. ²	73		582	239	1,612,992
Other Juice Concentrate	397	25,047	12,575	2,579	113,836
Frozen Vegetables ³					
Asparagus		879	5,380	76	237
Limas, Fordhook		1,317	916	31	559
Limas, Baby		3,590	3,946	1,094	7,787
Green Beans, Reg. Cut		51,102	39,614	2,192	5,722
Green Beans, Fr. Style		8,028	3,419	972	488
Broccoli, Spears		8,005	4,856	4	1,889
Broccoli, Chopped & Cut		5,287	8,124	7,208	6,280
Brussels Sprouts		1,971	1,417	42	536
Carrots, Diced		6,878	10,349	593	1,043
Carrots, Other		8,697	18,469	668	3,580
Cauliflower		1,888	2,563	277	815
Corn, Cut		31,107	61,199	22,138	5,737
Corn, Cob		13,771	29,967	17,737	3,724
Mixed Vegetables		6,976	10,841	571	1,287
Okra		2,314	621	11,181	11,612
Onion Rings		291	2,817	788	1,758
Onions, Other		2,474	7,538	177	3,335
Blackeye Peas		255	74	37	3,367
Green Peas		49,121	47,936	17,099	11,823
Peas & Carrots Mixed		1,394	1,678	113	703
Spinach		19,315	5,754	570	6,933
Squash, Summer/Zucchini		2,820	11,355	1,072	6,655
Southern Greens		2,570	559	325	7,704
Other Vegetables		37,599	34,907	12,142	24,669
Potatoes					
French Fries	23,586	26,879	58,219	62,151	21,670
Other Frozen	3,390	16,860	34,048	6,245	3,944
Meat					
Frozen Beef					
Boneless ⁴	6,067	41,416	50,543	117,100	29,776
Beef Cuts ⁵	5,859	402	7,921	7,565	3,276
Frozen Pork					
Ribs ⁶	218	1,577	19,737	15,739	7,491
Trimnings ⁷	122	1,310	15,644	19,897	6,309
Other ⁸	1,719	951	12,780	25,318	10,722
Other					
Veal	13	1,197	1,118	219	51
Lamb & Mutton	8	3,238	1,595	3,288	463

See footnote(s) at end of table.

--continued

**Stocks in Cold Storage: By Commodity, Region,
and United States, August 31, 2002 (continued)**

Commodity	East South Central	West South Central	Mountain	Pacific	US Total
	<i>1,000 Pounds</i>	<i>1,000 Pounds</i>	<i>1,000 Pounds</i>	<i>1,000 Pounds</i>	<i>1,000 Pounds</i>
Frozen Juice					
Orange Juice Concentrate	34	6,729	90	60,157	1,680,896
Other Juice Concentrate	227	23,402	420	96,623	275,106
Frozen Vegetables ³					
Asparagus		673	26	2,725	9,996
Limas, Fordhook		554		6,544	9,921
Limas, Baby		1,079	3,658	8,263	29,417
Green Beans, Reg. Cut		1,533	160	95,213	195,536
Green Beans, Fr. Style		239	128	12,327	25,601
Broccoli, Spears		16,920	4	18,758	50,436
Broccoli, Chopped & Cut		24,447	613	27,093	79,052
Brussels Sprouts		630		3,535	8,131
Carrots, Diced		1,414	26	18,521	38,824
Carrots, Other		8,924	563	44,268	85,169
Cauliflower		6,561	117	12,965	25,186
Corn, Cut		1,842	757	167,200	289,980
Corn, Cob		1,241	3,401	99,534	169,375
Mixed Vegetables		8,055	90	22,595	50,415
Okra		23,904		916	50,548
Onion Rings		424	474	718	7,270
Onions, Other		4,286	1,255	10,152	29,217
Blackeye Peas		976		419	5,128
Green Peas		4,155	20,425	154,548	305,107
Peas & Carrots Mixed		993		2,451	7,332
Spinach		12,626	2,288	43,926	91,412
Squash, Summer/Zucchini		7,461	1,016	18,854	49,233
Southern Greens		9,439		966	21,563
Other Vegetables		33,502	7,218	139,591	289,628
Potatoes					
French Fries	1,115	9,052	163,090	432,167	797,929
Other Frozen	198	18,332	45,513	114,132	242,662
Meat					
Frozen Beef					
Boneless ⁴	7,008	85,379	13,882	55,165	406,336
Beef Cuts ⁵	3,694	8,195	11,926	6,583	55,421
Frozen Pork					
Ribs ⁶	1,897	2,565	250	2,048	51,522
Trimblings ⁷	456	5,537	7	177	49,459
Other ⁸	2,833	3,202	166	2,058	59,749
Other					
Veal		158	2	962	3,720
Lamb & Mutton	19	586	68	5,193	14,458

¹ East North Central combined with South Atlantic. Mountain and West North Central combined with West South Central.

² Middle Atlantic combined with South Atlantic.

³ New England combined with Middle Atlantic. East South Central combined with South Atlantic.

⁴ Includes all boxed boneless beef, such as ground beef, roasts, steaks, loins, strips, rounds, trimmings, etc. Variety meats (edible offal), such as tongues, livers, hearts, kidneys, and other organs removed from slaughtered beef, are included as miscellaneous freezer stocks.

⁵ Includes all boxed primal beef cuts, bone-in.

⁶ Includes spareribs and backribs.

⁷ Includes 42% regular trimmings, 72% special trimmings, boneless picnic meat, jowls, neckbone trimmings, blade, cheek, head, and shank meat, etc. Packaged bacon, sausage, and processed items, such as hot dogs and luncheon meats, are included in miscellaneous cooler or freezer stocks.

⁸ Includes ears, tails, feet, neckbones and snouts.

⁹ Includes tongues, kidneys, livers, stomachs, hearts, chitterlings, salivary glands, and other organs removed from slaughtered hogs.

¹⁰ Includes product unable to be classified elsewhere in this report.

**Stocks in Cold Storage: By Commodity, Region,
and United States, September 30, 2002**

Commodity	New England	Middle Atlantic	East North Central	West North Central	South Atlantic
	<i>1,000 Pounds</i>	<i>1,000 Pounds</i>	<i>1,000 Pounds</i>	<i>1,000 Pounds</i>	<i>1,000 Pounds</i>
Total Fresh Apples	12	178,585	19,053	36	1
Nuts					
Shelled					
Peanuts		3	15	13	105,248
Pecans ¹		208			17,149
In-Shell					
Pecans ¹					17,219
Dairy Products					
Natural Cheese					
American, Total	18,792	65,437	205,496	121,088	180
Other Natural Cheese	452	38,569	112,475	64,696	1,993
Frozen Poultry					
Chicken					
Broilers, Fryers					
Roasters (Whole)	2	1,276	84	1,128	10,405
Hens, Mature Chickens	18	168	371	157	2,349
Other	1,595	19,265	16,183	32,451	250,240
Total Chicken	1,615	20,709	16,638	33,736	262,994
Turkeys					
Whole Turkeys	10,361	30,661	23,326	50,280	73,282
Other Turkey	1,531	24,751	22,259	74,356	124,107
Total Turkey	11,892	55,412	45,585	124,636	197,389
Ducks		342	6,949	78	56
Total Poultry	13,507	76,463	69,172	158,450	460,439
Frozen Fruit					
Apples	24	4,720	20,199	90	662
Blueberries	21,773	7,135	58,870	1,104	3,580
Cherries, Tart (RTP)	20	5,561	52,961	935	298
Cherries, Sweet		241	5,319	554	8
Peaches	41	4,219	7,722	880	405
Raspberries, Red	211	1,130	1,563	180	658
Strawberries, Total	60	4,426	4,736	800	2,149
Other Frozen Fruit	3,584	12,466	72,436	5,238	5,274

See footnote(s) at end of table.

--continued

**Stocks in Cold Storage: By Commodity, Region,
and United States, September 30, 2002 (continued)**

Commodity	East South Central	West South Central	Mountain	Pacific	US Total
	<i>1,000 Pounds</i>	<i>1,000 Pounds</i>	<i>1,000 Pounds</i>	<i>1,000 Pounds</i>	<i>1,000 Pounds</i>
Total Fresh Apples		71	181	2,625,925	2,823,864
Nuts					
Shelled					
Peanuts	28,676	65,533	92	945	200,525
Pecans ¹	851	34,609		625	53,442
In-Shell					
Pecans ¹	2,079	34,046			53,344
Dairy Products					
Natural Cheese					
American, Total	441	2,334	8,748	92,135	514,651
Other Natural Cheese	185	346	1,287	11,587	231,590
Frozen Poultry					
Chicken					
Broilers, Fryers					
Roasters (Whole)	6,963	10,564	493	3,387	34,302
Hens, Mature Chickens	1,476	316		1,382	6,237
Other	144,731	269,630	2,542	54,699	791,336
Total Chicken	153,170	280,510	3,035	59,468	831,875
Turkeys					
Whole Turkeys	7,685	66,517	25,669	67,134	354,915
Other Turkey	1,783	39,607	10,630	18,128	317,152
Total Turkey	9,468	106,124	36,299	85,262	672,067
Ducks	5	47	82	138	7,697
Total Poultry	162,643	386,681	39,416	144,868	1,511,639
Frozen Fruit					
Apples	90	753	143	4,726	31,407
Blueberries	157	1,024	252	26,093	119,988
Cherries, Tart (RTP)	23	1,083	1,546	9,860	72,287
Cherries, Sweet	2	130	793	4,264	11,311
Peaches	71	3,009	117	73,983	90,447
Raspberries, Red	99	650	1	67,758	72,250
Strawberries, Total	955	29,619	266	326,366	369,377
Other Frozen Fruit	79	18,005	6,831	58,665	182,578

See footnote(s) at end of table.

--continued

**Stocks in Cold Storage: By Commodity, Region,
and United States, September 30, 2002 (continued)**

Commodity	New England	Middle Atlantic	East North Central	West North Central	South Atlantic
	<i>1,000 Pounds</i>	<i>1,000 Pounds</i>	<i>1,000 Pounds</i>	<i>1,000 Pounds</i>	<i>1,000 Pounds</i>
Frozen Juice					
Orange Juice Conc. ²	68		675	162	1,470,485
Other Juice Concentrate	289	37,454	13,086	2,234	120,546
Frozen Vegetables ³					
Asparagus		922	4,042	50	241
Limas, Fordhook		976	987	34	636
Limas, Baby		4,131	5,303	1,237	8,115
Green Beans, Reg. Cut		56,575	54,642	1,875	6,650
Green Beans, Fr. Style		10,211	6,513	974	564
Broccoli, Spears		6,815	4,169	3	1,826
Broccoli, Chopped & Cut		5,026	7,445	8,483	6,335
Brussels Sprouts		1,846	1,683	31	824
Carrots, Diced		5,896	16,378	517	1,230
Carrots, Other		7,356	18,549	584	4,169
Cauliflower		1,665	2,562	288	707
Corn, Cut		40,054	86,073	38,299	6,571
Corn, Cob		21,149	41,245	28,415	6,423
Mixed Vegetables		6,439	10,965	394	1,538
Okra		2,199	678	13,080	12,092
Onion Rings		243	3,160	1,005	1,714
Onions, Other		2,044	7,584	152	2,909
Blackeye Peas		185	92	36	2,877
Green Peas		43,890	47,108	16,152	10,674
Peas & Carrots Mixed		1,322	1,604	160	705
Spinach		17,029	5,723	561	6,953
Squash, Summer/Zucchini		2,730	12,691	906	6,272
Southern Greens		2,658	658	133	6,381
Other Vegetables		38,270	40,443	15,364	24,829
Potatoes					
French Fries	27,758	28,432	62,957	74,308	25,853
Other Frozen	4,492	15,897	33,368	6,413	4,438
Meat					
Frozen Beef					
Boneless ⁴	7,220	44,053	56,311	129,244	31,034
Beef Cuts ⁵	6,200	508	7,016	6,529	3,200
Frozen Pork					
Ribs ⁶	239	1,735	21,358	17,546	7,189
Trimmings ⁷	113	1,345	16,789	20,573	6,104
Other ⁸	1,788	1,004	12,918	26,541	11,267
Other					
Veal		1,211	957	246	61
Lamb & Mutton	7	2,961	1,318	2,726	383

See footnote(s) at end of table.

--continued

**Stocks in Cold Storage: By Commodity, Region,
and United States, September 30, 2002 (continued)**

Commodity	East South Central	West South Central	Mountain	Pacific	US Total
	<i>1,000 Pounds</i>	<i>1,000 Pounds</i>	<i>1,000 Pounds</i>	<i>1,000 Pounds</i>	<i>1,000 Pounds</i>
Frozen Juice					
Orange Juice Concentrate	32	6,306	93	55,294	1,533,115
Other Juice Concentrate	217	20,520	341	99,960	294,647
Frozen Vegetables ³					
Asparagus		282	25	2,286	7,848
Limas, Fordhook		575		11,422	14,630
Limas, Baby		1,307	4,622	18,843	43,558
Green Beans, Reg. Cut		1,794	186	98,708	220,430
Green Beans, Fr. Style		346	159	11,617	30,384
Broccoli, Spears		15,338	85	17,108	45,344
Broccoli, Chopped & Cut		22,080	535	24,336	74,240
Brussels Sprouts		408	1	2,739	7,532
Carrots, Diced		1,359	24	20,568	45,972
Carrots, Other		7,438	486	56,348	94,930
Cauliflower		5,442	118	15,947	26,729
Corn, Cut		2,753	4,778	271,043	449,571
Corn, Cob		1,709	8,760	175,647	283,348
Mixed Vegetables		7,376	176	21,117	48,005
Okra		28,495		772	57,316
Onion Rings		575	476	742	7,915
Onions, Other		4,289	1,003	8,963	26,944
Blackeye Peas		1,022		394	4,606
Green Peas		4,203	17,930	144,955	284,912
Peas & Carrots Mixed		750		3,482	8,023
Spinach		10,099	1,752	37,273	79,390
Squash, Summer/Zucchini		7,017	890	18,936	49,442
Southern Greens		8,298		1,033	19,161
Other Vegetables		36,057	7,304	155,622	317,889
Potatoes					
French Fries	855	13,454	198,572	462,972	895,161
Other Frozen	237	23,898	49,150	116,109	254,002
Meat					
Frozen Beef					
Boneless ⁴	6,602	100,878	13,722	53,227	442,291
Beef Cuts ⁵	3,434	7,167	10,946	7,585	52,585
Frozen Pork					
Ribs ⁶	1,751	2,726	205	1,589	54,338
Trimming ⁷	227	4,941	7	253	50,352
Other ⁸	2,988	3,189	169	2,282	62,146
Other					
Veal		123	2	1,829	4,429
Lamb & Mutton	8	547	186	3,746	11,882

¹ East North Central combined with South Atlantic. Mountain and West North Central Combined with West South Central.

² Middle Atlantic combined with South Atlantic.

³ New England combined with Middle Atlantic. East South Central combined with South Atlantic.

⁴ Includes all boxed boneless beef, such as ground beef, roasts, steaks, loins, strips, rounds, trimmings, etc. Variety meats (edible offal), such as tongues, livers, hearts, kidneys, and other organs removed from slaughtered beef, are included as miscellaneous freezer stocks.

⁵ Includes all boxed primal beef cuts, bone-in.

⁶ Includes spareribs and backribs.

⁷ Includes 42% regular trimmings, 72% special trimmings, boneless picnic meat, jowls, neckbone trimmings, blade, cheek, head, and shank meat, etc. Packaged bacon, sausage, and processed items, such as hot dogs and luncheon meats, are included in miscellaneous cooler or freezer stocks.

⁸ Includes ears, tails, feet, neckbones and snouts.

⁹ Includes tongues, kidneys, livers, stomachs, hearts, chitterlings, salivary glands, and other organs removed from slaughtered hogs.

¹⁰ Includes product unable to be classified elsewhere in this report.

**Public General Warehouses: Cold Storage Space Occupied
by Region and United States, September 2002**

Region	Cooler				Freezer			
	Usable Space	Usable Space Occupied			Usable Space	Usable Space Occupied		
	Sep 30 2002	Sep 30 2001	Aug 31 2002	Sep 30 2002	Sep 30 2002	Sep 30 2001	Aug 31 2002	Sep 30 2002
	<i>1,000 Cu Ft</i>	<i>Percent</i>	<i>Percent</i>	<i>Percent</i>	<i>1,000 Cu Ft</i>	<i>Percent</i>	<i>Percent</i>	<i>Percent</i>
New England	1,766	53	70	69	15,869	68	63	61
Middle Atlantic	43,957	66	63	62	125,777	72	54	56
E. North Central	55,031	36	44	42	216,193	43	49	47
W. North Central	47,362	29	43	40	158,314	54	50	51
South Atlantic	49,453	27	30	35	207,959	56	57	58
E. South Central	10,058	36	52	49	74,017	41	41	43
W. South Central	29,564	9	17	20	142,080	50	53	54
Mountain	5,818	21	16	14	66,196	59	38	43
Pacific	49,164	39	28	30	314,259	68	66	70
US	292,173	35	39	40	1,320,664	54	54	56

Cold Storage Regions



Survey Procedures: Questionnaires are mailed about the 24th of each month to all operators on the list of approximately 1,400 public and private cold storage warehouses. In addition, apple data are obtained from special surveys and other sources (State Departments of Agriculture, U.S. Apple Association, etc.). All survey data represent stocks as of the end of the month.

Data are collected from warehouses artificially cooled to a temperature of 50 degrees Fahrenheit or lower, and whose food products are normally stored for 30 days or more. All food items in these facilities are reported regardless of the number of days stored at the time of the report. Also included are specialized storage facilities meeting the 30 day requirement, such as fruit houses, dairy manufacturing plants, frozen fruit, fruit juice, and vegetable processors, and poultry and meat packing plants. Excluded are stocks in space maintained by wholesalers, jobbers, distributors, chain stores, locker plants containing individual lockers, meat packer branch houses, and frozen food processors whose entire inventories are turned over more than once a month.

Estimating Procedures: Data for reporting firms are added to estimates for non-reporting firms to obtain regional and National totals. Estimates for non-reporting firms are obtained by multiplying the previous month's figure by a percent change from the previous month. The percent change is calculated for each item from totals of the current and previous month summed from firms that reported both months.

Revision Policy: Data are revised the following month based on late reports or corrected data. Final figures are published in the annual summary in February of the following year.

Reliability: Reports are received from 900 firms each month which represent about 70 percent of the total capacity. Firms that are not on the list or firms who have never reported are not represented in the data. Monthly data can vary due to different firms reporting month to month. Survey data are also subject to non-sampling errors such as omissions and mistakes in reporting and in processing the data. While these errors cannot be measured directly, they are minimized by carefully reviewing all reported data for consistency and reasonableness.

The next "Cold Storage" report will be released at 3 p.m. ET on November 20, 2002.

The United States Department of Agriculture (USDA) prohibits discrimination in all its programs on the basis of race, color, national origin, gender, religion, age, disability, political beliefs, sexual orientation, and marital or family status. (Not all prohibited bases apply to all programs.) Persons with disabilities who require alternative means for communication of program information (braille, large print, audiotape, etc.) should contact the USDA's TARGET Center at 202-720-2600 (voice and TDD).

To file a complaint of discrimination, write USDA, Director, Office of Civil Rights, Room 326-W, Whitten Building, 1400 Independence Avenue, SW, Washington, D.C., 20250-9410, or call 202-720-5964 (voice or TDD). USDA is an equal opportunity provider and employer.

ACCESS TO REPORTS!!

For your convenience, there are several ways to obtain NASS reports, data products, and services:

INTERNET ACCESS

All NASS reports are available free of charge on the worldwide Internet. For access, connect to the Internet and go to the NASS Home Page at: <http://www.usda.gov/nass/>. Select "Today's Reports" or Publications and then Reports Calendar or Publications and then Search, by Title or Subject.

E-MAIL SUBSCRIPTION

All NASS reports are available by subscription free of charge direct to your e-mail address. Starting with the NASS Home Page at <http://www.usda.gov/nass/>, click on **Publications**, then click on the **Subscribe by E-mail** button which takes you to the page describing e-mail delivery of reports. Finally, click on **Go to the Subscription Page** and follow the instructions.

AUTOFAX ACCESS

NASSFax service is available for some reports from your fax machine. Please call 202-720-2000, using the handset attached to your fax. Respond to the voice prompts. Document 0411 is a list of available reports.

PRINTED REPORTS OR DATA PRODUCTS

CALL OUR TOLL-FREE ORDER DESK: 800-999-6779 (U.S. and Canada)
Other areas, please call 703-605-6220 FAX: 703-605-6900
(Visa, MasterCard, check, or money order acceptable for payment.)

ASSISTANCE

For **assistance** with general agricultural statistics or further information about NASS or its products or services, contact the **Agricultural Statistics Hotline** at **800-727-9540**, 7:30 a.m. to 4:00 p.m. ET, or e-mail: nass@nass.usda.gov.

**USDA Data Users' Forum
October 21, 2002
Holiday Inn Mart Plaza
Chicago, Illinois**

The USDA's National Agricultural Statistics Service will hold a public forum for open exchange between Federal agricultural statistics agencies and data users on October 21, 2002. Agency representatives will provide updates on pending changes in the various statistical and information programs and will seek comments from data users. The USDA's Agricultural Marketing Service, Economic Research Service, Foreign Agricultural Service, and World Agricultural Outlook Board, as well as the U.S. Census Bureau's Foreign Trade Division, will also participate in the forum.

For registration details or additional information about the Data Users' Forum, see the NASS homepage at www.usda.gov/nass/ or contact Karlyn McCutcheon of NASS at (202) 690-8141 or at karlyn_mccutcheon@nass.usda.gov.

This Data Users' Forum precedes an Industry Outlook Meeting that will be held at the same location on October 22, 2002. The outlook meeting brings together analysts from various commodity sectors to discuss the outlook situation. For more information about the outlook meeting and to register for it, contact Terry Francl of the American Farm Bureau Federation at (847) 685-8769 or at terry@fb.org.

