



Cold Storage

Released November 20, 2002, by the National Agricultural Statistics Service (NASS), Agricultural Statistics Board, U.S. Department of Agriculture. For information on "Cold Storage" call Linda Simpson at (202) 720-8784, office hours 7:00 a.m. to 4:30 p.m. ET.

HIGHLIGHTS

Frozen food stocks in refrigerated warehouses on October 31, 2002, were greater than year earlier levels for poultry, red meat, orange juice concentrate, and vegetables. Cooler stocks of pecans were also above last year.

Butter stocks were 21 percent below September 2002 but 63 percent above a year ago.

Total red meat supplies in freezers were 4 percent above September 30, 2002 and 23 percent above October 2001. Frozen pork stocks were 2 percent above last month and 14 percent above last year. Stocks of pork bellies were 10 percent above last month but 63 percent below October 2001 stocks.

Total frozen poultry supplies on October 31, 2002, were down 1 percent from last month but were 31 percent above last year's level. Total stocks of chicken were up 2 percent from last month and were 35 percent above last year. Total pounds of turkey in freezers decreased 6 percent from last month but were 31 percent above last year.

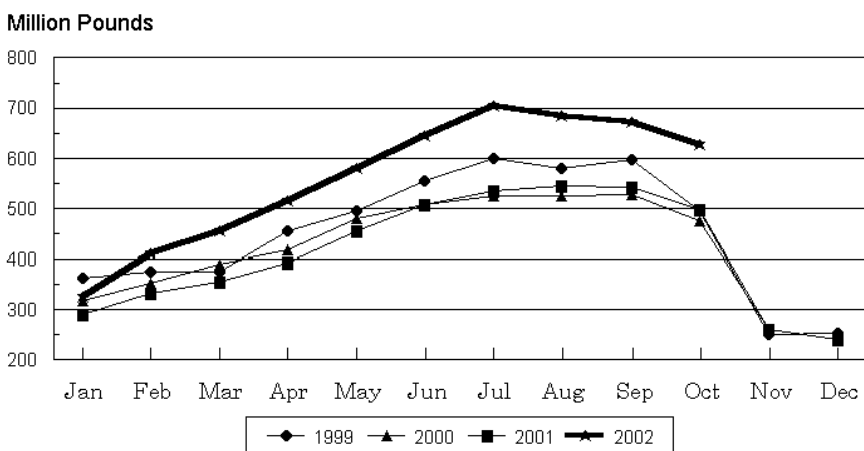
Public cooler occupancy on October 31, 2002, was at 42 percent of capacity, up 6 points from last year. Public freezer occupancy, at 59 percent, was up 2 points from last year.

This page is intentionally blank.

Table of Contents

	Page
Stocks in Cold Storage: By Commodity, United States, October 2002	4
Stocks in Cold Storage: By Commodity, Region, and United States, September 30, 2002	8
Stocks in Cold Storage: By Commodity, Region, and United States, October 31, 2002	12
Public General Warehouses: Cold Storage Space Occupied by Region and United States, October 2002	16
Apples in Cold Storage: By State and United States, October 31, 2001 and 2002.	17
Survey and Estimating Procedures, Revision Policy and Reliability	18

Total Frozen Turkeys
Cold Storage Stocks, 1999-2002
United States



**Stocks in Cold Storage: By Commodity,
United States, October 2002**

Commodity	Stocks in All Warehouses			Percent of		Public Warehouse Stocks
	Oct 31, 2001	Sep 30, 2002	Oct 31, 2002	Oct 2001	Sep 2002	Oct 31, 2002
	<i>1,000 Pounds</i>	<i>1,000 Pounds</i>	<i>1,000 Pounds</i>	<i>Percent</i>	<i>Percent</i>	<i>1,000 Lbs</i>
Fresh Fruit						
Apples						
Regular Storage	1,781,866	926,419	1,561,027	88	169	
Controlled Atmosphere	3,782,496	1,897,480	3,668,610	97	193	
Total	5,564,362	2,823,899	5,229,637	94	185	4,635
Pears						
Bartlett	73,688	98,546	50,964	69	52	
Other Varieties	443,436	348,174	429,184	97	123	
Total	517,124	446,720	480,148	93	107	83
Nuts						
Shelled						
Peanuts	386,056	214,618	261,190	68	122	
Pecans	34,294	53,461	40,906	119	77	
Other Shelled	86,095	69,564	106,284	123	153	
Total	506,445	337,643	408,380	81	121	158,635
In-Shell						
Peanuts	9,604	9,873	14,482	151	147	
Pecans	18,212	52,844	33,745	185	64	
Other In-Shell	19,601	10,419	13,937	71	134	
Total	47,417	73,136	62,164	131	85	33,382
Dairy Products						
Butter, Total	100,791	209,110	164,640	163	79	147,073
(Government Owned)	344	1,873	1,879	546	100	
Natural Cheese						
American, Total	463,378	516,791	505,489	109	98	
(Government Owned)	911	887	927	102	105	
Swiss	10,671	17,068	18,990	178	111	
Other Natural Cheese	198,185	226,539	204,199	103	90	
Total	672,234	760,398	728,678	108	96	413,304
Eggs, Frozen						
Whites	3,024	1,719	1,862	62	108	
Yolks	744	890	656	88	74	
Whole & Mixed	10,298	7,037	6,844	66	97	
Unclassified	1,453	3,577	3,649	251	102	
Total	15,519	13,223	13,011	84	98	12,330
Frozen Poultry						
Chicken						
Broilers, Fryers						
Roasters (Whole)	21,578	34,370	33,103	153	96	
Hens, Mature Chickens	5,972	6,293	6,088	102	97	
Other	607,108	794,757	816,195	134	103	
Total Chicken	634,658	835,420	855,386	135	102	

See footnote(s) at end of table.

--continued

**Stocks in Cold Storage: By Commodity,
United States, October 2002**

Commodity	Stocks in All Warehouses			Percent of		Public Warehouse Stocks
	Oct 31, 2001	Sep 30, 2002	Oct 31, 2002	Oct 2001	Sep 2002	Oct 31, 2002
	<i>1,000 Pounds</i>	<i>1,000 Pounds</i>	<i>1,000 Pounds</i>	<i>Percent</i>	<i>Percent</i>	<i>1,000 Lbs</i>
Turkeys						
Toms (Whole Carcasses)		194,989	182,497		94	
Hens (Whole Carcasses)		159,667	132,155		83	
Whole Turkeys	296,425	354,656	314,652	106	89	
Other Turkey	201,500	317,799	314,294	156	99	
Total Turkey	497,925	672,455	628,946	126	94	496,576
Ducks	9,242	7,692	8,883	96	115	
Total Poultry	1,141,825	1,515,567	1,493,215	131	99	1,317,882
Frozen Fruit						
Apples	38,421	31,486	32,309	84	103	
Apricots	9,661	8,536	5,596	58	66	
Blackberries, Total	31,113	32,694	27,886	90	85	
IQF	17,654	18,436	16,641	94	90	
Pails and Tubs	4,289	2,580	2,206	51	86	
Barrels, 400 lbs net	7,714	11,102	8,267	107	74	
Concentrate	1,456	576	772	53	134	
Blueberries	120,955	119,616	110,928	92	93	
Boysenberries	3,566	4,128	3,414	96	83	
Cherries, Tart (RTP)	144,013	75,064	66,788	46	89	
Cherries, Tart (Juice)	2,711	2,983	2,424	89	81	
Cherries, Sweet	16,332	11,614	9,888	61	85	
Grapes	5,916	4,989	7,915	134	159	
Peaches	77,452	91,212	89,133	115	98	
Raspberries, Black	3,347	3,644	2,824	84	77	
Raspberries, Red, Total	54,457	71,341	62,062	114	87	
IQF	21,513	25,311	22,998	107	91	
Pails and Tubs	10,887	13,991	12,487	115	89	
Barrels, 400 lbs net	20,833	31,196	25,900	124	83	
Concentrate	1,224	843	677	55	80	
Strawberries, Total	299,598	369,617	326,297	109	88	
IQF and Poly		256,233	224,401		88	
Pails and Tubs		69,913	61,981		89	
Barrels and Drums		23,241	21,633		93	
Juice Stock		20,230	18,282		90	
Other Frozen Fruit	392,232	182,614	413,589	105	226	
Total	1,199,774	1,009,538	1,161,053	97	115	969,507
Frozen Juice						
Orange Juice Conc. ¹	1,398,873	1,543,617	1,433,527	102	93	
(Gallon Equivalent)	141,357	155,984	144,859			
Other Juice Concentrate	319,307	294,374	301,172	94	102	
Total	1,718,180	1,837,991	1,734,699	101	94	206,032

See footnote(s) at end of table.

--continued

**Stocks in Cold Storage: By Commodity,
United States, October 2002**

Commodity	Stocks in All Warehouses			Percent of		Public Warehouse Stocks
	Oct 31, 2001	Sep 30, 2002	Oct 31, 2002	Oct 2001	Sep 2002	Oct 31, 2002
	<i>1,000 Pounds</i>	<i>1,000 Pounds</i>	<i>1,000 Pounds</i>	<i>Percent</i>	<i>Percent</i>	<i>1,000 Lbs</i>
Frozen Vegetables						
Asparagus	13,065	7,864	7,158	55	91	
Limas, Fordhook	16,393	14,619	15,117	92	103	
Limas, Baby	57,570	45,375	53,681	93	118	
Green Beans, Reg. Cut	188,387	219,330	204,046	108	93	
Green Beans, Fr. Style	27,755	30,420	28,272	102	93	
Broccoli, Spears	25,612	45,415	45,121	176	99	
Broccoli, Chopped & Cut	77,645	74,308	70,156	90	94	
Brussels Sprouts	11,997	7,505	12,719	106	169	
Carrots, Diced	64,065	44,427	81,342	127	183	
Carrots, Other	170,102	95,037	130,415	77	137	
Cauliflower	33,423	26,808	34,586	103	129	
Corn, Cut	409,944	452,059	462,394	113	102	
Corn, Cob	289,305	279,312	307,876	106	110	
Mixed Vegetables	50,852	47,890	44,890	88	94	
Okra	51,866	56,797	54,303	105	96	
Onion Rings	7,298	7,914	9,422	129	119	
Onions, Other	27,726	28,227	29,949	108	106	
Blackeye Peas	5,595	4,611	6,860	123	149	
Green Peas	276,547	282,829	254,331	92	90	
Peas & Carrots Mixed	9,502	7,956	8,512	90	107	
Spinach	67,221	79,626	69,897	104	88	
Squash, Summer/Zucchini	45,878	49,049	50,337	110	103	
Southern Greens	29,143	19,268	21,289	73	110	
Other Vegetables	362,264	318,462	339,049	94	106	
Total	2,319,155	2,245,108	2,341,722	101	104	1,844,663
Potatoes						
French Fries	1,105,469	888,591	987,434	89	111	
Other Frozen	233,072	252,613	258,859	111	102	
Total	1,338,541	1,141,204	1,246,293	93	109	889,487

See footnote(s) at end of table.

--continued

**Stocks in Cold Storage: By Commodity,
United States, October 2002 (Continued)**

Commodity	Stocks in All Warehouses			Percent of		Public Warehouse Stocks
	Oct 31, 2001	Sep 30, 2002	Oct 31, 2002	Oct 2001	Sep 2002	Oct 31, 2002
	<i>1,000 Pounds</i>	<i>1,000 Pounds</i>	<i>1,000 Pounds</i>	<i>Percent</i>	<i>Percent</i>	<i>1,000 Lbs</i>
Meat						
Frozen Beef						
Boneless ²	342,586	438,648	462,891	135	106	
Beef Cuts ³	52,532	55,302	61,552	117	111	
Total	395,118	493,950	524,443	133	106	521,085
(Government Owned)	2,425	1,489	1,636	67	110	
Frozen Pork						
Picnics, Bone-in	15,304	11,958	16,948	111	142	
Hams, Total	101,481	155,629	147,019	145	94	141,437
Bone-in	60,439	99,406	91,063	151	92	89,802
Boneless ⁴	41,042	56,223	55,956	136	100	51,635
Bellies	28,216	9,452	10,353	37	110	
Loins, Total	26,228	25,988	29,137	111	112	26,631
Bone-in	10,517	13,185	13,674	130	104	
Boneless ⁵	15,711	12,803	15,463	98	121	
Ribs ⁶	50,313	52,362	57,239	114	109	
Butts	12,409	11,211	9,501	77	85	
Trimming ⁷	38,474	45,136	49,605	129	110	
Other ⁸	68,425	63,273	74,100	108	117	
Variety Meats ⁹	66,737	54,991	40,192	60	73	
Unclassified ¹⁰	22,977	50,227	57,863	252	115	
Total	430,564	480,227	491,957	114	102	446,112
(Government Owned)	1,631	914	1,241	76	136	
Other						
Veal	5,344	4,376	5,280	99	121	
Lamb & Mutton	13,238	11,961	11,706	88	98	
Total	18,582	16,337	16,986	91	104	16,847
Canned						
Canned Hams	4,343	6,045	6,528	150	108	
Other Canned Meat	411	332	170	41	51	
Total	4,754	6,377	6,698	141	105	6,519
Total	849,018	996,891	1,040,084	123	104	990,563
Miscellaneous						
Cooler	1,158,135	973,213	1,170,593	101	120	352,758
Freezer	2,261,469	2,335,939	2,394,854	106	103	2,319,939
Total	3,419,604	3,309,152	3,565,447	104	108	2,672,697
Commodities						
Stored in Coolers	8,478,292	5,431,749	8,098,736	96	149	1,149,914
Stored in Freezers	10,883,190	11,287,831	11,570,435	106	103	8,690,957
Total	19,361,482	16,719,580	19,669,171	102	118	9,840,871

¹ Adjusted to 42.0 degrees Brix equivalent (9.896 pounds per gallon).

² Includes all boxed boneless beef, such as ground beef, roasts, steaks, loins, strips, rounds, trimmings, etc. Variety meats (edible offal), such as tongues, livers, hearts, kidneys, and other organs removed from slaughtered beef, are included as miscellaneous freezer stocks.

³ Includes all boxed primal beef cuts, bone-in.

⁴ Includes full ham, bone removed and individual muscles separated.

⁵ Includes pork tenderloins.

⁶ Includes spareribs and backribs.

⁷ Includes 42% regular trimmings, 72% special trimmings, boneless picnic meat, jowls, neckbone trimmings, blade, cheek, head, and shank meat, etc. Packaged bacon, sausage, and processed items, such as hot dogs and luncheon meats, are included in miscellaneous cooler or freezer stocks.

⁸ Includes ears, tails, feet, neckbones and snouts.

⁹ Includes tongues, kidneys, livers, stomachs, hearts, chitterlings, salivary glands, and other organs removed from slaughtered hogs.

¹⁰ Includes product unable to be classified elsewhere in this report.

**Stocks in Cold Storage: By Commodity, Region,
and United States, September 30, 2002**

Commodity	New England	Middle Atlantic	East North Central	West North Central	South Atlantic
	<i>1,000 Pounds</i>	<i>1,000 Pounds</i>	<i>1,000 Pounds</i>	<i>1,000 Pounds</i>	<i>1,000 Pounds</i>
Total Fresh Apples	12	178,585	19,053	36	1
Nuts					
Shelled					
Peanuts		3	215	13	119,014
Pecans ¹		208			17,143
In-Shell					
Pecans ¹					17,219
Dairy Products					
Natural Cheese					
American, Total	18,792	65,436	210,907	117,381	180
Other Natural Cheese	452	35,557	110,966	64,640	1,444
Frozen Poultry					
Chicken					
Broilers, Fryers					
Roasters (Whole)	2	1,276	102	1,127	10,405
Hens, Mature Chickens	18	168	371	213	2,349
Other	1,595	19,243	16,068	32,459	248,962
Total Chicken	1,615	20,687	16,541	33,799	261,716
Turkeys					
Whole Turkeys	10,361	30,659	23,612	50,278	72,704
Other Turkey	1,531	24,767	22,517	74,355	124,476
Total Turkey	11,892	55,426	46,129	124,633	197,180
Ducks		342	6,944	78	56
Total Poultry	13,507	76,455	69,614	158,510	458,952
Frozen Fruit					
Apples	24	4,720	20,296	89	655
Blueberries	21,773	7,135	58,578	1,105	3,580
Cherries, Tart (RTP)	20	5,561	53,418	936	285
Cherries, Sweet		241	5,317	554	8
Peaches	41	4,219	7,719	880	404
Raspberries, Red	211	1,130	1,565	180	669
Strawberries, Total	60	4,428	4,558	800	2,340
Other Frozen Fruit	3,584	12,466	71,714	5,238	5,973

See footnote(s) at end of table.

--continued

**Stocks in Cold Storage: By Commodity, Region,
and United States, September 30, 2002 (continued)**

Commodity	East South Central	West South Central	Mountain	Pacific	US Total
	<i>1,000 Pounds</i>	<i>1,000 Pounds</i>	<i>1,000 Pounds</i>	<i>1,000 Pounds</i>	<i>1,000 Pounds</i>
Total Fresh Apples		71	216	2,625,925	2,823,899
Nuts					
Shelled					
Peanuts	28,803	65,533	92	945	214,618
Pecans ¹	851	34,635		624	53,461
In-Shell					
Pecans ¹	2,079	33,546			52,844
Dairy Products					
Natural Cheese					
American, Total	441	2,334	7,490	93,830	516,791
Other Natural Cheese	185	346	588	12,361	226,539
Frozen Poultry					
Chicken					
Broilers, Fryers					
Roasters (Whole)	6,963	10,564	510	3,421	34,370
Hens, Mature Chickens	1,476	316		1,382	6,293
Other	148,080	269,630	2,649	56,071	794,757
Total Chicken	156,519	280,510	3,159	60,874	835,420
Turkeys					
Whole Turkeys	7,685	66,473	25,669	67,215	354,656
Other Turkey	1,783	39,607	10,668	18,095	317,799
Total Turkey	9,468	106,080	36,337	85,310	672,455
Ducks	5	47	82	138	7,692
Total Poultry	165,992	386,637	39,578	146,322	1,515,567
Frozen Fruit					
Apples	90	753	113	4,746	31,486
Blueberries	157	1,024	291	25,973	119,616
Cherries, Tart (RTP)	23	1,083	3,984	9,754	75,064
Cherries, Sweet	2	130	1,099	4,263	11,614
Peaches	71	3,009	137	74,732	91,212
Raspberries, Red	99	650	2	66,835	71,341
Strawberries, Total	955	29,619	296	326,561	369,617
Other Frozen Fruit	79	18,005	6,829	58,726	182,614

See footnote(s) at end of table.

--continued

**Stocks in Cold Storage: By Commodity, Region,
and United States, September 30, 2002 (continued)**

Commodity	New England	Middle Atlantic	East North Central	West North Central	South Atlantic
	<i>1,000 Pounds</i>	<i>1,000 Pounds</i>	<i>1,000 Pounds</i>	<i>1,000 Pounds</i>	<i>1,000 Pounds</i>
Frozen Juice					
Orange Juice Conc. ²	68		2,312	160	1,479,352
Other Juice Concentrate	289	37,454	11,707	2,234	121,652
Frozen Vegetables ³					
Asparagus		921	4,046	49	255
Limas, Fordhook		976	987	34	625
Limas, Baby		4,126	5,294	1,236	8,056
Green Beans, Reg. Cut		56,575	54,604	1,874	5,323
Green Beans, Fr. Style		10,211	6,518	973	596
Broccoli, Spears		6,805	4,108	4	1,967
Broccoli, Chopped & Cut		5,033	7,350	8,480	6,494
Brussels Sprouts		1,846	1,677	31	803
Carrots, Diced		5,895	16,423	517	1,215
Carrots, Other		7,359	18,555	584	4,246
Cauliflower		1,666	2,646	287	702
Corn, Cut		40,052	88,285	38,298	6,046
Corn, Cob		21,149	43,996	28,413	6,441
Mixed Vegetables		6,438	10,852	393	1,525
Okra		2,199	666	13,080	11,585
Onion Rings		243	3,159	1,005	1,714
Onions, Other		2,044	7,521	152	3,081
Blackeye Peas		185	92	36	2,882
Green Peas		43,898	46,501	16,153	10,174
Peas & Carrots Mixed		1,322	1,577	159	714
Spinach		17,040	5,779	561	7,122
Squash, Summer/Zucchini		2,728	12,682	906	5,890
Southern Greens		2,658	658	133	6,488
Other Vegetables		38,268	41,258	15,303	24,666
Potatoes					
French Fries	27,758	28,308	61,495	74,281	24,597
Other Frozen	4,492	15,897	32,887	6,409	3,486
Meat					
Frozen Beef					
Boneless ⁴	7,220	44,053	55,020	126,516	31,034
Beef Cuts ⁵	6,200	508	9,587	6,470	3,200
Frozen Pork					
Ribs ⁶	239	1,735	19,374	17,590	7,189
Trimmings ⁷	113	1,345	11,756	20,358	6,104
Other ⁸	1,788	1,004	13,114	27,471	11,268
Other					
Veal		1,211	924	226	61
Lamb & Mutton	7	2,961	1,397	2,726	383

See footnote(s) at end of table.

--continued

**Stocks in Cold Storage: By Commodity, Region,
and United States, September 30, 2002 (continued)**

Commodity	East South Central	West South Central	Mountain	Pacific	US Total
	<i>1,000 Pounds</i>	<i>1,000 Pounds</i>	<i>1,000 Pounds</i>	<i>1,000 Pounds</i>	<i>1,000 Pounds</i>
Frozen Juice					
Orange Juice Concentrate	32	6,306	93	55,294	1,543,617
Other Juice Concentrate	217	20,520	341	99,960	294,374
Frozen Vegetables ³					
Asparagus		282	25	2,286	7,864
Limas, Fordhook		575		11,422	14,619
Limas, Baby		1,307	4,622	20,734	45,375
Green Beans, Reg. Cut		1,794	186	98,974	219,330
Green Beans, Fr. Style		346	159	11,617	30,420
Broccoli, Spears		15,338	85	17,108	45,415
Broccoli, Chopped & Cut		22,080	535	24,336	74,308
Brussels Sprouts		408	1	2,739	7,505
Carrots, Diced		1,359	24	18,994	44,427
Carrots, Other		7,438	487	56,368	95,037
Cauliflower		5,442	118	15,947	26,808
Corn, Cut		2,753	4,780	271,845	452,059
Corn, Cob		1,709	8,761	168,843	279,312
Mixed Vegetables		7,376	176	21,130	47,890
Okra		28,495		772	56,797
Onion Rings		575	476	742	7,914
Onions, Other		4,289	1,003	10,137	28,227
Blackeye Peas		1,022		394	4,611
Green Peas		4,203	17,930	143,970	282,829
Peas & Carrots Mixed		750	1	3,433	7,956
Spinach		10,099	1,752	37,273	79,626
Squash, Summer/Zucchini		7,017	890	18,936	49,049
Southern Greens		8,298		1,033	19,268
Other Vegetables		36,057	7,304	155,606	318,462
Potatoes					
French Fries	855	13,454	198,619	459,224	888,591
Other Frozen	237	23,898	49,208	116,099	252,613
Meat					
Frozen Beef					
Boneless ⁴	6,602	100,878	13,580	53,745	438,648
Beef Cuts ⁵	3,434	7,167	11,151	7,585	55,302
Frozen Pork					
Ribs ⁶	1,751	2,726	202	1,556	52,362
Trimnings ⁷	227	4,941	10	282	45,136
Other ⁸	2,988	3,189	169	2,282	63,273
Other					
Veal		123	2	1,829	4,376
Lamb & Mutton	8	547	186	3,746	11,961

¹ East North Central combined with South Atlantic. Mountain and West North Central combined with West South Central.

² Middle Atlantic combined with South Atlantic.

³ New England combined with Middle Atlantic. East South Central combined with South Atlantic.

⁴ Includes all boxed boneless beef, such as ground beef, roasts, steaks, loins, strips, rounds, trimmings, etc. Variety meats (edible offal), such as tongues, livers, hearts, kidneys, and other organs removed from slaughtered beef, are included as miscellaneous freezer stocks.

⁵ Includes all boxed primal beef cuts, bone-in.

⁶ Includes spareribs and backribs.

⁷ Includes 42% regular trimmings, 72% special trimmings, boneless picnic meat, jowls, neckbone trimmings, blade, cheek, head, and shank meat, etc. Packaged bacon, sausage, and processed items, such as hot dogs and luncheon meats, are included in miscellaneous cooler or freezer stocks.

⁸ Includes ears, tails, feet, neckbones and snouts.

⁹ Includes tongues, kidneys, livers, stomachs, hearts, chitterlings, salivary glands, and other organs removed from slaughtered hogs.

¹⁰ Includes product unable to be classified elsewhere in this report.

**Stocks in Cold Storage: By Commodity, Region,
and United States, October 31, 2002**

Commodity	New England	Middle Atlantic	East North Central	West North Central	South Atlantic
	<i>1,000 Pounds</i>	<i>1,000 Pounds</i>	<i>1,000 Pounds</i>	<i>1,000 Pounds</i>	<i>1,000 Pounds</i>
Total Fresh Apples	47,876	437,178	250,478	7,071	268,333
Nuts					
Shelled					
Peanuts		4	217	15	156,350
Pecans ¹		160			13,259
In-Shell					
Pecans ¹					9,783
Dairy Products					
Natural Cheese					
American, Total	18,868	64,575	205,296	113,455	182
Other Natural Cheese	330	30,717	101,304	58,553	905
Frozen Poultry					
Chicken					
Broilers, Fryers					
Roasters (Whole)	1	1,191	134	1,152	9,959
Hens, Mature Chickens	16	164	323	256	2,245
Other	1,798	20,148	16,450	31,822	246,394
Total Chicken	1,815	21,503	16,907	33,230	258,598
Turkeys					
Whole Turkeys	9,719	28,902	22,169	43,776	61,711
Other Turkey	1,423	22,799	23,277	70,515	126,042
Total Turkey	11,142	51,701	45,446	114,291	187,753
Ducks		385	8,189	1	63
Total Poultry	12,957	73,589	70,542	147,522	446,414
Frozen Fruit					
Apples	14	6,153	19,250	135	618
Blueberries	19,793	6,558	54,979	2,215	2,937
Cherries, Tart (RTP)	15	6,462	45,679	931	281
Cherries, Sweet		378	4,413	616	74
Peaches	41	3,260	7,603	2,004	535
Raspberries, Red	179	1,030	1,574	176	138
Strawberries, Total	73	4,480	4,945	743	940
Other Frozen Fruit	11,499	17,693	248,437	4,242	6,662

See footnote(s) at end of table.

--continued

**Stocks in Cold Storage: By Commodity, Region,
and United States, October 31, 2002 (continued)**

Commodity	East South Central	West South Central	Mountain	Pacific	US Total
	<i>1,000 Pounds</i>	<i>1,000 Pounds</i>	<i>1,000 Pounds</i>	<i>1,000 Pounds</i>	<i>1,000 Pounds</i>
Total Fresh Apples	43	4,572	56,317	4,157,769	5,229,637
Nuts					
Shelled					
Peanuts	31,671	71,856	105	972	261,190
Pecans ¹	455	26,642		390	40,906
In-Shell					
Pecans ¹	343	23,619			33,745
Dairy Products					
Natural Cheese					
American, Total	576	1,949	8,985	91,603	505,489
Other Natural Cheese	251	330	683	11,126	204,199
Frozen Poultry					
Chicken					
Broilers, Fryers					
Roasters (Whole)	6,940	10,123	456	3,147	33,103
Hens, Mature Chickens	1,362	301		1,421	6,088
Other	154,460	284,636	2,697	57,790	816,195
Total Chicken	162,762	295,060	3,153	62,358	855,386
Turkeys					
Whole Turkeys	7,137	52,320	26,329	62,589	314,652
Other Turkey	1,425	38,843	10,044	19,926	314,294
Total Turkey	8,562	91,163	36,373	82,515	628,946
Ducks	5	57	64	119	8,883
Total Poultry	171,329	386,280	39,590	144,992	1,493,215
Frozen Fruit					
Apples	89	938	119	4,993	32,309
Blueberries	195	955	282	23,014	110,928
Cherries, Tart (RTP)	28	1,459	3,461	8,472	66,788
Cherries, Sweet	2	128	1,050	3,227	9,888
Peaches	118	3,635	91	71,846	89,133
Raspberries, Red	120	501	2	58,342	62,062
Strawberries, Total	1,070	26,009	347	287,690	326,297
Other Frozen Fruit	146	19,397	7,408	98,105	413,589

See footnote(s) at end of table.

--continued

**Stocks in Cold Storage: By Commodity, Region,
and United States, October 31, 2002 (continued)**

Commodity	New England	Middle Atlantic	East North Central	West North Central	South Atlantic
	<i>1,000 Pounds</i>	<i>1,000 Pounds</i>	<i>1,000 Pounds</i>	<i>1,000 Pounds</i>	<i>1,000 Pounds</i>
Frozen Juice					
Orange Juice Conc. ²	243		2,928	128	1,372,417
Other Juice Concentrate	402	51,298	11,252	2,072	117,822
Frozen Vegetables ³					
Asparagus		795	3,262	18	282
Limas, Fordhook		1,338	1,086	32	620
Limas, Baby		6,596	4,644	1,188	12,416
Green Beans, Reg. Cut		51,902	50,036	1,614	4,395
Green Beans, Fr. Style		9,340	5,930	921	548
Broccoli, Spears		6,389	3,800	10	1,918
Broccoli, Chopped & Cut		4,580	7,345	8,433	6,251
Brussels Sprouts		2,013	2,117	35	1,002
Carrots, Diced		8,231	28,863	670	1,063
Carrots, Other		12,181	24,679	581	4,883
Cauliflower		2,094	3,492	340	802
Corn, Cut		40,751	74,162	36,131	5,938
Corn, Cob		20,577	44,137	27,642	6,999
Mixed Vegetables		5,693	10,227	259	1,548
Okra		2,185	626	12,819	11,120
Onion Rings		301	4,155	1,091	1,920
Onions, Other		2,308	6,716	161	3,410
Blackeye Peas		185	109	34	2,724
Green Peas		42,681	41,373	14,894	6,921
Peas & Carrots Mixed		1,288	1,616	158	736
Spinach		14,768	5,146	452	6,303
Squash, Summer/Zucchini		5,023	12,286	855	5,514
Southern Greens		3,037	752	125	7,236
Other Vegetables		40,504	42,838	16,846	25,587
Potatoes					
French Fries	35,798	29,598	67,171	86,112	27,394
Other Frozen	4,319	15,528	34,133	6,596	3,467
Meat					
Frozen Beef					
Boneless ⁴	8,759	46,210	59,005	141,286	33,390
Beef Cuts ⁵	6,080	745	10,664	8,624	3,516
Frozen Pork					
Ribs ⁶	272	1,915	17,860	23,214	7,444
Trimnings ⁷	121	1,423	15,006	24,489	2,594
Other ⁸	1,989	1,002	13,467	31,342	16,496
Other					
Veal	8	1,725	942	239	96
Lamb & Mutton	6	2,755	1,682	2,141	451

See footnote(s) at end of table.

--continued

**Stocks in Cold Storage: By Commodity, Region,
and United States, October 31, 2002 (continued)**

Commodity	East South Central	West South Central	Mountain	Pacific	US Total
	<i>1,000 Pounds</i>	<i>1,000 Pounds</i>	<i>1,000 Pounds</i>	<i>1,000 Pounds</i>	<i>1,000 Pounds</i>
Frozen Juice					
Orange Juice Concentrate	32	5,923	67	51,789	1,433,527
Other Juice Concentrate	264	19,884	373	97,805	301,172
Frozen Vegetables ³					
Asparagus		593		2,208	7,158
Limas, Fordhook		565	1	11,475	15,117
Limas, Baby		1,317	5,316	22,204	53,681
Green Beans, Reg. Cut		1,798	112	94,189	204,046
Green Beans, Fr. Style		323	188	11,022	28,272
Broccoli, Spears		16,000	83	16,921	45,121
Broccoli, Chopped & Cut		19,888	551	23,108	70,156
Brussels Sprouts		418	1	7,133	12,719
Carrots, Diced		1,746	93	40,676	81,342
Carrots, Other		8,720	603	78,768	130,415
Cauliflower		6,496	94	21,268	34,586
Corn, Cut		2,725	4,776	297,911	462,394
Corn, Cob		1,948	8,761	197,812	307,876
Mixed Vegetables		6,965	62	20,136	44,890
Okra		26,876		677	54,303
Onion Rings		693	595	667	9,422
Onions, Other		3,972	1,139	12,243	29,949
Blackeye Peas		3,453		355	6,860
Green Peas		3,993	16,214	128,255	254,331
Peas & Carrots Mixed		771	3	3,940	8,512
Spinach		9,701	1,152	32,375	69,897
Squash, Summer/Zucchini		6,809	857	18,993	50,337
Southern Greens		8,848		1,291	21,289
Other Vegetables		37,111	6,830	169,333	339,049
Potatoes					
French Fries	1,366	14,712	249,538	475,745	987,434
Other Frozen	267	26,018	54,309	114,222	258,859
Meat					
Frozen Beef					
Boneless ⁴	4,401	100,497	11,511	57,832	462,891
Beef Cuts ⁵	3,709	7,699	12,284	8,231	61,552
Frozen Pork					
Ribs ⁶	1,529	2,989	338	1,678	57,239
Trimmings ⁷	281	5,290	11	390	49,605
Other ⁸	3,560	3,662	172	2,410	74,100
Other					
Veal		225	25	2,020	5,280
Lamb & Mutton	8	445	95	4,123	11,706

¹ East North Central combined with South Atlantic. Mountain and West North Central Combined with West South Central.

² Middle Atlantic combined with South Atlantic.

³ New England combined with Middle Atlantic. East South Central combined with South Atlantic.

⁴ Includes all boxed boneless beef, such as ground beef, roasts, steaks, loins, strips, rounds, trimmings, etc. Variety meats (edible offal), such as tongues, livers, hearts, kidneys, and other organs removed from slaughtered beef, are included as miscellaneous freezer stocks.

⁵ Includes all boxed primal beef cuts, bone-in.

⁶ Includes spareribs and backribs.

⁷ Includes 42% regular trimmings, 72% special trimmings, boneless picnic meat, jowls, neckbone trimmings, blade, cheek, head, and shank meat, etc. Packaged bacon, sausage, and processed items, such as hot dogs and luncheon meats, are included in miscellaneous cooler or freezer stocks.

⁸ Includes ears, tails, feet, neckbones and snouts.

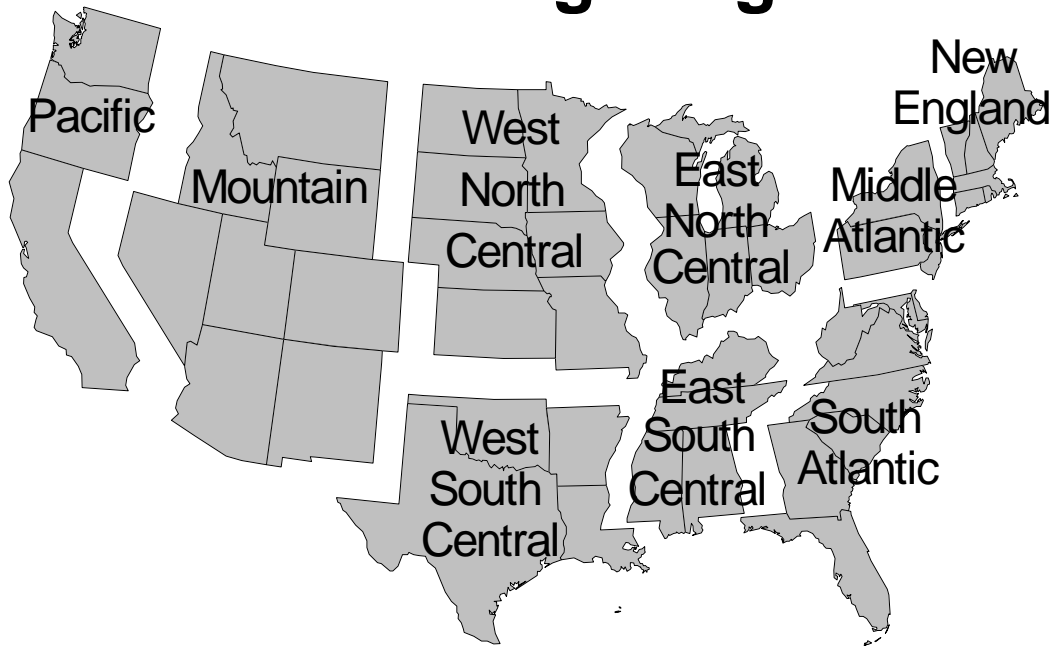
⁹ Includes tongues, kidneys, livers, stomachs, hearts, chitterlings, salivary glands, and other organs removed from slaughtered hogs.

¹⁰ Includes product unable to be classified elsewhere in this report.

**Public General Warehouses: Cold Storage Space Occupied
by Region and United States, October 2002**

Region	Cooler				Freezer			
	Usable Space	Usable Space Occupied			Usable Space	Usable Space Occupied		
	Oct 31 2002	Oct 31 2001	Sep 30 2002	Oct 31 2002	Oct 31 2002	Oct 31 2001	Sep 30 2002	Oct 31 2002
	<i>1,000 Cu Ft</i>	<i>Percent</i>	<i>Percent</i>	<i>Percent</i>	<i>1,000 Cu Ft</i>	<i>Percent</i>	<i>Percent</i>	<i>Percent</i>
New England	1,766	54	70	73	15,869	55	61	65
Middle Atlantic	43,957	66	64	67	125,777	68	57	57
E. North Central	54,353	38	45	48	214,410	49	55	60
W. North Central	47,362	28	42	40	158,314	54	53	58
South Atlantic	49,449	31	29	31	207,968	58	57	51
E. South Central	10,057	45	49	49	74,017	41	45	45
W. South Central	29,565	11	17	13	142,080	51	55	55
Mountain	5,817	21	14	17	66,189	57	45	55
Pacific	49,565	36	35	39	316,595	69	69	70
US	291,891	36	40	42	1,321,219	57	58	59

Cold Storage Regions



**Apples in Cold Storage: By State
and United States, October 2002**

State	All Warehouses	
	Oct 31, 2001	Oct 31, 2002
	<i>1,000 Pounds</i>	<i>1,000 Pounds</i>
CA	135,687	104,828
MI	484,244	219,238
N ENG	57,616	47,876
NY	309,834	214,536
OH	25,165	18,310
OR	63,138	52,941
PA	342,831	222,436
VA	181,942	148,457
WA	3,700,000	4,000,000
WV	98,618	81,436
Other States	165,287	119,579
US	5,564,362	5,229,637

Survey Procedures: Questionnaires are mailed about the 24th of each month to all operators on the list of approximately 1,400 public and private cold storage warehouses. In addition, apple data are obtained from special surveys and other sources (State Departments of Agriculture, U.S. Apple Association, etc.). All survey data represent stocks as of the end of the month.

Data are collected from warehouses artificially cooled to a temperature of 50 degrees Fahrenheit or lower, and whose food products are normally stored for 30 days or more. All food items in these facilities are reported regardless of the number of days stored at the time of the report. Also included are specialized storage facilities meeting the 30 day requirement, such as fruit houses, dairy manufacturing plants, frozen fruit, fruit juice, and vegetable processors, and poultry and meat packing plants. Excluded are stocks in space maintained by wholesalers, jobbers, distributors, chain stores, locker plants containing individual lockers, meat packer branch houses, and frozen food processors whose entire inventories are turned over more than once a month.

Estimating Procedures: Data for reporting firms are added to estimates for non-reporting firms to obtain regional and National totals. Estimates for non-reporting firms are obtained by multiplying the previous month's figure by a percent change from the previous month. The percent change is calculated for each item from totals of the current and previous month summed from firms that reported both months.

Revision Policy: Data are revised the following month based on late reports or corrected data. Final figures are published in the annual summary in February of the following year.

Reliability: Reports are received from 900 firms each month which represent about 70 percent of the total capacity. Firms that are not on the list or firms who have never reported are not represented in the data. Monthly data can vary due to different firms reporting month to month. Survey data are also subject to non-sampling errors such as omissions and mistakes in reporting and in processing the data. While these errors cannot be measured directly, they are minimized by carefully reviewing all reported data for consistency and reasonableness.

The next "Cold Storage" report will be released at 3 p.m. ET on December 20, 2002.

The United States Department of Agriculture (USDA) prohibits discrimination in all its programs on the basis of race, color, national origin, gender, religion, age, disability, political beliefs, sexual orientation, and marital or family status. (Not all prohibited bases apply to all programs.) Persons with disabilities who require alternative means for communication of program information (braille, large print, audiotape, etc.) should contact the USDA's TARGET Center at 202-720-2600 (voice and TDD).

To file a complaint of discrimination, write USDA, Director, Office of Civil Rights, Room 326-W, Whitten Building, 1400 Independence Avenue, SW, Washington, D.C., 20250-9410, or call 202-720-5964 (voice or TDD). USDA is an equal opportunity provider and employer.

ACCESS TO REPORTS!!

For your convenience, there are several ways to obtain NASS reports, data products, and services:

INTERNET ACCESS

All NASS reports are available free of charge on the worldwide Internet. For access, connect to the Internet and go to the NASS Home Page at: <http://www.usda.gov/nass/>. Select "Today's Reports" or Publications and then Reports Calendar or Publications and then Search, by Title or Subject.

E-MAIL SUBSCRIPTION

All NASS reports are available by subscription free of charge direct to your e-mail address. Starting with the NASS Home Page at <http://www.usda.gov/nass/>, click on **Publications**, then click on the **Subscribe by E-mail** button which takes you to the page describing e-mail delivery of reports. Finally, click on **Go to the Subscription Page** and follow the instructions.

AUTOFAX ACCESS

NASSFax service is available for some reports from your fax machine. Please call 202-720-2000, using the handset attached to your fax. Respond to the voice prompts. Document 0411 is a list of available reports.

PRINTED REPORTS OR DATA PRODUCTS

CALL OUR TOLL-FREE ORDER DESK: 800-999-6779 (U.S. and Canada)
Other areas, please call 703-605-6220 FAX: 703-605-6900
(Visa, MasterCard, check, or money order acceptable for payment.)

ASSISTANCE

For **assistance** with general agricultural statistics or further information about NASS or its products or services, contact the **Agricultural Statistics Hotline** at **800-727-9540**, 7:30 a.m. to 4:00 p.m. ET, or e-mail: nass@nass.usda.gov.
