



Cold Storage

Released December 20, 2002, by the National Agricultural Statistics Service (NASS), Agricultural Statistics Board, U.S. Department of Agriculture. For information on "Cold Storage" call Linda Simpson at (202) 720-8784, office hours 7:00 a.m. to 4:30 p.m. ET.

HIGHLIGHTS

Frozen food stocks in refrigerated warehouses on November 30, 2002, were greater than year earlier levels for poultry, red meat, and orange juice concentrate. Cooler stocks of pecans were also above last year.

Butter stocks were 17 percent below October 2002 but 135 percent above a year ago.

Total red meat supplies in freezers were 4 percent below October 31, 2002 but 14 percent above November 2001. Frozen pork stocks were 5 percent below last month but 8 percent above last year. Stocks of pork bellies were 74 percent above last month but 50 percent below November 2001 stocks.

Total frozen poultry supplies on November 30, 2002, were down 24 percent from last month but were 19 percent above last year's level. Total stocks of chicken were down 8 percent from last month but were 16 percent above last year. Total pounds of turkey in freezers decreased 47 percent from last month but were 27 percent above last year.

Public cooler occupancy on November 30, 2002, was at 41 percent of capacity, up 2 points from last year. Public freezer occupancy, at 55 percent, was unchanged from last year.

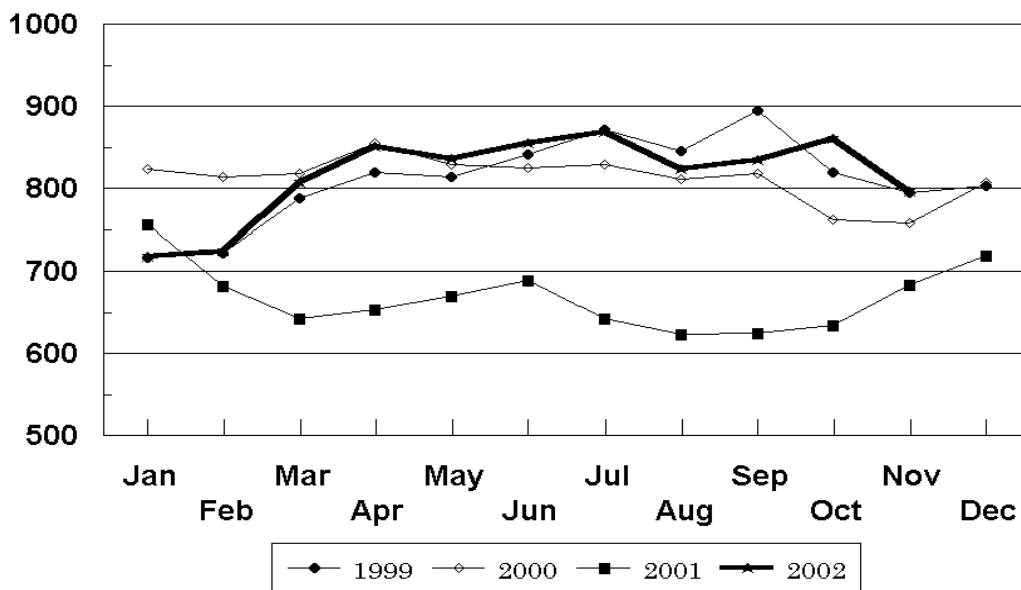
This page is intentionally blank.

Table of Contents

	Page
Stocks in Cold Storage: By Commodity, United States, November 2002	4
Stocks in Cold Storage: By Commodity, Region, and United States, October 31, 2002	8
Stocks in Cold Storage: By Commodity, Region, and United States, November 30, 2002	12
Public General Warehouses: Cold Storage Space Occupied by Region and United States, November 2002	16
Apples in Cold Storage: By State and United States, November 30, 2001 and 2002	17
Survey and Estimating Procedures, Revision Policy and Reliability	18

**Total Frozen Chickens
Cold Storage Stocks, 1999-2002
United States**

Million Pounds



**Stocks in Cold Storage: By Commodity,
United States, November 2002**

Commodity	Stocks in All Warehouses			Percent of		Public Warehouse Stocks
	Nov 30, 2001	Oct 31, 2002	Nov 30, 2002	Nov 2001	Oct 2002	Nov 30, 2002
	<i>1,000 Pounds</i>	<i>1,000 Pounds</i>	<i>1,000 Pounds</i>	<i>Percent</i>	<i>Percent</i>	<i>1,000 Lbs</i>
Fresh Fruit						
Apples						
Regular Storage	1,141,115	1,400,871	1,006,505	88	72	
Controlled Atmosphere	3,834,202	3,847,680	3,932,628	103	102	
Total	4,975,317	5,248,551	4,939,133	99	94	4,939
Pears						
Bartlett	28,749	61,084	25,500	89	42	
Other Varieties	383,482	433,730	359,021	94	83	
Total	412,231	494,814	384,521	93	78	172
Nuts						
Shelled						
Peanuts	421,106	261,649	260,688	62	100	
Pecans	29,336	40,670	35,121	120	86	
Other Shelled	104,924	106,313	91,905	88	86	
Total	555,366	408,632	387,714	70	95	144,432
In-Shell						
Peanuts	24,347	14,046	13,589	56	97	
Pecans	32,886	33,745	42,369	129	126	
Other In-Shell	18,136	13,833	10,320	57	75	
Total	75,369	61,624	66,278	88	108	30,841
Dairy Products						
Butter, Total	57,916	164,640	136,267	235	83	124,475
(Government Owned)	341	1,844	1,021	299	55	
Natural Cheese						
American, Total	438,140	501,401	474,450	108	95	
(Government Owned)	207	927	463	224	50	
Swiss	11,335	18,927	22,672	200	120	
Other Natural Cheese	181,818	200,064	200,852	110	100	
Total	631,293	720,392	697,974	111	97	394,928
Eggs, Frozen						
Whites	1,815	1,835	1,736	96	95	
Yolks	580	628	514	89	82	
Whole & Mixed	10,132	6,973	5,913	58	85	
Unclassified	1,332	3,649	3,041	228	83	
Total	13,859	13,085	11,204	81	86	11,001
Frozen Poultry						
Chicken						
Broilers, Fryers						
Roasters (Whole)	22,294	33,168	30,790	138	93	
Hens, Mature Chickens	5,205	6,067	5,651	109	93	
Other	656,518	822,049	759,635	116	92	
Total Chicken	684,017	861,284	796,076	116	92	

See footnote(s) at end of table.

--continued

**Stocks in Cold Storage: By Commodity,
United States, November 2002**

Commodity	Stocks in All Warehouses			Percent of		Public Warehouse Stocks
	Nov 30, 2001	Oct 31, 2002	Nov 30, 2002	Nov 2001	Oct 2002	Nov 30, 2002
	<i>1,000 Pounds</i>	<i>1,000 Pounds</i>	<i>1,000 Pounds</i>	<i>Percent</i>	<i>Percent</i>	<i>1,000 Lbs</i>
Turkeys						
Toms (Whole Carcasses)		179,724	44,398		25	
Hens (Whole Carcasses)		131,549	46,940		36	
Whole Turkeys	97,488	311,273	91,338	94	29	
Other Turkey	162,541	313,667	239,401	147	76	
Total Turkey	260,029	624,940	330,739	127	53	239,756
Ducks	8,351	8,875	7,586	91	85	
Total Poultry	952,397	1,495,099	1,134,401	119	76	1,001,847
Frozen Fruit						
Apples	41,455	32,321	37,843	91	117	
Apricots	8,686	5,632	5,312	61	94	
Blackberries, Total	27,216	27,885	26,164	96	94	
IQF	15,336	16,638	15,728	103	95	
Pails and Tubs	3,736	2,205	1,906	51	86	
Barrels, 400 lbs net	6,955	8,270	8,045	116	97	
Concentrate	1,189	772	485	41	63	
Blueberries	111,814	111,364	100,492	90	90	
Boysenberries	3,409	3,568	3,360	99	94	
Cherries, Tart (RTP)	129,620	66,942	59,721	46	89	
Cherries, Tart (Juice)	3,356	2,424	2,174	65	90	
Cherries, Sweet	13,918	9,888	8,018	58	81	
Grapes	5,463	7,915	7,609	139	96	
Peaches	70,764	89,133	82,845	117	93	
Raspberries, Black	3,015	2,824	2,668	88	94	
Raspberries, Red, Total	49,898	62,278	56,441	113	91	
IQF	19,193	22,878	19,998	104	87	
Pails and Tubs	10,489	12,538	12,016	115	96	
Barrels, 400 lbs net	18,606	26,185	23,792	128	91	
Concentrate	1,610	677	635	39	94	
Strawberries, Total	266,872	324,391	292,893	110	90	
IQF and Poly		221,757	197,278		89	
Pails and Tubs		62,358	58,478		94	
Barrels and Drums		22,039	21,350		97	
Juice Stock		18,237	15,787		87	
Other Frozen Fruit	420,083	433,794	424,662	101	98	
Total	1,155,569	1,180,359	1,110,202	96	94	928,289
Frozen Juice						
Orange Juice Conc. ¹	1,406,673	1,409,629	1,478,954	105	105	
(Gallon Equivalent)	142,146	142,444	149,450			
Other Juice Concentrate	319,736	299,538	272,200	85	91	
Total	1,726,409	1,709,167	1,751,154	101	102	203,691

See footnote(s) at end of table.

--continued

**Stocks in Cold Storage: By Commodity,
United States, November 2002**

Commodity	Stocks in All Warehouses			Percent of		Public Warehouse Stocks
	Nov 30, 2001	Oct 31, 2002	Nov 30, 2002	Nov 2001	Oct 2002	Nov 30, 2002
	<i>1,000 Pounds</i>	<i>1,000 Pounds</i>	<i>1,000 Pounds</i>	<i>Percent</i>	<i>Percent</i>	<i>1,000 Lbs</i>
Frozen Vegetables						
Asparagus	12,238	7,122	7,189	59	101	
Limas, Fordhook	15,334	15,064	14,681	96	97	
Limas, Baby	53,737	52,905	48,499	90	92	
Green Beans, Reg. Cut	163,900	204,734	187,216	114	91	
Green Beans, Fr. Style	23,835	28,673	24,144	101	84	
Broccoli, Spears	27,689	45,034	46,416	168	103	
Broccoli, Chopped & Cut	77,976	70,017	69,731	89	100	
Brussels Sprouts	15,771	11,879	17,935	114	151	
Carrots, Diced	89,910	71,081	99,582	111	140	
Carrots, Other	197,187	132,087	144,836	73	110	
Cauliflower	34,946	33,600	39,524	113	118	
Corn, Cut	379,256	462,317	425,709	112	92	
Corn, Cob	269,562	301,921	291,594	108	97	
Mixed Vegetables	48,872	46,276	40,877	84	88	
Okra	43,600	54,395	51,190	117	94	
Onion Rings	8,571	9,420	9,241	108	98	
Onions, Other	28,987	30,376	30,562	105	101	
Blackeye Peas	4,958	7,663	8,208	166	107	
Green Peas	241,553	253,753	205,704	85	81	
Peas & Carrots Mixed	8,322	8,762	8,365	101	95	
Spinach	66,631	70,050	63,057	95	90	
Squash, Summer/Zucchini	45,388	50,243	46,835	103	93	
Southern Greens	31,641	21,187	26,275	83	124	
Other Vegetables	364,365	341,089	332,216	91	97	
Total	2,254,229	2,329,648	2,239,586	99	96	1,755,298
Potatoes						
French Fries	1,067,240	994,421	957,118	90	96	
Other Frozen	230,137	257,736	257,431	112	100	
Total	1,297,377	1,252,157	1,214,549	94	97	883,597

See footnote(s) at end of table.

--continued

**Stocks in Cold Storage: By Commodity,
United States, November 2002 (Continued)**

Commodity	Stocks in All Warehouses			Percent of		Public Warehouse Stocks
	Nov 30, 2001	Oct 31, 2002	Nov 30, 2002	Nov 2001	Oct 2002	Nov 30, 2002
	<i>1,000 Pounds</i>	<i>1,000 Pounds</i>	<i>1,000 Pounds</i>	<i>Percent</i>	<i>Percent</i>	<i>1,000 Lbs</i>
Meat						
Frozen Beef						
Boneless ²	371,177	463,814	455,909	123	98	
Beef Cuts ³	56,373	61,353	59,078	105	96	
Total	427,550	525,167	514,987	120	98	512,041
(Government Owned)	2,389	1,636	1,622	68	99	
Frozen Pork						
Picnics, Bone-in	13,675	16,777	11,282	83	67	
Hams, Total	65,982	147,827	88,490	134	60	85,233
Bone-in	32,252	91,935	45,721	142	50	45,165
Boneless ⁴	33,730	55,892	42,769	127	77	40,068
Bellies	36,297	10,354	18,021	50	174	
Loins, Total	37,464	29,241	35,909	96	123	32,649
Bone-in	19,232	13,715	17,537	91	128	
Boneless ⁵	18,232	15,526	18,372	101	118	
Ribs ⁶	63,689	57,985	78,086	123	135	
Butts	16,017	9,858	14,304	89	145	
Trimming ⁷	45,578	49,447	50,748	111	103	
Other ⁸	77,317	73,826	75,954	98	103	
Variety Meats ⁹	53,776	41,040	42,851	80	104	
Unclassified ¹⁰	22,937	53,447	49,705	217	93	
Total	432,732	489,802	465,350	108	95	416,538
(Government Owned)	1,553	1,240	1,107	71	89	
Other						
Veal	5,733	5,217	7,625	133	146	
Lamb & Mutton	11,336	12,004	9,724	86	81	
Total	17,069	17,221	17,349	102	101	17,217
Canned						
Canned Hams	3,517	6,507	4,054	115	62	
Other Canned Meat	80	170	362	453	213	
Total	3,597	6,677	4,416	123	66	4,344
Total	880,948	1,038,867	1,002,102	114	96	950,140
Miscellaneous						
Cooler	1,003,933	1,159,423	940,334	94	81	320,853
Freezer	2,201,283	2,404,208	2,200,505	100	92	2,134,828
Total	3,205,216	3,563,631	3,140,839	98	88	2,455,681
Commodities						
Stored in Coolers	7,665,018	8,112,122	7,430,041	97	92	1,055,950
Stored in Freezers	10,512,459	11,568,544	10,785,883	103	93	7,988,822
Total	18,177,477	19,680,666	18,215,924	100	93	9,044,772

¹ Adjusted to 42.0 degrees Brix equivalent (9.896 pounds per gallon).

² Includes all boxed boneless beef, such as ground beef, roasts, steaks, loins, strips, rounds, trimmings, etc. Variety meats (edible offal), such as tongues, livers, hearts, kidneys, and other organs removed from slaughtered beef, are included as miscellaneous freezer stocks.

³ Includes all boxed primal beef cuts, bone-in.

⁴ Includes full ham, bone removed and individual muscles separated.

⁵ Includes pork tenderloins.

⁶ Includes spareribs and backribs.

⁷ Includes 42% regular trimmings, 72% special trimmings, boneless picnic meat, jowls, neckbone trimmings, blade, cheek, head, and shank meat, etc. Packaged bacon, sausage, and processed items, such as hot dogs and luncheon meats, are included in miscellaneous cooler or freezer stocks.

⁸ Includes ears, tails, feet, neckbones and snouts.

⁹ Includes tongues, kidneys, livers, stomachs, hearts, chitterlings, salivary glands, and other organs removed from slaughtered hogs.

¹⁰ Includes product unable to be classified elsewhere in this report.

**Stocks in Cold Storage: By Commodity, Region,
and United States, October 31, 2002**

Commodity	New England	Middle Atlantic	East North Central	West North Central	South Atlantic
	<i>1,000 Pounds</i>	<i>1,000 Pounds</i>	<i>1,000 Pounds</i>	<i>1,000 Pounds</i>	<i>1,000 Pounds</i>
Total Fresh Apples	47,891	437,178	268,302	7,094	268,333
Nuts					
Shelled					
Peanuts		4	217	15	156,870
Pecans ¹		160			13,259
In-Shell					
Pecans ¹					9,783
Dairy Products					
Natural Cheese					
American, Total	18,868	64,575	201,582	114,266	182
Other Natural Cheese	330	29,375	99,820	57,979	906
Frozen Poultry					
Chicken					
Broilers, Fryers					
Roasters (Whole)	1	1,191	134	1,152	10,006
Hens, Mature Chickens	16	164	302	256	2,245
Other	1,798	20,148	16,571	31,822	254,096
Total Chicken	1,815	21,503	17,007	33,230	266,347
Turkeys					
Whole Turkeys	9,719	28,902	22,076	43,776	62,424
Other Turkey	1,423	22,799	23,297	70,515	126,016
Total Turkey	11,142	51,701	45,373	114,291	188,440
Ducks		385	8,177	1	63
Total Poultry	12,957	73,589	70,557	147,522	454,850
Frozen Fruit					
Apples	14	6,153	19,250	135	618
Blueberries	19,793	6,558	54,973	2,215	2,937
Cherries, Tart (RTP)	15	6,462	45,814	931	281
Cherries, Sweet		378	4,409	616	74
Peaches	41	3,260	7,607	2,004	533
Raspberries, Red	179	1,030	1,604	176	138
Strawberries, Total	73	4,480	4,978	743	940
Other Frozen Fruit	11,499	17,693	244,389	4,242	6,662

See footnote(s) at end of table.

--continued

**Stocks in Cold Storage: By Commodity, Region,
and United States, October 31, 2002 (continued)**

Commodity	East South Central	West South Central	Mountain	Pacific	US Total
	<i>1,000 Pounds</i>	<i>1,000 Pounds</i>	<i>1,000 Pounds</i>	<i>1,000 Pounds</i>	<i>1,000 Pounds</i>
Total Fresh Apples	43	4,572	56,317	4,158,821	5,248,551
Nuts					
Shelled					
Peanuts	31,671	71,856	105	911	261,649
Pecans ¹	455	26,404		392	40,670
In-Shell					
Pecans ¹	343	23,619			33,745
Dairy Products					
Natural Cheese					
American, Total	576	1,938	8,295	91,119	501,401
Other Natural Cheese	251	331	791	10,281	200,064
Frozen Poultry					
Chicken					
Broilers, Fryers					
Roasters (Whole)	6,940	10,123	456	3,165	33,168
Hens, Mature Chickens	1,362	301		1,421	6,067
Other	154,460	282,670	2,697	57,787	822,049
Total Chicken	162,762	293,094	3,153	62,373	861,284
Turkeys					
Whole Turkeys	7,137	50,245	26,329	60,665	311,273
Other Turkey	1,425	38,921	10,044	19,227	313,667
Total Turkey	8,562	89,166	36,373	79,892	624,940
Ducks	5	57	64	123	8,875
Total Poultry	171,329	382,317	39,590	142,388	1,495,099
Frozen Fruit					
Apples	89	938	119	5,005	32,321
Blueberries	195	948	282	23,463	111,364
Cherries, Tart (RTP)	28	1,459	3,461	8,491	66,942
Cherries, Sweet	2	127	1,050	3,232	9,888
Peaches	118	3,634	91	71,845	89,133
Raspberries, Red	120	491	2	58,538	62,278
Strawberries, Total	1,070	26,008	347	285,752	324,391
Other Frozen Fruit	146	18,184	7,408	123,571	433,794

See footnote(s) at end of table.

--continued

**Stocks in Cold Storage: By Commodity, Region,
and United States, October 31, 2002 (continued)**

Commodity	New England	Middle Atlantic	East North Central	West North Central	South Atlantic
	<i>1,000 Pounds</i>	<i>1,000 Pounds</i>	<i>1,000 Pounds</i>	<i>1,000 Pounds</i>	<i>1,000 Pounds</i>
Frozen Juice					
Orange Juice Conc. ²	243		2,928	128	1,348,479
Other Juice Concentrate	402	51,298	13,931	2,072	113,540
Frozen Vegetables ³					
Asparagus		795	3,259	18	282
Limas, Fordhook		1,338	1,036	32	618
Limas, Baby		6,596	4,380	1,188	13,819
Green Beans, Reg. Cut		51,902	48,825	1,614	4,395
Green Beans, Fr. Style		9,340	6,126	921	540
Broccoli, Spears		6,389	3,793	10	1,918
Broccoli, Chopped & Cut		4,580	7,341	8,433	6,251
Brussels Sprouts		2,013	1,284	35	1,002
Carrots, Diced		8,231	22,267	670	1,063
Carrots, Other		12,181	24,520	581	4,883
Cauliflower		2,094	3,469	340	803
Corn, Cut		40,751	73,180	36,131	5,936
Corn, Cob		20,577	42,034	27,642	6,996
Mixed Vegetables		5,693	10,569	259	1,547
Okra		2,185	626	12,819	11,117
Onion Rings		301	4,155	1,091	1,919
Onions, Other		2,308	6,650	161	3,411
Blackeye Peas		185	109	34	3,512
Green Peas		42,681	41,578	14,894	8,288
Peas & Carrots Mixed		1,288	1,705	158	734
Spinach		14,768	5,197	452	6,296
Squash, Summer/Zucchini		5,023	12,288	855	5,514
Southern Greens		3,037	752	125	7,236
Other Vegetables		40,504	42,523	16,846	27,064
Potatoes					
French Fries	35,798	29,598	67,202	86,112	27,394
Other Frozen	4,319	15,528	34,052	6,596	3,467
Meat					
Frozen Beef					
Boneless ⁴	8,759	46,210	59,535	141,286	33,390
Beef Cuts ⁵	6,080	745	10,428	8,624	3,516
Frozen Pork					
Ribs ⁶	272	1,915	18,861	23,214	7,444
Trimmings ⁷	121	1,423	14,853	24,489	2,594
Other ⁸	1,989	1,002	13,070	31,342	16,496
Other					
Veal	8	1,725	865	239	96
Lamb & Mutton	6	2,755	1,988	2,141	451

See footnote(s) at end of table.

--continued

**Stocks in Cold Storage: By Commodity, Region,
and United States, October 31, 2002 (continued)**

Commodity	East South Central	West South Central	Mountain	Pacific	US Total
	<i>1,000 Pounds</i>	<i>1,000 Pounds</i>	<i>1,000 Pounds</i>	<i>1,000 Pounds</i>	<i>1,000 Pounds</i>
Frozen Juice					
Orange Juice Concentrate	32	5,921	67	51,831	1,409,629
Other Juice Concentrate	264	19,897	373	97,761	299,538
Frozen Vegetables ³					
Asparagus		558		2,210	7,122
Limas, Fordhook		564	1	11,475	15,064
Limas, Baby		1,292	4,387	21,243	52,905
Green Beans, Reg. Cut		1,898	112	95,988	204,734
Green Beans, Fr. Style		443	188	11,115	28,673
Broccoli, Spears		15,922	83	16,919	45,034
Broccoli, Chopped & Cut		19,758	551	23,103	70,017
Brussels Sprouts		405	1	7,139	11,879
Carrots, Diced		1,722	93	37,035	71,081
Carrots, Other		8,104	603	81,215	132,087
Cauliflower		5,970	94	20,830	33,600
Corn, Cut		2,754	4,776	298,789	462,317
Corn, Cob		1,811	8,761	194,100	301,921
Mixed Vegetables		7,285	62	20,861	46,276
Okra		26,977		671	54,395
Onion Rings		692	595	667	9,420
Onions, Other		3,880	1,139	12,827	30,376
Blackeye Peas		3,468		355	7,663
Green Peas		4,142	15,756	126,414	253,753
Peas & Carrots Mixed		811	3	4,063	8,762
Spinach		9,764	1,152	32,421	70,050
Squash, Summer/Zucchini		6,810	857	18,896	50,243
Southern Greens		8,748		1,289	21,187
Other Vegetables		37,013	6,830	170,309	341,089
Potatoes					
French Fries	1,366	14,703	249,538	482,710	994,421
Other Frozen	267	26,012	54,309	113,186	257,736
Meat					
Frozen Beef					
Boneless ⁴	4,401	99,726	11,511	58,996	463,814
Beef Cuts ⁵	3,709	7,737	12,284	8,230	61,353
Frozen Pork					
Ribs ⁶	1,529	2,618	338	1,794	57,985
Trimming ⁷	281	5,290	11	385	49,447
Other ⁸	3,560	3,676	172	2,519	73,826
Other					
Veal		219	25	2,040	5,217
Lamb & Mutton	8	445	95	4,115	12,004

¹ East North Central combined with South Atlantic. Mountain and West North Central combined with West South Central.

² Middle Atlantic combined with South Atlantic.

³ New England combined with Middle Atlantic. East South Central combined with South Atlantic.

⁴ Includes all boxed boneless beef, such as ground beef, roasts, steaks, loins, strips, rounds, trimmings, etc. Variety meats (edible offal), such as tongues, livers, hearts, kidneys, and other organs removed from slaughtered beef, are included as miscellaneous freezer stocks.

⁵ Includes all boxed primal beef cuts, bone-in.

⁶ Includes spareribs and backribs.

⁷ Includes 42% regular trimmings, 72% special trimmings, boneless picnic meat, jowls, neckbone trimmings, blade, cheek, head, and shank meat, etc. Packaged bacon, sausage, and processed items, such as hot dogs and luncheon meats, are included in miscellaneous cooler or freezer stocks.

⁸ Includes ears, tails, feet, neckbones and snouts.

⁹ Includes tongues, kidneys, livers, stomachs, hearts, chitterlings, salivary glands, and other organs removed from slaughtered hogs.

¹⁰ Includes product unable to be classified elsewhere in this report.

**Stocks in Cold Storage: By Commodity, Region,
and United States, November 30, 2002**

Commodity	New England	Middle Atlantic	East North Central	West North Central	South Atlantic
	<i>1,000 Pounds</i>	<i>1,000 Pounds</i>	<i>1,000 Pounds</i>	<i>1,000 Pounds</i>	<i>1,000 Pounds</i>
Total Fresh Apples	32,613	430,233	196,948	3,128	249,376
Nuts					
Shelled					
Peanuts		11	323	15	144,525
Pecans ¹		132			12,342
In-Shell					
Pecans ¹					14,016
Dairy Products					
Natural Cheese					
American, Total	17,941	59,428	189,521	108,065	475
Other Natural Cheese	371	28,593	104,912	54,793	899
Frozen Poultry					
Chicken					
Broilers, Fryers					
Roasters (Whole)		1,134	108	1,352	9,062
Hens, Mature Chickens	14	269	297	262	2,062
Other	1,761	20,530	16,491	30,418	241,053
Total Chicken	1,775	21,933	16,896	32,032	252,177
Turkeys					
Whole Turkeys	1,462	2,996	5,515	18,553	22,057
Other Turkey	1,455	10,488	19,417	56,000	103,839
Total Turkey	2,917	13,484	24,932	74,553	125,896
Ducks		354	6,969		46
Total Poultry	4,692	35,771	48,797	106,585	378,119
Frozen Fruit					
Apples	27	9,265	20,755	154	745
Blueberries	18,914	5,963	49,681	1,682	2,503
Cherries, Tart (RTP)	12	5,882	39,524	879	680
Cherries, Sweet		264	3,883	628	52
Peaches	37	3,190	7,379	2,409	508
Raspberries, Red	146	654	1,568	152	129
Strawberries, Total	104	3,855	4,863	698	842
Other Frozen Fruit	14,974	16,482	235,778	2,308	6,439

See footnote(s) at end of table.

--continued

**Stocks in Cold Storage: By Commodity, Region,
and United States, November 30, 2002 (continued)**

Commodity	East South Central	West South Central	Mountain	Pacific	US Total
	<i>1,000 Pounds</i>	<i>1,000 Pounds</i>	<i>1,000 Pounds</i>	<i>1,000 Pounds</i>	<i>1,000 Pounds</i>
Total Fresh Apples		4,958	37,018	3,984,859	4,939,133
Nuts					
Shelled					
Peanuts	26,789	88,003	103	919	260,688
Pecans ¹	431	22,071		145	35,121
In-Shell					
Pecans ¹	926	27,427			42,369
Dairy Products					
Natural Cheese					
American, Total	276	1,657	8,026	89,061	474,450
Other Natural Cheese	253	344	746	9,941	200,852
Frozen Poultry					
Chicken					
Broilers, Fryers					
Roasters (Whole)	4,752	10,937	415	3,030	30,790
Hens, Mature Chickens	1,036	462		1,249	5,651
Other	126,973	269,589	2,521	50,299	759,635
Total Chicken	132,761	280,988	2,936	54,578	796,076
Turkeys					
Whole Turkeys	775	14,411	7,592	17,977	91,338
Other Turkey	1,363	29,773	8,430	8,636	239,401
Total Turkey	2,138	44,184	16,022	26,613	330,739
Ducks		51	51	115	7,586
Total Poultry	134,899	325,223	19,009	81,306	1,134,401
Frozen Fruit					
Apples	143	1,065	125	5,564	37,843
Blueberries	105	771	370	20,503	100,492
Cherries, Tart (RTP)	29	1,441	3,348	7,926	59,721
Cherries, Sweet	1	97	739	2,354	8,018
Peaches	102	3,394	73	65,753	82,845
Raspberries, Red	82	742	2	52,966	56,441
Strawberries, Total	1,074	23,822	332	257,303	292,893
Other Frozen Fruit	95	14,360	5,788	128,438	424,662

See footnote(s) at end of table.

--continued

**Stocks in Cold Storage: By Commodity, Region,
and United States, November 30, 2002 (continued)**

Commodity	New England	Middle Atlantic	East North Central	West North Central	South Atlantic
	<i>1,000 Pounds</i>	<i>1,000 Pounds</i>	<i>1,000 Pounds</i>	<i>1,000 Pounds</i>	<i>1,000 Pounds</i>
Frozen Juice					
Orange Juice Conc. ²	329		841	158	1,417,595
Other Juice Concentrate	413	33,870	13,788	2,402	109,256
Frozen Vegetables ³					
Asparagus		697	2,872	56	426
Limas, Fordhook		1,412	925	26	552
Limas, Baby		6,584	2,430	1,272	12,453
Green Beans, Reg. Cut		44,210	45,684	1,538	5,201
Green Beans, Fr. Style		7,311	6,589	637	441
Broccoli, Spears		4,895	3,168	10	2,053
Broccoli, Chopped & Cut		3,917	6,738	8,343	5,964
Brussels Sprouts		2,258	1,645	23	1,459
Carrots, Diced		11,770	32,826	802	1,219
Carrots, Other		14,775	26,195	608	5,439
Cauliflower		2,158	3,735	393	1,040
Corn, Cut		40,292	64,187	31,068	6,014
Corn, Cob		19,513	37,650	27,060	6,463
Mixed Vegetables		4,278	9,721	466	1,322
Okra		2,029	488	11,438	10,219
Onion Rings		327	4,346	655	2,142
Onions, Other		2,358	5,806	162	3,196
Blackeye Peas		156	85	35	3,797
Green Peas		36,462	32,274	12,757	6,943
Peas & Carrots Mixed		1,141	1,672	151	715
Spinach		14,648	4,699	402	5,705
Squash, Summer/Zucchini		4,852	11,338	653	4,468
Southern Greens		3,329	687	246	10,421
Other Vegetables		38,416	40,044	16,378	25,769
Potatoes					
French Fries	36,236	30,534	67,855	85,804	31,957
Other Frozen	4,059	13,819	35,644	6,724	3,218
Meat					
Frozen Beef					
Boneless ⁴	10,120	46,261	59,157	142,748	30,021
Beef Cuts ⁵	5,797	957	9,131	8,703	3,393
Frozen Pork					
Ribs ⁶	354	1,946	25,959	30,909	9,565
Trimmings ⁷	95	1,039	12,915	27,906	2,553
Other ⁸	2,080	1,096	13,029	33,350	16,811
Other					
Veal		2,130	774	275	88
Lamb & Mutton	5	2,467	2,096	793	397

See footnote(s) at end of table.

--continued

**Stocks in Cold Storage: By Commodity, Region,
and United States, November 30, 2002 (continued)**

Commodity	East South Central	West South Central	Mountain	Pacific	US Total
	<i>1,000 Pounds</i>	<i>1,000 Pounds</i>	<i>1,000 Pounds</i>	<i>1,000 Pounds</i>	<i>1,000 Pounds</i>
Frozen Juice					
Orange Juice Concentrate	31	6,681	63	53,256	1,478,954
Other Juice Concentrate	233	18,569	460	93,209	272,200
Frozen Vegetables ³					
Asparagus		625		2,513	7,189
Limas, Fordhook		693	1	11,072	14,681
Limas, Baby		1,008	4,346	20,406	48,499
Green Beans, Reg. Cut		1,568	119	88,896	187,216
Green Beans, Fr. Style		301	199	8,666	24,144
Broccoli, Spears		17,095	44	19,151	46,416
Broccoli, Chopped & Cut		19,334	456	24,979	69,731
Brussels Sprouts		360	2	12,188	17,935
Carrots, Diced		1,196	93	51,676	99,582
Carrots, Other		7,352	521	89,946	144,836
Cauliflower		8,266	13	23,919	39,524
Corn, Cut		1,932	4,775	277,441	425,709
Corn, Cob		1,360	8,481	191,067	291,594
Mixed Vegetables		5,970	98	19,022	40,877
Okra		26,344		672	51,190
Onion Rings		423	740	608	9,241
Onions, Other		3,753	1,260	14,027	30,562
Blackeye Peas		3,813		322	8,208
Green Peas		3,981	13,566	99,721	205,704
Peas & Carrots Mixed		662	3	4,021	8,365
Spinach		10,450	819	26,334	63,057
Squash, Summer/Zucchini		5,829	812	18,883	46,835
Southern Greens		10,071		1,521	26,275
Other Vegetables		33,071	6,081	172,457	332,216
Potatoes					
French Fries	2,151	14,435	246,582	441,564	957,118
Other Frozen	337	30,818	54,060	108,752	257,431
Meat					
Frozen Beef					
Boneless ⁴	3,692	94,887	12,139	56,884	455,909
Beef Cuts ⁵	3,651	7,576	12,167	7,703	59,078
Frozen Pork					
Ribs ⁶	1,893	4,956	443	2,061	78,086
Trimming ⁷	292	5,576	23	349	50,748
Other ⁸	3,481	3,482	257	2,368	75,954
Other					
Veal		462	31	3,865	7,625
Lamb & Mutton	8	427	76	3,455	9,724

¹ East North Central combined with South Atlantic. Mountain and West North Central Combined with West South Central.

² Middle Atlantic combined with South Atlantic.

³ New England combined with Middle Atlantic. East South Central combined with South Atlantic.

⁴ Includes all boxed boneless beef, such as ground beef, roasts, steaks, loins, strips, rounds, trimmings, etc. Variety meats (edible offal), such as tongues, livers, hearts, kidneys, and other organs removed from slaughtered beef, are included as miscellaneous freezer stocks.

⁵ Includes all boxed primal beef cuts, bone-in.

⁶ Includes spareribs and backribs.

⁷ Includes 42% regular trimmings, 72% special trimmings, boneless picnic meat, jowls, neckbone trimmings, blade, cheek, head, and shank meat, etc. Packaged bacon, sausage, and processed items, such as hot dogs and luncheon meats, are included in miscellaneous cooler or freezer stocks.

⁸ Includes ears, tails, feet, neckbones and snouts.

⁹ Includes tongues, kidneys, livers, stomachs, hearts, chitterlings, salivary glands, and other organs removed from slaughtered hogs.

¹⁰ Includes product unable to be classified elsewhere in this report.

**Public General Warehouses: Cold Storage Space Occupied
by Region and United States, November 2002**

Region	Cooler				Freezer			
	Usable Space	Usable Space Occupied			Usable Space	Usable Space Occupied		
	Nov 30 2002	Nov 30 2001	Oct 31 2002	Nov 30 2002	Nov 30 2002	Nov 30 2001	Oct 31 2002	Nov 30 2002
	<i>1,000 Cu Ft</i>	<i>Percent</i>	<i>Percent</i>	<i>Percent</i>	<i>1,000 Cu Ft</i>	<i>Percent</i>	<i>Percent</i>	<i>Percent</i>
New England	1,783	51	72	74	16,575	70	67	65
Middle Atlantic	47,041	73	64	62	132,111	64	56	53
E. North Central	54,352	41	47	50	219,212	50	51	50
W. North Central	46,754	29	40	43	162,518	52	59	56
South Atlantic	50,234	32	30	34	208,497	54	52	50
E. South Central	9,898	44	45	41	73,138	38	43	39
W. South Central	29,565	11	16	18	142,080	47	54	52
Mountain	6,170	22	16	19	69,180	56	53	51
Pacific	51,660	39	34	30	333,641	65	70	66
US	297,457	39	40	41	1,356,952	55	57	55

Cold Storage Regions



**Apples in Cold Storage: By State
and United States, November 2002**

State	All Warehouses		
	Nov 30, 2001	Oct 31, 2002	Nov 30, 2002
	<i>1,000 Pounds</i>	<i>1,000 Pounds</i>	
CA	103,331	111,835	80,350
MI	392,432	237,062	177,550
N ENG	45,625	47,891	32,613
NY	317,184	214,536	216,678
OH	16,665	18,310	12,300
OR	40,253	56,986	38,535
PA	297,048	222,436	213,544
VA	164,797	148,457	126,361
WA	3,393,600	3,990,000	3,865,974
WV	84,601	81,436	93,374
Other States	119,781	119,602	81,854
US	4,975,317	5,248,551	4,939,133

Survey Procedures: Questionnaires are mailed about the 24th of each month to all operators on the list of approximately 1,400 public and private cold storage warehouses. In addition, apple data are obtained from special surveys and other sources (State Departments of Agriculture, U.S. Apple Association, etc.). All survey data represent stocks as of the end of the month.

Data are collected from warehouses artificially cooled to a temperature of 50 degrees Fahrenheit or lower, and whose food products are normally stored for 30 days or more. All food items in these facilities are reported regardless of the number of days stored at the time of the report. Also included are specialized storage facilities meeting the 30 day requirement, such as fruit houses, dairy manufacturing plants, frozen fruit, fruit juice, and vegetable processors, and poultry and meat packing plants. Excluded are stocks in space maintained by wholesalers, jobbers, distributors, chain stores, locker plants containing individual lockers, meat packer branch houses, and frozen food processors whose entire inventories are turned over more than once a month.

Estimating Procedures: Data for reporting firms are added to estimates for non-reporting firms to obtain regional and National totals. Estimates for non-reporting firms are obtained by multiplying the previous month's figure by a percent change from the previous month. The percent change is calculated for each item from totals of the current and previous month summed from firms that reported both months.

Revision Policy: Data are revised the following month based on late reports or corrected data. Final figures are published in the annual summary in February of the following year.

Reliability: Reports are received from 900 firms each month which represent about 70 percent of the total capacity. Firms that are not on the list or firms who have never reported are not represented in the data. Monthly data can vary due to different firms reporting month to month. Survey data are also subject to non-sampling errors such as omissions and mistakes in reporting and in processing the data. While these errors cannot be measured directly, they are minimized by carefully reviewing all reported data for consistency and reasonableness.

The next "Cold Storage" report will be released at 3 p.m. ET on January 21, 2003.

The United States Department of Agriculture (USDA) prohibits discrimination in all its programs on the basis of race, color, national origin, gender, religion, age, disability, political beliefs, sexual orientation, and marital or family status. (Not all prohibited bases apply to all programs.) Persons with disabilities who require alternative means for communication of program information (braille, large print, audiotape, etc.) should contact the USDA's TARGET Center at 202-720-2600 (voice and TDD).

To file a complaint of discrimination, write USDA, Director, Office of Civil Rights, Room 326-W, Whitten Building, 1400 Independence Avenue, SW, Washington, D.C., 20250-9410, or call 202-720-5964 (voice or TDD). USDA is an equal opportunity provider and employer.

ACCESS TO REPORTS!!

For your convenience, there are several ways to obtain NASS reports, data products, and services:

INTERNET ACCESS

All NASS reports are available free of charge on the worldwide Internet. For access, connect to the Internet and go to the NASS Home Page at: <http://www.usda.gov/nass/>. Select "Today's Reports" or Publications and then Reports Calendar or Publications and then Search, by Title or Subject.

E-MAIL SUBSCRIPTION

All NASS reports are available by subscription free of charge direct to your e-mail address. Starting with the NASS Home Page at <http://www.usda.gov/nass/>, click on **Publications**, then click on the **Subscribe by E-mail** button which takes you to the page describing e-mail delivery of reports. Finally, click on **Go to the Subscription Page** and follow the instructions.

AUTOFAX ACCESS

NASSFax service is available for some reports from your fax machine. Please call 202-720-2000, using the handset attached to your fax. Respond to the voice prompts. Document 0411 is a list of available reports.

PRINTED REPORTS OR DATA PRODUCTS

CALL OUR TOLL-FREE ORDER DESK: 800-999-6779 (U.S. and Canada)
Other areas, please call 703-605-6220 FAX: 703-605-6900
(Visa, MasterCard, check, or money order acceptable for payment.)

ASSISTANCE

For **assistance** with general agricultural statistics or further information about NASS or its products or services, contact the **Agricultural Statistics Hotline** at **800-727-9540**, 7:30 a.m. to 4:00 p.m. ET, or e-mail: nass@nass.usda.gov.
