



Cold Storage

Released March 20, 2003, by the National Agricultural Statistics Service (NASS), Agricultural Statistics Board, U.S. Department of Agriculture. For information on "Cold Storage" call Barry Adams at (202) 720-8784, office hours 7:00 a.m. to 4:30 p.m. ET.

HIGHLIGHTS

Frozen food stocks in refrigerated warehouses on February 28, 2003, were greater than year earlier levels for poultry and red meat.

Butter stocks were 17 percent above January 2003 and 83 percent above a year ago.

Total red meat supplies in freezers were 3 percent below January 31, 2003 and 1 percent above February 2002. Frozen pork stocks were 1 percent above last month and 2 percent above last year. Stocks of pork bellies were 8 percent above last month but 34 percent below February 2002 stocks.

Total frozen poultry supplies on February 28, 2003 were up 1 percent from last month and slightly above last year's level. Total stocks of chicken were down 7 percent from last month and down 8 percent from last year's level. Total pounds of turkey in freezers increased 13 percent from last month and were 16 percent above last year.

Public cooler occupancy on February 28, 2003, was at 42 percent of capacity, up 1 point from last year. Public freezer occupancy, was at 52 percent, up 2 points from last year.

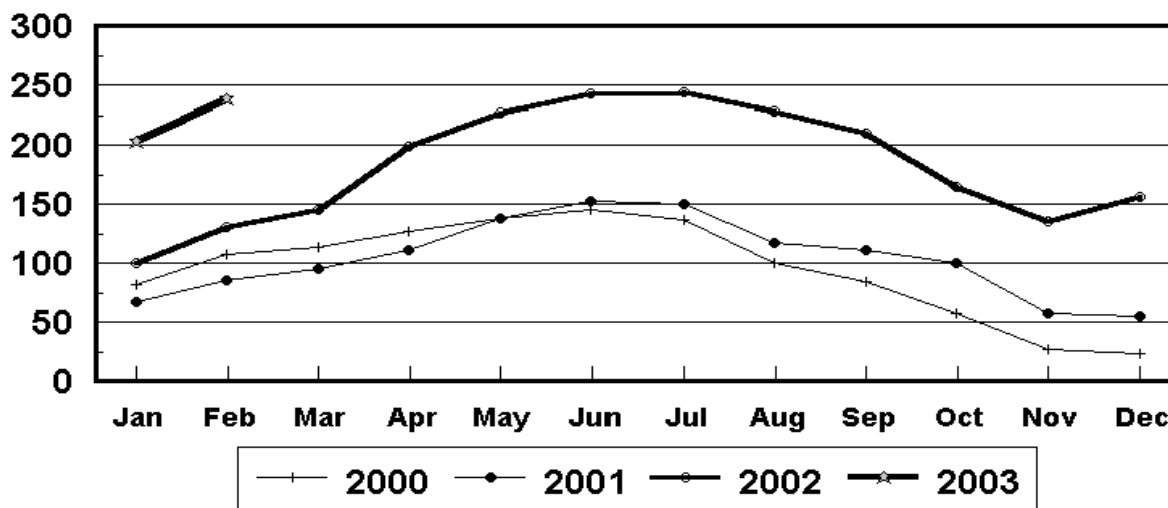
This page is intentionally blank.

Table of Contents

	Page
Stocks in Cold Storage: By Commodity, United States, February 2003	4
Stocks in Cold Storage: By Commodity, Region, and United States, January 31, 2003	8
Stocks in Cold Storage: By Commodity, Region, and United States, February 28, 2003	12
Public General Warehouses: Cold Storage Space Occupied by Region and United States, February 2003	16
Apples in Cold Storage: By State and United States, February 28, 2002 and 2003	17
Survey and Estimating Procedures, Revision Policy and Reliability	18

Butter-United States Cold Storage Stocks, 2000-2003

Million Pounds



**Stocks in Cold Storage: By Commodity,
United States, February 2003**

Commodity	Stocks in All Warehouses			Percent of		Public Warehouse Stocks
	Feb 28, 2002	Jan 31, 2003	Feb 28, 2003	Feb 2002	Jan 2003	Feb 28, 2003
	<i>1,000 Pounds</i>	<i>1,000 Pounds</i>	<i>1,000 Pounds</i>	<i>Percent</i>	<i>Percent</i>	<i>1,000 Lbs</i>
Fresh Fruit						
Apples						
Regular Storage	324,764	401,890	270,234	83	67	
Controlled Atmosphere	2,632,823	3,175,041	2,694,314	102	85	
Total	2,957,587	3,576,931	2,964,548	100	83	1,958
Pears						
Bartlett	916	77	73	8	95	
Other Varieties	187,141	246,145	191,218	102	78	
Total	188,057	246,222	191,291	102	78	63
Nuts						
Shelled						
Peanuts	541,345	284,978	306,937	57	108	
Pecans	42,295	37,681	40,721	96	108	
Other Shelled	135,704	122,161	137,391	101	112	
Total	719,344	444,820	485,049	67	109	192,939
In-Shell						
Peanuts	15,645	12,504	15,556	99	124	
Pecans	195,471	99,229	101,451	52	102	
Other In-Shell	14,185	7,872	7,311	52	93	
Total	225,301	119,605	124,318	55	104	42,302
Dairy Products						
Butter, Total	130,124	202,660	238,016	183	117	223,032
(Government Owned)	1,200	349	725	60	208	
Natural Cheese						
American, Total	491,147	512,192	534,030	109	104	
(Government Owned)	753	280	368	49	131	
Swiss	12,711	25,125	24,632	194	98	
Other Natural Cheese	216,463	222,166	204,474	94	92	
Total	720,321	759,483	763,136	106	100	429,819
Eggs, Frozen						
Whites	2,204	1,818	2,579	117	142	
Yolks	1,036	924	1,106	107	120	
Whole & Mixed	7,282	8,778	9,503	130	108	
Unclassified	3,381	3,820	3,924	116	103	
Total	13,903	15,340	17,112	123	112	16,505
Frozen Poultry						
Chicken						
Broilers, Fryers						
Roasters (Whole)	26,981	25,963	24,861	92	96	
Hens, Mature Chickens	4,076	4,547	4,439	109	98	
Other	705,238	692,725	645,388	92	93	
Total Chicken	736,295	723,235	674,688	92	93	

See footnote(s) at end of table.

--continued

**Stocks in Cold Storage: By Commodity,
United States, February 2003**

Commodity	Stocks in All Warehouses			Percent of		Public Warehouse Stocks
	Feb 28, 2002	Jan 31, 2003	Feb 28, 2003	Feb 2002	Jan 2003	Feb 28, 2003
	<i>1,000 Pounds</i>	<i>1,000 Pounds</i>	<i>1,000 Pounds</i>	<i>Percent</i>	<i>Percent</i>	<i>1,000 Lbs</i>
Turkeys						
Toms (Whole Carcasses)	117,250	81,575	104,952	90	129	
Hens (Whole Carcasses)	83,929	54,763	71,825	86	131	
Whole Turkeys	201,179	136,338	176,777	88	130	
Other Turkey	212,064	286,732	302,085	142	105	
Total Turkey	413,243	423,070	478,862	116	113	363,130
Ducks	6,575	5,222	5,135	78	98	
Total Poultry	1,156,113	1,151,527	1,158,685	100	101	1,001,347
Frozen Fruit						
Apples	65,459	47,797	56,768	87	119	
Apricots	4,343	3,912	3,487	80	89	
Blackberries, Total	21,792	19,443	17,017	78	88	
IQF	13,207	12,342	11,125	84	90	
Pails and Tubs	2,792	1,668	1,369	49	82	
Barrels, 400 lbs net	4,578	4,810	3,934	86	82	
Concentrate	1,215	623	589	48	95	
Blueberries	84,492	76,912	65,813	78	86	
Boysenberries	2,448	2,460	2,410	98	98	
Cherries, Tart (RTP)	115,834	48,085	38,770	33	81	
Cherries, Tart (Juice)	1,846	1,362	1,594	86	117	
Cherries, Sweet	12,100	7,195	6,762	56	94	
Grapes	4,124	6,226	6,072	147	98	
Peaches	51,198	60,817	52,144	102	86	
Raspberries, Black	2,486	1,991	1,939	78	97	
Raspberries, Red, Total	36,220	42,535	38,048	105	89	
IQF	13,881	15,028	14,119	102	94	
Pails and Tubs	7,867	9,706	8,818	112	91	
Barrels, 400 lbs net	13,174	16,995	14,203	108	84	
Concentrate	1,298	806	908	70	113	
Strawberries, Total	170,540	219,946	202,338	119	92	
IQF and Poly	106,388	132,840	123,634	116	93	
Pails and Tubs	48,062	52,263	46,845	97	90	
Barrels and Drums	9,769	28,880	25,049	256	87	
Juice Stock	6,321	5,963	6,810	108	114	
Other Frozen Fruit	375,838	384,409	361,909	96	94	
Total	948,720	923,090	855,071	90	93	704,109
Frozen Juice						
Orange Juice Conc. ¹	1,770,894	1,851,914	1,833,394	104	99	
(Gallon Equivalent)	178,950	187,138	185,266			
Other Juice Concentrate	281,904	253,746	252,824	90	100	
Total	2,052,798	2,105,660	2,000,067	97	95	206,437

See footnote(s) at end of table.

--continued

**Stocks in Cold Storage: By Commodity,
United States, February 2003**

Commodity	Stocks in All Warehouses			Percent of		Public Warehouse Stocks
	Feb 28, 2002	Jan 31, 2003	Feb 28, 2003	Feb 2002	Jan 2003	Feb 28, 2003
	<i>1,000 Pounds</i>	<i>1,000 Pounds</i>	<i>1,000 Pounds</i>	<i>Percent</i>	<i>Percent</i>	<i>1,000 Lbs</i>
Frozen Vegetables						
Asparagus	8,599	6,642	5,879	68	89	
Limas, Fordhook	10,445	10,743	8,880	85	83	
Limas, Baby	42,887	41,391	40,049	93	97	
Green Beans, Reg. Cut	102,337	141,964	132,659	130	93	
Green Beans, Fr. Style	14,995	19,638	16,003	107	81	
Broccoli, Spears	47,431	51,898	53,249	112	103	
Broccoli, Chopped & Cut	78,297	67,525	72,495	93	107	
Brussels Sprouts	15,144	18,860	17,034	112	90	
Carrots, Diced	74,028	83,470	70,056	95	84	
Carrots, Other	139,790	128,444	117,725	84	92	
Cauliflower	33,288	34,228	30,788	92	90	
Corn, Cut	290,103	360,346	330,215	114	92	
Corn, Cob	187,863	251,733	225,622	120	90	
Mixed Vegetables	55,344	44,094	43,023	78	98	
Okra	33,964	42,345	36,373	107	86	
Onion Rings	7,138	9,088	6,696	94	74	
Onions, Other	27,713	30,676	31,525	114	103	
Blackeye Peas	5,891	5,252	5,276	90	100	
Green Peas	174,097	143,201	115,245	66	80	
Peas & Carrots Mixed	10,746	7,285	7,096	66	97	
Spinach	66,518	59,784	57,405	86	96	
Squash, Summer/Zucchini	40,114	39,578	37,132	93	94	
Southern Greens	30,252	24,893	23,952	79	96	
Other Vegetables	301,858	296,305	289,443	96	98	
Total	1,798,842	1,919,383	1,773,820	99	92	1,346,886
Potatoes						
French Fries	1,031,776	915,970	948,925	92	104	
Other Frozen	239,726	255,893	259,867	108	102	
Total	1,271,502	1,171,863	1,208,792	95	103	890,745

See footnote(s) at end of table.

--continued

**Stocks in Cold Storage: By Commodity,
United States, February 2003 (Continued)**

Commodity	Stocks in All Warehouses			Percent of		Public Warehouse Stocks
	Feb 28, 2002	Jan 31, 2003	Feb 28, 2003	Feb 2002	Jan 2003	Feb 28, 2003
	<i>1,000 Pounds</i>	<i>1,000 Pounds</i>	<i>1,000 Pounds</i>	<i>Percent</i>	<i>Percent</i>	<i>1,000 Lbs</i>
Meat						
Frozen Beef						
Boneless ²	387,401	418,354	380,979	98	91	
Beef Cuts ³	51,627	64,387	61,988	120	96	
Total	439,028	482,741	442,967	101	92	439,005
(Government Owned)	4,308	2,563	2,487	58	97	
Frozen Pork						
Picnics, Bone-in	12,617	10,365	11,695	93	113	
Hams, Total	74,470	79,453	90,239	121	114	87,403
Bone-in	33,298	41,642	50,471	152	121	49,886
Boneless ⁴	41,172	37,811	39,768	97	105	37,517
Bellies	57,569	35,354	38,091	66	108	
Loins, Total	40,218	44,017	44,261	110	101	41,001
Bone-in	18,368	22,879	22,927	125	100	
Boneless ⁵	21,850	21,138	21,334	98	101	
Ribs ⁶	83,356	98,510	97,202	117	99	
Butts	17,270	18,090	17,659	102	98	
Trimming ⁷	64,150	55,237	54,792	85	99	
Other ⁸	75,735	80,676	76,579	101	95	
Variety Meats ⁹	50,422	40,386	43,621	87	108	
Unclassified ¹⁰	35,122	50,792	45,325	129	89	
Total	510,929	512,880	519,464	102	101	471,901
(Government Owned)	1,386	1,692	1,369	99	81	
Other						
Veal	4,873	7,086	6,016	123	85	
Lamb & Mutton	11,269	6,232	5,425	48	87	
Total	16,142	13,318	11,441	71	86	11,171
Canned						
Canned Hams	4,342	5,725	5,846	135	102	
Other Canned Meat	275	1,049	998	363	95	
Total	4,617	6,774	6,844	148	101	6,709
Total	970,716	1,015,713	980,716	101	97	928,786
Miscellaneous						
Cooler	765,035	713,158	651,440	85	91	291,601
Freezer	2,206,916	2,110,437	2,203,480	100	104	2,127,185
Total	2,971,951	2,823,595	2,854,920	96	101	2,418,786
Commodities						
Stored in Coolers	5,592,740	5,874,482	5,199,668	93	89	1,109,563
Stored in Freezers	10,532,539	10,601,410	10,415,873	99	98	7,438,323
Total	16,125,279	16,475,892	15,615,541	97	95	8,547,886

¹ Adjusted to 42.0 degrees Brix equivalent (9.896 pounds per gallon).

² Includes all boxed boneless beef, such as ground beef, roasts, steaks, loins, strips, rounds, trimmings, etc. Variety meats (edible offal), such as tongues, livers, hearts, kidneys, and other organs removed from slaughtered beef, are included as miscellaneous freezer stocks.

³ Includes all boxed primal beef cuts, bone-in.

⁴ Includes full ham, bone removed and individual muscles separated.

⁵ Includes pork tenderloins.

⁶ Includes spareribs and backribs.

⁷ Includes 42% regular trimmings, 72% special trimmings, boneless picnic meat, jowls, neckbone trimmings, blade, cheek, head, and shank meat, etc. Packaged bacon, sausage, and processed items, such as hot dogs and luncheon meats, are included in miscellaneous cooler or freezer stocks.

⁸ Includes ears, tails, feet, neckbones and snouts.

⁹ Includes tongues, kidneys, livers, stomachs, hearts, chitterlings, salivary glands, and other organs removed from slaughtered hogs.

¹⁰ Includes product unable to be classified elsewhere in this report.

**Stocks in Cold Storage: By Commodity, Region,
and United States, January 31, 2003**

Commodity	New England	Middle Atlantic	East North Central	West North Central	South Atlantic
	<i>1,000 Pounds</i>	<i>1,000 Pounds</i>	<i>1,000 Pounds</i>	<i>1,000 Pounds</i>	<i>1,000 Pounds</i>
Total Fresh Apples	19,546	364,216	119,788	152	144,579
Nuts					
Shelled					
Peanuts		17	20	17	159,921
Pecans ¹		69			13,741
In-Shell					
Pecans ¹					20,634
Dairy Products					
Natural Cheese					
American, Total	19,157	57,436	207,898	120,179	367
Other Natural Cheese	247	32,423	118,168	53,918	2,486
Frozen Poultry					
Chicken					
Broilers, Fryers					
Roasters (Whole)	11	1,059	103	1,445	6,046
Hens, Mature Chickens	12	301	295	207	1,783
Other	1,296	19,132	13,560	25,812	218,560
Total Chicken	1,319	20,492	13,958	27,464	226,389
Turkeys					
Whole Turkeys	1,160	4,035	1,431	36,652	30,160
Other Turkey	537	11,637	22,933	65,692	135,795
Total Turkey	1,697	15,672	24,364	102,344	165,955
Ducks		392	4,650		25
Total Poultry	3,016	36,556	42,972	129,808	392,369
Frozen Fruit					
Apples	63	12,513	25,262	128	915
Blueberries	14,744	5,579	36,719	1,388	2,123
Cherries, Tart (RTP)	7	4,198	32,558	807	597
Cherries, Sweet		328	3,278	634	46
Peaches	28	2,581	6,330	2,170	503
Raspberries, Red	157	937	1,172	117	124
Strawberries, Total	106	3,698	3,905	576	812
Other Frozen Fruit	21,618	13,356	212,611	2,158	6,120

See footnote(s) at end of table.

--continued

**Stocks in Cold Storage: By Commodity, Region,
and United States, January 31, 2003 (continued)**

Commodity	East South Central	West South Central	Mountain	Pacific	US Total
	<i>1,000 Pounds</i>	<i>1,000 Pounds</i>	<i>1,000 Pounds</i>	<i>1,000 Pounds</i>	<i>1,000 Pounds</i>
Total Fresh Apples		4,563	14,484	2,909,603	3,576,931
Nuts					
Shelled					
Peanuts	25,196	98,779	95	933	284,978
Pecans ¹	815	22,918		138	37,681
In-Shell					
Pecans ¹	3,259	75,336			99,229
Dairy Products					
Natural Cheese					
American, Total	538	1,428	11,635	93,554	512,192
Other Natural Cheese	216	205	839	13,664	222,166
Frozen Poultry					
Chicken					
Broilers, Fryers					
Roasters (Whole)	3,551	10,905	348	2,495	25,963
Hens, Mature Chickens	456	424		1,069	4,547
Other	124,571	240,566	2,052	47,176	692,725
Total Chicken	128,578	251,895	2,400	50,740	723,235
Turkeys					
Whole Turkeys	581	25,553	13,533	23,233	136,338
Other Turkey	1,197	31,898	10,204	6,839	286,732
Total Turkey	1,778	57,451	23,737	30,072	423,070
Ducks		47	24	84	5,222
Total Poultry	130,356	309,393	26,161	80,896	1,151,527
Frozen Fruit					
Apples	90	1,280	194	7,352	47,797
Blueberries	110	720	273	15,256	76,912
Cherries, Tart (RTP)	31	1,134	2,597	6,156	48,085
Cherries, Sweet	1	52	860	1,996	7,195
Peaches	87	1,409	133	47,576	60,817
Raspberries, Red	59	711	2	39,256	42,535
Strawberries, Total	936	18,941	181	190,791	219,946
Other Frozen Fruit	174	14,943	6,265	107,164	384,409

See footnote(s) at end of table.

--continued

**Stocks in Cold Storage: By Commodity, Region,
and United States, January 31, 2003 (continued)**

Commodity	New England	Middle Atlantic	East North Central	West North Central	South Atlantic
	<i>1,000 Pounds</i>	<i>1,000 Pounds</i>	<i>1,000 Pounds</i>	<i>1,000 Pounds</i>	<i>1,000 Pounds</i>
Frozen Juice					
Orange Juice Conc. ²	200		657	155	1,776,861
Other Juice Concentrate	546	30,990	11,629	1,543	100,330
Frozen Vegetables ³					
Asparagus		916	2,217	57	626
Limas, Fordhook		1,594	752	21	399
Limas, Baby		7,885	2,599	448	8,926
Green Beans, Reg. Cut		36,999	35,976	608	3,439
Green Beans, Fr. Style		5,494	4,692	113	324
Broccoli, Spears		7,321	4,992	7	2,128
Broccoli, Chopped & Cut		3,829	7,517	8,443	5,378
Brussels Sprouts		2,240	1,628	6	1,658
Carrots, Diced		8,609	34,999	214	1,386
Carrots, Other		13,066	29,638	443	4,415
Cauliflower		2,278	3,541	38	879
Corn, Cut		35,286	70,370	23,584	3,895
Corn, Cob		16,798	31,242	24,088	5,169
Mixed Vegetables		4,092	9,269	188	1,687
Okra		1,897	562	7,427	8,001
Onion Rings		314	3,904	1,096	1,826
Onions, Other		2,320	4,518	184	2,987
Blackeye Peas		184	56	24	3,813
Green Peas		29,325	24,513	8,473	5,616
Peas & Carrots Mixed		981	1,447	100	452
Spinach		15,667	3,969	211	4,192
Squash, Summer/Zucchini		4,939	10,309	63	4,292
Southern Greens		2,555	894	122	6,600
Other Vegetables		38,843	37,075	12,331	20,708
Potatoes					
French Fries	38,910	30,744	56,619	103,920	24,758
Other Frozen	5,061	12,316	31,508	6,926	4,174
Meat					
Frozen Beef					
Boneless ⁴	10,423	54,969	52,808	139,293	25,444
Beef Cuts ⁵	5,163	2,403	10,430	12,119	2,654
Frozen Pork					
Ribs ⁶	447	2,079	34,544	39,668	11,857
Trimmings ⁷	155	1,246	11,157	32,721	3,242
Other ⁸	2,216	1,220	13,311	36,326	18,084
Other					
Veal		1,607	1,035	249	49
Lamb & Mutton	4	659	1,290	511	276

See footnote(s) at end of table.

--continued

**Stocks in Cold Storage: By Commodity, Region,
and United States, January 31, 2003 (continued)**

Commodity	East South Central	West South Central	Mountain	Pacific	US Total
	<i>1,000 Pounds</i>	<i>1,000 Pounds</i>	<i>1,000 Pounds</i>	<i>1,000 Pounds</i>	<i>1,000 Pounds</i>
Frozen Juice					
Orange Juice Concentrate	42	7,160	169	66,670	1,851,914
Other Juice Concentrate	120	21,217	310	87,061	253,746
Frozen Vegetables ³					
Asparagus		566	20	2,240	6,642
Limas, Fordhook		491		7,486	10,743
Limas, Baby		1,044	3,255	17,234	41,391
Green Beans, Reg. Cut		1,330	87	63,525	141,964
Green Beans, Fr. Style		288	128	8,599	19,638
Broccoli, Spears		17,728	107	19,615	51,898
Broccoli, Chopped & Cut		20,420	589	21,349	67,525
Brussels Sprouts		366	2	12,960	18,860
Carrots, Diced		1,362		36,900	83,470
Carrots, Other		6,896	605	73,381	128,444
Cauliflower		9,136	8	18,348	34,228
Corn, Cut		2,169	4,629	220,413	360,346
Corn, Cob		1,287	4,006	169,143	251,733
Mixed Vegetables		5,777	38	23,043	44,094
Okra		23,963		495	42,345
Onion Rings		818	653	477	9,088
Onions, Other		2,642	3,507	14,518	30,676
Blackeye Peas		1,031		144	5,252
Green Peas		3,265	9,147	62,862	143,201
Peas & Carrots Mixed		786	3	3,516	7,285
Spinach		16,445	24	19,276	59,784
Squash, Summer/Zucchini		5,546	527	13,902	39,578
Southern Greens		13,389		1,333	24,893
Other Vegetables		32,591	8,122	146,635	296,305
Potatoes					
French Fries	2,252	11,129	211,537	436,101	915,970
Other Frozen	597	26,848	51,874	116,589	255,893
Meat					
Frozen Beef					
Boneless ⁴	4,794	72,401	10,826	47,396	418,354
Beef Cuts ⁵	3,875	7,531	13,816	6,396	64,387
Frozen Pork					
Ribs ⁶	3,233	4,729	184	1,769	98,510
Trimming ⁷	199	5,934	10	573	55,237
Other ⁸	3,375	3,292	226	2,626	80,676
Other					
Veal	342	167	2	3,635	7,086
Lamb & Mutton	11	254	81	3,146	6,232

¹ East North Central combined with South Atlantic. Mountain and West North Central combined with West South Central.

² Middle Atlantic combined with South Atlantic.

³ New England combined with Middle Atlantic. East South Central combined with South Atlantic.

⁴ Includes all boxed boneless beef, such as ground beef, roasts, steaks, loins, strips, rounds, trimmings, etc. Variety meats (edible offal), such as tongues, livers, hearts, kidneys, and other organs removed from slaughtered beef, are included as miscellaneous freezer stocks.

⁵ Includes all boxed primal beef cuts, bone-in.

⁶ Includes spareribs and backribs.

⁷ Includes 42% regular trimmings, 72% special trimmings, boneless picnic meat, jowls, neckbone trimmings, blade, cheek, head, and shank meat, etc. Packaged bacon, sausage, and processed items, such as hot dogs and luncheon meats, are included in miscellaneous cooler or freezer stocks.

⁸ Includes ears, tails, feet, neckbones and snouts.

⁹ Includes tongues, kidneys, livers, stomachs, hearts, chitterlings, salivary glands, and other organs removed from slaughtered hogs.

¹⁰ Includes product unable to be classified elsewhere in this report.

**Stocks in Cold Storage: By Commodity, Region,
and United States, February 28, 2003**

Commodity	New England	Middle Atlantic	East North Central	West North Central	South Atlantic
	<i>1,000 Pounds</i>	<i>1,000 Pounds</i>	<i>1,000 Pounds</i>	<i>1,000 Pounds</i>	<i>1,000 Pounds</i>
Total Fresh Apples	14,899	297,349	104,569		135,832
Nuts					
Shelled					
Peanuts		2	21	18	175,154
Pecans ¹		62			15,001
In-Shell					
Pecans ¹					19,270
Dairy Products					
Natural Cheese					
American, Total	21,737	58,459	220,076	124,524	104
Other Natural Cheese	258	17,463	119,013	51,663	1,856
Frozen Poultry					
Chicken					
Broilers, Fryers					
Roasters (Whole)		933	128	1,052	5,819
Hens, Mature Chickens	12	268	284	105	1,821
Other	1,539	17,955	14,188	23,671	198,959
Total Chicken	1,551	19,156	14,600	24,828	206,599
Turkeys					
Whole Turkeys	1,181	4,808	2,058	52,799	40,032
Other Turkey	767	11,150	22,111	74,731	136,800
Total Turkey	1,948	15,958	24,169	127,530	176,832
Ducks	2	441	4,512		30
Total Poultry	3,501	35,555	43,281	152,358	383,461
Frozen Fruit					
Apples	61	14,564	31,554	174	1,042
Blueberries	13,784	4,530	30,699	1,497	1,642
Cherries, Tart (RTP)	6	3,570	26,029	767	589
Cherries, Sweet		316	2,884	600	46
Peaches	24	2,489	5,551	1,989	508
Raspberries, Red	161	1,122	1,256	81	103
Strawberries, Total	54	4,160	3,921	620	909
Other Frozen Fruit	33,316	12,177	192,620	2,498	5,500

See footnote(s) at end of table.

--continued

**Stocks in Cold Storage: By Commodity, Region,
and United States, February 28, 2003 (continued)**

Commodity	East South Central	West South Central	Mountain	Pacific	US Total
	<i>1,000 Pounds</i>	<i>1,000 Pounds</i>	<i>1,000 Pounds</i>	<i>1,000 Pounds</i>	<i>1,000 Pounds</i>
Total Fresh Apples		4,259	7,003	2,400,637	2,964,548
Nuts					
Shelled					
Peanuts	28,965	101,760	91	926	306,937
Pecans ¹	957	24,566		135	40,721
In-Shell					
Pecans ¹	2,727	79,454			101,451
Dairy Products					
Natural Cheese					
American, Total	433	1,668	11,185	95,844	534,030
Other Natural Cheese	177	221	797	13,026	204,474
Frozen Poultry					
Chicken					
Broilers, Fryers					
Roasters (Whole)	2,884	10,948	370	2,727	24,861
Hens, Mature Chickens	425	601		923	4,439
Other	117,255	224,224	1,965	45,632	645,388
Total Chicken	120,564	235,773	2,335	49,282	674,688
Turkeys					
Whole Turkeys	656	34,232	9,812	31,199	176,777
Other Turkey	1,078	30,755	10,620	14,073	302,085
Total Turkey	1,734	64,987	20,432	45,272	478,862
Ducks		47	24	79	5,135
Total Poultry	122,298	300,807	22,791	94,633	1,158,685
Frozen Fruit					
Apples	104	1,399	220	7,650	56,768
Blueberries	111	740	287	12,523	65,813
Cherries, Tart (RTP)	43	1,172	844	5,750	38,770
Cherries, Sweet	1	45	961	1,909	6,762
Peaches	57	1,393	158	39,975	52,144
Raspberries, Red	165	485	2	34,673	38,048
Strawberries, Total	892	19,435	182	172,165	202,338
Other Frozen Fruit	162	15,617	5,657	94,362	361,909

See footnote(s) at end of table.

--continued

**Stocks in Cold Storage: By Commodity, Region,
and United States, February 28, 2003 (continued)**

Commodity	New England	Middle Atlantic	East North Central	West North Central	South Atlantic
	<i>1,000 Pounds</i>	<i>1,000 Pounds</i>	<i>1,000 Pounds</i>	<i>1,000 Pounds</i>	<i>1,000 Pounds</i>
Frozen Juice					
Orange Juice Conc. ²	183		601	138	1,756,442
Other Juice Concentrate	574	30,374	11,093	1,736	102,196
Frozen Vegetables ³					
Asparagus		927	1,783	34	503
Limas, Fordhook		1,466	653	21	463
Limas, Baby		7,774	2,448	454	9,934
Green Beans, Reg. Cut		33,934	31,347	471	3,588
Green Beans, Fr. Style		5,272	3,594	87	439
Broccoli, Spears		7,386	5,031	6	2,525
Broccoli, Chopped & Cut		4,149	7,369	7,119	5,415
Brussels Sprouts		2,259	1,482	1	1,700
Carrots, Diced		7,796	30,369	282	1,398
Carrots, Other		12,133	26,346	401	4,164
Cauliflower		2,248	3,309	50	939
Corn, Cut		30,535	64,697	20,890	3,770
Corn, Cob		15,521	28,081	22,733	4,225
Mixed Vegetables		3,949	9,799	168	1,648
Okra		1,637	567	5,485	6,573
Onion Rings		314	3,526	633	565
Onions, Other		2,263	4,374	231	3,153
Blackeye Peas		281	57	24	3,689
Green Peas		24,172	21,190	7,742	4,886
Peas & Carrots Mixed		916	1,372	120	458
Spinach		11,944	3,549	190	3,317
Squash, Summer/Zucchini		4,560	9,223	15	4,039
Southern Greens		2,753	1,204	82	6,735
Other Vegetables		37,950	35,866	11,462	21,085
Potatoes					
French Fries	39,314	32,476	54,848	116,326	34,059
Other Frozen	5,507	13,401	30,967	8,567	3,688
Meat					
Frozen Beef					
Boneless ⁴	6,021	49,310	46,006	132,172	20,560
Beef Cuts ⁵	4,200	2,203	10,272	11,246	2,857
Frozen Pork					
Ribs ⁶	441	2,055	34,685	38,193	10,284
Trimmings ⁷	196	1,260	10,859	33,011	2,220
Other ⁸	2,081	960	12,135	36,338	15,599
Other					
Veal		1,466	864	221	46
Lamb & Mutton	4	571	1,133	390	294

See footnote(s) at end of table.

--continued

**Stocks in Cold Storage: By Commodity, Region,
and United States, February 28, 2003 (continued)**

Commodity	East South Central	West South Central	Mountain	Pacific	US Total
	<i>1,000 Pounds</i>	<i>1,000 Pounds</i>	<i>1,000 Pounds</i>	<i>1,000 Pounds</i>	<i>1,000 Pounds</i>
Frozen Juice					
Orange Juice Concentrate	39	7,598	159	68,234	1,833,394
Other Juice Concentrate	175	22,027	389	84,260	252,824
Frozen Vegetables ³					
Asparagus		584	11	2,037	5,879
Limas, Fordhook		379	2	5,896	8,880
Limas, Baby		1,251	3,100	15,088	40,049
Green Beans, Reg. Cut		1,449	41	61,829	132,659
Green Beans, Fr. Style		406	91	6,114	16,003
Broccoli, Spears		19,981	101	18,219	53,249
Broccoli, Chopped & Cut		23,652	621	24,170	72,495
Brussels Sprouts		341	2	11,249	17,034
Carrots, Diced		1,377	8	28,826	70,056
Carrots, Other		7,764	583	66,334	117,725
Cauliflower		8,273	11	15,958	30,788
Corn, Cut		1,974	3,888	204,461	330,215
Corn, Cob		1,284	47	153,731	225,622
Mixed Vegetables		5,675	153	21,631	43,023
Okra		21,567		544	36,373
Onion Rings		740	425	493	6,696
Onions, Other		2,566	3,596	15,342	31,525
Blackeye Peas		1,014		211	5,276
Green Peas		2,791	6,642	47,822	115,245
Peas & Carrots Mixed		896	3	3,331	7,096
Spinach		19,214	21	19,170	57,405
Squash, Summer/Zucchini		5,303	391	13,601	37,132
Southern Greens		11,963		1,215	23,952
Other Vegetables		40,788	7,743	134,549	289,443
Potatoes					
French Fries	2,191	10,724	199,057	459,930	948,925
Other Frozen	684	24,163	44,619	128,271	259,867
Meat					
Frozen Beef					
Boneless ⁴	3,943	70,588	9,921	42,458	380,979
Beef Cuts ⁵	3,825	7,185	14,890	5,310	61,988
Frozen Pork					
Ribs ⁶	4,204	5,137	157	2,046	97,202
Trimming ⁷	223	6,437	10	576	54,792
Other ⁸	3,283	3,452	196	2,535	76,579
Other					
Veal	170	146	8	3,095	6,016
Lamb & Mutton	8	160	100	2,765	5,425

¹ East North Central combined with South Atlantic. Mountain and West North Central Combined with West South Central.

² Middle Atlantic combined with South Atlantic.

³ New England combined with Middle Atlantic. East South Central combined with South Atlantic.

⁴ Includes all boxed boneless beef, such as ground beef, roasts, steaks, loins, strips, rounds, trimmings, etc. Variety meats (edible offal), such as tongues, livers, hearts, kidneys, and other organs removed from slaughtered beef, are included as miscellaneous freezer stocks.

⁵ Includes all boxed primal beef cuts, bone-in.

⁶ Includes spareribs and backribs.

⁷ Includes 42% regular trimmings, 72% special trimmings, boneless picnic meat, jowls, neckbone trimmings, blade, cheek, head, and shank meat, etc. Packaged bacon, sausage, and processed items, such as hot dogs and luncheon meats, are included in miscellaneous cooler or freezer stocks.

⁸ Includes ears, tails, feet, neckbones and snouts.

⁹ Includes tongues, kidneys, livers, stomachs, hearts, chitterlings, salivary glands, and other organs removed from slaughtered hogs.

¹⁰ Includes product unable to be classified elsewhere in this report.

**Public General Warehouses: Cold Storage Space Occupied
by Region and United States, February 2003**

Region	Cooler				Freezer			
	Usable Space	Usable Space Occupied			Usable Space	Usable Space Occupied		
	Feb 28 2003	Feb 28 2002	Jan 31 2003	Feb 28 2003	Feb 28 2003	Feb 28 2002	Jan 31 2003	Feb 28 2003
	<i>1,000 Cu Ft</i>	<i>Percent</i>	<i>Percent</i>	<i>Percent</i>	<i>1,000 Cu Ft</i>	<i>Percent</i>	<i>Percent</i>	<i>Percent</i>
New England	1,783	60	73	68	16,575	65	60	63
Middle Atlantic	46,907	70	61	57	137,966	56	52	52
E. North Central	54,813	38	51	50	218,866	44	52	49
W. North Central	46,749	41	40	40	162,522	52	57	57
South Atlantic	53,205	35	32	32	204,680	52	54	52
E. South Central	9,868	47	49	45	72,758	40	40	38
W. South Central	29,565	21	28	29	142,080	54	51	51
Mountain	6,149	16	38	37	68,505	43	55	53
Pacific	51,847	36	35	38	333,641	51	59	56
US	300,886	41	42	42	1,357,593	50	54	52

Cold Storage Regions



**Apples in Cold Storage: By State
and United States, February 2003**

State	All Warehouses		
	Feb 28, 2002	Jan 31, 2003	Feb 28 2003
	<i>1,000 Pounds</i>	<i>1,000 Pounds</i>	
CA	42,314	42,877	29,008
MI	199,318	110,495	99,044
N ENG	17,588	19,546	14,899
NY	199,584	198,198	160,524
OH	7,240	6,060	3,415
OR	24,161	20,680	21,629
PA	245,040	165,953	136,825
VA	94,851	98,141	79,771
WA	2,032,128	2,846,046	2,350,000
WV	59,693	36,068	47,121
Other States	35,670	32,867	22,312
US	2,957,587	3,576,931	2,964,548

Survey Procedures: Questionnaires are mailed about the 24th of each month to all operators on the list of approximately 1,400 public and private cold storage warehouses. In addition, apple data are obtained from special surveys and other sources (State Departments of Agriculture, U.S. Apple Association, etc.). All survey data represent stocks as of the end of the month.

Data are collected from warehouses artificially cooled to a temperature of 50 degrees Fahrenheit or lower, and whose food products are normally stored for 30 days or more. All food items in these facilities are reported regardless of the number of days stored at the time of the report. Also included are specialized storage facilities meeting the 30 day requirement, such as fruit houses, dairy manufacturing plants, frozen fruit, fruit juice, and vegetable processors, and poultry and meat packing plants. Excluded are stocks in space maintained by wholesalers, jobbers, distributors, chain stores, locker plants containing individual lockers, meat packer branch houses, and frozen food processors whose entire inventories are turned over more than once a month.

Estimating Procedures: Data for reporting firms are added to estimates for non-reporting firms to obtain regional and National totals. Estimates for non-reporting firms are obtained by multiplying the previous month's figure by a percent change from the previous month. The percent change is calculated for each item from totals of the current and previous month summed from firms that reported both months.

Revision Policy: Data are revised the following month based on late reports or corrected data. Final figures are published in the annual summary in February of the following year.

Reliability: Reports are received from 900 firms each month which represent about 70 percent of the total capacity. Firms that are not on the list or firms who have never reported are not represented in the data. Monthly data can vary due to different firms reporting month to month. Survey data are also subject to non-sampling errors such as omissions and mistakes in reporting and in processing the data. While these errors cannot be measured directly, they are minimized by carefully reviewing all reported data for consistency and reasonableness.

The next "Cold Storage" report will be released at 3 p.m. ET on April 21, 2003.

The United States Department of Agriculture (USDA) prohibits discrimination in all its programs on the basis of race, color, national origin, gender, religion, age, disability, political beliefs, sexual orientation, and marital or family status. (Not all prohibited bases apply to all programs.) Persons with disabilities who require alternative means for communication of program information (braille, large print, audiotape, etc.) should contact the USDA's TARGET Center at 202-720-2600 (voice and TDD).

To file a complaint of discrimination, write USDA, Director, Office of Civil Rights, Room 326-W, Whitten Building, 1400 Independence Avenue, SW, Washington, D.C., 20250-9410, or call 202-720-5964 (voice or TDD). USDA is an equal opportunity provider and employer.

ACCESS TO REPORTS!!

For your convenience, there are several ways to obtain NASS reports, data products, and services:

INTERNET ACCESS

All NASS reports are available free of charge on the worldwide Internet. For access, connect to the Internet and go to the NASS Home Page at: <http://www.usda.gov/nass/>. Select "Today's Reports" or Publications and then Reports Calendar or Publications and then Search, by Title or Subject.

E-MAIL SUBSCRIPTION

All NASS reports are available by subscription free of charge direct to your e-mail address. Starting with the NASS Home Page at <http://www.usda.gov/nass/>, click on **Publications**, then click on the **Subscribe by E-mail** button which takes you to the page describing e-mail delivery of reports. Finally, click on **Go to the Subscription Page** and follow the instructions.

AUTOFAX ACCESS

NASSFax service is available for some reports from your fax machine. Please call 202-720-2000, using the handset attached to your fax. Respond to the voice prompts. Document 0411 is a list of available reports.

PRINTED REPORTS OR DATA PRODUCTS

CALL OUR TOLL-FREE ORDER DESK: 800-999-6779 (U.S. and Canada)
Other areas, please call 703-605-6220 FAX: 703-605-6900
(Visa, MasterCard, check, or money order acceptable for payment.)

ASSISTANCE

For **assistance** with general agricultural statistics or further information about NASS or its products or services, contact the **Agricultural Statistics Hotline** at **800-727-9540**, 7:30 a.m. to 4:00 p.m. ET, or e-mail: nass@nass.usda.gov.
