



# Cold Storage

---

Released April 21, 2003, by the National Agricultural Statistics Service (NASS), Agricultural Statistics Board, U.S. Department of Agriculture. For information on "Cold Storage" call Barry Adams at (202) 720-8784, office hours 7:00 a.m. to 4:30 p.m. ET.

## HIGHLIGHTS

**Frozen food stocks** in refrigerated warehouses on March 31, 2003 were greater than year earlier levels for cheese, butter, frozen eggs, total turkey, and orange juice.

Butter stocks were 2 percent above February 2003 and 67 percent above a year ago.

**Total red meat supplies** in freezers were 4 percent below February 28, 2003 and 2 percent below March 2002. Frozen pork stocks were 1 percent above last month but 1 percent below last year. Stocks of pork bellies were 11 percent above last month but 30 percent below March 2002 stocks.

**Total frozen poultry supplies** on March 31, 2003 were up 3 percent from last month but down 7 percent from last year's level. Total stocks of chicken were down 4 percent from last month and down 20 percent from last year's level. Total pounds of turkey in freezers increased 14 percent from last month and 16 percent above last year.

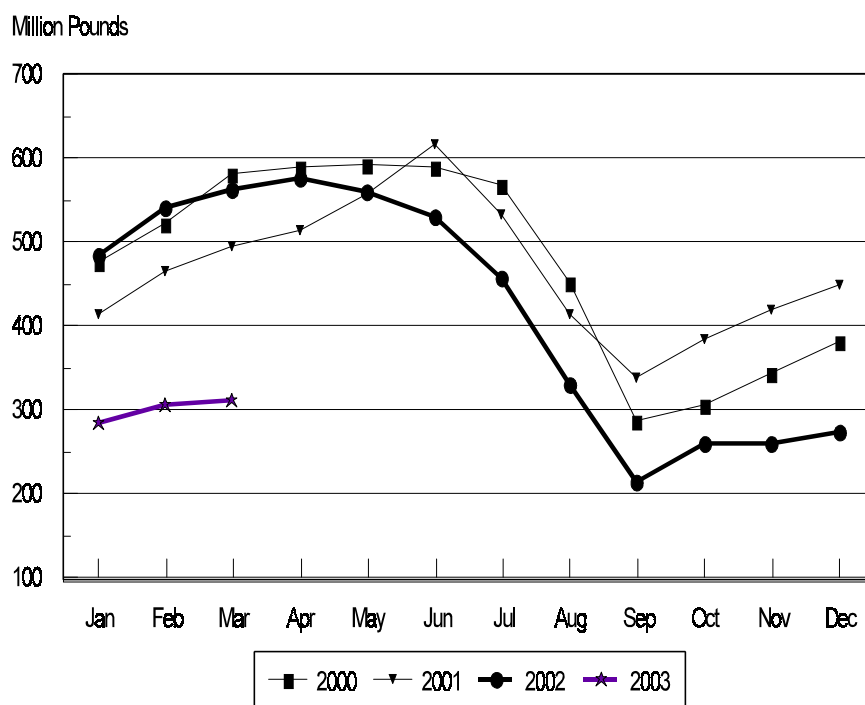
**Public cooler occupancy** on March 31, 2003, was at 41 percent of capacity, down 1 point from last year. Public freezer occupancy, was at 52 percent, up 3 points from last year.

This page is intentionally blank.

## Table of Contents

	Page
Stocks in Cold Storage: By Commodity, United States, March 2003 .....	4
Stocks in Cold Storage: By Commodity, Region, and United States, February 28, 2003 .....	8
Stocks in Cold Storage: By Commodity, Region, and United States, March 31, 2003 .....	12
Public General Warehouses: Cold Storage Space Occupied by Region and United States, March 2003 .....	16
Apples in Cold Storage: By State and United States, March 31, 2002 and 2003 .....	17
Survey and Estimating Procedures, Revision Policy and Reliability .....	18

Shelled Peanuts  
Cold Storage Stocks, 2000-2003  
United States



**Stocks in Cold Storage: By Commodity,  
United States, March 2003**

Commodity	Stocks in All Warehouses			Percent of		Public Warehouse Stocks
	Mar 31, 2002	Feb 28, 2003	Mar 31, 2003	Mar 2002	Feb 2003	Mar 31, 2003
	<i>1,000 Pounds</i>	<i>1,000 Pounds</i>	<i>1,000 Pounds</i>	<i>Percent</i>	<i>Percent</i>	<i>1,000 Lbs</i>
Fresh Fruit						
Apples						
Regular Storage	187,258	270,100	137,362	73	51	
Controlled Atmosphere	2,033,890	2,694,314	2,025,909	100	75	
Total	2,221,148	2,964,414	2,163,271	97	73	957
Pears						
Bartlett	26	73	59	227	81	
Other Varieties	135,727	191,166	134,590	99	70	
Total	135,753	191,239	134,649	99	70	66
Nuts						
Shelled						
Peanuts	562,626	306,156	311,946	55	102	
Pecans	45,795	39,153	39,974	87	102	
Other Shelled	128,923	137,283	151,712	118	111	
Total	737,344	482,592	503,632	68	104	203,950
In-Shell						
Peanuts	17,361	15,556	16,542	95	106	
Pecans	181,333	105,471	94,082	52	89	
Other In-Shell	11,447	7,311	9,429	82	129	
Total	210,141	128,338	120,053	57	94	39,088
Dairy Products						
Butter, Total	145,160	238,197	242,138	167	102	225,470
(Government Owned)	1,323	747	755	57	101	
Natural Cheese						
American, Total	498,290	538,314	535,036	107	99	
(Government Owned)	733	368	1,602	219	435	
Swiss	12,880	23,149	23,647	184	102	
Other Natural Cheese	220,552	207,043	211,244	96	102	
Total	731,722	768,506	769,927	105	100	433,961
Eggs, Frozen						
Whites	1,561	2,571	2,519	161	98	
Yolks	906	1,169	1,405	155	120	
Whole & Mixed	6,260	9,463	9,969	159	105	
Unclassified	2,942	3,924	3,256	111	83	
Total	11,669	17,127	17,149	147	100	16,652
Frozen Poultry						
Chicken						
Broilers, Fryers						
Roasters (Whole)	29,307	24,854	22,710	77	91	
Hens, Mature Chickens	4,924	4,465	5,107	104	114	
Other	774,373	646,043	618,541	80	96	
Total Chicken	808,604	675,362	646,358	80	96	

See footnote(s) at end of table.

--continued

**Stocks in Cold Storage: By Commodity,  
United States, March 2003**

Commodity	Stocks in All Warehouses			Percent of		Public Warehouse Stocks
	Mar 31, 2002	Feb 28, 2003	Mar 31, 2003	Mar 2002	Feb 2003	Mar 31, 2003
	<i>1,000 Pounds</i>	<i>1,000 Pounds</i>	<i>1,000 Pounds</i>	<i>Percent</i>	<i>Percent</i>	<i>1,000 Lbs</i>
Turkeys						
Toms (Whole Carcasses)	126,315	101,779	132,916	105	131	
Hens (Whole Carcasses)	95,572	70,112	81,837	86	117	
Whole Turkeys	221,887	171,891	214,753	97	125	
Other Turkey	235,678	297,051	317,794	135	107	
Total Turkey	457,565	468,942	532,547	116	114	404,891
Ducks	6,162	5,135	5,819	94	113	
Total Poultry	1,272,331	1,149,439	1,184,724	93	103	1,016,837
Frozen Fruit						
Apples	70,656	56,746	60,549	86	107	
Apricots	3,815	3,447	3,096	81	90	
Blackberries, Total	19,930	17,252	16,711	84	97	
IQF	12,342	11,261	10,998	89	98	
Pails and Tubs	2,478	1,449	1,361	55	94	
Barrels, 400 lbs net	3,981	3,953	3,825	96	97	
Concentrate	1,129	589	527	47	89	
Blueberries	75,051	65,838	56,493	75	86	
Boysenberries	2,335	2,596	2,001	86	77	
Cherries, Tart (RTP)	106,151	38,771	34,971	33	90	
Cherries, Tart (Juice)	1,872	1,594	1,437	77	90	
Cherries, Sweet	10,640	6,818	6,261	59	92	
Grapes	3,805	6,069	5,593	147	92	
Peaches	43,959	52,310	44,590	101	85	
Raspberries, Black	2,257	1,939	1,788	79	92	
Raspberries, Red, Total	31,849	38,017	32,048	101	84	
IQF	11,944	14,082	12,537	105	89	
Pails and Tubs	7,181	8,821	7,317	102	83	
Barrels, 400 lbs net	11,595	14,206	11,356	98	80	
Concentrate	1,129	908	838	74	92	
Strawberries, Total	150,017	203,663	183,968	123	90	
IQF and Poly	98,112	125,114	113,760	116	91	
Pails and Tubs	33,872	46,561	40,668	120	87	
Barrels and Drums	11,348	25,049	21,703	191	87	
Juice Stock	6,685	6,939	7,837	117	113	
Other Frozen Fruit	337,088	361,950	330,953	98	91	
Total	858,986	857,010	780,459	91	91	632,611
Frozen Juice						
Orange Juice Conc. <sup>1</sup>	1,794,375	1,833,399	1,856,689	103	101	
(Gallon Equivalent)	181,323	185,267	187,620			
Other Juice Concentrate	308,279	252,236	260,362	84	103	
Total	2,102,654	2,085,635	2,117,051	101	102	209,190

See footnote(s) at end of table.

--continued

**Stocks in Cold Storage: By Commodity,  
United States, March 2003**

Commodity	Stocks in All Warehouses			Percent of		Public Warehouse Stocks
	Mar 31, 2002	Feb 28, 2003	Mar 31, 2003	Mar 2002	Feb 2003	Mar 31, 2003
	<i>1,000 Pounds</i>	<i>1,000 Pounds</i>	<i>1,000 Pounds</i>	<i>Percent</i>	<i>Percent</i>	<i>1,000 Lbs</i>
Frozen Vegetables						
Asparagus	7,698	5,877	5,529	72	94	
Limas, Fordhook	9,032	8,888	7,652	85	86	
Limas, Baby	40,856	40,034	33,616	82	84	
Green Beans, Reg. Cut	89,335	133,125	113,321	127	85	
Green Beans, Fr. Style	13,304	15,934	13,198	99	83	
Broccoli, Spears	51,381	52,064	51,693	101	99	
Broccoli, Chopped & Cut	72,073	72,673	75,536	105	104	
Brussels Sprouts	14,429	17,037	14,724	102	86	
Carrots, Diced	71,754	70,047	57,668	80	82	
Carrots, Other	124,741	118,043	105,662	85	90	
Cauliflower	33,253	30,923	27,553	83	89	
Corn, Cut	255,128	329,505	279,327	109	85	
Corn, Cob	173,544	224,601	199,450	115	89	
Mixed Vegetables	49,273	42,935	42,816	87	100	
Okra	28,151	36,922	32,729	116	89	
Onion Rings	6,803	6,702	6,505	96	97	
Onions, Other	28,674	31,424	31,285	109	100	
Blackeye Peas	6,332	5,278	4,512	71	85	
Green Peas	149,678	114,479	87,222	58	76	
Peas & Carrots Mixed	7,581	7,096	6,681	88	94	
Spinach	80,447	57,666	76,630	95	133	
Squash, Summer/Zucchini	34,785	37,171	33,535	96	90	
Southern Greens	27,421	23,951	25,347	92	106	
Other Vegetables	277,155	289,291	278,438	100	96	
Total	1,652,828	1,771,666	1,610,629	97	91	1,209,254
Potatoes						
French Fries	1,005,122	949,117	926,886	92	98	
Other Frozen	266,267	260,483	267,554	100	103	
Total	1,271,389	1,209,600	1,194,440	94	99	893,422

See footnote(s) at end of table.

--continued

**Stocks in Cold Storage: By Commodity,  
United States, March 2003 (Continued)**

Commodity	Stocks in All Warehouses			Percent of		Public Warehouse Stocks
	Mar 31, 2002	Feb 28, 2003	Mar 31, 2003	Mar 2002	Feb 2003	Mar 31, 2003
	<i>1,000 Pounds</i>	<i>1,000 Pounds</i>	<i>1,000 Pounds</i>	<i>Percent</i>	<i>Percent</i>	<i>1,000 Lbs</i>
<b>Meat</b>						
Frozen Beef						
Boneless <sup>2</sup>	359,552	380,445	342,963	95	90	
Beef Cuts <sup>3</sup>	50,940	61,691	58,123	114	94	
Total	410,492	442,136	401,086	98	91	398,634
(Government Owned)	2,248	2,487	2,476	110	100	
Frozen Pork						
Picnics, Bone-in	14,297	11,547	12,087	85	105	
Hams, Total	73,043	89,154	85,973	118	96	81,904
Bone-in	30,143	49,100	43,054	143	88	42,339
Boneless <sup>4</sup>	42,900	40,054	42,919	100	107	39,565
Bellies	60,721	38,278	42,516	70	111	
Loins, Total	40,063	44,216	39,795	99	90	36,644
Bone-in	18,322	22,794	20,261	111	89	
Boneless <sup>5</sup>	21,741	21,422	19,534	90	91	
Ribs <sup>6</sup>	86,324	97,076	96,459	112	99	
Butts	16,339	17,579	17,265	106	98	
Trimming <sup>7</sup>	69,371	55,225	58,305	84	106	
Other <sup>8</sup>	83,424	76,945	78,283	94	102	
Variety Meats <sup>9</sup>	51,371	43,687	45,883	89	105	
Unclassified <sup>10</sup>	36,500	45,999	47,863	131	104	
Total	531,453	519,706	524,429	99	101	478,291
(Government Owned)	1,471	1,370	1,082	74	79	
Other						
Veal	3,981	6,111	5,992	151	98	
Lamb & Mutton	10,528	4,063	3,928	37	97	
Total	14,509	10,174	9,920	68	98	9,516
Canned						
Canned Hams	5,053	5,842	7,775	154	133	
Other Canned Meat	395	665	643	163	97	
Total	5,448	6,507	8,418	155	129	8,314
Total	961,902	978,523	943,853	98	96	894,755
<b>Miscellaneous</b>						
Cooler	699,921	658,146	603,016	86	92	274,953
Freezer	2,145,395	2,207,076	2,261,068	105	102	2,195,136
Total	2,845,316	2,865,222	2,864,084	101	100	2,470,089
<b>Commodities</b>						
Stored in Coolers	4,754,514	5,211,539	4,316,565	91	83	1,091,296
Stored in Freezers	10,403,829	10,495,969	10,329,494	99	98	7,285,013
Total	15,158,343	15,707,508	14,646,059	97	93	8,376,309

<sup>1</sup> Adjusted to 42.0 degrees Brix equivalent (9.896 pounds per gallon).

<sup>2</sup> Includes all boxed boneless beef, such as ground beef, roasts, steaks, loins, strips, rounds, trimmings, etc. Variety meats (edible offal), such as tongues, livers, hearts, kidneys, and other organs removed from slaughtered beef, are included as miscellaneous freezer stocks.

<sup>3</sup> Includes all boxed primal beef cuts, bone-in.

<sup>4</sup> Includes full ham, bone removed and individual muscles separated.

<sup>5</sup> Includes pork tenderloins.

<sup>6</sup> Includes spareribs and backribs.

<sup>7</sup> Includes 42% regular trimmings, 72% special trimmings, boneless picnic meat, jowls, neckbone trimmings, blade, cheek, head, and shank meat, etc. Packaged bacon, sausage, and processed items, such as hot dogs and luncheon meats, are included in miscellaneous cooler or freezer stocks.

<sup>8</sup> Includes ears, tails, feet, neckbones and snouts.

<sup>9</sup> Includes tongues, kidneys, livers, stomachs, hearts, chitterlings, salivary glands, and other organs removed from slaughtered hogs.

<sup>10</sup> Includes product unable to be classified elsewhere in this report.

**Stocks in Cold Storage: By Commodity, Region,  
and United States, February 28, 2003**

Commodity	New England	Middle Atlantic	East North Central	West North Central	South Atlantic
	<i>1,000 Pounds</i>	<i>1,000 Pounds</i>	<i>1,000 Pounds</i>	<i>1,000 Pounds</i>	<i>1,000 Pounds</i>
Total Fresh Apples	14,899	297,329	104,569		135,832
Nuts					
Shelled					
Peanuts		2	21	18	174,375
Pecans <sup>1</sup>		62			14,954
In-Shell					
Pecans <sup>1</sup>					19,245
Dairy Products					
Natural Cheese					
American, Total	21,737	58,459	221,498	124,574	104
Other Natural Cheese	258	18,624	118,335	53,326	1,856
Frozen Poultry					
Chicken					
Broilers, Fryers					
Roasters (Whole)		933	128	1,052	5,819
Hens, Mature Chickens	12	268	284	105	1,821
Other	1,539	17,955	14,203	23,801	199,724
Total Chicken	1,551	19,156	14,615	24,958	207,364
Turkeys					
Whole Turkeys	1,181	4,808	1,743	50,426	40,032
Other Turkey	767	11,150	22,086	69,031	136,800
Total Turkey	1,948	15,958	23,829	119,457	176,832
Ducks	2	441	4,512		30
Total Poultry	3,501	35,555	42,956	144,415	384,226
Frozen Fruit					
Apples	61	14,564	31,554	172	1,042
Blueberries	13,784	4,530	30,705	1,497	1,642
Cherries, Tart (RTP)	6	3,570	26,030	767	589
Cherries, Sweet		316	2,886	600	46
Peaches	24	2,489	5,586	1,989	513
Raspberries, Red	161	1,122	1,260	81	103
Strawberries, Total	54	4,160	3,940	620	909
Other Frozen Fruit	33,316	12,177	192,624	2,499	5,500

See footnote(s) at end of table.

--continued



**Stocks in Cold Storage: By Commodity, Region,  
and United States, February 28, 2003 (continued)**

Commodity	East South Central	West South Central	Mountain	Pacific	US Total
	<i>1,000 Pounds</i>	<i>1,000 Pounds</i>	<i>1,000 Pounds</i>	<i>1,000 Pounds</i>	<i>1,000 Pounds</i>
Total Fresh Apples		4,178	6,970	2,400,637	2,964,414
Nuts					
Shelled					
Peanuts	28,965	101,760	91	924	306,156
Pecans <sup>1</sup>	957	23,047		133	39,153
In-Shell					
Pecans <sup>1</sup>	2,727	83,499			105,471
Dairy Products					
Natural Cheese					
American, Total	433	1,661	13,866	95,982	538,314
Other Natural Cheese	177	246	1,934	12,287	207,043
Frozen Poultry					
Chicken					
Broilers, Fryers					
Roasters (Whole)	2,884	10,948	365	2,725	24,854
Hens, Mature Chickens	425	601		949	4,465
Other	117,255	224,061	2,026	45,479	646,043
Total Chicken	120,564	235,610	2,391	49,153	675,362
Turkeys					
Whole Turkeys	656	34,232	9,821	28,992	171,891
Other Turkey	1,078	30,742	10,611	14,786	297,051
Total Turkey	1,734	64,974	20,432	43,778	468,942
Ducks		47	24	79	5,135
Total Poultry	122,298	300,631	22,847	93,010	1,149,439
Frozen Fruit					
Apples	104	1,399	220	7,630	56,746
Blueberries	111	741	287	12,541	65,838
Cherries, Tart (RTP)	43	1,172	844	5,750	38,771
Cherries, Sweet	1	45	961	1,963	6,818
Peaches	57	1,393	158	40,101	52,310
Raspberries, Red	165	485	2	34,638	38,017
Strawberries, Total	892	19,431	207	173,450	203,663
Other Frozen Fruit	162	15,617	5,662	94,393	361,950

See footnote(s) at end of table.

--continued

**Stocks in Cold Storage: By Commodity, Region,  
and United States, February 28, 2003 (continued)**

Commodity	New England	Middle Atlantic	East North Central	West North Central	South Atlantic
	<i>1,000 Pounds</i>	<i>1,000 Pounds</i>	<i>1,000 Pounds</i>	<i>1,000 Pounds</i>	<i>1,000 Pounds</i>
Frozen Juice					
Orange Juice Conc. <sup>2</sup>	183		602	138	1,756,442
Other Juice Concentrate	574	30,374	11,095	1,738	102,196
Frozen Vegetables <sup>3</sup>					
Asparagus		927	1,784	34	503
Limas, Fordhook		1,466	653	21	462
Limas, Baby		7,774	2,448	454	9,937
Green Beans, Reg. Cut		33,934	31,350	471	3,588
Green Beans, Fr. Style		5,272	3,598	87	446
Broccoli, Spears		7,386	5,028	6	2,524
Broccoli, Chopped & Cut		4,149	7,367	7,119	5,415
Brussels Sprouts		2,259	1,482	1	1,700
Carrots, Diced		7,796	30,369	282	1,398
Carrots, Other		12,133	26,346	401	4,164
Cauliflower		2,248	3,309	50	938
Corn, Cut		30,535	64,704	20,297	3,772
Corn, Cob		15,521	28,082	21,749	4,235
Mixed Vegetables		3,949	9,802	168	1,650
Okra		1,637	568	5,485	6,576
Onion Rings		314	3,526	633	565
Onions, Other		2,263	4,374	246	3,155
Blackeye Peas		281	57	24	3,691
Green Peas		24,171	21,202	6,891	4,888
Peas & Carrots Mixed		916	1,372	120	461
Spinach		11,944	3,548	190	3,319
Squash, Summer/Zucchini		4,560	9,223	15	4,041
Southern Greens		2,753	1,203	82	6,735
Other Vegetables		37,950	35,866	11,462	21,096
Potatoes					
French Fries	35,287	32,476	54,841	116,325	34,059
Other Frozen	5,542	13,401	30,964	8,568	3,688
Meat					
Frozen Beef					
Boneless <sup>4</sup>	6,021	49,310	46,010	131,079	20,560
Beef Cuts <sup>5</sup>	4,200	2,203	10,272	11,039	2,857
Frozen Pork					
Ribs <sup>6</sup>	441	2,055	34,686	38,213	10,284
Trimmings <sup>7</sup>	196	1,260	10,859	33,011	2,220
Other <sup>8</sup>	2,081	960	12,137	36,324	15,599
Other					
Veal		1,466	864	221	46
Lamb & Mutton	4	571	1,133	404	294

See footnote(s) at end of table.

--continued

**Stocks in Cold Storage: By Commodity, Region,  
and United States, February 28, 2003 (continued)**

Commodity	East South Central	West South Central	Mountain	Pacific	US Total
	<i>1,000 Pounds</i>	<i>1,000 Pounds</i>	<i>1,000 Pounds</i>	<i>1,000 Pounds</i>	<i>1,000 Pounds</i>
Frozen Juice					
Orange Juice Concentrate	39	7,598	121	68,276	1,833,399
Other Juice Concentrate	175	22,026	389	83,669	252,236
Frozen Vegetables <sup>3</sup>					
Asparagus		583	11	2,035	5,877
Limas, Fordhook		388	2	5,896	8,888
Limas, Baby		1,293	3,100	15,028	40,034
Green Beans, Reg. Cut		1,460	41	62,281	133,125
Green Beans, Fr. Style		404	91	6,036	15,934
Broccoli, Spears		18,800	101	18,219	52,064
Broccoli, Chopped & Cut		23,843	621	24,159	72,673
Brussels Sprouts		344	2	11,249	17,037
Carrots, Diced		1,341	8	28,853	70,047
Carrots, Other		7,792	583	66,624	118,043
Cauliflower		8,273	11	16,094	30,923
Corn, Cut		1,936	3,888	204,373	329,505
Corn, Cob		1,284	47	153,683	224,601
Mixed Vegetables		5,741	153	21,472	42,935
Okra		22,117		539	36,922
Onion Rings		746	425	493	6,702
Onions, Other		2,512	3,596	15,278	31,424
Blackeye Peas		1,014		211	5,278
Green Peas		2,972	6,642	47,713	114,479
Peas & Carrots Mixed		893	3	3,331	7,096
Spinach		19,475	21	19,169	57,666
Squash, Summer/Zucchini		5,349	391	13,592	37,171
Southern Greens		11,963		1,215	23,951
Other Vegetables		40,785	7,743	134,389	289,291
Potatoes					
French Fries	2,191	10,695	199,080	464,163	949,117
Other Frozen	684	24,140	44,639	128,857	260,483
Meat					
Frozen Beef					
Boneless <sup>4</sup>	3,943	70,582	9,942	42,998	380,445
Beef Cuts <sup>5</sup>	3,825	7,185	14,880	5,230	61,691
Frozen Pork					
Ribs <sup>6</sup>	4,359	4,876	145	2,017	97,076
Trimming <sup>7</sup>	223	6,575	18	863	55,225
Other <sup>8</sup>	3,282	3,466	196	2,900	76,945
Other					
Veal	170	146	8	3,190	6,111
Lamb & Mutton	8	157	110	1,382	4,063

<sup>1</sup> East North Central combined with South Atlantic. Mountain and West North Central combined with West South Central.

<sup>2</sup> Middle Atlantic combined with South Atlantic.

<sup>3</sup> New England combined with Middle Atlantic. East South Central combined with South Atlantic.

<sup>4</sup> Includes all boxed boneless beef, such as ground beef, roasts, steaks, loins, strips, rounds, trimmings, etc. Variety meats (edible offal), such as tongues, livers, hearts, kidneys, and other organs removed from slaughtered beef, are included as miscellaneous freezer stocks.

<sup>5</sup> Includes all boxed primal beef cuts, bone-in.

<sup>6</sup> Includes spareribs and backribs.

<sup>7</sup> Includes 42% regular trimmings, 72% special trimmings, boneless picnic meat, jowls, neckbone trimmings, blade, cheek, head, and shank meat, etc. Packaged bacon, sausage, and processed items, such as hot dogs and luncheon meats, are included in miscellaneous cooler or freezer stocks.

<sup>8</sup> Includes ears, tails, feet, neckbones and snouts.

<sup>9</sup> Includes tongues, kidneys, livers, stomachs, hearts, chitterlings, salivary glands, and other organs removed from slaughtered hogs.

<sup>10</sup> Includes product unable to be classified elsewhere in this report.

**Stocks in Cold Storage: By Commodity, Region,  
and United States, March 31, 2003**

Commodity	New England	Middle Atlantic	East North Central	West North Central	South Atlantic
	<i>1,000 Pounds</i>	<i>1,000 Pounds</i>	<i>1,000 Pounds</i>	<i>1,000 Pounds</i>	<i>1,000 Pounds</i>
Total Fresh Apples	10,347	230,600	61,813		99,195
Nuts					
Shelled					
Peanuts		2	22	19	179,503
Pecans <sup>1</sup>		73			15,859
In-Shell					
Pecans <sup>1</sup>					16,509
Dairy Products					
Natural Cheese					
American, Total	21,175	59,548	216,690	123,432	118
Other Natural Cheese	276	17,448	122,782	54,018	1,883
Frozen Poultry					
Chicken					
Broilers, Fryers					
Roasters (Whole)		905	148	1,001	5,685
Hens, Mature Chickens	13	231	268	114	1,957
Other	1,694	16,163	15,604	24,640	188,703
Total Chicken	1,707	17,299	16,020	25,755	196,345
Turkeys					
Whole Turkeys	964	4,535	2,296	60,239	52,646
Other Turkey	749	11,236	24,923	73,480	147,059
Total Turkey	1,713	15,771	27,219	133,719	199,705
Ducks	1	427	5,210		28
Total Poultry	3,421	33,497	48,449	159,474	396,078
Frozen Fruit					
Apples	61	18,450	31,265	202	1,109
Blueberries	11,905	4,122	26,062	1,392	1,545
Cherries, Tart (RTP)	6	2,750	23,580	756	638
Cherries, Sweet		350	2,617	491	39
Peaches	20	2,335	5,439	1,970	412
Raspberries, Red	140	1,025	1,078	86	118
Strawberries, Total	100	4,423	4,109	693	950
Other Frozen Fruit	44,023	13,130	166,961	2,503	4,572

See footnote(s) at end of table.

--continued

**Stocks in Cold Storage: By Commodity, Region,  
and United States, March 31, 2003 (continued)**

Commodity	East South Central	West South Central	Mountain	Pacific	US Total
	<i>1,000 Pounds</i>	<i>1,000 Pounds</i>	<i>1,000 Pounds</i>	<i>1,000 Pounds</i>	<i>1,000 Pounds</i>
Total Fresh Apples		3,638	3,849	1,753,829	2,163,271
Nuts					
Shelled					
Peanuts	27,046	104,927	89	338	311,946
Pecans <sup>1</sup>	1,007	22,902		133	39,974
In-Shell					
Pecans <sup>1</sup>	2,241	75,332			94,082
Dairy Products					
Natural Cheese					
American, Total	230	1,592	15,048	97,203	535,036
Other Natural Cheese	206	283	1,932	12,416	211,244
Frozen Poultry					
Chicken					
Broilers, Fryers					
Roasters (Whole)	2,062	10,016	379	2,514	22,710
Hens, Mature Chickens	410	1,131	35	948	5,107
Other	108,530	217,805	2,359	43,043	618,541
Total Chicken	111,002	228,952	2,773	46,505	646,358
Turkeys					
Whole Turkeys	698	47,353	10,101	35,921	214,753
Other Turkey	1,248	32,940	9,808	16,351	317,794
Total Turkey	1,946	80,293	19,909	52,272	532,547
Ducks		48	51	54	5,819
Total Poultry	112,948	309,293	22,733	98,831	1,184,724
Frozen Fruit					
Apples	91	1,453	214	7,704	60,549
Blueberries	139	594	234	10,500	56,493
Cherries, Tart (RTP)	8	1,106	998	5,129	34,971
Cherries, Sweet	1	80	779	1,904	6,261
Peaches	42	1,350	117	32,905	44,590
Raspberries, Red	130	414	1	29,056	32,048
Strawberries, Total	849	21,527	242	151,075	183,968
Other Frozen Fruit	151	14,601	6,030	78,982	330,953

See footnote(s) at end of table.

--continued

**Stocks in Cold Storage: By Commodity, Region,  
and United States, March 31, 2003 (continued)**

Commodity	New England	Middle Atlantic	East North Central	West North Central	South Atlantic
	<i>1,000 Pounds</i>	<i>1,000 Pounds</i>	<i>1,000 Pounds</i>	<i>1,000 Pounds</i>	<i>1,000 Pounds</i>
Frozen Juice					
Orange Juice Conc. <sup>2</sup>	193		962	133	1,776,466
Other Juice Concentrate	640	27,467	10,244	2,277	112,538
Frozen Vegetables <sup>3</sup>					
Asparagus		861	1,774	24	443
Limas, Fordhook		1,432	596	12	365
Limas, Baby		7,056	2,422	450	7,514
Green Beans, Reg. Cut		30,368	25,493	243	3,349
Green Beans, Fr. Style		4,263	3,099	52	371
Broccoli, Spears		8,219	4,872	3	2,652
Broccoli, Chopped & Cut		3,963	7,126	5,929	5,524
Brussels Sprouts		2,181	1,289	8	944
Carrots, Diced		6,130	26,528	314	1,132
Carrots, Other		10,781	22,508	297	3,530
Cauliflower		1,924	3,399	31	763
Corn, Cut		27,213	56,634	17,682	4,165
Corn, Cob		14,431	23,652	18,477	3,816
Mixed Vegetables		4,634	8,476	153	1,959
Okra		1,530	541	4,482	7,031
Onion Rings		331	3,057	930	552
Onions, Other		3,383	4,064	335	2,871
Blackeye Peas		167	54	20	3,221
Green Peas		19,098	16,911	5,580	4,358
Peas & Carrots Mixed		1,058	1,274	89	462
Spinach		10,475	3,943	199	4,172
Squash, Summer/Zucchini		4,213	8,007	78	3,731
Southern Greens		2,487	966	73	6,616
Other Vegetables		37,727	32,722	10,808	21,186
Potatoes					
French Fries	31,190	31,328	58,360	106,657	26,661
Other Frozen	4,532	16,645	36,277	8,139	3,572
Meat					
Frozen Beef					
Boneless <sup>4</sup>	1,911	42,593	40,933	119,623	20,426
Beef Cuts <sup>5</sup>	3,573	2,192	8,304	11,422	3,277
Frozen Pork					
Ribs <sup>6</sup>	438	2,217	34,110	36,102	9,748
Trimmings <sup>7</sup>	200	1,291	12,732	33,794	1,903
Other <sup>8</sup>	2,097	874	12,840	37,571	15,426
Other					
Veal		1,470	1,103	186	41
Lamb & Mutton	3	443	993	441	284

See footnote(s) at end of table.

--continued

**Stocks in Cold Storage: By Commodity, Region,  
and United States, March 31, 2003 (continued)**

Commodity	East South Central	West South Central	Mountain	Pacific	US Total
	<i>1,000 Pounds</i>	<i>1,000 Pounds</i>	<i>1,000 Pounds</i>	<i>1,000 Pounds</i>	<i>1,000 Pounds</i>
Frozen Juice					
Orange Juice Concentrate	85	7,449	81	71,320	1,856,689
Other Juice Concentrate	138	21,261	354	85,443	260,362
Frozen Vegetables <sup>3</sup>					
Asparagus		629	3	1,795	5,529
Limas, Fordhook		406	2	4,839	7,652
Limas, Baby		1,096	2,790	12,288	33,616
Green Beans, Reg. Cut		1,154	4	52,710	113,321
Green Beans, Fr. Style		423	81	4,909	13,198
Broccoli, Spears		18,833	102	17,012	51,693
Broccoli, Chopped & Cut		27,825	525	24,644	75,536
Brussels Sprouts		408	2	9,892	14,724
Carrots, Diced		1,935	11	21,618	57,668
Carrots, Other		9,472	526	58,548	105,662
Cauliflower		7,531	8	13,897	27,553
Corn, Cut		1,899	3,903	167,831	279,327
Corn, Cob		1,158	30	137,886	199,450
Mixed Vegetables		5,891	129	21,574	42,816
Okra		18,557		588	32,729
Onion Rings		682	549	404	6,505
Onions, Other		2,214	3,621	14,797	31,285
Blackeye Peas		878		172	4,512
Green Peas		2,390	4,450	34,435	87,222
Peas & Carrots Mixed		867	24	2,907	6,681
Spinach		20,879	34	36,928	76,630
Squash, Summer/Zucchini		4,515	434	12,557	33,535
Southern Greens		14,083		1,122	25,347
Other Vegetables		39,784	7,432	128,779	278,438
Potatoes					
French Fries	2,820	10,425	205,422	454,023	926,886
Other Frozen	330	28,418	42,198	127,443	267,554
Meat					
Frozen Beef					
Boneless <sup>4</sup>	4,029	65,807	7,425	40,216	342,963
Beef Cuts <sup>5</sup>	3,623	7,250	13,161	5,321	58,123
Frozen Pork					
Ribs <sup>6</sup>	5,349	5,972	313	2,210	96,459
Trimming <sup>7</sup>	318	7,151	14	902	58,305
Other <sup>8</sup>	3,452	2,841	190	2,992	78,283
Other					
Veal	23	137	1	3,031	5,992
Lamb & Mutton	5	148	52	1,559	3,928

<sup>1</sup> East North Central combined with South Atlantic. Mountain and West North Central Combined with West South Central.

<sup>2</sup> Middle Atlantic combined with South Atlantic.

<sup>3</sup> New England combined with Middle Atlantic. East South Central combined with South Atlantic.

<sup>4</sup> Includes all boxed boneless beef, such as ground beef, roasts, steaks, loins, strips, rounds, trimmings, etc. Variety meats (edible offal), such as tongues, livers, hearts, kidneys, and other organs removed from slaughtered beef, are included as miscellaneous freezer stocks.

<sup>5</sup> Includes all boxed primal beef cuts, bone-in.

<sup>6</sup> Includes spareribs and backribs.

<sup>7</sup> Includes 42% regular trimmings, 72% special trimmings, boneless picnic meat, jowls, neckbone trimmings, blade, cheek, head, and shank meat, etc. Packaged bacon, sausage, and processed items, such as hot dogs and luncheon meats, are included in miscellaneous cooler or freezer stocks.

<sup>8</sup> Includes ears, tails, feet, neckbones and snouts.

<sup>9</sup> Includes tongues, kidneys, livers, stomachs, hearts, chitterlings, salivary glands, and other organs removed from slaughtered hogs.

<sup>10</sup> Includes product unable to be classified elsewhere in this report.

**Public General Warehouses: Cold Storage Space Occupied  
by Region and United States, March 2003**

Region	Cooler				Freezer			
	Usable Space	Usable Space Occupied			Usable Space	Usable Space Occupied		
	Mar 31 2003	Mar 31 2002	Feb 28 2003	Mar 31 2003	Mar 31 2003	Mar 31 2002	Feb 28 2003	Mar 31 2003
	<i>1,000 Cu Ft</i>	<i>Percent</i>	<i>Percent</i>	<i>Percent</i>	<i>1,000 Cu Ft</i>	<i>Percent</i>	<i>Percent</i>	<i>Percent</i>
New England	1,783	64	68	62	16,575	60	61	59
Middle Atlantic	46,908	69	56	53	137,966	57	53	52
E. North Central	54,813	42	51	50	218,865	43	51	48
W. North Central	46,749	43	40	39	163,985	50	59	59
South Atlantic	53,205	36	31	30	204,680	50	53	51
E. South Central	9,868	46	45	43	72,758	40	40	37
W. South Central	29,553	24	31	30	142,078	53	51	50
Mountain	6,149	17	38	43	68,505	45	54	51
Pacific	51,915	35	38	38	333,761	51	58	55
US	300,943	42	42	41	1,359,173	49	54	52

## Cold Storage Regions





**Apples in Cold Storage: By State  
and United States, March 2003**

State	All Warehouses		
	Mar 31, 2002	Feb 28, 2003	Mar 31 2003
	<i>1,000 Pounds</i>	<i>1,000 Pounds</i>	
CA	21,348	29,008	20,519
MI	178,996	99,044	58,155
N ENG	10,895	14,899	10,347
NY	148,974	160,524	120,624
OH	5,580	3,415	2,045
OR	20,332	21,629	17,526
PA	158,217	136,805	109,976
VA	78,500	79,771	63,666
WA	1,535,856	2,350,000	1,715,784
WV	41,306	47,121	29,794
Other States	21,144	22,198	14,835
US	2,221,148	2,964,414	2,163,271

**Survey Procedures:** Questionnaires are mailed about the 24th of each month to all operators on the list of approximately 1,400 public and private cold storage warehouses. In addition, apple data are obtained from special surveys and other sources (State Departments of Agriculture, U.S. Apple Association, etc.). All survey data represent stocks as of the end of the month.

Data are collected from warehouses artificially cooled to a temperature of 50 degrees Fahrenheit or lower, and whose food products are normally stored for 30 days or more. All food items in these facilities are reported regardless of the number of days stored at the time of the report. Also included are specialized storage facilities meeting the 30 day requirement, such as fruit houses, dairy manufacturing plants, frozen fruit, fruit juice, and vegetable processors, and poultry and meat packing plants. Excluded are stocks in space maintained by wholesalers, jobbers, distributors, chain stores, locker plants containing individual lockers, meat packer branch houses, and frozen food processors whose entire inventories are turned over more than once a month.

**Estimating Procedures:** Data for reporting firms are added to estimates for non-reporting firms to obtain regional and National totals. Estimates for non-reporting firms are obtained by multiplying the previous month's figure by a percent change from the previous month. The percent change is calculated for each item from totals of the current and previous month summed from firms that reported both months.

**Revision Policy:** Data are revised the following month based on late reports or corrected data. Final figures are published in the annual summary in February of the following year.

**Reliability:** Reports are received from 900 firms each month which represent about 70 percent of the total capacity. Firms that are not on the list or firms who have never reported are not represented in the data. Monthly data can vary due to different firms reporting month to month. Survey data are also subject to non-sampling errors such as omissions and mistakes in reporting and in processing the data. While these errors cannot be measured directly, they are minimized by carefully reviewing all reported data for consistency and reasonableness.

The next "Cold Storage" report will be released at 3 p.m. ET on May 20, 2003.

The United States Department of Agriculture (USDA) prohibits discrimination in all its programs on the basis of race, color, national origin, gender, religion, age, disability, political beliefs, sexual orientation, and marital or family status. (Not all prohibited bases apply to all programs.) Persons with disabilities who require alternative means for communication of program information (braille, large print, audiotape, etc.) should contact the USDA's TARGET Center at 202-720-2600 (voice and TDD).

To file a complaint of discrimination, write USDA, Director, Office of Civil Rights, Room 326-W, Whitten Building, 1400 Independence Avenue, SW, Washington, D.C., 20250-9410, or call 202-720-5964 (voice or TDD). USDA is an equal opportunity provider and employer.

## **ACCESS TO REPORTS!!**

---

For your convenience, there are several ways to obtain NASS reports, data products, and services:

### **INTERNET ACCESS**

All NASS reports are available free of charge on the worldwide Internet. For access, connect to the Internet and go to the NASS Home Page at: <http://www.usda.gov/nass/>. Select "Today's Reports" or Publications and then Reports Calendar or Publications and then Search, by Title or Subject.

### **E-MAIL SUBSCRIPTION**

All NASS reports are available by subscription free of charge direct to your e-mail address. Starting with the NASS Home Page at <http://www.usda.gov/nass/>, click on **Publications**, then click on the **Subscribe by E-mail** button which takes you to the page describing e-mail delivery of reports. Finally, click on **Go to the Subscription Page** and follow the instructions.

### **AUTOFAX ACCESS**

NASSFax service is available for some reports from your fax machine. Please call 202-720-2000, using the handset attached to your fax. Respond to the voice prompts. Document 0411 is a list of available reports.

-----

### **PRINTED REPORTS OR DATA PRODUCTS**

**CALL OUR TOLL-FREE ORDER DESK: 800-999-6779 (U.S. and Canada)**  
**Other areas, please call 703-605-6220      FAX: 703-605-6900**  
**(Visa, MasterCard, check, or money order acceptable for payment.)**

-----

### **ASSISTANCE**

For **assistance** with general agricultural statistics or further information about NASS or its products or services, contact the **Agricultural Statistics Hotline** at **800-727-9540**, 7:30 a.m. to 4:00 p.m. ET, or e-mail: [nass@nass.usda.gov](mailto:nass@nass.usda.gov).

---