



Cold Storage

Released March 19, 2004, by the National Agricultural Statistics Service (NASS), Agricultural Statistics Board, U.S. Department of Agriculture. For information on "Cold Storage" call Perry Game at (202) 720-8784, office hours 7:00 a.m. to 4:00 p.m. ET.

Highlights

Frozen food stocks in refrigerated warehouses on February 29, 2004 were below last year's levels for poultry and red meat.

Butter stocks were 4 percent higher than last month, but down 34 percent from a year ago.

Total red meat supplies in freezers were down 3 percent from last month and down 4 percent from last year. Frozen pork stocks were 5 percent below last month and 7 percent below last year. Stocks of pork bellies were down 10 percent from last month, but 49 percent above a year ago.

Total frozen poultry supplies on February 29, 2004 were 7 percent above last month, but 13 percent below February 2003. Total stocks of chicken were 2 percent greater than last year, but 19 percent below last year. Total pounds of turkey in freezers were 13 percent above the previous month, but 3 percent below last year.

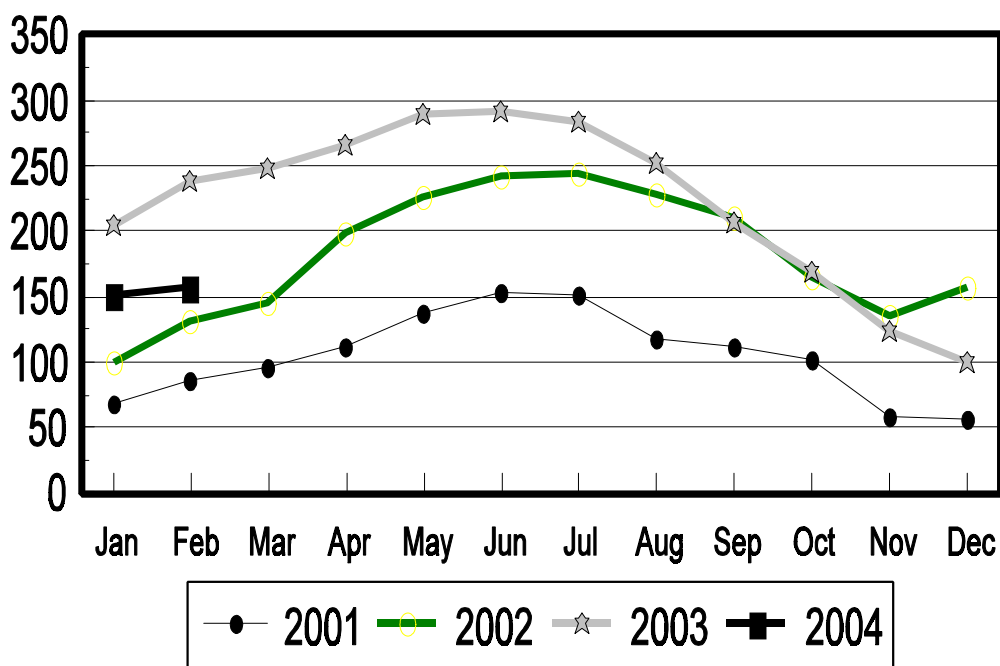
This page is intentionally blank.

Table of Contents

	Page
Stocks in Cold Storage: By Commodity, United States, February 2004	4
Stocks in Cold Storage: By Commodity, Region, and United States, January 31, 2003	8
Stocks in Cold Storage: By Commodity, Region, and United States, February 29, 2004	12
Public General Warehouses: Cold Storage Space Occupied by Region and United States, February 2004	16
Apples in Cold Storage: By State and United States, February 29, 2004 and 2003	17
Survey and Estimating Procedures, Revision Policy and Reliability	18

Butter-United States Cold Storage Stocks, 2001-2004

Million Pounds



**Stocks in Cold Storage: By Commodity,
United States, February 2004**

Commodity	Stocks in All Warehouses			Percent of		Public Warehouse Stocks
	Feb 28, 2003	Jan 31, 2004	Feb 29, 2004	Feb 2003	Jan 2004	Feb 29, 2004
	<i>1,000 Pounds</i>	<i>1,000 Pounds</i>	<i>1,000 Pounds</i>	<i>Percent</i>	<i>Percent</i>	<i>1,000 Lbs</i>
Apples						
Regular Storage	270,100	395,445	312,963	116	79	
Controlled Atmosphere	2,694,314	2,987,516	2,533,968	94	85	
Total	2,964,414	3,382,961	2,846,931	96	84	163
Pears						
Bartlett	80	4,488	3,404	4,255	76	
Other Varieties	191,166	245,655	186,158	97	76	
Total	191,246	250,143	189,562	99	76	2,818
Nuts						
Shelled						
Peanuts	306,156	267,504	305,124	100	114	
Pecans	39,153	22,567	31,226	80	138	
Other Shelled	137,283	144,082	145,832	106	101	
Total	482,592	434,153	482,182	100	111	191,283
In-Shell						
Peanuts	15,556	13,365	12,674	81	95	
Pecans	105,471	186,878	192,749	183	103	
Other In-Shell	7,311	10,029	7,613	104	76	
Total	128,338	210,272	213,036	166	101	73,319
Dairy Products						
Butter, Total	239,879	152,448	157,915	66	104	145,060
(Government Owned) ¹	1,391	1,258	1,209	87	96	
Natural Cheese						
American, Total	538,833	518,113	533,114	99	103	
(Government Owned)	368	9,616	9,616	2,613	100	
Swiss	23,151	25,244	25,361	110	100	
Other Natural Cheese	208,024	213,575	208,418	100	98	
Total	770,008	756,932	766,893	100	101	410,707
Eggs, Frozen						
Whites	2,571	2,870	2,900	113	101	
Yolks	1,169	1,149	1,122	96	98	
Whole & Mixed	9,463	12,423	13,914	147	112	
Unclassified	3,924	4,862	3,207	82	66	
Total	17,127	21,304	21,143	123	99	20,741
Frozen Poultry						
Chicken						
Broilers, Fryers						
Roasters (Whole)	24,413	20,767	23,560	97	113	
Hens, Mature Chickens	4,465	4,182	4,109	92	98	
Breasts & Breast Meat		86,265	86,391		100	
Drumsticks		7,840	12,651		161	
Leg Quarters		72,439	77,065		106	
Legs		13,344	10,487		79	
Thigh & Thigh Quarters		5,751	5,952		103	
Thigh Meat ²		17,712	15,131		85	
Wings ³		18,800	20,001		106	
Paws and Feet		10,554	15,886		151	
Other		277,247	272,350		98	
Total Chicken	672,785	534,901	543,583	81	102	

See footnote(s) at end of table.

--continued

**Stocks in Cold Storage: By Commodity,
United States, February 2004**

Commodity	Stocks in All Warehouses			Percent of		Public Warehouse Stocks
	Feb 28, 2003	Jan 31, 2004	Feb 29, 2004	Feb 2003	Jan 2004	Feb 29, 2004
	<i>1,000 Pounds</i>	<i>1,000 Pounds</i>	<i>1,000 Pounds</i>	<i>Percent</i>	<i>Percent</i>	<i>1,000 Lbs</i>
Turkeys						
Toms (Whole Carcasses)	117,842	107,811	133,640	113	124	
Hens (Whole Carcasses)	77,967	71,977	95,466	122	133	
Whole Turkeys	195,809	179,788	229,106	117	127	
Other Turkey	296,928	240,678	247,749	83	103	
Total Turkey	492,737	420,466	476,855	97	113	372,619
Ducks	5,135	1,484	1,328	26	89	
Total Poultry	1,170,657	956,851	1,021,766	87	107	877,052
Frozen Fruit						
Apples	56,761	48,596	50,786	89	105	
Apricots	3,444	6,135	4,724	137	77	
Blackberries, Total	17,316	19,464	17,880	103	92	
IQF	11,383	13,754	12,908	113	94	
Pails and Tubs	1,390	1,574	1,360	98	86	
Barrels, 400 lbs net	3,954	2,889	2,540	64	88	
Concentrate	589	1,247	1,072	182	86	
Blueberries	65,843	69,985	69,523	106	99	
Boysenberries	2,596	1,307	709	27	54	
Cherries, Tart (RTP)	38,699	60,825	51,193	132	84	
Cherries, Tart (Juice)	1,594	1,308	1,610	101	123	
Cherries, Sweet	6,817	6,039	6,325	93	105	
Grapes	6,069	7,186	6,178	102	86	
Peaches	52,319	62,887	52,603	101	84	
Raspberries, Black	1,939	945	834	43	88	
Raspberries, Red, Total	38,013	34,658	30,904	81	89	
IQF	14,082	16,356	15,362	109	94	
Pails and Tubs	8,821	8,344	7,415	84	89	
Barrels, 400 lbs net	14,206	8,873	7,304	51	82	
Concentrate	904	1,085	823	91	76	
Strawberries, Total	203,617	220,329	197,513	97	90	
IQF and Poly	125,074	102,277	91,623	73	90	
Pails and Tubs	46,557	79,092	69,676	150	88	
Barrels and Drums	25,047	31,649	28,966	116	92	
Juice Stock	6,939	7,311	7,248	104	99	
Other Frozen Fruit	361,892	355,842	321,545	89	90	
Total	856,919	895,506	812,327	95	91	697,508
Frozen Juice						
Orange Juice Conc. ⁴	1,833,399	1,824,103	1,904,933	104	104	
(Gallon Equivalent)	185,267	184,327	192,495			
Other Juice Concentrate	252,237	306,539	331,369	131	108	
Total	2,085,636	2,130,642	2,236,302	107	105	299,386

See footnote(s) at end of table.

--continued

**Stocks in Cold Storage: By Commodity,
United States, February 2004**

Commodity	Stocks in All Warehouses			Percent of		Public Warehouse Stocks
	Feb 28, 2003	Jan 31, 2004	Feb 29, 2004	Feb 2003	Jan 2004	Feb 29, 2004
	<i>1,000 Pounds</i>	<i>1,000 Pounds</i>	<i>1,000 Pounds</i>	<i>Percent</i>	<i>Percent</i>	<i>1,000 Lbs</i>
Frozen Vegetables						
Asparagus	5,877	7,600	6,987	119	92	
Limas, Fordhook	8,888	5,790	5,038	57	87	
Limas, Baby	40,034	40,789	37,101	93	91	
Green Beans, Reg. Cut	133,125	113,562	103,018	77	91	
Green Beans, Fr. Style	15,934	21,898	19,239	121	88	
Broccoli, Spears	52,064	32,890	35,483	68	108	
Broccoli, Chopped & Cut	72,673	46,069	47,103	65	102	
Brussels Sprouts	17,037	20,655	18,225	107	88	
Carrots, Diced	70,047	85,435	81,655	117	96	
Carrots, Other	118,043	139,613	129,226	109	93	
Cauliflower	30,923	27,295	24,592	80	90	
Corn, Cut	337,210	458,556	409,136	121	89	
Corn, Cob	224,601	260,167	223,309	99	86	
Mixed Vegetables	42,935	42,643	43,948	102	103	
Okra	36,922	31,709	27,704	75	87	
Onion Rings	6,702	6,395	6,865	102	107	
Onions, Other	31,424	26,120	27,785	88	106	
Blackeye Peas	5,278	3,414	3,460	66	101	
Green Peas	118,571	156,435	130,887	110	84	
Peas & Carrots Mixed	7,096	6,698	6,009	85	90	
Spinach	57,666	40,399	37,050	64	92	
Squash, Summer/Zucchini	37,171	39,251	36,196	97	92	
Southern Greens	23,951	19,649	19,371	81	99	
Other Vegetables	289,276	306,091	284,128	98	93	
Total	1,783,448	1,939,123	1,763,515	99	91	1,355,690
Potatoes						
French Fries	950,492	906,579	931,552	98	103	
Other Frozen	260,483	260,680	277,021	106	106	
Total	1,210,975	1,167,259	1,208,573	100	104	890,383

See footnote(s) at end of table.

--continued

**Stocks in Cold Storage: By Commodity,
United States, February 2004 (Continued)**

Commodity	Stocks in All Warehouses			Percent of		Public Warehouse Stocks
	Feb 28, 2003	Jan 31, 2004	Feb 29, 2004	Feb 2003	Jan 2004	Feb 29, 2004
	<i>1,000 Pounds</i>	<i>1,000 Pounds</i>	<i>1,000 Pounds</i>	<i>Percent</i>	<i>Percent</i>	<i>1,000 Lbs</i>
Meat						
Frozen Beef						
Boneless ⁵	380,164	373,167	380,755	100	102	
Beef Cuts ⁶	61,691	61,187	55,643	90	91	
Total	441,855	434,354	436,398	99	100	434,197
(Government Owned)	2,487	7,918	7,358	296	93	
Frozen Pork						
Picnics, Bone-in	11,552	12,207	11,771	102	96	
Hams, Total	89,194	71,825	70,339	79	98	67,387
Bone-in	49,131	38,407	39,301	80	102	38,270
Boneless ⁷	40,063	33,418	31,038	77	93	29,117
Bellies	38,278	63,095	57,035	149	90	
Loins, Total	44,336	42,245	40,380	91	96	36,005
Bone-in	22,794	26,278	23,716	104	90	
Boneless ⁸	21,542	15,967	16,664	77	104	
Ribs ⁹	96,999	79,130	74,381	77	94	
Butts	17,555	10,125	10,538	60	104	
Trimmings ¹⁰	55,121	48,623	44,548	81	92	
Other ¹¹	76,996	86,682	78,113	101	90	
Variety Meats ¹²	43,687	41,823	41,310	95	99	
Unclassified ¹³	45,995	54,759	55,194	120	101	
Total	519,713	510,514	483,609	93	95	429,590
(Government Owned)	1,370	1,323	1,110	81	84	
Other						
Veal	6,111	5,284	5,197	85	98	
Lamb & Mutton	4,063	3,671	3,355	83	91	
Total	10,174	8,955	8,552	84	95	8,468
Canned						
Canned Hams	5,842	5,872	5,689	97	97	
Other Canned Meat	665	417	495	74	119	
Total	6,507	6,289	6,184	95	98	6,066
Total	978,249	960,112	934,743	96	97	878,321
Miscellaneous						
Cooler	659,032	763,624	749,799	114	98	298,605
Freezer	2,207,208	1,686,678	1,753,492	79	104	1,696,146
Total	2,866,240	2,450,302	2,503,291	87	102	1,994,751
Commodities						
Stored in Coolers	5,213,939	5,815,698	5,271,419	101	91	1,171,596
Stored in Freezers	10,531,789	9,892,310	9,886,760	94	100	6,854,221
Total	15,745,728	15,708,008	15,158,179	96	96	8,025,817

¹ Preliminary revisions indicate Government Owned Butter stocks at 10,779 for June; 8,938 for May; 5,089 for April; 2,576 for March; 1,391 for February. Annual revisions will be published in February 2004.

² Boneless.

³ All Products.

⁴ Adjusted to 42.0 degrees Brix equivalent (9.896 pounds per gallon).

⁵ Includes all boxed boneless beef, such as ground beef, roasts, steaks, loins, strips, rounds, trimmings, etc. Variety meats (edible offal), such as tongues, livers, hearts, kidneys, and other organs removed from slaughtered beef, are included as miscellaneous freezer stocks.

⁶ Includes all boxed primal beef cuts, bone-in.

⁷ Includes full ham, bone removed and individual muscles separated.

⁸ Includes pork tenderloins.

⁹ Includes spareribs and backribs.

¹⁰ Includes 42% regular trimmings, 72% special trimmings, boneless picnic meat, jowls, neckbone trimmings, blade, cheek, head, and shank meat, etc. Packaged bacon, sausage, and processed items, such as hot dogs and luncheon meats, are included in miscellaneous cooler or freezer stocks.

¹¹ Includes ears, tails, feet, neckbones and snouts.

¹² Includes tongues, kidneys, livers, stomachs, hearts, chitterlings, salivary glands, and other organs removed from slaughtered hogs.

¹³ Includes product unable to be classified elsewhere in this report.

**Stocks in Cold Storage: By Commodity, Region,
and United States, January 31, 2004**

Commodity	New England	Middle Atlantic	East North Central	West North Central	South Atlantic
	<i>1,000 Pounds</i>	<i>1,000 Pounds</i>	<i>1,000 Pounds</i>	<i>1,000 Pounds</i>	<i>1,000 Pounds</i>
Total Fresh Apples	24,854	491,603	250,440	455	206,610
Nuts					
Shelled					
Peanuts		739	521	18	161,580
Pecans ¹		64			9,050
In-Shell					
Pecans ¹					45,378
Dairy Products					
Natural Cheese					
American, Total	22,176	49,684	198,290	121,471	4,943
Other Natural Cheese	322	15,247	123,847	53,707	1,881
Frozen Poultry					
Chicken					
Broilers, Fryers					
Roasters (Whole)	1	1,563	321	822	3,173
Hens, Mature Chickens	23	265	217	259	382
Other	1,162	13,901	14,797	25,215	169,554
Total Chicken	1,186	15,729	15,335	26,296	173,109
Turkeys					
Whole Turkeys	732	4,484	993	47,696	47,280
Other Turkey	674	9,021	17,793	55,261	106,250
Total Turkey	1,406	13,505	18,786	102,957	153,530
Ducks		446	771		100
Total Poultry	2,592	29,680	34,892	129,253	326,739
Frozen Fruit					
Apples	31	11,903	28,024	74	371
Blueberries	14,913	8,636	29,164	1,888	1,453
Cherries, Tart (RTP)	3	4,461	47,307	92	1,390
Cherries, Sweet		301	2,957	892	29
Peaches	32	2,707	5,476	3,988	497
Raspberries, Red	43	764	991	332	173
Strawberries, Total	101	6,142	9,107	1,563	849
Other Frozen Fruit	139	8,950	221,491	2,511	3,382

See footnote(s) at end of table.

--continued

**Stocks in Cold Storage: By Commodity, Region,
and United States, January 31, 2003 (continued)**

Commodity	East South Central	West South Central	Mountain	Pacific	US Total
	<i>1,000 Pounds</i>	<i>1,000 Pounds</i>	<i>1,000 Pounds</i>	<i>1,000 Pounds</i>	<i>1,000 Pounds</i>
Total Fresh Apples		9,700	13,134	2,386,165	3,382,961
Nuts					
Shelled					
Peanuts	23,891	80,512	82	161	267,504
Pecans ¹	601	12,761		91	22,567
In-Shell					
Pecans ¹	4,198	137,302			186,878
Dairy Products					
Natural Cheese					
American, Total	225	1,785	22,038	97,501	518,113
Other Natural Cheese	2,274	65	4,260	11,972	213,575
Frozen Poultry					
Chicken					
Broilers, Fryers					
Roasters (Whole)	2,979	9,456	209	2,243	20,767
Hens, Mature Chickens	557	1,536		943	4,182
Other	113,371	143,414	3,749	24,789	509,952
Total Chicken	116,907	154,406	3,958	27,975	534,901
Turkeys					
Whole Turkeys	1,617	58,448	5,204	13,334	179,788
Other Turkey	802	22,540	11,868	16,469	240,678
Total Turkey	2,419	80,988	17,072	29,803	420,466
Ducks	23	44	69	31	1,484
Total Poultry	119,349	235,438	21,099	57,809	956,851
Frozen Fruit					
Apples	142	1,763	85	6,203	48,596
Blueberries	182	631	179	12,939	69,985
Cherries, Tart (RTP)		222	1,414	5,936	60,825
Cherries, Sweet	1	55	540	1,264	6,039
Peaches	60	1,028	136	48,963	62,887
Raspberries, Red	177	140	6	32,032	34,658
Strawberries, Total	1,169	17,712	166	183,520	220,329
Other Frozen Fruit	171	9,636	3,511	106,051	355,842

See footnote(s) at end of table.

--continued

**Stocks in Cold Storage: By Commodity, Region,
and United States, January 31, 2004 (continued)**

Commodity	New England	Middle Atlantic	East North Central	West North Central	South Atlantic
	<i>1,000 Pounds</i>	<i>1,000 Pounds</i>	<i>1,000 Pounds</i>	<i>1,000 Pounds</i>	<i>1,000 Pounds</i>
Frozen Juice					
Orange Juice Conc. ²	121		556	101	1,752,625
Other Juice Concentrate	45,525	29,743	15,539	1,025	86,699
Frozen Vegetables ³					
Asparagus		832	3,605	46	449
Limas, Fordhook		1,819	636	4	530
Limas, Baby		4,228	2,010		5,664
Green Beans, Reg. Cut		26,323	26,483	1,988	2,218
Green Beans, Fr. Style		4,836	6,377	158	577
Broccoli, Spears		4,756	4,971		2,427
Broccoli, Chopped & Cut		3,372	3,846	4,627	8,045
Brussels Sprouts		2,188	1,766	1	2,151
Carrots, Diced		10,578	25,363	424	1,623
Carrots, Other		15,610	19,398	339	4,606
Cauliflower		2,701	3,375	50	1,320
Corn, Cut		42,157	71,443	35,950	6,096
Corn, Cob		16,366	35,634	22,101	6,468
Mixed Vegetables		4,088	7,554	66	2,074
Okra		1,176	419		4,072
Onion Rings		250	3,259	975	504
Onions, Other		3,568	3,948	257	1,821
Blackeye Peas		434	67		2,064
Green Peas		17,696	21,881	14,119	4,141
Peas & Carrots Mixed		1,121	1,065	24	582
Spinach		7,357	3,196	52	3,478
Squash, Summer/Zucchini		3,714	10,327	1	3,741
Southern Greens		2,476	461		7,391
Other Vegetables		35,054	39,510	9,693	22,821
Potatoes					
French Fries	29,739	29,314	58,544	113,367	24,393
Other Frozen	4,260	11,730	33,508	7,632	3,411
Meat					
Frozen Beef					
Boneless ⁴	1,558	52,878	38,208	112,297	32,939
Beef Cuts ⁵	277	2,521	11,929	9,458	3,590
Frozen Pork					
Ribs ⁶	355	1,522	19,717	38,537	8,945
Trimmings ⁷	52	502	12,603	28,240	2,205
Other ⁸	2,042	1,114	13,723	38,985	15,875
Other					
Veal		1,252	1,103	230	44
Lamb & Mutton	3	341	870	256	835

See footnote(s) at end of table.

--continued

**Stocks in Cold Storage: By Commodity, Region,
and United States, January 31, 2004 (continued)**

Commodity	East South Central	West South Central	Mountain	Pacific	US Total
	<i>1,000 Pounds</i>	<i>1,000 Pounds</i>	<i>1,000 Pounds</i>	<i>1,000 Pounds</i>	<i>1,000 Pounds</i>
Frozen Juice					
Orange Juice Concentrate	35	4,166	200	66,299	1,824,103
Other Juice Concentrate	154	14,487	1,879	111,488	306,539
Frozen Vegetables ³					
Asparagus		569	6	2,093	7,600
Limas, Fordhook		290	2	2,509	5,790
Limas, Baby		1,136	5,323	22,428	40,789
Green Beans, Reg. Cut		1,614	223	54,713	113,562
Green Beans, Fr. Style		332	17	9,601	21,898
Broccoli, Spears		13,326	597	6,813	32,890
Broccoli, Chopped & Cut		10,828	893	14,458	46,069
Brussels Sprouts		288	1	14,260	20,655
Carrots, Diced		812	27	46,608	85,435
Carrots, Other		8,972	225	90,463	139,613
Cauliflower		3,178	15	16,656	27,295
Corn, Cut		2,273	4,018	296,619	458,556
Corn, Cob		1,182	79	178,337	260,167
Mixed Vegetables		4,953	125	23,783	42,643
Okra		25,361		681	31,709
Onion Rings		372	438	597	6,395
Onions, Other		1,547	2,540	12,439	26,120
Blackeye Peas		603		246	3,414
Green Peas		2,658	10,047	85,893	156,435
Peas & Carrots Mixed		453	29	3,424	6,698
Spinach		9,371	68	16,877	40,399
Squash, Summer/Zucchini		3,549	638	17,281	39,251
Southern Greens		7,976		1,345	19,649
Other Vegetables		35,924	7,056	156,033	306,091
Potatoes					
French Fries	7,753	12,460	190,074	440,935	906,579
Other Frozen	1,558	23,017	51,051	124,513	260,680
Meat					
Frozen Beef					
Boneless ⁴	2,595	71,750	8,218	52,724	373,167
Beef Cuts ⁵	4,391	8,850	8,548	11,623	61,187
Frozen Pork					
Ribs ⁶	2,712	3,522	217	3,603	79,130
Trimming ⁷	192	4,225	52	552	48,623
Other ⁸	9,699	3,234	249	1,761	86,682
Other					
Veal		390	1	2,264	5,284
Lamb & Mutton	5	265	25	1,071	3,671

¹ East North Central combined with South Atlantic. Mountain and West North Central combined with West South Central.

² Middle Atlantic combined with South Atlantic.

³ New England combined with Middle Atlantic. East South Central combined with South Atlantic.

⁴ Includes all boxed boneless beef, such as ground beef, roasts, steaks, loins, strips, rounds, trimmings, etc. Variety meats (edible offal), such as tongues, livers, hearts, kidneys, and other organs removed from slaughtered beef, are included as miscellaneous freezer stocks.

⁵ Includes all boxed primal beef cuts, bone-in.

⁶ Includes spareribs and backribs.

⁷ Includes 42% regular trimmings, 72% special trimmings, boneless picnic meat, jowls, neckbone trimmings, blade, cheek, head, and shank meat, etc. Packaged bacon, sausage, and processed items, such as hot dogs and luncheon meats, are included in miscellaneous cooler or freezer stocks.

⁸ Includes ears, tails, feet, neckbones and snouts.

⁹ Includes tongues, kidneys, livers, stomachs, hearts, chitterlings, salivary glands, and other organs removed from slaughtered hogs.

¹⁰ Includes product unable to be classified elsewhere in this report.

**Stocks in Cold Storage: By Commodity, Region,
and United States, February 29, 2004**

Commodity	New England	Middle Atlantic	East North Central	West North Central	South Atlantic
	<i>1,000 Pounds</i>	<i>1,000 Pounds</i>	<i>1,000 Pounds</i>	<i>1,000 Pounds</i>	<i>1,000 Pounds</i>
Total Fresh Apples	19,058	388,611	230,185		167,524
Nuts					
Shelled					
Peanuts		778	224	21	199,203
Pecans ¹		85			10,901
In-Shell					
Pecans ¹					43,268
Dairy Products					
Natural Cheese					
American, Total	23,492	51,474	205,757	120,724	5,894
Other Natural Cheese	368	14,986	121,616	51,342	1,495
Frozen Poultry					
Chicken					
Broilers, Fryers					
Roasters (Whole)		2,111	266	990	4,066
Hens, Mature Chickens	23	278	69	249	413
Other	1,016	14,112	12,737	25,318	178,279
Total Chicken	1,039	16,501	13,072	26,557	182,758
Turkeys					
Whole Turkeys	924	4,447	1,169	61,635	55,942
Other Turkey	536	9,859	17,251	59,742	107,228
Total Turkey	1,460	14,306	18,420	121,377	163,170
Ducks		412	666		98
Total Poultry	2,499	31,219	32,158	147,934	346,026
Frozen Fruit					
Apples	28	14,261	28,059	68	419
Blueberries	14,718	7,718	31,565	1,708	1,380
Cherries, Tart (RTP)	1	3,698	39,595	79	1,164
Cherries, Sweet		292	3,081	933	30
Peaches	28	2,936	5,090	3,411	413
Raspberries, Red	28	657	1,078	472	190
Strawberries, Total	58	7,093	10,959	1,738	1,978
Other Frozen Fruit	127	8,387	199,334	2,551	3,195

See footnote(s) at end of table.

--continued

**Stocks in Cold Storage: By Commodity, Region,
and United States, February 29, 2004 (continued)**

Commodity	East South Central	West South Central	Mountain	Pacific	US Total
	<i>1,000 Pounds</i>	<i>1,000 Pounds</i>	<i>1,000 Pounds</i>	<i>1,000 Pounds</i>	<i>1,000 Pounds</i>
Total Fresh Apples		7,600	9,252	2,024,701	2,846,931
Nuts					
Shelled					
Peanuts	30,604	74,022	86	186	305,124
Pecans ¹	961	19,196		83	31,226
In-Shell					
Pecans ¹	3,150	146,331			192,749
Dairy Products					
Natural Cheese					
American, Total	137	2,334	23,499	99,803	533,114
Other Natural Cheese	2,285	89	4,263	11,974	208,418
Frozen Poultry					
Chicken					
Broilers, Fryers					
Roasters (Whole)	3,819	9,553	222	2,533	23,560
Hens, Mature Chickens	353	1,799		925	4,109
Other	116,567	141,229	3,487	23,169	515,914
Total Chicken	120,739	152,581	3,709	26,627	543,583
Turkeys					
Whole Turkeys	2,042	78,990	7,105	16,852	229,106
Other Turkey	826	22,959	10,579	18,769	247,749
Total Turkey	2,868	101,949	17,684	35,621	476,855
Ducks	21	44	63	24	1,328
Total Poultry	123,628	254,574	21,456	62,272	1,021,766
Frozen Fruit					
Apples	67	1,754	87	6,043	50,786
Blueberries	185	615	152	11,482	69,523
Cherries, Tart (RTP)		210	1,191	5,255	51,193
Cherries, Sweet	1	29	494	1,465	6,325
Peaches	42	1,005	85	39,593	52,603
Raspberries, Red	246	156	17	28,060	30,904
Strawberries, Total	1,475	15,756	149	158,307	197,513
Other Frozen Fruit	223	9,678	3,551	94,499	321,545

See footnote(s) at end of table.

--continued

**Stocks in Cold Storage: By Commodity, Region,
and United States, February 29, 2004 (continued)**

Commodity	New England	Middle Atlantic	East North Central	West North Central	South Atlantic
	<i>1,000 Pounds</i>	<i>1,000 Pounds</i>	<i>1,000 Pounds</i>	<i>1,000 Pounds</i>	<i>1,000 Pounds</i>
Frozen Juice					
Orange Juice Conc. ²	136		1,001	196	1,832,810
Other Juice Concentrate	57,156	27,823	17,243	1,101	93,505
Frozen Vegetables ³					
Asparagus		707	3,289	47	347
Limas, Fordhook		1,282	648	4	453
Limas, Baby		4,227	2,023		5,399
Green Beans, Reg. Cut		17,837	22,433	1,793	9,164
Green Beans, Fr. Style		3,982	5,245	185	1,398
Broccoli, Spears		4,575	4,526		3,245
Broccoli, Chopped & Cut		3,753	4,152	4,388	7,423
Brussels Sprouts		1,993	1,703	1	2,009
Carrots, Diced		9,460	23,083	557	5,788
Carrots, Other		13,502	17,103	336	7,454
Cauliflower		2,815	3,255	28	1,333
Corn, Cut		34,103	63,351	32,494	18,150
Corn, Cob		14,799	30,560	18,902	10,914
Mixed Vegetables		4,413	7,662	70	2,727
Okra		1,010	428		4,049
Onion Rings		279	3,656	1,247	375
Onions, Other		4,672	4,797	327	2,254
Blackeye Peas		529	63		2,005
Green Peas		14,145	18,415	10,858	4,775
Peas & Carrots Mixed		1,108	848		532
Spinach		5,697	2,952	43	3,122
Squash, Summer/Zucchini		3,546	9,261		4,106
Southern Greens		2,329	537		7,754
Other Vegetables		32,558	36,409	8,814	22,179
Potatoes					
French Fries	36,480	25,866	60,775	111,550	26,524
Other Frozen	4,617	11,013	36,226	6,836	3,382
Meat					
Frozen Beef					
Boneless ⁴	1,243	55,106	38,515	114,881	31,957
Beef Cuts ⁵	350	2,318	11,858	8,645	3,292
Frozen Pork					
Ribs ⁶	280	1,514	15,336	37,826	9,045
Trimmings ⁷		401	11,223	26,557	1,863
Other ⁸	1,832	817	12,387	36,060	13,193
Other					
Veal		1,136	1,191	196	63
Lamb & Mutton		329	819	193	848

See footnote(s) at end of table.

--continued

**Stocks in Cold Storage: By Commodity, Region,
and United States, February 29, 2004 (continued)**

Commodity	East South Central	West South Central	Mountain	Pacific	US Total
	<i>1,000 Pounds</i>	<i>1,000 Pounds</i>	<i>1,000 Pounds</i>	<i>1,000 Pounds</i>	<i>1,000 Pounds</i>
Frozen Juice					
Orange Juice Concentrate	37	2,154	203	68,396	1,904,933
Other Juice Concentrate	223	15,402	1,686	117,230	331,369
Frozen Vegetables ³					
Asparagus		500	5	2,092	6,987
Limas, Fordhook		208	2	2,441	5,038
Limas, Baby		890	4,993	19,569	37,101
Green Beans, Reg. Cut		1,476	454	49,861	103,018
Green Beans, Fr. Style		280	19	8,130	19,239
Broccoli, Spears		13,847	656	8,634	35,483
Broccoli, Chopped & Cut		11,424	349	15,614	47,103
Brussels Sprouts		224	1	12,294	18,225
Carrots, Diced		1,834	24	40,909	81,655
Carrots, Other		9,207	230	81,394	129,226
Cauliflower		3,062	15	14,084	24,592
Corn, Cut		1,742	3,445	255,851	409,136
Corn, Cob		1,119	79	146,936	223,309
Mixed Vegetables		5,017	135	23,924	43,948
Okra		21,625		592	27,704
Onion Rings		350	434	524	6,865
Onions, Other		1,487	2,419	11,829	27,785
Blackeye Peas		573		290	3,460
Green Peas		2,179	8,943	71,572	130,887
Peas & Carrots Mixed		520	29	2,972	6,009
Spinach		11,763	143	13,330	37,050
Squash, Summer/Zucchini		2,725	484	16,074	36,196
Southern Greens		7,461		1,290	19,371
Other Vegetables		32,452	6,864	144,852	284,128
Potatoes					
French Fries	6,990	12,046	193,083	458,238	931,552
Other Frozen	1,636	21,571	56,386	135,354	277,021
Meat					
Frozen Beef					
Boneless ⁴	2,747	76,549	7,846	51,911	380,755
Beef Cuts ⁵	4,218	7,749	8,334	8,879	55,643
Frozen Pork					
Ribs ⁶	2,667	3,822	182	3,709	74,381
Trimming ⁷	180	3,856	23	445	44,548
Other ⁸	8,730	2,886	348	1,860	78,113
Other					
Veal		304	1	2,306	5,197
Lamb & Mutton	2	186	22	956	3,355

¹ East North Central combined with South Atlantic. Mountain and West North Central Combined with West South Central.

² Middle Atlantic combined with South Atlantic.

³ New England combined with Middle Atlantic. East South Central combined with South Atlantic.

⁴ Includes all boxed boneless beef, such as ground beef, roasts, steaks, loins, strips, rounds, trimmings, etc. Variety meats (edible offal), such as tongues, livers, hearts, kidneys, and other organs removed from slaughtered beef, are included as miscellaneous freezer stocks.

⁵ Includes all boxed primal beef cuts, bone-in.

⁶ Includes spareribs and backribs.

⁷ Includes 42% regular trimmings, 72% special trimmings, boneless picnic meat, jowls, neckbone trimmings, blade, cheek, head, and shank meat, etc. Packaged bacon, sausage, and processed items, such as hot dogs and luncheon meats, are included in miscellaneous cooler or freezer stocks.

⁸ Includes ears, tails, feet, neckbones and snouts.

⁹ Includes tongues, kidneys, livers, stomachs, hearts, chitterlings, salivary glands, and other organs removed from slaughtered hogs.

¹⁰ Includes product unable to be classified elsewhere in this report.

**Public General Warehouses: Cold Storage Space Occupied
by Region and United States, February 2004**

Region	Cooler				Freezer			
	Usable Space	Usable Space Occupied			Usable Space	Usable Space Occupied		
	Feb 29 2004	Feb 28 2003	Jan 31 2004	Feb 29 2004	Feb 29 2004	Feb 28 2003	Jan 31 2004	Feb 29 2004
	<i>1,000 Cu Ft</i>	<i>Percent</i>	<i>Percent</i>	<i>Percent</i>	<i>1,000 Cu Ft</i>	<i>Percent</i>	<i>Percent</i>	<i>Percent</i>
New England	1,744	68	82	87	15,747	63	80	78
Middle Atlantic	46,905	56	58	57	136,128	53	55	50
E. North Central	57,706	51	53	50	219,651	51	52	51
W. North Central	46,280	40	40	35	160,060	59	57	55
South Atlantic	52,547	31	25	24	200,465	53	45	45
E. South Central	9,831	45	44	43	71,316	40	38	37
W. South Central	29,552	31	25	23	139,319	51	43	43
Mountain	12,234	38	39	39	60,738	54	60	60
Pacific	54,610	38	37	35	317,953	58	65	63
US	311,409	42	41	39	1,321,377	54	54	52

Cold Storage Regions



**Apples in Cold Storage: By State
and United States, February 2004**

State	All Warehouses		
	Feb 28, 2003	Jan 31, 2004	Feb 29, 2004
	<i>1,000 Pounds</i>	<i>1,000 Pounds</i>	
CA	29,008	47,574	35,117
MI	99,044	237,235	222,665
N ENG	14,899	24,854	19,058
NY	160,524	287,910	223,734
OH	3,415	9,460	5,505
OR	21,629	25,315	18,566
PA	136,805	203,693	164,877
VA	79,771	115,245	94,520
WA	2,350,000	2,313,276	1,971,018
WV	47,121	69,349	56,885
Other States	22,198	49,050	34,986
US	2,964,414	3,382,961	2,846,931

Survey Procedures: Questionnaires are mailed about the 24th of each month to all operators on the list of approximately 1,400 public and private cold storage warehouses. In addition, apple data are obtained from special surveys and other sources (State Departments of Agriculture, U.S. Apple Association, etc.). All survey data represent stocks as of the end of the month.

Data are collected from warehouses artificially cooled to a temperature of 50 degrees Fahrenheit or lower, and whose food products are normally stored for 30 days or more. All food items in these facilities are reported regardless of the number of days stored at the time of the report. Also included are specialized storage facilities meeting the 30 day requirement, such as fruit houses, dairy manufacturing plants, frozen fruit, fruit juice, and vegetable processors, and poultry and meat packing plants. Excluded are stocks in space maintained by wholesalers, jobbers, distributors, chain stores, locker plants containing individual lockers, meat packer branch houses, and frozen food processors whose entire inventories are turned over more than once a month.

Estimating Procedures: Data for reporting firms are added to estimates for non-reporting firms to obtain regional and National totals. Estimates for non-reporting firms are obtained by multiplying the previous month's figure by a percent change from the previous month. The percent change is calculated for each item from totals of the current and previous month summed from firms that reported both months.

Revision Policy: Data are revised the following month based on late reports or corrected data. Final figures are published in the annual summary in February of the following year.

Reliability: Reports are received from 900 firms each month which represent about 70 percent of the total capacity. Firms that are not on the list or firms who have never reported are not represented in the data. Monthly data can vary due to different firms reporting month to month. Survey data are also subject to non-sampling errors such as omissions and mistakes in reporting and in processing the data. While these errors cannot be measured directly, they are minimized by carefully reviewing all reported data for consistency and reasonableness.

The next "Cold Storage" report will be released at 3 p.m. ET on April 21, 2004.

The United States Department of Agriculture (USDA) prohibits discrimination in all its programs on the basis of race, color, national origin, gender, religion, age, disability, political beliefs, sexual orientation, and marital or family status. (Not all prohibited bases apply to all programs.) Persons with disabilities who require alternative means for communication of program information (braille, large print, audiotape, etc.) should contact the USDA's TARGET Center at 202-720-2600 (voice and TDD).

To file a complaint of discrimination, write USDA, Director, Office of Civil Rights, Room 326-W, Whitten Building, 1400 Independence Avenue, SW, Washington, D.C., 20250-9410, or call 202-720-5964 (voice or TDD). USDA is an equal opportunity provider and employer.

ACCESS TO REPORTS!!

For your convenience, there are several ways to obtain NASS reports, data products, and services:

INTERNET ACCESS

All NASS reports are available free of charge on the worldwide Internet. For access, connect to the Internet and go to the NASS Home Page at: www.usda.gov/nass/. Select "Today's Reports" or Publications and then Reports Calendar or Publications and then Search, by Title or Subject.

E-MAIL SUBSCRIPTION

All NASS reports are available by subscription free of charge direct to your e-mail address. Starting with the NASS Home Page at www.usda.gov/nass/, click on **Publications**, then click on the **Subscribe by E-mail** button which takes you to the page describing e-mail delivery of reports. Finally, click on **Go to the Subscription Page** and follow the instructions.

PRINTED REPORTS OR DATA PRODUCTS

CALL OUR TOLL-FREE ORDER DESK: 800-999-6779 (U.S. and Canada)
Other areas, please call 703-605-6220 FAX: 703-605-6900
(Visa, MasterCard, check, or money order acceptable for payment.)

ASSISTANCE

For **assistance** with general agricultural statistics or further information about NASS or its products or services, contact the **Agricultural Statistics Hotline** at **800-727-9540**, 7:30 a.m. to 4:00 p.m. ET, or e-mail: nass@nass.usda.gov.
