



# Cold Storage

---

Released May 20, 2004, by the National Agricultural Statistics Service (NASS), Agricultural Statistics Board, U.S. Department of Agriculture. For information on *Cold Storage* call Perry Game at (202) 720-8784, office hours 7:00 a.m. to 4:00 p.m. ET.

## Highlights

**Frozen food stocks** in refrigerated warehouses on April 30, 2004 were greater than year earlier levels for frozen eggs, beef, orange juice, vegetables and potatoes.

Butter stocks were 1 percent below last month and 41 percent below last year.

**Total red meat supplies** in freezers were up slightly from last month, but down 4 percent from a year ago. Frozen pork stocks were down 1 percent from a month ago and down 13 percent from last year. Stocks of pork bellies were down 8 percent from last month and were down 5 percent from last year.

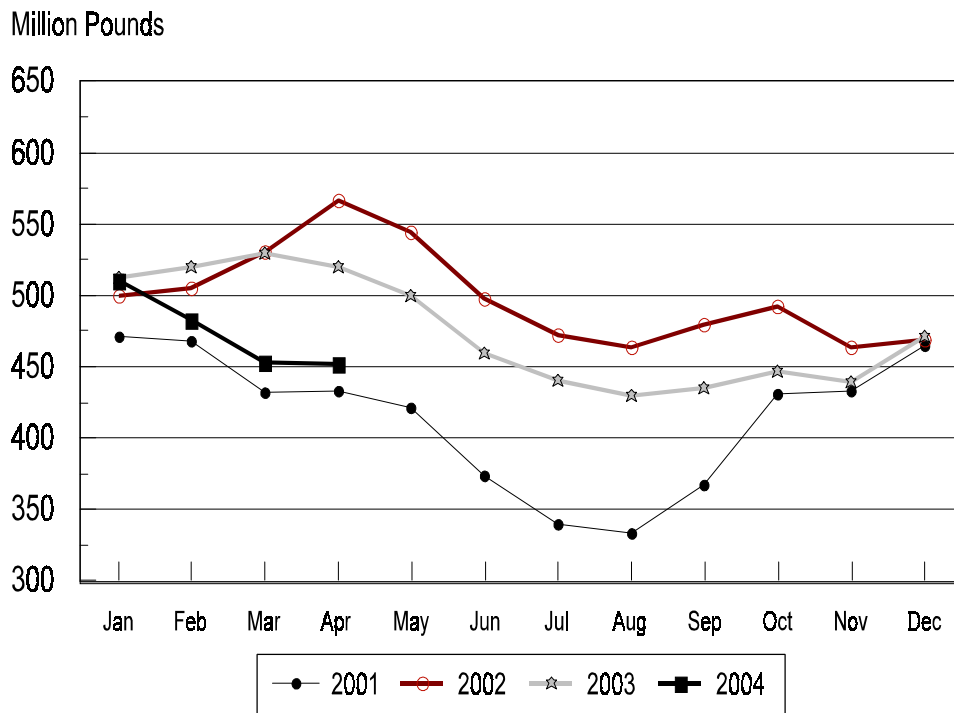
**Total frozen poultry supplies** on April 30, 2004 were 7 percent higher than the previous month, but were 10 percent lower than a year ago. Total stocks of chicken were up 6 percent from the previous month, but down 12 percent from last year. Total pounds of turkey in freezers were up 7 percent from last month, but down 6 percent from April 30, 2003.

This page is intentionally blank.

## Contents

	Page
Stocks in Cold Storage: By Commodity, United States, April 2004 .....	4
Stocks in Cold Storage: By Commodity, Region, and United States, March 31, 2004 .....	8
Stocks in Cold Storage: By Commodity, Region, and United States, April 30, 2004 .....	12
Public General Warehouses: Cold Storage Space Occupied by Region and United States, April 2004 .....	16
Apples in Cold Storage: By State and United States, April 30, 2004 and 2003 .....	17
Survey and Estimating Procedures, Revision Policy and Reliability .....	18
Access to Reports .....	19

## Total Frozen Pork-United States Cold Storage Stocks, 2001-2004



**Stocks in Cold Storage: By Commodity,  
United States, April 2004**

Commodity	Stocks in All Warehouses			Percent of		Public Warehouse Stocks
	Apr 30, 2003	Mar 31, 2004	Apr 30, 2004	Apr 2003	Mar 2004	Apr 30, 2004
	<i>1,000 Pounds</i>	<i>1,000 Pounds</i>	<i>1,000 Pounds</i>	<i>Percent</i>	<i>Percent</i>	<i>1,000 Lbs</i>
Apples						
Regular Storage	100,622	183,302	88,237	88	48	
Controlled Atmosphere	1,521,688	1,795,704	1,358,010	89	76	
Total	1,622,310	1,979,006	1,446,247	89	73	425
Pears						
Bartlett	75	2,395	2,052	2,736	86	
Other Varieties	87,504	136,617	79,305	91	58	
Total	87,579	139,012	81,357	93	59	2,001
Nuts						
Shelled						
Peanuts	341,006	333,671	370,441	109	111	
Pecans	41,771	32,692	33,206	79	102	
Other Shelled	165,412	154,331	150,781	91	98	
Total	548,189	520,694	554,428	101	106	245,593
In-Shell						
Peanuts	17,274	20,575	17,207	100	84	
Pecans	74,625	169,860	149,000	200	88	
Other In-Shell	7,983	9,127	5,831	73	64	
Total	99,882	199,562	172,038	172	86	62,675
Dairy Products						
Butter, Total	263,735	158,118	155,796	59	99	139,631
(Government Owned)	5,089	602	400	8	66	
Natural Cheese						
American, Total	534,718	520,803	527,839	99	101	
(Government Owned)	2,974	9,615	9,691	326	101	
Swiss	25,801	23,277	27,478	106	118	
Other Natural Cheese	220,586	215,466	215,292	98	100	
Total	781,105	759,546	770,609	99	101	409,278
Eggs, Frozen						
Whites	2,433	2,860	2,840	117	99	
Yolks	1,078	1,003	972	90	97	
Whole & Mixed	8,883	11,895	13,203	149	111	
Unclassified	3,349	3,489	3,914	117	112	
Total	15,743	19,247	20,929	133	109	20,698
Frozen Poultry						
Chicken						
Broilers, Fryers						
Roasters (Whole)	29,451	24,837	23,423	80	94	
Hens, Mature Chickens	4,757	4,681	4,387	92	94	
Breasts & Breast Meat		88,847	90,936		102	
Drumsticks		17,171	16,136		94	
Leg Quarters		106,200	126,338		119	
Legs		13,997	11,634		83	
Thigh & Thigh Quarters		7,028	8,161		116	
Thigh Meat <sup>1</sup>		15,516	15,417		99	
Wings <sup>2</sup>		24,281	26,552		109	
Paws and Feet		18,306	19,454		106	
Other		283,874	299,754		106	
Total Chicken	732,015	604,738	642,192	88	106	

See footnote(s) at end of table.

--continued

**Stocks in Cold Storage: By Commodity,  
United States, April 2004**

Commodity	Stocks in All Warehouses			Percent of		Public Warehouse Stocks
	Apr 30, 2003	Mar 31, 2004	Apr 30, 2004	Apr 2003	Mar 2004	Apr 30, 2004
	<i>1,000 Pounds</i>	<i>1,000 Pounds</i>	<i>1,000 Pounds</i>	<i>Percent</i>	<i>Percent</i>	<i>1,000 Lbs</i>
Turkeys						
Toms (Whole Carcasses)	159,329	151,384	154,083	97	102	
Hens (Whole Carcasses)	101,801	103,844	105,481	104	102	
Whole Turkeys	261,130	255,228	259,564	99	102	
Other Turkey	312,336	249,333	281,073	90	113	
Total Turkey	573,466	504,561	540,637	94	107	423,808
Ducks	6,043	1,246	1,020	17	82	
Total Poultry	1,311,524	1,110,545	1,183,849	90	107	1,025,559
Frozen Fruit						
Apples	59,767	55,604	56,718	95	102	
Apricots	2,325	4,285	4,324	186	101	
Blackberries, Total	13,288	15,849	12,935	97	82	
IQF	8,235	11,126	9,299	113	84	
Pails and Tubs	1,109	1,756	1,143	103	65	
Barrels, 400 lbs net	3,503	2,201	1,766	50	80	
Concentrate	441	766	727	165	95	
Blueberries	48,226	51,158	43,228	90	84	
Boysenberries	1,432	546	566	40	104	
Cherries, Tart (RTP)	27,782	41,893	32,281	116	77	
Cherries, Tart (Juice)	1,221	1,015	1,001	82	99	
Cherries, Sweet	6,247	5,534	4,967	80	90	
Grapes	5,255	5,487	4,171	79	76	
Peaches	36,028	43,404	34,094	95	79	
Raspberries, Black	1,328	743	564	42	76	
Raspberries, Red, Total	25,620	25,813	22,531	88	87	
IQF	11,051	13,602	11,863	107	87	
Pails and Tubs	5,607	5,735	5,300	95	92	
Barrels, 400 lbs net	8,279	5,744	4,594	55	80	
Concentrate	683	732	774	113	106	
Strawberries, Total	214,089	177,949	227,560	106	128	
IQF and Poly	106,435	79,438	99,542	94	125	
Pails and Tubs	67,578	59,605	67,253	100	113	
Barrels and Drums	21,626	31,794	48,055	222	151	
Juice Stock	18,450	7,112	12,710	69	179	
Other Frozen Fruit	302,847	286,429	260,144	86	91	
Total	745,455	715,709	705,084	95	99	613,573
Frozen Juice						
Orange Juice Conc. <sup>3</sup>	1,936,836	1,951,147	2,047,784	106	105	
(Gallon Equivalent)	195,719	197,165	206,930			
Other Juice Concentrate	280,085	349,055	328,850	117	94	
Total	2,216,921	2,300,202	2,376,634	107	103	244,906

See footnote(s) at end of table.

--continued

**Stocks in Cold Storage: By Commodity,  
United States, April 2004**

Commodity	Stocks in All Warehouses			Percent of		Public Warehouse Stocks
	Apr 30, 2003	Mar 31, 2004	Apr 30, 2004	Apr 2003	Mar 2004	Apr 30, 2004
	<i>1,000 Pounds</i>	<i>1,000 Pounds</i>	<i>1,000 Pounds</i>	<i>Percent</i>	<i>Percent</i>	<i>1,000 Lbs</i>
Frozen Vegetables						
Asparagus	5,284	6,435	7,365	139	114	
Limas, Fordhook	6,660	3,041	2,814	42	93	
Limas, Baby	28,385	33,405	29,583	104	89	
Green Beans, Reg. Cut	94,297	80,039	61,570	65	77	
Green Beans, Fr. Style	11,189	15,680	12,357	110	79	
Broccoli, Spears	51,620	40,269	44,321	86	110	
Broccoli, Chopped & Cut	80,315	52,822	55,345	69	105	
Brussels Sprouts	13,124	15,410	14,195	108	92	
Carrots, Diced	49,291	71,007	65,681	133	92	
Carrots, Other	97,543	109,696	98,288	101	90	
Cauliflower	23,865	19,182	15,628	65	81	
Corn, Cut	238,324	362,149	314,269	132	87	
Corn, Cob	159,158	194,069	163,019	102	84	
Mixed Vegetables	43,220	46,802	46,252	107	99	
Okra	28,824	21,607	18,347	64	85	
Onion Rings	5,718	6,420	5,927	104	92	
Onions, Other	29,907	30,304	33,475	112	110	
Blackeye Peas	4,163	3,367	3,509	84	104	
Green Peas	64,059	104,346	77,101	120	74	
Peas & Carrots Mixed	6,380	6,189	5,707	89	92	
Spinach	100,925	55,321	81,939	81	148	
Squash, Summer/Zucchini	29,071	31,602	26,718	92	85	
Southern Greens	23,879	18,710	19,220	80	103	
Other Vegetables	257,071	263,862	260,544	101	99	
Total	1,452,272	1,591,734	1,463,174	101	92	1,056,543
Potatoes						
French Fries	899,079	919,539	882,851	98	96	
Other Frozen	251,444	272,912	284,432	113	104	
Total	1,150,523	1,192,451	1,167,283	101	98	876,821

See footnote(s) at end of table.

--continued

**Stocks in Cold Storage: By Commodity,  
United States, April 2004 (Continued)**

Commodity	Stocks in All Warehouses			Percent of		Public Warehouse Stocks
	Apr 30, 2003	Mar 31, 2004	Apr 30, 2004	Apr 2003	Mar 2004	Apr 30, 2004
	<i>1,000 Pounds</i>	<i>1,000 Pounds</i>	<i>1,000 Pounds</i>	<i>Percent</i>	<i>Percent</i>	<i>1,000 Lbs</i>
<b>Meat</b>						
Frozen Beef						
Boneless <sup>4</sup>	336,561	364,544	368,711	110	101	
Beef Cuts <sup>5</sup>	53,092	52,228	53,144	100	102	
Total	389,653	416,772	421,855	108	101	419,418
(Government Owned)	1,932	5,733	5,098	264	89	
Frozen Pork						
Picnics, Bone-in	10,195	12,715	12,365	121	97	
Hams, Total	91,690	51,796	56,364	61	109	52,856
Bone-in	42,955	25,678	25,634	60	100	23,817
Boneless <sup>6</sup>	48,735	26,118	30,730	63	118	29,039
Bellies	48,542	50,126	46,109	95	92	
Loins, Total	38,164	39,253	36,111	95	92	32,461
Bone-in	17,510	22,591	20,224	115	90	
Boneless <sup>7</sup>	20,654	16,662	15,887	77	95	
Ribs <sup>8</sup>	92,877	74,032	68,988	74	93	
Butts	15,991	10,852	9,124	57	84	
Trimmings <sup>9</sup>	57,178	40,814	43,537	76	107	
Other <sup>10</sup>	68,581	78,435	79,736	116	102	
Variety Meats <sup>11</sup>	49,824	40,962	44,948	90	110	
Unclassified <sup>12</sup>	46,951	54,849	54,266	116	99	
Total	519,993	453,834	451,548	87	99	401,484
(Government Owned)	1,298	985	876	67	89	
Other						
Veal	4,972	5,889	5,602	113	95	
Lamb & Mutton	5,016	3,164	3,228	64	102	
Total	9,988	9,053	8,830	88	98	8,797
Canned						
Canned Hams	6,371	5,035	4,391	69	87	
Other Canned Meat	771	1,152	803	104	70	
Total	7,142	6,187	5,194	73	84	5,107
Total	926,776	885,846	887,427	96	100	834,806
<b>Miscellaneous</b>						
Cooler	626,681	674,450	616,775	98	91	279,721
Freezer	2,186,538	1,783,966	1,805,125	83	101	1,742,020
Total	2,813,219	2,458,416	2,421,900	86	99	2,021,741
<b>Commodities</b>						
Stored in Coolers	3,786,553	4,290,238	3,660,349	97	85	1,164,304
Stored in Freezers	10,248,680	9,739,850	9,746,406	95	100	6,549,450
Total	14,035,233	14,030,088	13,406,755	96	96	7,713,754

<sup>1</sup> Boneless.

<sup>2</sup> All Products.

<sup>3</sup> Adjusted to 42.0 degrees Brix equivalent (9.896 pounds per gallon).

<sup>4</sup> Includes all boxed boneless beef, such as ground beef, roasts, steaks, loins, strips, rounds, trimmings, etc. Variety meats (edible offal), such as tongues, livers, hearts, kidneys, and other organs removed from slaughtered beef, are included as miscellaneous freezer stocks.

<sup>5</sup> Includes all boxed primal beef cuts, bone-in.

<sup>6</sup> Includes full ham, bone removed and individual muscles separated.

<sup>7</sup> Includes pork tenderloins.

<sup>8</sup> Includes spareribs and backribs.

<sup>9</sup> Includes 42% regular trimmings, 72% special trimmings, boneless picnic meat, jowls, neckbone trimmings, blade, cheek, head, and shank meat, etc. Packaged bacon, sausage, and processed items, such as hot dogs and luncheon meats, are included in miscellaneous cooler or freezer stocks.

<sup>10</sup> Includes ears, tails, feet, neckbones and snouts.

<sup>11</sup> Includes tongues, kidneys, livers, stomachs, hearts, chitterlings, salivary glands, and other organs removed from slaughtered hogs.

<sup>12</sup> Includes product unable to be classified elsewhere in this report.

**Stocks in Cold Storage: By Commodity, Region,  
and United States, March 31, 2004**

Commodity	New England	Middle Atlantic	East North Central	West North Central	South Atlantic
	<i>1,000 Pounds</i>	<i>1,000 Pounds</i>	<i>1,000 Pounds</i>	<i>1,000 Pounds</i>	<i>1,000 Pounds</i>
Total Fresh Apples	11,340	284,631	122,704		122,214
Nuts					
Shelled					
Peanuts		778	244	22	218,466
Pecans <sup>1</sup>		87			11,944
In-Shell					
Pecans <sup>1</sup>					31,169
Dairy Products					
Natural Cheese					
American, Total	23,236	51,553	205,291	113,140	4,358
Other Natural Cheese	382	16,024	126,127	53,556	1,315
Frozen Poultry					
Chicken					
Broilers, Fryers					
Roasters (Whole)		1,923	375	1,008	4,252
Hens, Mature Chickens	27	266	31	251	478
Other	878	14,106	12,261	31,259	190,700
Total Chicken	905	16,295	12,667	32,518	195,430
Turkeys					
Whole Turkeys	526	5,348	1,130	64,038	62,568
Other Turkey	288	8,859	16,856	60,986	107,538
Total Turkey	814	14,207	17,986	125,024	170,106
Ducks		467	569		86
Total Poultry	1,719	30,969	31,222	157,542	365,622
Frozen Fruit					
Apples	29	17,385	28,050	66	464
Blueberries	11,677	6,171	20,425	1,430	980
Cherries, Tart (RTP)	1	2,922	32,487	68	942
Cherries, Sweet		151	2,571	859	25
Peaches	24	2,558	4,716	2,836	402
Raspberries, Red	32	701	791	447	195
Strawberries, Total	75	6,669	8,630	5,526	2,938
Other Frozen Fruit	76	12,056	178,585	2,517	3,354

See footnote(s) at end of table.

--continued



**Stocks in Cold Storage: By Commodity, Region,  
and United States, March 31, 2004 (continued)**

Commodity	East South Central	West South Central	Mountain	Pacific	US Total
	<i>1,000 Pounds</i>	<i>1,000 Pounds</i>	<i>1,000 Pounds</i>	<i>1,000 Pounds</i>	<i>1,000 Pounds</i>
Total Fresh Apples		6,610	5,568	1,425,939	1,979,006
Nuts					
Shelled					
Peanuts	33,618	80,250	90	203	333,671
Pecans <sup>1</sup>	1,258	19,305		98	32,692
In-Shell					
Pecans <sup>1</sup>	2,548	136,143			169,860
Dairy Products					
Natural Cheese					
American, Total	215	2,230	23,651	97,129	520,803
Other Natural Cheese	2,324	186	3,911	11,641	215,466
Frozen Poultry					
Chicken					
Broilers, Fryers					
Roasters (Whole)	4,931	9,631	236	2,481	24,837
Hens, Mature Chickens	327	2,342	4	955	4,681
Other	123,072	175,140	3,563	24,241	575,220
Total Chicken	128,330	187,113	3,803	27,677	604,738
Turkeys					
Whole Turkeys	2,352	92,697	5,969	20,600	255,228
Other Turkey	1,013	23,074	9,584	21,135	249,333
Total Turkey	3,365	115,771	15,553	41,735	504,561
Ducks	23	44	29	28	1,246
Total Poultry	131,718	302,928	19,385	69,440	1,110,545
Frozen Fruit					
Apples	65	1,276	79	8,190	55,604
Blueberries	181	721	56	9,517	51,158
Cherries, Tart (RTP)		182	1,006	4,285	41,893
Cherries, Sweet	1	36	531	1,360	5,534
Peaches	34	975	54	31,805	43,404
Raspberries, Red	168	161	13	23,305	25,813
Strawberries, Total	1,019	14,946	109	138,037	177,949
Other Frozen Fruit	131	9,238	3,539	76,933	286,429

See footnote(s) at end of table.

--continued

**Stocks in Cold Storage: By Commodity, Region,  
and United States, March 31, 2004 (continued)**

Commodity	New England	Middle Atlantic	East North Central	West North Central	South Atlantic
	<i>1,000 Pounds</i>	<i>1,000 Pounds</i>	<i>1,000 Pounds</i>	<i>1,000 Pounds</i>	<i>1,000 Pounds</i>
Frozen Juice					
Orange Juice Conc. <sup>2</sup>	145		895	166	1,878,291
Other Juice Concentrate	52,457	25,949	17,012	1,122	112,479
Frozen Vegetables <sup>3</sup>					
Asparagus		703	3,164	43	168
Limas, Fordhook		890	443		297
Limas, Baby		4,569	1,829	1	4,432
Green Beans, Reg. Cut		12,856	19,697	890	7,720
Green Beans, Fr. Style		3,287	3,657	201	1,102
Broccoli, Spears		4,768	4,369		3,161
Broccoli, Chopped & Cut		4,343	4,745	4,753	6,745
Brussels Sprouts		2,138	1,296	1	1,421
Carrots, Diced		8,673	19,939	332	4,998
Carrots, Other		11,312	15,462	387	6,652
Cauliflower		2,818	3,007	22	958
Corn, Cut		29,272	58,276	29,628	16,634
Corn, Cob		13,719	27,999	15,781	8,756
Mixed Vegetables		5,295	7,646	116	2,556
Okra		895	352		3,091
Onion Rings		231	2,990	734	915
Onions, Other		5,133	5,594	230	1,695
Blackeye Peas		471	59		1,626
Green Peas		11,742	12,742	7,692	4,279
Peas & Carrots Mixed		1,175	1,002	1	543
Spinach		6,376	2,497	56	3,357
Squash, Summer/Zucchini		2,858	8,128		3,557
Southern Greens		2,285	413		4,640
Other Vegetables		32,890	35,128	7,975	19,313
Potatoes					
French Fries	32,686	23,587	57,207	99,422	22,705
Other Frozen	4,977	14,737	35,096	5,723	3,145
Meat					
Frozen Beef					
Boneless <sup>4</sup>	1,127	51,785	40,963	111,555	28,049
Beef Cuts <sup>5</sup>	190	2,114	10,596	8,100	3,051
Frozen Pork					
Ribs <sup>6</sup>	291	1,699	17,091	33,819	9,177
Trimmings <sup>7</sup>		396	11,793	22,239	1,755
Other <sup>8</sup>	1,850	789	13,726	34,681	12,681
Other					
Veal		1,169	1,586	180	56
Lamb & Mutton		386	674	73	653

See footnote(s) at end of table.

--continued

**Stocks in Cold Storage: By Commodity, Region,  
and United States, March 31, 2004 (continued)**

Commodity	East South Central	West South Central	Mountain	Pacific	US Total
	<i>1,000 Pounds</i>	<i>1,000 Pounds</i>	<i>1,000 Pounds</i>	<i>1,000 Pounds</i>	<i>1,000 Pounds</i>
Frozen Juice					
Orange Juice Concentrate	37	2,141	112	69,360	1,951,147
Other Juice Concentrate	148	16,338	1,289	122,261	349,055
Frozen Vegetables <sup>3</sup>					
Asparagus		403	2	1,952	6,435
Limas, Fordhook		118	3	1,290	3,041
Limas, Baby		1,159	4,754	16,661	33,405
Green Beans, Reg. Cut		1,236	398	37,242	80,039
Green Beans, Fr. Style		245	15	7,173	15,680
Broccoli, Spears		15,352	775	11,844	40,269
Broccoli, Chopped & Cut		12,089	337	19,810	52,822
Brussels Sprouts		242	8	10,304	15,410
Carrots, Diced		999	20	36,046	71,007
Carrots, Other		9,908	194	65,781	109,696
Cauliflower		2,733	21	9,623	19,182
Corn, Cut		1,883	1,786	224,670	362,149
Corn, Cob		1,105	57	126,652	194,069
Mixed Vegetables		5,368	14	25,807	46,802
Okra		16,689		580	21,607
Onion Rings		669	487	394	6,420
Onions, Other		1,552	2,378	13,722	30,304
Blackeye Peas		647		564	3,367
Green Peas		2,468	8,322	57,101	104,346
Peas & Carrots Mixed		494	34	2,940	6,189
Spinach		11,734	123	31,178	55,321
Squash, Summer/Zucchini		3,938	474	12,647	31,602
Southern Greens		10,386		986	18,710
Other Vegetables		32,647	6,697	129,212	263,862
Potatoes					
French Fries	6,999	12,409	186,480	478,044	919,539
Other Frozen	1,425	24,456	46,156	137,197	272,912
Meat					
Frozen Beef					
Boneless <sup>4</sup>	2,511	73,999	6,778	47,777	364,544
Beef Cuts <sup>5</sup>	4,032	7,524	8,372	8,249	52,228
Frozen Pork					
Ribs <sup>6</sup>	3,537	4,614	352	3,452	74,032
Trimmings <sup>7</sup>	376	3,756	13	486	40,814
Other <sup>8</sup>	9,683	3,039	402	1,584	78,435
Other					
Veal		340		2,558	5,889
Lamb & Mutton		240	41	1,097	3,164

<sup>1</sup> East North Central combined with South Atlantic. Mountain and West North Central combined with West South Central.

<sup>2</sup> Middle Atlantic combined with South Atlantic.

<sup>3</sup> New England combined with Middle Atlantic. East South Central combined with South Atlantic.

<sup>4</sup> Includes all boxed boneless beef, such as ground beef, roasts, steaks, loins, strips, rounds, trimmings, etc. Variety meats (edible offal), such as tongues, livers, hearts, kidneys, and other organs removed from slaughtered beef, are included as miscellaneous freezer stocks.

<sup>5</sup> Includes all boxed primal beef cuts, bone-in.

<sup>6</sup> Includes spareribs and backribs.

<sup>7</sup> Includes 42% regular trimmings, 72% special trimmings, boneless picnic meat, jowls, neckbone trimmings, blade, cheek, head, and shank meat, etc. Packaged bacon, sausage, and processed items, such as hot dogs and luncheon meats, are included in miscellaneous cooler or freezer stocks.

<sup>8</sup> Includes ears, tails, feet, neckbones and snouts.

<sup>9</sup> Includes tongues, kidneys, livers, stomachs, hearts, chitterlings, salivary glands, and other organs removed from slaughtered hogs.

<sup>10</sup> Includes product unable to be classified elsewhere in this report.

**Stocks in Cold Storage: By Commodity, Region,  
and United States, April 30, 2004**

Commodity	New England	Middle Atlantic	East North Central	West North Central	South Atlantic
	<i>1,000 Pounds</i>	<i>1,000 Pounds</i>	<i>1,000 Pounds</i>	<i>1,000 Pounds</i>	<i>1,000 Pounds</i>
Total Fresh Apples	5,444	212,204	88,398		83,713
Nuts					
Shelled					
Peanuts		692	177	24	249,681
Pecans <sup>1</sup>		129			11,004
In-Shell					
Pecans <sup>1</sup>					25,727
Dairy Products					
Natural Cheese					
American, Total	24,490	54,318	208,238	113,522	7,014
Other Natural Cheese	381	16,642	125,610	52,759	1,326
Frozen Poultry					
Chicken					
Broilers, Fryers					
Roasters (Whole)		1,752	296	964	4,652
Hens, Mature Chickens	25	229	83	219	438
Other	902	15,211	12,587	30,853	198,828
Total Chicken	927	17,192	12,966	32,036	203,918
Turkeys					
Whole Turkeys	567	8,180	1,234	62,554	62,653
Other Turkey	274	8,337	19,638	68,583	123,581
Total Turkey	841	16,517	20,872	131,137	186,234
Ducks	1	371	419	1	114
Total Poultry	1,769	34,080	34,257	163,174	390,266
Frozen Fruit					
Apples	26	17,516	28,094	93	604
Blueberries	9,824	4,946	16,487	1,222	608
Cherries, Tart (RTP)	1	2,067	25,202	46	725
Cherries, Sweet	1	139	2,202	814	22
Peaches	18	1,949	4,430	2,375	324
Raspberries, Red	29	696	841	375	152
Strawberries, Total	44	6,491	8,593	2,050	3,249
Other Frozen Fruit	79	11,873	159,592	2,534	2,981

See footnote(s) at end of table.

--continued

**Stocks in Cold Storage: By Commodity, Region,  
and United States, April 30, 2004 (continued)**

Commodity	East South Central	West South Central	Mountain	Pacific	US Total
	<i>1,000 Pounds</i>	<i>1,000 Pounds</i>	<i>1,000 Pounds</i>	<i>1,000 Pounds</i>	<i>1,000 Pounds</i>
Total Fresh Apples		3,990	4,644	1,047,854	1,446,247
Nuts					
Shelled					
Peanuts	30,478	89,097	80	212	370,441
Pecans <sup>1</sup>	1,377	20,599		97	33,206
In-Shell					
Pecans <sup>1</sup>	3,226	120,047			149,000
Dairy Products					
Natural Cheese					
American, Total	195	2,173	25,944	91,945	527,839
Other Natural Cheese	2,458	132	3,767	12,217	215,292
Frozen Poultry					
Chicken					
Broilers, Fryers					
Roasters (Whole)	3,790	9,393	224	2,352	23,423
Hens, Mature Chickens	281	2,221	3	888	4,387
Other	143,682	182,631	3,490	26,198	614,382
Total Chicken	147,753	194,245	3,717	29,438	642,192
Turkeys					
Whole Turkeys	2,476	93,494	7,072	21,334	259,564
Other Turkey	1,358	27,607	12,083	19,612	281,073
Total Turkey	3,834	121,101	19,155	40,946	540,637
Ducks	19	43	29	23	1,020
Total Poultry	151,606	315,389	22,901	70,407	1,183,849
Frozen Fruit					
Apples	55	1,288	80	8,962	56,718
Blueberries	189	675	145	9,132	43,228
Cherries, Tart (RTP)		85	772	3,383	32,281
Cherries, Sweet	1	37	469	1,282	4,967
Peaches	14	812	46	24,126	34,094
Raspberries, Red	151	173	286	19,828	22,531
Strawberries, Total	1,000	14,960	49	191,124	227,560
Other Frozen Fruit	167	8,485	3,626	70,807	260,144

See footnote(s) at end of table.

--continued

**Stocks in Cold Storage: By Commodity, Region,  
and United States, April 30, 2004 (continued)**

Commodity	New England	Middle Atlantic	East North Central	West North Central	South Atlantic
	<i>1,000 Pounds</i>	<i>1,000 Pounds</i>	<i>1,000 Pounds</i>	<i>1,000 Pounds</i>	<i>1,000 Pounds</i>
Frozen Juice					
Orange Juice Conc. <sup>2</sup>	112		1,069	189	1,970,377
Other Juice Concentrate	43,019	25,166	15,237	1,171	107,306
Frozen Vegetables <sup>3</sup>					
Asparagus		691	3,198	62	376
Limas, Fordhook		834	548		303
Limas, Baby		4,164	1,796		3,902
Green Beans, Reg. Cut		9,307	13,972	802	6,010
Green Beans, Fr. Style		3,150	2,649	153	1,009
Broccoli, Spears		5,800	6,130		3,340
Broccoli, Chopped & Cut		5,010	5,592	5,837	7,225
Brussels Sprouts		1,918	1,382		1,938
Carrots, Diced		8,097	18,804	208	4,521
Carrots, Other		9,768	13,199	515	5,817
Cauliflower		2,461	2,319	84	1,181
Corn, Cut		25,304	51,295	25,013	14,407
Corn, Cob		12,975	23,230	11,990	7,743
Mixed Vegetables		4,414	7,400	25	2,422
Okra		837	311		3,093
Onion Rings		255	3,155	689	316
Onions, Other		4,744	5,388	314	2,489
Blackeye Peas		418	61		1,372
Green Peas		10,201	9,557	4,111	3,354
Peas & Carrots Mixed		1,001	1,075	1	633
Spinach		9,327	3,259	95	4,274
Squash, Summer/Zucchini		2,683	6,685		3,418
Southern Greens		1,979	387		4,013
Other Vegetables		31,756	33,163	8,122	18,081
Potatoes					
French Fries	31,365	24,372	59,941	93,819	25,101
Other Frozen	5,058	13,115	42,306	5,361	3,506
Meat					
Frozen Beef					
Boneless <sup>4</sup>	1,097	56,759	41,870	111,854	28,553
Beef Cuts <sup>5</sup>	195	2,431	9,292	7,790	2,987
Frozen Pork					
Ribs <sup>6</sup>	257	1,833	14,528	31,726	9,325
Trimmings <sup>7</sup>		403	12,527	24,471	1,291
Other <sup>8</sup>	1,891	908	12,889	36,201	13,470
Other					
Veal		1,194	1,473	171	42
Lamb & Mutton		379	637	120	570

See footnote(s) at end of table.

--continued

**Stocks in Cold Storage: By Commodity, Region,  
and United States, April 30, 2004 (continued)**

Commodity	East South Central	West South Central	Mountain	Pacific	US Total
	<i>1,000 Pounds</i>	<i>1,000 Pounds</i>	<i>1,000 Pounds</i>	<i>1,000 Pounds</i>	<i>1,000 Pounds</i>
Frozen Juice					
Orange Juice Concentrate	39	2,225	121	73,652	2,047,784
Other Juice Concentrate	179	16,448	953	119,371	328,850
Frozen Vegetables <sup>3</sup>					
Asparagus		296	6	2,736	7,365
Limas, Fordhook		122	2	1,005	2,814
Limas, Baby		1,391	4,171	14,159	29,583
Green Beans, Reg. Cut		1,138	391	29,950	61,570
Green Beans, Fr. Style		189	15	5,192	12,357
Broccoli, Spears		16,772	874	11,405	44,321
Broccoli, Chopped & Cut		12,365	388	18,928	55,345
Brussels Sprouts		259	4	8,694	14,195
Carrots, Diced		1,481	19	32,551	65,681
Carrots, Other		10,016	174	58,799	98,288
Cauliflower		2,162	49	7,372	15,628
Corn, Cut		1,995	1,056	195,199	314,269
Corn, Cob		1,100	53	105,928	163,019
Mixed Vegetables		5,527	7	26,457	46,252
Okra		13,623		483	18,347
Onion Rings		628	584	300	5,927
Onions, Other		1,907	2,629	16,004	33,475
Blackeye Peas		1,214		444	3,509
Green Peas		2,033	7,064	40,781	77,101
Peas & Carrots Mixed		486	34	2,477	5,707
Spinach		10,687	88	54,209	81,939
Squash, Summer/Zucchini		3,431	945	9,556	26,718
Southern Greens		11,921		920	19,220
Other Vegetables		30,096	6,693	132,633	260,544
Potatoes					
French Fries	6,625	12,522	182,791	446,315	882,851
Other Frozen	1,343	25,597	47,840	140,306	284,432
Meat					
Frozen Beef					
Boneless <sup>4</sup>	3,264	71,482	6,828	47,004	368,711
Beef Cuts <sup>5</sup>	4,480	7,842	9,229	8,898	53,144
Frozen Pork					
Ribs <sup>6</sup>	4,100	4,411	245	2,563	68,988
Trimming <sup>7</sup>	319	3,995	9	522	43,537
Other <sup>8</sup>	9,935	2,898	293	1,251	79,736
Other					
Veal		283		2,439	5,602
Lamb & Mutton		186	26	1,310	3,228

<sup>1</sup> East North Central combined with South Atlantic. Mountain and West North Central Combined with West South Central.

<sup>2</sup> Middle Atlantic combined with South Atlantic.

<sup>3</sup> New England combined with Middle Atlantic. East South Central combined with South Atlantic.

<sup>4</sup> Includes all boxed boneless beef, such as ground beef, roasts, steaks, loins, strips, rounds, trimmings, etc. Variety meats (edible offal), such as tongues, livers, hearts, kidneys, and other organs removed from slaughtered beef, are included as miscellaneous freezer stocks.

<sup>5</sup> Includes all boxed primal beef cuts, bone-in.

<sup>6</sup> Includes spareribs and backribs.

<sup>7</sup> Includes 42% regular trimmings, 72% special trimmings, boneless picnic meat, jowls, neckbone trimmings, blade, cheek, head, and shank meat, etc. Packaged bacon, sausage, and processed items, such as hot dogs and luncheon meats, are included in miscellaneous cooler or freezer stocks.

<sup>8</sup> Includes ears, tails, feet, neckbones and snouts.

<sup>9</sup> Includes tongues, kidneys, livers, stomachs, hearts, chitterlings, salivary glands, and other organs removed from slaughtered hogs.

<sup>10</sup> Includes product unable to be classified elsewhere in this report.

**Public General Warehouses: Cold Storage Space Occupied  
by Region and United States, April 2004**

Region	Cooler				Freezer			
	Usable Space	Usable Space Occupied			Usable Space	Usable Space Occupied		
	Apr 30 2004	Apr 30 2003	Mar 31 2004	Apr 30 2004	Apr 30 2004	Apr 30 2003	Mar 31 2004	Apr 30 2004
	<i>1,000 Cu Ft</i>	<i>Percent</i>	<i>Percent</i>	<i>Percent</i>	<i>1,000 Cu Ft</i>	<i>Percent</i>	<i>Percent</i>	<i>Percent</i>
New England	1,741	60	86	75	15,747	57	73	70
Middle Atlantic	46,611	52	55	54	136,128	52	52	52
E. North Central	57,193	50	49	50	219,068	45	50	49
W. North Central	46,173	38	37	37	160,060	56	56	55
South Atlantic	51,548	30	27	31	198,920	49	50	52
E. South Central	9,788	40	47	45	71,316	39	36	42
W. South Central	29,184	30	23	30	137,473	48	47	45
Mountain	12,161	45	37	43	60,185	52	62	62
Pacific	54,457	39	35	38	317,983	52	60	59
US	308,856	41	39	41	1,316,880	50	53	53

## Cold Storage Regions





**Apples in Cold Storage: By State  
and United States, April 2004**

State	All Warehouses		
	Apr 30, 2003	Mar 31, 2004	Apr 30 2004
	<i>1,000 Pounds</i>	<i>1,000 Pounds</i>	
CA	9,649	24,897	18,052
MI	22,467	119,642	87,284
N ENG	5,920	11,340	5,444
NY	89,460	158,634	128,184
OH	645	2,260	990
OR	13,508	14,244	11,470
PA	77,751	125,997	84,020
VA	34,508	73,452	56,404
WA	1,341,354	1,386,798	1,018,332
WV	15,814	37,199	19,550
Other States	11,234	24,543	16,517
US	1,622,310	1,979,006	1,446,247

**Survey Procedures:** Questionnaires are mailed about the 24th of each month to all operators on the list of approximately 1,400 public and private cold storage warehouses. In addition, apple data are obtained from special surveys and other sources (State Departments of Agriculture, U.S. Apple Association, etc.). All survey data represent stocks as of the end of the month.

Data are collected from warehouses artificially cooled to a temperature of 50 degrees Fahrenheit or lower, and whose food products are normally stored for 30 days or more. All food items in these facilities are reported regardless of the number of days stored at the time of the report. Also included are specialized storage facilities meeting the 30 day requirement, such as fruit houses, dairy manufacturing plants, frozen fruit, fruit juice, and vegetable processors, and poultry and meat packing plants. Excluded are stocks in space maintained by wholesalers, jobbers, distributors, chain stores, locker plants containing individual lockers, meat packer branch houses, and frozen food processors whose entire inventories are turned over more than once a month.

**Estimating Procedures:** Data for reporting firms are added to estimates for non-reporting firms to obtain regional and National totals. Estimates for non-reporting firms are obtained by multiplying the previous month's figure by a percent change from the previous month. The percent change is calculated for each item from totals of the current and previous month summed from firms that reported both months.

**Revision Policy:** Data are revised the following month based on late reports or corrected data. Final figures are published in the annual summary in February of the following year.

**Reliability:** Reports are received from 900 firms each month which represent about 70 percent of the total capacity. Firms that are not on the list or firms who have never reported are not represented in the data. Monthly data can vary due to different firms reporting month to month. Survey data are also subject to non-sampling errors such as omissions and mistakes in reporting and in processing the data. While these errors cannot be measured directly, they are minimized by carefully reviewing all reported data for consistency and reasonableness.

## ACCESS TO REPORTS!!

---

For your convenience, there are several ways to obtain NASS reports, data products, and services:

### INTERNET ACCESS

All NASS reports are available free of charge on the worldwide Internet. For access, connect to the Internet and go to the NASS Home Page at: [www.usda.gov/nass/](http://www.usda.gov/nass/). Select "Today's Reports" or Publications and then Reports Calendar or Publications and then Search, by Title or Subject.

### E-MAIL SUBSCRIPTION

All NASS reports are available by subscription free of charge direct to your e-mail address. Starting with the NASS Home Page at [www.usda.gov/nass/](http://www.usda.gov/nass/), click on **Publications**, then click on the **Subscribe by E-mail** button which takes you to the page describing e-mail delivery of reports. Finally, click on **Go to the Subscription Page** and follow the instructions.

-----

### PRINTED REPORTS OR DATA PRODUCTS

**CALL OUR TOLL-FREE ORDER DESK: 800-999-6779 (U.S. and Canada)**  
**Other areas, please call 703-605-6220      FAX: 703-605-6900**  
**(Visa, MasterCard, check, or money order acceptable for payment.)**

-----

### ASSISTANCE

For **assistance** with general agricultural statistics or further information about NASS or its products or services, contact the **Agricultural Statistics Hotline** at **800-727-9540**, 7:30 a.m. to 4:00 p.m. ET, or e-mail: [nass@nass.usda.gov](mailto:nass@nass.usda.gov).

---

The United States Department of Agriculture (USDA) prohibits discrimination in all its programs on the basis of race, color, national origin, gender, religion, age, disability, political beliefs, sexual orientation, and marital or family status. (Not all prohibited bases apply to all programs.) Persons with disabilities who require alternative means for communication of program information (braille, large print, audiotape, etc.) should contact the USDA's TARGET Center at 202-720-2600 (voice and TDD).

To file a complaint of discrimination, write USDA, Director, Office of Civil Rights, Room 326-W, Whitten Building, 1400 Independence Avenue, SW, Washington, D.C., 20250-9410, or call 202-720-5964 (voice or TDD). USDA is an equal opportunity provider and employer.