



Cold Storage

Released June 21, 2004, by the National Agricultural Statistics Service (NASS), Agricultural Statistics Board, U.S. Department of Agriculture. For information on *Cold Storage* call Perry Game at (202) 720-8784, office hours 7:00 a.m. to 4:00 p.m. ET.

Highlights

Frozen food stocks in refrigerated warehouses on May 31, 2004 were greater than year earlier levels for frozen eggs, orange juice, potatoes, beef, cheese and vegetables.

Butter stocks were up 16 percent from last month, but down 39 percent from a year ago.

Total red meat supplies in freezers were down 7 percent from last month and down 8 percent from last year. Frozen pork supplies were down 8 percent from last month and down 16 percent from the previous year. Stocks of pork bellies were down 14 percent from last month and down 10 percent from last year.

Total frozen poultry supplies on May 31, 2004 were 4 percent higher than the previous month, but 8 percent lower than a year ago. Total stocks of chicken were up 4 percent from the previous month, but 2 percent below last year. Total pounds of turkey in freezers were up 3 percent from last month, but down 14 percent from May 31, 2003.

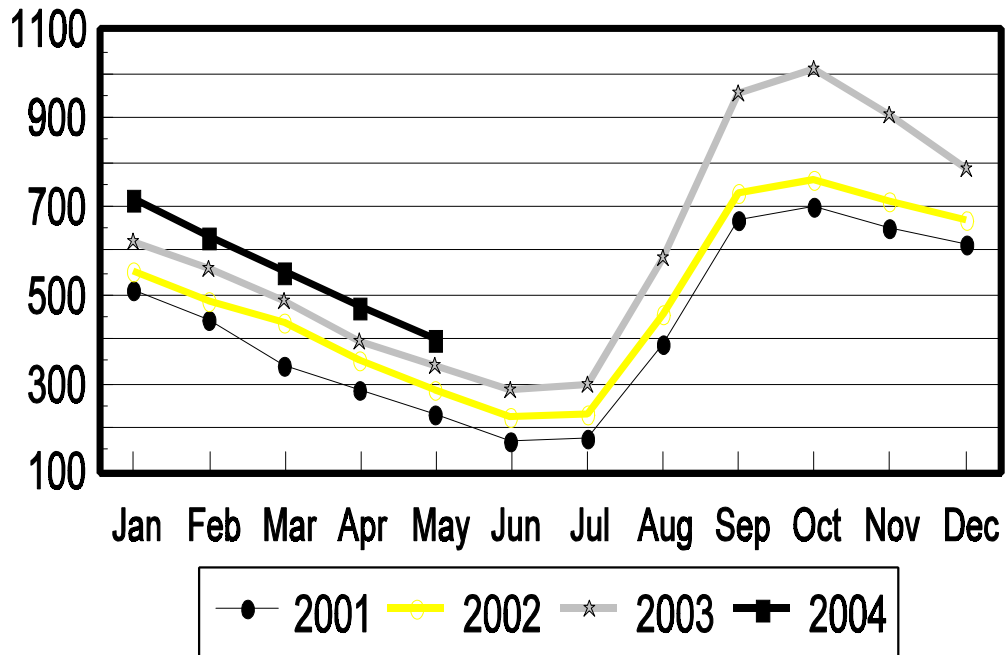
This page is intentionally blank.

Contents

	Page
Stocks in Cold Storage: By Commodity, United States, May 2004	4
Stocks in Cold Storage: By Commodity, Region, and United States, April 30, 2004	8
Stocks in Cold Storage: By Commodity, Region, and United States, May 31, 2004	12
Public General Warehouses: Cold Storage Space Occupied by Region and United States, May 2004	16
Survey and Estimating Procedures, Revision Policy and Reliability	17
Access to Reports	18

Total Frozen Corn-United States Cold Storage Stocks, 2001-2004

Million Pounds



**Stocks in Cold Storage: By Commodity,
United States, May 2004**

Commodity	Stocks in All Warehouses			Percent of		Public Warehouse Stocks
	May 31, 2003	Apr 30, 2004	May 31, 2004	May 2003	Apr 2004	May 31, 2004
	<i>1,000 Pounds</i>	<i>1,000 Pounds</i>	<i>1,000 Pounds</i>	<i>Percent</i>	<i>Percent</i>	<i>1,000 Lbs</i>
Apples						
Regular Storage	22,691	89,851	21,812	96	24	
Controlled Atmosphere	1,081,967	1,358,010	902,068	83	66	
Total	1,104,658	1,447,861	923,880	84	64	438
Pears						
Bartlett	60	2,052	6	10		
Other Varieties	35,985	79,305	44,273	123	56	
Total	36,045	81,357	44,279	123	54	6
Nuts						
Shelled						
Peanuts	399,320	375,658	385,624	97	103	
Pecans	42,360	32,480	36,349	86	112	
Other Shelled	174,640	150,783	145,057	83	96	
Total	616,320	558,921	567,030	92	101	262,098
In-Shell						
Peanuts	22,296	22,215	27,286	122	123	
Pecans	58,277	145,237	120,491	207	83	
Other In-Shell	7,412	5,831	6,858	93	118	
Total	87,985	173,283	154,635	176	89	58,763
Dairy Products						
Butter, Total	297,959	155,718	180,741	61	116	164,231
(Government Owned)	8,938	400	255	3	64	
Natural Cheese						
American, Total	538,513	528,510	558,832	104	106	
(Government Owned)	2,543	9,691	9,858	388	102	
Swiss	26,596	26,989	27,351	103	101	
Other Natural Cheese	225,928	214,271	216,967	96	101	
Total	791,037	769,770	803,150	102	104	434,512
Eggs, Frozen						
Whites	2,664	2,837	2,728	102	96	
Yolks	815	966	1,146	141	119	
Whole & Mixed	10,548	13,193	12,423	118	94	
Unclassified	3,672	3,910	4,175	114	107	
Total	17,699	20,906	20,472	116	98	20,128
Frozen Poultry						
Chicken						
Broilers, Fryers						
Roasters (Whole)	30,844	23,295	23,808	77	102	
Hens, Mature Chickens	4,980	4,387	3,600	72	82	
Breasts & Breast Meat		91,045	88,521		97	
Drumsticks		16,508	11,995		73	
Leg Quarters		126,925	116,356		92	
Legs		11,631	10,019		86	
Thigh & Thigh Quarters		8,156	6,633		81	
Thigh Meat ¹		15,018	16,045		107	
Wings ²		26,500	28,891		109	
Paws and Feet		19,453	23,115		119	
Other		302,903	341,496		113	
Total Chicken	687,241	645,821	670,479	98	104	

See footnote(s) at end of table.

--continued

**Stocks in Cold Storage: By Commodity,
United States, May 2004**

Commodity	Stocks in All Warehouses			Percent of		Public Warehouse Stocks
	May 31, 2003	Apr 30, 2004	May 31, 2004	May 2003	Apr 2004	May 31, 2004
	<i>1,000 Pounds</i>	<i>1,000 Pounds</i>	<i>1,000 Pounds</i>	<i>Percent</i>	<i>Percent</i>	<i>1,000 Lbs</i>
Turkeys						
Toms (Whole Carcasses)	184,323	159,060	167,382	91	105	
Hens (Whole Carcasses)	115,674	108,611	116,498	101	107	
Whole Turkeys	299,997	267,671	283,880	95	106	
Other Turkey	358,842	281,102	283,756	79	101	
Total Turkey	658,839	548,773	567,636	86	103	443,445
Ducks	5,995	1,020	1,020	17	100	
Total Poultry	1,352,075	1,195,614	1,239,135	92	104	1,070,159
Frozen Fruit						
Apples	58,878	56,921	53,869	91	95	
Apricots	1,837	4,367	2,762	150	63	
Blackberries, Total	9,416	12,235	10,350	110	85	
IQF	5,522	8,604	7,849	142	91	
Pails and Tubs	851	1,230	982	115	80	
Barrels, 400 lbs net	2,373	1,674	944	40	56	
Concentrate	670	727	575	86	79	
Blueberries	35,299	43,190	37,500	106	87	
Boysenberries	1,119	563	793	71	141	
Cherries, Tart (RTP)	18,375	32,281	23,962	130	74	
Cherries, Tart (Juice)	1,160	1,001	977	84	98	
Cherries, Sweet	4,834	4,985	5,205	108	104	
Grapes	5,314	4,172	4,042	76	97	
Peaches	25,697	34,341	26,238	102	76	
Raspberries, Black	1,143	622	526	46	85	
Raspberries, Red, Total	20,407	22,508	18,602	91	83	
IQF	9,997	11,830	11,186	112	95	
Pails and Tubs	4,155	5,307	3,767	91	71	
Barrels, 400 lbs net	5,595	4,597	2,990	53	65	
Concentrate	660	774	659	100	85	
Strawberries, Total	269,761	227,417	313,127	116	138	
IQF and Poly	117,558	99,398	150,668	128	152	
Pails and Tubs	91,456	67,245	74,942	82	111	
Barrels and Drums	32,023	48,062	72,369	226	151	
Juice Stock	28,724	12,712	15,148	53	119	
Other Frozen Fruit	279,266	260,202	238,720	85	92	
Total	732,506	704,805	736,673	101	105	637,668
Frozen Juice						
Orange Juice Conc. ³	2,102,615	2,054,272	2,280,265	108	111	
(Gallon Equivalent)	212,471	207,586	230,423			
Other Juice Concentrate	267,095	328,520	317,900	119	97	
Total	2,369,710	2,382,792	2,598,165	110	109	258,126

See footnote(s) at end of table.

--continued

**Stocks in Cold Storage: By Commodity,
United States, May 2004**

Commodity	Stocks in All Warehouses			Percent of		Public Warehouse Stocks
	May 31, 2003	Apr 30, 2004	May 31, 2004	May 2003	Apr 2004	May 31, 2004
	<i>1,000 Pounds</i>	<i>1,000 Pounds</i>	<i>1,000 Pounds</i>	<i>Percent</i>	<i>Percent</i>	<i>1,000 Lbs</i>
Frozen Vegetables						
Asparagus	7,035	7,385	10,825	154	147	
Limas, Fordhook	5,224	2,755	2,482	48	90	
Limas, Baby	25,187	29,669	27,109	108	91	
Green Beans, Reg. Cut	78,553	61,740	58,799	75	95	
Green Beans, Fr. Style	8,895	12,383	9,294	104	75	
Broccoli, Spears	51,861	45,533	50,138	97	110	
Broccoli, Chopped & Cut	83,039	55,759	59,863	72	107	
Brussels Sprouts	11,921	14,160	13,038	109	92	
Carrots, Diced	44,468	65,481	57,586	129	88	
Carrots, Other	98,044	98,657	90,010	92	91	
Cauliflower	19,717	15,871	14,255	72	90	
Corn, Cut	200,318	314,684	269,987	135	86	
Corn, Cob	139,434	163,456	133,863	96	82	
Mixed Vegetables	40,178	46,368	51,737	129	112	
Okra	28,214	18,306	20,104	71	110	
Onion Rings	5,896	6,730	9,526	162	142	
Onions, Other	29,721	32,634	31,976	108	98	
Blackeye Peas	5,492	3,521	2,920	53	83	
Green Peas	49,109	78,373	64,999	132	83	
Peas & Carrots Mixed	6,536	5,655	5,264	81	93	
Spinach	111,200	81,836	92,015	83	112	
Squash, Summer/Zucchini	28,786	26,928	29,223	102	109	
Southern Greens	22,131	19,289	16,397	74	85	
Other Vegetables	254,174	260,748	259,867	102	100	
Total	1,355,133	1,467,921	1,381,277	102	94	998,344
Potatoes						
French Fries	866,543	874,233	894,406	103	102	
Other Frozen	240,083	284,469	291,617	121	103	
Total	1,106,626	1,158,702	1,186,023	107	102	890,499

See footnote(s) at end of table.

--continued

**Stocks in Cold Storage: By Commodity,
United States, May 2004 (Continued)**

Commodity	Stocks in All Warehouses			Percent of		Public Warehouse Stocks
	May 31, 2003	Apr 30, 2004	May 31, 2004	May 2003	Apr 2004	May 31, 2004
	<i>1,000 Pounds</i>	<i>1,000 Pounds</i>	<i>1,000 Pounds</i>	<i>Percent</i>	<i>Percent</i>	<i>1,000 Lbs</i>
Meat						
Frozen Beef						
Boneless ⁴	336,910	367,945	346,848	103	94	
Beef Cuts ⁵	48,212	53,235	51,687	107	97	
Total	385,122	421,180	398,535	103	95	396,327
(Government Owned)	1,760	4,818	4,453	253	92	
Frozen Pork						
Picnics, Bone-in	9,258	12,333	13,497	146	109	
Hams, Total	104,595	56,329	65,509	63	116	62,389
Bone-in	52,986	25,625	32,949	62	129	31,662
Boneless ⁶	51,609	30,704	32,560	63	106	30,727
Bellies	45,870	48,363	41,444	90	86	
Loins, Total	31,515	36,064	30,065	95	83	27,255
Bone-in	16,095	20,186	18,296	114	91	
Boneless ⁷	15,420	15,878	11,769	76	74	
Ribs ⁸	71,661	68,126	55,018	77	81	
Butts	12,939	9,121	7,135	55	78	
Trimming ⁹	48,211	45,719	39,827	83	87	
Other ¹⁰	74,583	79,602	72,968	98	92	
Variety Meats ¹¹	51,276	43,834	46,796	91	107	
Unclassified ¹²	49,811	55,650	47,713	96	86	
Total	499,719	455,141	419,972	84	92	368,852
(Government Owned)	910	876	747	82	85	
Other						
Veal	5,104	5,843	5,149	101	88	
Lamb & Mutton	5,838	3,251	3,319	57	102	
Total	10,942	9,094	8,468	77	93	8,422
Canned						
Canned Hams	4,939	4,387	4,440	90	101	
Other Canned Meat	786	389	351	45	90	
Total	5,725	4,776	4,791	84	100	4,547
Total	901,508	890,191	831,766	92	93	778,148
Miscellaneous						
Cooler	626,155	615,212	620,077	99	101	294,910
Freezer	2,180,026	1,823,832	1,910,304	88	105	1,842,820
Total	2,806,181	2,439,044	2,530,381	90	104	2,137,730
Commodities						
Stored in Coolers	3,280,896	3,664,853	3,135,173	96	86	1,215,852
Stored in Freezers	10,294,546	9,782,032	10,062,434	98	103	6,655,576
Total	13,575,442	13,446,885	13,197,607	97	98	7,871,428

¹ Boneless.

² All Products.

³ Adjusted to 42.0 degrees Brix equivalent (9.896 pounds per gallon).

⁴ Includes all boxed boneless beef, such as ground beef, roasts, steaks, loins, strips, rounds, trimmings, etc. Variety meats (edible offal), such as tongues, livers, hearts, kidneys, and other organs removed from slaughtered beef, are included as miscellaneous freezer stocks.

⁵ Includes all boxed primal beef cuts, bone-in.

⁶ Includes full ham, bone removed and individual muscles separated.

⁷ Includes pork tenderloins.

⁸ Includes spareribs and backribs.

⁹ Includes 42% regular trimmings, 72% special trimmings, boneless picnic meat, jowls, neckbone trimmings, blade, cheek, head, and shank meat, etc. Packaged bacon, sausage, and processed items, such as hot dogs and luncheon meats, are included in miscellaneous cooler or freezer stocks.

¹⁰ Includes ears, tails, feet, neckbones and snouts.

¹¹ Includes tongues, kidneys, livers, stomachs, hearts, chitterlings, salivary glands, and other organs removed from slaughtered hogs.

¹² Includes product unable to be classified elsewhere in this report.

**Stocks in Cold Storage: By Commodity, Region,
and United States, April 30, 2004**

Commodity	New England	Middle Atlantic	East North Central	West North Central	South Atlantic
	<i>1,000 Pounds</i>	<i>1,000 Pounds</i>	<i>1,000 Pounds</i>	<i>1,000 Pounds</i>	<i>1,000 Pounds</i>
Total Fresh Apples	5,444	212,204	88,398		85,327
Nuts					
Shelled					
Peanuts		692	177	24	256,384
Pecans ¹		129			10,305
In-Shell					
Pecans ¹					26,392
Dairy Products					
Natural Cheese					
American, Total	24,490	54,318	209,515	113,133	7,027
Other Natural Cheese	381	16,642	125,768	52,692	207
Frozen Poultry					
Chicken					
Broilers, Fryers					
Roasters (Whole)		1,752	315	964	4,652
Hens, Mature Chickens	25	229	83	219	438
Other	902	15,093	12,592	30,853	199,983
Total Chicken	927	17,074	12,990	32,036	205,073
Turkeys					
Whole Turkeys	567	8,018	1,220	62,554	62,885
Other Turkey	274	8,458	19,638	68,583	123,494
Total Turkey	841	16,476	20,858	131,137	186,379
Ducks	1	371	419	1	114
Total Poultry	1,769	33,921	34,267	163,174	391,566
Frozen Fruit					
Apples	26	17,732	28,094	93	604
Blueberries	9,824	4,860	16,487	1,222	631
Cherries, Tart (RTP)	1	2,067	25,202	46	725
Cherries, Sweet	1	140	2,202	814	22
Peaches	18	1,980	4,430	2,375	308
Raspberries, Red	29	703	841	375	146
Strawberries, Total	44	6,391	8,621	2,050	3,259
Other Frozen Fruit	79	11,887	159,592	2,534	2,983

See footnote(s) at end of table.

--continued

**Stocks in Cold Storage: By Commodity, Region,
and United States, April 30, 2004 (continued)**

Commodity	East South Central	West South Central	Mountain	Pacific	US Total
	<i>1,000 Pounds</i>	<i>1,000 Pounds</i>	<i>1,000 Pounds</i>	<i>1,000 Pounds</i>	<i>1,000 Pounds</i>
Total Fresh Apples		3,990	4,644	1,047,854	1,447,861
Nuts					
Shelled					
Peanuts	28,992	89,097	80	212	375,658
Pecans ¹	1,377	20,572		97	32,480
In-Shell					
Pecans ¹	3,226	115,619			145,237
Dairy Products					
Natural Cheese					
American, Total	195	2,173	25,848	91,811	528,510
Other Natural Cheese	2,458	132	3,774	12,217	214,271
Frozen Poultry					
Chicken					
Broilers, Fryers					
Roasters (Whole)	3,790	9,393	224	2,205	23,295
Hens, Mature Chickens	281	2,221	3	888	4,387
Other	143,682	185,578	3,373	26,083	618,139
Total Chicken	147,753	197,192	3,600	29,176	645,821
Turkeys					
Whole Turkeys	2,476	99,727	7,412	22,812	267,671
Other Turkey	1,358	28,156	12,035	19,106	281,102
Total Turkey	3,834	127,883	19,447	41,918	548,773
Ducks	19	43	29	23	1,020
Total Poultry	151,606	325,118	23,076	71,117	1,195,614
Frozen Fruit					
Apples	55	1,287	58	8,972	56,921
Blueberries	189	700	141	9,136	43,190
Cherries, Tart (RTP)		85	746	3,409	32,281
Cherries, Sweet	1	30	469	1,306	4,985
Peaches	14	824	49	24,343	34,341
Raspberries, Red	151	178	286	19,799	22,508
Strawberries, Total	1,001	14,962	28	191,061	227,417
Other Frozen Fruit	167	8,529	3,626	70,805	260,202

See footnote(s) at end of table.

--continued

**Stocks in Cold Storage: By Commodity, Region,
and United States, April 30, 2004 (continued)**

Commodity	New England	Middle Atlantic	East North Central	West North Central	South Atlantic
	<i>1,000 Pounds</i>	<i>1,000 Pounds</i>	<i>1,000 Pounds</i>	<i>1,000 Pounds</i>	<i>1,000 Pounds</i>
Frozen Juice					
Orange Juice Conc. ²	112		1,069	189	1,976,879
Other Juice Concentrate	43,019	23,028	15,237	1,171	109,117
Frozen Vegetables ³					
Asparagus		691	3,198	62	397
Limas, Fordhook		834	548		250
Limas, Baby		4,164	1,796		3,956
Green Beans, Reg. Cut		9,307	13,972	802	5,897
Green Beans, Fr. Style		3,129	2,649	153	1,022
Broccoli, Spears		5,800	6,130		3,534
Broccoli, Chopped & Cut		5,010	5,582	5,837	7,701
Brussels Sprouts		1,918	1,382		1,903
Carrots, Diced		8,106	18,804	208	4,521
Carrots, Other		9,840	13,199	515	5,817
Cauliflower		2,461	2,319	84	1,218
Corn, Cut		25,316	51,295	25,013	14,912
Corn, Cob		12,975	23,230	11,990	8,319
Mixed Vegetables		4,414	7,400	25	2,300
Okra		837	311		2,966
Onion Rings		255	3,155	689	1,119
Onions, Other		4,744	5,393	314	1,689
Blackeye Peas		418	61		1,366
Green Peas		10,283	9,558	4,111	3,483
Peas & Carrots Mixed		1,001	1,075	1	630
Spinach		9,327	3,240	95	4,188
Squash, Summer/Zucchini		2,683	6,685		3,467
Southern Greens		1,979	387		4,013
Other Vegetables		31,864	33,163	8,122	18,160
Potatoes					
French Fries	31,365	24,372	59,941	93,819	25,054
Other Frozen	5,058	13,115	42,306	5,361	3,581
Meat					
Frozen Beef					
Boneless ⁴	1,097	56,174	41,870	111,854	28,719
Beef Cuts ⁵	195	2,430	9,292	7,790	2,975
Frozen Pork					
Ribs ⁶	257	1,833	14,528	31,726	9,284
Trimmings ⁷		403	14,713	24,471	1,291
Other ⁸	1,891	908	12,889	36,201	13,465
Other					
Veal		1,435	1,473	171	42
Lamb & Mutton		413	637	120	559

See footnote(s) at end of table.

--continued

**Stocks in Cold Storage: By Commodity, Region,
and United States, April 30, 2004 (continued)**

Commodity	East South Central	West South Central	Mountain	Pacific	US Total
	<i>1,000 Pounds</i>	<i>1,000 Pounds</i>	<i>1,000 Pounds</i>	<i>1,000 Pounds</i>	<i>1,000 Pounds</i>
Frozen Juice					
Orange Juice Concentrate	39	2,225	107	73,652	2,054,272
Other Juice Concentrate	179	16,448	948	119,373	328,520
Frozen Vegetables ³					
Asparagus		295	6	2,736	7,385
Limas, Fordhook		116	2	1,005	2,755
Limas, Baby		1,386	4,171	14,196	29,669
Green Beans, Reg. Cut		1,255	392	30,115	61,740
Green Beans, Fr. Style		223	15	5,192	12,383
Broccoli, Spears		17,790	874	11,405	45,533
Broccoli, Chopped & Cut		12,303	399	18,927	55,759
Brussels Sprouts		259	4	8,694	14,160
Carrots, Diced		1,481	19	32,342	65,481
Carrots, Other		10,285	184	58,817	98,657
Cauliflower		2,327	90	7,372	15,871
Corn, Cut		2,098	1,037	195,013	314,684
Corn, Cob		1,105	33	105,804	163,456
Mixed Vegetables		5,906	7	26,316	46,368
Okra		13,709		483	18,306
Onion Rings		628	584	300	6,730
Onions, Other		1,944	2,633	15,917	32,634
Blackeye Peas		1,232		444	3,521
Green Peas		2,174	7,122	41,642	78,373
Peas & Carrots Mixed		486	34	2,428	5,655
Spinach		10,619	158	54,209	81,836
Squash, Summer/Zucchini		3,592	946	9,555	26,928
Southern Greens		11,990		920	19,289
Other Vegetables		30,181	6,773	132,485	260,748
Potatoes					
French Fries	6,625	11,933	182,792	438,332	874,233
Other Frozen	1,343	26,307	47,684	139,714	284,469
Meat					
Frozen Beef					
Boneless ⁴	3,264	71,234	6,743	46,990	367,945
Beef Cuts ⁵	4,480	7,983	9,186	8,904	53,235
Frozen Pork					
Ribs ⁶	4,100	3,629	205	2,564	68,126
Trimming ⁷	319	3,995	9	518	45,719
Other ⁸	9,935	2,829	293	1,191	79,602
Other					
Veal		283		2,439	5,843
Lamb & Mutton		186	26	1,310	3,251

¹ East North Central combined with South Atlantic. Mountain and West North Central combined with West South Central.

² Middle Atlantic combined with South Atlantic.

³ New England combined with Middle Atlantic. East South Central combined with South Atlantic.

⁴ Includes all boxed boneless beef, such as ground beef, roasts, steaks, loins, strips, rounds, trimmings, etc. Variety meats (edible offal), such as tongues, livers, hearts, kidneys, and other organs removed from slaughtered beef, are included as miscellaneous freezer stocks.

⁵ Includes all boxed primal beef cuts, bone-in.

⁶ Includes spareribs and backribs.

⁷ Includes 42% regular trimmings, 72% special trimmings, boneless picnic meat, jowls, neckbone trimmings, blade, cheek, head, and shank meat, etc. Packaged bacon, sausage, and processed items, such as hot dogs and luncheon meats, are included in miscellaneous cooler or freezer stocks.

⁸ Includes ears, tails, feet, neckbones and snouts.

⁹ Includes tongues, kidneys, livers, stomachs, hearts, chitterlings, salivary glands, and other organs removed from slaughtered hogs.

¹⁰ Includes product unable to be classified elsewhere in this report.

**Stocks in Cold Storage: By Commodity, Region,
and United States, May 31, 2004**

Commodity	New England	Middle Atlantic	East North Central	West North Central	South Atlantic
	<i>1,000 Pounds</i>	<i>1,000 Pounds</i>	<i>1,000 Pounds</i>	<i>1,000 Pounds</i>	<i>1,000 Pounds</i>
Total Fresh Apples	3,626	125,696	49,777		50,102
Nuts					
Shelled					
Peanuts		692	178	24	250,685
Pecans ¹		123			10,819
In-Shell					
Pecans ¹					22,411
Dairy Products					
Natural Cheese					
American, Total	24,752	55,711	220,664	125,326	7,583
Other Natural Cheese	447	17,329	124,401	54,821	198
Frozen Poultry					
Chicken					
Broilers, Fryers					
Roasters (Whole)		1,729	203	737	4,105
Hens, Mature Chickens	34	284	59	296	573
Other	1,042	16,772	12,888	30,601	223,438
Total Chicken	1,076	18,785	13,150	31,634	228,116
Turkeys					
Whole Turkeys	873	12,959	2,274	63,055	69,945
Other Turkey	310	10,104	21,981	65,233	123,838
Total Turkey	1,183	23,063	24,255	128,288	193,783
Ducks		318	442	1	80
Total Poultry	2,259	42,166	37,847	159,923	421,979
Frozen Fruit					
Apples	28	15,599	26,605	87	608
Blueberries	8,954	3,995	13,190	1,047	797
Cherries, Tart (RTP)		1,598	19,015	41	559
Cherries, Sweet	1	141	1,830	864	3
Peaches	14	1,696	3,815	1,888	379
Raspberries, Red	24	679	747	287	205
Strawberries, Total	50	6,846	6,981	2,251	3,906
Other Frozen Fruit	61	10,386	139,381	2,524	2,175

See footnote(s) at end of table.

--continued

**Stocks in Cold Storage: By Commodity, Region,
and United States, May 31, 2004 (continued)**

Commodity	East South Central	West South Central	Mountain	Pacific	US Total
	<i>1,000 Pounds</i>	<i>1,000 Pounds</i>	<i>1,000 Pounds</i>	<i>1,000 Pounds</i>	<i>1,000 Pounds</i>
Total Fresh Apples		2,940	1,722	690,017	923,880
Nuts					
Shelled					
Peanuts	30,445	103,302	80	218	385,624
Pecans ¹	1,426	23,874		107	36,349
In-Shell					
Pecans ¹	2,101	95,979			120,491
Dairy Products					
Natural Cheese					
American, Total	120	4,647	28,452	91,577	558,832
Other Natural Cheese	2,504	116	4,492	12,659	216,967
Frozen Poultry					
Chicken					
Broilers, Fryers					
Roasters (Whole)	5,732	8,975	240	2,087	23,808
Hens, Mature Chickens	369	850		1,135	3,600
Other	138,274	191,035	3,063	25,958	643,071
Total Chicken	144,375	200,860	3,303	29,180	670,479
Turkeys					
Whole Turkeys	2,661	97,027	9,825	25,261	283,880
Other Turkey	2,154	29,534	11,538	19,064	283,756
Total Turkey	4,815	126,561	21,363	44,325	567,636
Ducks	18	83	29	49	1,020
Total Poultry	149,208	327,504	24,695	73,554	1,239,135
Frozen Fruit					
Apples	39	1,068	55	9,780	53,869
Blueberries	140	654	125	8,598	37,500
Cherries, Tart (RTP)		95	550	2,104	23,962
Cherries, Sweet	1	30	650	1,685	5,205
Peaches	17	589	49	17,791	26,238
Raspberries, Red	147	175	236	16,102	18,602
Strawberries, Total	1,163	31,868	59	260,003	313,127
Other Frozen Fruit	145	13,305	4,853	65,890	238,720

See footnote(s) at end of table.

--continued

**Stocks in Cold Storage: By Commodity, Region,
and United States, May 31, 2004 (continued)**

Commodity	New England	Middle Atlantic	East North Central	West North Central	South Atlantic
	<i>1,000 Pounds</i>	<i>1,000 Pounds</i>	<i>1,000 Pounds</i>	<i>1,000 Pounds</i>	<i>1,000 Pounds</i>
Frozen Juice					
Orange Juice Conc. ²	124		840	159	2,194,992
Other Juice Concentrate	32,239	24,964	15,241	995	109,268
Frozen Vegetables ³					
Asparagus		709	5,958	59	360
Limas, Fordhook		753	478		263
Limas, Baby		4,327	1,528		3,887
Green Beans, Reg. Cut		7,245	10,583	797	6,235
Green Beans, Fr. Style		2,377	1,934	139	668
Broccoli, Spears		5,584	6,715		3,872
Broccoli, Chopped & Cut		5,396	5,907	5,371	6,456
Brussels Sprouts		1,439	1,268	1	2,684
Carrots, Diced		7,361	16,266	287	4,193
Carrots, Other		8,622	10,986	533	5,826
Cauliflower		2,638	1,840	117	1,034
Corn, Cut		21,949	42,270	19,950	13,111
Corn, Cob		10,845	17,168	8,155	8,602
Mixed Vegetables		3,967	7,035	26	2,424
Okra		1,033	316		3,739
Onion Rings		278	4,049	1,566	1,573
Onions, Other		4,807	4,987	359	2,121
Blackeye Peas		366	54		960
Green Peas		8,976	7,548	2,394	2,881
Peas & Carrots Mixed		872	846	1	507
Spinach		10,583	3,522	66	7,361
Squash, Summer/Zucchini		1,792	6,328		3,627
Southern Greens		1,587	366	1	3,085
Other Vegetables		31,475	35,823	7,173	19,344
Potatoes					
French Fries	33,262	21,538	61,253	97,480	25,121
Other Frozen	5,381	13,658	39,456	5,329	4,449
Meat					
Frozen Beef					
Boneless ⁴	1,071	53,052	36,107	107,364	26,260
Beef Cuts ⁵	175	2,091	8,149	7,204	3,938
Frozen Pork					
Ribs ⁶	209	1,346	12,038	25,747	7,537
Trimmings ⁷		343	13,486	20,143	1,099
Other ⁸	1,737	895	11,686	32,256	13,046
Other					
Veal		1,408	1,180	152	27
Lamb & Mutton		375	632	105	407

See footnote(s) at end of table.

--continued

**Stocks in Cold Storage: By Commodity, Region,
and United States, May 31, 2004 (continued)**

Commodity	East South Central	West South Central	Mountain	Pacific	US Total
	<i>1,000 Pounds</i>	<i>1,000 Pounds</i>	<i>1,000 Pounds</i>	<i>1,000 Pounds</i>	<i>1,000 Pounds</i>
Frozen Juice					
Orange Juice Concentrate	43	2,448	114	81,545	2,280,265
Other Juice Concentrate	182	15,068	971	118,972	317,900
Frozen Vegetables ³					
Asparagus		289	6	3,444	10,825
Limas, Fordhook		110	2	876	2,482
Limas, Baby		963	3,962	12,442	27,109
Green Beans, Reg. Cut		1,302	208	32,429	58,799
Green Beans, Fr. Style		236	25	3,915	9,294
Broccoli, Spears		18,933	964	14,070	50,138
Broccoli, Chopped & Cut		17,561	277	18,895	59,863
Brussels Sprouts		281	3	7,362	13,038
Carrots, Diced		1,293	16	28,170	57,586
Carrots, Other		11,168	146	52,729	90,010
Cauliflower		2,103	10	6,513	14,255
Corn, Cut		2,264	137	170,306	269,987
Corn, Cob		1,340	29	87,724	133,863
Mixed Vegetables		10,015	25	28,245	51,737
Okra		14,466		550	20,104
Onion Rings		891	764	405	9,526
Onions, Other		2,438	2,516	14,748	31,976
Blackeye Peas		889		651	2,920
Green Peas		1,896	6,746	34,558	64,999
Peas & Carrots Mixed		578	45	2,415	5,264
Spinach		11,225	38	59,220	92,015
Squash, Summer/Zucchini		5,641	875	10,960	29,223
Southern Greens		9,458		1,900	16,397
Other Vegetables		31,174	7,981	126,897	259,867
Potatoes					
French Fries	7,330	11,268	177,225	459,929	894,406
Other Frozen	1,342	26,036	49,982	145,984	291,617
Meat					
Frozen Beef					
Boneless ⁴	3,584	68,061	6,414	44,935	346,848
Beef Cuts ⁵	4,382	8,136	7,756	9,856	51,687
Frozen Pork					
Ribs ⁶	2,818	2,689	161	2,473	55,018
Trimming ⁷	216	4,067	7	466	39,827
Other ⁸	9,024	2,820	395	1,109	72,968
Other					
Veal		212		2,170	5,149
Lamb & Mutton		433	59	1,308	3,319

¹ East North Central combined with South Atlantic. Mountain and West North Central Combined with West South Central.

² Middle Atlantic combined with South Atlantic.

³ New England combined with Middle Atlantic. East South Central combined with South Atlantic.

⁴ Includes all boxed boneless beef, such as ground beef, roasts, steaks, loins, strips, rounds, trimmings, etc. Variety meats (edible offal), such as tongues, livers, hearts, kidneys, and other organs removed from slaughtered beef, are included as miscellaneous freezer stocks.

⁵ Includes all boxed primal beef cuts, bone-in.

⁶ Includes spareribs and backribs.

⁷ Includes 42% regular trimmings, 72% special trimmings, boneless picnic meat, jowls, neckbone trimmings, blade, cheek, head, and shank meat, etc. Packaged bacon, sausage, and processed items, such as hot dogs and luncheon meats, are included in miscellaneous cooler or freezer stocks.

⁸ Includes ears, tails, feet, neckbones and snouts.

⁹ Includes tongues, kidneys, livers, stomachs, hearts, chitterlings, salivary glands, and other organs removed from slaughtered hogs.

¹⁰ Includes product unable to be classified elsewhere in this report.

**Public General Warehouses: Cold Storage Space Occupied
by Region and United States, May 2004**

Region	Cooler				Freezer			
	Usable Space	Usable Space Occupied			Usable Space	Usable Space Occupied		
		May 31 2004	May 31 2003	Apr 30 2004		May 31 2004	May 31 2003	Apr 30 2004
	<i>1,000 Cu Ft</i>	<i>Percent</i>	<i>Percent</i>	<i>Percent</i>	<i>1,000 Cu Ft</i>	<i>Percent</i>	<i>Percent</i>	<i>Percent</i>
New England	1,741	65	75	78	15,747	60	70	72
Middle Atlantic	46,611	52	54	57	136,128	52	52	55
E. North Central	53,728	50	50	53	212,828	45	49	52
W. North Central	46,174	42	37	45	160,060	55	55	57
South Atlantic	51,553	30	31	35	198,963	49	52	56
E. South Central	9,789	44	45	47	71,316	38	42	45
W. South Central	29,208	27	30	30	139,621	48	45	50
Mountain	12,169	45	43	46	60,184	52	62	62
Pacific	54,485	39	38	40	318,037	52	59	63
US	305,458	41	41	45	1,312,884	50	53	56

Cold Storage Regions



Survey Procedures: Questionnaires are mailed about the 24th of each month to all operators on the list of approximately 1,400 public and private cold storage warehouses. In addition, apple data are obtained from special surveys and other sources (State Departments of Agriculture, U.S. Apple Association, etc.). All survey data represent stocks as of the end of the month.

Data are collected from warehouses artificially cooled to a temperature of 50 degrees Fahrenheit or lower, and whose food products are normally stored for 30 days or more. All food items in these facilities are reported regardless of the number of days stored at the time of the report. Also included are specialized storage facilities meeting the 30 day requirement, such as fruit houses, dairy manufacturing plants, frozen fruit, fruit juice, and vegetable processors, and poultry and meat packing plants. Excluded are stocks in space maintained by wholesalers, jobbers, distributors, chain stores, locker plants containing individual lockers, meat packer branch houses, and frozen food processors whose entire inventories are turned over more than once a month.

Estimating Procedures: Data for reporting firms are added to estimates for non-reporting firms to obtain regional and National totals. Estimates for non-reporting firms are obtained by multiplying the previous month's figure by a percent change from the previous month. The percent change is calculated for each item from totals of the current and previous month summed from firms that reported both months.

Revision Policy: Data are revised the following month based on late reports or corrected data. Final figures are published in the annual summary in February of the following year.

Reliability: Reports are received from 900 firms each month which represent about 70 percent of the total capacity. Firms that are not on the list or firms who have never reported are not represented in the data. Monthly data can vary due to different firms reporting month to month. Survey data are also subject to non-sampling errors such as omissions and mistakes in reporting and in processing the data. While these errors cannot be measured directly, they are minimized by carefully reviewing all reported data for consistency and reasonableness.

ACCESS TO REPORTS!!

For your convenience, there are several ways to obtain NASS reports, data products, and services:

INTERNET ACCESS

All NASS reports are available free of charge on the worldwide Internet. For access, connect to the Internet and go to the NASS Home Page at: www.usda.gov/nass/. Select "Today's Reports" or Publications and then Reports Calendar or Publications and then Search, by Title or Subject.

E-MAIL SUBSCRIPTION

All NASS reports are available by subscription free of charge direct to your e-mail address. Starting with the NASS Home Page at www.usda.gov/nass/, click on **Publications**, then click on the **Subscribe by E-mail** button which takes you to the page describing e-mail delivery of reports. Finally, click on **Go to the Subscription Page** and follow the instructions.

PRINTED REPORTS OR DATA PRODUCTS

CALL OUR TOLL-FREE ORDER DESK: 800-999-6779 (U.S. and Canada)
Other areas, please call 703-605-6220 FAX: 703-605-6900
(Visa, MasterCard, check, or money order acceptable for payment.)

ASSISTANCE

For **assistance** with general agricultural statistics or further information about NASS or its products or services, contact the **Agricultural Statistics Hotline** at **800-727-9540**, 7:30 a.m. to 4:00 p.m. ET, or e-mail: nass@nass.usda.gov.

The United States Department of Agriculture (USDA) prohibits discrimination in all its programs on the basis of race, color, national origin, gender, religion, age, disability, political beliefs, sexual orientation, and marital or family status. (Not all prohibited bases apply to all programs.) Persons with disabilities who require alternative means for communication of program information (braille, large print, audiotape, etc.) should contact the USDA's TARGET Center at 202-720-2600 (voice and TDD).

To file a complaint of discrimination, write USDA, Director, Office of Civil Rights, Room 326-W, Whitten Building, 1400 Independence Avenue, SW, Washington, D.C., 20250-9410, or call 202-720-5964 (voice or TDD). USDA is an equal opportunity provider and employer.