



# Cold Storage

---

Released July 21, 2004, by the National Agricultural Statistics Service (NASS), Agricultural Statistics Board, U.S. Department of Agriculture. For information on *Cold Storage* call Perry Game at (202) 720-8784, office hours 7:00 a.m. to 4:00 p.m. ET.

## Highlights

**Frozen food stocks** in refrigerated warehouses on June 30, 2004 were greater than year earlier levels for chicken, beef, orange juice, cheese, eggs, and vegetables.

Butter stocks were up 5 percent from last month, but down 38 percent from a year ago.

**Total red meat supplies** in freezers were down 4 percent from last month and down 5 percent from last year. Frozen pork supplies were down 9 percent from last month and down 18 percent from the previous year. Stocks of pork bellies were down 10 percent from last month and down 15 percent from last year.

**Total frozen poultry supplies** on June 30, 2004 were 8 percent higher than the previous month, but 2 percent lower than a year ago. Total stocks of chicken were up 12 percent from the previous month and 15 percent higher than last year. Total pounds of turkey in freezers were up 4 percent from last month, but down 18 percent from June 30, 2003.

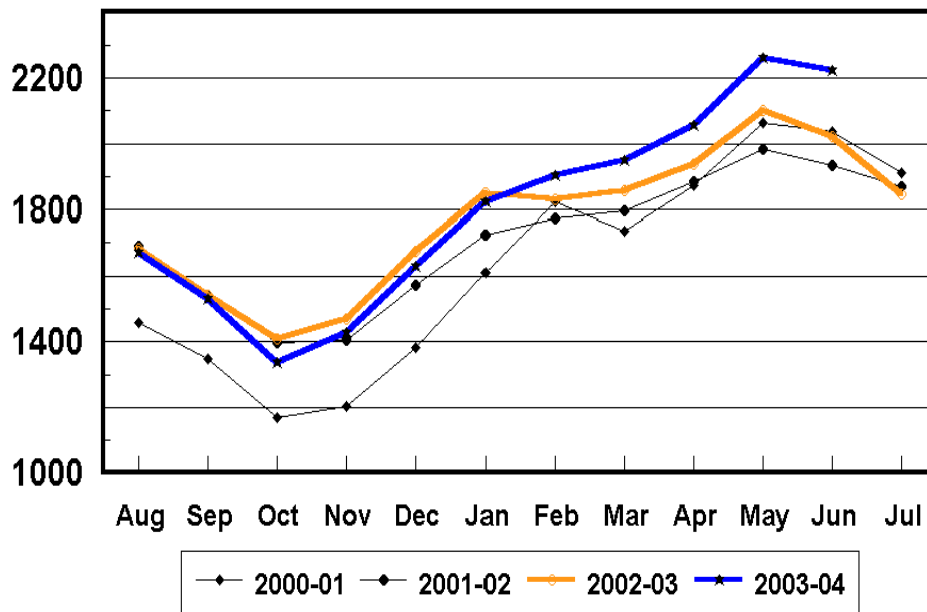
This page is intentionally blank.

## Contents

	<b>Page</b>
Stocks in Cold Storage: By Commodity, United States, June 2004 .....	4
Stocks in Cold Storage: By Commodity, Region, and United States, May 31, 2004 .....	8
Stocks in Cold Storage: By Commodity, Region, and United States, June 30, 2004 .....	12
Public General Warehouses: Cold Storage Space Occupied by Region and United States, June 2004 .....	16
Survey and Estimating Procedures, Revision Policy and Reliability .....	17
Access to Reports .....	18

### Orange Juice Concentrate-United States Cold Storage Stocks, 2000 - 2004

Million Pounds



**Stocks in Cold Storage: By Commodity,  
United States, June 2004**

Commodity	Stocks in All Warehouses			Percent of		Public Warehouse Stocks
	Jun 30, 2003	May 31, 2004	Jun 30, 2004	Jun 2003	May 2004	Jun 30, 2004
	<i>1,000 Pounds</i>	<i>1,000 Pounds</i>	<i>1,000 Pounds</i>	<i>Percent</i>	<i>Percent</i>	<i>1,000 Lbs</i>
Apples						
Regular Storage	18,737	21,812	8,030	43	37	
Controlled Atmosphere	711,816	902,068	549,974	77	61	
Total	730,553	923,880	558,004	76	60	403
Pears						
Bartlett	233	6	1,284	551	21,400	
Other Varieties	13,249	44,273	15,459	117	35	
Total	13,482	44,279	16,743	124	38	2,037
Nuts						
Shelled						
Peanuts	400,397	395,852	399,968	100	101	
Pecans	43,258	36,349	37,173	86	102	
Other Shelled	153,827	145,048	122,968	80	85	
Total	597,482	577,249	560,109	94	97	252,246
In-Shell						
Peanuts	23,047	27,286	36,971	160	135	
Pecans	47,296	121,339	99,110	210	82	
Other In-Shell	18,376	6,858	6,815	37	99	
Total	88,719	155,483	142,896	161	92	55,241
Dairy Products						
Butter, Total	301,425	178,744	187,800	62	105	167,804
(Government Owned)	10,779	255	155	1	61	
Natural Cheese						
American, Total	549,984	561,087	590,709	107	105	
(Government Owned)	3,757	9,858	8,658	230	88	
Swiss	26,042	26,208	23,314	90	89	
Other Natural Cheese	224,072	219,508	225,409	101	103	
Total	800,098	806,803	839,432	105	104	469,550
Eggs, Frozen						
Whites	2,659	2,717	2,764	104	102	
Yolks	897	1,143	1,099	123	96	
Whole & Mixed	10,725	12,517	10,967	102	88	
Unclassified	3,670	4,177	3,601	98	86	
Total	17,951	20,554	18,431	103	90	17,997
Frozen Poultry						
Chicken						
Broilers, Fryers						
Roasters (Whole)	29,920	23,601	22,820	76	97	
Hens, Mature Chickens	3,511	3,540	3,813	109	108	
Breasts & Breast Meat	105,171	88,457	95,280	91	108	
Drumsticks	15,368	8,927	10,442	68	117	
Leg Quarters	83,302	115,094	147,991	178	129	
Legs	11,567	9,057	11,422	99	126	
Thigh & Thigh Quarters	6,406	6,781	6,617	103	98	
Thigh Meat <sup>1</sup>	14,892	15,967	15,574	105	98	
Wings <sup>2</sup>	31,314	29,711	31,985	102	108	
Paws and Feet	10,139	23,493	18,430	182	78	
Other	341,669	345,218	388,723	114	113	
Total Chicken	653,259	669,846	753,097	115	112	

See footnote(s) at end of table.

--continued

**Stocks in Cold Storage: By Commodity,  
United States, June 2004**

Commodity	Stocks in All Warehouses			Percent of		Public Warehouse Stocks
	Jun 30, 2003	May 31, 2004	Jun 30, 2004	Jun 2003	May 2004	Jun 30, 2004
	<i>1,000 Pounds</i>	<i>1,000 Pounds</i>	<i>1,000 Pounds</i>	<i>Percent</i>	<i>Percent</i>	<i>1,000 Lbs</i>
Turkeys						
Toms (Whole Carcasses)	213,287	169,094	180,595	85	107	
Hens (Whole Carcasses)	130,550	118,444	126,370	97	107	
Whole Turkeys	343,837	287,538	306,965	89	107	
Other Turkey	374,375	283,586	284,615	76	100	
Total Turkey	718,212	571,124	591,580	82	104	462,852
Ducks	6,115	1,043	941	15	90	
Total Poultry	1,377,586	1,242,013	1,345,618	98	108	1,171,634
Frozen Fruit						
Apples	50,940	53,897	45,987	90	85	
Apricots	6,225	2,762	14,891	239	539	
Blackberries, Total	8,647	10,360	15,712	182	152	
IQF	5,149	7,858	12,802	249	163	
Pails and Tubs	1,140	983	1,595	140	162	
Barrels, 400 lbs net	1,897	944	907	48	96	
Concentrate	461	575	408	89	71	
Blueberries	29,733	37,504	34,883	117	93	
Boysenberries	1,139	800	2,382	209	298	
Cherries, Tart (RTP)	11,002	23,971	17,273	157	72	
Cherries, Tart (Juice)	861	977	993	115	102	
Cherries, Sweet	4,703	5,290	5,031	107	95	
Grapes	4,524	4,042	3,175	70	79	
Peaches	17,515	26,214	22,955	131	88	
Raspberries, Black	1,092	486	1,764	162	363	
Raspberries, Red, Total	19,486	18,354	26,508	136	144	
IQF	10,981	11,110	14,933	136	134	
Pails and Tubs	3,506	3,595	5,039	144	140	
Barrels, 400 lbs net	4,527	2,990	5,468	121	183	
Concentrate	472	659	1,068	226	162	
Strawberries, Total	437,322	319,418	419,884	96	131	
IQF and Poly	221,167	150,858	209,130	95	139	
Pails and Tubs	158,409	84,367	127,865	81	152	
Barrels and Drums	33,775	70,225	57,533	170	82	
Juice Stock	23,971	13,968	25,356	106	182	
Other Frozen Fruit	160,770	235,406	205,323	128	87	
Total	753,959	739,481	816,761	108	110	710,368
Frozen Juice						
Orange Juice Conc. <sup>3</sup>	2,021,198	2,262,004	2,221,545	110	98	
(Gallon Equivalent)	204,244	228,578	224,489			
Other Juice Concentrate	333,301	329,748	292,530	88	89	
Total	2,354,499	2,591,752	2,514,075	107	97	256,591

See footnote(s) at end of table.

--continued

**Stocks in Cold Storage: By Commodity,  
United States, June 2004**

Commodity	Stocks in All Warehouses			Percent of		Public Warehouse Stocks
	Jun 30, 2003	May 31, 2004	Jun 30, 2004	Jun 2003	May 2004	Jun 30, 2004
	<i>1,000 Pounds</i>	<i>1,000 Pounds</i>	<i>1,000 Pounds</i>	<i>Percent</i>	<i>Percent</i>	<i>1,000 Lbs</i>
Frozen Vegetables						
Asparagus	10,977	10,825	12,907	118	119	
Limas, Fordhook	4,646	2,483	1,958	42	79	
Limas, Baby	20,570	27,102	21,948	107	81	
Green Beans, Reg. Cut	55,559	58,805	50,853	92	86	
Green Beans, Fr. Style	7,272	9,295	6,392	88	69	
Broccoli, Spears	53,689	49,910	50,271	94	101	
Broccoli, Chopped & Cut	81,782	59,857	58,730	72	98	
Brussels Sprouts	11,053	13,037	11,579	105	89	
Carrots, Diced	36,340	57,651	50,129	138	87	
Carrots, Other	90,741	90,010	75,325	83	84	
Cauliflower	16,083	14,254	12,460	77	87	
Corn, Cut	176,505	268,781	230,622	131	86	
Corn, Cob	108,477	133,870	110,551	102	83	
Mixed Vegetables	42,360	51,760	55,971	132	108	
Okra	35,847	20,104	33,105	92	165	
Onion Rings	7,772	9,525	8,674	112	91	
Onions, Other	28,757	32,000	29,028	101	91	
Blackeye Peas	5,340	2,920	3,004	56	103	
Green Peas	162,836	65,225	212,210	130	325	
Peas & Carrots Mixed	7,897	5,262	5,685	72	108	
Spinach	104,522	88,861	83,205	80	94	
Squash, Summer/Zucchini	33,549	29,224	31,948	95	109	
Southern Greens	20,243	16,397	16,330	81	100	
Other Vegetables	265,556	259,857	249,610	94	96	
Total	1,388,373	1,377,015	1,422,495	102	103	1,013,942
Potatoes						
French Fries	900,194	894,667	856,358	95	96	
Other Frozen	281,594	291,270	259,610	92	89	
Total	1,181,788	1,185,937	1,115,968	94	94	858,368

See footnote(s) at end of table.

--continued

**Stocks in Cold Storage: By Commodity,  
United States, June 2004 (Continued)**

Commodity	Stocks in All Warehouses			Percent of		Public Warehouse Stocks
	Jun 30, 2003	May 31, 2004	Jun 30, 2004	Jun 2003	May 2004	Jun 30, 2004
	<i>1,000 Pounds</i>	<i>1,000 Pounds</i>	<i>1,000 Pounds</i>	<i>Percent</i>	<i>Percent</i>	<i>1,000 Lbs</i>
<b>Meat</b>						
Frozen Beef						
Boneless <sup>4</sup>	322,555	350,915	363,540	113	104	
Beef Cuts <sup>5</sup>	48,922	51,908	47,460	97	91	
Total	371,477	402,823	411,000	111	102	409,543
(Government Owned)	1,280	4,453	4,060	317	91	
Frozen Pork						
Picnics, Bone-in	7,822	12,710	10,307	132	81	
Hams, Total	113,219	65,728	68,071	60	104	65,885
Bone-in	66,249	33,184	35,261	53	106	34,727
Boneless <sup>6</sup>	46,970	32,544	32,810	70	101	31,158
Bellies	43,504	41,366	37,102	85	90	
Loins, Total	28,747	29,974	24,204	84	81	21,669
Bone-in	12,628	18,213	16,183	128	89	
Boneless <sup>7</sup>	16,119	11,761	8,021	50	68	
Ribs <sup>8</sup>	55,570	54,162	38,884	70	72	
Butts	8,805	7,144	4,442	50	62	
Trimming <sup>9</sup>	42,159	41,268	28,763	68	70	
Other <sup>10</sup>	68,130	73,004	73,985	109	101	
Variety Meats <sup>11</sup>	47,736	47,109	45,636	96	97	
Unclassified <sup>12</sup>	44,320	46,438	47,899	108	103	
Total	460,012	418,903	379,293	82	91	332,876
(Government Owned)	1,069	747	605	57	81	
Other						
Veal	4,072	5,306	5,617	138	106	
Lamb & Mutton	5,427	3,504	3,866	71	110	
Total	9,499	8,810	9,483	100	108	9,455
Canned						
Canned Hams	6,070	4,432	3,457	57	78	
Other Canned Meat	429	353	150	35	42	
Total	6,499	4,785	3,607	56	75	3,443
Total	847,487	835,321	803,383	95	96	755,317
<b>Miscellaneous</b>						
Cooler	567,979	628,889	629,180	111	100	293,195
Freezer	2,241,809	1,913,655	1,975,735	88	103	1,909,624
Total	2,809,788	2,542,544	2,604,915	93	102	2,202,819
<b>Commodities</b>						
Stored in Coolers	2,816,315	3,158,131	2,767,766	98	88	1,259,930
Stored in Freezers	10,446,875	10,062,924	10,178,864	97	101	6,858,202
Total	13,263,190	13,221,055	12,946,630	98	98	8,118,132

<sup>1</sup> Boneless.

<sup>2</sup> All Products.

<sup>3</sup> Adjusted to 42.0 degrees Brix equivalent (9.896 pounds per gallon).

<sup>4</sup> Includes all boxed boneless beef, such as ground beef, roasts, steaks, loins, strips, rounds, trimmings, etc. Variety meats (edible offal), such as tongues, livers, hearts, kidneys, and other organs removed from slaughtered beef, are included as miscellaneous freezer stocks.

<sup>5</sup> Includes all boxed primal beef cuts, bone-in.

<sup>6</sup> Includes full ham, bone removed and individual muscles separated.

<sup>7</sup> Includes pork tenderloins.

<sup>8</sup> Includes spareribs and backribs.

<sup>9</sup> Includes 42% regular trimmings, 72% special trimmings, boneless picnic meat, jowls, neckbone trimmings, blade, cheek, head, and shank meat, etc. Packaged bacon, sausage, and processed items, such as hot dogs and luncheon meats, are included in miscellaneous cooler or freezer stocks.

<sup>10</sup> Includes ears, tails, feet, neckbones and snouts.

<sup>11</sup> Includes tongues, kidneys, livers, stomachs, hearts, chitterlings, salivary glands, and other organs removed from slaughtered hogs.

<sup>12</sup> Includes product unable to be classified elsewhere in this report.

**Stocks in Cold Storage: By Commodity, Region,  
and United States, May 31, 2004**

Commodity	New England	Middle Atlantic	East North Central	West North Central	South Atlantic
	<i>1,000 Pounds</i>	<i>1,000 Pounds</i>	<i>1,000 Pounds</i>	<i>1,000 Pounds</i>	<i>1,000 Pounds</i>
Total Fresh Apples	3,626	125,696	49,777		50,102
Nuts					
Shelled					
Peanuts		692	178	24	259,775
Pecans <sup>1</sup>		123			11,128
In-Shell					
Pecans <sup>1</sup>					22,337
Dairy Products					
Natural Cheese					
American, Total	24,682	55,711	221,272	126,619	7,583
Other Natural Cheese	441	19,869	124,790	54,757	198
Frozen Poultry					
Chicken					
Broilers, Fryers					
Roasters (Whole)		1,729	199	737	3,902
Hens, Mature Chickens	34	284	59	296	520
Other	1,026	16,772	12,888	30,599	222,986
Total Chicken	1,060	18,785	13,146	31,632	227,408
Turkeys					
Whole Turkeys	815	12,955	2,181	63,054	73,743
Other Turkey	157	10,103	21,981	65,232	123,805
Total Turkey	972	23,058	24,162	128,286	197,548
Ducks		318	442		80
Total Poultry	2,032	42,161	37,750	159,918	425,036
Frozen Fruit					
Apples	28	15,599	26,605	87	608
Blueberries	8,934	3,995	13,190	1,048	797
Cherries, Tart (RTP)		1,598	19,015	41	559
Cherries, Sweet	1	141	1,830	864	3
Peaches	14	1,696	3,815	1,888	379
Raspberries, Red	3	679	747	287	205
Strawberries, Total	27	6,846	6,961	2,248	3,902
Other Frozen Fruit	61	10,386	135,915	2,524	2,175

See footnote(s) at end of table.

--continued



**Stocks in Cold Storage: By Commodity, Region,  
and United States, May 31, 2004 (continued)**

Commodity	East South Central	West South Central	Mountain	Pacific	US Total
	<i>1,000 Pounds</i>	<i>1,000 Pounds</i>	<i>1,000 Pounds</i>	<i>1,000 Pounds</i>	<i>1,000 Pounds</i>
Total Fresh Apples		2,940	1,722	690,017	923,880
Nuts					
Shelled					
Peanuts	31,583	103,302	80	218	395,852
Pecans <sup>1</sup>	1,426	23,567		105	36,349
In-Shell					
Pecans <sup>1</sup>	2,101	96,901			121,339
Dairy Products					
Natural Cheese					
American, Total	120	4,647	27,976	92,477	561,087
Other Natural Cheese	2,504	116	4,428	12,405	219,508
Frozen Poultry					
Chicken					
Broilers, Fryers					
Roasters (Whole)	5,732	8,975	240	2,087	23,601
Hens, Mature Chickens	369	850		1,128	3,540
Other	138,274	191,035	3,025	26,100	642,705
Total Chicken	144,375	200,860	3,265	29,315	669,846
Turkeys					
Whole Turkeys	2,661	97,027	9,844	25,258	287,538
Other Turkey	2,154	29,534	11,556	19,064	283,586
Total Turkey	4,815	126,561	21,400	44,322	571,124
Ducks	18	83	53	49	1,043
Total Poultry	149,208	327,504	24,718	73,686	1,242,013
Frozen Fruit					
Apples	39	1,068	58	9,805	53,897
Blueberries	140	654	154	8,592	37,504
Cherries, Tart (RTP)		95	559	2,104	23,971
Cherries, Sweet	1	30	650	1,770	5,290
Peaches	17	589	49	17,767	26,214
Raspberries, Red	147	175	11	16,100	18,354
Strawberries, Total	1,163	31,868	123	266,280	319,418
Other Frozen Fruit	145	13,305	4,864	66,031	235,406

See footnote(s) at end of table.

--continued

**Stocks in Cold Storage: By Commodity, Region,  
and United States, May 31, 2004 (continued)**

Commodity	New England	Middle Atlantic	East North Central	West North Central	South Atlantic
	<i>1,000 Pounds</i>	<i>1,000 Pounds</i>	<i>1,000 Pounds</i>	<i>1,000 Pounds</i>	<i>1,000 Pounds</i>
Frozen Juice					
Orange Juice Conc. <sup>2</sup>	26		840	158	2,176,810
Other Juice Concentrate	31,432	24,964	15,364	994	122,604
Frozen Vegetables <sup>3</sup>					
Asparagus		709	5,958	59	360
Limas, Fordhook		753	478		263
Limas, Baby		4,327	1,528	1	3,887
Green Beans, Reg. Cut		7,245	10,583	797	6,235
Green Beans, Fr. Style		2,377	1,934	140	668
Broccoli, Spears		5,584	6,715	1	3,872
Broccoli, Chopped & Cut		5,396	5,905	5,367	6,456
Brussels Sprouts		1,439	1,268		2,684
Carrots, Diced		7,361	16,266	288	4,193
Carrots, Other		8,622	10,986	533	5,826
Cauliflower		2,638	1,840	116	1,034
Corn, Cut		21,949	42,270	19,951	13,111
Corn, Cob		10,845	17,168	8,155	8,602
Mixed Vegetables		3,967	7,035	25	2,424
Okra		1,033	316		3,739
Onion Rings		278	4,049	1,565	1,573
Onions, Other		4,807	4,983	359	2,121
Blackeye Peas		366	54		960
Green Peas		8,975	7,547	2,395	2,881
Peas & Carrots Mixed		872	846		507
Spinach		10,583	3,530	66	4,201
Squash, Summer/Zucchini		1,792	6,328		3,627
Southern Greens		1,587	366	1	3,085
Other Vegetables		31,475	35,834	7,174	19,344
Potatoes					
French Fries	33,921	21,538	61,253	97,455	24,744
Other Frozen	5,156	13,658	39,456	5,326	4,449
Meat					
Frozen Beef					
Boneless <sup>4</sup>	1,035	53,093	36,107	107,363	29,098
Beef Cuts <sup>5</sup>	175	2,091	8,149	7,203	3,938
Frozen Pork					
Ribs <sup>6</sup>	209	1,346	12,038	25,750	6,761
Trimmings <sup>7</sup>		343	14,985	20,097	1,057
Other <sup>8</sup>	1,744	895	11,686	32,255	12,990
Other					
Veal		1,408	1,180	152	27
Lamb & Mutton		375	632	105	407

See footnote(s) at end of table.

--continued

**Stocks in Cold Storage: By Commodity, Region,  
and United States, May 31, 2004 (continued)**

Commodity	East South Central	West South Central	Mountain	Pacific	US Total
	<i>1,000 Pounds</i>	<i>1,000 Pounds</i>	<i>1,000 Pounds</i>	<i>1,000 Pounds</i>	<i>1,000 Pounds</i>
Frozen Juice					
Orange Juice Concentrate	43	2,448	122	81,557	2,262,004
Other Juice Concentrate	182	15,068	1,048	118,092	329,748
Frozen Vegetables <sup>3</sup>					
Asparagus		289	6	3,444	10,825
Limas, Fordhook		110	2	877	2,483
Limas, Baby		963	3,962	12,434	27,102
Green Beans, Reg. Cut		1,302	208	32,435	58,805
Green Beans, Fr. Style		236	25	3,915	9,295
Broccoli, Spears		18,933	964	13,841	49,910
Broccoli, Chopped & Cut		17,561	277	18,895	59,857
Brussels Sprouts		281	3	7,362	13,037
Carrots, Diced		1,293	16	28,234	57,651
Carrots, Other		11,168	146	52,729	90,010
Cauliflower		2,103	10	6,513	14,254
Corn, Cut		2,264	137	169,099	268,781
Corn, Cob		1,340	29	87,731	133,870
Mixed Vegetables		10,015	25	28,269	51,760
Okra		14,466		550	20,104
Onion Rings		891	764	405	9,525
Onions, Other		2,438	2,516	14,776	32,000
Blackeye Peas		889		651	2,920
Green Peas		1,896	6,746	34,785	65,225
Peas & Carrots Mixed		578	45	2,414	5,262
Spinach		11,225	38	59,218	88,861
Squash, Summer/Zucchini		5,641	875	10,961	29,224
Southern Greens		9,458		1,900	16,397
Other Vegetables		31,174	7,957	126,899	259,857
Potatoes					
French Fries	7,330	11,268	177,236	459,922	894,667
Other Frozen	1,342	26,036	49,950	145,897	291,270
Meat					
Frozen Beef					
Boneless <sup>4</sup>	3,584	68,061	6,401	46,173	350,915
Beef Cuts <sup>5</sup>	4,382	8,136	8,192	9,642	51,908
Frozen Pork					
Ribs <sup>6</sup>	2,818	2,689	161	2,390	54,162
Trimmings <sup>7</sup>	216	4,067	25	478	41,268
Other <sup>8</sup>	9,024	2,820	395	1,195	73,004
Other					
Veal		212		2,327	5,306
Lamb & Mutton		433	59	1,493	3,504

<sup>1</sup> East North Central combined with South Atlantic. Mountain and West North Central combined with West South Central.

<sup>2</sup> Middle Atlantic combined with South Atlantic.

<sup>3</sup> New England combined with Middle Atlantic. East South Central combined with South Atlantic.

<sup>4</sup> Includes all boxed boneless beef, such as ground beef, roasts, steaks, loins, strips, rounds, trimmings, etc. Variety meats (edible offal), such as tongues, livers, hearts, kidneys, and other organs removed from slaughtered beef, are included as miscellaneous freezer stocks.

<sup>5</sup> Includes all boxed primal beef cuts, bone-in.

<sup>6</sup> Includes spareribs and backribs.

<sup>7</sup> Includes 42% regular trimmings, 72% special trimmings, boneless picnic meat, jowls, neckbone trimmings, blade, cheek, head, and shank meat, etc. Packaged bacon, sausage, and processed items, such as hot dogs and luncheon meats, are included in miscellaneous cooler or freezer stocks.

<sup>8</sup> Includes ears, tails, feet, neckbones and snouts.

<sup>9</sup> Includes tongues, kidneys, livers, stomachs, hearts, chitterlings, salivary glands, and other organs removed from slaughtered hogs.

<sup>10</sup> Includes product unable to be classified elsewhere in this report.

**Stocks in Cold Storage: By Commodity, Region,  
and United States, June 30, 2004**

Commodity	New England	Middle Atlantic	East North Central	West North Central	South Atlantic
	<i>1,000 Pounds</i>	<i>1,000 Pounds</i>	<i>1,000 Pounds</i>	<i>1,000 Pounds</i>	<i>1,000 Pounds</i>
Total Fresh Apples	294	75,379			24,018
Nuts					
Shelled					
Peanuts		646	148	24	253,201
Pecans <sup>1</sup>		113			11,286
In-Shell					
Pecans <sup>1</sup>					16,731
Dairy Products					
Natural Cheese					
American, Total	25,194	59,141	232,137	131,031	9,497
Other Natural Cheese	322	20,686	126,105	56,496	128
Frozen Poultry					
Chicken					
Broilers, Fryers					
Roasters (Whole)		1,723	168	776	3,920
Hens, Mature Chickens	37	320	74	351	515
Other	962	17,612	14,384	39,503	243,848
Total Chicken	999	19,655	14,626	40,630	248,283
Turkeys					
Whole Turkeys	1,329	19,804	4,805	54,839	84,477
Other Turkey	117	12,506	19,648	62,732	123,703
Total Turkey	1,446	32,310	24,453	117,571	208,180
Ducks		263	396	1	81
Total Poultry	2,445	52,228	39,475	158,202	456,544
Frozen Fruit					
Apples	24	13,903	21,353	68	587
Blueberries	7,165	4,709	10,520	630	2,102
Cherries, Tart (RTP)		1,269	13,717	48	413
Cherries, Sweet	1	142	1,517	737	3
Peaches	12	1,399	3,322	2,050	338
Raspberries, Red	3	892	903	172	255
Strawberries, Total	30	6,805	7,044	2,016	4,497
Other Frozen Fruit	88	10,078	113,859	2,547	1,955

See footnote(s) at end of table.

--continued

**Stocks in Cold Storage: By Commodity, Region,  
and United States, June 30, 2004 (continued)**

Commodity	East South Central	West South Central	Mountain	Pacific	US Total
	<i>1,000 Pounds</i>	<i>1,000 Pounds</i>	<i>1,000 Pounds</i>	<i>1,000 Pounds</i>	<i>1,000 Pounds</i>
Total Fresh Apples		1,260	882	456,171	558,004
Nuts					
Shelled					
Peanuts	34,941	110,711	82	215	399,968
Pecans <sup>1</sup>	1,315	24,353		106	37,173
In-Shell					
Pecans <sup>1</sup>	2,102	80,277			99,110
Dairy Products					
Natural Cheese					
American, Total	87	5,780	32,840	95,002	590,709
Other Natural Cheese	2,519	108	4,939	14,106	225,409
Frozen Poultry					
Chicken					
Broilers, Fryers					
Roasters (Whole)	4,796	8,946	260	2,231	22,820
Hens, Mature Chickens	398	926		1,192	3,813
Other	157,033	222,667	2,871	27,584	726,464
Total Chicken	162,227	232,539	3,131	31,007	753,097
Turkeys					
Whole Turkeys	3,849	98,437	12,727	26,698	306,965
Other Turkey	2,513	31,658	13,136	18,602	284,615
Total Turkey	6,362	130,095	25,863	45,300	591,580
Ducks	16	83	51	50	941
Total Poultry	168,605	362,717	29,045	76,357	1,345,618
Frozen Fruit					
Apples	26	619	56	9,351	45,987
Blueberries	149	619	69	8,920	34,883
Cherries, Tart (RTP)		21	402	1,403	17,273
Cherries, Sweet	1	44	581	2,005	5,031
Peaches	13	472	41	15,308	22,955
Raspberries, Red	101	160	16	24,006	26,508
Strawberries, Total	1,226	34,217	112	363,937	419,884
Other Frozen Fruit	128	14,221	2,180	60,267	205,323

See footnote(s) at end of table.

--continued

**Stocks in Cold Storage: By Commodity, Region,  
and United States, June 30, 2004 (continued)**

Commodity	New England	Middle Atlantic	East North Central	West North Central	South Atlantic
	<i>1,000 Pounds</i>	<i>1,000 Pounds</i>	<i>1,000 Pounds</i>	<i>1,000 Pounds</i>	<i>1,000 Pounds</i>
Frozen Juice					
Orange Juice Conc. <sup>2</sup>	25		917	196	2,139,519
Other Juice Concentrate	18,103	23,651	16,475	999	103,580
Frozen Vegetables <sup>3</sup>					
Asparagus		747	6,881	27	216
Limas, Fordhook		600	362		179
Limas, Baby		3,610	1,284	1	3,280
Green Beans, Reg. Cut		6,371	10,568	739	5,579
Green Beans, Fr. Style		1,543	1,611	169	505
Broccoli, Spears		5,799	6,114	1	3,941
Broccoli, Chopped & Cut		5,183	6,206	4,232	6,616
Brussels Sprouts		1,193	1,027		2,644
Carrots, Diced		6,021	15,587	482	3,596
Carrots, Other		7,867	8,810	533	4,982
Cauliflower		2,374	1,548	100	926
Corn, Cut		19,359	31,948	15,358	11,277
Corn, Cob		9,791	10,952	5,954	6,983
Mixed Vegetables		4,352	7,860	37	2,669
Okra		1,396	327		4,334
Onion Rings		312	3,289	1,378	1,619
Onions, Other		4,683	4,284	339	2,017
Blackeye Peas		346	48		970
Green Peas		20,578	14,031	5,647	6,631
Peas & Carrots Mixed		1,166	844	1	504
Spinach		10,750	3,416	174	4,245
Squash, Summer/Zucchini		1,762	5,663		3,860
Southern Greens		1,486	425	1	2,619
Other Vegetables		30,936	33,326	5,212	18,963
Potatoes					
French Fries	32,743	16,805	68,968	114,135	23,443
Other Frozen	4,596	13,209	37,159	6,172	3,943
Meat					
Frozen Beef					
Boneless <sup>4</sup>	995	52,553	39,531	108,508	29,394
Beef Cuts <sup>5</sup>	118	2,304	7,097	6,405	3,495
Frozen Pork					
Ribs <sup>6</sup>	151	762	9,524	17,172	5,131
Trimmings <sup>7</sup>		214	8,527	15,768	940
Other <sup>8</sup>	1,569	1,060	11,015	34,720	11,920
Other					
Veal		1,439	1,199	162	54
Lamb & Mutton		320	621	759	341

See footnote(s) at end of table.

--continued

**Stocks in Cold Storage: By Commodity, Region,  
and United States, June 30, 2004 (continued)**

Commodity	East South Central	West South Central	Mountain	Pacific	US Total
	<i>1,000 Pounds</i>	<i>1,000 Pounds</i>	<i>1,000 Pounds</i>	<i>1,000 Pounds</i>	<i>1,000 Pounds</i>
Frozen Juice					
Orange Juice Concentrate	41	2,425	161	78,261	2,221,545
Other Juice Concentrate	157	15,022	848	113,695	292,530
Frozen Vegetables <sup>3</sup>					
Asparagus		460	33	4,543	12,907
Limas, Fordhook		99	2	716	1,958
Limas, Baby		870	3,812	9,091	21,948
Green Beans, Reg. Cut		1,009	65	26,522	50,853
Green Beans, Fr. Style		172	44	2,348	6,392
Broccoli, Spears		18,920	971	14,525	50,271
Broccoli, Chopped & Cut		18,991	339	17,163	58,730
Brussels Sprouts		264		6,451	11,579
Carrots, Diced		1,281	15	23,147	50,129
Carrots, Other		8,819	103	44,211	75,325
Cauliflower		2,190	2	5,320	12,460
Corn, Cut		2,032	179	150,469	230,622
Corn, Cob		1,518	23	75,330	110,551
Mixed Vegetables		10,938	4	30,111	55,971
Okra		26,271		777	33,105
Onion Rings		845	667	564	8,674
Onions, Other		2,391	2,308	13,006	29,028
Blackeye Peas		1,066		574	3,004
Green Peas		3,746	12,088	149,489	212,210
Peas & Carrots Mixed		462	28	2,680	5,685
Spinach		8,951	18	55,651	83,205
Squash, Summer/Zucchini		5,304	1,321	14,038	31,948
Southern Greens		9,314		2,485	16,330
Other Vegetables		27,670	5,262	128,241	249,610
Potatoes					
French Fries	7,172	10,986	177,027	405,079	856,358
Other Frozen	1,198	21,556	57,874	113,903	259,610
Meat					
Frozen Beef					
Boneless <sup>4</sup>	4,070	71,945	6,426	50,118	363,540
Beef Cuts <sup>5</sup>	3,938	7,760	7,892	8,451	47,460
Frozen Pork					
Ribs <sup>6</sup>	2,176	2,321	23	1,624	38,884
Trimming <sup>7</sup>	197	2,795	10	312	28,763
Other <sup>8</sup>	8,826	2,530	377	1,968	73,985
Other					
Veal		183	2	2,578	5,617
Lamb & Mutton		143	52	1,630	3,866

<sup>1</sup> East North Central combined with South Atlantic. Mountain and West North Central Combined with West South Central.

<sup>2</sup> Middle Atlantic combined with South Atlantic.

<sup>3</sup> New England combined with Middle Atlantic. East South Central combined with South Atlantic.

<sup>4</sup> Includes all boxed boneless beef, such as ground beef, roasts, steaks, loins, strips, rounds, trimmings, etc. Variety meats (edible offal), such as tongues, livers, hearts, kidneys, and other organs removed from slaughtered beef, are included as miscellaneous freezer stocks.

<sup>5</sup> Includes all boxed primal beef cuts, bone-in.

<sup>6</sup> Includes spareribs and backribs.

<sup>7</sup> Includes 42% regular trimmings, 72% special trimmings, boneless picnic meat, jowls, neckbone trimmings, blade, cheek, head, and shank meat, etc. Packaged bacon, sausage, and processed items, such as hot dogs and luncheon meats, are included in miscellaneous cooler or freezer stocks.

<sup>8</sup> Includes ears, tails, feet, neckbones and snouts.

<sup>9</sup> Includes tongues, kidneys, livers, stomachs, hearts, chitterlings, salivary glands, and other organs removed from slaughtered hogs.

<sup>10</sup> Includes product unable to be classified elsewhere in this report.

**Public General Warehouses: Cold Storage Space Occupied  
by Region and United States, June 2004**

Region	Cooler				Freezer			
	Usable Space	Usable Space Occupied			Usable Space	Usable Space Occupied		
		Jun 30 2004	Jun 30 2003	May 31 2004		Jun 30 2004	Jun 30 2003	May 31 2004
	<i>1,000 Cu Ft</i>	<i>Percent</i>	<i>Percent</i>	<i>Percent</i>	<i>1,000 Cu Ft</i>	<i>Percent</i>	<i>Percent</i>	<i>Percent</i>
New England	1,741	64	78	77	15,747	65	72	74
Middle Atlantic	46,615	51	57	55	136,132	51	55	55
E. North Central	53,741	49	53	56	212,828	44	52	54
W. North Central	46,175	43	45	48	160,076	54	57	59
South Atlantic	51,521	29	35	40	198,954	48	56	59
E. South Central	9,789	48	47	52	71,316	37	45	50
W. South Central	29,209	27	30	30	139,625	47	50	55
Mountain	12,213	43	46	49	60,930	57	62	64
Pacific	55,446	37	40	39	317,941	55	63	63
US	306,450	40	45	46	1,313,549	50	56	58

## Cold Storage Regions





**Survey Procedures:** Questionnaires are mailed about the 24th of each month to all operators on the list of approximately 1,400 public and private cold storage warehouses. In addition, apple data are obtained from special surveys and other sources (State Departments of Agriculture, U.S. Apple Association, etc.). All survey data represent stocks as of the end of the month.

Data are collected from warehouses artificially cooled to a temperature of 50 degrees Fahrenheit or lower, and whose food products are normally stored for 30 days or more. All food items in these facilities are reported regardless of the number of days stored at the time of the report. Also included are specialized storage facilities meeting the 30 day requirement, such as fruit houses, dairy manufacturing plants, frozen fruit, fruit juice, and vegetable processors, and poultry and meat packing plants. Excluded are stocks in space maintained by wholesalers, jobbers, distributors, chain stores, locker plants containing individual lockers, meat packer branch houses, and frozen food processors whose entire inventories are turned over more than once a month.

**Estimating Procedures:** Data for reporting firms are added to estimates for non-reporting firms to obtain regional and National totals. Estimates for non-reporting firms are obtained by multiplying the previous month's figure by a percent change from the previous month. The percent change is calculated for each item from totals of the current and previous month summed from firms that reported both months.

**Revision Policy:** Data are revised the following month based on late reports or corrected data. Final figures are published in the annual summary in February of the following year.

**Reliability:** Reports are received from 900 firms each month which represent about 70 percent of the total capacity. Firms that are not on the list or firms who have never reported are not represented in the data. Monthly data can vary due to different firms reporting month to month. Survey data are also subject to non-sampling errors such as omissions and mistakes in reporting and in processing the data. While these errors cannot be measured directly, they are minimized by carefully reviewing all reported data for consistency and reasonableness.

## ACCESS TO REPORTS!!

---

For your convenience, there are several ways to obtain NASS reports, data products, and services:

### INTERNET ACCESS

All NASS reports are available free of charge on the worldwide Internet. For access, connect to the Internet and go to the NASS Home Page at: [www.usda.gov/nass/](http://www.usda.gov/nass/). Select "Today's Reports" or Publications and then Reports Calendar or Publications and then Search, by Title or Subject.

### E-MAIL SUBSCRIPTION

All NASS reports are available by subscription free of charge direct to your e-mail address. Starting with the NASS Home Page at [www.usda.gov/nass/](http://www.usda.gov/nass/), click on **Publications**, then click on the **Subscribe by E-mail** button which takes you to the page describing e-mail delivery of reports. Finally, click on **Go to the Subscription Page** and follow the instructions.

-----

### PRINTED REPORTS OR DATA PRODUCTS

**CALL OUR TOLL-FREE ORDER DESK: 800-999-6779 (U.S. and Canada)**  
**Other areas, please call 703-605-6220      FAX: 703-605-6900**  
**(Visa, MasterCard, check, or money order acceptable for payment.)**

-----

### ASSISTANCE

For **assistance** with general agricultural statistics or further information about NASS or its products or services, contact the **Agricultural Statistics Hotline** at **800-727-9540**, 7:30 a.m. to 4:00 p.m. ET, or e-mail: [nass@nass.usda.gov](mailto:nass@nass.usda.gov).

The United States Department of Agriculture (USDA) prohibits discrimination in all its programs on the basis of race, color, national origin, gender, religion, age, disability, political beliefs, sexual orientation, and marital or family status. (Not all prohibited bases apply to all programs.) Persons with disabilities who require alternative means for communication of program information (braille, large print, audiotape, etc.) should contact the USDA's TARGET Center at 202-720-2600 (voice and TDD).

To file a complaint of discrimination, write USDA, Director, Office of Civil Rights, Room 326-W, Whitten Building, 1400 Independence Avenue, SW, Washington, D.C., 20250-9410, or call 202-720-5964 (voice or TDD). USDA is an equal opportunity provider and employer.