



Cold Storage

Released August 20, 2004, by the National Agricultural Statistics Service (NASS), Agricultural Statistics Board, U.S. Department of Agriculture. For information on *Cold Storage* call Perry Game at (202) 720-8784, office hours 7:00 a.m. to 3:30 p.m. ET.

Highlights

Frozen food stocks in refrigerated warehouses on July 31, 2004 were greater than year earlier levels for orange juice, beef, cheese, frozen fruit, chicken, and vegetables.

Butter stocks were down slightly from last month, but down 34 percent from a year ago.

Total red meat supplies in freezers were up 1 percent from last month, but down 2 percent from last year. Frozen pork supplies were down 2 percent from last month and down 16 percent from the previous year. Stocks of pork bellies were down 37 percent from last month and down 27 percent from last year.

Total frozen poultry supplies on July 31, 2004 were 2 percent lower than the previous month and 3 percent lower than a year ago. Total stocks of chicken were down 5 percent from the previous month, but 13 percent higher than last year. Total pounds of turkey in freezers were up 1 percent from last month, but down 17 percent from July 31, 2003.

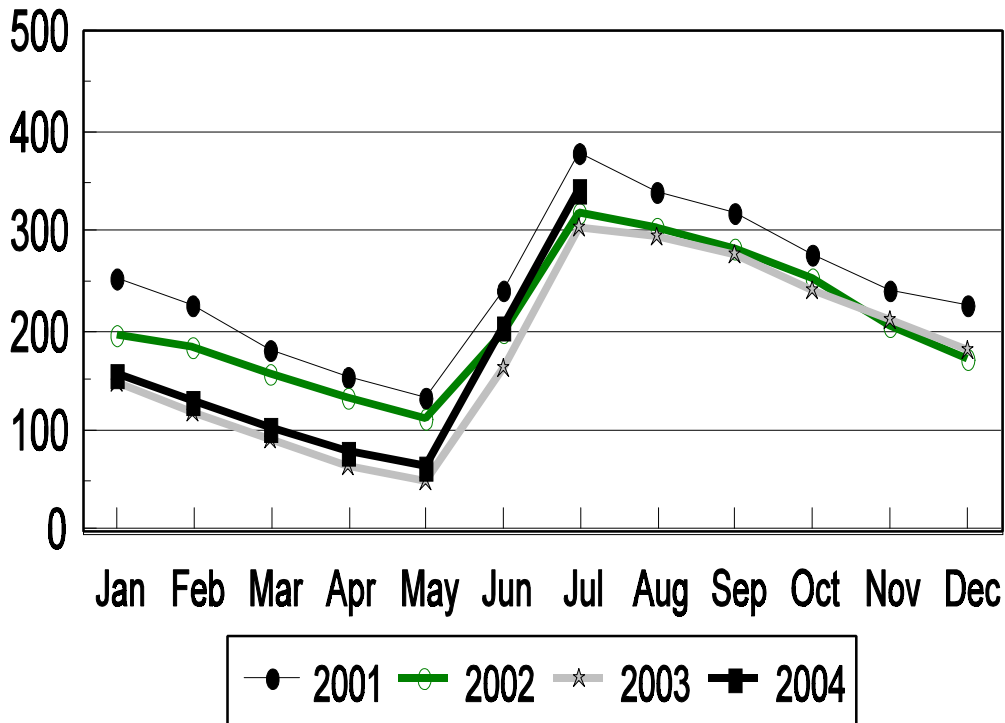
This page is intentionally blank.

Contents

	Page
Stocks in Cold Storage: By Commodity, United States, July 2004	4
Stocks in Cold Storage: By Commodity, Region, and United States, June 30, 2004	8
Stocks in Cold Storage: By Commodity, Region, and United States, July 31, 2004	12
Public General Warehouses: Cold Storage Space Occupied by Region and United States, July 2004	16
Survey and Estimating Procedures, Revision Policy and Reliability	17
Access to Reports	18

Frozen Green Peas-United States Cold Storage Stocks, 2001-2004

Million Pounds



**Stocks in Cold Storage: By Commodity,
United States, July 2004**

Commodity	Stocks in All Warehouses			Percent of		Public Warehouse Stocks
	Jul 31, 2003	Jun 30, 2004	Jul 31, 2004	Jul 2003	Jun 2004	Jul 31, 2004
	<i>1,000 Pounds</i>	<i>1,000 Pounds</i>	<i>1,000 Pounds</i>	<i>Percent</i>	<i>Percent</i>	<i>1,000 Lbs</i>
Apples						
Regular Storage	17,857	8,030	6,308	35	79	
Controlled Atmosphere	392,505	549,974	267,982	68	49	
Total	410,362	558,004	274,290	67	49	166
Pears						
Bartlett	12,779	1,284	27,470	215	2,139	
Other Varieties	28	13,708	8,446	30,164	62	
Total	12,807	14,992	35,916	280	240	14,847
Nuts						
Shelled						
Peanuts	367,363	391,829	398,109	108	102	
Pecans	37,841	37,341	37,870	100	101	
Other Shelled	129,633	122,970	98,368	76	80	
Total	534,837	552,140	534,347	100	97	251,903
In-Shell						
Peanuts	24,235	36,971	28,199	116	76	
Pecans	28,847	102,426	78,658	273	77	
Other In-Shell	16,846	6,815	6,134	36	90	
Total	69,928	146,212	112,991	162	77	38,692
Dairy Products						
Butter, Total	283,879	187,183	187,116	66	100	168,470
(Government Owned)	11,183	155	136	1	88	
Natural Cheese						
American, Total	552,455	590,292	621,530	113	105	
(Government Owned)	6,141	8,658	7,076	115	82	
Swiss	28,896	24,108	28,697	99	119	
Other Natural Cheese	227,612	227,342	224,626	99	99	
Total	808,963	841,742	874,853	108	104	485,038
Eggs, Frozen						
Whites	2,684	2,755	2,567	96	93	
Yolks	1,155	1,104	1,388	120	126	
Whole & Mixed	11,104	10,798	9,493	85	88	
Unclassified	3,627	3,599	3,278	90	91	
Total	18,570	18,256	16,726	90	92	16,234
Frozen Poultry						
Chicken						
Broilers, Fryers						
Roasters (Whole)	32,460	22,830	21,711	67	95	
Hens, Mature Chickens	3,740	4,603	3,276	88	71	
Breasts & Breast Meat	103,058	92,563	99,274	96	107	
Drumsticks	12,362	12,219	16,806	136	138	
Leg Quarters	67,957	150,225	97,960	144	65	
Legs	13,062	11,470	9,700	74	85	
Thigh & Thigh Quarters	6,491	8,097	7,442	115	92	
Thigh Meat ¹	13,730	14,919	16,419	120	110	
Wings ²	33,850	31,906	34,601	102	108	
Paws and Feet	10,583	19,207	19,091	180	99	
Other	338,297	388,621	389,972	115	100	
Total Chicken	635,590	756,660	716,252	113	95	

See footnote(s) at end of table.

--continued

**Stocks in Cold Storage: By Commodity,
United States, July 2004**

Commodity	Stocks in All Warehouses			Percent of		Public Warehouse Stocks
	Jul 31, 2003	Jun 30, 2004	Jul 31, 2004	Jul 2003	Jun 2004	Jul 31, 2004
	<i>1,000 Pounds</i>	<i>1,000 Pounds</i>	<i>1,000 Pounds</i>	<i>Percent</i>	<i>Percent</i>	<i>1,000 Lbs</i>
Turkeys						
Toms (Whole Carcasses)	225,010	182,692	189,208	84	104	
Hens (Whole Carcasses)	150,094	127,906	126,717	84	99	
Whole Turkeys	375,104	310,598	315,925	84	102	
Other Turkey	347,439	285,064	287,281	83	101	
Total Turkey	722,543	595,662	603,206	83	101	477,426
Ducks	5,034	936	972	19	104	
Total Poultry	1,363,167	1,353,258	1,320,430	97	98	1,156,363
Frozen Fruit						
Apples	36,737	46,704	38,601	105	83	
Apricots	13,563	14,891	11,320	83	76	
Blackberries, Total	31,838	15,622	42,032	132	269	
IQF	22,330	12,712	27,716	124	218	
Pails and Tubs	1,916	1,595	4,084	213	256	
Barrels, 400 lbs net	7,181	907	9,900	138	1,092	
Concentrate	411	408	332	81	81	
Blueberries	43,247	34,073	77,331	179	227	
Boysenberries	3,337	2,288	3,674	110	161	
Cherries, Tart (RTP)	69,005	17,357	80,043	116	461	
Cherries, Tart (Juice)	1,275	993	1,108	87	112	
Cherries, Sweet	8,881	5,129	9,573	108	187	
Grapes	3,749	3,175	3,064	82	97	
Peaches	23,160	22,968	38,380	166	167	
Raspberries, Black	2,332	1,764	1,814	78	103	
Raspberries, Red, Total	76,000	26,715	89,527	118	335	
IQF	31,256	14,729	42,715	137	290	
Pails and Tubs	15,296	5,113	15,134	99	296	
Barrels, 400 lbs net	29,013	5,805	29,933	103	516	
Concentrate	435	1,068	1,745	401	163	
Strawberries, Total	472,331	424,626	483,466	102	114	
IQF and Poly	228,010	209,612	250,874	110	120	
Pails and Tubs	154,526	130,556	135,136	87	104	
Barrels and Drums	64,989	59,113	74,328	114	126	
Juice Stock	24,806	25,345	23,128	93	91	
Other Frozen Fruit	147,839	198,752	181,263	123	91	
Total	933,294	815,057	1,061,196	114	130	916,223
Frozen Juice						
Orange Juice Conc. ³	1,848,906	2,221,455	2,105,576	114	95	
(Gallon Equivalent)	186,834	224,480	212,770			
Other Juice Concentrate	313,254	291,105	247,640	79	85	
Total	2,162,160	2,512,560	2,353,216	109	94	246,026

See footnote(s) at end of table.

--continued

**Stocks in Cold Storage: By Commodity,
United States, July 2004**

Commodity	Stocks in All Warehouses			Percent of		Public Warehouse Stocks
	Jul 31, 2003	Jun 30, 2004	Jul 31, 2004	Jul 2003	Jun 2004	Jul 31, 2004
	<i>1,000 Pounds</i>	<i>1,000 Pounds</i>	<i>1,000 Pounds</i>	<i>Percent</i>	<i>Percent</i>	<i>1,000 Lbs</i>
Frozen Vegetables						
Asparagus	10,361	14,064	15,310	148	109	
Limas, Fordhook	3,971	1,960	1,453	37	74	
Limas, Baby	15,099	21,716	18,380	122	85	
Green Beans, Reg. Cut	102,965	51,147	110,611	107	216	
Green Beans, Fr. Style	16,971	6,596	16,941	100	257	
Broccoli, Spears	47,843	50,314	50,399	105	100	
Broccoli, Chopped & Cut	85,879	58,843	58,847	69	100	
Brussels Sprouts	10,539	11,588	10,063	95	87	
Carrots, Diced	30,779	49,485	37,778	123	76	
Carrots, Other	82,437	75,288	71,856	87	95	
Cauliflower	13,843	12,518	12,441	90	99	
Corn, Cut	179,163	227,404	232,237	130	102	
Corn, Cob	117,079	109,612	109,227	93	100	
Mixed Vegetables	44,670	56,156	53,995	121	96	
Okra	39,819	33,111	33,756	85	102	
Onion Rings	7,573	8,426	7,870	104	93	
Onions, Other	28,017	28,862	26,902	96	93	
Blackeye Peas	4,470	3,004	2,692	60	90	
Green Peas	303,006	206,413	341,989	113	166	
Peas & Carrots Mixed	7,362	5,674	6,407	87	113	
Spinach	93,370	83,287	75,139	80	90	
Squash, Summer/Zucchini	39,901	31,326	36,288	91	116	
Southern Greens	19,469	16,330	17,894	92	110	
Other Vegetables	271,965	248,416	287,613	106	116	
Total	1,576,551	1,411,540	1,636,088	104	116	1,215,517
Potatoes						
French Fries	859,504	864,111	859,102	100	99	
Other Frozen	270,935	263,341	257,907	95	98	
Total	1,130,439	1,127,452	1,117,009	99	99	835,268

See footnote(s) at end of table.

--continued

**Stocks in Cold Storage: By Commodity,
United States, July 2004 (Continued)**

Commodity	Stocks in All Warehouses			Percent of		Public Warehouse Stocks
	Jul 31, 2003	Jun 30, 2004	Jul 31, 2004	Jul 2003	Jun 2004	Jul 31, 2004
	<i>1,000 Pounds</i>	<i>1,000 Pounds</i>	<i>1,000 Pounds</i>	<i>Percent</i>	<i>Percent</i>	<i>1,000 Lbs</i>
Meat						
Frozen Beef						
Boneless ⁴	317,680	363,657	376,938	119	104	
Beef Cuts ⁵	50,568	47,610	45,880	91	96	
Total	368,248	411,267	422,818	115	103	421,120
(Government Owned)	2,249	4,051	3,285	146	81	
Frozen Pork						
Picnics, Bone-in	7,253	10,348	12,268	169	119	
Hams, Total	121,251	68,071	84,573	70	124	82,360
Bone-in	72,991	35,261	44,861	61	127	44,314
Boneless ⁶	48,260	32,810	39,712	82	121	38,046
Bellies	32,075	37,185	23,394	73	63	
Loins, Total	27,611	24,189	23,437	85	97	20,953
Bone-in	11,546	16,168	15,080	131	93	
Boneless ⁷	16,065	8,021	8,357	52	104	
Ribs ⁸	49,212	39,128	38,019	77	97	
Butts	8,594	4,446	4,806	56	108	
Trimmings ⁹	36,245	28,769	23,391	65	81	
Other ¹⁰	61,566	73,987	73,860	120	100	
Variety Meats ¹¹	55,857	45,639	46,000	82	101	
Unclassified ¹²	40,990	47,897	41,126	100	86	
Total	440,654	379,659	370,874	84	98	330,256
(Government Owned)	784	605	804	103	133	
Other						
Veal	3,797	5,618	5,585	147	99	
Lamb & Mutton	5,929	3,872	4,096	69	106	
Total	9,726	9,490	9,681	100	102	9,618
Canned						
Canned Hams	5,706	3,457	3,751	66	109	
Other Canned Meat	685	150	929	136	619	
Total	6,391	3,607	4,680	73	130	4,460
Total	825,019	804,023	808,053	98	101	765,454
Miscellaneous						
Cooler	527,329	630,562	621,801	118	99	301,064
Freezer	2,115,043	1,971,876	1,982,295	94	101	1,915,522
Total	2,642,372	2,602,438	2,604,096	99	100	2,216,586
Commodities						
Stored in Coolers	2,382,802	2,764,915	2,473,968	104	89	1,269,595
Stored in Freezers	10,389,546	10,179,942	10,462,359	101	103	7,230,617
Total	12,772,348	12,944,857	12,936,327	101	100	8,500,212

¹ Boneless.

² All Products.

³ Adjusted to 42.0 degrees Brix equivalent (9.896 pounds per gallon).

⁴ Includes all boxed boneless beef, such as ground beef, roasts, steaks, loins, strips, rounds, trimmings, etc. Variety meats (edible offal), such as tongues, livers, hearts, kidneys, and other organs removed from slaughtered beef, are included as miscellaneous freezer stocks.

⁵ Includes all boxed primal beef cuts, bone-in.

⁶ Includes full ham, bone removed and individual muscles separated.

⁷ Includes pork tenderloins.

⁸ Includes spareribs and backribs.

⁹ Includes 42% regular trimmings, 72% special trimmings, boneless picnic meat, jowls, neckbone trimmings, blade, cheek, head, and shank meat, etc. Packaged bacon, sausage, and processed items, such as hot dogs and luncheon meats, are included in miscellaneous cooler or freezer stocks.

¹⁰ Includes ears, tails, feet, neckbones and snouts.

¹¹ Includes tongues, kidneys, livers, stomachs, hearts, chitterlings, salivary glands, and other organs removed from slaughtered hogs.

¹² Includes product unable to be classified elsewhere in this report.

**Stocks in Cold Storage: By Commodity, Region,
and United States, June 30, 2004**

Commodity	New England	Middle Atlantic	East North Central	West North Central	South Atlantic
	<i>1,000 Pounds</i>	<i>1,000 Pounds</i>	<i>1,000 Pounds</i>	<i>1,000 Pounds</i>	<i>1,000 Pounds</i>
Total Fresh Apples	294	75,379			24,018
Nuts					
Shelled					
Peanuts		646	148	24	245,062
Pecans ¹		113			11,648
In-Shell					
Pecans ¹					17,065
Dairy Products					
Natural Cheese					
American, Total	25,194	59,141	229,467	132,809	9,497
Other Natural Cheese	322	19,184	128,179	56,549	128
Frozen Poultry					
Chicken					
Broilers, Fryers					
Roasters (Whole)		1,723	168	786	3,920
Hens, Mature Chickens	37	320	74	355	515
Other	975	17,612	14,403	39,530	248,618
Total Chicken	1,012	19,655	14,645	40,671	253,053
Turkeys					
Whole Turkeys	2,326	19,804	4,892	57,514	84,477
Other Turkey	540	12,506	19,654	62,699	123,703
Total Turkey	2,866	32,310	24,546	120,213	208,180
Ducks		263	391	1	81
Total Poultry	3,878	52,228	39,582	160,885	461,314
Frozen Fruit					
Apples	24	13,903	21,353	68	587
Blueberries	6,917	4,709	10,520	618	2,102
Cherries, Tart (RTP)		1,269	13,717	48	413
Cherries, Sweet	1	142	1,517	737	3
Peaches	12	1,399	3,322	2,050	338
Raspberries, Red	2	892	903	172	255
Strawberries, Total	31	6,805	7,044	2,016	4,497
Other Frozen Fruit	134	10,078	107,475	2,547	1,955

See footnote(s) at end of table.

--continued

**Stocks in Cold Storage: By Commodity, Region,
and United States, June 30, 2004 (continued)**

Commodity	East South Central	West South Central	Mountain	Pacific	US Total
	<i>1,000 Pounds</i>	<i>1,000 Pounds</i>	<i>1,000 Pounds</i>	<i>1,000 Pounds</i>	<i>1,000 Pounds</i>
Total Fresh Apples		1,260	882	456,171	558,004
Nuts					
Shelled					
Peanuts	34,941	110,711	82	215	391,829
Pecans ¹	1,312	24,163		105	37,341
In-Shell					
Pecans ¹	2,102	83,259			102,426
Dairy Products					
Natural Cheese					
American, Total	87	5,758	32,580	95,759	590,292
Other Natural Cheese	2,519	142	5,871	14,448	227,342
Frozen Poultry					
Chicken					
Broilers, Fryers					
Roasters (Whole)	4,796	8,946	260	2,231	22,830
Hens, Mature Chickens	398	1,712		1,192	4,603
Other	157,544	220,205	2,842	27,498	729,227
Total Chicken	162,738	230,863	3,102	30,921	756,660
Turkeys					
Whole Turkeys	3,849	98,437	12,471	26,828	310,598
Other Turkey	2,513	31,674	13,137	18,638	285,064
Total Turkey	6,362	130,111	25,608	45,466	595,662
Ducks	16	83	51	50	936
Total Poultry	169,116	361,057	28,761	76,437	1,353,258
Frozen Fruit					
Apples	26	619	80	10,044	46,704
Blueberries	149	619	109	8,330	34,073
Cherries, Tart (RTP)		21	419	1,470	17,357
Cherries, Sweet	1	44	581	2,103	5,129
Peaches	13	472	41	15,321	22,968
Raspberries, Red	101	160	16	24,214	26,715
Strawberries, Total	1,226	34,213	112	368,682	424,626
Other Frozen Fruit	128	14,221	2,180	60,034	198,752

See footnote(s) at end of table.

--continued

**Stocks in Cold Storage: By Commodity, Region,
and United States, June 30, 2004 (continued)**

Commodity	New England	Middle Atlantic	East North Central	West North Central	South Atlantic
	<i>1,000 Pounds</i>	<i>1,000 Pounds</i>	<i>1,000 Pounds</i>	<i>1,000 Pounds</i>	<i>1,000 Pounds</i>
Frozen Juice					
Orange Juice Conc. ²	25		915	196	2,139,770
Other Juice Concentrate	18,595	23,651	16,316	999	102,996
Frozen Vegetables ³					
Asparagus		763	8,045	27	216
Limas, Fordhook		600	362		179
Limas, Baby		3,613	1,284	1	3,280
Green Beans, Reg. Cut		6,428	11,310	617	5,579
Green Beans, Fr. Style		1,574	1,614	169	505
Broccoli, Spears		5,832	6,114	1	3,941
Broccoli, Chopped & Cut		5,240	6,290	4,232	6,616
Brussels Sprouts		1,207	1,027		2,644
Carrots, Diced		6,021	14,922	482	3,596
Carrots, Other		7,877	8,823	533	4,982
Cauliflower		2,374	1,548	100	926
Corn, Cut		19,440	31,939	13,270	11,277
Corn, Cob		9,824	10,789	5,954	6,983
Mixed Vegetables		4,454	7,860	37	2,669
Okra		1,400	327		4,334
Onion Rings		312	3,289	1,131	1,619
Onions, Other		4,692	4,192	333	2,017
Blackeye Peas		346	48		970
Green Peas		20,652	14,648	2,156	6,631
Peas & Carrots Mixed		1,166	844	1	504
Spinach		10,858	3,416	174	4,245
Squash, Summer/Zucchini		1,762	5,180		3,860
Southern Greens		1,486	425	1	2,619
Other Vegetables		31,316	32,722	5,167	18,963
Potatoes					
French Fries	32,744	16,805	68,968	122,200	23,443
Other Frozen	5,924	13,209	37,179	6,172	3,943
Meat					
Frozen Beef					
Boneless ⁴	997	52,553	39,540	108,363	29,394
Beef Cuts ⁵	118	2,304	7,097	6,410	3,495
Frozen Pork					
Ribs ⁶	151	762	9,524	17,212	5,131
Trimmings ⁷		214	8,527	15,768	940
Other ⁸	1,570	1,060	11,015	34,719	11,920
Other					
Veal		1,439	1,199	162	54
Lamb & Mutton		320	621	766	341

See footnote(s) at end of table.

--continued

**Stocks in Cold Storage: By Commodity, Region,
and United States, June 30, 2004 (continued)**

Commodity	East South Central	West South Central	Mountain	Pacific	US Total
	<i>1,000 Pounds</i>	<i>1,000 Pounds</i>	<i>1,000 Pounds</i>	<i>1,000 Pounds</i>	<i>1,000 Pounds</i>
Frozen Juice					
Orange Juice Concentrate	41	2,425	161	77,922	2,221,455
Other Juice Concentrate	157	15,022	848	112,521	291,105
Frozen Vegetables ³					
Asparagus		460	33	4,520	14,064
Limas, Fordhook		99	2	718	1,960
Limas, Baby		870	3,812	8,856	21,716
Green Beans, Reg. Cut		1,009	65	26,139	51,147
Green Beans, Fr. Style		172	185	2,377	6,596
Broccoli, Spears		18,920	971	14,535	50,314
Broccoli, Chopped & Cut		18,991	339	17,135	58,843
Brussels Sprouts		264		6,446	11,588
Carrots, Diced		1,283	15	23,166	49,485
Carrots, Other		8,820	103	44,150	75,288
Cauliflower		2,190	2	5,378	12,518
Corn, Cut		2,034	183	149,261	227,404
Corn, Cob		1,518	23	74,521	109,612
Mixed Vegetables		10,938	4	30,194	56,156
Okra		26,271		779	33,111
Onion Rings		838	667	570	8,426
Onions, Other		2,391	2,308	12,929	28,862
Blackeye Peas		1,066		574	3,004
Green Peas		3,736	12,088	146,502	206,413
Peas & Carrots Mixed		462	25	2,672	5,674
Spinach		8,950	18	55,626	83,287
Squash, Summer/Zucchini		5,304	1,321	13,899	31,326
Southern Greens		9,314		2,485	16,330
Other Vegetables		27,677	5,298	127,273	248,416
Potatoes					
French Fries	7,172	11,029	177,027	404,723	864,111
Other Frozen	1,198	21,560	57,874	116,282	263,341
Meat					
Frozen Beef					
Boneless ⁴	4,070	71,935	6,388	50,417	363,657
Beef Cuts ⁵	3,938	7,759	8,038	8,451	47,610
Frozen Pork					
Ribs ⁶	2,176	2,321	23	1,828	39,128
Trimming ⁷	197	2,796	10	317	28,769
Other ⁸	8,826	2,532	377	1,968	73,987
Other					
Veal		184	2	2,578	5,618
Lamb & Mutton		142	52	1,630	3,872

¹ East North Central combined with South Atlantic. Mountain and West North Central combined with West South Central.

² Middle Atlantic combined with South Atlantic.

³ New England combined with Middle Atlantic. East South Central combined with South Atlantic.

⁴ Includes all boxed boneless beef, such as ground beef, roasts, steaks, loins, strips, rounds, trimmings, etc. Variety meats (edible offal), such as tongues, livers, hearts, kidneys, and other organs removed from slaughtered beef, are included as miscellaneous freezer stocks.

⁵ Includes all boxed primal beef cuts, bone-in.

⁶ Includes spareribs and backribs.

⁷ Includes 42% regular trimmings, 72% special trimmings, boneless picnic meat, jowls, neckbone trimmings, blade, cheek, head, and shank meat, etc. Packaged bacon, sausage, and processed items, such as hot dogs and luncheon meats, are included in miscellaneous cooler or freezer stocks.

⁸ Includes ears, tails, feet, neckbones and snouts.

⁹ Includes tongues, kidneys, livers, stomachs, hearts, chitterlings, salivary glands, and other organs removed from slaughtered hogs.

¹⁰ Includes product unable to be classified elsewhere in this report.

**Stocks in Cold Storage: By Commodity, Region,
and United States, July 31, 2004**

Commodity	New England	Middle Atlantic	East North Central	West North Central	South Atlantic
	<i>1,000 Pounds</i>	<i>1,000 Pounds</i>	<i>1,000 Pounds</i>	<i>1,000 Pounds</i>	<i>1,000 Pounds</i>
Total Fresh Apples	45	40,068		42	
Nuts					
Shelled					
Peanuts		484	28	24	264,428
Pecans ¹		128			11,152
In-Shell					
Pecans ¹					11,284
Dairy Products					
Natural Cheese					
American, Total	26,935	67,134	240,486	138,798	7,178
Other Natural Cheese	442	19,614	124,876	56,665	127
Frozen Poultry					
Chicken					
Broilers, Fryers					
Roasters (Whole)		1,619	330	692	4,221
Hens, Mature Chickens	26	212	131	265	418
Other	986	16,909	16,064	47,312	234,395
Total Chicken	1,012	18,740	16,525	48,269	239,034
Turkeys					
Whole Turkeys	4,820	22,709	6,542	50,778	88,989
Other Turkey	1,227	12,897	18,352	59,587	125,082
Total Turkey	6,047	35,606	24,894	110,365	214,071
Ducks		247	382	2	84
Total Poultry	7,059	54,593	41,801	158,636	453,189
Frozen Fruit					
Apples	16	11,974	16,669	60	413
Blueberries	6,419	7,943	24,931	842	7,298
Cherries, Tart (RTP)	2	4,742	61,428	66	1,593
Cherries, Sweet	1	175	3,762	646	3
Peaches	20	1,344	3,842	2,230	277
Raspberries, Red	5	1,550	1,503	201	290
Strawberries, Total	36	7,801	6,981	1,979	4,963
Other Frozen Fruit	99	10,576	89,127	2,329	1,800

See footnote(s) at end of table.

--continued

**Stocks in Cold Storage: By Commodity, Region,
and United States, July 31, 2004 (continued)**

Commodity	East South Central	West South Central	Mountain	Pacific	US Total
	<i>1,000 Pounds</i>	<i>1,000 Pounds</i>	<i>1,000 Pounds</i>	<i>1,000 Pounds</i>	<i>1,000 Pounds</i>
Total Fresh Apples		41	21	234,073	274,290
Nuts					
Shelled					
Peanuts	30,073	102,770	83	219	398,109
Pecans ¹	1,197	25,286		107	37,870
In-Shell					
Pecans ¹	2,079	65,295			78,658
Dairy Products					
Natural Cheese					
American, Total	94	5,933	33,213	101,759	621,530
Other Natural Cheese	2,487	117	5,733	14,565	224,626
Frozen Poultry					
Chicken					
Broilers, Fryers					
Roasters (Whole)	4,226	8,535	245	1,843	21,711
Hens, Mature Chickens	283	1,056		885	3,276
Other	136,557	207,624	3,081	28,337	691,265
Total Chicken	141,066	217,215	3,326	31,065	716,252
Turkeys					
Whole Turkeys	3,772	99,059	10,473	28,783	315,925
Other Turkey	3,379	34,523	12,560	19,674	287,281
Total Turkey	7,151	133,582	23,033	48,457	603,206
Ducks	17	106	78	56	972
Total Poultry	148,234	350,903	26,437	79,578	1,320,430
Frozen Fruit					
Apples	13	550	56	8,850	38,601
Blueberries	152	735	147	28,864	77,331
Cherries, Tart (RTP)		137	1,810	10,265	80,043
Cherries, Sweet	1	70	954	3,961	9,573
Peaches	18	339	38	30,272	38,380
Raspberries, Red	175	136	24	85,643	89,527
Strawberries, Total	1,366	35,340	149	424,851	483,466
Other Frozen Fruit	96	12,692	1,857	62,687	181,263

See footnote(s) at end of table.

--continued

**Stocks in Cold Storage: By Commodity, Region,
and United States, July 31, 2004 (continued)**

Commodity	New England	Middle Atlantic	East North Central	West North Central	South Atlantic
	<i>1,000 Pounds</i>	<i>1,000 Pounds</i>	<i>1,000 Pounds</i>	<i>1,000 Pounds</i>	<i>1,000 Pounds</i>
Frozen Juice					
Orange Juice Conc. ²	55		1,059	557	2,028,149
Other Juice Concentrate	4,097	18,970	15,754	884	90,454
Frozen Vegetables ³					
Asparagus		758	9,731	30	225
Limas, Fordhook		485	216		126
Limas, Baby		3,695	1,024	1	2,550
Green Beans, Reg. Cut		10,909	22,336	885	10,549
Green Beans, Fr. Style		2,902	3,625	101	1,253
Broccoli, Spears		6,163	6,092	1	3,839
Broccoli, Chopped & Cut		5,433	6,271	2,727	6,530
Brussels Sprouts		1,196	945		2,537
Carrots, Diced		4,543	9,142	418	2,790
Carrots, Other		7,339	7,204	496	4,320
Cauliflower		2,148	1,327	120	886
Corn, Cut		19,094	29,257	11,027	11,196
Corn, Cob		8,153	9,542	4,694	6,636
Mixed Vegetables		5,259	8,611	59	2,563
Okra		1,427	384		4,557
Onion Rings		297	2,989	926	1,695
Onions, Other		4,836	4,398	388	1,874
Blackeye Peas		312	32		894
Green Peas		36,035	32,149	13,706	11,726
Peas & Carrots Mixed		1,362	1,190		509
Spinach		9,926	3,447	138	3,742
Squash, Summer/Zucchini		1,726	5,498		3,957
Southern Greens		1,578	520	1	2,428
Other Vegetables		34,767	33,536	4,649	20,274
Potatoes					
French Fries	35,694	20,228	60,728	120,914	26,373
Other Frozen	7,407	12,307	33,581	7,290	4,437
Meat					
Frozen Beef					
Boneless ⁴	1,031	55,782	41,448	106,402	31,412
Beef Cuts ⁵	174	2,083	7,531	6,412	3,329
Frozen Pork					
Ribs ⁶	146	982	9,034	16,713	4,490
Trimmings ⁷	19	214	5,875	13,598	771
Other ⁸	1,384	581	11,187	35,888	11,890
Other					
Veal		1,500	1,006	160	47
Lamb & Mutton		458	723	763	281

See footnote(s) at end of table.

--continued

**Stocks in Cold Storage: By Commodity, Region,
and United States, July 31, 2004 (continued)**

Commodity	East South Central	West South Central	Mountain	Pacific	US Total
	<i>1,000 Pounds</i>	<i>1,000 Pounds</i>	<i>1,000 Pounds</i>	<i>1,000 Pounds</i>	<i>1,000 Pounds</i>
Frozen Juice					
Orange Juice Concentrate	39	2,613	189	72,915	2,105,576
Other Juice Concentrate	140	14,479	776	102,086	247,640
Frozen Vegetables ³					
Asparagus		336	74	4,156	15,310
Limas, Fordhook		130	1	495	1,453
Limas, Baby		738	3,737	6,635	18,380
Green Beans, Reg. Cut		708	309	64,915	110,611
Green Beans, Fr. Style		106	50	8,904	16,941
Broccoli, Spears		18,889	1,000	14,415	50,399
Broccoli, Chopped & Cut		17,544	406	19,936	58,847
Brussels Sprouts		209		5,176	10,063
Carrots, Diced		1,371	18	19,496	37,778
Carrots, Other		7,067	155	45,275	71,856
Cauliflower		2,066	8	5,886	12,441
Corn, Cut		1,901	122	159,640	232,237
Corn, Cob		1,053	17	79,132	109,227
Mixed Vegetables		10,616	4	26,883	53,995
Okra		26,686		702	33,756
Onion Rings		658	668	637	7,870
Onions, Other		2,077	2,129	11,200	26,902
Blackeye Peas		968		486	2,692
Green Peas		3,376	12,760	232,237	341,989
Peas & Carrots Mixed		472	26	2,848	6,407
Spinach		7,706	23	50,157	75,139
Squash, Summer/Zucchini		6,439	1,286	17,382	36,288
Southern Greens		9,171		4,196	17,894
Other Vegetables		29,111	4,971	160,305	287,613
Potatoes					
French Fries	7,840	11,063	184,790	391,472	859,102
Other Frozen	1,294	21,356	54,613	115,622	257,907
Meat					
Frozen Beef					
Boneless ⁴	3,920	74,551	6,245	56,147	376,938
Beef Cuts ⁵	3,744	7,385	8,047	7,175	45,880
Frozen Pork					
Ribs ⁶	2,500	2,420	26	1,708	38,019
Trimming ⁷	207	2,452	7	248	23,391
Other ⁸	8,022	2,405	260	2,243	73,860
Other					
Veal		223	2	2,647	5,585
Lamb & Mutton		144	33	1,694	4,096

¹ East North Central combined with South Atlantic. Mountain and West North Central Combined with West South Central.

² Middle Atlantic combined with South Atlantic.

³ New England combined with Middle Atlantic. East South Central combined with South Atlantic.

⁴ Includes all boxed boneless beef, such as ground beef, roasts, steaks, loins, strips, rounds, trimmings, etc. Variety meats (edible offal), such as tongues, livers, hearts, kidneys, and other organs removed from slaughtered beef, are included as miscellaneous freezer stocks.

⁵ Includes all boxed primal beef cuts, bone-in.

⁶ Includes spareribs and backribs.

⁷ Includes 42% regular trimmings, 72% special trimmings, boneless picnic meat, jowls, neckbone trimmings, blade, cheek, head, and shank meat, etc. Packaged bacon, sausage, and processed items, such as hot dogs and luncheon meats, are included in miscellaneous cooler or freezer stocks.

⁸ Includes ears, tails, feet, neckbones and snouts.

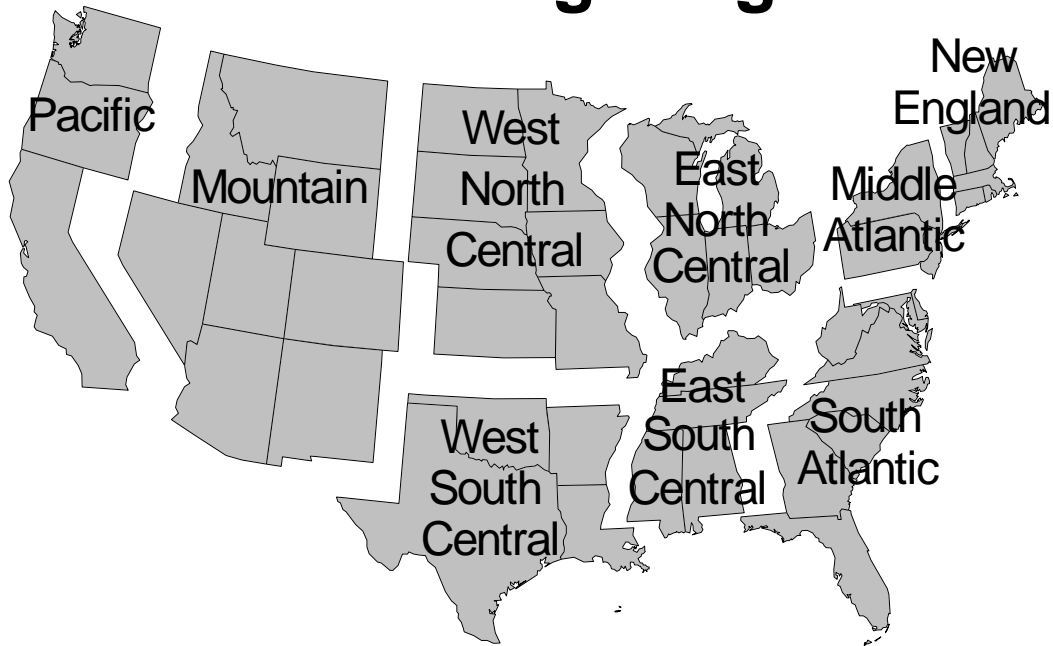
⁹ Includes tongues, kidneys, livers, stomachs, hearts, chitterlings, salivary glands, and other organs removed from slaughtered hogs.

¹⁰ Includes product unable to be classified elsewhere in this report.

**Public General Warehouses: Cold Storage Space Occupied
by Region and United States, July 2004**

Region	Cooler				Freezer			
	Usable Space	Usable Space Occupied			Usable Space	Usable Space Occupied		
		Jul 31 2004	Jul 31 2003	Jun 30 2004		Jul 31 2004	Jul 31 2003	Jun 30 2004
	<i>1,000 Cu Ft</i>	<i>Percent</i>	<i>Percent</i>	<i>Percent</i>	<i>1,000 Cu Ft</i>	<i>Percent</i>	<i>Percent</i>	<i>Percent</i>
New England	1,741	70	77	80	15,747	70	74	77
Middle Atlantic	46,617	51	55	58	136,133	52	55	58
E. North Central	58,601	52	56	55	219,328	45	54	55
W. North Central	46,619	45	48	52	159,802	53	59	63
South Atlantic	51,522	28	40	50	198,954	50	59	62
E. South Central	9,789	49	52	54	71,316	39	50	50
W. South Central	29,209	25	30	29	139,625	48	55	55
Mountain	12,202	40	49	52	61,492	57	64	66
Pacific	55,645	35	39	41	317,941	60	63	67
US	311,945	41	46	49	1,320,338	52	58	61

Cold Storage Regions



Survey Procedures: Questionnaires are mailed about the 24th of each month to all operators on the list of approximately 1,400 public and private cold storage warehouses. In addition, apple data are obtained from special surveys and other sources (State Departments of Agriculture, U.S. Apple Association, etc.). All survey data represent stocks as of the end of the month.

Data are collected from warehouses artificially cooled to a temperature of 50 degrees Fahrenheit or lower, and whose food products are normally stored for 30 days or more. All food items in these facilities are reported regardless of the number of days stored at the time of the report. Also included are specialized storage facilities meeting the 30 day requirement, such as fruit houses, dairy manufacturing plants, frozen fruit, fruit juice, and vegetable processors, and poultry and meat packing plants. Excluded are stocks in space maintained by wholesalers, jobbers, distributors, chain stores, locker plants containing individual lockers, meat packer branch houses, and frozen food processors whose entire inventories are turned over more than once a month.

Estimating Procedures: Data for reporting firms are added to estimates for non-reporting firms to obtain regional and National totals. Estimates for non-reporting firms are obtained by multiplying the previous month's figure by a percent change from the previous month. The percent change is calculated for each item from totals of the current and previous month summed from firms that reported both months.

Revision Policy: Data are revised the following month based on late reports or corrected data. Final figures are published in the annual summary in February of the following year.

Reliability: Reports are received from 900 firms each month which represent about 70 percent of the total capacity. Firms that are not on the list or firms who have never reported are not represented in the data. Monthly data can vary due to different firms reporting month to month. Survey data are also subject to non-sampling errors such as omissions and mistakes in reporting and in processing the data. While these errors cannot be measured directly, they are minimized by carefully reviewing all reported data for consistency and reasonableness.

ACCESS TO REPORTS!!

For your convenience, there are several ways to obtain NASS reports, data products, and services:

INTERNET ACCESS

All NASS reports are available free of charge on the worldwide Internet. For access, connect to the Internet and go to the NASS Home Page at: www.usda.gov/nass/. Select "Today's Reports" or Publications and then Reports Calendar or Publications and then Search, by Title or Subject.

E-MAIL SUBSCRIPTION

All NASS reports are available by subscription free of charge direct to your e-mail address. Starting with the NASS Home Page at www.usda.gov/nass/, click on **Publications**, then click on the **Subscribe by E-mail** button which takes you to the page describing e-mail delivery of reports. Finally, click on **Go to the Subscription Page** and follow the instructions.

PRINTED REPORTS OR DATA PRODUCTS

CALL OUR TOLL-FREE ORDER DESK: 800-999-6779 (U.S. and Canada)
Other areas, please call 703-605-6220 FAX: 703-605-6900
(Visa, MasterCard, check, or money order acceptable for payment.)

ASSISTANCE

For **assistance** with general agricultural statistics or further information about NASS or its products or services, contact the **Agricultural Statistics Hotline** at **800-727-9540**, 7:30 a.m. to 4:00 p.m. ET, or e-mail: nass@nass.usda.gov.

The United States Department of Agriculture (USDA) prohibits discrimination in all its programs on the basis of race, color, national origin, gender, religion, age, disability, political beliefs, sexual orientation, and marital or family status. (Not all prohibited bases apply to all programs.) Persons with disabilities who require alternative means for communication of program information (braille, large print, audiotape, etc.) should contact the USDA's TARGET Center at 202-720-2600 (voice and TDD).

To file a complaint of discrimination, write USDA, Director, Office of Civil Rights, Room 326-W, Whitten Building, 1400 Independence Avenue, SW, Washington, D.C., 20250-9410, or call 202-720-5964 (voice or TDD). USDA is an equal opportunity provider and employer.